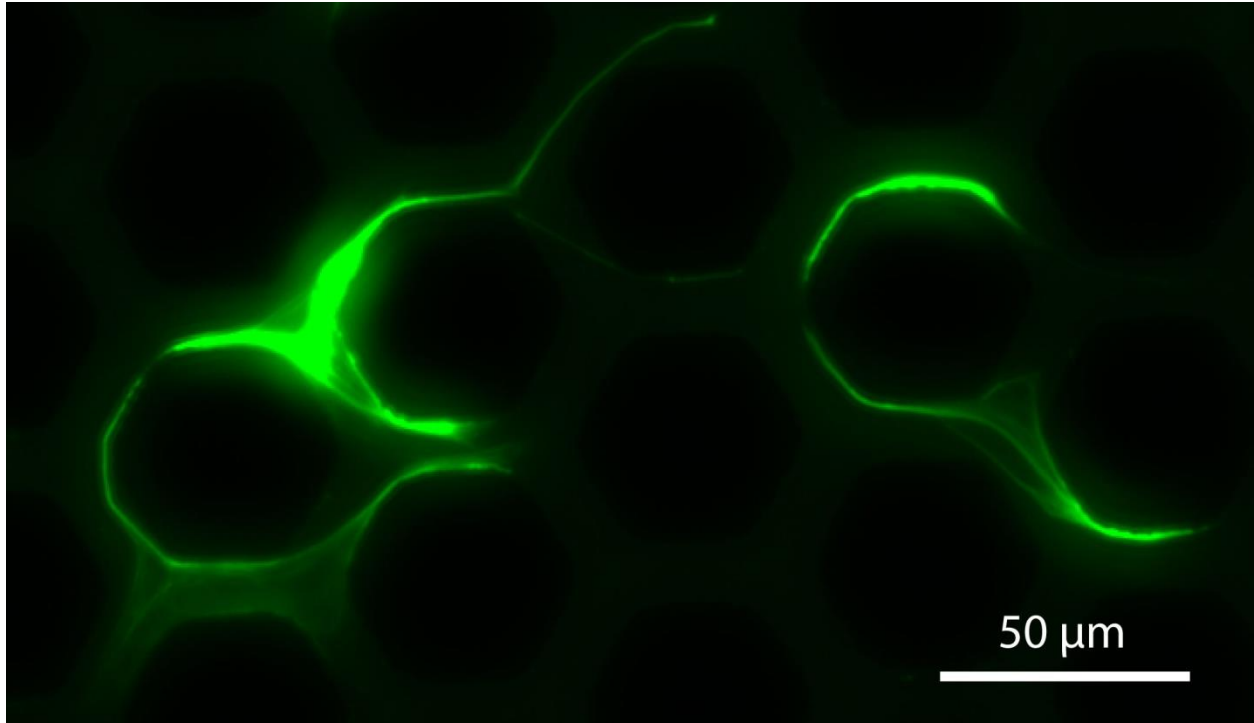


Supplementary Figure 1. Neutrophils in whole blood do not impede blood flow. A) In control experiments 10 μ L blood with 20.000-80.000 neutrophils was transfused through the network and RBC flow patterns were subsequently analyzed. The neutrophils inside the blood did not cause any obstructions of blood flow. (B, C). On occasion, NETs are trapped in the device. These NETs have no effect on the blood flow through the device.



Supplementary Figure 2. Individual NETs can reach more than 100 μm. High magnification images of two individual NETs that have spun their chromatin fibres around posts. Chromatin fibres can reach lengths of more than 25 times the original cell size.