

Single-step chromatographic isolation of lithium from whole-rock carbonate and clay for isotopic analysis with multi-collector ICP-mass spectrometry

K. Van Hoecke, J. Belza, T. Croymans, S. Misra, P. Claeys, F. Vanhaecke

Supporting Information

Na and Ca contamination in 6 M HCl eluent solution during resin cleaning

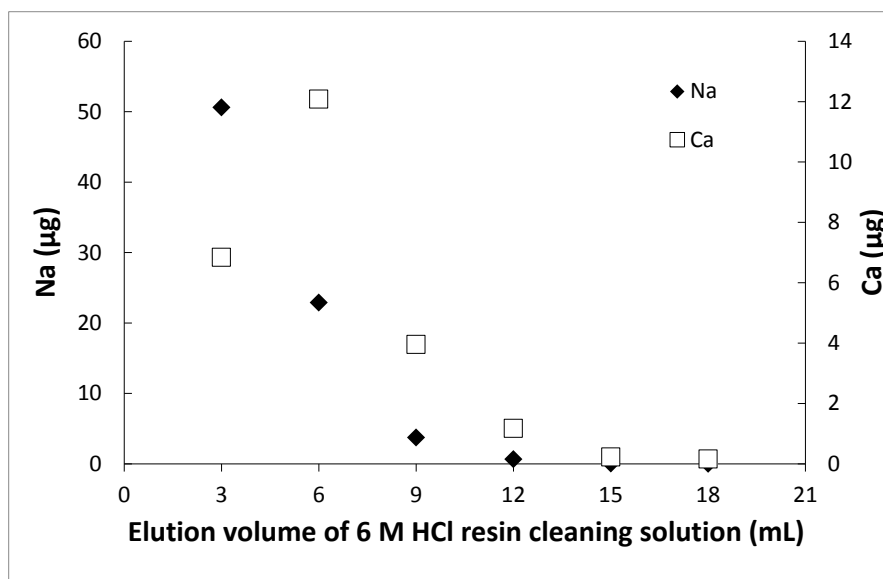


Figure S1 - Na and Ca concentration as a function of 6M HCl resin cleaning eluent volume in 3 mL columns.

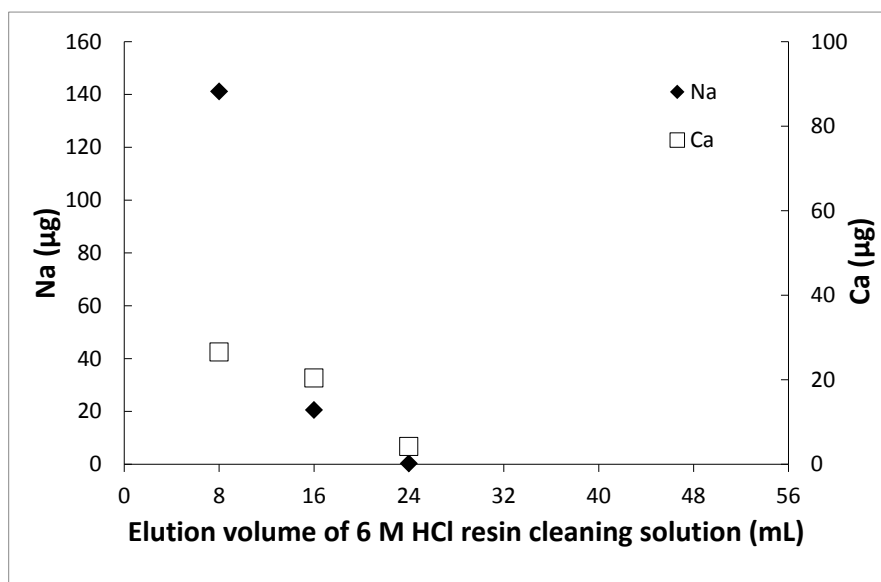


Figure S2 - Na and Ca concentration as a function of 6M HCl resin cleaning eluent volume in 8 mL columns.