

**Supplementary Information for: Glow Discharge Optical Emission
Spectroscopy Elemental Mapping with Restrictive Anode Array Masks.**

*Marcel Kroschk, John Usala, Trevor Adesso, Gerardo Gamez**

*Texas Tech University, Department of Chemistry and Biochemistry, Box 41061, Lubbock, TX
7940-1061, USA. Gerardo.Gamez@ttu.edu*

**Corresponding Author*

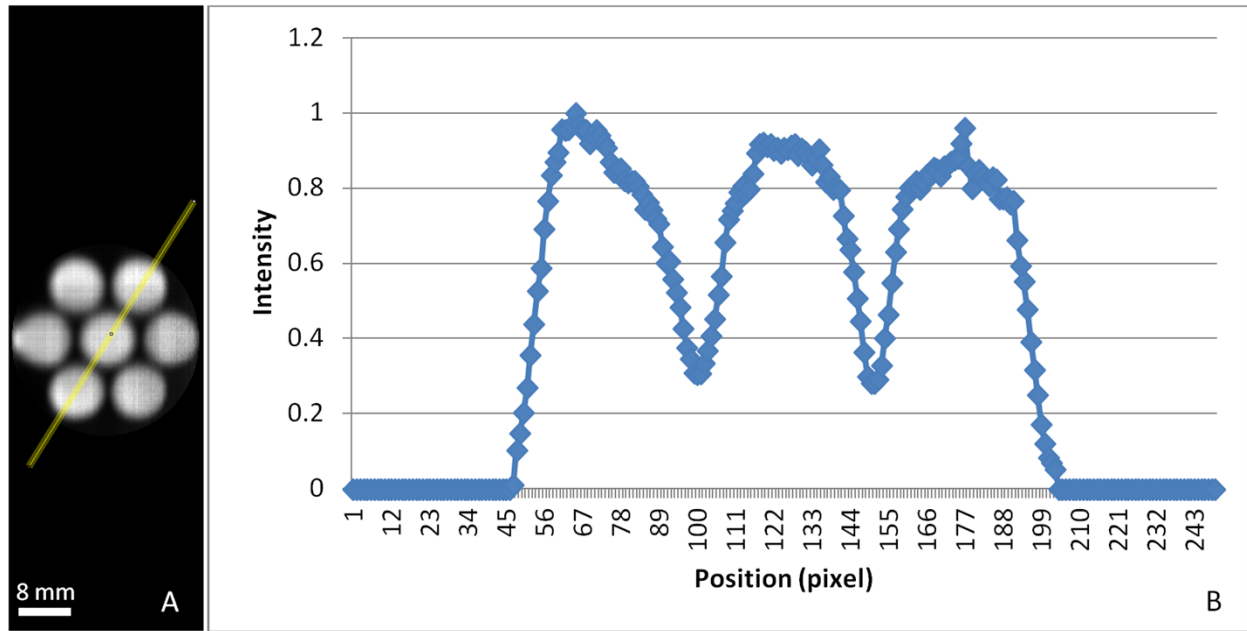


Figure S11: A) GDOES emission at 324.7 nm of a brass sample analyzed with a 7 aperture RAAM at 1330 Pa, 2 watt/mm², 8 mm i.d., 3 mm thickness. B) Normalized intensity profile along the line in figure S1A.

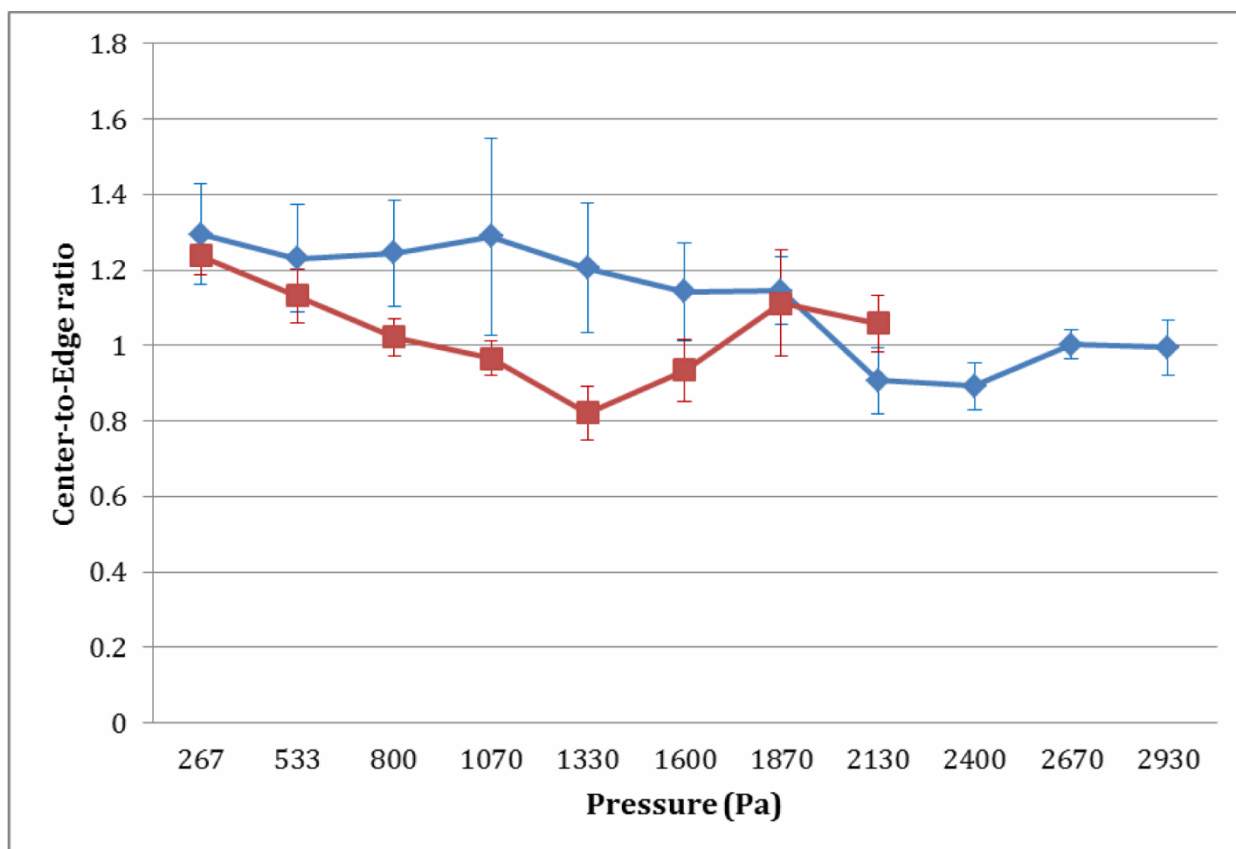


Figure S12: Plot of center-to-edge intensity ratio as a function of pressure of RAAMs with 8 mm i.d. apertures, 2 watts/mm², with 3 mm thickness (red squares) or 12 mm thickness (blue diamonds).

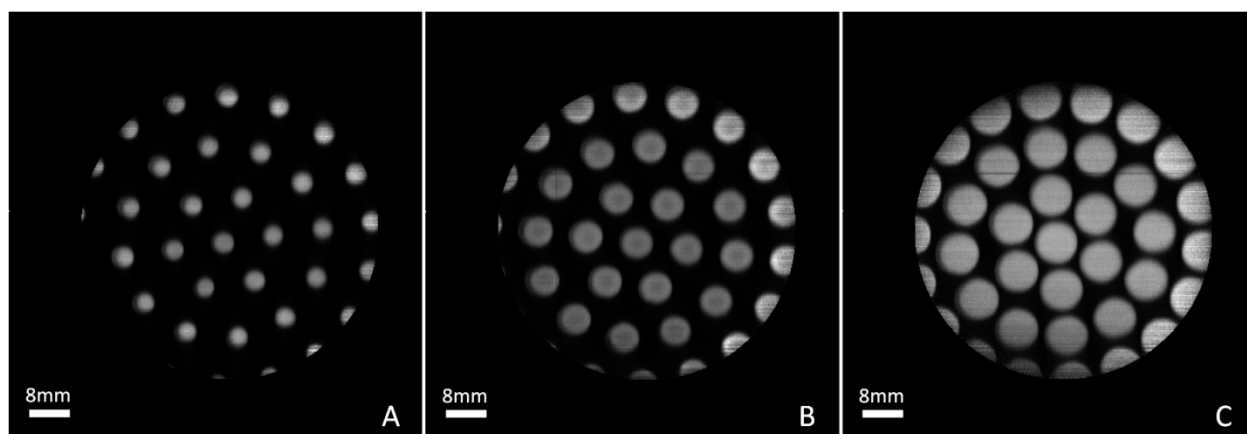


Figure SI3: GDOES emission at 324.7 nm of a brass sample analyzed with a 37 aperture RAAM at 1330 Pa, 2 watts/mm², and 12 mm thick, and either A) 4 mm i.d., B) 6 mm i.d., or C) 8 mm ID apertures.