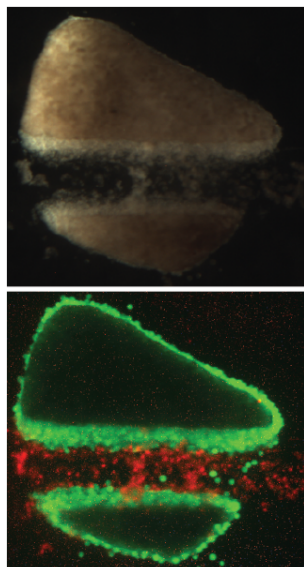


Supporting Information

Supplementary Figure S1. Explant viability test. Live/Dead Cell viability assays were used to examine the viability of the cells after the detergent treatment. Most cells were alive after the detergent treatment. Green: live cell. Red: dead cell.



Supplementary Figure S2. Channel kymograph showing the speed of the detergent removal. The intensity profile in the channel was plotted to show how quickly the detergent stream was removed. In 5 seconds, the detergent stream was completely removed. The intensity profile at the channel location of 760 μm was plotted versus time to analyze the intensity changes when the detergent stream was turned on and off. Since the detergent was mixed with the dye, the detergent stream intensity profile showed the stream location in the channel.

