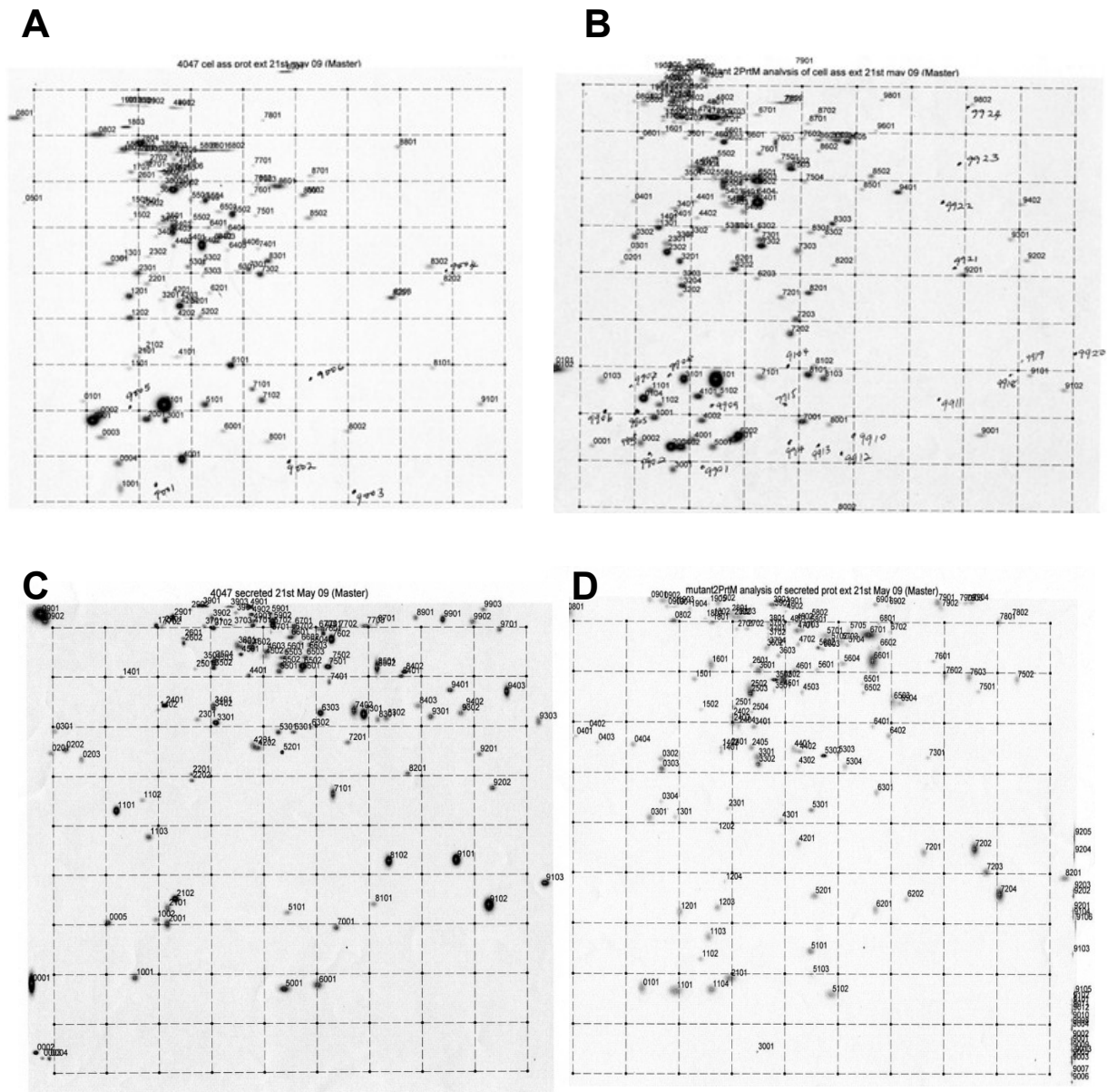
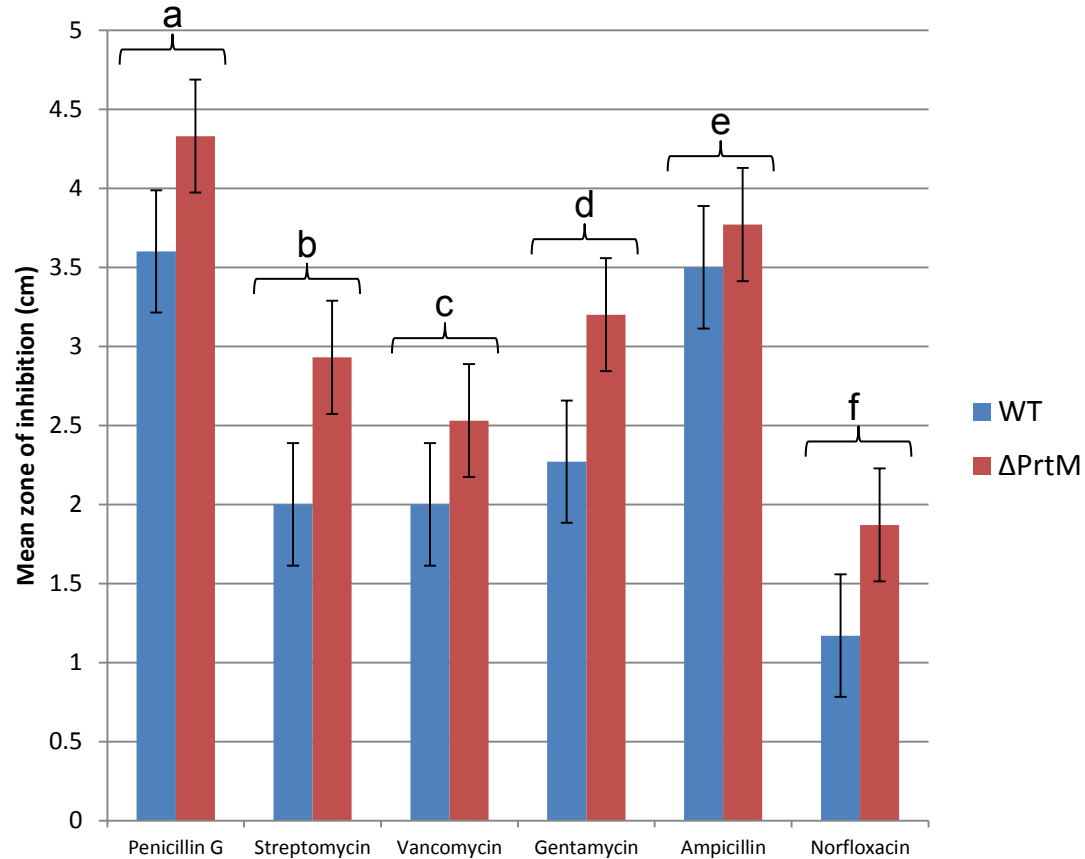


Supplementary Figure 4 2DE master gel images from n=6 replicates. A, *S. equi* wild type cell-associated proteins. B, $\Delta prM_{138-213}$ cell-associated proteins. C, *S. equi* wild type secreted proteins. D, $\Delta prM_{138-213}$ secreted proteins.



Supplementary Figure 5. Antibiotic sensitivity profiles of *S. equi* wild type and $\Delta prtM_{138-213}$.



Mean zone of inhibition size for three biological replicates. For all the antibiotics tested, areas of growth inhibition were significantly smaller (according to Student's T-test) for the WT compared to the mutant, meaning the $\Delta prtM_{138-213}$ strain is significantly more susceptible to each antibiotic tested. T-test p-values were as follows: a, 0.004; b, 0.038; c, 0.024; d, 0.010; e, 0.008; f, 0.003.