

Supporting Information for

Synthesis of *N*-cyano-substituted sulfilimine and sulfoximine derivatives of S0859 and their biological evaluation as sodium bicarbonate co-transport inhibitors

Anne-Dorothee Steinkamp,^[a] Nico Seling,^[a] Soojung Lee,^[b] Ebbe Boedtkjer^[b]
and Carsten Bolm*^[a]

^[a] Institute of Organic Chemistry, RWTH Aachen University, Landoltweg 1, D-52074 Aachen, Germany. E-mail: carsten.bolm@oc.rwth-aachen.de

^[b] Department of Biomedicine, Aarhus University, Ole Worms Allé 3, Building 1170, DK-8000 Aarhus C (Denmark). E-mail: eb@biomed.au.dk

Table of Contents

- Results from the NCI-60 DTP Human Tumor Cell Line Screen performed within the Developmental Therapeutics Program of the Division of Cancer Treatment and Diagnosis [US National Cancer Institute (NCI)/National Institutes of Health (NIH); <http://dtp.cancer.gov>]
 - a) Compound **2** S2
 - b) Compound **3** S3
- Copies of NMR spectra S4
- Copies of mass spectra S10

Developmental Therapeutics Program

NSC: D-781554 / 1

Conc: 1.00E-5 Molar

Test Date: Aug 04, 2014

One Dose Mean Graph

S2

Experiment ID: 1408OS30

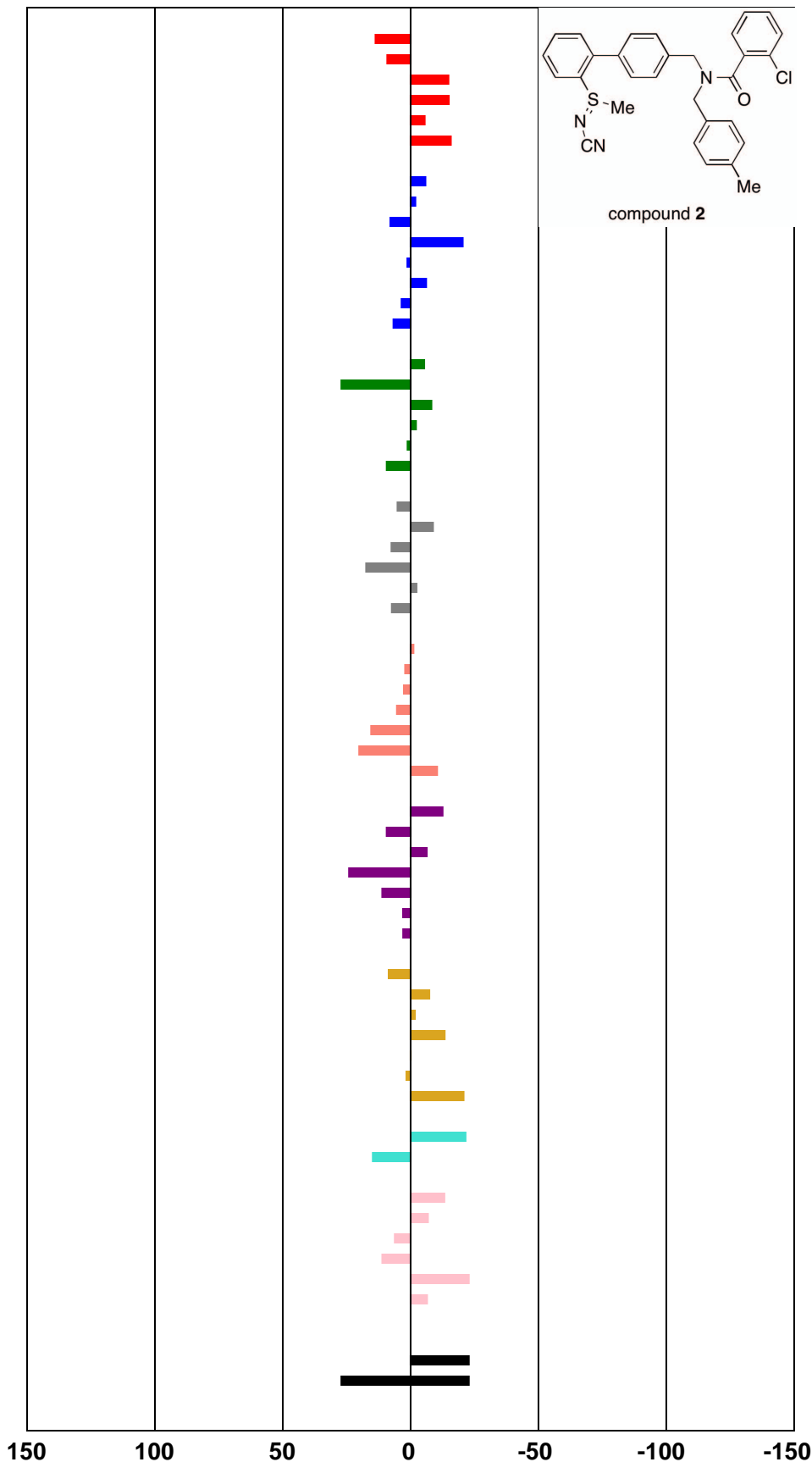
Report Date: Aug 20, 2014

Panel/Cell Line

Growth Percent

Mean Growth Percent - Growth Percent

Leukemia		
CCRF-CEM	94.86	
HL-60(TB)	90.26	
K-562	66.31	
MOLT-4	66.18	
RPMI-8226	75.60	
SR	65.38	
Non-Small Cell Lung Cancer		
A549/ATCC	75.31	
EKVX	79.25	
HOP-62	89.04	
HOP-92	60.73	
NCI-H226	82.40	
NCI-H23	75.03	
NCI-H322M	84.67	
NCI-H460	87.84	
Colon Cancer		
COLO 205	75.79	
HCC-2998	108.20	
HCT-116	72.97	
HCT-15	79.01	
KM12	82.33	
SW-620	90.48	
CNS Cancer		
SF-268	86.26	
SF-295	72.36	
SF-539	88.62	
SNB-19	98.52	
SNB-75	78.81	
U251	88.48	
Melanoma		
LOX IMVI	79.99	
MALME-3M	83.27	
M14	83.77	
MDA-MB-435	86.49	
SK-MEL-28	96.56	
UACC-257	101.24	
UACC-62	70.74	
Ovarian Cancer		
IGROV1	68.60	
OVCAR-3	90.50	
OVCAR-4	74.80	
OVCAR-5	105.21	
OVCAR-8	92.22	
NCI/ADR-RES	84.09	
SK-OV-3	84.04	
Renal Cancer		
786-0	89.71	
A498	73.79	
ACHN	79.44	
CAKI-1	67.79	
RXF 393	81.07	
SN12C	82.78	
UO-31	60.39	
Prostate Cancer		
PC-3	59.63	
DU-145	95.91	
Breast Cancer		
MCF7	67.91	
MDA-MB-231/ATCC	74.33	
HS 578T	87.31	
BT-549	92.20	
T-47D	58.35	
MDA-MB-468	74.68	
Mean	81.12	
Delta	22.77	
Range	49.85	



Developmental Therapeutics Program

NSC: D-781555 / 2

Conc: 1.00E-5 Molar

Test Date: Aug 25, 2014

One Dose Mean Graph

S3

Experiment ID: 1408OS42

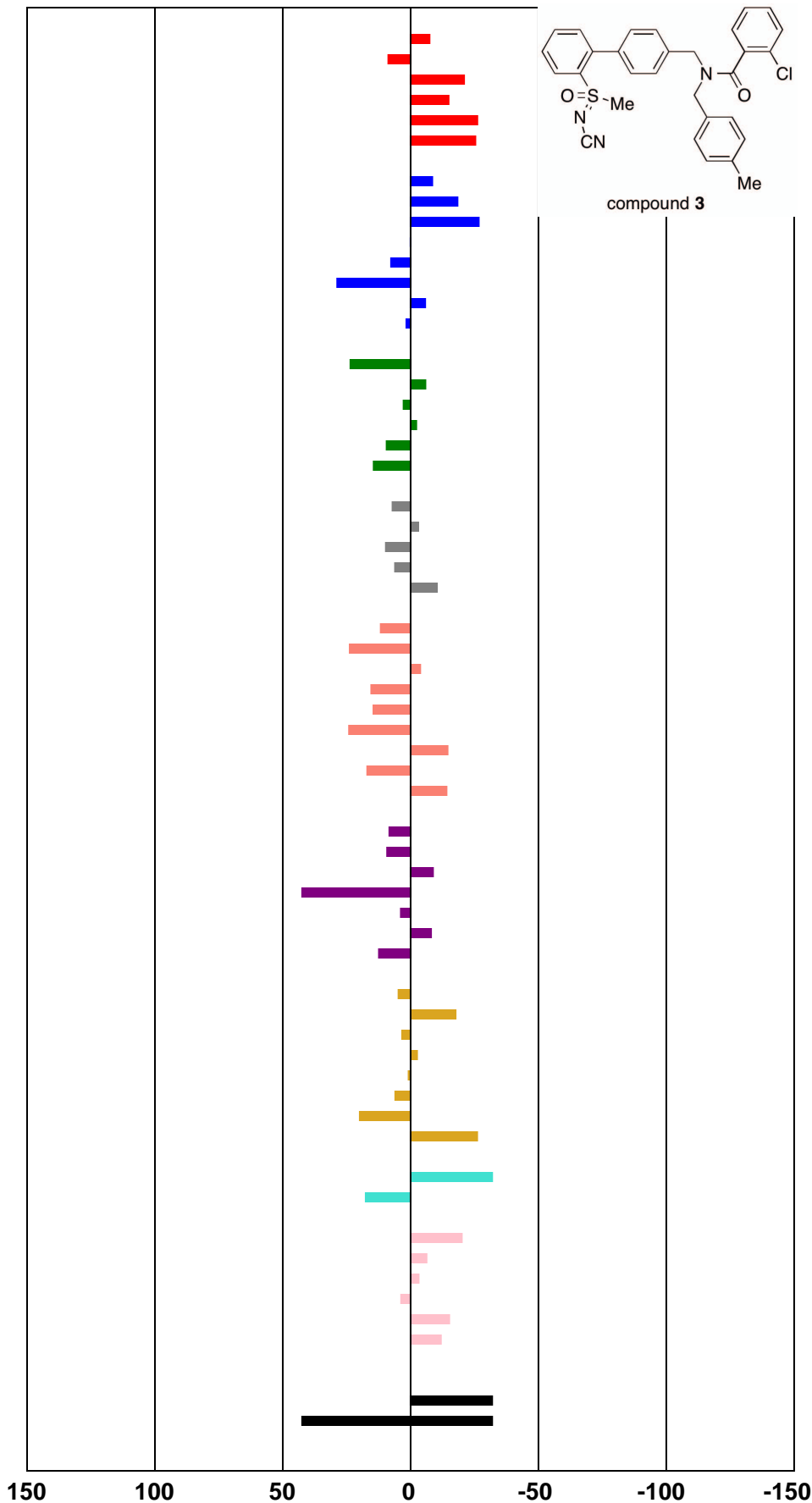
Report Date: Sep 11, 2014

Panel/Cell Line

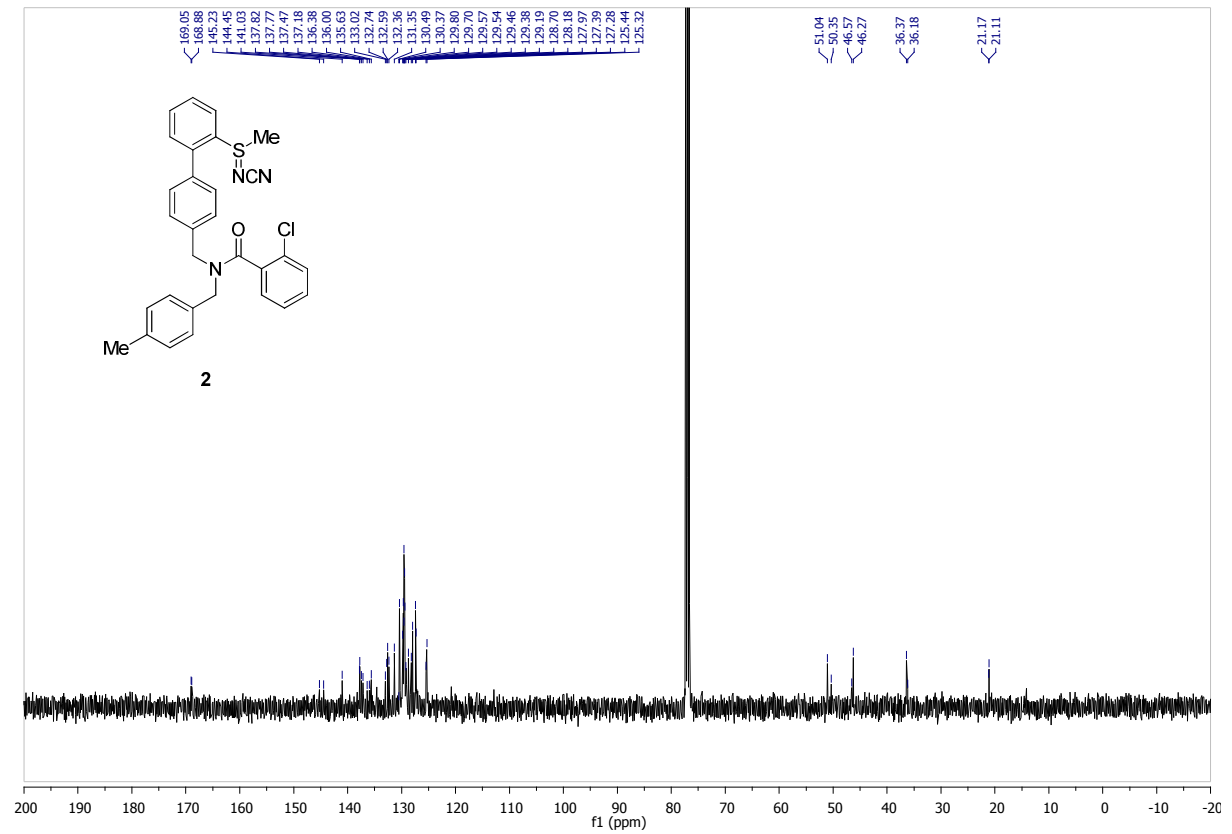
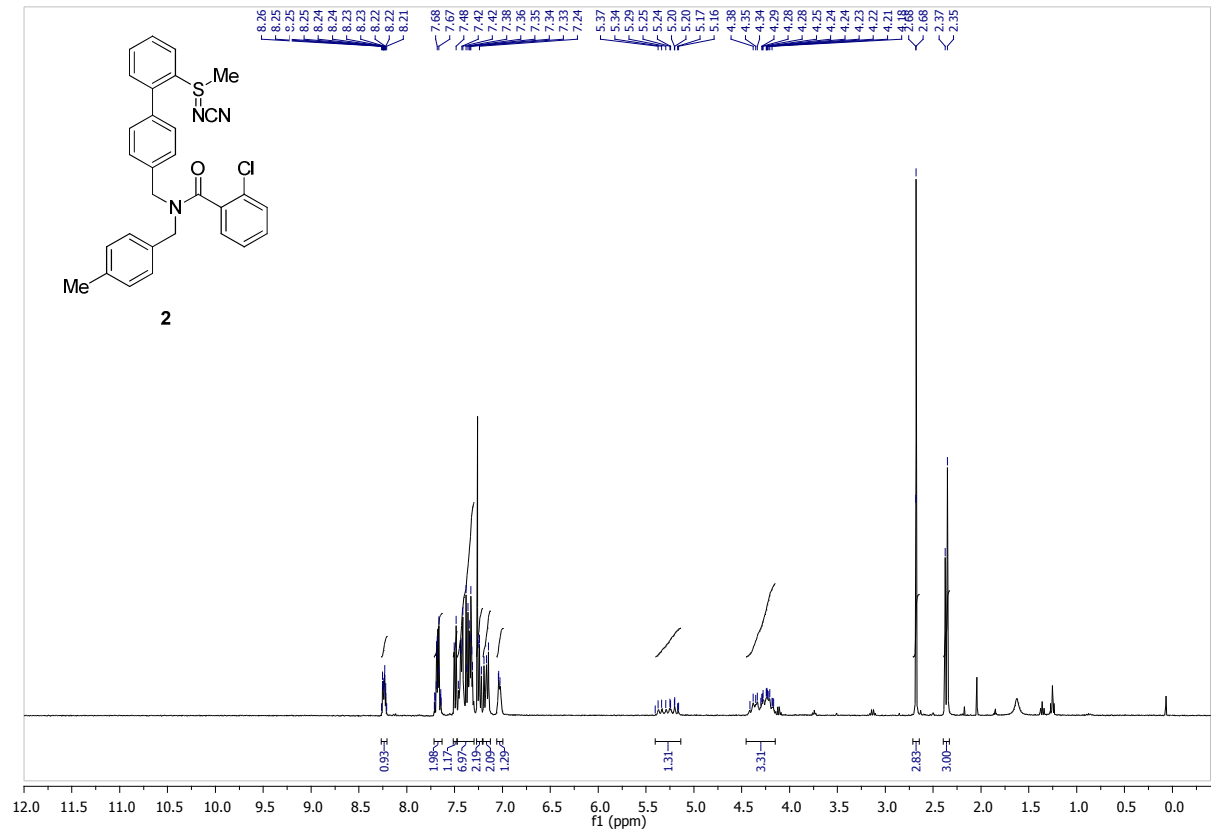
Growth Percent

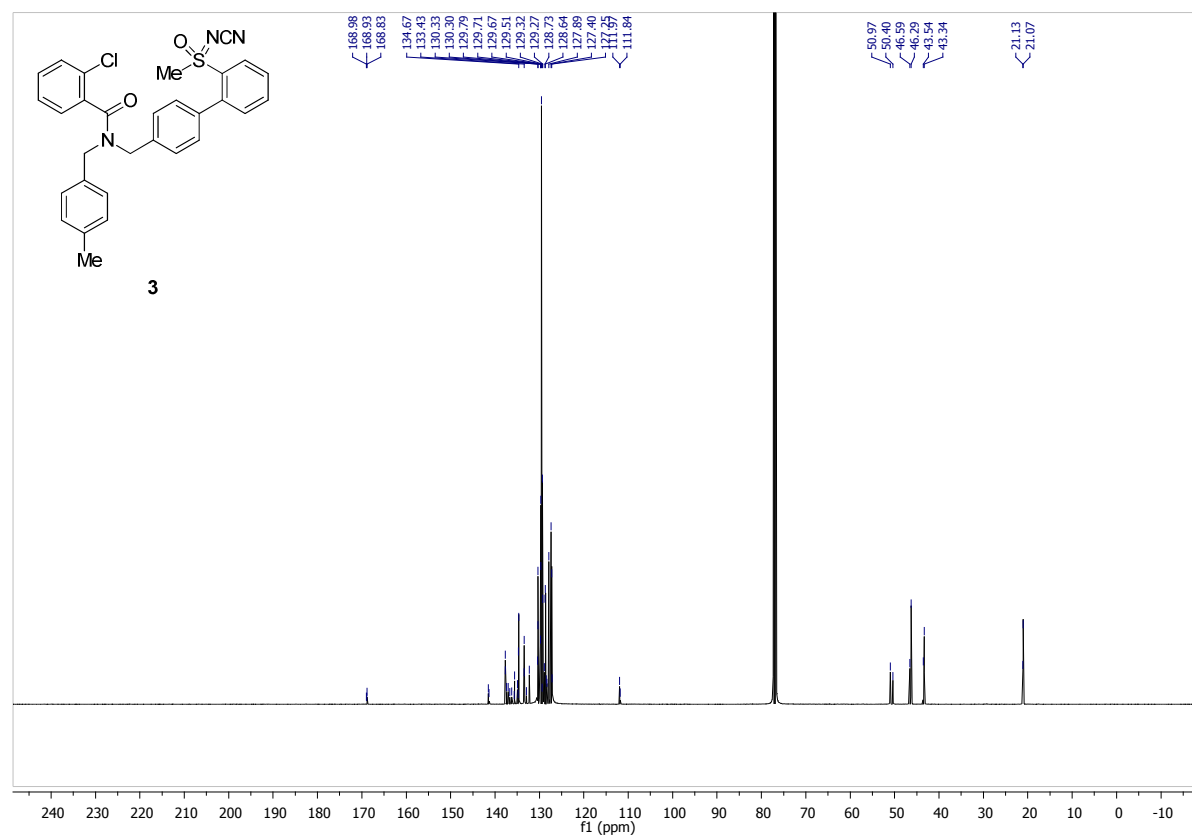
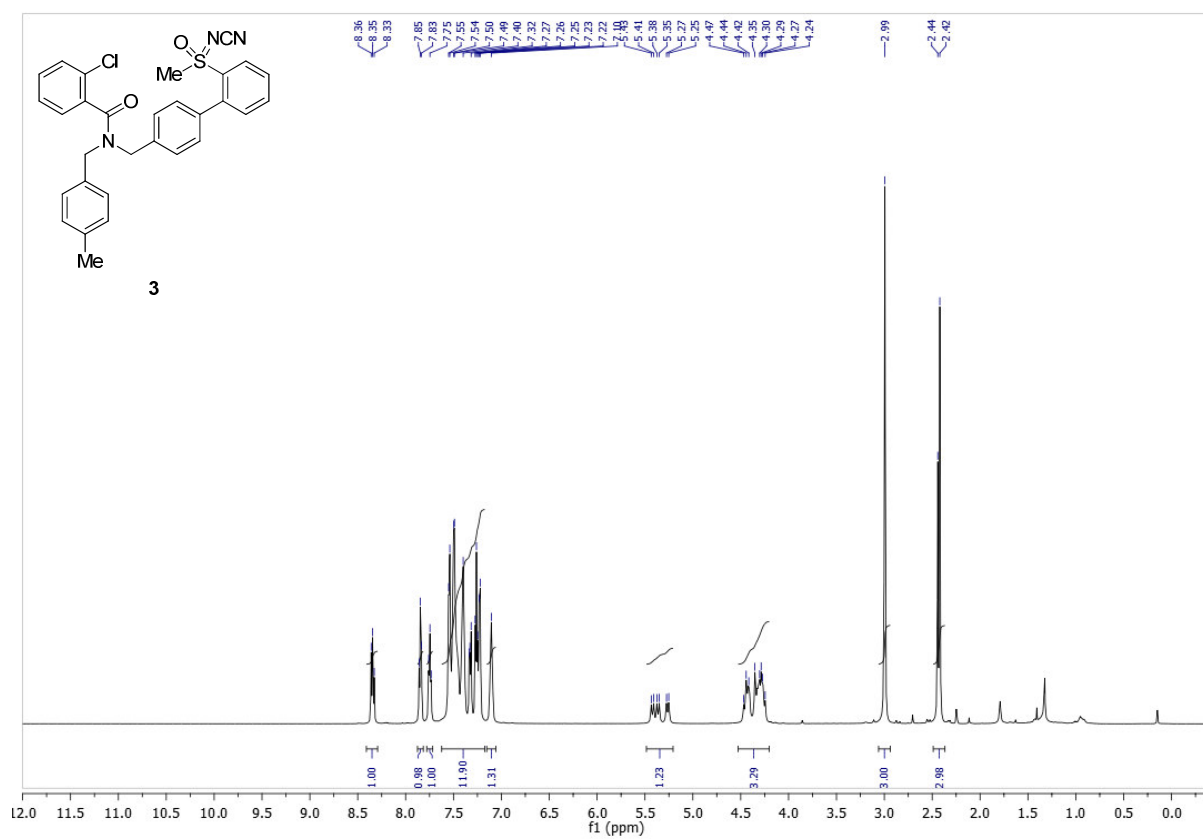
Mean Growth Percent - Growth Percent

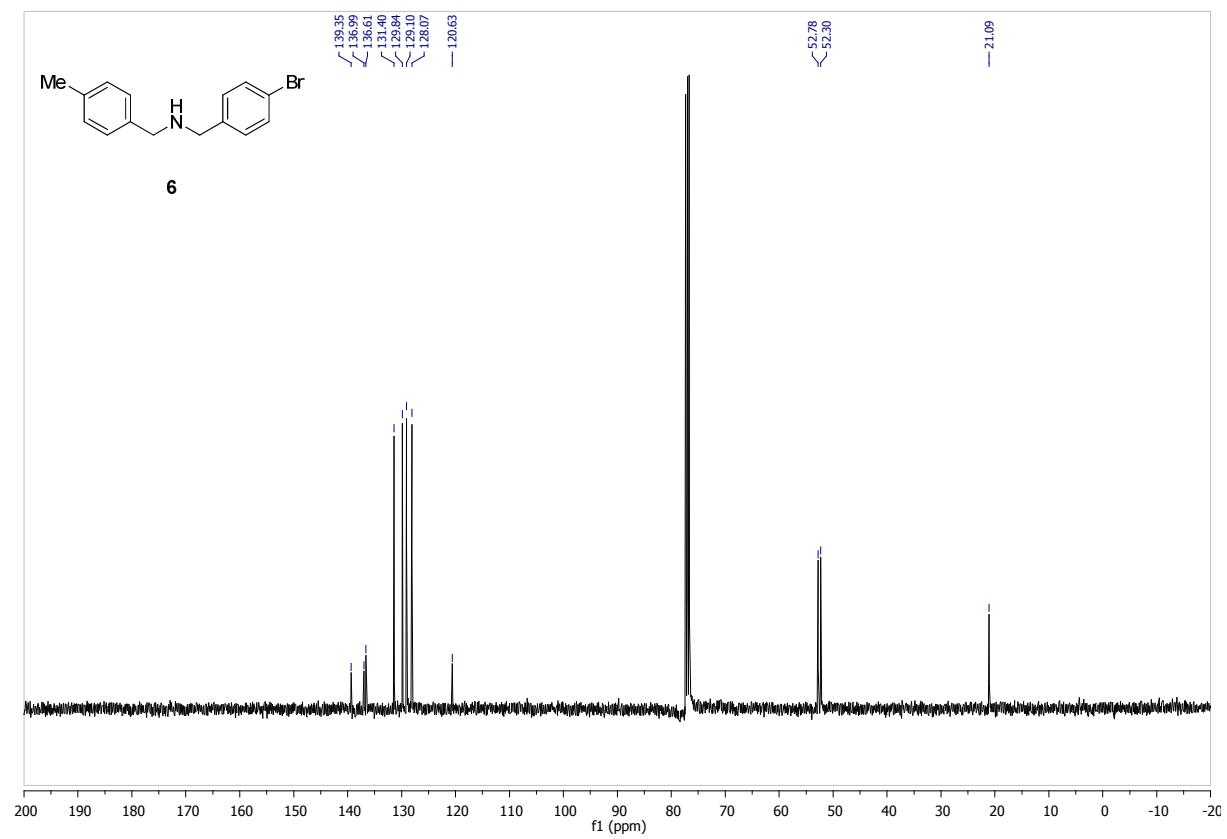
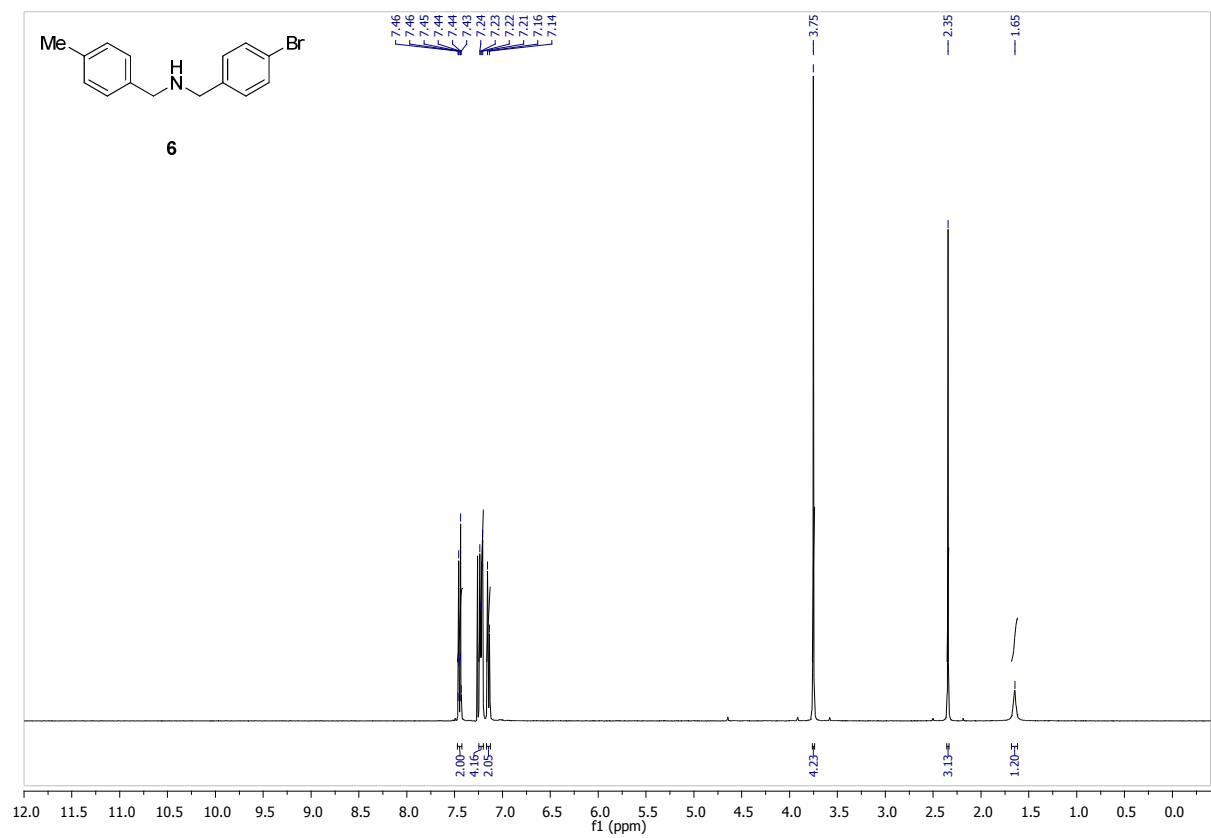
Leukemia	
CCRF-CEM	65.46
HL-60(TB)	81.58
K-562	51.95
MOLT-4	58.01
RPMI-8226	46.77
SR	47.53
Non-Small Cell Lung Cancer	
A549/ATCC	64.39
EKVX	54.52
HOP-92	46.21
NCI-H226	72.87
NCI-H23	80.51
NCI-H322M	101.57
NCI-H460	67.16
NCI-H522	74.52
Colon Cancer	
HCC-2998	96.40
HCT-116	67.07
HCT-15	75.62
HT29	70.65
KM12	82.25
SW-620	87.31
CNS Cancer	
SF-268	79.95
SF-295	69.87
SF-539	82.55
SNB-19	78.96
SNB-75	62.58
Melanoma	
LOX IMVI	84.55
MALME-3M	96.67
M14	69.09
MDA-MB-435	88.26
SK-MEL-2	87.41
SK-MEL-28	96.94
SK-MEL-5	58.40
UACC-257	89.83
UACC-62	58.81
Ovarian Cancer	
IGROV1	81.18
OVCAR-3	82.05
OVCAR-4	64.11
OVCAR-5	115.28
OVCAR-8	76.68
NCI/ADR-RES	64.87
SK-OV-3	85.26
Renal Cancer	
786-0	77.60
A498	55.27
ACHN	76.19
CAKI-1	70.34
RXF 393	73.66
SN12C	78.86
TK-10	92.74
UO-31	46.83
Prostate Cancer	
PC-3	40.97
DU-145	90.42
Breast Cancer	
MCF7	52.84
MDA-MB-231/ATCC	66.63
HS 578T	69.73
BT-549	76.57
T-47D	57.75
MDA-MB-468	61.02
Mean	72.86
Delta	31.89
Range	74.31

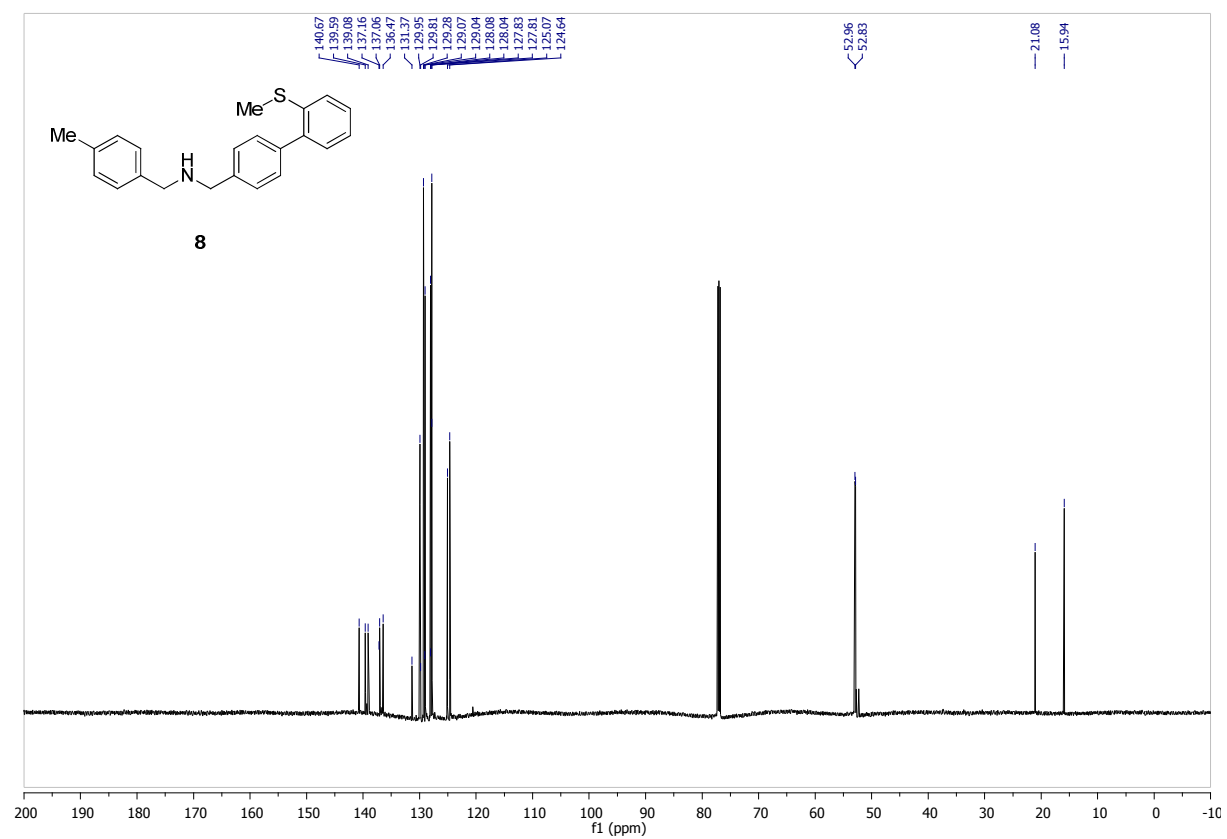
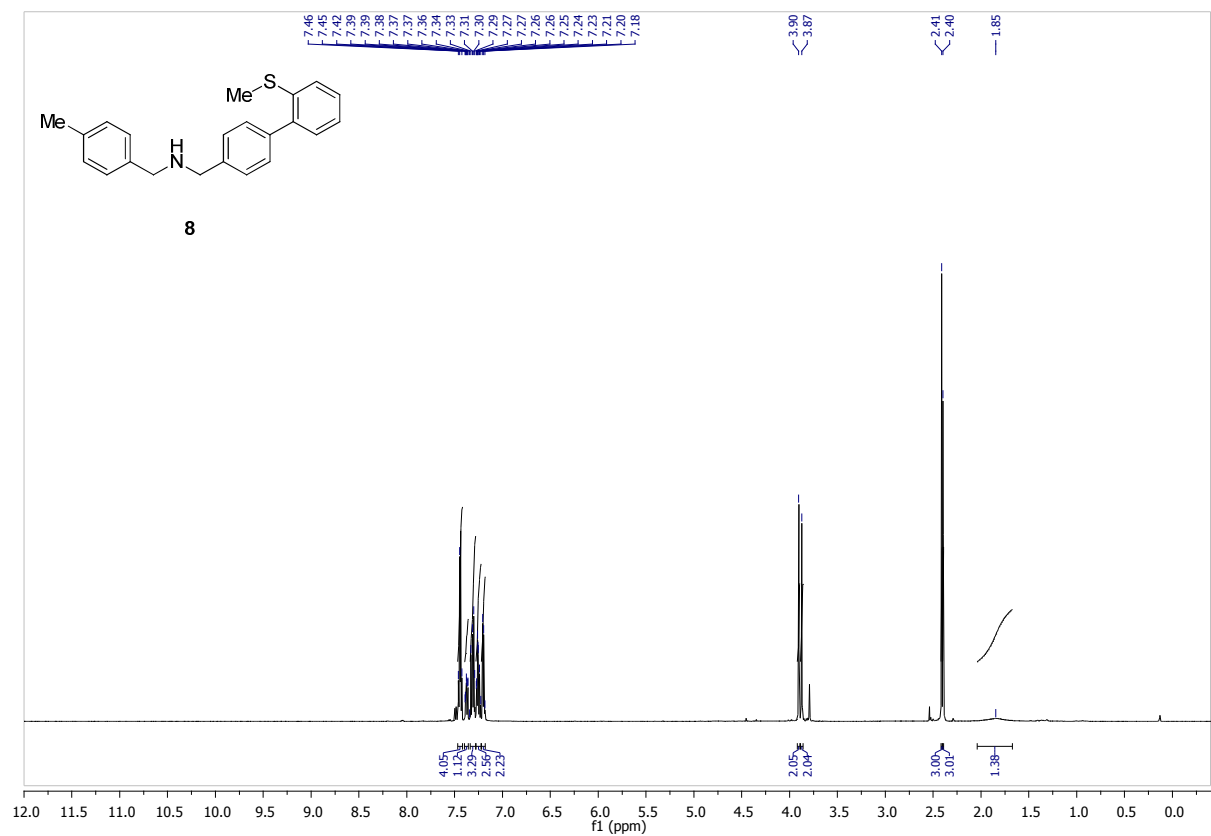


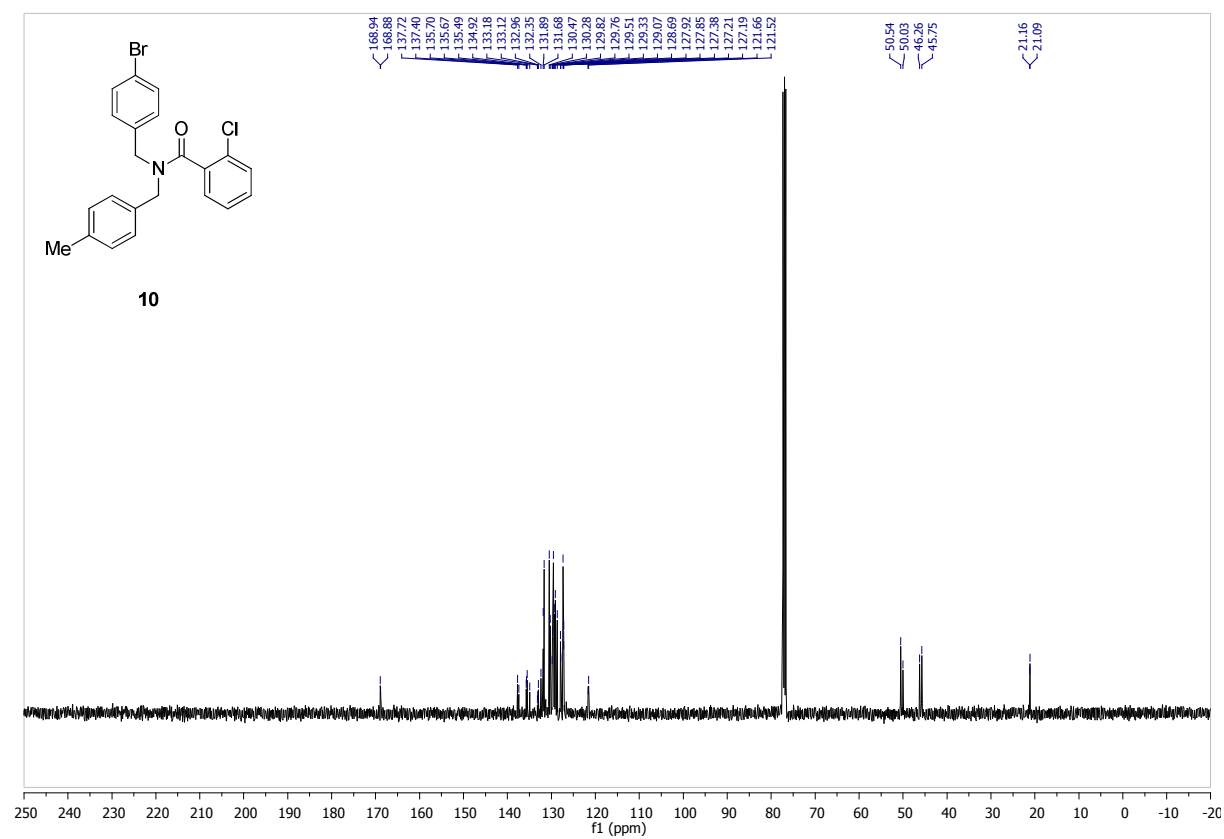
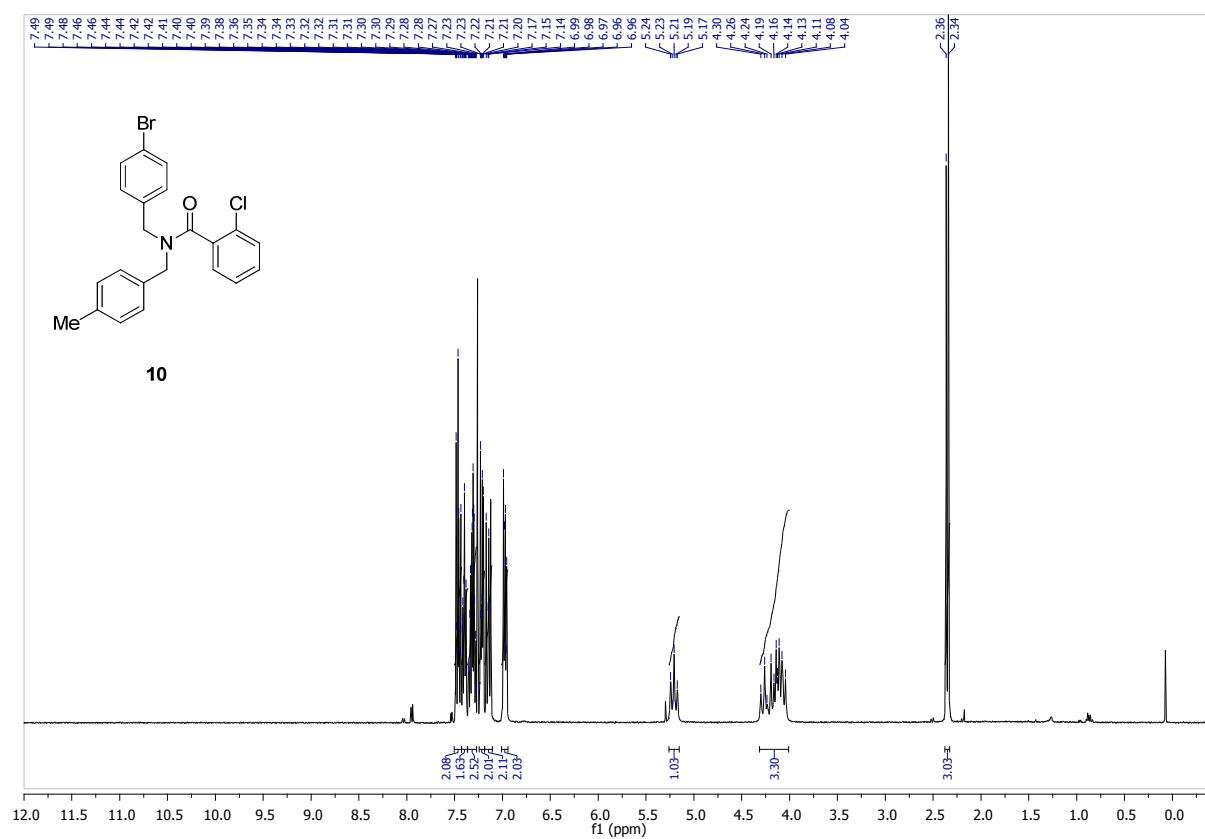
Copies of NMR spectra

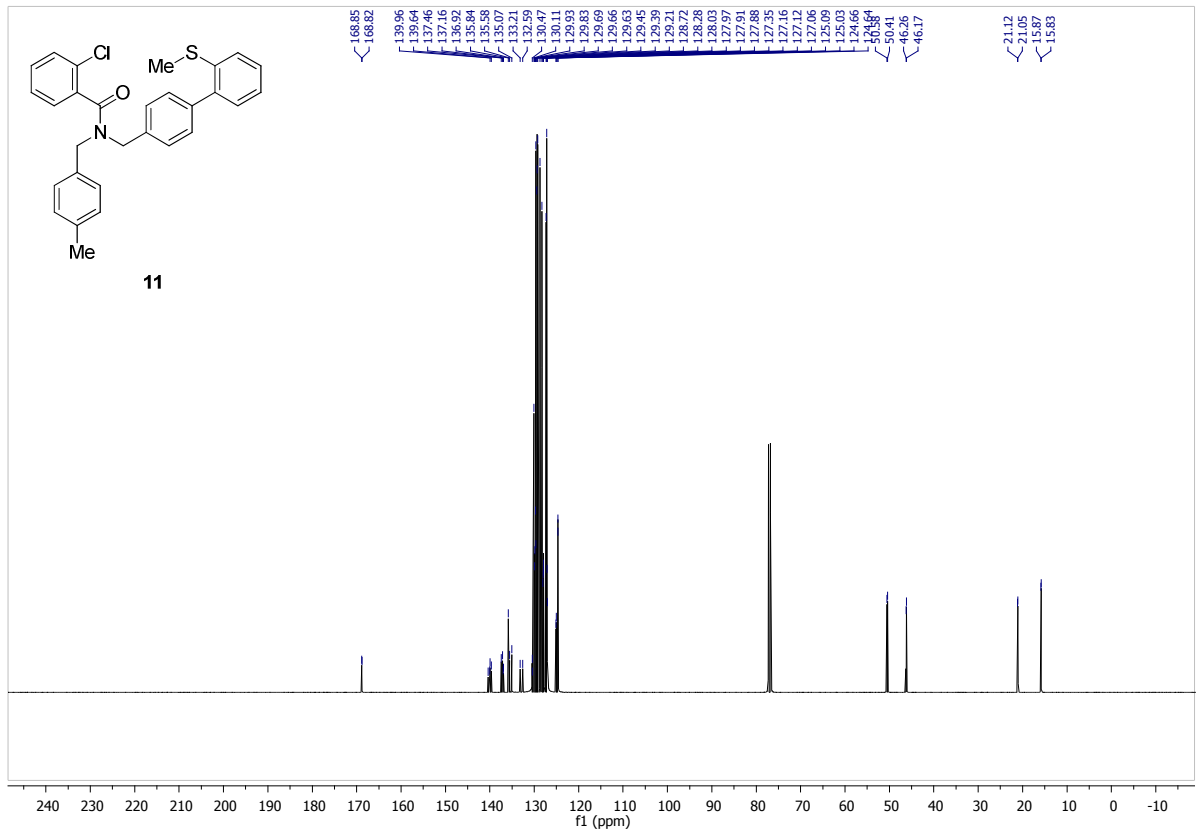
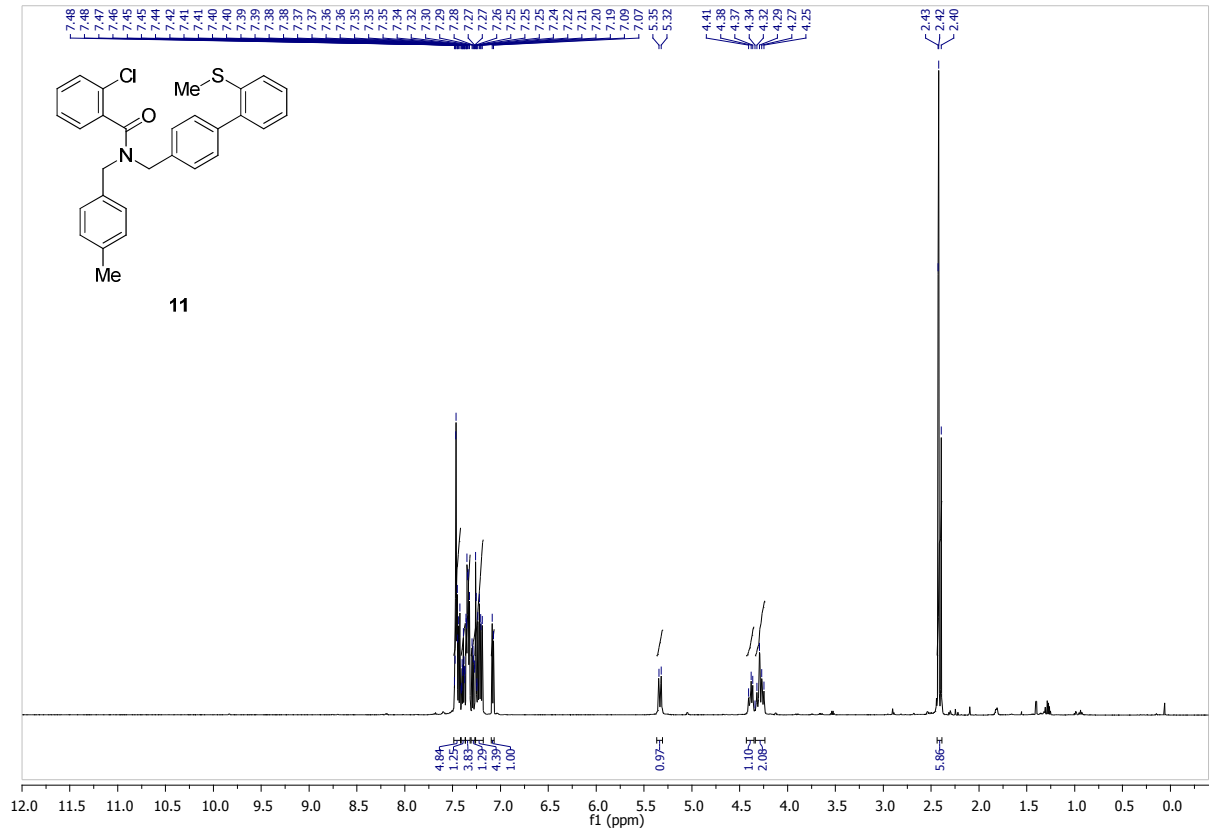






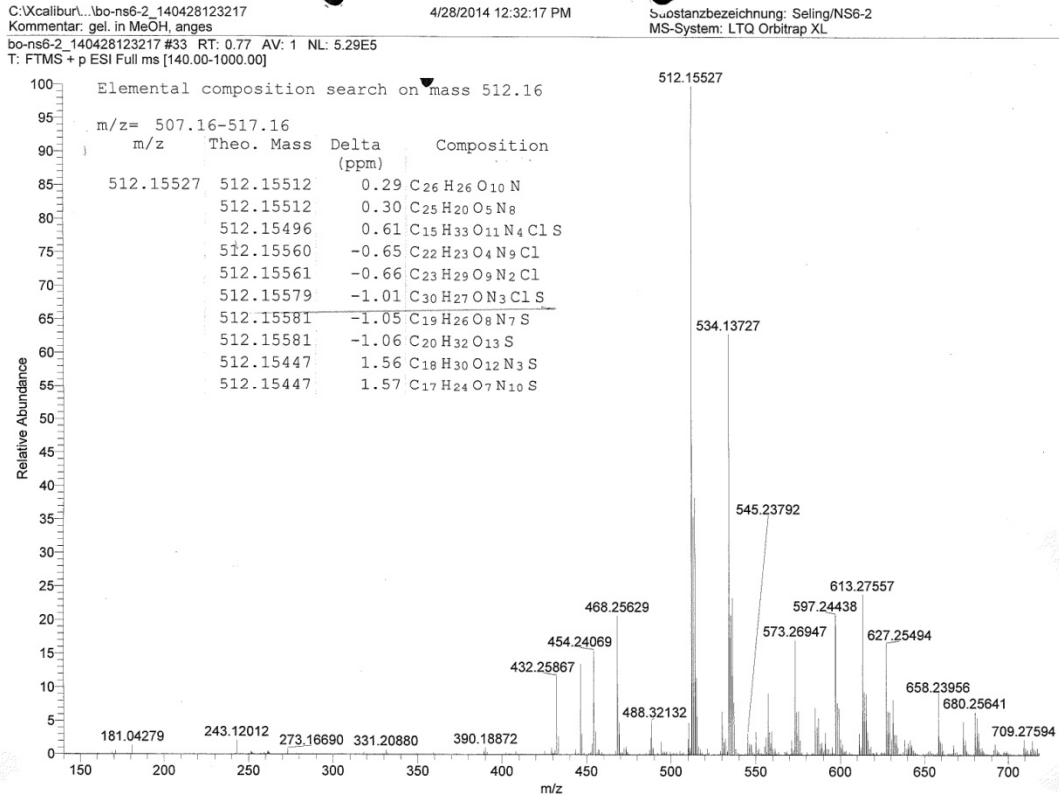




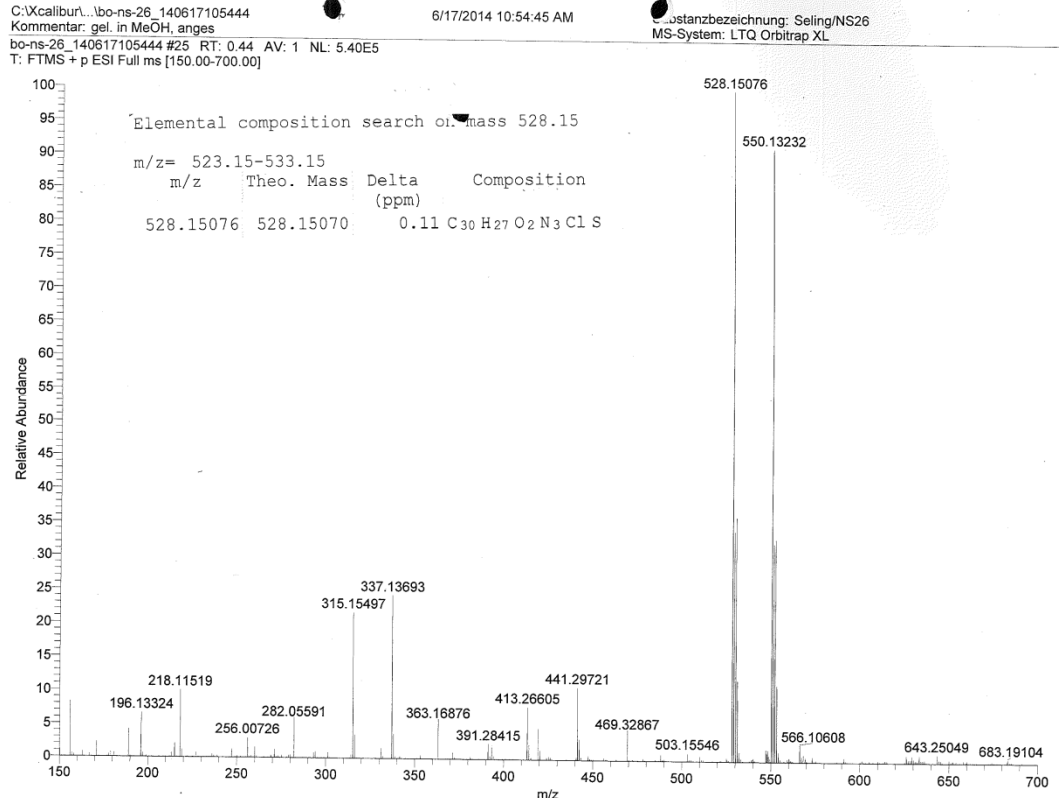


Copies of MS spectra

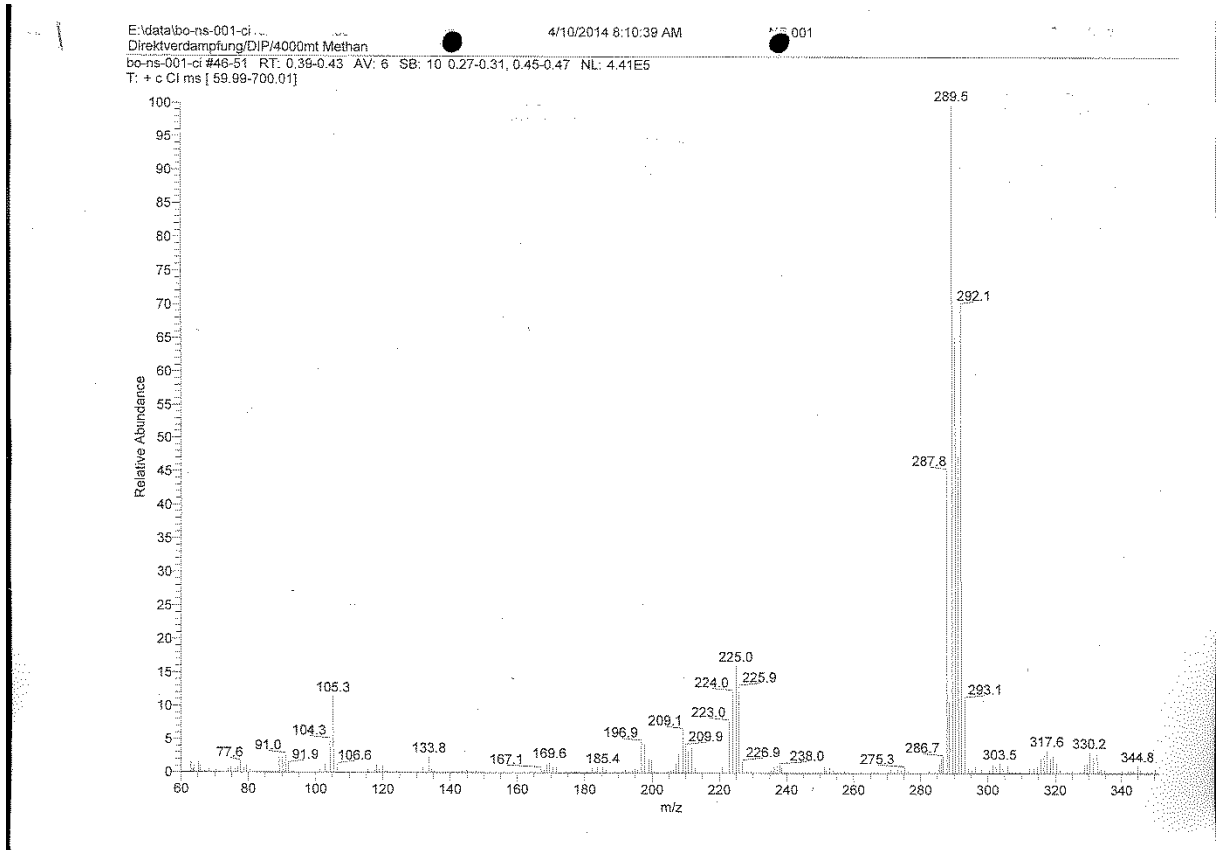
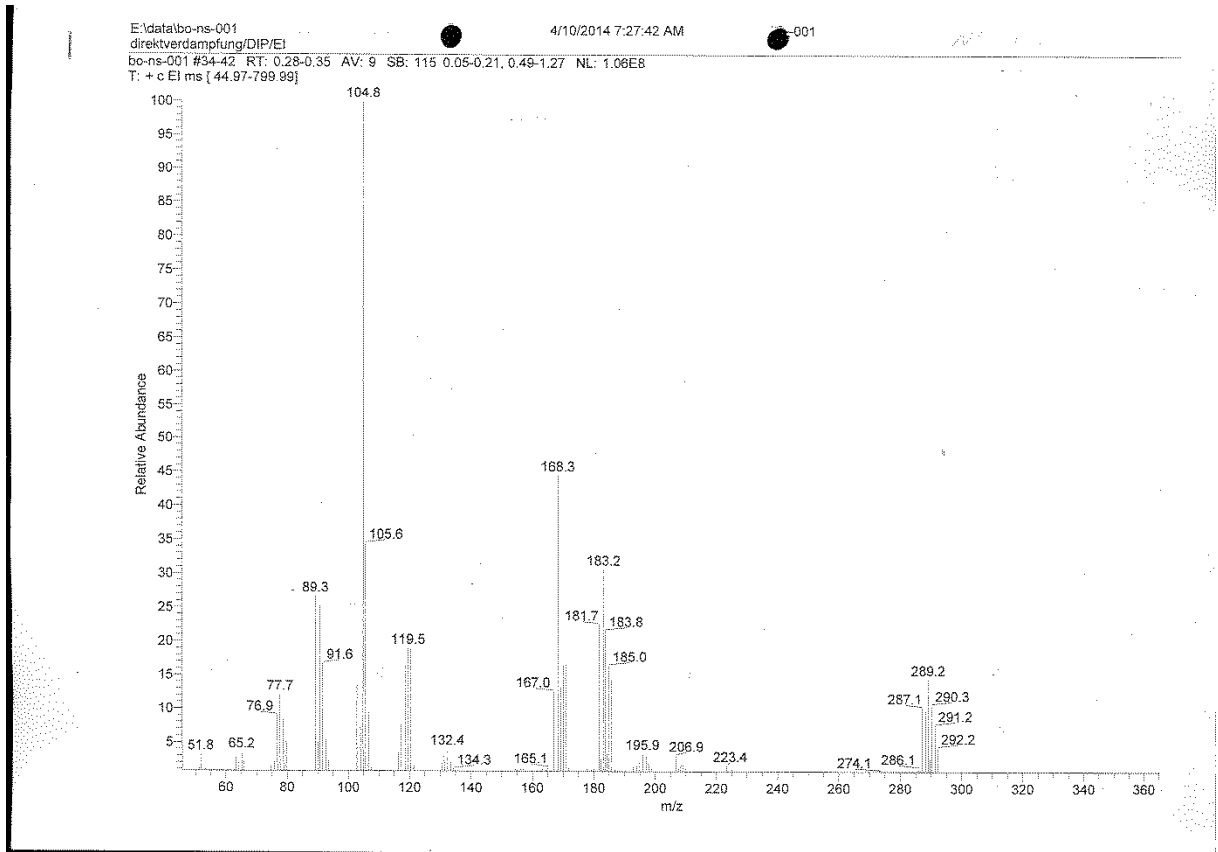
Compound 2



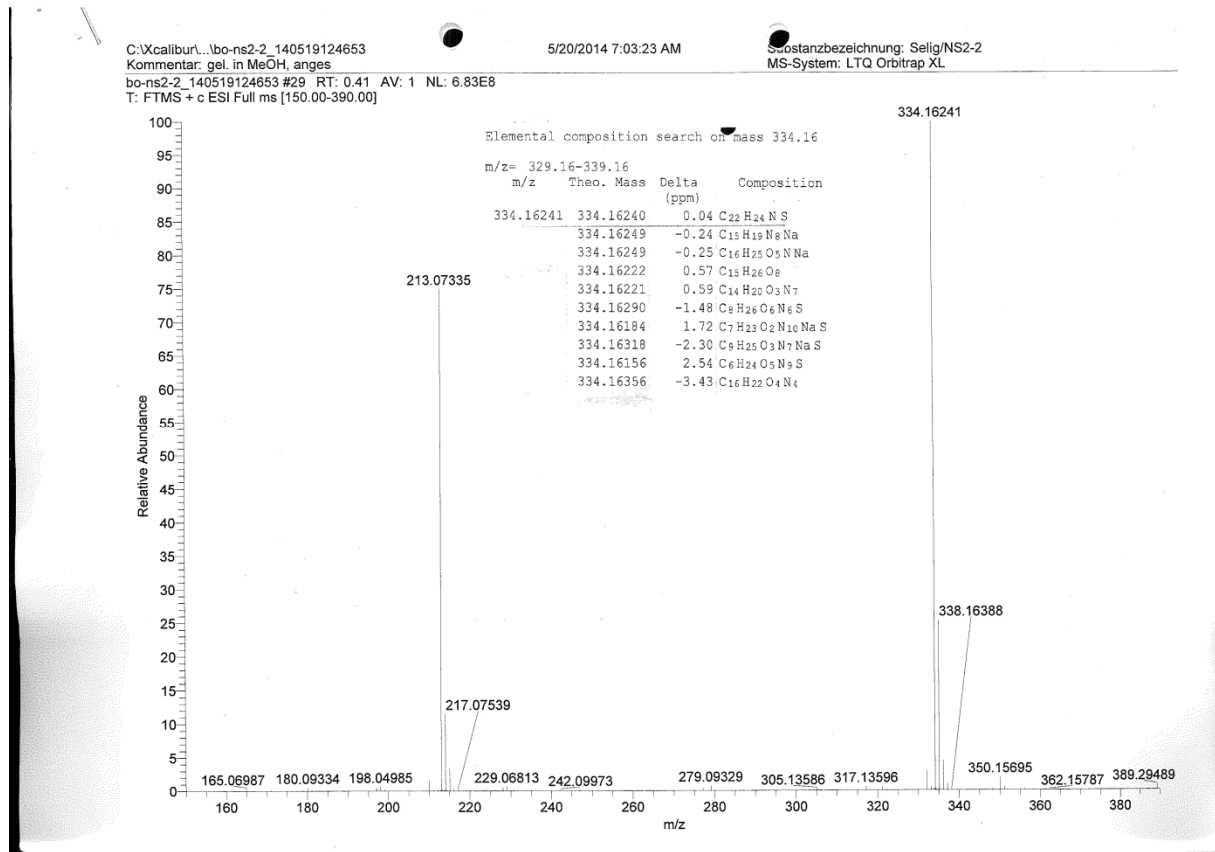
Compound 3



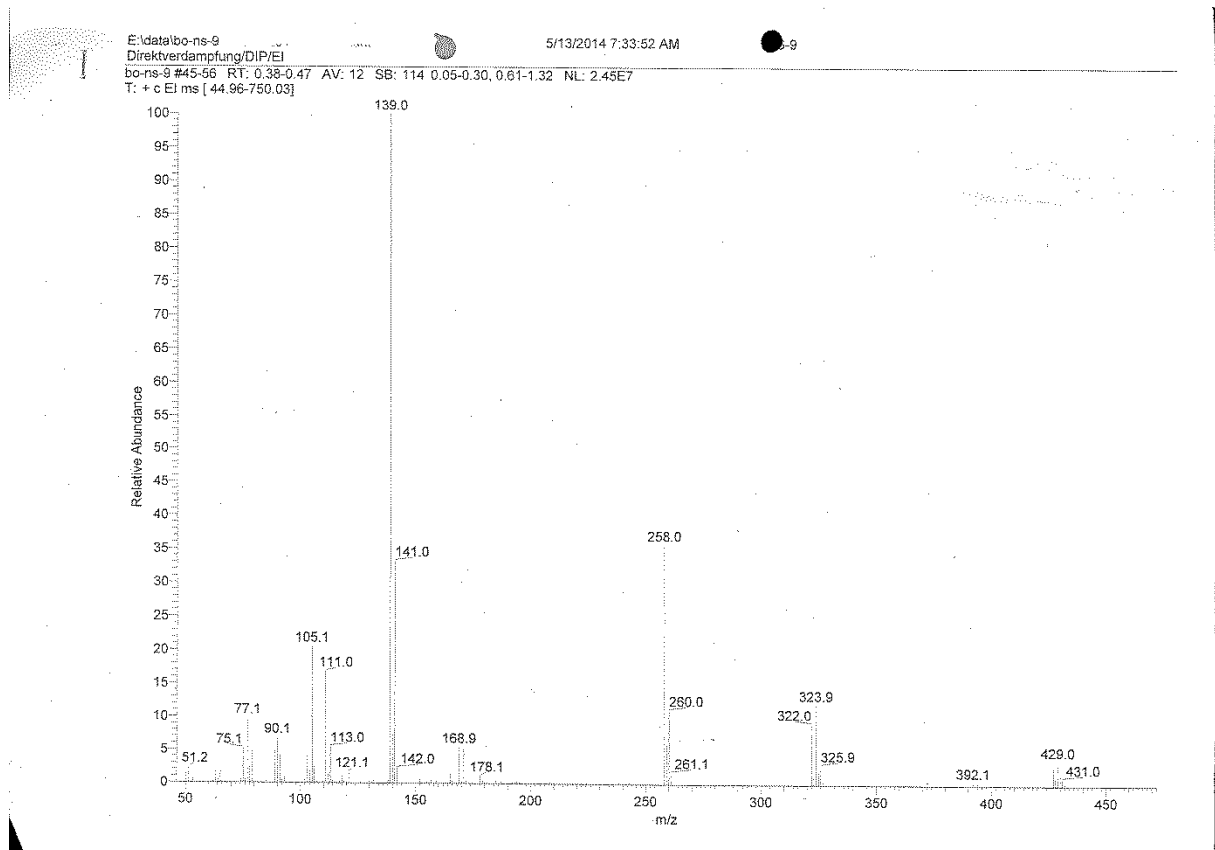
Compound 6

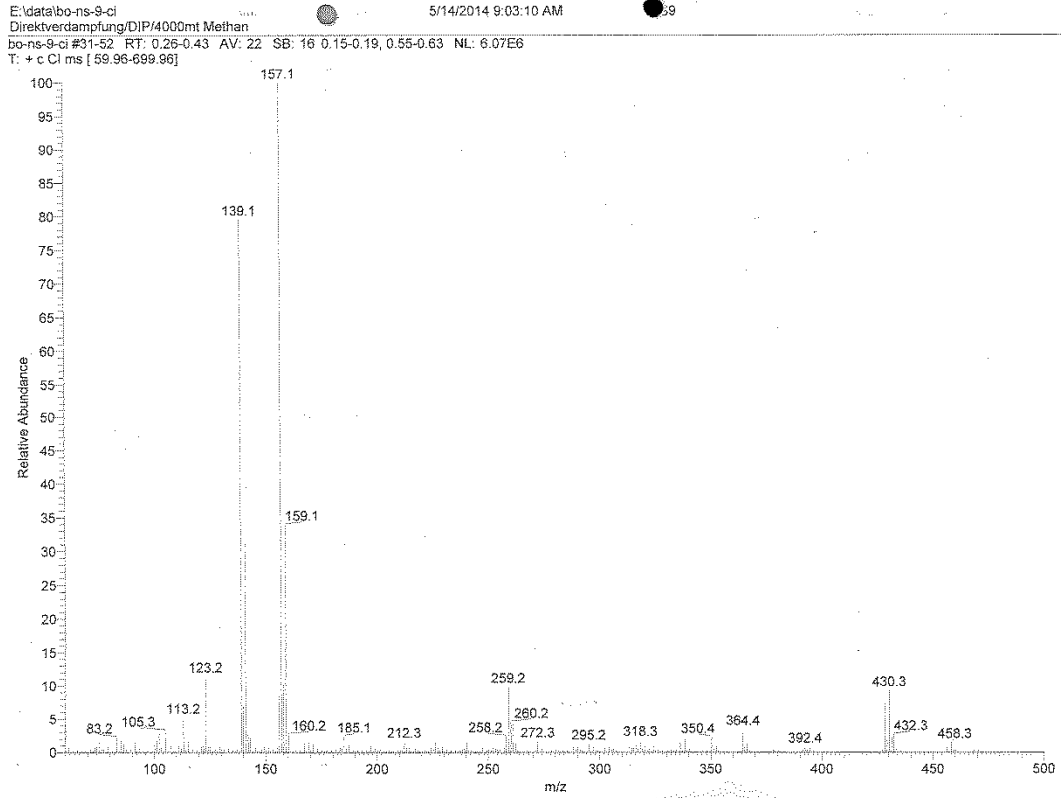


Compound 8:



Compound 10





Compound 11

