

Supplementary Information

Boron Uptake, Localization, and Speciation in Marine Brown Algae

Eric P. Miller¹, Youxian Wu², and Carl J. Carrano¹

¹Department of Chemistry and Biochemistry
and

²Department of Civil, Construction, and Environmental Engineering
San Diego State University
San Diego, CA 92182-1030

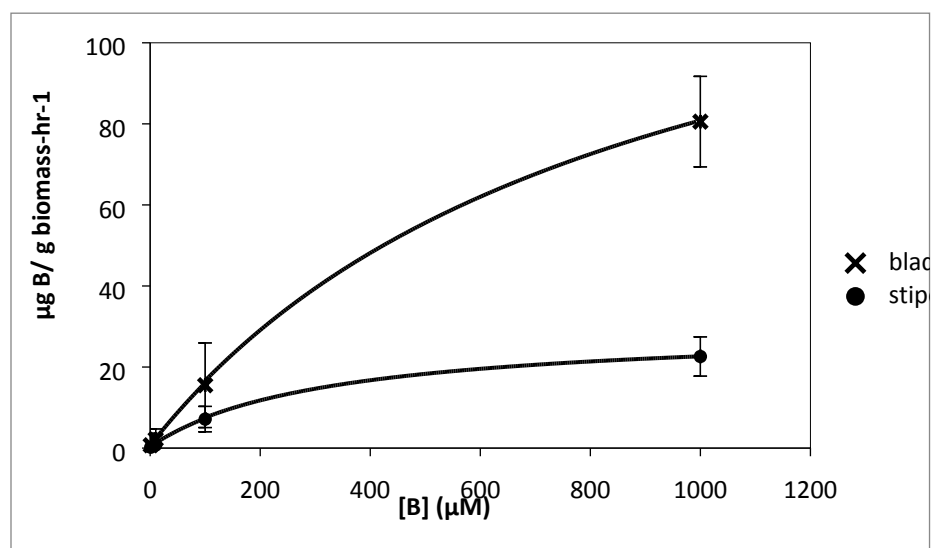


Figure S1. Uptake of boron by *Macrocyctis* blade (upper) after two hour incubation and stipe (lower) after four hour incubation in ASW medium as a function of boron concentration. Data points are shown as open circles (blade) or closed circles (stipe) while the solid line represents fits to the data as described in the text. Error bars represent ± 1 S.D. from duplicate experiments with replicate concentration points for each.

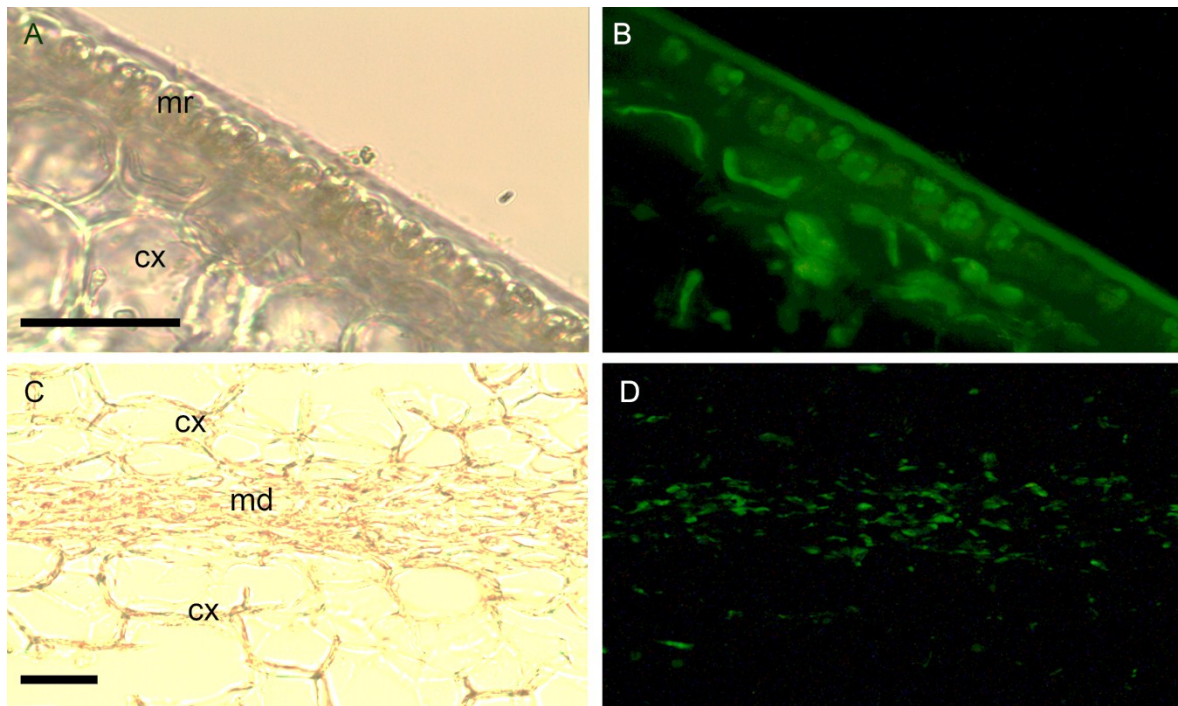


Figure S2. *Macrocyctis* blade. Meristoderm and cortex (A) Brightfield transmission, (B) B-FITC fluorescence. Medulla (C) Brightfield transmission, (D) B-FITC fluorescence. Meristoderm (mr), cortex (cx), medulla (md). Scalebars, 40 μ m.

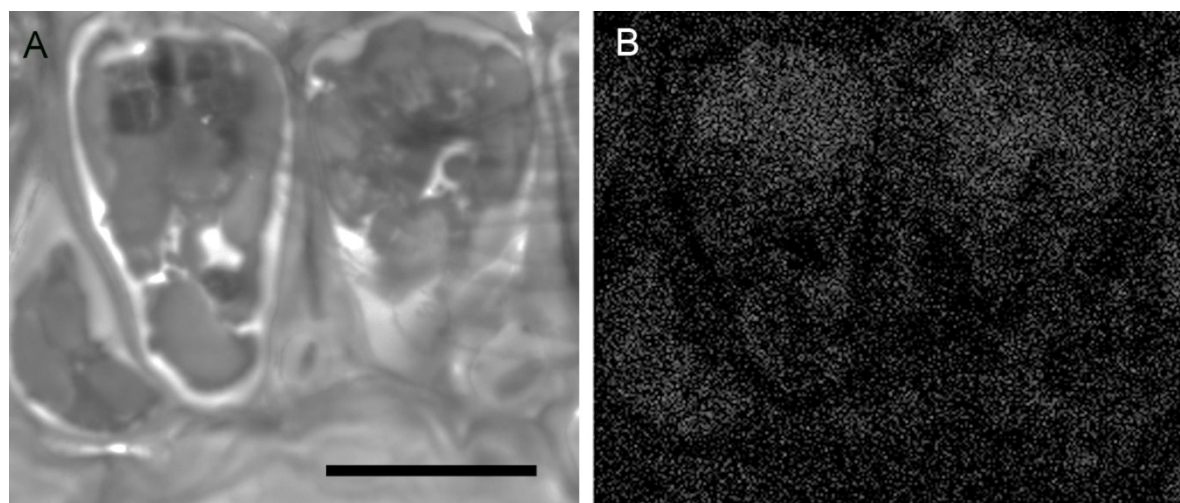


Figure S3. *Macrocystis* blade meristoderm. (A) STEM, (B) EDS. Scalebar, 5 μm .