

Electronic Supplementary Material (ESI) for New Journal of Chemistry

**Palladium catalyzed decarboxylative acylation of arylboronic acid with ethyl cyanoacetate as a new acylating agent: synthesis of alkyl aryl ketones**

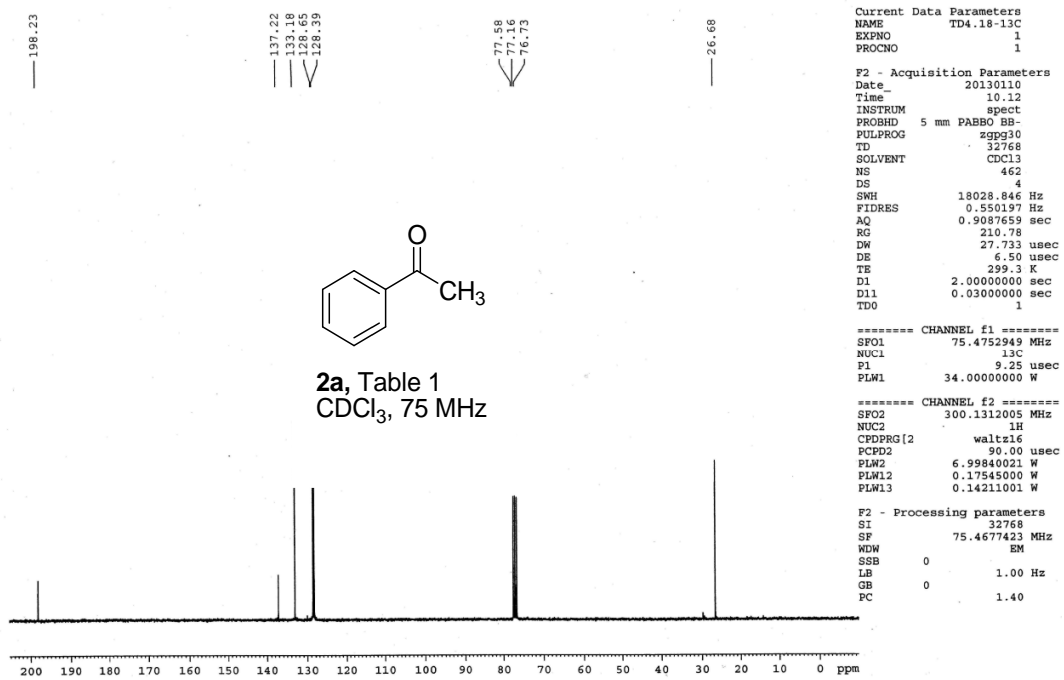
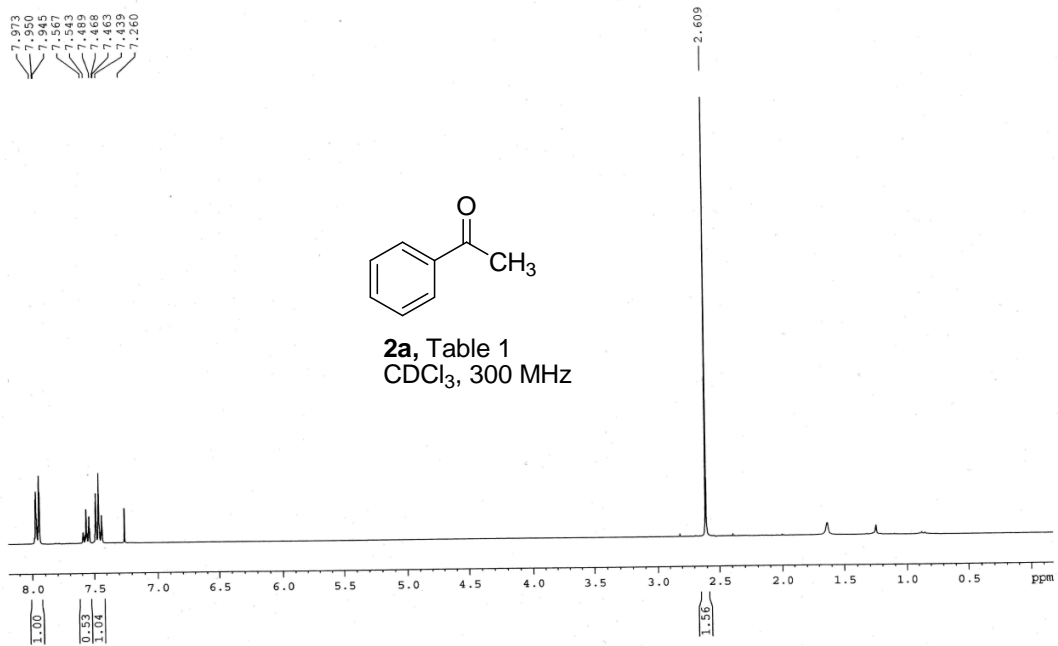
Md Yousuf,<sup>a</sup> Tuluma Das,<sup>b</sup> and Susanta Adhikari\*<sup>a</sup>

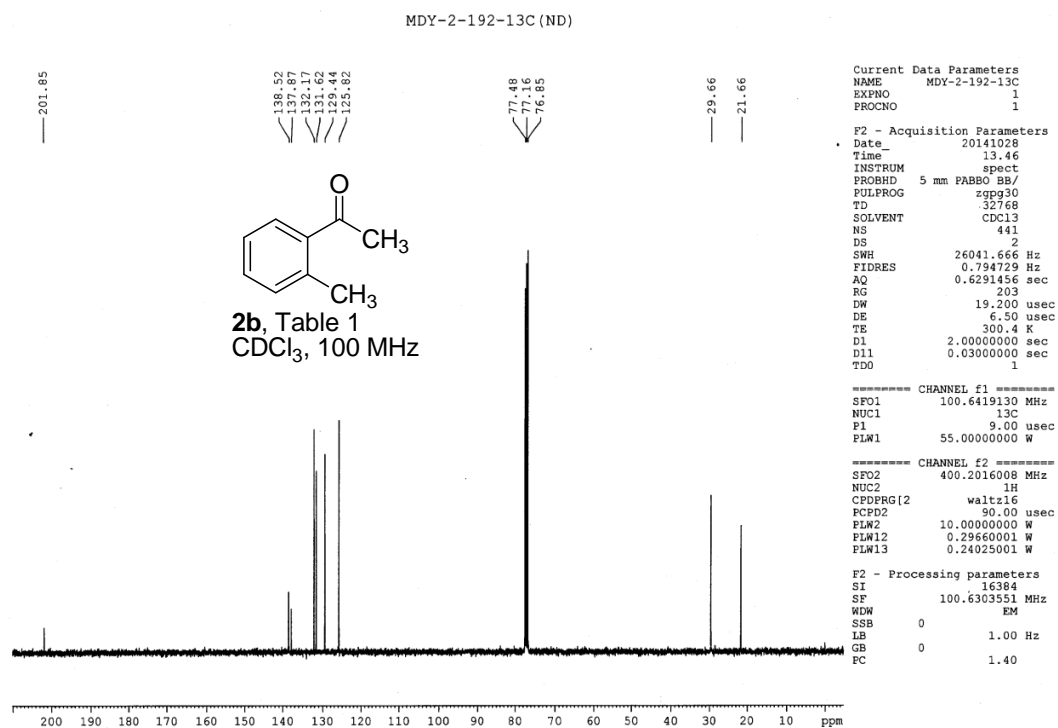
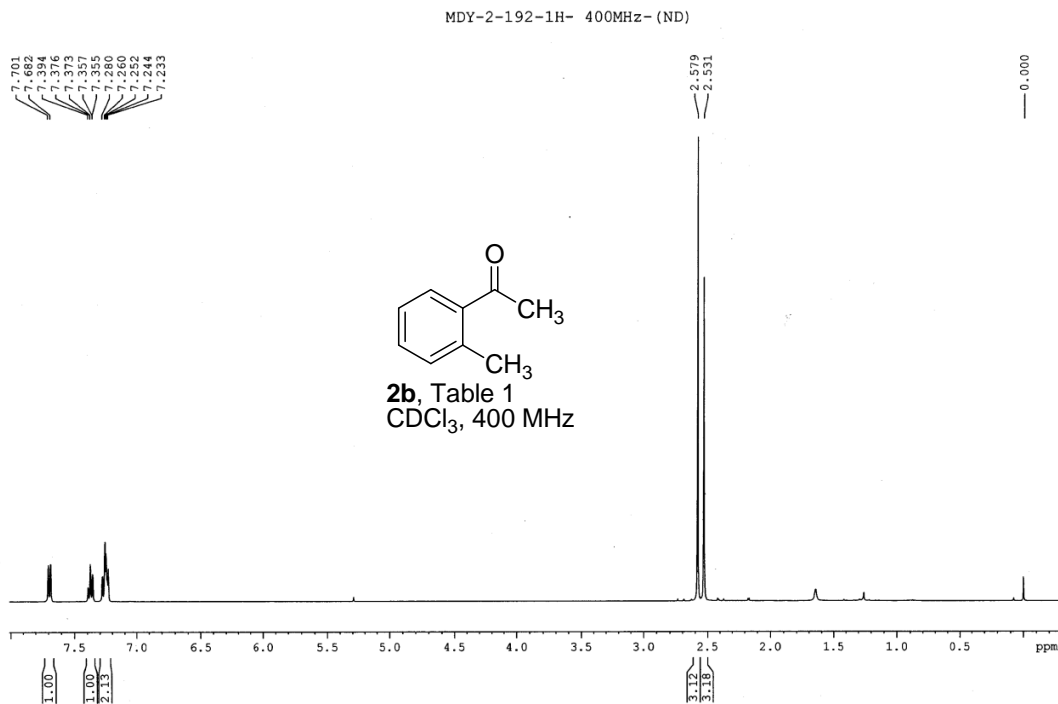
<sup>a</sup>Department of chemistry, University of Calcutta, 92, A. P. C. Road, Kolkata 700009 (India)

E-mail: [adhikarisusanta@yahoo.com](mailto:adhikarisusanta@yahoo.com)

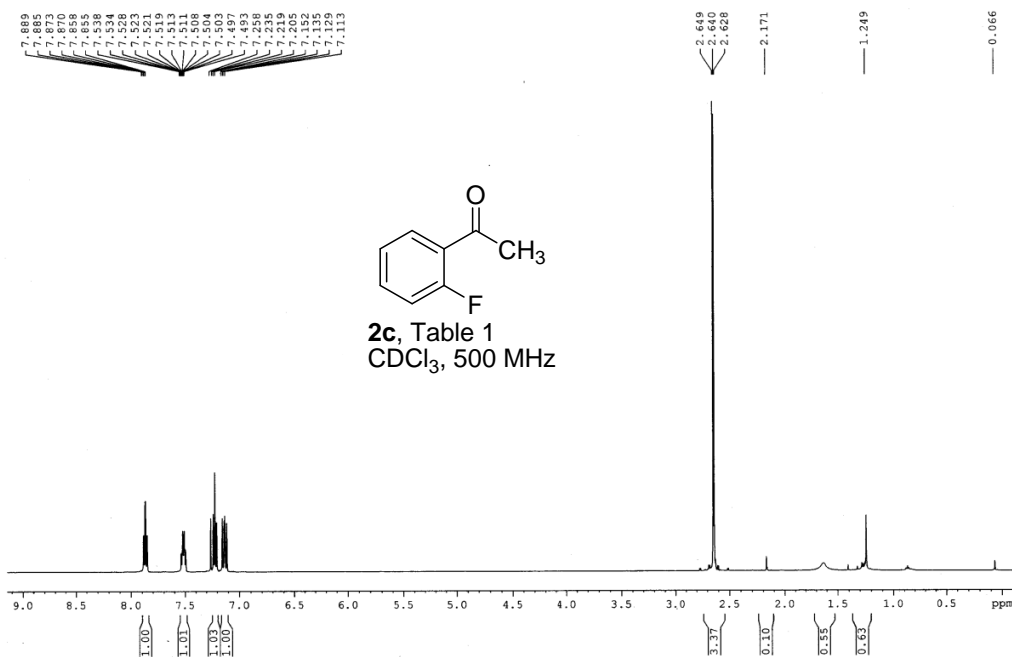
<sup>b</sup>Department of Organic Chemistry, Indian Association for the Cultivation of Science, Jadavpur, Kolkata 700032 (India).

<b>Table of Content</b>	<b>Page No.</b>
<sup>1</sup> H and <sup>13</sup> C NMR Spectra of all Compounds (Table 1 and 2).....	S2-S32

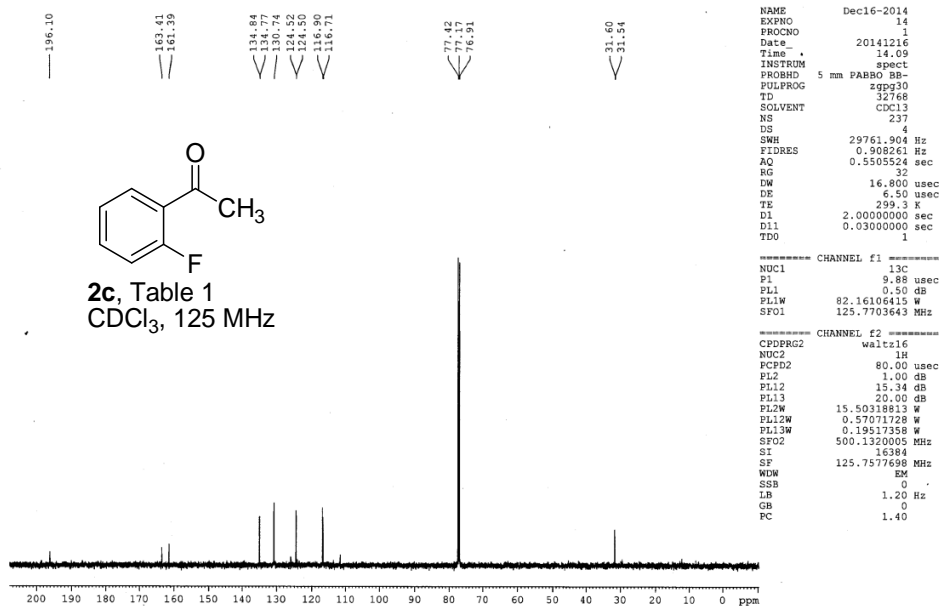




MDY2.197-1H(SKD) 11dec14.5



MDY2.197-13C(SKD) 16dec14.14

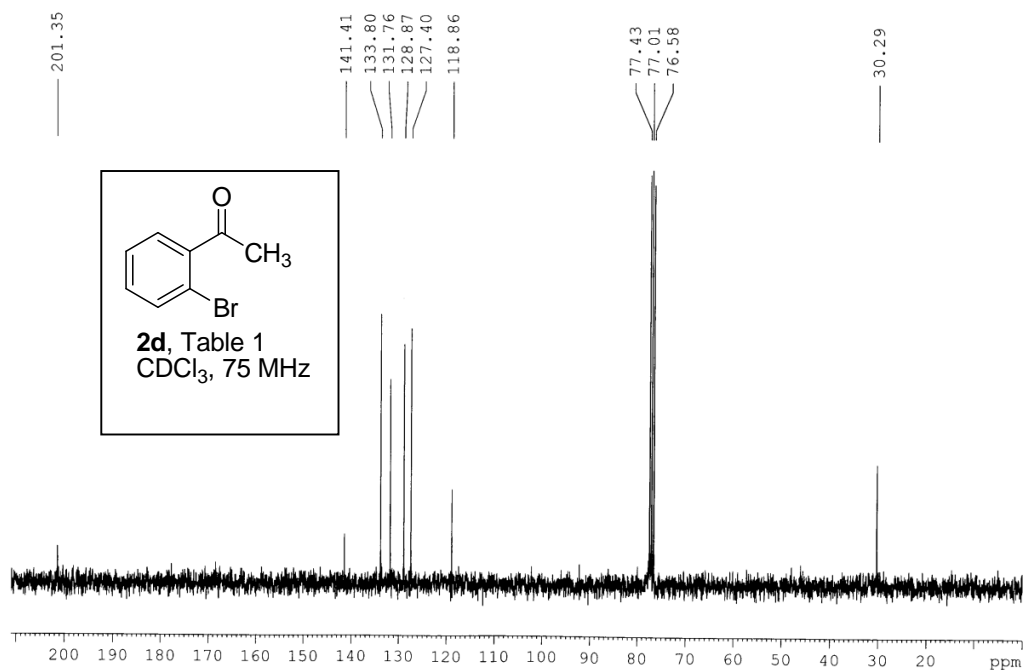
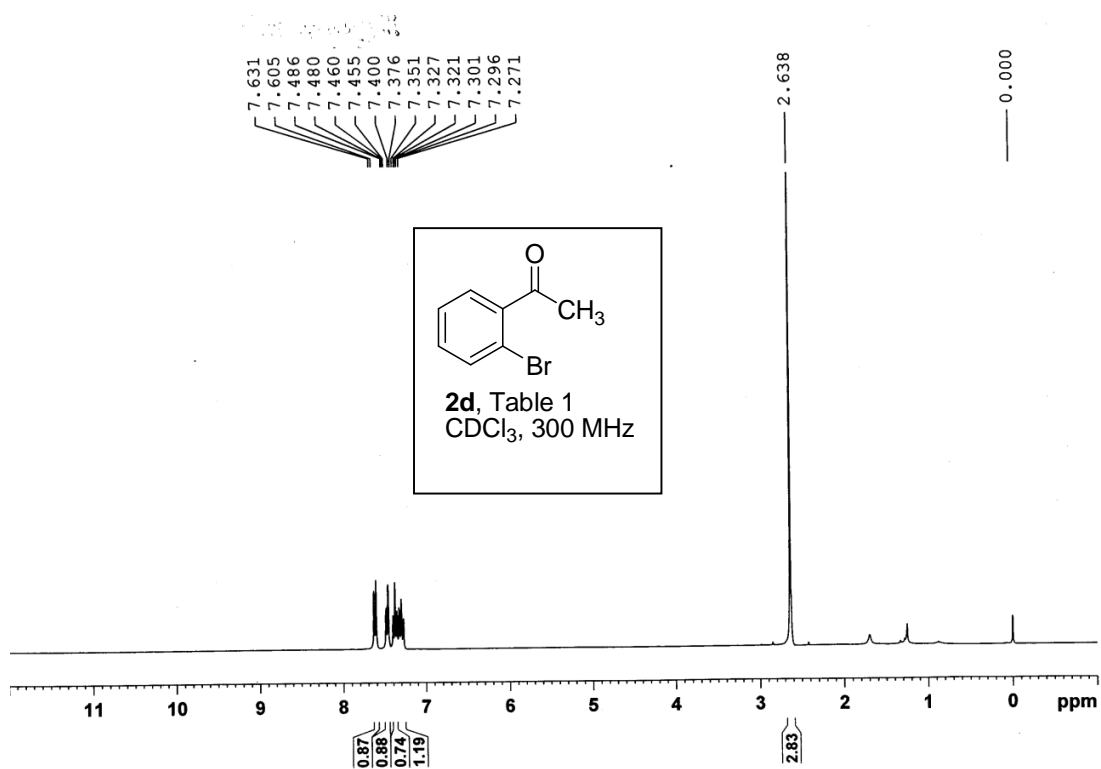


```

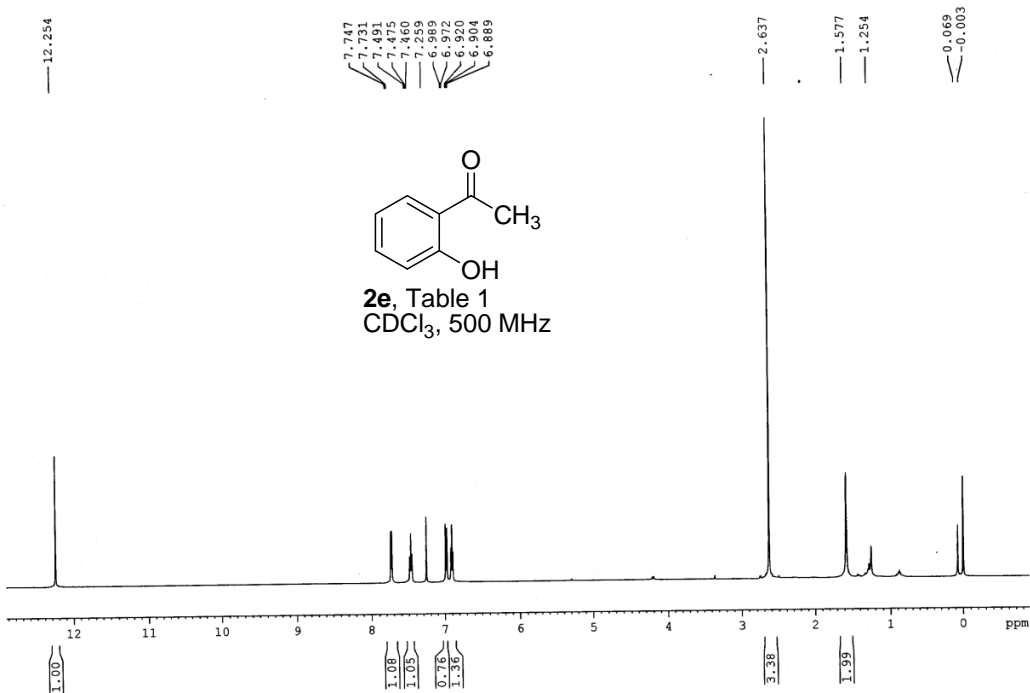
NAME      Dec16-2014
EXPNO    14
PROCNO   1
Date_    20141216
Time     14.09
INSTRUM  spect
PROBHD   5 mm PABBO B6-
PULPROG  zgpg30
TD        32768
SOLVENT  CDCl3
NS        237
DS        4
SWH       29761.904 Hz
FIDRES   0.908261 Hz
AQ        0.5505524 sec
RG         32
DW        16.800 usec
DE        6.50 usec
TE        299.3 K
D1        2.0000000 sec
D11       0.0300000 sec
TDO       1

===== CHANNEL f1 =====
NUC1      13C
P1         9.88 usec
PL1        0.50 dB
PL1W      82.16106415 W
SF01      125.7703643 MHz

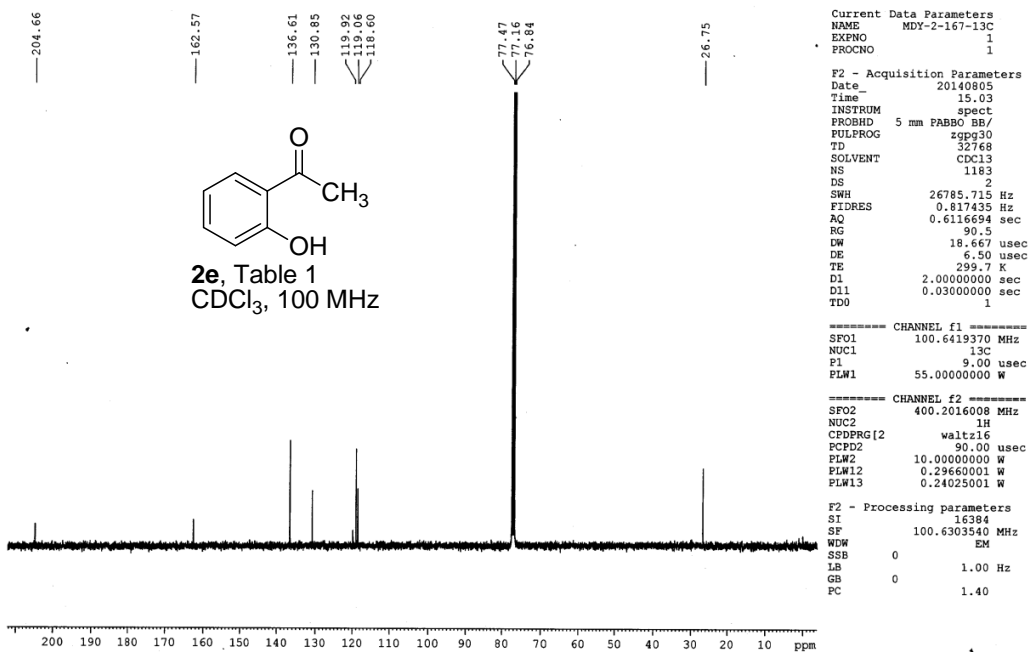
===== CHANNEL f2 =====
CPDPRG2   waltz16
NUC2      1H
PCPD2     80.00 usec
PL2        1.00 dB
PL12      15.34 dB
PL13      20.00 dB
PL1W      15.50318813 W
PL12W     0.57071728 W
PL13W     0.19517358 W
SF02      500.1320005 MHz
SI         16384
SP        125.7577698 MHz
WDM       EM
SSB       0
LB        1.20 Hz
GB         0
PC         1.40
    
```



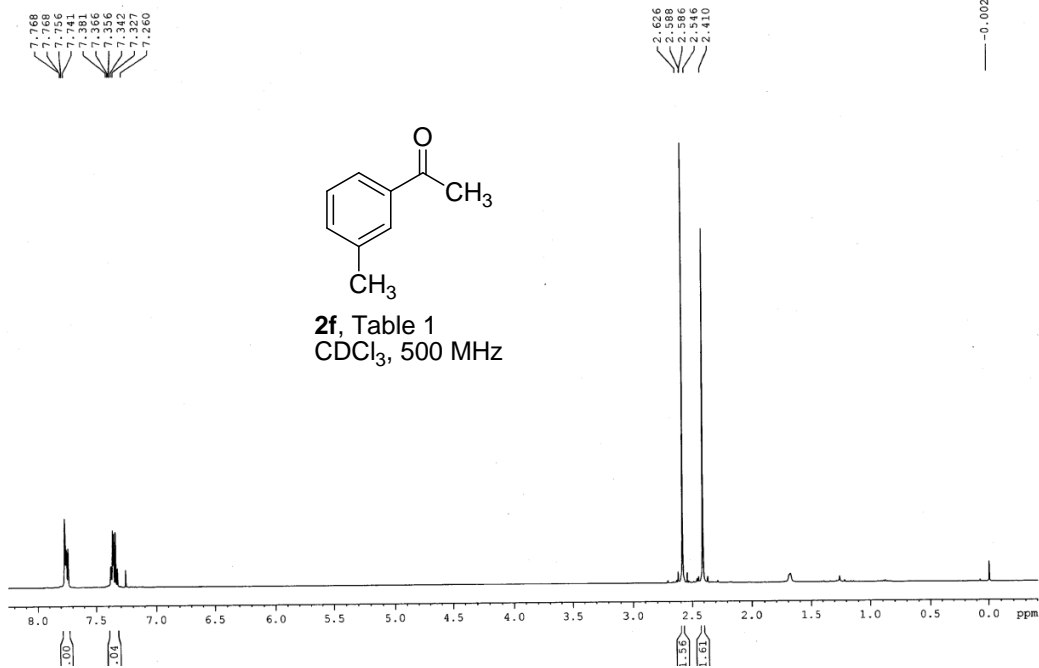
MDY-2-167-1H (SR) 500MHz.



MDY-2-167-13C (ND)

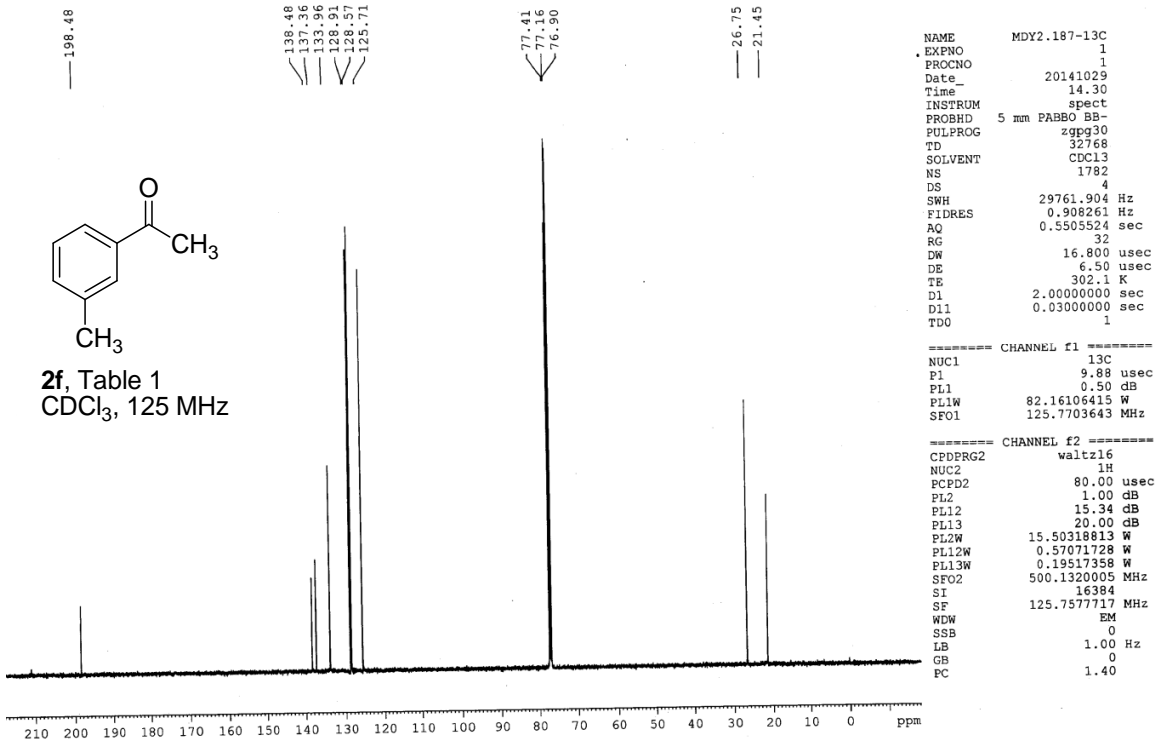


MDY2.187-1H(SKD) 29oct14.9



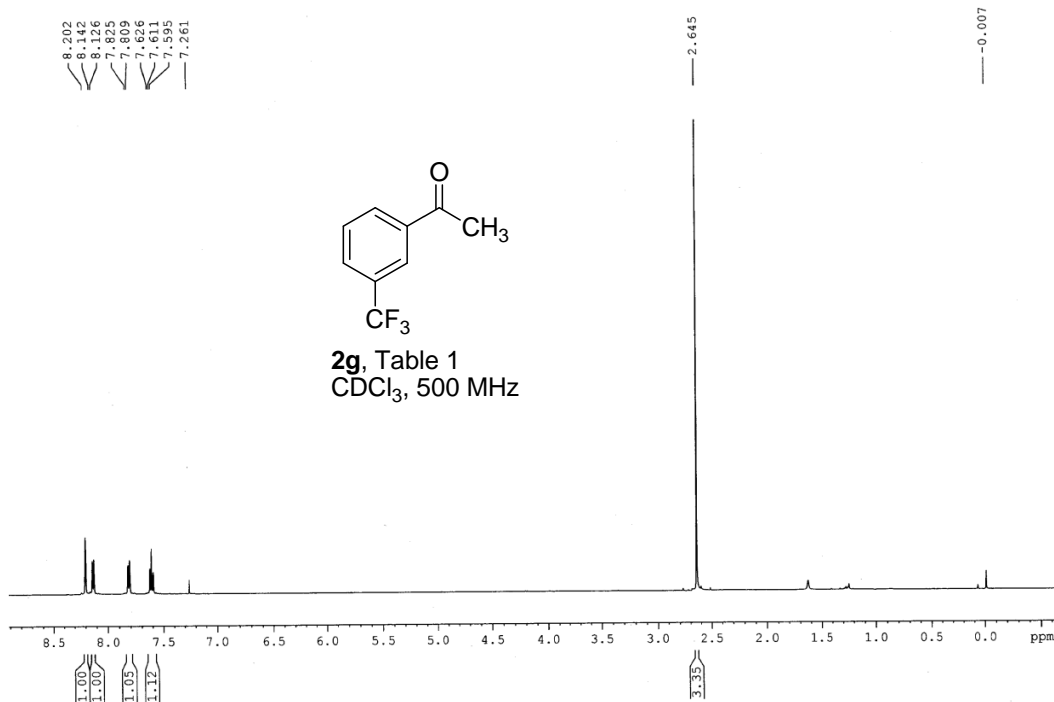
2f, Table 1  
CDCl<sub>3</sub>, 500 MHz

MDY2.187-13C(SKD)

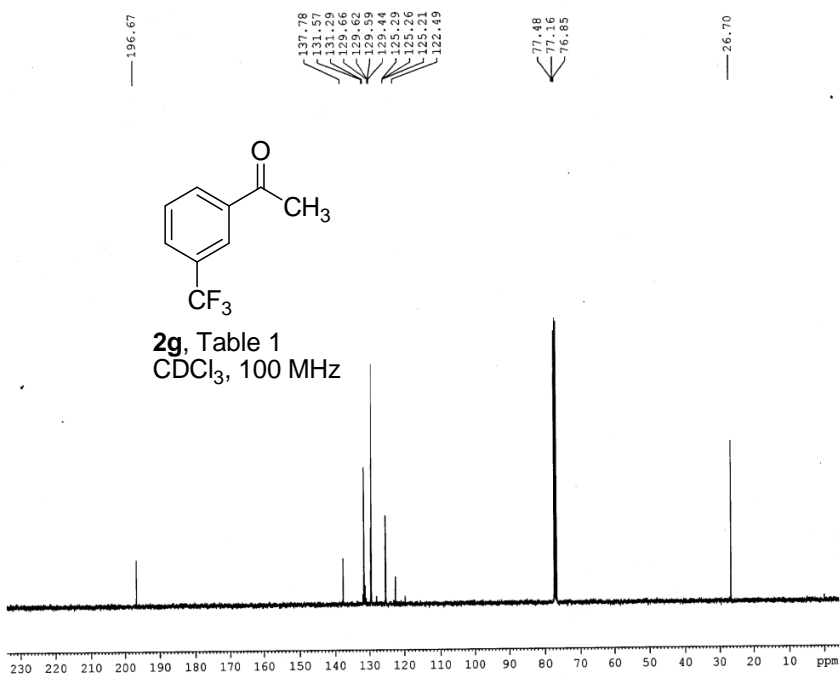


2f, Table 1  
CDCl<sub>3</sub>, 125 MHz

MDY-2-188-1H(SR) 500MHz.



MDY-2-188-13C (ND)



Current Data Parameters  
NAME MDY-2-188-13C  
EXPNO 1  
PROCNO 1

F2 - Acquisition Parameters  
Date\_ 20141105  
Time 13.48  
INSTRUM spect  
PROBHD 5 mm PABBO BB/  
PULPROG zgpg30  
TD 32768  
SOLVENT CDCl3  
NS 400  
DS 2  
SWH 26041.666 Hz  
FIDRES 0.794729 Hz  
AQ 0.6291456 sec  
RG 203  
DW 19.200 usec  
DE 6.50 usec  
TE 301.8 K  
D1 2.0000000 sec  
D11 0.03000000 sec  
TDO 1

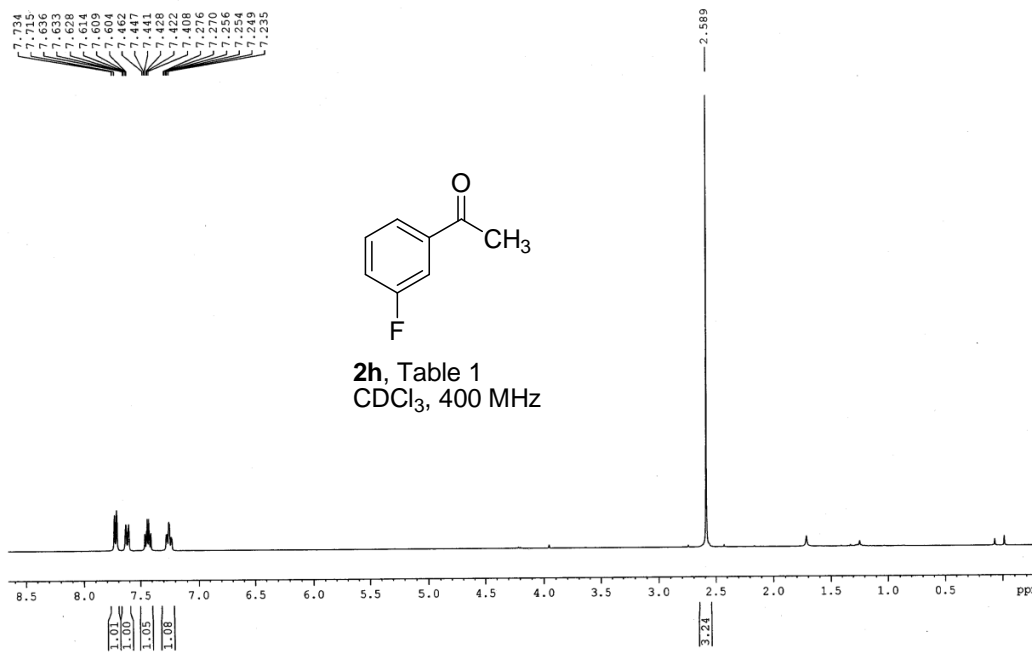
===== CHANNEL f1 =====  
SF01 100.6419130 MHz  
NUC1 13C  
P1 9.00 usec  
PLW1 55.00000000 W

===== CHANNEL f2 =====  
SF02 400.2016008 MHz  
NUC2 1H  
CPDPRG2 waltz16  
PCPD2 90.00 usec  
PLW2 10.00000000 W  
PLW12 0.29660001 W  
PLW13 0.24025001 W

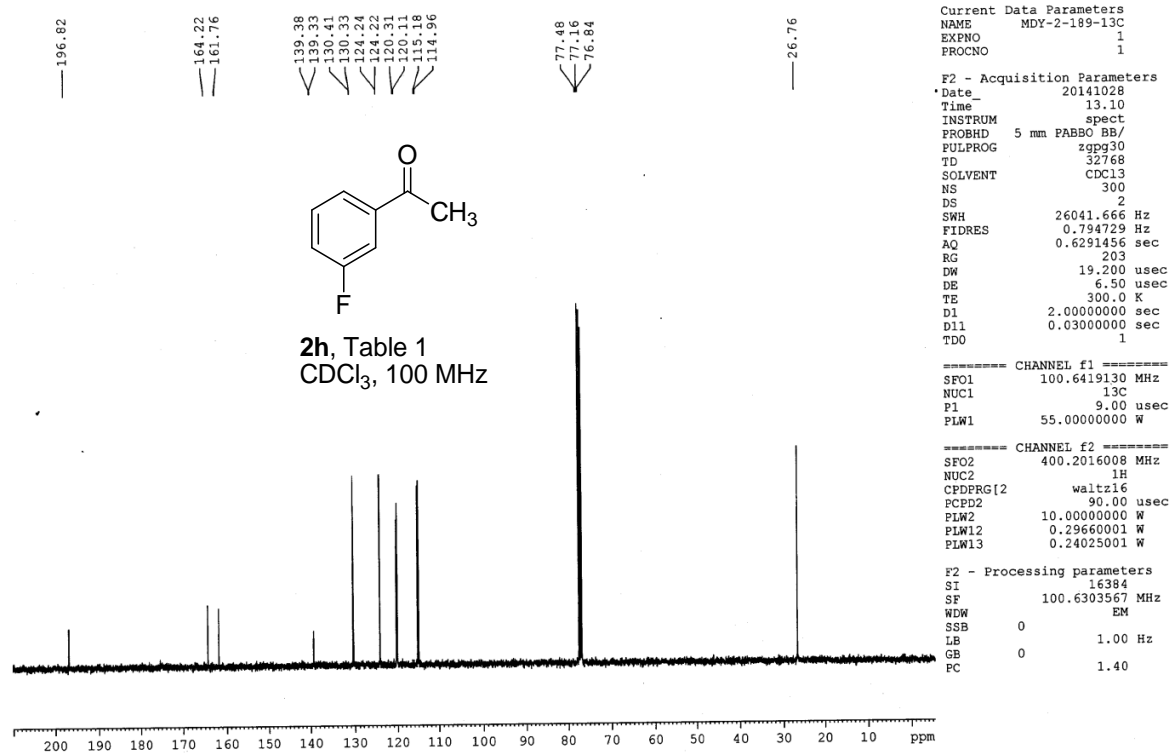
F2 - Processing parameters  
SI 16384  
SF 100.6303534 MHz  
WDW EM  
SSB 0  
LB 1.00 Hz  
GB 0  
PC 1.40



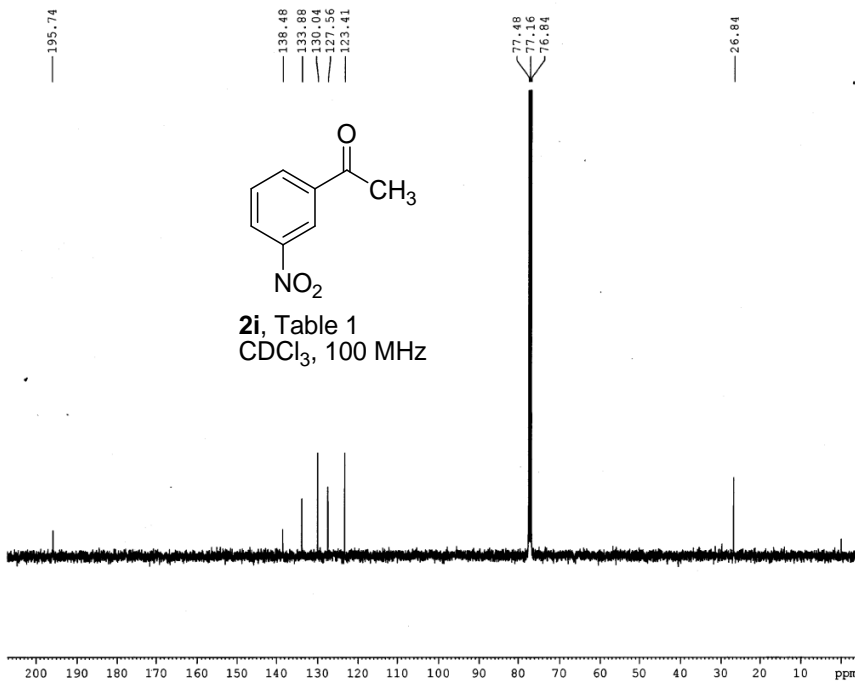
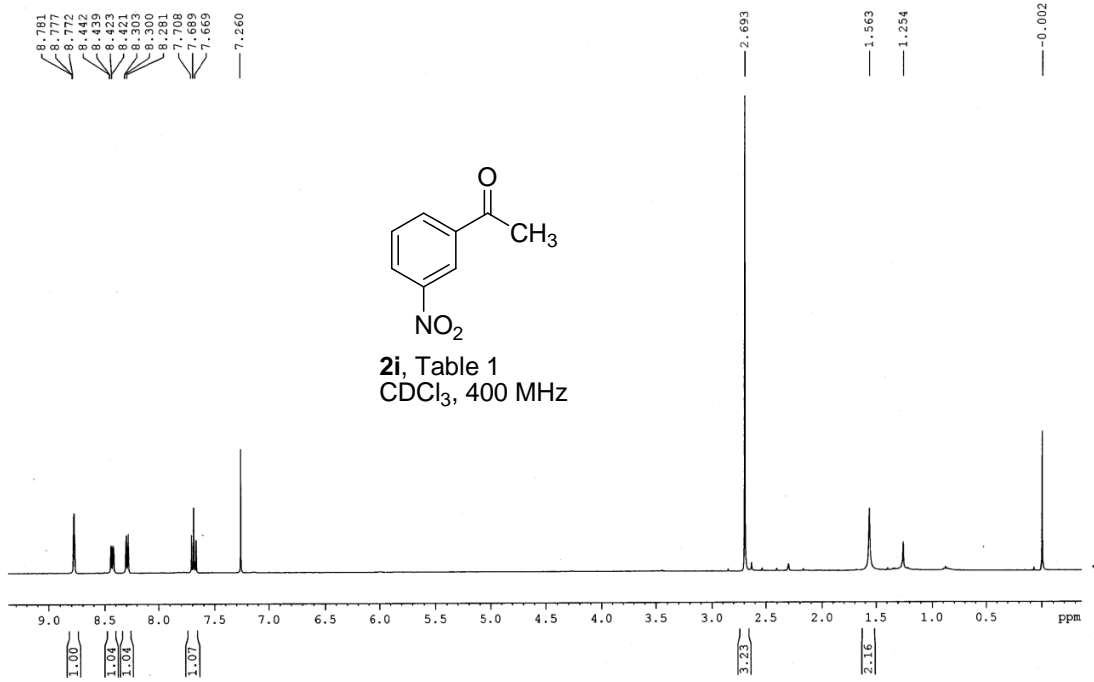
MDY-2-189-1H- 400MHz- (ND)



MDY-2-189-13C (ND)



MDY-2-202-1H- 400MHz- (ND)



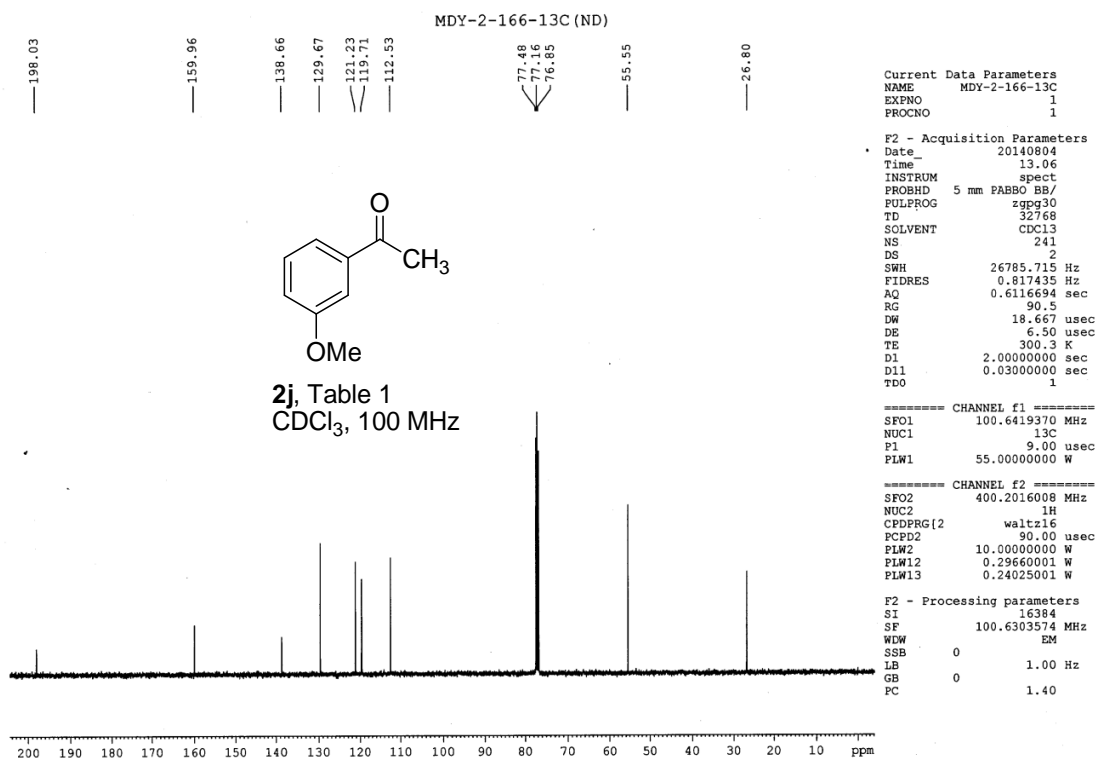
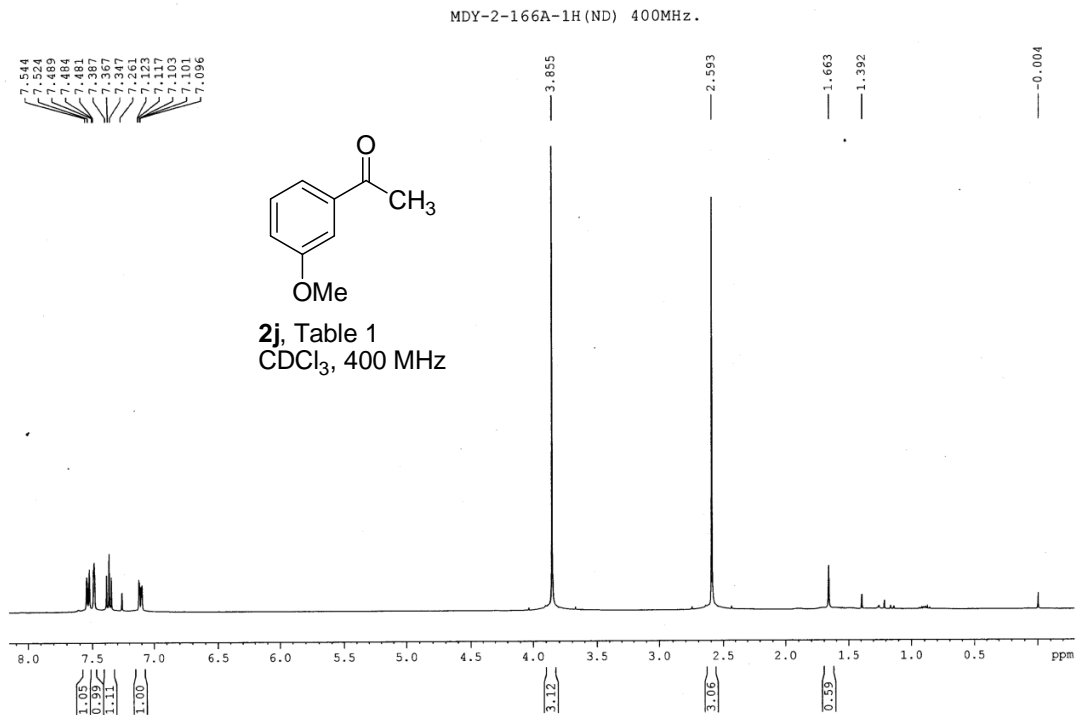
Current Data Parameters  
 NAME MDY-2-202-13C  
 EXPNO 1  
 PROCNO 1

F2 - Acquisition Parameters  
 Date 20141107  
 Time 12.44  
 INSTRUM spect  
 PROBHD 5 mm PABBO BB/  
 PULPROG zgpg30  
 TD 32768  
 SOLVENT CDCl3  
 NS 750  
 DS 2  
 SWH 26041.666 Hz  
 FIDRES 0.794729 Hz  
 AQ 0.6291456 sec  
 RG 203  
 DW 19.200 usec  
 DE 6.50 usec  
 TE 301.8 K  
 D1 2.00000000 sec  
 D11 0.03000000 sec  
 TDO 1

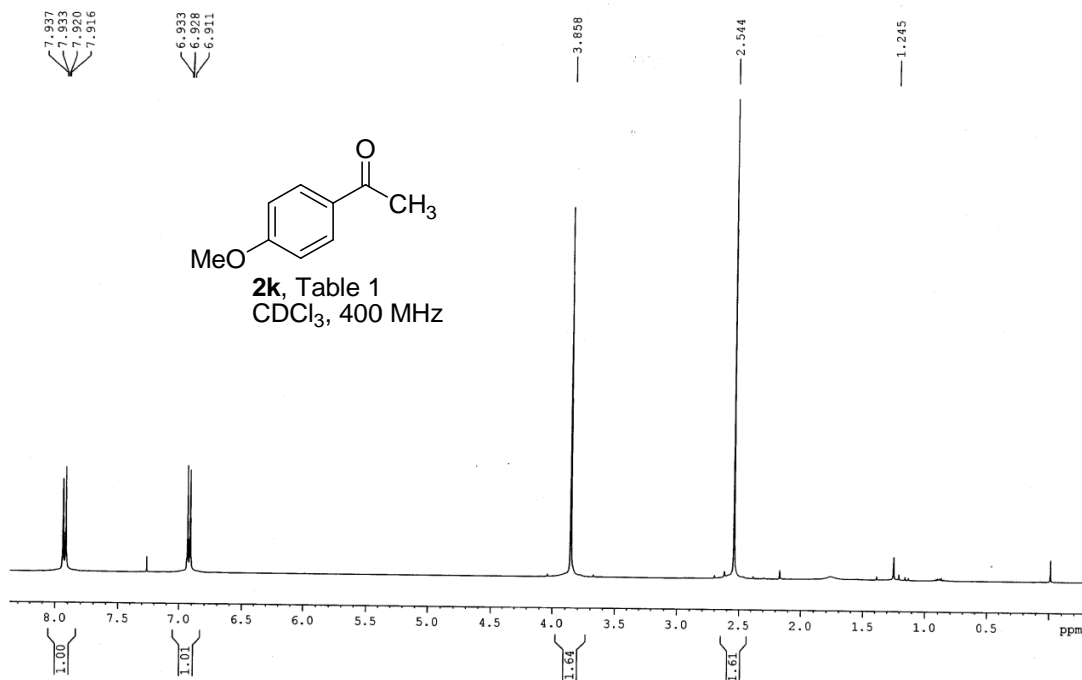
===== CHANNEL f1 =====  
 SFO1 100.6419130 MHz  
 NUC1 13C  
 P1 9.00 usec  
 PLW1 55.00000000 W

===== CHANNEL f2 =====  
 SFO2 400.2016008 MHz  
 NUC2 1H  
 CPDPRG2 waltz16  
 PCPD2 90.00 usec  
 PLW2 10.00000000 W  
 PLW12 0.2960001 W  
 PLW13 0.24025001 W

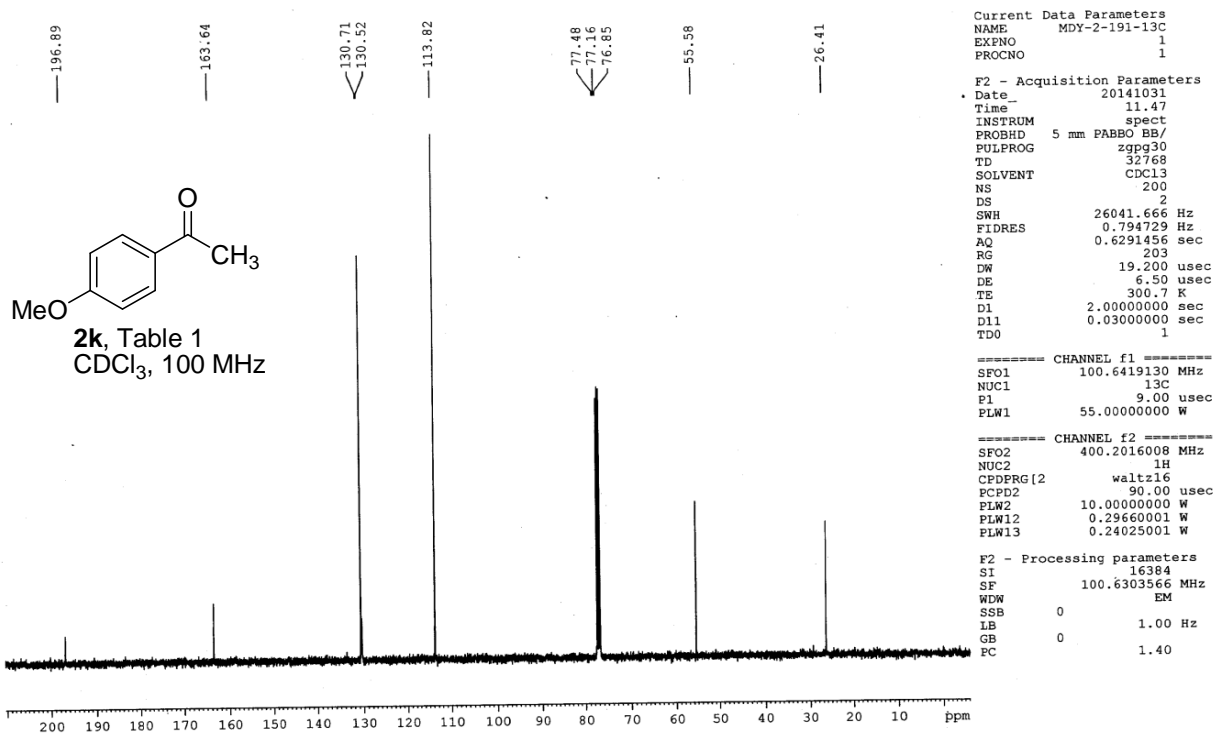
F2 - Processing parameters  
 SI 16384  
 SF 100.6303534 MHz  
 WDW EM  
 SSB 0  
 LB 1.00 Hz  
 GB 0  
 EC 1.40



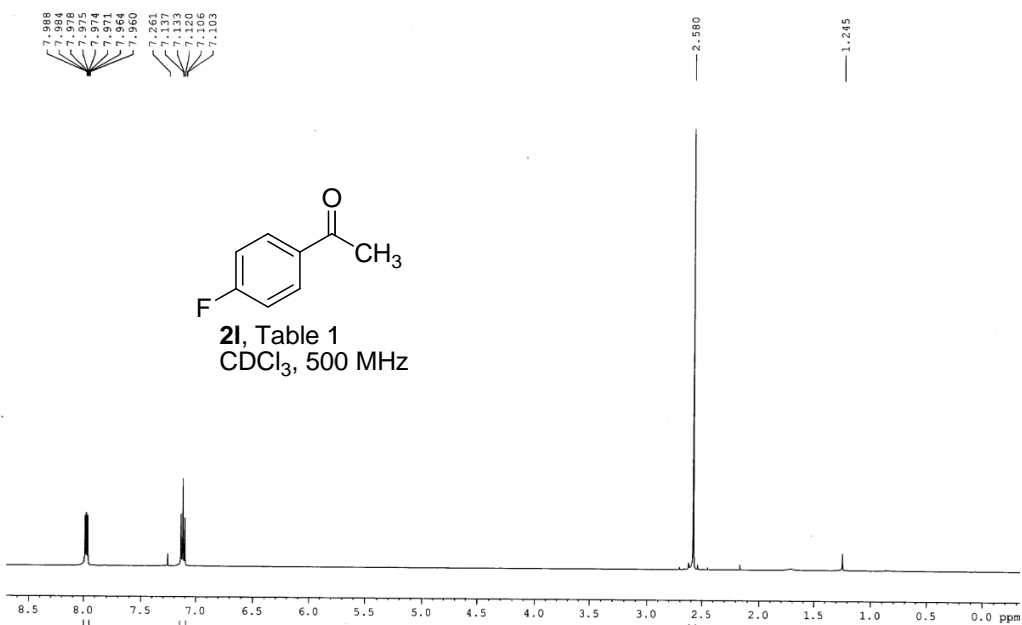
MDY-2-191-1H- 400MHz-(ND)



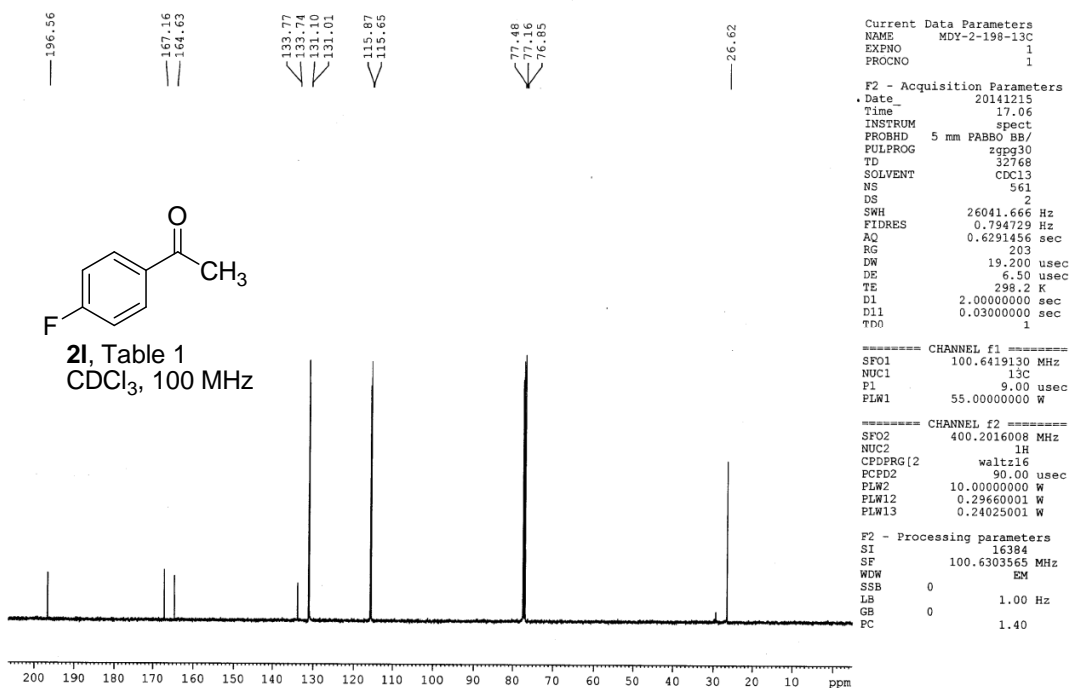
MDY-2-191-13C (ND)



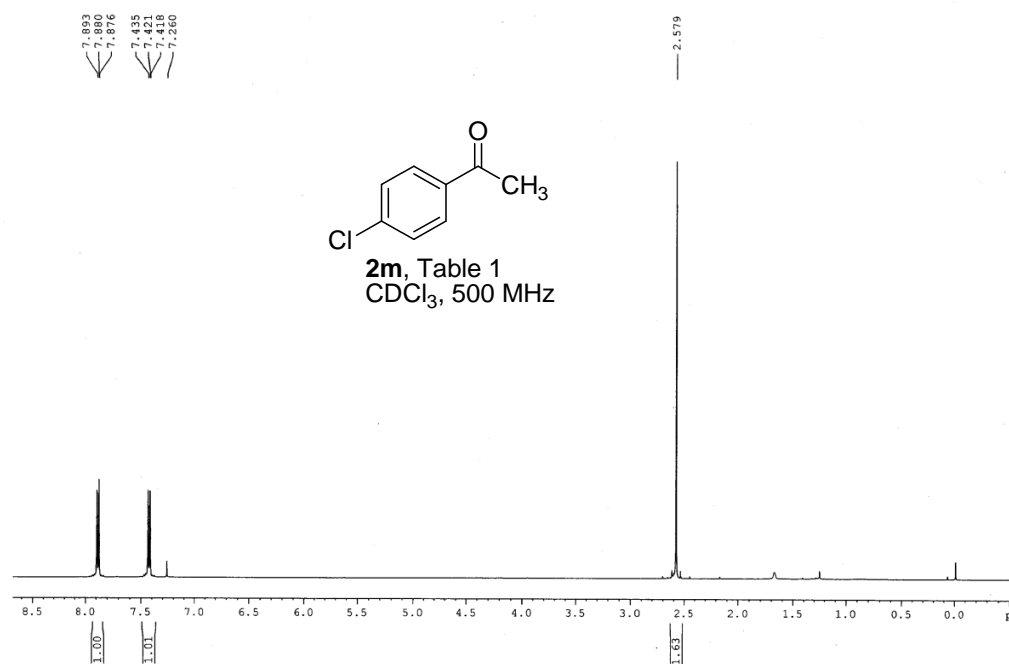
MDY2.198-1H(SKD) 11dec14.6



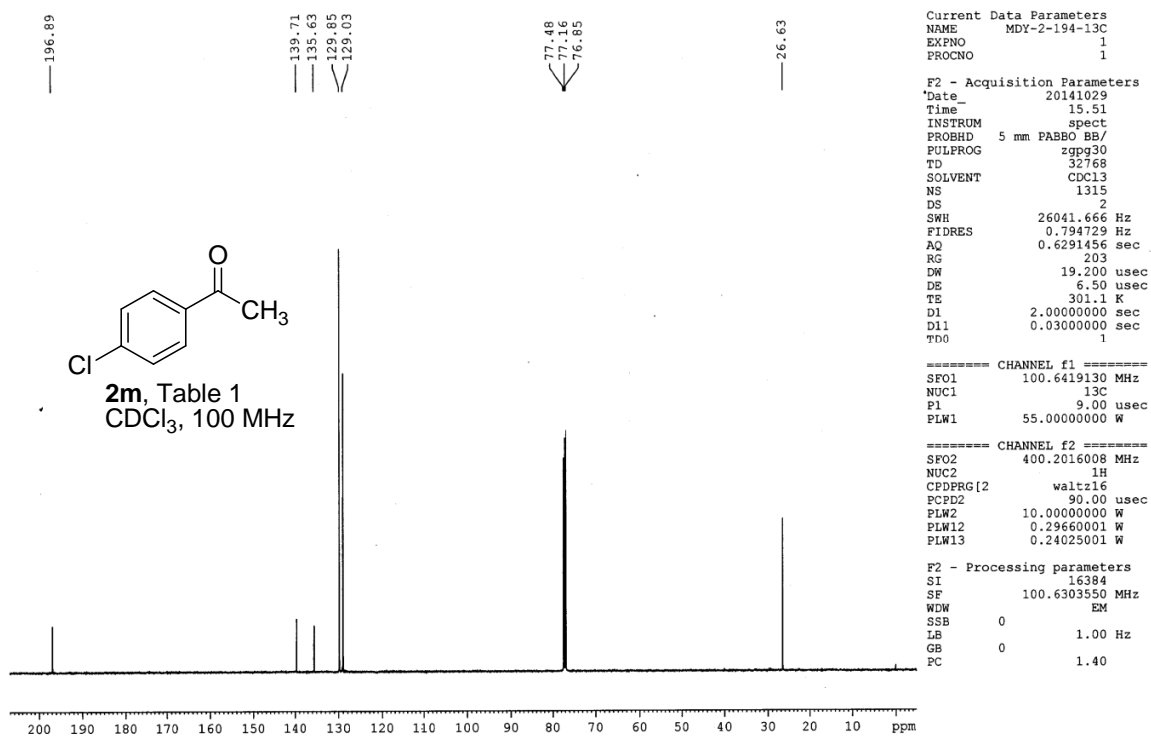
MDY-2-198-13C (ND)



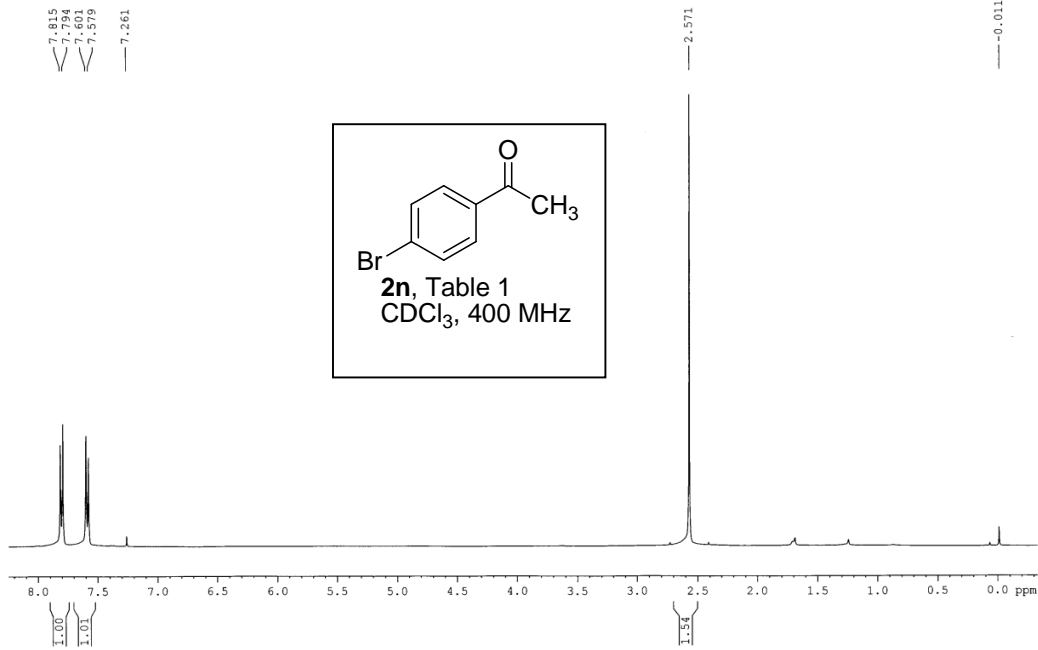
MDY2.194-1H(SKD) 29oct14.10



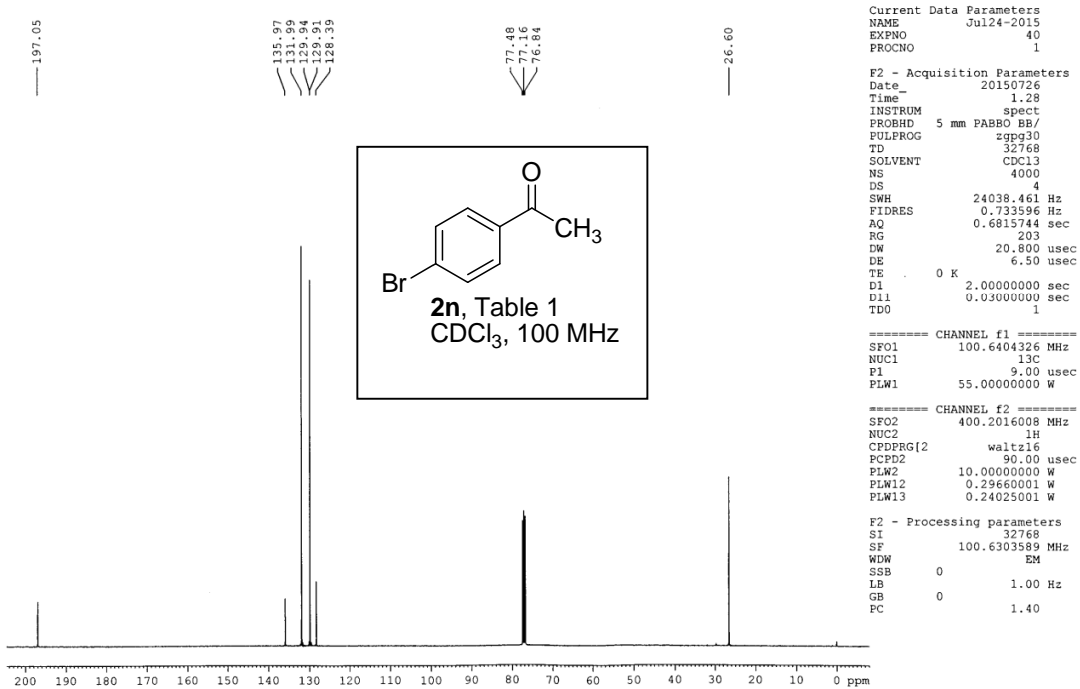
MDY-2-194-13C (ND)



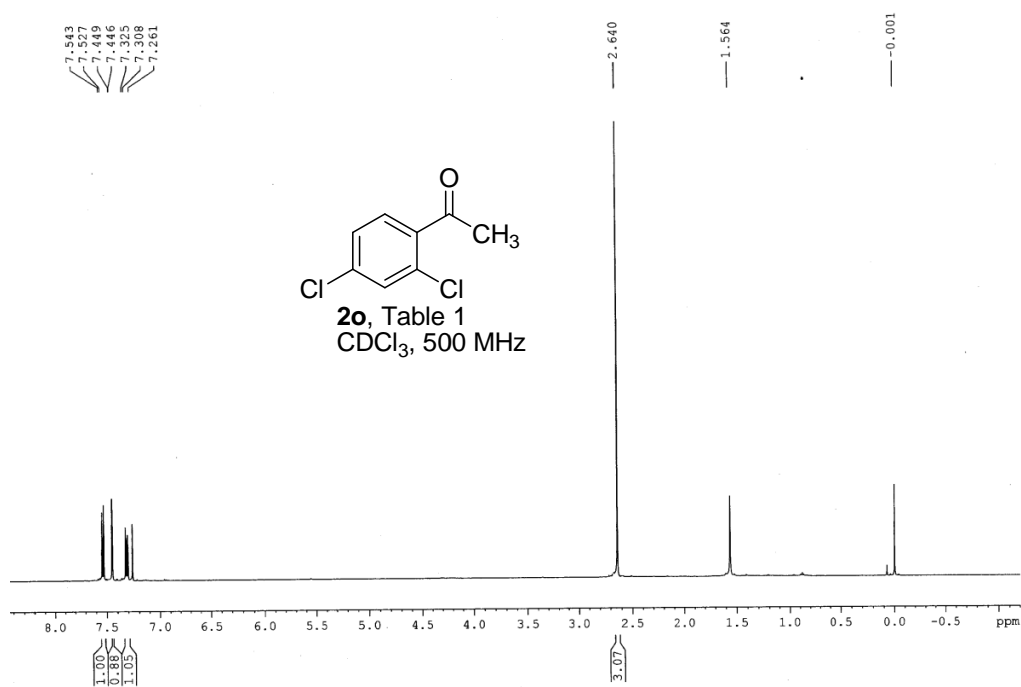
MDY-2-285-1H- (ND) 400MHz.



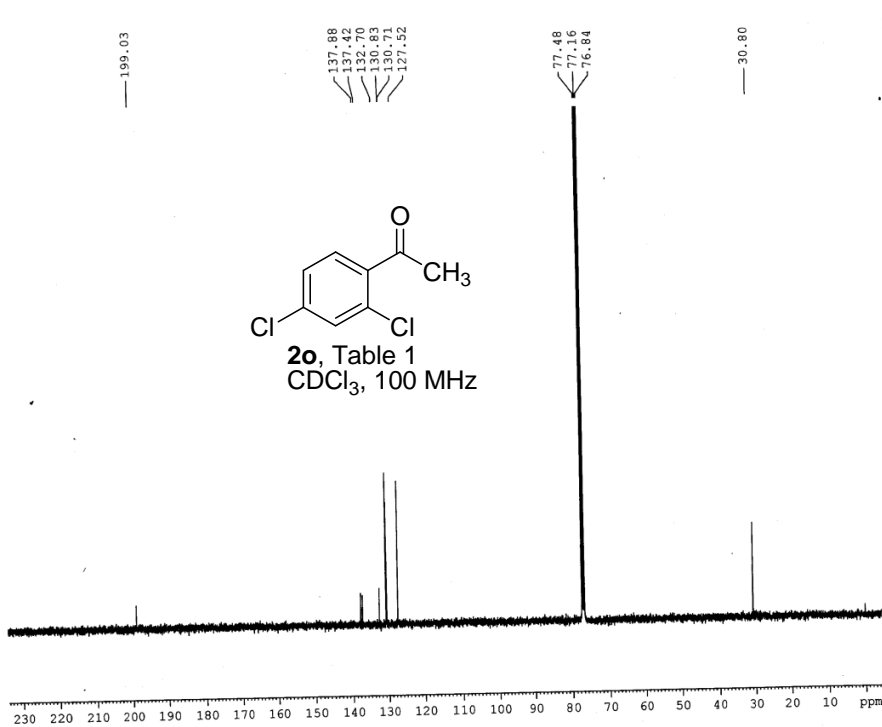
MDY-2-285-13C-24jul15-40- (SR)



MDY-2-196-1H(SR) 500MHz.



MDY-2-196-13C (ND)



Current Data Parameters  
NAME MDY-2-196-13C  
EXPNO 1  
PROCNO 1

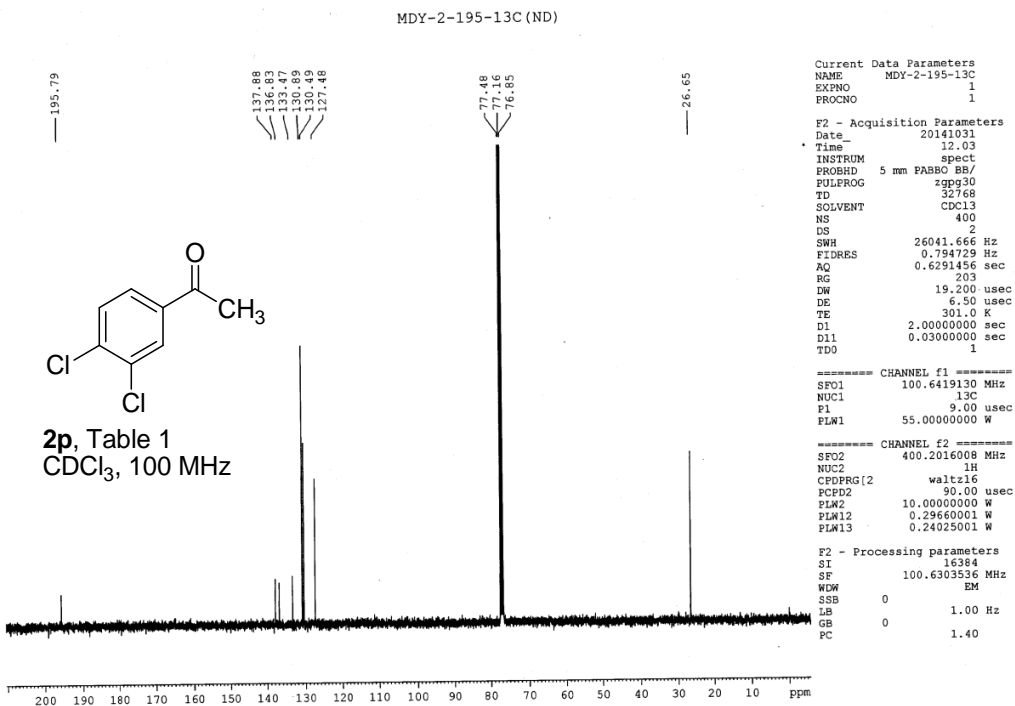
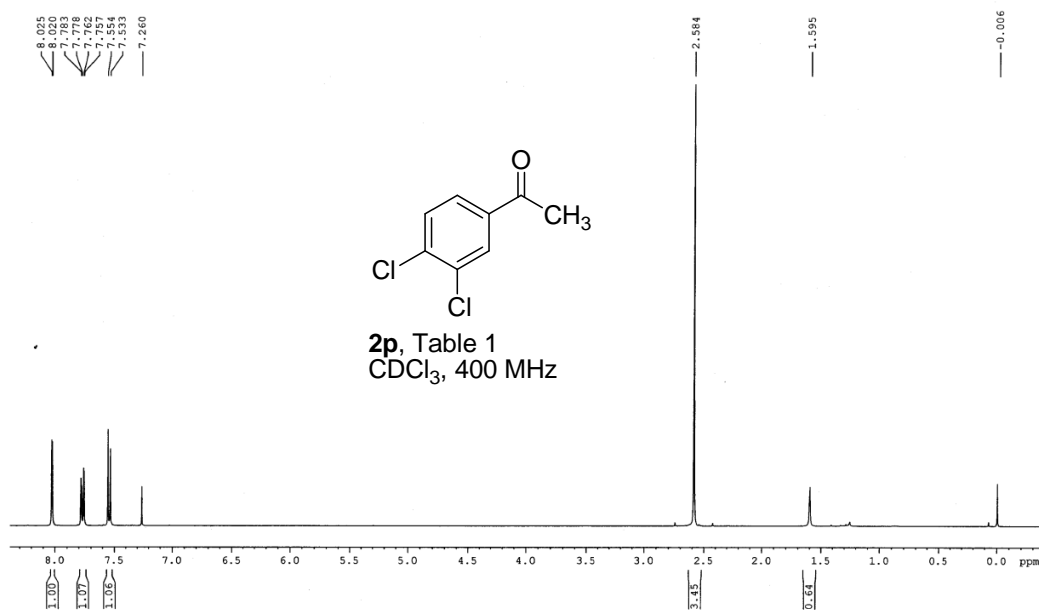
F2 - Acquisition Parameters  
.Date\_ 20141105  
Time 14.17  
INSTRUM spect  
PROBHD 5 mm PABBO BB/  
PULPROG zgpg30  
TD 32768  
SOLVENT CDCl3  
NS 900  
DS 2  
SWH 26041.666 Hz  
FIDRES 0.794729 Hz  
AQ 0.6291456 sec  
RG 203  
DW 19.200 usec  
DE 6.50 usec  
TE 302.3 K  
D1 2.0000000 sec  
D11 0.0300000 sec  
TD0 1

===== CHANNEL f1 =====  
SFO1 100.6419130 MHz  
NUC1 13C  
P1 9.00 usec  
PLW1 55.00000000 W

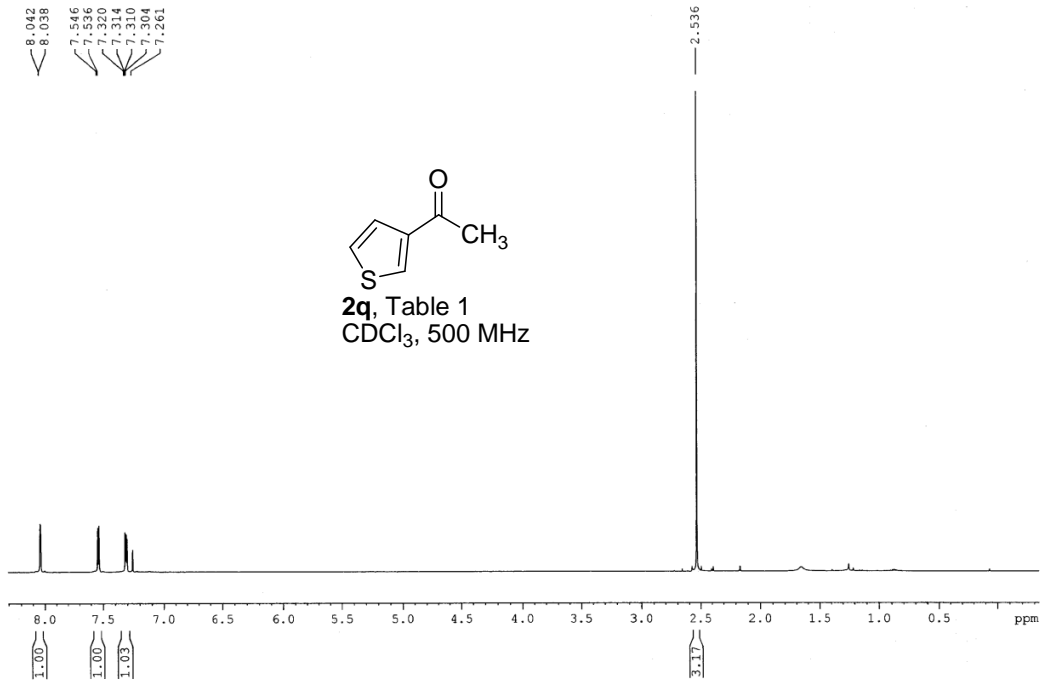
===== CHANNEL f2 =====  
SFO2 400.2016008 MHz  
NUC2 1H  
CPDPRG2 waltz16  
PCPD2 90.00 usec  
PLW2 10.00000000 W  
PLW12 0.29660001 W  
PLW13 0.24025001 W

F2 - Processing parameters  
SI 16384  
SF 100.6303534 MHz  
WDW EM  
SSB 0  
LB 1.00 Hz  
GB 0  
PC 1.40

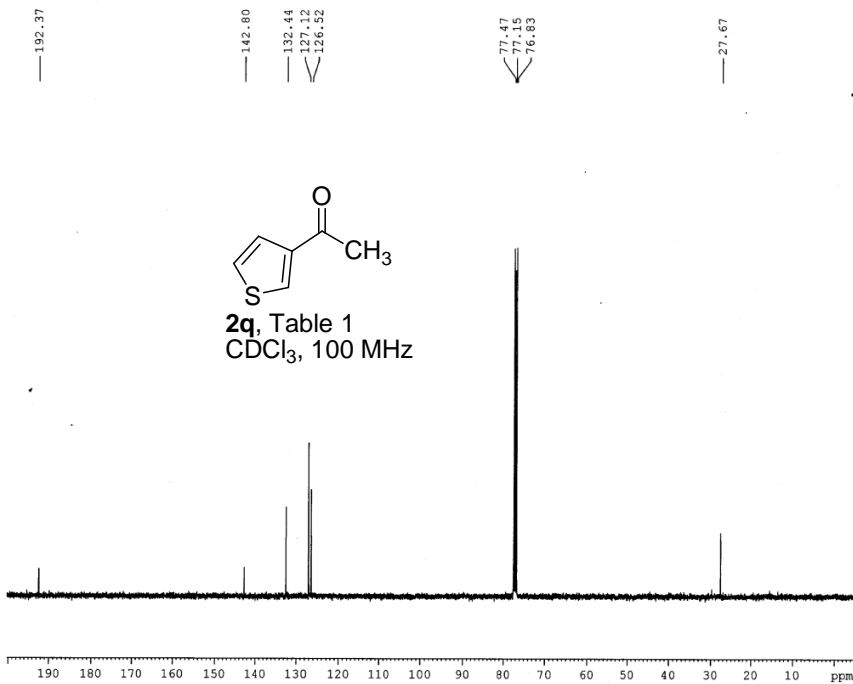




MDY-2-214-1H- (ND) - 500MHz.



MDY-2-214-13C (ND)



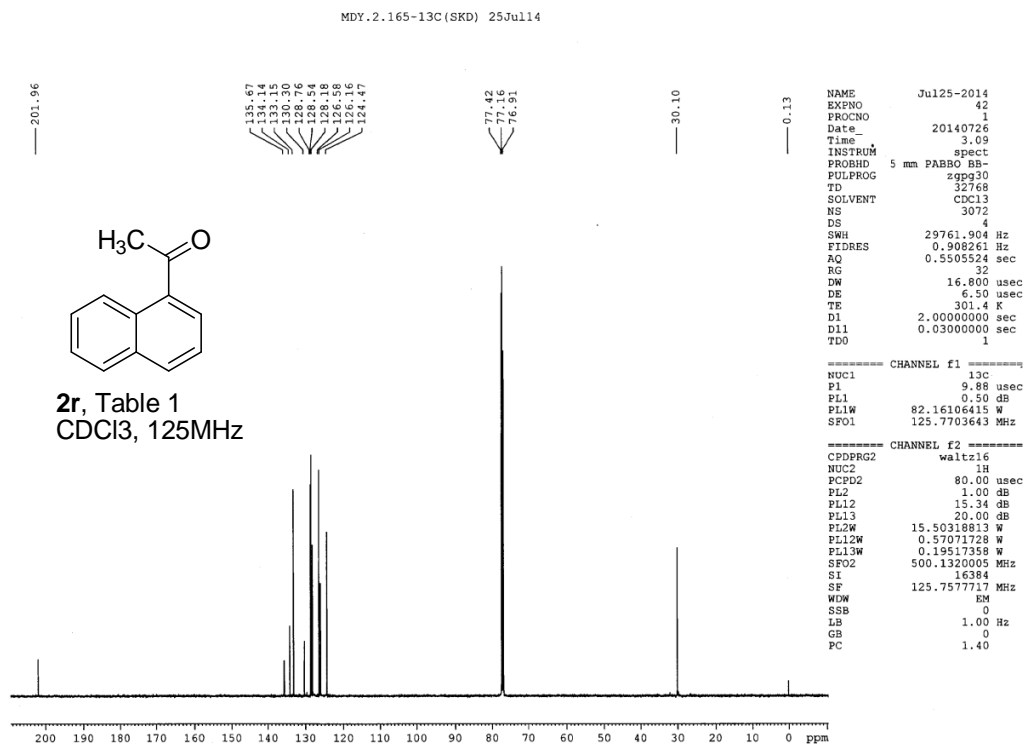
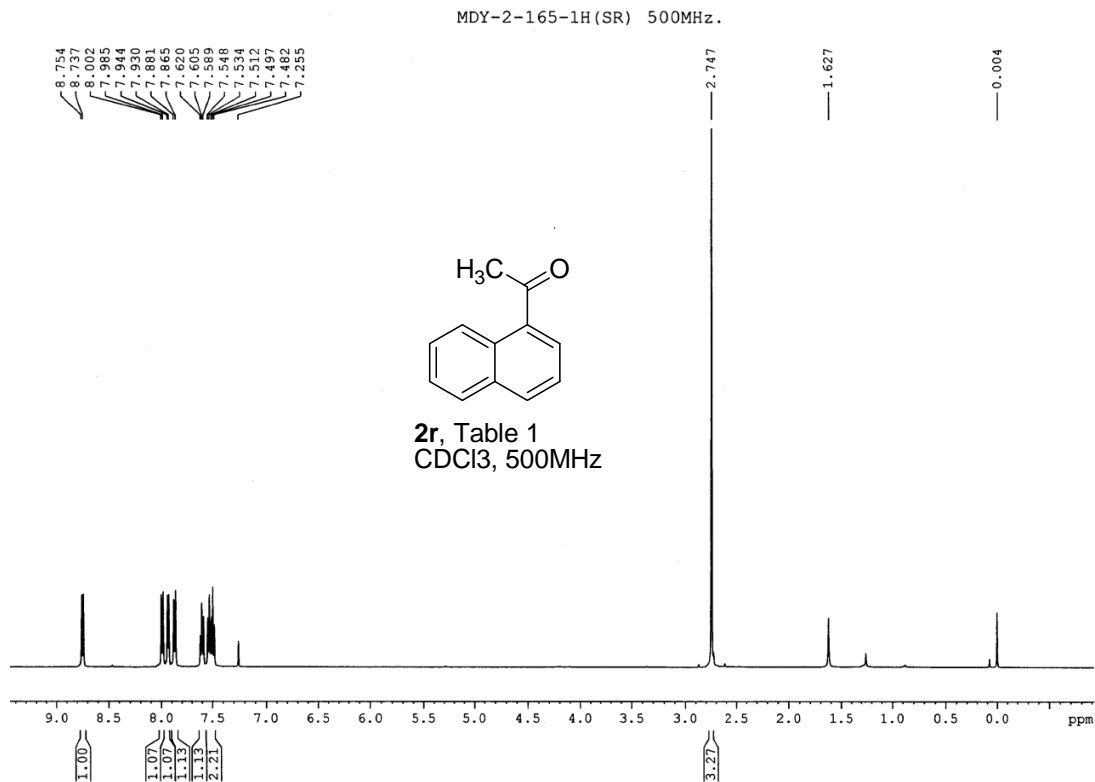
Current Data Parameters  
NAME MDY-2-214-13C  
EXPNO 1  
PROCNO 1

F2 - Acquisition Parameters  
Date\_ 20141211  
Time 13.02  
INSTRUM spect  
PROBHD 5 mm PABBO BB/  
PULPROG zgpg30  
TD 32768  
SOLVENT CDCl3  
NS 408  
DS 2  
SWH 26041.666 Hz  
FIDRES 0.794729 Hz  
AQ 0.6291456 sec  
RG 203  
DW 19.200 usec  
DE 6.50 usec  
TE 298.5 K  
D1 2.0000000 sec  
D11 0.0300000 sec  
TDO 1

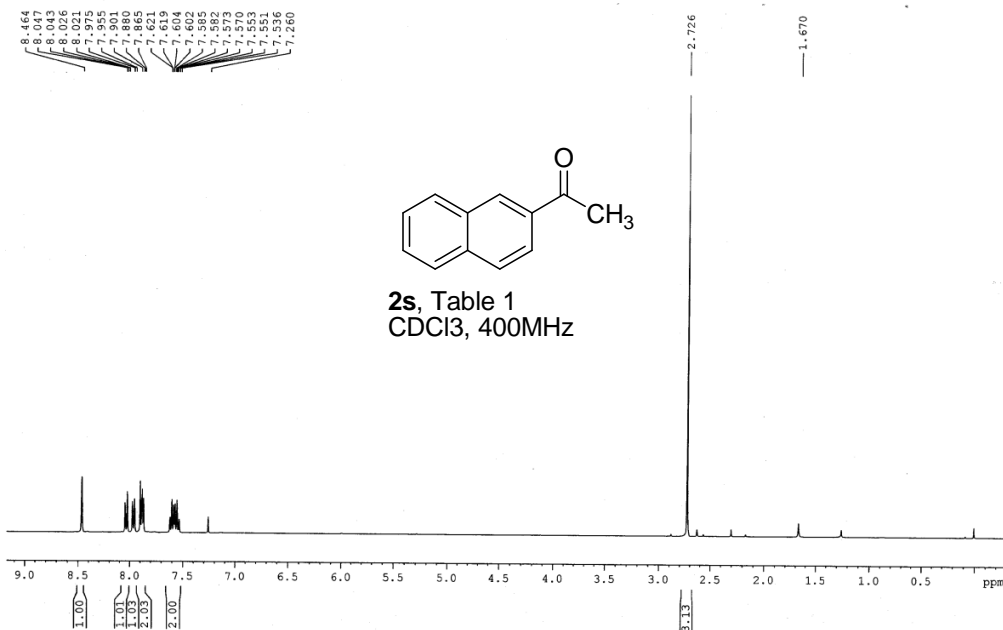
===== CHANNEL f1 =====  
SF01 100.6419130 MHz  
NUC1 13C  
P1 9.00 usec  
PLW1 55.0000000 W

===== CHANNEL f2 =====  
SF02 400.2016008 MHz  
NUC2 1H  
CPDPRG12 waltz16  
PCPD2 90.00 usec  
PLW2 10.0000000 W  
PLW12 0.29660001 W  
PLW13 0.24025001 W

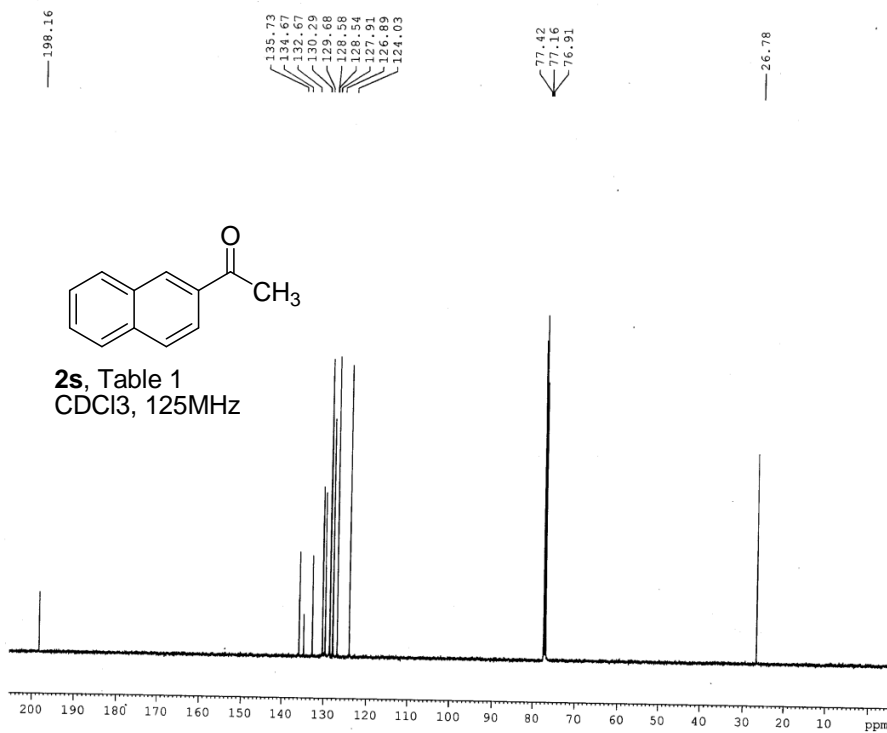
F2 - Processing parameters  
SI 16384  
SF 100.6303566 MHz  
WDW EM  
SSB 0  
LB 1.00 Hz  
GB 0  
PC 1.40



MDY-2-204-1H (ND) 400MHz.



MDY-2-204-13C-0512-(ND)



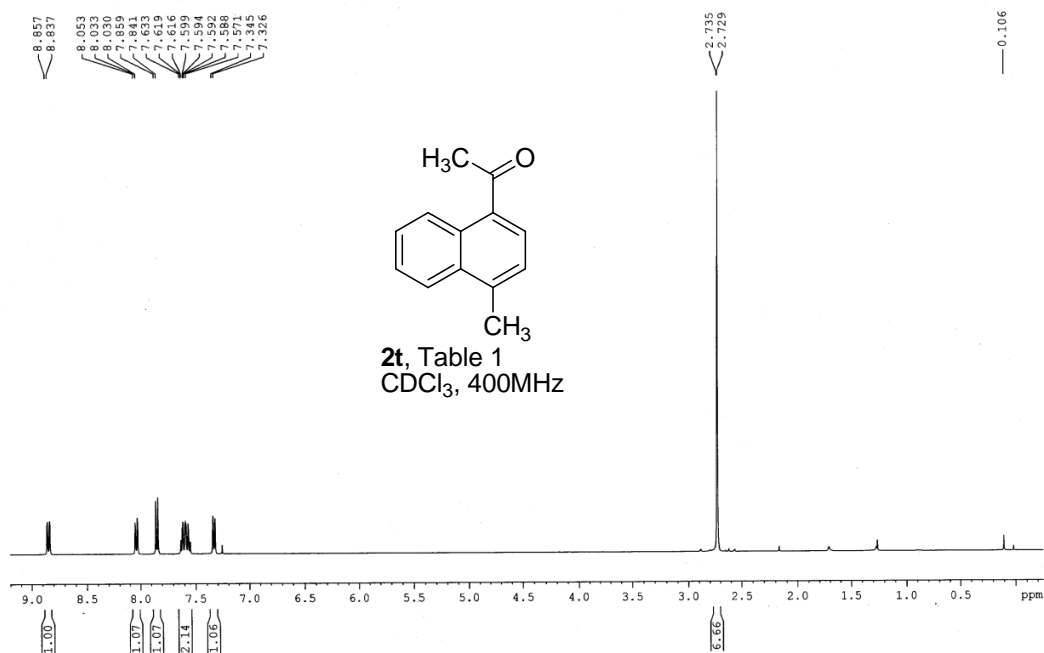
```

NAME      Dec05-2014
EXPNO     11
PROCNO    1
Date_     20141206
Time      17.26
INSTRUM   spect
PROBHD    5 mm PABBO BB-
PULPROG   zgpg30
TD         32768
SOLVENT   CDCl3
NS         1000
DS         4
SWH        29761.904 Hz
FIDRES     0.908261 Hz
AQ         0.5505524 sec
RG         32
DW         16.800 usec
DE         6.50 usec
TE         300.9 K
D1         2.0000000 sec
D11        0.0300000 sec
TDO        1

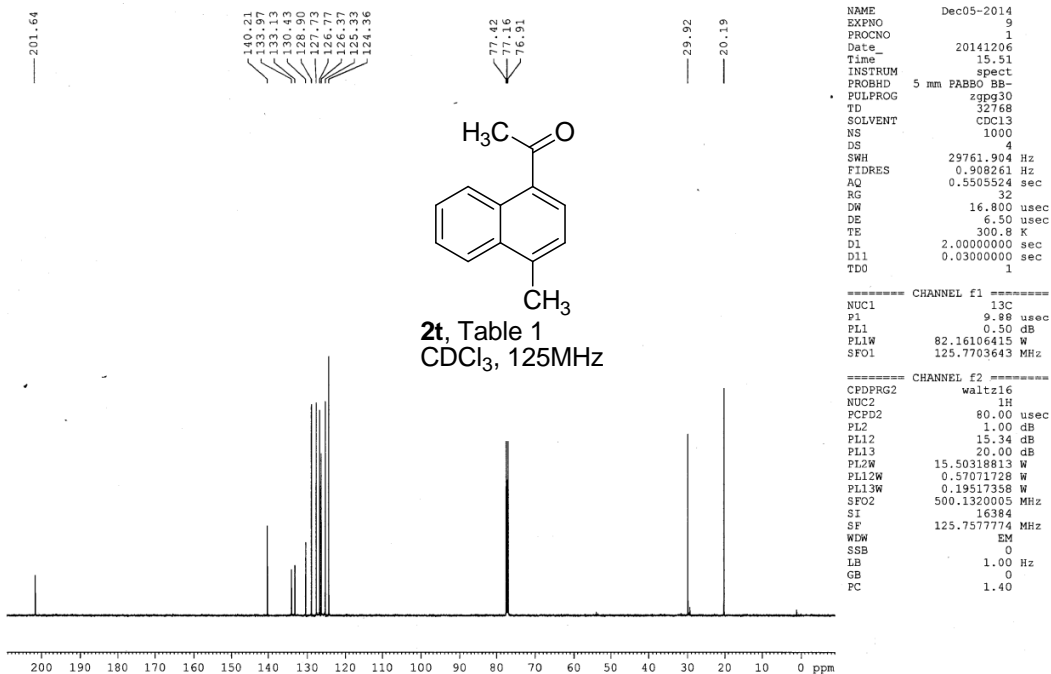
===== CHANNEL f1 =====
NUC1       13C
P1         9.88 usec
PL1        0.50 dB
PL1W       82.16106415 W
SFO1       125.7703643 MHz

===== CHANNEL f2 =====
CPDPRG2   waltz16
NUC2       1H
PCPD2     80.00 usec
PL2        1.00 dB
PL12       15.34 dB
PL13       20.00 dB
PL2W       15.50318813 W
PL12W      0.57071728 W
PL13W      0.19517358 W
SFO2       500.1320005 MHz
SI         16384
SF         125.7577734 MHz
WDW        EM
SSB        0
LB         1.00 Hz
GB         0
PC         1.40
    
```

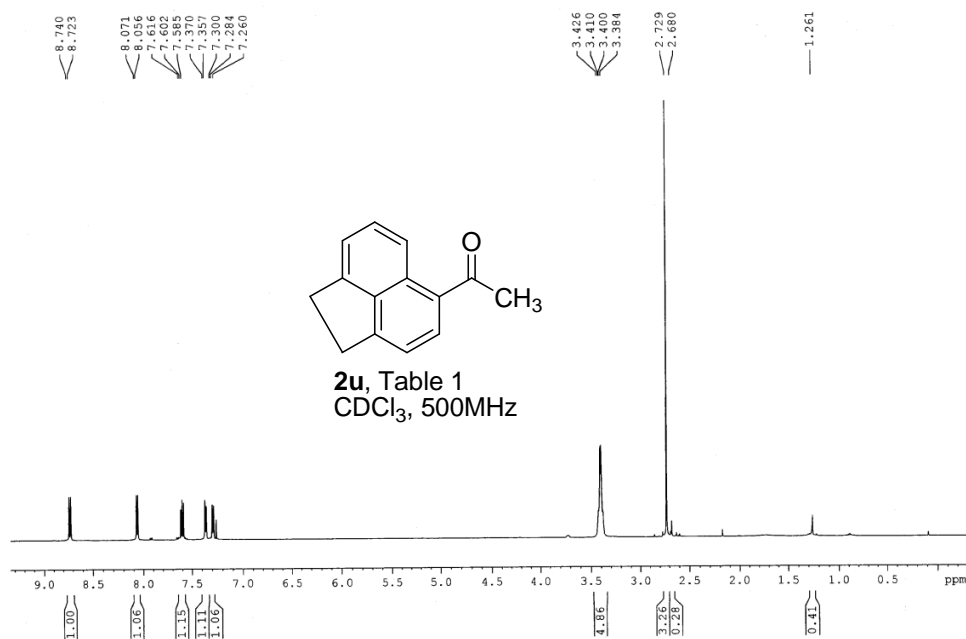
MDY-2-206-1H (ND) 400MHz.



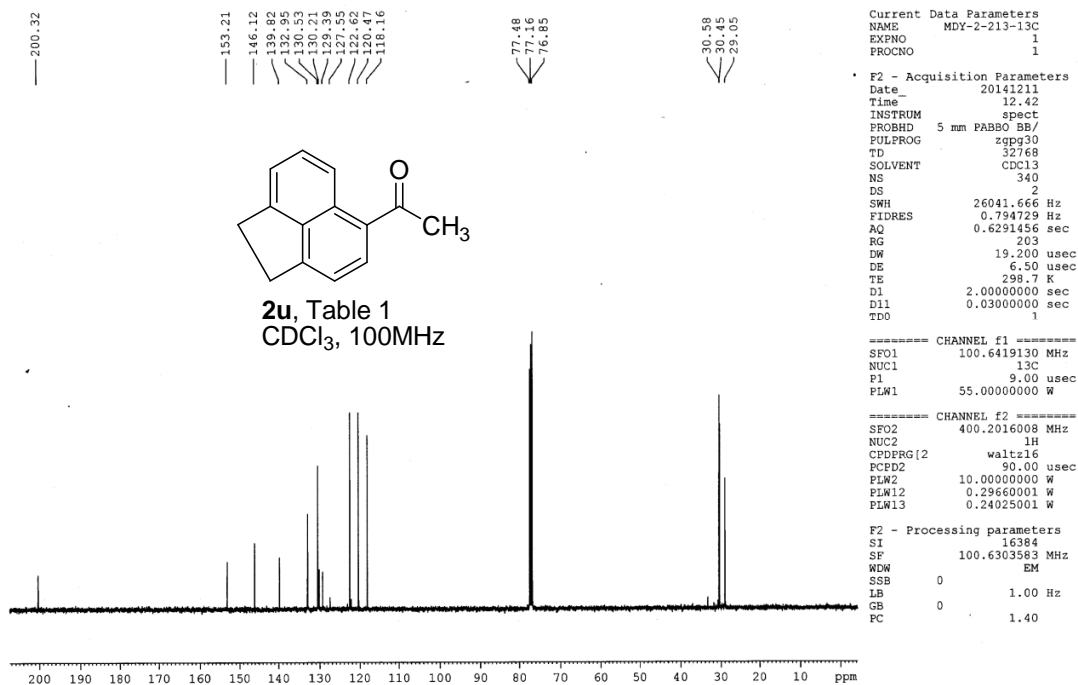
MDY-2-206-3C-0512- (ND)



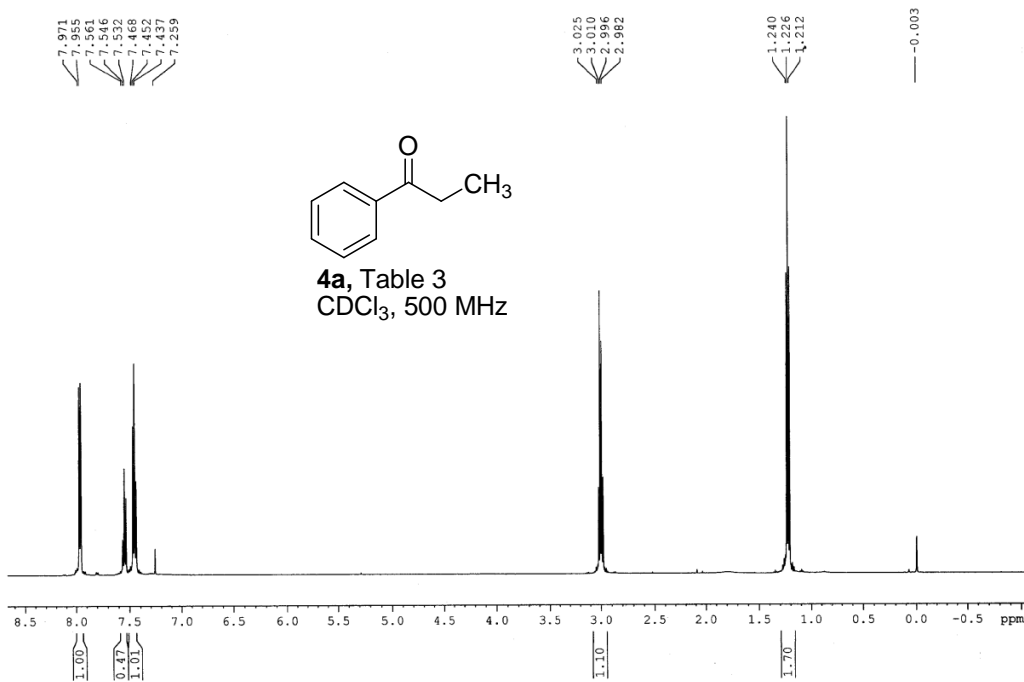
MDY-2-213-1H-(ND) - 500MHz.



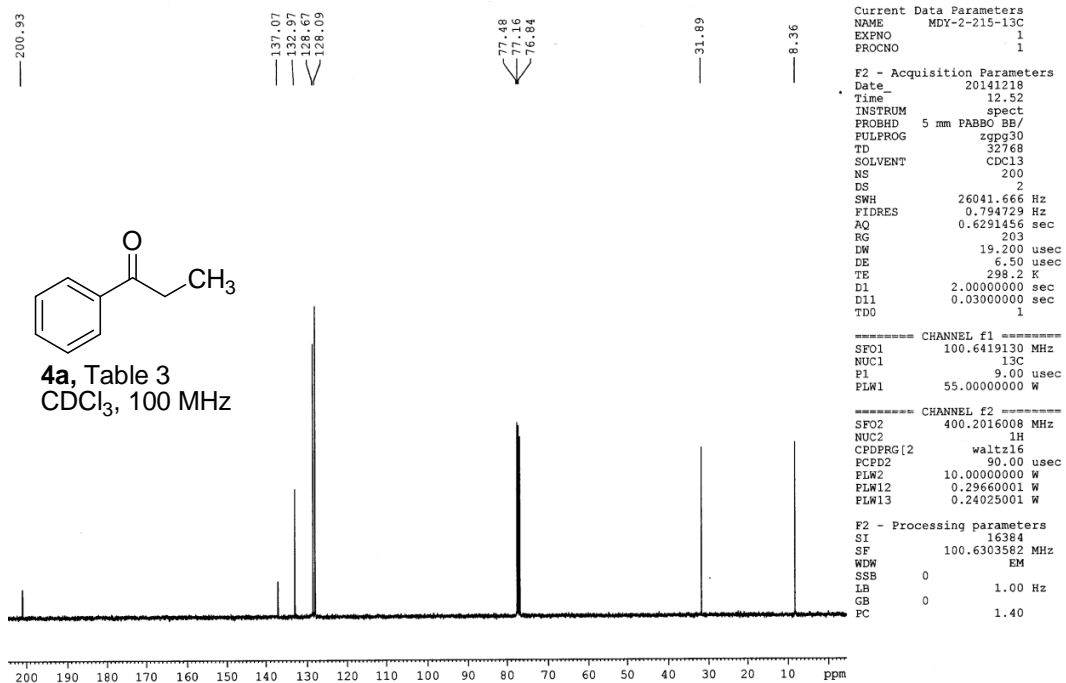
MDY-2-213-13C (ND)



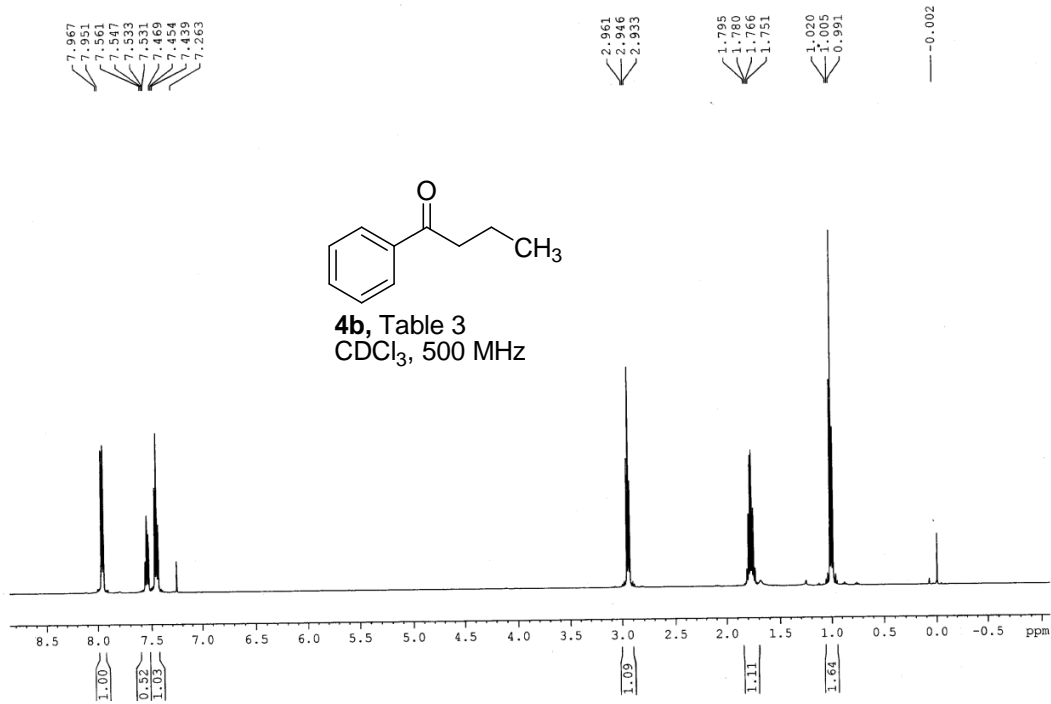
MDY-2-215-1H(SR) 500MHz.



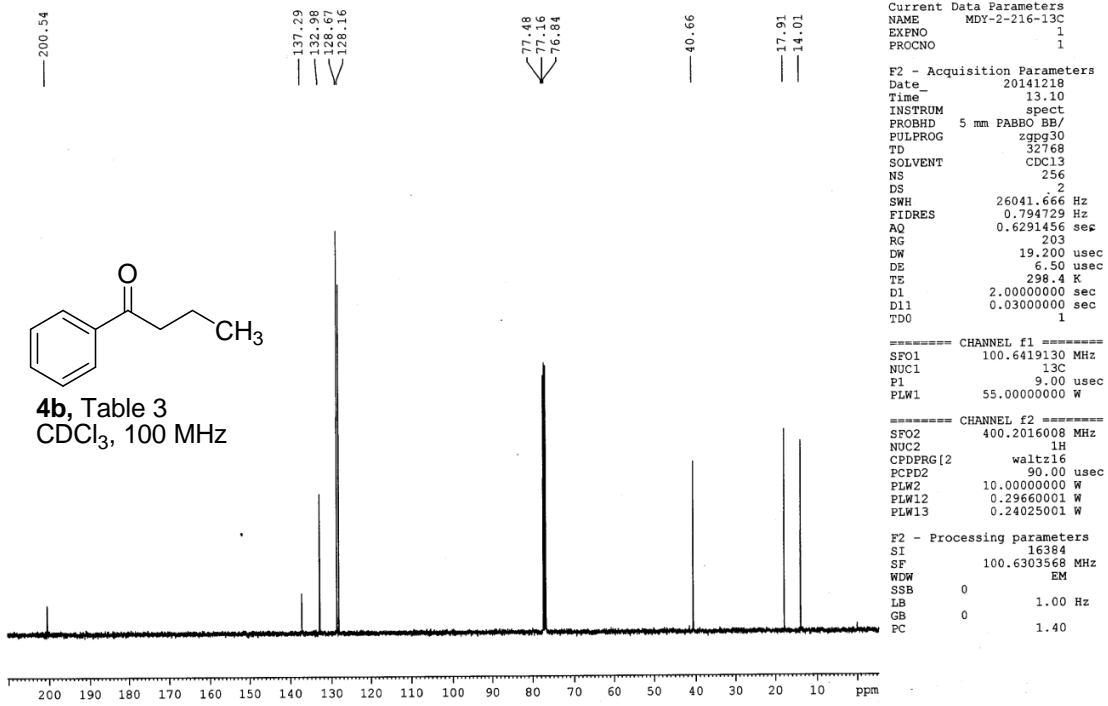
MDY-2-215-13C(ND)



MDY-2-216-1H (SR) 500MHz.

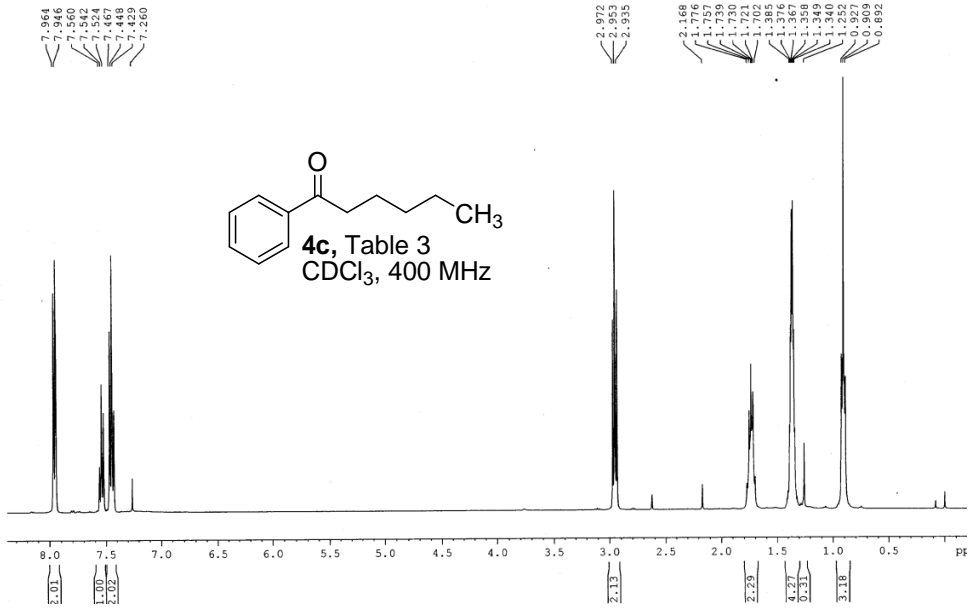


MDY-2-216-13C (ND)

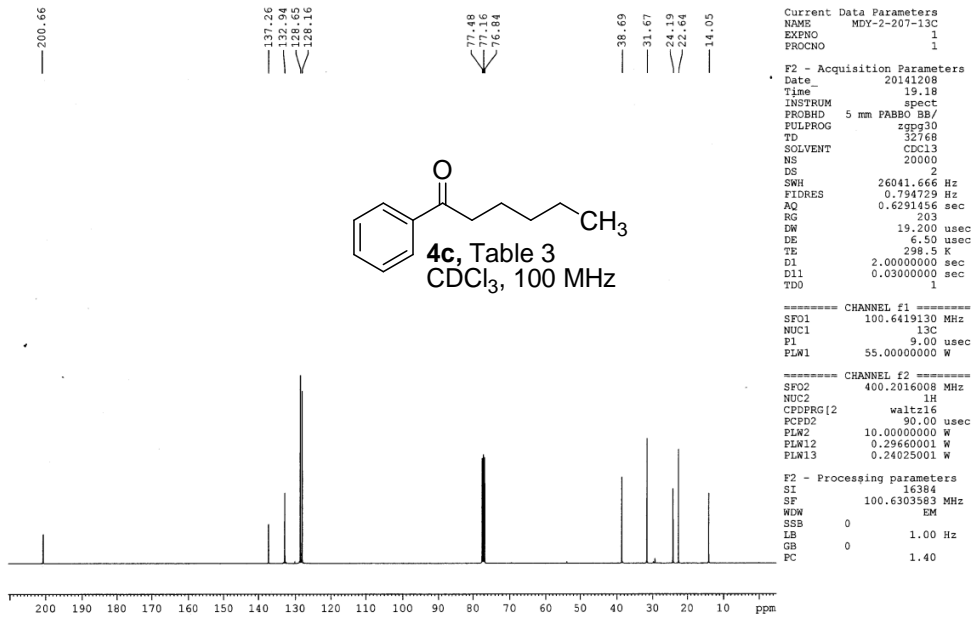




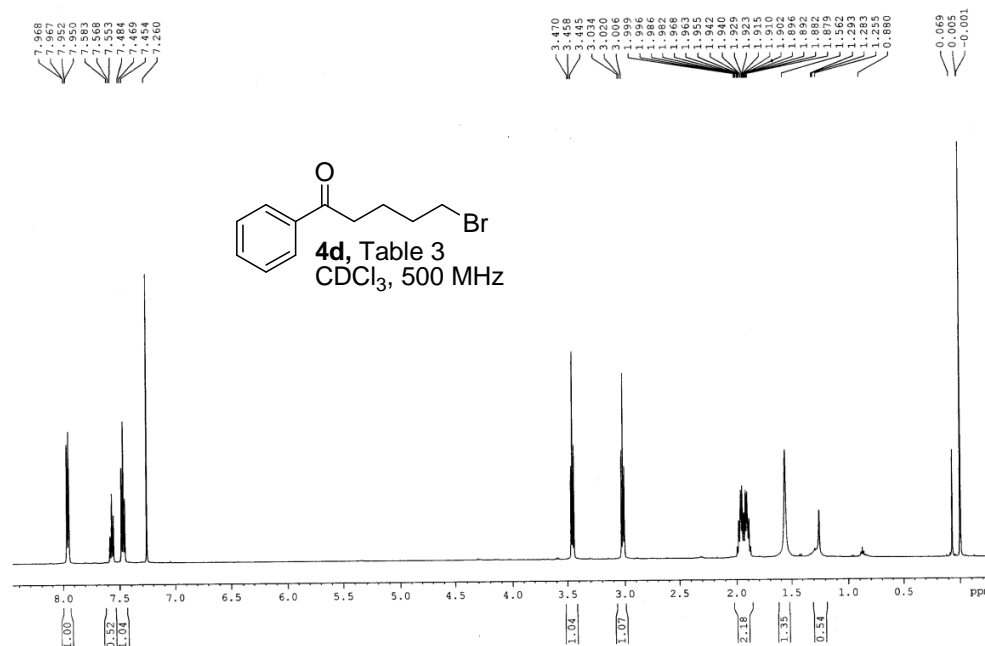
MDY-2-207-1H (ND) 400MHz.



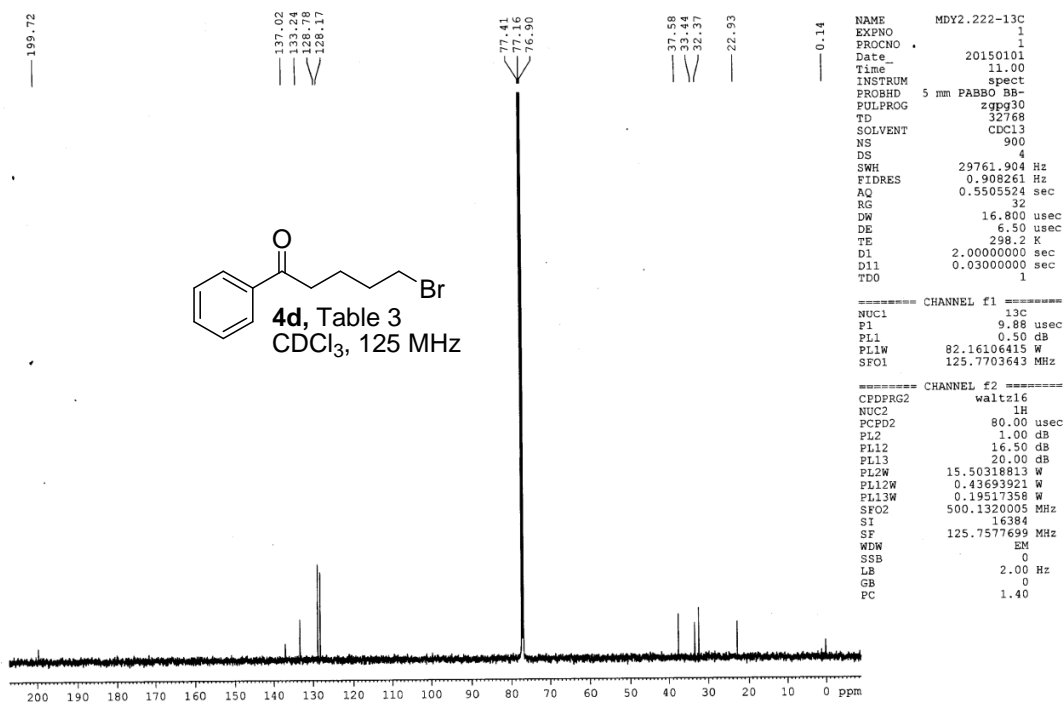
MDY-2-207-13C (SR)



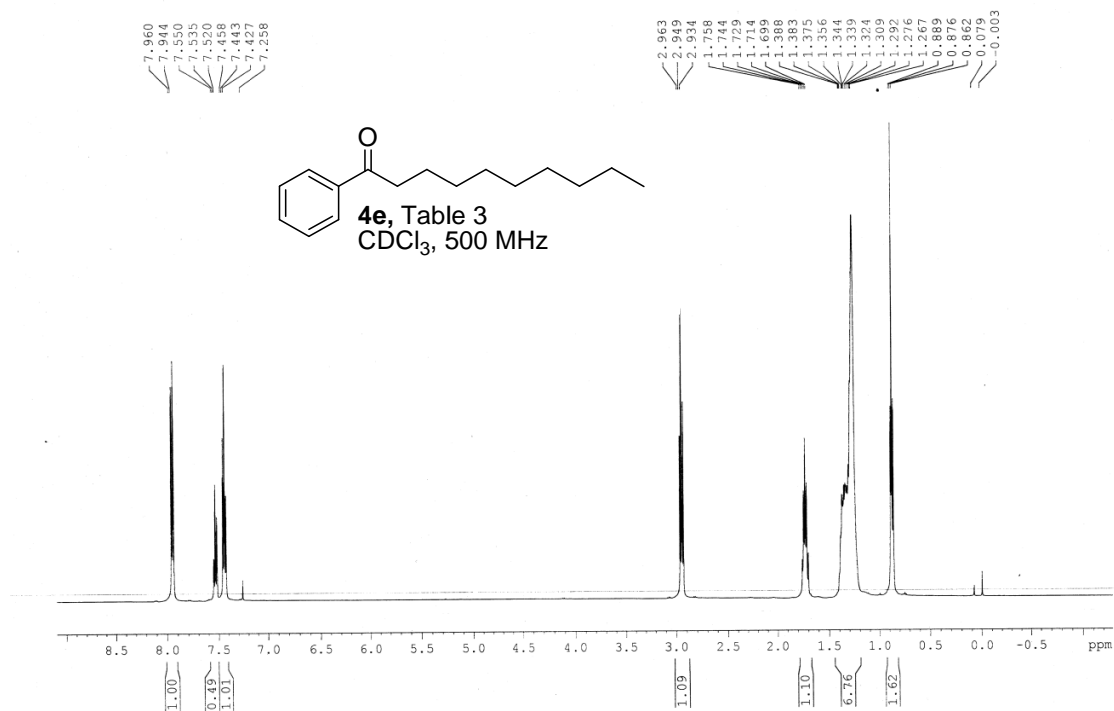
MDY2.222-1H (SKD) 31dec14.6



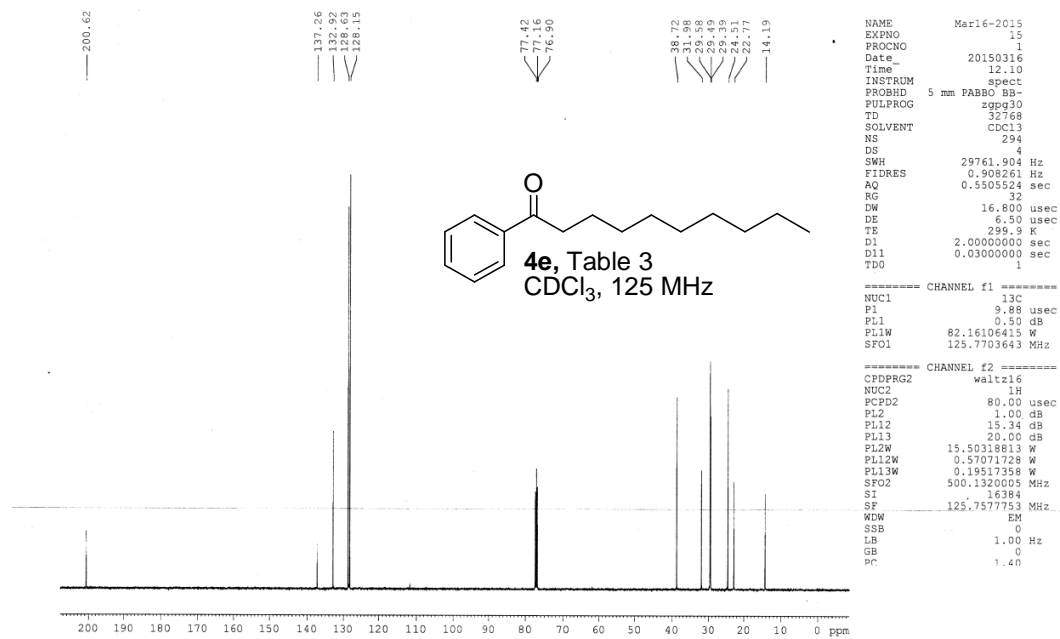
MDY2.222-13C (SKD)



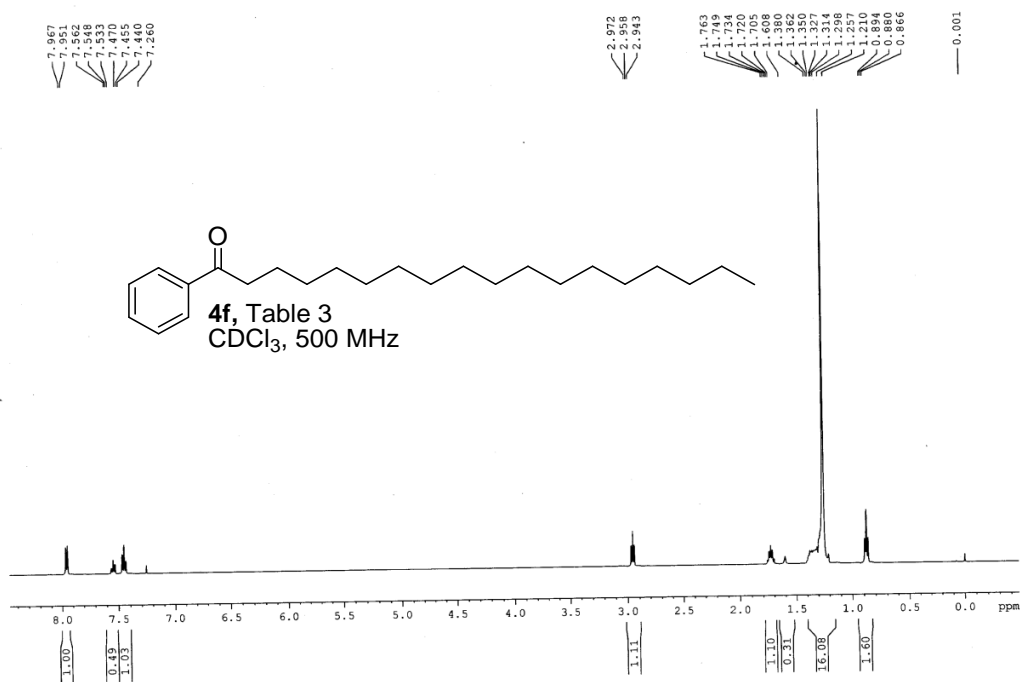
MDY-2-251-1H (SR) 500MHz.



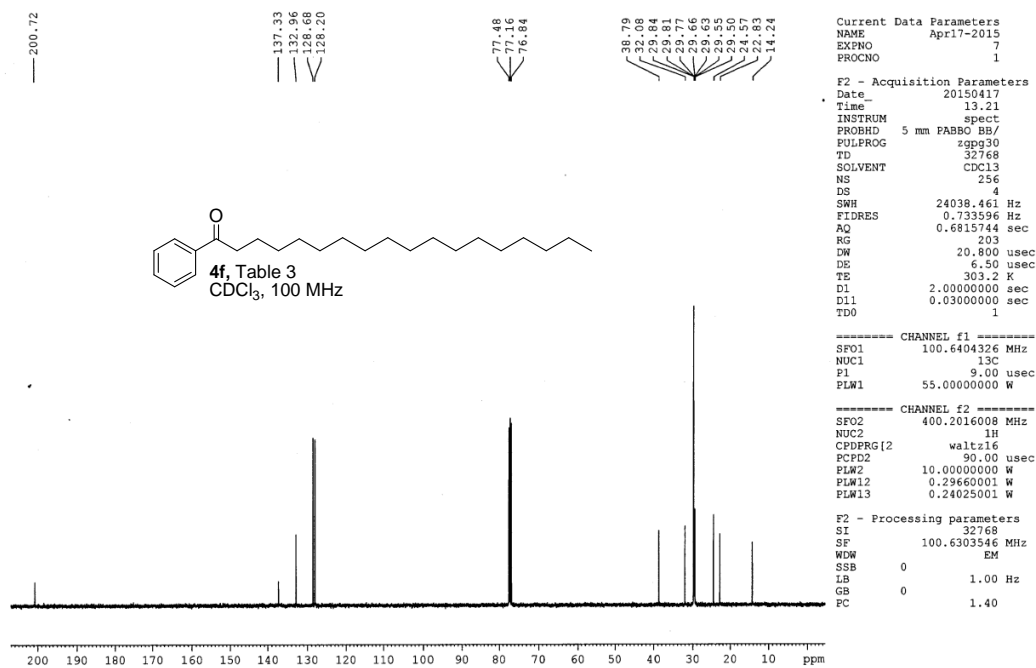
MDY2.251-13C (SKD)



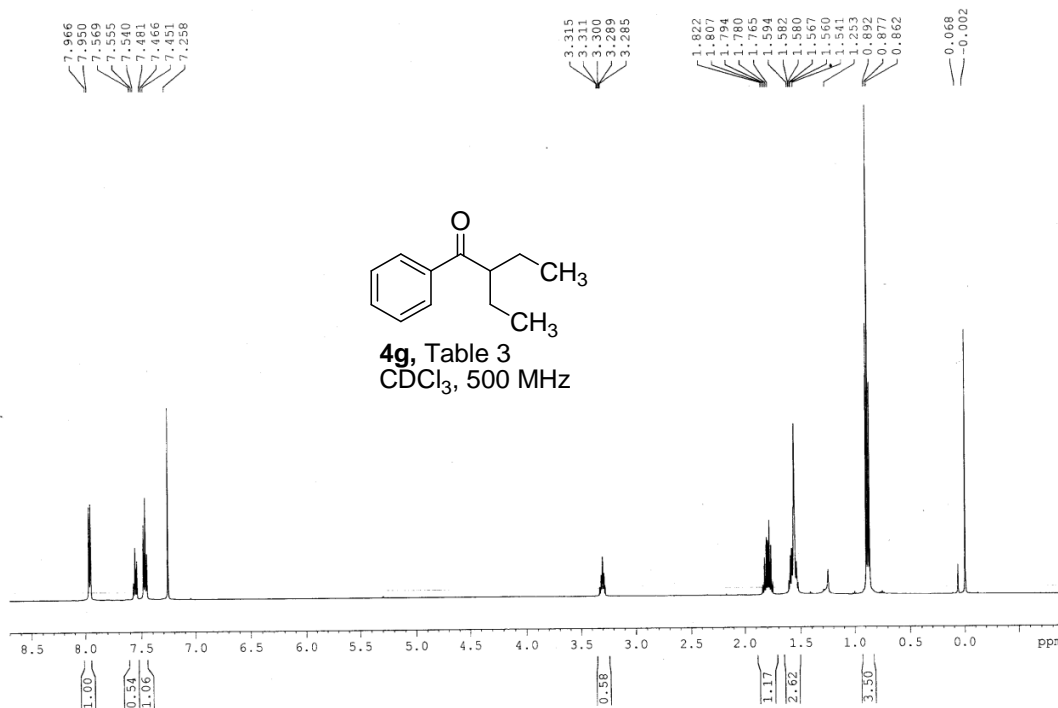
MDY2.225.2-1H (SKD) 16apr15.7



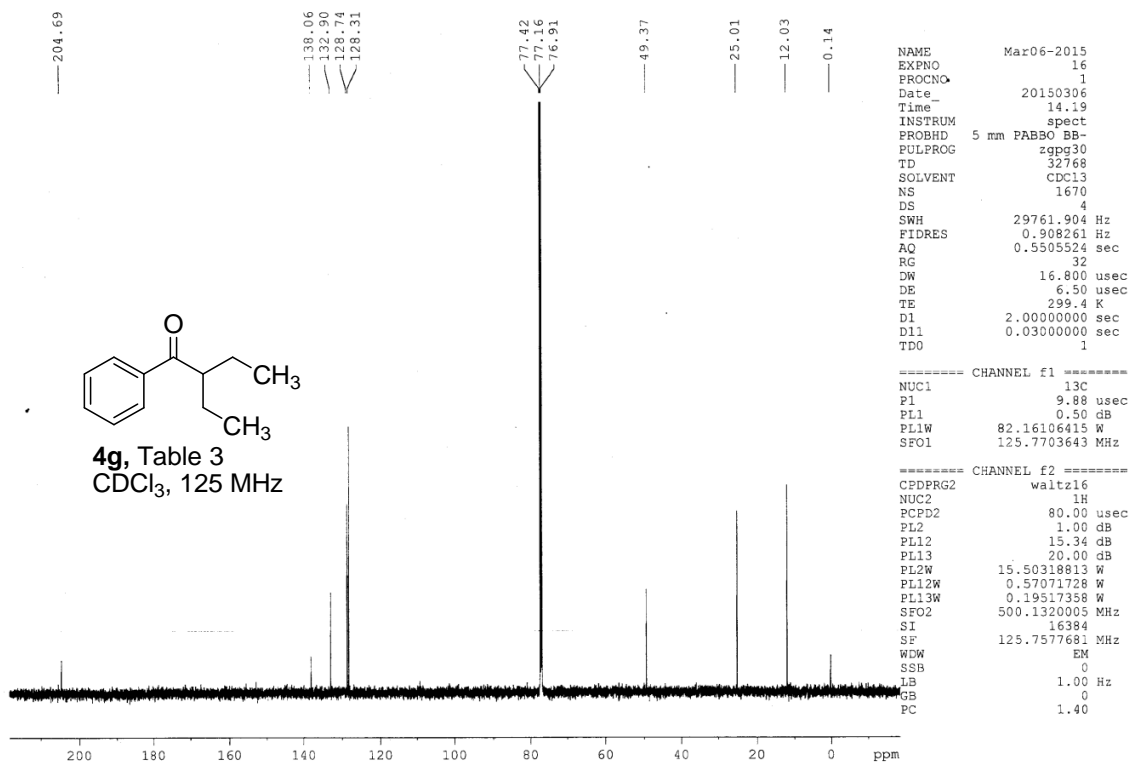
MDY-2-225-2-13C-170415-7- (ND)



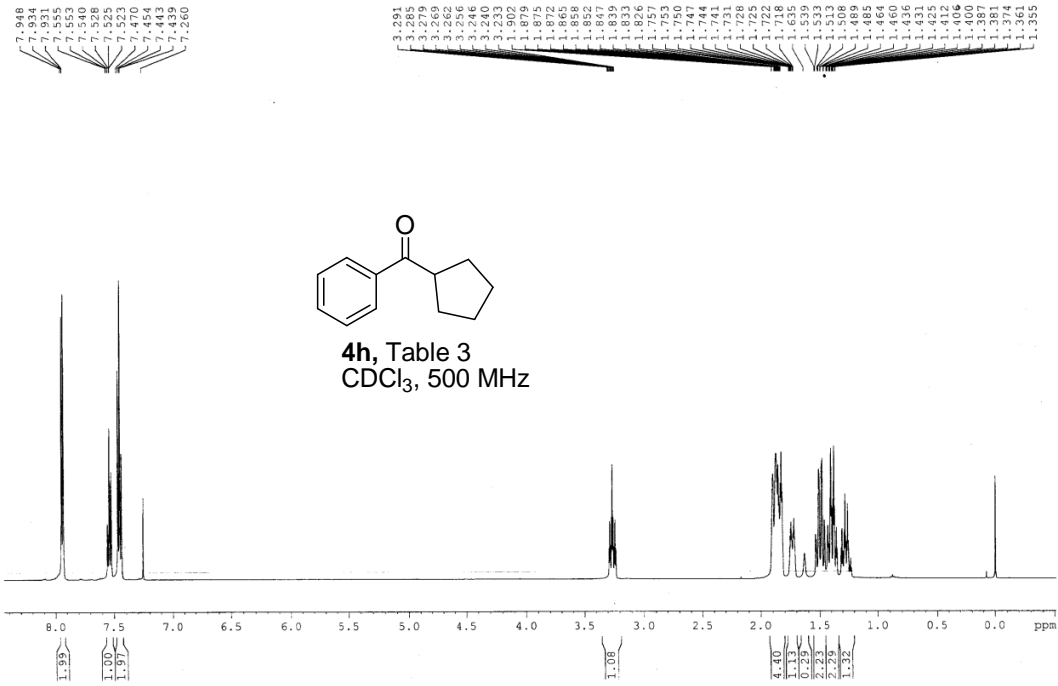
MDY-2-247T-1H(SR) 500MHz



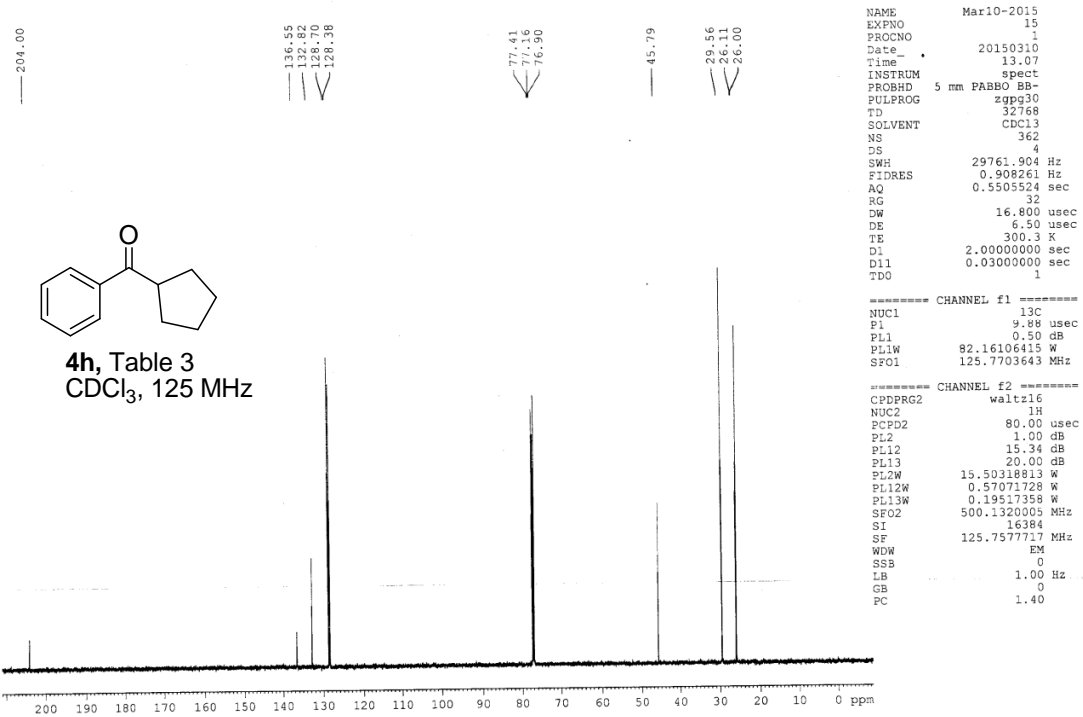
MDY2.247T-13C(SKD) 06mar15.16

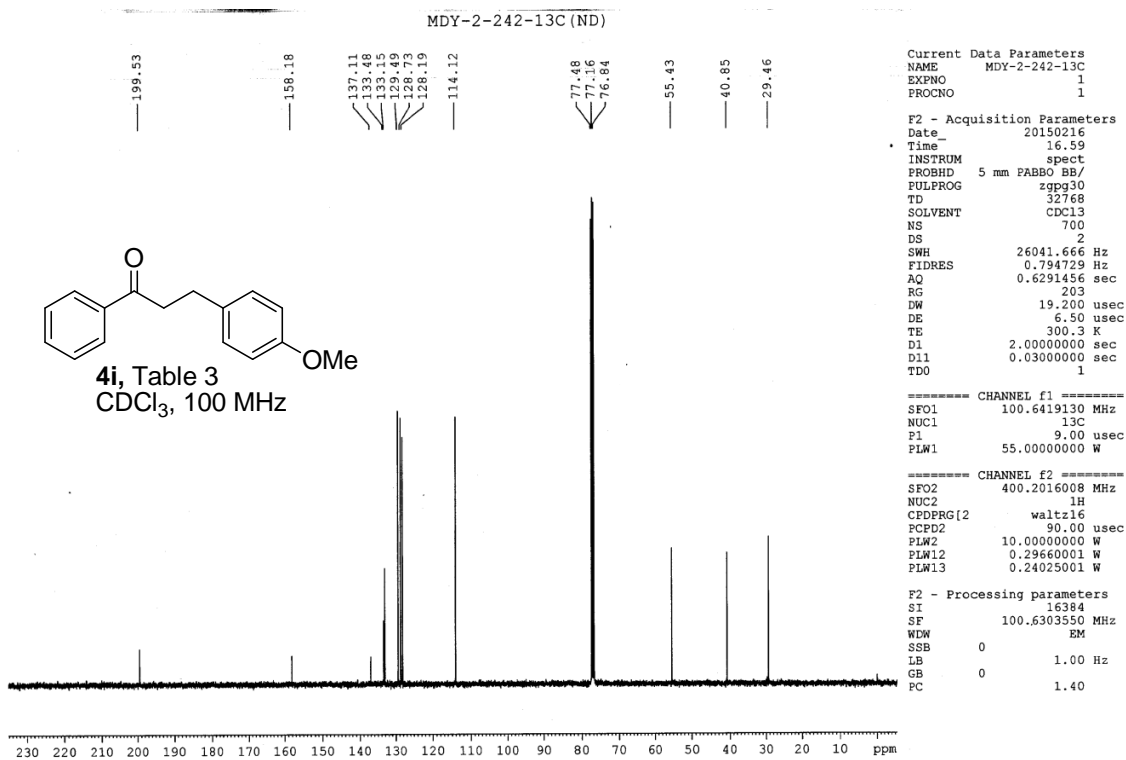
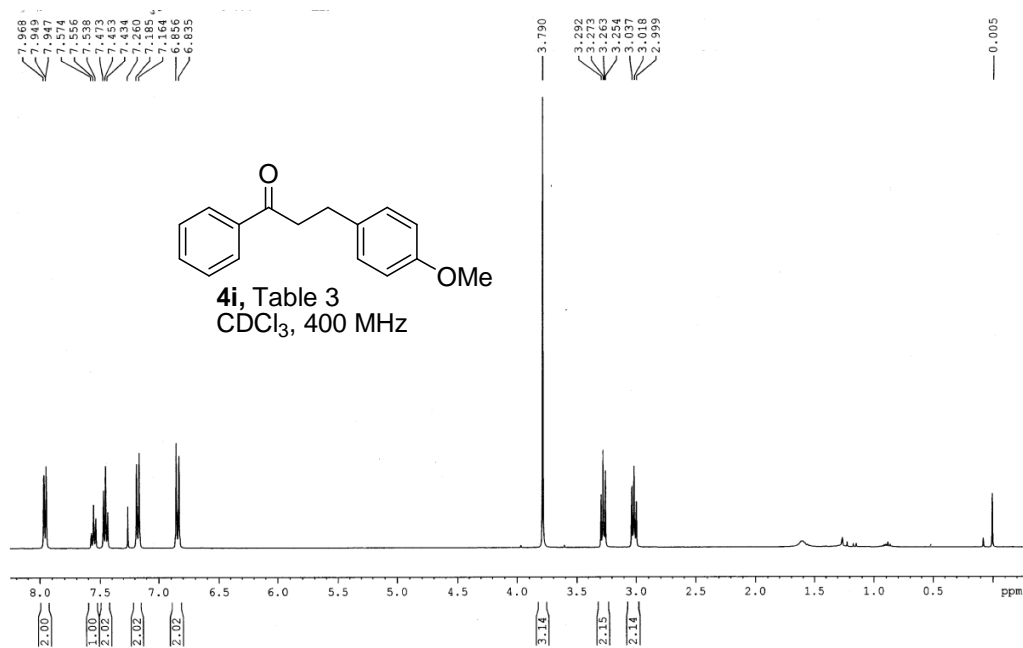


MDY2.226.2-1H(SKD) 09mar15.9

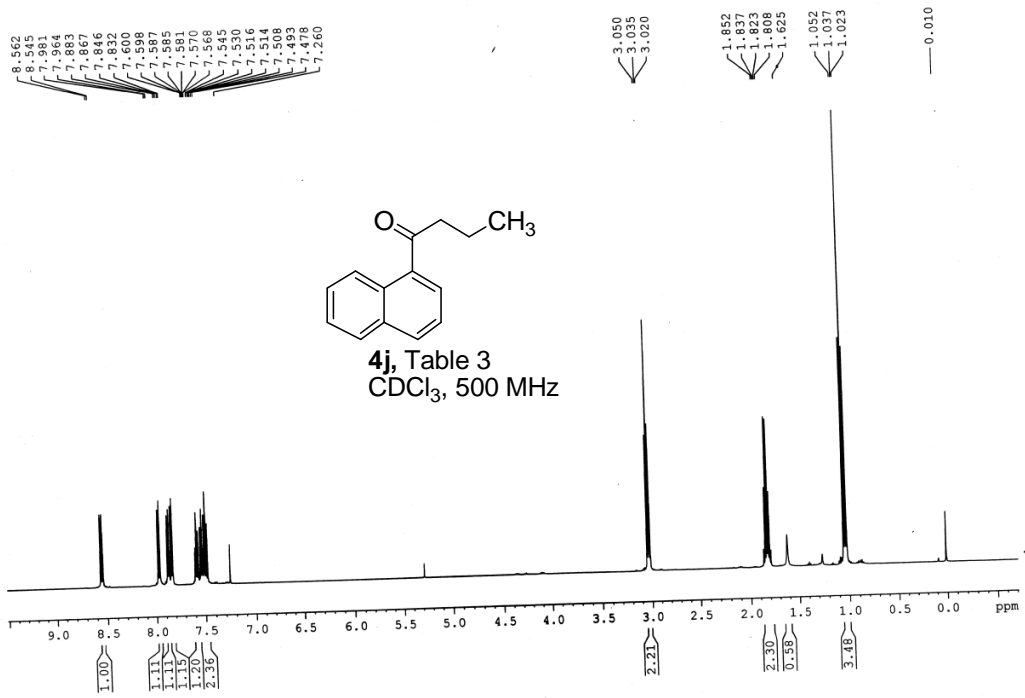


MDY2.226.2-13C(SKD) 10mar15.15





MDY-2-170-1H (SR) 500MHz.



MDY-2-170-13C-0808- (ND)

