

Iron(II) spin crossover complexes with diamidonaphthalene-based Schiff base-like ligands: 1D coordination polymers.

Charles Lochenie^a, Andreas Gebauer^a, Ottokar Klimm^a, Florian Puchtler^b and Birgit Weber^{a*}

SUPPORTING INFORMATION

Figure S1: TGA measurements of samples **1**, **5**, **10**, **11**, and **16**.

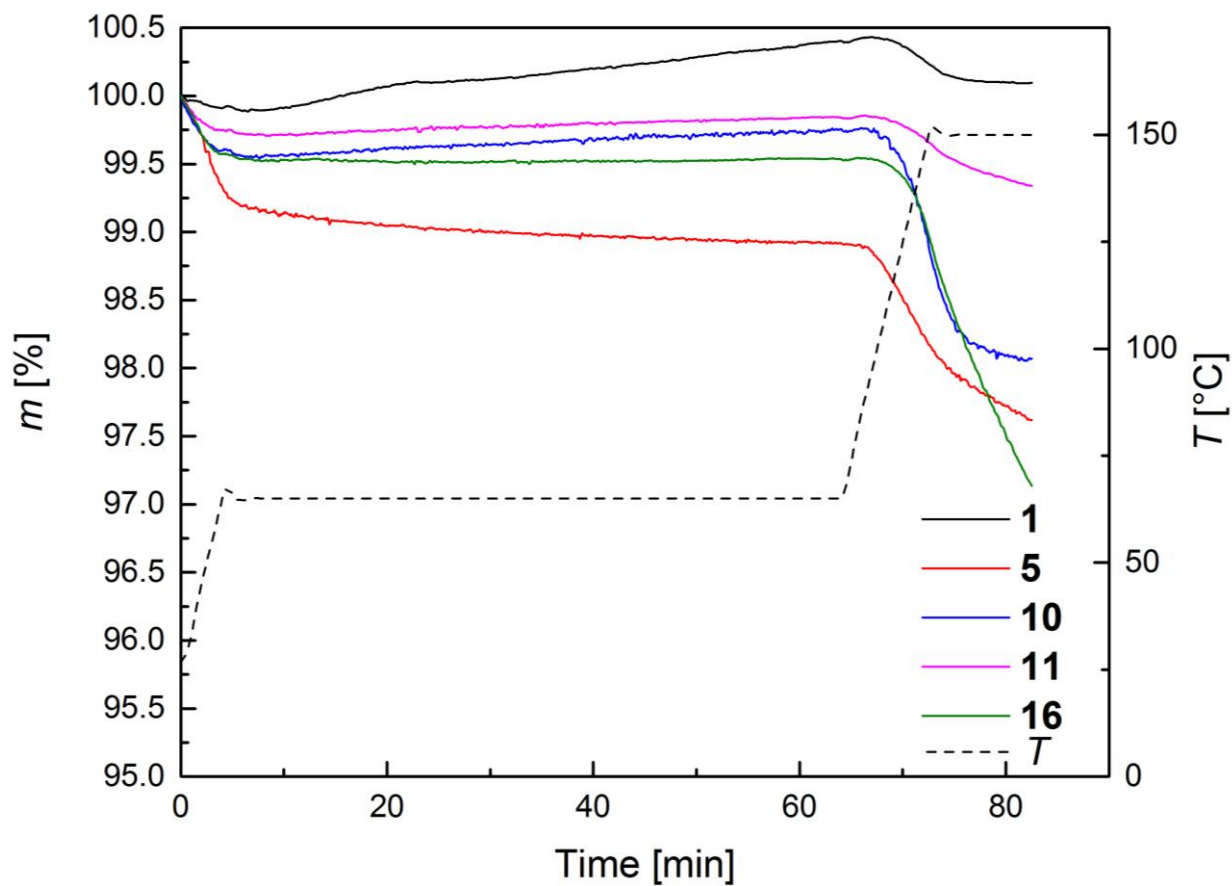


Figure S2: Magnetic susceptibility measurements of compounds **2**, **6**, **7**, **8**, **9** and **12**, displayed between 10 K and 300 K.

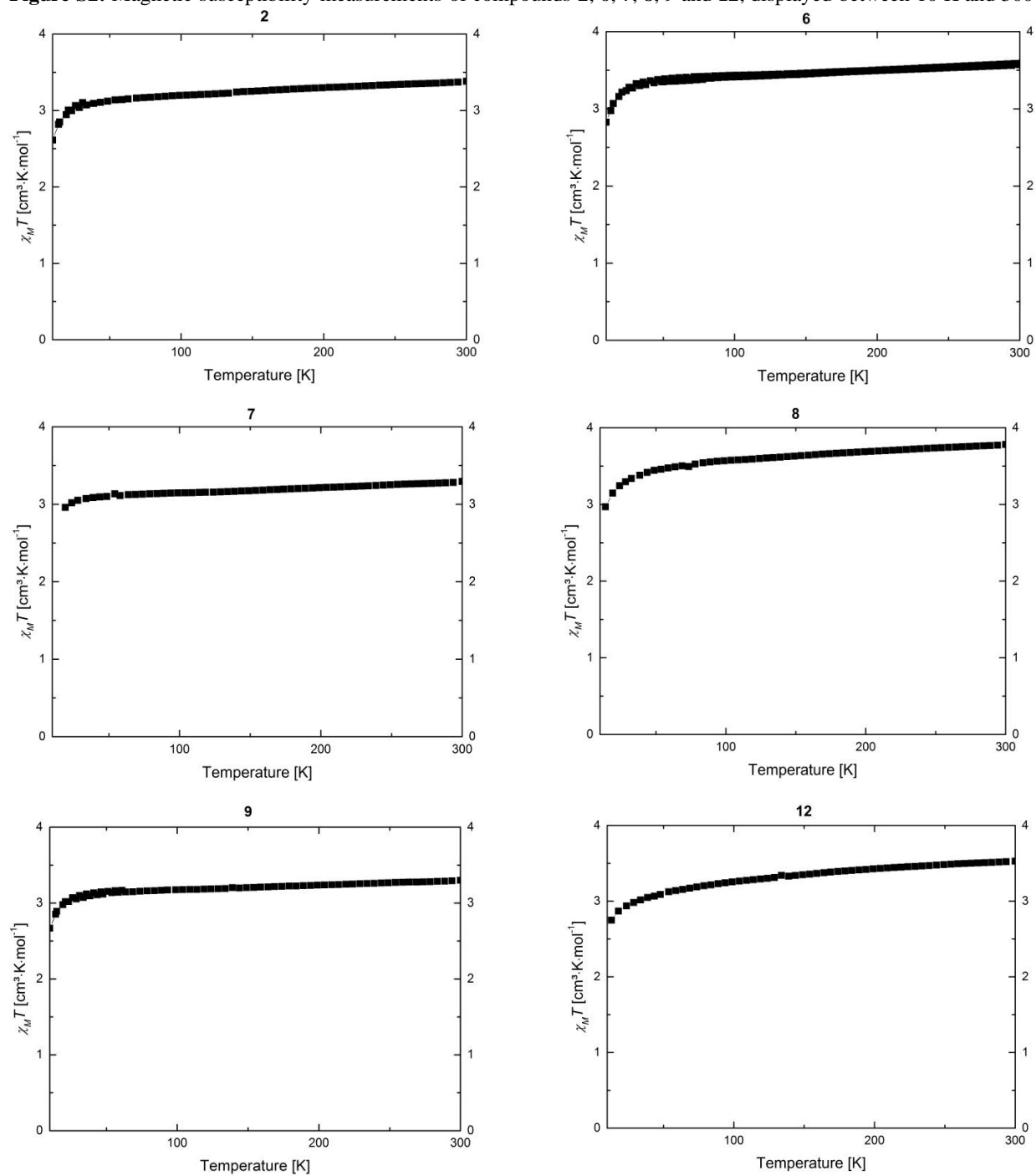


Figure S3: Magnetic susceptibility measurements of compounds **3**, **4**, **13**, and **15**, displayed between 10 K and 300 K.

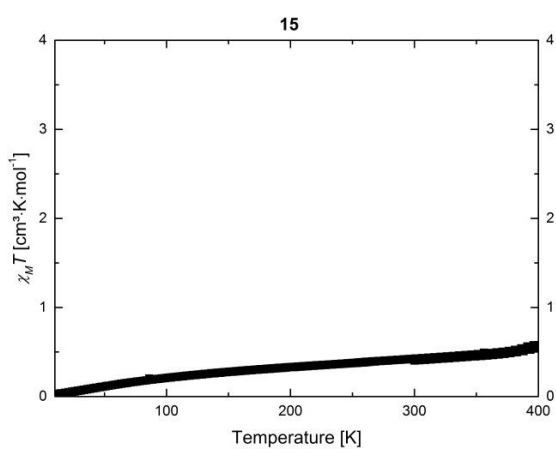
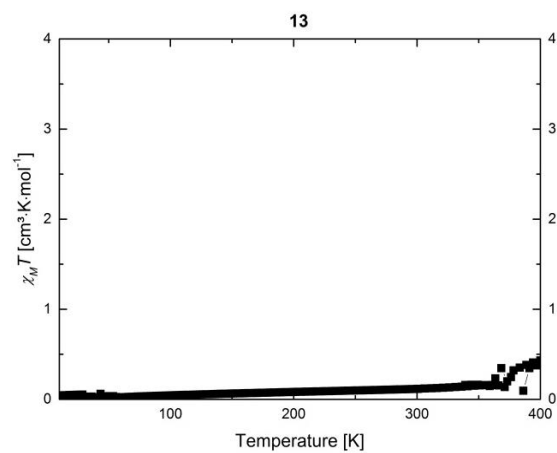
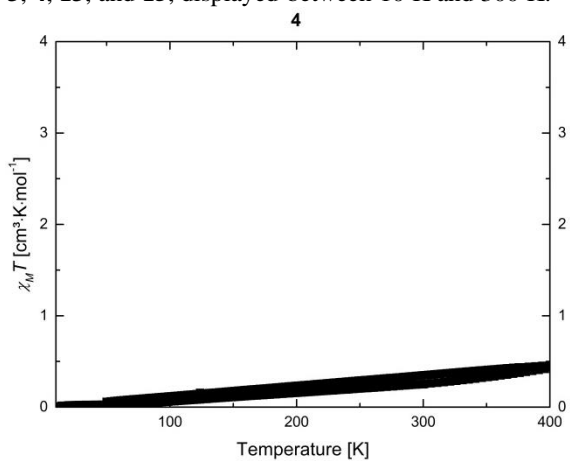
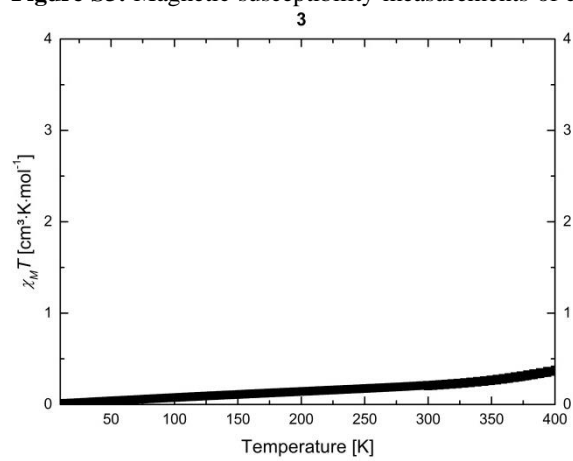


Figure S4: Powder diffraction patterns of samples 2, 3, 4, 6, 7, 8, 9, 12, 13, and 15 at room temperature.

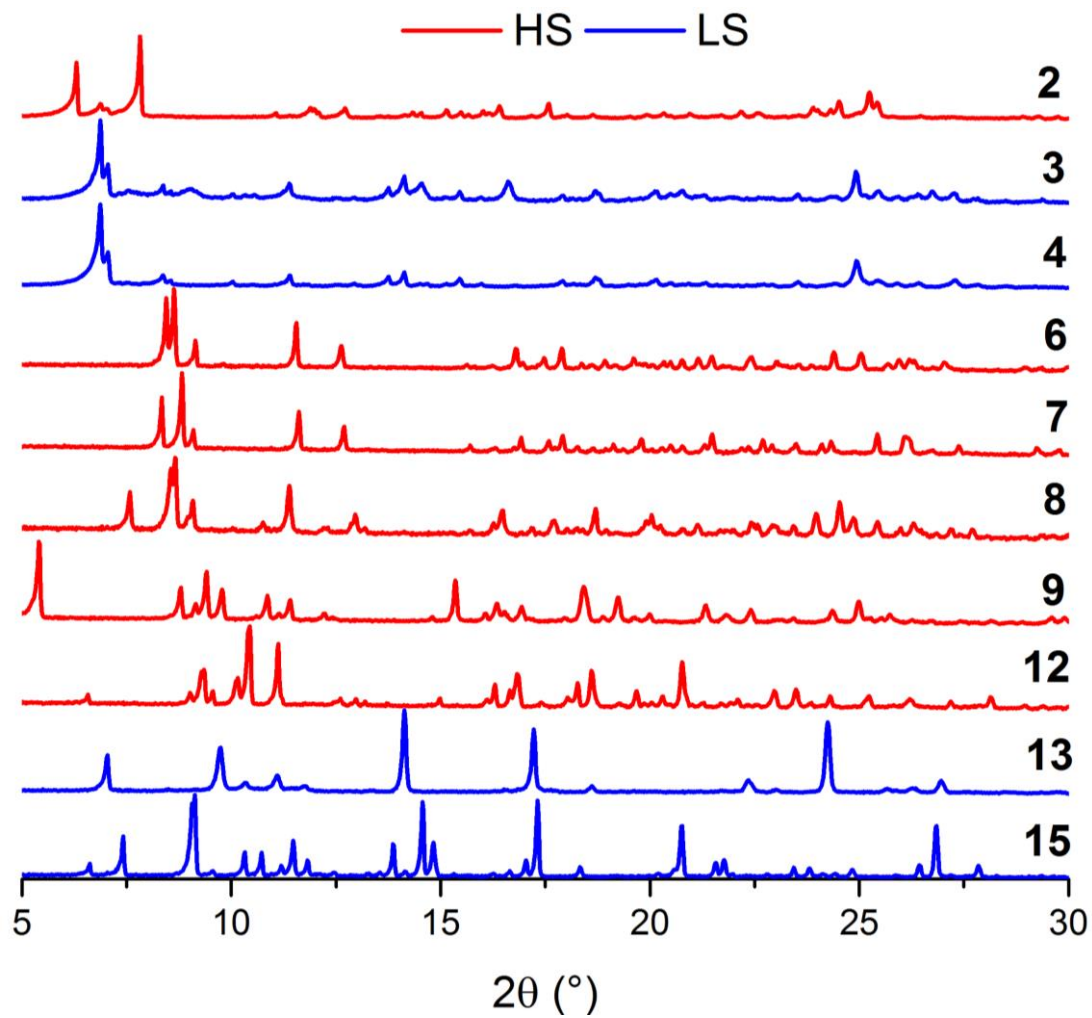


Figure S5: DSC plots of samples **1**, **5**, **10**, **11**, and **16**. Peak temperatures are indicated on the graphs, as well as the scanning direction.

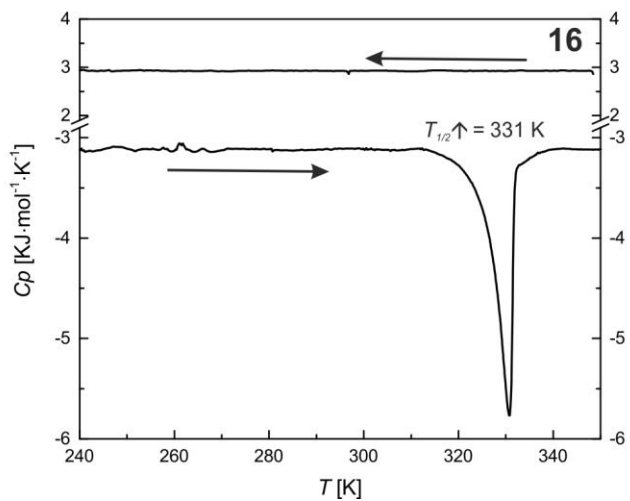
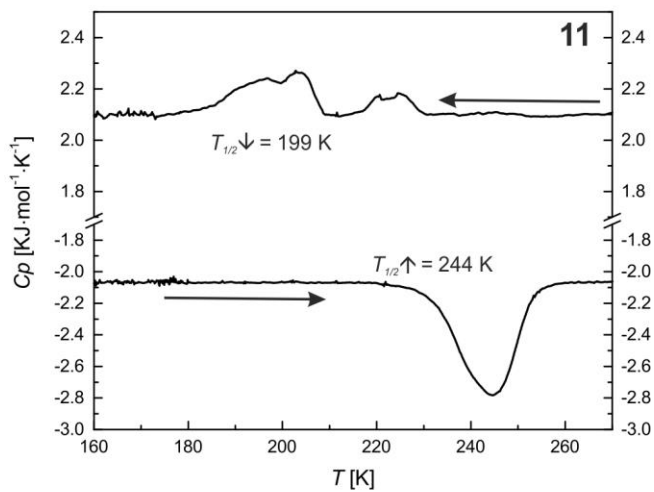
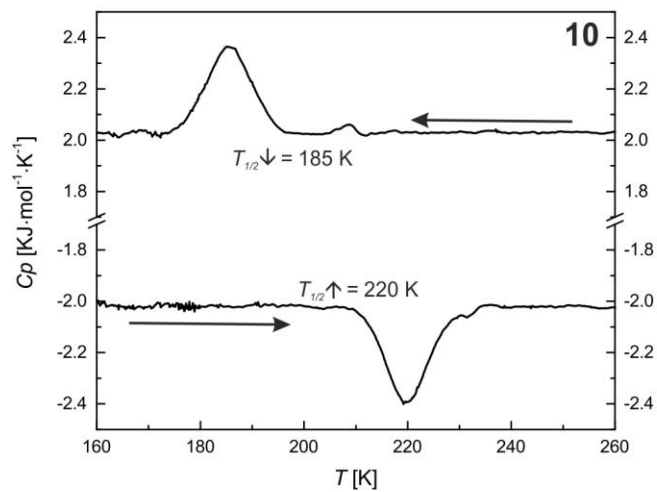
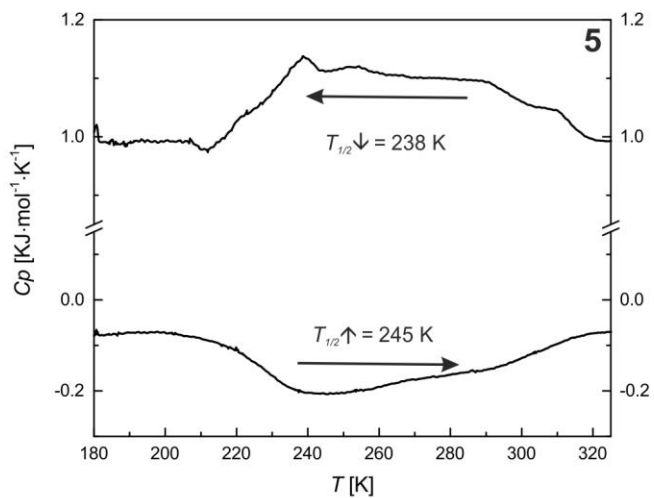
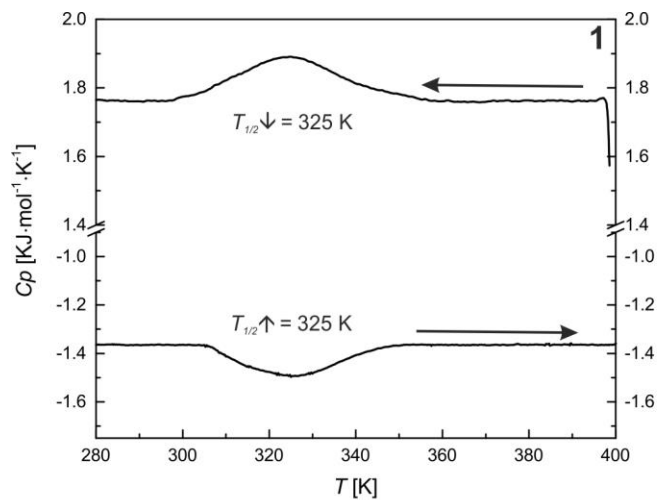


Figure S6: Scanning electron microscopy images of samples 1–4.

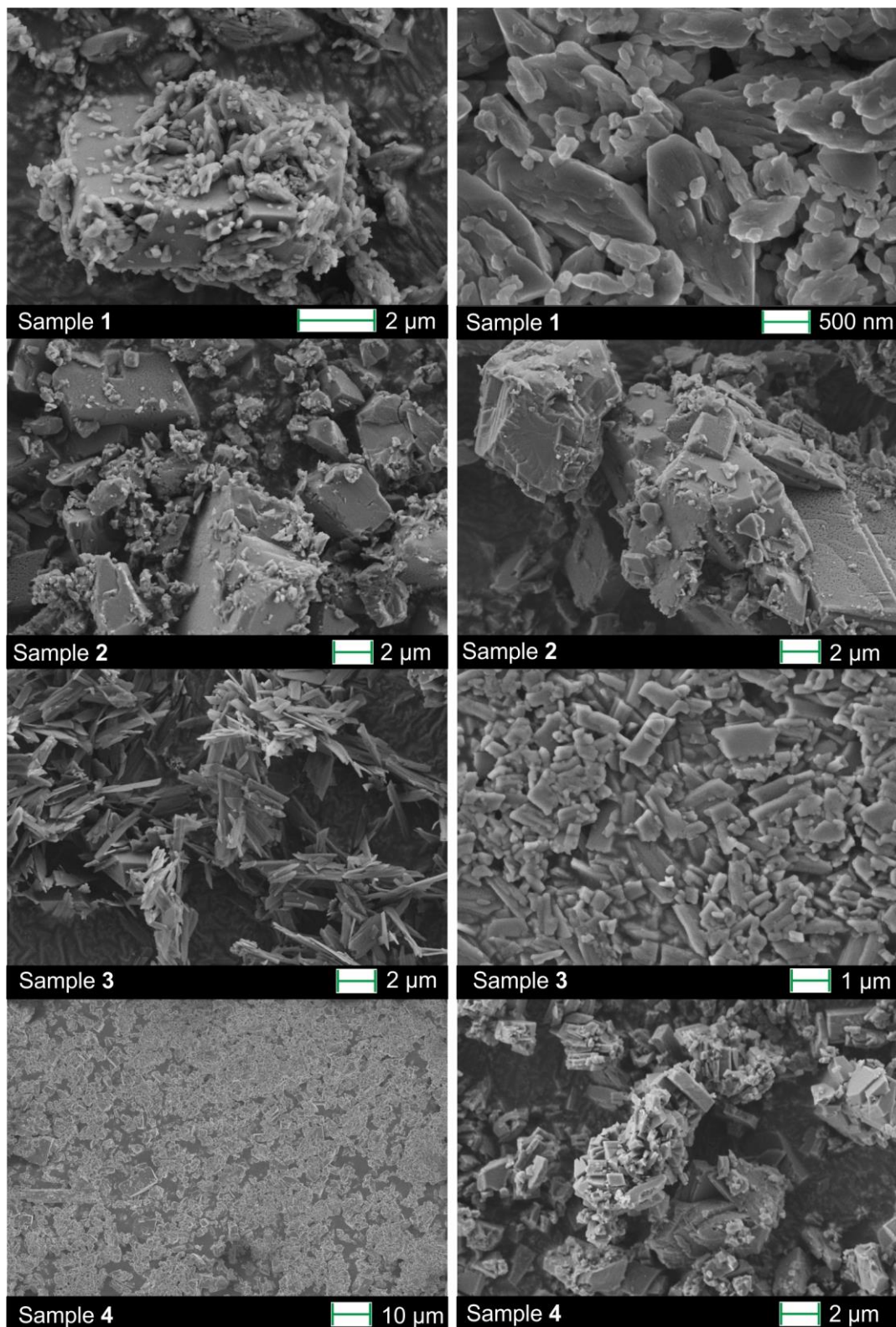


Figure S7: Scanning electron microscopy images of samples 5–8.

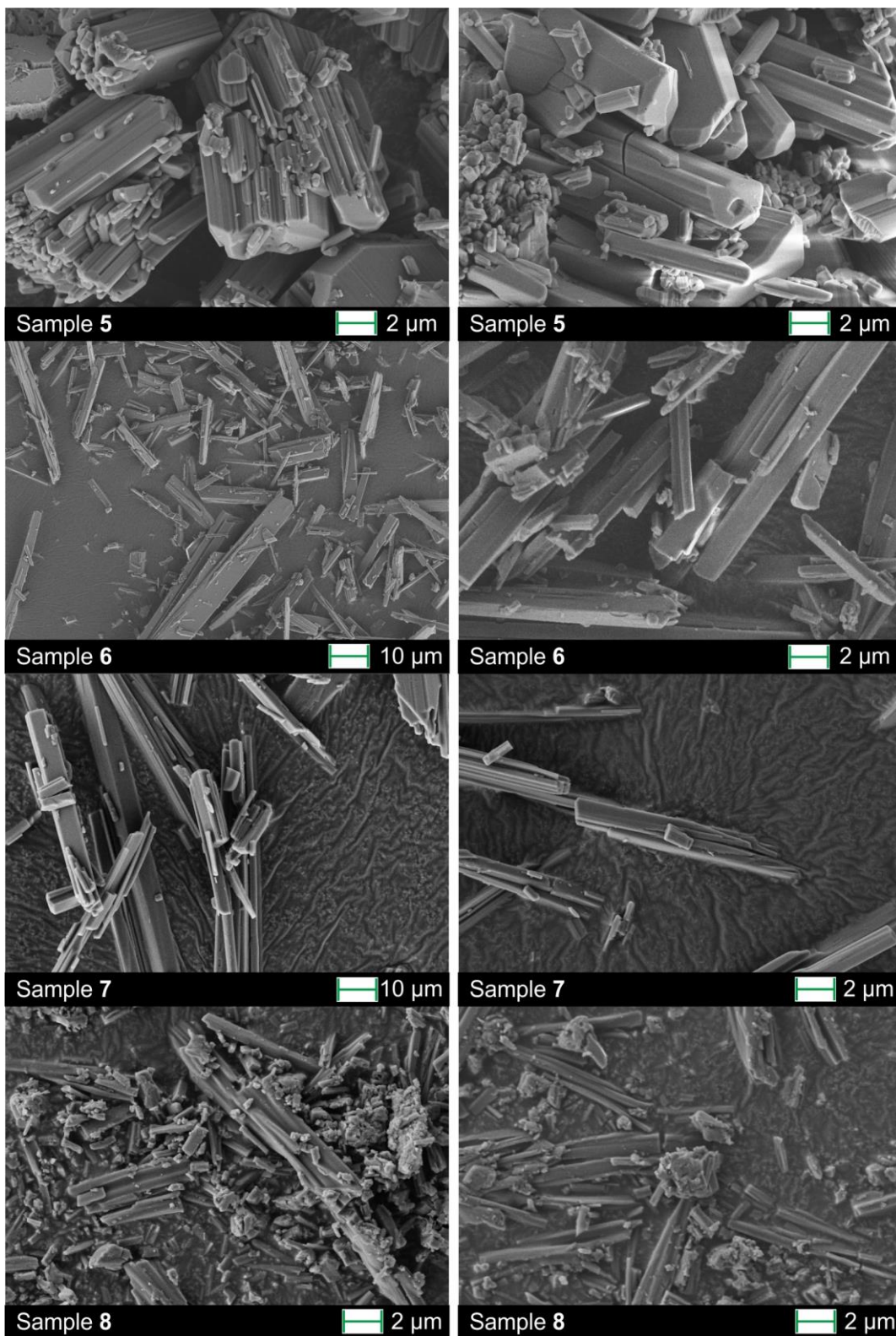


Figure S8: Scanning electron microscopy images of samples 9–12.

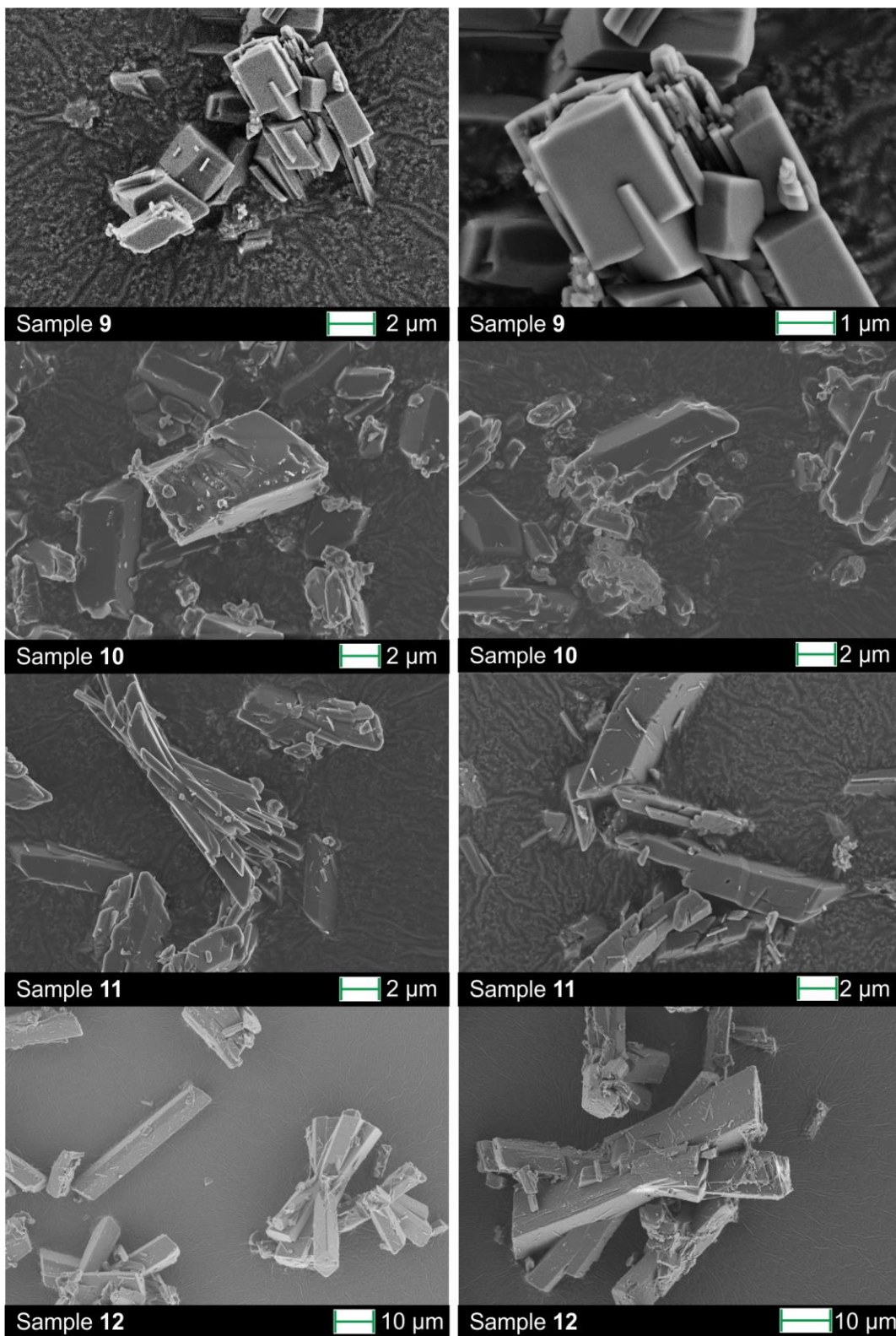


Figure S9: Scanning electron microscopy images of samples 13–16.

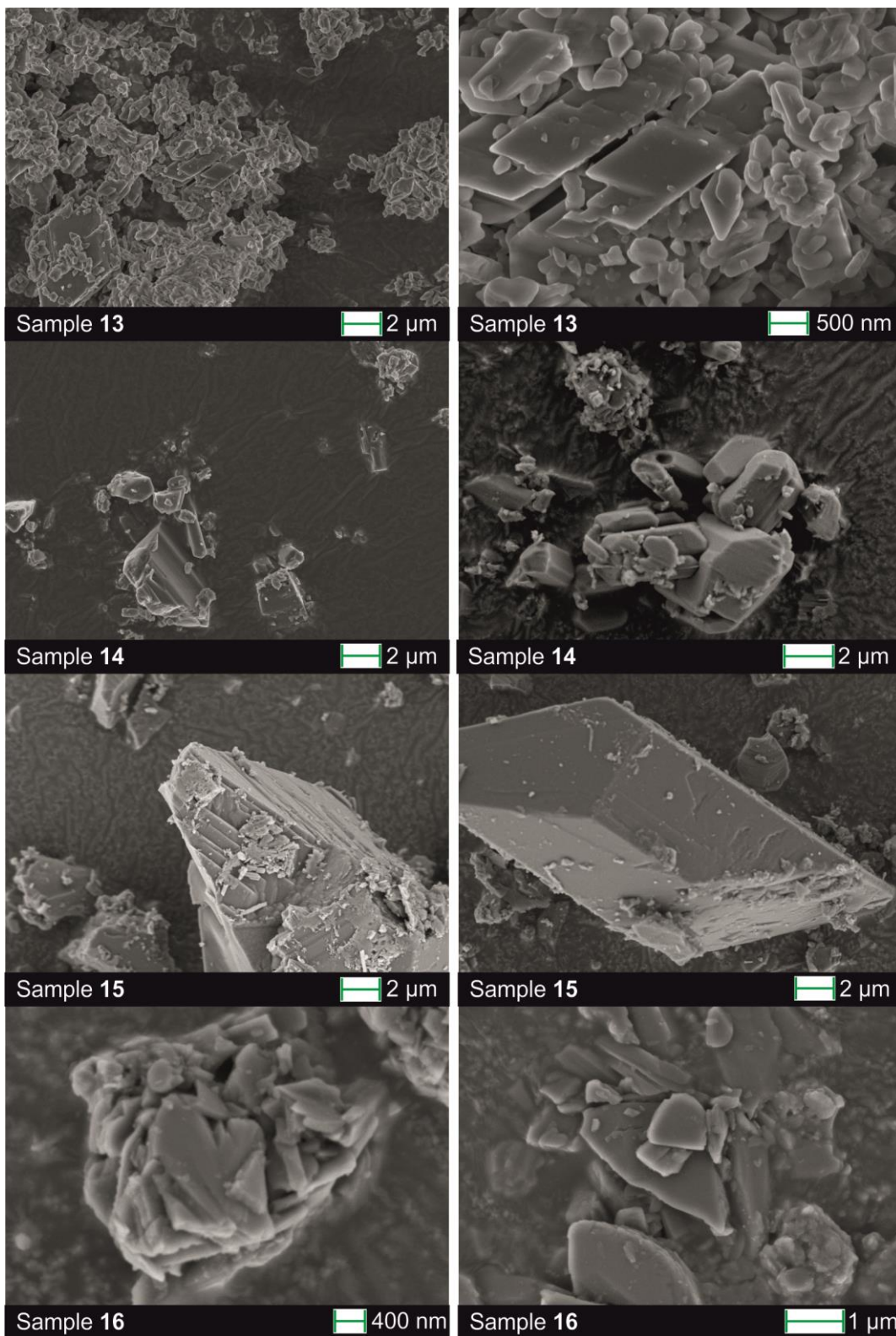


Figure S10: Mössbauer spectra of samples 1–6 at room temperature.

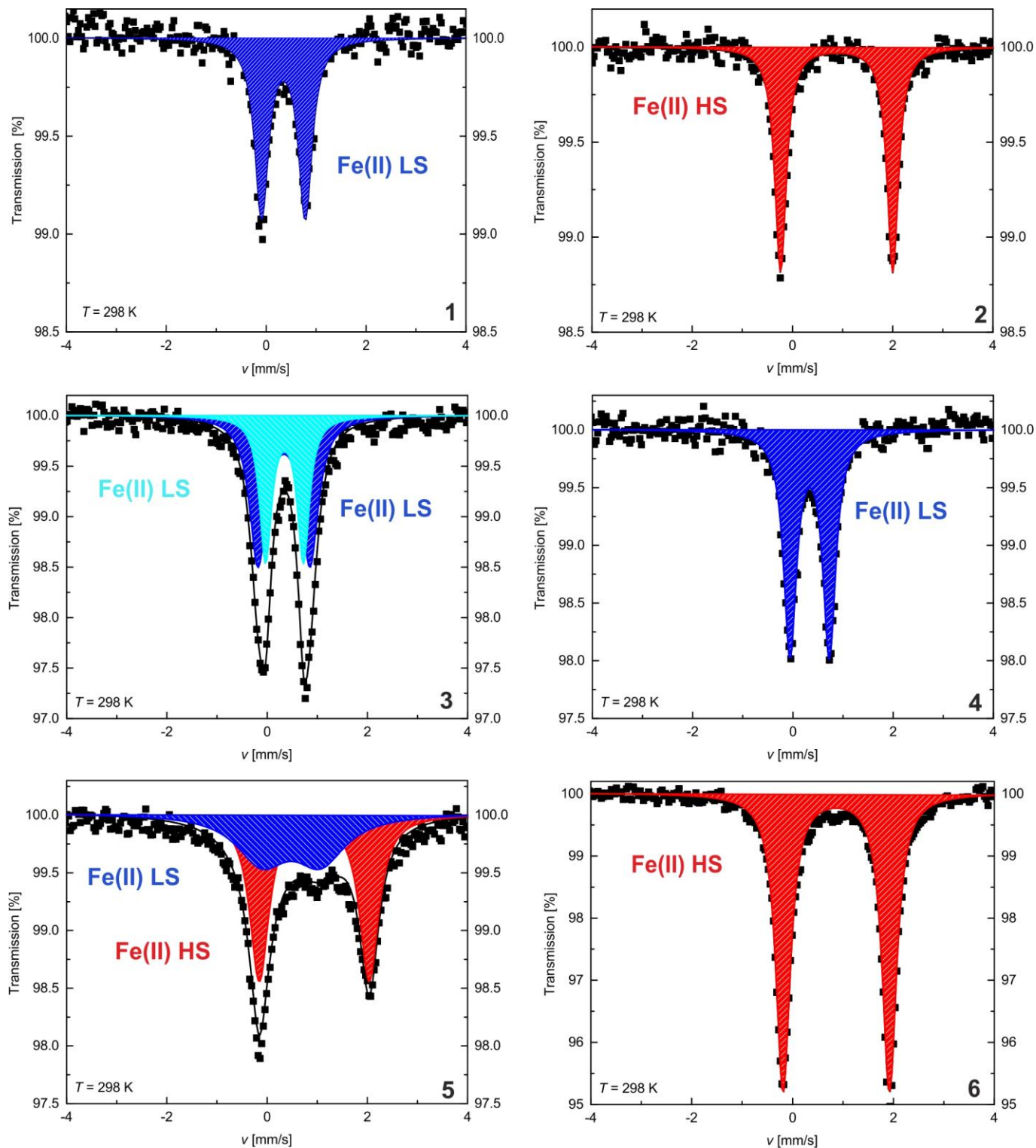


Figure S11: Mössbauer spectra of samples 7–12 at room temperature.

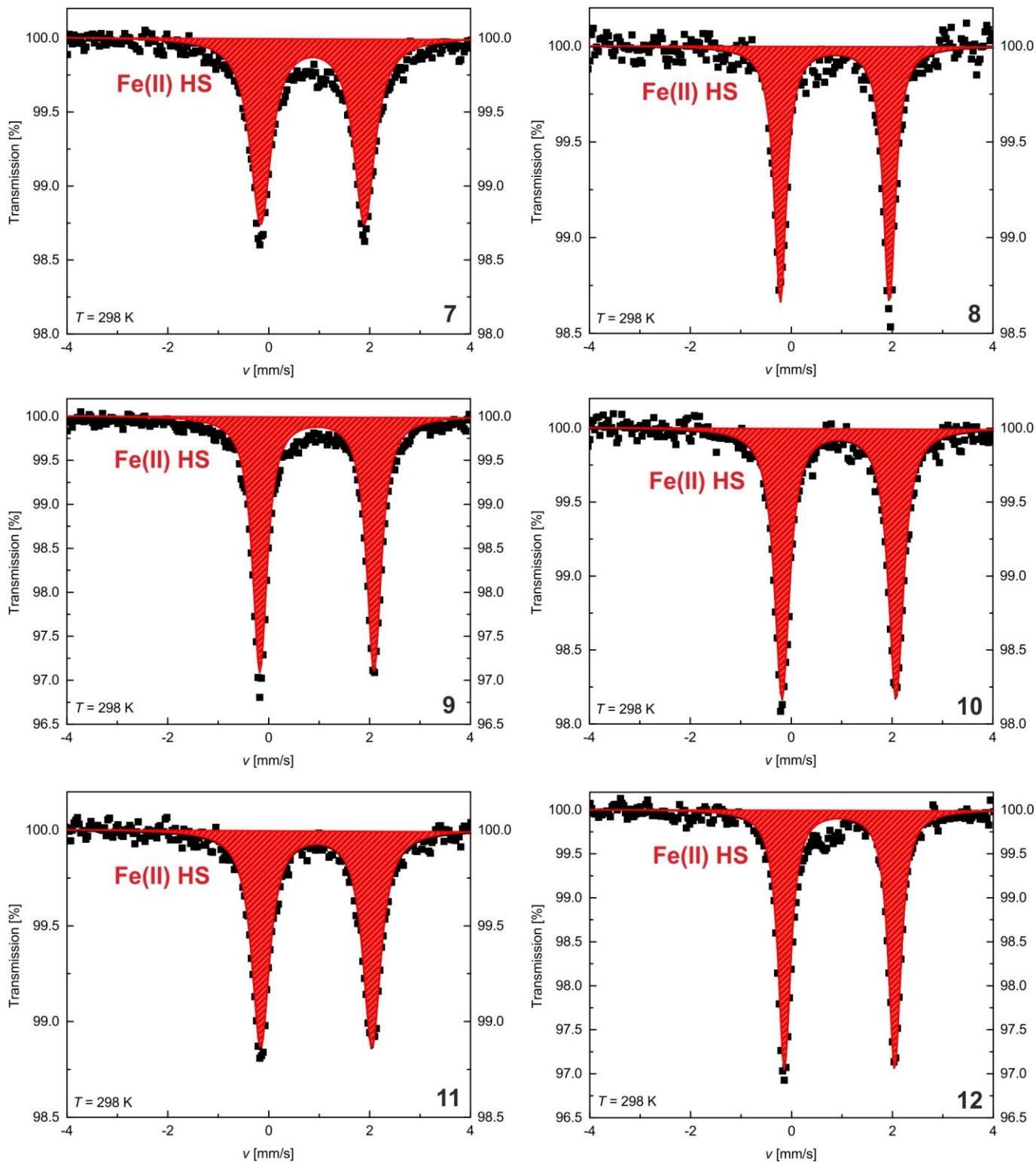


Figure S12: Mössbauer spectra of samples 13–15 at room temperature.

