

**Novel 1,3,4-oxadiazole motifs bearing quinoline nucleus: synthesis, characterization and their biological evaluation for antimicrobial, antitubercular, antimalarial and cytotoxic activity**

*Gaurav G. Ladani and Manish P. Patel\**

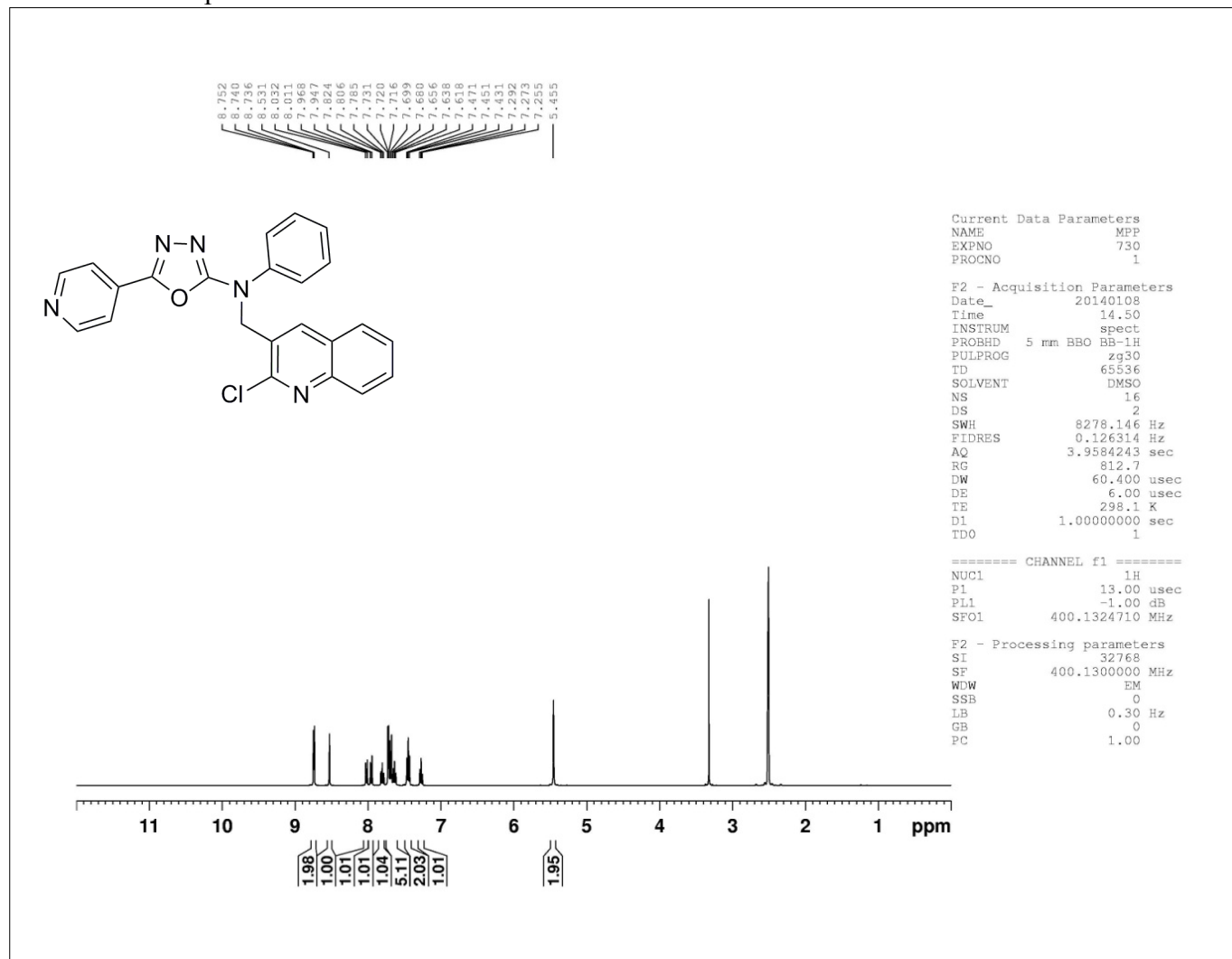
*Department of Chemistry, Sardar Patel University, Vallabh Vidyanagar-388120, Gujarat, India*

*\*E-mail: [patelmanish1069@yahoo.com](mailto:patelmanish1069@yahoo.com)*

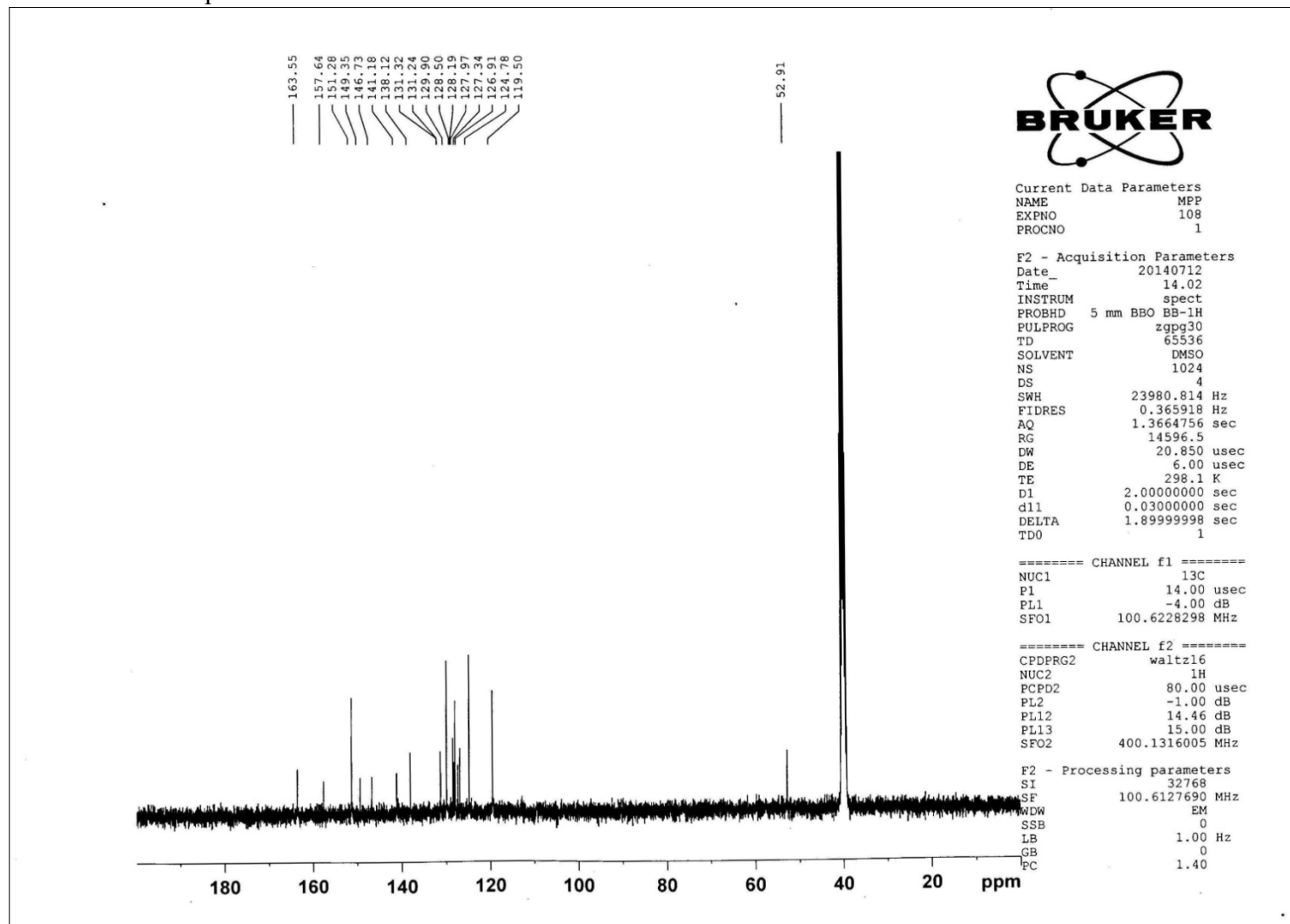
*Tel.: +91 02692 226856; Ext.: 212*

**Supplementary Data of 8a-l**

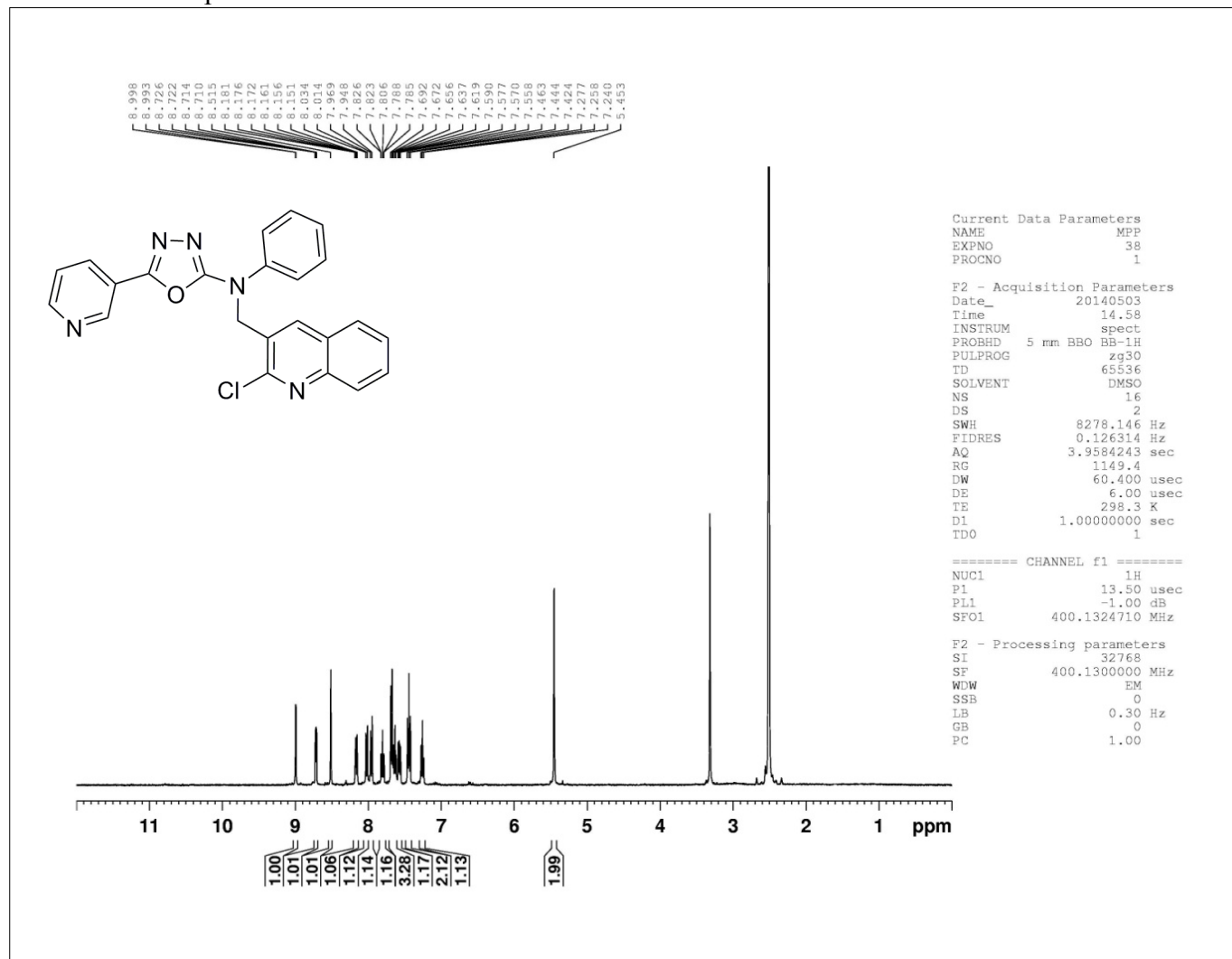
<sup>1</sup>H NMR of Compound 8a:



<sup>13</sup>C NMR of Compound 8a



<sup>1</sup>H NMR of Compound 8b:



<sup>13</sup>C NMR of Compound 8b



Current Data Parameters  
NAME MPP  
EXPNO 101  
PROCNO 1

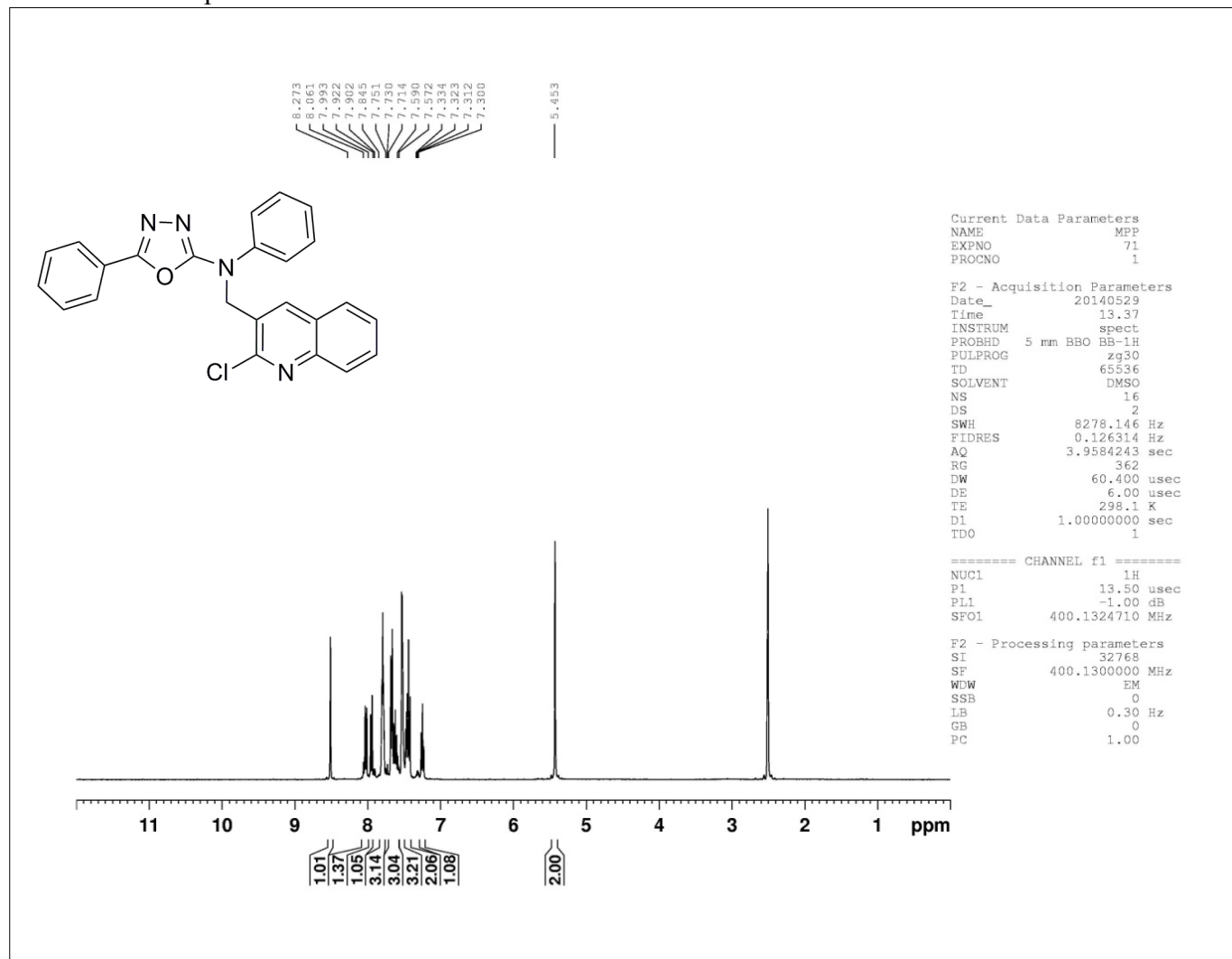
F2 - Acquisition Parameters  
Date 20140711  
Time 11.12  
INSTRUM spect  
PROBHD 5 mm BBO BB-1H  
PULPROG zgpg30  
TD 65536  
SOLVENT DMSO  
NS 1024  
DS 4  
SWH 23980.814 Hz  
FIDRES 0.365918 Hz  
AQ 1.3664756 sec  
RG 14596.5  
DW 20.850 usec  
DE 6.00 usec  
TE 298.1 K  
D1 2.00000000 sec  
d11 0.03000000 sec  
DELTA 1.89999998 sec  
TD0 1

===== CHANNEL f1 =====  
NUC1 13C  
P1 14.00 usec  
PL1 -4.00 dB  
SFO1 100.6228298 MHz

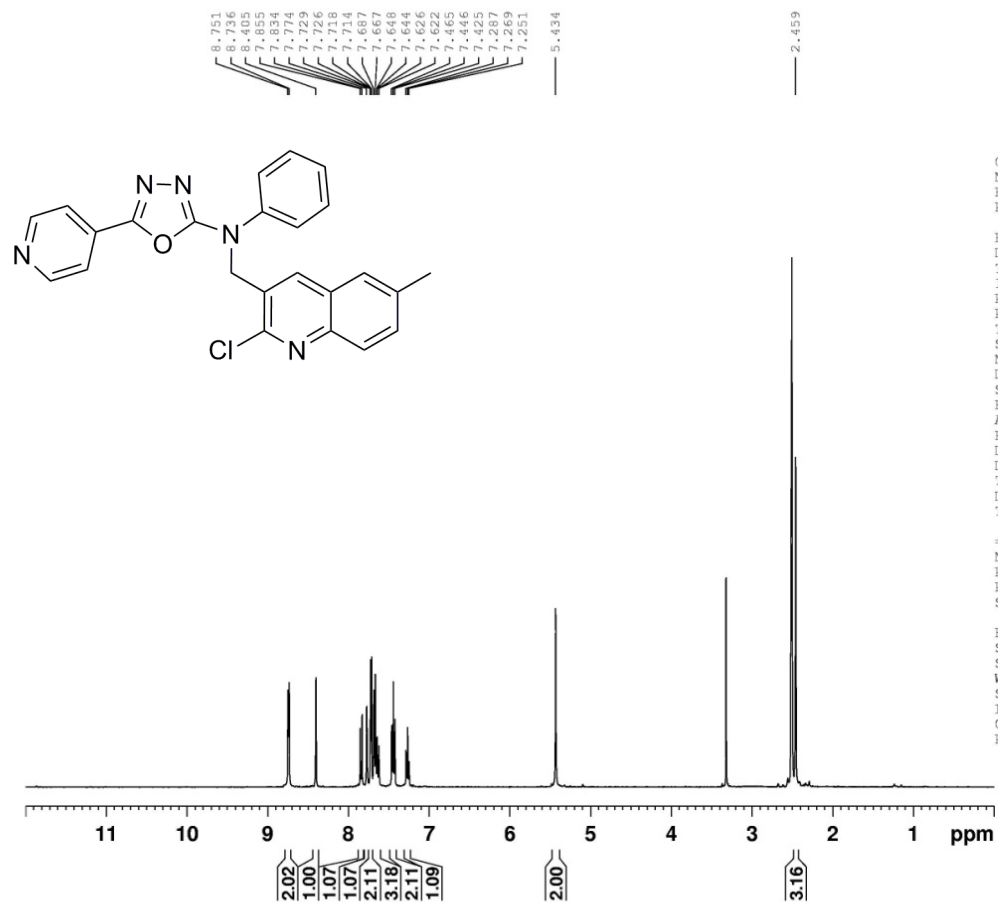
===== CHANNEL f2 =====  
CPDPRG2 waltz16  
NUC2 1H  
PCPD2 80.00 usec  
PL2 -1.00 dB  
PL12 14.46 dB  
PL13 15.00 dB  
SFO2 400.1316005 MHz

F2 - Processing parameters  
SI 32768  
SF 100.6127690 MHz  
WDW EM  
SSB 0  
LB 1.00 Hz  
GB 0  
PC 1.40

<sup>1</sup>H NMR of Compound 8c:



<sup>1</sup>H NMR of Compound 8d:



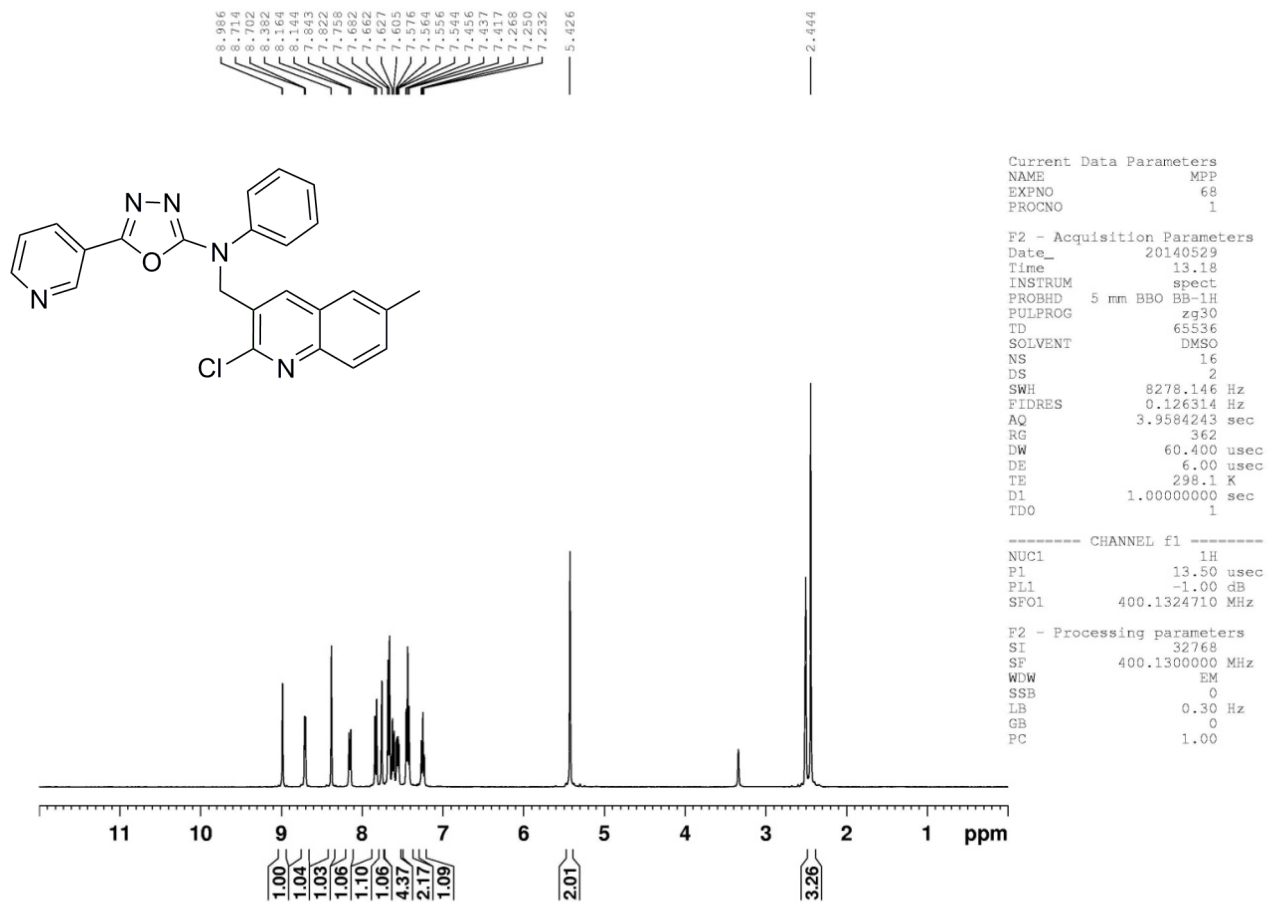
Current Data Parameters  
NAME MPP  
EXPNO 39  
PROCNO 1

F2 - Acquisition Parameters  
Date\_ 20140503  
Time 15.04  
INSTRUM spect  
PROBHD 5 mm BBO BB-1H  
PULPROG zg30  
TD 65536  
SOLVENT DMSO  
NS 16  
DS 2  
SWH 8278.146 Hz  
FIDRES 0.126314 Hz  
AQ 3.9584243 sec  
RG 1149.4  
DW 60.400 usec  
DE 6.00 usec  
TE 298.4 K  
D1 1.00000000 sec  
TD0 1

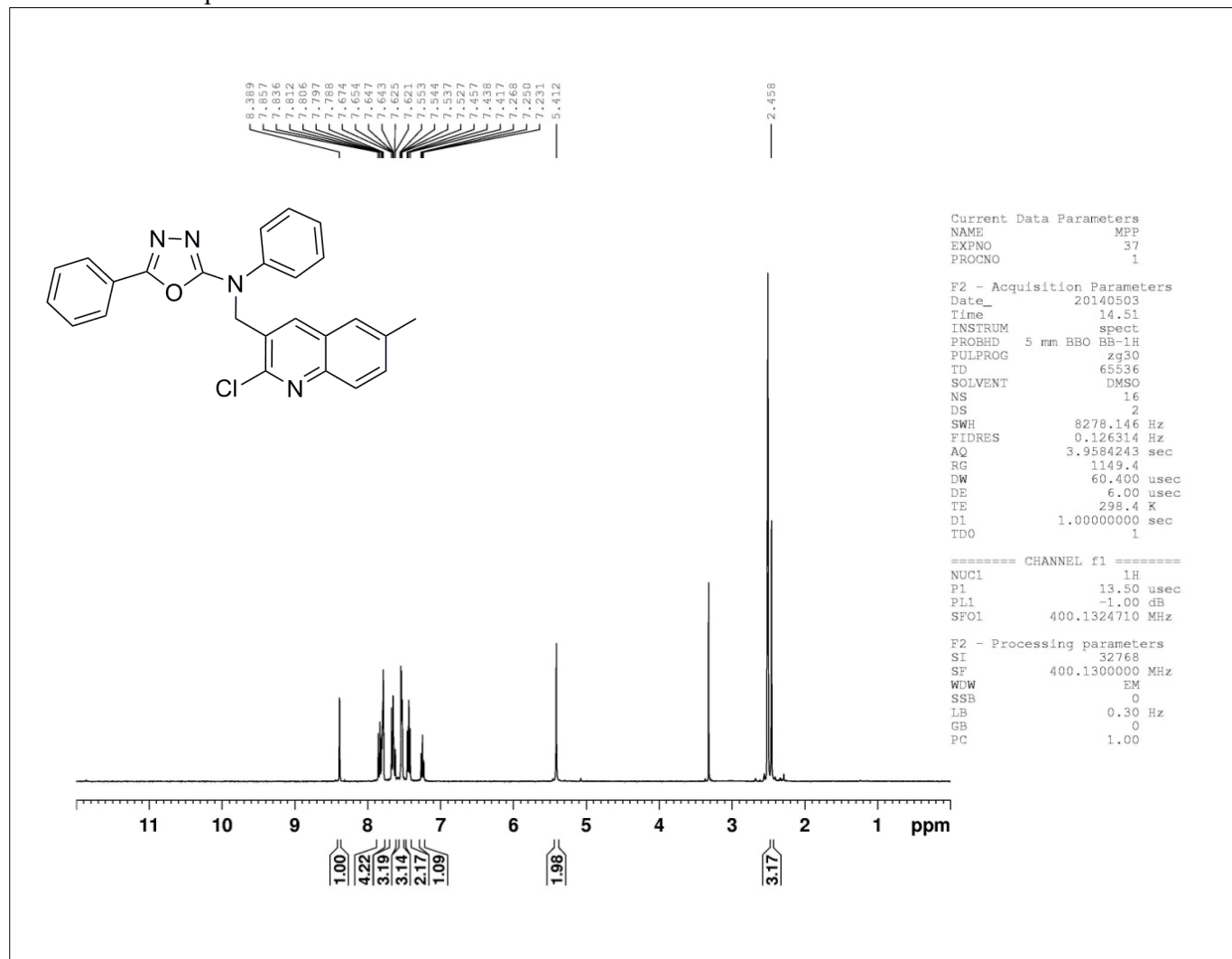
===== CHANNEL f1 =====  
NUC1 1H  
P1 13.50 usec  
PL1 -1.00 dB  
SFO1 400.1324710 MHz

F2 - Processing parameters  
SI 32768  
SF 400.1300000 MHz  
WDW EM  
SSB 0  
LB 0.30 Hz  
GB 0  
PC 1.00

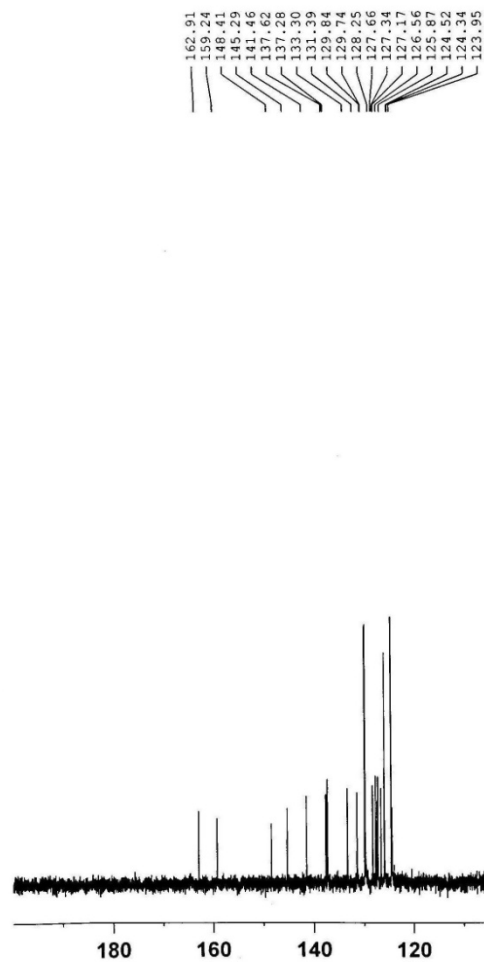
<sup>1</sup>H NMR of Compound 8e:



<sup>1</sup>H NMR of Compound 8f:



<sup>13</sup>C NMR of Compound 8f



Current Data Parameters  
NAME MPP  
EXPNO 107  
PROCNO 1

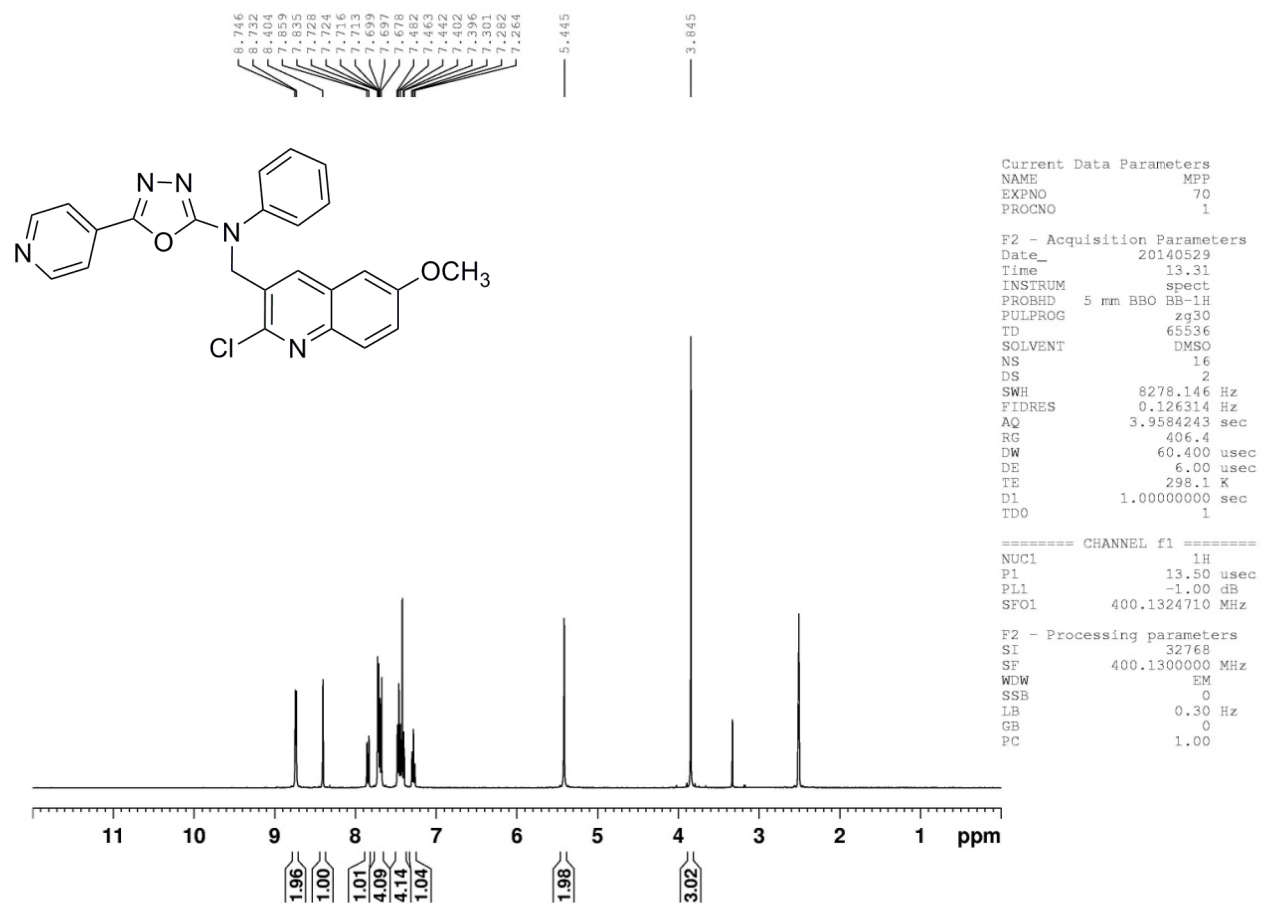
F2 - Acquisition Parameters  
Date\_ 20140711  
Time 16.06  
INSTRUM spect  
PROBHD 5 mm BBO BB-1H  
PULPROG zgpg30  
TD 65536  
SOLVENT DMSO  
NS 556  
DS 4  
SWH 23980.814 Hz  
FIDRES 0.365918 Hz  
AQ 1.3664756 sec  
RG 7298.2  
DW 20.850 usec  
DE 6.00 usec  
TE 296.7 K  
D1 2.0000000 sec  
d11 0.03000000 sec  
DELTA 1.89999998 sec  
TD0 1

===== CHANNEL f1 =====  
NUC1 13C  
P1 14.00 usec  
PL1 -4.00 dB  
SFO1 100.6228298 MHz

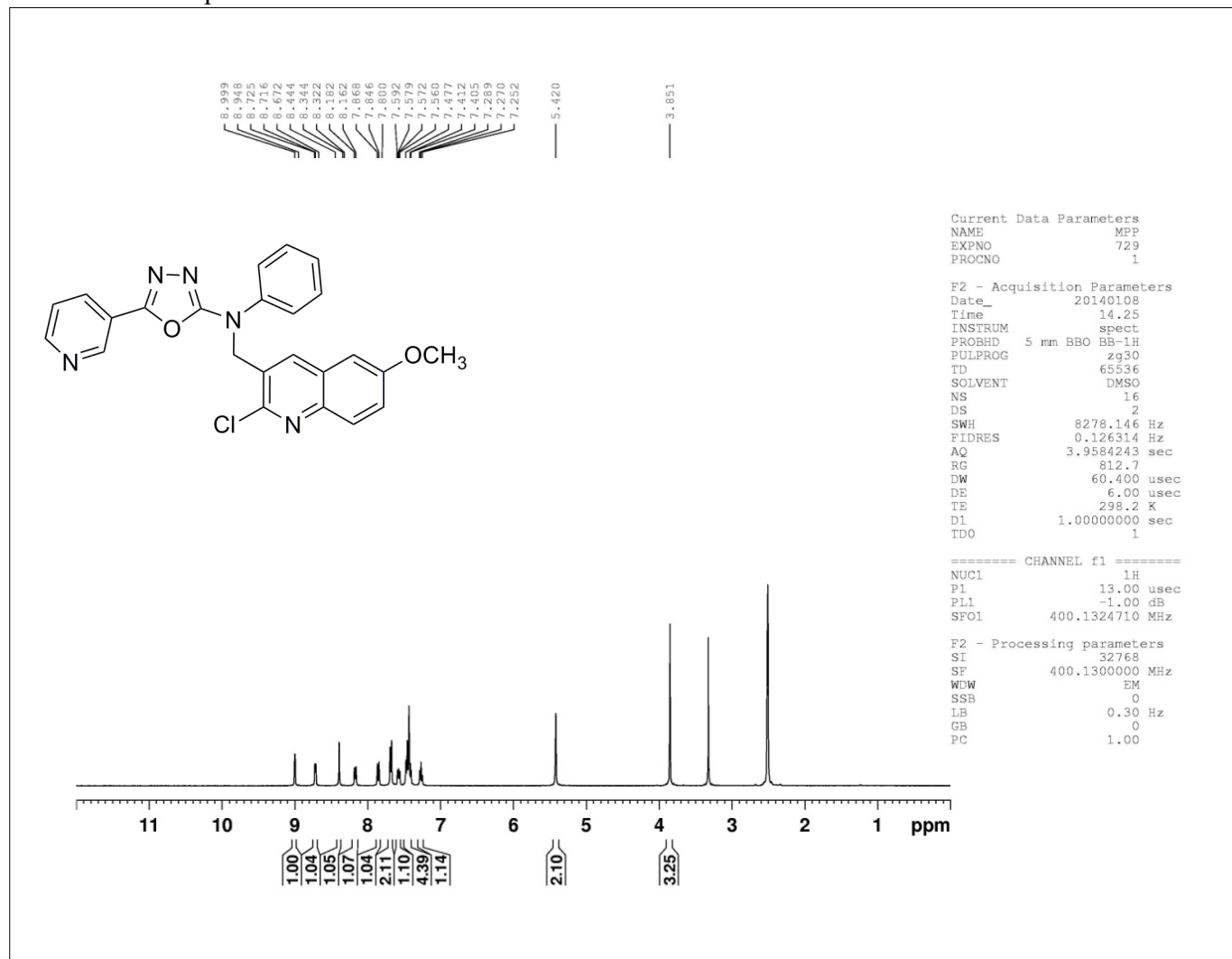
===== CHANNEL f2 =====  
CPDPRG2 waltz16  
NUC2 1H  
PCPD2 80.00 usec  
PL2 -1.00 dB  
PL12 14.46 dB  
PL13 15.00 dB  
SFO2 400.1316005 MHz

F2 - Processing parameters  
SI 32768  
SF 100.6127690 MHz  
WDW EM  
SSB 0  
LB 1.00 Hz  
GB 0  
PC 1.40

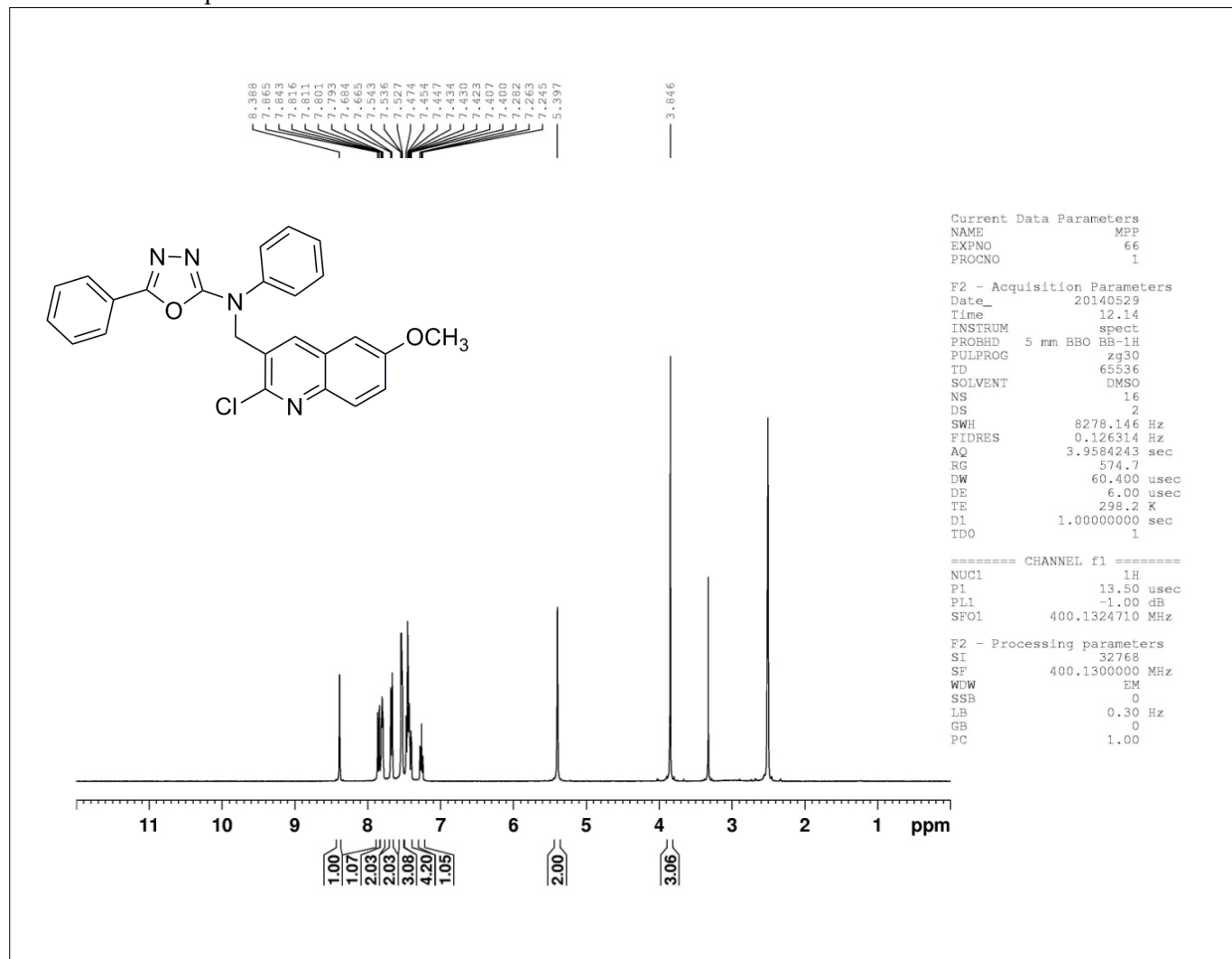
<sup>1</sup>H NMR of Compound 8g:



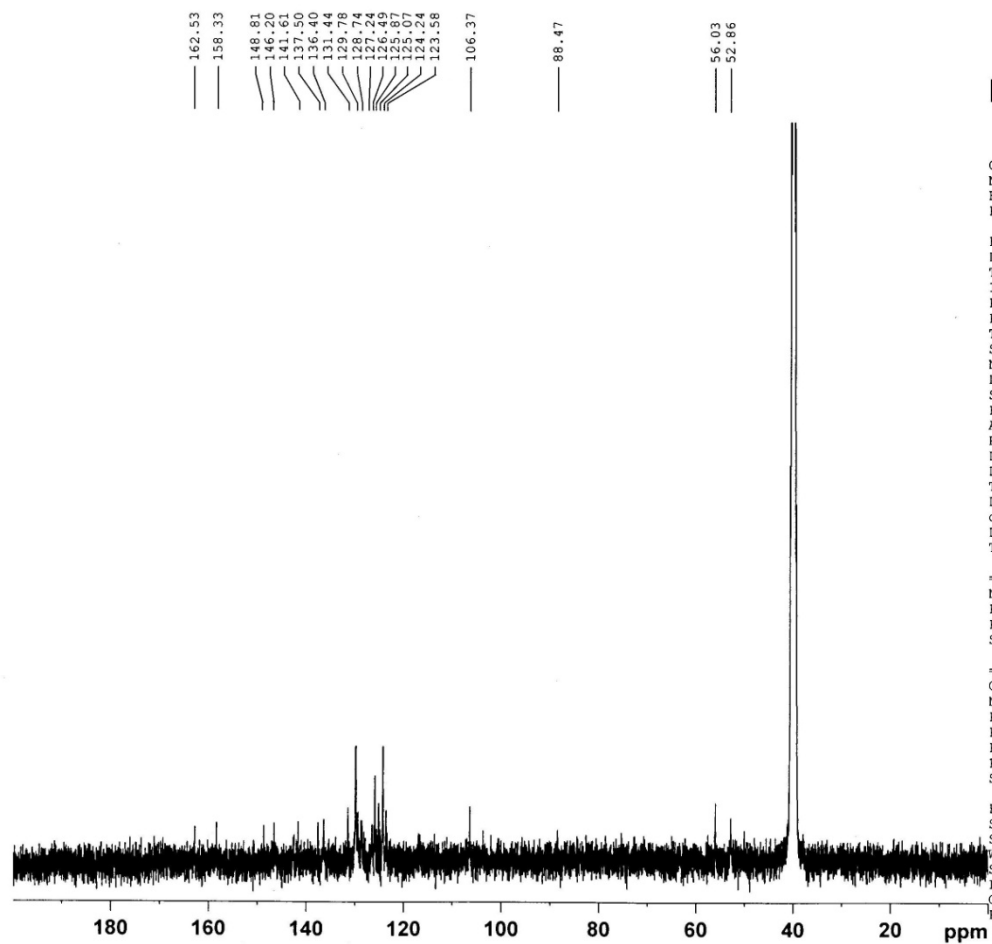
<sup>1</sup>H NMR of Compound 8h:



<sup>1</sup>H NMR of Compound 8i:



<sup>13</sup>C NMR of Compound 8i



Current Data Parameters  
NAME MPP  
EXPNO 106  
PROCNO 1

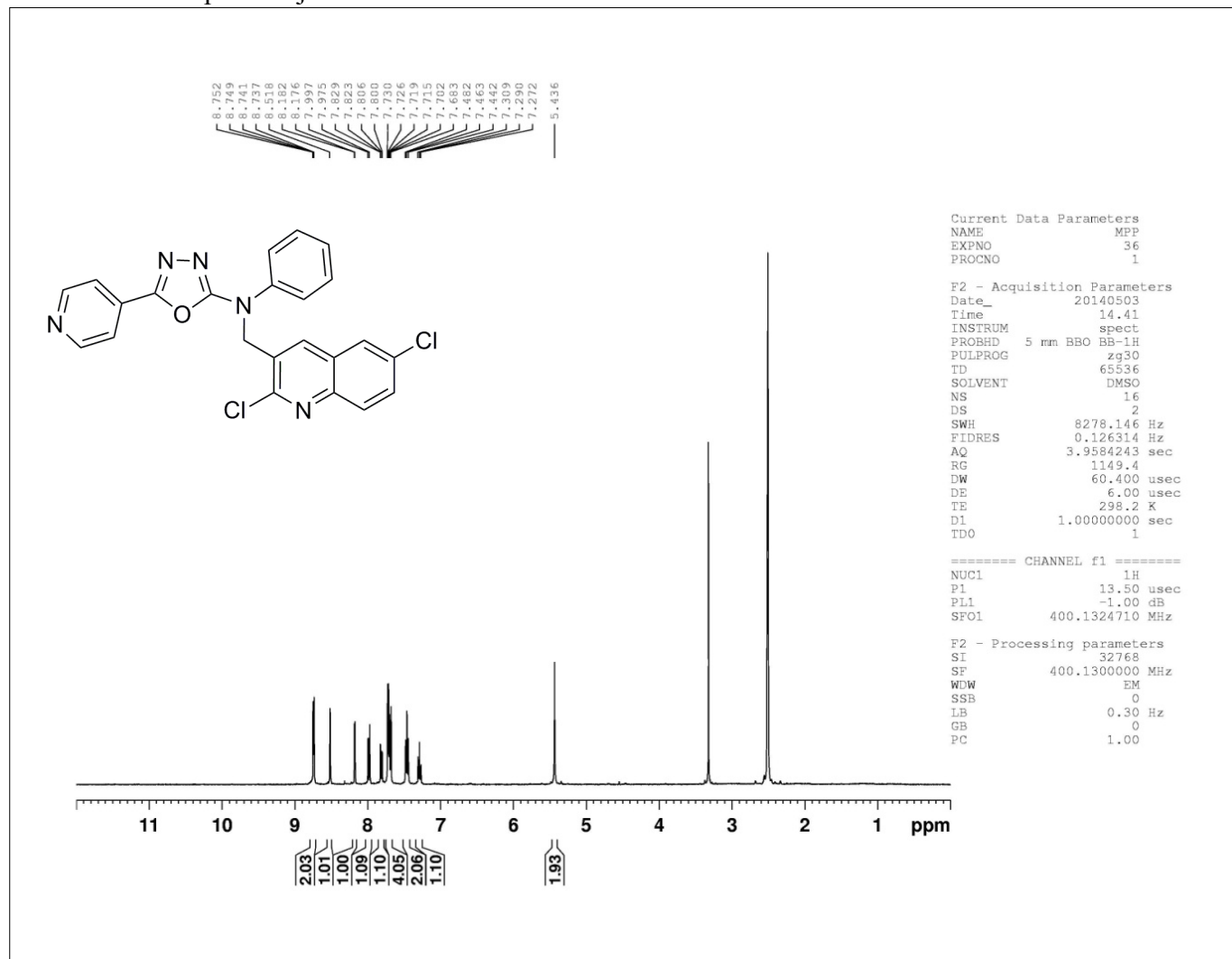
F2 - Acquisition Parameters  
Date\_ 20140711  
Time\_ 15.21  
INSTRUM spect  
PROBHD 5 mm BBO BB-1H  
PULPROG zgpg30  
TD 65536  
SOLVENT DMSO  
NS 1024  
DS 4  
SWH 23980.814 Hz  
FIDRES 0.365918 Hz  
AQ 1.3664756 sec  
RG 7298.2  
DW 20.850 usec  
DE 6.00 usec  
TE 296.8 K  
D1 2.00000000 sec  
d11 0.03000000 sec  
DELTA 1.89999998 sec  
TD0 1

===== CHANNEL f1 =====  
NUC1 13C  
P1 14.00 usec  
PL1 -4.00 dB  
SFO1 100.6228298 MHz

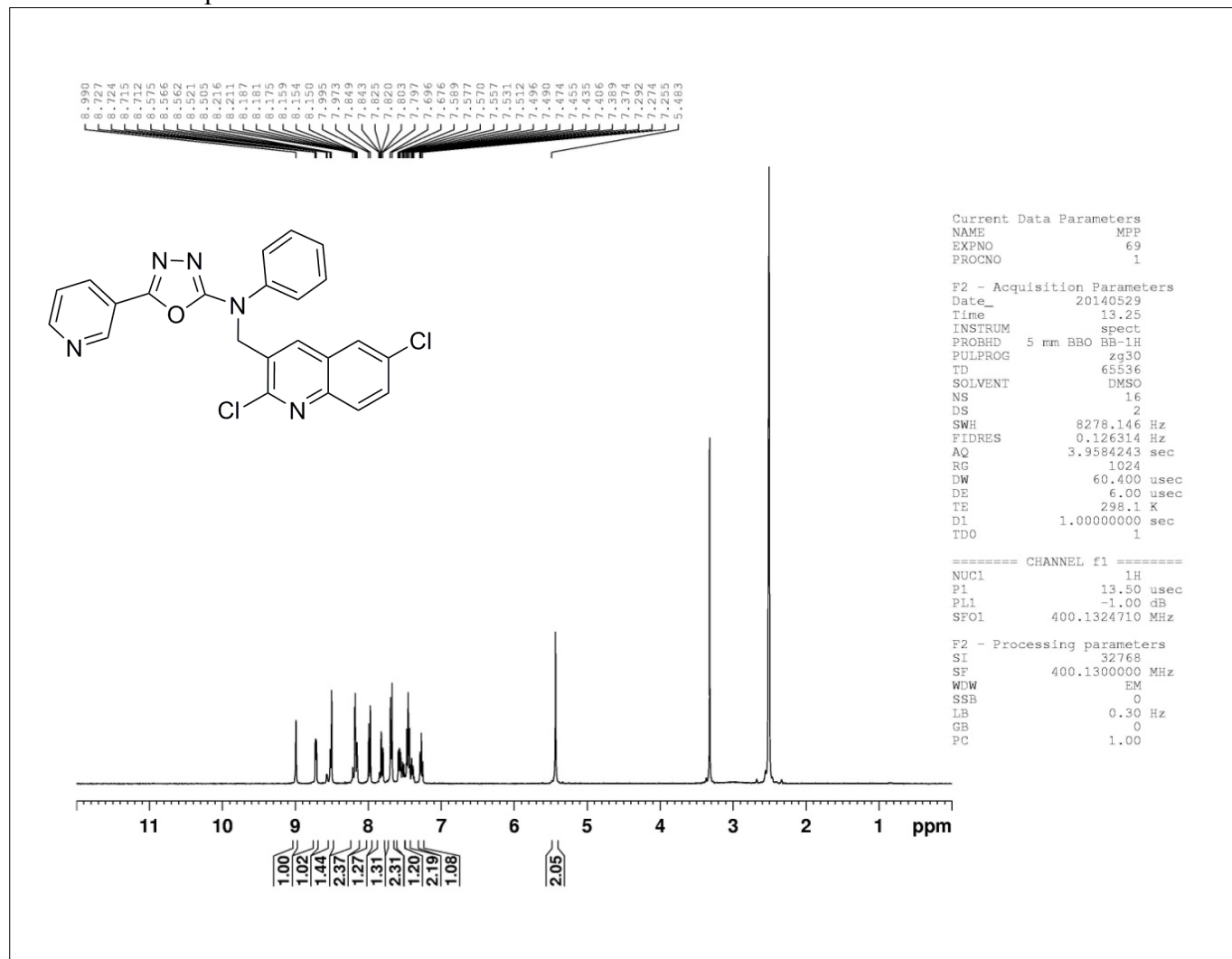
===== CHANNEL f2 =====  
CPDPRG2 waltz16  
NUC2 1H  
PCPD2 80.00 usec  
PL2 -1.00 dB  
PL12 14.46 dB  
PL13 15.00 dB  
SFO2 400.1316005 MHz

F2 - Processing parameters  
SI 32768  
SF 100.6127690 MHz  
WDW EM  
SSB 0  
LB 1.00 Hz  
GB 0  
PC 1.40

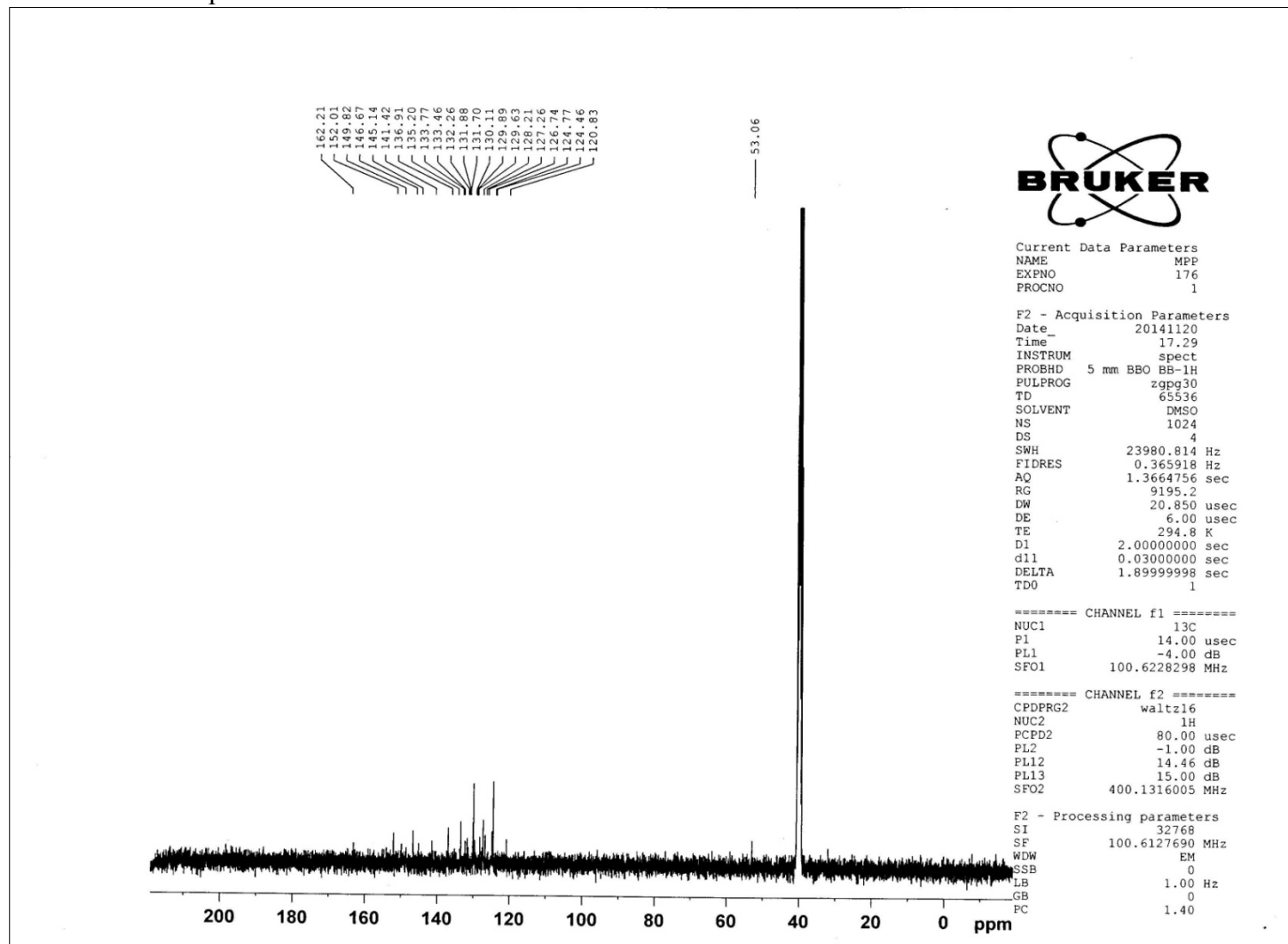
<sup>1</sup>H NMR of Compound 8j:



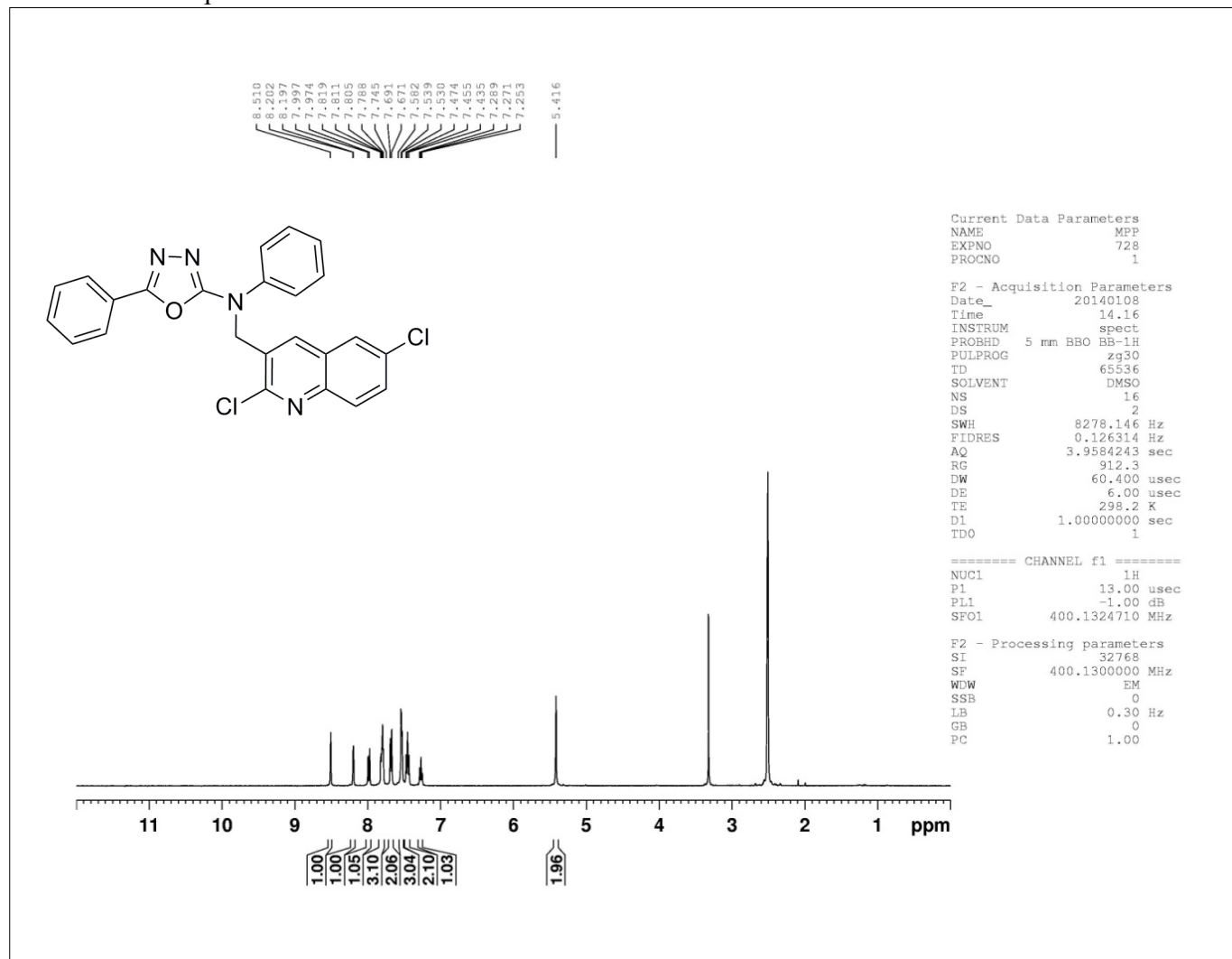
<sup>1</sup>H NMR of Compound 8k:



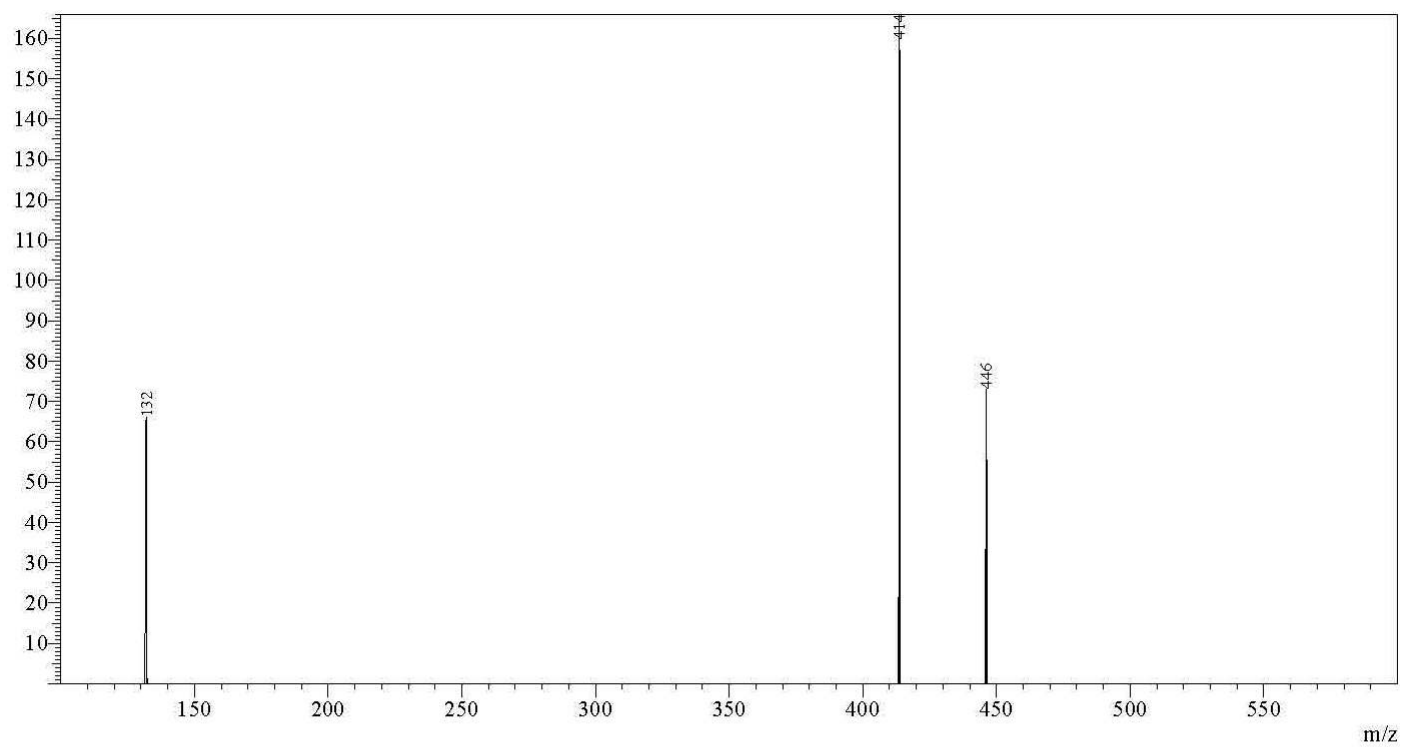
<sup>13</sup>C NMR of Compound 8k



<sup>1</sup>H NMR of Compound 8l:



## Mass of Compound 8a



MS Spectrum

Line#:1 R.Time:---(Scan#:---)

MassPeaks:3

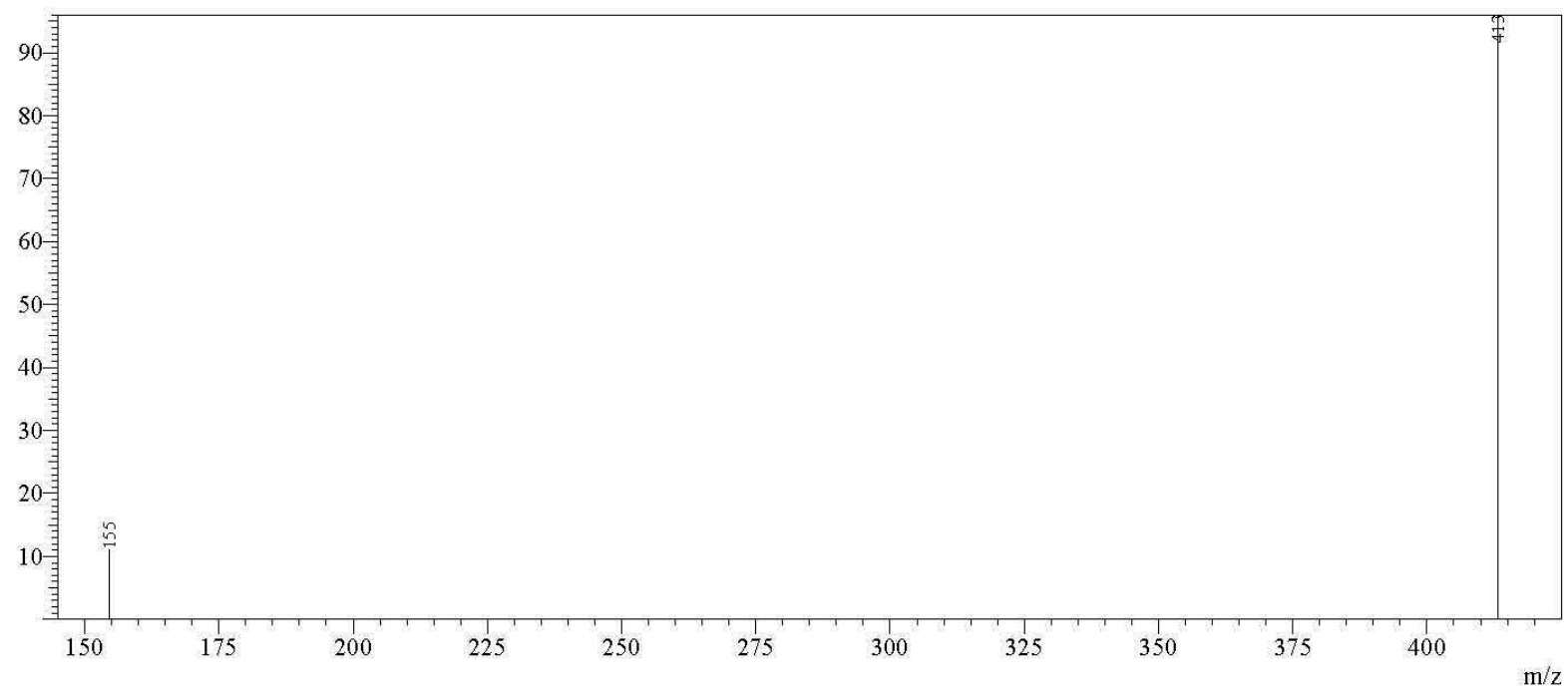
Spectrum Mode:Averaged 1.000-1.233(61-75) Base Peak:414(166)

BG Mode:None Segment 1 - Event 1

Precursor Ion Scan:m/z 413.85

Sr. No.	m/z	Absolute Intensity	Relative Intensity
1	131.90	66	39.76
2	413.70	166	100.00
3	446.20	73	43.98

# Mass of Compound 8b



MS Spectrum

Line#:1 R.Time:----(Scan#:----)

MassPeaks:2

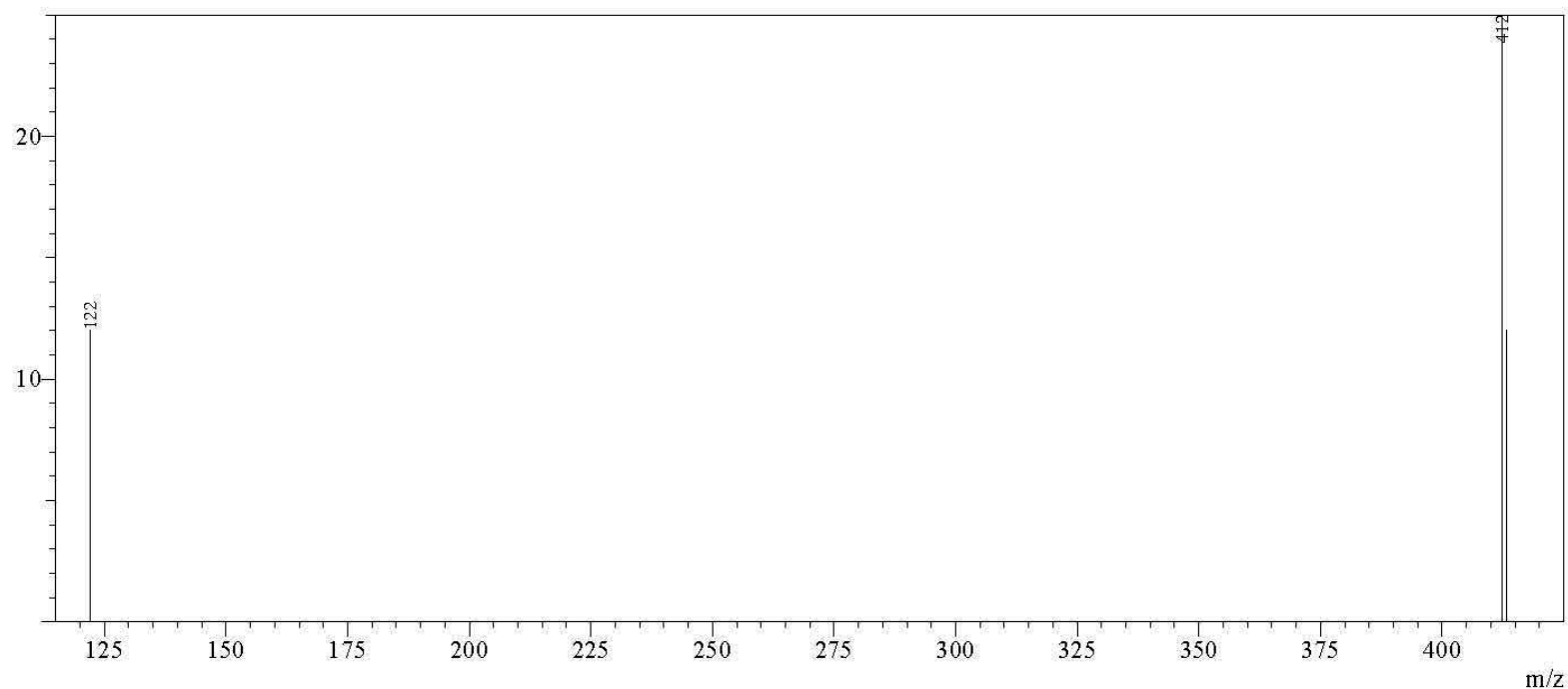
Spectrum Mode:Averaged 0.483-0.767(30-47) Base Peak:413(96)

BG Mode:None Segment 1 - Event 1

Precursor Ion Scan:m/z 413.50

Sr. No.	m/z	Absolute Intensity	Relative Intensity
1	154.60	11	11.46
2	413.20	96	100.00

# Mass of Compound 8c



MS Spectrum

Line#:1 R.Time:----(Scan#:----)

MassPeaks:3

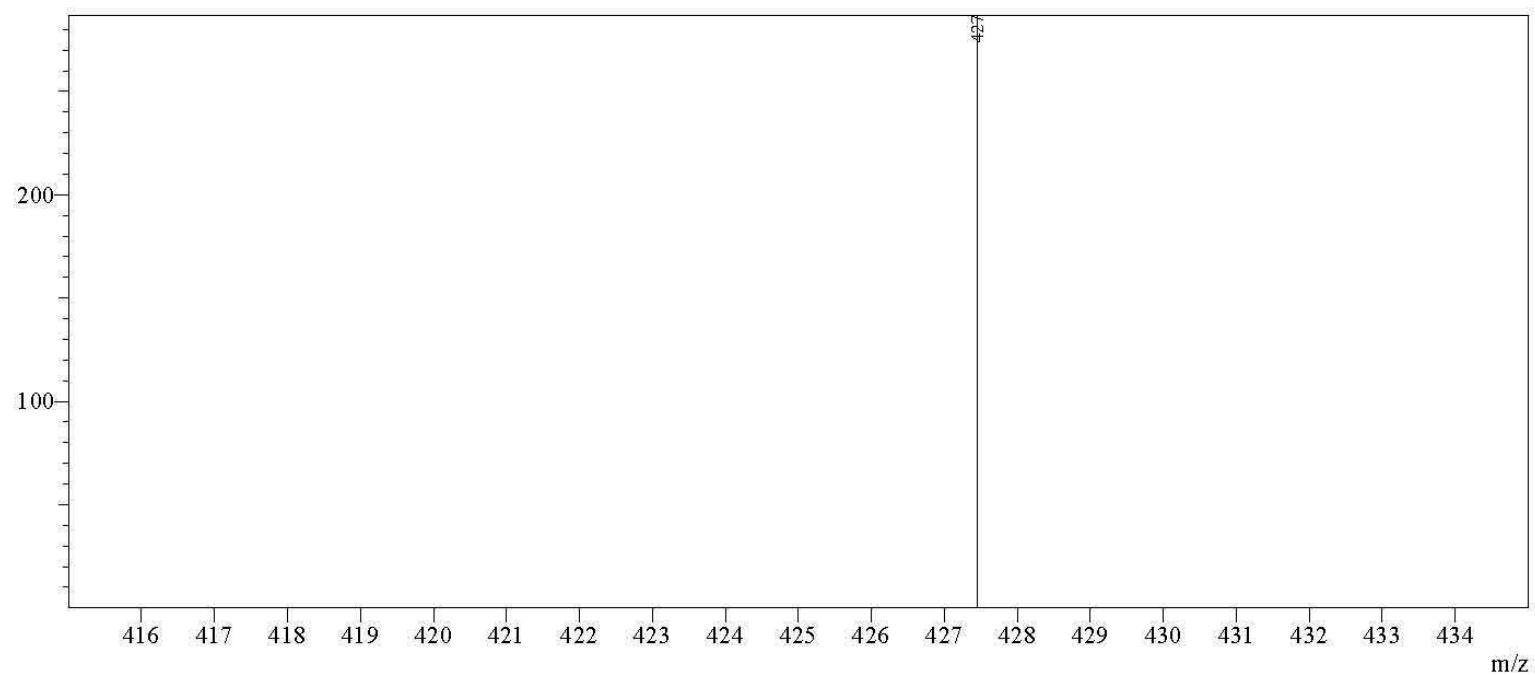
Spectrum Mode:Averaged 0.300-1.600(19-97) Base Peak:412(25)

BG Mode:None Segment 1 - Event 1

Precursor Ion Scan:m/z 412.50

Sr. No.	m/z	Absolute Intensity	Relative Intensity
1	122.10	12	48.00
2	412.30	25	100.00
3	413.30	12	48.00

# Mass of Compound 8d



MS Spectrum

Line#:1 R.Time:---(Scan#:----)

MassPeaks:1

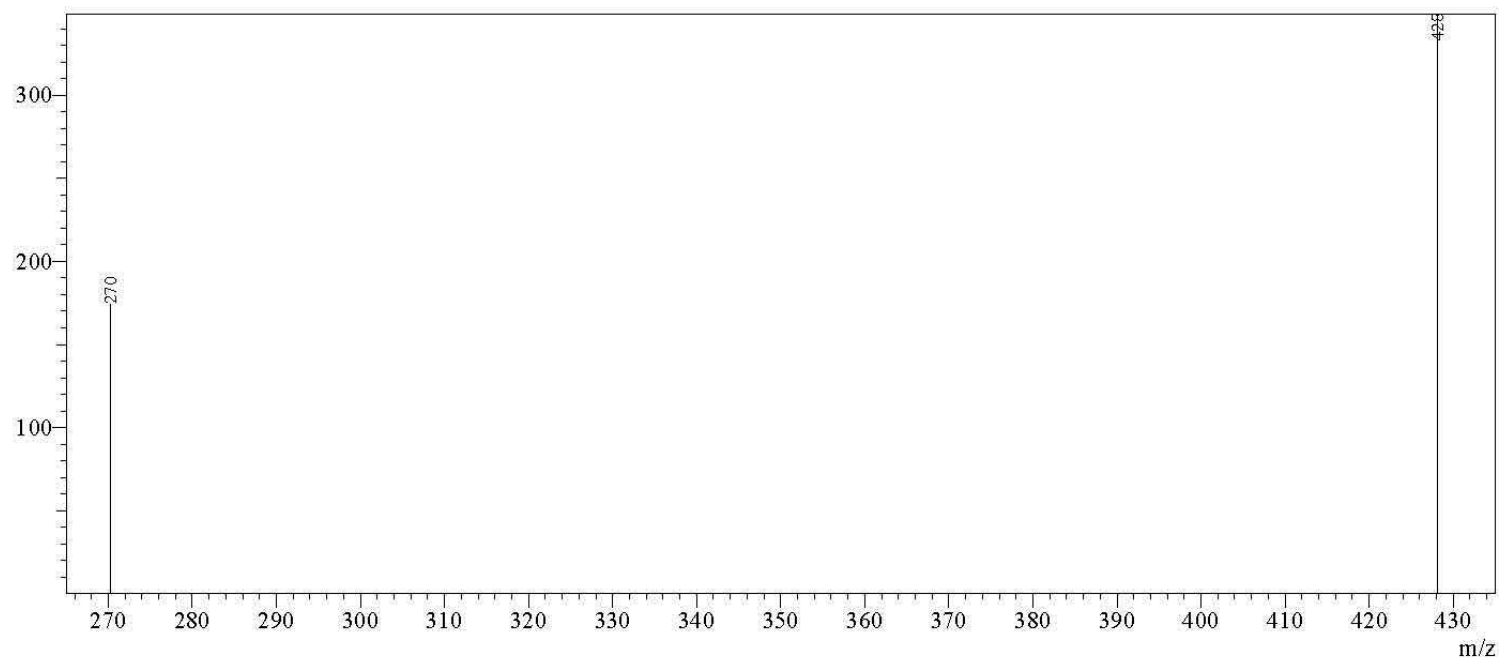
Spectrum Mode:Averaged 0.450-1.017(28-62) Base Peak:427(291)

BG Mode:None Segment 1 - Event 1

Precursor Ion Scan:m/z 427.50

Sr. No.	m/z	Absolute Intensity	Relative Intensity
1	427.45	287	100.00

# Mass of Compound 8e



MS Spectrum

Line#:1 R. Time:---(Scan#:---)

MassPeaks:2

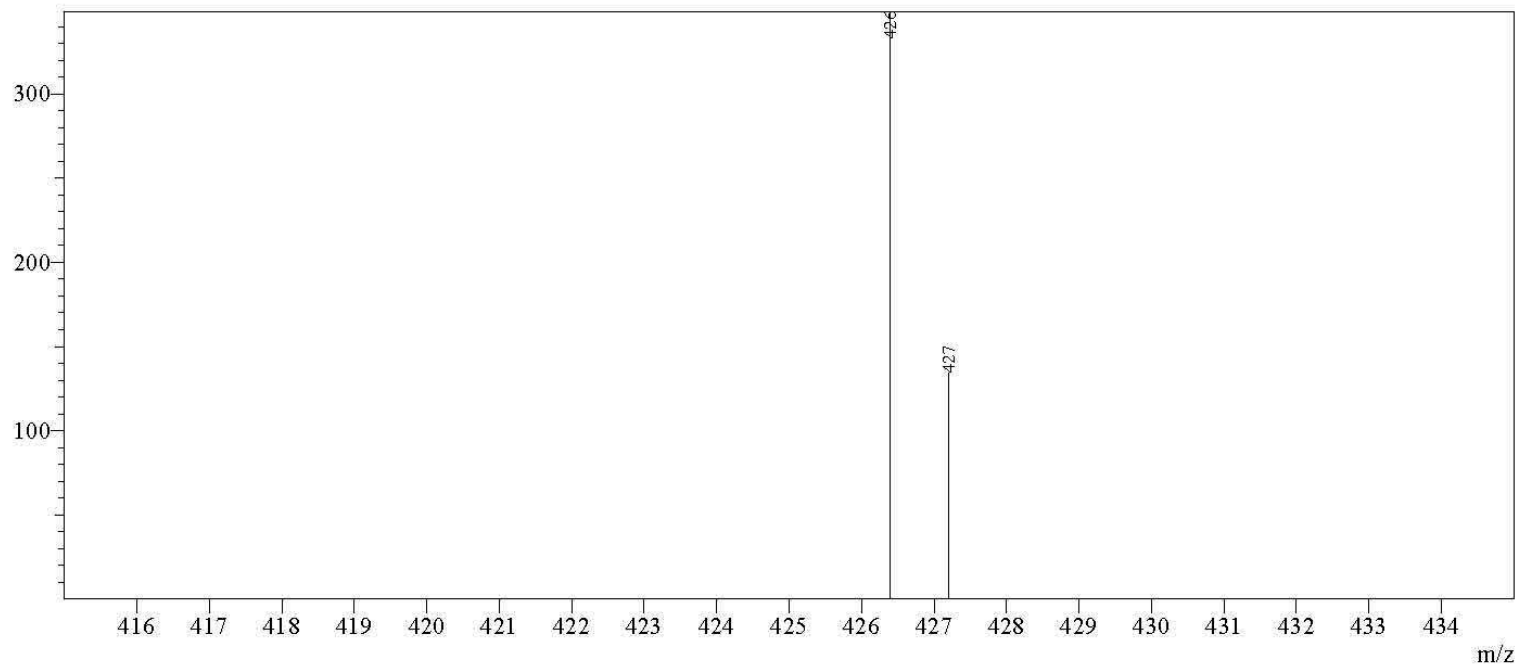
Spectrum Mode:Averaged 1.350-1.500(82-91) Base Peak:428(349)

BG Mode:None Segment 1 - Event 1

Precursor Ion Scan:m/z 427.50

Sr. No.	m/z	Absolute Intensity	Relative Intensity
1	270.20	174	49.86
2	428.10	349	100.00

# Mass of Compound 8f



MS Spectrum

Line#:1 R.Time:---(Scan#;----)

MassPeaks:2

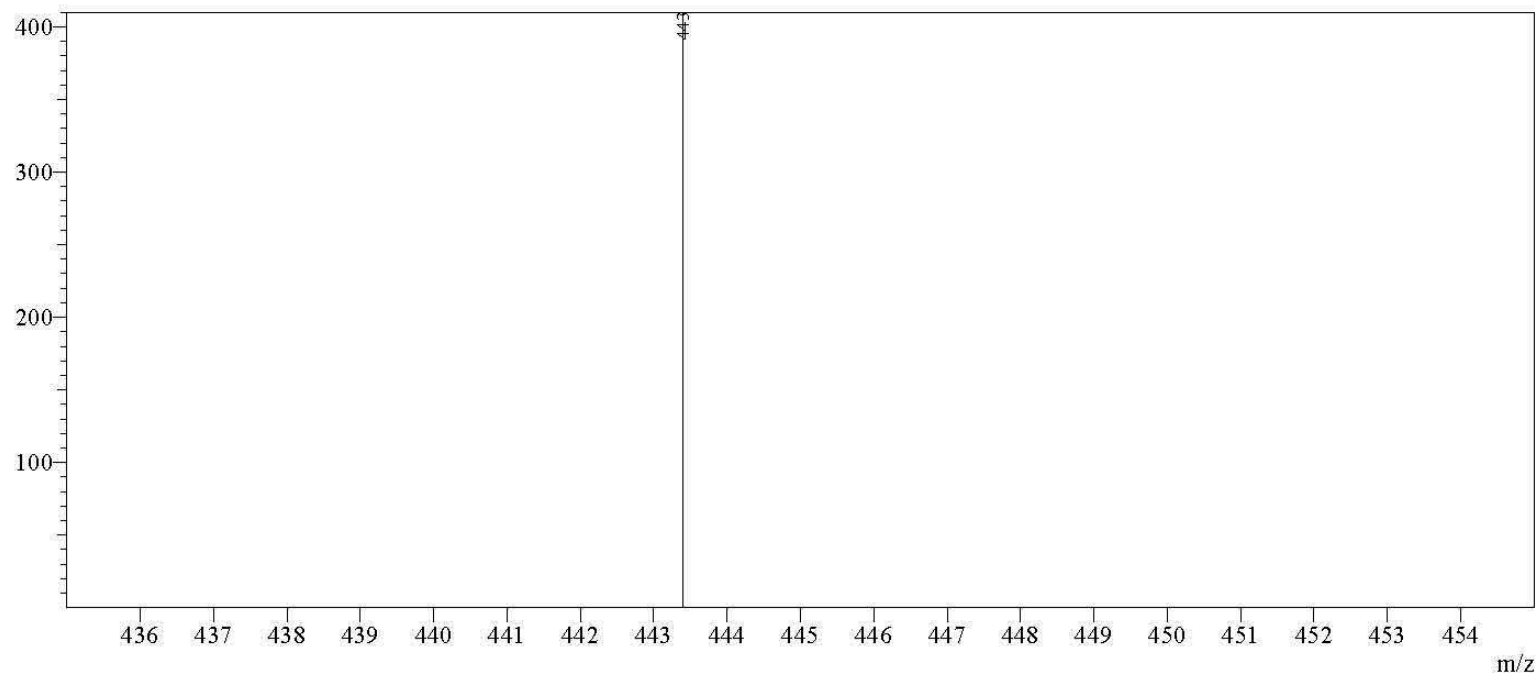
Spectrum Mode:Averaged 0.183-0.383(12-24) Base Peak:426(349)

BG Mode:None Segment 1 - Event 1

Precursor Ion Scan:m/z 426.50

Sr. No.	m/z	Absolute Intensity	Relative Intensity
1	426.40	349	100.00
2	427.20	134	38.40

Mass of Compound 8g



MS Spectrum

Line#:1 R.Time:---(Scan#:-)

MassPeaks:1

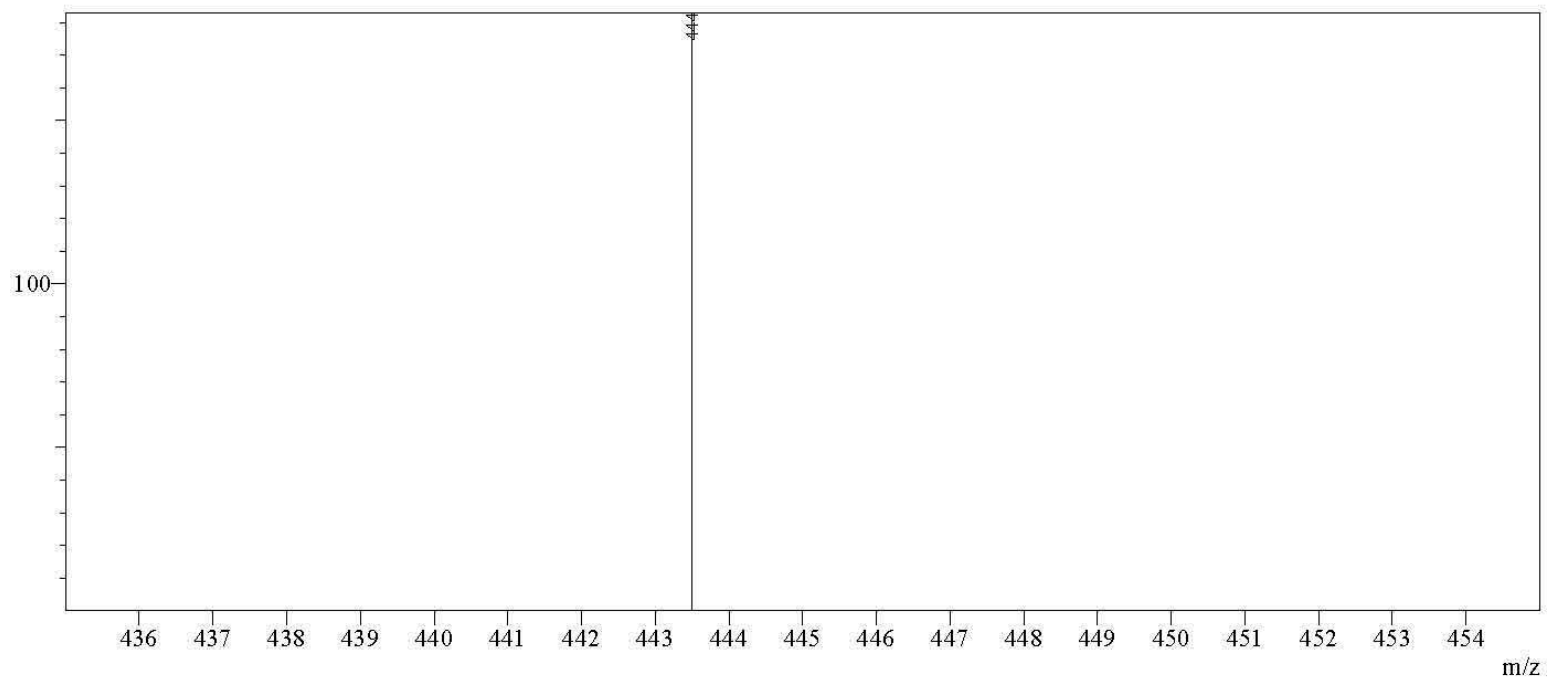
Spectrum Mode:Averaged 0.067-0.183(5-12) Base Peak:443(427)

BG Mode:None Segment 1 - Event 1

Precursor Ion Scan:m/z 443.50

Sr. No.	m/z	Absolute Intensity	Relative Intensity
1	443.40	410	100.00

# Mass of Compound 8h



MS Spectrum

Line#:1 R.Time:---(Scan#:----)

MassPeaks:1

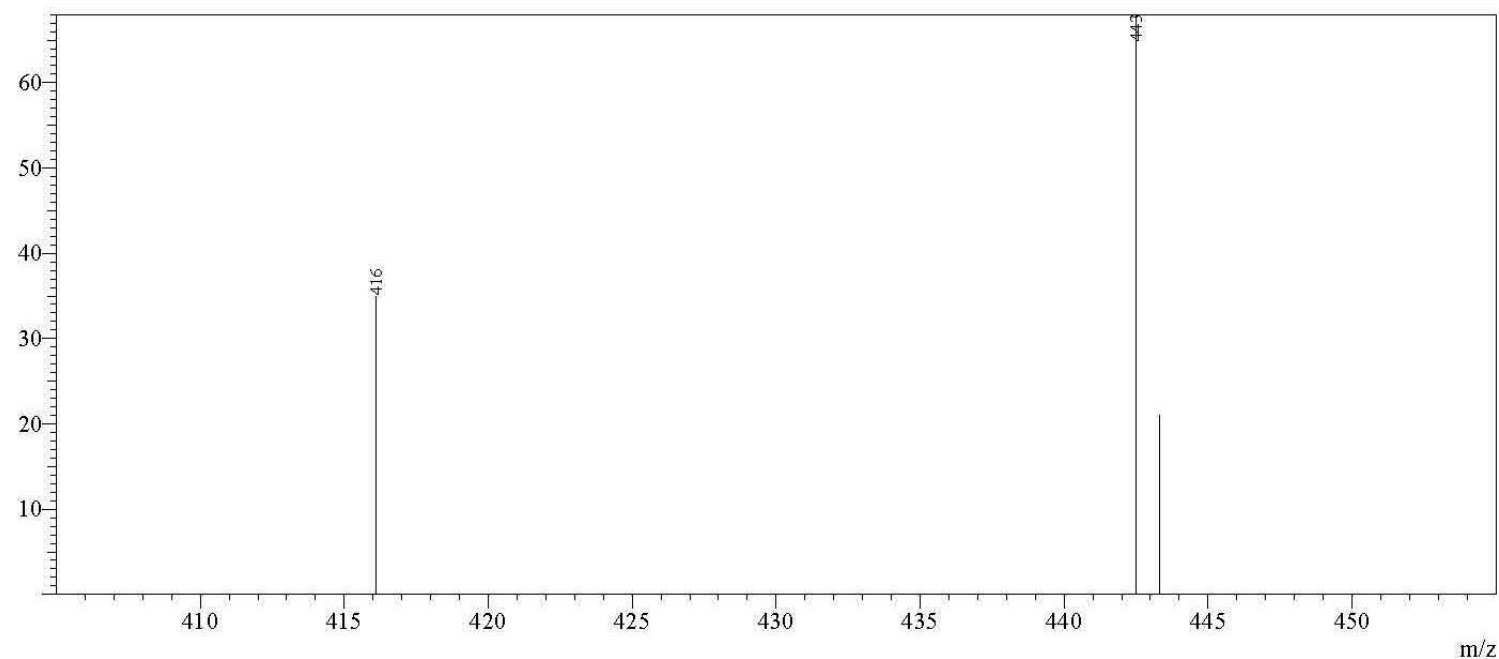
Spectrum Mode:Averaged 1.350-1.500(82-91) Base Peak:444(183)

BG Mode:None Segment 1 - Event 1

Precursor Ion Scan:m/z 443.50

Sr. No.	m/z	Absolute Intensity	Relative Intensity
1	443.50	183	100.00

# Mass of Compound 8i



MS Spectrum

Line#:1 R.Time:----(Scan#:----)

MassPeaks:3

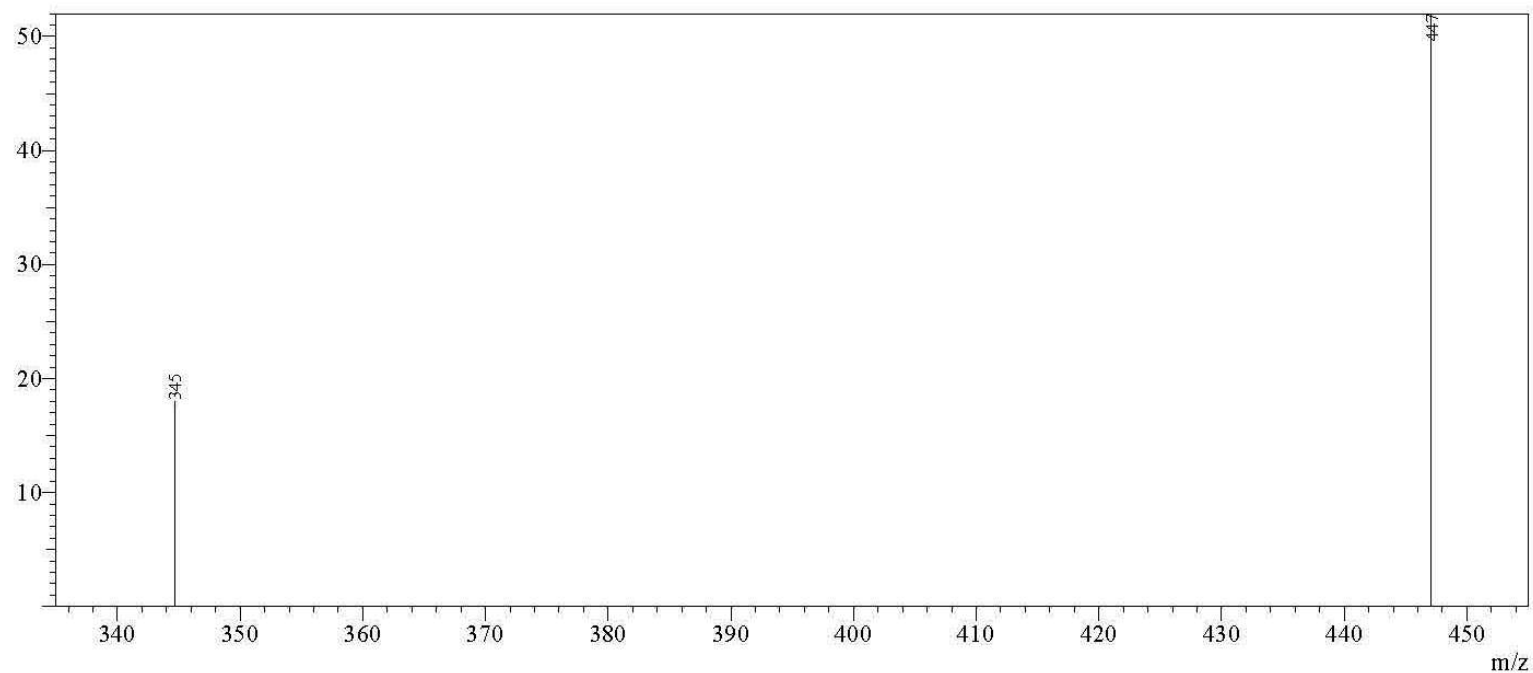
Spectrum Mode:Averaged 0.333-1.967(21-119) Base Peak:443(68)

BG Mode:None Segment 1 - Event 1

Precursor Ion Scan:m/z 442.50

Sr. No.	m/z	Absolute Intensity	Relative Intensity
1	416.10	35	51.47
2	442.50	68	100.00
3	443.30	21	30.88

# Mass of Compound 8j



MS Spectrum

Line#:1 R.Time:----(Scan#:----)

MassPeaks:2

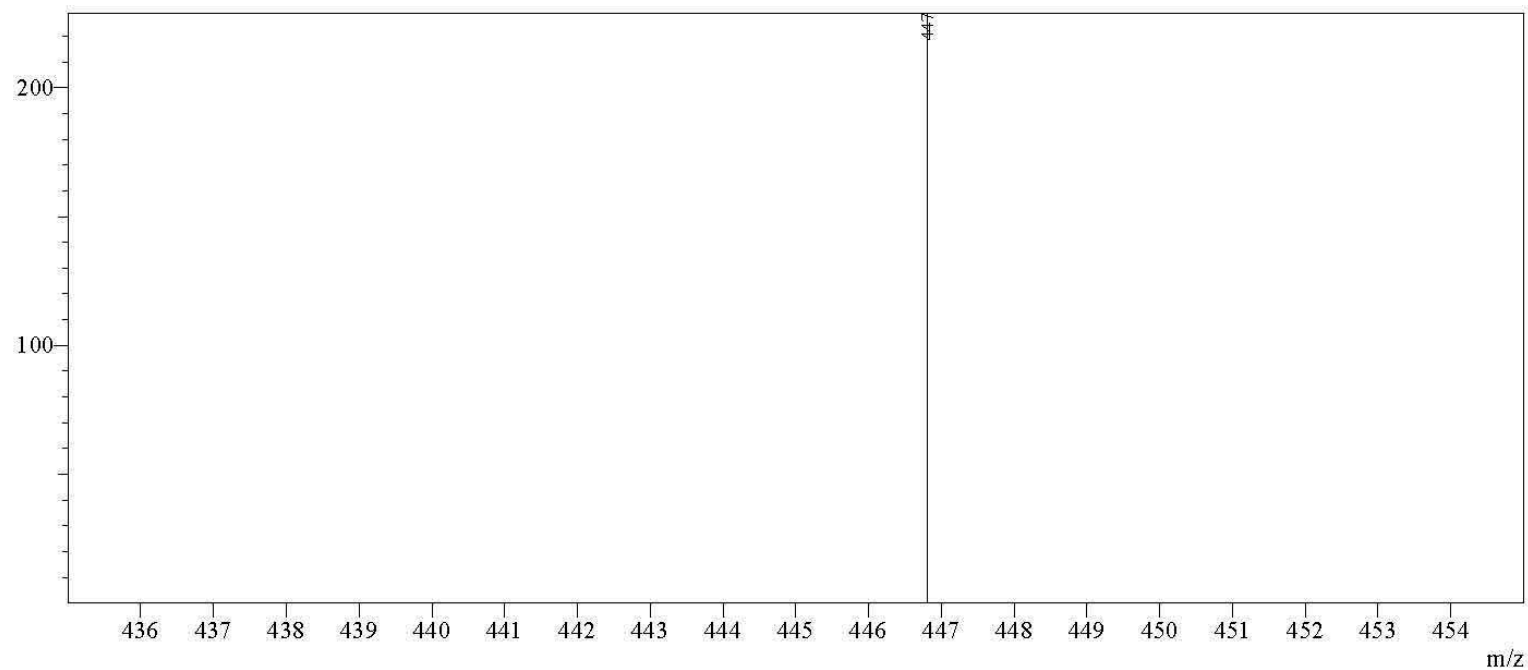
Spectrum Mode:Averaged 0.267-1.933(17-117) Base Peak:447(52)

BG Mode:None Segment 1 - Event 1

Precursor Ion Scan:m/z 447.00

Sr. No.	m/z	Absolute Intensity	Relative Intensity
1	344.70	18	34.62
2	447.10	52	100.00

# Mass of Compound 8k



MS Spectrum

Line#:1 R.Time:----(Scan#----)

MassPeaks:1

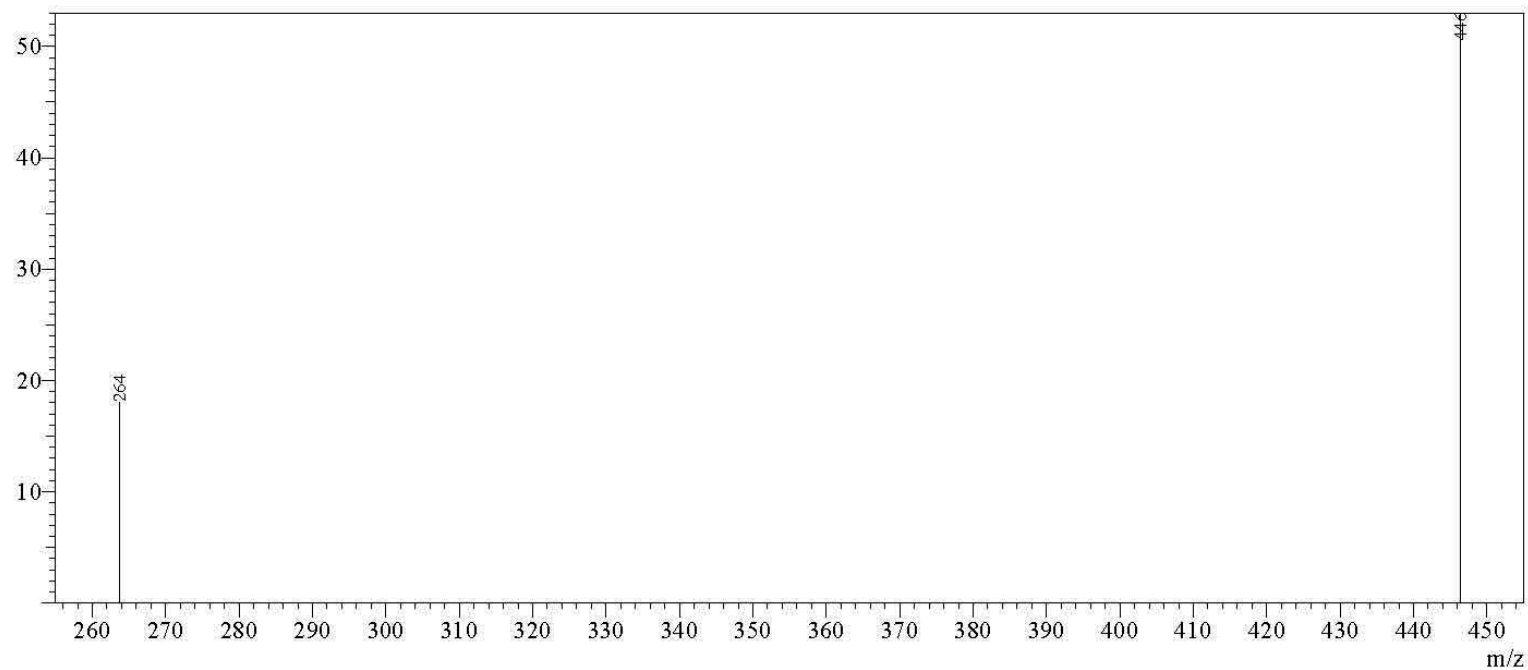
Spectrum Mode:Averaged 1.833-1.950(111-118) Base Peak:447(229)

BG Mode:None Segment 1 - Event 1

Precursor Ion Scan:m/z 447.00

Sr. No.	m/z	Absolute Intensity	Relative Intensity
1	446.80	229	100.00

# Mass of Compound 8l



MS Spectrum

Line#:1 R.Time:----(Scan#----)

MassPeaks:2

Spectrum Mode:Averaged 0.167-1.000(11-61) Base Peak:446(53)

BG Mode:None Segment 1 - Event 1

Precursor Ion Scan:m/z 446.00

Sr. No.	m/z	Absolute Intensity	Relative Intensity
1	263.70	18	33.96
2	446.40	53	100.00