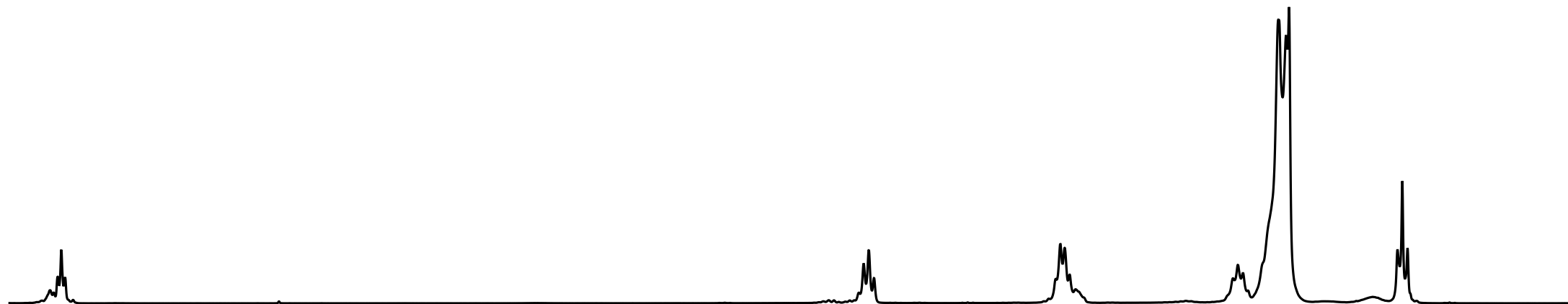
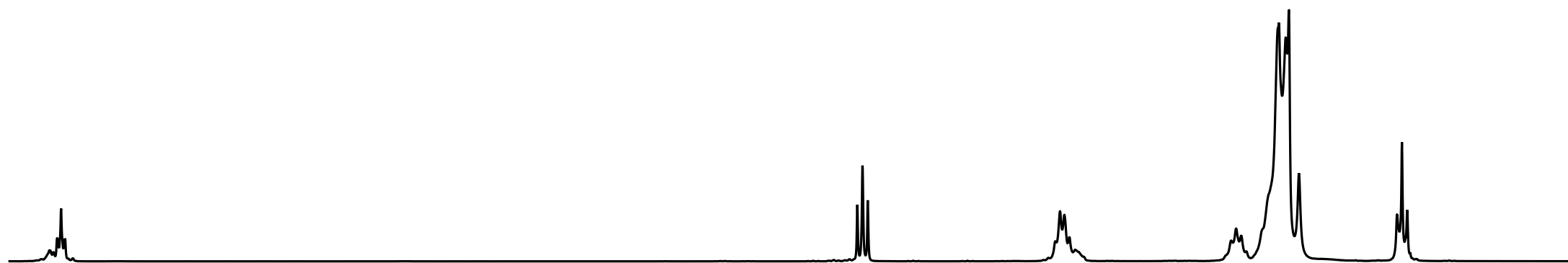


Zimd006.700.1.1r
Zimd006 - 1H - NMR - CDCl3 - T=300K 2



Zimd004.700.1.1r
Zimd004 - 1H - NMR - CDCl3 - T=300K 1



5.4 5.2 5.0 4.8 4.6 4.4 4.2 4.0 3.8 3.6 3.4 3.2 3.0 2.8 2.6 2.4 2.2 2.0 1.8 1.6 1.4 1.2 1.0 0.8 0.6 0.4
f1 (ppm)