

Supplementary information

Naked eye sensing of Melamine: Aggregation induced recognition by Sodium D-gluconate stabilised Silver Nanoparticles

Palanichamy Kaleeswaran,^a Thanasekaran Nandhini,^a Kasi Pitchumani^{a,b*}

^a*School of Chemistry, Madurai Kamaraj University, Madurai-625 021, India.*

^b*Centre for green Chemistry Processes, School of Chemistry, Madurai Kamaraj University, Madurai – 625 021.*

E-mail: pit12399@yahoo.com

CONTENTS

1. Fig. S1: The calibration curve between A_{555}/A_{405} and concentration of melamine
2. Fig. S2: HRTEM images of Sdglu-Ag NPs in presence of melamine (1×10^{-5} M)
3. Fig. S3: HRTEM images of Sdglu-Ag NPs in presence of melamine (1×10^{-6} M)
4. Fig. S4: HRTEM images of Sdglu-Ag NPs in presence of melamine (1×10^{-7} M)
5. Fig. S5: Absorbance ratio (A_{555}/A_{405}) of Sdglu-Ag NPs with melamine (3×10^{-5} M) in the presence of various analytes

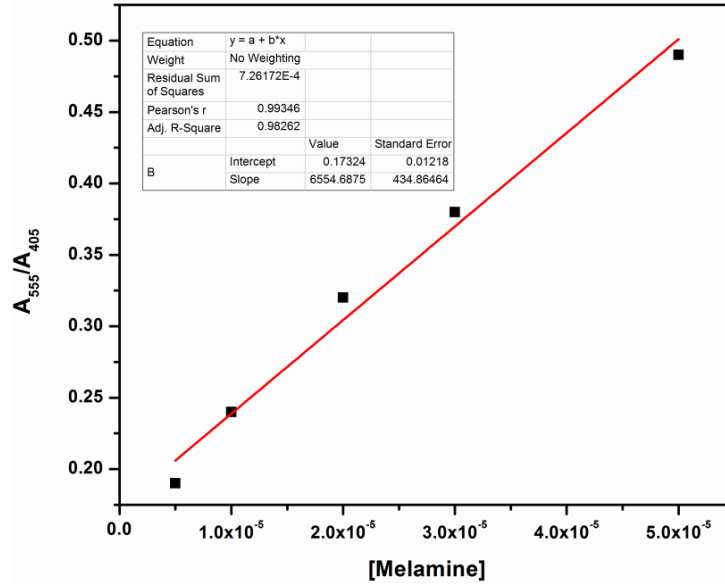


Fig. S1: The calibration curve between A_{555}/A_{405} and concentration of melamine

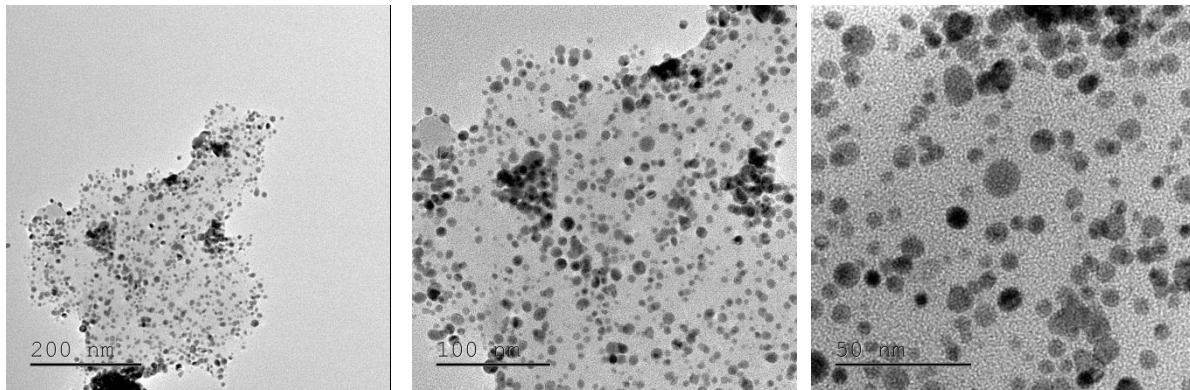


Fig. S2: HRTEM images of Sdglu-Ag NPs in presence of melamine (1×10^{-5} M)

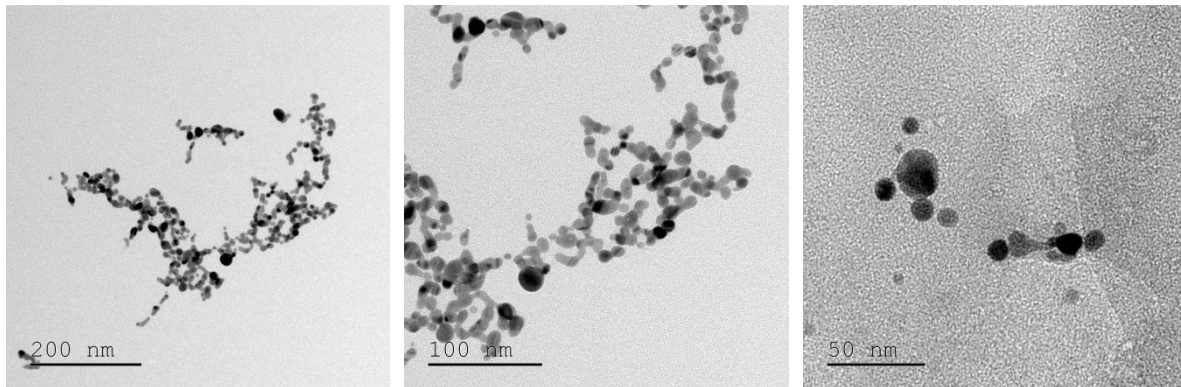


Fig. S3: HRTEM images of Sdglu-Ag NPs in presence of melamine (1×10^{-6} M)

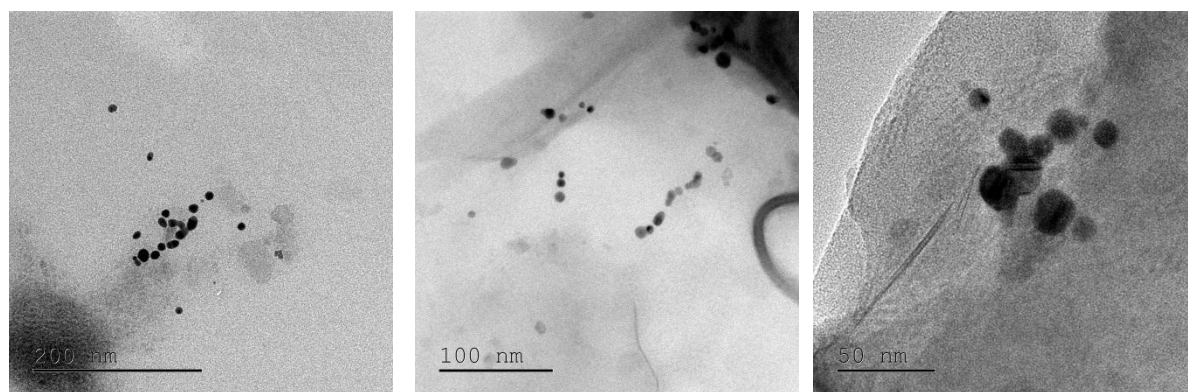


Fig. S4: HRTEM images of Sdglu-Ag NPs in presence of melamine (1×10^{-7} M)

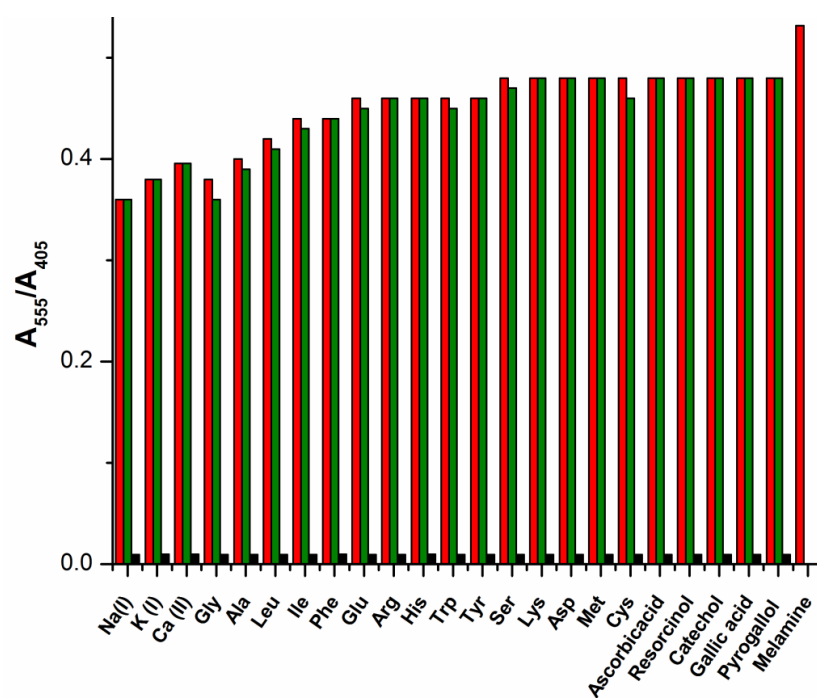


Fig. S5: Absorbance ratio (A_{555}/A_{405}) of Sdglu-Ag NPs with melamine (3×10^{-5} M) in the presence of various analytes [Black bar: various analytes in the absence of melamine; Red bar: various analytes in the presence of melamine (3×10^{-5} M); Green bar: various analytes in the presence of melamine (100 fold)]