

Supplementary Information

ZnO decorated with organic nanoparticles based sensor for ratiometric selective determination of mercury ions

Narinder Kaur,^{a†} Jasmininder Singh,^{b†} Pushap Raj^b, Narinder Singh,^{b*} Harpreet Singh,^c Sanjeev K. Sharma,^{a*} Deuk Young Kim,^a Navneet Kaur^{d,e*}

^aSemiconductor Materials and Device Laboratory, Department of Semiconductor Science, Dongguk University-Seoul, Seoul 100715, Republic of Korea

^bDepartment of Chemistry, Indian Institute of Technology (IIT) Ropar, Rupnagar, Panjab 140001, India. E-mail: nsingh@iitrpr.ac.in

^cSchool of Mechanical, Materials & Energy Engineering, IIT Ropar, Rupnagar, Punjab 140001, India

^dCentre for Nanoscience and Nanotechnology (UIEAST), Panjab University, Chandigarh, India, 160014.

^eDepartment of Chemistry, Panjab University, Chandigarh, India, 160014; E-mail: navneetkaur@pu.ac.in

[†]*Both authors contributed equally*

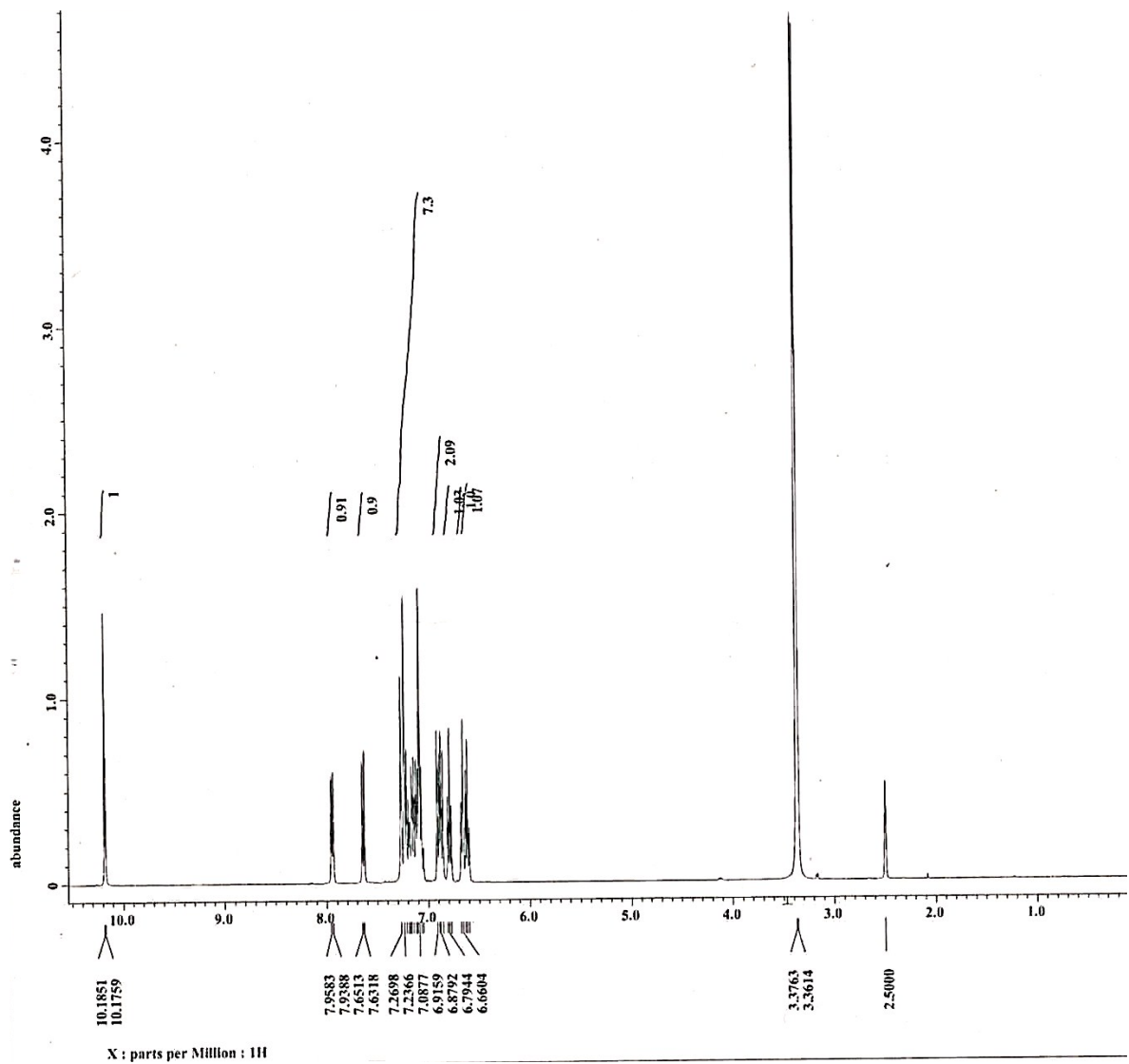


Figure S1: ^1H NMR of R1

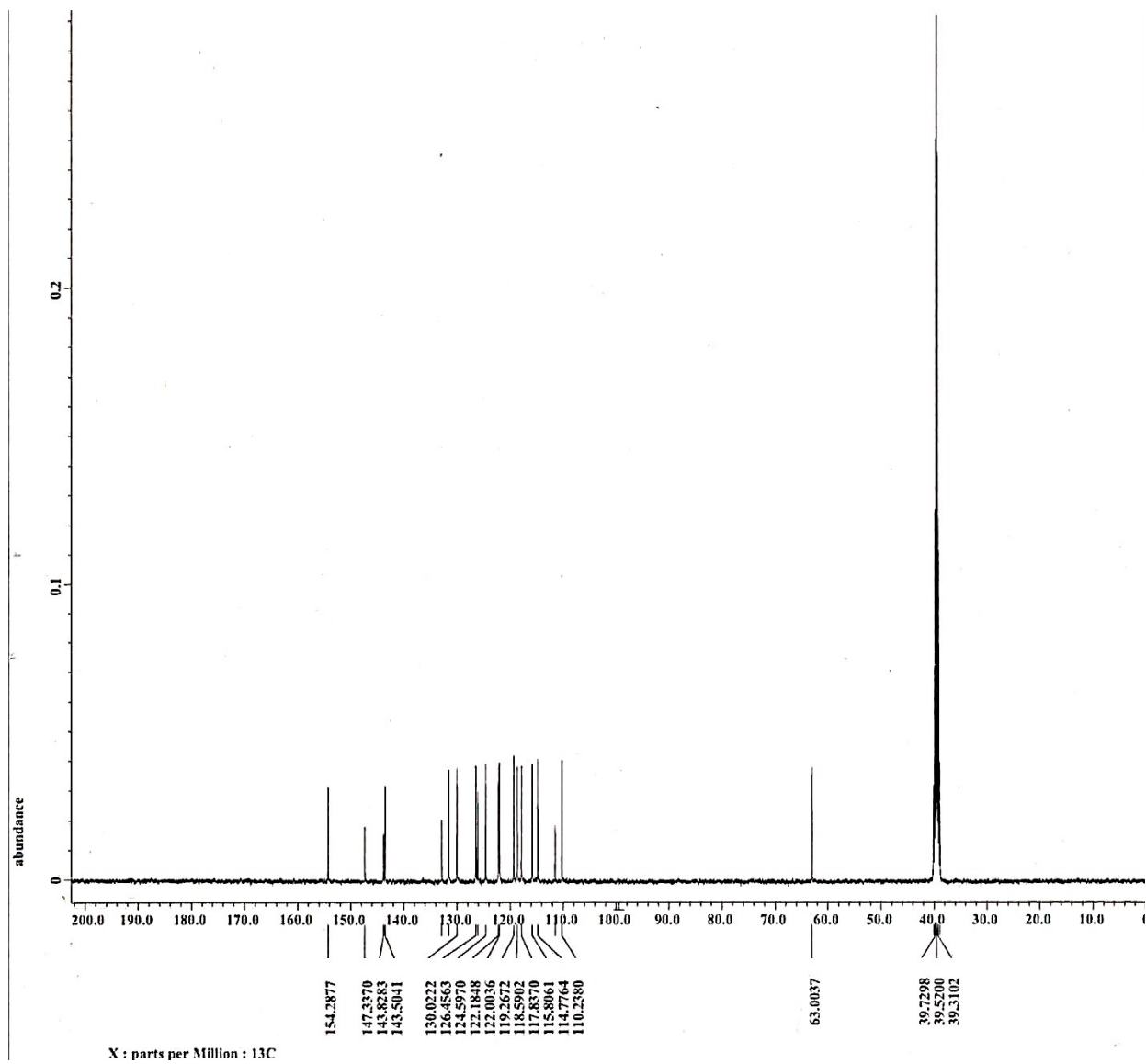


Figure S2: ^{13}C NMR of R1

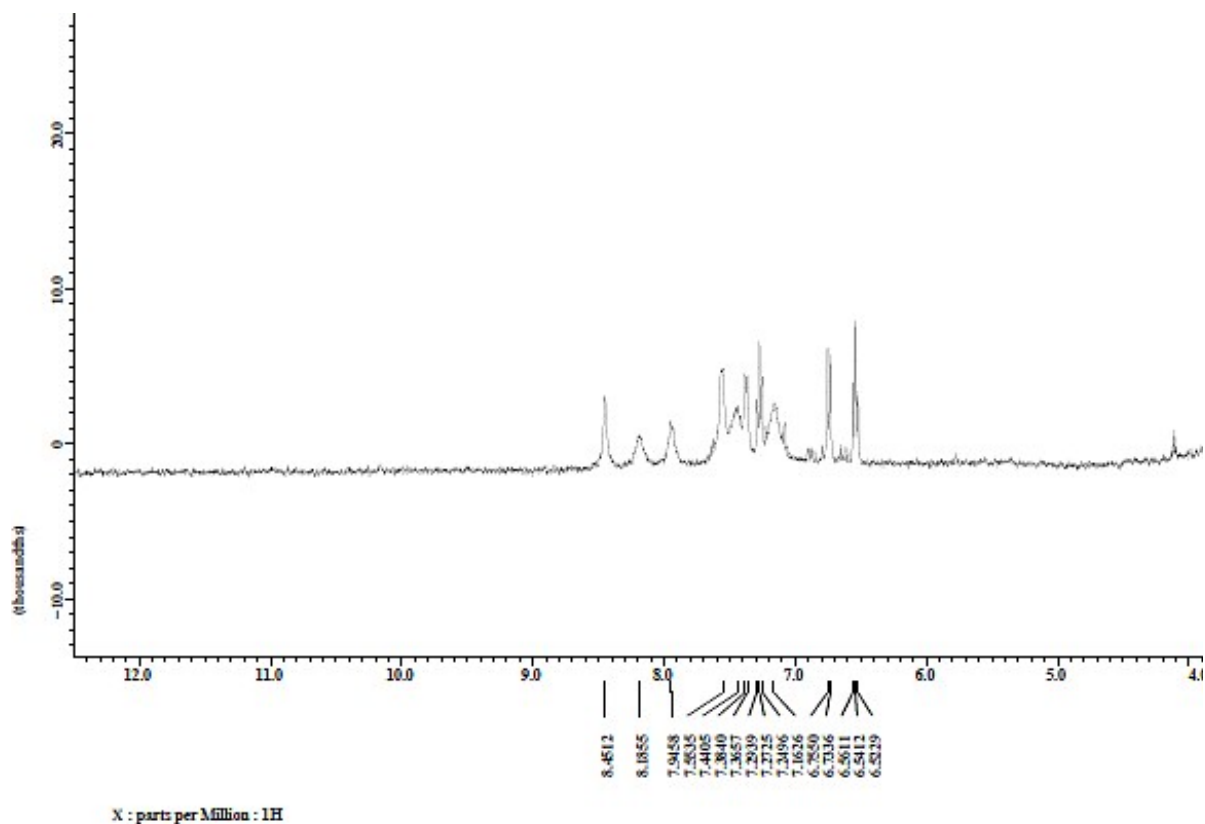


Figure S3: ^1H NMR of **R1** coated on surface of ZnO

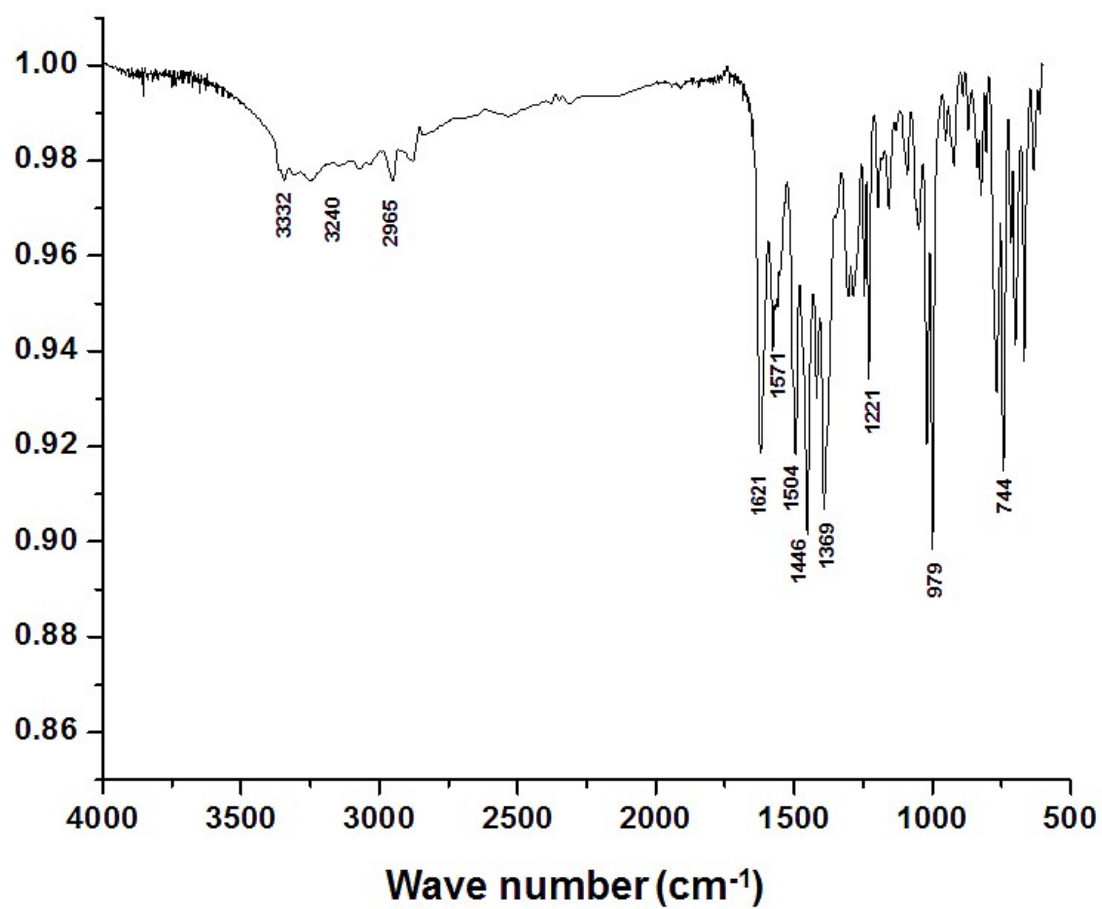


Figure S4 a: IR spectrum of **R1**

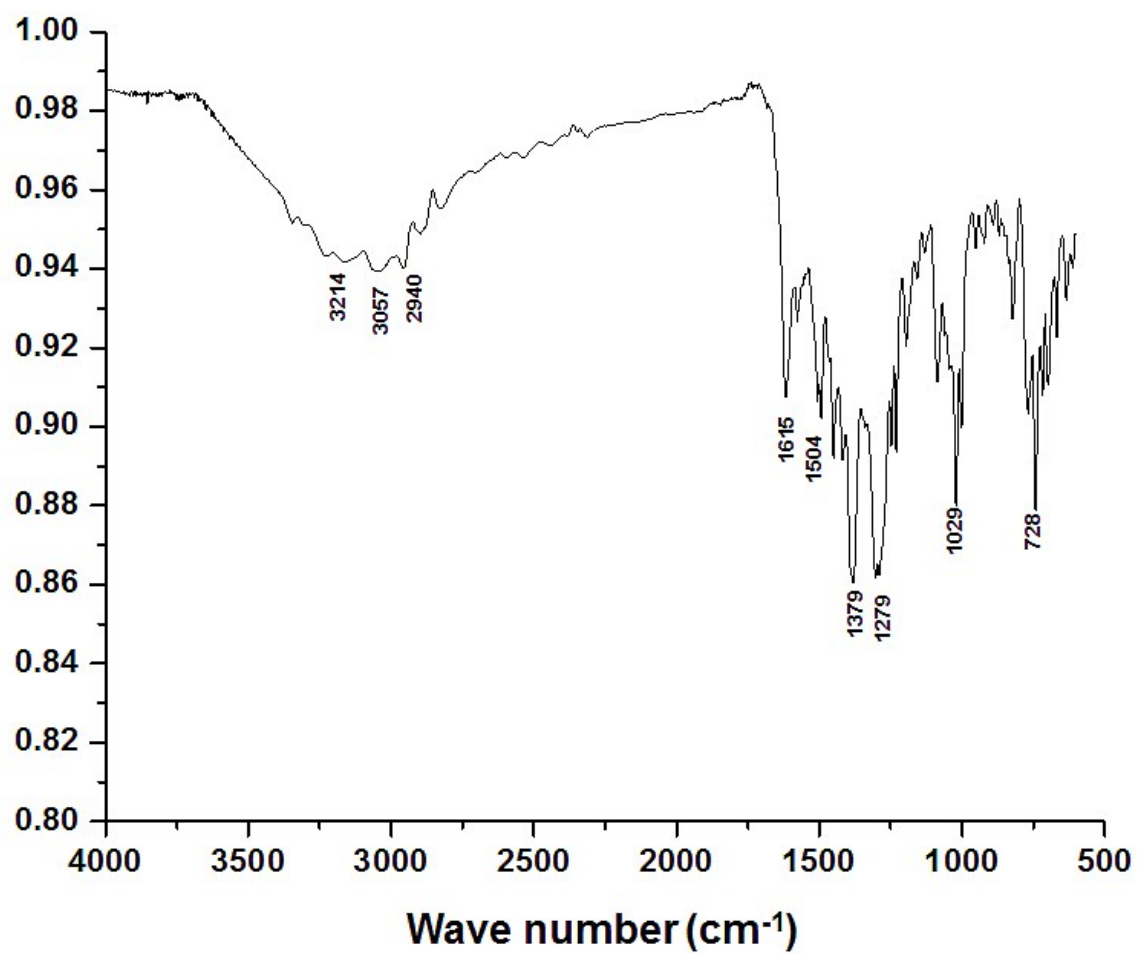


Figure S4 b: IR spectrum of **N1** i.e. **R1** coated on the surface of ZnO

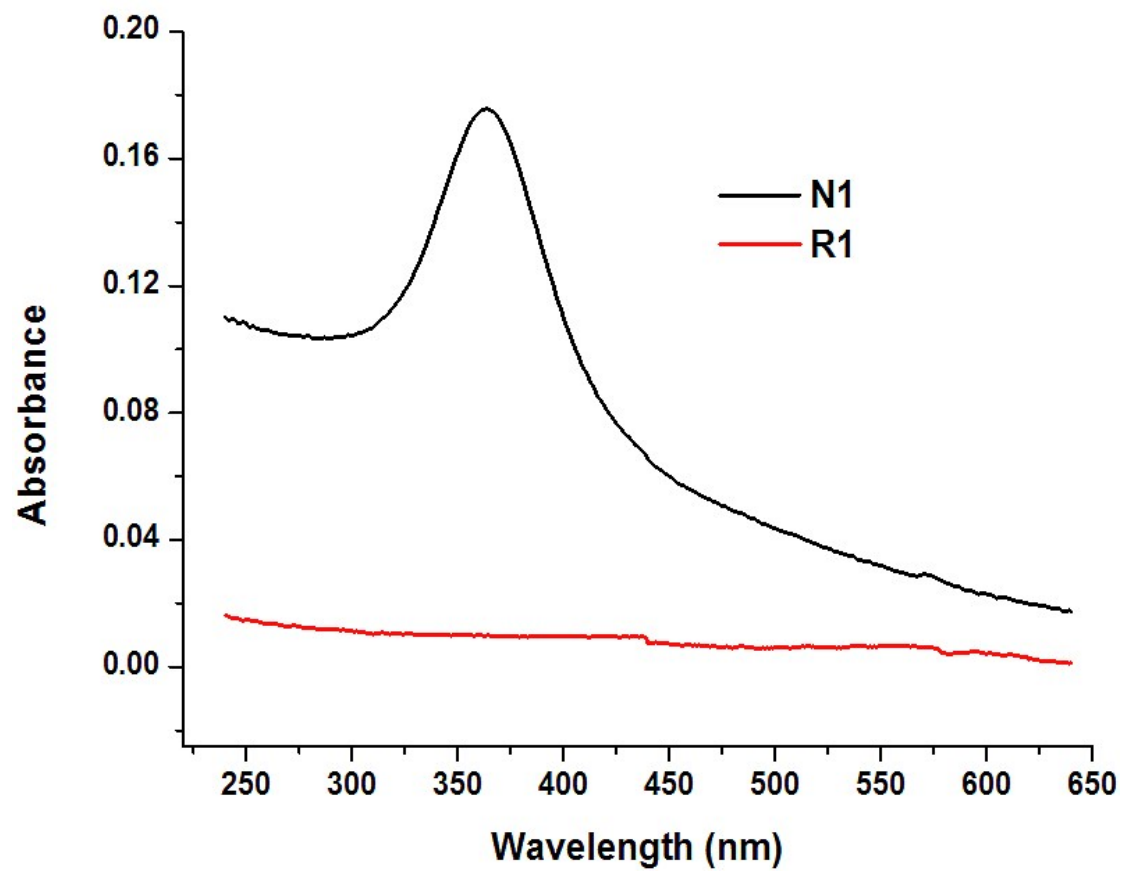


Figure S5: Comparison of absorption profile of prepared receptor (**R1**) and **R1** coated on surface of ZnO (**N1**)

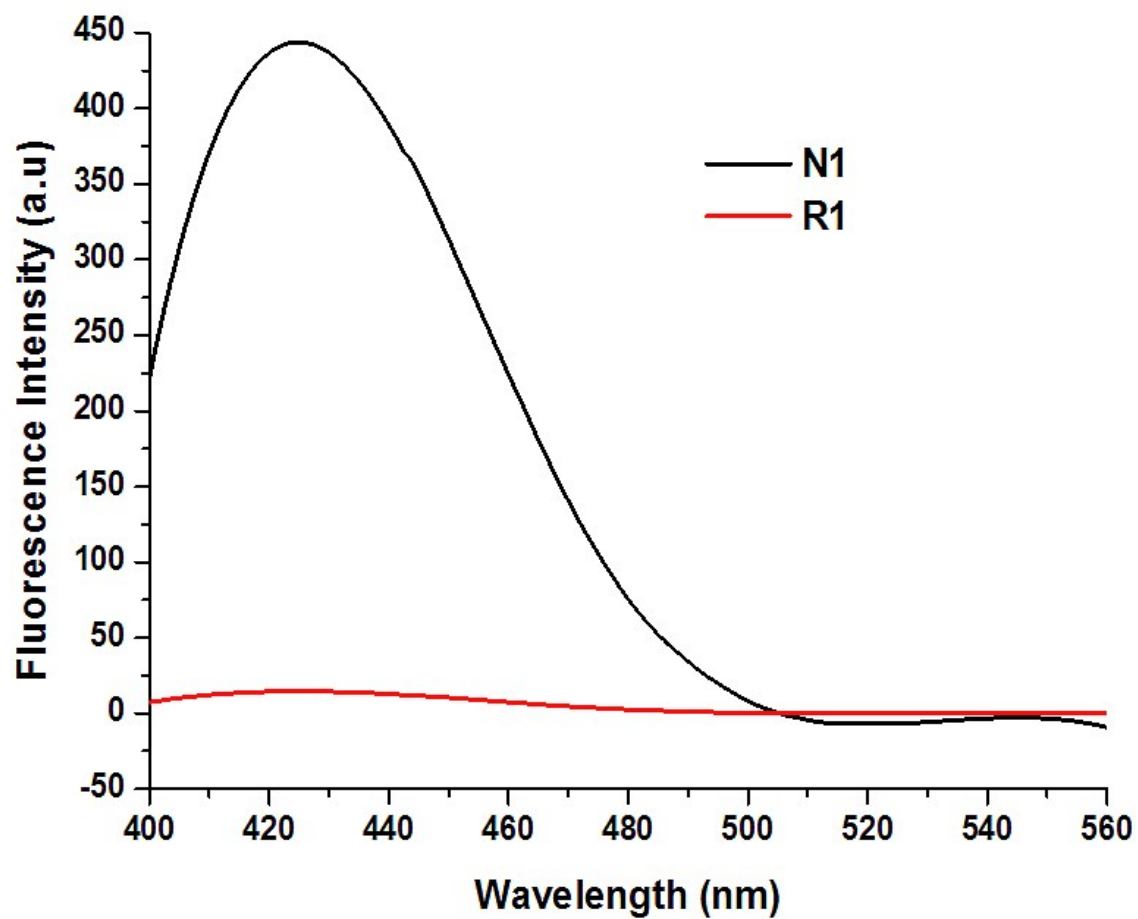


Figure S6: Comparison of fluorescence profile of prepared receptor (**R1**) and **R1** coated on surface of ZnO (**N1**)

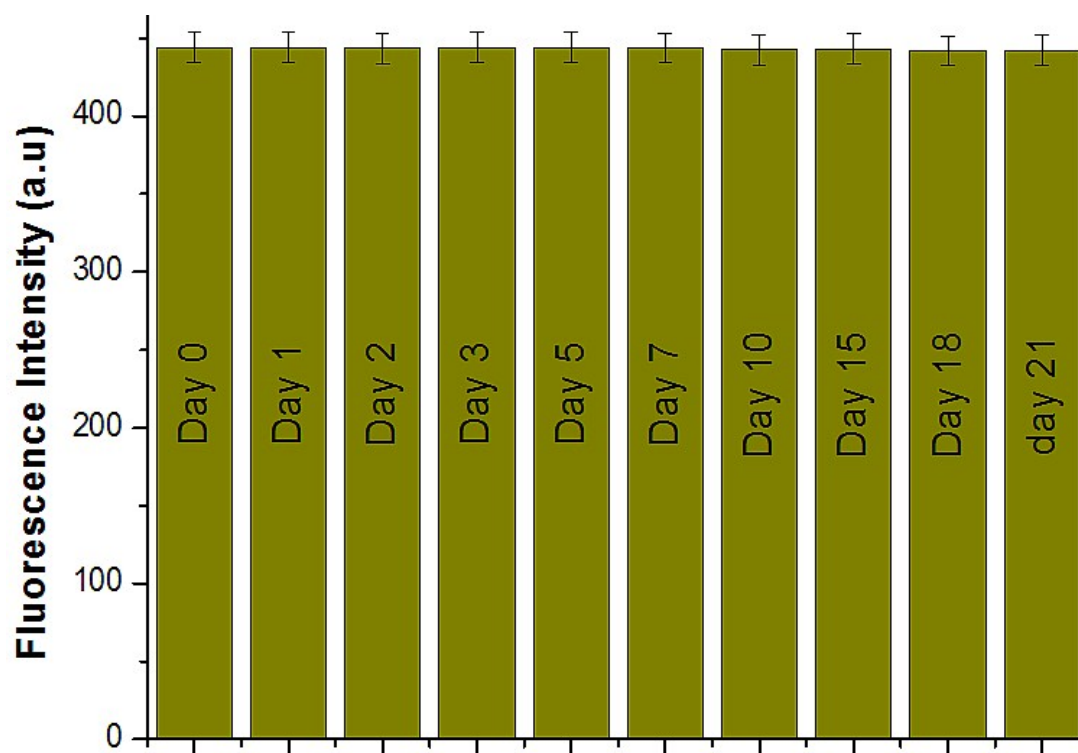


Figure S7: Bar diagram showing stability of **N1** fluorescence response in due course of time