

Ternary assemblies comprising metal-salophen complexes and 4,4'- bipyridine

Ferran Sabaté,^a Raquel Gavara,^a Ilaria Giannicchi,^b Ramon Bosque,^a Antonella Dalla

Cort^{b,} and Laura Rodríguez.^{a,*}*

^a Departament de Química Inorgànica, Universitat de Barcelona, Martí i Franquès 1-11,
08028 Barcelona, Spain. Fax: +34 934907725; Tel.: +34 934039130.

e-mail: laura.rodriiguez@qi.ub.es

^b Dipartimento di Chimica and IMC-CNR Sezione Meccanismi di Reazione, Università
La Sapienza, Box 34 Roma 62, 00185 Roma, Italy.

Fax: +39 06490421; Tel.: +39 0649913087.

e-mail: antonella.dallacort@uniroma1.it

Supporting Information

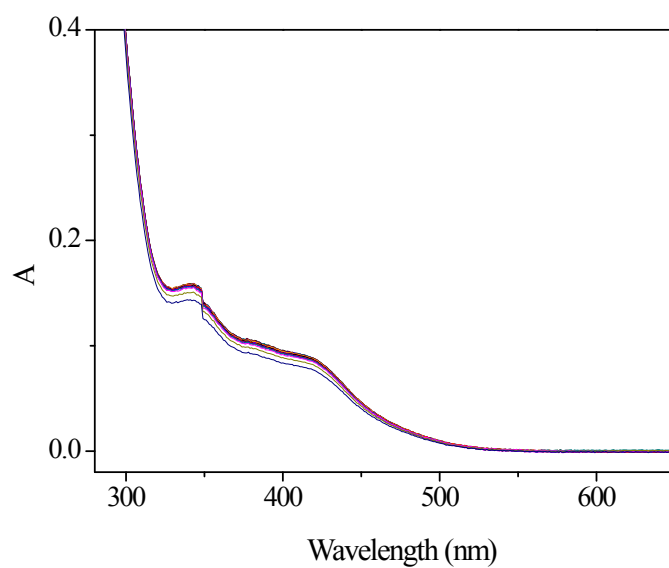


Figure S1. Absorption spectra of *ca.* $9 \cdot 10^{-6}$ M solutions of **2B** in ethanol in the presence of increasing amounts of 4,4'-bipyridine.

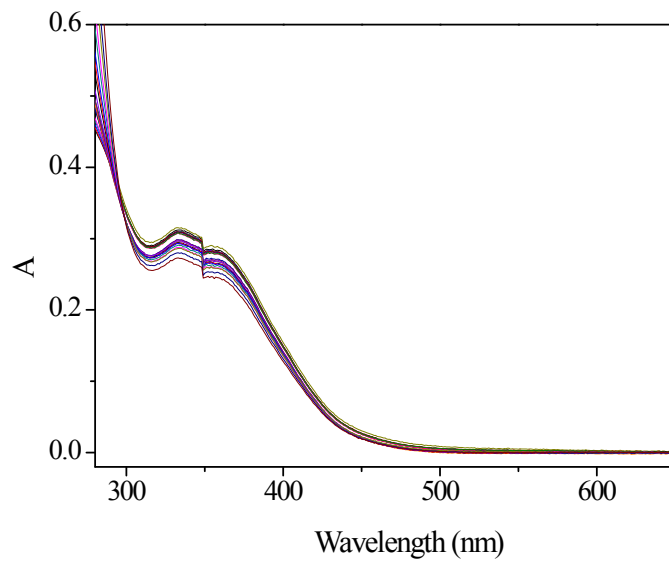


Figure S2. Absorption spectra of *ca.* $9 \cdot 10^{-6}$ M solutions of **2C** in ethanol in the presence of increasing amounts of 4,4'-bipyridine.

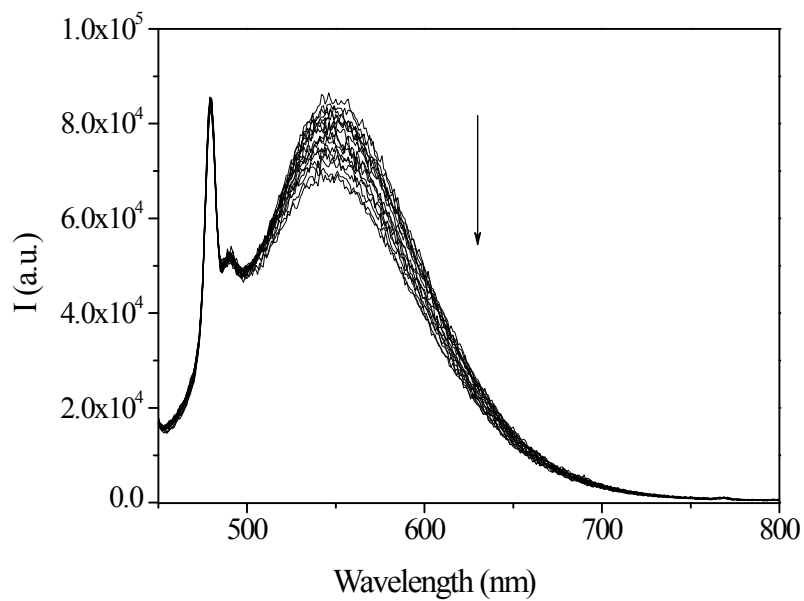


Figure S3. Emission spectra of *ca.* $9 \cdot 10^{-6}$ M solutions of **1A** in ethanol in the presence of increasing amounts of 4,4'-bipyridine.

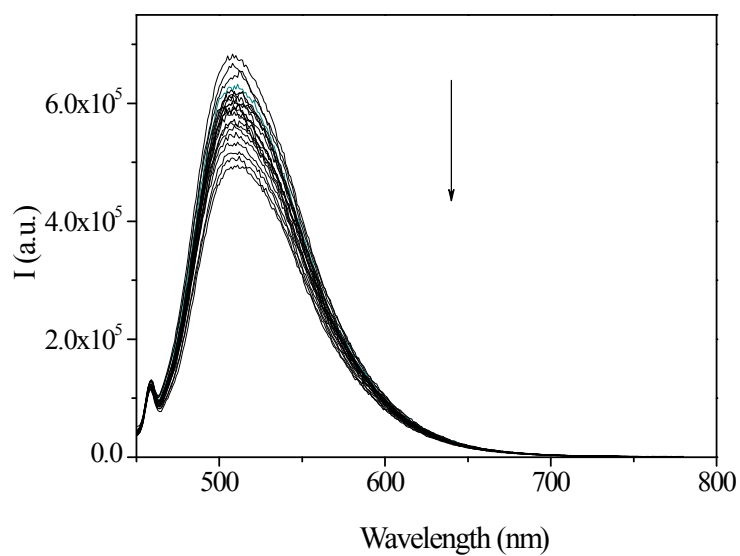


Figure S4 Emission spectra of *ca.* $9 \cdot 10^{-6}$ M solutions of **2A** in ethanol in the presence of increasing amounts of 4,4'-bipyridine.

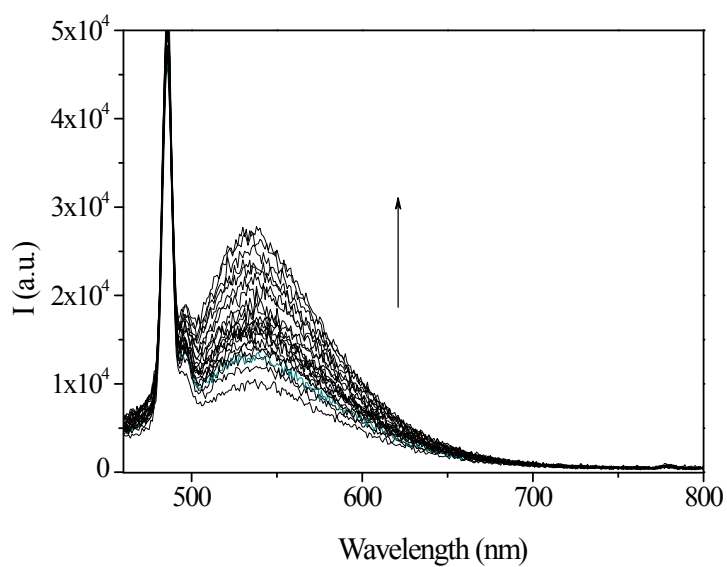


Figure S5. Emission spectra of *ca.* $9 \cdot 10^{-6}$ M solutions of **1B** in ethanol in the presence of increasing amounts of 4,4'-bipyridine.

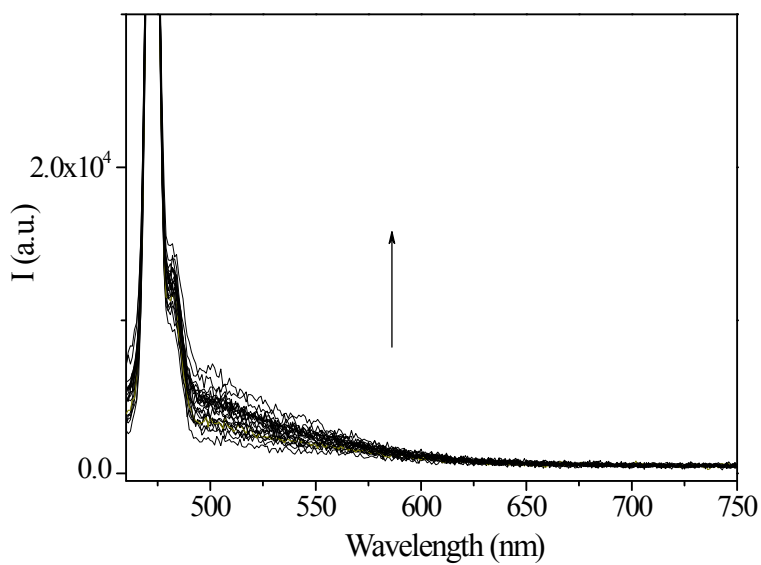
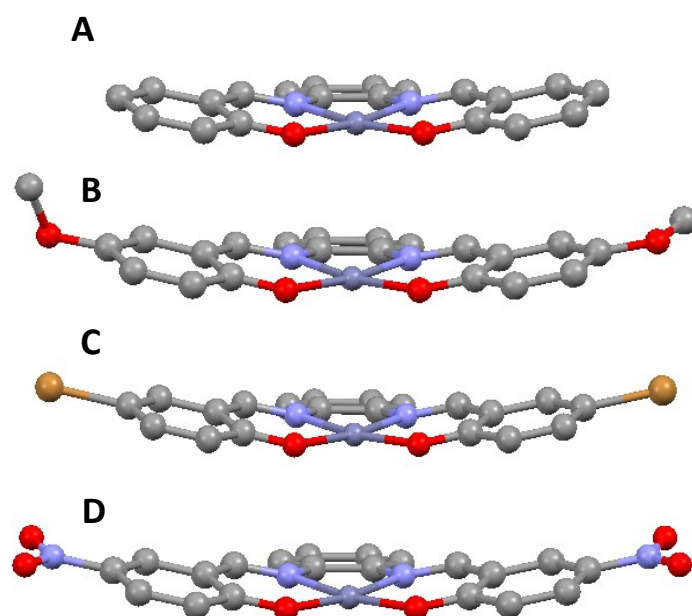


Figure S6. Emission spectra of *ca.* $9 \cdot 10^{-6}$ M solutions of **2B** in ethanol in the presence of increasing amounts of 4,4'-bipyridine.



Figures S7. Side view of the minimum energy geometry calculated for the mononuclear Zn model (A), 1A (B), 2A (C) and 3A (D).