

Supporting Information

Stimulated emission within the exciplex band by plasmonic-nanostructured polymeric heterojunctions

Xinping Zhang, Hongwei Li, Yimeng Wang, and Feifei Liu*

Institute of Information Photonics Technology and College of Applied Sciences,
Beijing University of Technology, Beijing 100124, P. R. China

Email: zhangxinping@bjut.edu.cn

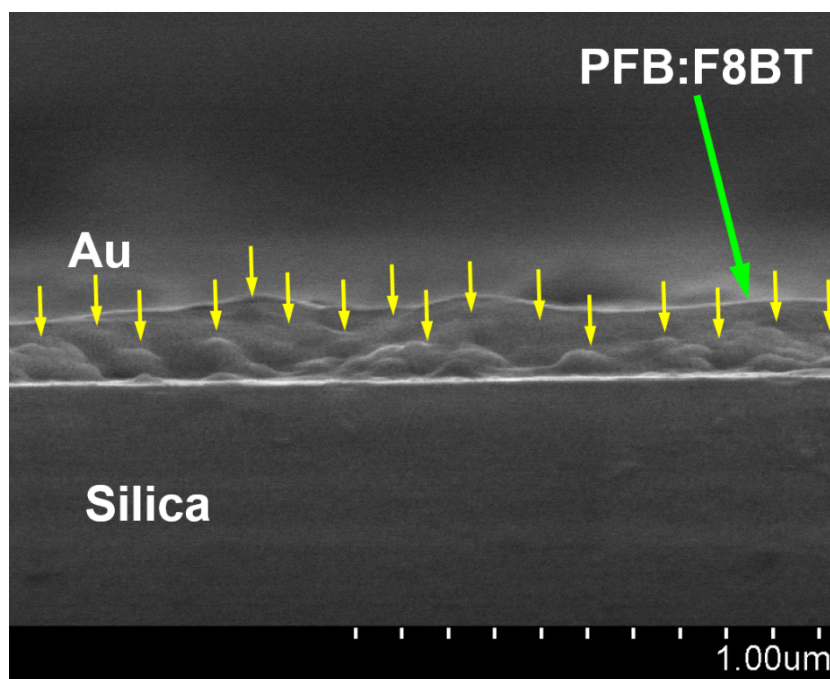


Fig. S1 SEM image of the cross-section profile of the cut sample. Gold nanoparticles are indicated by downward yellow arrows, the polymer blend film is indicated by a green arrow.

Supporting Information

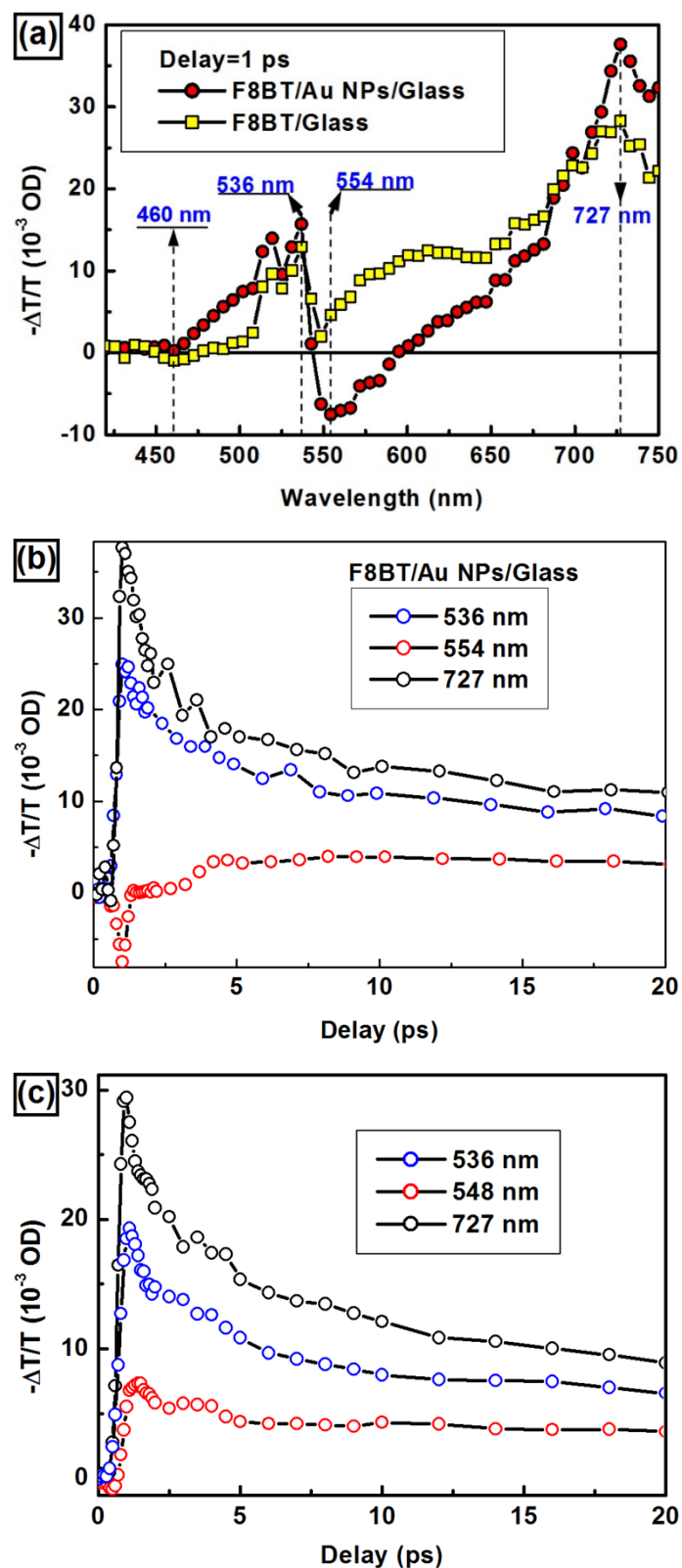


Fig. S2 (a) TA spectra at 1-ps delay in the spectral range from 420 to 750 nm for samples of F8BT/Au NPs/Glass (solid red circles) and F8BT/Glass (solid yellow squares). (b) TA kinetics at wavelengths 536, 554, 727 nm for sample F8BT/Au NPs/Glass. (c) TA kinetics at wavelengths 536, 548, 727 nm for F8BT/Glass.