

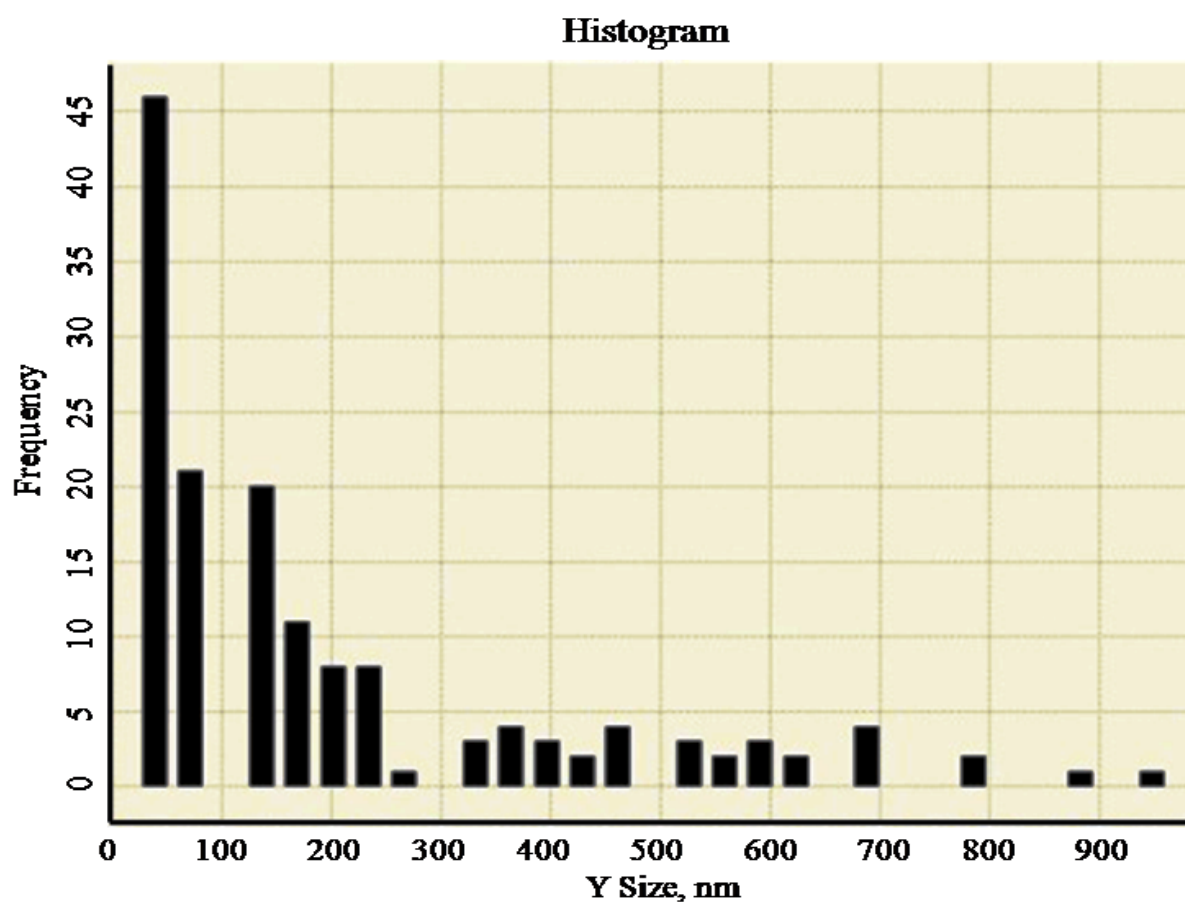
SUPPORTING INFORMATION

Surface plasmon coupled metal enhanced spectral and charge transport properties of Poly (3, 3'''- dialkylquarterthiophene) Langmuir Schaefer film.

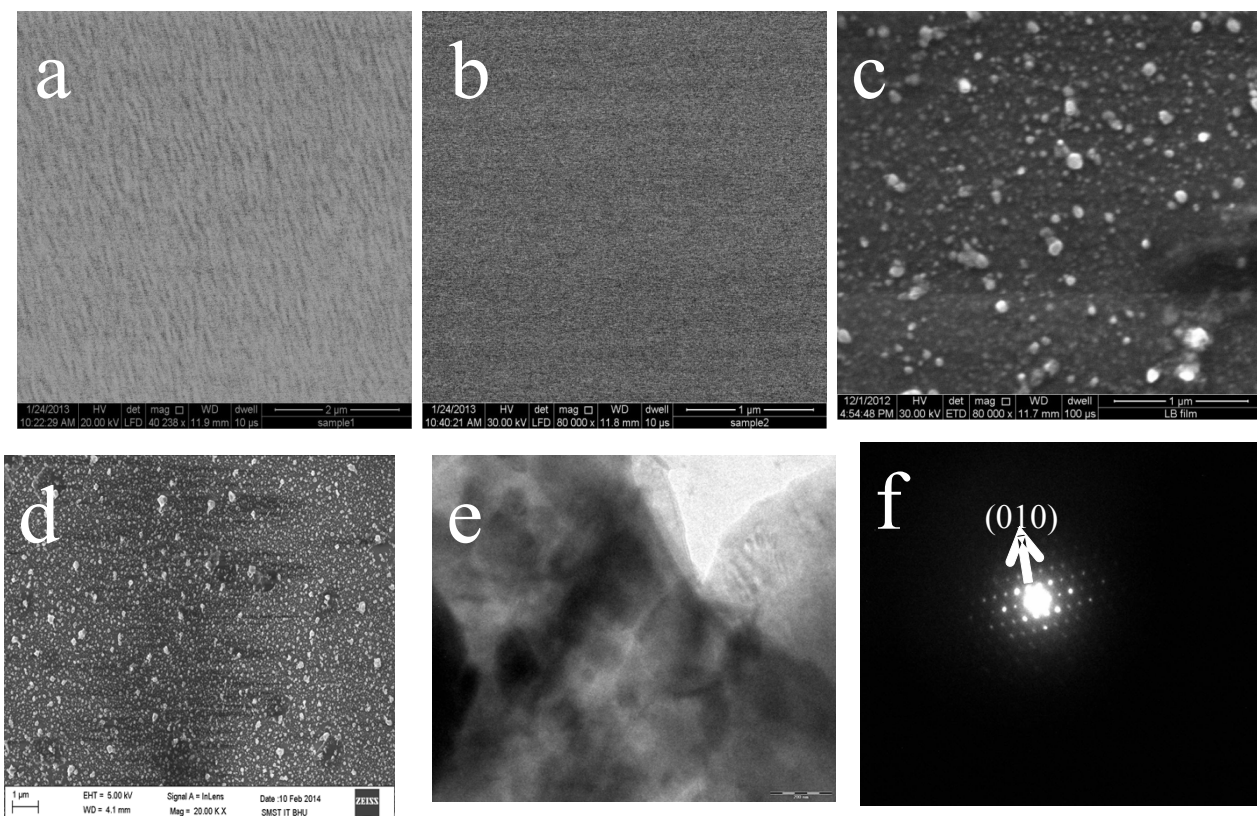
Rajiv K. Pandey ^a, Swatantra K. Yadav^b, Chandan Upadhyay, ^a Rajiv Prakash ^a and Hirdyesh Mishra ^{b *}

^a School of Materials Science and Technology, Indian Institute of Technology (BHU), and

^bDepartment of Physics, MMV, Banaras Hindu University, Varanasi-221005, India



Supplementary Fig. S1. Histogram of SNIF on ITO coated glass substrate in AFM image.



Supplementary Fig. S2. SEM image of PQT-12 LS film (a) Single Layer over ITO (b) Double layer over ITO (c) Double layer LS film deposited over SNIF(d) SNIF (e) TEM image of single layer LS film and (f) SAED pattern