

Supporting Information For

In Situ Crystallization for Fabrication of Core-satellites structured BiOBr-CdS Heterostructure with an Excellent Visible–Light-Responsive Photoreactivity

Yuxi Guo,^a Hongwei Huang, ^{*a} Ying He,^a Na Tian,^a Tierui, Zhang,^b Paul K. Chu,^c Qi An^{*a} and Yihe Zhang^{*a}

^a Beijing Key Laboratory of Materials Utilization of Nonmetallic Minerals and Solid Wastes, National Laboratory of Mineral Materials, School of Materials Science and Technology, China University of Geosciences, Beijing 100083, China, Tel: 86-10-82333433; E-mail: zyh@cugb.edu.cn; hhw@cugb.edu.cn.

^b Key Laboratory of Photochemical Conversion and Optoelectronic Materials, Technical Institute of Physics and Chemistry, Chinese Academy of Sciences, Beijing 100190, China

^c Department of Physics and Materials Science, City University of Hong Kong, Tat Chee

Table of content:

Figure S1.....2

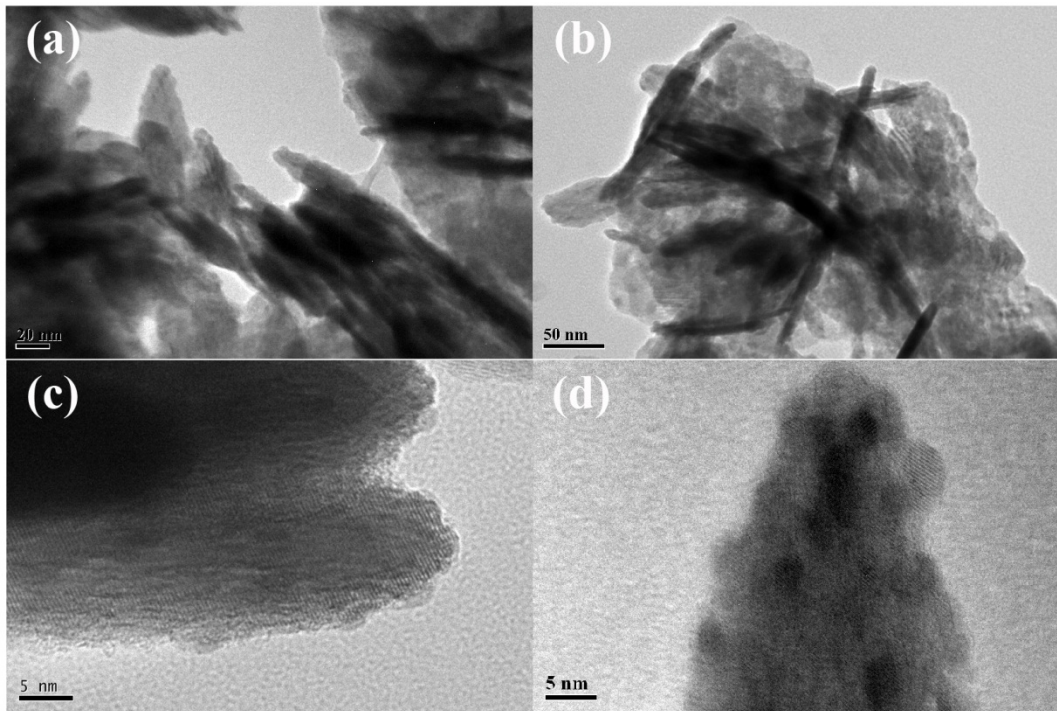


Figure S1. TEM images of 1:5 BiOBr-CdS