
Supporting Information

Template-Assisted Synthesis of $\text{Co}(\text{OH})_2/\text{RGO}/\text{NiO}$ Sandwich-Structured Nanotube Arrays for Supercapacitor Application

Han Xu, Chi Zhang, Wen Zhou, and Gao-Ren Li*

MOE Laboratory of Bioinorganic and Synthetic Chemistry, KLGHEI of Environment and Energy Chemistry, School of Chemistry and Chemical Engineering, Sun Yat-sen University, Guangzhou 510275, China

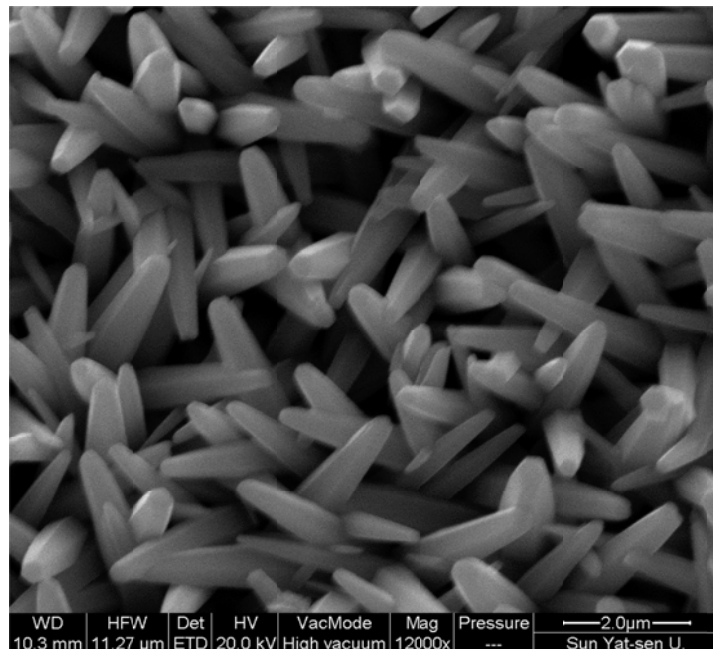


Figure S1. SEM image of ZnO NRAs.

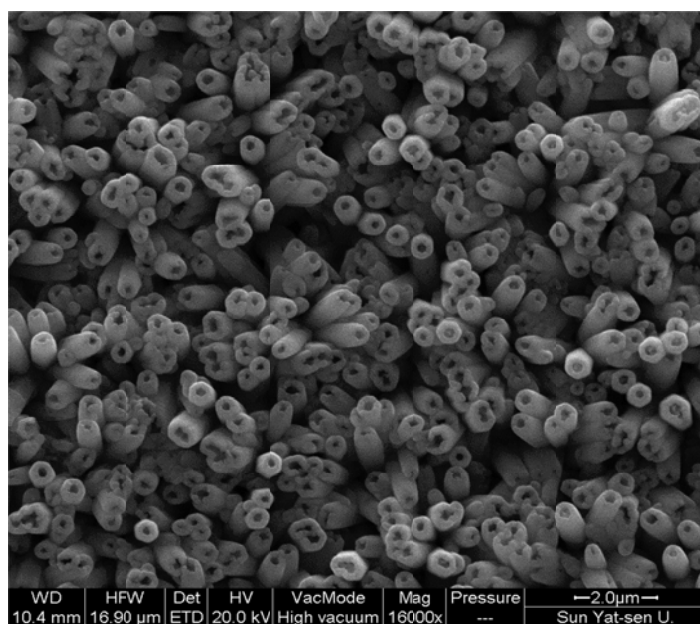


Figure S2. SEM image of MnO₂ NTAs.

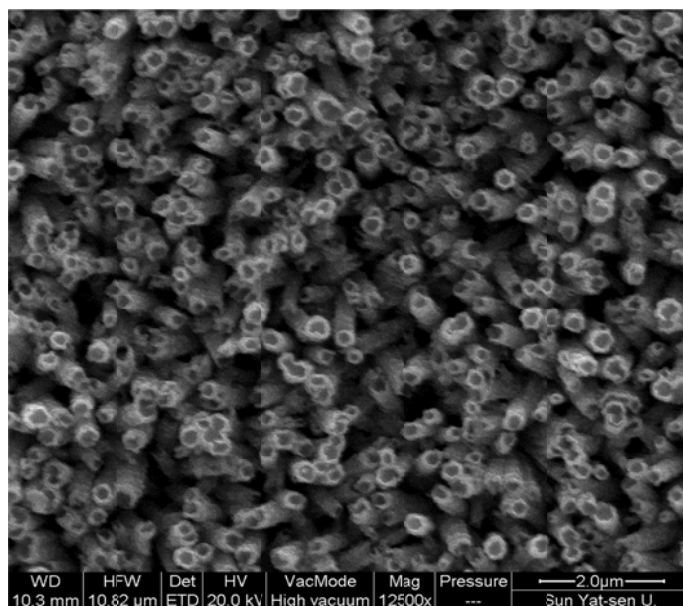


Figure S3. SEM image of Co(OH)₂ NTAs.

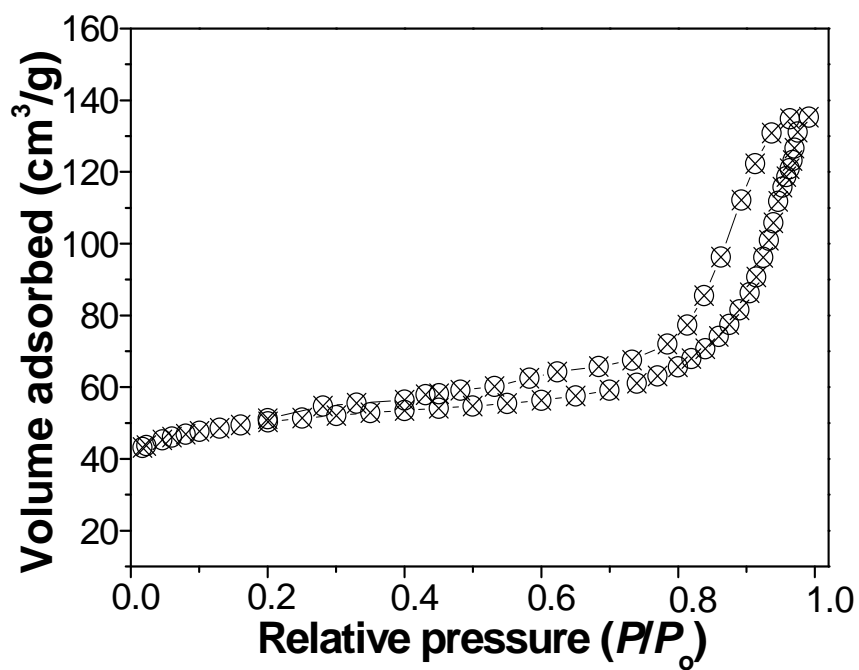


Figure S4. N₂ adsorption-desorption isotherms of Co(OH)₂/RGO/NiO SNTAs.

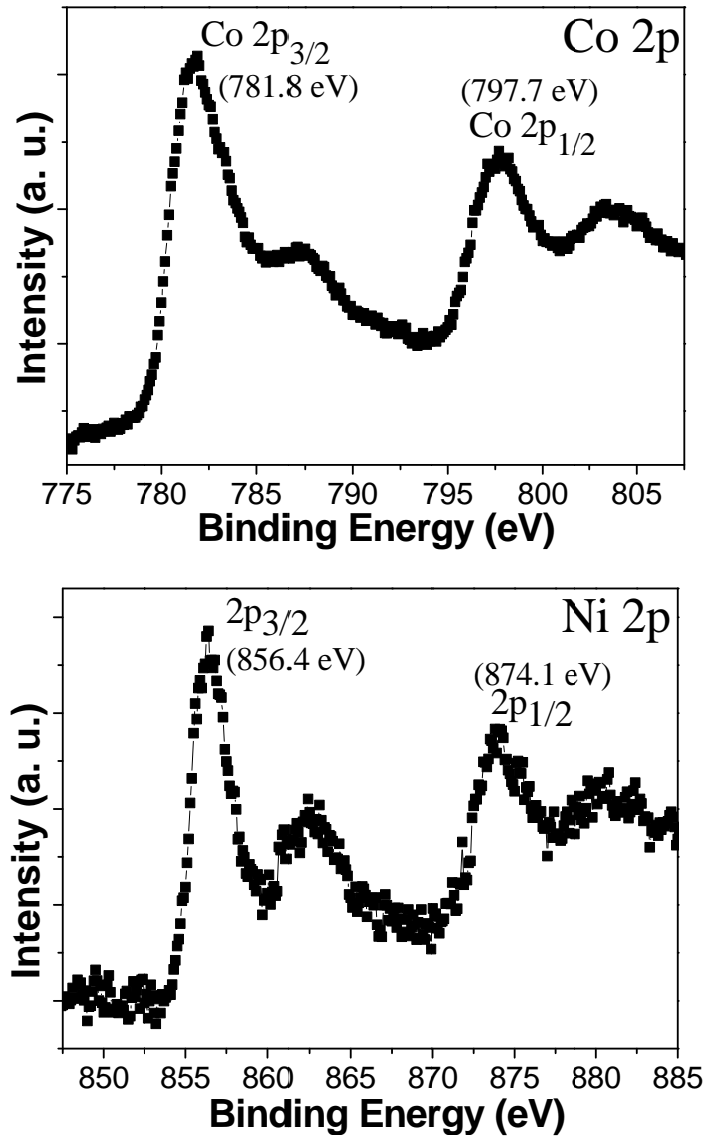


Figure S5. XPS spectra of (a) Co 2p performed on Co(OH)₂ NTAs and (b) Ni 2p performed on NiO NTAs.

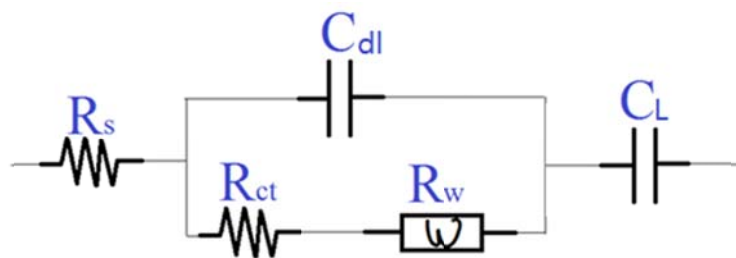


Figure S6. The equivalent circuit of the measured Nyquist plots of Co(OH)₂/RGO/NiO SNTAs.

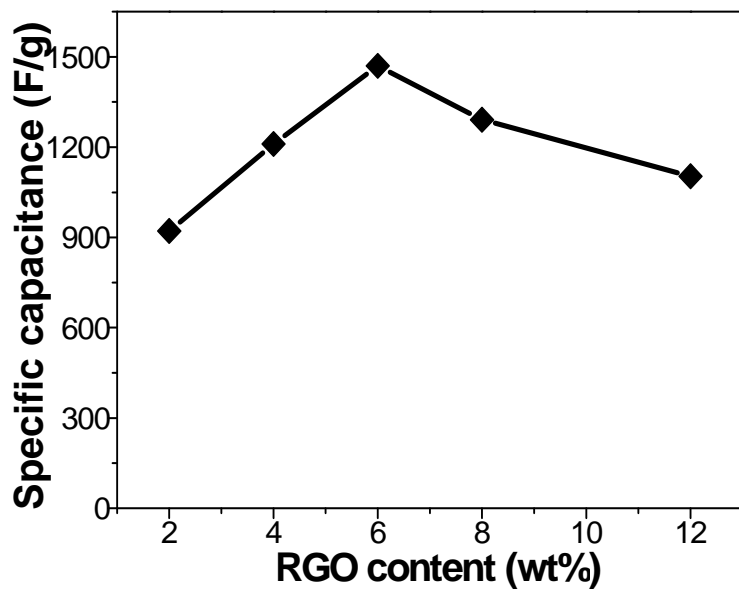


Figure S7. The dependence of specific capacitance on RGO content in the $\text{Co(OH)}_2/\text{RGO}/\text{NiO}$ SNTAs.

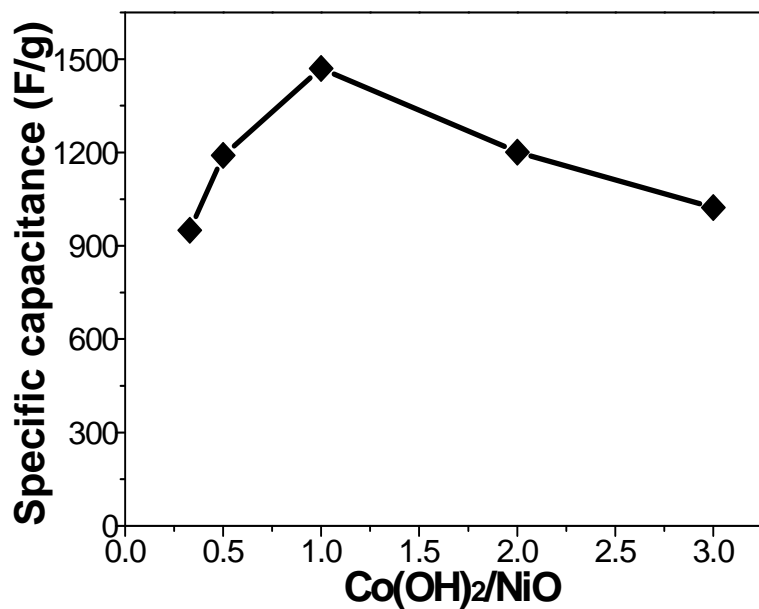


Figure S8. The dependence of specific capacitance on $\text{Co(OH)}_2/\text{NiO}$ ratio in the $\text{Co(OH)}_2/\text{RGO}/\text{NiO}$ SNTAs.

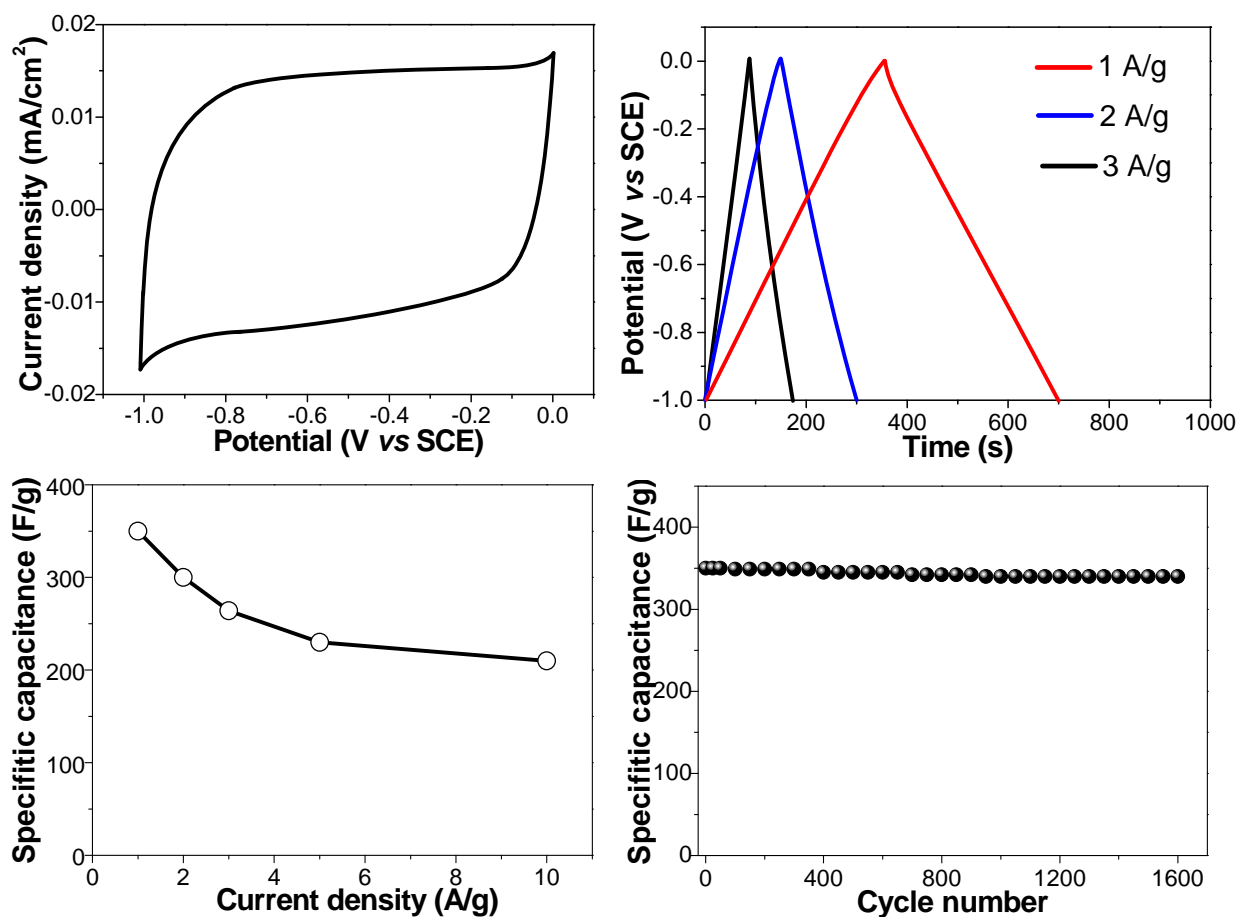


Figure S9. (a) CV curve at 100 mV/s; (b) Galvanostatic charge/discharge curves at different current densities; (c) The dependence of specific capacitance on current density; (d) Cycle performance of AC in 1.0 M KOH solution.

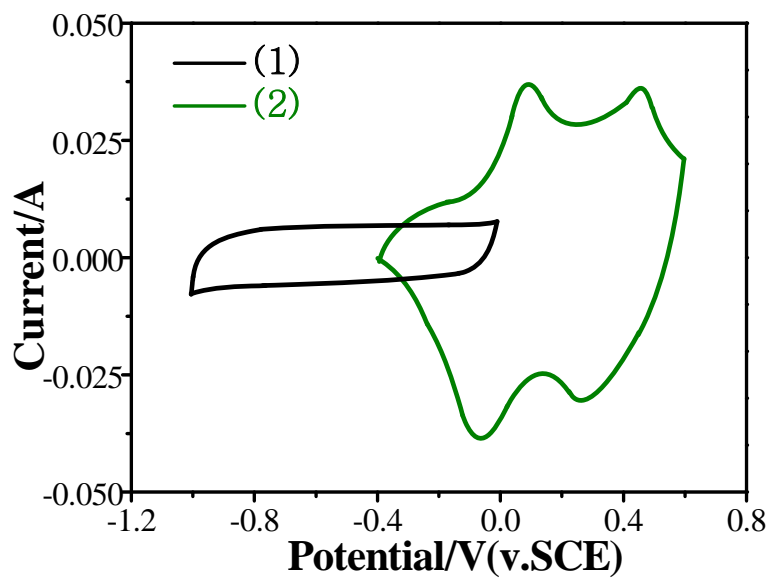


Figure S10. CV curves of AC (black curve) and Co(OH)₂/RGO/NiO SNTAs (green curve) in 1.0 M KOH solution.

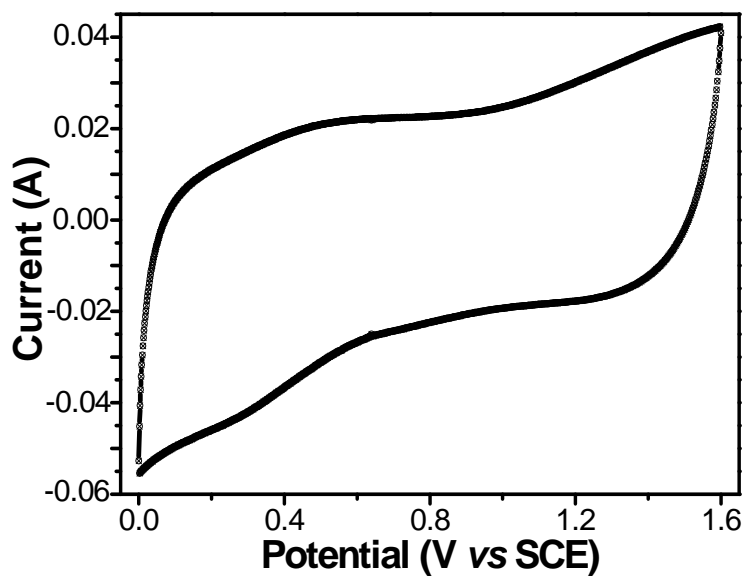


Figure S11. CV of Co(OH)₂/RGO/NiO SNTAs//AC ASCs measured at 100 mV/s.