

Supporting Information:

Electrophoretic Deposition of Fluorescent Cu and Au Sheets for Light-Emitting Diodes

*Jiale Liu,^a Zhennan Wu,^a Tingting Li,^a Ding Zhou,^a Kai Zhang,^a Yu Sheng,^{*b} Jianli Cui,^{*c} Hao Zhang^{*a} and Bai Yang^a*

^a State Key Laboratory of Supramolecular Structure and Materials, College of Chemistry, Jilin University, Changchun 130012, P. R. China. E-mail: hao_zhang@jlu.edu.cn.

^b Department of Dermatology, First Affiliated Hospital, Harbin Medical University, Harbin 150001, P. R. China. E-mail: sf555812@163.com.

^c Department of Hand & Foot Surgery, The First Hospital of Jilin University, Changchun 130021, P. R. China. E-mail: tsuijianli@126.com.

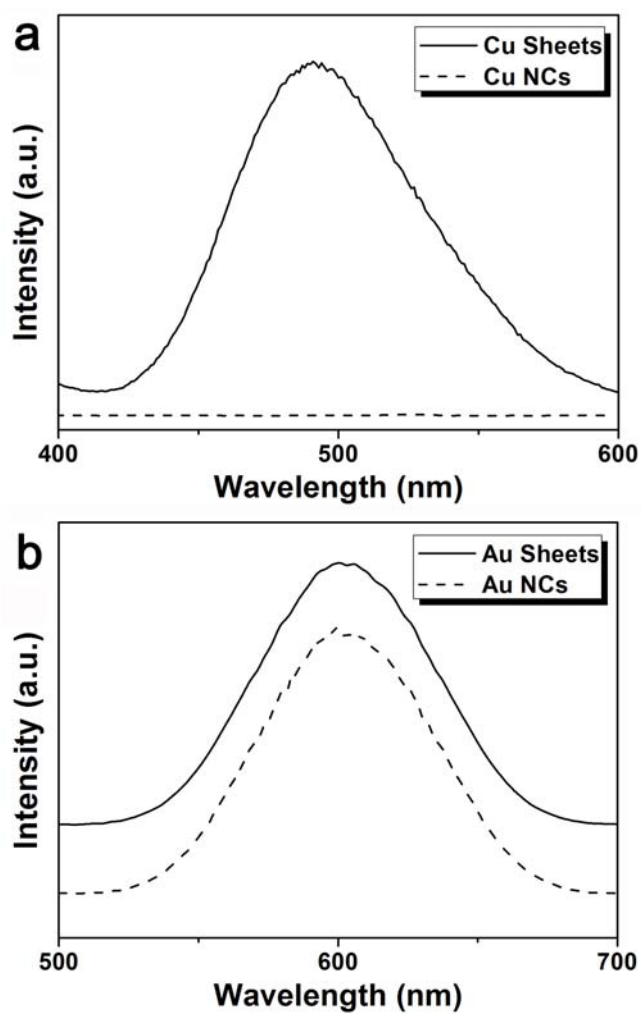


Figure S1. (a) PL spectra of individual Cu NCs and the as-assembled Cu sheets. (b) PL spectra of individual Au NCs and the as-assembled Au sheets.

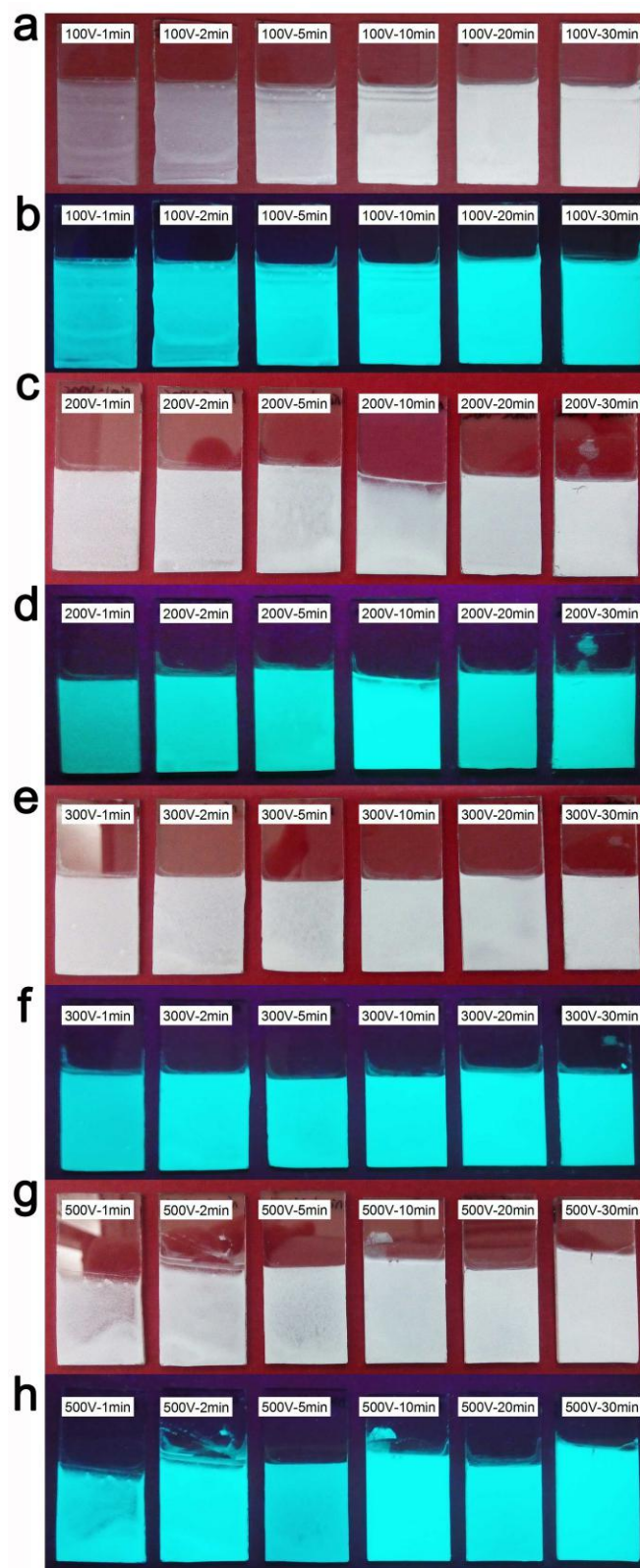


Figure S2. The optical (a, c, e, g) and fluorescent (b, d, f, h) images of the as-deposited Cu sheets film under 100 (a, b), 200 (c, d), 300 (e, f), and 500 (g, h) V for 1, 2, 5, 10, 20, and 30 min. The suspension for EPD is prepared by dispersing 8 mg Cu sheets in 10 mL chloroform.

Concentration Time	2 min	5 min	10 min	20 min
0.2 mg/mL	0.4	0.7	0.8	0.9
0.4 mg/mL	1.1	1.3	1.6	1.9
0.8 mg/mL	1.7	3.4	4.7	5.9

Table S1. The deposited mass (mg) *versus* Cu sheets concentration and deposition duration. The EPD is operated under 200 V. The volume of the suspension is 10 mL.

Voltage Time	1 min	2 min	5 min	10 min	20 min	30 min
100 V	0.5	0.9	1.9	2.8	3.8	4.8
200 V	0.9	1.7	3.4	4.7	5.9	6.3
300 V	1.2	2.5	4.8	5.8	6.7	6.9
500 V	2.2	4.3	5.7	6.5	7.0	7.2

Table S2. The deposited mass (mg) *versus* the voltage and deposition duration. The Cu sheets concentration is 0.8 mg/mL. The volume of the suspension is 10 mL.

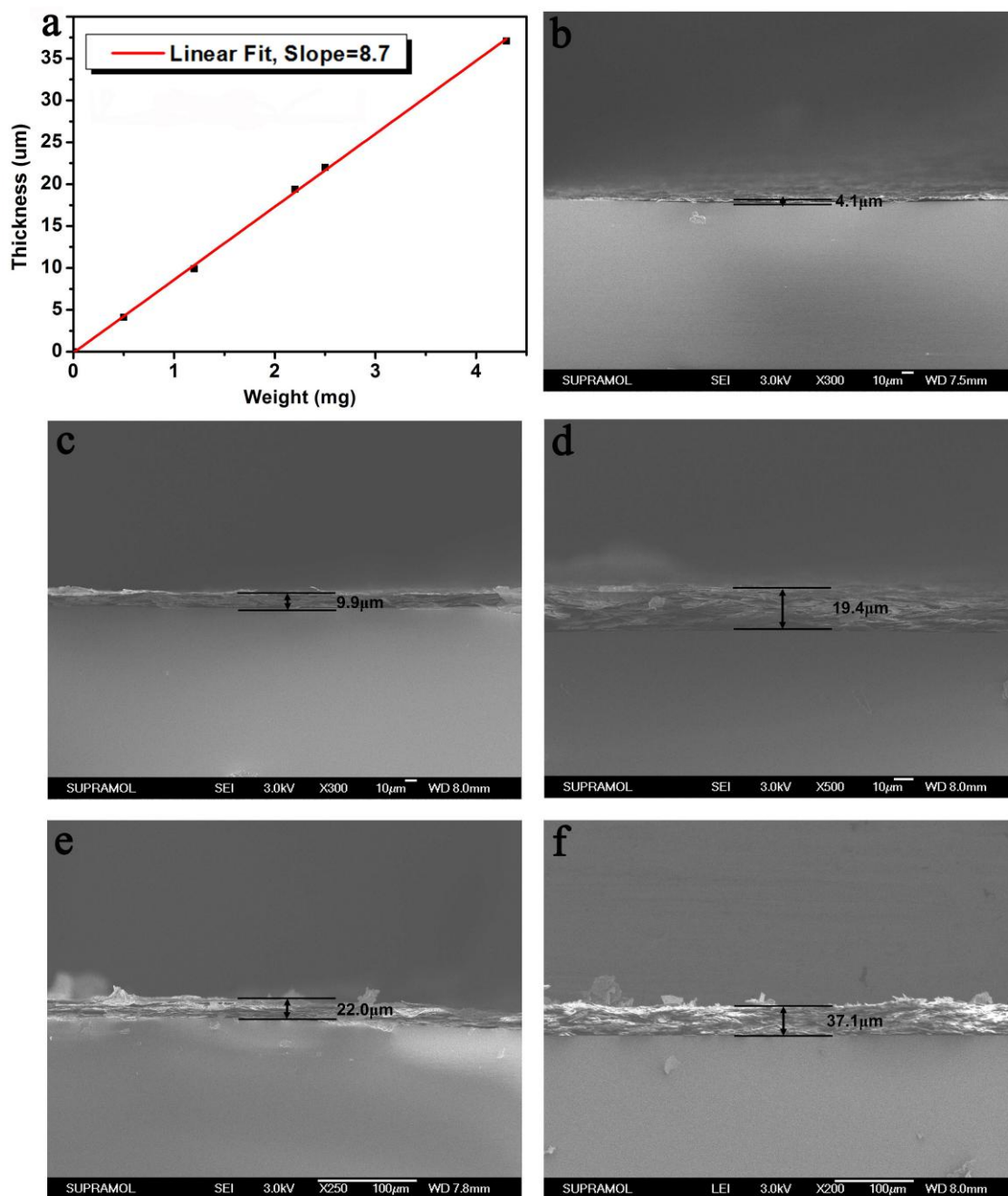


Figure S3. (a) The film thickness *versus* the deposited mass of Cu sheets. (b-f) Cross sectional SEM images of the as-deposited Cu sheets film under 100 V for 1 min (b), 300 V for 1 min (c), 500 V for 1 min (d), 300 V for 2 min (e), and 500 V for 2 min (f). The suspension for EPD is prepared by dispersing 8 mg Cu sheets in 10 mL chloroform.