

Can antimonide-based nanowires form wurtzite crystal structure?

Sepideh Gorji Ghalamestani¹, Sebastian Lehmann¹, Kimberly A. Dick^{1,2}

¹ Solid State Physics, Lund University, Box 118 SE-22100 Lund, Sweden

² Polymer and Materials Chemistry, Lund University, Box 124, SE-22100 Lund, Sweden

Supplementary information

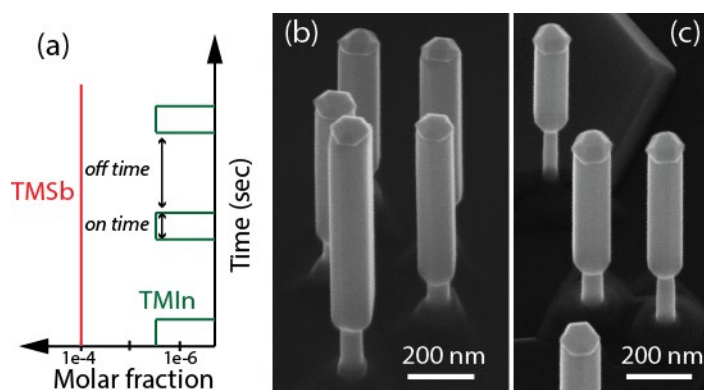


Figure S1 (a) Schematic illustration of TMSb and TMIn precursor molar fractions used to grow InSb nanowires where TMSb was kept constant (1.08×10^{-4}) and TMIn with molar fraction of 4.88×10^{-6} was pulsed. SEM images of a set of InAs-InSb nanowires where the InSb segment is grown with the conditions shown in (a). For (b) on time was set to 10 s and off time to 60 s with 30 cycles (c). For (c) on time was set to 5 and off time to 60 s with 30 cycles.