

Intended Tb ³⁺ Dopant Concentration in Gd _{1-x} Tb _x OCl	x = 0.020	x = 0.050	x = 0.100	x = 0.150	x = 0.200	x = 0.250	x = 0.300
Actual Tb ³⁺ Dopant Concentration in Gd _{1-x} Tb _x OCl	x = 0.018	x = 0.042	x = 0.084	x = 0.131	x = 0.171	x = 0.216	x = 0.234

Table S1. The top row shows the intended Tb³⁺ dopant concentration for Gd_{1-x}Tb_xOCl, whereas the bottom row shows the actual dopant concentration as determined by inductively coupled plasma mass spectrometry.

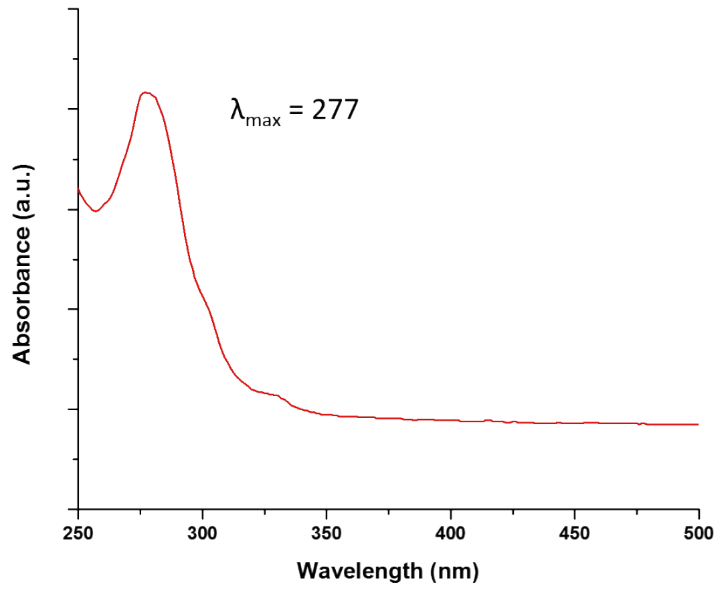


Figure S1. Optical absorption spectrum of $\text{Gd}_{0.985}\text{Tb}_{0.015}\text{OCl}$ nanocrystals dispersed in hexanes.