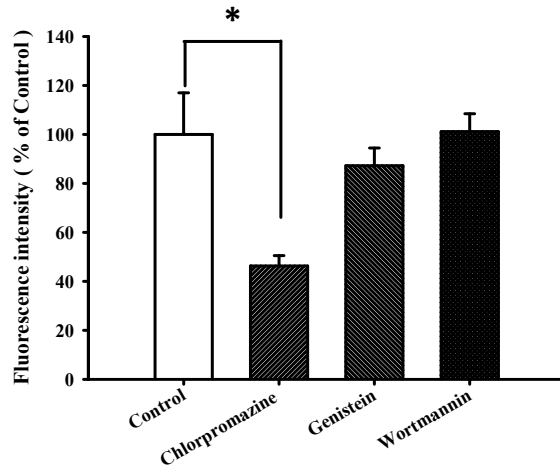
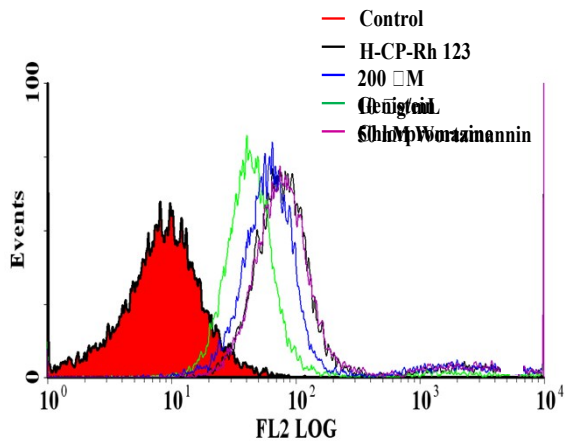
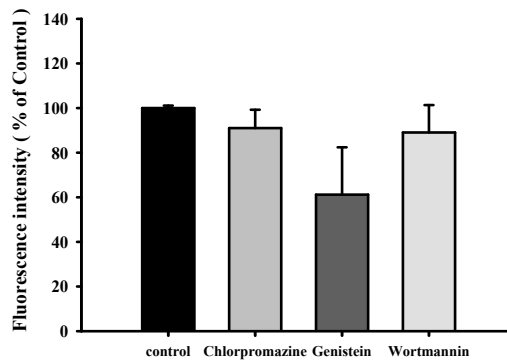
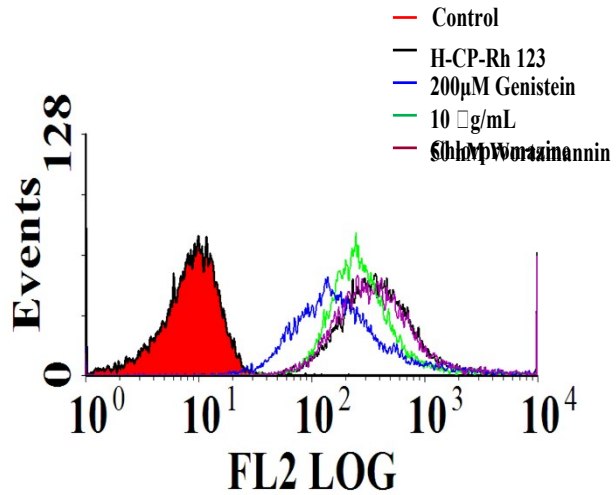


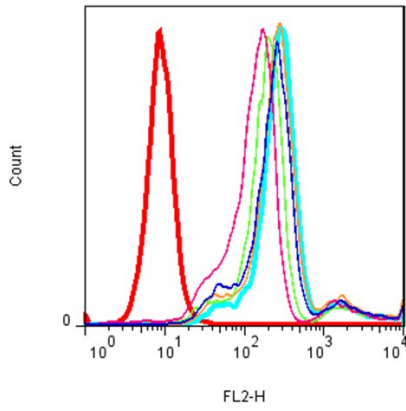
CRL-5802 cells



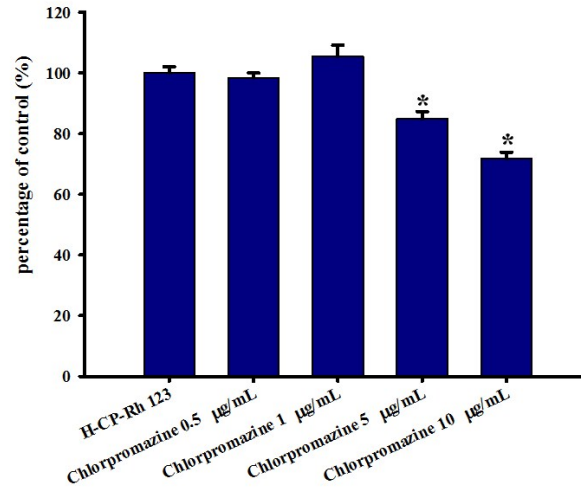
H1299 cells



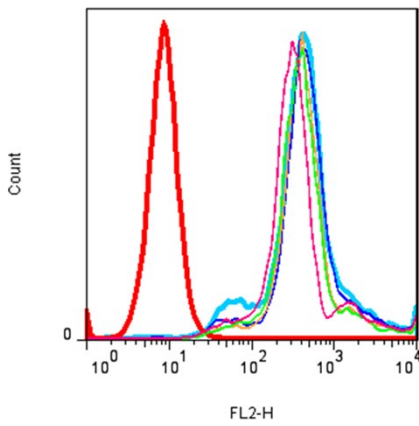
## CRL-5802



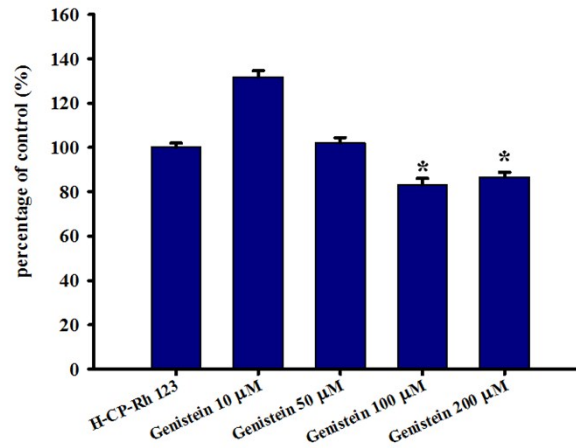
- Control
- H-CP-Rh 123
- Chlorpromazine 0.5 µg/mL
- Chlorpromazine 1 µg/mL
- Chlorpromazine 5 µg/mL
- Chlorpromazine 10 µg/mL



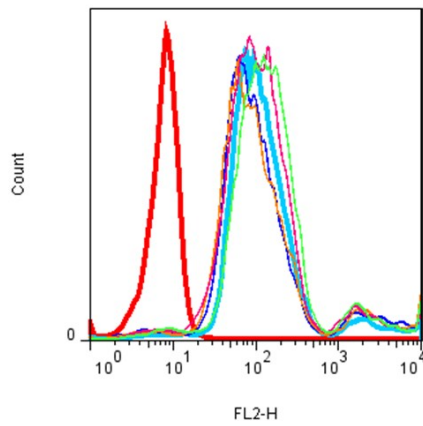
## CRL-5802



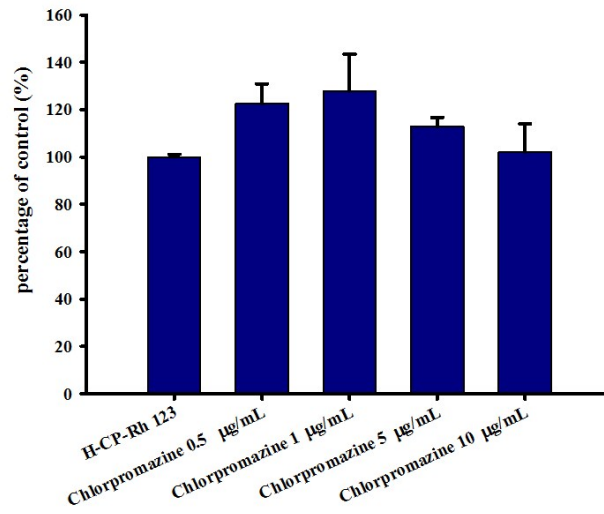
- Control
- H-CP-Rh123
- Genistein 10 µM
- Genistein 50 µM
- Genistein 100 µM
- Genistein 200 µM



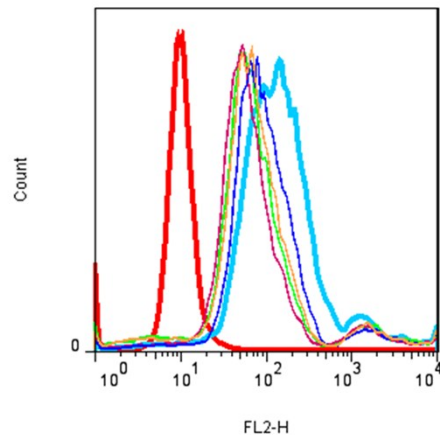
## H1299



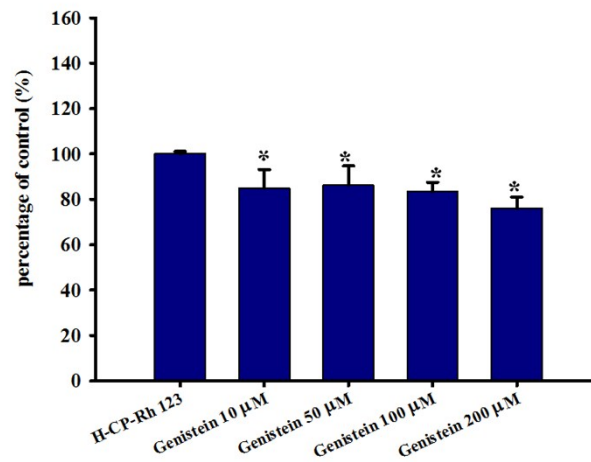
- Control
- H-CP-Rh 123
- Chlorpromazine 0.5 µg/mL
- Chlorpromazine 1 µg/mL
- Chlorpromazine 5 µg/mL
- Chlorpromazine 10 µg/mL



## H1299



- Control
- H-CP-Rh 123
- Genistein 10 µM
- Genistein 50 µM
- Genistein 100 µM
- Genistein 200 µM



**Figure S1.** The inhibition of cellular uptake in CRL-5802 cells and H1299 cells pretreated with wortmannin, chlorpromazine and genistein inhibitors for 30 minutes before the cells were exposed to the Rh123-H-CP micelle for 2 hours of incubation.