

Supporting Information

Polymeric Capsule-Cushioned Leukocyte Cell Membrane Vesicles as a Biomimetic Delivery Platform

Changyong Gao, Zhiguang Wu, Zihua Lin, Xiankun Lin, and Qiang He*

State Key Laboratory of Robotics and System (HIT), Micro/Nanotechnology
Research Center, Harbin Institute of Technology, Yikuangjie 2, Harbin 150080, China

Fig. S1

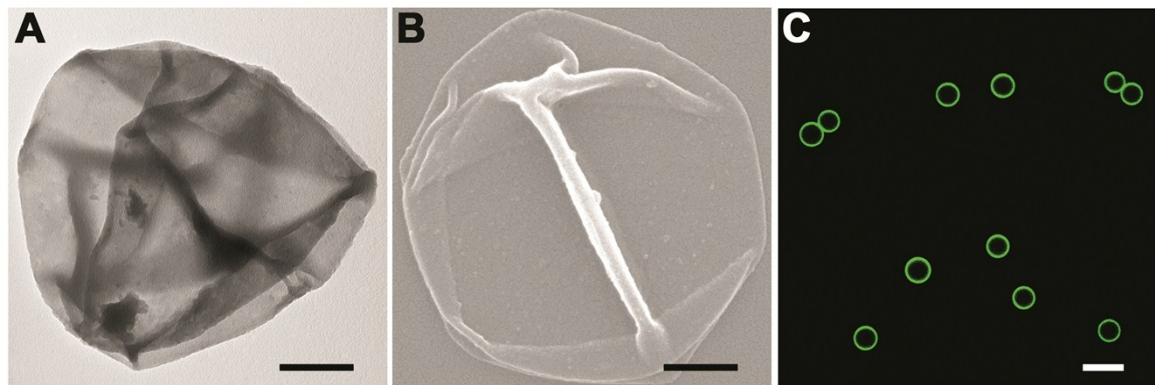


Fig. S1 Characterization of the capsules. (A) TEM image, (B) SEM image, (C) CLSM image of FITC-capsules. Scale bar = 500 nm (A, B) and 5 μ m (C).

Fig. S2

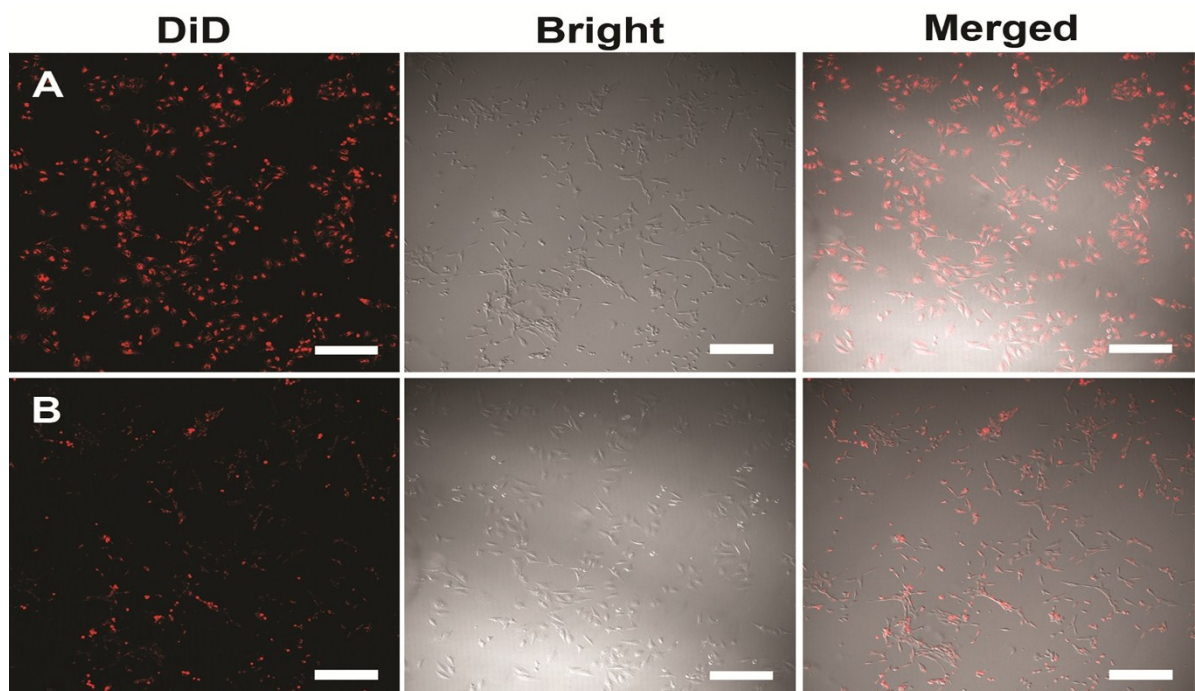


Fig. S2 J774 cells binding ability. (A) HeLa cells. (B) L02 cells. Scale bar = 250 μ m.