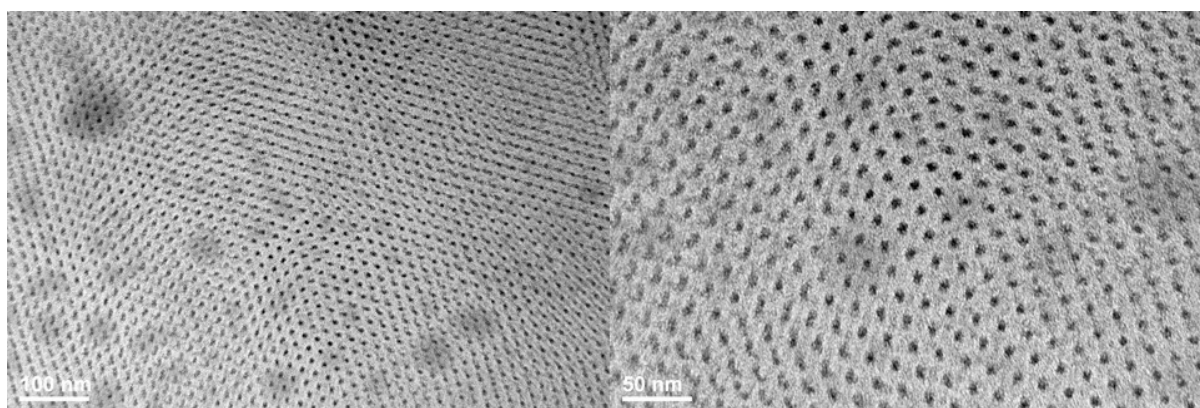


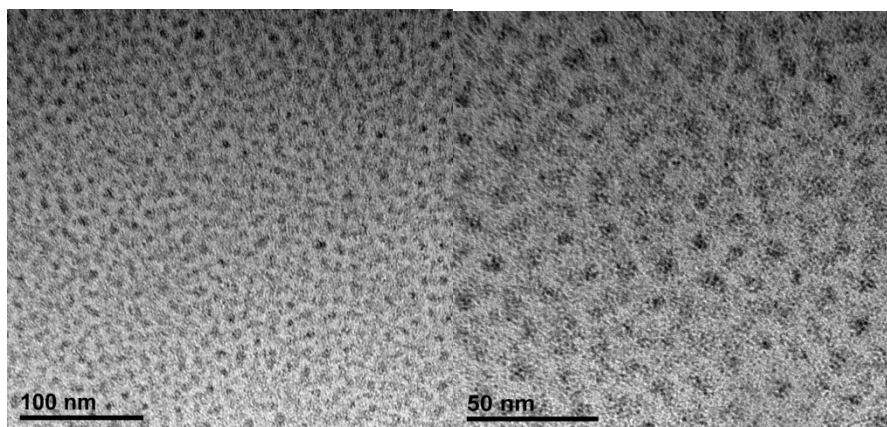
## Supporting Information

### Micropore Extrusion-Induced Alignment Transition from Perpendicular to Parallel of Cylindrical Domains in Block Copolymers

Ting Qu,<sup>a</sup> Yongbin Zhao,<sup>b</sup> Zongbo Li,<sup>a</sup> Pingping Wang,<sup>a</sup> Shubo Cao,<sup>a</sup> Yawei Xu,<sup>a</sup> Yayuan Li,<sup>a</sup> Aihua Chen<sup>\*a</sup>



**Figure S1.** TEM image of PEO<sub>114</sub>-*b*-PMA(Az)<sub>30</sub> extruded sample, subsequently ultrasonicated for 60 min and annealed at 140 °C in vacuum for 2 hours.



**Figure S2.** TEM image of PEO<sub>114</sub>-*b*-PMA(Az)<sub>30</sub> extruded sample, annealed at 140 °C in vacuum for 5 days.

