

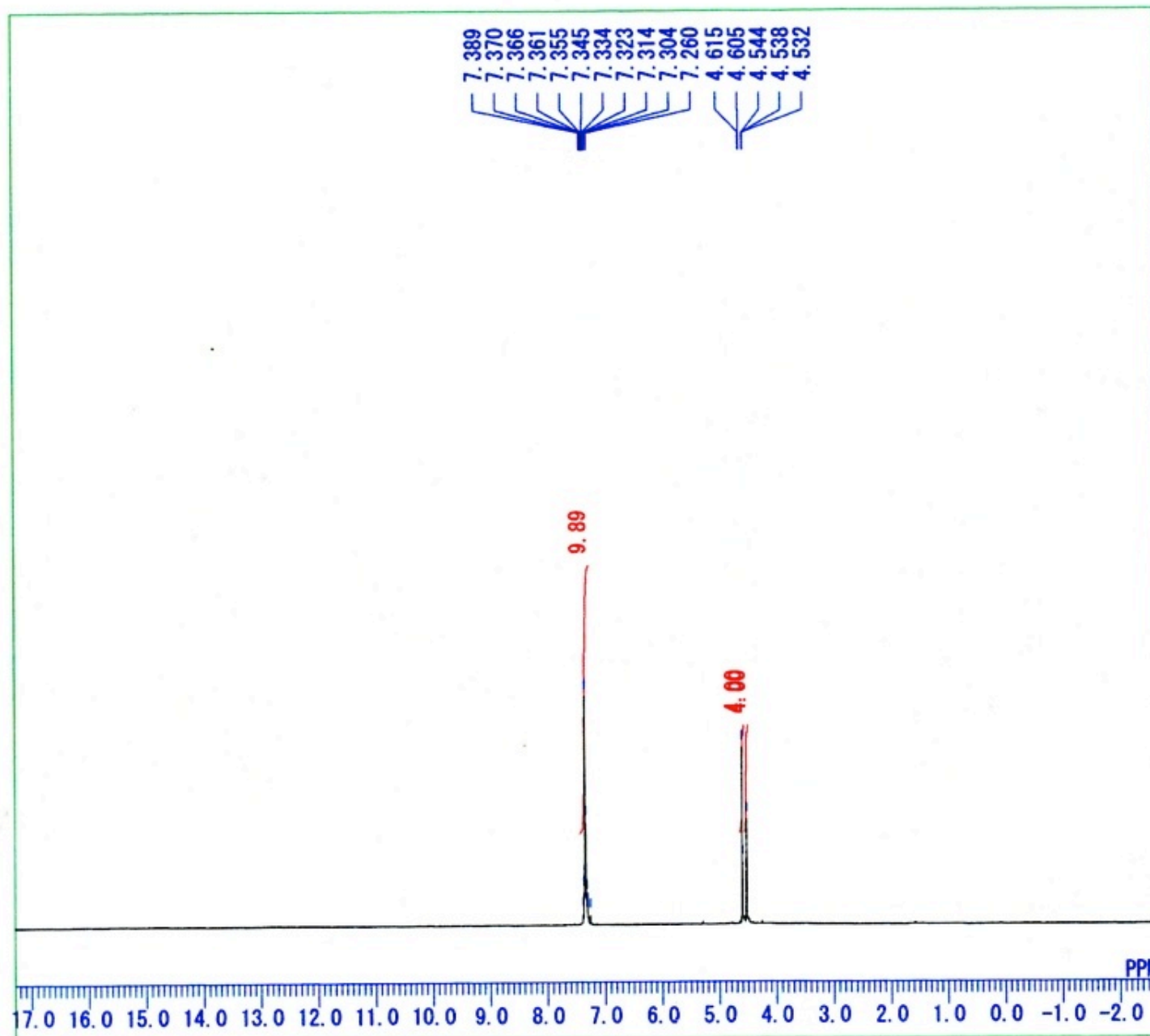
*Electronic Supplementary Information (1)*

**A Efficient Approach to *gem*-Difluorocyclopropylstannanes *via*  
Highly Regio- and Stereoselective Hydrostannation of  
*gem*-Difluorocyclopropenes  
and their Unusual Ring-Opening Reaction  
to Afford  $\beta$ -Fluoroallylic Alcohols**

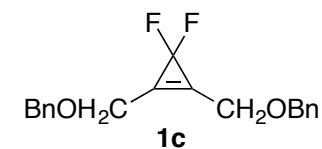
**Takashi Nihei, Tomoko Hoshino and Tsutomu Konno\***

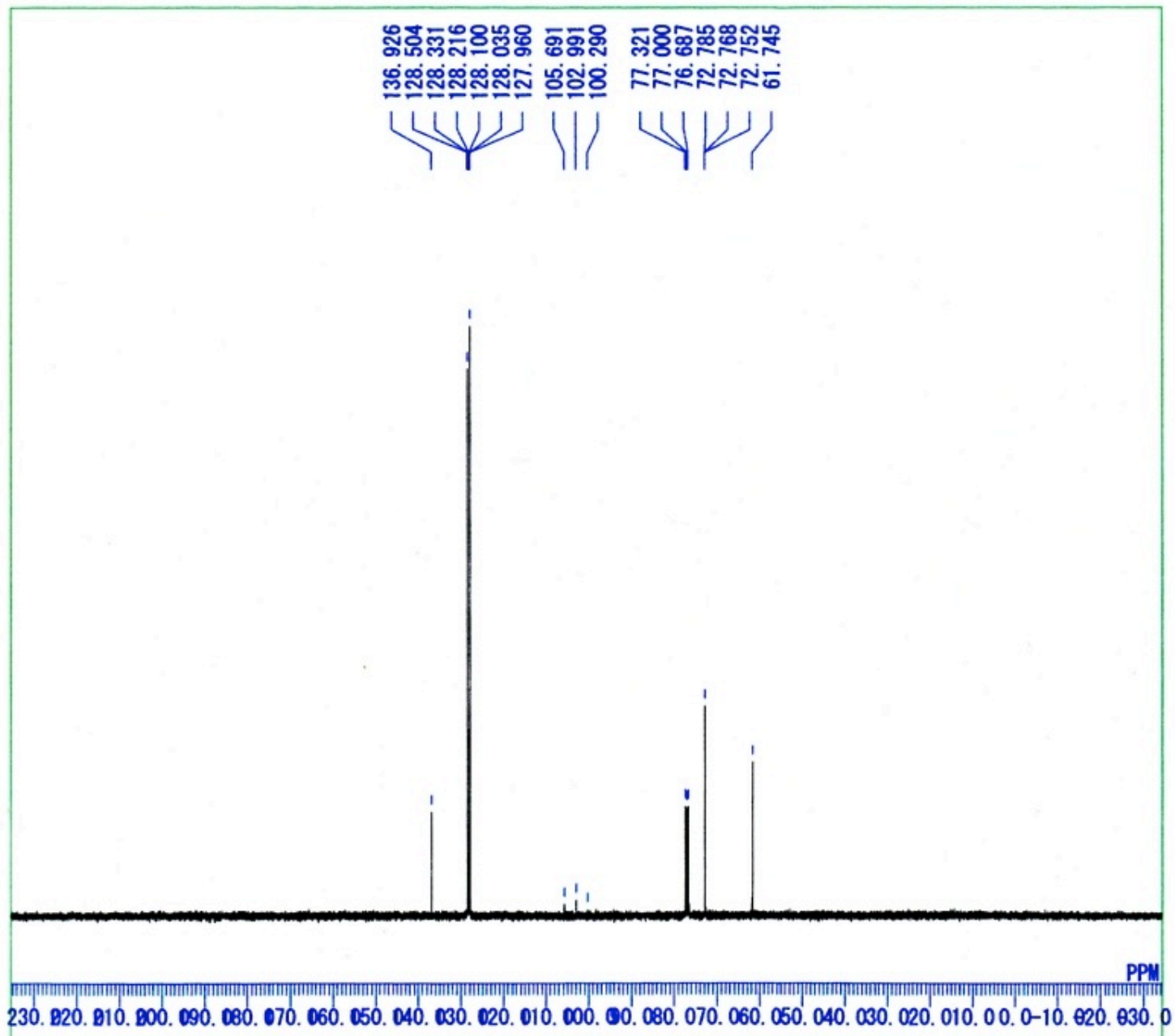
*Department of Chemistry and Materials Technology, Kyoto Institute of Technology, Matsugasaki, Sakyo-ku, Kyoto 606-8585, Japan*

E-mail: konno@kit.ac.jp, Fax: +81 75-724-7580



DFILE OBn OBn 1H. als  
 COMNT auto  
 DATIM Wed Dec 26 19:36:36 2012  
 OBNUC 1H  
 EXMOD NON  
 OBFRQ 399.65 MHz  
 OBSET 135.40 KHz  
 OBFIN 24.90 Hz  
 POINT 16384  
 FREQU 7992.01 Hz  
 SCANS 8  
 ACQTM 2.0501 sec  
 PD 4.9500 sec  
 PW1 5.50 usec  
 IRNUC 1H  
 CTEMP 21.6 c  
 SLVNT CDCL3  
 EXREF 7.26 ppm  
 BF 0.10 Hz  
 RGAIN 13

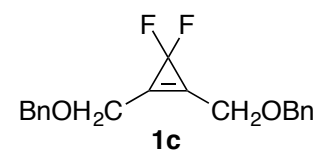


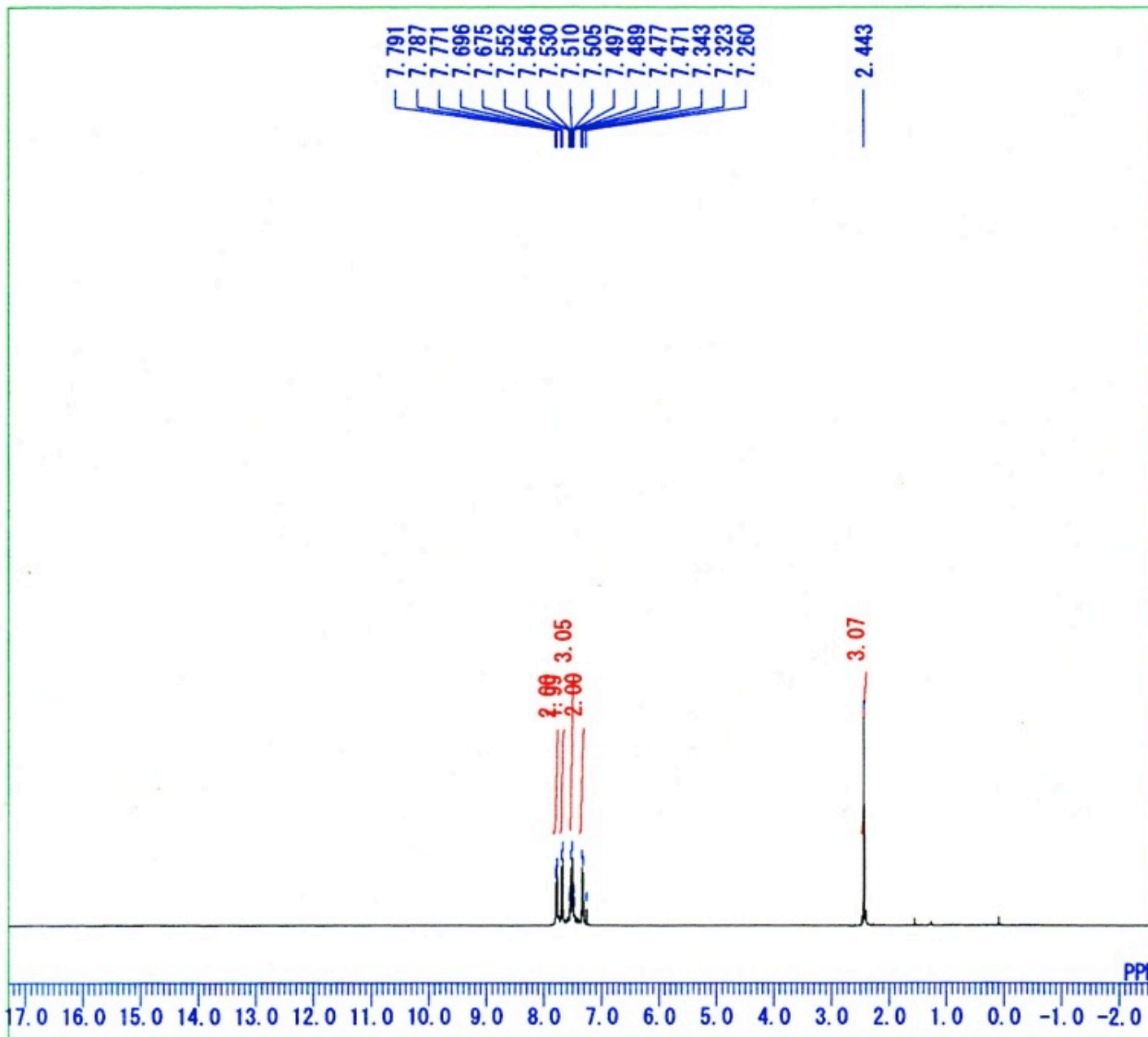


```

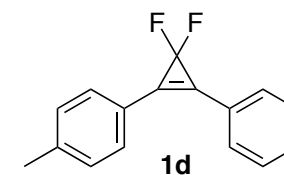
DFILE _DEFAULT. ALS
COMNT auto
DATIM Wed Dec 26 20:01:19 2012
OBNUC 13C
EXMOD BCM
OBFRQ 100.40 MHz
OBSET 125.00 KHz
OBFIN 10500.00 Hz
POINT 32768
FREQU 27118.64 Hz
SCANS 384
ACQTM 1.2083 sec
PD 1.7920 sec
PW1 6.20 usec
IRNUC 1H
CTEMP 22.1 c
SLVNT CDCL3
EXREF 77.00 ppm
BF 0.10 Hz
RGAIN 25

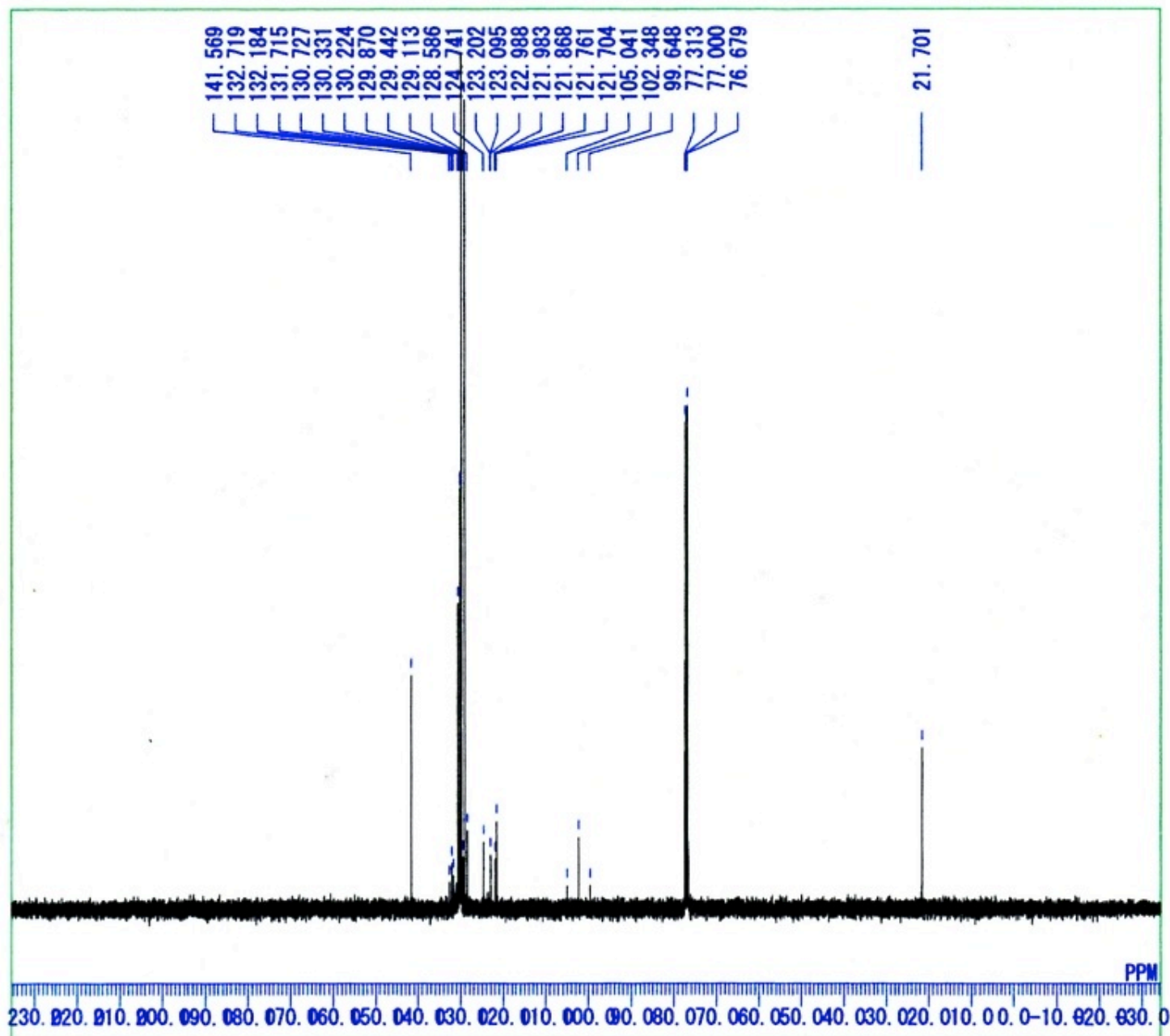
```



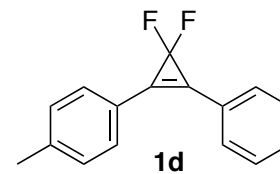


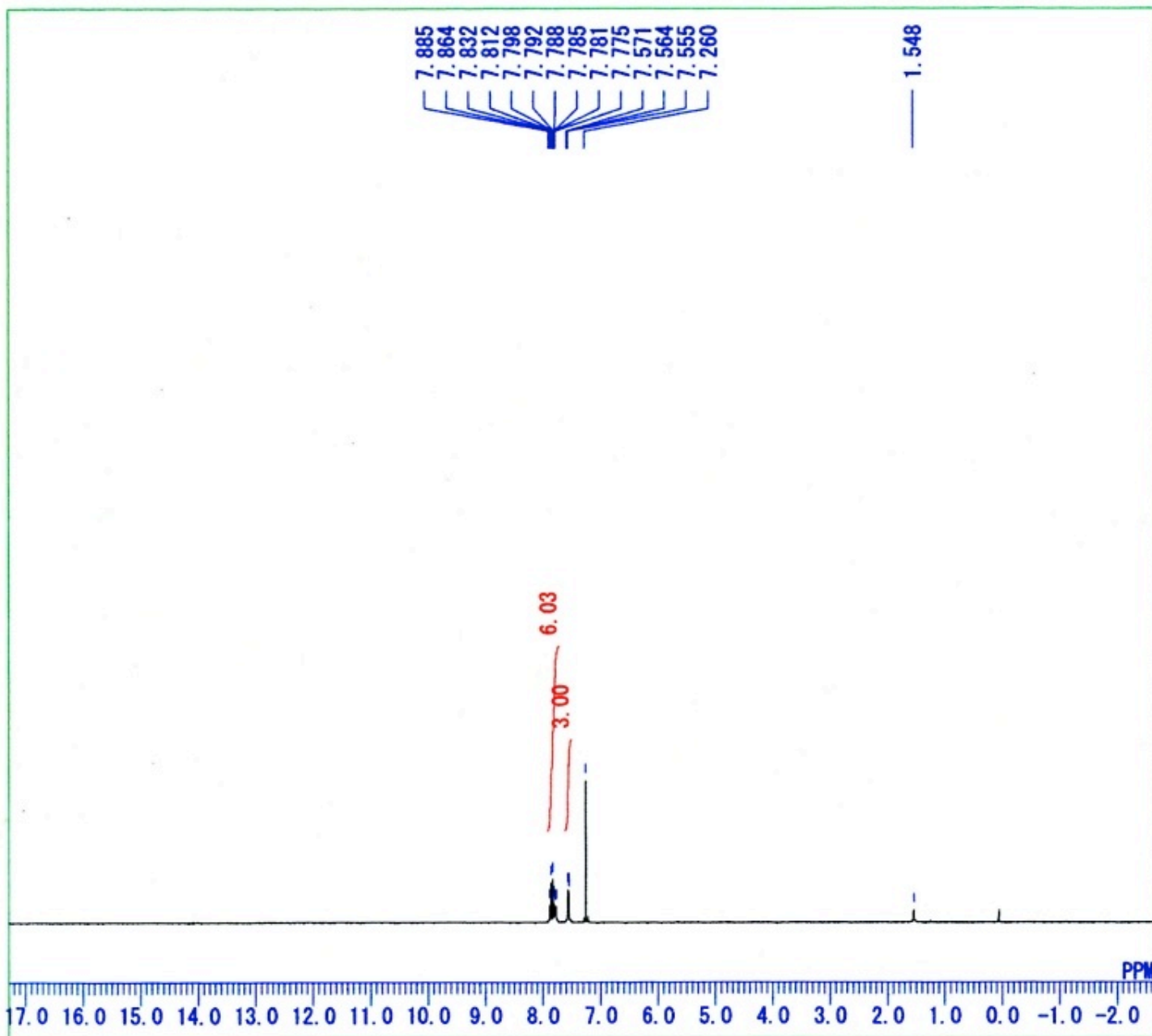
DFILE Ph Toly1 1H. als  
 COMNT auto  
 DATIM Thu Feb 21 18:30:21 2013  
 OBNUC 1H  
 EXMOD NON  
 OBFRQ 399.65 MHz  
 OBSET 135.40 KHz  
 OBFIN 24.90 Hz  
 POINT 16384  
 FREQU 7992.01 Hz  
 SCANS 8  
 ACQTM 2.0501 sec  
 PD 4.9500 sec  
 PW1 5.50 usec  
 IRNUC 1H  
 CTEMP 22.1 c  
 SLVNT CDCL3  
 EXREF 7.26 ppm  
 BF 0.10 Hz  
 RGAIN 14



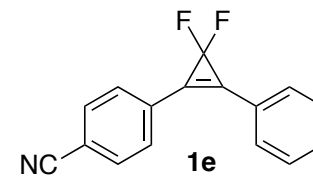


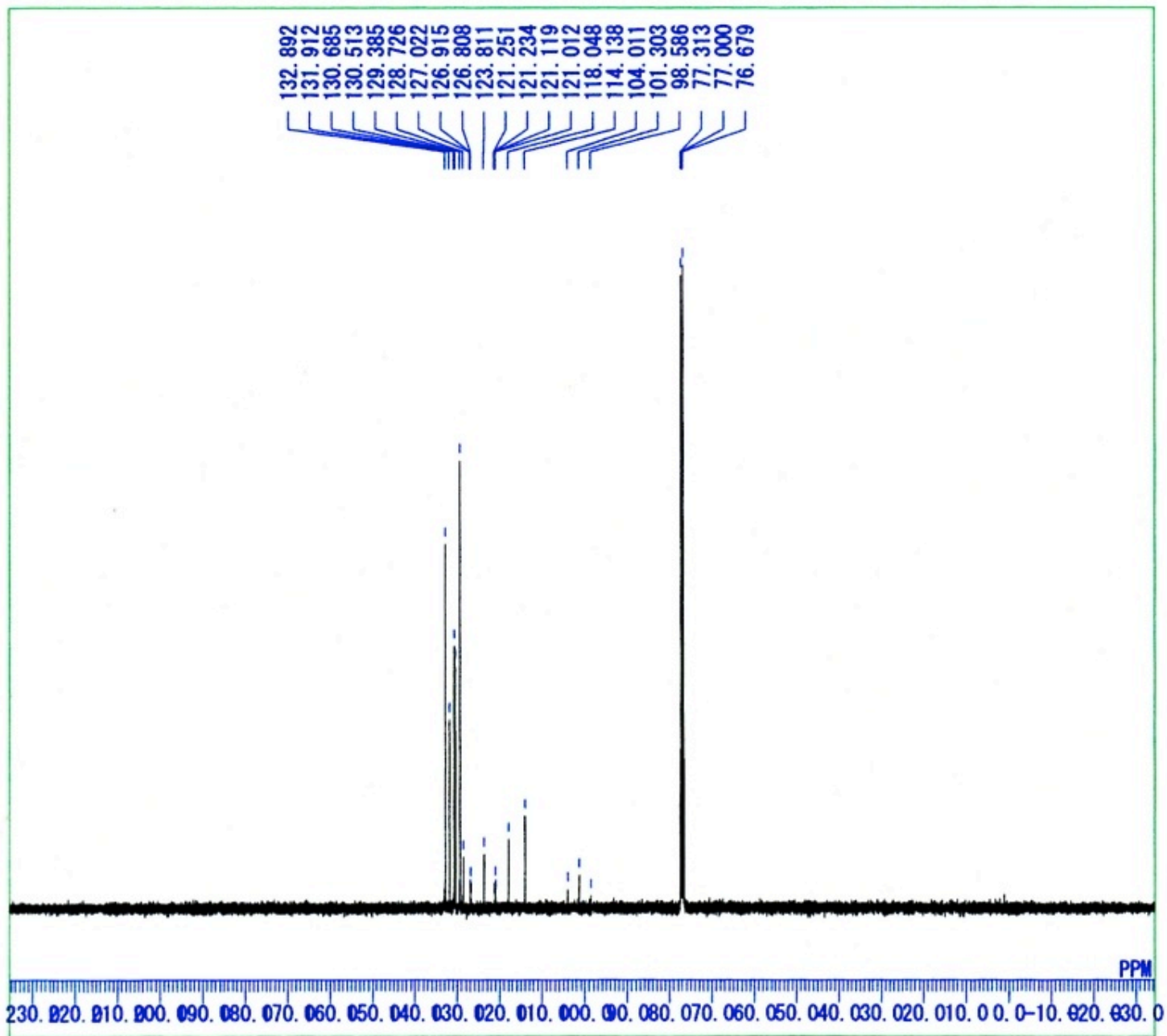
DFILE Ph Toly 13C. als  
COMNT auto  
DATIM Thu Feb 21 18:57:50 2013  
OBNUC 13C  
EXMOD BCM  
OBFRQ 100.40 MHz  
OBSET 125.00 KHz  
OBFIN 10500.00 Hz  
POINT 32768  
FREQU 27118.64 Hz  
SCANS 512  
ACQTM 1.2083 sec  
PD 1.7920 sec  
PW1 6.20 usec  
IRNUC 1H  
CTEMP 22.5 c  
SLVNT CDCL3  
EXREF 77.00 ppm  
BF 0.10 Hz  
RGAIN 25



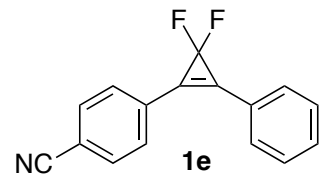


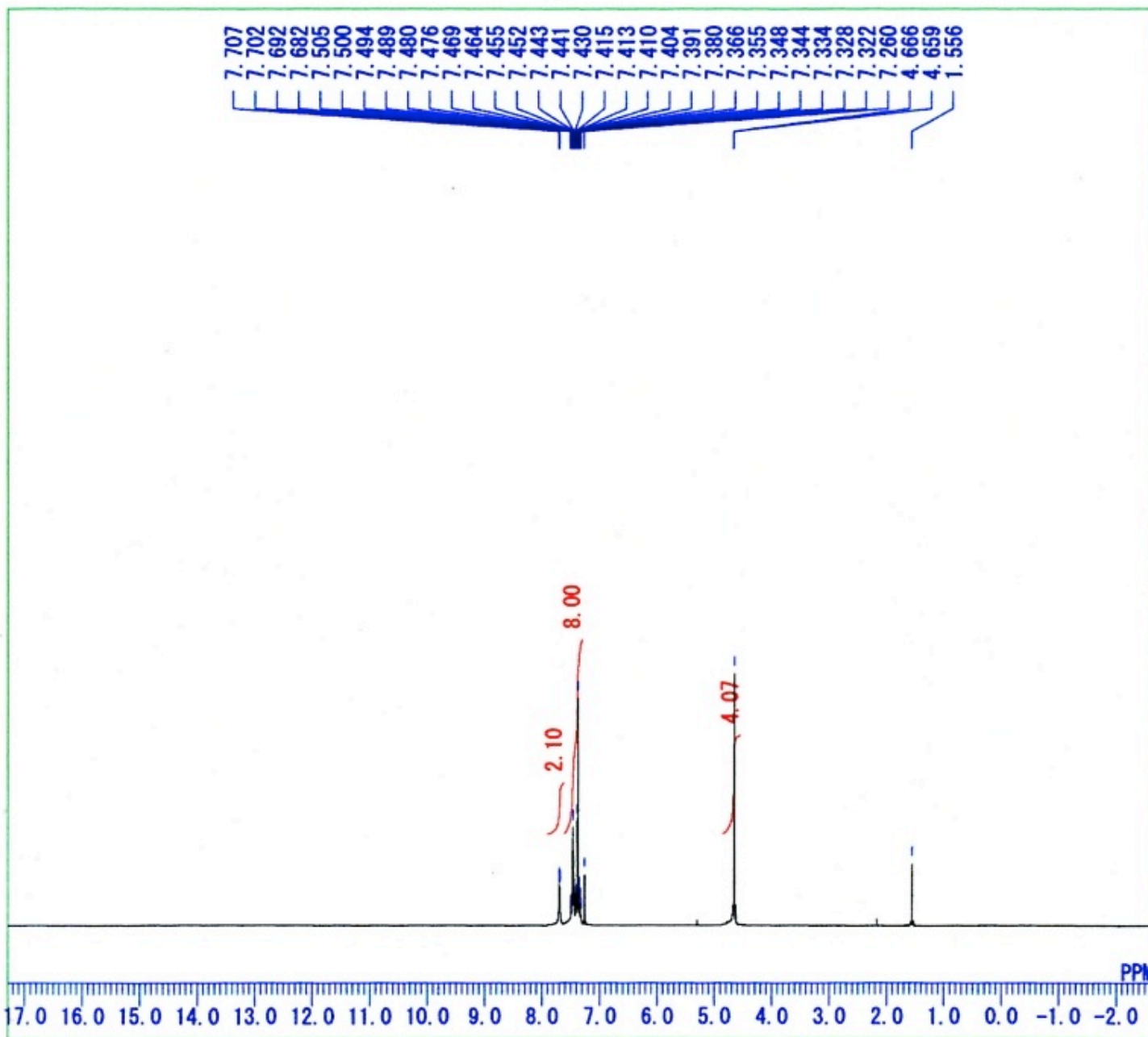
DFILE Ph C6H4CN 1H. als  
 COMNT auto  
 DATIM Wed Feb 20 16:58:39 2013  
 OBNUC 1H  
 EXMOD NON  
 OBFRQ 399.65 MHz  
 OBSET 135.40 KHz  
 OBFIN 24.90 Hz  
 POINT 16384  
 FREQU 7992.01 Hz  
 SCANS 8  
 ACQTM 2.0501 sec  
 PD 4.9500 sec  
 PW1 5.50 usec  
 IRNUC 1H  
 CTEMP 21.6 c  
 SLVNT CDCL3  
 EXREF 7.26 ppm  
 BF 0.10 Hz  
 RGAIN 24



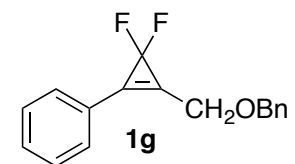


DFILE Ph C6H4CN 13C. als  
 COMNT auto  
 DATIM Wed Feb 20 19:15:57 2013  
 OBNUC 13C  
 EXMOD BCM  
 OBFRQ 100.40 MHz  
 OBSET 125.00 KHz  
 OBFIN 10500.00 Hz  
 POINT 32768  
 FREQU 27118.64 Hz  
 SCANS 2560  
 ACQTM 1.2083 sec  
 PD 1.7920 sec  
 PW1 6.20 usec  
 IRNUC 1H  
 CTEMP 22.2 c  
 SLVNT CDCL3  
 EXREF 77.00 ppm  
 BF 0.10 Hz  
 RGAIN 25

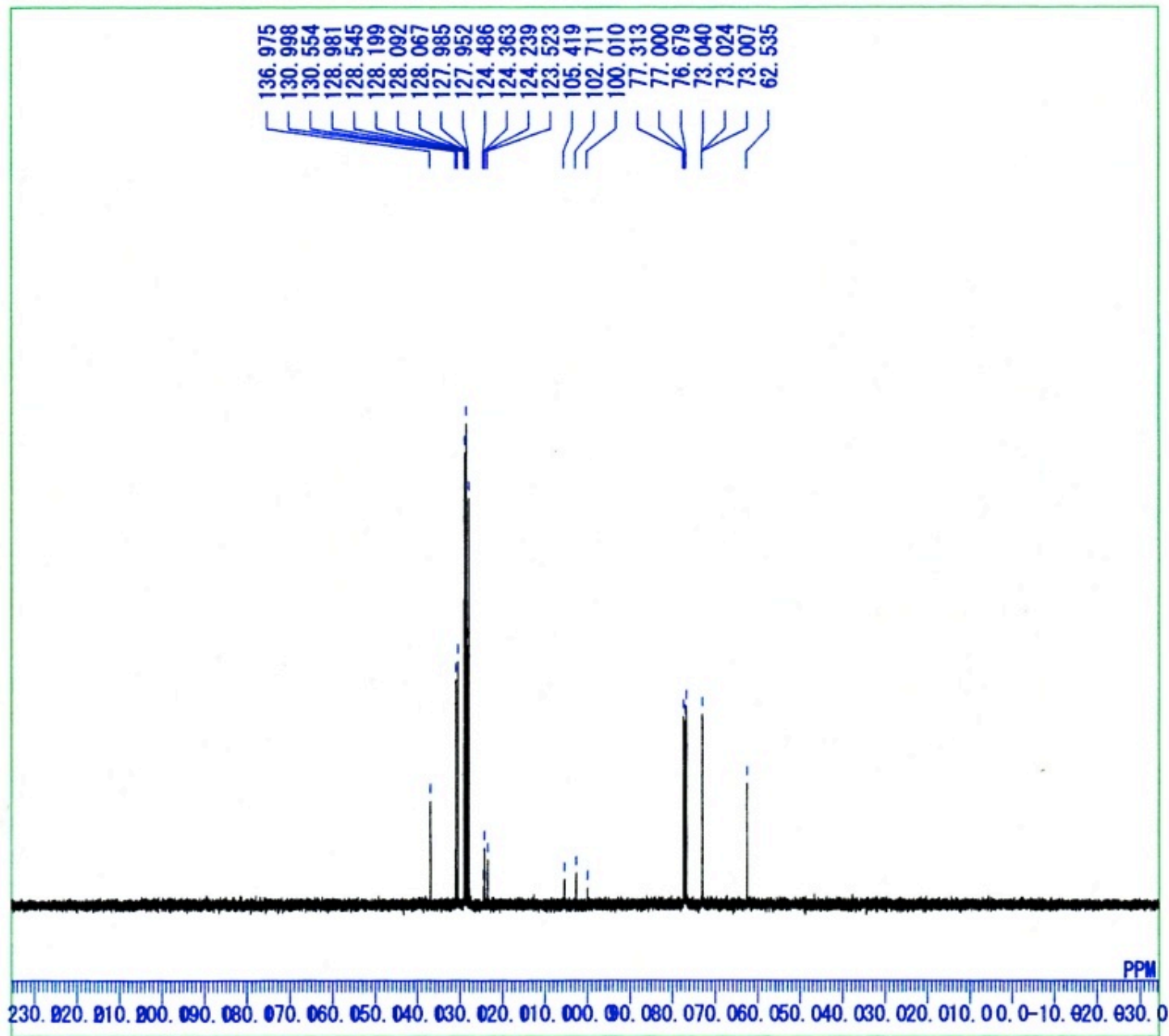




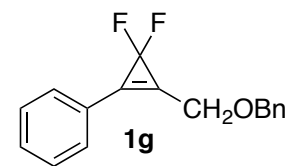
DFILE Ph OBn 1H. als  
 COMNT auto  
 DATIM Thu Sep 29 20:03:16 2011  
 OBNUC 1H  
 EXMOD NON  
 OBFREQ 399.65 MHz  
 OBSET 135.40 KHz  
 OBFIN 24.90 Hz  
 POINT 16384  
 FREQU 7992.01 Hz  
 SCANS 8  
 ACQTM 2.0501 sec  
 PD 4.9500 sec  
 PW1 5.50 usec  
 IRNUC 1H  
 CTEMP 22.0 c  
 SLVNT CDCL3  
 EXREF 7.26 ppm  
 BF 0.10 Hz  
 RGAIN 17

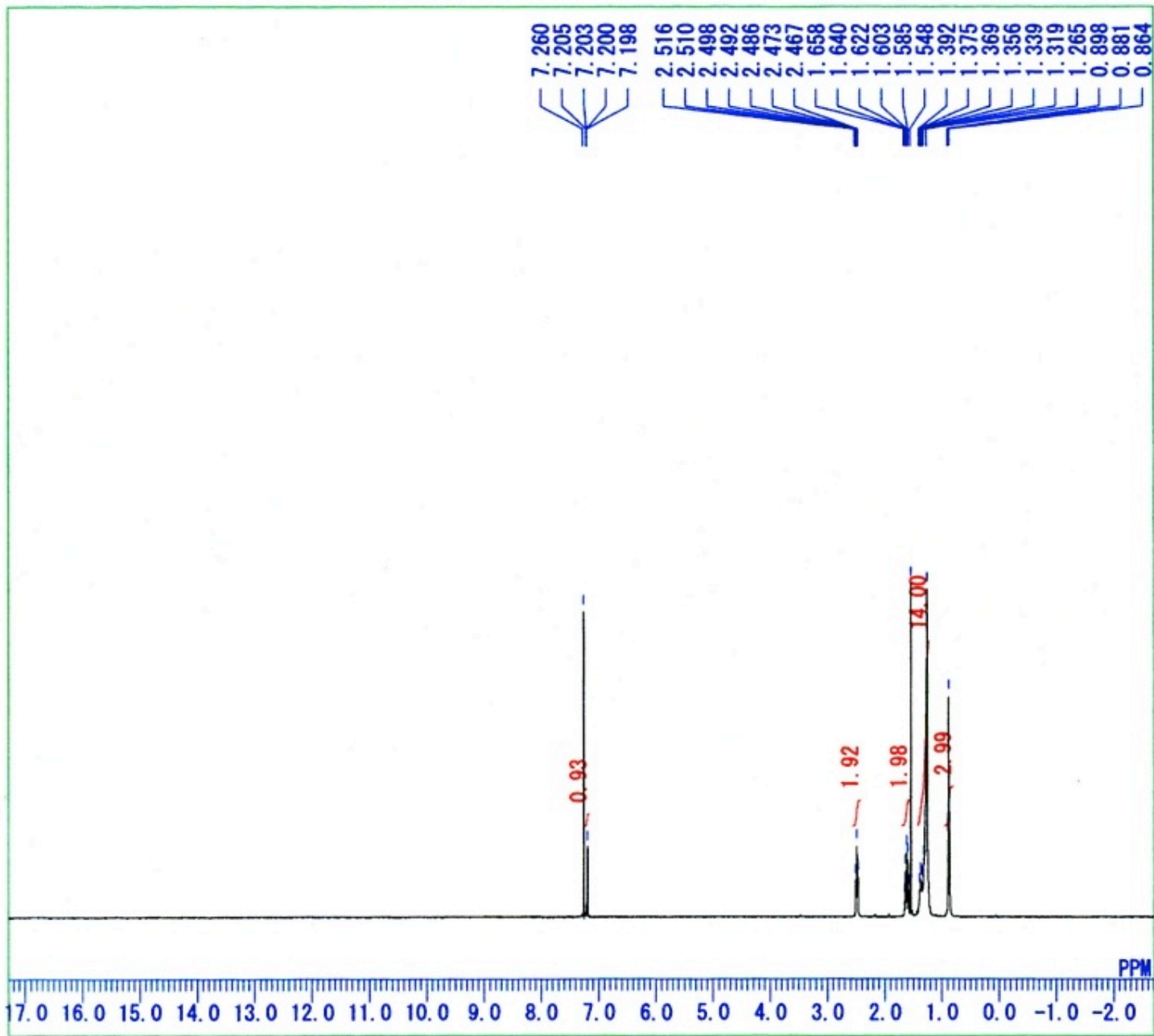




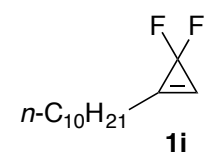


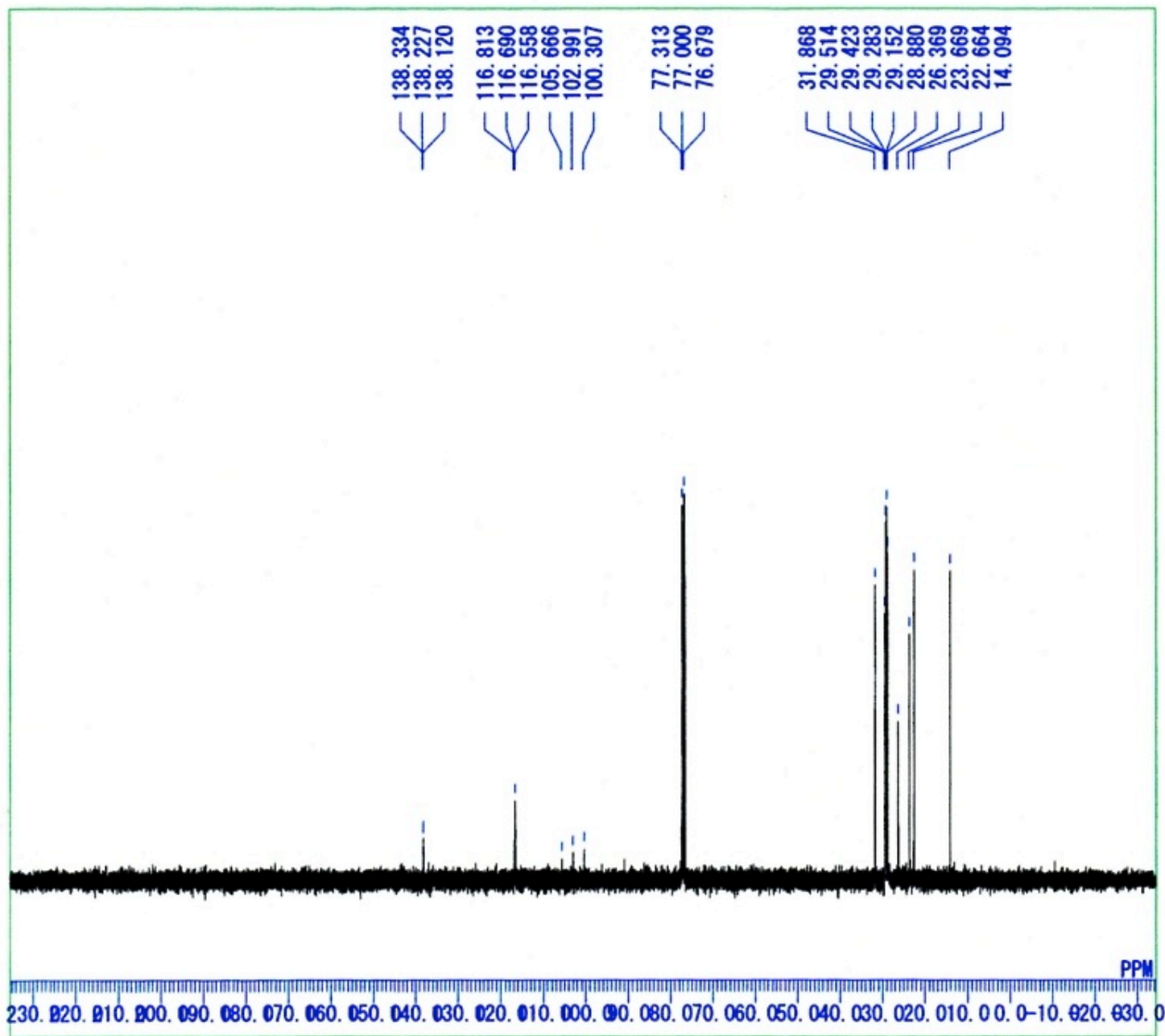
DFILE Ph OBn 13C. als  
 COMNT auto  
 DATIM Wed Dec 26 16:44:08 2012  
 OBNUC 13C  
 EXMOD BCM  
 OBFRQ 100.40 MHz  
 OBSET 125.00 KHz  
 OBFIN 10500.00 Hz  
 POINT 32768  
 FREQU 27118.64 Hz  
 SCANS 256  
 ACQTM 1.2083 sec  
 PD 1.7920 sec  
 PW1 6.20 usec  
 IRNUC 1H  
 CTEMP 22.8 c  
 SLVNT CDCL3  
 EXREF 77.00 ppm  
 BF 0.10 Hz  
 RGAIN 25



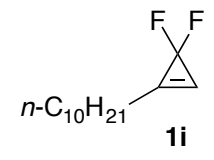


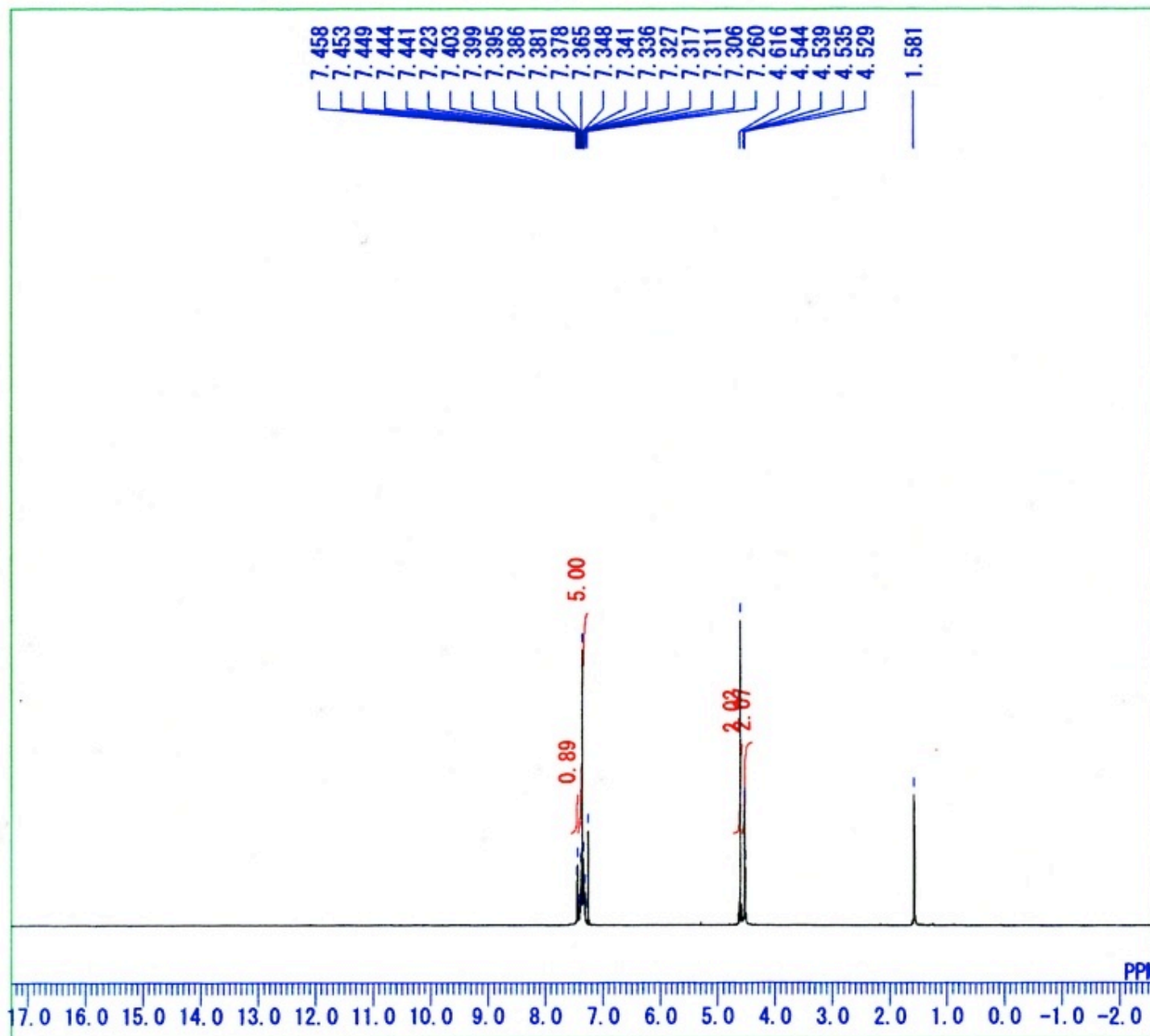
DFILE C10H21 1H.als  
 COMNT auto  
 DATIM Tue Jul 03 13:23:14 2012  
 OBNUC 1H  
 EXMOD NON  
 OBFRQ 399.65 MHz  
 OBSET 135.40 KHz  
 OBFIN 24.90 Hz  
 POINT 16384  
 FREQU 7992.01 Hz  
 SCANS 8  
 ACQTM 2.0501 sec  
 PD 4.9500 sec  
 PW1 5.50 usec  
 IRNUC 1H  
 CTEMP 22.1 c  
 SLVNT CDCL3  
 EXREF 7.26 ppm  
 BF 0.10 Hz  
 RGAIN 17



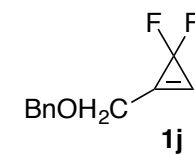


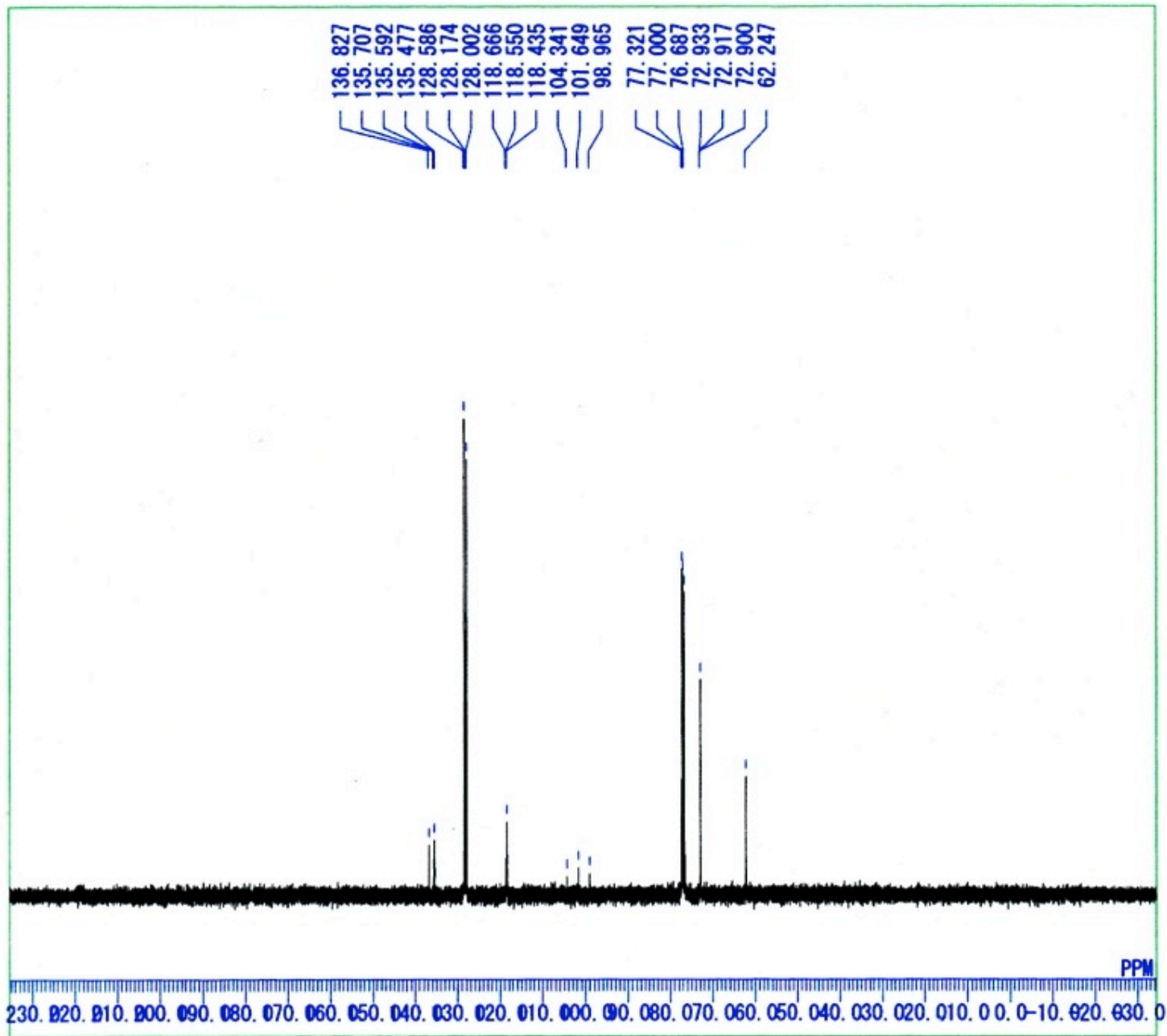
DFILE C10H21 13C new. als  
 COMNT auto  
 DATIM Wed Dec 26 20:44:08 2012  
 OBNUC 13C  
 EXMOD BCM  
 OBFREQ 100.40 MHz  
 OBSET 125.00 KHz  
 OBFIN 10500.00 Hz  
 POINT 32768  
 FREQU 27118.64 Hz  
 SCANS 256  
 ACQTM 1.2083 sec  
 PD 1.7920 sec  
 PW1 6.20 usec  
 IRNUC 1H  
 CTEMP 22.1 c  
 SLVNT CDCL3  
 EXREF 77.00 ppm  
 BF 0.10 Hz  
 RGAIN 25





DFILE OBn H 1H. als  
 COMNT auto  
 DATIM Thu Sep 22 18:52:25 2011  
 OBNUC 1H  
 EXMOD NON  
 OBFRQ 399.65 MHz  
 OBSET 135.40 KHz  
 OBFIN 24.90 Hz  
 POINT 16384  
 FREQU 7992.01 Hz  
 SCANS 8  
 ACQTM 2.0501 sec  
 PD 4.9500 sec  
 PW1 5.50 usec  
 IRNUC 1H  
 CTEMP 21.9 c  
 SLVNT CDCL3  
 EXREF 7.26 ppm  
 BF 0.10 Hz  
 RGAIN 17





DFILE OBn H 13C. als  
 COMNT auto  
 DATIM Wed Dec 26 17:26:32 2012  
 OBNUC 13C  
 EXMOD BCM  
 OBFRQ 100.40 MHz  
 OBSET 125.00 KHz  
 OBFIN 10500.00 Hz  
 POINT 32768  
 FREQU 27118.64 Hz  
 SCANS 384  
 ACQTM 1.2083 sec  
 PD 1.7920 sec  
 PW1 6.20 usec  
 IRNUC 1H  
 CTEMP 22.1 c  
 SLVNT CDCL3  
 EXREF 77.00 ppm  
 BF 0.10 Hz  
 RGAIN 25

