

Supporting information

Diastereoselective Synthesis of Pitavastatin Calcium via Bismuth-catalyzed Two-component Hemiacetal/oxa-Michael Addition Reaction

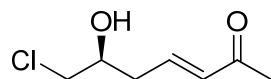
Fangjun Xiong, Haifeng Wang, Lingjie Yan, Lingjun Xu, Yuan Tao, Yan Wu*, and Fener Chen*

Department of Chemistry, Fudan University, 220 Handan Road, Shanghai, 200433, People's Republic of China

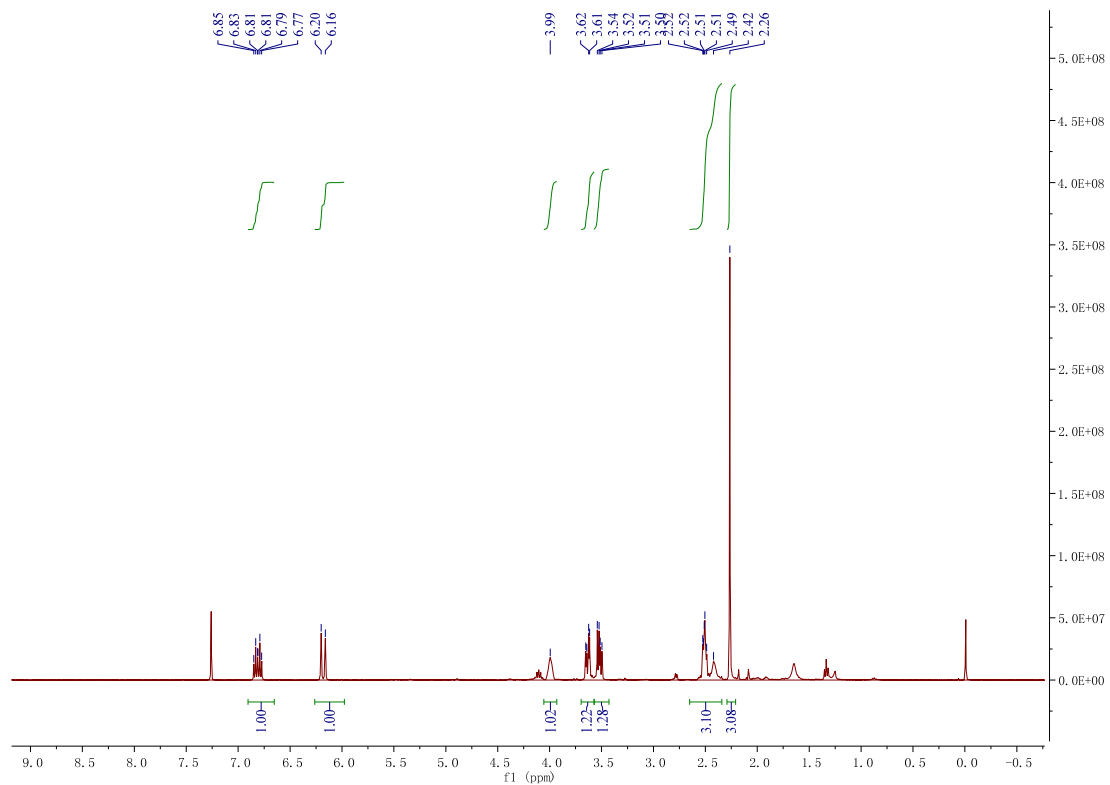
* E-mail: rfchen@fudan.edu.cn (Fener Chen)

* E-mail: wywin8@163.com (Yan Wu)

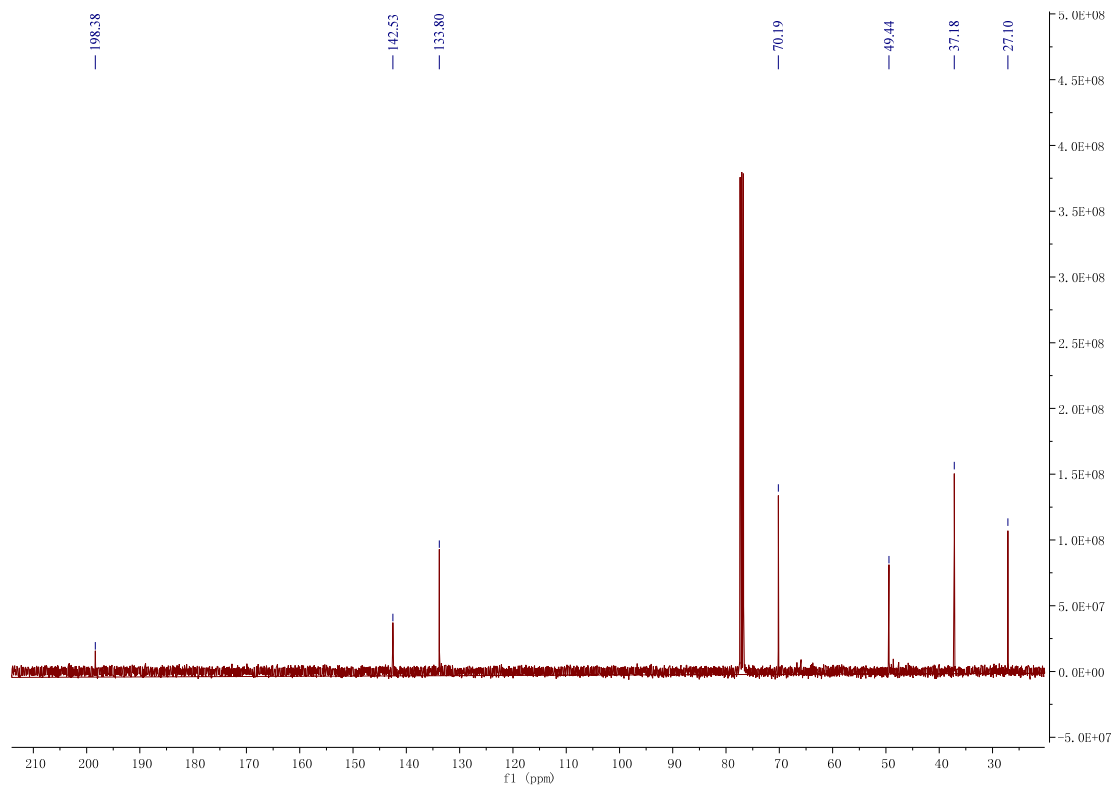
Spectral Data

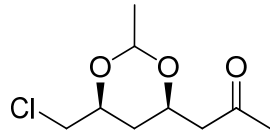


¹H NMR

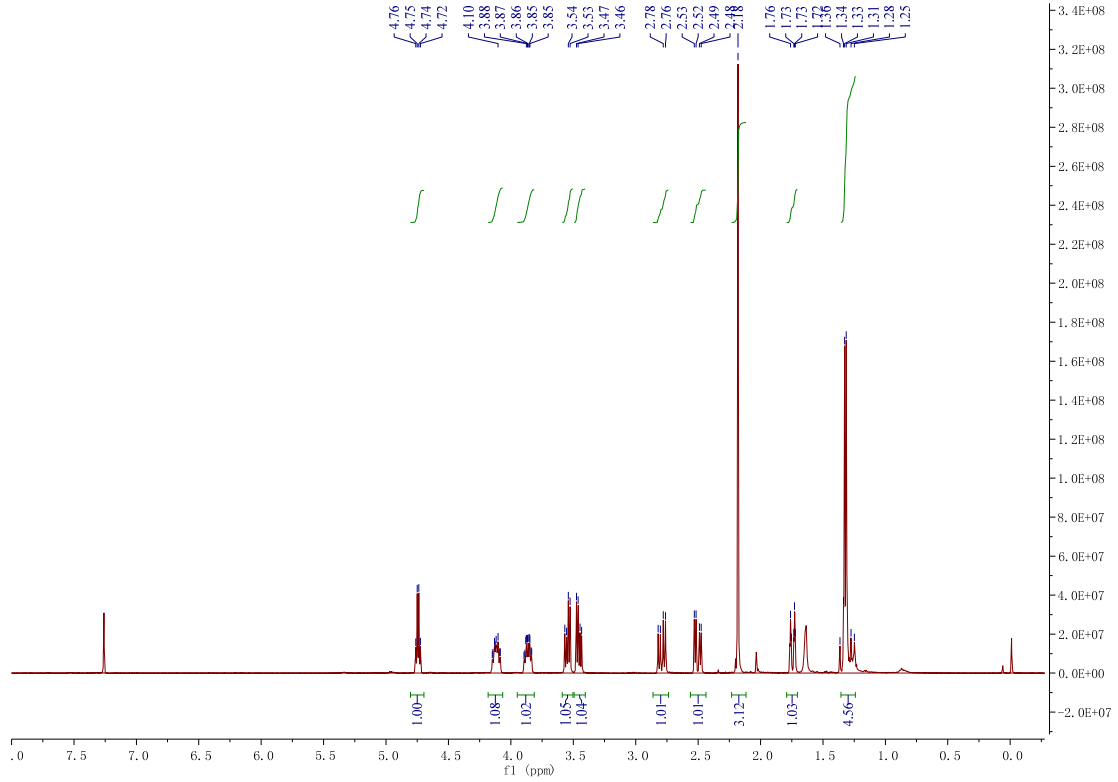


¹³C NMR

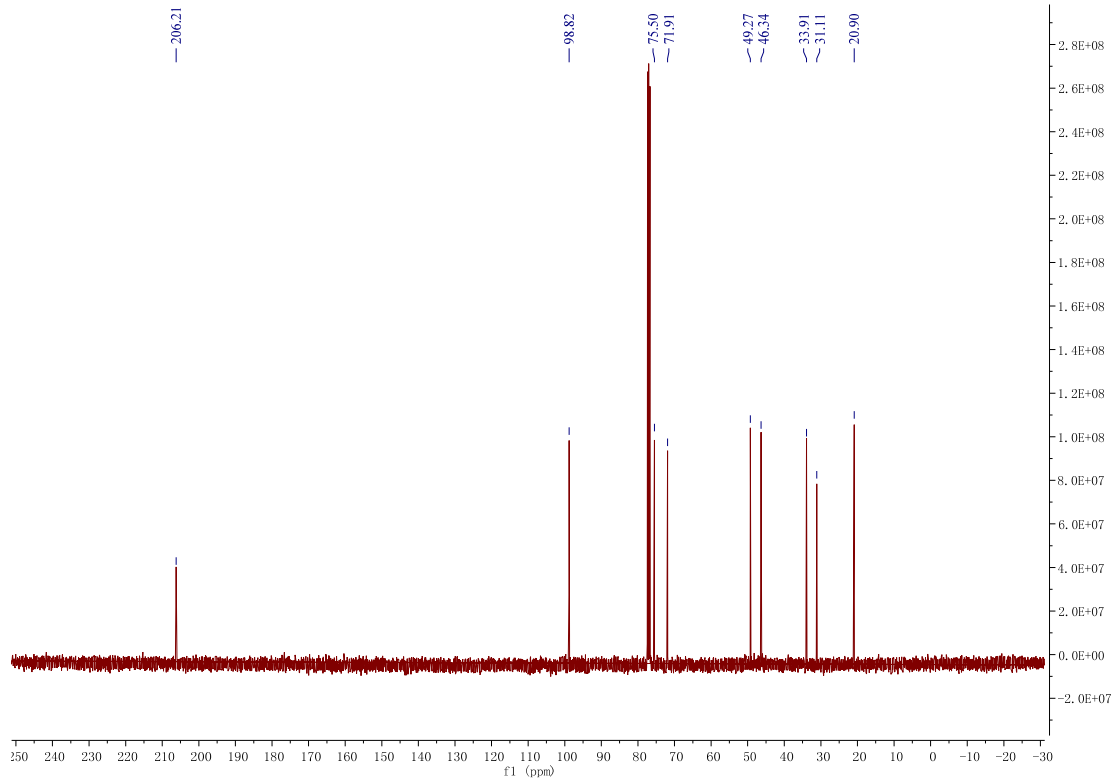


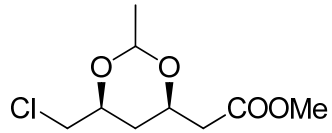


HNMR

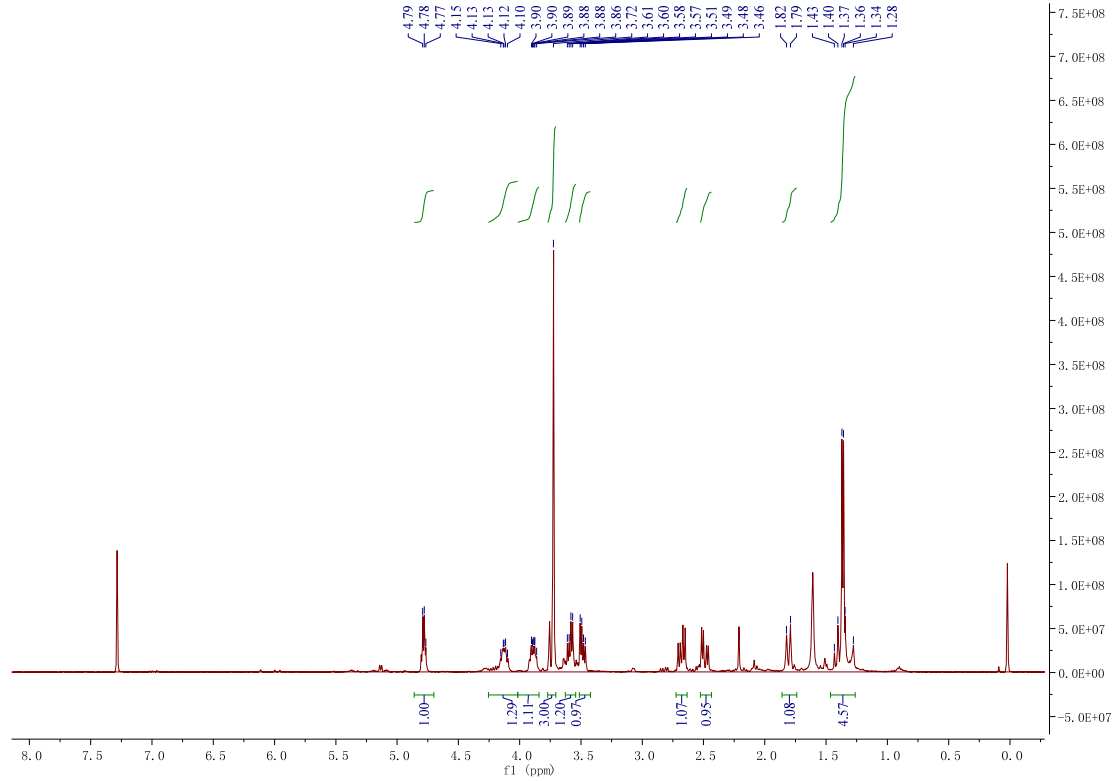


CNMR

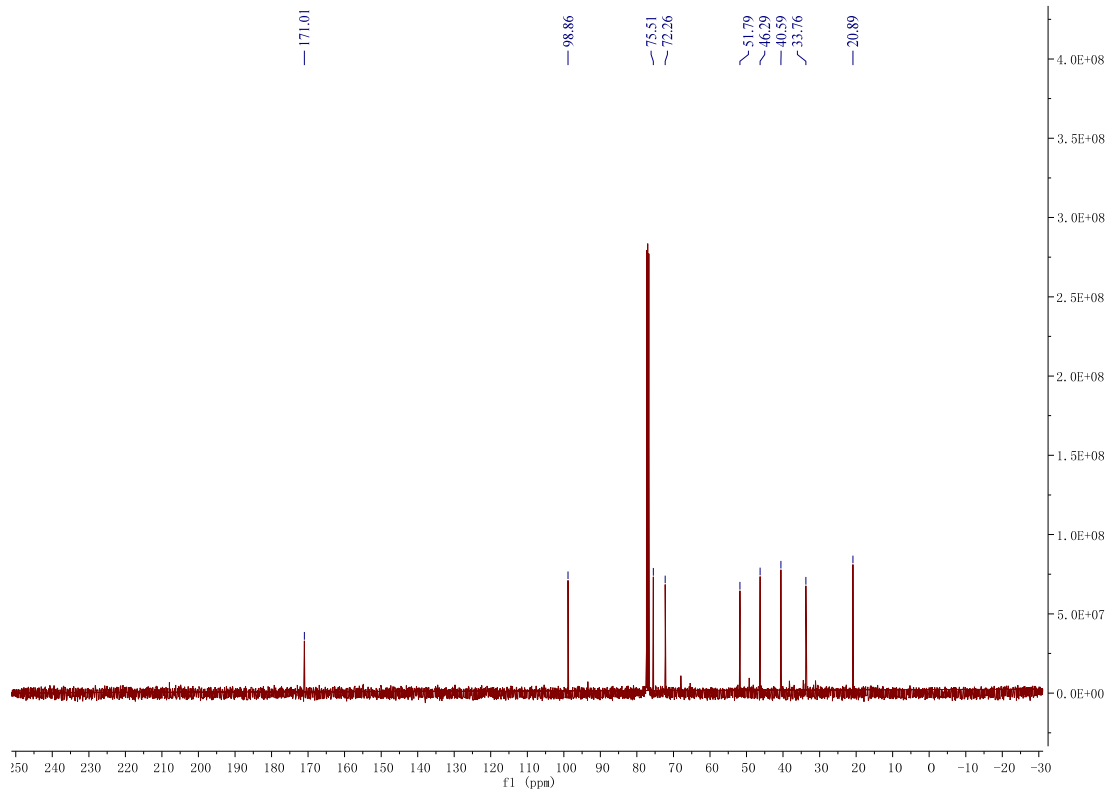


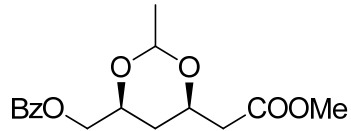


HNMR

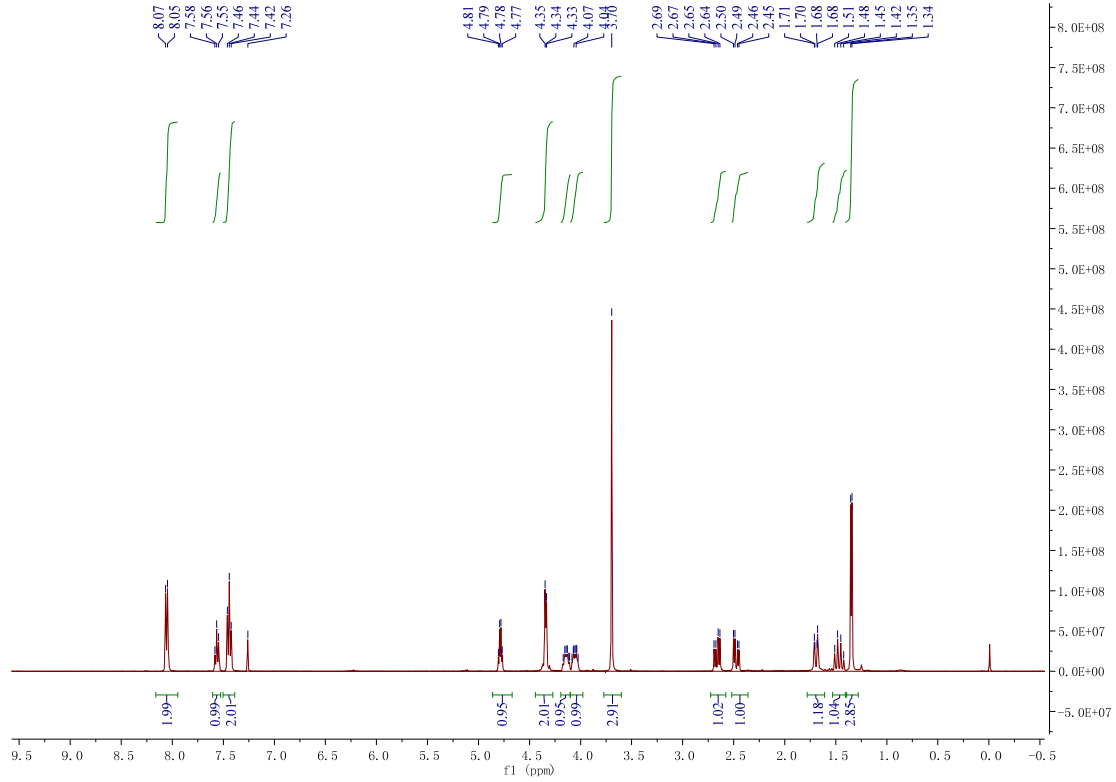


CNMR

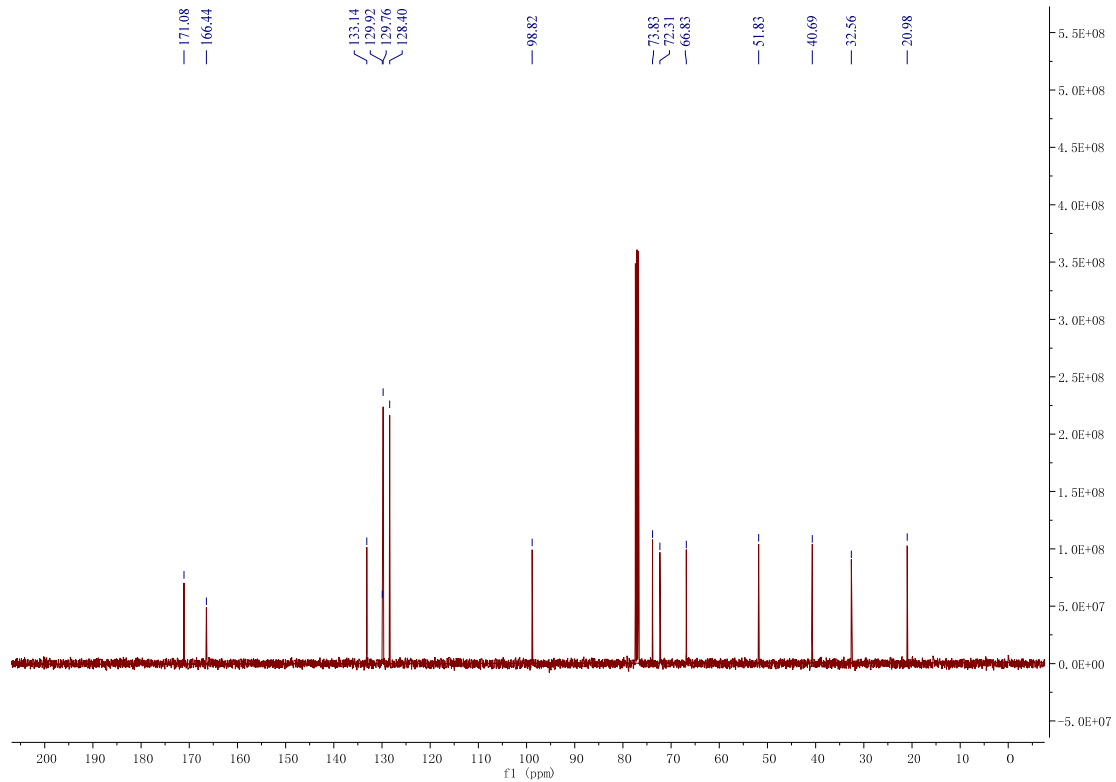


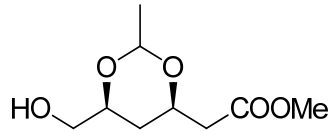


HNMR

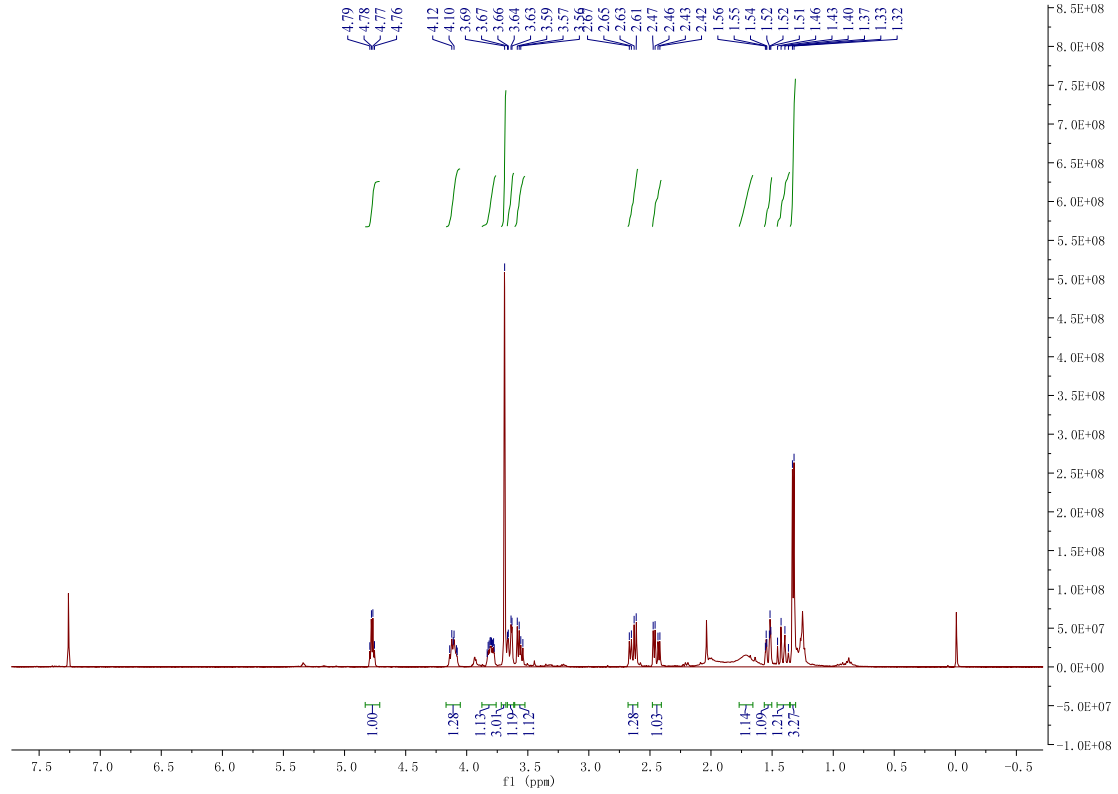


CNMR

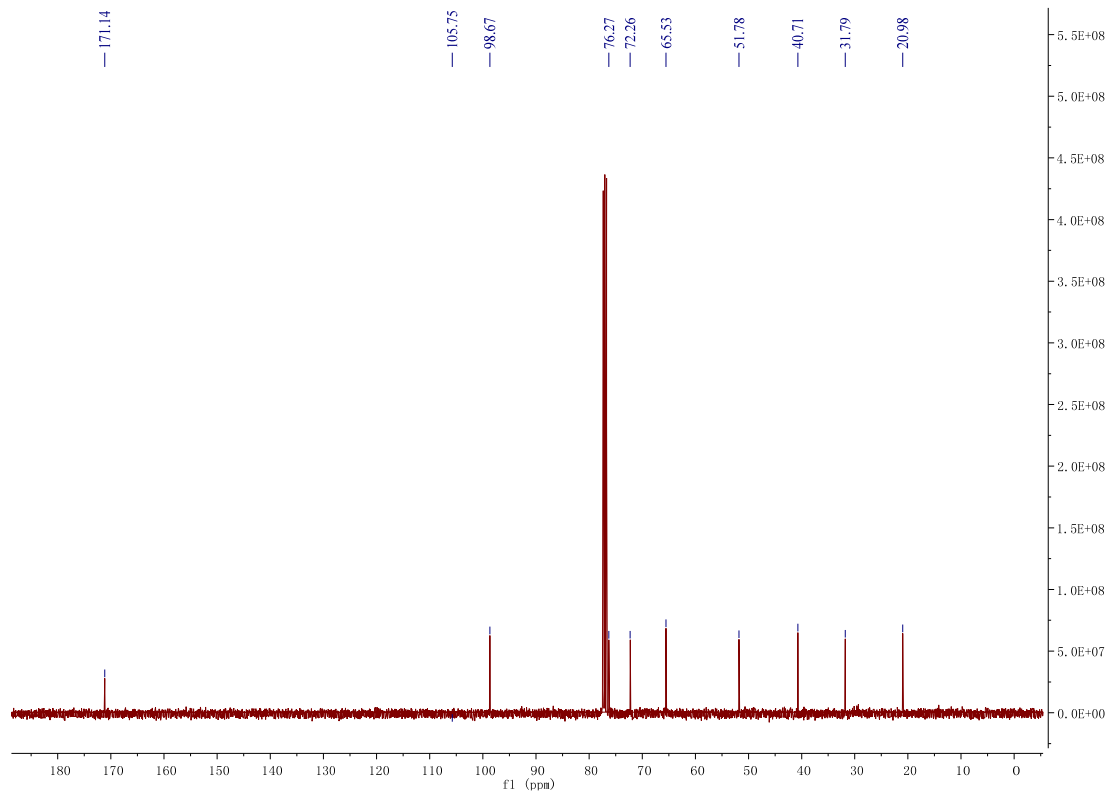


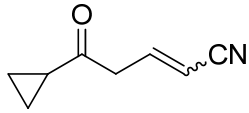


HNMR

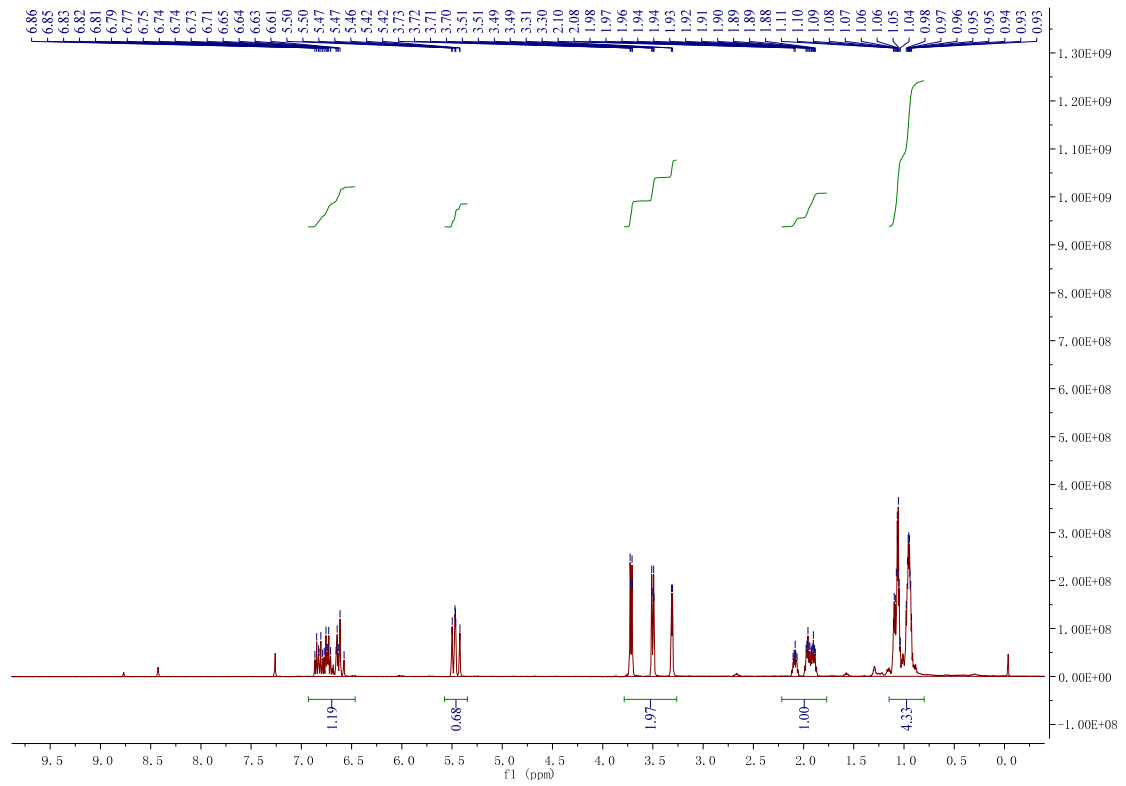


CNMR

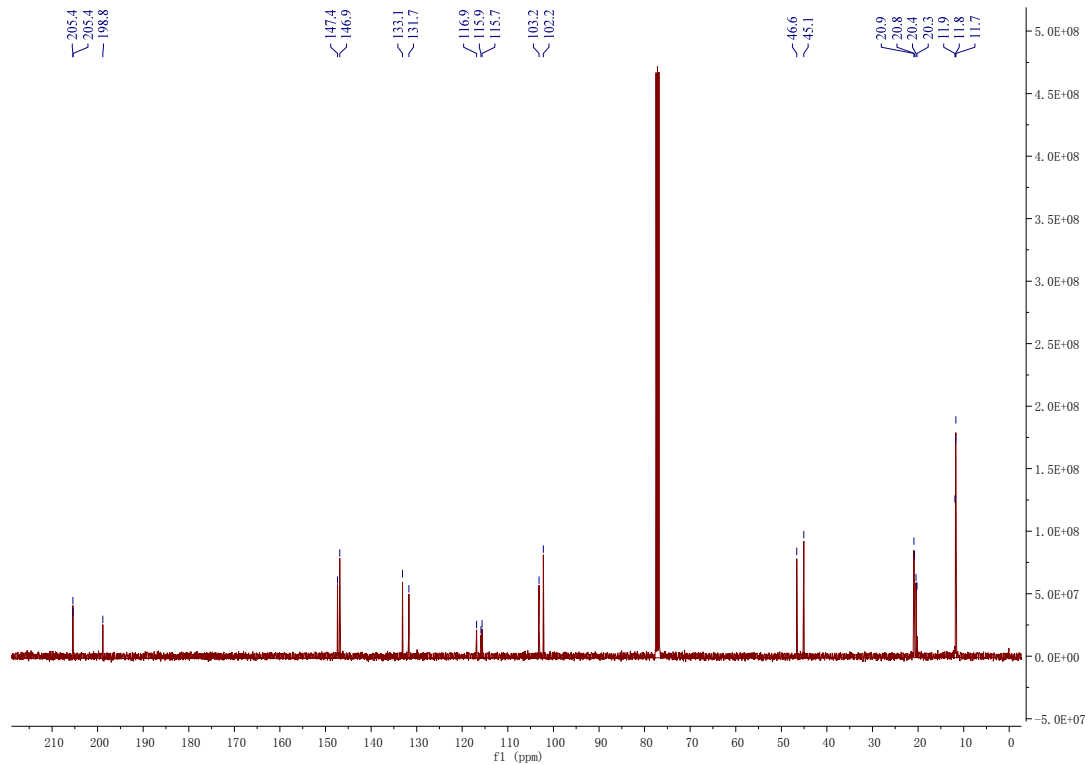


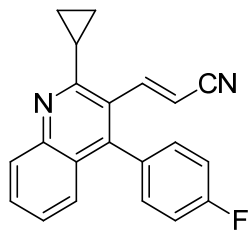


HNMR

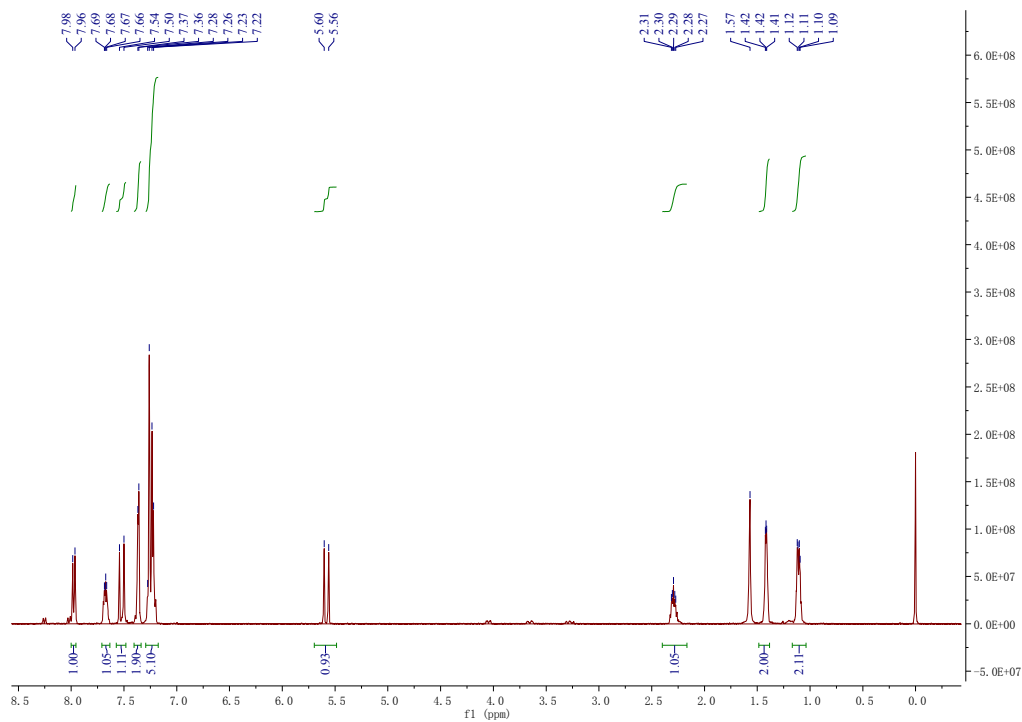


CNMR

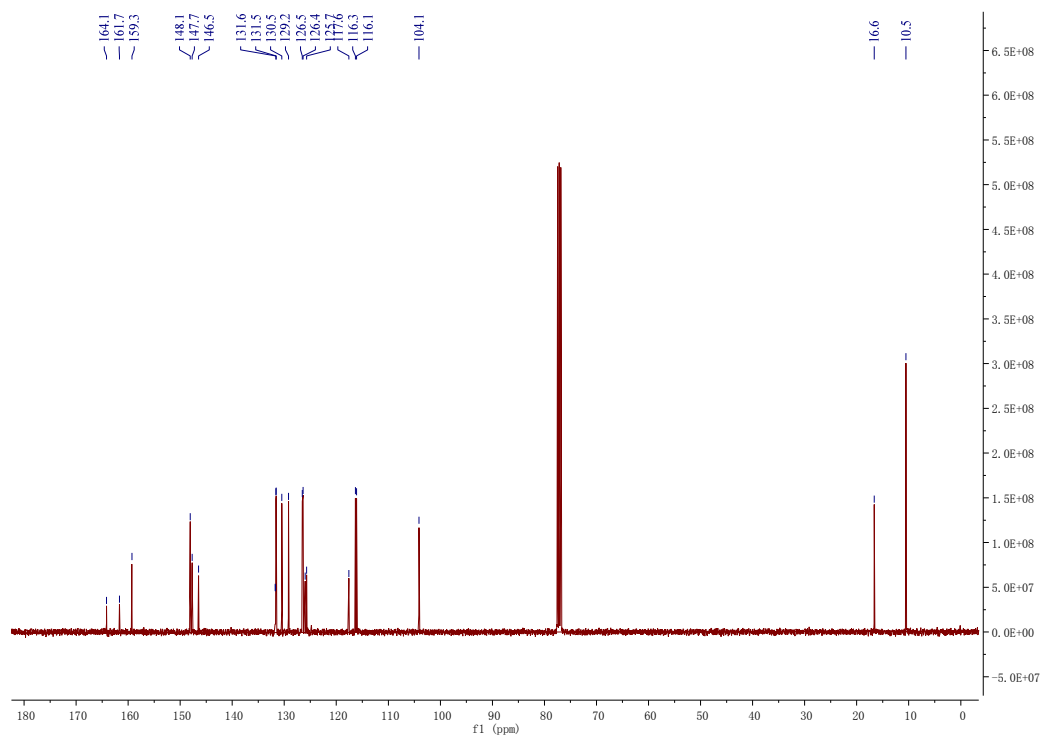


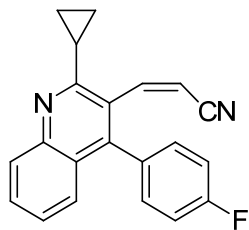


HNMR

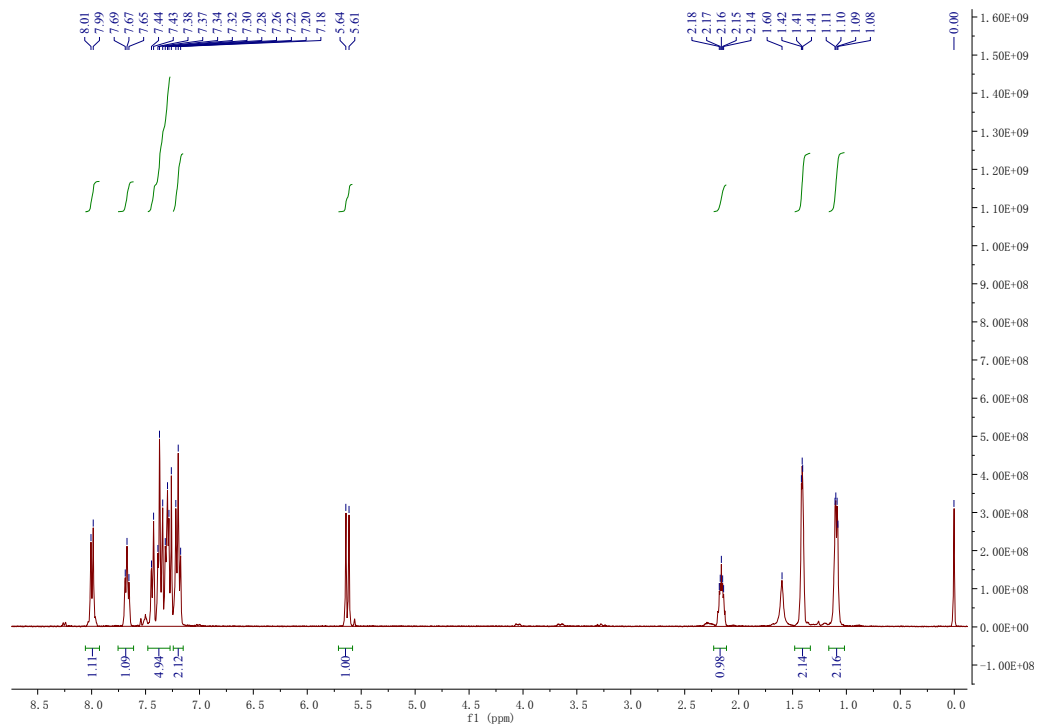


CNMR

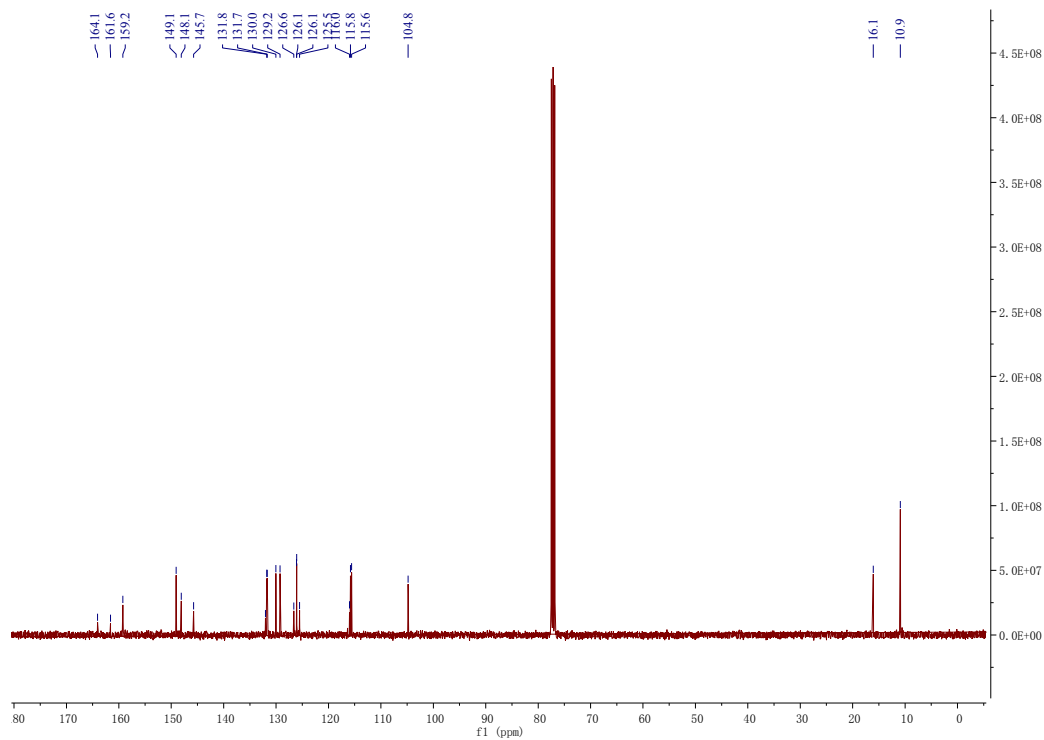


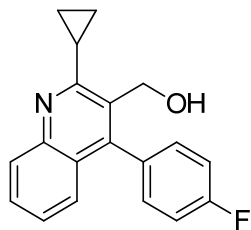


HNMR

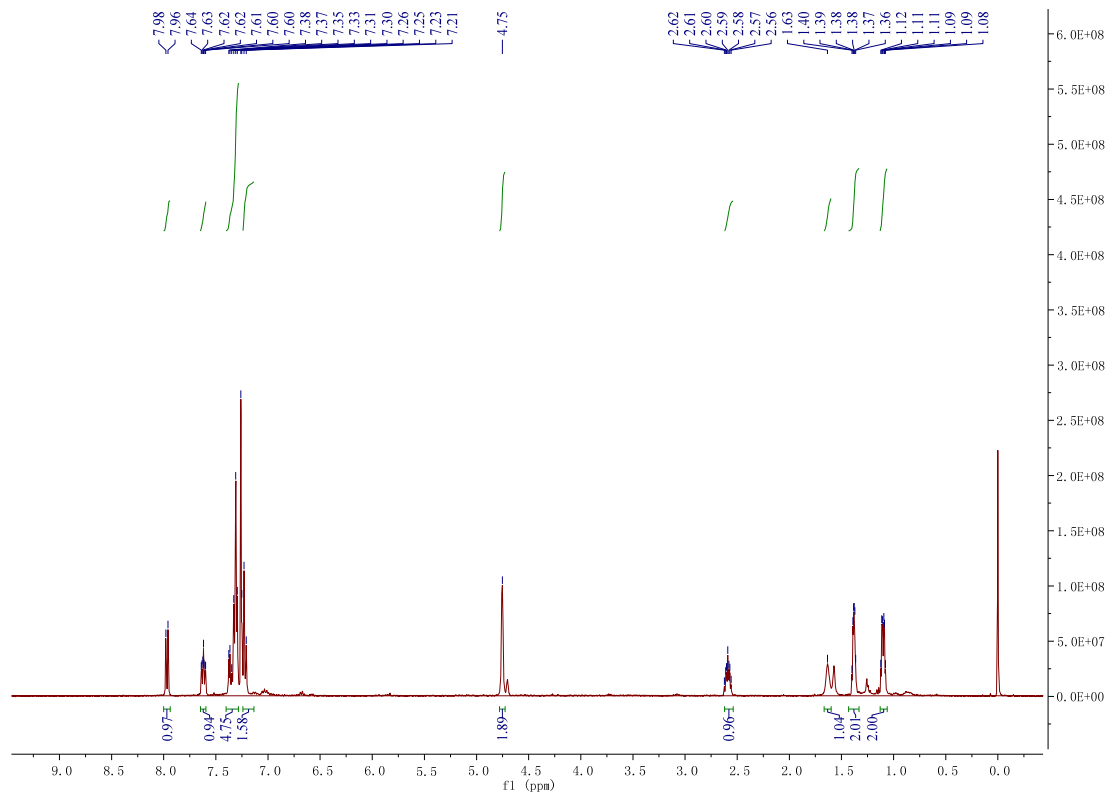


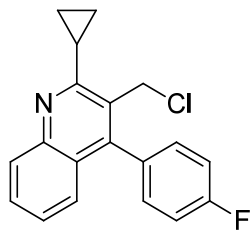
CNMR



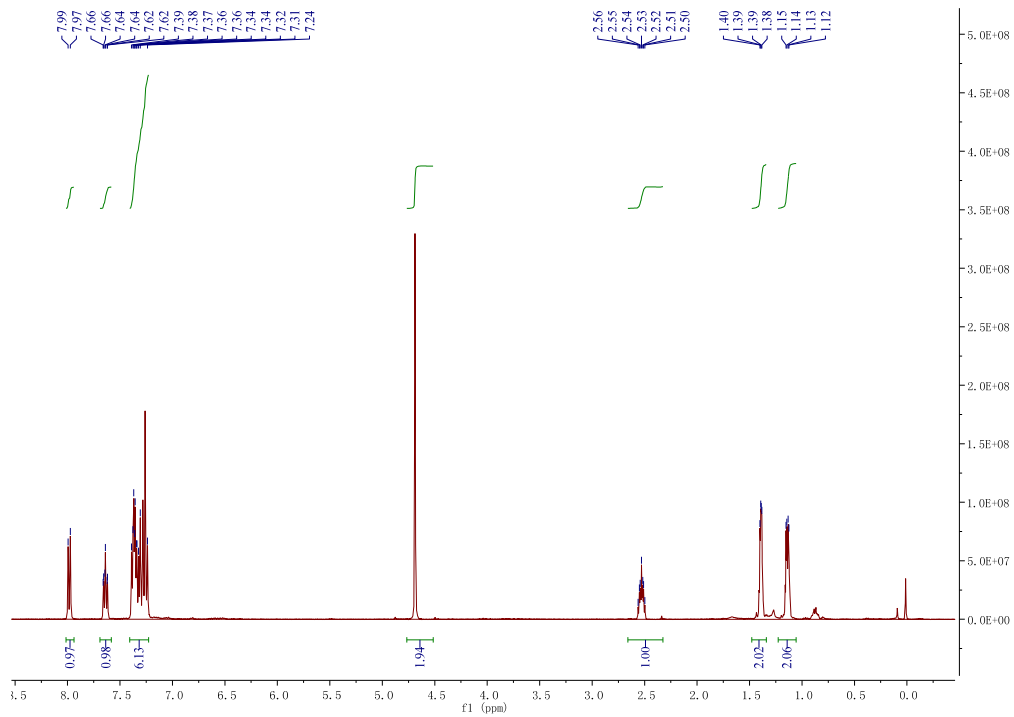


HNMR

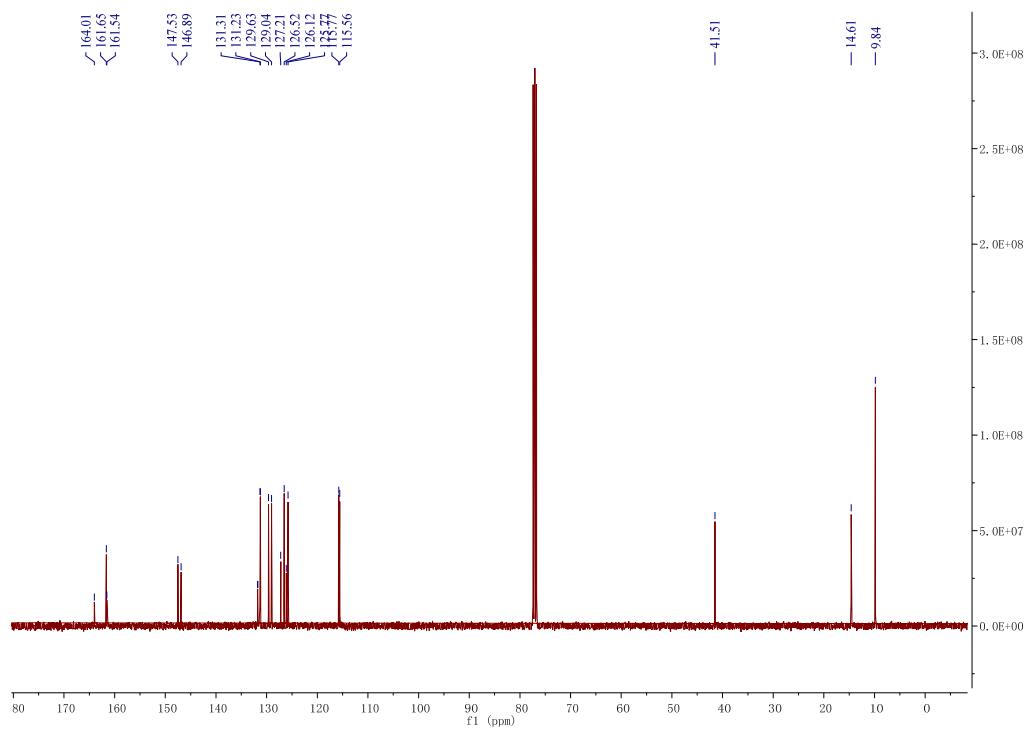


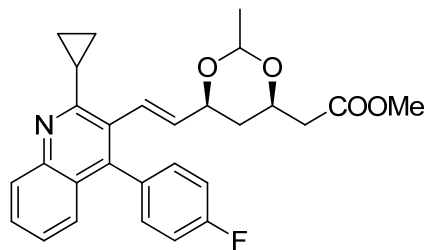


HNMR

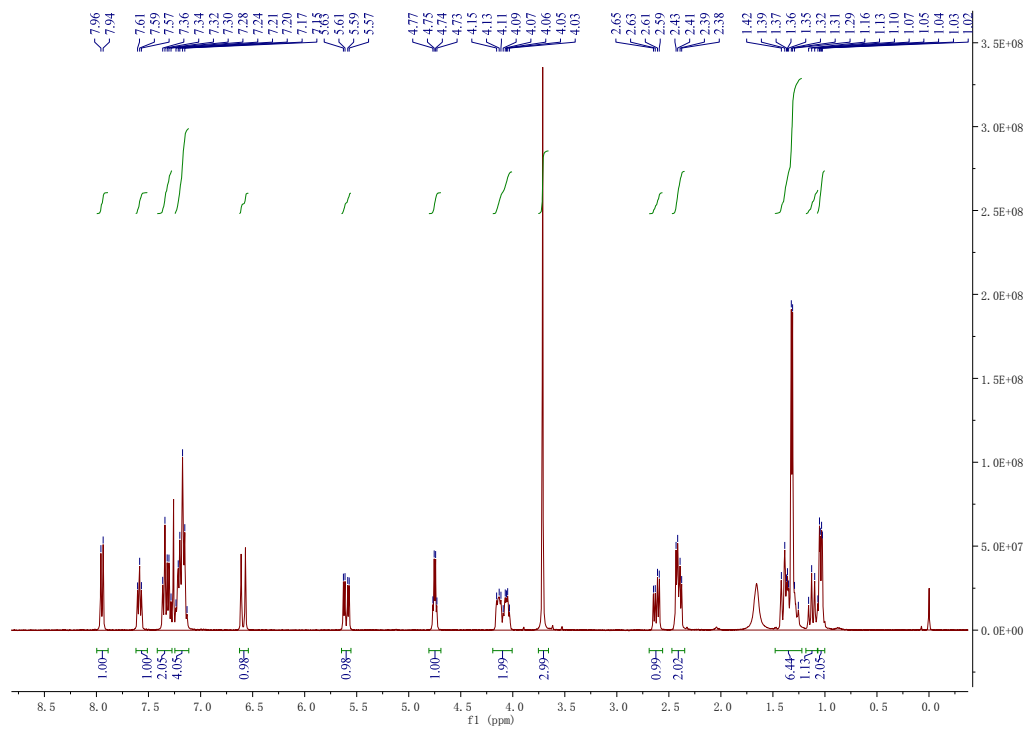


CNMR

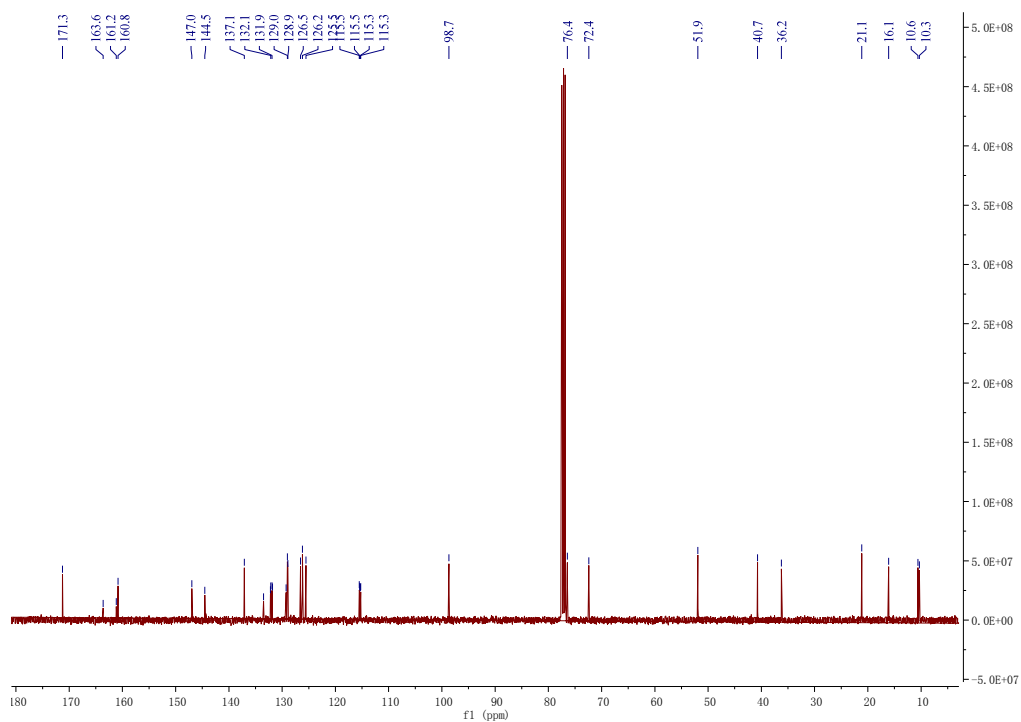


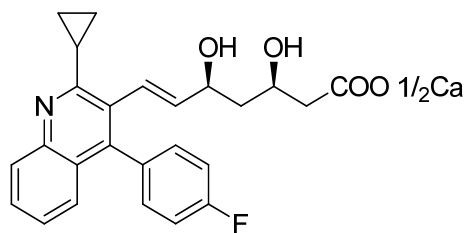


HNMR

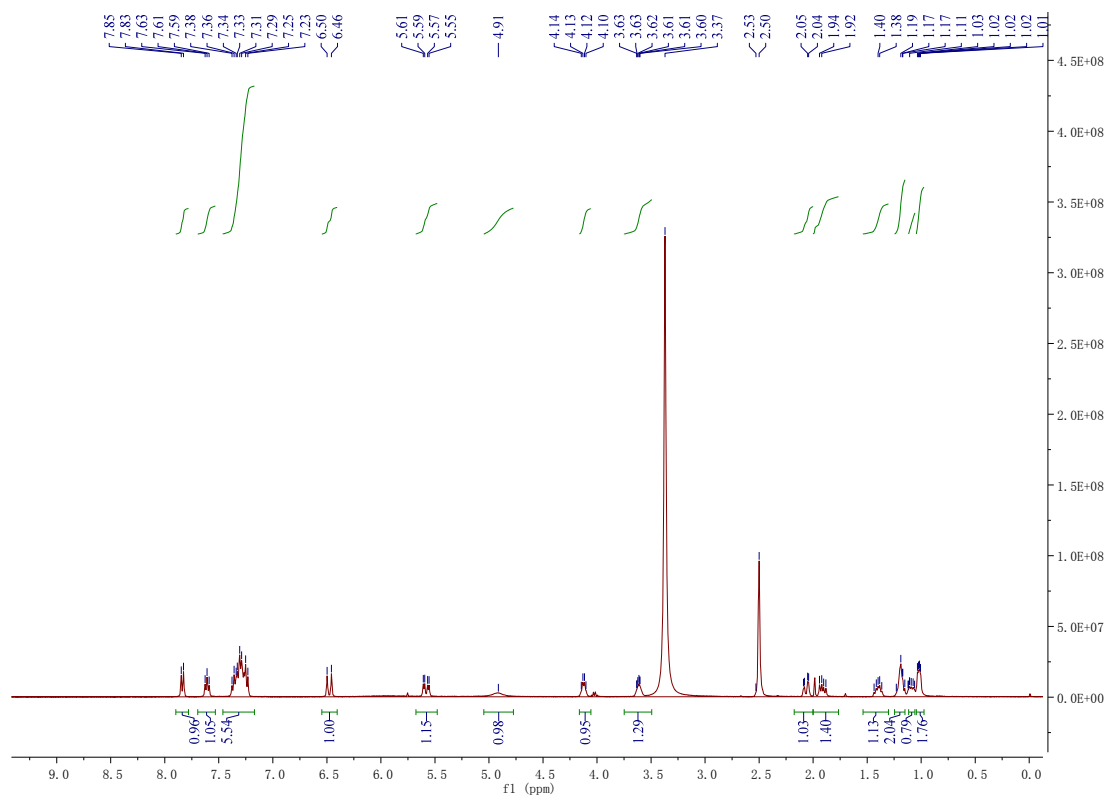


CNMR

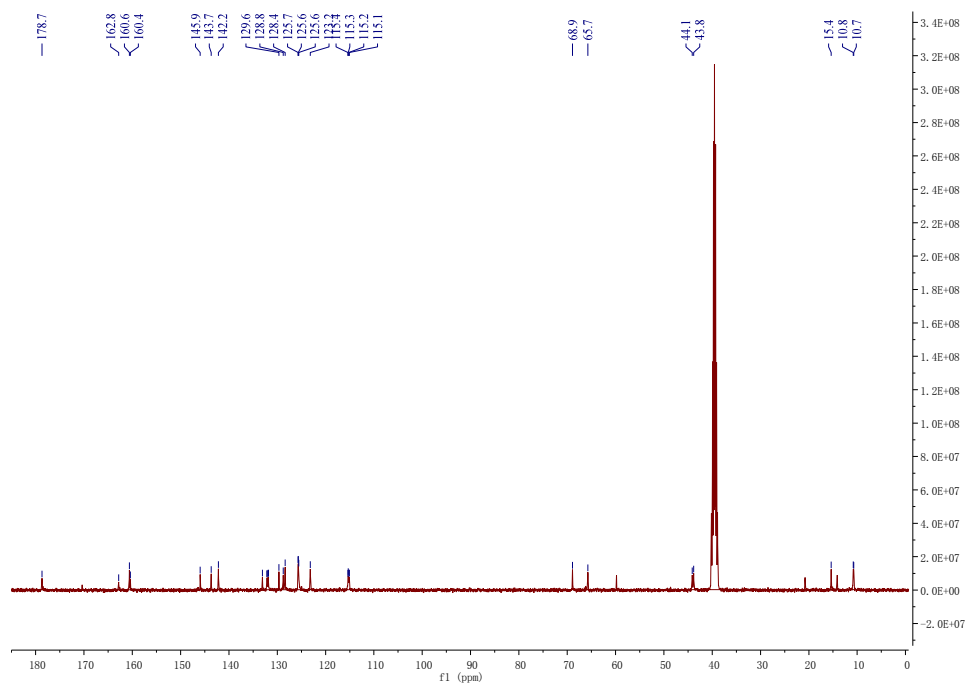




HNMR



CNMR



Display Report

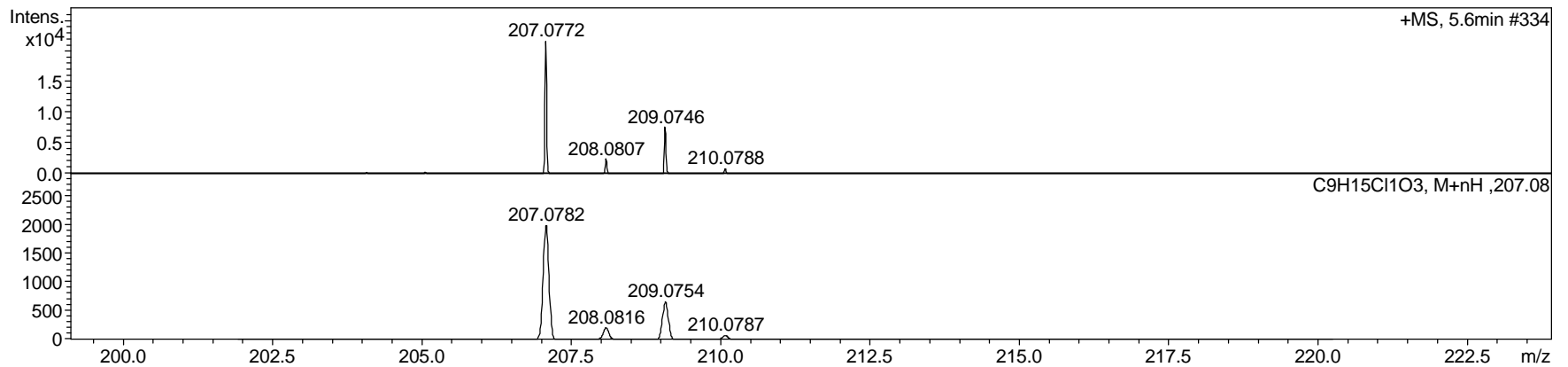
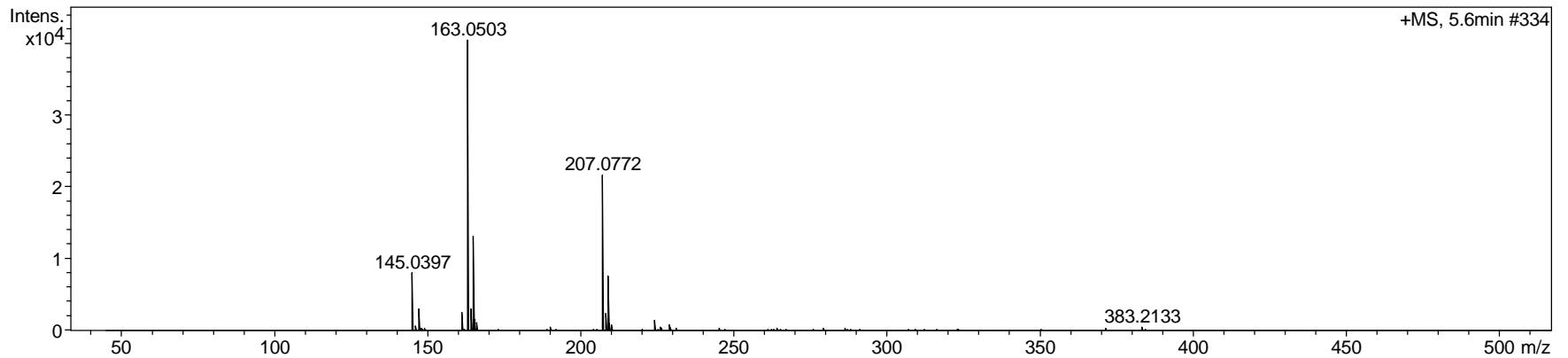
Analysis Info

Analysis Name D:\Data\MS\CFE\0421\XFJ-P1-A2_BD6_01_2431.d
Method tune_200-800_hcoona-pos-10min.m
Sample Name XFJ-P1-A2
Comment

Acquisition Date 4/22/2015 8:57:54 AM
Operator gftang
Instrument / Ser# micrOTOF II 10257

Acquisition Parameter

Source Type	ESI	Ion Polarity	Positive	Set Nebulizer	1.0 Bar
Focus	Not active			Set Dry Heater	200 °C
Scan Begin	50 m/z	Set Capillary	4000 V	Set Dry Gas	6.0 l/min
Scan End	1000 m/z	Set End Plate Offset	-500 V	Set Divert Valve	Waste



Display Report

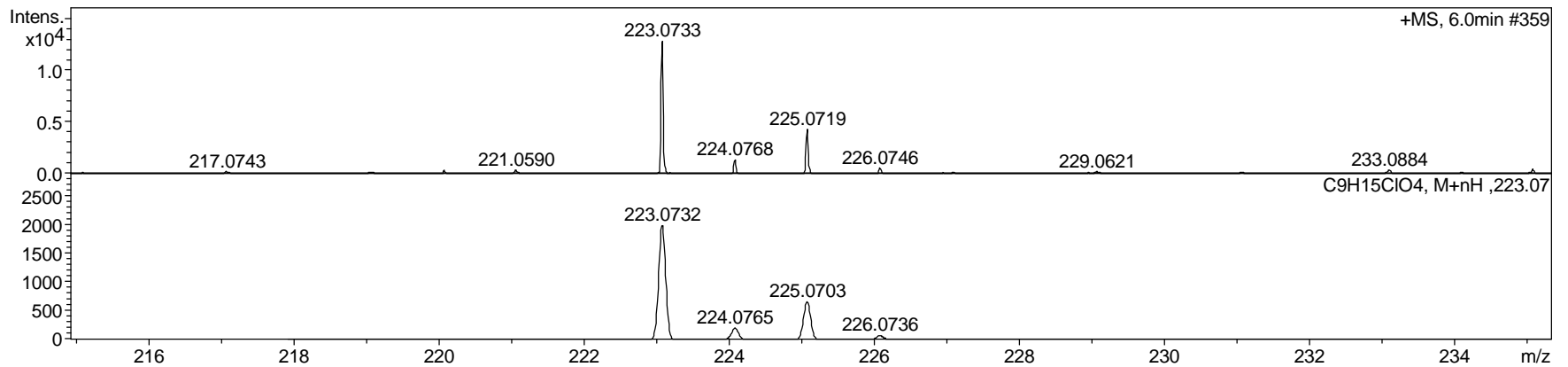
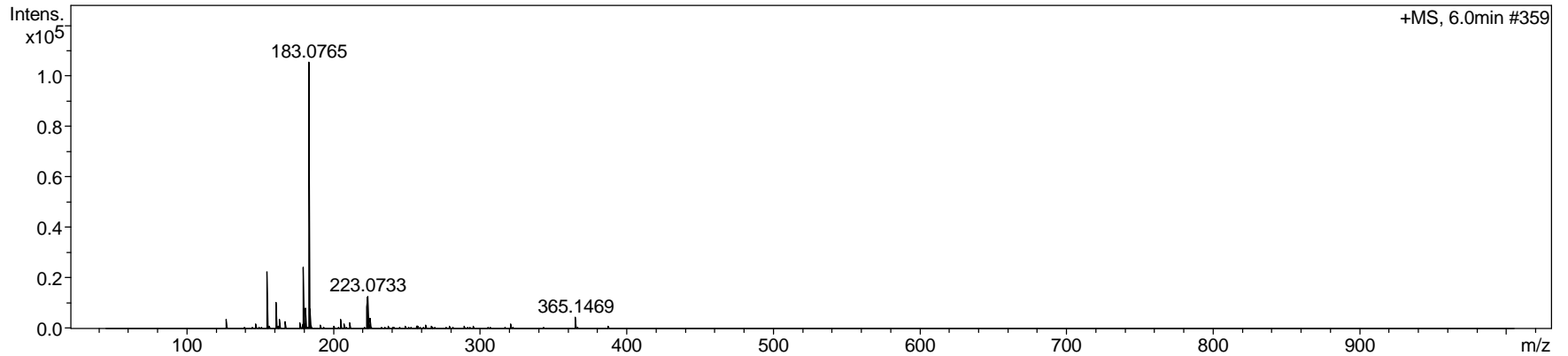
Analysis Info

Analysis Name D:\Data\MS\CFE\0421\XFJ-P1-A3_BD7_01_2432.d
Method tune_200-800_hcoona-pos-10min.m
Sample Name XFJ-P1-A3
Comment

Acquisition Date 4/22/2015 9:13:46 AM
Operator gftang
Instrument / Ser# micrOTOF II 10257

Acquisition Parameter

Source Type	ESI	Ion Polarity	Positive	Set Nebulizer	1.0 Bar
Focus	Not active			Set Dry Heater	200 °C
Scan Begin	50 m/z	Set Capillary	4000 V	Set Dry Gas	6.0 l/min
Scan End	1000 m/z	Set End Plate Offset	-500 V	Set Divert Valve	Waste



Display Report

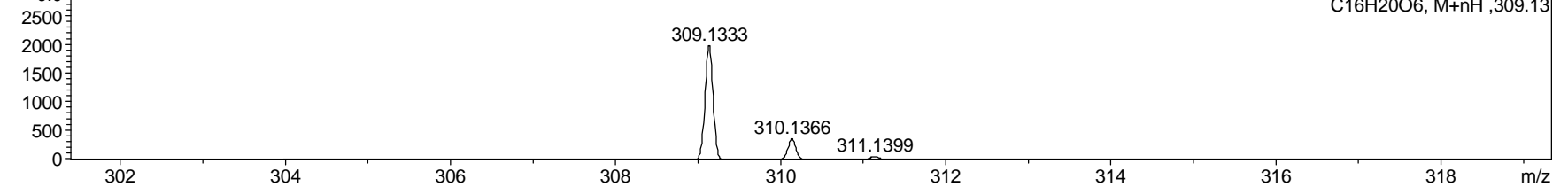
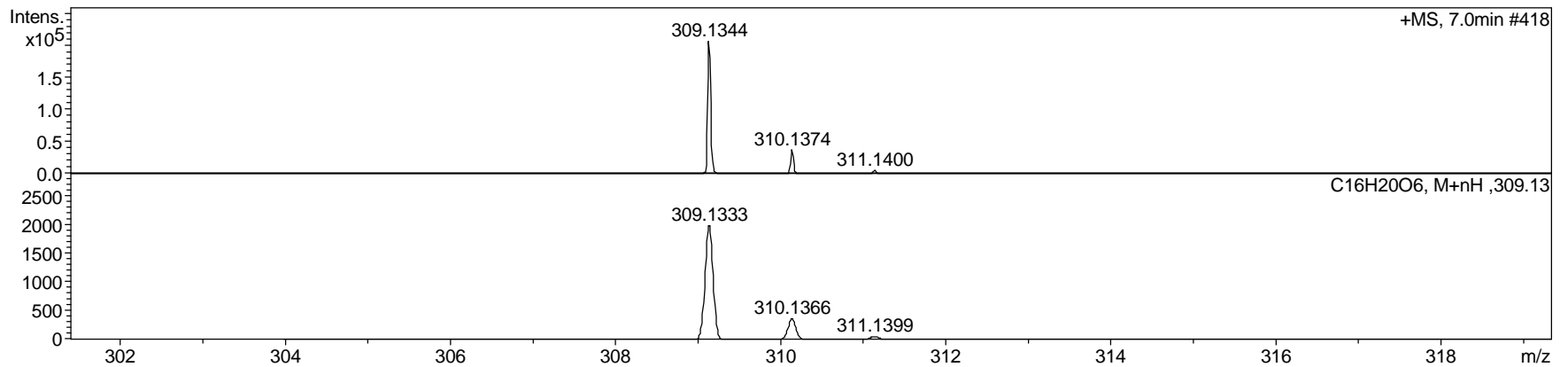
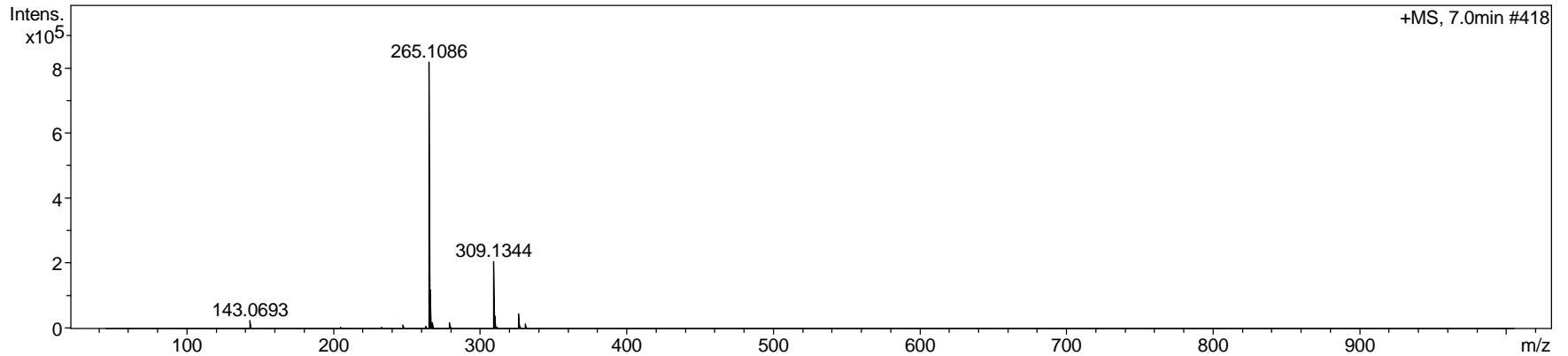
Analysis Info

Analysis Name D:\Data\MS\CFE\0421\XFJ-P1-A4_BD8_01_2433.d
Method tune_200-800_hcoona-pos-10min.m
Sample Name XFJ-P1-A4
Comment

Acquisition Date 4/22/2015 9:29:37 AM
Operator gftang
Instrument / Ser# micrOTOF II 10257

Acquisition Parameter

Source Type	ESI	Ion Polarity	Positive	Set Nebulizer	1.0 Bar
Focus	Not active			Set Dry Heater	200 °C
Scan Begin	50 m/z	Set Capillary	4000 V	Set Dry Gas	6.0 l/min
Scan End	1000 m/z	Set End Plate Offset	-500 V	Set Divert Valve	Waste



Display Report

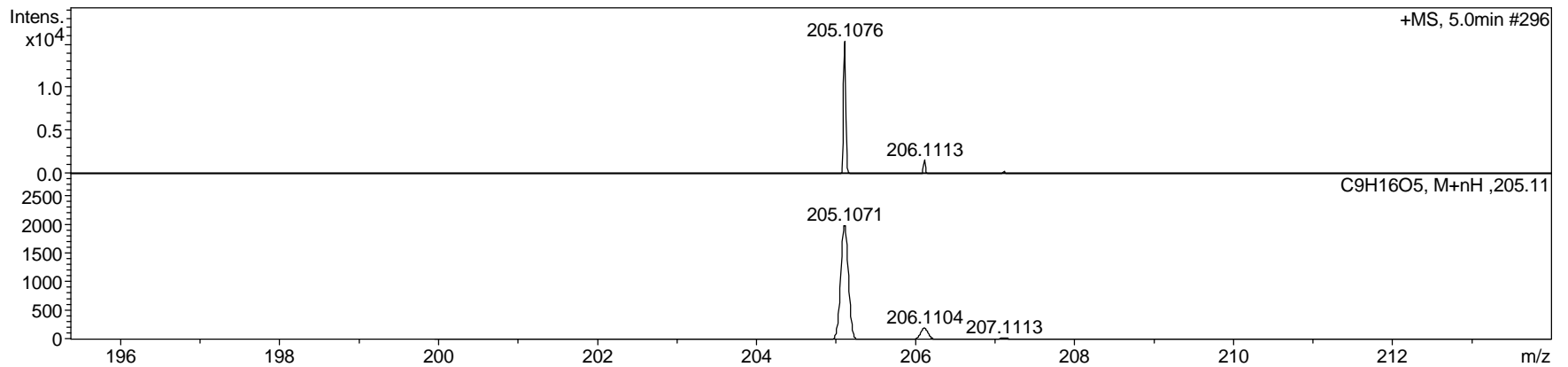
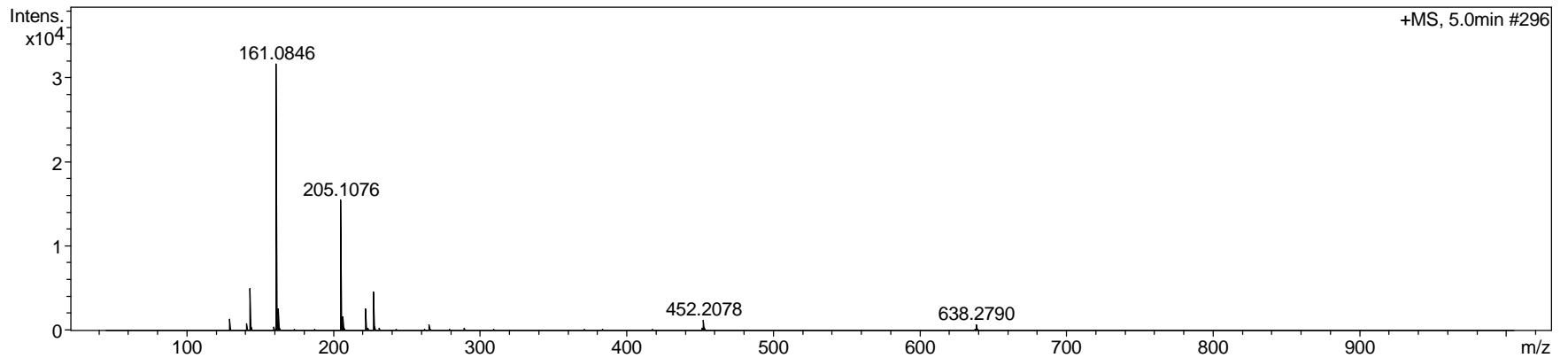
Analysis Info

Analysis Name D:\Data\MS\CFE\0421\XFJ-P1-A5_BE1_01_2434.d
Method tune_200-800_hcoona-pos-10min.m
Sample Name XFJ-P1-A5
Comment

Acquisition Date 4/22/2015 9:45:31 AM
Operator gftang
Instrument / Ser# micrOTOF II 10257

Acquisition Parameter

Source Type	ESI	Ion Polarity	Positive	Set Nebulizer	1.0 Bar
Focus	Not active			Set Dry Heater	200 °C
Scan Begin	50 m/z	Set Capillary	4000 V	Set Dry Gas	6.0 l/min
Scan End	1000 m/z	Set End Plate Offset	-500 V	Set Divert Valve	Waste



Display Report

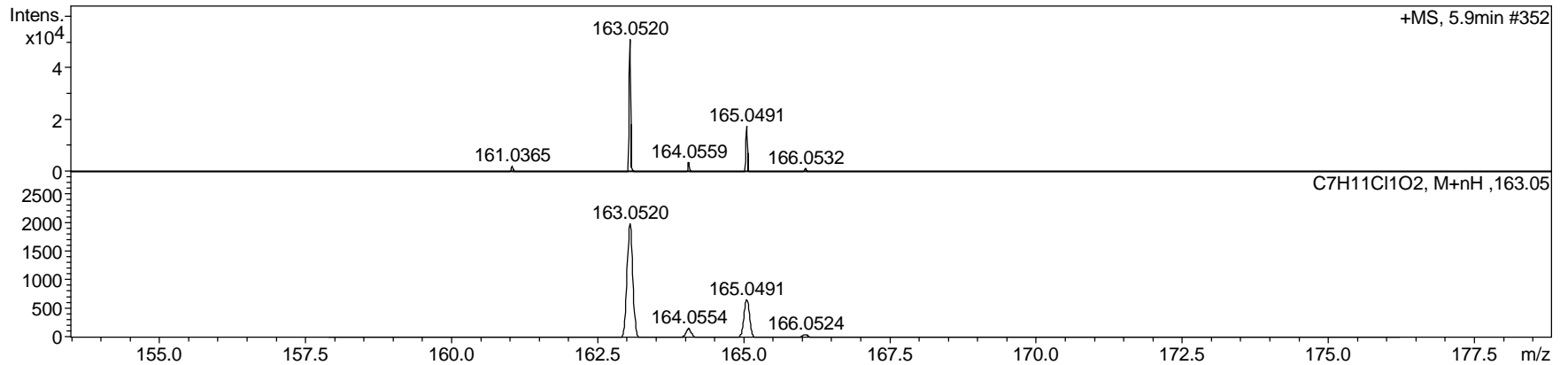
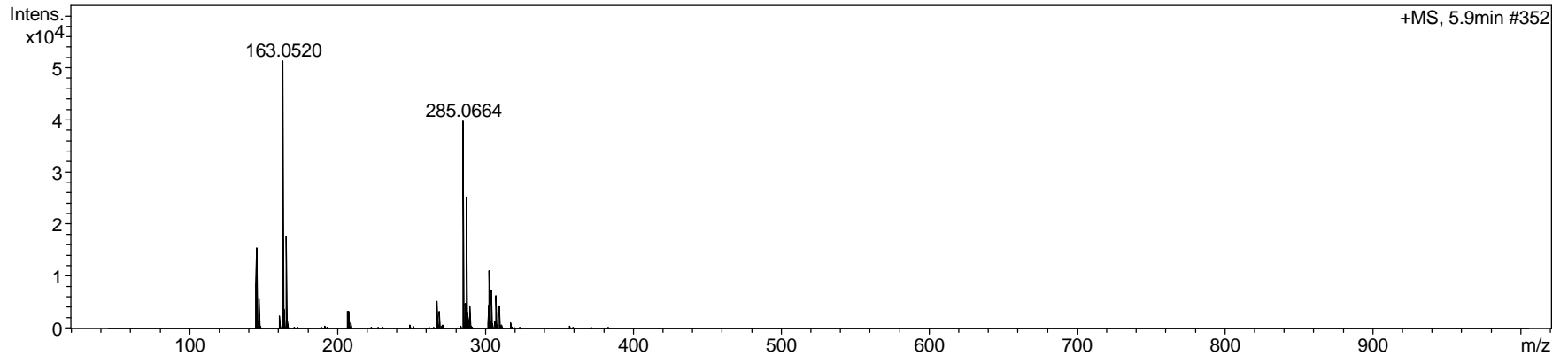
Analysis Info

Analysis Name D:\Data\MS\CFE\0421\XFJ-P1-A1_BD5_01_2430.d
Method tune_200-800_hcoona-pos-10min.m
Sample Name XFJ-P1-A1
Comment

Acquisition Date 4/22/2015 8:42:02 AM
Operator gftang
Instrument / Ser# micrOTOF II 10257

Acquisition Parameter

Source Type	ESI	Ion Polarity	Positive	Set Nebulizer	1.0 Bar
Focus	Not active			Set Dry Heater	200 °C
Scan Begin	50 m/z	Set Capillary	4000 V	Set Dry Gas	3.0 l/min
Scan End	1000 m/z	Set End Plate Offset	-500 V	Set Divert Valve	Waste



Display Report

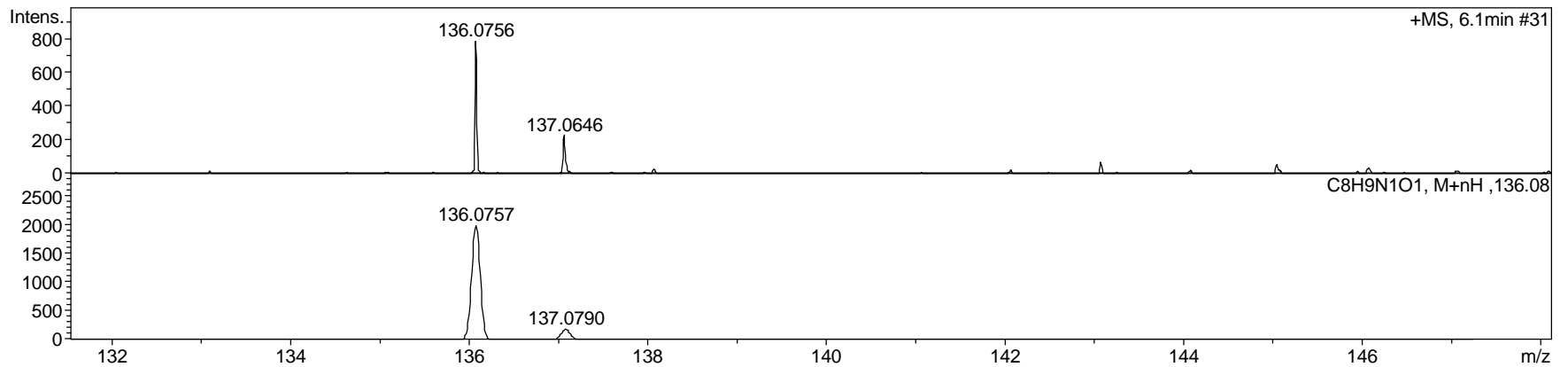
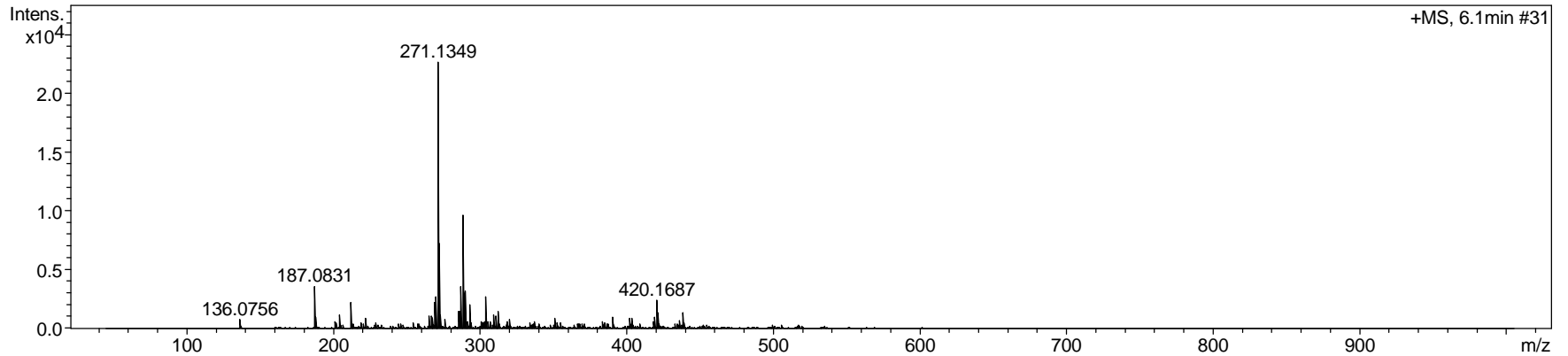
Analysis Info

Analysis Name D:\Data\MS\CFE\0421\XFJ-P1-B1_BE2_01_2435.d
Method tune_200-800_hcoona-pos-10min.m
Sample Name XFJ-P1-A5
Comment

Acquisition Date 4/22/2015 10:01:35 AM
Operator gftang
Instrument / Ser# micrOTOF II 10257

Acquisition Parameter

Source Type	ESI	Ion Polarity	Positive	Set Nebulizer	1.0 Bar
Focus	Not active			Set Dry Heater	200 °C
Scan Begin	50 m/z	Set Capillary	4000 V	Set Dry Gas	6.0 l/min
Scan End	1000 m/z	Set End Plate Offset	-500 V	Set Divert Valve	Waste



Display Report

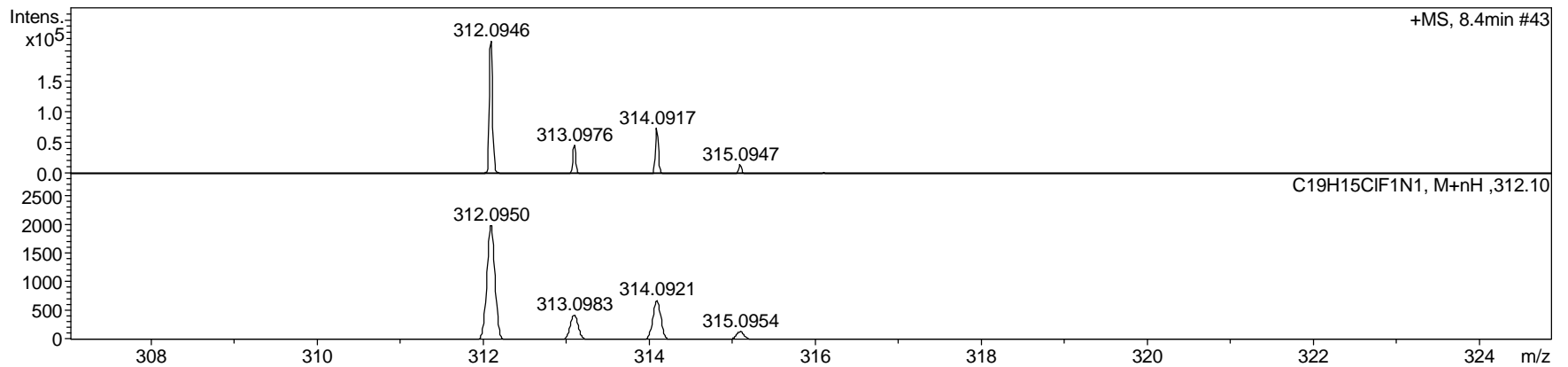
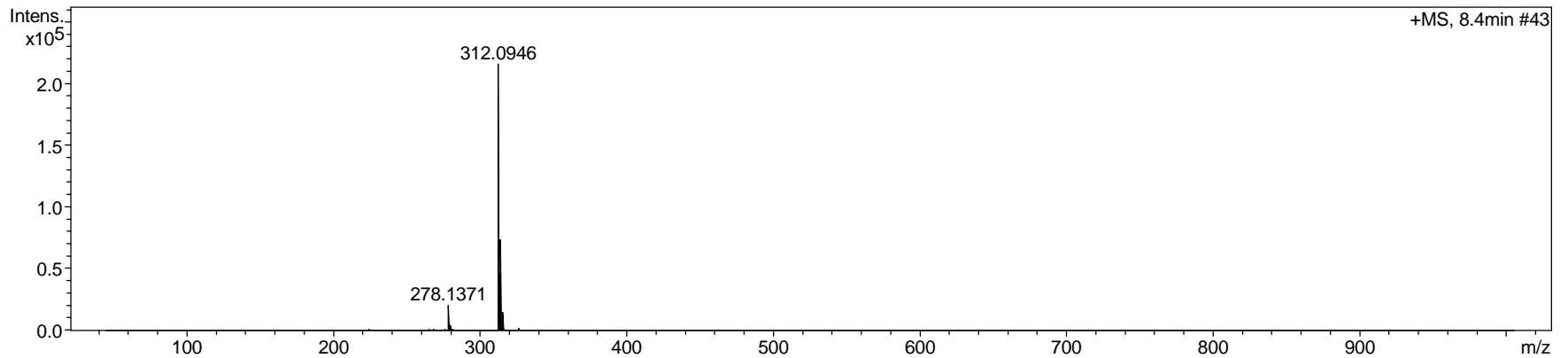
Analysis Info

Analysis Name D:\Data\MS\CFE\0421\XFJ-P1-B4_BE3_01_2436.d
Method tune_200-800_hcoona-pos-10min.m
Sample Name XFJ-P1-A5
Comment

Acquisition Date 4/22/2015 10:17:30 AM
Operator gftang
Instrument / Ser# micrOTOF II 10257

Acquisition Parameter

Source Type	ESI	Ion Polarity	Positive	Set Nebulizer	1.0 Bar
Focus	Not active			Set Dry Heater	200 °C
Scan Begin	50 m/z	Set Capillary	4000 V	Set Dry Gas	6.0 l/min
Scan End	1000 m/z	Set End Plate Offset	-500 V	Set Divert Valve	Waste



Display Report

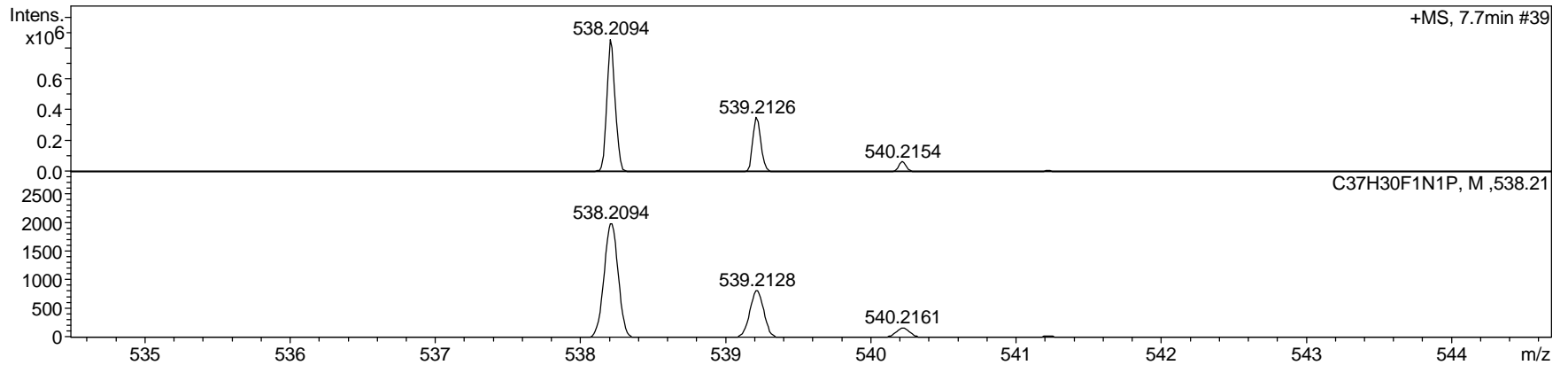
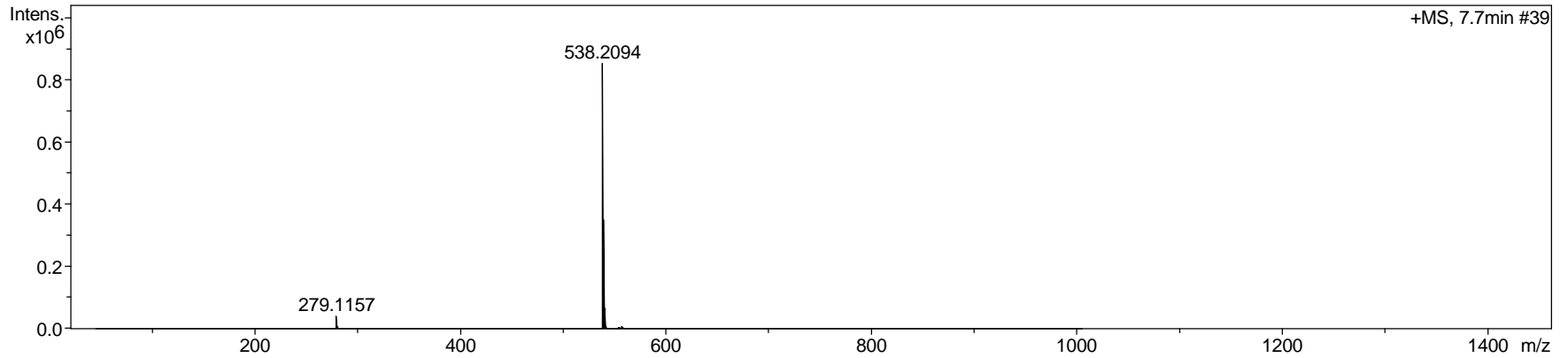
Analysis Info

Analysis Name D:\Data\MS\CFE\0421\XFJ-P1-B5_BE4_01_2437.d
Method tune_200-800_hcoona-pos-10min.m
Sample Name XFJ-P1-A5
Comment

Acquisition Date 4/22/2015 10:33:25 AM
Operator gftang
Instrument / Ser# micrOTOF II 10257

Acquisition Parameter

Source Type	ESI	Ion Polarity	Positive	Set Nebulizer	1.0 Bar
Focus	Not active			Set Dry Heater	200 °C
Scan Begin	50 m/z	Set Capillary	4000 V	Set Dry Gas	6.0 l/min
Scan End	1000 m/z	Set End Plate Offset	-500 V	Set Divert Valve	Waste



Display Report

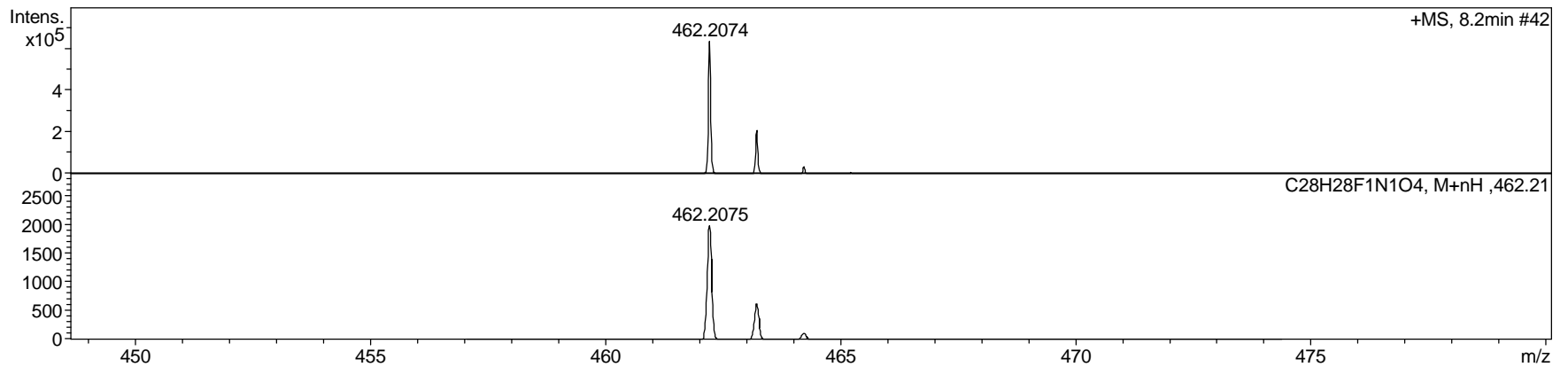
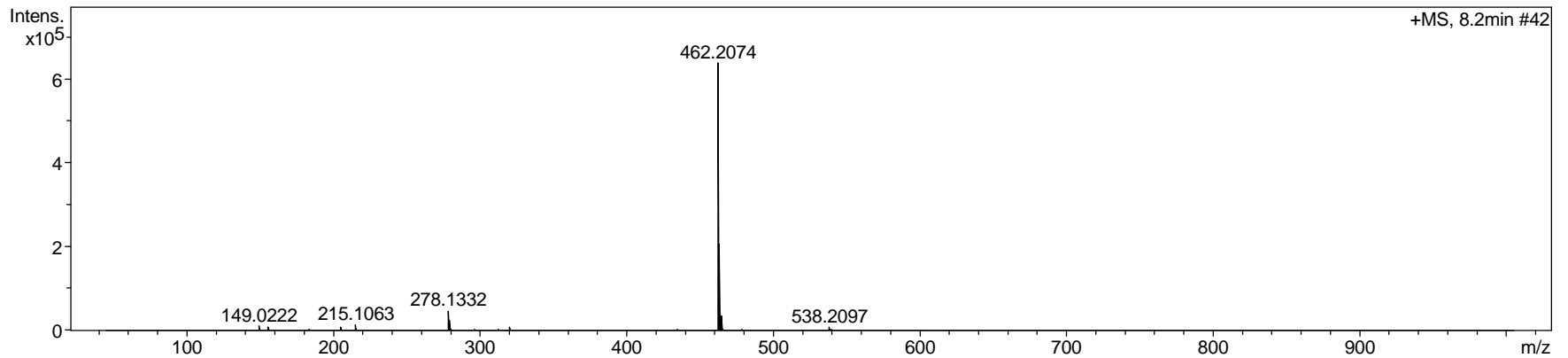
Analysis Info

Analysis Name D:\Data\MS\CFE\0421\XFJ-P2_BE5_01_2438.d
Method tune_200-800_hcoona-pos-10min.m
Sample Name XFJ-P1-A5
Comment

Acquisition Date 4/22/2015 10:49:20 AM
Operator gftang
Instrument / Ser# micrOTOF II 10257

Acquisition Parameter

Source Type	ESI	Ion Polarity	Positive	Set Nebulizer	1.0 Bar
Focus	Not active			Set Dry Heater	200 °C
Scan Begin	50 m/z	Set Capillary	4000 V	Set Dry Gas	6.0 l/min
Scan End	1000 m/z	Set End Plate Offset	-500 V	Set Divert Valve	Waste



Display Report

Analysis Info

Analysis Name D:\Data\MS\CFE\0421\WXL-355_BE6_01_2439.d
Method tune_200-800_hcoona-pos-10min.m
Sample Name XFJ-P1-A5
Comment

Acquisition Date 4/22/2015 11:05:15 AM
Operator gftang
Instrument / Ser# micrOTOF II 10257

Acquisition Parameter

Source Type	ESI	Ion Polarity	Positive	Set Nebulizer	1.0 Bar
Focus	Not active			Set Dry Heater	200 °C
Scan Begin	50 m/z	Set Capillary	4000 V	Set Dry Gas	6.0 l/min
Scan End	1000 m/z	Set End Plate Offset	-500 V	Set Divert Valve	Waste

