

Supporting Information

Copper-Catalyzed Trifluoromethylation of Alkenes: Synthesis of Trifluoromethylated Benzoxazines

Sadhan Jana, Athira Ashokan, Shailesh Kumar, Ajay Verma, and Sangit Kumar*

Department of Chemistry, Indian Institute of Science Education and Research (IISER) Bhopal,
Indore By-pass Road, Bhauri, Bhopal, Madhya Pradesh, India, Pin: 462 066

E-mail: sangitkumar@iiserb.ac.in

	Page
Table of Contents	S1
HRMS spectra of substrates and CF ₃ -benzoxazines	S2-S0

Display Report

Analysis Info

Analysis Name D:\Data\user data\2015\MAY-2015\14-MAY-2015\Dr.S.Kumar-AA-86_1-B,3_01_2503.d
Method HRLCMS-20 Sept.m
Sample Name Dr.S.Kumar-AA-86
Comment

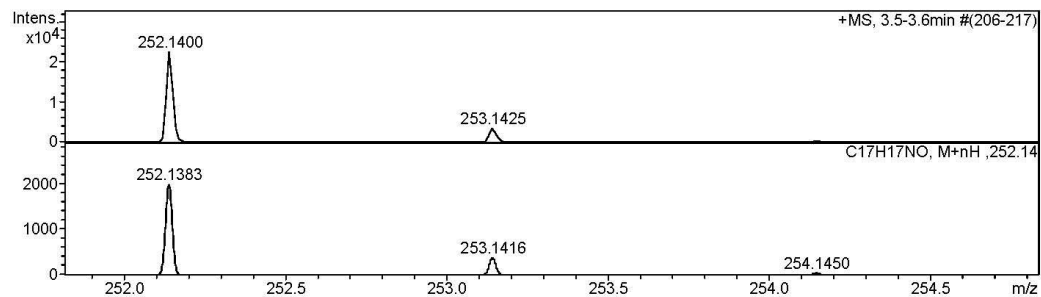
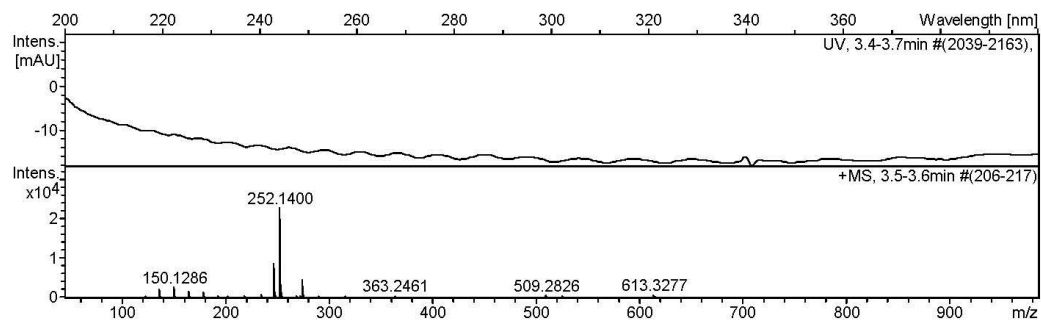
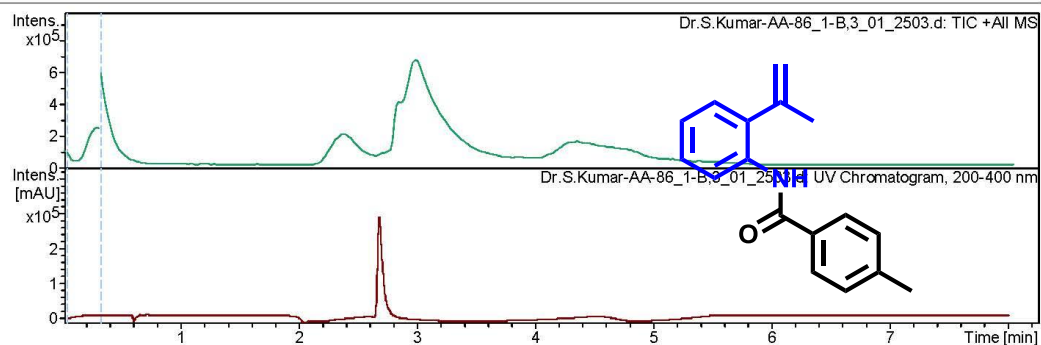
Acquisition Date 5/14/2015 2:34:55 PM

Operator RUCHI

Instrument micrOTOF-Q II 10330

Acquisition Parameter

Source Type	ESI	Ion Polarity	Positive	Set Nebulizer	1.2 Bar
Focus	Active	Set Capillary	4500 V	Set Dry Heater	200 °C
Scan Begin	50 m/z	Set End Plate Offset	-500 V	Set Dry Gas	7.0 l/min
Scan End	3000 m/z	Set Collision Cell RF	130.0 Vpp	Set Divert Valve	Waste



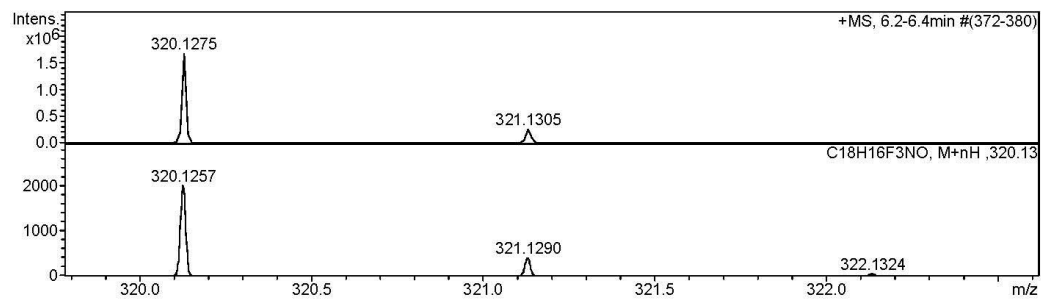
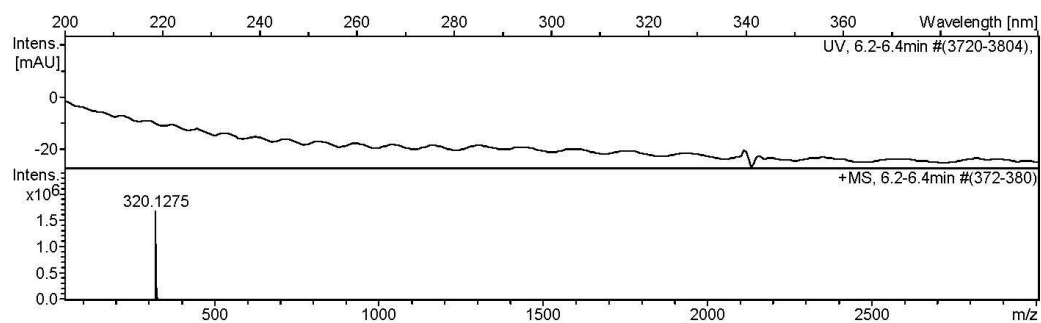
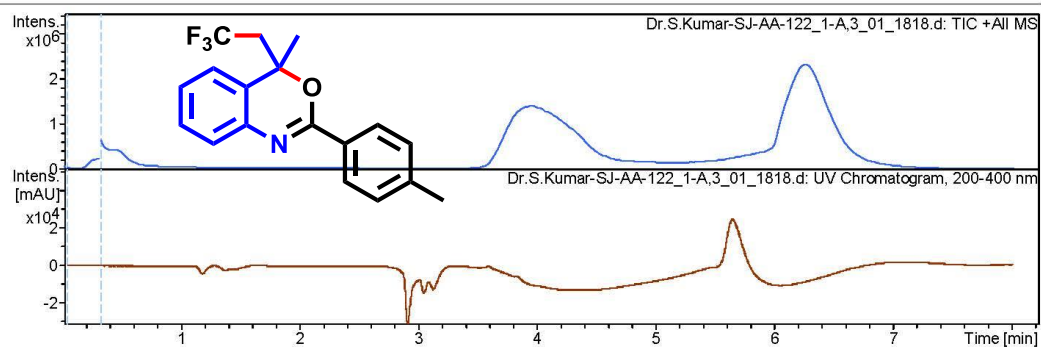
Display Report

Analysis Info

Analysis Name	D:\Data\user data\2015\MARCH-2015\05-mar-2015\Dr.S.Kumar-SJ-AA-122_1-A,3_01_1818.d
Method	HRLCMS-20 Sept.m
Sample Name	Dr.S.Kumar-SJ-AA-122
Comment	
Acquisition Date	3/5/2015 12:33:52 PM
Operator	RUCHI
Instrument	microTOF-Q II 10330

Acquisition Parameter

Source Type	ESI	Ion Polarity	Positive
Focus	Active	Set Capillary	4500 V
Scan Begin	50 m/z	Set End Plate Offset	-500 V
Scan End	3000 m/z	Set Collision Cell RF	130.0 Vpp
		Set Nebulizer	1.2 Bar
		Set Dry Heater	200 °C
		Set Dry Gas	7.0 l/min
		Set Divert Valve	Waste



Display Report

Analysis Info

Analysis Name	D:\Data\user data\2015\MARCH-2015\05-mar-2015\Dr.S.Kumar-SJ-AA-123_1-A,4_01_1819.d
Method	HRLCMS-20 Sept.m
Sample Name	Dr.S.Kumar-SJ-AA-123
Comment	

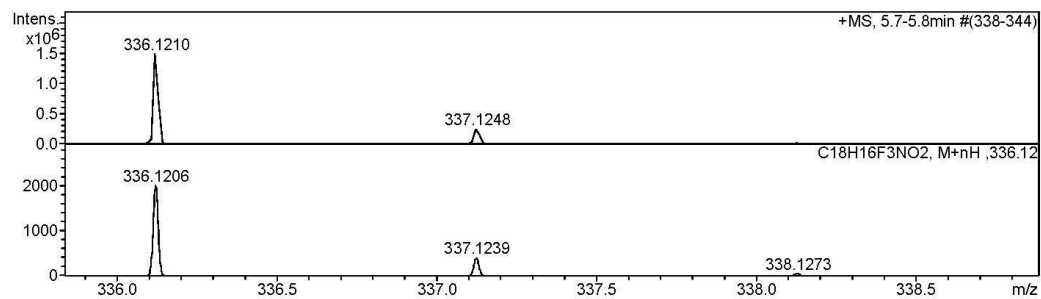
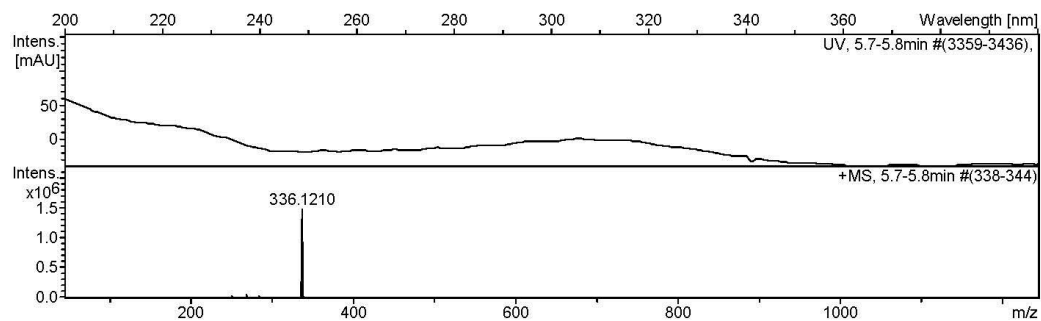
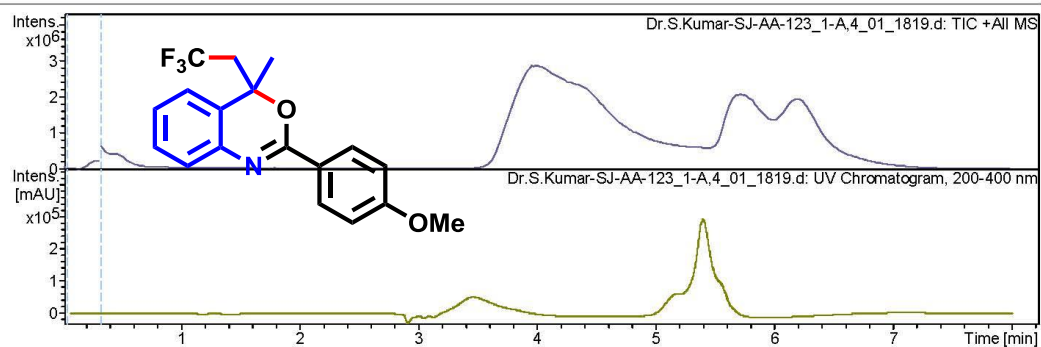
Acquisition Date 3/5/2015 12:43:04 PM

Operator RUCHI

Instrument microTOF-Q II 10330

Acquisition Parameter

Source Type	ESI	Ion Polarity	Positive
Focus	Active	Set Capillary	4500 V
Scan Begin	50 m/z	Set End Plate Offset	-500 V
Scan End	3000 m/z	Set Collision Cell RF	130.0 Vpp
		Set Nebulizer	1.2 Bar
		Set Dry Heater	200 °C
		Set Dry Gas	7.0 l/min
		Set Divert Valve	Waste



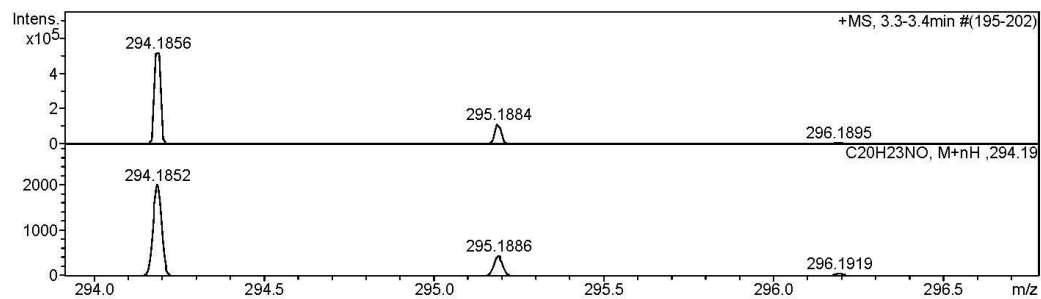
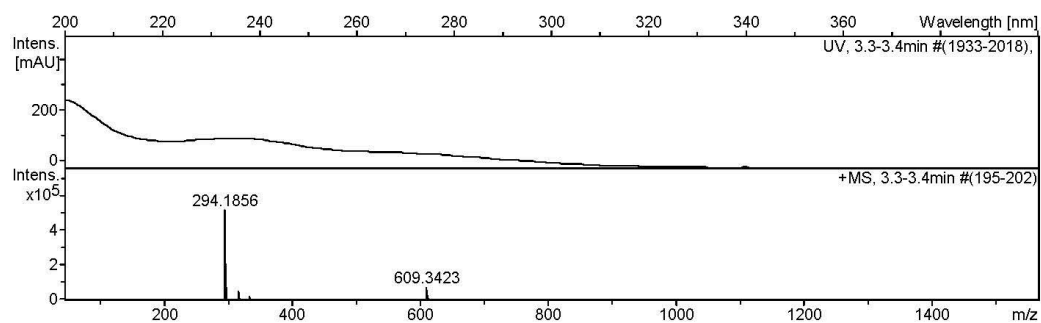
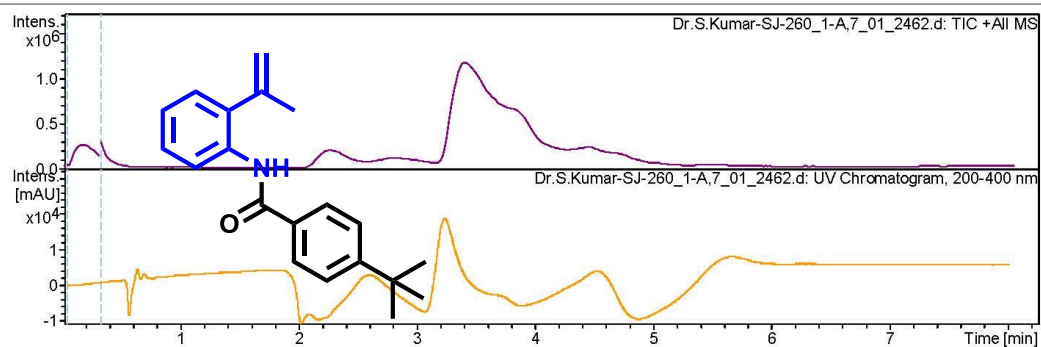
Display Report

Analysis Info

Analysis Name	D:\Data\user data\2015\MAY-2015\13-MAY-2015\Dr.S.Kumar-SJ-260_1-A,7_01_2462.d
Method	HRLCMS-20 Sept.m
Sample Name	Dr.S.Kumar-SJ-260
Comment	
Acquisition Date	5/13/2015 12:41:40 PM
Operator	RUCHI
Instrument	microTOF-Q II 10330

Acquisition Parameter

Source Type	ESI	Ion Polarity	Positive
Focus	Active	Set Capillary	4500 V
Scan Begin	50 m/z	Set End Plate Offset	-500 V
Scan End	3000 m/z	Set Collision Cell RF	130.0 Vpp
		Set Nebulizer	1.2 Bar
		Set Dry Heater	200 °C
		Set Dry Gas	7.0 l/min
		Set Divert Valve	Waste



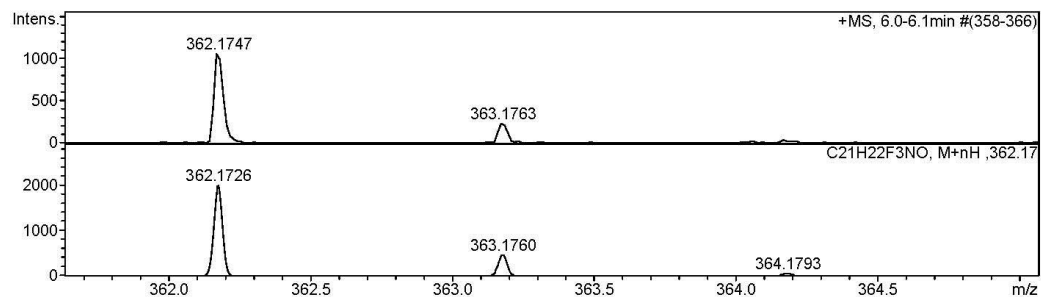
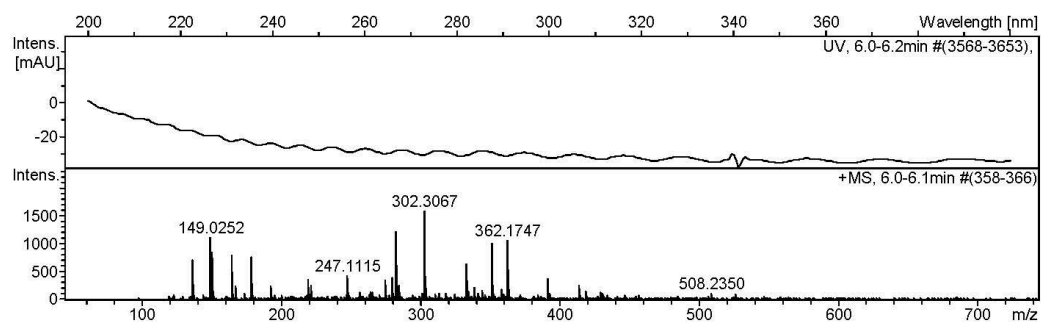
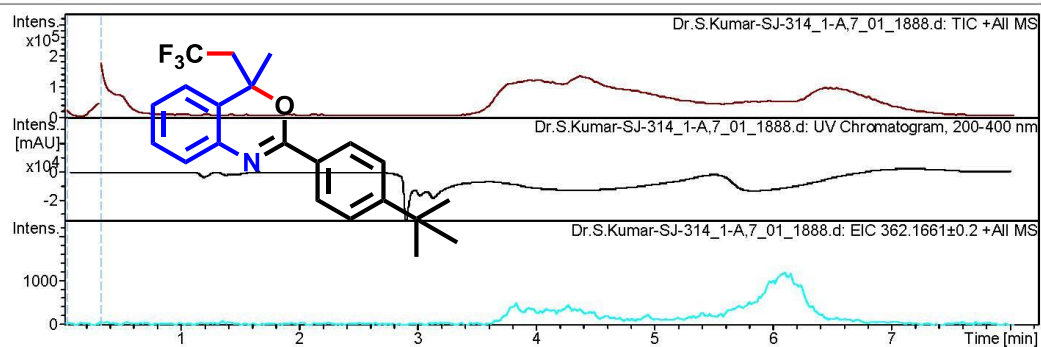
Display Report

Analysis Info

Analysis Name	D:\Data\user data\2015\MARCH-2015\16 MAR-2015\Dr.S.Kumar-SJ-314_1-A,7_01_1888.d
Method	HRLCMS-20 Sept.m
Sample Name	Dr.S.Kumar-SJ-314
Comment	
Acquisition Date	3/16/2015 2:23:37 PM
Operator	RUCHI
Instrument	microTOF-Q II 10330

Acquisition Parameter

Source Type	ESI	Ion Polarity	Positive
Focus	Active	Set Capillary	4500 V
Scan Begin	50 m/z	Set End Plate Offset	-500 V
Scan End	3000 m/z	Set Collision Cell RF	130.0 Vpp
		Set Nebulizer	1.2 Bar
		Set Dry Heater	200 °C
		Set Dry Gas	7.0 l/min
		Set Divert Valve	Waste



Display Report

Analysis Info

Analysis Name	D:\Data\user data\2015\MAY-2015\13-MAY-2015\Dr.S.Kumar-SJ-250_1-A,4_01_2458.d
Method	HRLCMS-20 Sept.m
Sample Name	Dr.S.Kumar-SJ-250
Comment	

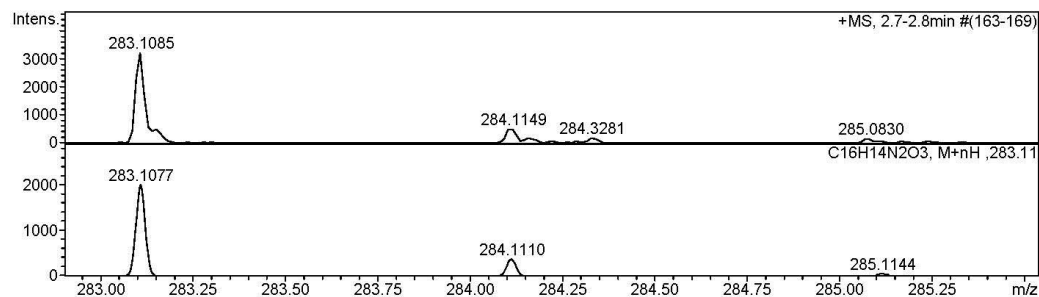
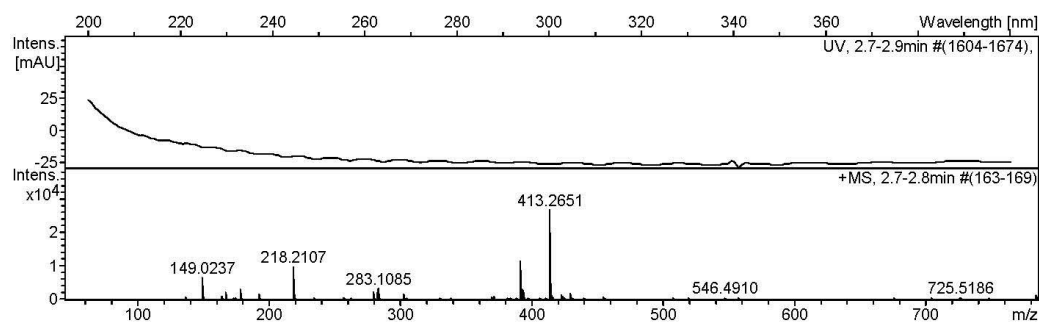
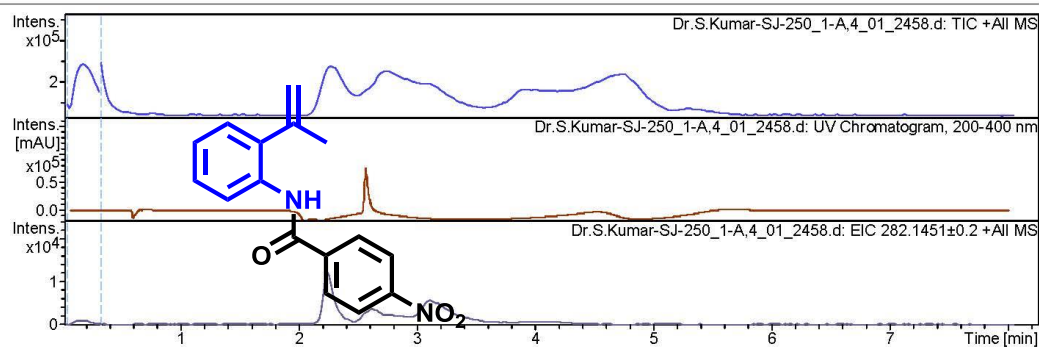
Acquisition Date 5/13/2015 12:01:56 PM

Operator RUCHI

Instrument microTOF-Q II 10330

Acquisition Parameter

Source Type	ESI	Ion Polarity	Positive
Focus	Active	Set Capillary	4500 V
Scan Begin	50 m/z	Set End Plate Offset	-500 V
Scan End	3000 m/z	Set Collision Cell RF	130.0 Vpp
		Set Nebulizer	1.2 Bar
		Set Dry Heater	200 °C
		Set Dry Gas	7.0 l/min
		Set Divert Valve	Waste



Display Report

Analysis Info

Analysis Name	D:\Data\user data\2015\MARCH-2015\16 MAR-2015\Dr.S.Kumar-SJ-313_1-A,6_01_1881.d
Method	HRLCMS-20 Sept.m
Sample Name	Dr.S.Kumar-SJ-313
Comment	

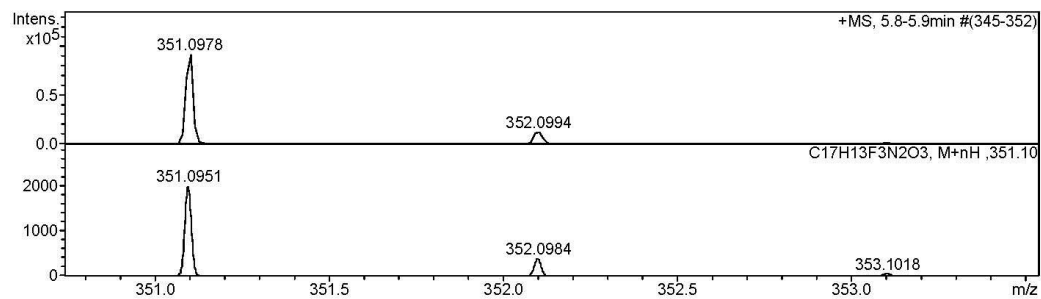
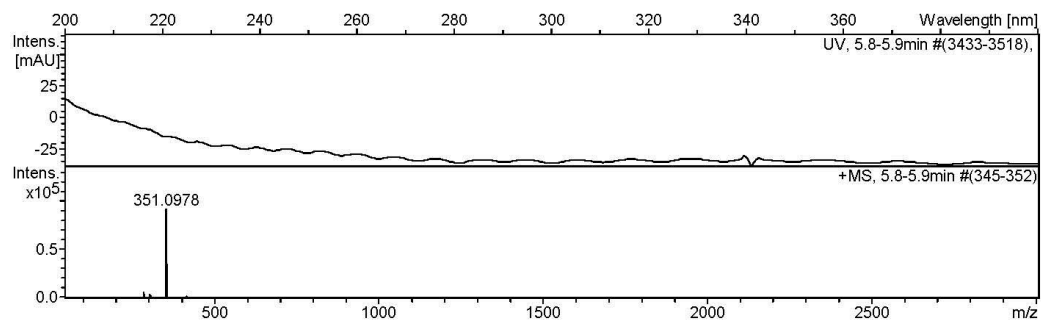
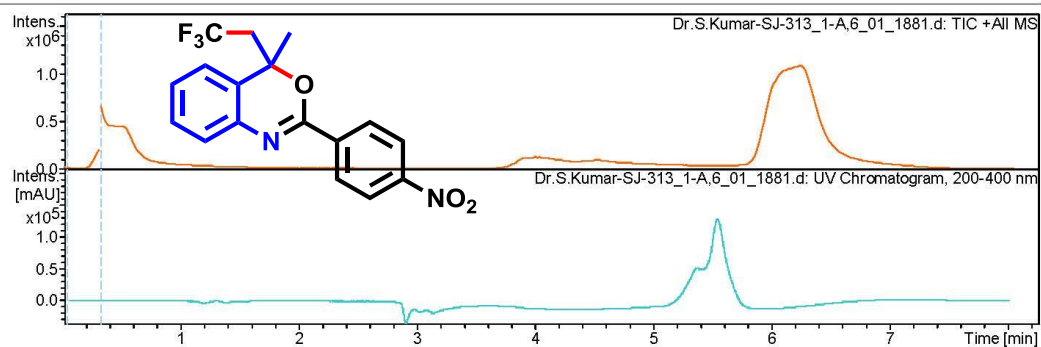
Acquisition Date 3/16/2015 12:41:22 PM

Operator RUCHI

Instrument microTOF-Q II 10330

Acquisition Parameter

Source Type	ESI	Ion Polarity	Positive
Focus	Active	Set Capillary	4500 V
Scan Begin	50 m/z	Set End Plate Offset	-500 V
Scan End	3000 m/z	Set Collision Cell RF	130.0 Vpp
		Set Nebulizer	1.2 Bar
		Set Dry Heater	200 °C
		Set Dry Gas	7.0 l/min
		Set Divert Valve	Waste



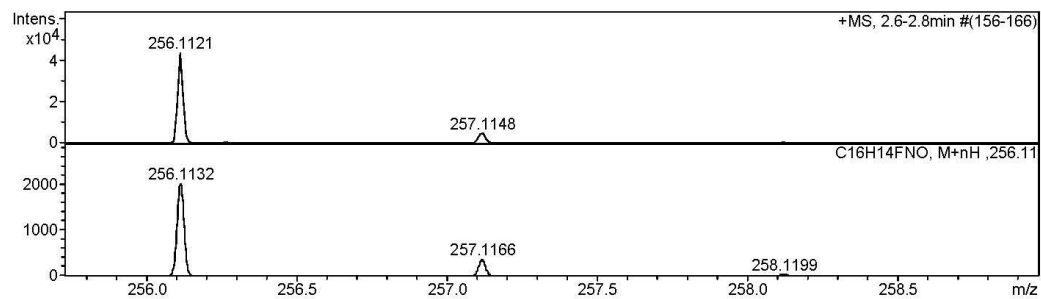
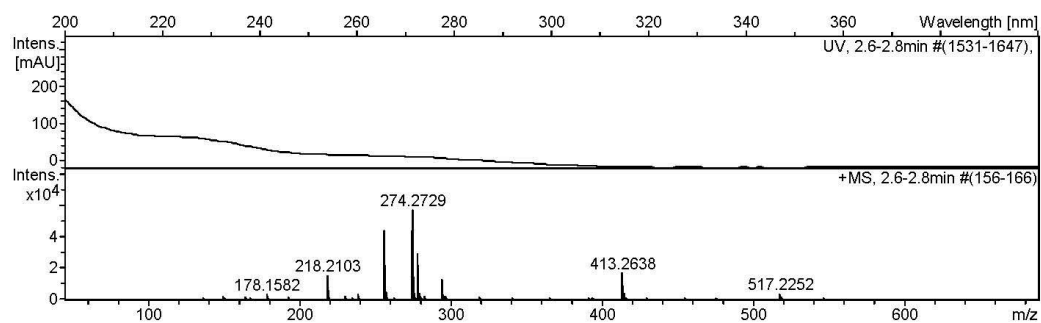
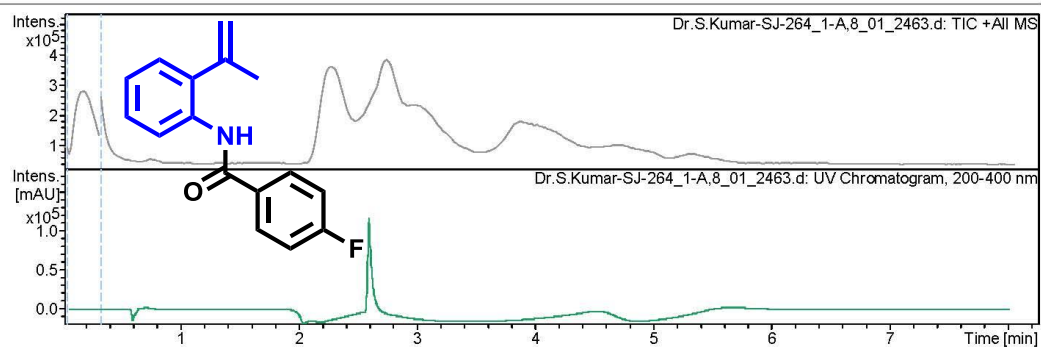
Display Report

Analysis Info

Analysis Name	D:\Data\user data\2015\MAY-2015\13-MAY-2015\Dr.S.Kumar-SJ-264_1-A,8_01_2463.d
Method	HRLCMS-20 Sept.m
Sample Name	Dr.S.Kumar-SJ-264
Comment	
Acquisition Date	5/13/2015 12:50:51 PM
Operator	RUCHI
Instrument	microTOF-Q II 10330

Acquisition Parameter

Source Type	ESI	Ion Polarity	Positive
Focus	Active	Set Capillary	4500 V
Scan Begin	50 m/z	Set End Plate Offset	-500 V
Scan End	3000 m/z	Set Collision Cell RF	130.0 Vpp
		Set Nebulizer	1.2 Bar
		Set Dry Heater	200 °C
		Set Dry Gas	7.0 l/min
		Set Divert Valve	Waste



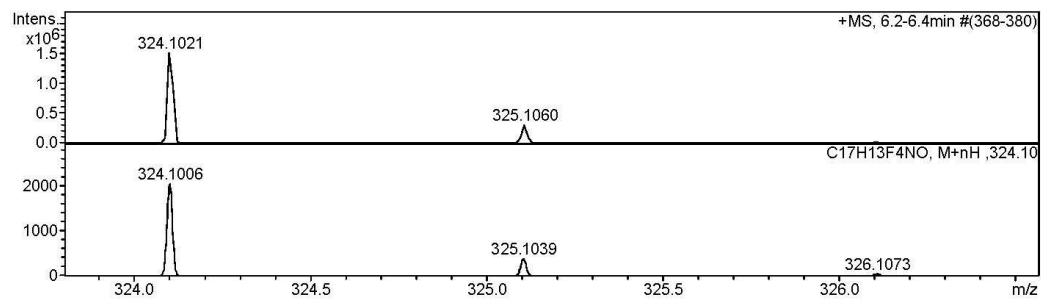
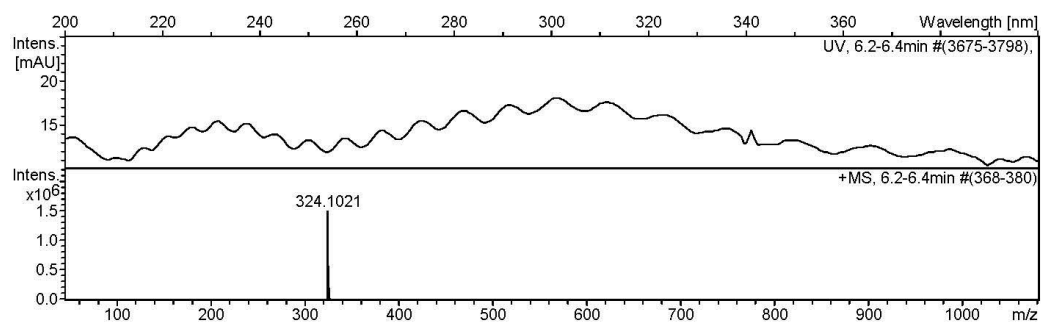
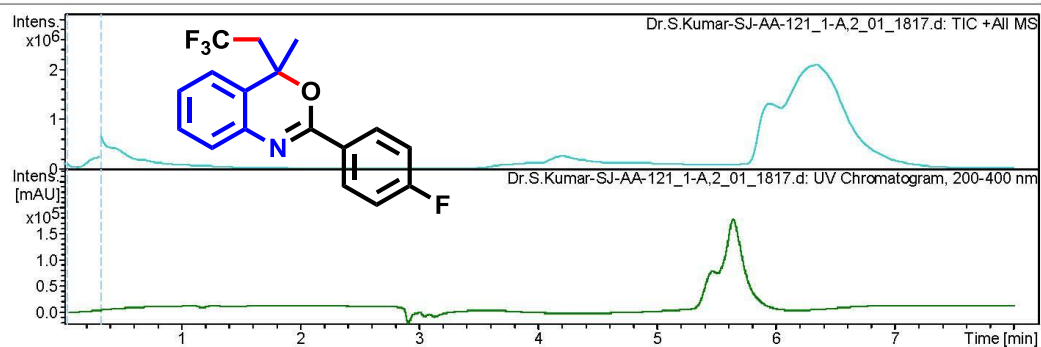
Display Report

Analysis Info

Analysis Name	D:\Data\user data\2015\MARCH-2015\05-mar-2015\Dr.S.Kumar-SJ-AA-121_1-A,2_01_1817.d
Method	HRLCMS-20 Sept.m
Sample Name	Dr.S.Kumar-SJ-AA-121
Comment	
Acquisition Date	3/5/2015 12:24:42 PM
Operator	RUCHI
Instrument	microTOF-Q II 10330

Acquisition Parameter

Source Type	ESI	Ion Polarity	Positive
Focus	Active	Set Capillary	4500 V
Scan Begin	50 m/z	Set End Plate Offset	-500 V
Scan End	3000 m/z	Set Collision Cell RF	130.0 Vpp
		Set Nebulizer	1.2 Bar
		Set Dry Heater	200 °C
		Set Dry Gas	7.0 l/min
		Set Divert Valve	Waste



Display Report

Analysis Info

Analysis Name D:\Data\user data\2015\April-2015\24-April-2015\Dr.S.Kumar-AA-138.d
Method tune_low.m
Sample Name AA-138
Comment

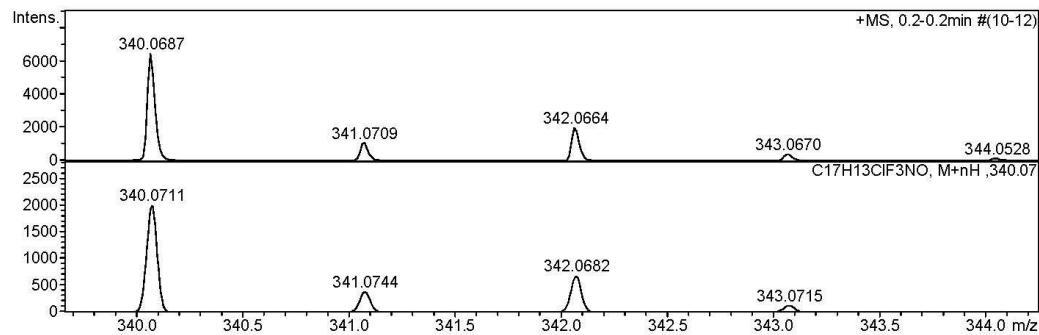
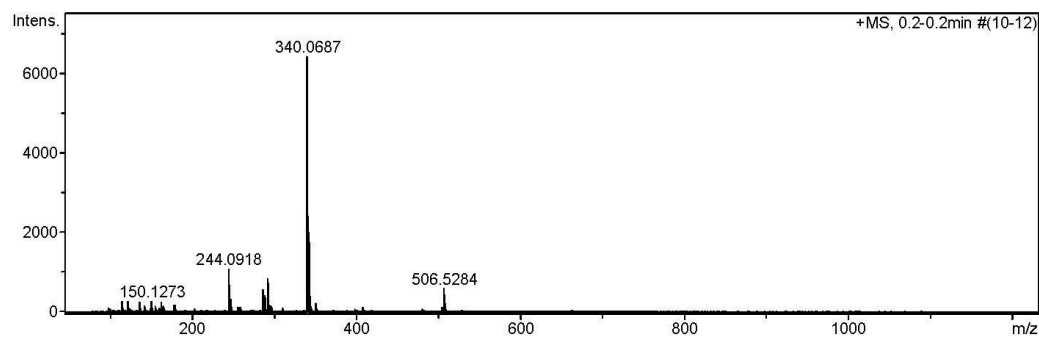
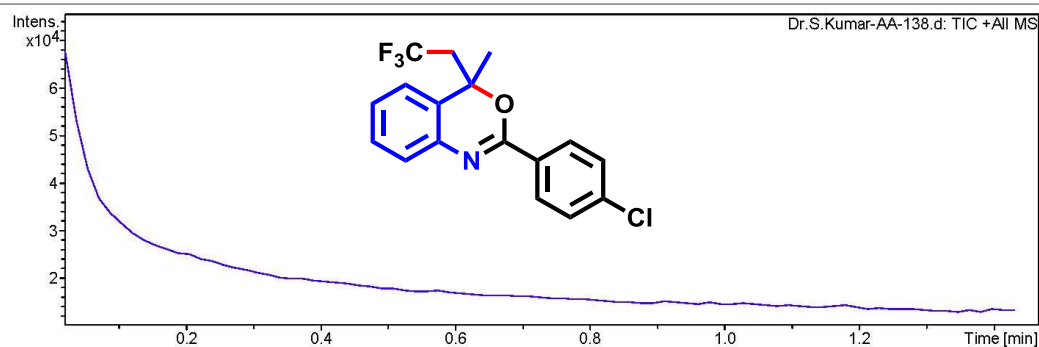
Acquisition Date 4/24/2015 4:58:12 PM

Operator RUCHI

Instrument micrOTOF-Q II 10330

Acquisition Parameter

Source Type	ESI	Ion Polarity	Positive	Set Nebulizer	0.4 Bar
Focus	Not active	Set Capillary	4600 V	Set Dry Heater	180 °C
Scan Begin	50 m/z	Set End Plate Offset	-500 V	Set Dry Gas	4.0 l/min
Scan End	3000 m/z	Set Collision Cell RF	130.0 Vpp	Set Divert Valve	Waste



Display Report

Analysis Info

Analysis Name D:\Data\user data\2015\MAY-2015\13-MAY-2015\Dr.S.Kumar-SJ-252_1-A,5_01_2459.d
Method HRLCMS-20 Sept.m
Sample Name Dr.S.Kumar-SJ-252
Comment

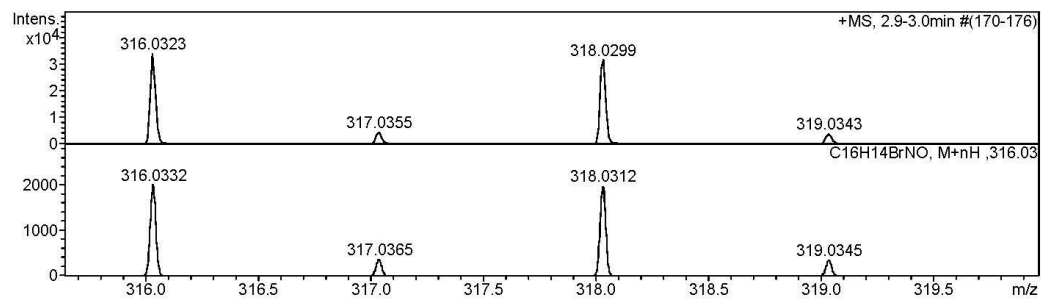
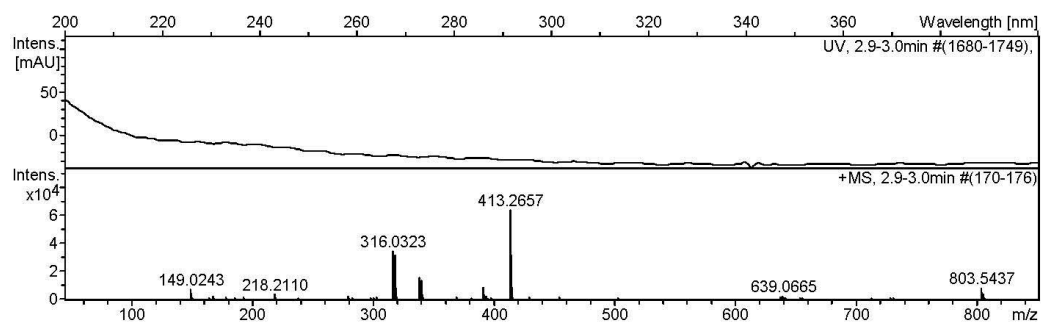
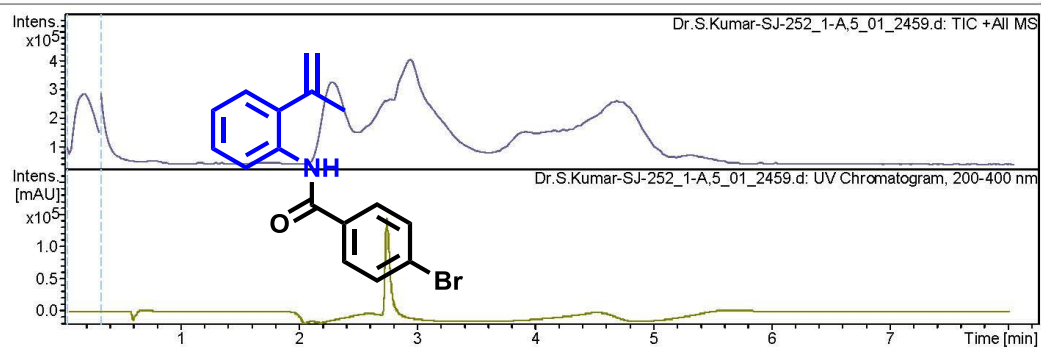
Acquisition Date 5/13/2015 12:11:06 PM

Operator RUCHI

Instrument microTOF-Q II 10330

Acquisition Parameter

Source Type	ESI	Ion Polarity	Positive	Set Nebulizer	1.2 Bar
Focus	Active	Set Capillary	4500 V	Set Dry Heater	200 °C
Scan Begin	50 m/z	Set End Plate Offset	-500 V	Set Dry Gas	7.0 l/min
Scan End	3000 m/z	Set Collision Cell RF	130.0 Vpp	Set Divert Valve	Waste



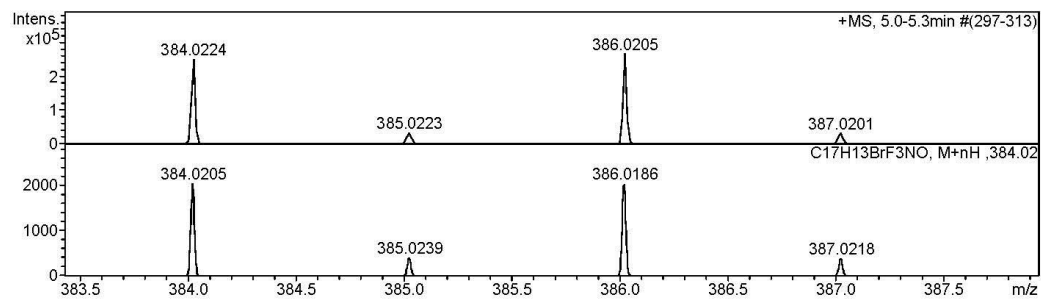
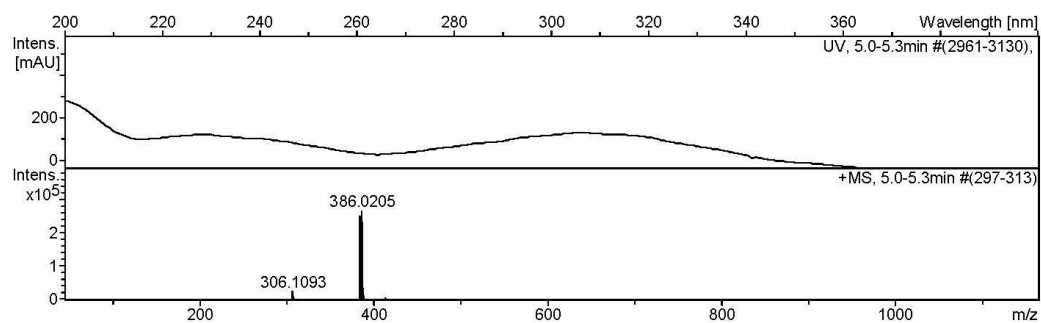
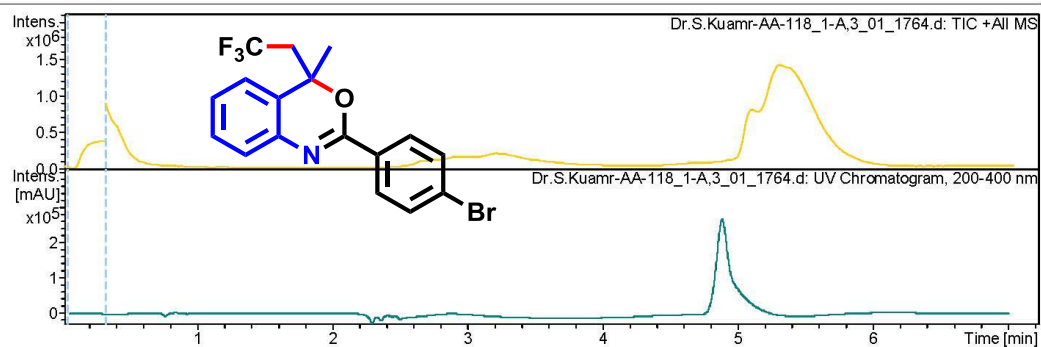
Display Report

Analysis Info

Analysis Name	D:\Data\user data\2015\FEB-2015\26-FEB-2015\Dr.S.Kuamr-AA-118_1-A,3_01_1764.d
Method	HRLCMS-20 Sept.m
Sample Name	Dr.S.Kuamr-AA-118
Comment	
Acquisition Date	2/26/2015 12:51:02 PM
Operator	RUCHI
Instrument	microTOF-Q II 10330

Acquisition Parameter

Source Type	ESI	Ion Polarity	Positive
Focus	Active	Set Capillary	4500 V
Scan Begin	50 m/z	Set End Plate Offset	-500 V
Scan End	3000 m/z	Set Collision Cell RF	130.0 Vpp
		Set Nebulizer	1.2 Bar
		Set Dry Heater	200 °C
		Set Dry Gas	7.0 l/min
		Set Divert Valve	Waste



Display Report

Analysis Info

Analysis Name	D:\Data\user data\2015\MAY-2015\14-MAY-2015\Dr.S.Kumar-AA-88_1-B,2_01_2492.d
Method	HRLCMS-20 Sept.m
Sample Name	Dr.S.Kumar-AA-88
Comment	

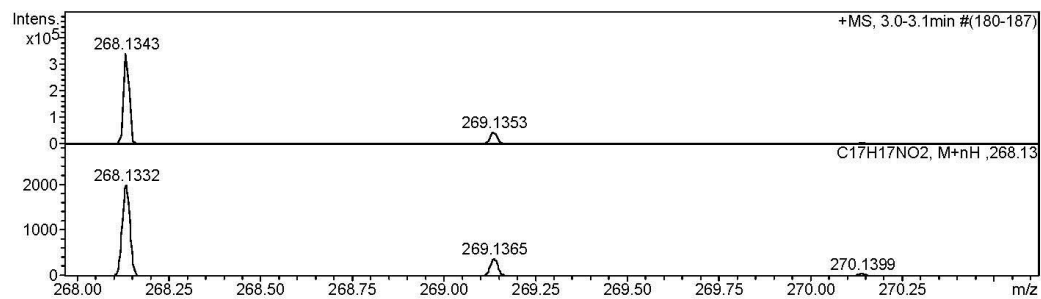
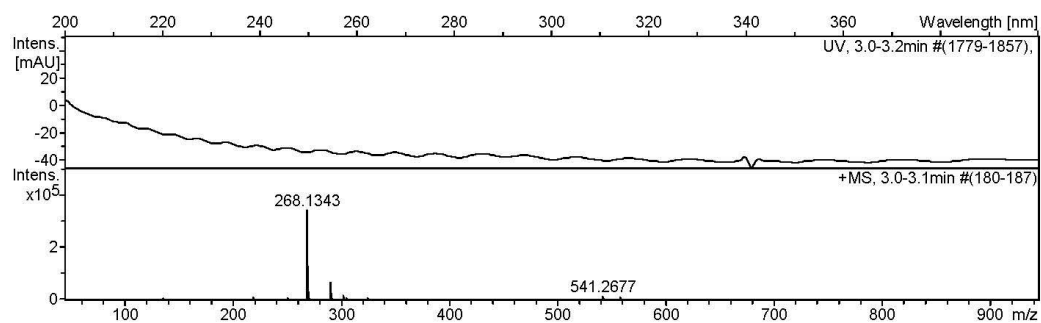
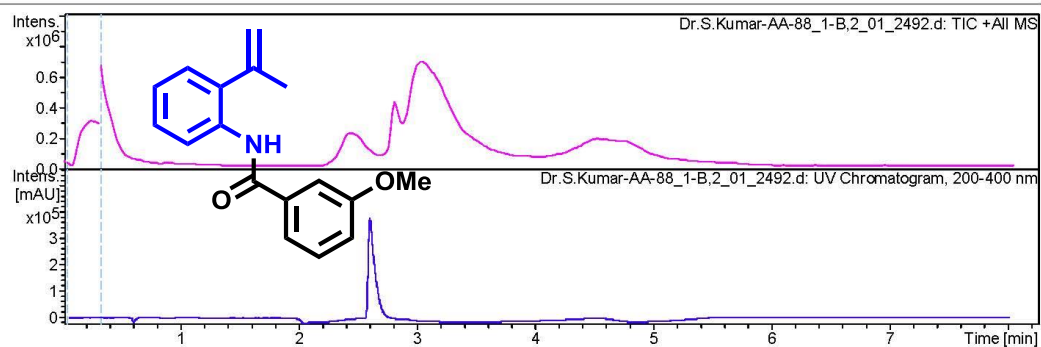
Acquisition Date 5/14/2015 12:24:12 PM

Operator RUCHI

Instrument microTOF-Q II 10330

Acquisition Parameter

Source Type	ESI	Ion Polarity	Positive
Focus	Active	Set Capillary	4500 V
Scan Begin	50 m/z	Set End Plate Offset	-500 V
Scan End	3000 m/z	Set Collision Cell RF	130.0 Vpp
		Set Nebulizer	1.2 Bar
		Set Dry Heater	200 °C
		Set Dry Gas	7.0 l/min
		Set Divert Valve	Waste



Display Report

Analysis Info

Analysis Name	D:\Data\user data\2015\MARCH-2015\24-MAR-2015\Dr.S.Kumar-AA-126_1-A,2_01_2002.d
Method	HRLCMS-20 Sept.m
Sample Name	Dr.S.Kumar-AA-126
Comment	

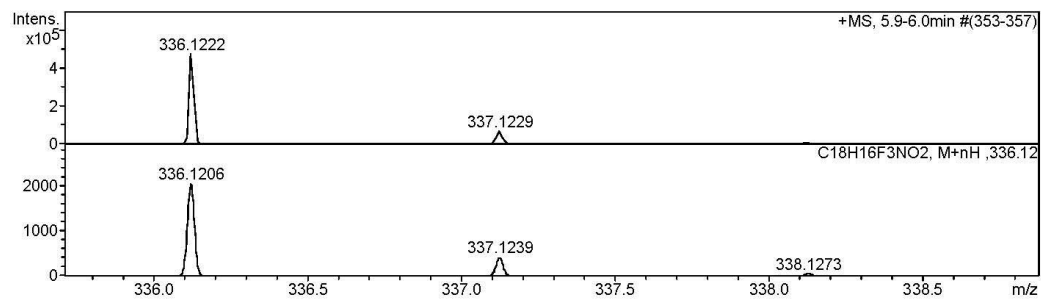
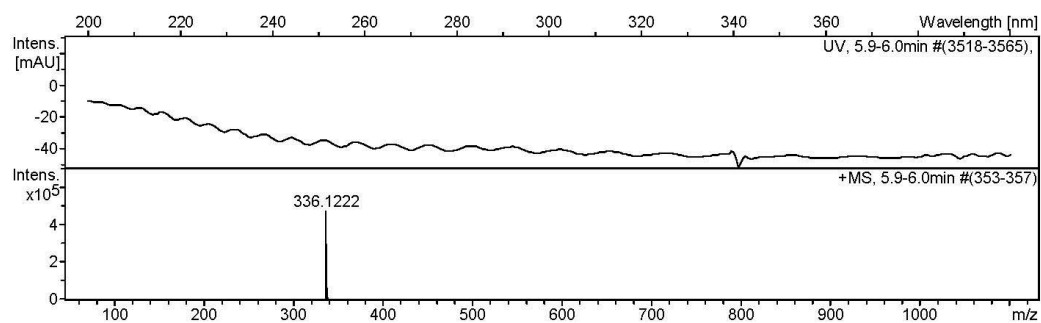
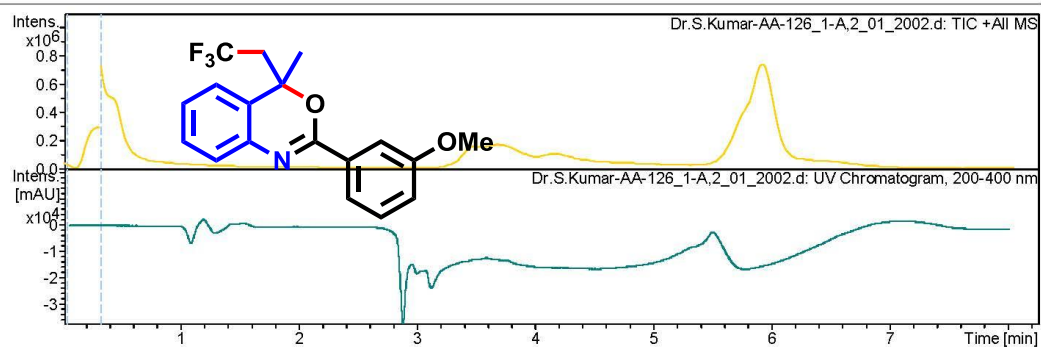
Acquisition Date 3/24/2015 12:47:14 PM

Operator RUCHI

Instrument microTOF-Q II 10330

Acquisition Parameter

Source Type	ESI	Ion Polarity	Positive
Focus	Active	Set Capillary	4500 V
Scan Begin	50 m/z	Set End Plate Offset	-500 V
Scan End	3000 m/z	Set Collision Cell RF	130.0 Vpp
		Set Nebulizer	1.2 Bar
		Set Dry Heater	200 °C
		Set Dry Gas	7.0 l/min
		Set Divert Valve	Waste



Display Report

Analysis Info

Analysis Name D:\Data\user data\2015\MAY-2015\15-MAY-2015\Dr.S.Kumar-AA-105_1-A,4_01_2510.d
Method HRLCMS-20 Sept.m
Sample Name Dr.S.Kumar-AA-105
Comment

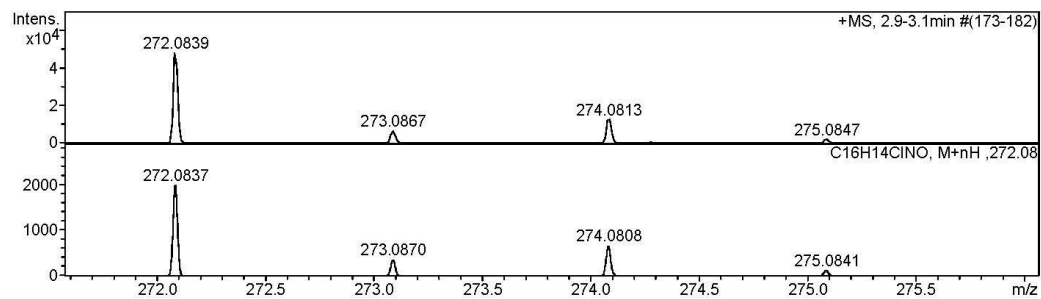
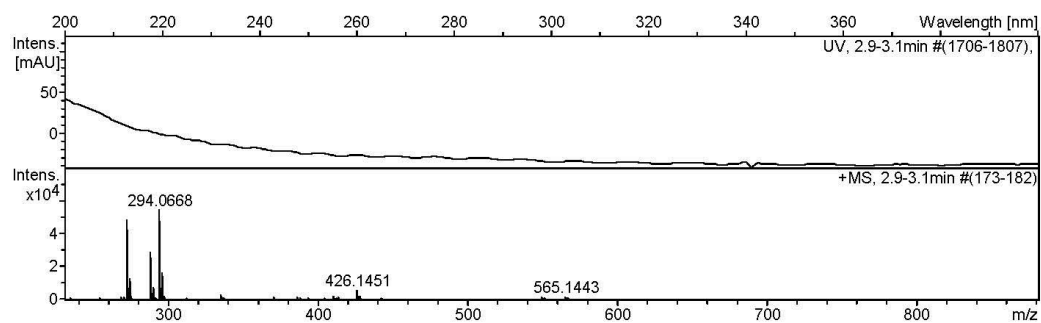
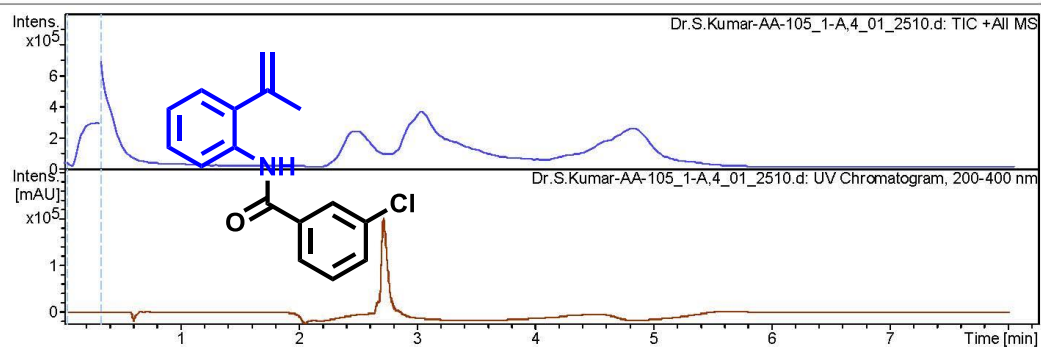
Acquisition Date 5/15/2015 11:30:58 AM

Operator RUCHI

Instrument microTOF-Q II 10330

Acquisition Parameter

Source Type	ESI	Ion Polarity	Positive	Set Nebulizer	1.2 Bar
Focus	Active	Set Capillary	4500 V	Set Dry Heater	200 °C
Scan Begin	50 m/z	Set End Plate Offset	-500 V	Set Dry Gas	7.0 l/min
Scan End	3000 m/z	Set Collision Cell RF	130.0 Vpp	Set Divert Valve	Waste



Display Report

Analysis Info

Analysis Name	D:\Data\user data\2015\MARCH-2015\19-MAR-2015\Dr.S.Kumar-SJ-AA-125_1-A_5_01_1939.d
Method	HRLCMS-20 Sept tune wide.m
Sample Name	Dr.S.Kumar-SJ-AA-125
Comment	

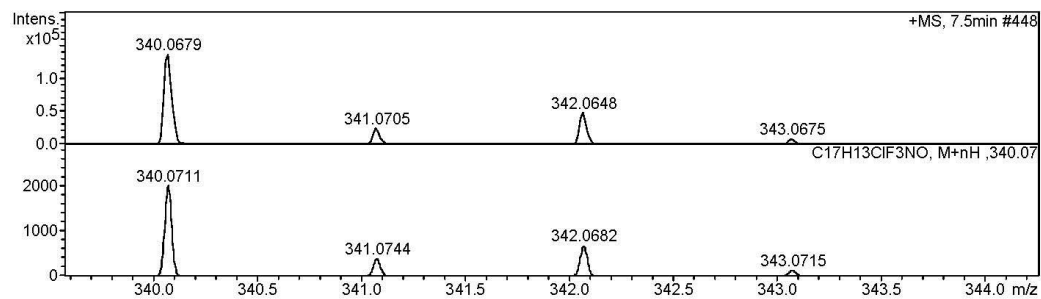
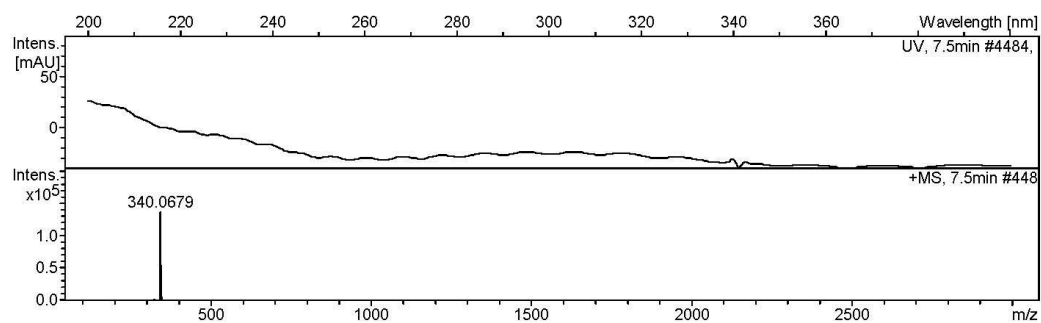
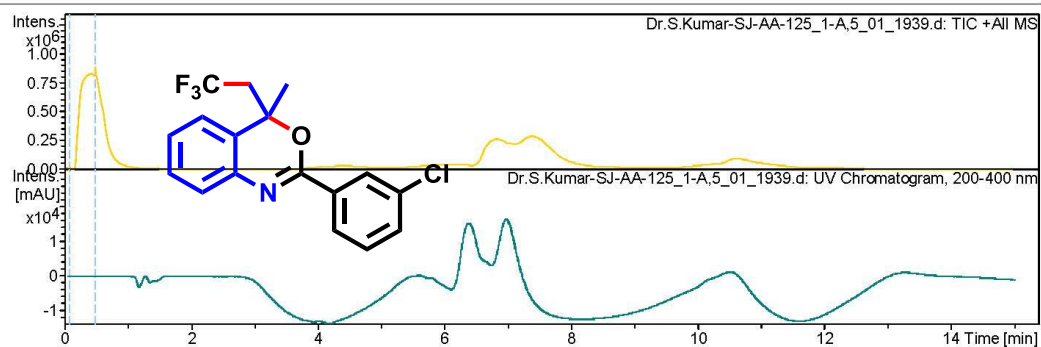
Acquisition Date 3/19/2015 1:11:31 PM

Operator RUCHI

Instrument microTOF-Q II 10330

Acquisition Parameter

Source Type	ESI	Ion Polarity	Positive
Focus	Not active	Set Capillary	4500 V
Scan Begin	50 m/z	Set End Plate Offset	-500 V
Scan End	3000 m/z	Set Collision Cell RF	600.0 Vpp
		Set Nebulizer	1.2 Bar
		Set Dry Heater	200 °C
		Set Dry Gas	7.0 l/min
		Set Divert Valve	Waste



Display Report

Analysis Info

Analysis Name D:\Data\user data\2015\MAY-2015\14-MAY-2015\Dr.S.Kumar-SJ-267_1-B,1_01_2491.d
Method HRLCMS-20 Sept.m
Sample Name Dr.S.Kumar-SJ-267
Comment

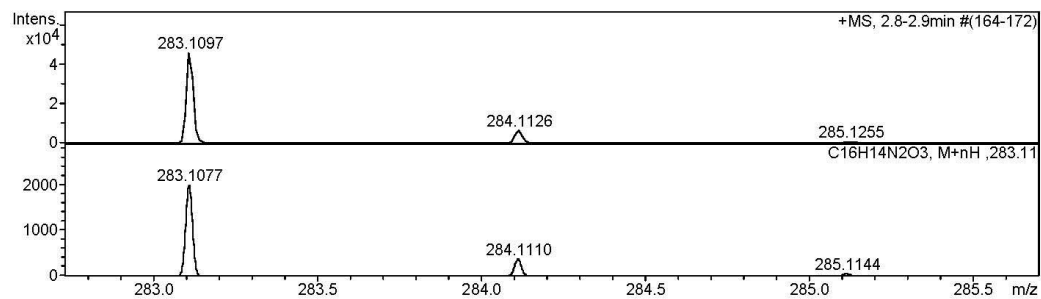
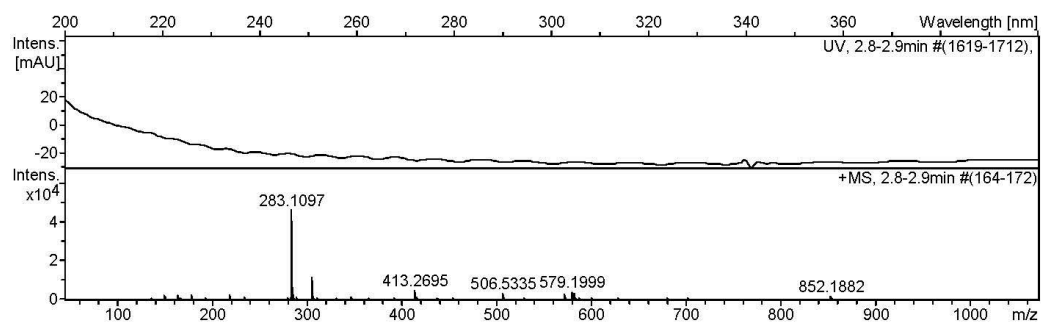
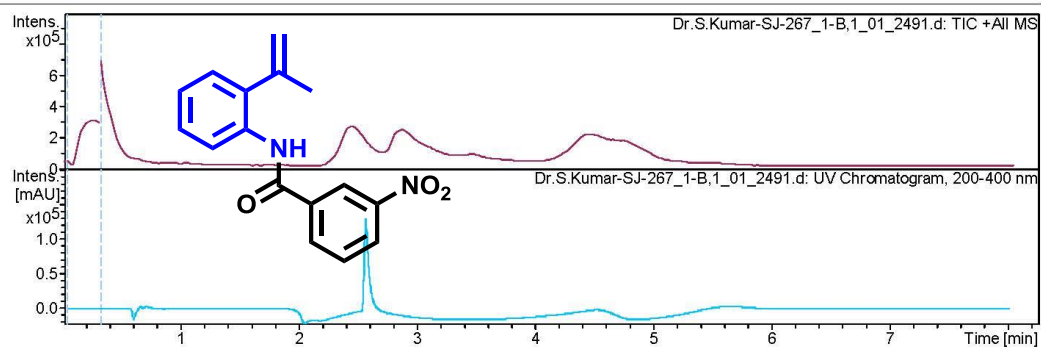
Acquisition Date 5/14/2015 12:15:03 PM

Operator RUCHI

Instrument microTOF-Q II 10330

Acquisition Parameter

Source Type	ESI	Ion Polarity	Positive	Set Nebulizer	1.2 Bar
Focus	Active	Set Capillary	4500 V	Set Dry Heater	200 °C
Scan Begin	50 m/z	Set End Plate Offset	-500 V	Set Dry Gas	7.0 l/min
Scan End	3000 m/z	Set Collision Cell RF	130.0 Vpp	Set Divert Valve	Waste



Display Report

Analysis Info

Analysis Name	D:\Data\user data\2015\MARCH-2015\16 MAR-2015\Dr.S.Kumar-SJ-317_1-A,8_01_1883.d
Method	HRLCMS-20 Sept.m
Sample Name	Dr.S.Kumar-SJ-317
Comment	

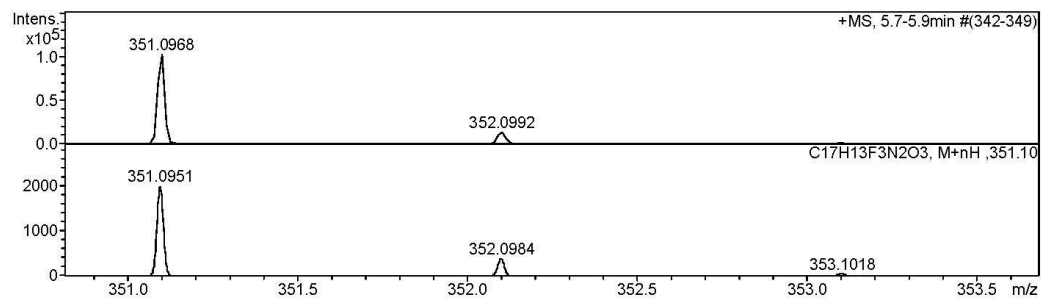
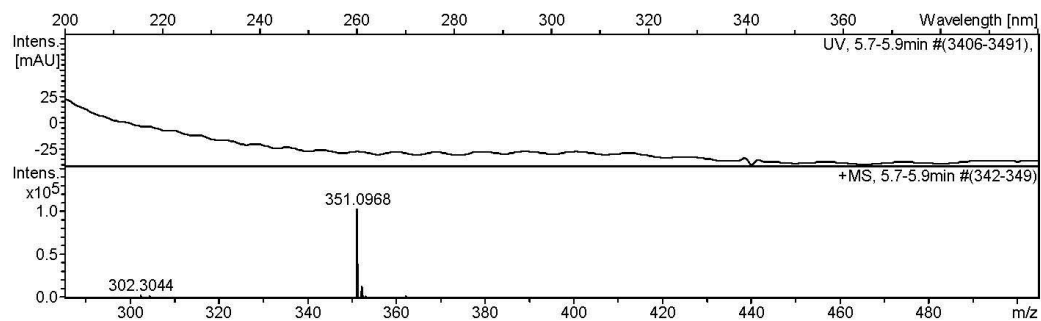
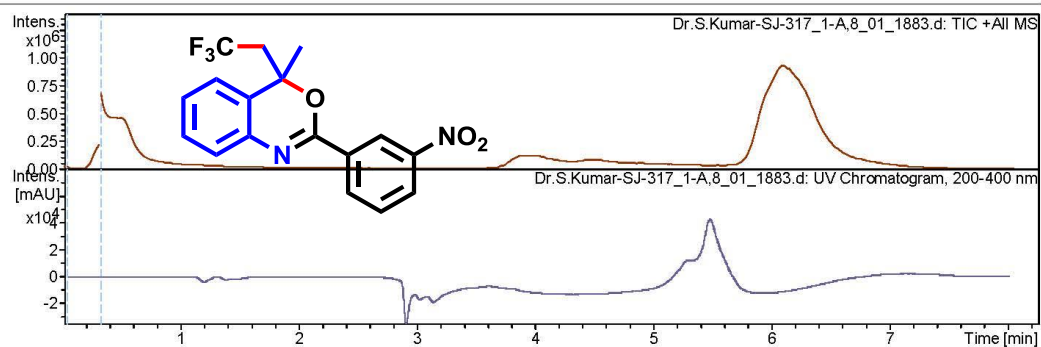
Acquisition Date 3/16/2015 12:59:42 PM

Operator RUCHI

Instrument microTOF-Q II 10330

Acquisition Parameter

Source Type	ESI	Ion Polarity	Positive
Focus	Active	Set Capillary	4500 V
Scan Begin	50 m/z	Set End Plate Offset	-500 V
Scan End	3000 m/z	Set Collision Cell RF	130.0 Vpp
		Set Nebulizer	1.2 Bar
		Set Dry Heater	200 °C
		Set Dry Gas	7.0 l/min
		Set Divert Valve	Waste



Display Report

Analysis Info

Analysis Name D:\Data\user data\2015\MAY-2015\14-MAY-2015\Dr.S.Kumar-AA-62_1-B,7_01_2498.d
Method HRLCMS-20 Sept.m
Sample Name Dr.S.Kumar-AA-62
Comment

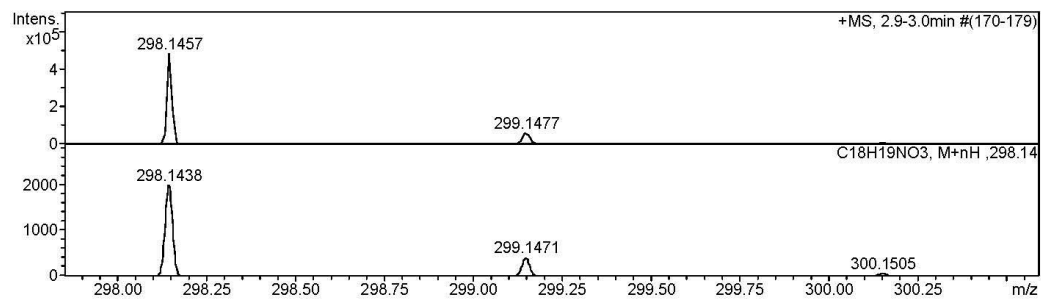
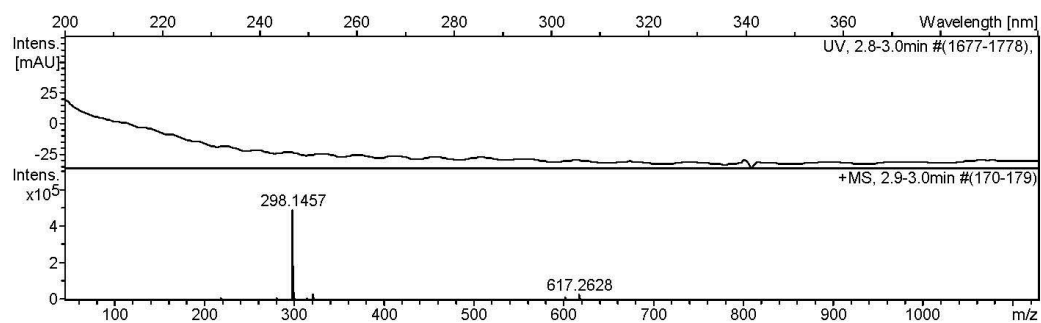
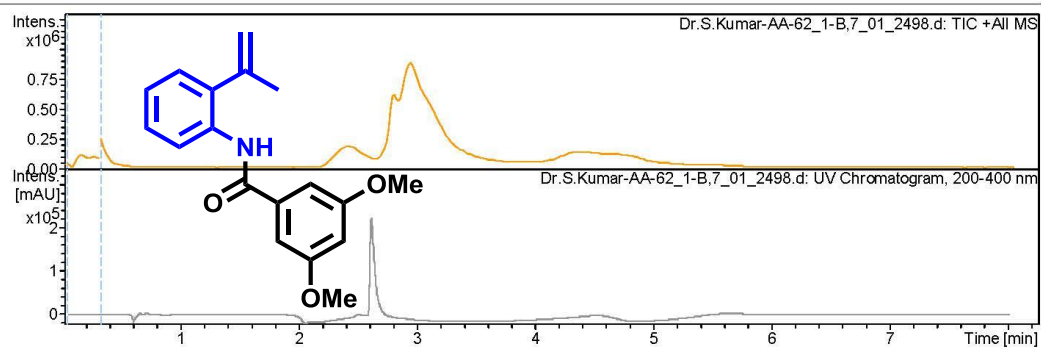
Acquisition Date 5/14/2015 1:41:16 PM

Operator RUCHI

Instrument microTOF-Q II 10330

Acquisition Parameter

Source Type	ESI	Ion Polarity	Positive	Set Nebulizer	1.2 Bar
Focus	Active	Set Capillary	4500 V	Set Dry Heater	200 °C
Scan Begin	50 m/z	Set End Plate Offset	-500 V	Set Dry Gas	7.0 l/min
Scan End	3000 m/z	Set Collision Cell RF	130.0 Vpp	Set Divert Valve	Waste



Display Report

Analysis Info

Analysis Name D:\Data\user data\2015\MAY-2015\09-may-2015\Dr.S.Kumar-AA-151.d
Method tune_low.m
Sample Name AA-151
Comment

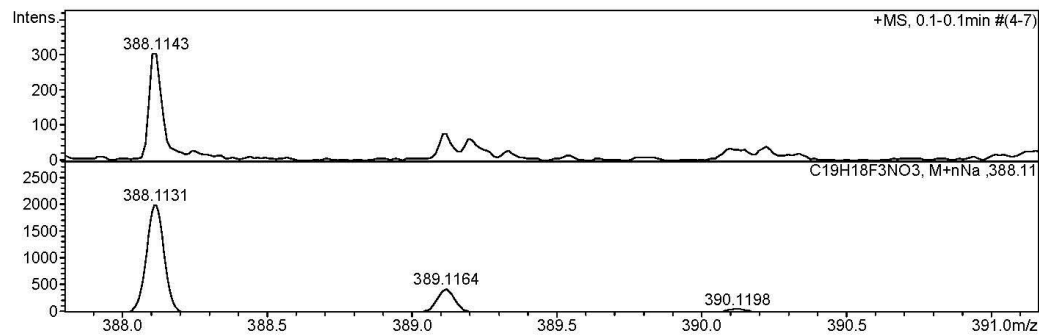
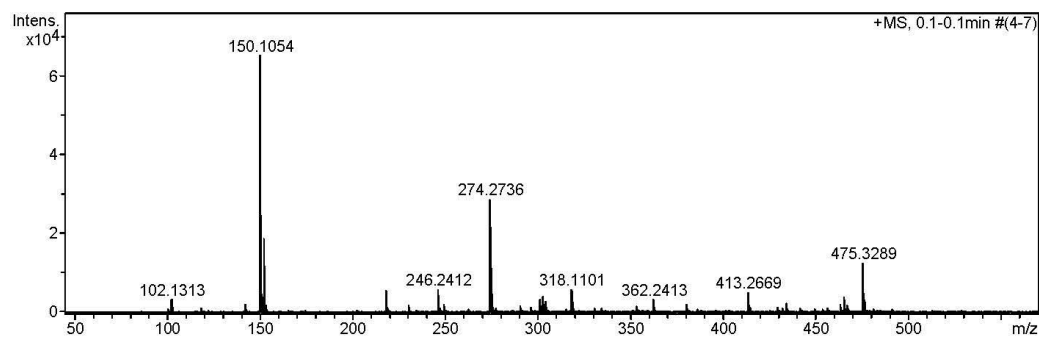
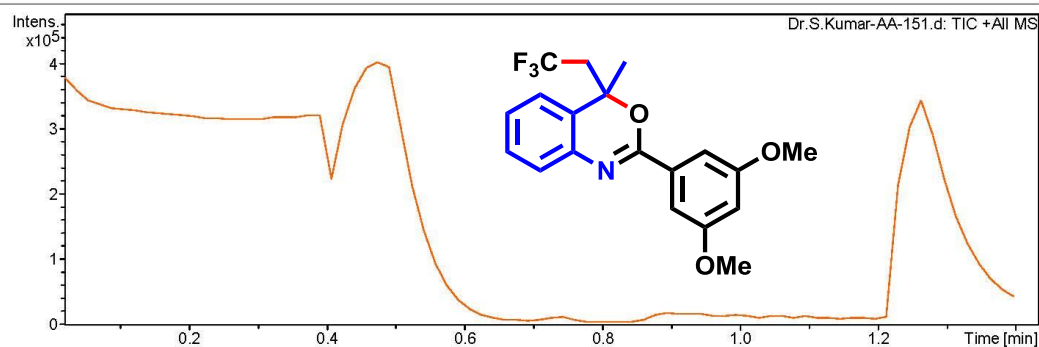
Acquisition Date 5/9/2015 12:33:52 PM

Operator RUCHI

Instrument micrOTOF-Q II 10330

Acquisition Parameter

Source Type	ESI	Ion Polarity	Positive	Set Nebulizer	0.4 Bar
Focus	Not active	Set Capillary	4600 V	Set Dry Heater	180 °C
Scan Begin	50 m/z	Set End Plate Offset	-500 V	Set Dry Gas	4.0 l/min
Scan End	3000 m/z	Set Collision Cell RF	130.0 Vpp	Set Divert Valve	Waste



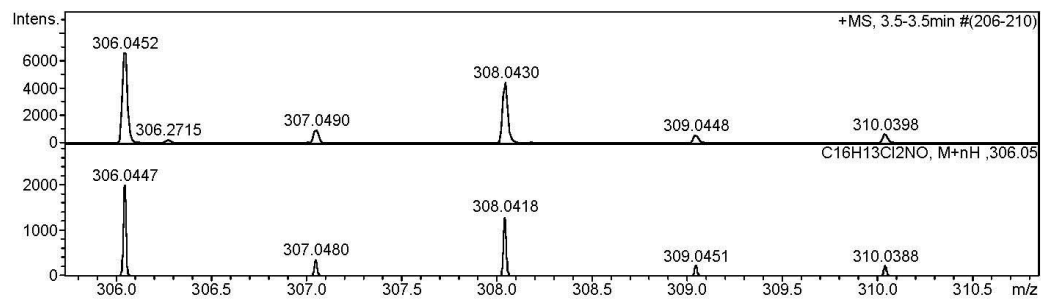
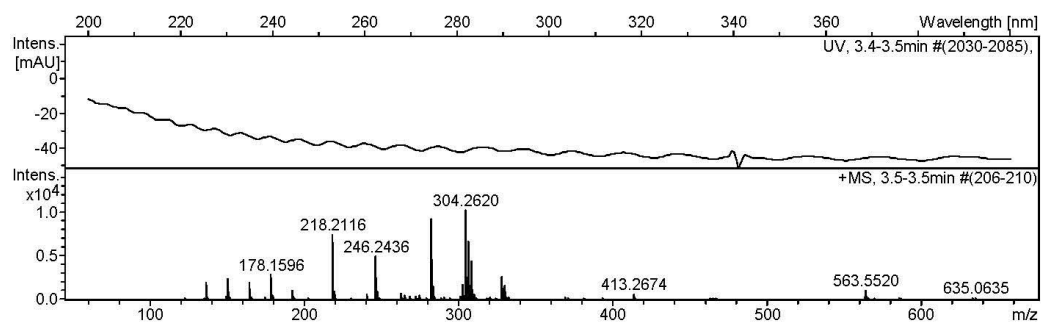
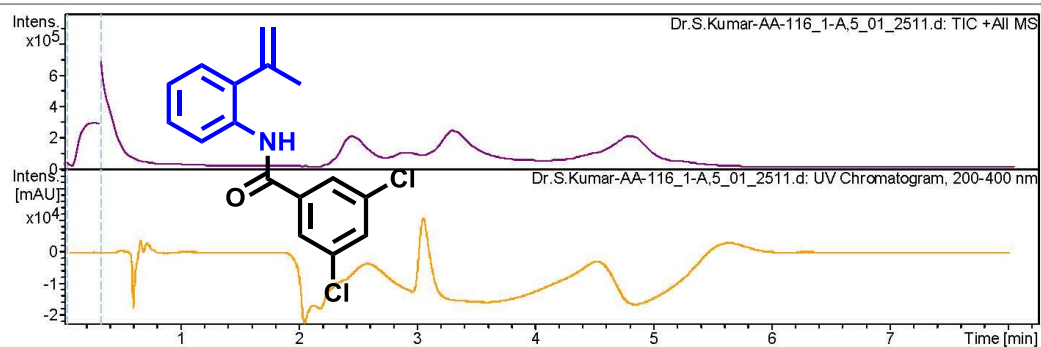
Display Report

Analysis Info

Analysis Name	D:\Data\user data\2015\MAY-2015\15-MAY-2015\Dr.S.Kumar-AA-116_1-A,5_01_2511.d
Method	HRLCMS-20 Sept.m
Sample Name	Dr.S.Kumar-AA-116
Comment	
Acquisition Date	5/15/2015 11:40:08 AM
Operator	RUCHI
Instrument	microTOF-Q II 10330

Acquisition Parameter

Source Type	ESI	Ion Polarity	Positive
Focus	Active	Set Capillary	4500 V
Scan Begin	50 m/z	Set End Plate Offset	-500 V
Scan End	3000 m/z	Set Collision Cell RF	130.0 Vpp
		Set Nebulizer	1.2 Bar
		Set Dry Heater	200 °C
		Set Dry Gas	7.0 l/min
		Set Divert Valve	Waste



Display Report

Analysis Info

Analysis Name D:\Data\user data\2015\MARCH-2015\31-mar-2015\Dr.S.Kumar-AA-129-1.d
Method tune_wide.m
Sample Name AA-129-1
Comment

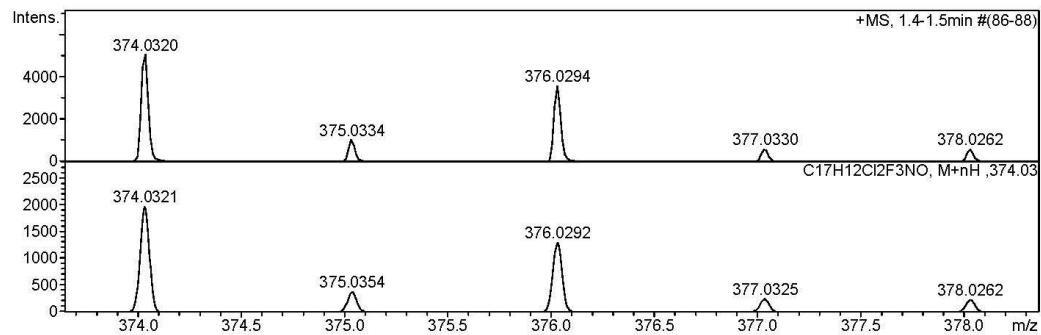
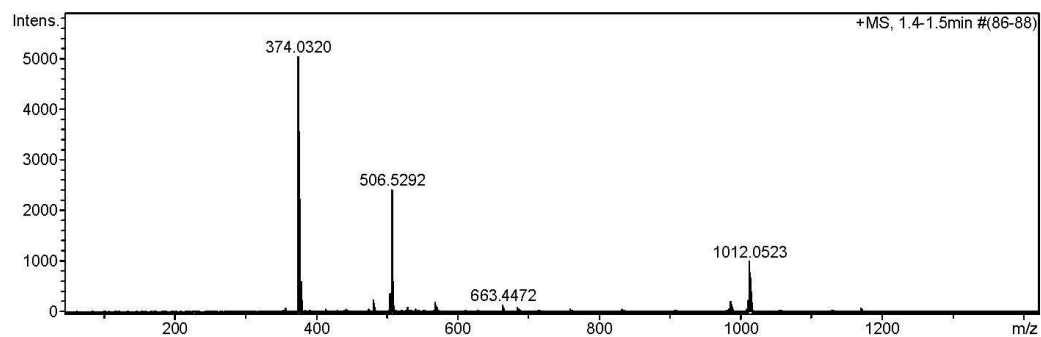
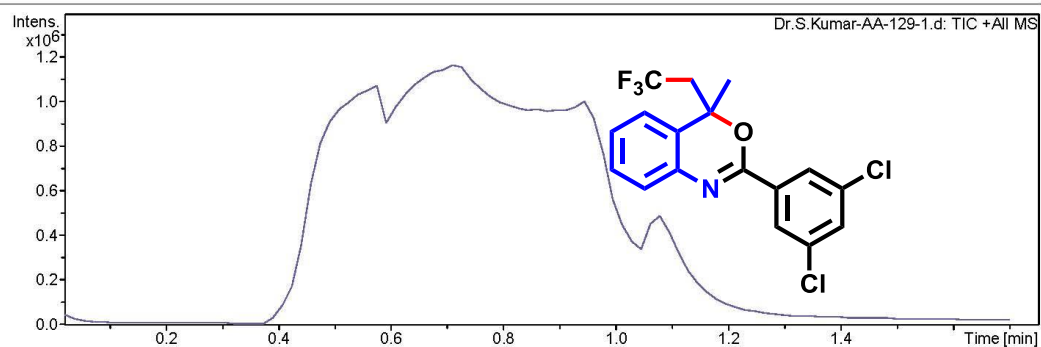
Acquisition Date 3/31/2015 12:04:56 PM

Operator RUCHI

Instrument micrOTOF-Q II 10330

Acquisition Parameter

Source Type	ESI	Ion Polarity	Positive	Set Nebulizer	0.4 Bar
Focus	Not active	Set Capillary	4500 V	Set Dry Heater	180 °C
Scan Begin	50 m/z	Set End Plate Offset	-500 V	Set Dry Gas	4.0 l/min
Scan End	3000 m/z	Set Collision Cell RF	600.0 Vpp	Set Divert Valve	Waste



Display Report

Analysis Info

Analysis Name D:\Data\user data\2015\MAY-2015\14-MAY-2015\Dr.S.Kumar-AA-80_1-B,4_01_2494.d
Method HRLCMS-20 Sept.m
Sample Name Dr.S.Kumar-AA-80
Comment

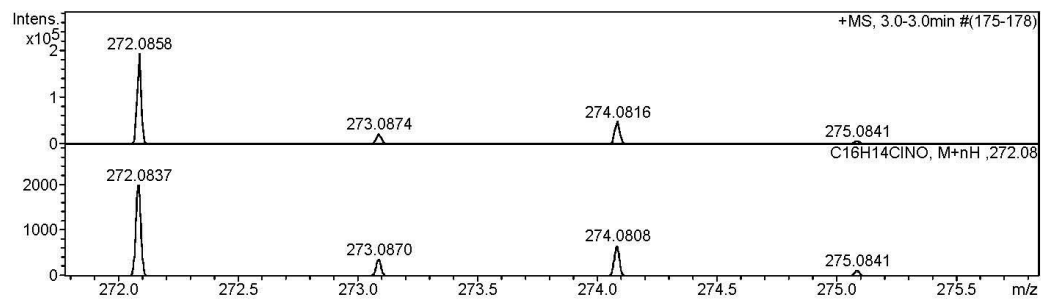
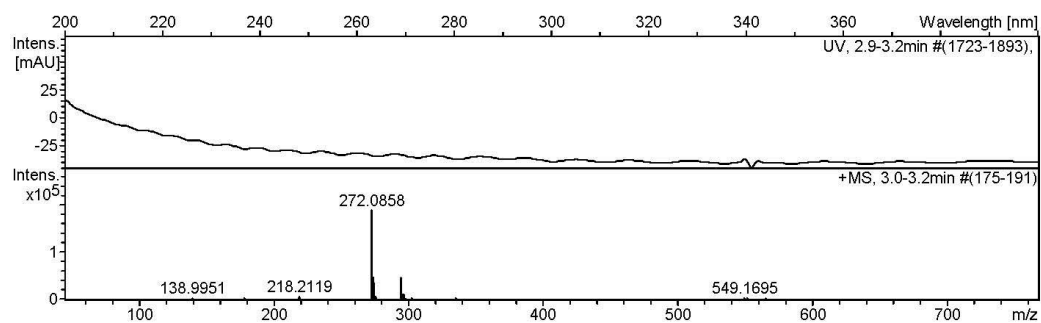
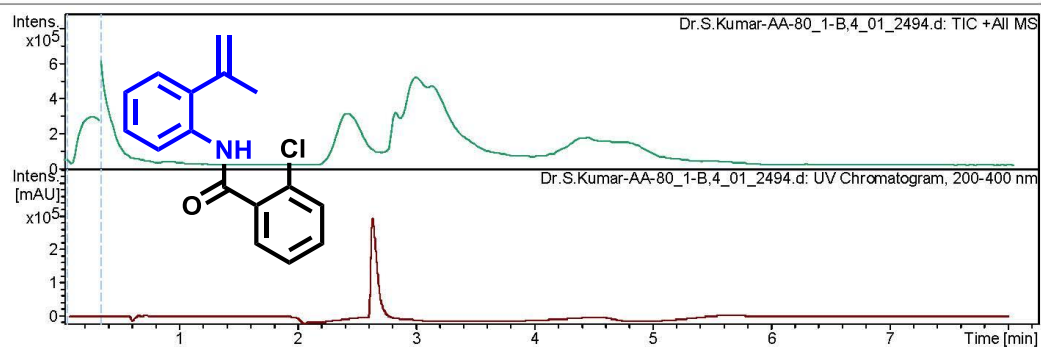
Acquisition Date 5/14/2015 12:42:33 PM

Operator RUCHI

Instrument micrOTOF-Q II 10330

Acquisition Parameter

Source Type	ESI	Ion Polarity	Positive	Set Nebulizer	1.2 Bar
Focus	Active	Set Capillary	4500 V	Set Dry Heater	200 °C
Scan Begin	50 m/z	Set End Plate Offset	-500 V	Set Dry Gas	7.0 l/min
Scan End	3000 m/z	Set Collision Cell RF	130.0 Vpp	Set Divert Valve	Waste



Display Report

Analysis Info

Analysis Name D:\Data\user data\2015\April-2015\22-April-2015\Dr.S.Kumar-AA-143.d
Method tune_low.m
Sample Name AA-143
Comment

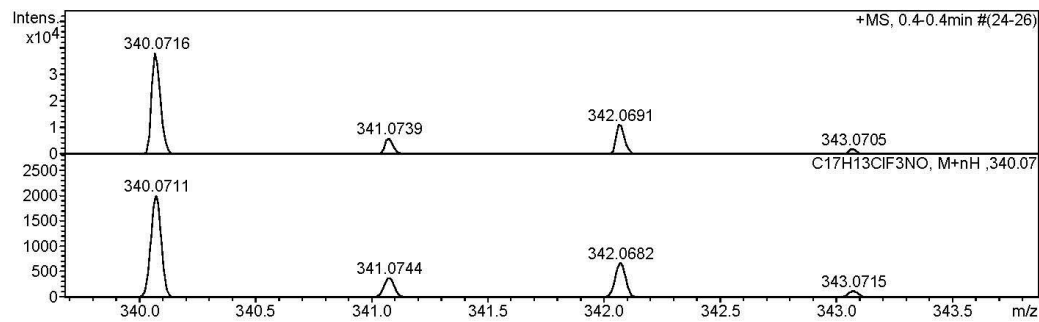
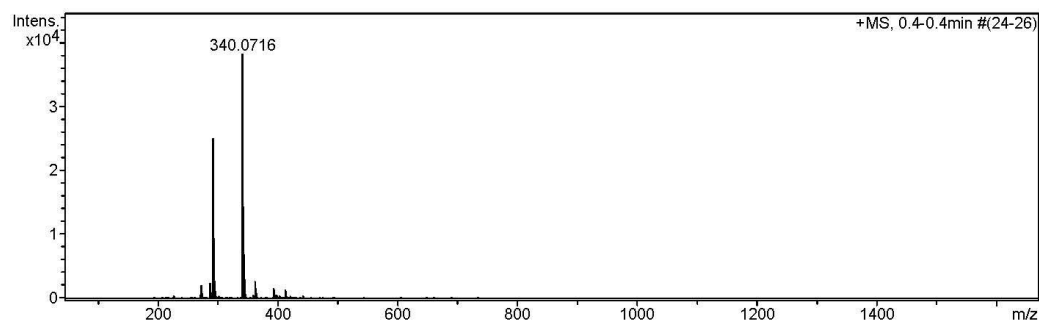
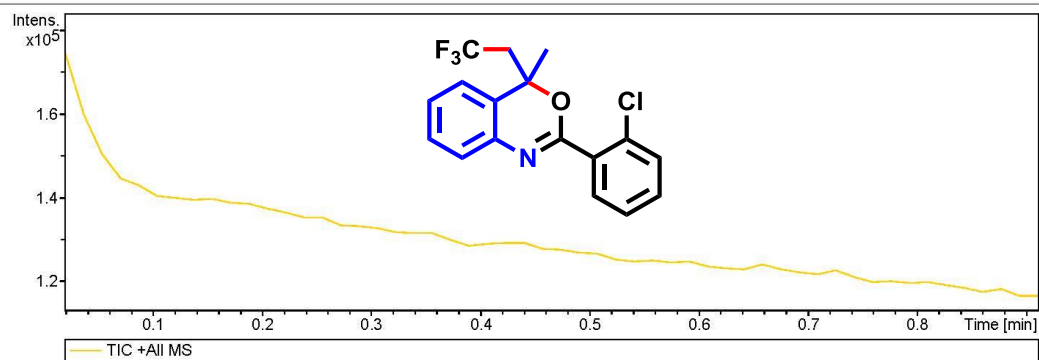
Acquisition Date 4/23/2015 4:19:15 PM

Operator RUCHI

Instrument micrOTOF-Q II 10330

Acquisition Parameter

Source Type	ESI	Ion Polarity	Positive	Set Nebulizer	0.4 Bar
Focus	Not active	Set Capillary	4600 V	Set Dry Heater	180 °C
Scan Begin	50 m/z	Set End Plate Offset	-500 V	Set Dry Gas	4.0 l/min
Scan End	3000 m/z	Set Collision Cell RF	330.0 Vpp	Set Divert Valve	Waste



Display Report

Analysis Info

Analysis Name D:\Data\user data\2015\MAY-2015\22-MAY-2015\Dr.S.Kumar-AA-66_1-A_6_01_2585.d
Method HRLCMS-20 Sept.m
Sample Name Dr.S.Kumar-AA-66
Comment

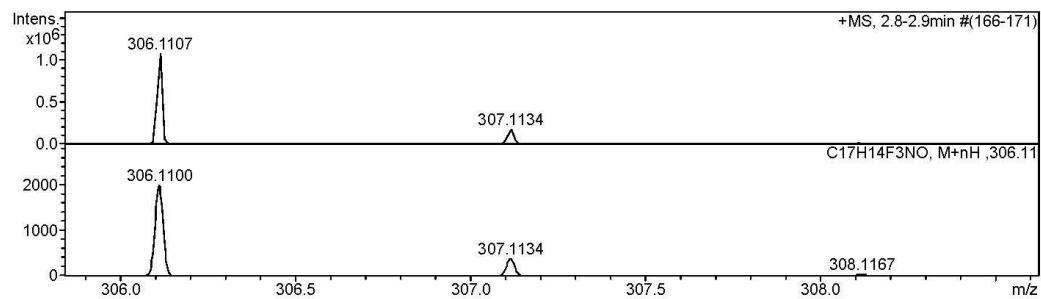
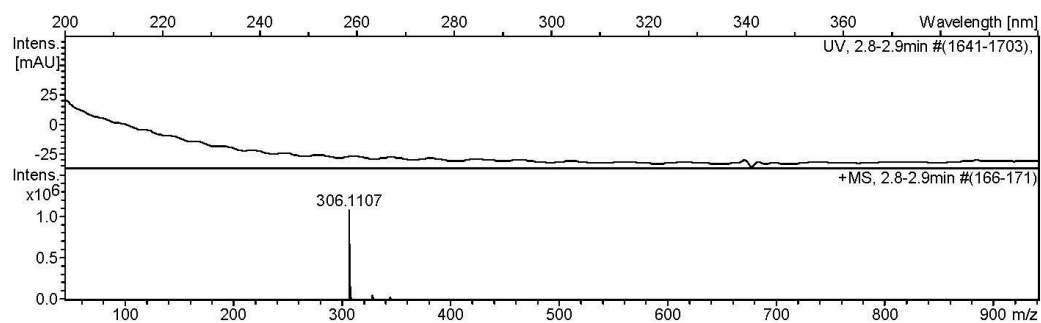
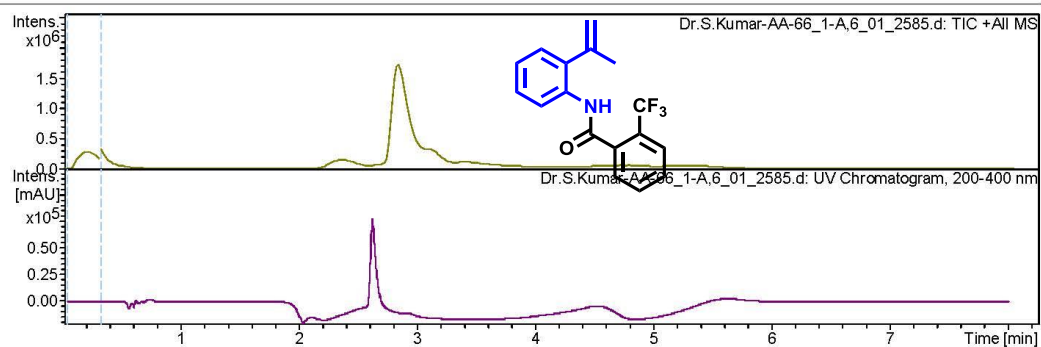
Acquisition Date 5/22/2015 11:01:58 AM

Operator RUCHI

Instrument microTOF-Q II 10330

Acquisition Parameter

Source Type	ESI	Ion Polarity	Positive	Set Nebulizer	1.2 Bar
Focus	Active	Set Capillary	4500 V	Set Dry Heater	200 °C
Scan Begin	50 m/z	Set End Plate Offset	-500 V	Set Dry Gas	7.0 l/min
Scan End	3000 m/z	Set Collision Cell RF	130.0 Vpp	Set Divert Valve	Waste



Display Report

Analysis Info

Analysis Name D:\Data\user data\2015\MAY-2015\19-MAY-2015\Dr.S.Kumar-AA-158-1.d
Method tune_low.m
Sample Name AA-158-1
Comment

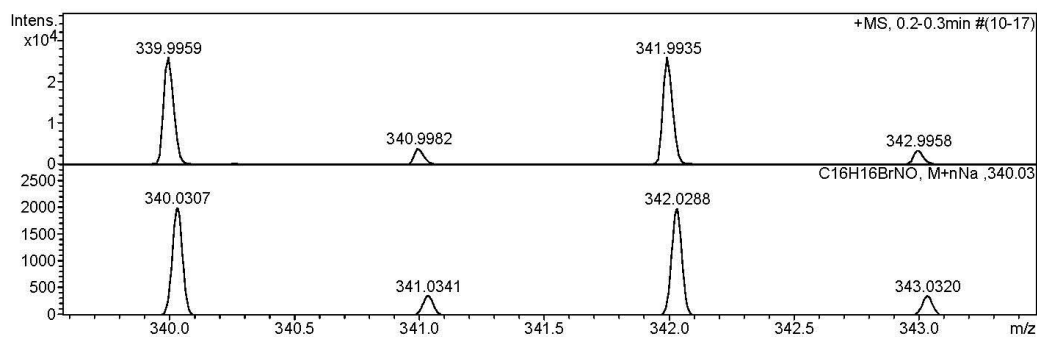
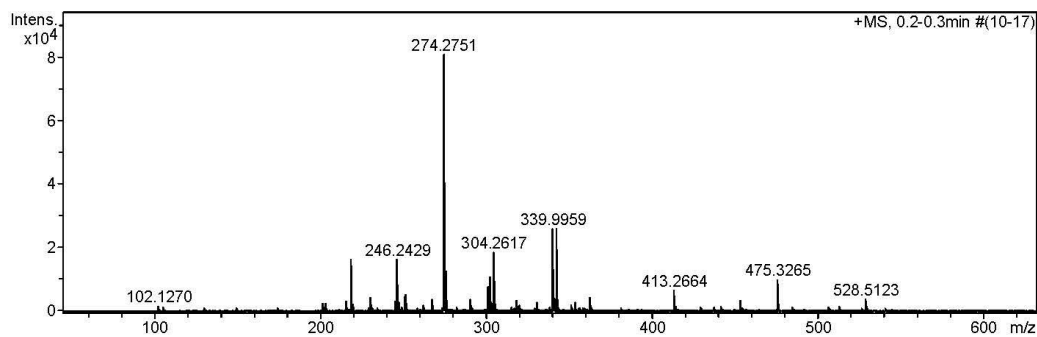
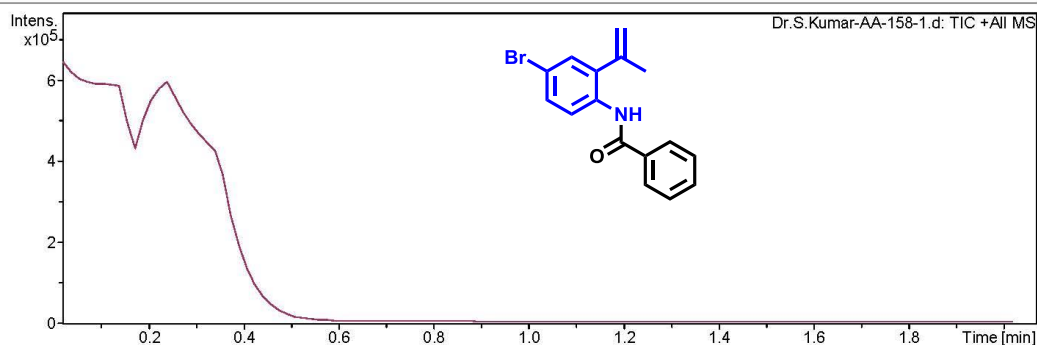
Acquisition Date 5/19/2015 4:56:49 PM

Operator RUCHI

Instrument microTOF-Q II 10330

Acquisition Parameter

Source Type	ESI	Ion Polarity	Positive	Set Nebulizer	0.4 Bar
Focus	Not active	Set Capillary	4600 V	Set Dry Heater	180 °C
Scan Begin	50 m/z	Set End Plate Offset	-500 V	Set Dry Gas	4.0 l/min
Scan End	3000 m/z	Set Collision Cell RF	130.0 Vpp	Set Divert Valve	Waste



Display Report

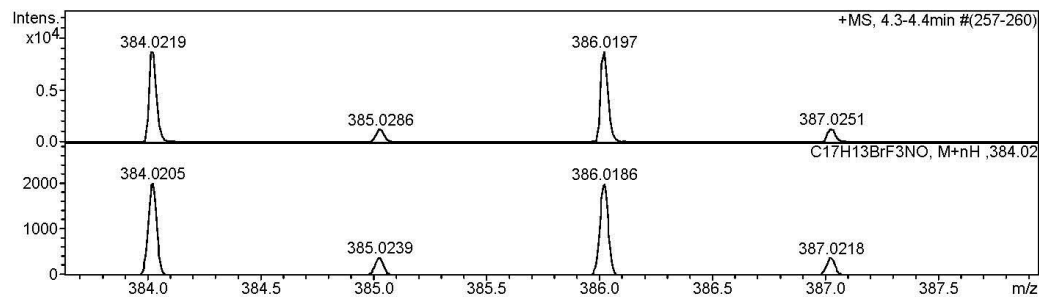
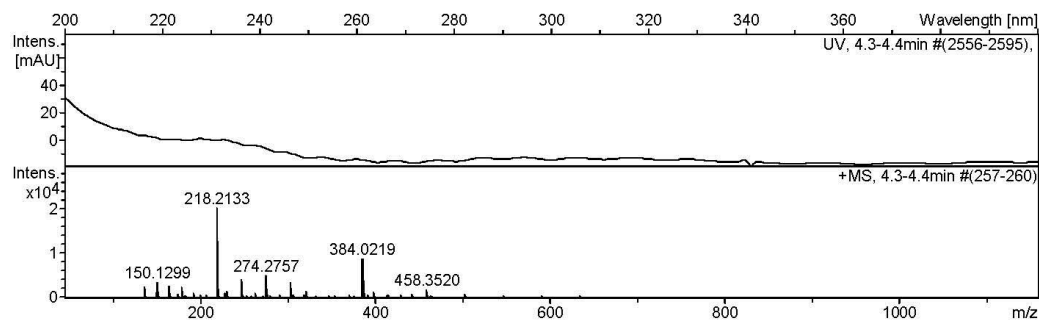
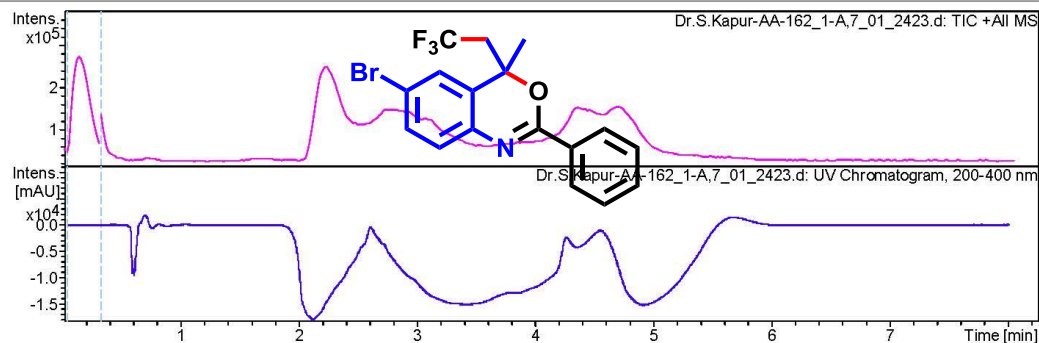
Analysis Info

Analysis Name	D:\Data\user data\2015\MAY-2015\08-MAY-2015\Dr.S.Kapur-AA-162_1-A,7_01_2423.d
Method	HRLCMS-20 Sept.m
Sample Name	Dr.S.Kapur-AA-162
Comment	

Acquisition Date	5/8/2015 2:59:14 PM
Operator	RUCHI
Instrument	microTOF-Q II 10330

Acquisition Parameter

Source Type	ESI	Ion Polarity	Positive
Focus	Active	Set Capillary	4500 V
Scan Begin	50 m/z	Set End Plate Offset	-500 V
Scan End	3000 m/z	Set Collision Cell RF	130.0 Vpp
		Set Nebulizer	1.2 Bar
		Set Dry Heater	200 °C
		Set Dry Gas	7.0 l/min
		Set Divert Valve	Waste



Display Report

Analysis Info

Analysis Name D:\Data\user data\2015\MAY-2015\18-MAY-2015\Dr.S.Kumar-AA-157_1-A,4_01_2523.d
Method HRLCMS-20 Sept.m
Sample Name Dr.S.Kumar-AA-157
Comment

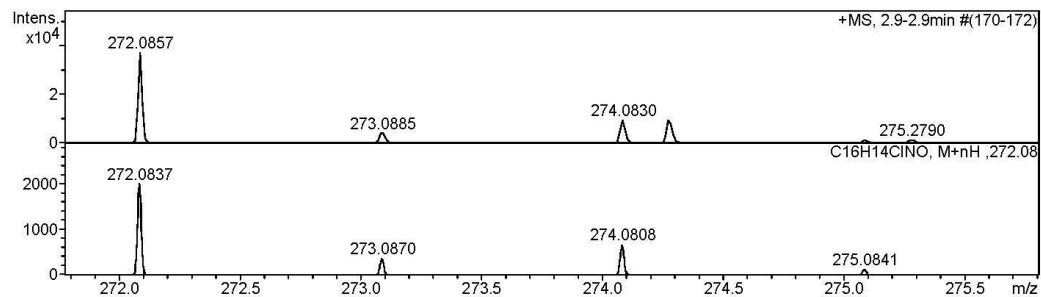
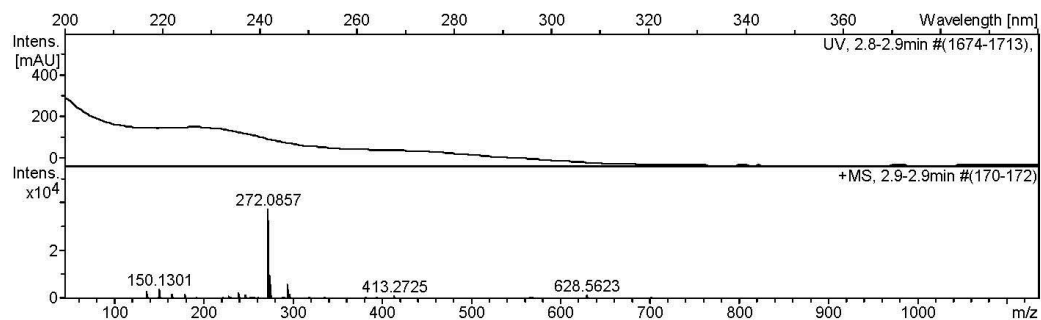
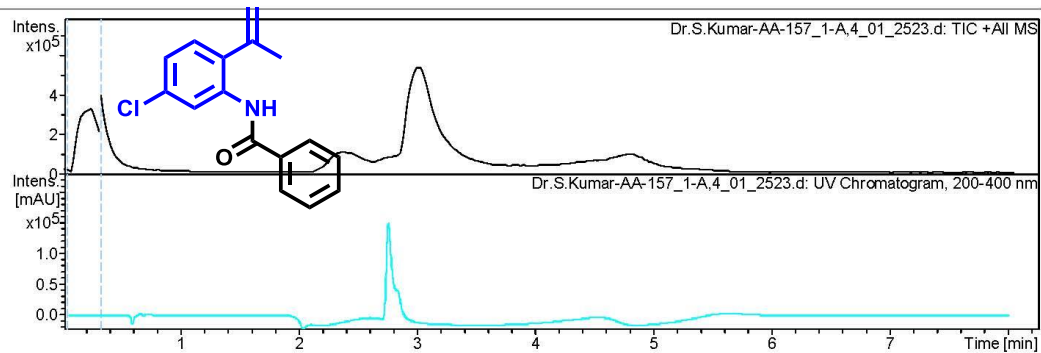
Acquisition Date 5/18/2015 11:58:39 AM

Operator RUCHI

Instrument microTOF-Q II 10330

Acquisition Parameter

Source Type	ESI	Ion Polarity	Positive	Set Nebulizer	1.2 Bar
Focus	Active	Set Capillary	4500 V	Set Dry Heater	200 °C
Scan Begin	50 m/z	Set End Plate Offset	-500 V	Set Dry Gas	7.0 l/min
Scan End	3000 m/z	Set Collision Cell RF	130.0 Vpp	Set Divert Valve	Waste



Display Report

Analysis Info

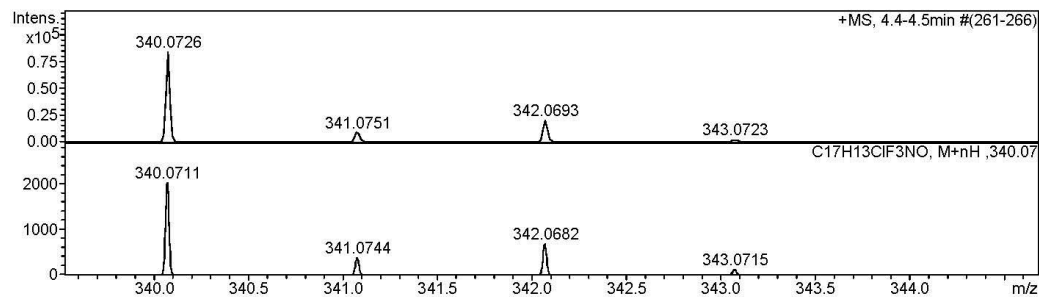
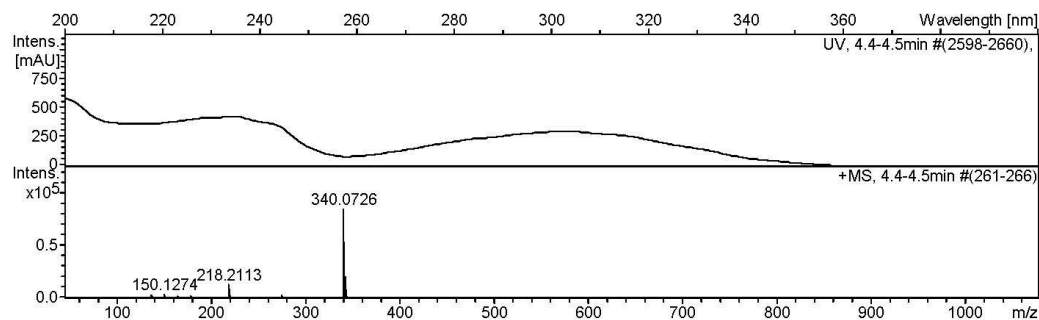
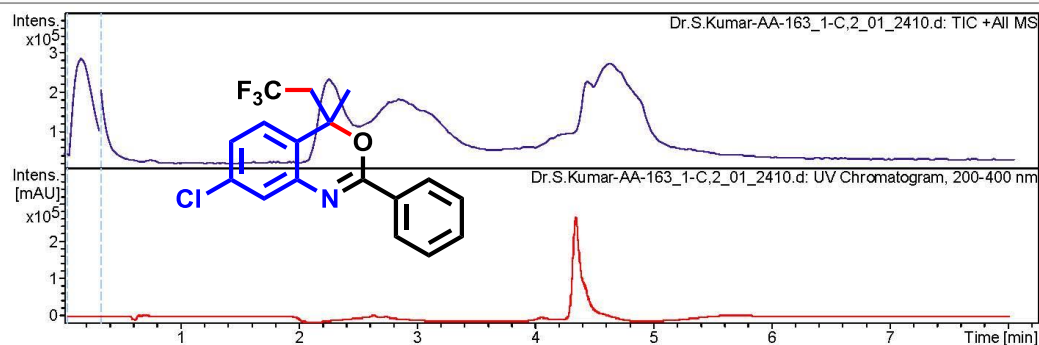
Analysis Name	D:\Data\user data\2015\MAY-2015\07-MAY-2015\Dr.S.Kumar-AA-163_1-C,2_01_2410.d
Method	HRLCMS-20 Sept.m
Sample Name	Dr.S.Kumar-AA-163
Comment	

Acquisition Date	5/7/2015 2:53:26 PM
Operator	RUCHI
Instrument	microTOF-Q II 10330

Acquisition Parameter

Source Type	ESI	Ion Polarity	Positive
Focus	Active	Set Capillary	4500 V
Scan Begin	50 m/z	Set End Plate Offset	-500 V
Scan End	3000 m/z	Set Collision Cell RF	130.0 Vpp

Set Nebulizer	1.2 Bar
Set Dry Heater	200 °C
Set Dry Gas	7.0 l/min
Set Divert Valve	Waste



Display Report

Analysis Info

Analysis Name	D:\Data\user data\2015\MARCH-2015\30-MAR-2015\Dr.S.Kumar-SJ-AA-127_1-B,2_01_2033.d
Method	HRLCMS-20 Sept.m
Sample Name	Dr.S.Kumar-SJ-AA-127
Comment	

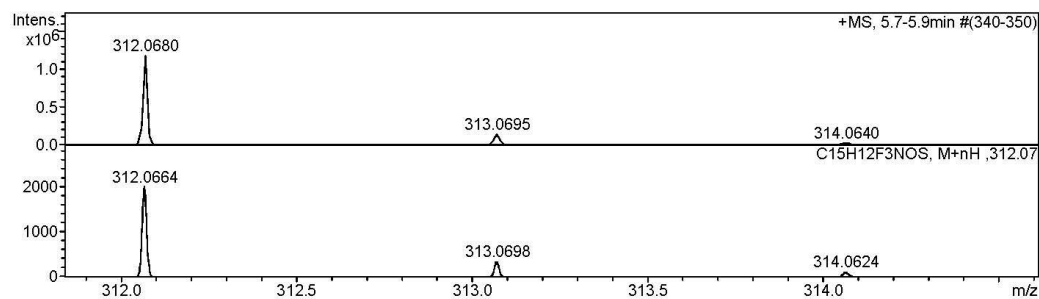
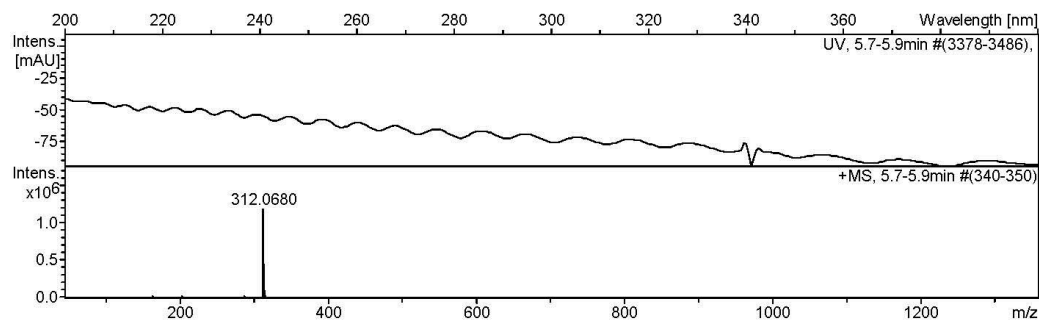
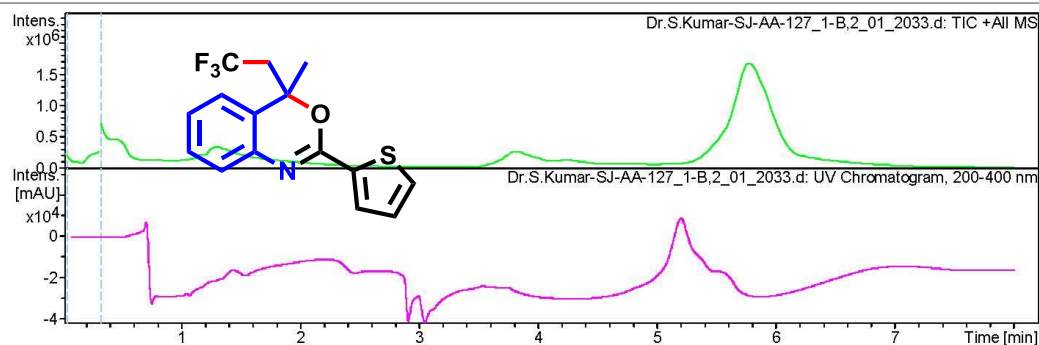
Acquisition Date 3/30/2015 2:38:16 PM

Operator RUCHI

Instrument micrOTOF-Q II 10330

Acquisition Parameter

Source Type	ESI	Ion Polarity	Positive
Focus	Active	Set Nebulizer	1.2 Bar
Scan Begin	50 m/z	Set Dry Heater	200 °C
Scan End	3000 m/z	Set Dry Gas	7.0 l/min
		Set End Plate Offset	-500 V
		Set Collision Cell RF	130.0 Vpp
		Set Divert Valve	Waste



Display Report

Analysis Info

Analysis Name	D:\Data\user data\2015\MAY-2015\18-MAY-2015\Dr.S.Kumar-SJ-310_1-A,2_01_2521.d
Method	HRLCMS-20 Sept.m
Sample Name	Dr.S.Kumar-SJ-310
Comment	

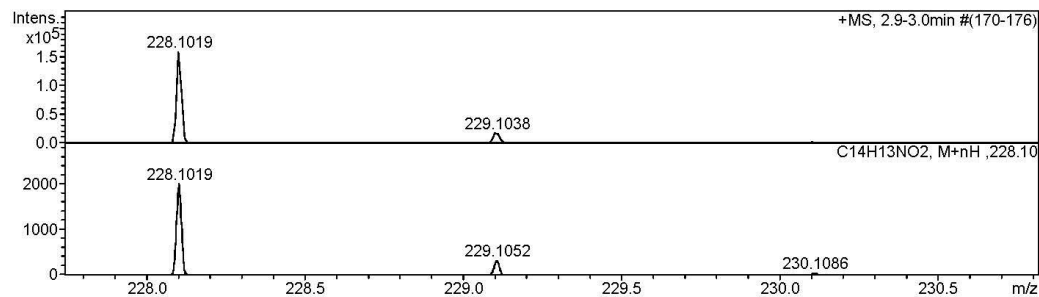
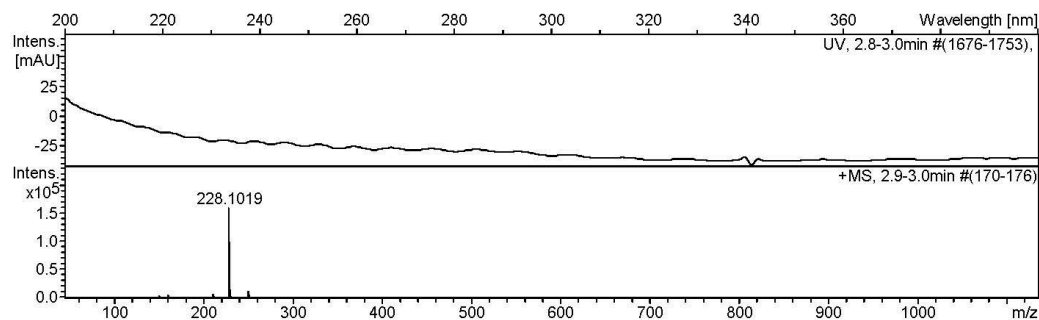
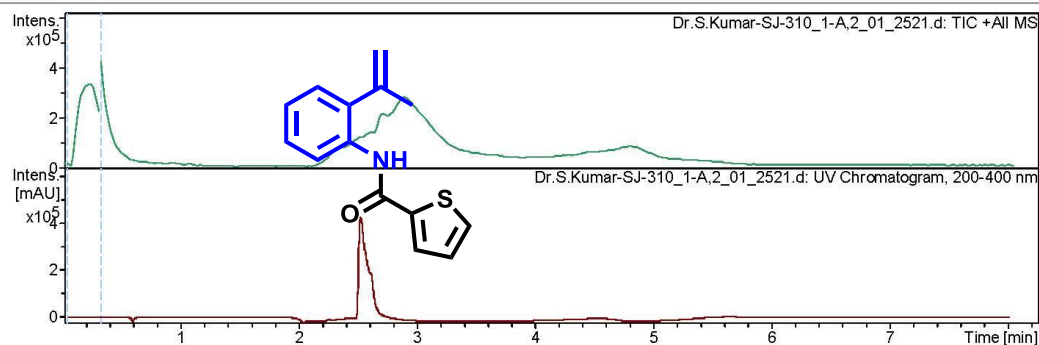
Acquisition Date 5/18/2015 11:41:16 AM

Operator RUCHI

Instrument microTOF-Q II 10330

Acquisition Parameter

Source Type	ESI	Ion Polarity	Positive
Focus	Active	Set Capillary	4500 V
Scan Begin	50 m/z	Set End Plate Offset	-500 V
Scan End	3000 m/z	Set Collision Cell RF	130.0 Vpp
		Set Nebulizer	1.2 Bar
		Set Dry Heater	200 °C
		Set Dry Gas	7.0 l/min
		Set Divert Valve	Waste



Display Report

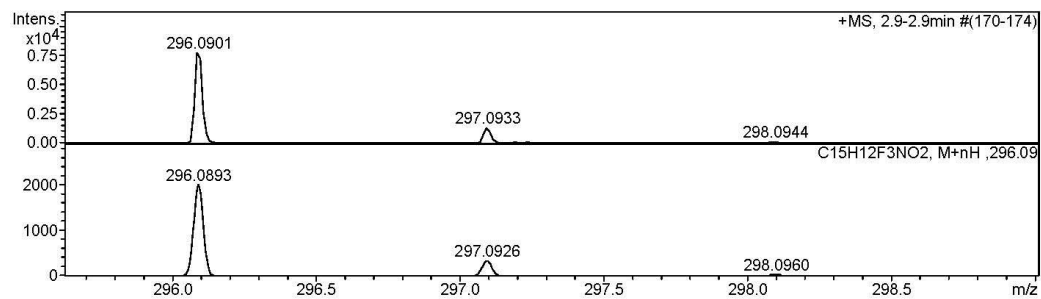
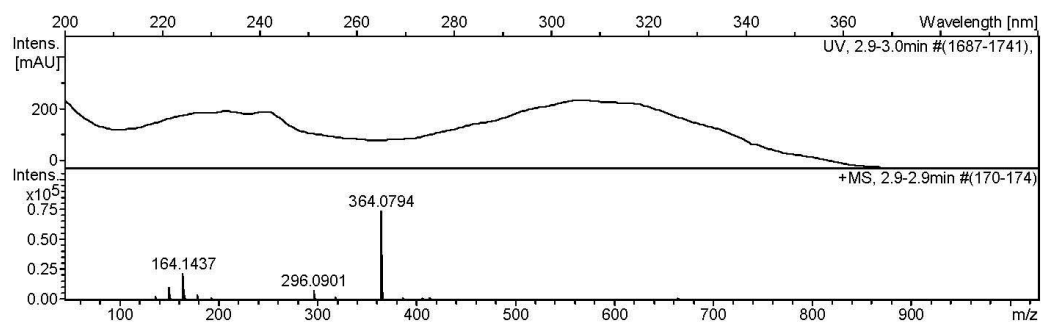
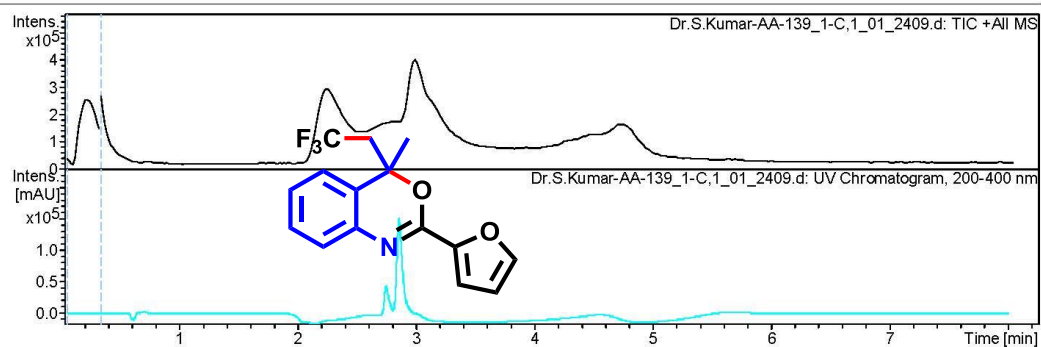
Analysis Info

Analysis Name D:\Data\user data\2015\MAY-2015\07-MAY-2015\Dr.S.Kumar-AA-139_1-C,1_01_2409.d
Method HRLCMS-20 Sept.m
Sample Name Dr.S.Kumar-AA-139
Comment

Acquisition Date 5/7/2015 2:44:18 PM
Operator RUCHI
Instrument microTOF-Q II 10330

Acquisition Parameter

Source Type	ESI	Ion Polarity	Positive	Set Nebulizer	1.2 Bar
Focus	Active	Set Capillary	4500 V	Set Dry Heater	200 °C
Scan Begin	50 m/z	Set End Plate Offset	-500 V	Set Dry Gas	7.0 l/min
Scan End	3000 m/z	Set Collision Cell RF	130.0 Vpp	Set Divert Valve	Waste



Display Report

Analysis Info

Analysis Name	D:\Data\user data\2015\MAY-2015\18-MAY-2015\Dr.S.Kumar-AA-148_1-A,3_01_2522.d
Method	HRLCMS-20 Sept.m
Sample Name	Dr.S.Kumar-AA-148
Comment	

Acquisition Date 5/18/2015 11:50:25 AM

Operator RUCHI

Instrument microTOF-Q II 10330

Acquisition Parameter

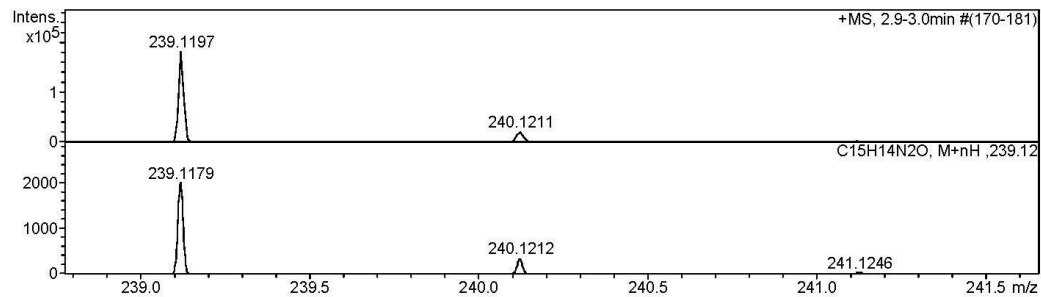
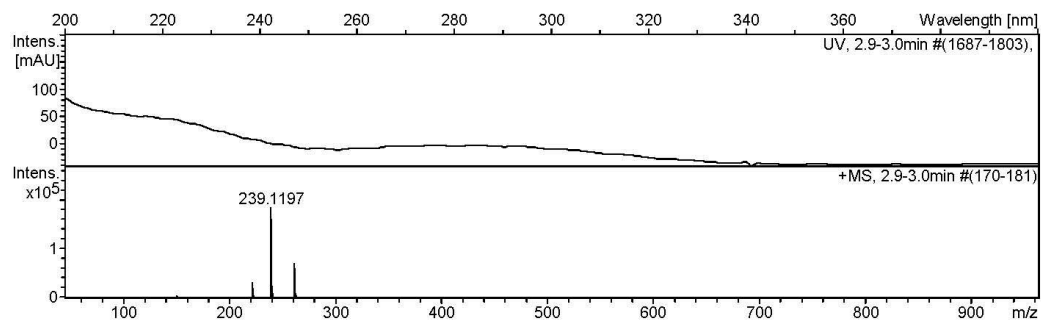
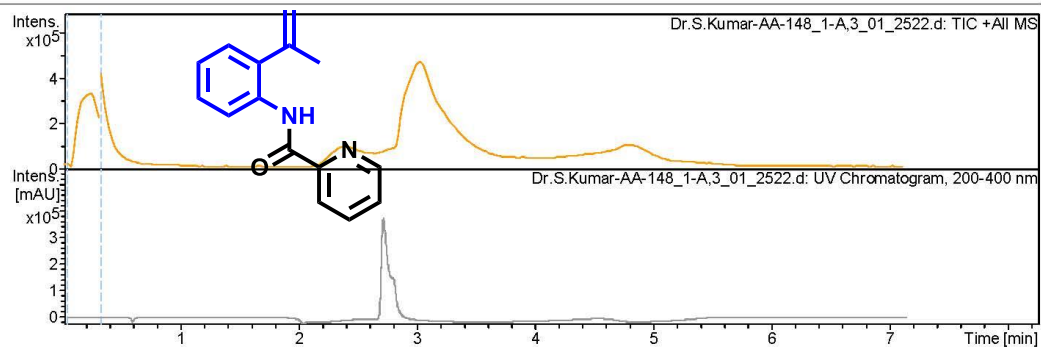
Source Type	ESI	Ion Polarity	Positive
Focus	Active	Set Capillary	4500 V
Scan Begin	50 m/z	Set End Plate Offset	-500 V
Scan End	3000 m/z	Set Collision Cell RF	130.0 Vpp

Set Nebulizer 1.2 Bar

Set Dry Heater 200 °C

Set Dry Gas 7.0 l/min

Set Divert Valve Waste



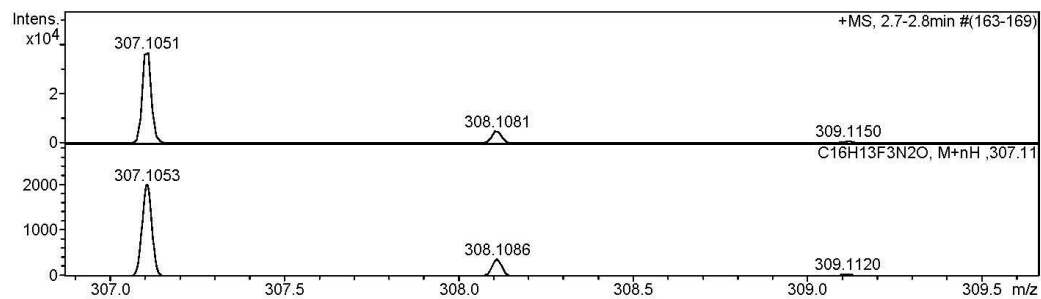
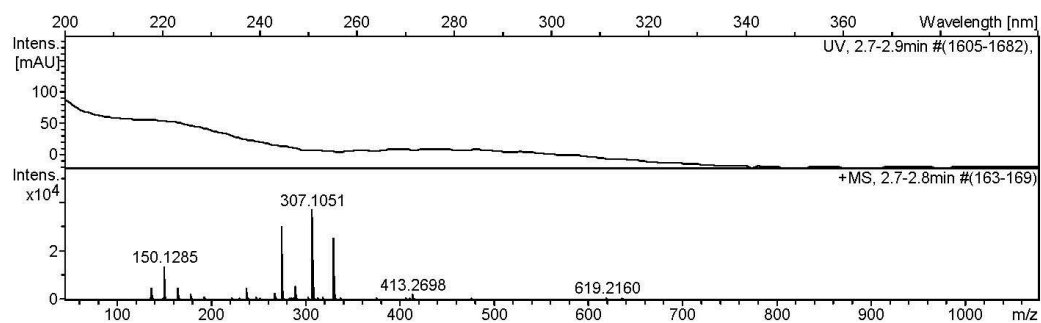
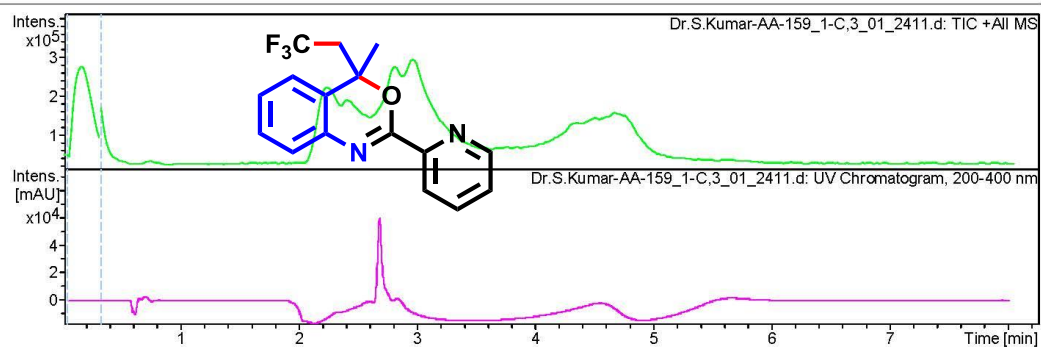
Display Report

Analysis Info

Analysis Name	D:\Data\user data\2015\MAY-2015\07-MAY-2015\Dr.S.Kumar-AA-159_1-C,3_01_2411.d
Method	HRLCMS-20 Sept.m
Sample Name	Dr.S.Kumar-AA-159
Comment	
Acquisition Date	5/7/2015 3:02:36 PM
Operator	RUCHI
Instrument	microTOF-Q II 10330

Acquisition Parameter

Source Type	ESI	Ion Polarity	Positive
Focus	Active	Set Capillary	4500 V
Scan Begin	50 m/z	Set End Plate Offset	-500 V
Scan End	3000 m/z	Set Collision Cell RF	130.0 Vpp
		Set Nebulizer	1.2 Bar
		Set Dry Heater	200 °C
		Set Dry Gas	7.0 l/min
		Set Divert Valve	Waste



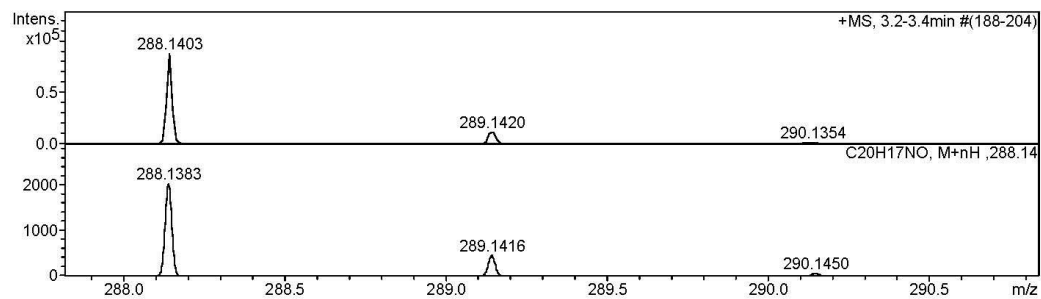
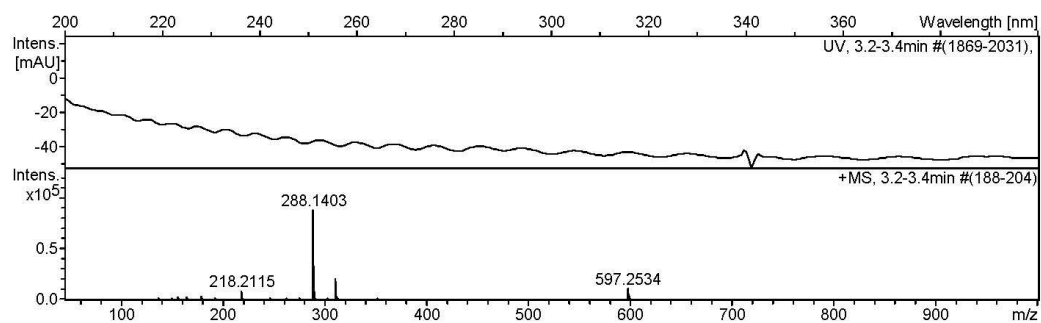
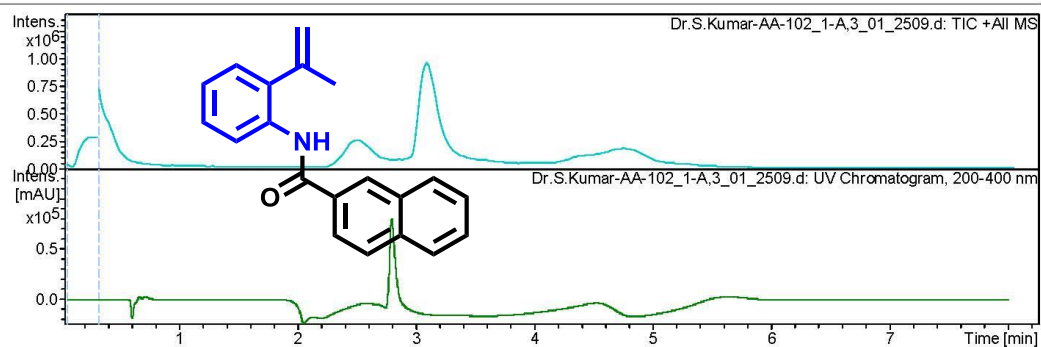
Display Report

Analysis Info

Analysis Name	D:\Data\user data\2015\MAY-2015\15-MAY-2015\Dr.S.Kumar-AA-102_1-A,3_01_2509.d
Method	HRLCMS-20 Sept.m
Sample Name	Dr.S.Kumar-AA-102
Comment	
Acquisition Date	5/15/2015 11:21:50 AM
Operator	RUCHI
Instrument	microTOF-Q II 10330

Acquisition Parameter

Source Type	ESI	Ion Polarity	Positive
Focus	Active	Set Capillary	4500 V
Scan Begin	50 m/z	Set End Plate Offset	-500 V
Scan End	3000 m/z	Set Collision Cell RF	130.0 Vpp
		Set Nebulizer	1.2 Bar
		Set Dry Heater	200 °C
		Set Dry Gas	7.0 l/min
		Set Divert Valve	Waste



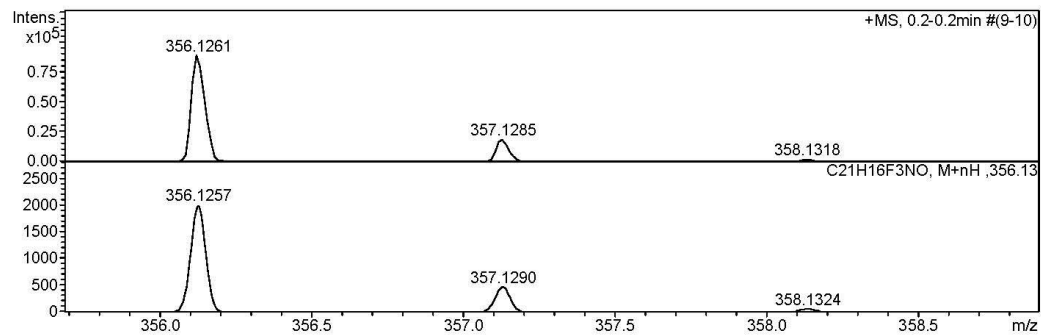
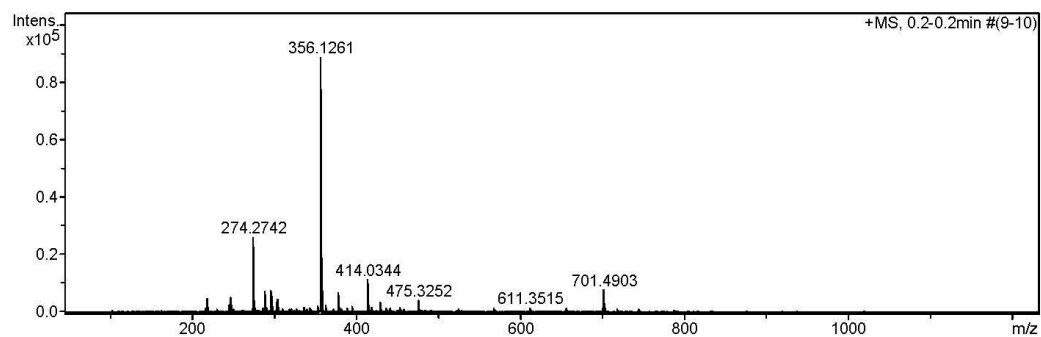
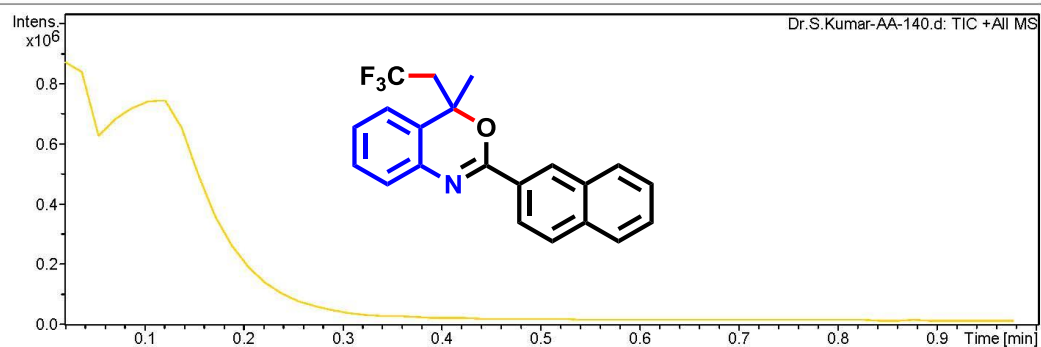
Display Report

Analysis Info

Analysis Name	D:\Data\user data\2015\April-2015\24-April-2015\Dr.S.Kumar-AA-140.d	Acquisition Date	4/24/2015 5:00:05 PM
Method	tune_low.m	Operator	RUCHI
Sample Name	AA-140	Instrument	micrOTOF-Q II 10330
Comment			

Acquisition Parameter

Source Type	ESI	Ion Polarity	Positive	Set Nebulizer	0.4 Bar
Focus	Not active	Set Capillary	4600 V	Set Dry Heater	180 °C
Scan Begin	50 m/z	Set End Plate Offset	-500 V	Set Dry Gas	4.0 l/min
Scan End	3000 m/z	Set Collision Cell RF	130.0 Vpp	Set Divert Valve	Waste



Display Report

Analysis Info

Analysis Name D:\Data\user data\2015\MAY-2015\15-MAY-2015\Dr.S.Kumar-AA-97_1-A,2_01_2508.d
Method HRLCMS-20 Sept.m
Sample Name Dr.S.Kumar-AA-97
Comment

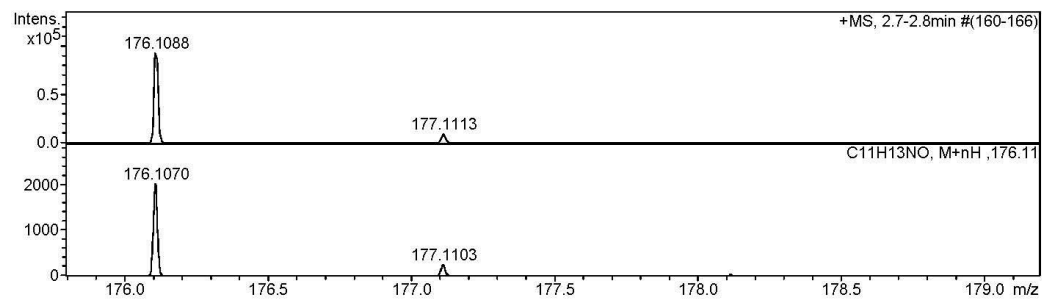
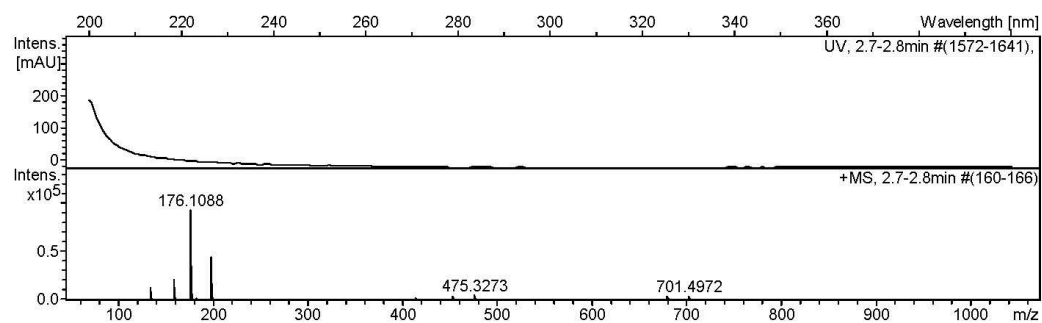
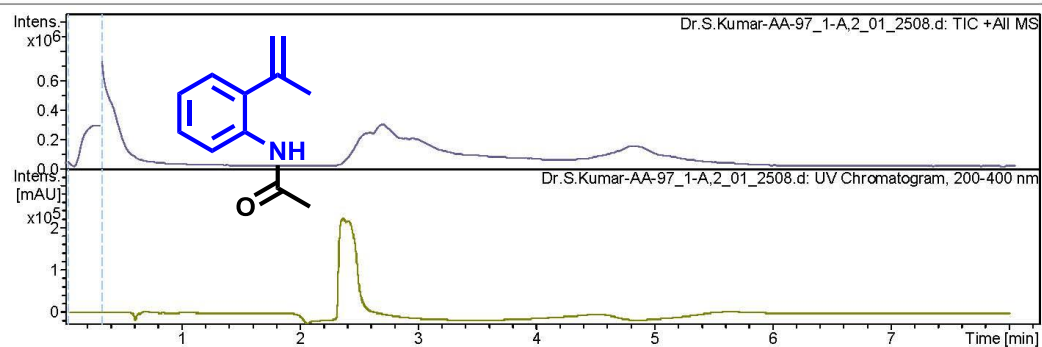
Acquisition Date 5/15/2015 11:12:41 AM

Operator RUCHI

Instrument microTOF-Q II 10330

Acquisition Parameter

Source Type	ESI	Ion Polarity	Positive	Set Nebulizer	1.2 Bar
Focus	Active	Set Capillary	4500 V	Set Dry Heater	200 °C
Scan Begin	50 m/z	Set End Plate Offset	-500 V	Set Dry Gas	7.0 l/min
Scan End	3000 m/z	Set Collision Cell RF	130.0 Vpp	Set Divert Valve	Waste



Display Report

Analysis Info

Analysis Name D:\Data\user data\2015\April-2015\22-April-2015\Dr.S.Kumar-AA-144.d
Method tune_low.m
Sample Name AA-144
Comment

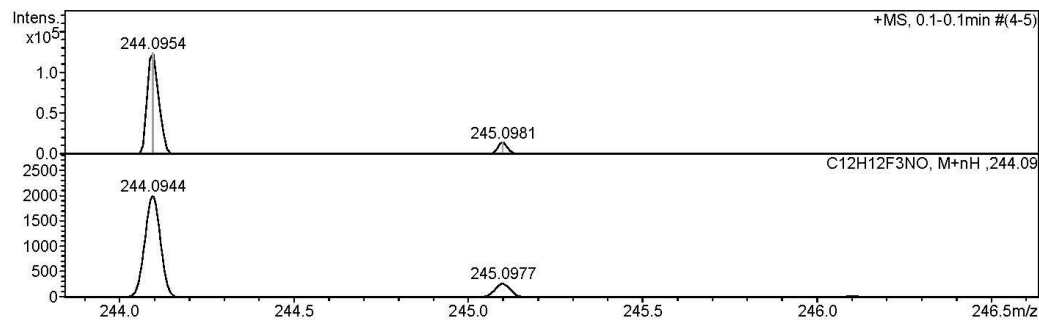
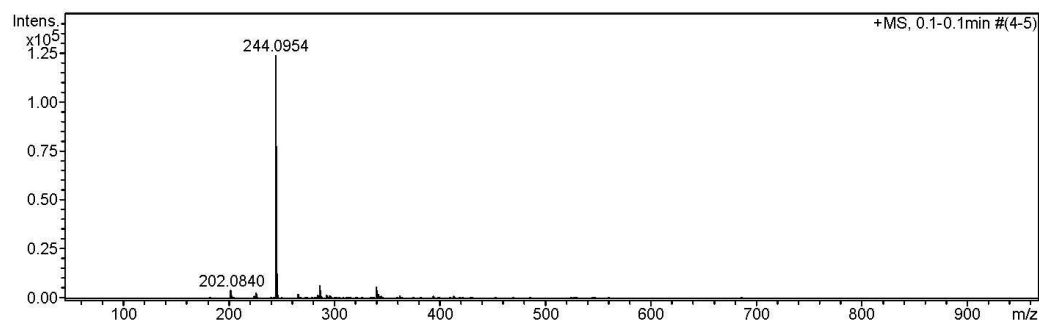
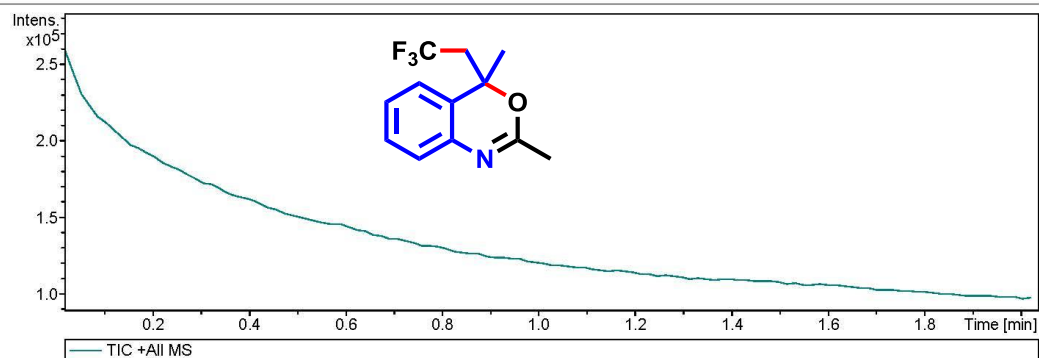
Acquisition Date 4/23/2015 4:21:58 PM

Operator RUCHI

Instrument micrOTOF-Q II 10330

Acquisition Parameter

Source Type	ESI	Ion Polarity	Positive	Set Nebulizer	0.4 Bar
Focus	Not active	Set Capillary	4600 V	Set Dry Heater	180 °C
Scan Begin	50 m/z	Set End Plate Offset	-500 V	Set Dry Gas	4.0 l/min
Scan End	3000 m/z	Set Collision Cell RF	330.0 Vpp	Set Divert Valve	Waste



Display Report

Analysis Info

Analysis Name D:\Data\user data\2015\April-2015\22-April-2015\Dr.S.Kumar-AA-141-1.d
Method tune_low.m
Sample Name AA-141-1
Comment

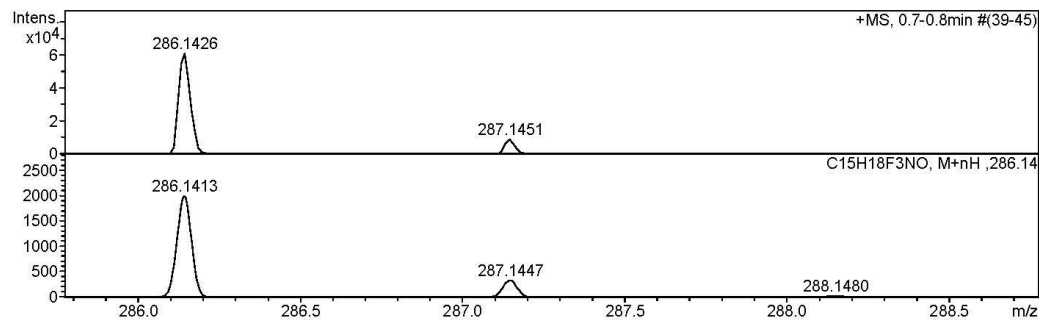
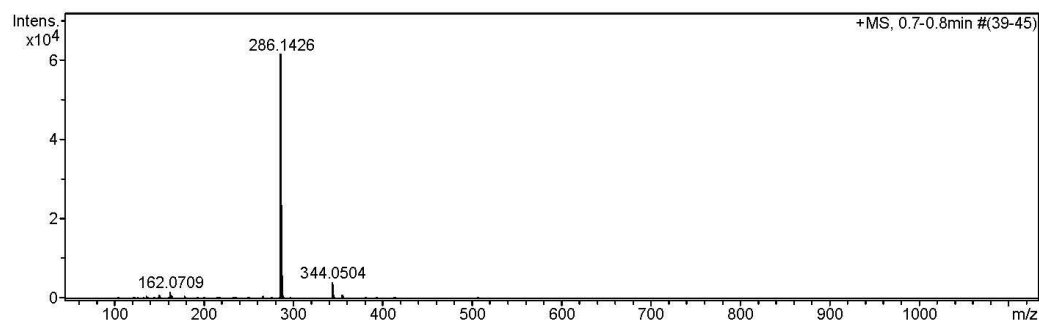
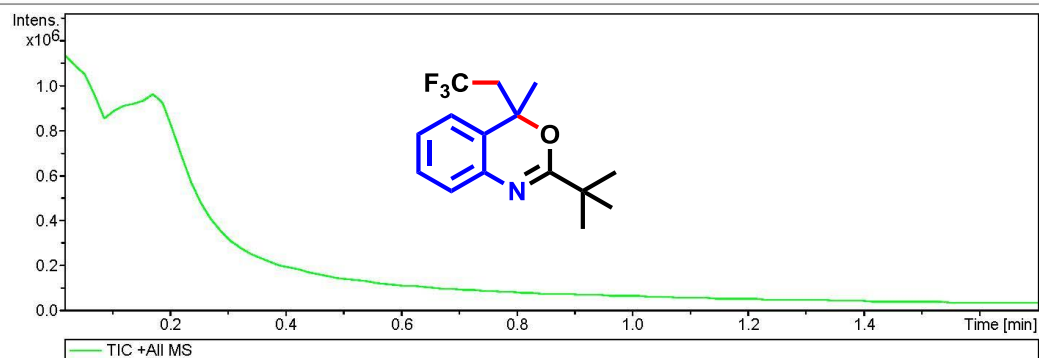
Acquisition Date 4/23/2015 4:10:21 PM

Operator RUCHI

Instrument micrOTOF-Q II 10330

Acquisition Parameter

Source Type	ESI	Ion Polarity	Positive	Set Nebulizer	0.4 Bar
Focus	Not active	Set Capillary	4600 V	Set Dry Heater	180 °C
Scan Begin	50 m/z	Set End Plate Offset	-500 V	Set Dry Gas	4.0 l/min
Scan End	3000 m/z	Set Collision Cell RF	130.0 Vpp	Set Divert Valve	Waste



Display Report

Analysis Info

Analysis Name D:\Data\user data\2015\MAY-2015\14-MAY-2015\Dr.S.Kumar-SJ-259_1-B_6_01_2497.d
Method HRLCMS-20 Sept.m
Sample Name Dr.S.Kumar-SJ-259
Comment

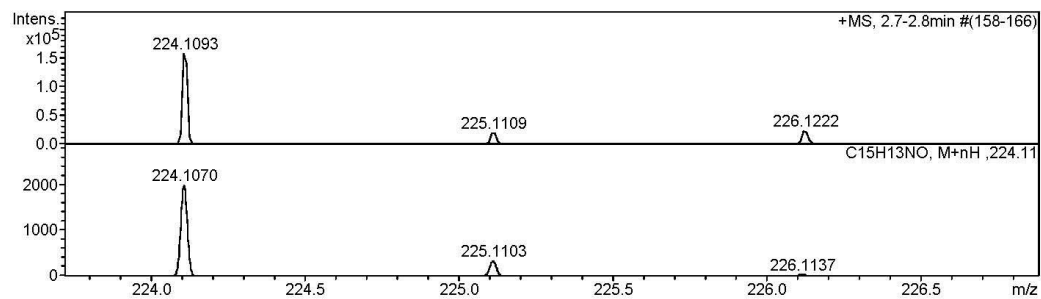
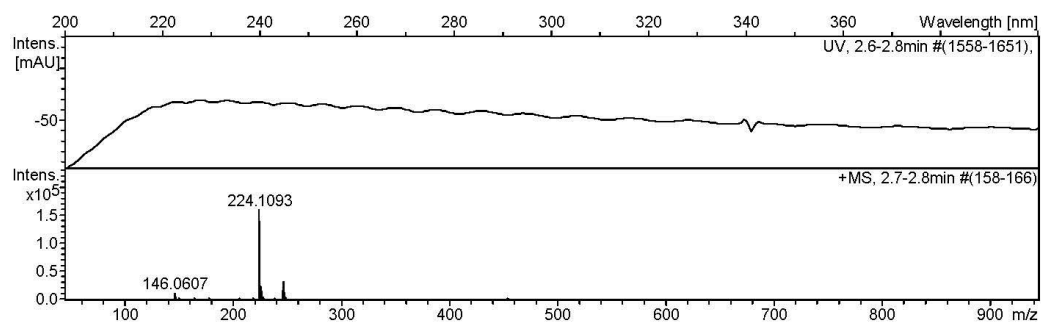
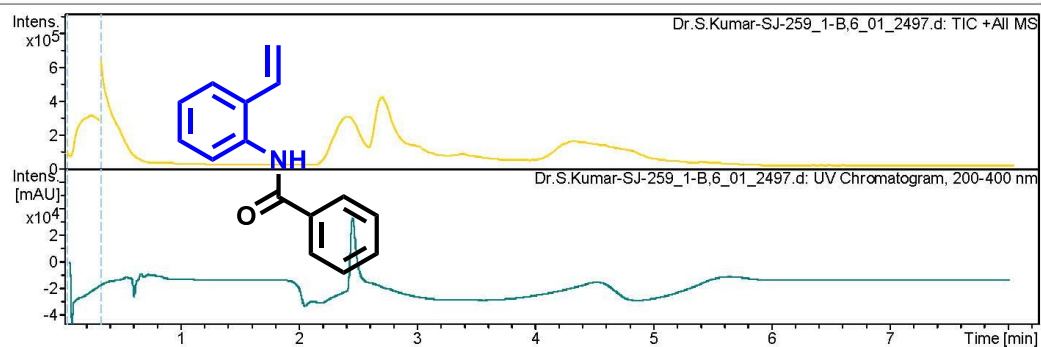
Acquisition Date 5/14/2015 1:32:07 PM

Operator RUCHI

Instrument microTOF-Q II 10330

Acquisition Parameter

Source Type	ESI	Ion Polarity	Positive	Set Nebulizer	1.2 Bar
Focus	Active	Set Capillary	4500 V	Set Dry Heater	200 °C
Scan Begin	50 m/z	Set End Plate Offset	-500 V	Set Dry Gas	7.0 l/min
Scan End	3000 m/z	Set Collision Cell RF	130.0 Vpp	Set Divert Valve	Waste



Display Report

Analysis Info

Analysis Name D:\Data\user data\2015\April-2015\22-April-2015\Dr.S.Kumar-AA-142.d
Method tune_low.m
Sample Name AA-142
Comment

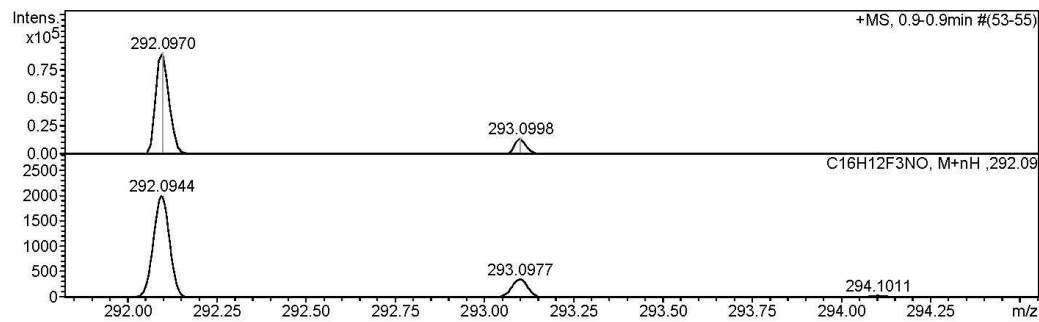
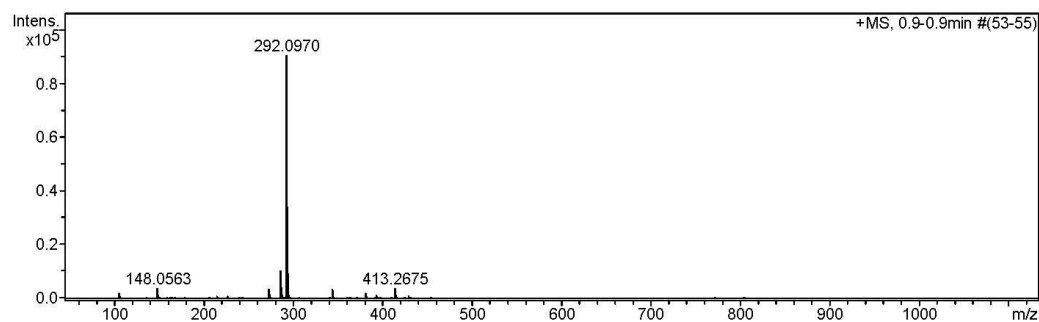
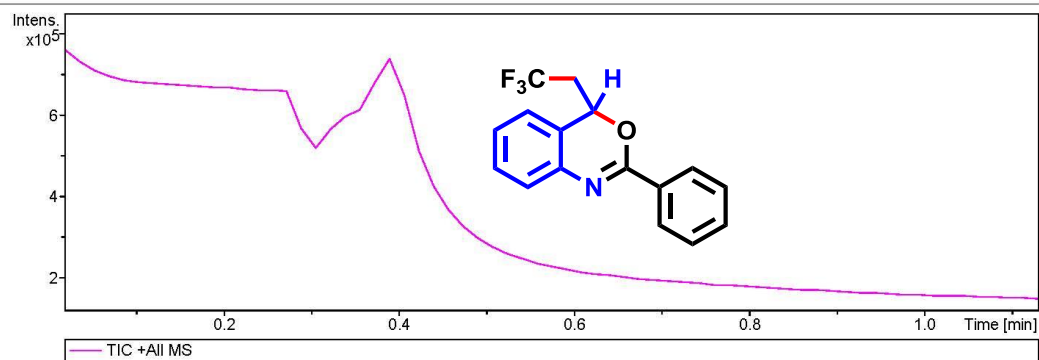
Acquisition Date 4/23/2015 4:13:32 PM

Operator RUCHI

Instrument micrOTOF-Q II 10330

Acquisition Parameter

Source Type	ESI	Ion Polarity	Positive	Set Nebulizer	0.4 Bar
Focus	Not active	Set Capillary	4600 V	Set Dry Heater	180 °C
Scan Begin	50 m/z	Set End Plate Offset	-500 V	Set Dry Gas	4.0 l/min
Scan End	3000 m/z	Set Collision Cell RF	130.0 Vpp	Set Divert Valve	Waste



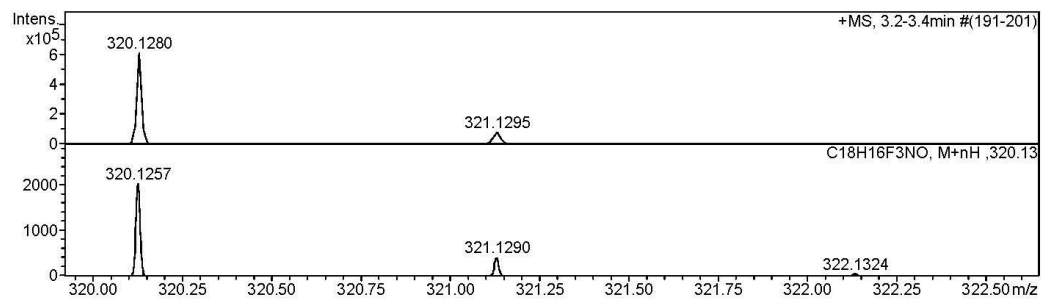
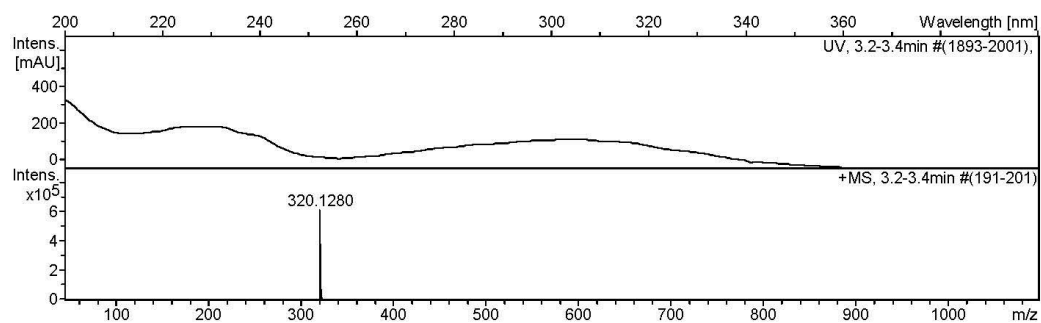
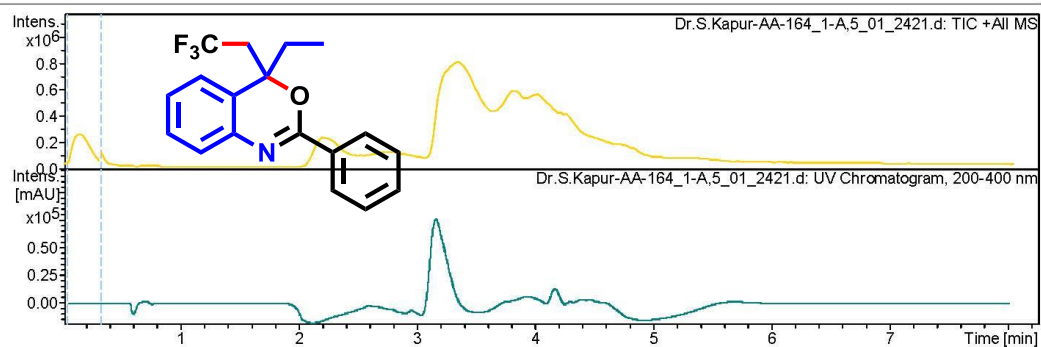
Display Report

Analysis Info

Analysis Name	D:\Data\user data\2015\MAY-2015\08-MAY-2015\Dr.S.Kapur-AA-164_1-A,5_01_2421.d
Method	HRLCMS-20 Sept.m
Sample Name	Dr.S.Kapur-AA-164
Comment	
Acquisition Date	5/8/2015 2:40:55 PM
Operator	RUCHI
Instrument	micrOTOF-Q II 10330

Acquisition Parameter

Source Type	ESI	Ion Polarity	Positive
Focus	Active	Set Capillary	4500 V
Scan Begin	50 m/z	Set End Plate Offset	-500 V
Scan End	3000 m/z	Set Collision Cell RF	130.0 Vpp
		Set Nebulizer	1.2 Bar
		Set Dry Heater	200 °C
		Set Dry Gas	7.0 l/min
		Set Divert Valve	Waste



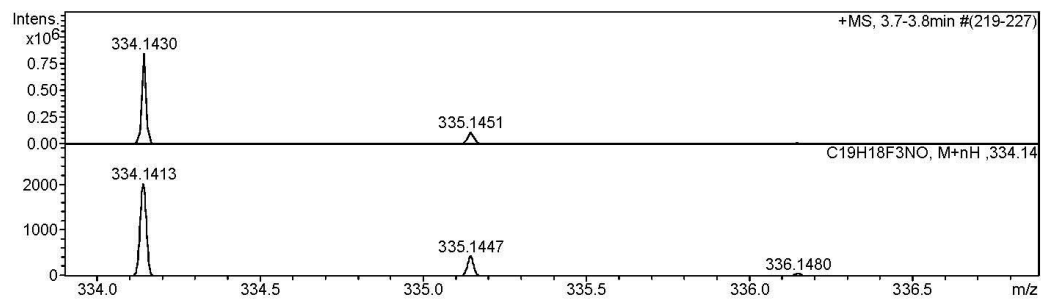
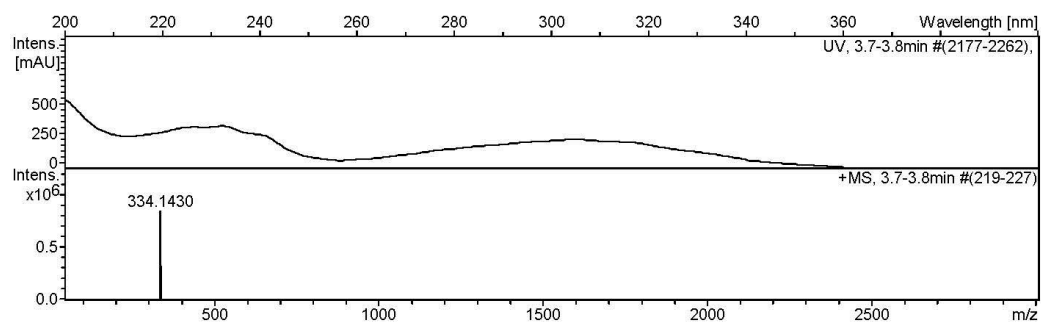
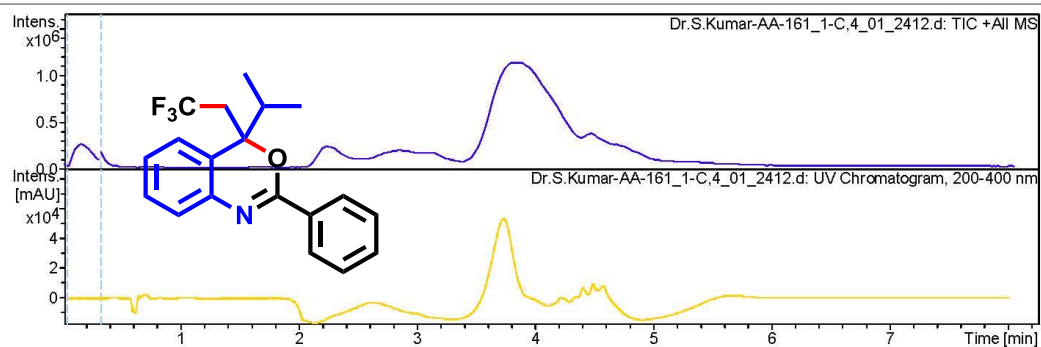
Display Report

Analysis Info

Analysis Name	D:\Data\user data\2015\MAY-2015\07-MAY-2015\Dr.S.Kumar-AA-161_1-C,4_01_2412.d
Method	HRLCMS-20 Sept.m
Sample Name	Dr.S.Kumar-AA-161
Comment	
Acquisition Date	5/7/2015 3:11:45 PM
Operator	RUCHI
Instrument	microTOF-Q II 10330

Acquisition Parameter

Source Type	ESI	Ion Polarity	Positive
Focus	Active	Set Capillary	4500 V
Scan Begin	50 m/z	Set End Plate Offset	-500 V
Scan End	3000 m/z	Set Collision Cell RF	130.0 Vpp
		Set Nebulizer	1.2 Bar
		Set Dry Heater	200 °C
		Set Dry Gas	7.0 l/min
		Set Divert Valve	Waste



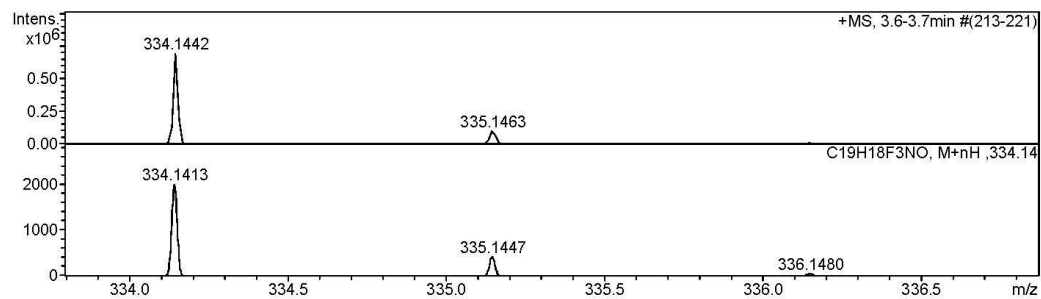
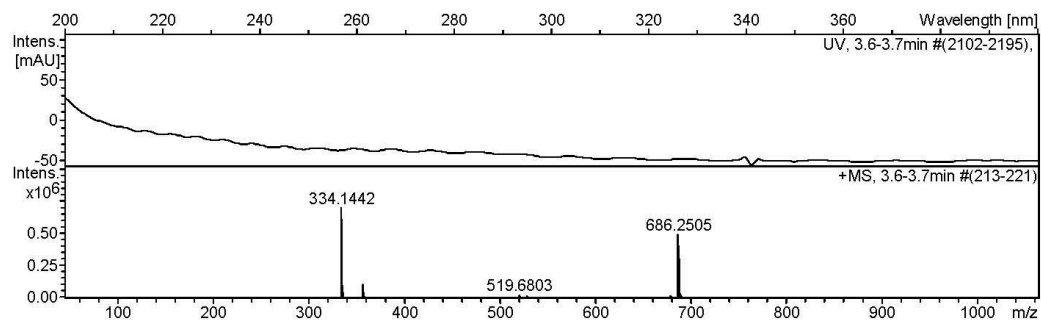
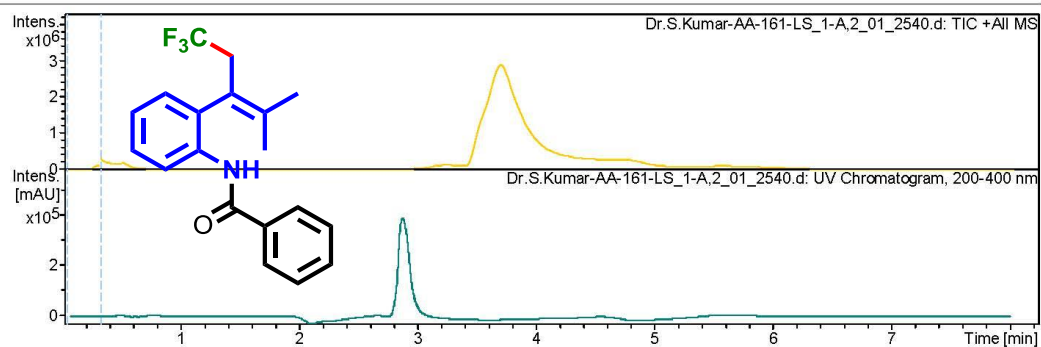
Display Report

Analysis Info

Analysis Name	D:\Data\user data\2015\MAY-2015\19-MAY-2015\Dr.S.Kumar-AA-161-LS_1-A,2_01_2540.d
Method	HRLCMS-20 Sept.m
Sample Name	Dr.S.Kumar-AA-161-LS
Comment	
Acquisition Date	5/19/2015 11:21:22 AM
Operator	RUCHI
Instrument	microTOF-Q II 10330

Acquisition Parameter

Source Type	ESI	Ion Polarity	Positive
Focus	Active	Set Capillary	4500 V
Scan Begin	50 m/z	Set End Plate Offset	-500 V
Scan End	3000 m/z	Set Collision Cell RF	130.0 Vpp
		Set Nebulizer	1.2 Bar
		Set Dry Heater	200 °C
		Set Dry Gas	7.0 l/min
		Set Divert Valve	Waste



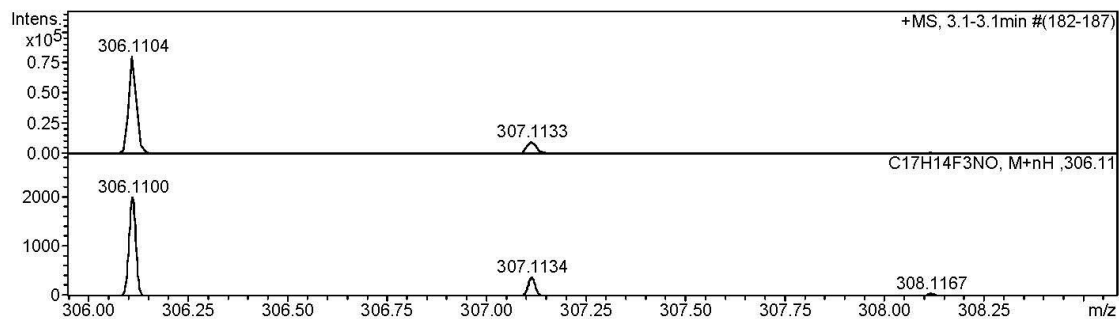
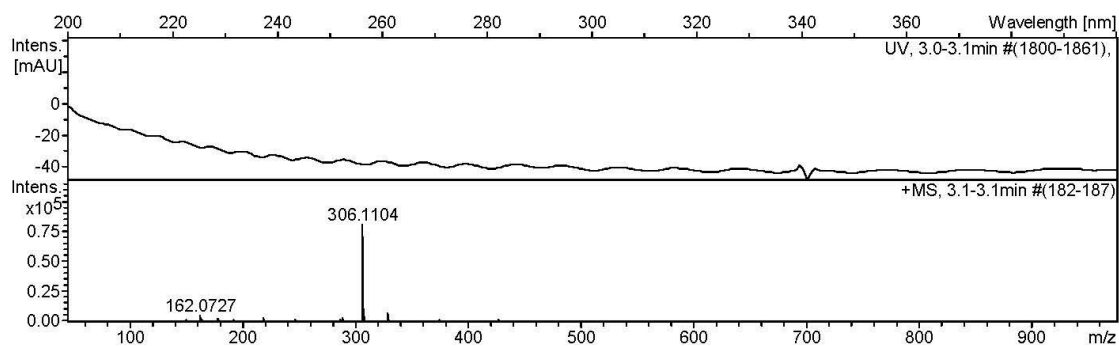
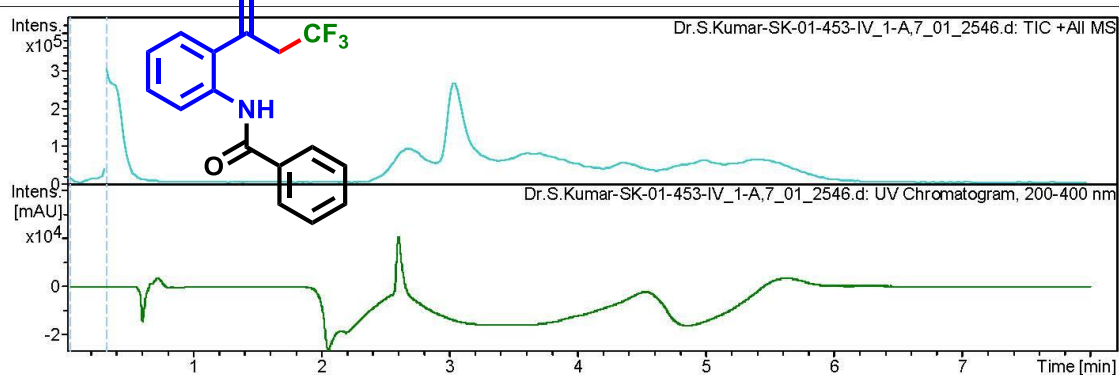
Display Report

Analysis Info

Analysis Name	D:\Data\user data\2015\MAY-2015\19-MAY-2015\Dr.S.Kumar-SK-01-453-IV_1-A,7_01_2546.d	Acquisition Date	5/19/2015 12:22:32 PM
Method	HRLCMS-20 Sept.m	Operator	RUCHI
Sample Name	Dr.S.Kumar-SK-01-453-IV	Instrument	microTOF-Q II 10330
Comment			

Acquisition Parameter

Source Type	ESI	Ion Polarity	Positive	Set Nebulizer	1.2 Bar
Focus	Active	Set Capillary	4500 V	Set Dry Heater	200 °C
Scan Begin	50 m/z	Set End Plate Offset	-500 V	Set Dry Gas	7.0 l/min
Scan End	3000 m/z	Set Collision Cell RF	130.0 Vpp	Set Divert Valve	Waste



Display Report

Analysis Info

Analysis Name D:\Data\user data\2015\MAY-2015\13-MAY-2015\Dr.S.Kumar-SK-01-443-VE-A.d
Method tune_low_neg.m
Sample Name SK-01-443-VE-A
Comment

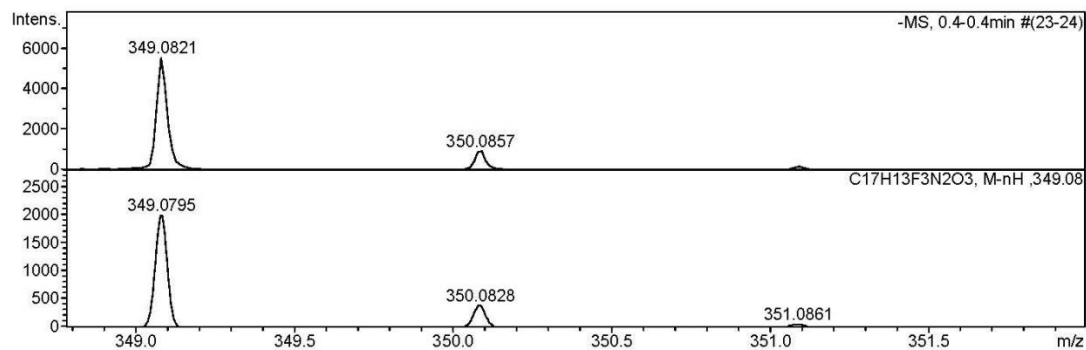
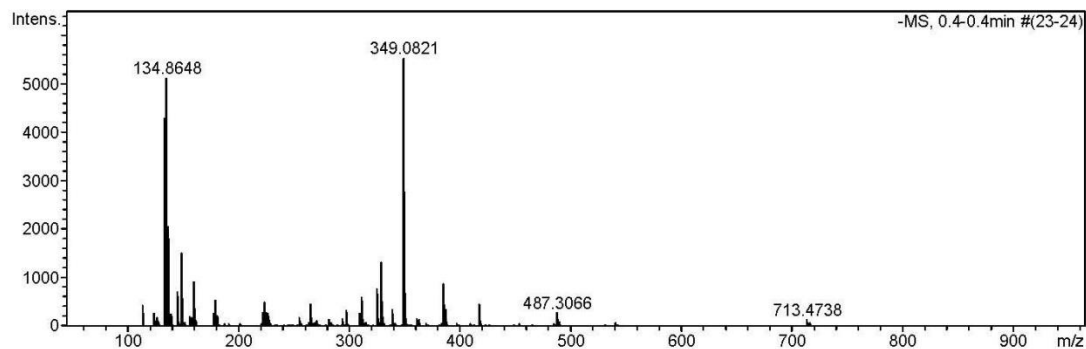
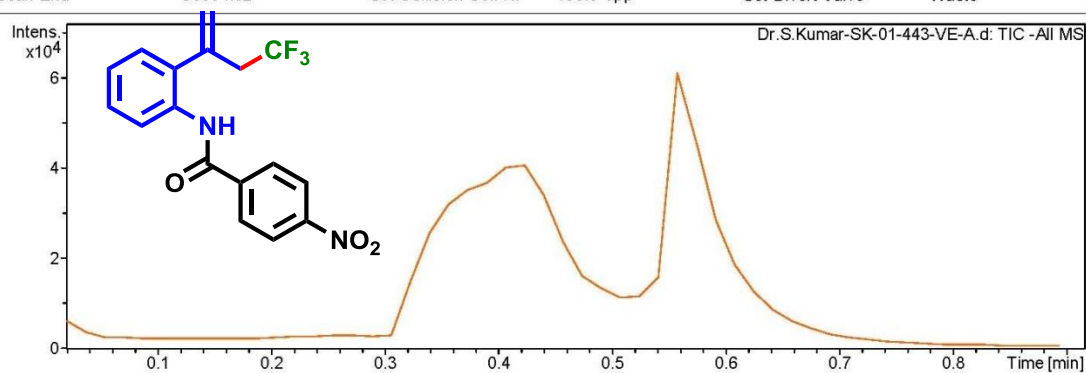
Acquisition Date 5/13/2015 4:59:00 PM

Operator RUCHI

Instrument micrOTOF-Q II 10330

Acquisition Parameter

Source Type	ESI	Ion Polarity	Negative	Set Nebulizer	0.4 Bar
Focus	Not active	Set Capillary	2500 V	Set Dry Heater	180 °C
Scan Begin	50 m/z	Set End Plate Offset	-500 V	Set Dry Gas	4.0 l/min
Scan End	3000 m/z	Set Collision Cell RF	130.0 Vpp	Set Divert Valve	Waste



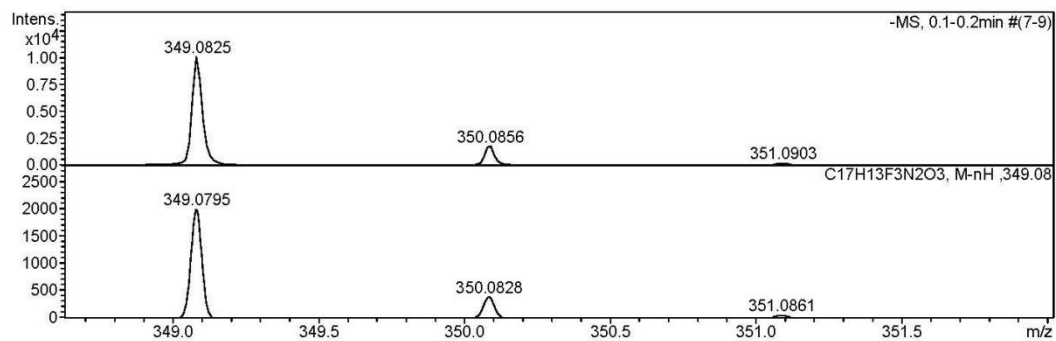
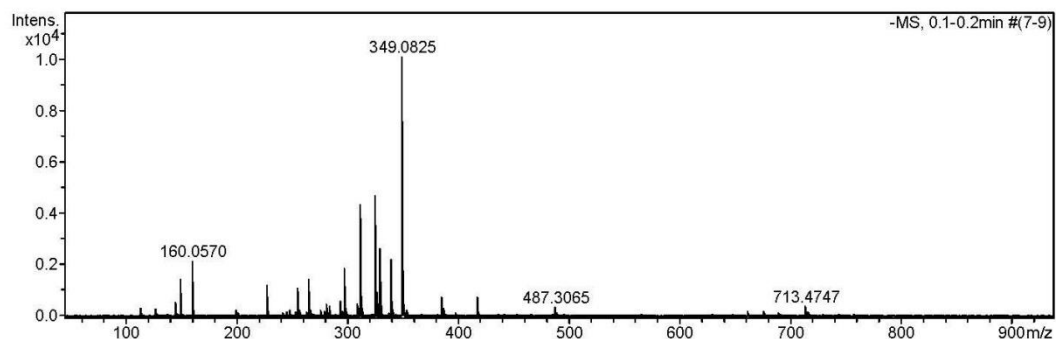
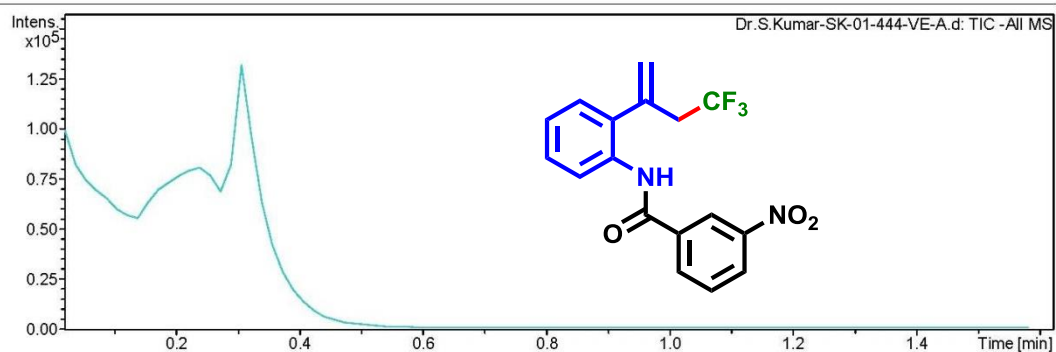
Display Report

Analysis Info

Analysis Name	D:\Data\user data\2015\MAY-2015\13-MAY-2015\Dr.S.Kumar-SK-01-444-VE-A.d	Acquisition Date	5/13/2015 5:00:50 PM
Method	tune_low_neg.m	Operator	RUCHI
Sample Name	SK-01-444-VE-A	Instrument	micrOTOF-Q II 10330
Comment			

Acquisition Parameter

Source Type	ESI	Ion Polarity	Negative	Set Nebulizer	0.4 Bar
Focus	Not active	Set Capillary	2500 V	Set Dry Heater	180 °C
Scan Begin	50 m/z	Set End Plate Offset	-500 V	Set Dry Gas	4.0 l/min
Scan End	3000 m/z	Set Collision Cell RF	130.0 Vpp	Set Divert Valve	Waste



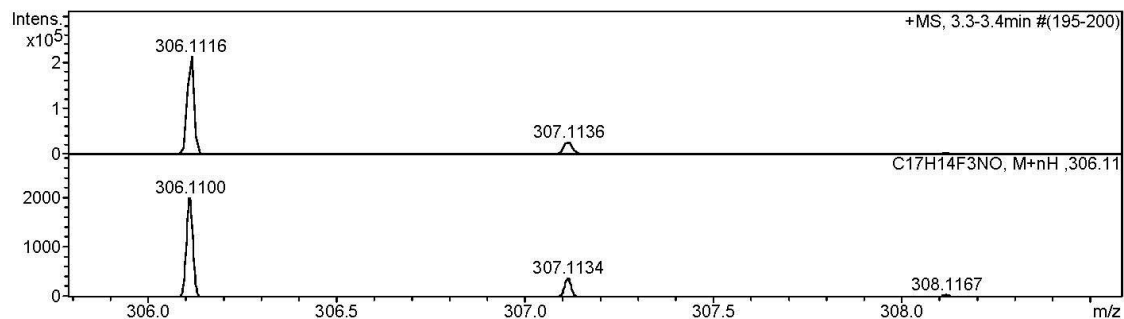
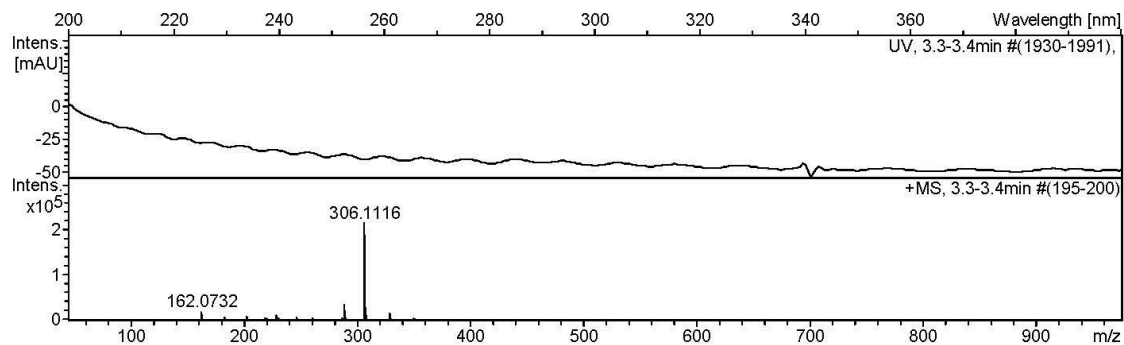
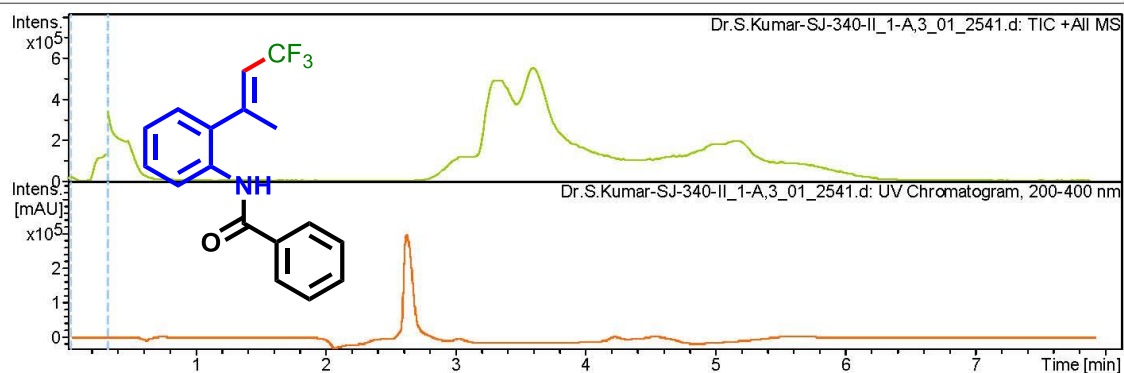
Display Report

Analysis Info

Analysis Name	D:\Data\user data\2015\MAY-2015\19-MAY-2015\Dr.S.Kumar-SJ-340-II_1-A,3_01_2541.d	Acquisition Date	5/19/2015 11:30:36 AM
Method	HRLCMS-20 Sept.m	Operator	RUCHI
Sample Name	Dr.S.Kumar-SJ-340-II	Instrument	micrOTOF-Q II 10330
Comment			

Acquisition Parameter

Source Type	ESI	Ion Polarity	Positive	Set Nebulizer	1.2 Bar
Focus	Active	Set Capillary	4500 V	Set Dry Heater	200 °C
Scan Begin	50 m/z	Set End Plate Offset	-500 V	Set Dry Gas	7.0 l/min
Scan End	3000 m/z	Set Collision Cell RF	130.0 Vpp	Set Divert Valve	Waste



Display Report

Analysis Info

Analysis Name D:\Data\user data\2014\SEPT\16 SEPT\Dr.S.Kumar-SJ-231-III-VE.d
 Method tune_low.m
 Sample Name SJ-231-III-VE
 Comment

Acquisition Date 9/16/2014 3:06:06 PM

Operator RUCHI

Instrument microTOF-Q II 10330

Acquisition Parameter

Source Type	ESI	Ion Polarity	Negative	Set Nebulizer	0.4 Bar
Focus	Not active	Set Capillary	2500 V	Set Dry Heater	180 °C
Scan Begin	50 m/z	Set End Plate Offset	-500 V	Set Dry Gas	4.0 l/min
Scan End	3000 m/z	Set Collision Cell RF	150.0 Vpp	Set Divert Valve	Waste

