

Supplemental Information

Mass Spectrometry Data

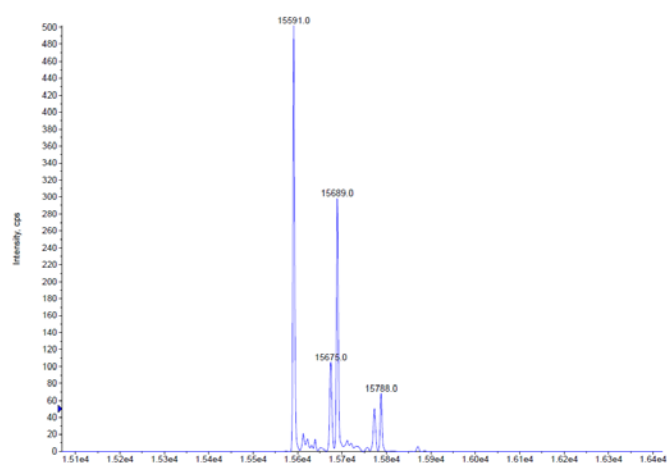


Figure SI 1. Deconvoluted mass spectrum indicating native SOD. $[M+K+H]^+ = 15591$

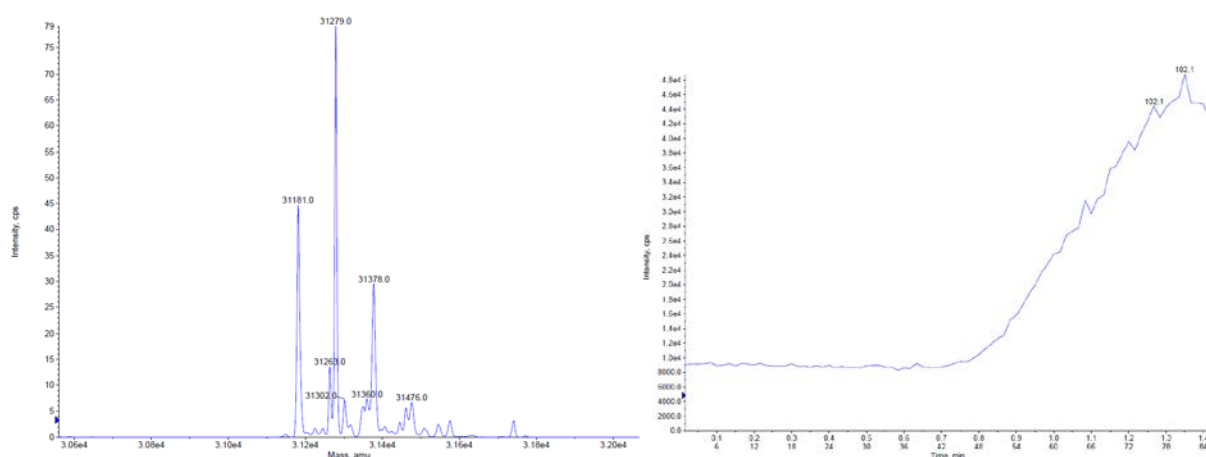


Figure SI 2. Deconvoluted mass spectrum indicating SOD-N₃ (left) and associated LC-MS chromatogram run by desalt column (right). $[M+4H]^+ = 31279$ (ionization cleaves the cross-linker C_{Ar}-N bond)

ATKAVCVLKGDGPVQGTIHFEAKGDTVVVTGSITGLTEGDHGFHVHQFGDNTQGCTSA GPHFNPLSKKHGGPKDEER
HVGDLGNVTADKNGVAIVDIVDPLISLSGEYSIIIGRTM VVHEKPDDLGRGGNEESTKTGNAGSRLACGVIGIAK

Figure SI 3. Peptide sequence for bovine SOD1 from uniprot.org (P00442 SODC_BOVIN).

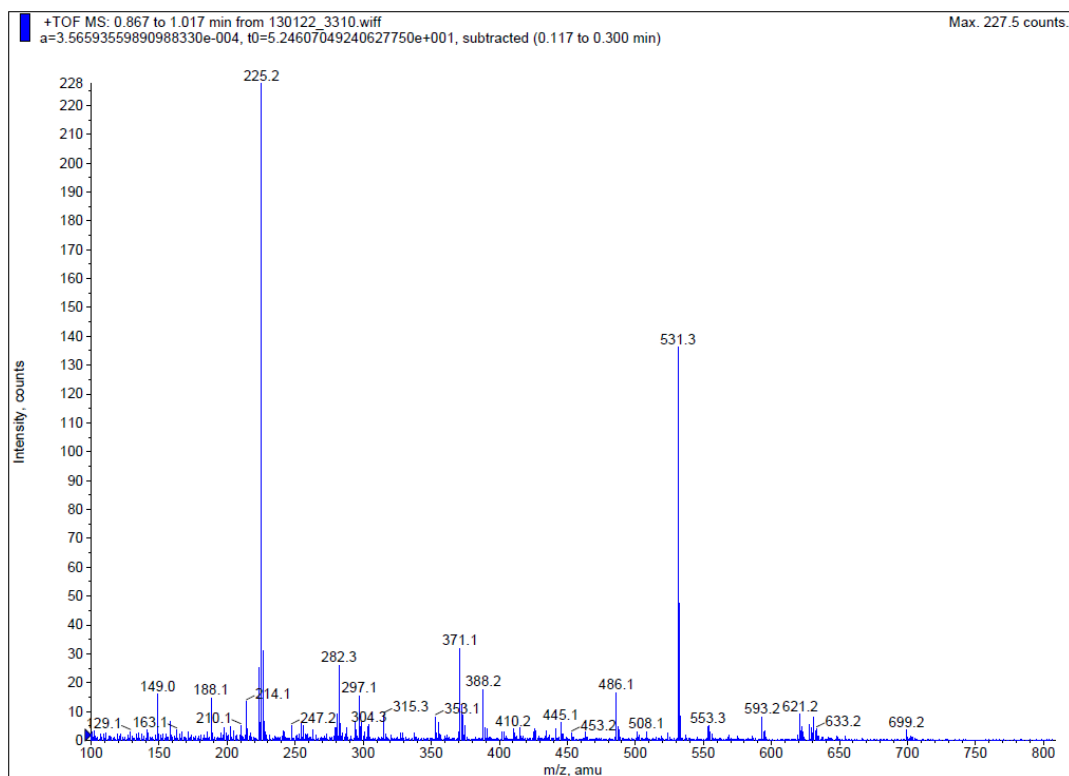


Figure SI 4. Evidence for two triazoles forming under the phase-directed copper-catalyzed azide-alkyne cycloaddition (PDCuAAC) conditions. Benzyl azide was reacted with alkyne **2** under the conditions of the PDCuAAC reaction. ESIMS calcd for $C_{32}H_{26}N_8O_4S$ $[M+3H]^+$: 621.2, found 621.2.