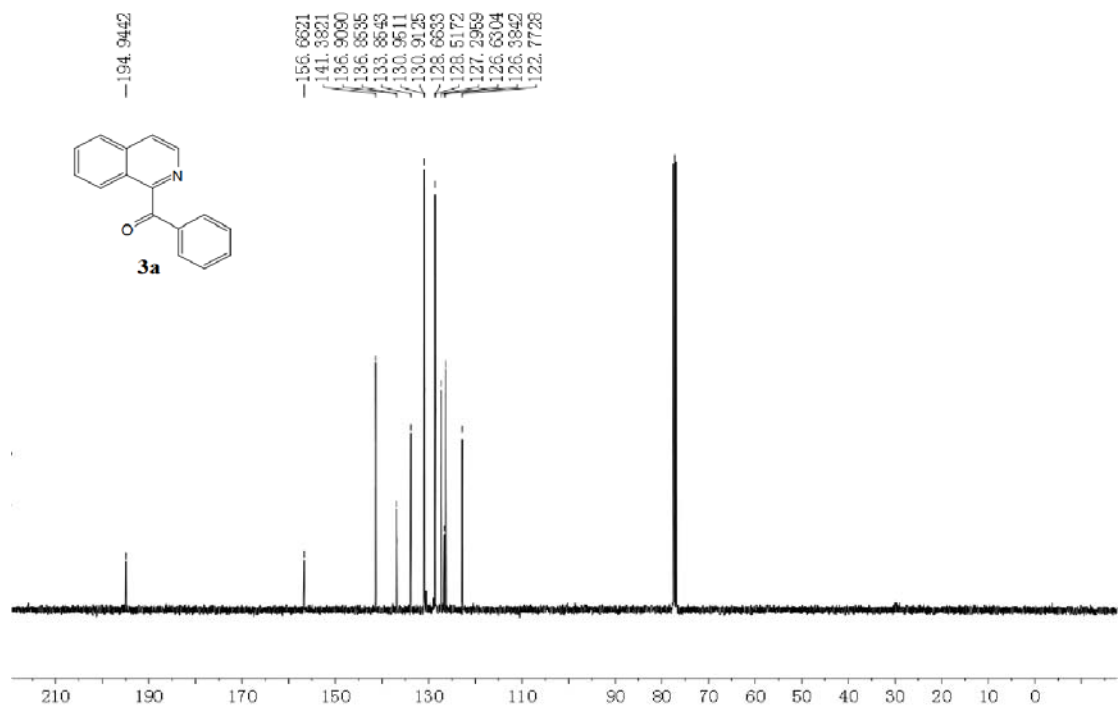
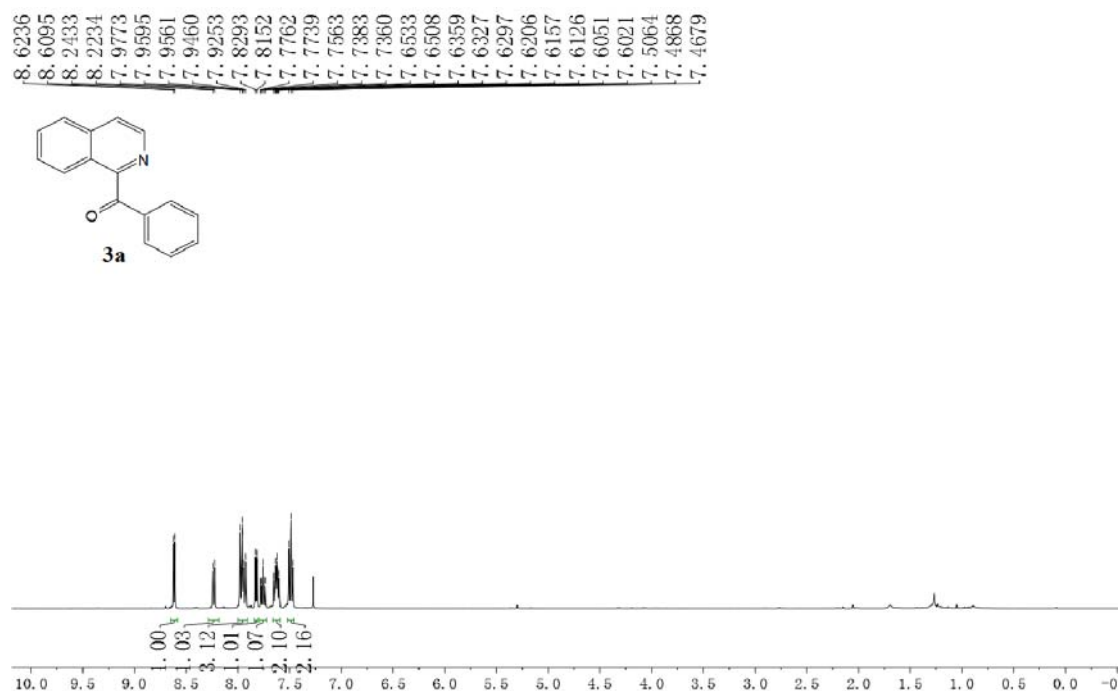
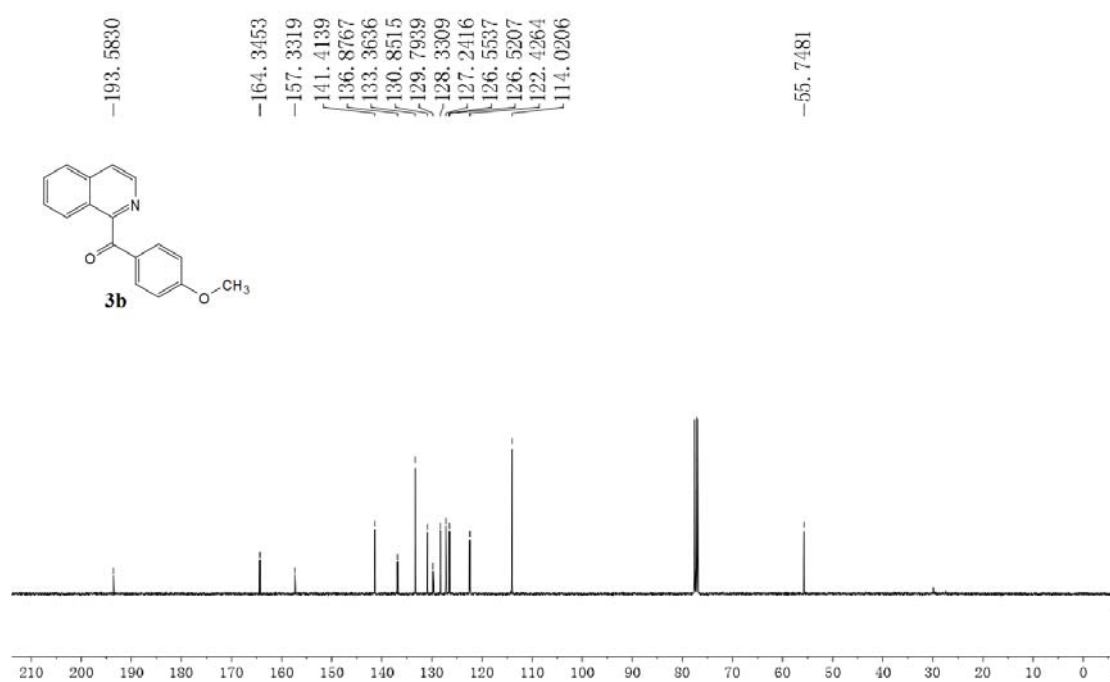
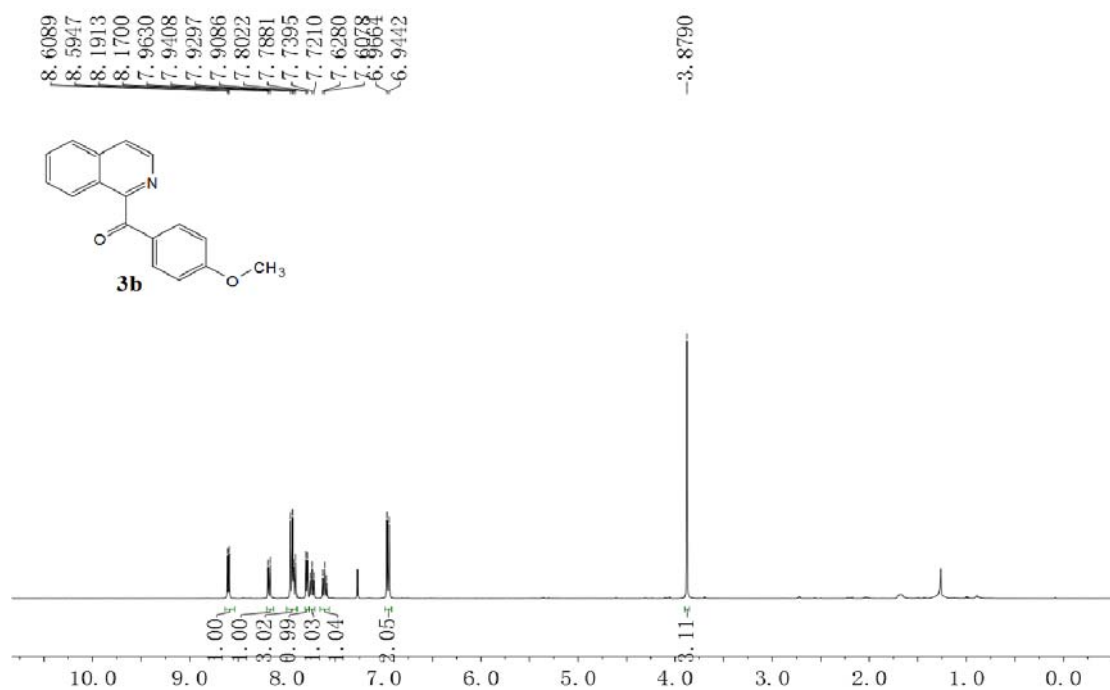
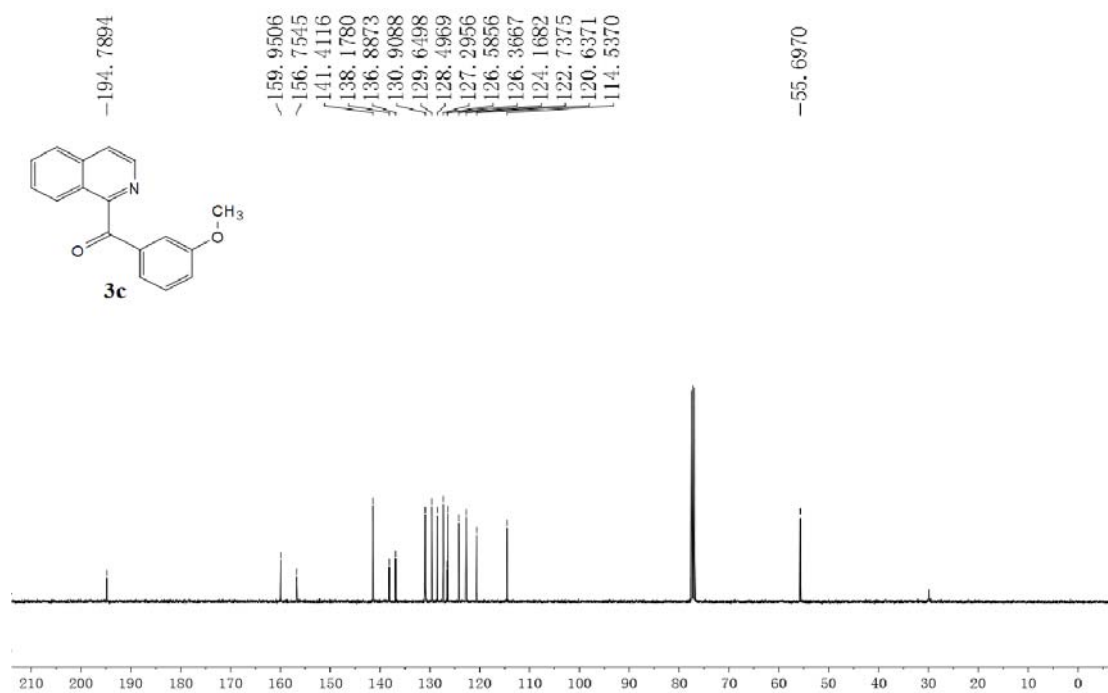
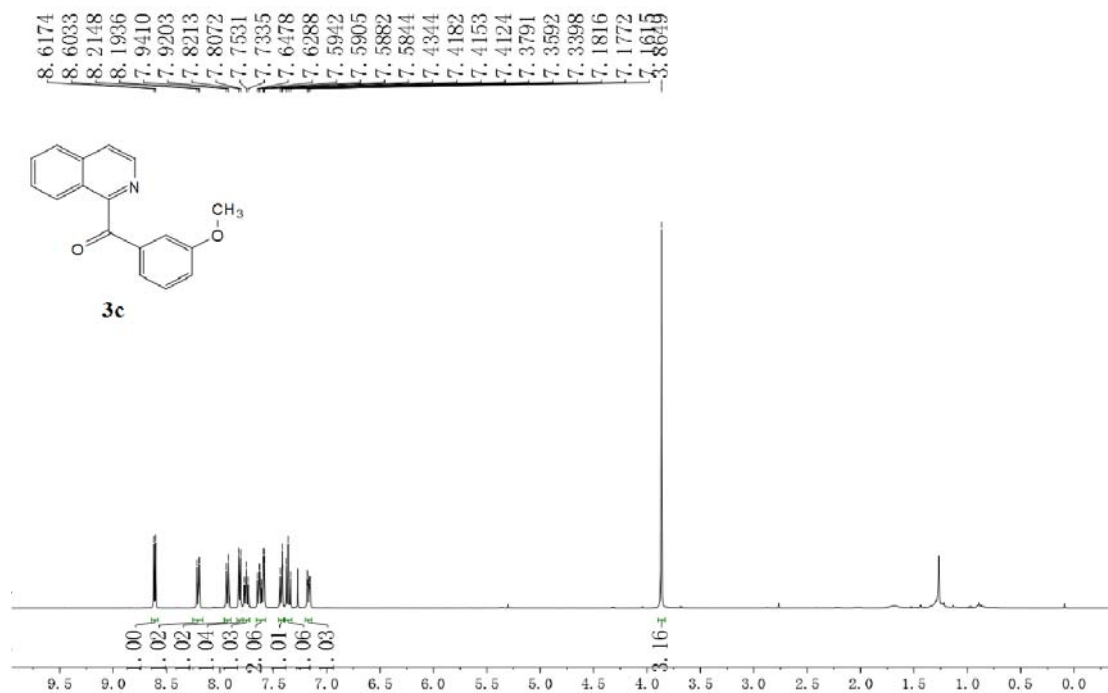
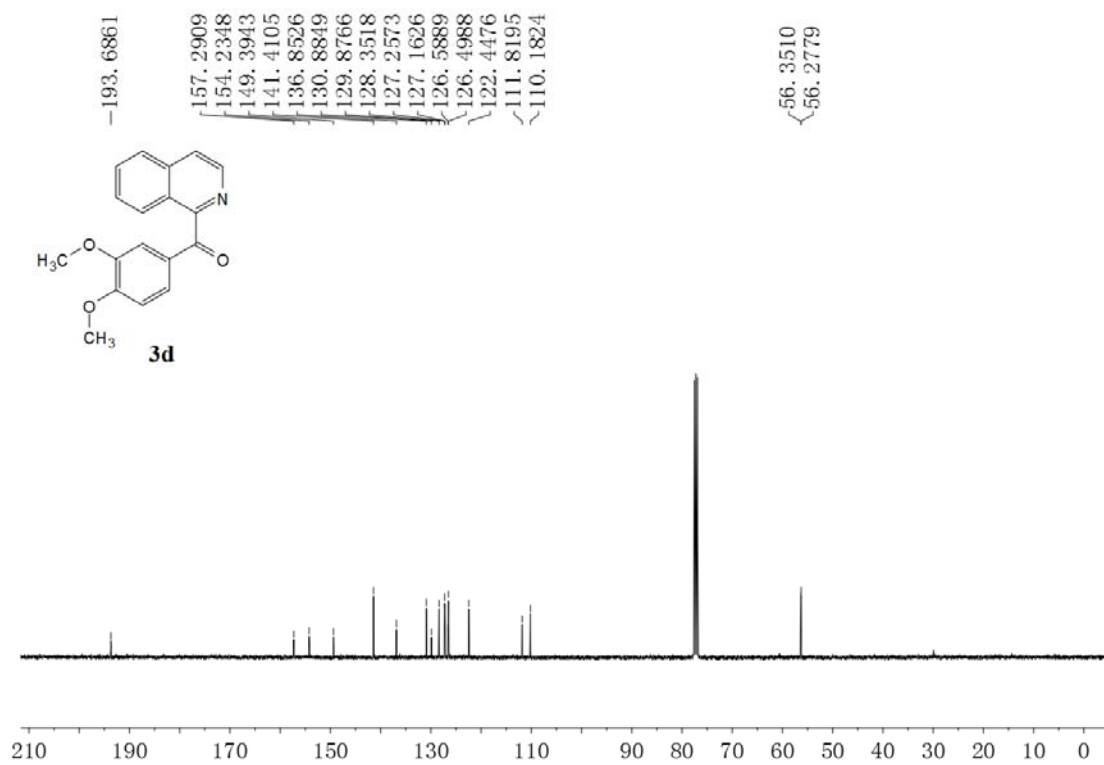
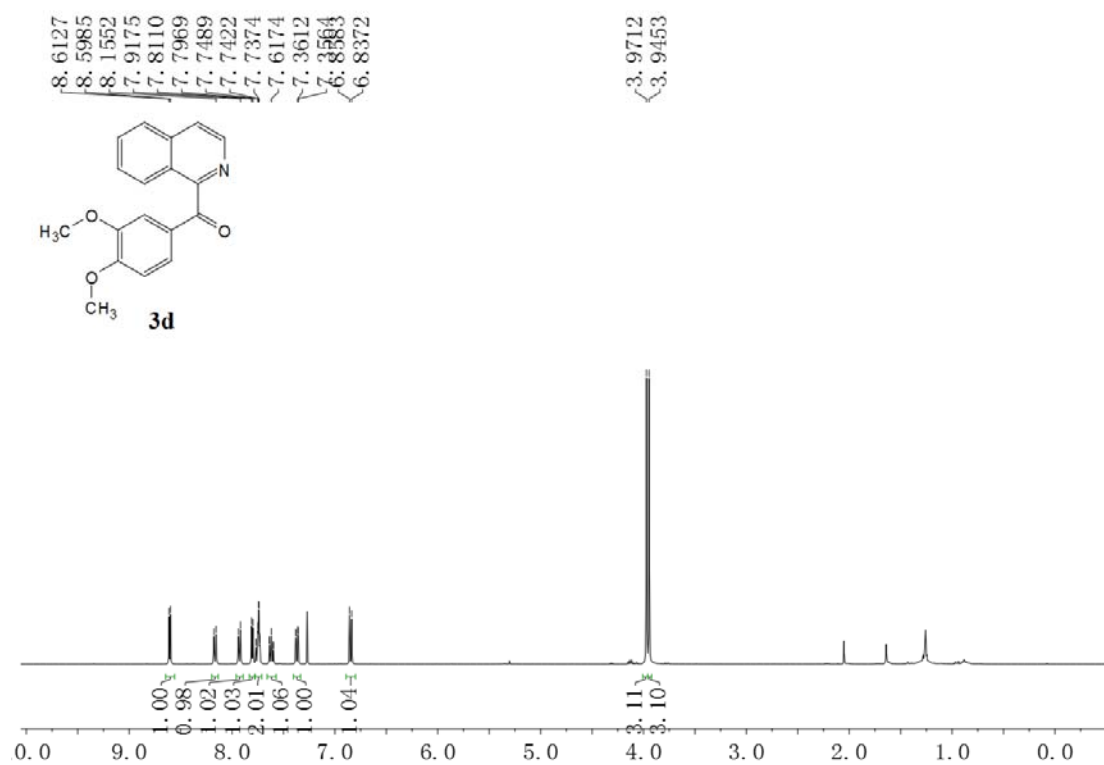


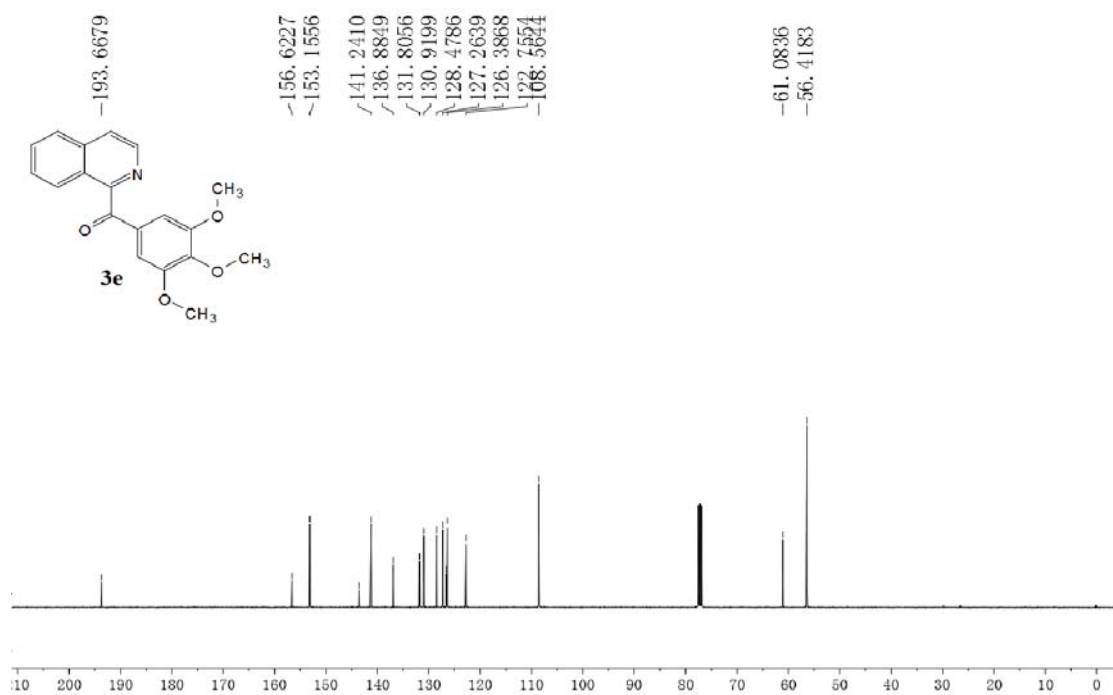
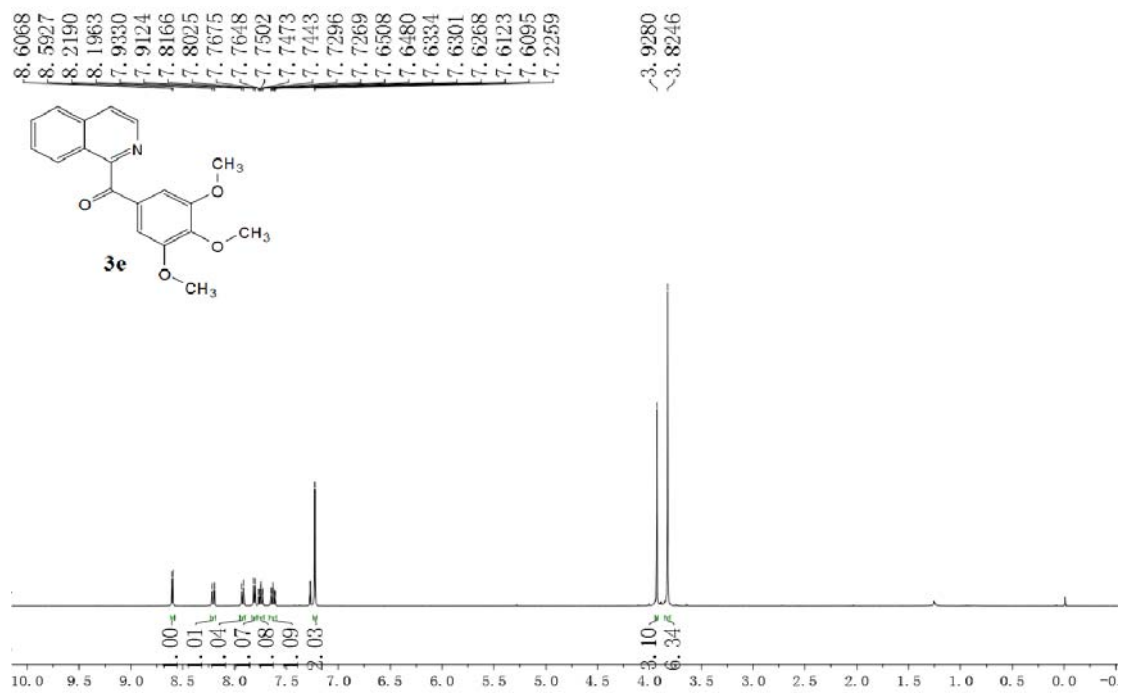
# <sup>1</sup>H and <sup>13</sup>C NMR spectra

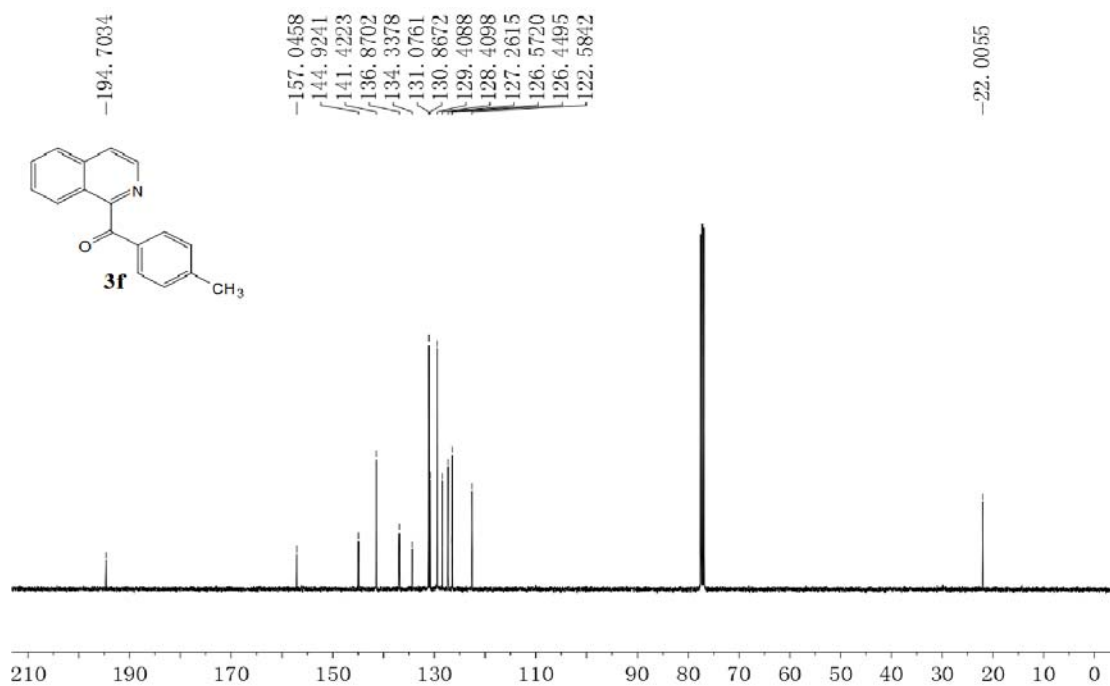
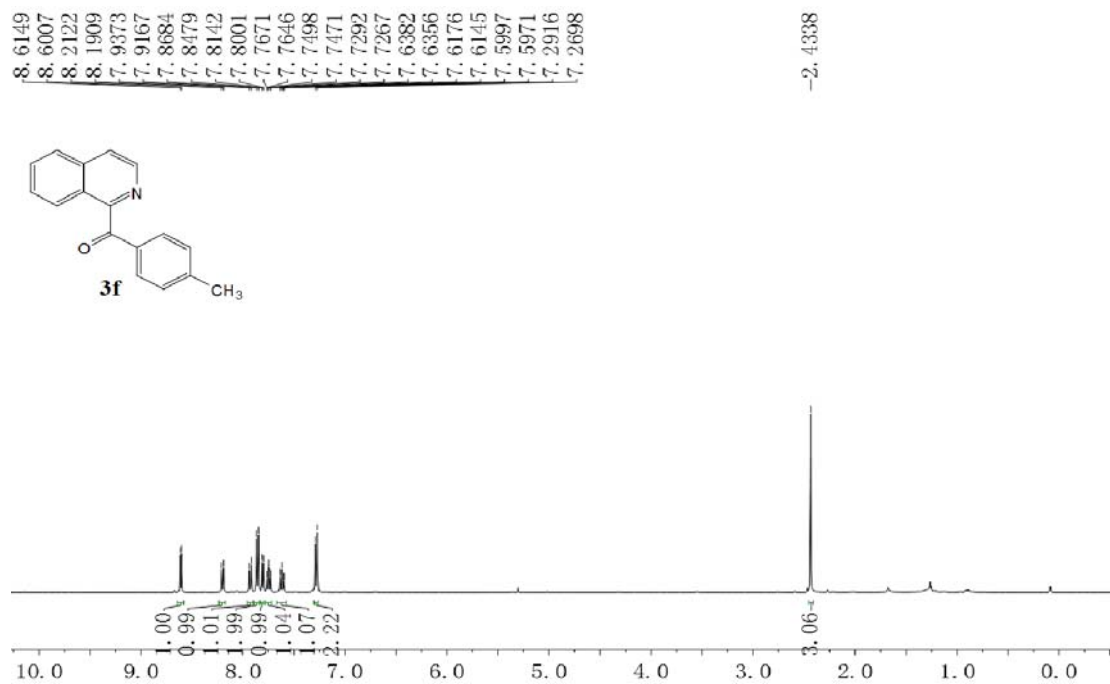


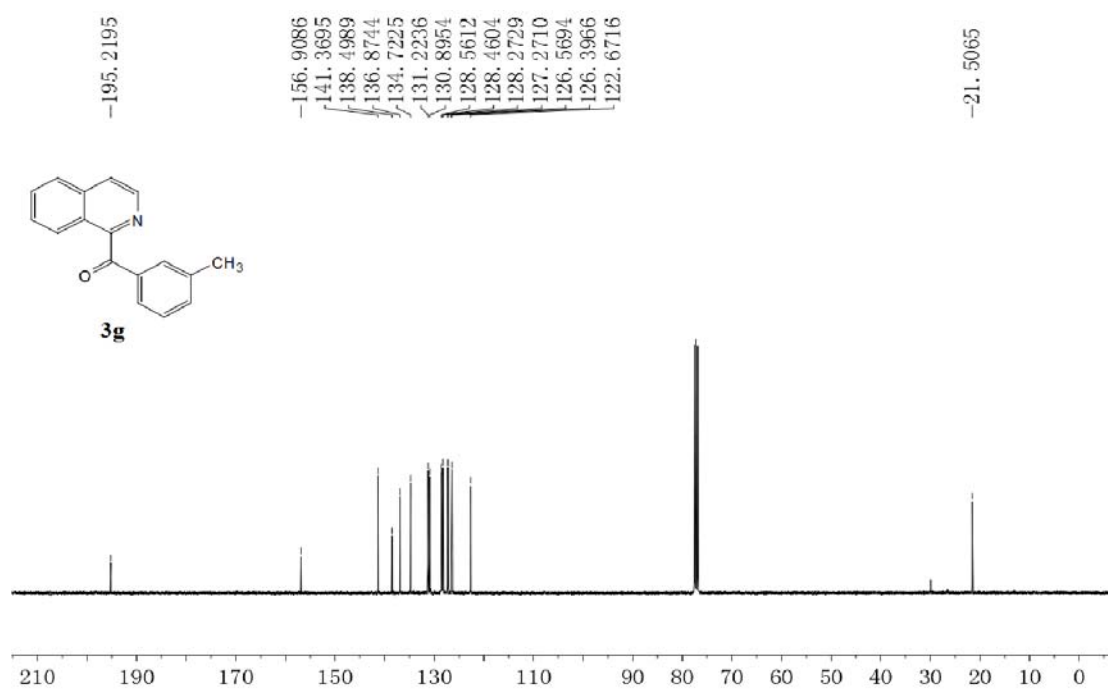
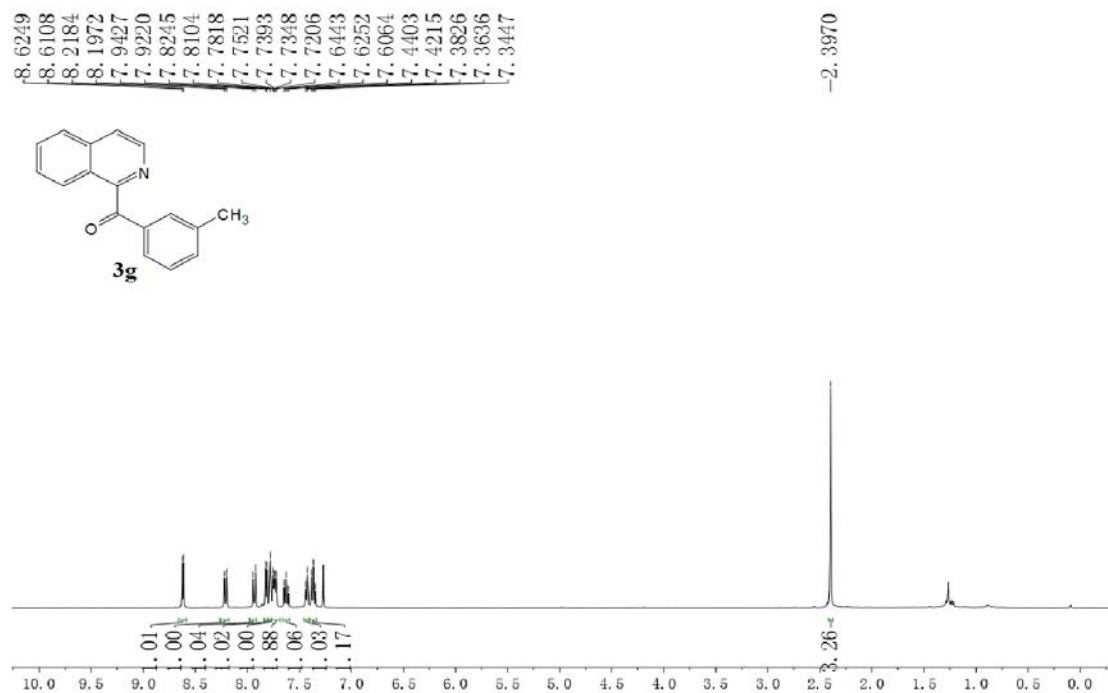


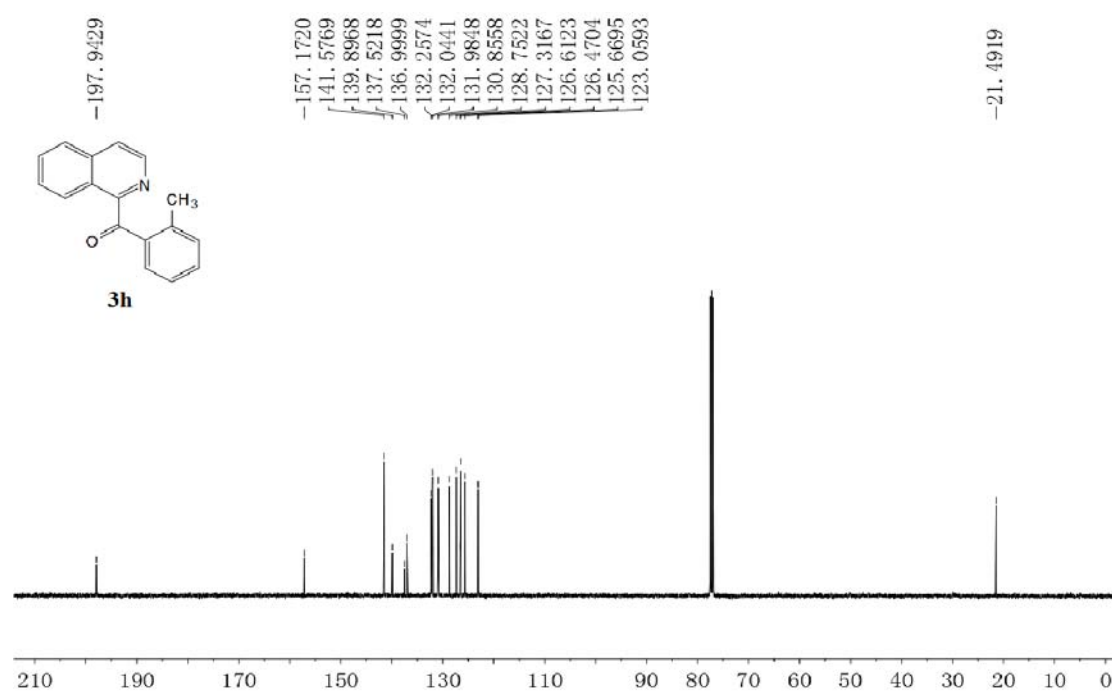
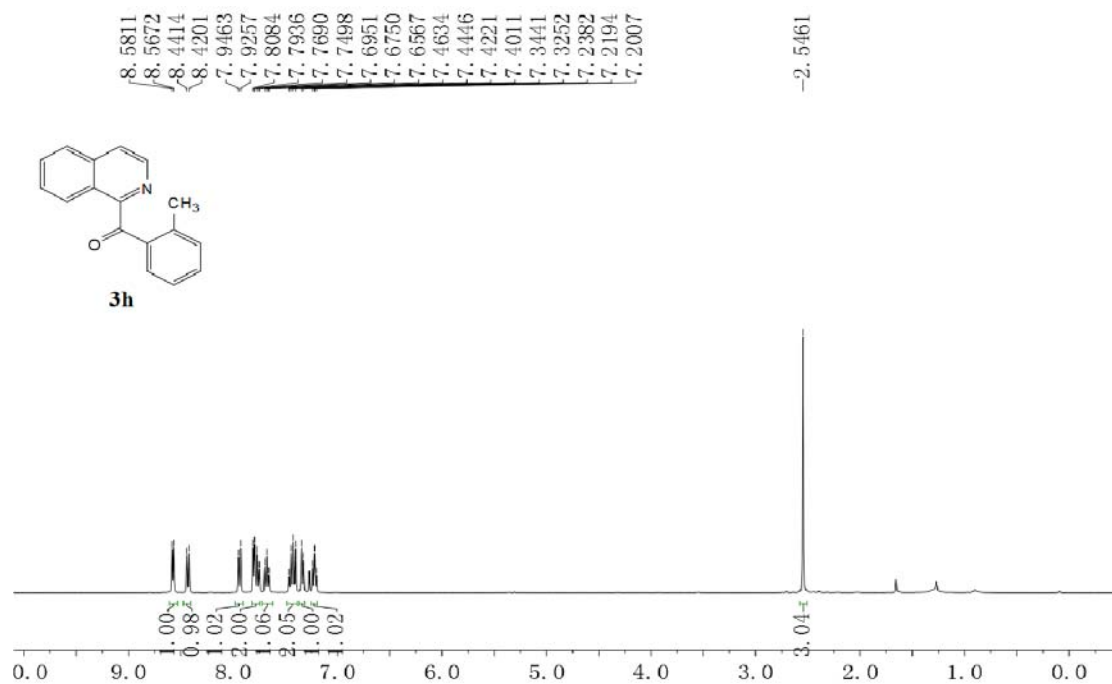




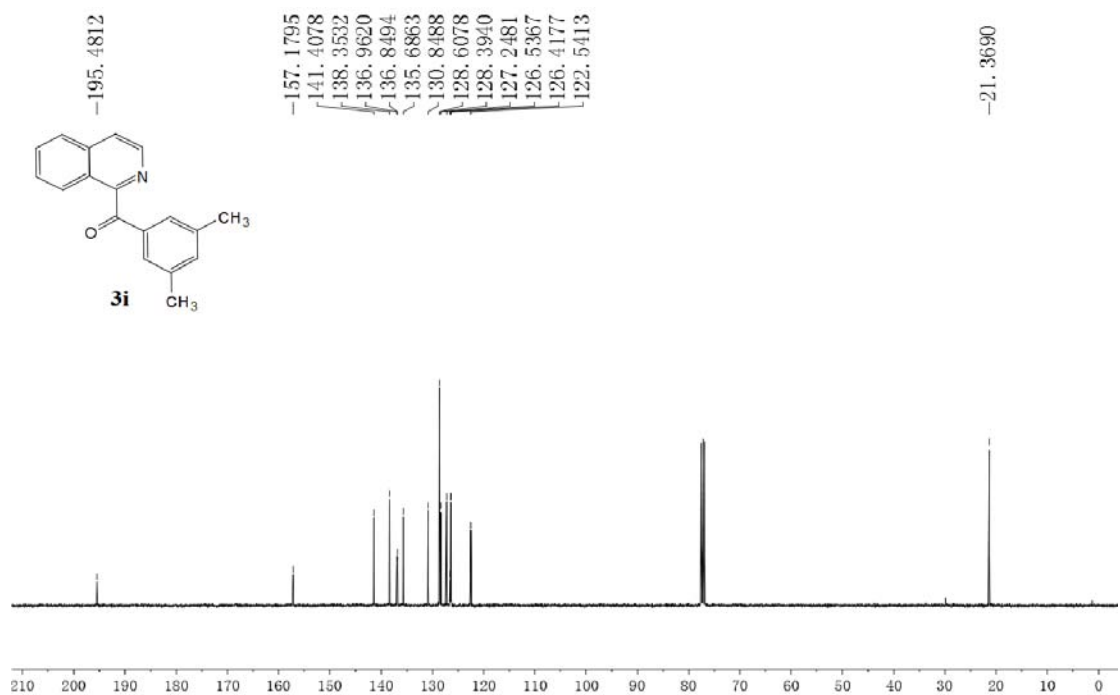
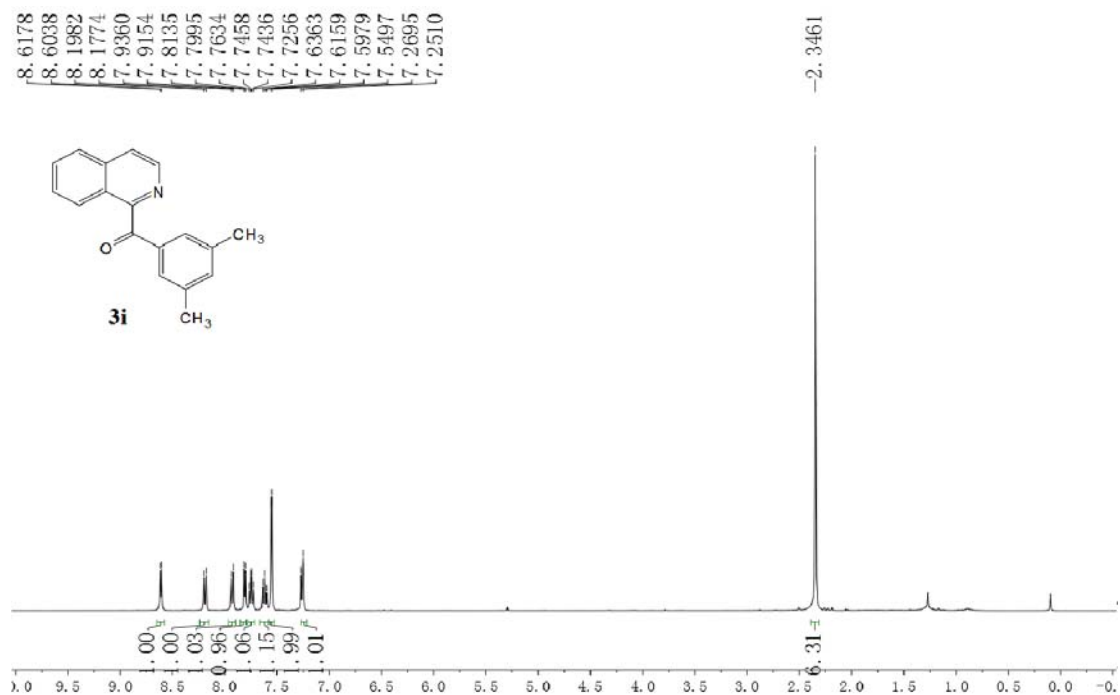




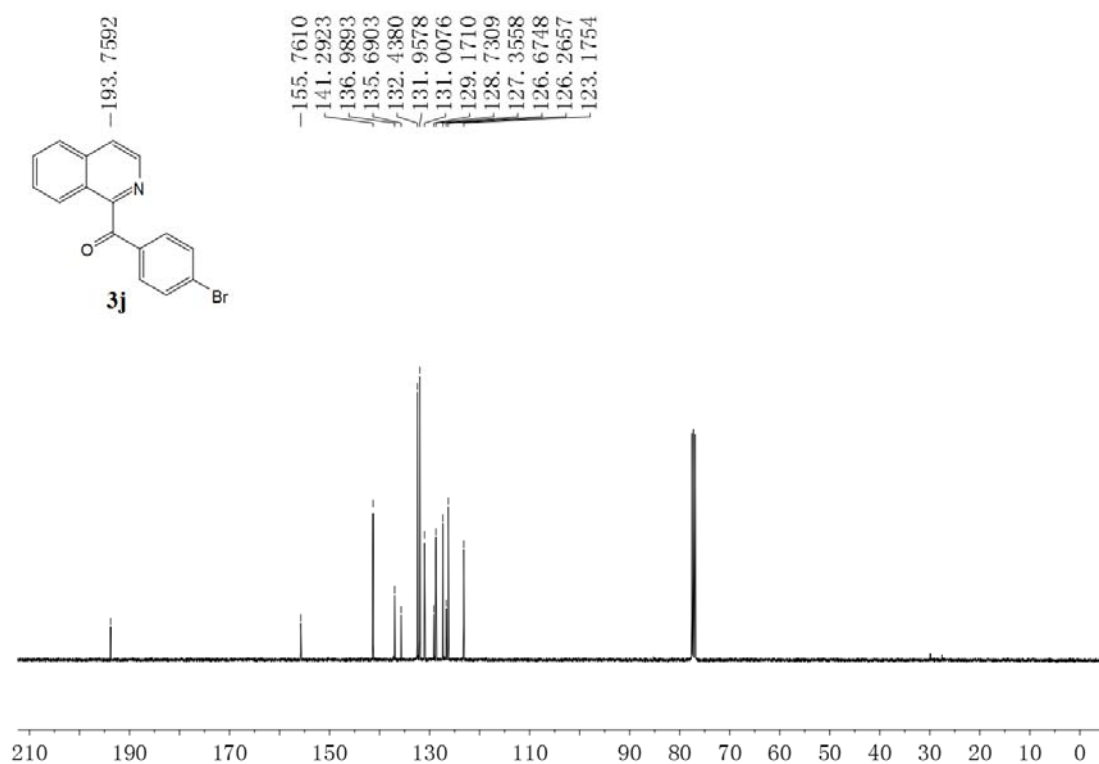
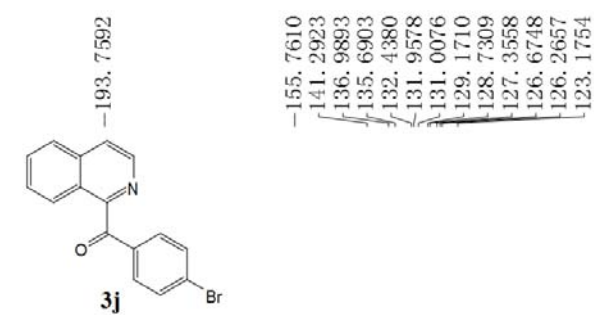
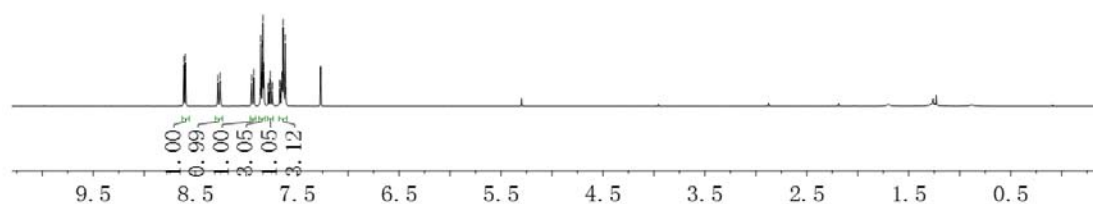
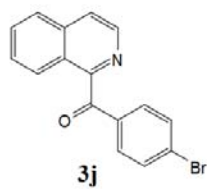


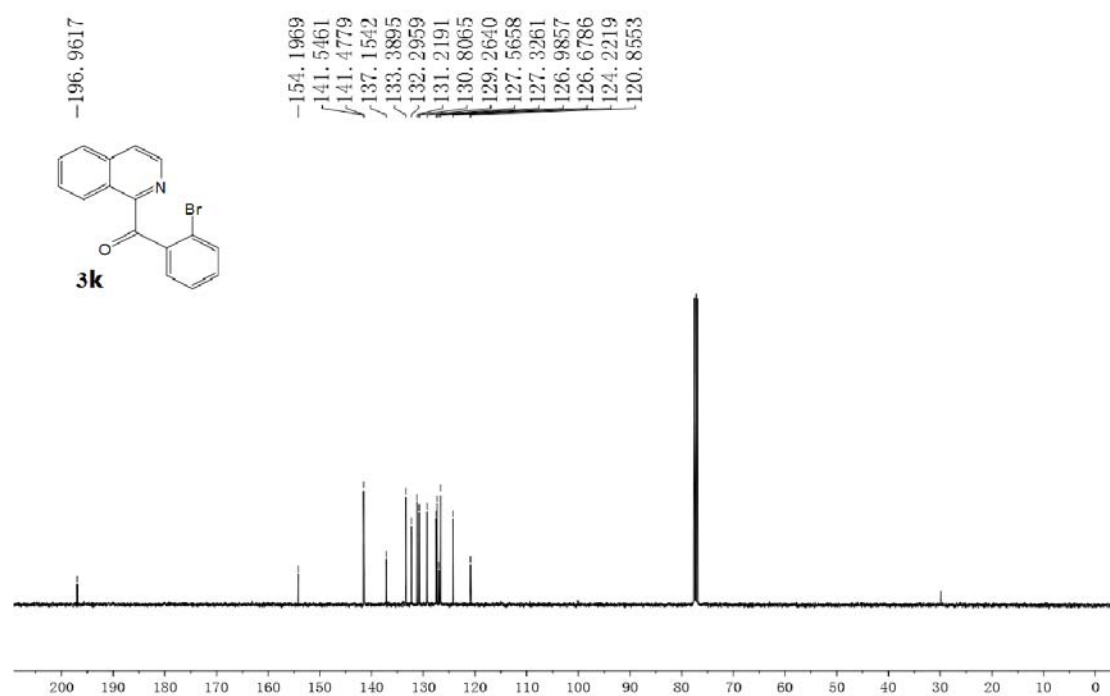
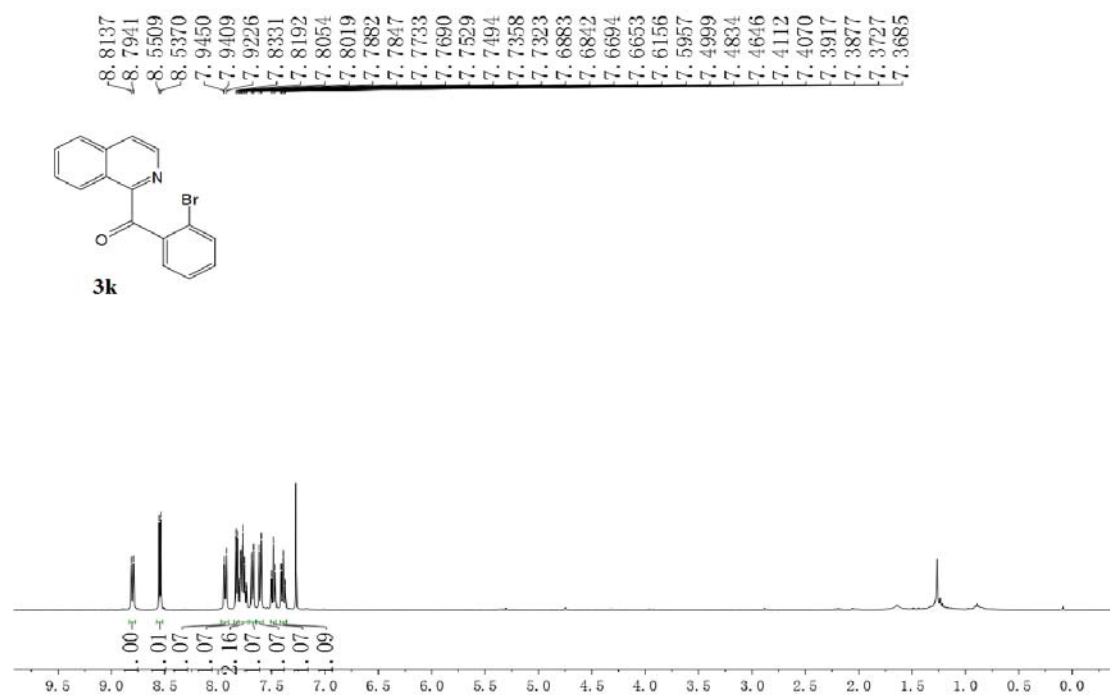




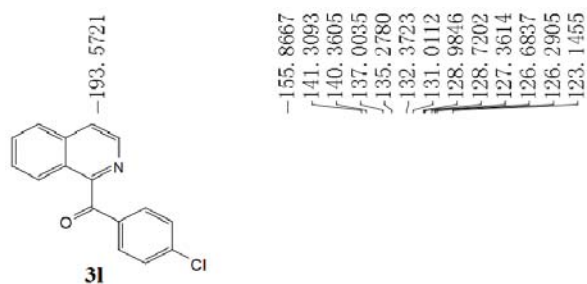
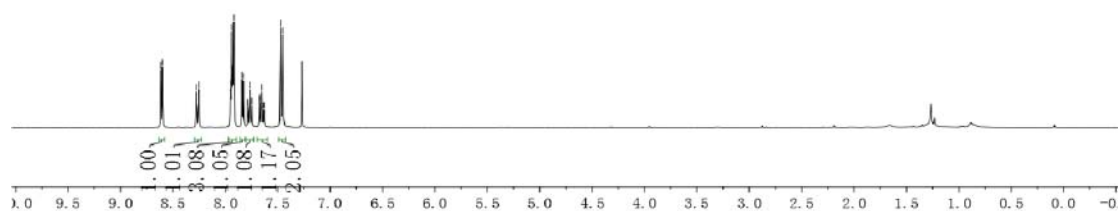
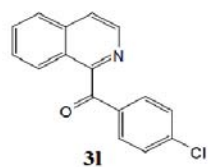


8.6107  
8.5966  
8.2779  
8.2551  
7.9466  
7.9259  
7.8626  
7.8569  
7.8523  
7.8401  
7.8354  
7.8270  
7.7836  
7.7810  
7.7663  
7.7635  
7.7457  
7.7431  
7.6707  
7.6678  
7.6532  
7.6498  
7.6464  
7.6438  
7.6378  
7.6328  
7.6209  
7.6162  
7.6107

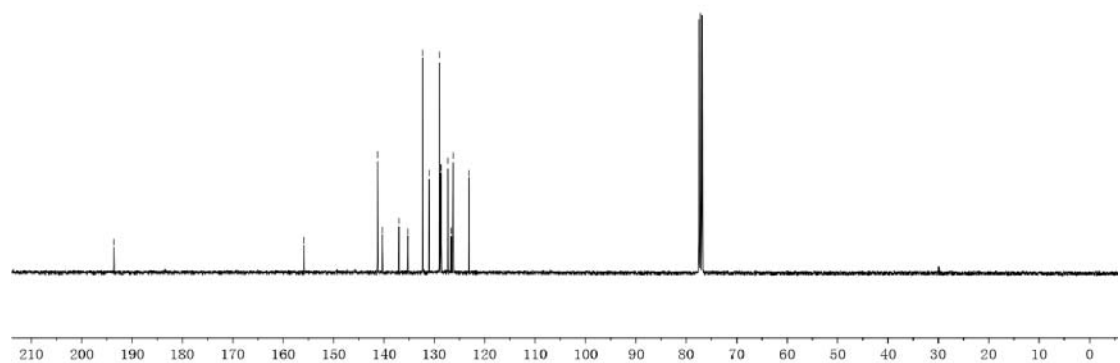




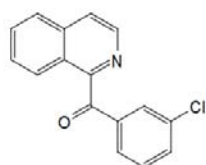
8.6150  
8.6010  
8.2751  
8.2539  
7.9493  
7.9400  
7.9356  
7.9291  
7.9234  
7.9185  
7.8416  
7.8277  
7.7859  
7.7839  
7.7663  
7.7482  
7.7461  
7.6720  
7.6697  
7.6515  
7.6335  
7.6312  
7.4722  
7.4508



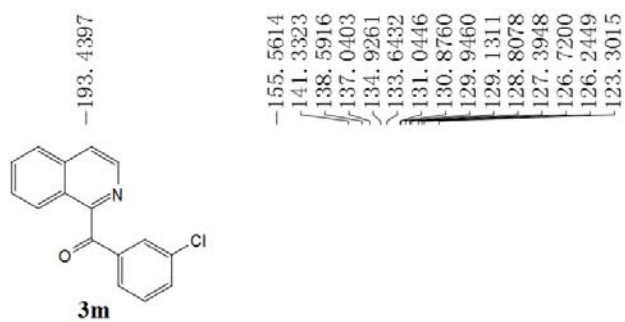
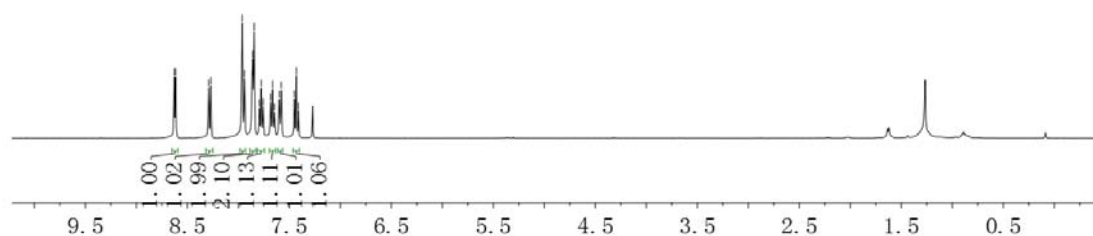
193.5721  
155.8667  
141.3093  
140.3605  
137.0035  
135.2780  
132.3723  
131.0112  
128.9846  
128.7202  
127.3614  
126.6837  
126.2905  
123.1455



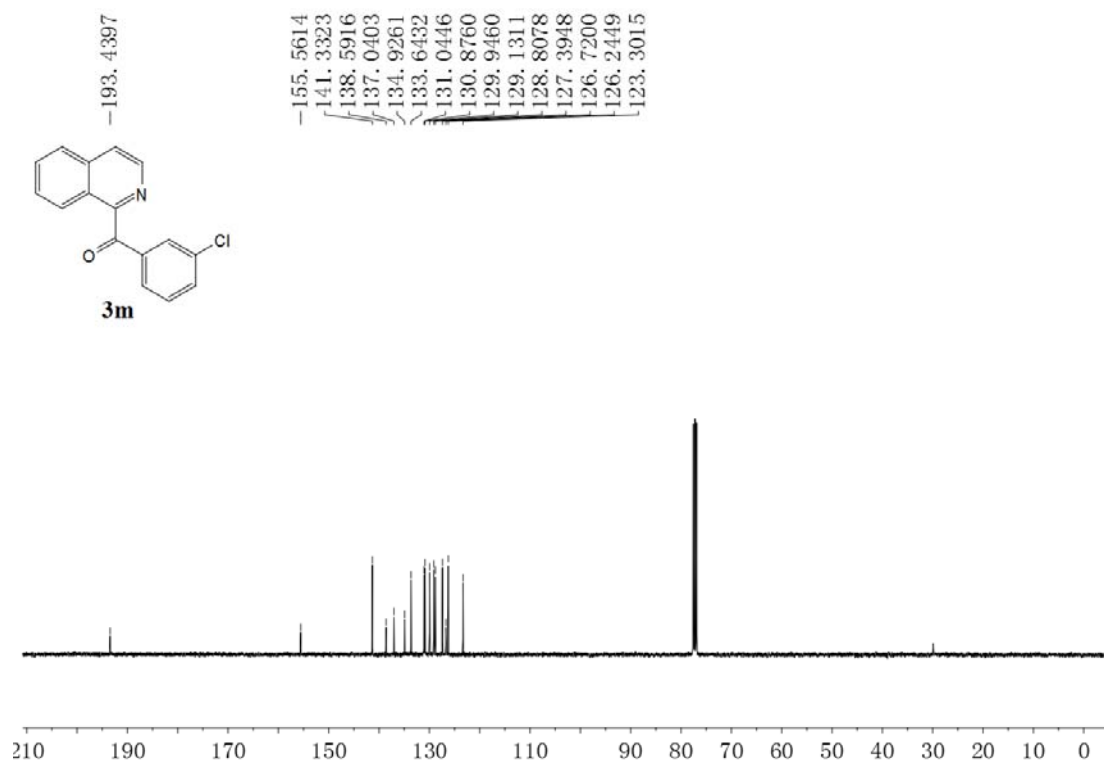
8.6285  
8.6146  
8.2913  
8.2700  
7.9625  
7.9395  
7.8590  
7.8448  
7.7951  
7.7754  
7.7573  
7.6842  
7.6637  
7.6458  
7.5991  
7.5792  
7.4509  
7.4313  
7.4116

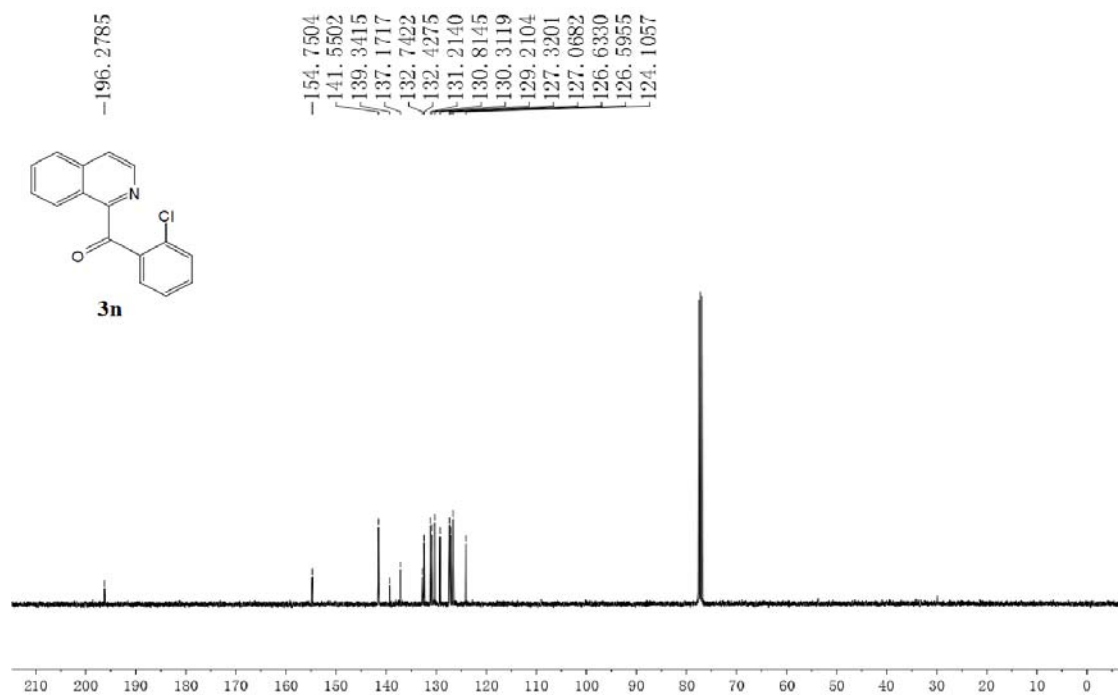
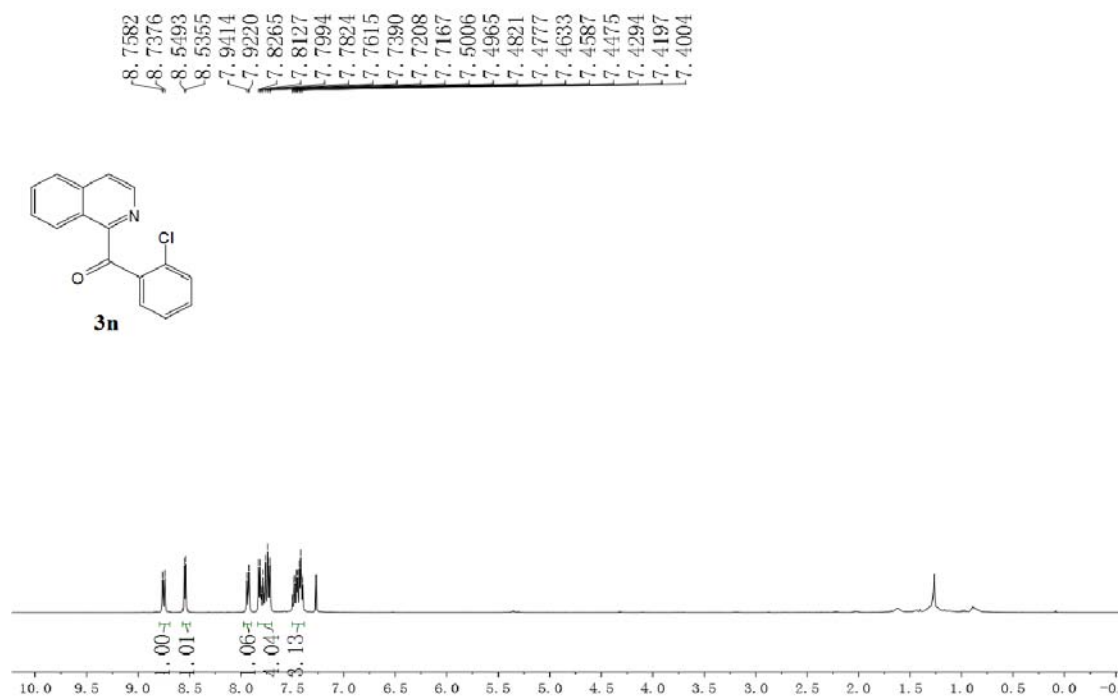


**3m**

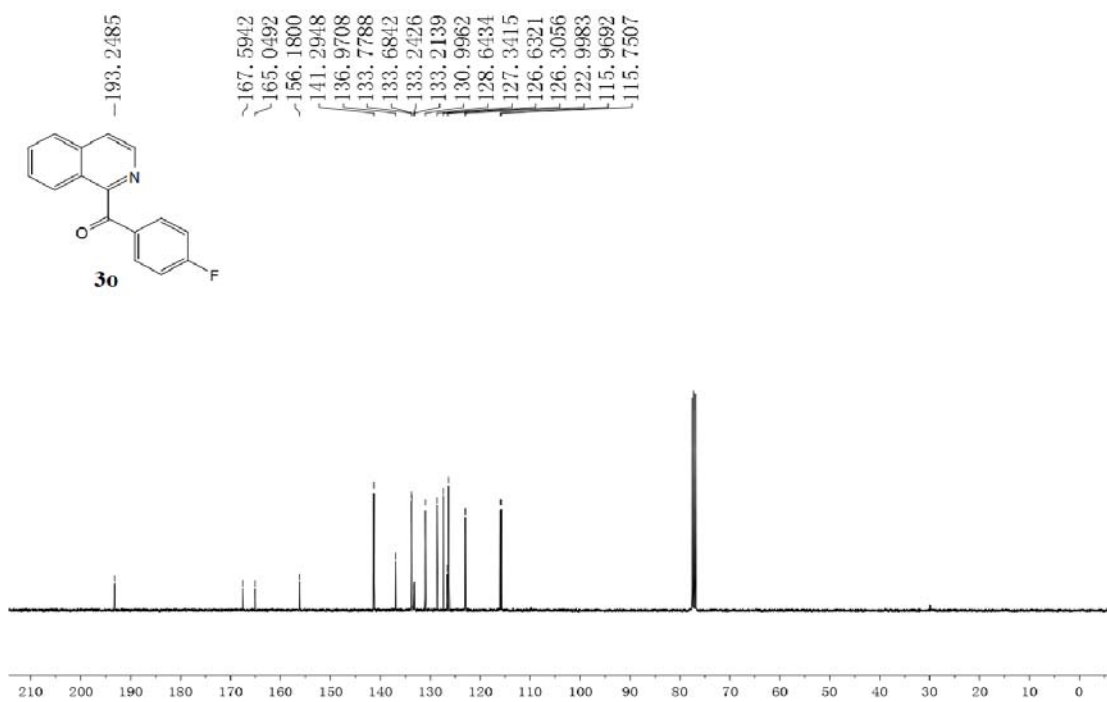
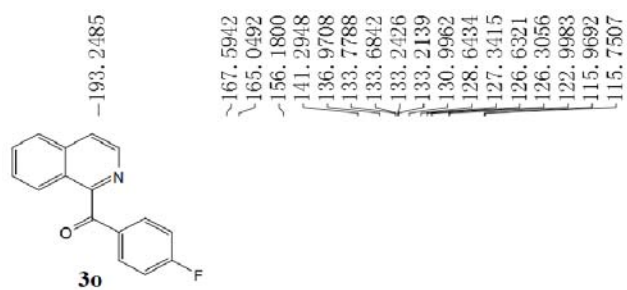
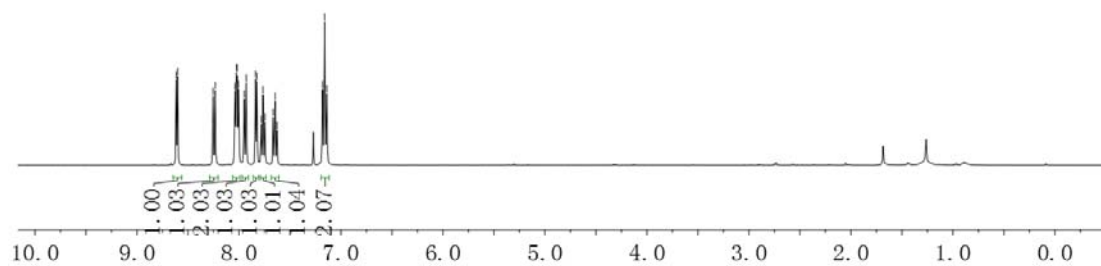
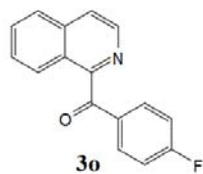


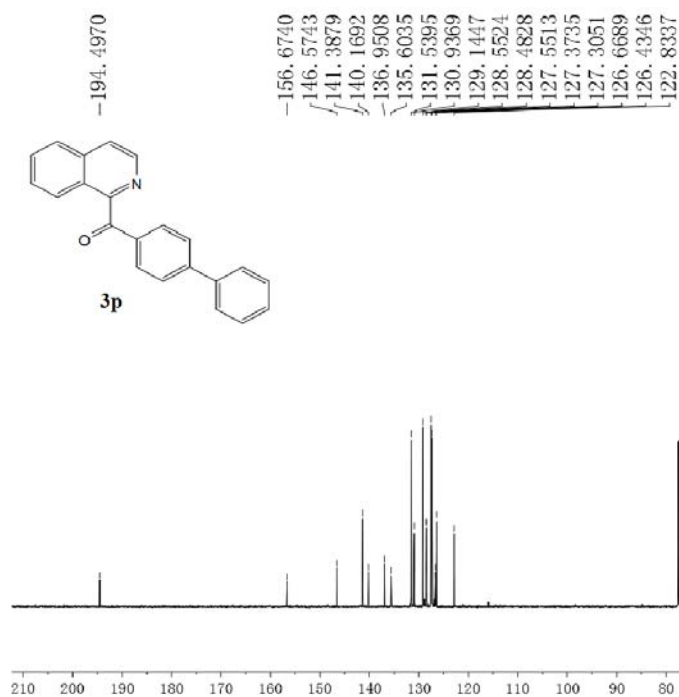
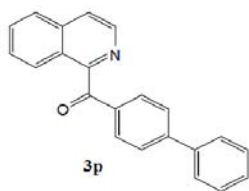
**3m**



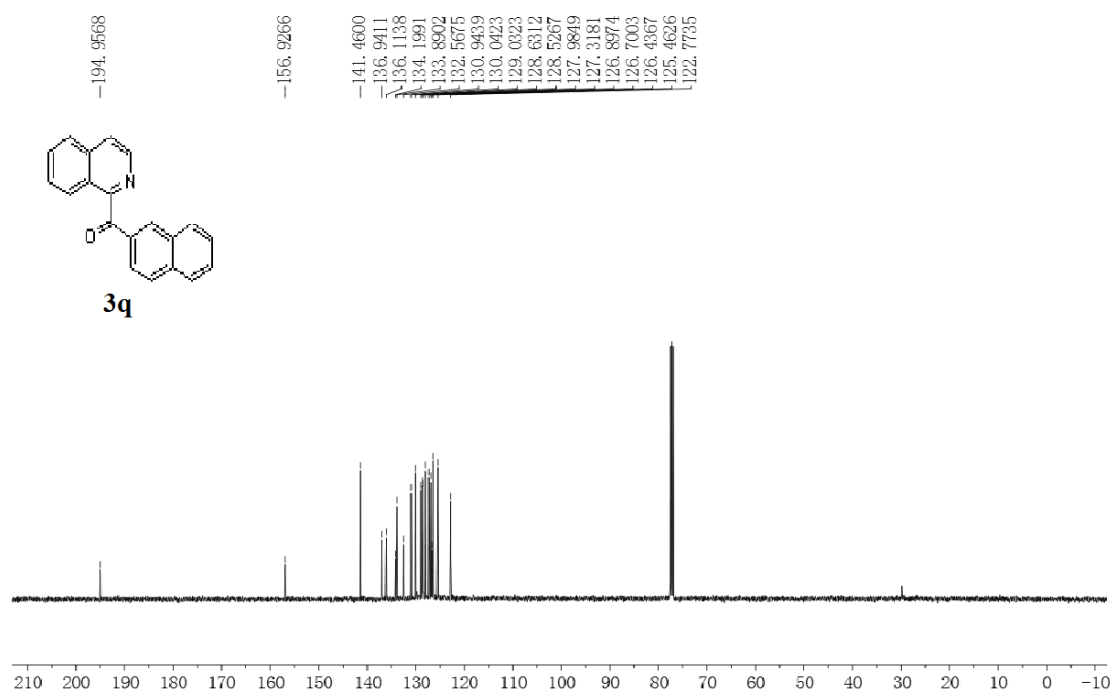
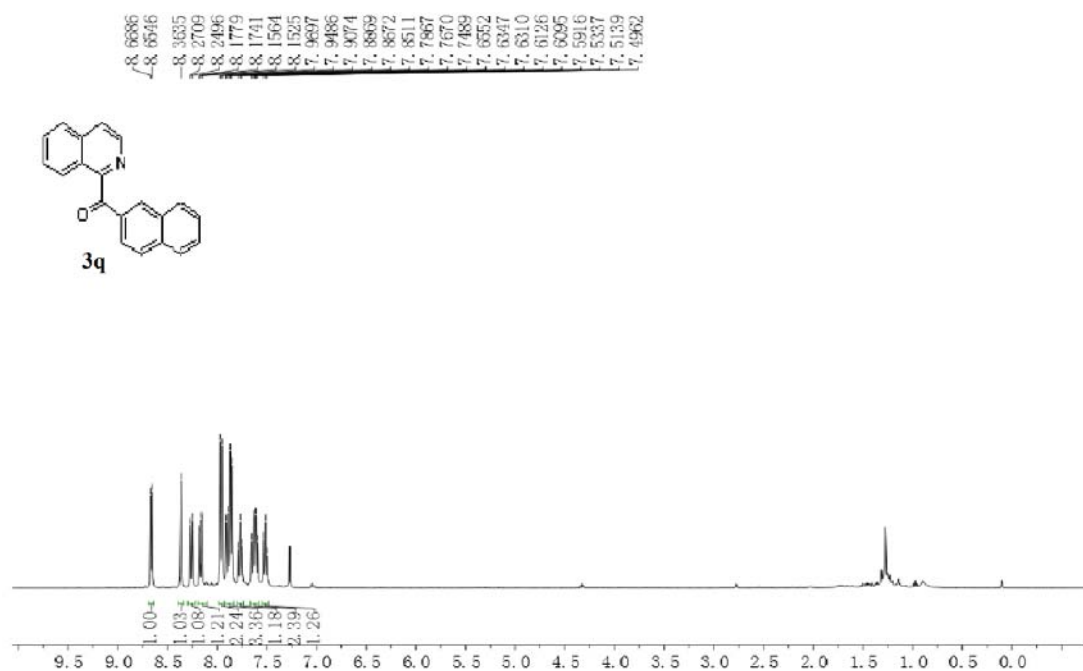


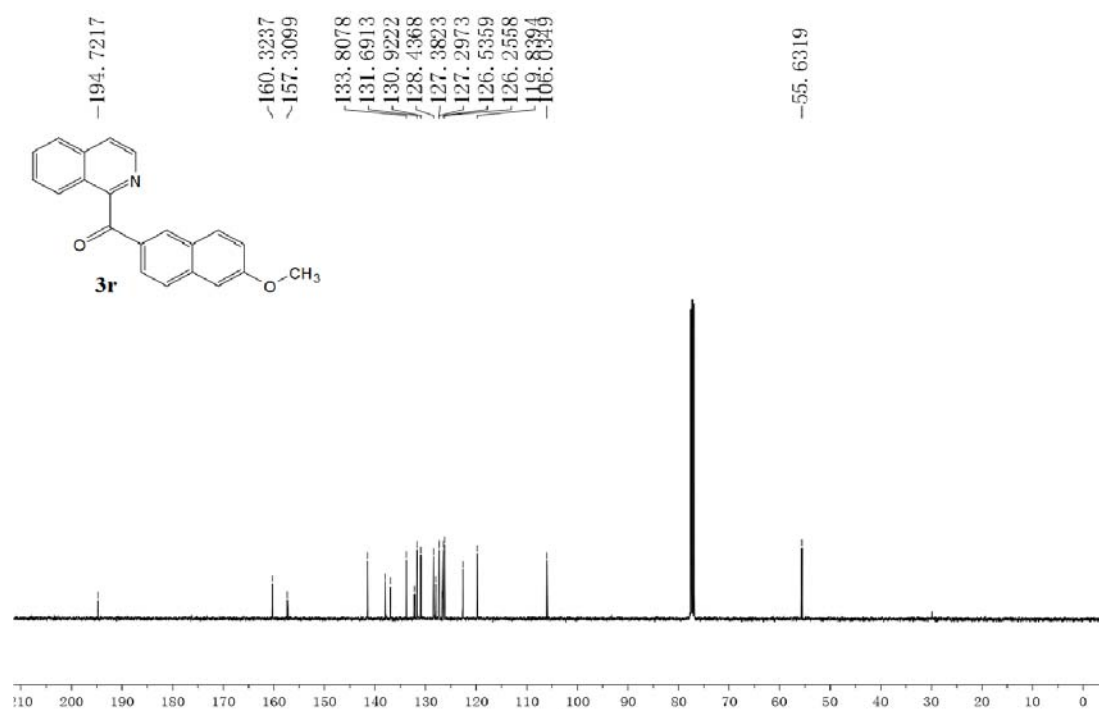
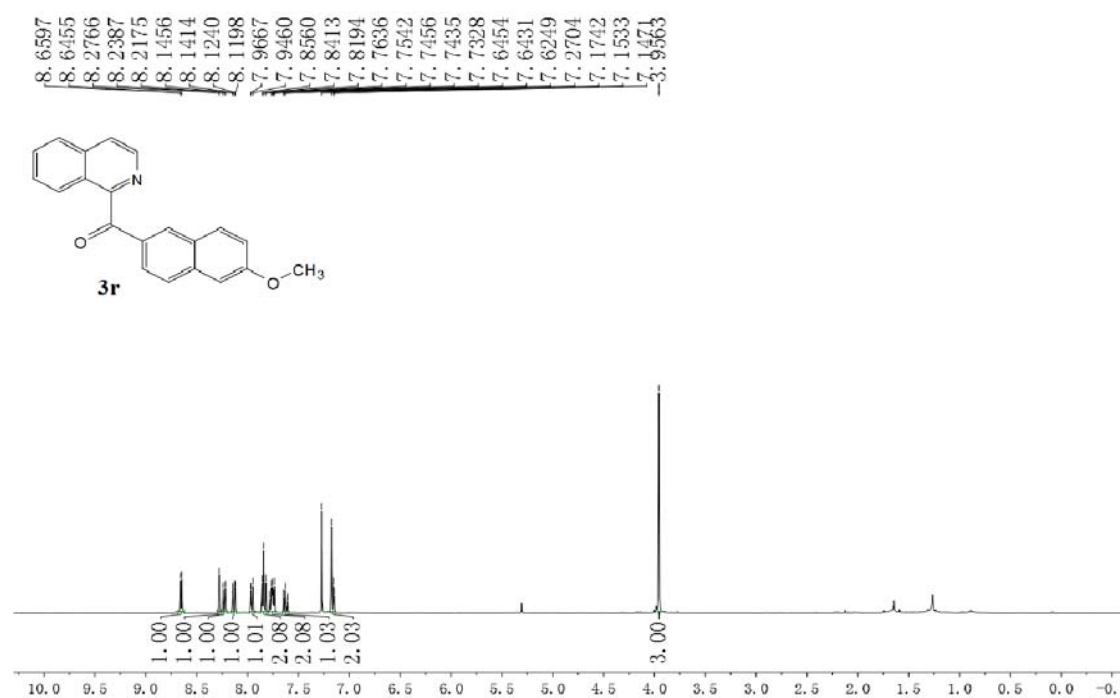
8.6149  
8.6009  
8.2538  
8.2325  
8.0388  
8.0244  
8.0184  
8.0040  
7.9488  
7.9282  
7.8379  
7.8239  
7.7825  
7.7645  
7.7447  
7.6648  
7.6452  
7.6264  
7.1806  
7.1594  
7.1382

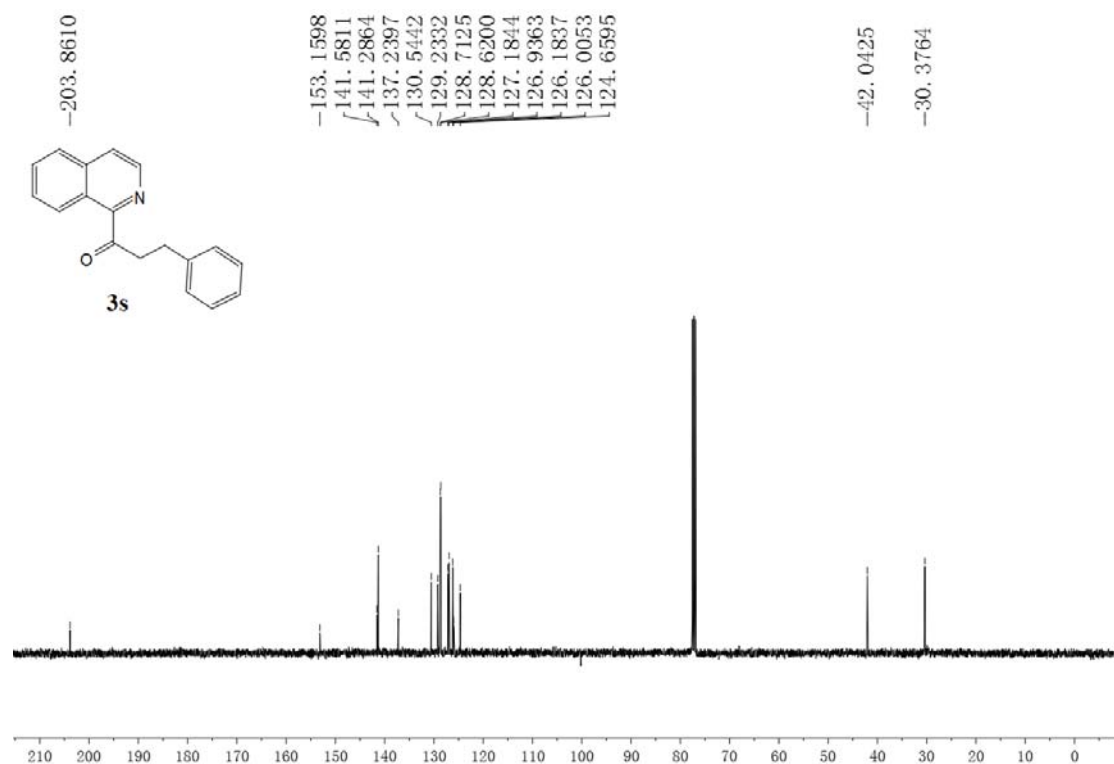
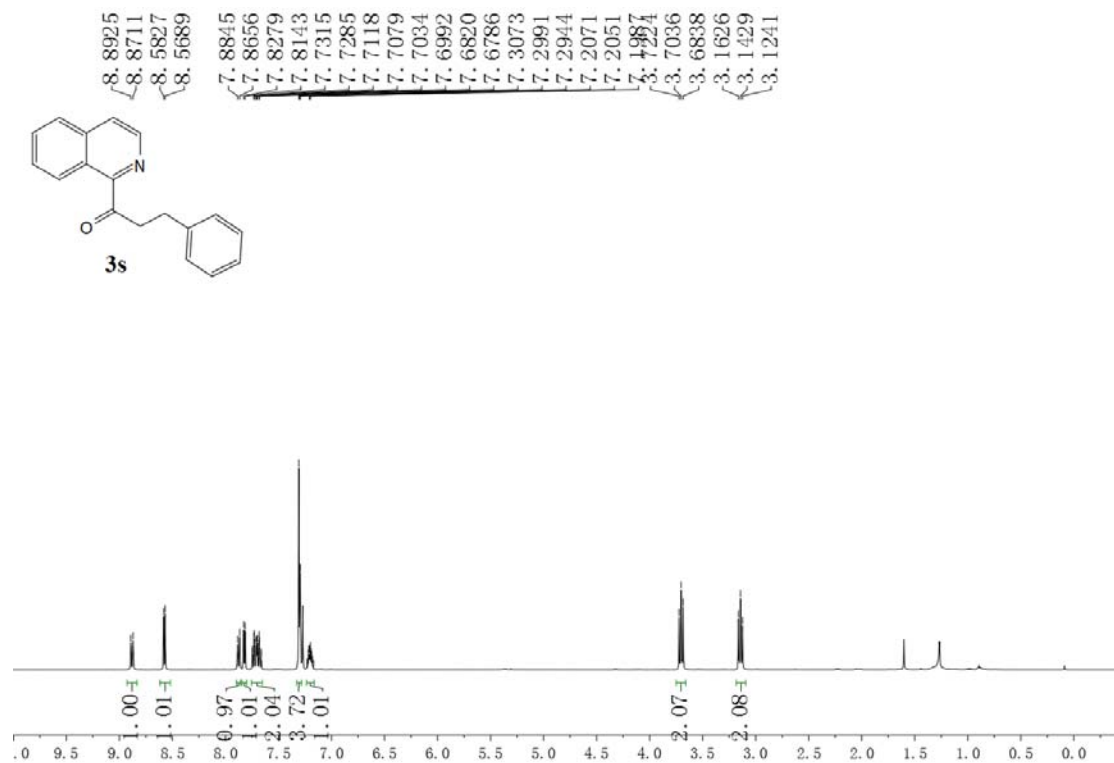


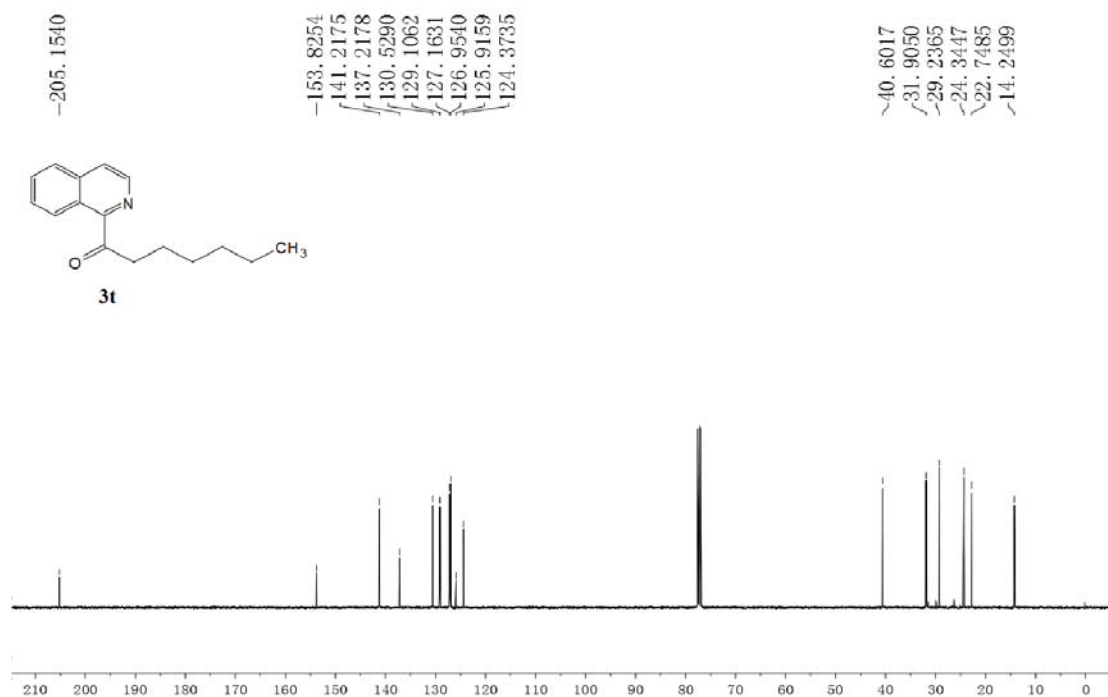
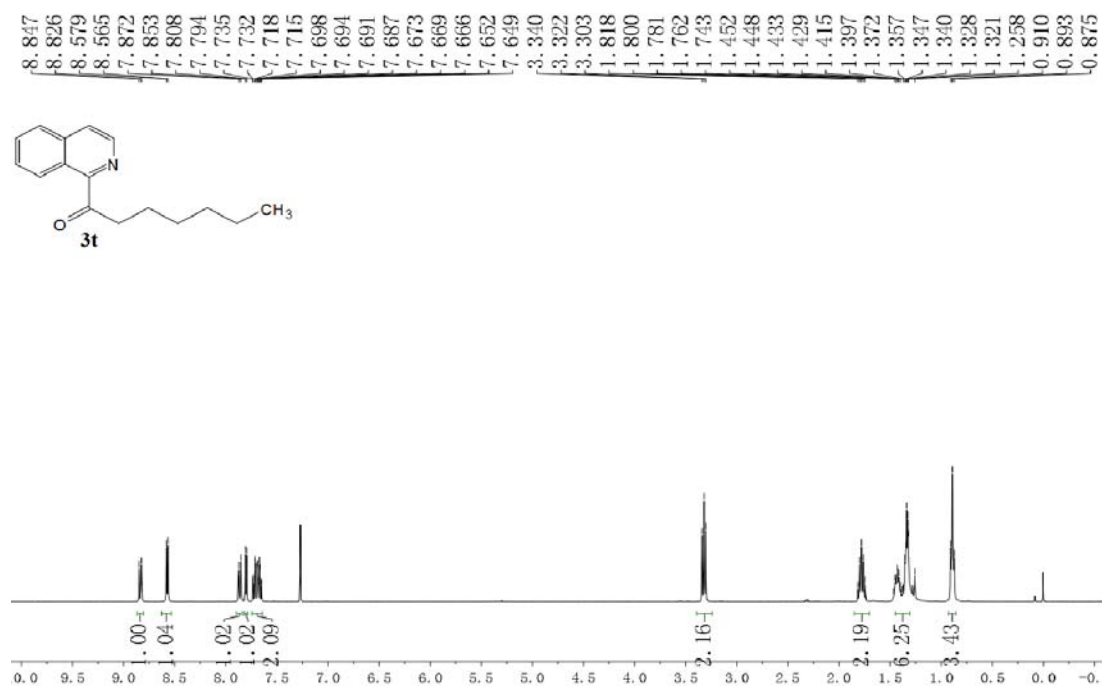


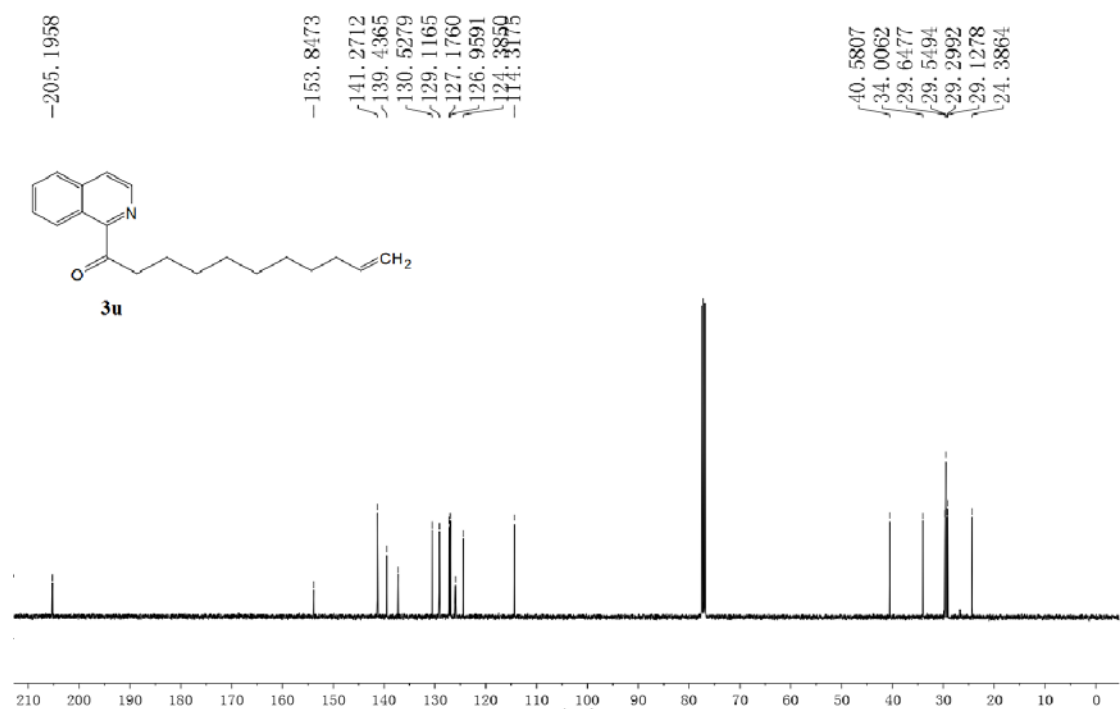
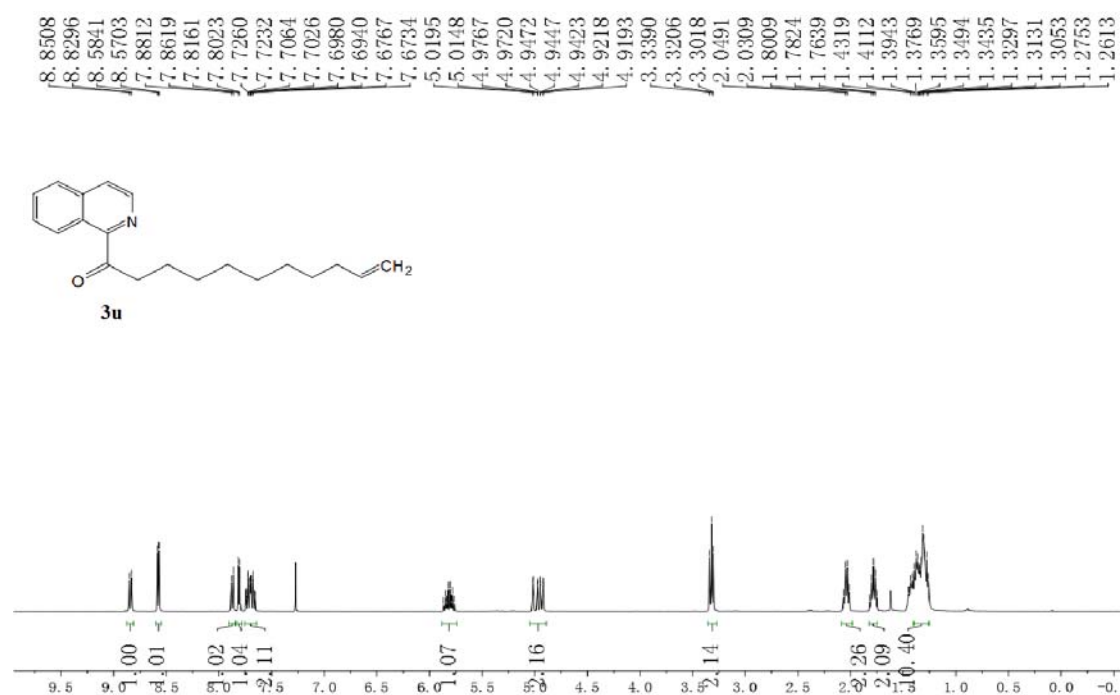


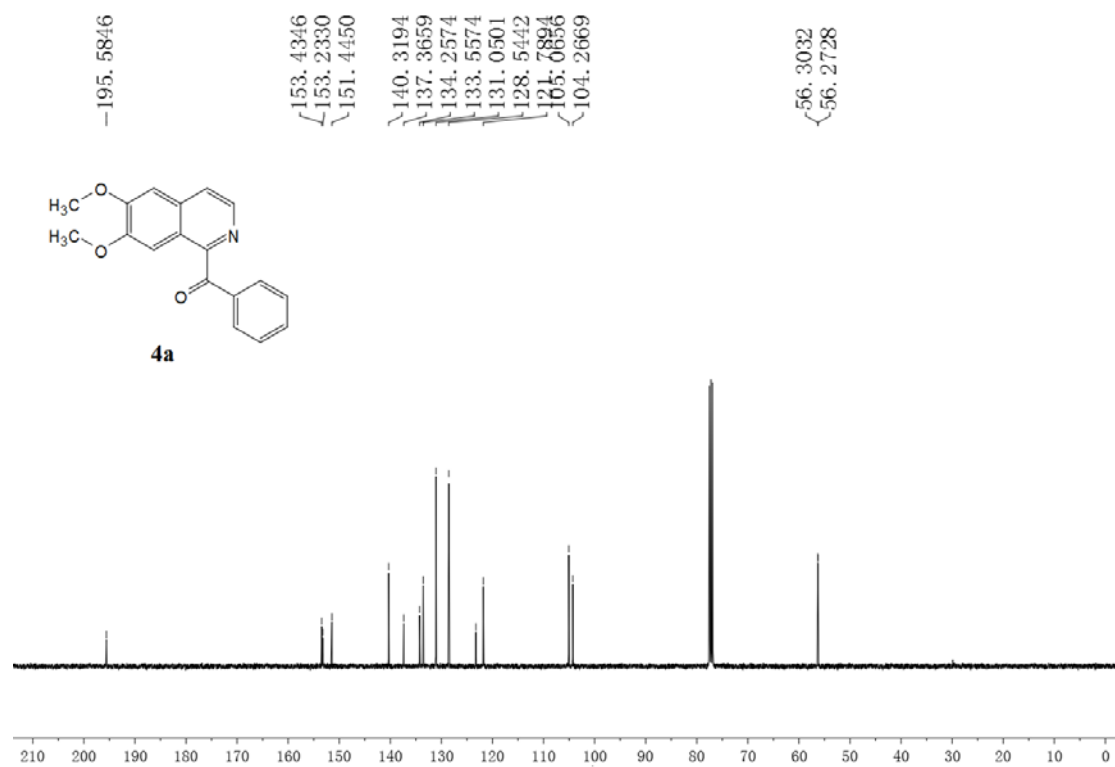
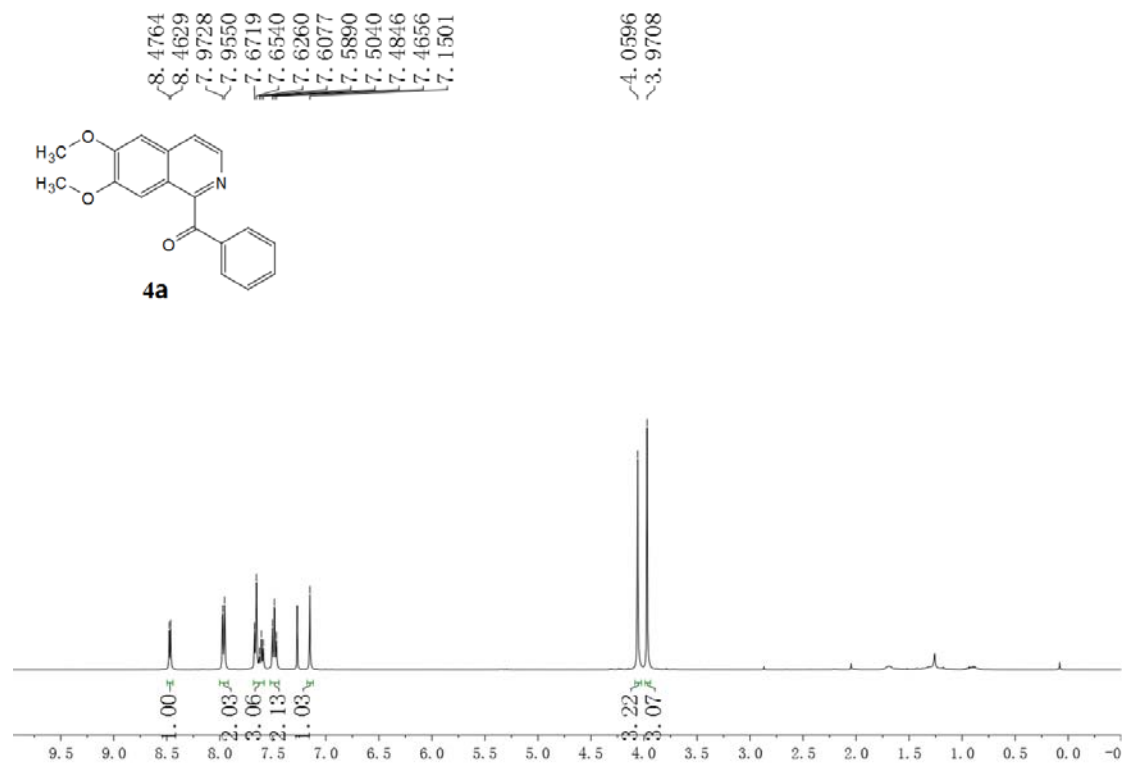


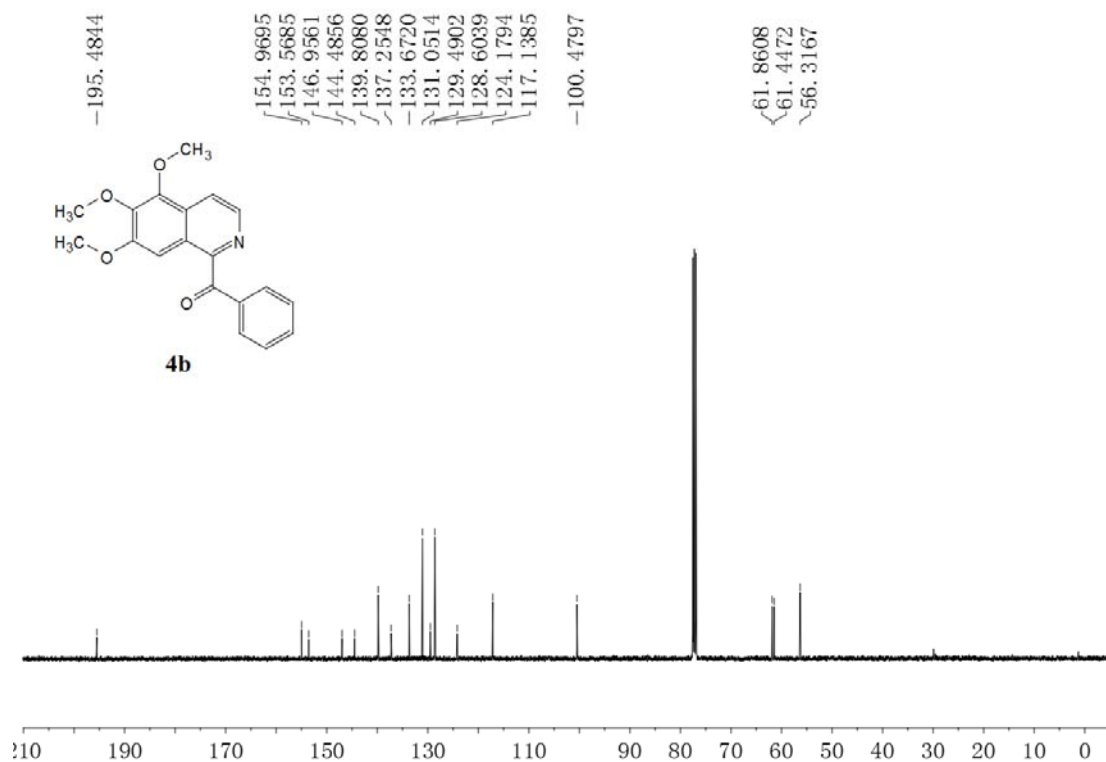
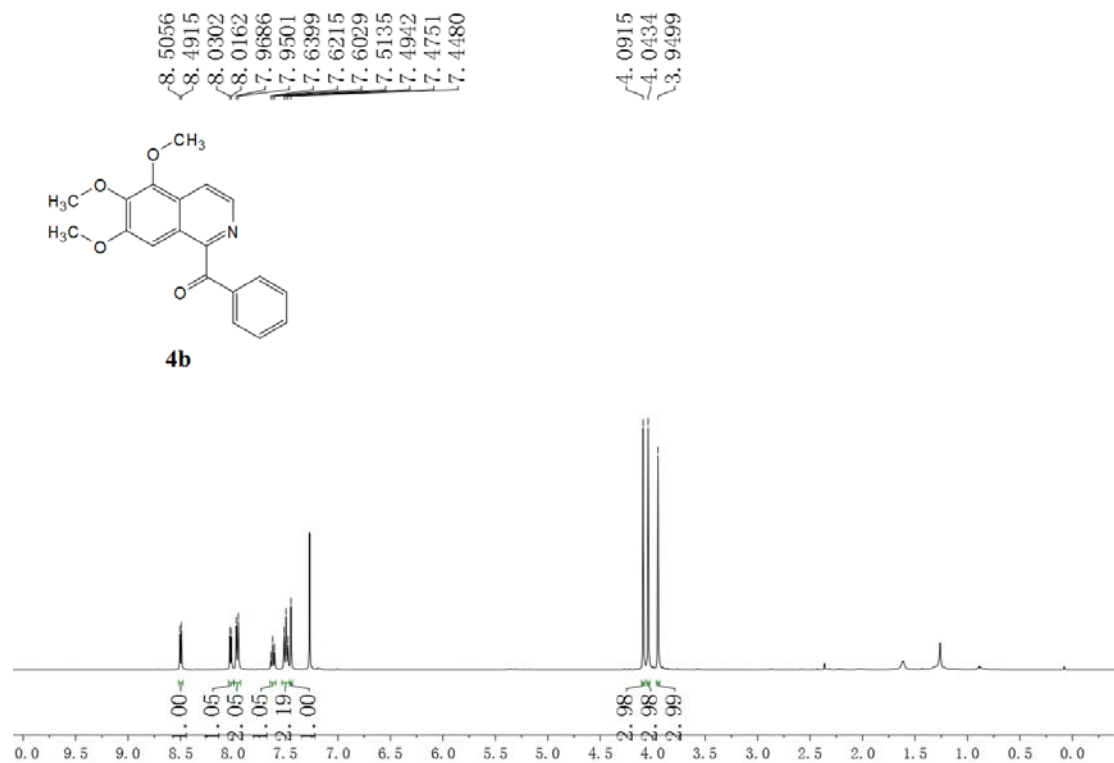




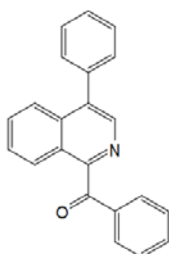




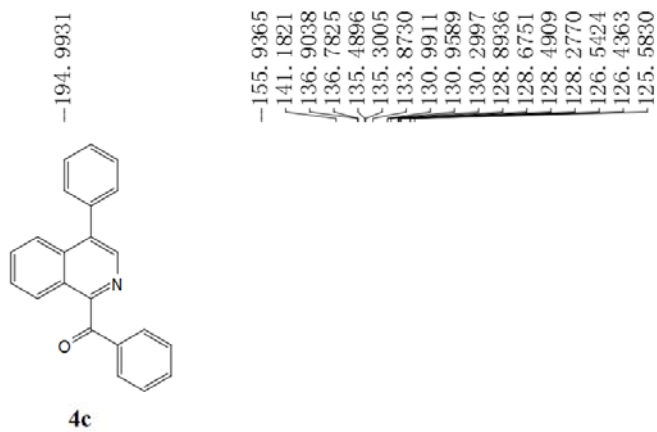
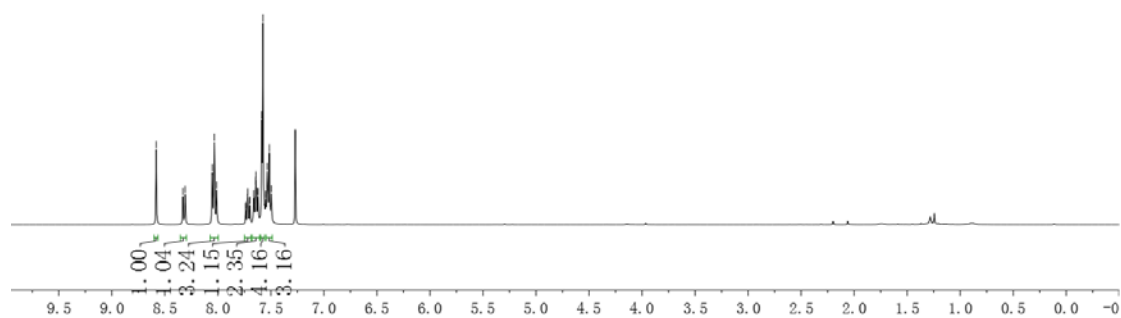




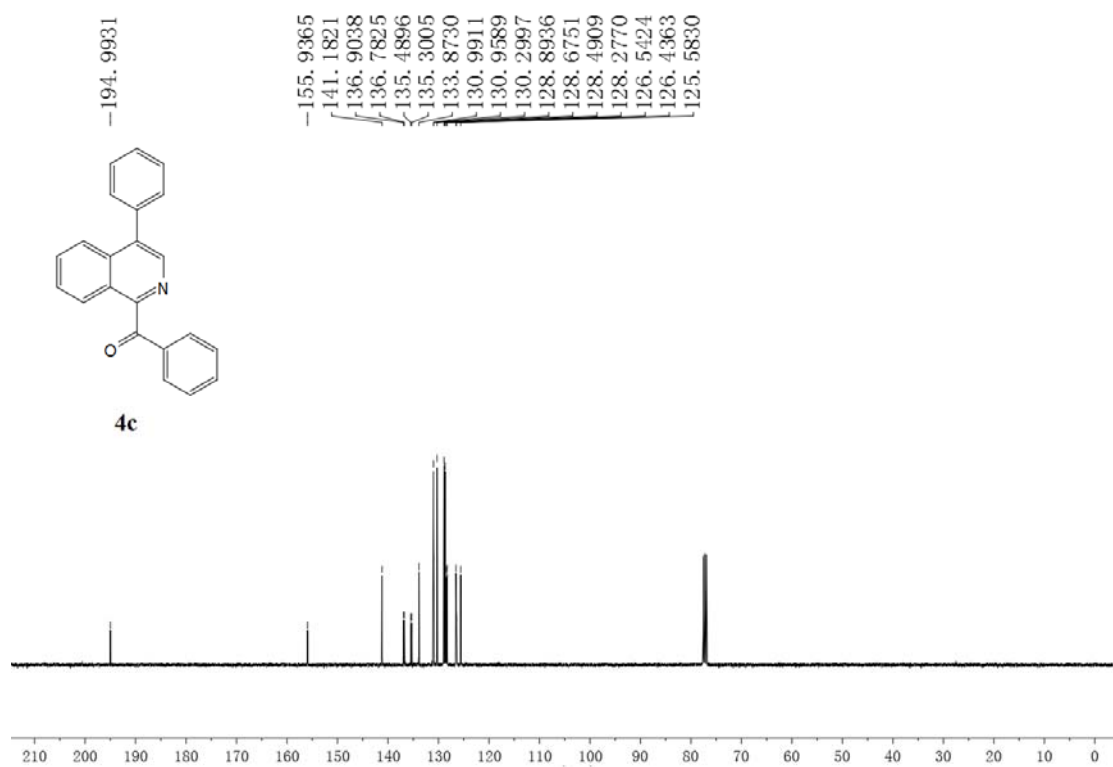
8.5812  
8.3293  
8.3083  
8.0521  
8.0335  
8.0120  
7.7384  
7.7357  
7.7212  
7.7183  
7.7003  
7.6974  
7.6622  
7.6582  
7.6442  
7.6404  
7.6240  
7.6210  
7.5861  
7.5752  
7.5491  
7.5344  
7.5147  
7.4959



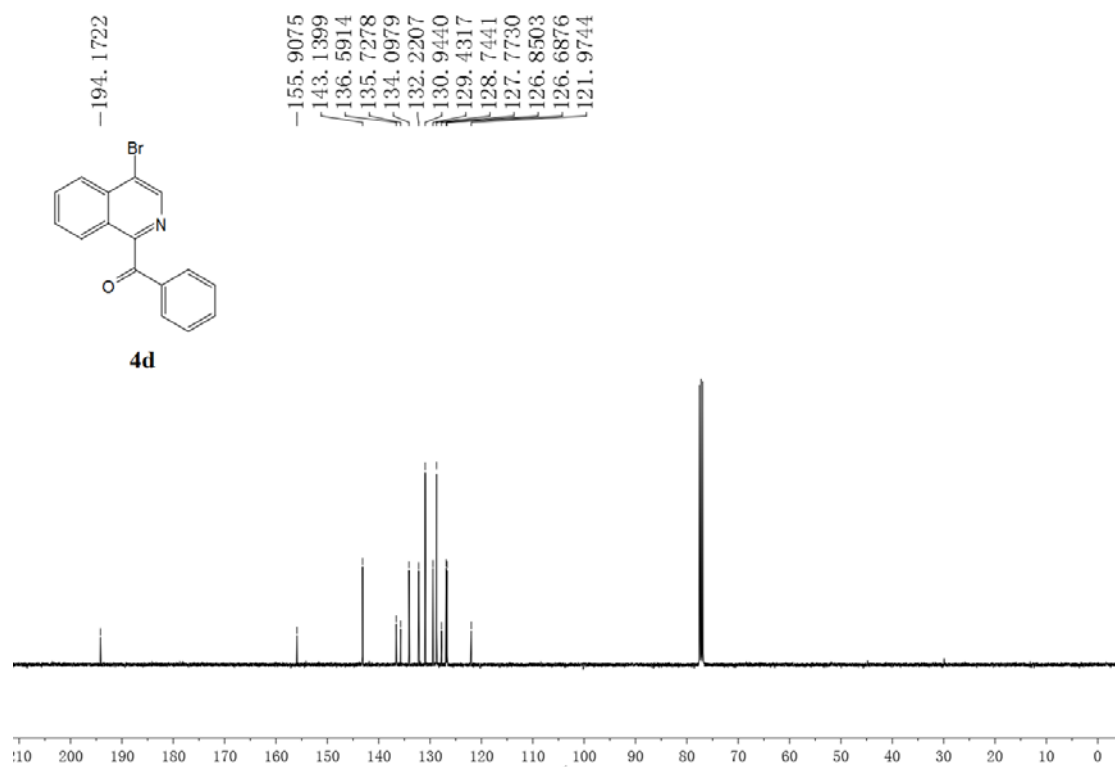
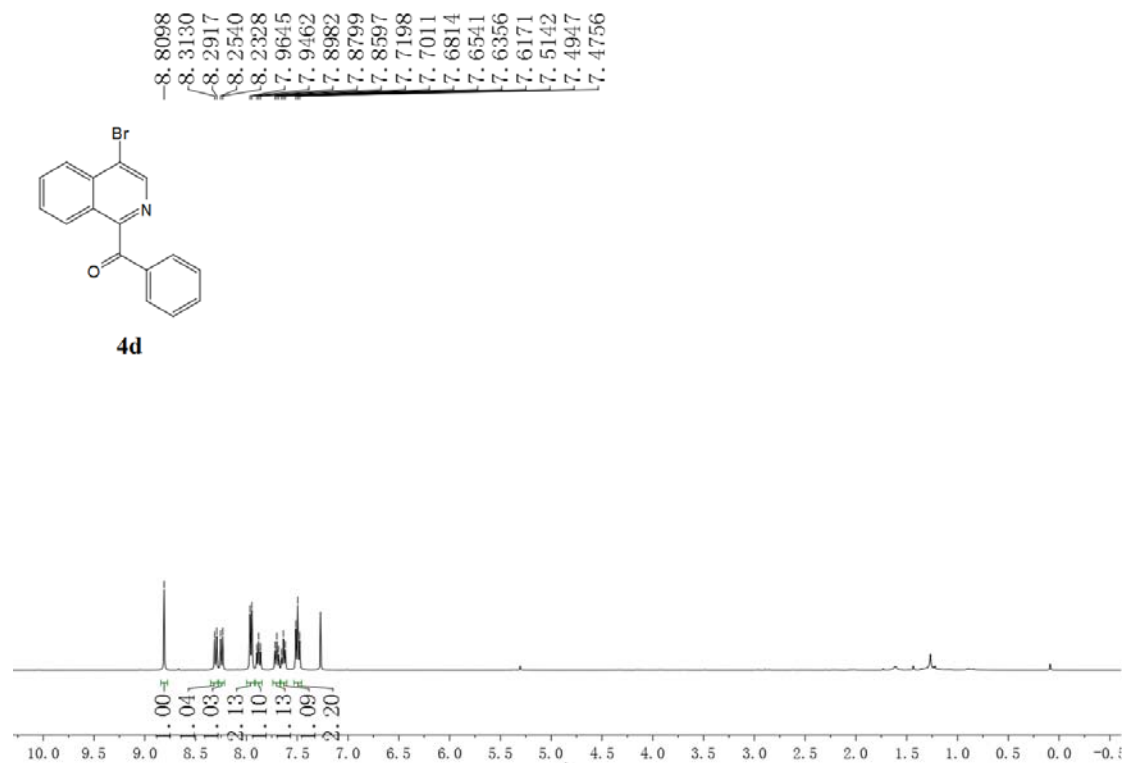
**4c**



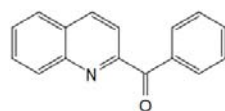
**4c**



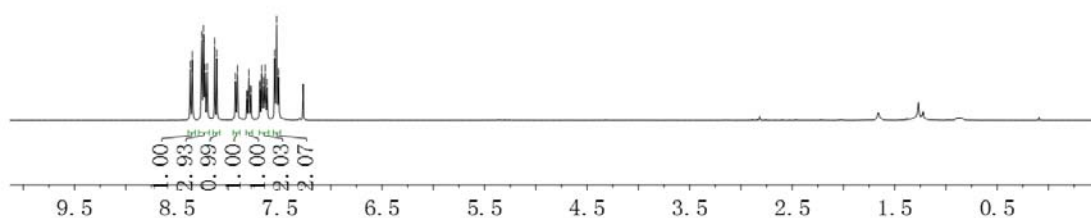




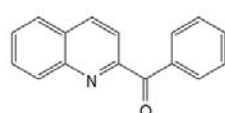
8.3719  
8.3507  
8.2603  
8.2424  
8.2392  
8.2267  
8.2052  
8.1333  
8.1121  
7.9307  
7.9104  
7.8200  
7.8170  
7.7994  
7.7817  
7.7787  
7.6938  
7.6919  
7.6741  
7.6566  
7.6406  
7.6221  
7.5480  
7.5286  
7.5099



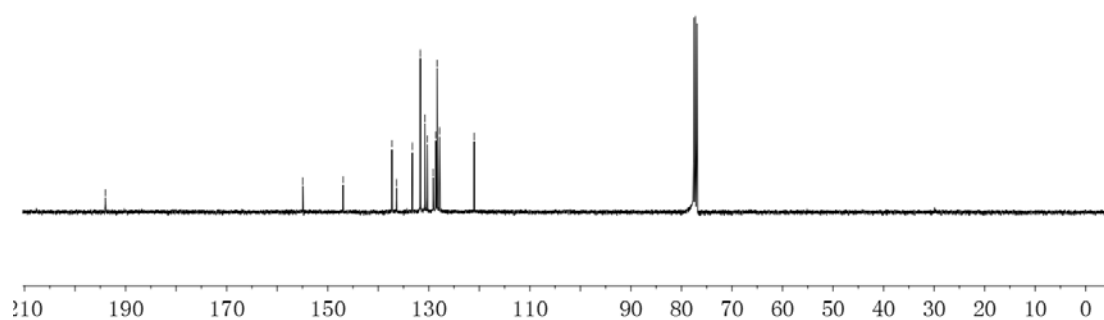
4e-1



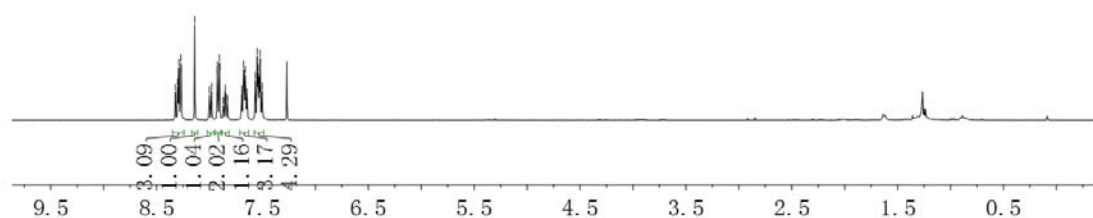
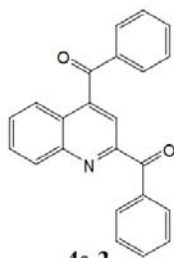
193.9891  
154.9268  
146.9532  
137.2806  
136.3768  
133.2553  
131.6602  
130.7665  
130.2871  
129.1115  
128.6150  
128.3502  
127.8493  
121.0011



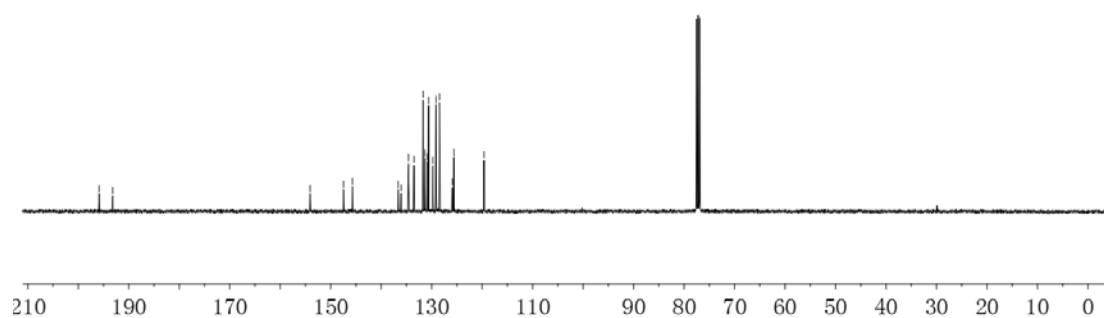
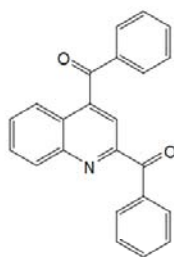
4e-1



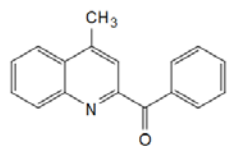
8.3220  
8.3007  
8.2888  
8.2711  
8.2676  
8.1402  
8.0011  
7.9800  
7.9274  
7.9249  
7.9071  
7.9038  
7.8714  
7.8683  
7.8540  
7.8507  
7.8474  
7.8329  
7.8298  
7.6953  
7.6928  
7.6788  
7.6750  
7.6715  
7.6635  
7.6478  
7.6450  
7.5692  
7.5495  
7.5416  
7.5307  
7.5222  
7.5026



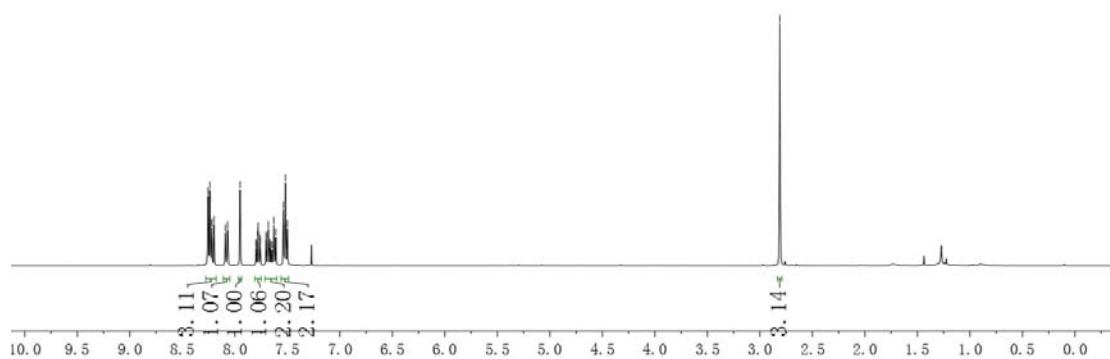
~195.8689  
~193.1924  
154.0775  
147.4575  
145.6930  
136.6453  
136.0572  
134.5939  
133.4893  
131.6862  
131.3195  
130.8226  
130.6005  
129.7537  
129.1173  
128.4490  
125.9174  
125.5877  
119.6355



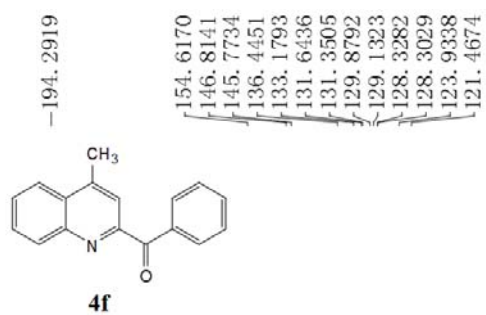
8.2545  
8.2366  
8.2333  
8.2193  
8.2181  
8.1982  
8.0896  
8.0689  
7.9497  
7.7982  
7.7952  
7.7808  
7.7777  
7.7601  
7.7570  
7.7014  
7.6986  
7.6839  
7.6809  
7.6634  
7.6606  
7.6471  
7.6286  
7.6101  
7.5371  
7.5176  
7.4989



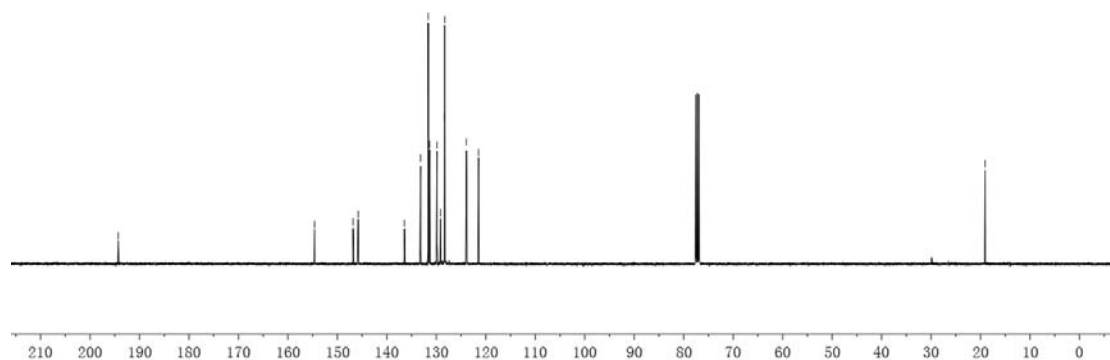
**4f**



-2.8105



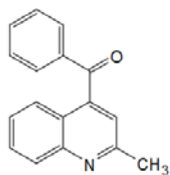
**4f**



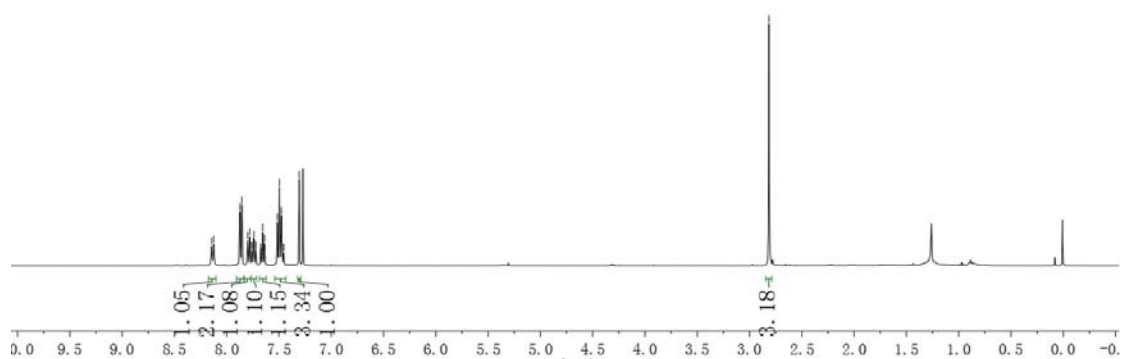
-19.0775

8.1442  
8.1230  
7.8726  
7.8548  
7.8515  
7.7995  
7.7786  
7.7612  
7.7580  
7.7438  
7.7403  
7.7226  
7.7195  
7.6772  
7.6742  
7.6712  
7.6556  
7.6401  
7.6371  
7.6341  
7.5156  
7.4955  
7.4760  
7.4570  
7.4546  
7.3062

-2.8143

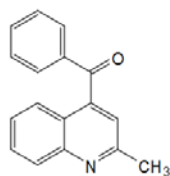


4g

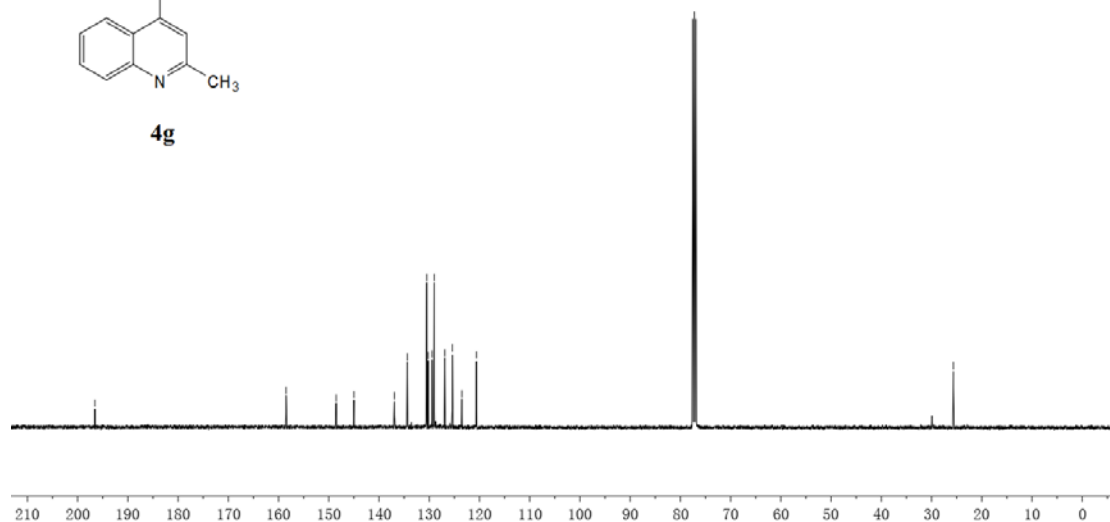


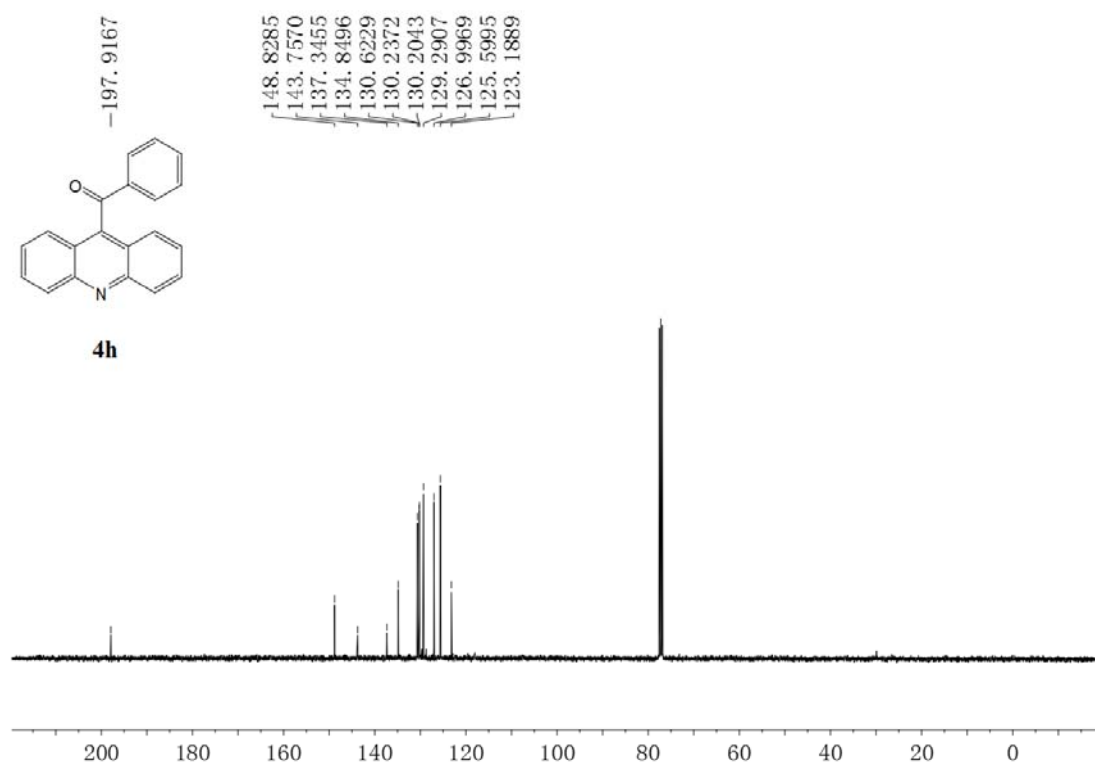
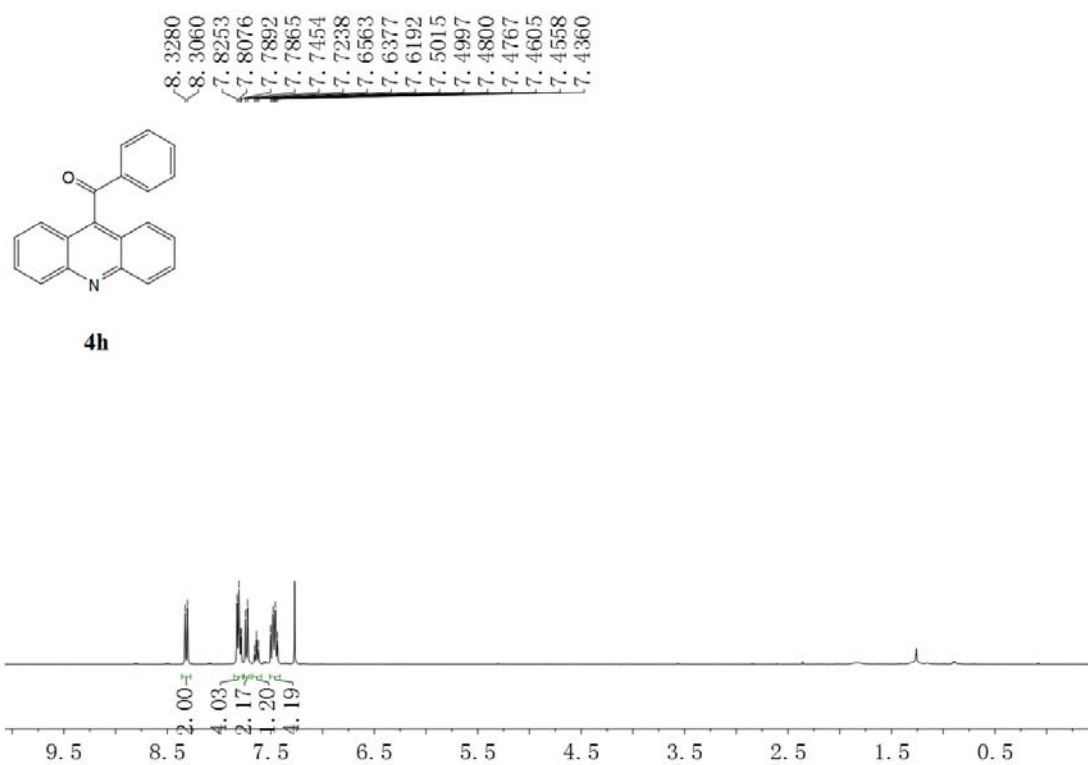
-196.5645  
-158.4985  
-148.5272  
-144.9853  
-136.9366  
-134.3641  
-130.4965  
-130.2163  
-129.4402  
-128.9980  
-126.9021  
-125.4013  
-123.5119  
-120.6079

-25.6493

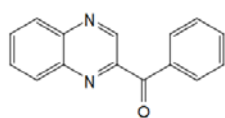


4g

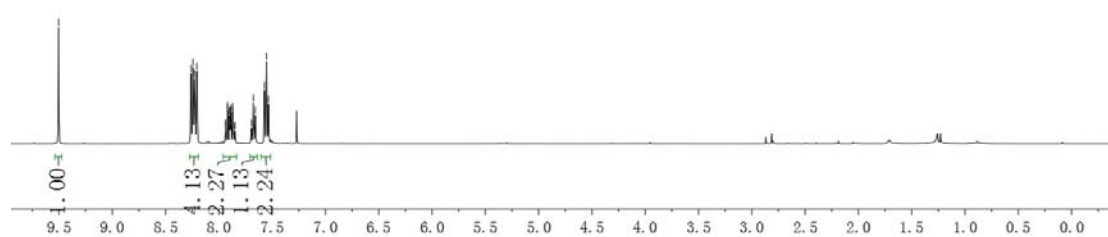




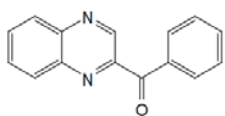
9.5037  
 8.2609  
 8.2430  
 8.2397  
 8.2275  
 8.2066  
 8.2033  
 7.9387  
 7.9351  
 7.9214  
 7.9176  
 7.9014  
 7.8969  
 7.8908  
 7.8865  
 7.8899  
 7.8865  
 7.8824  
 7.8491  
 7.6950  
 7.6764  
 7.6579  
 7.5725  
 7.5529  
 7.5341



4i



192.5335  
 148.8748  
 145.5121  
 143.3935  
 140.6573  
 135.7498  
 133.8360  
 132.2174  
 131.4592  
 131.0072  
 130.6705  
 129.6324  
 128.5927



4i

