

Synthesis of α -Haloenamides via Zinc Halide Mediated Direct

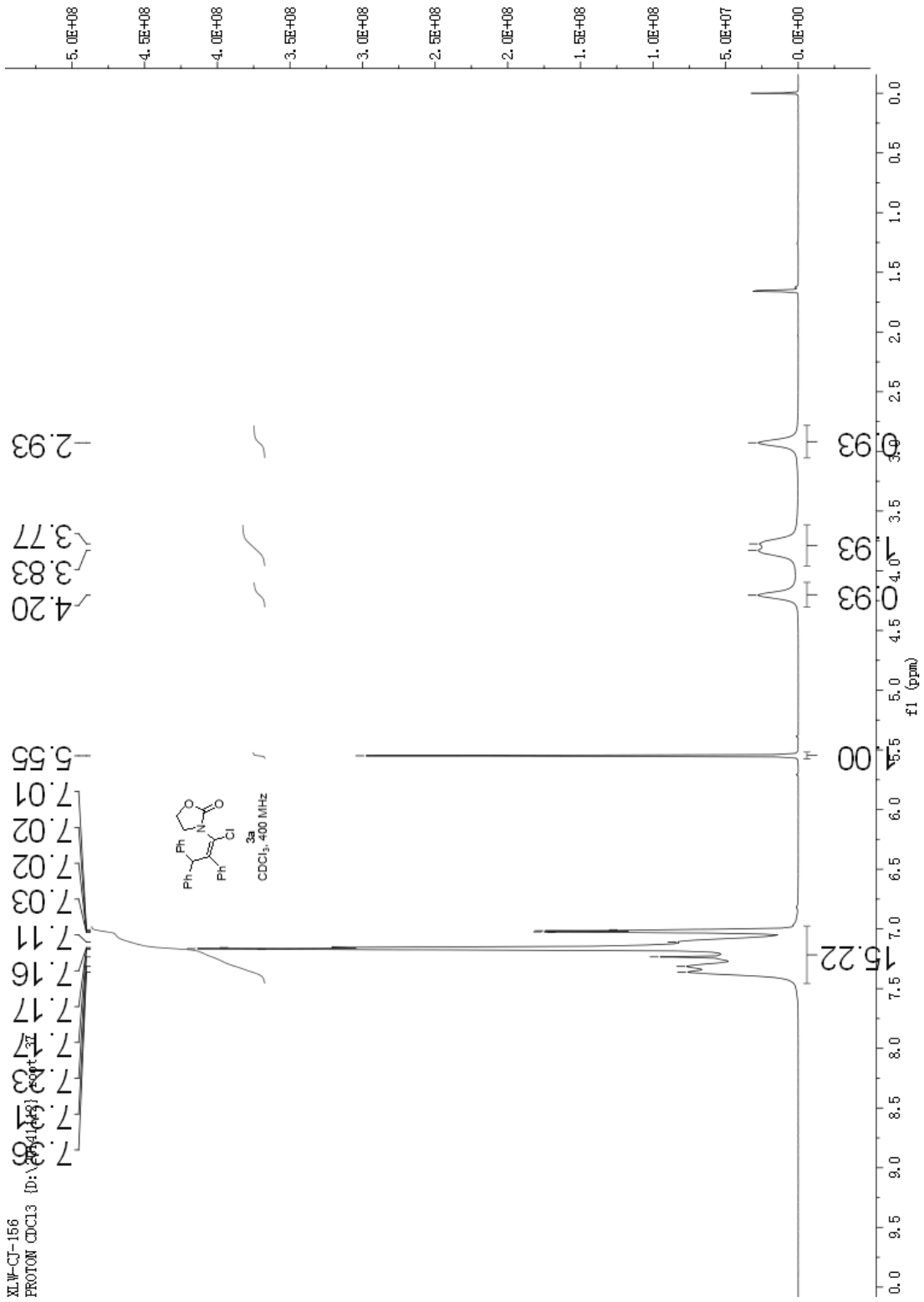
Addition of Benzyl Halides to Ynamides

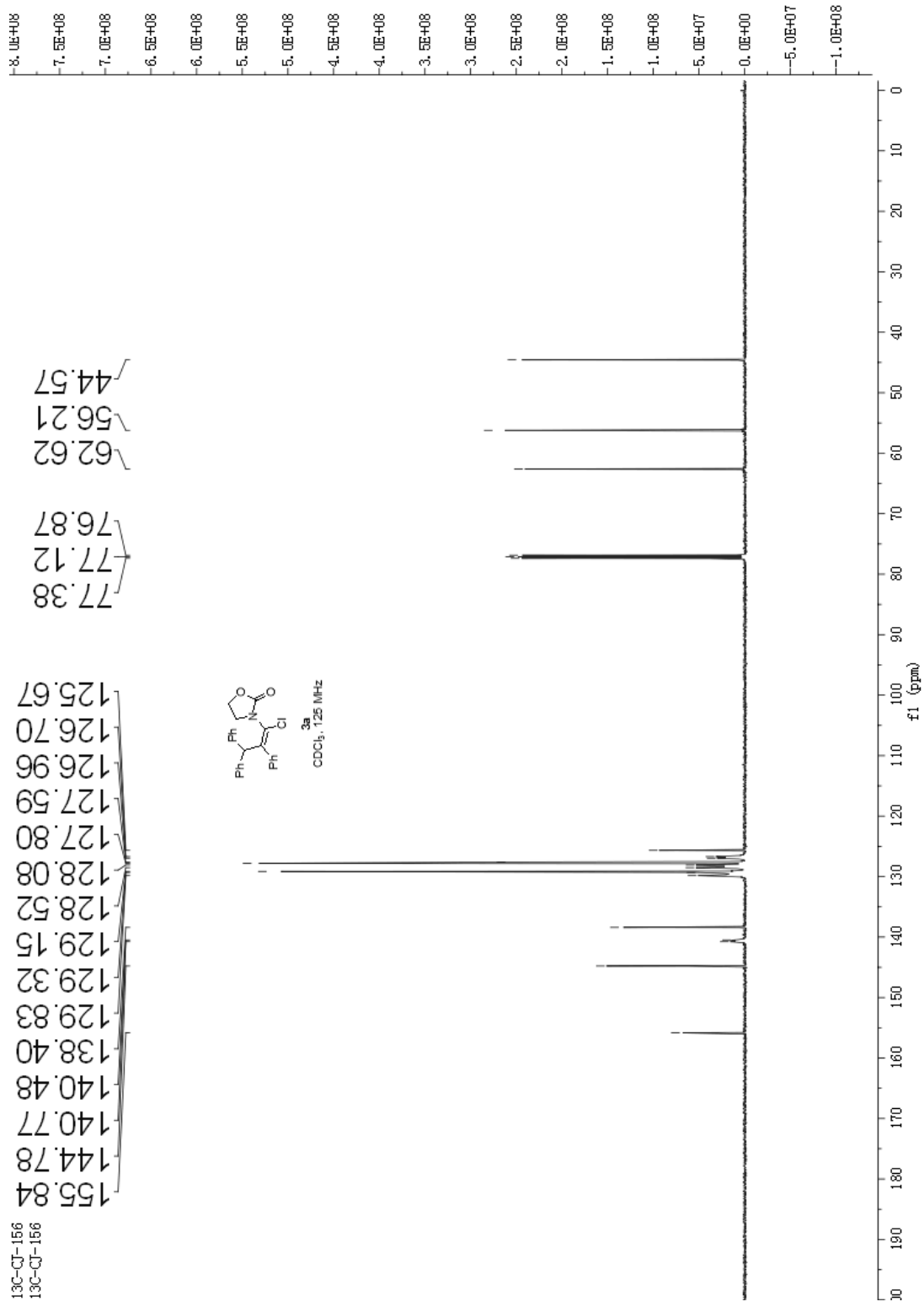
Ling Chen, Lian Yu, Yuan Deng, Yuming Cui, Gaofeng Bian, and Jian Cao*

Key Laboratory of Organosilicon Chemistry and Material Technology of Ministry of Education, Hangzhou Normal University, No 1378, Wenyi West Road, Science Park of HZNU, Hangzhou (P.R. China)

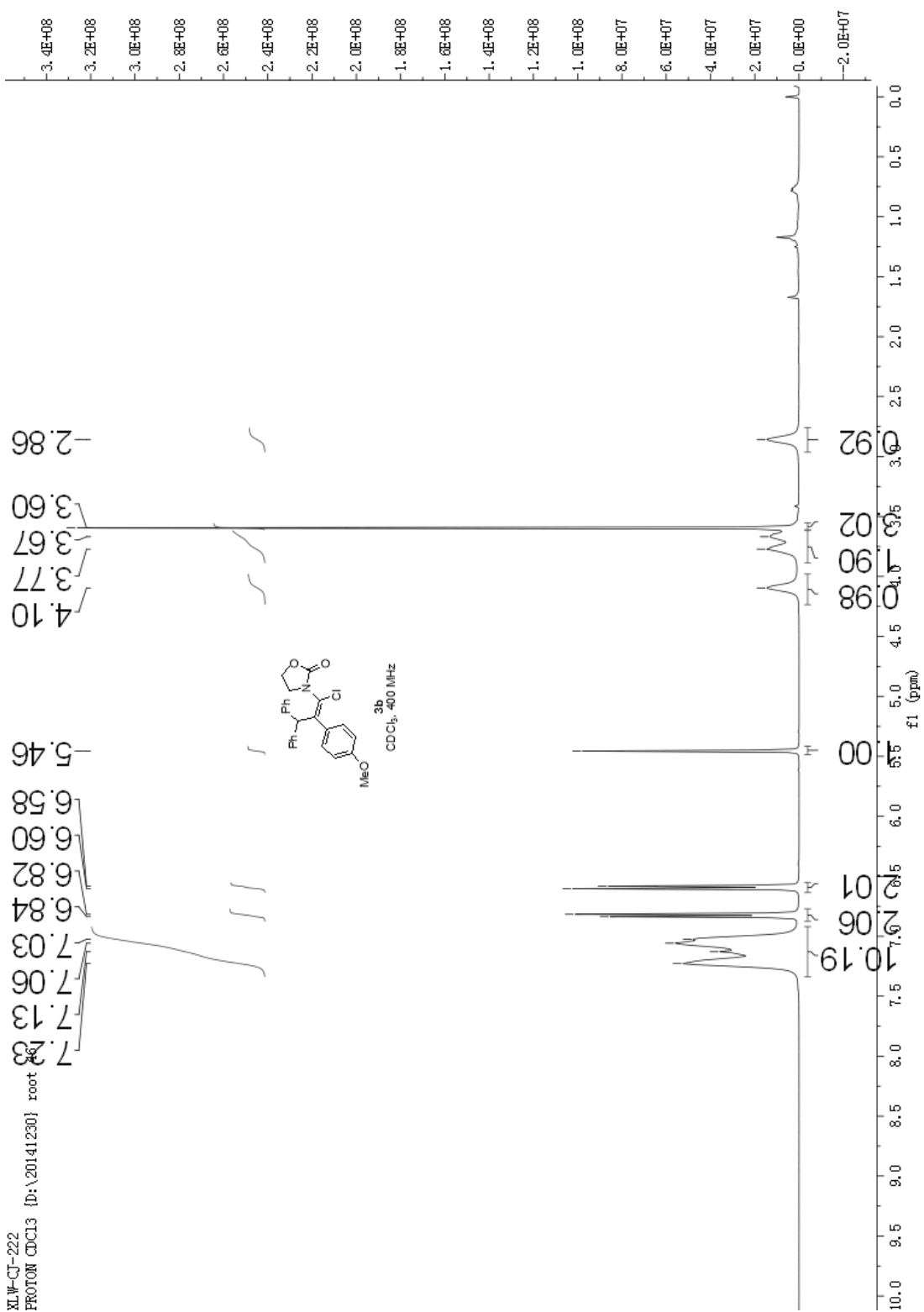
Table of Contents	
NMR spectra of new compounds	S2-S35
ORTEP representation of 3a , 3j' and 3m	S36-37

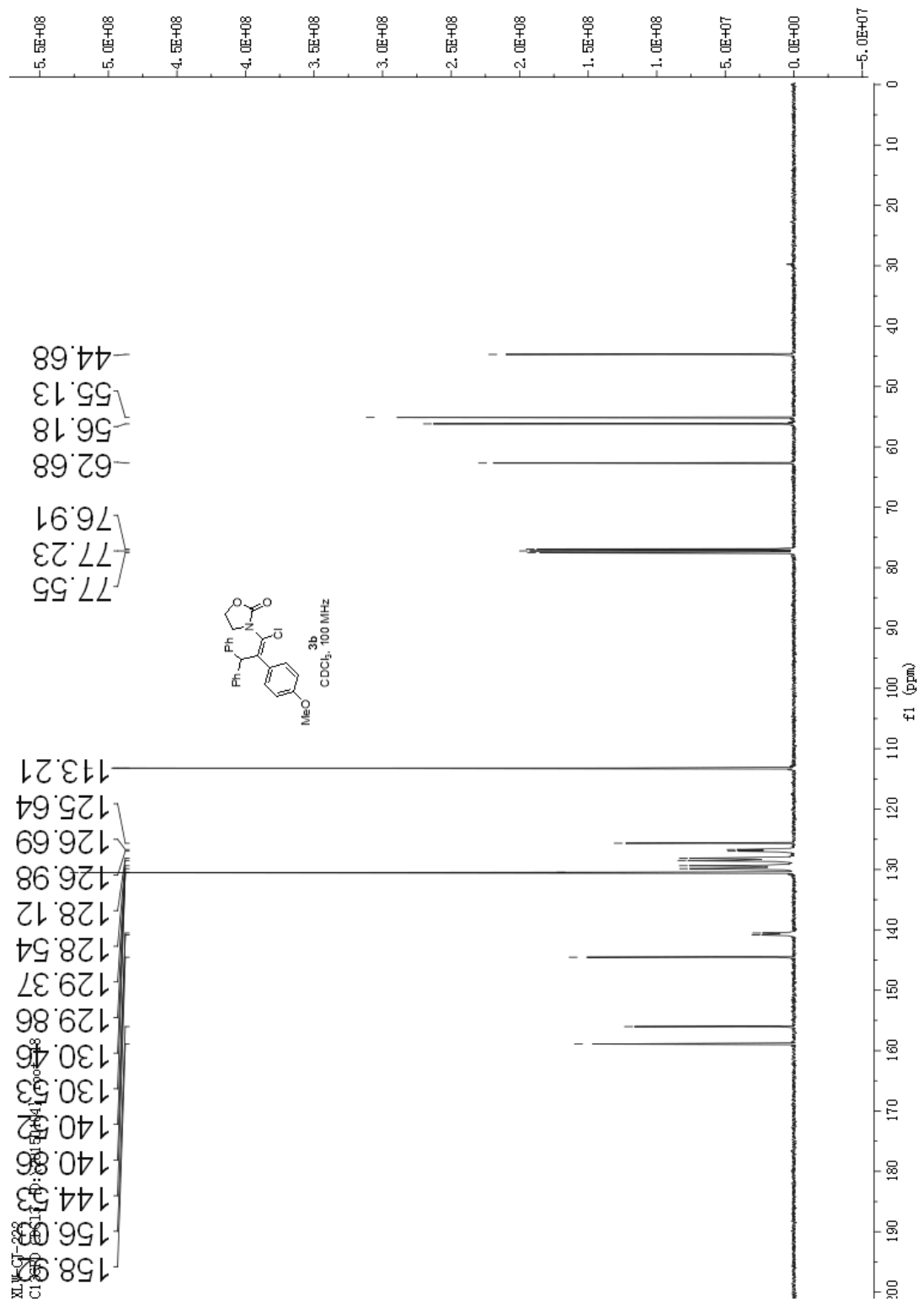
XLW-CJ-156
PROTON CDCl3 ID: V0541693

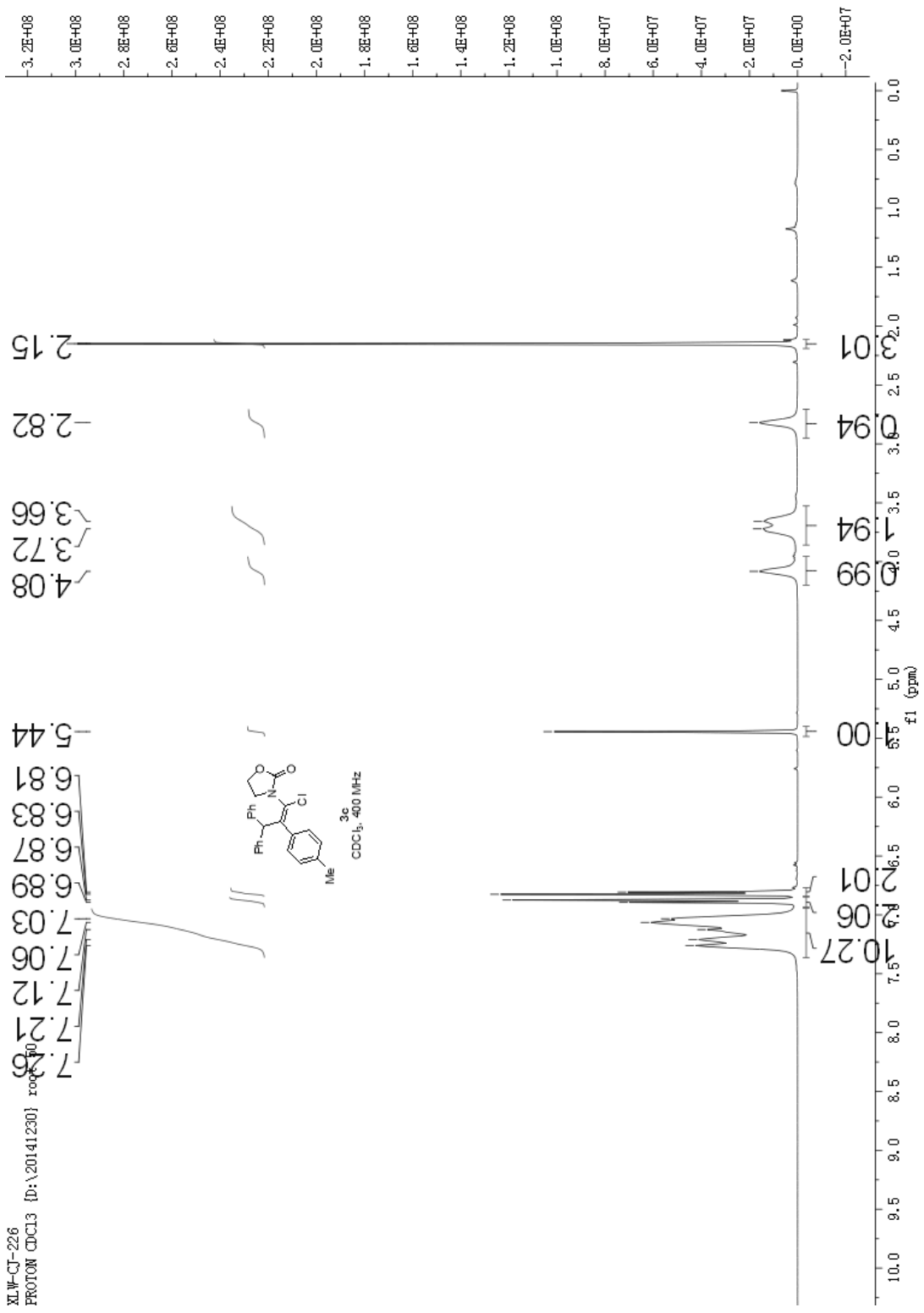




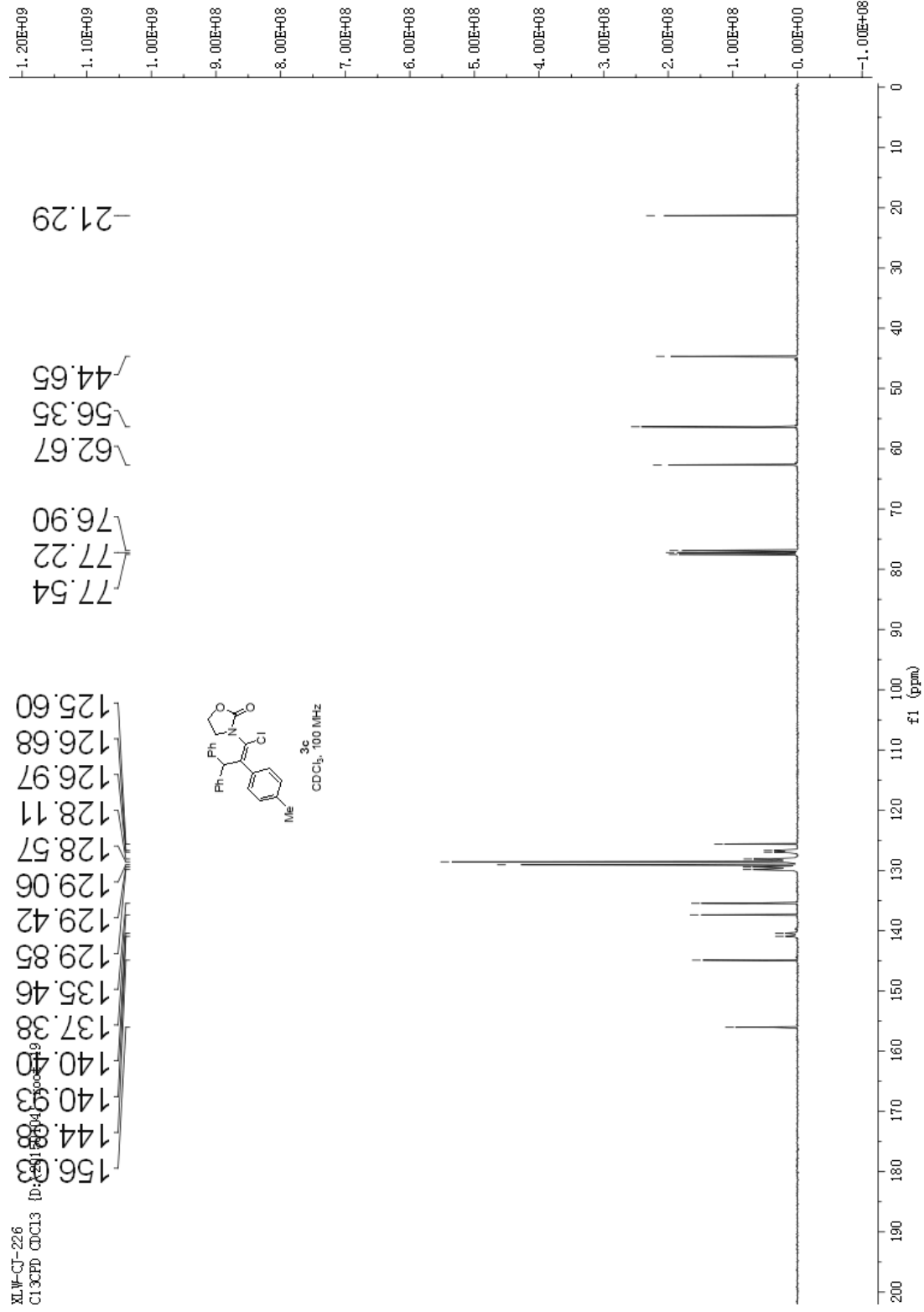
XLW-CJ-222
PROTON CDCl3 (D:\20141230) root



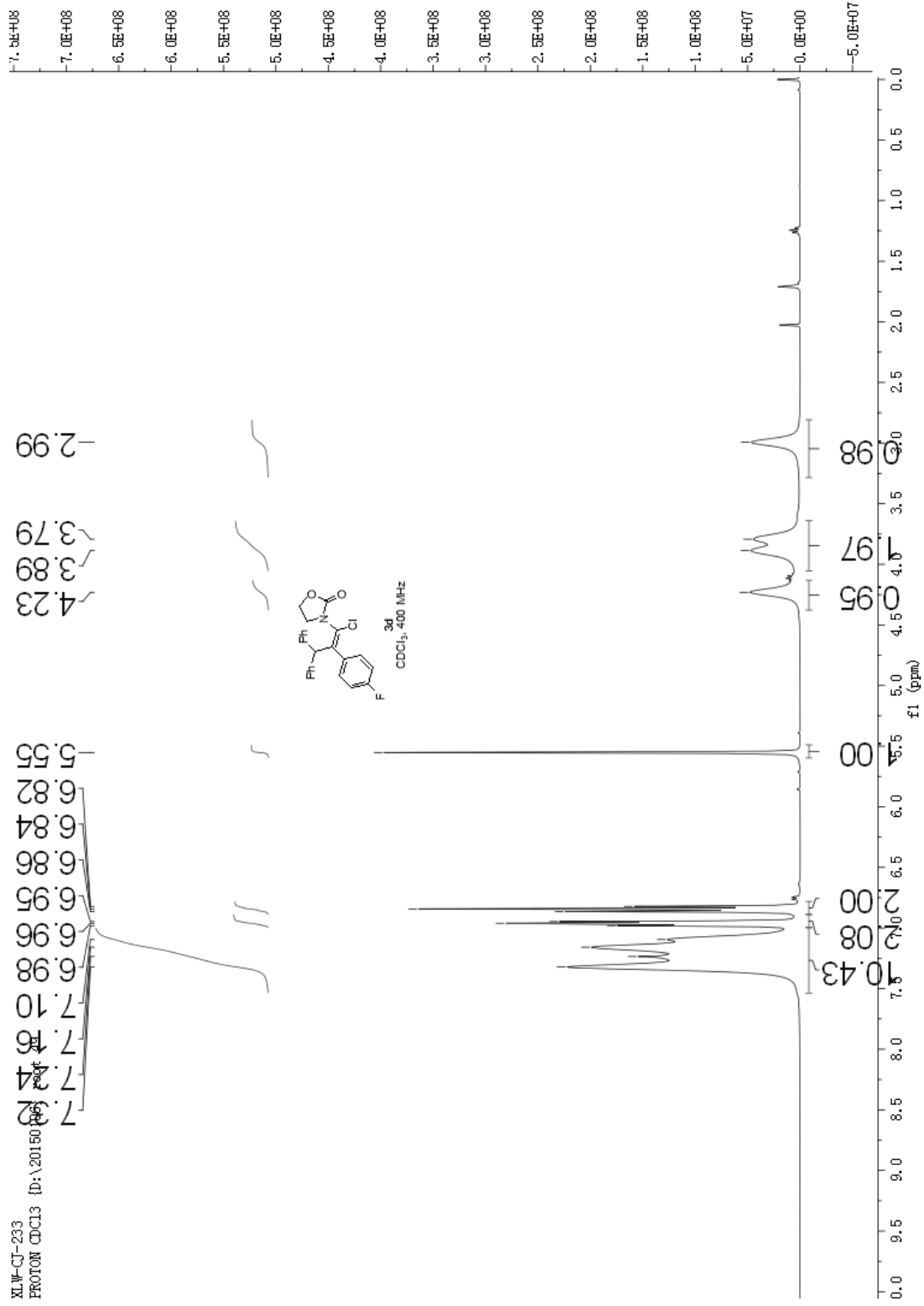




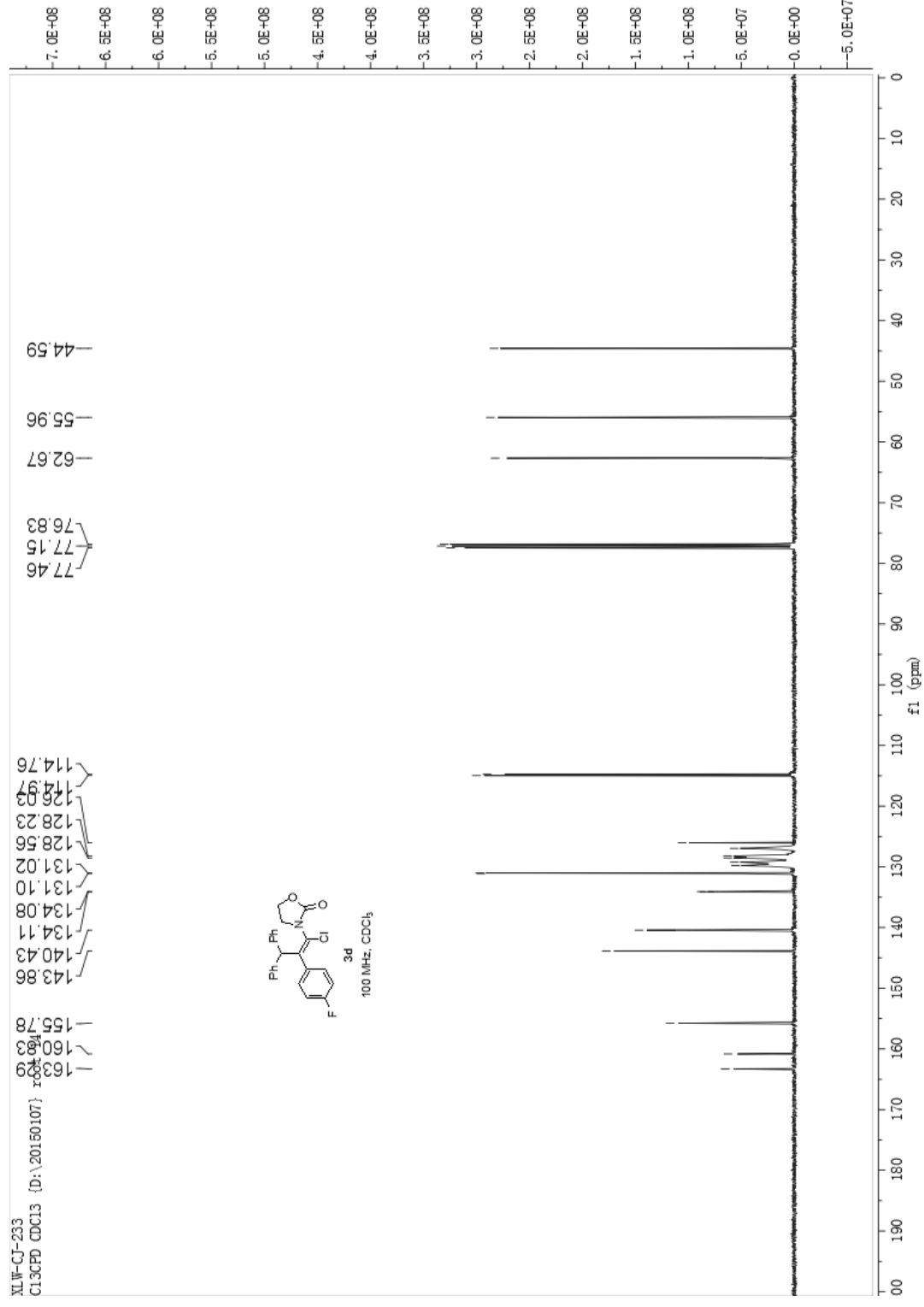
XLW-CJ-226
C13CPD CDCl3 (D: 291189)



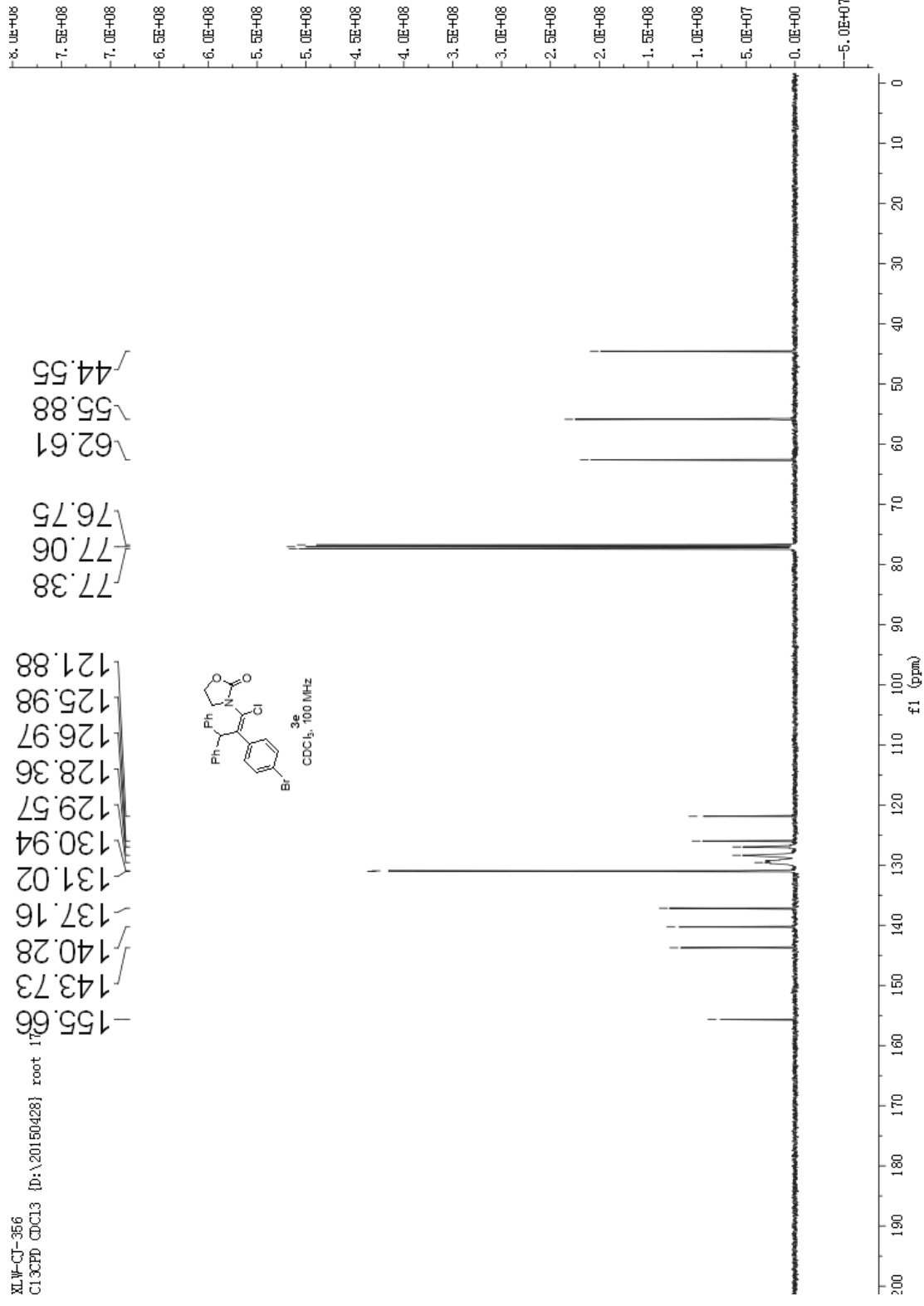
XLW-CJ-233
PROTON CDCL3 (D:\201508)

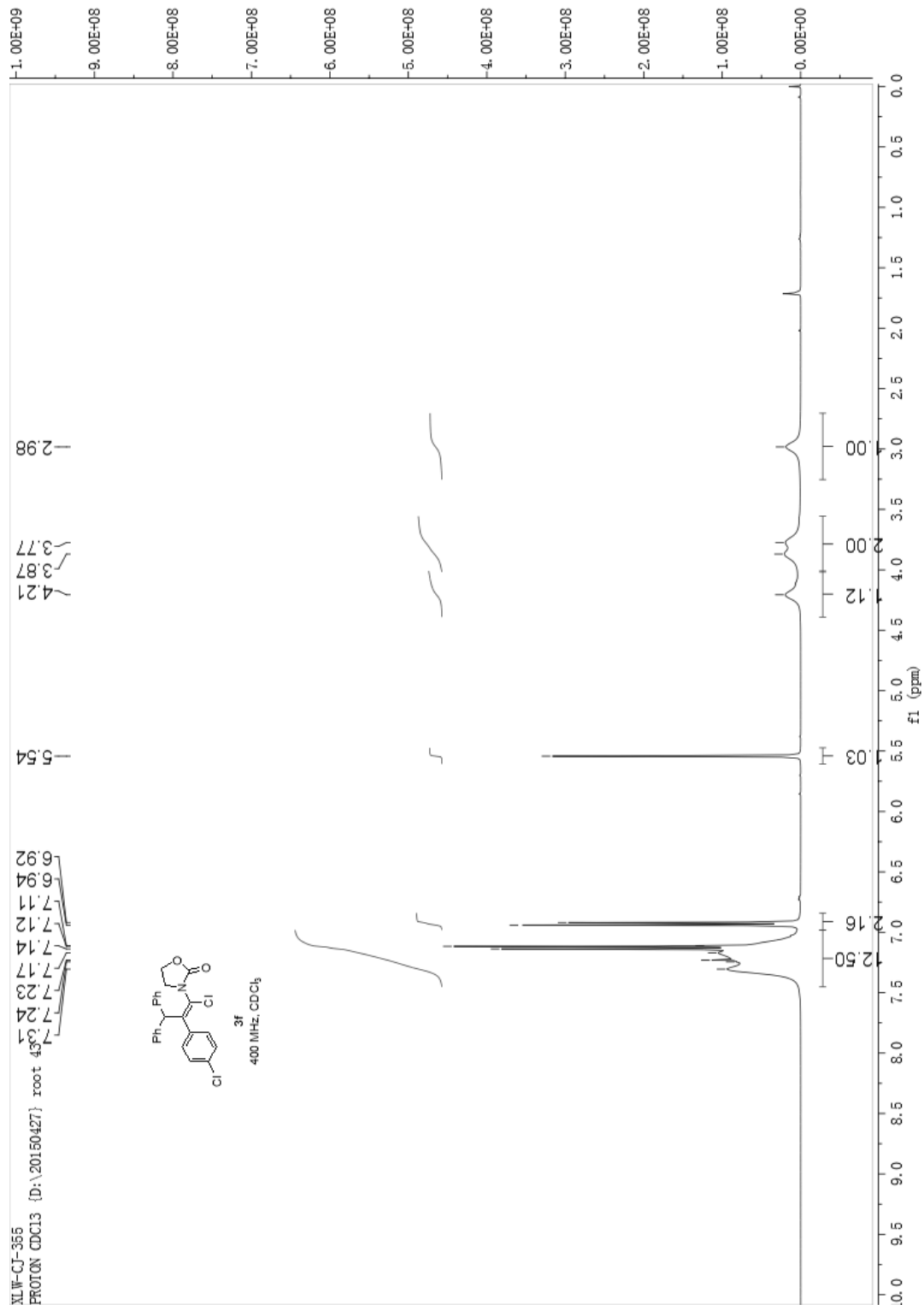


XI.W-CJ-233
C13CPD CDCl3 (D:\20150107)



XLW-CJ-356
C13CFD CDCl3 [D:\20150428] root 17

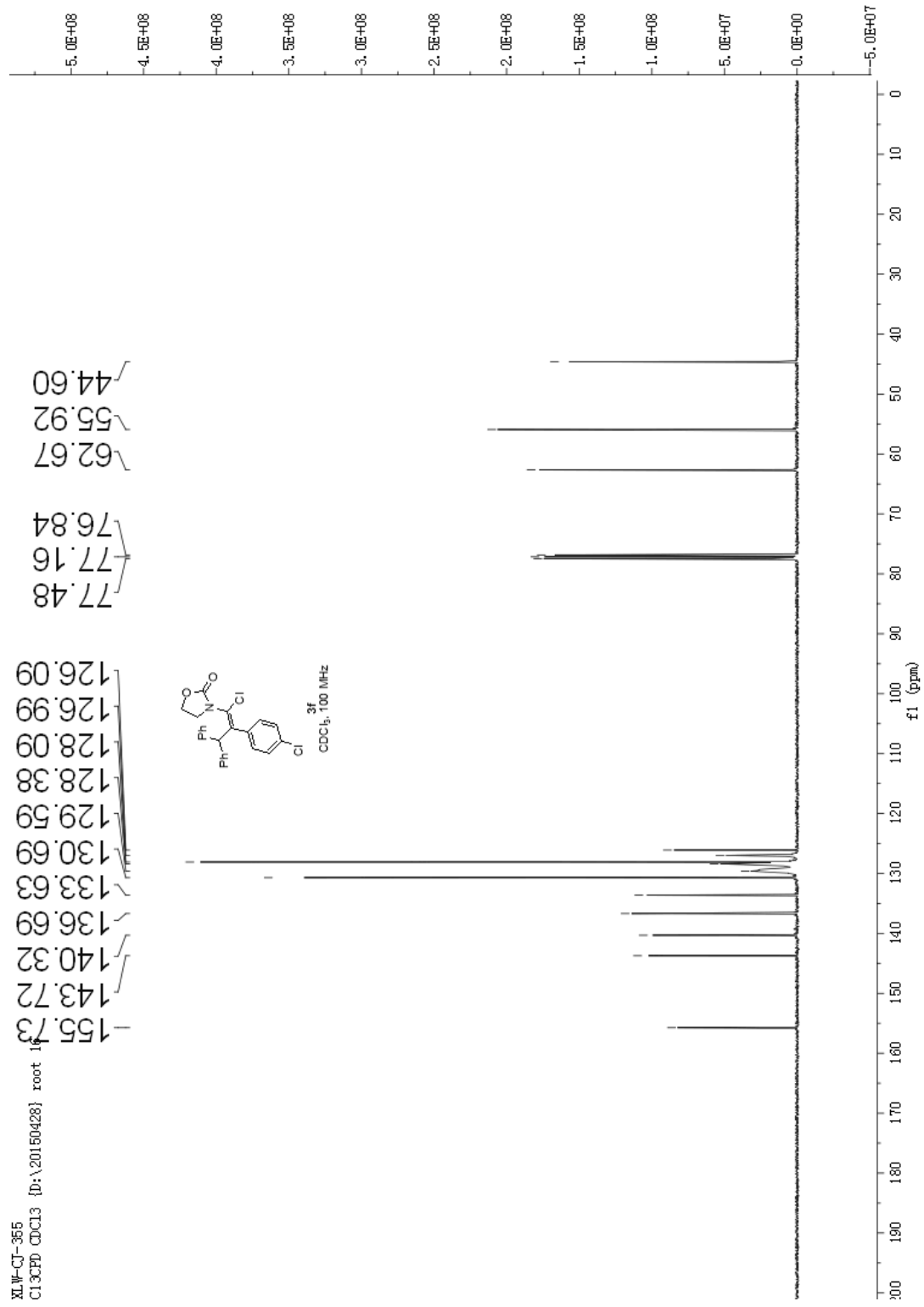


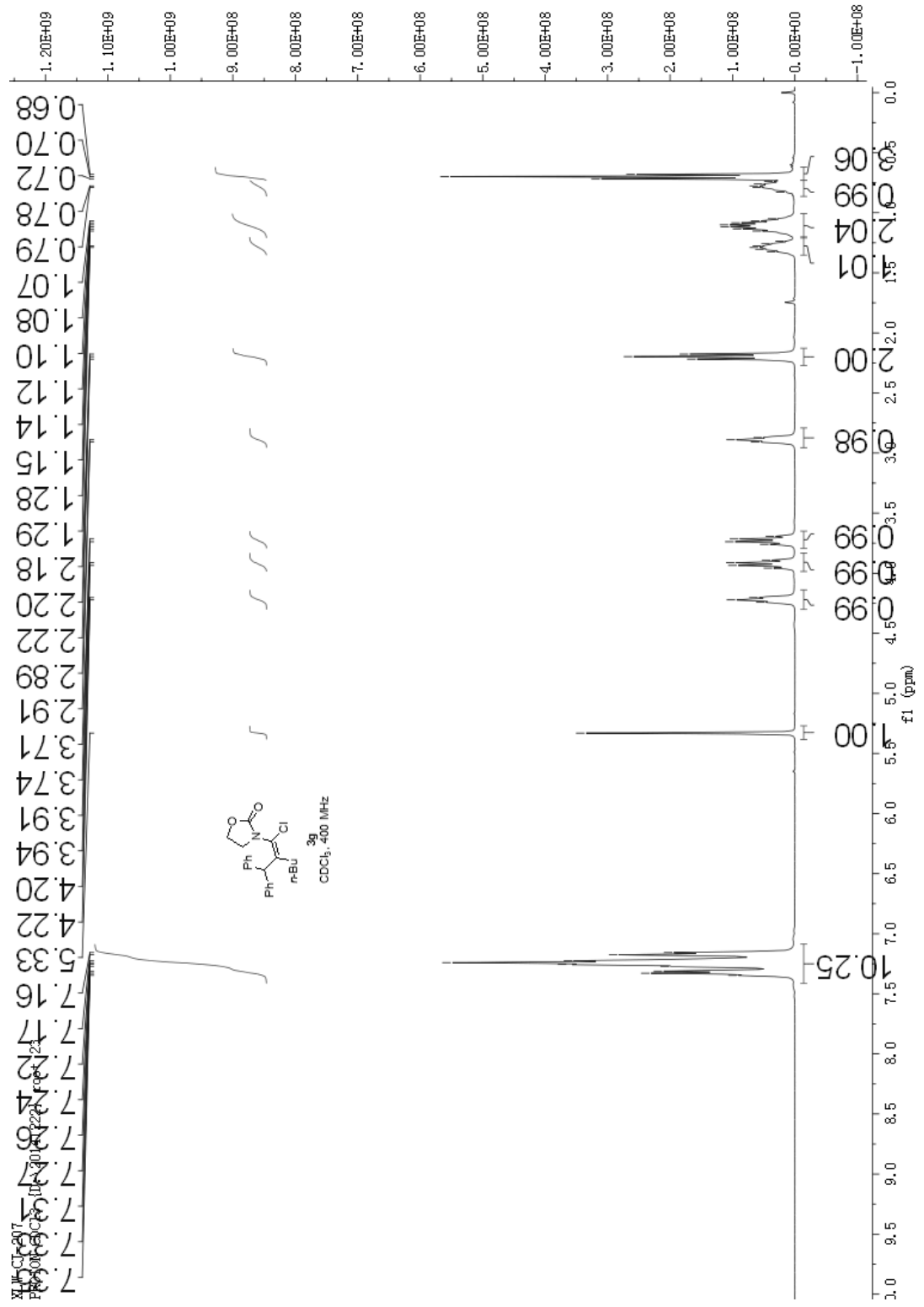


XLW-CJ-365
C13CPD CDCl3

root 1

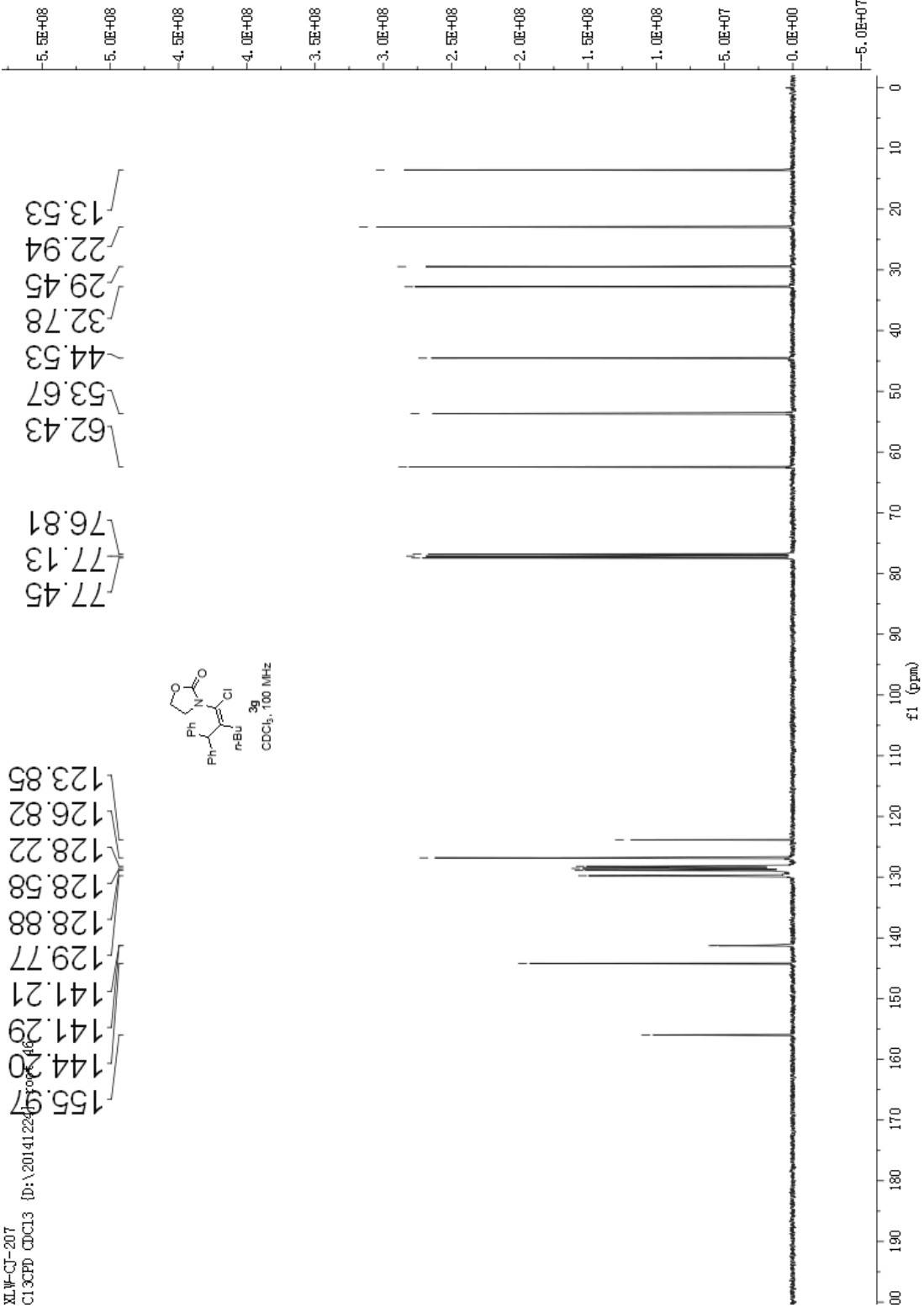
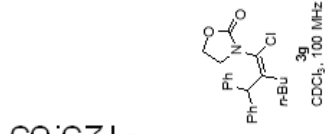
{D:\20150428}





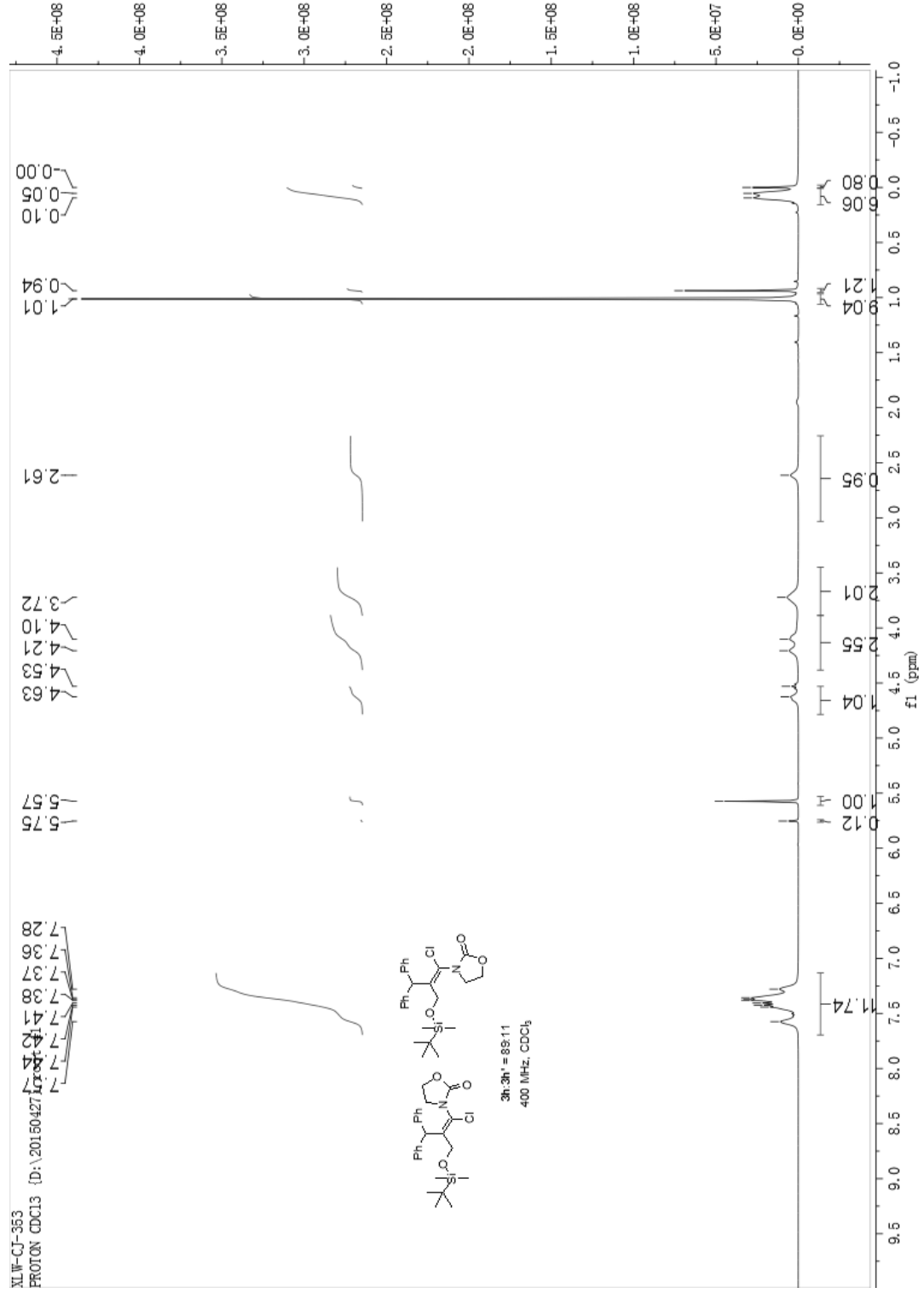
XLW-CJ-2017
C13CPD CDCl3

ID:\20141224\5000146



XLW-CJ-353

PROTON CDC13 (D:\20150427)



XI.W-CJ-353

C13CPD CDC13 (D:\20150428) root

155.52
142.76
141.82
141.28
129.56
129.42
128.34
126.70
126.63
125.63

77.47
77.15
76.83

62.59
61.92

52.51

44.10

25.90

18.28

5.67
5.80

8.0E+08

7.5E+08

7.0E+08

6.5E+08

6.0E+08

5.5E+08

5.0E+08

4.5E+08

4.0E+08

3.5E+08

3.0E+08

2.5E+08

2.0E+08

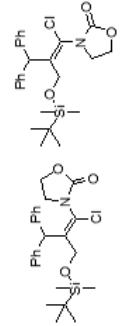
1.5E+08

1.0E+08

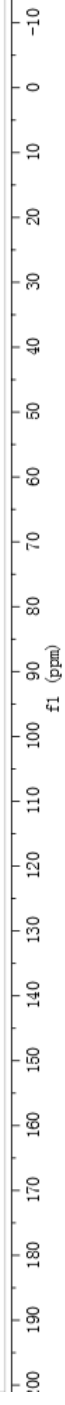
5.0E+07

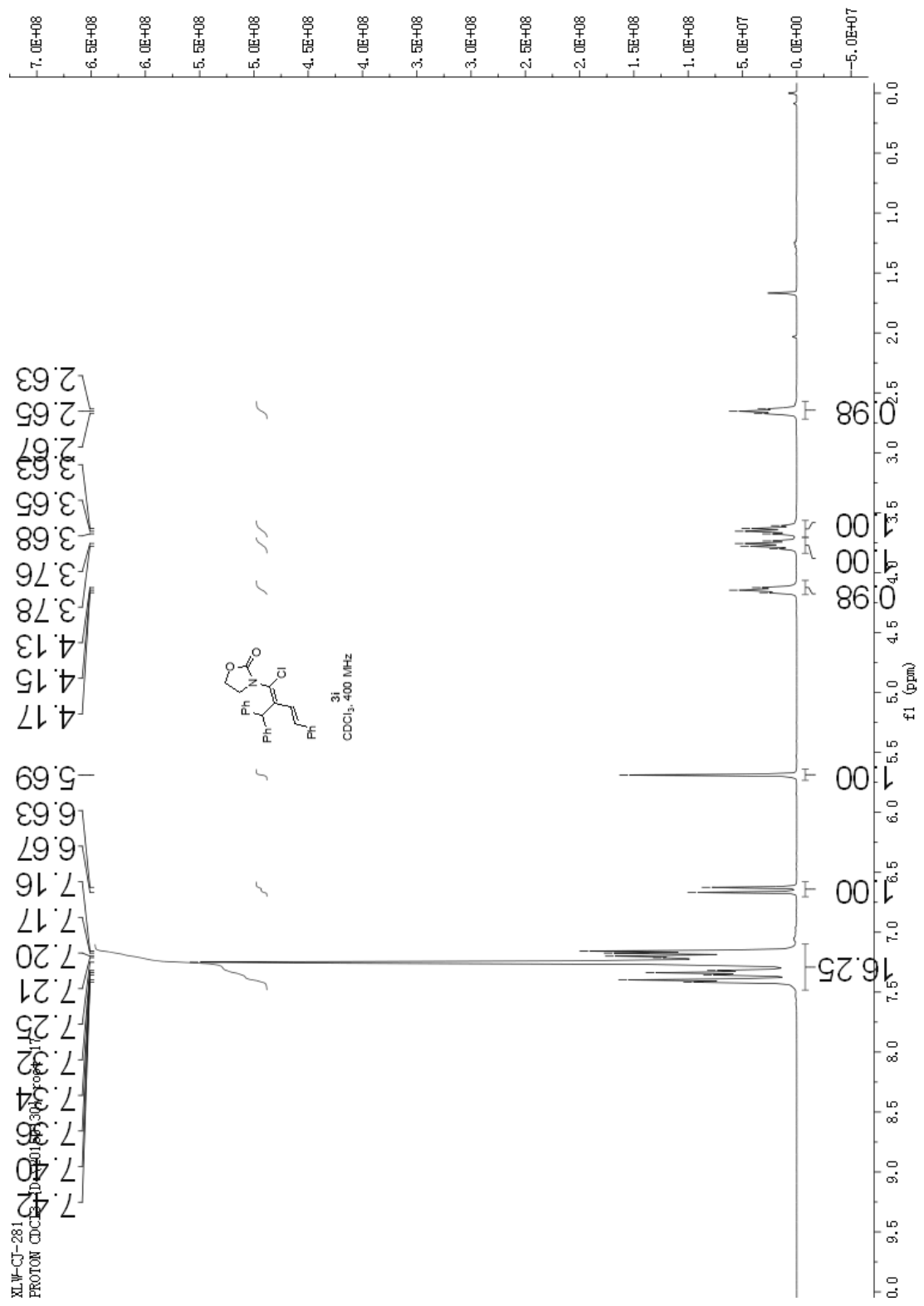
0.0E+00

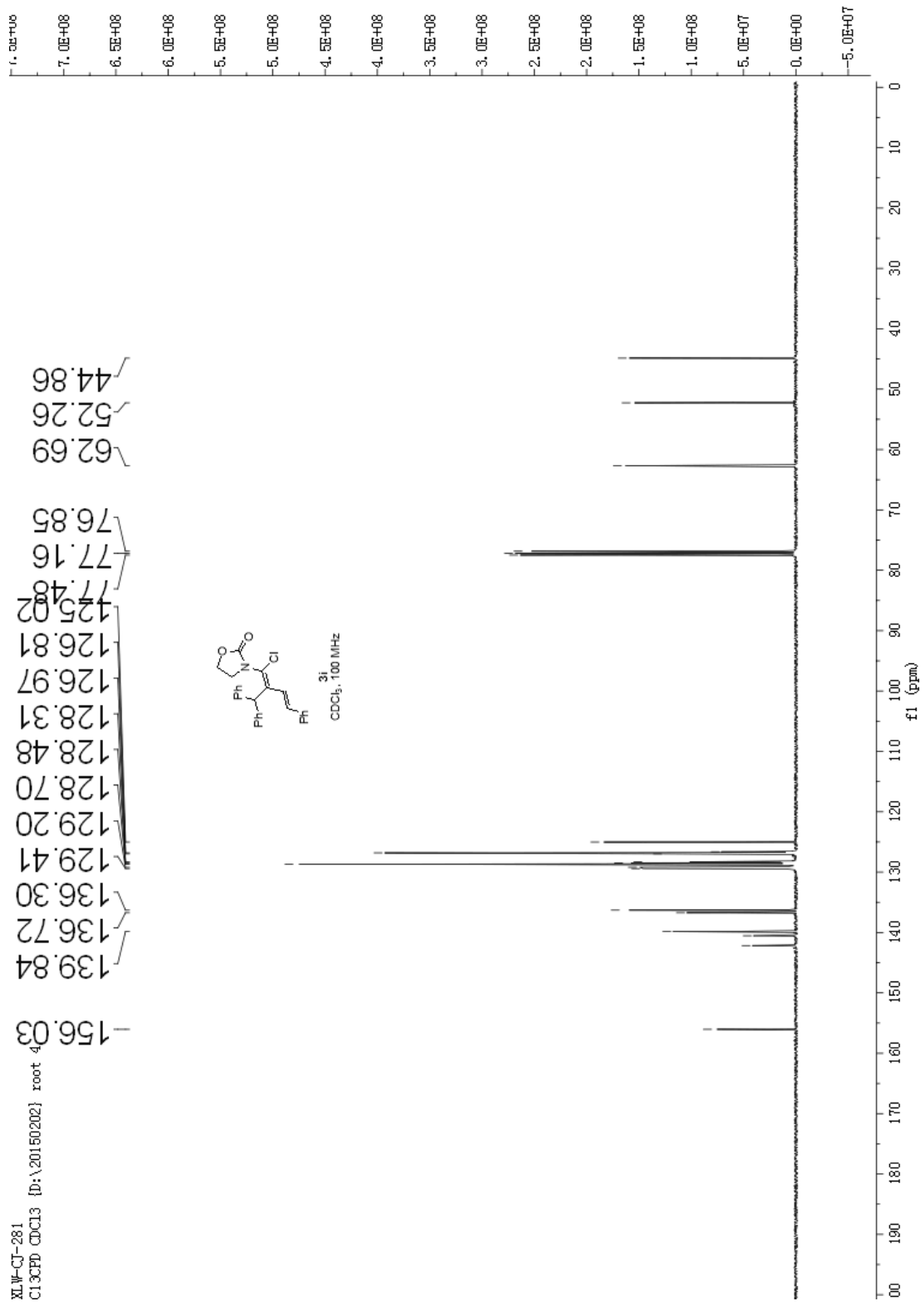
-5.0E-07

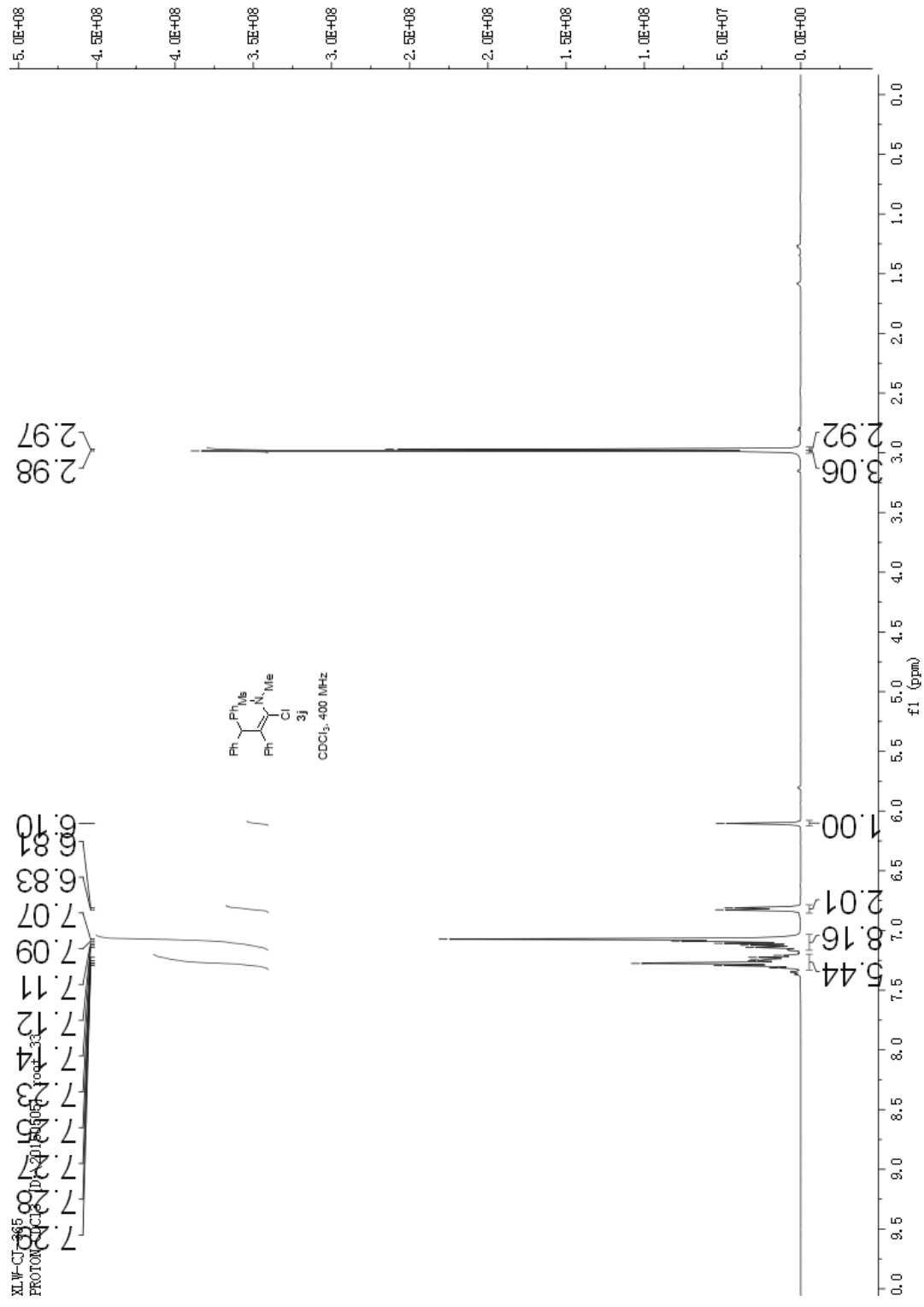


3H, 3H' = 89:11
100 MHz, CDCl₃



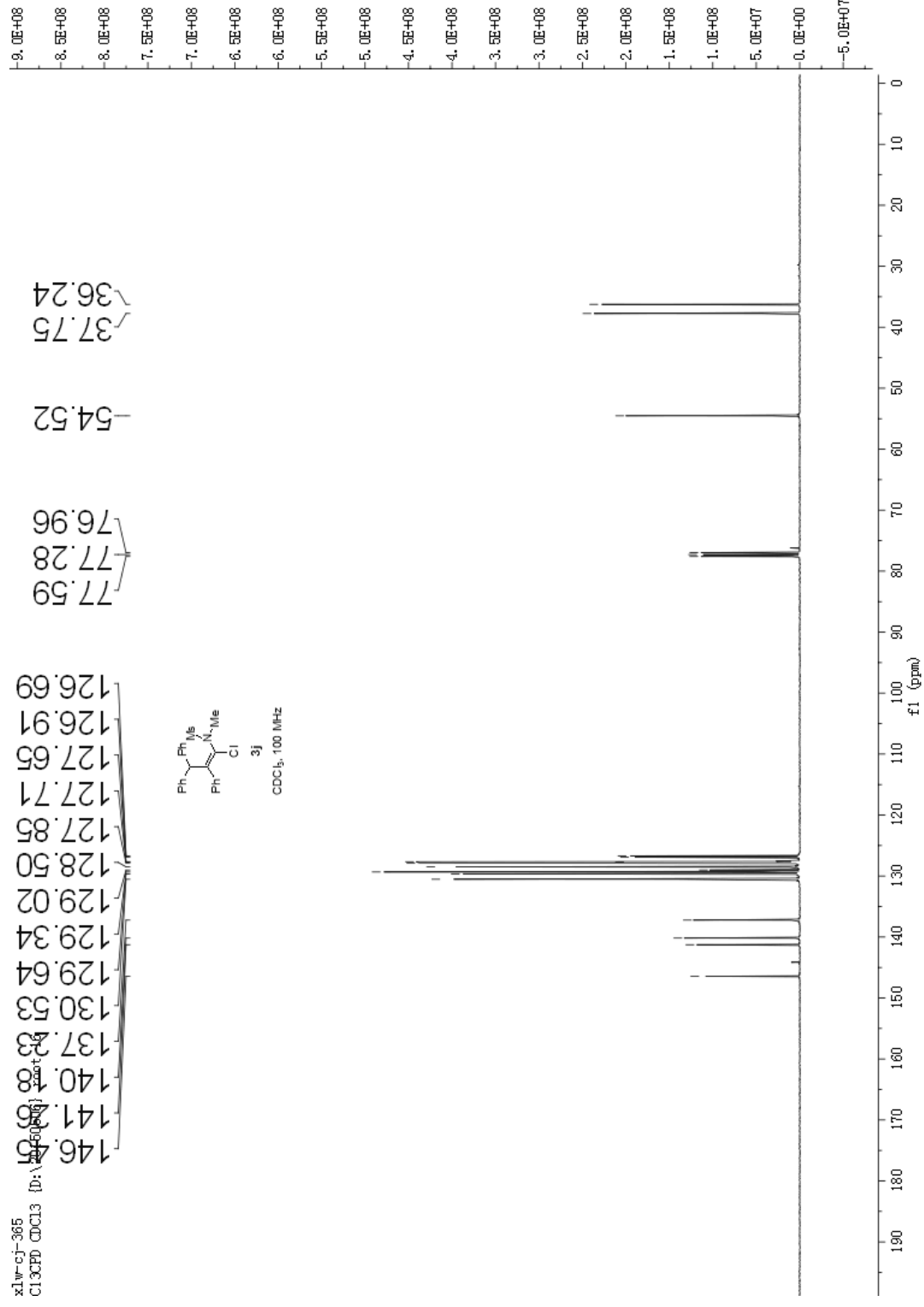




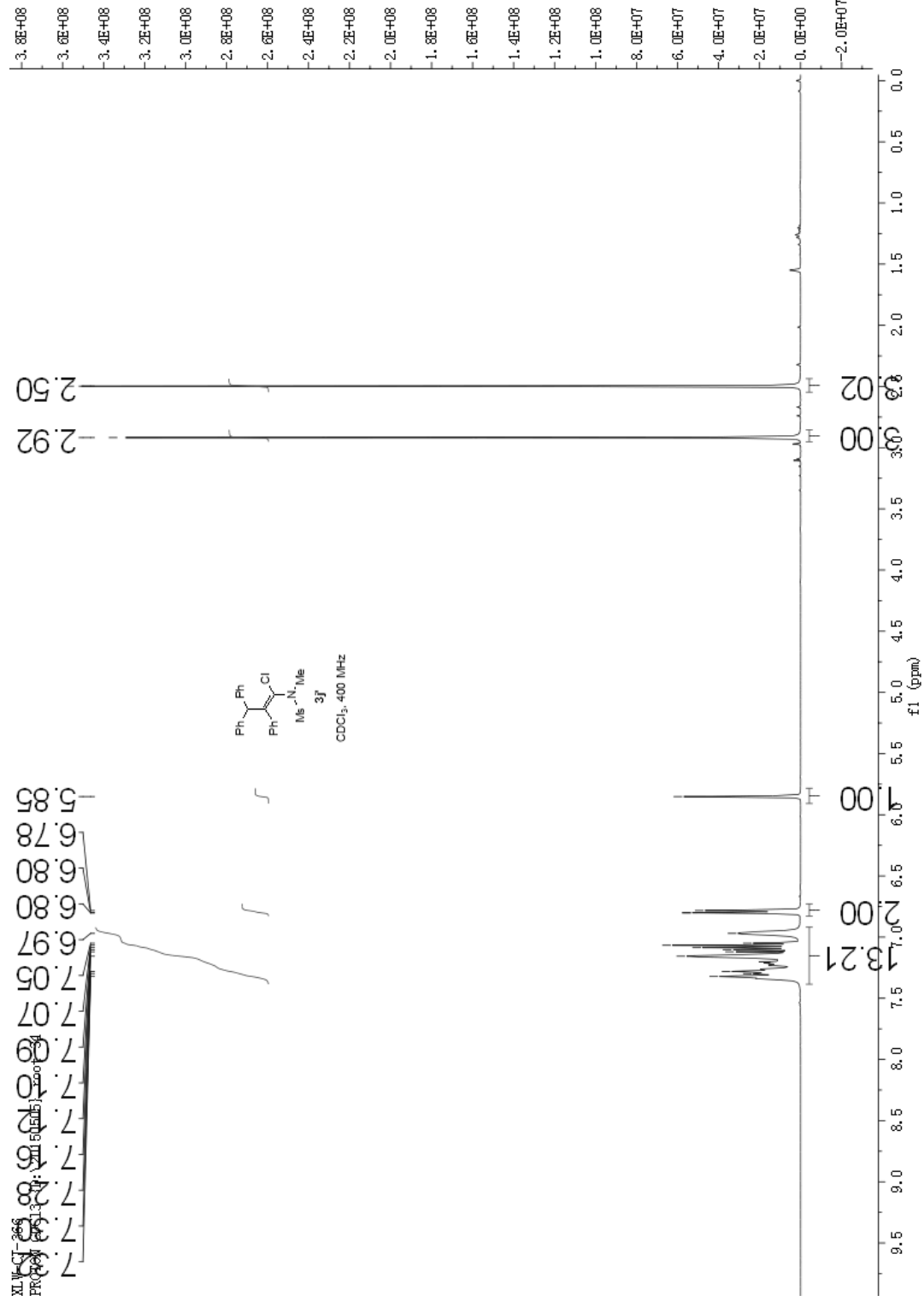


XLW-CJ-185
 PROTON NMR (CDCl₃)

x1w-cj-365
C13CPD CDCl3

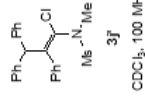
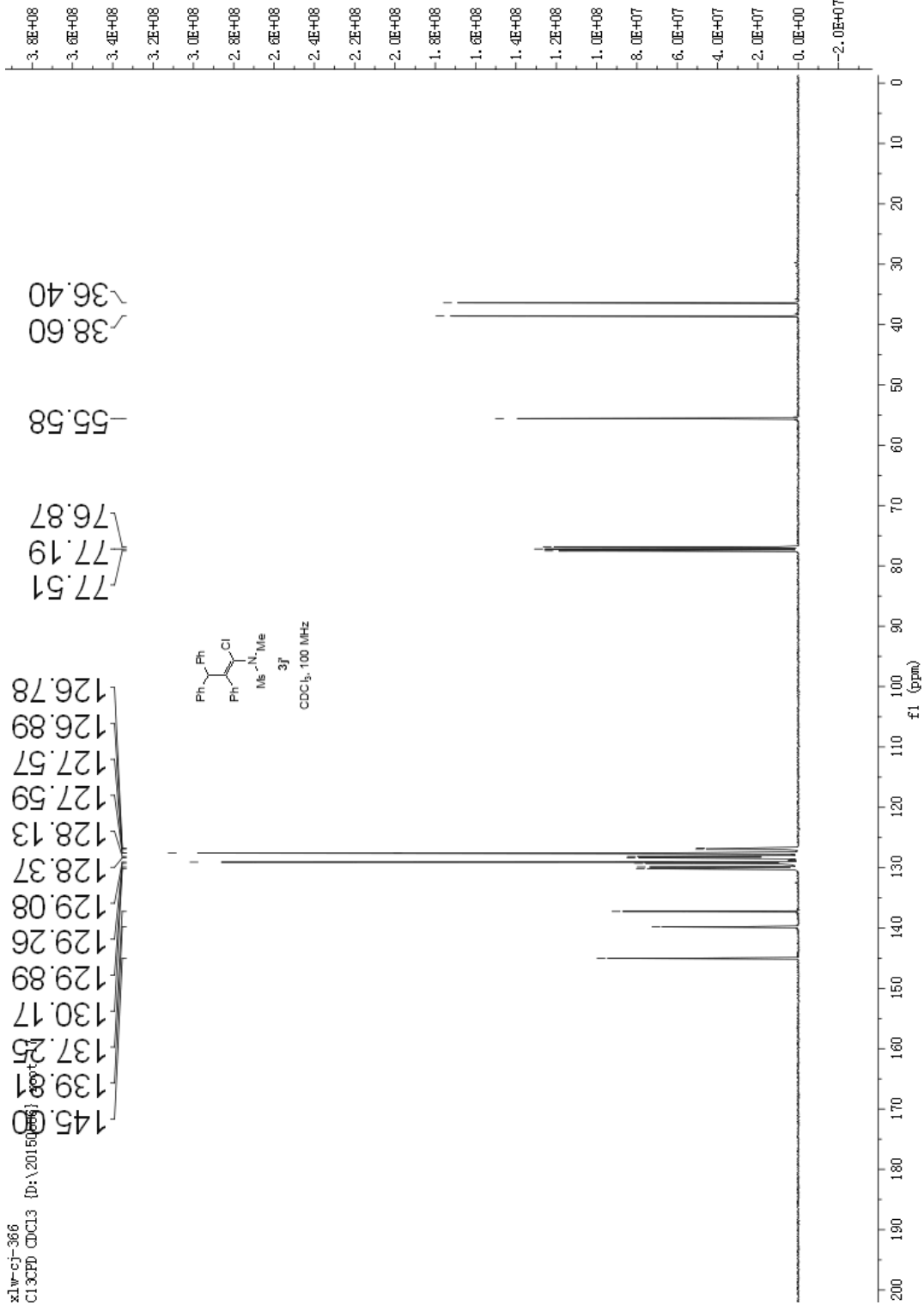


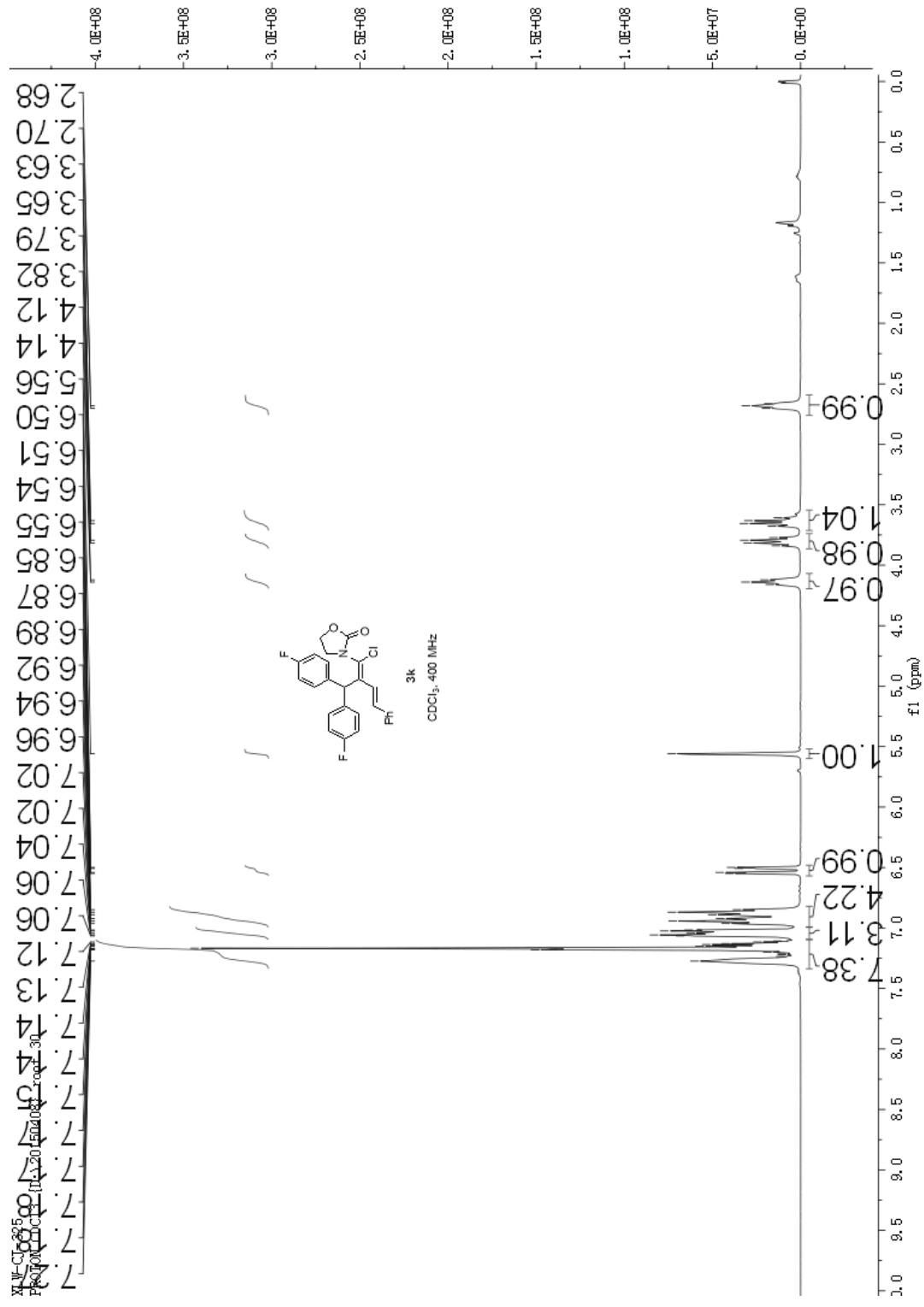
9.0E+08
8.5E+08
8.0E+08
7.5E+08
7.0E+08
6.5E+08
6.0E+08
5.5E+08
5.0E+08
4.5E+08
4.0E+08
3.5E+08
3.0E+08
2.5E+08
2.0E+08
1.5E+08
1.0E+08
5.0E+07
0.0E+00
-5.0E+07



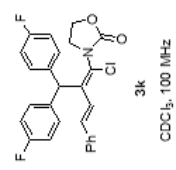
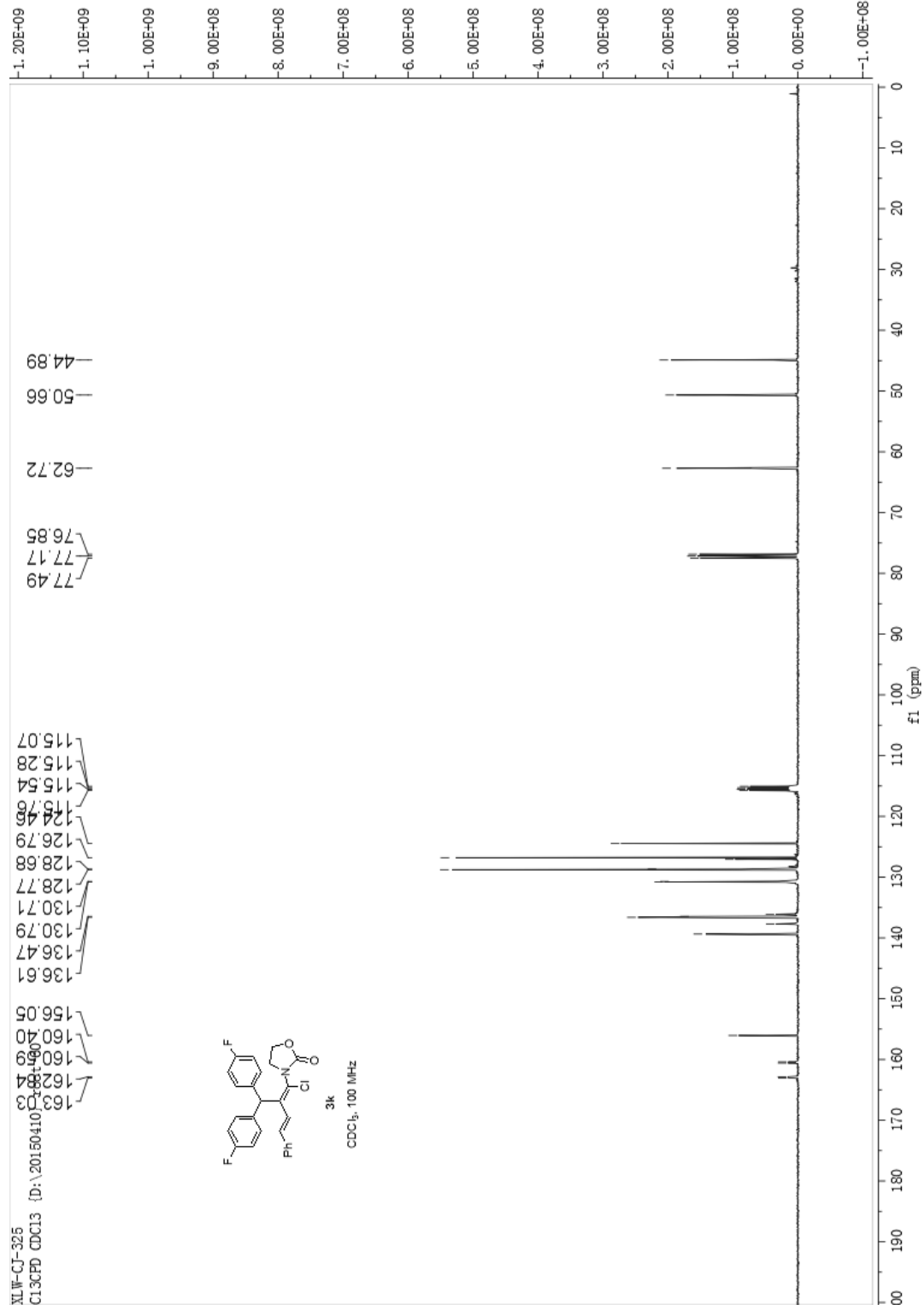
XI W-Cl-266
 PROTON (400 MHz)

xlw-cj-366
C13CPD CDCl3 [D: \20150809]

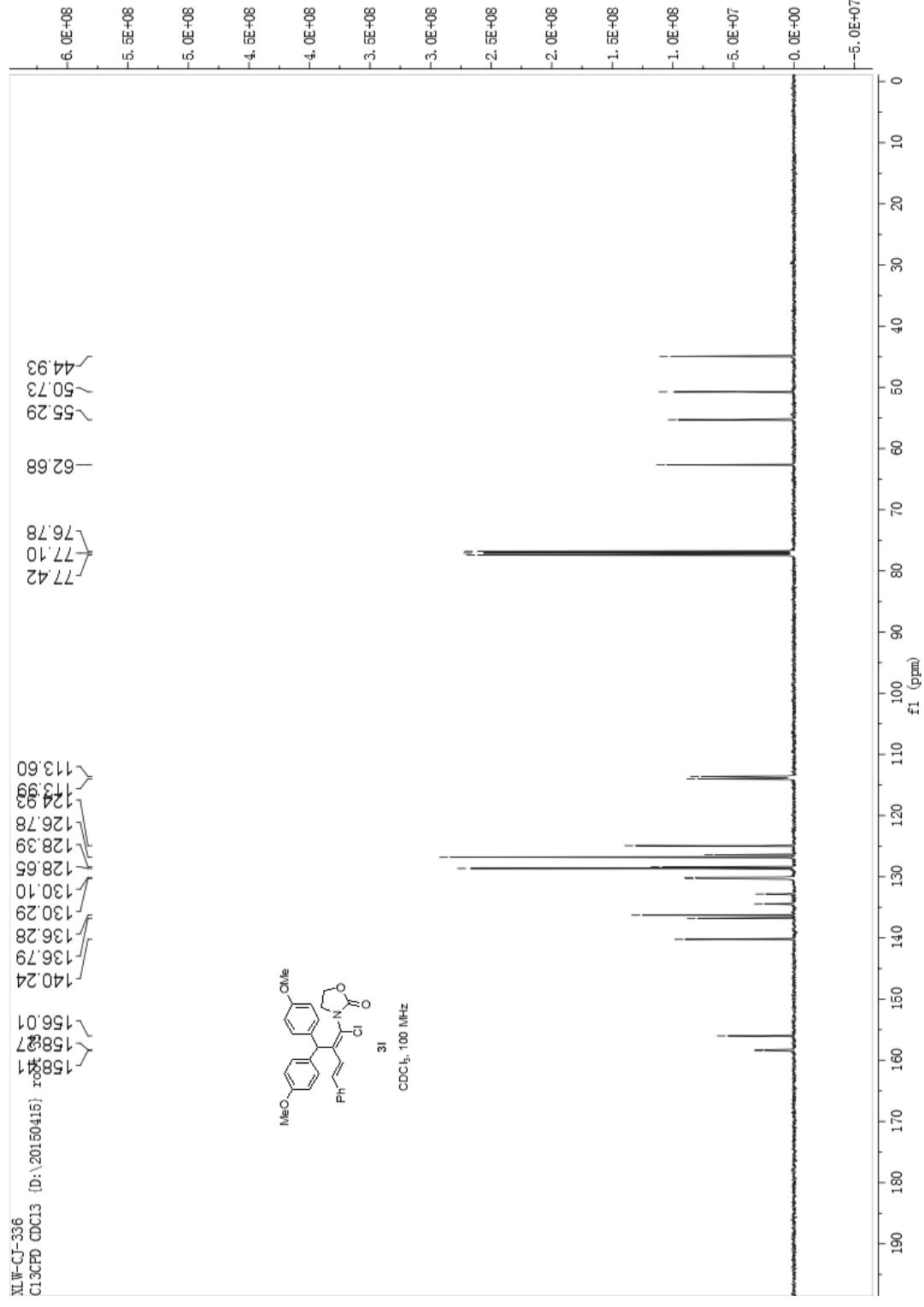


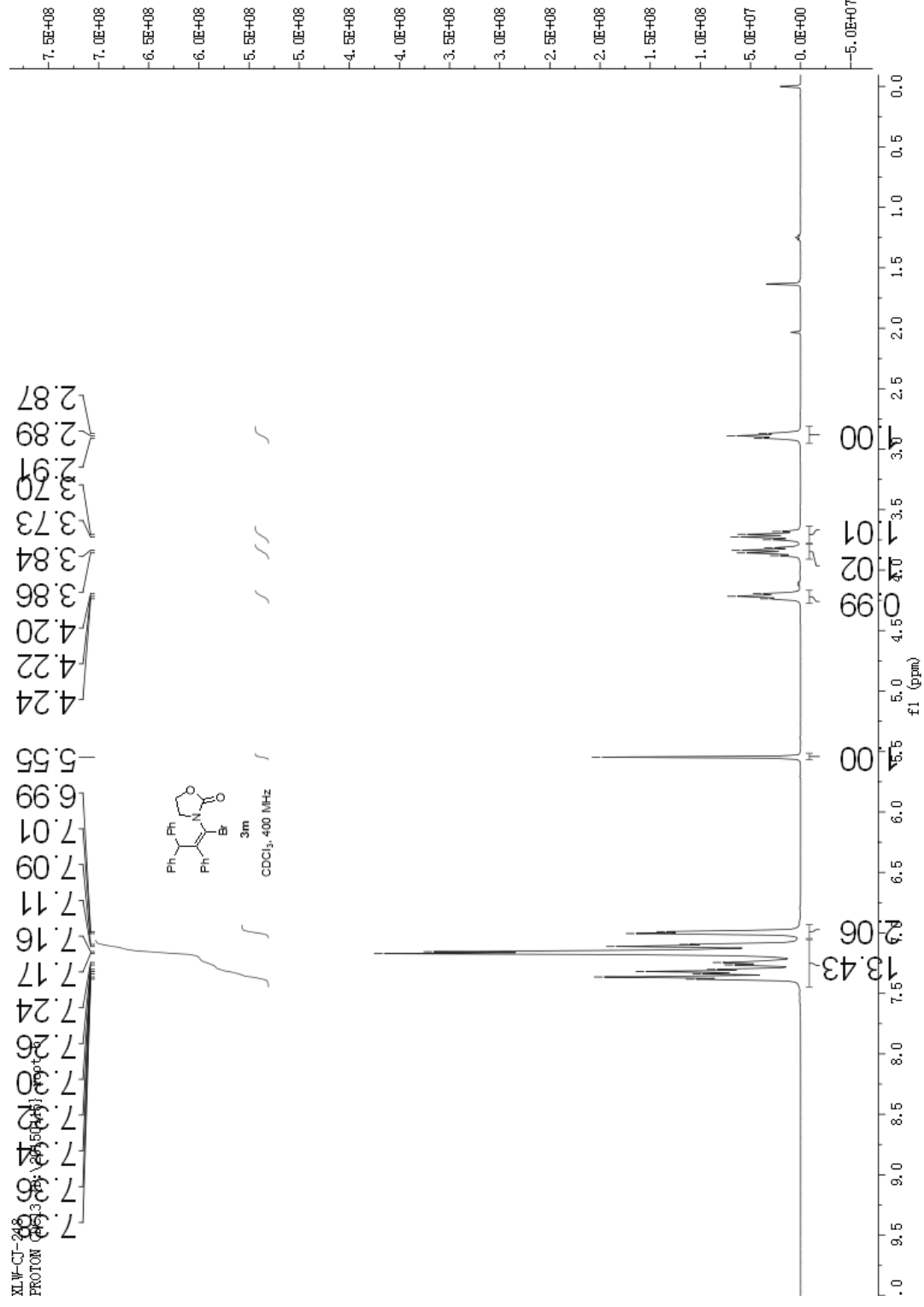


XI.W-CJ-325
C13CPD CDCl3 (D:\20150410



XI.W-CJ-336
C13CPD CDCl3 (D:\20150415) r8





xjw-cj-248
C13CPD CDCl3

155.74
148.77
140.74
140.70
140.05
129.85
129.34
129.08
128.56
128.08
127.79
127.62
127.03
126.69
118.11

77.43
77.12
76.80
62.54
56.80
45.27

-7.5E+08

-7.0E+08

-6.5E+08

-6.0E+08

-5.5E+08

-5.0E+08

-4.5E+08

-4.0E+08

-3.5E+08

-3.0E+08

-2.5E+08

-2.0E+08

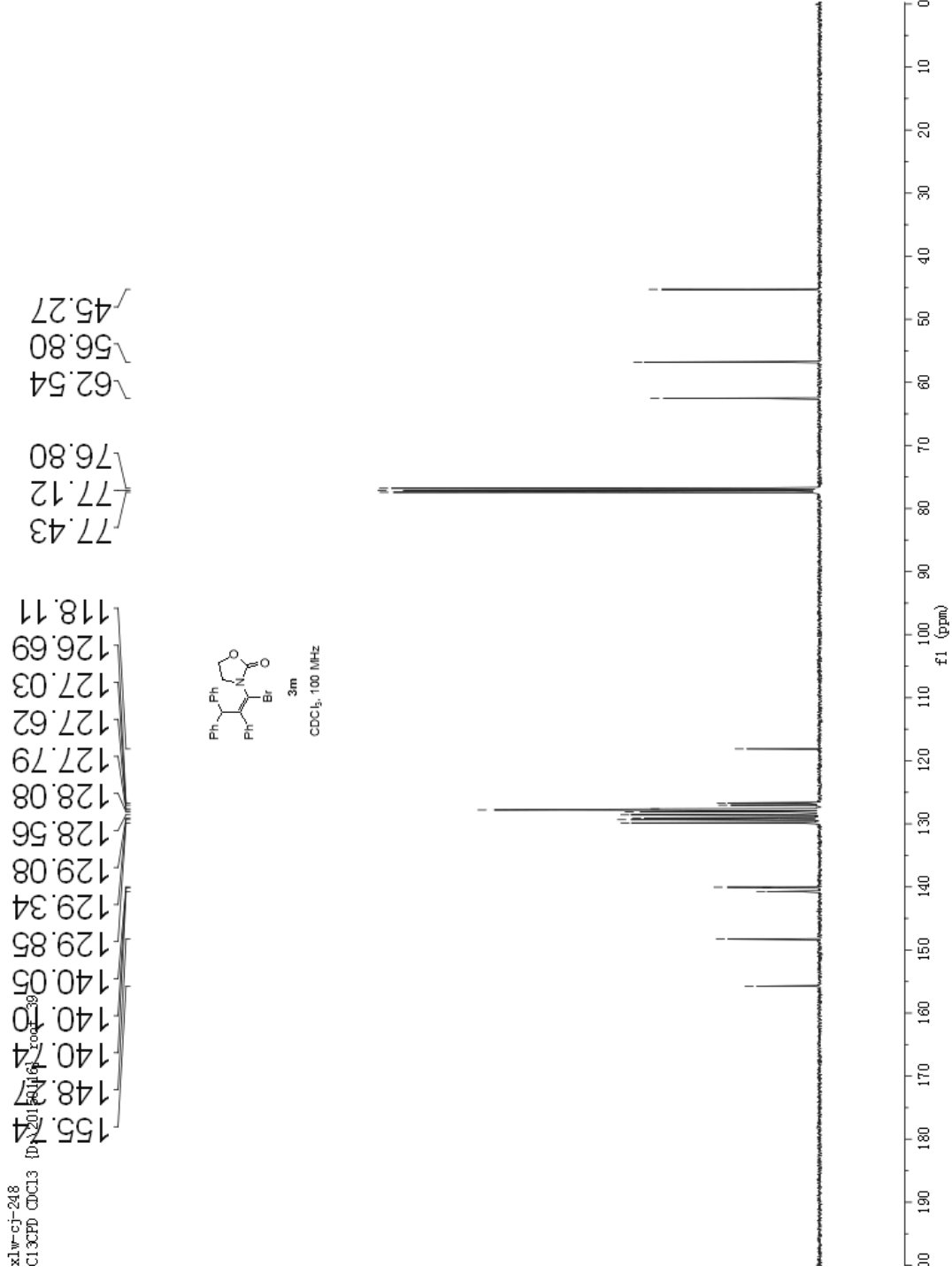
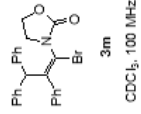
-1.5E+08

-1.0E+08

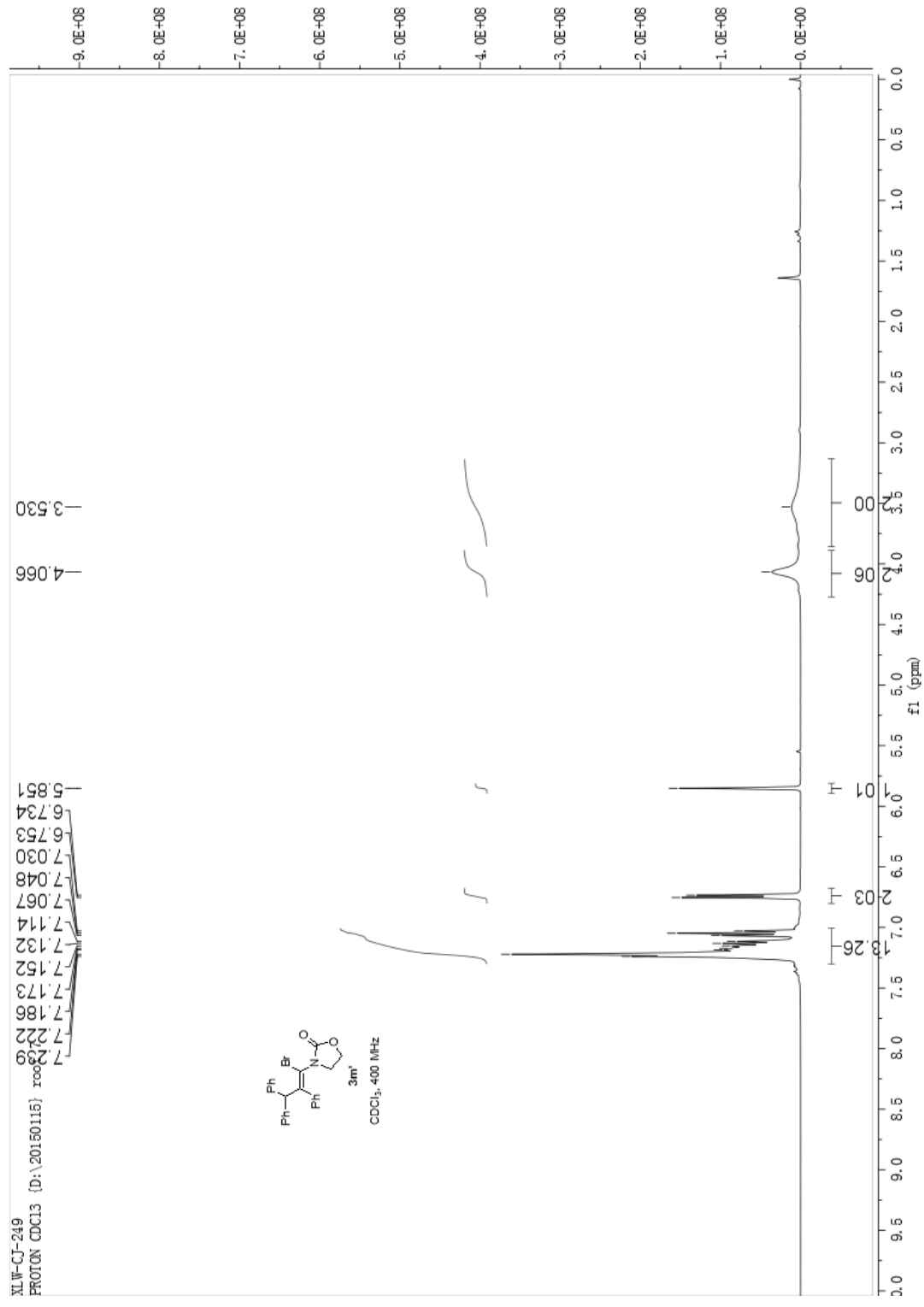
-5.0E+07

0.0E+00

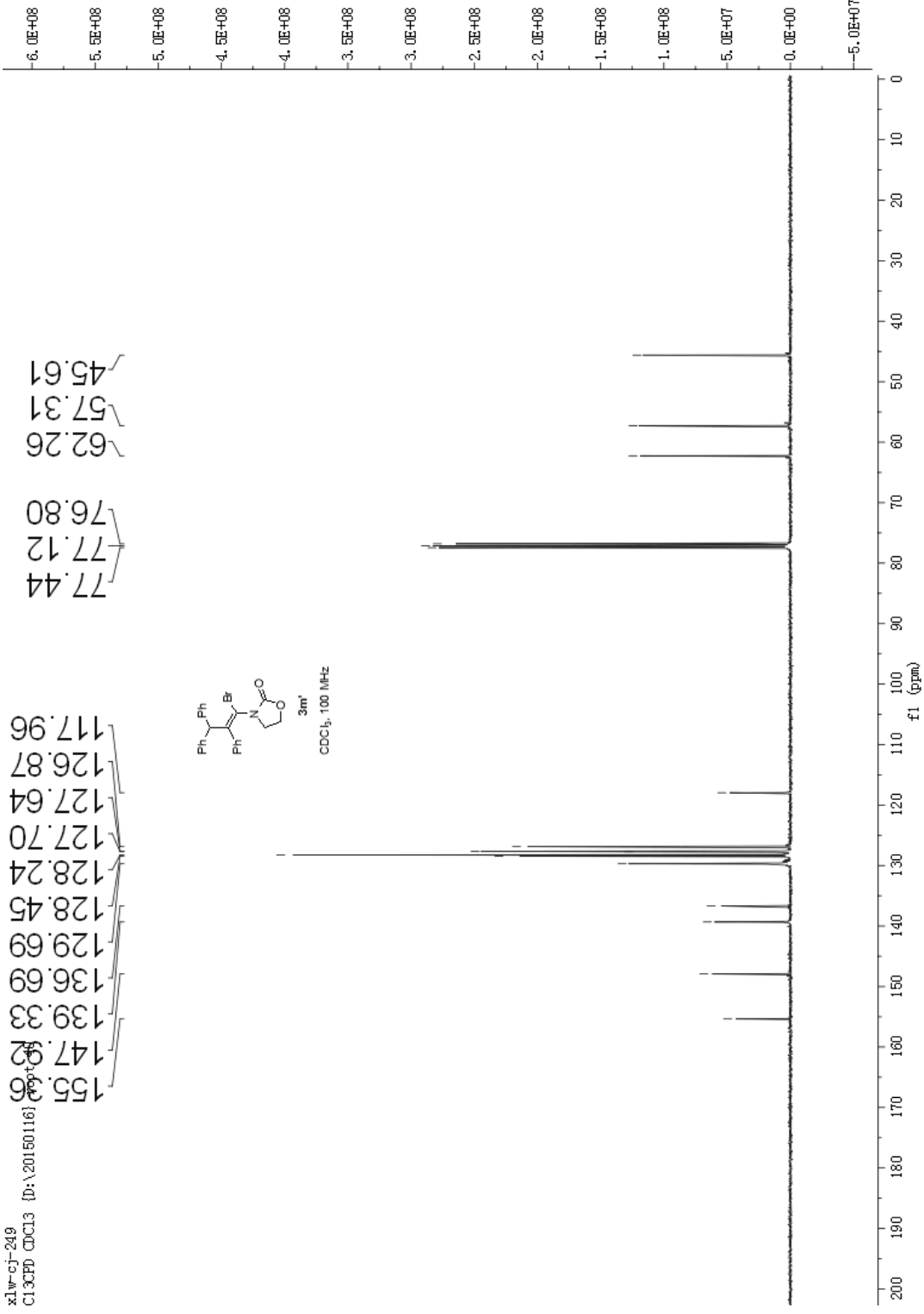
-5.0E+07



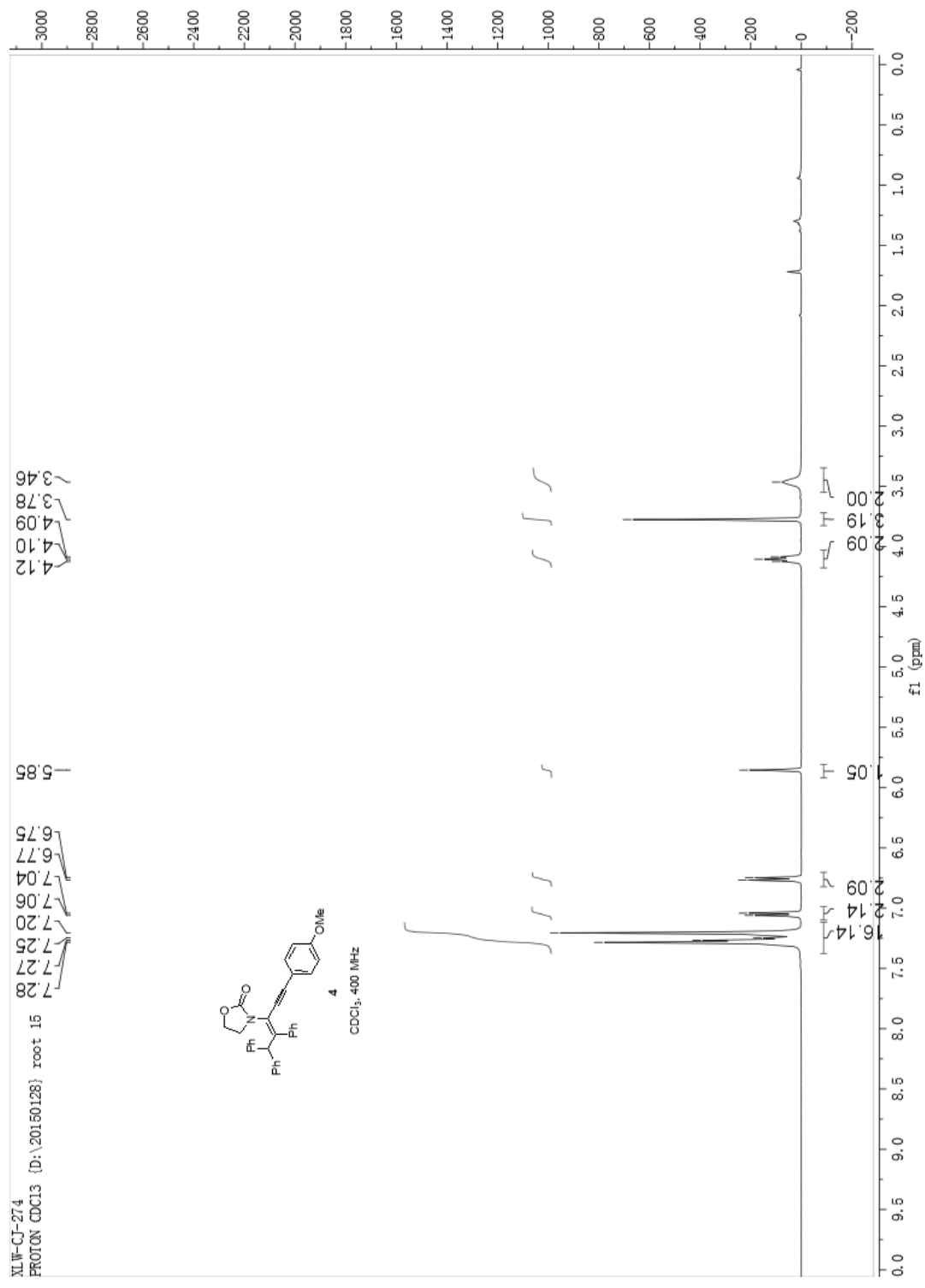
XI.W-CJ-249
PROTON CDCl3 (D:\20150115) root



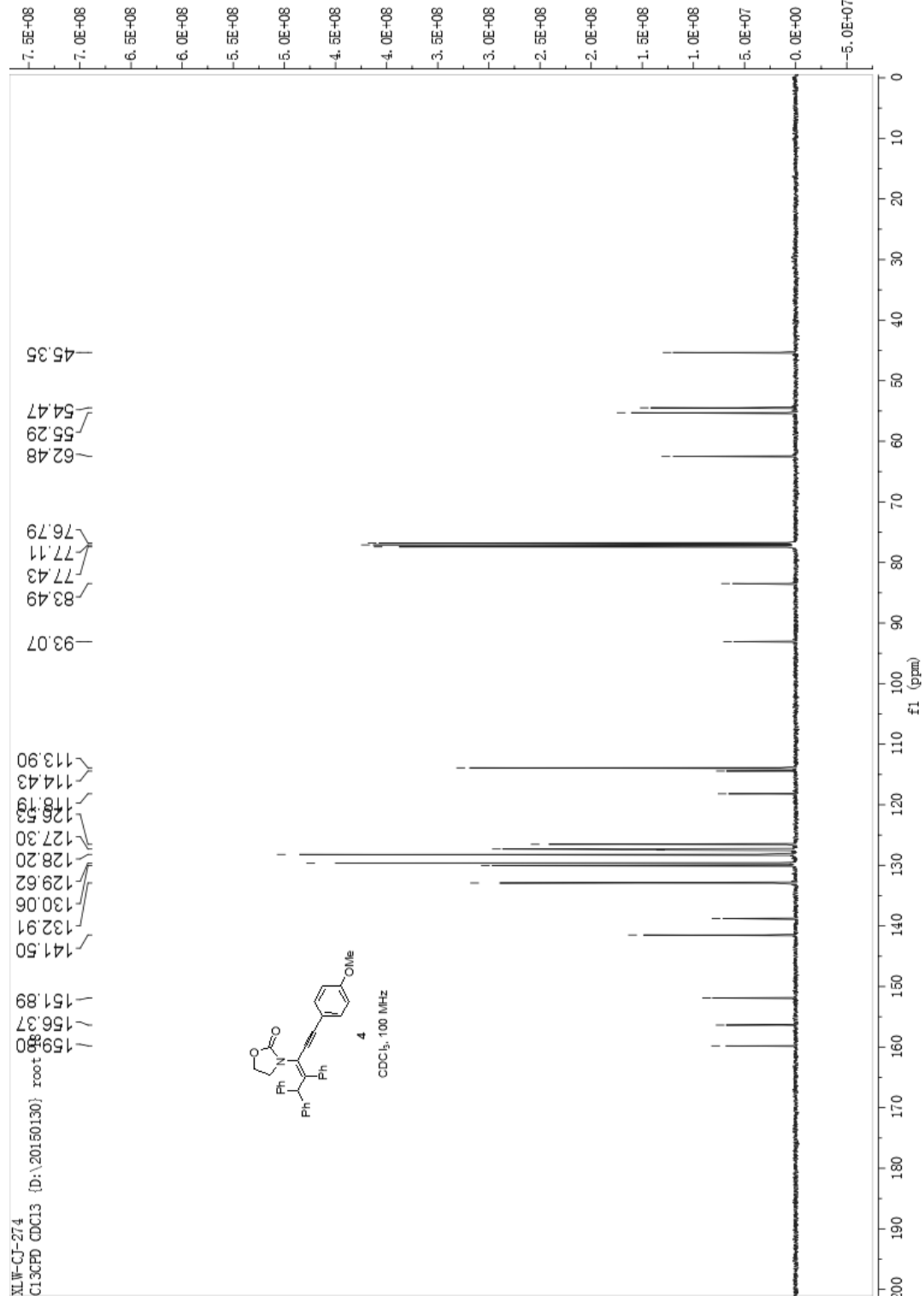
x1w-cj-249
C13CPD CDCl3 [D:\20150116]

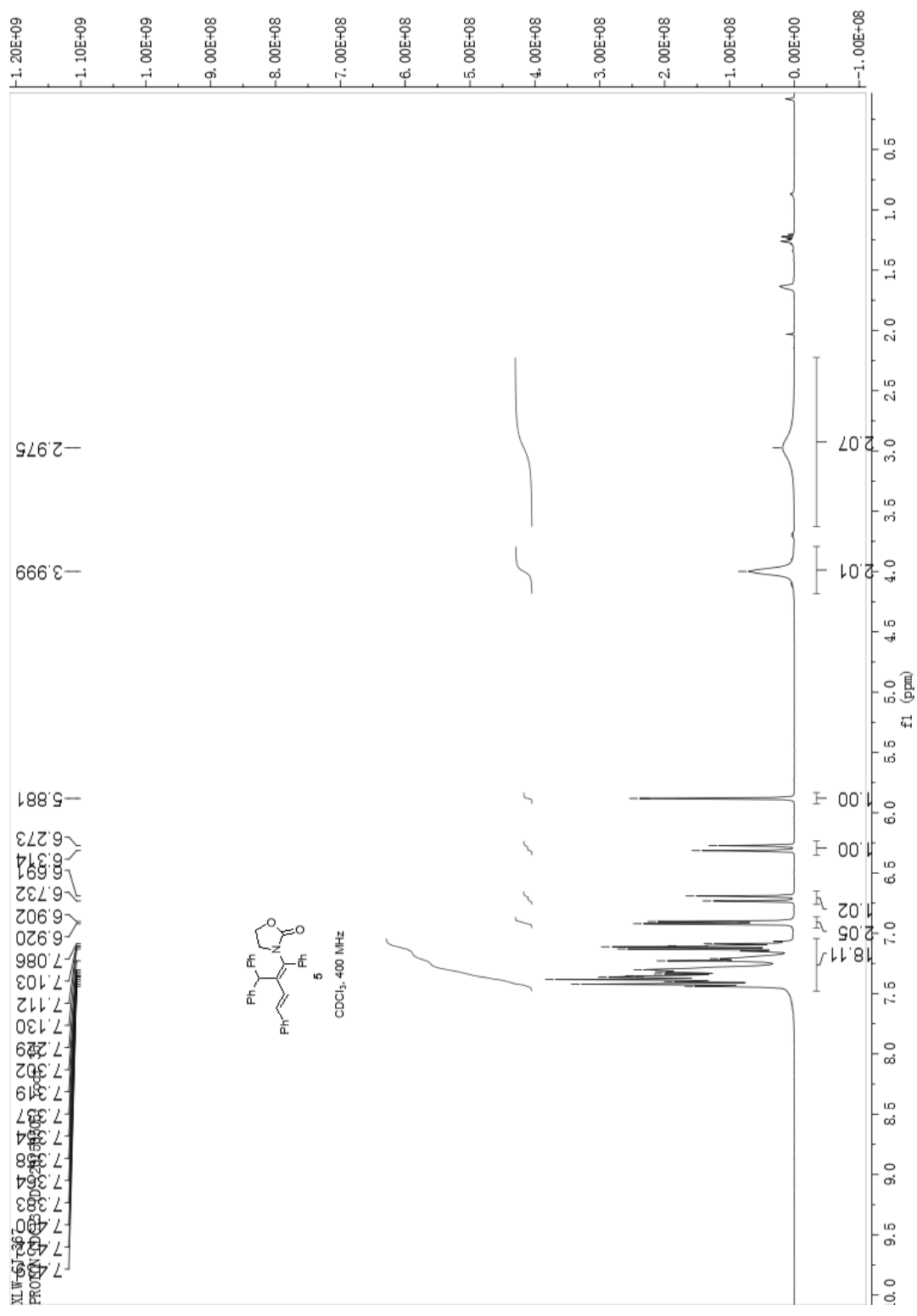


XI.W-CJ-274
PROTON CDCl3 (D:\20150128) root 15

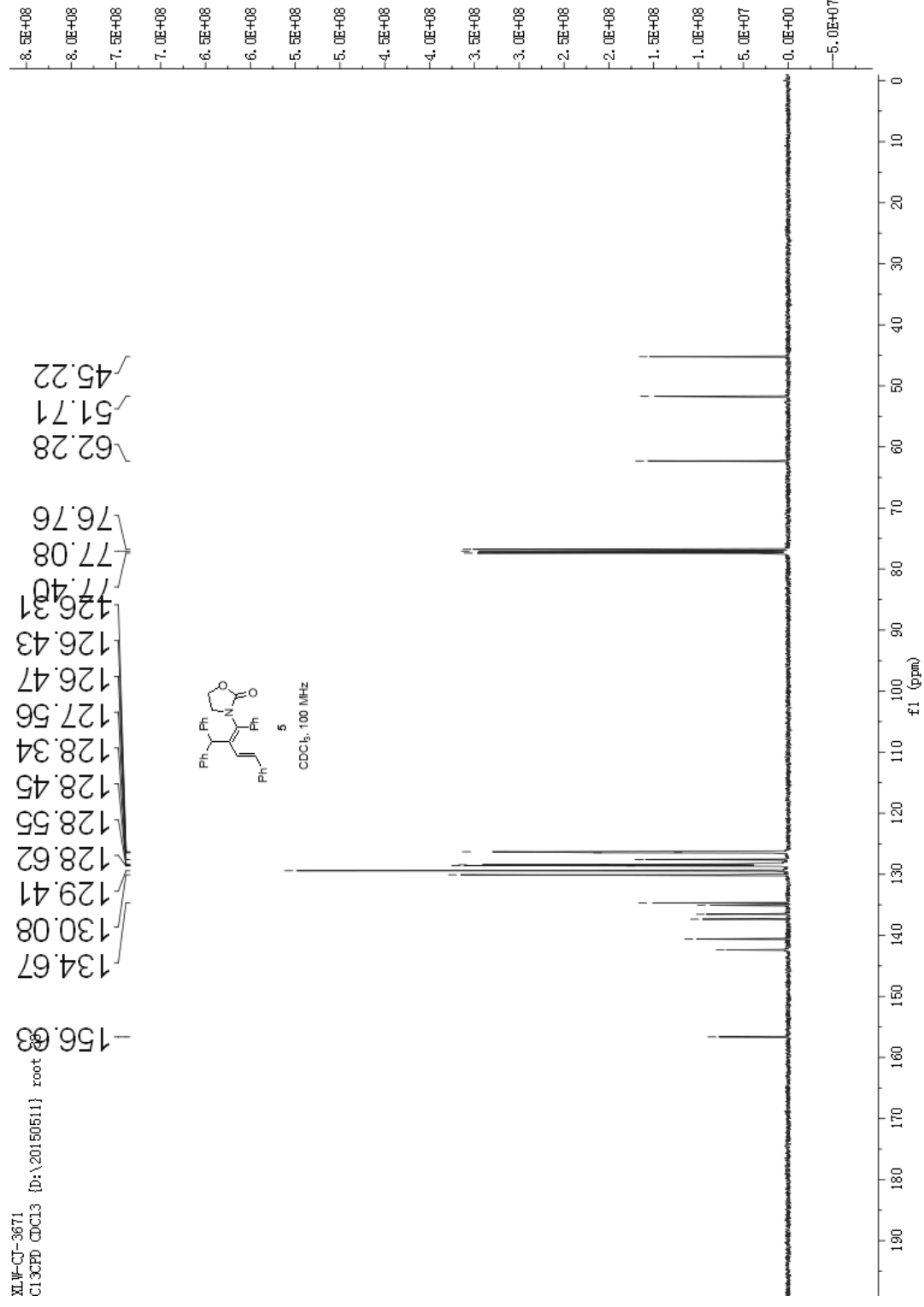


XLW-CJ-274
C13CPD CDC13 (D:\20150130) root



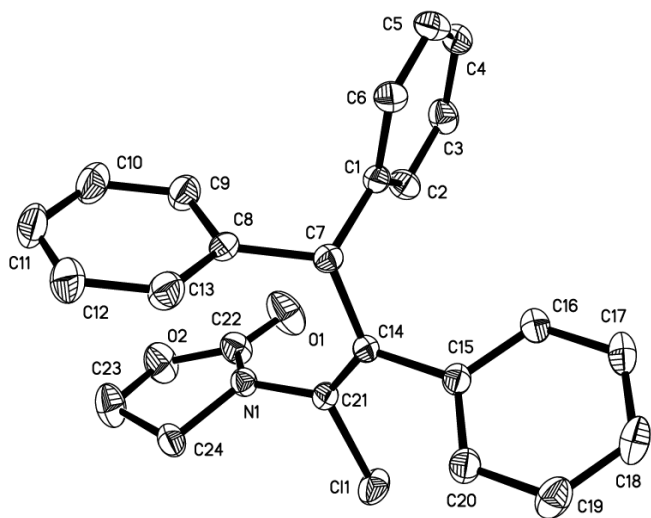


XI.W-CJ-3671
C13CPD CDCl3 [D:\20150511] root



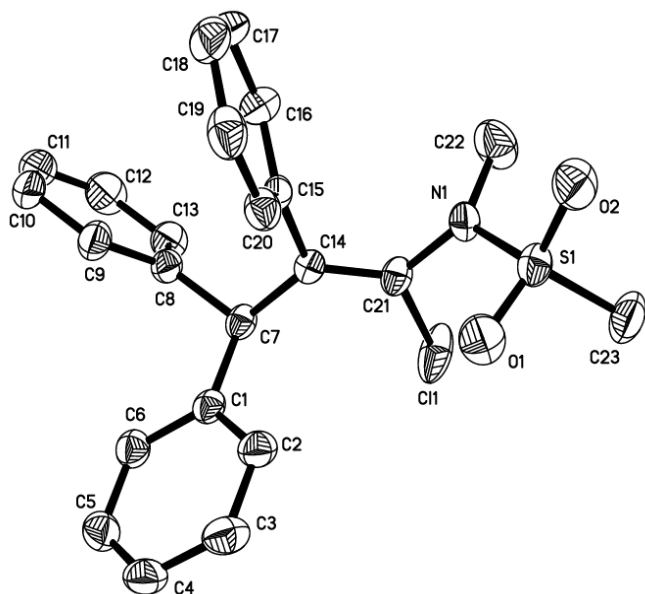
Crystal Structure of **3a**.

This crystal was deposited in the Cambridge Crystallographic Data Centre and assigned as CCDC 1414495. Further information can be found in the CIF file.



Crystal Structure of **3j'**.

This crystal was deposited in the Cambridge Crystallographic Data Centre and assigned as CCDC 1414497. Further information can be found in the CIF file.



Crystal Structure of **3m**.

This crystal was deposited in the Cambridge Crystallographic Data Centre and assigned as CCDC 1414496. Further information can be found in the CIF file.

