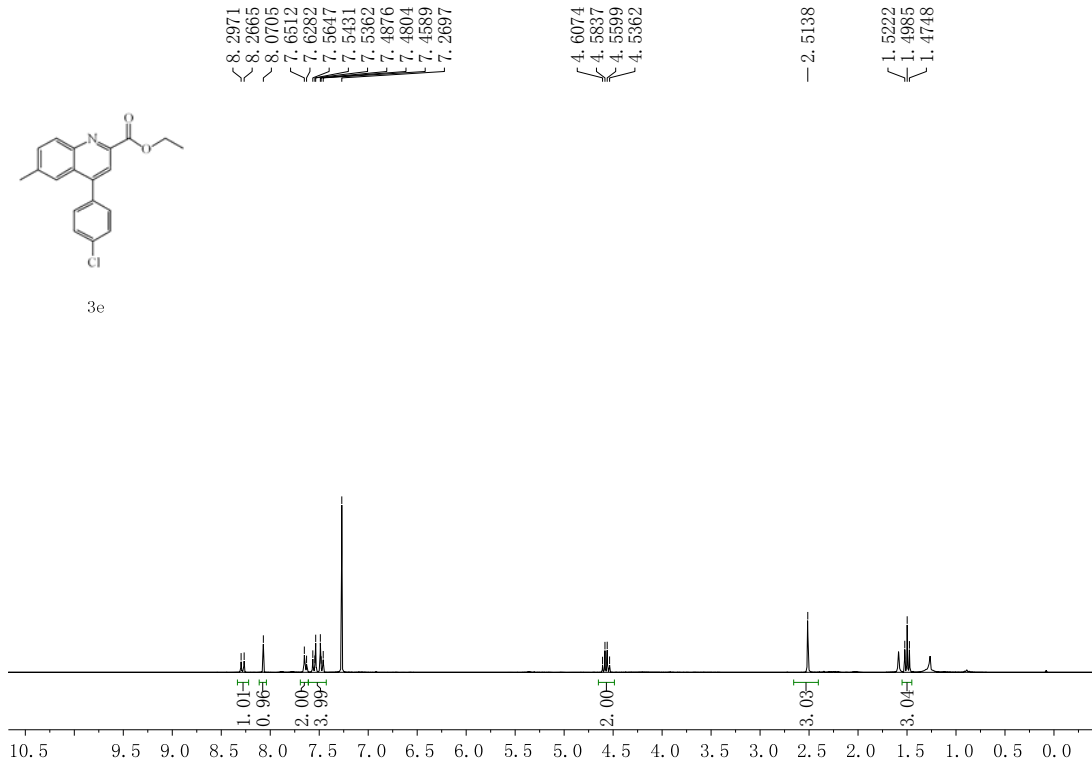
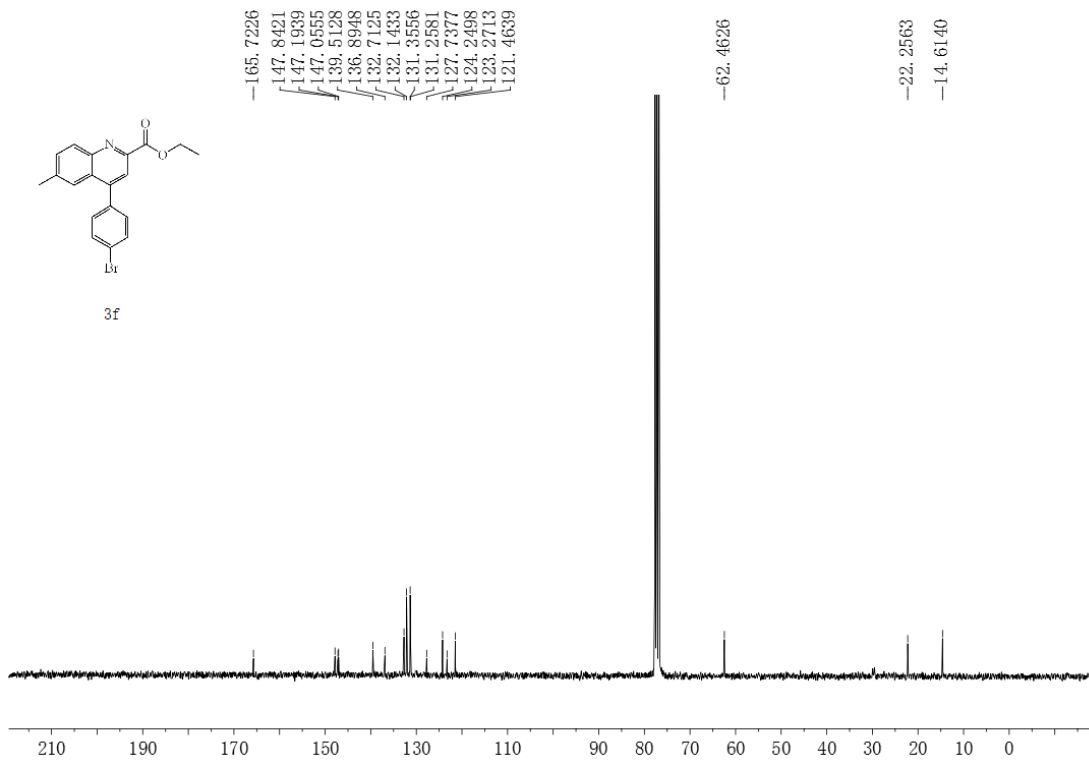
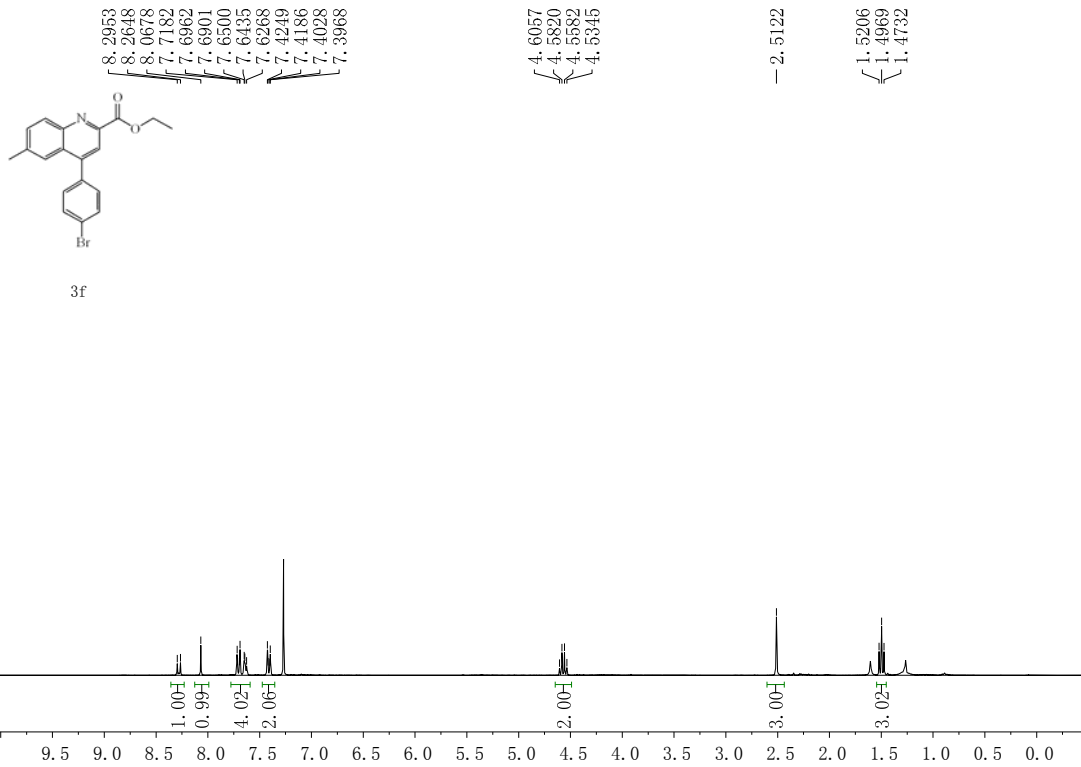
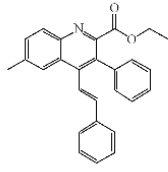


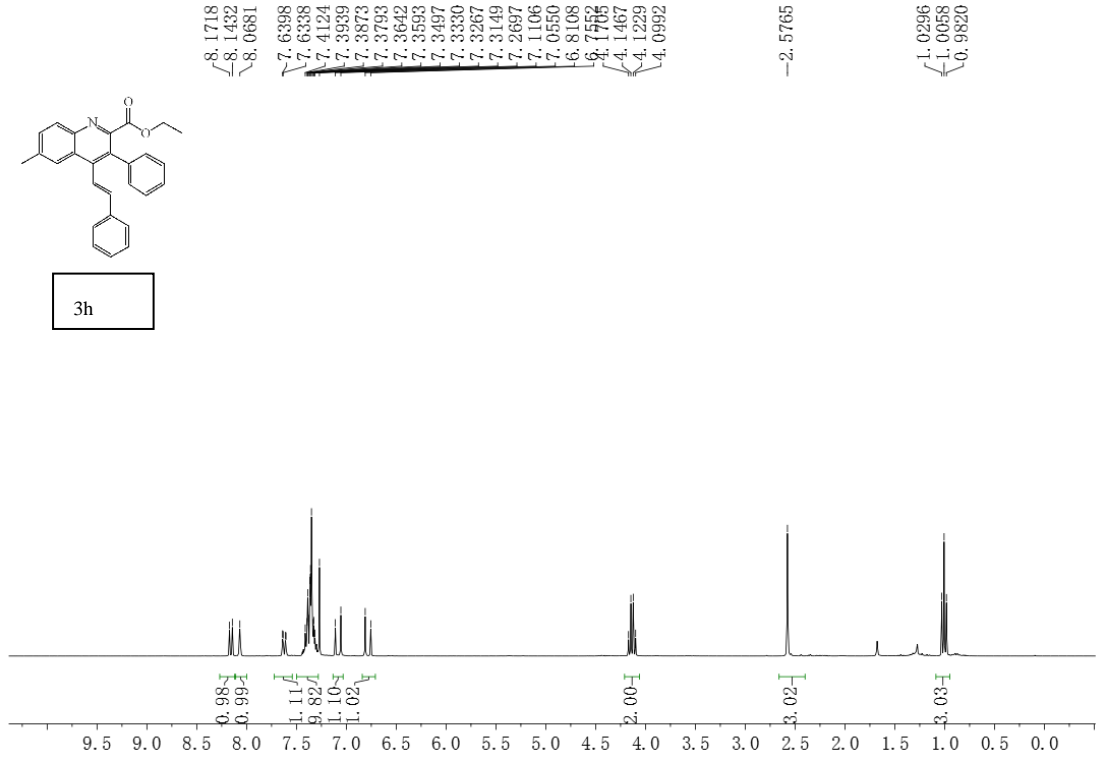
3e

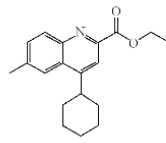






3h

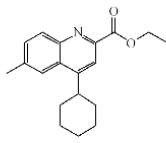
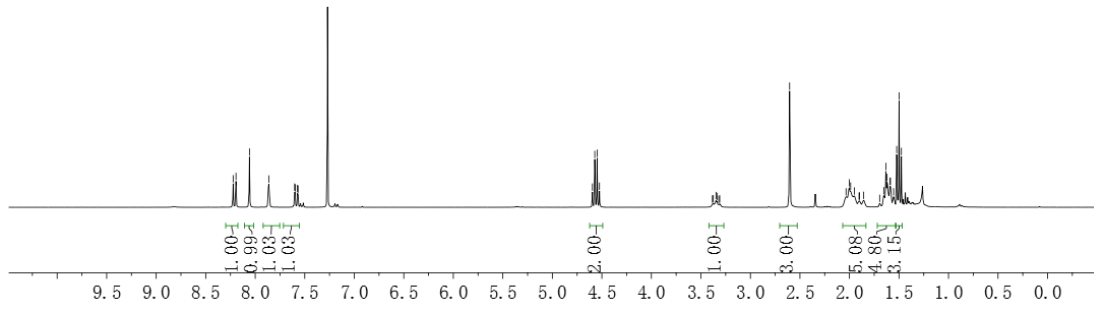




3i

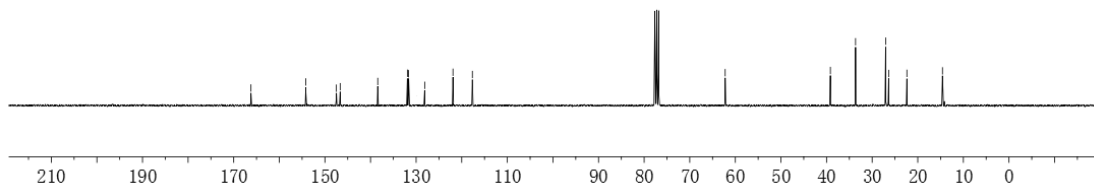
8.2230
8.1942
8.0584
7.8634
7.6023
7.5965
7.5734
7.5676

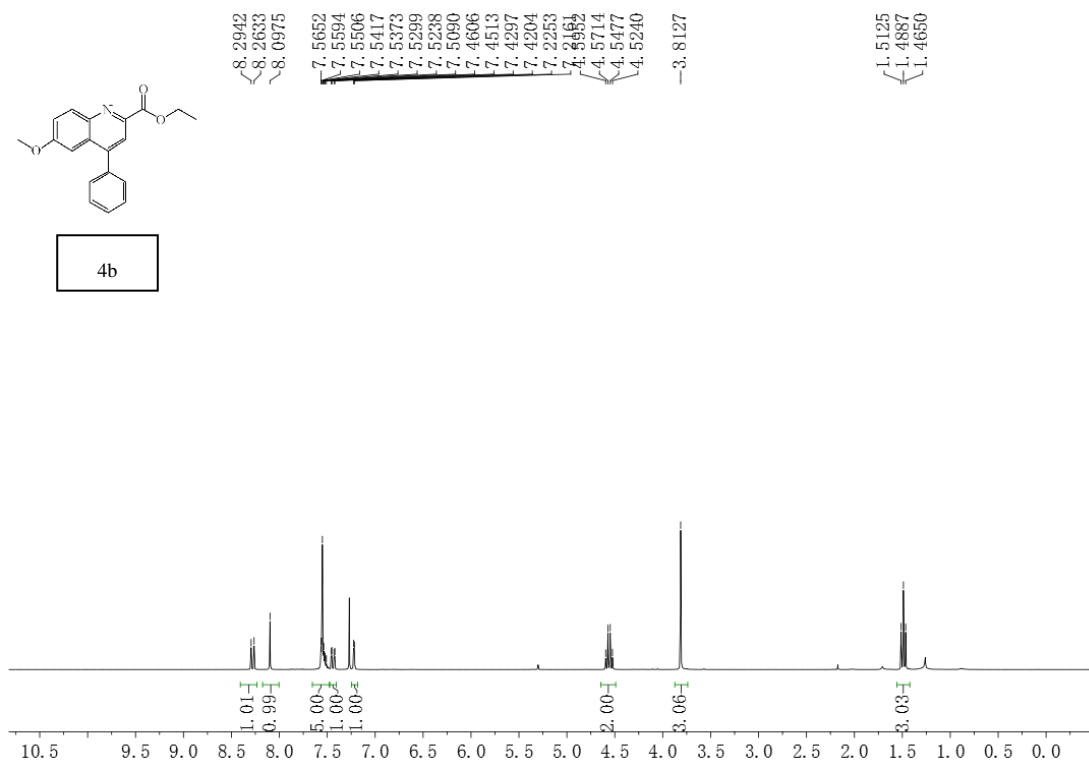
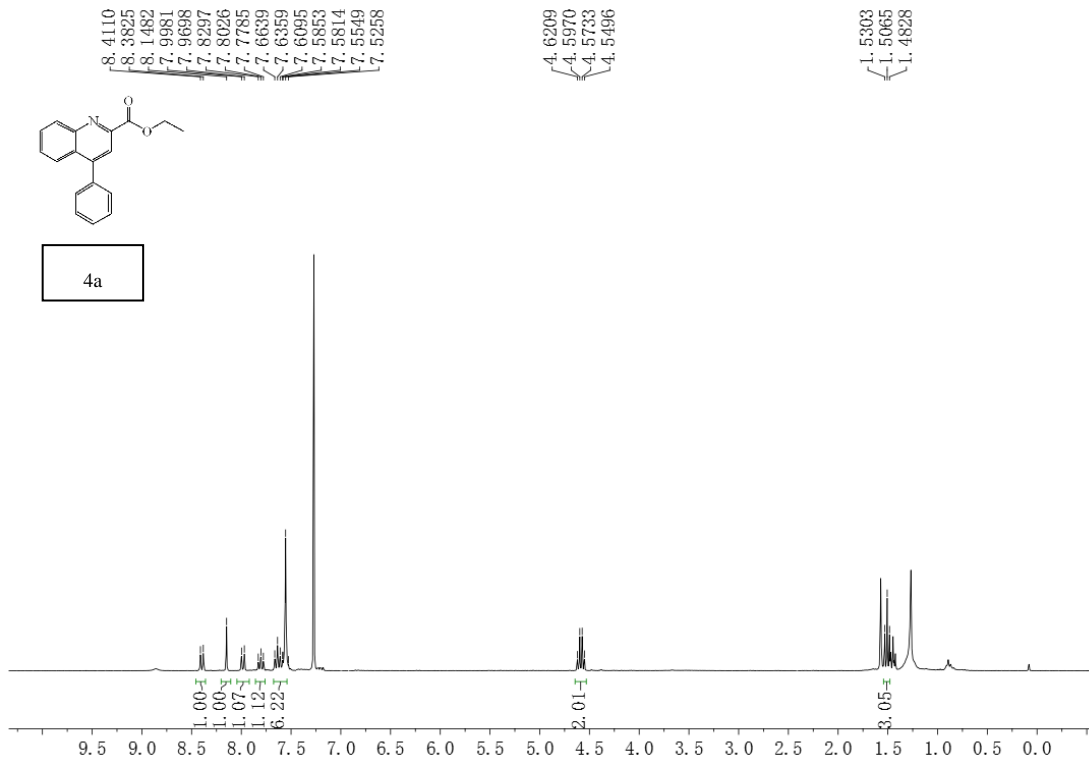
4.5953
4.5716
4.5479
4.5242
3.3839
3.3747
3.3475
3.3378
3.3197
3.3101
-2.6042
2.0347
2.0021
1.9881
1.9497
1.8982
1.8563
1.6329
1.6199
1.5910
1.5863
1.5545
1.5231
1.4994
1.4757

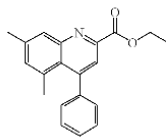


3i

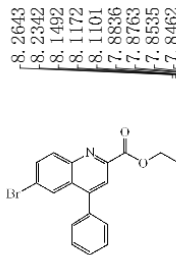
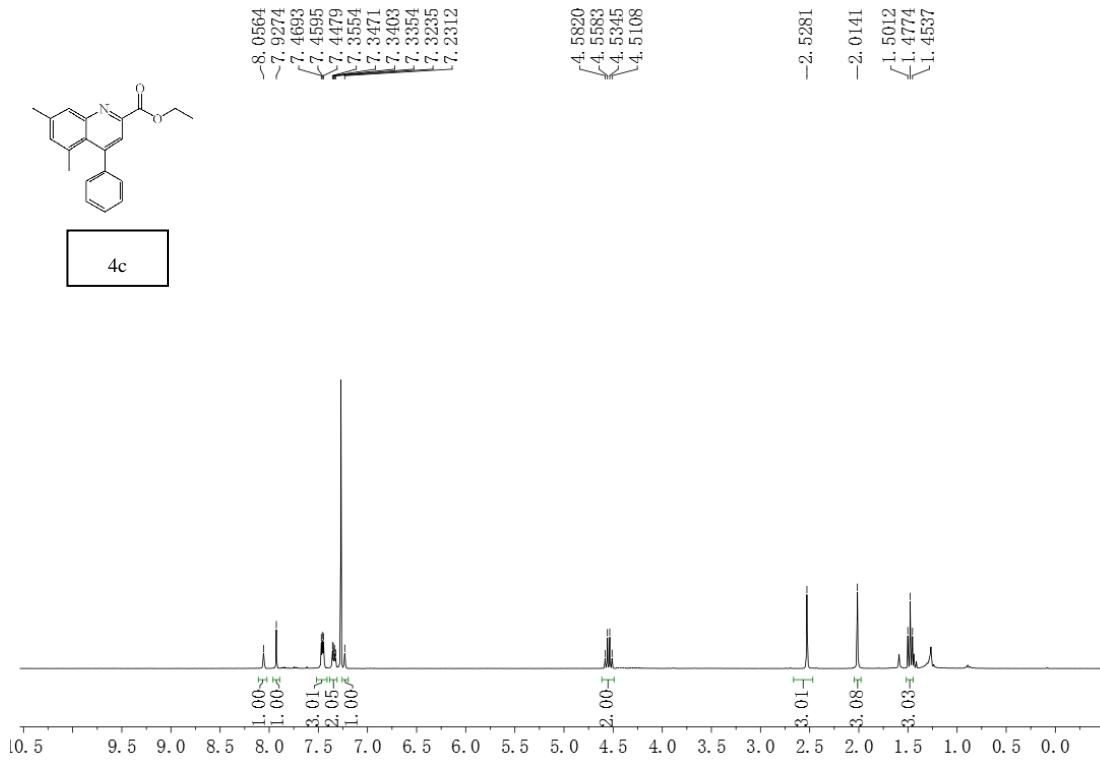
-166.2176
154.1871
147.4825
146.6515
138.4173
131.9199
131.6428
128.1242
121.9221
117.6681
-62.2288
39.1604
33.6381
27.0426
26.3778
22.8869
14.5854



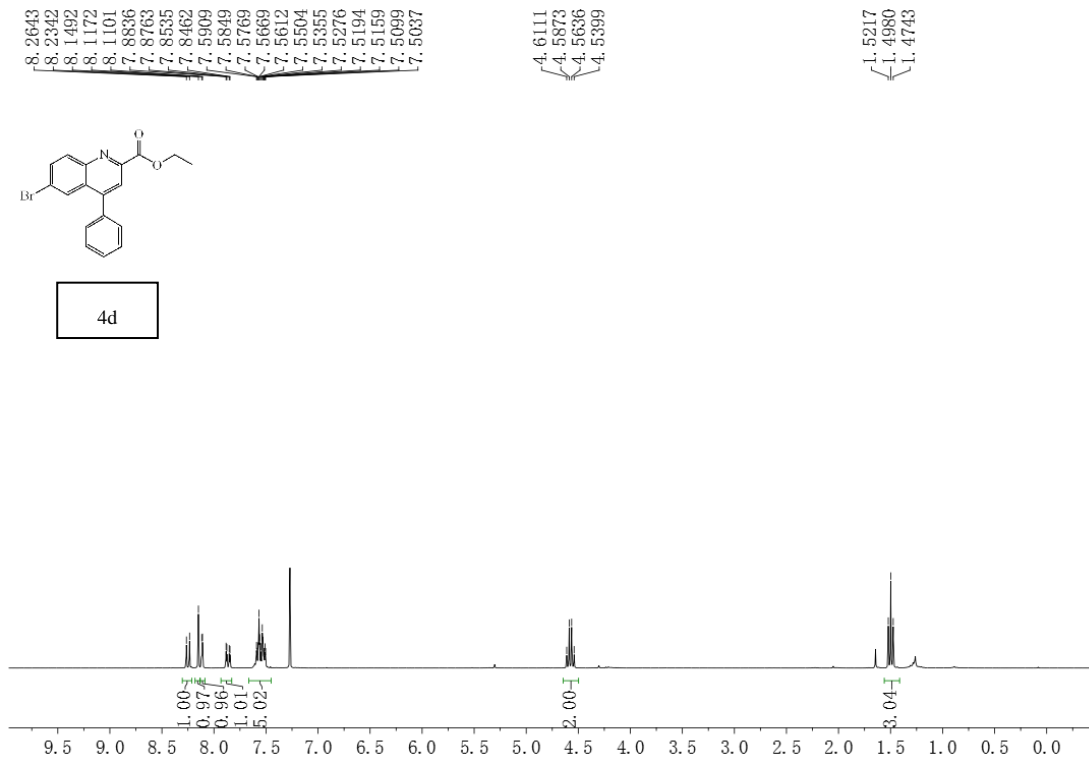




4c



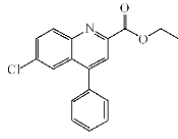
4d



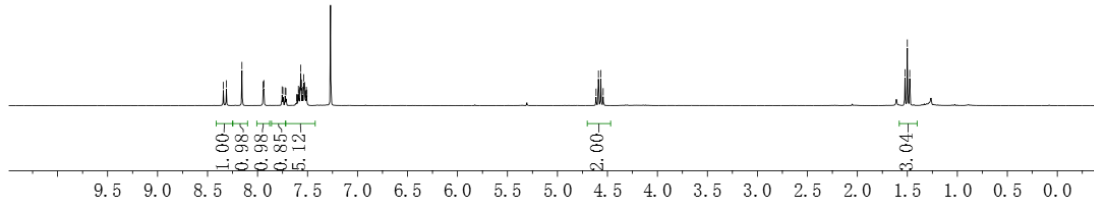
8.3421
8.3120
8.1562
7.9441
7.9366
7.7543
7.7466
7.7241
7.7164
7.6990
7.6038
7.5992
7.5916
7.5856
7.5775
7.5673
7.5615
7.5508
7.5372
7.5295
7.5213
7.5178
7.5117
7.5055

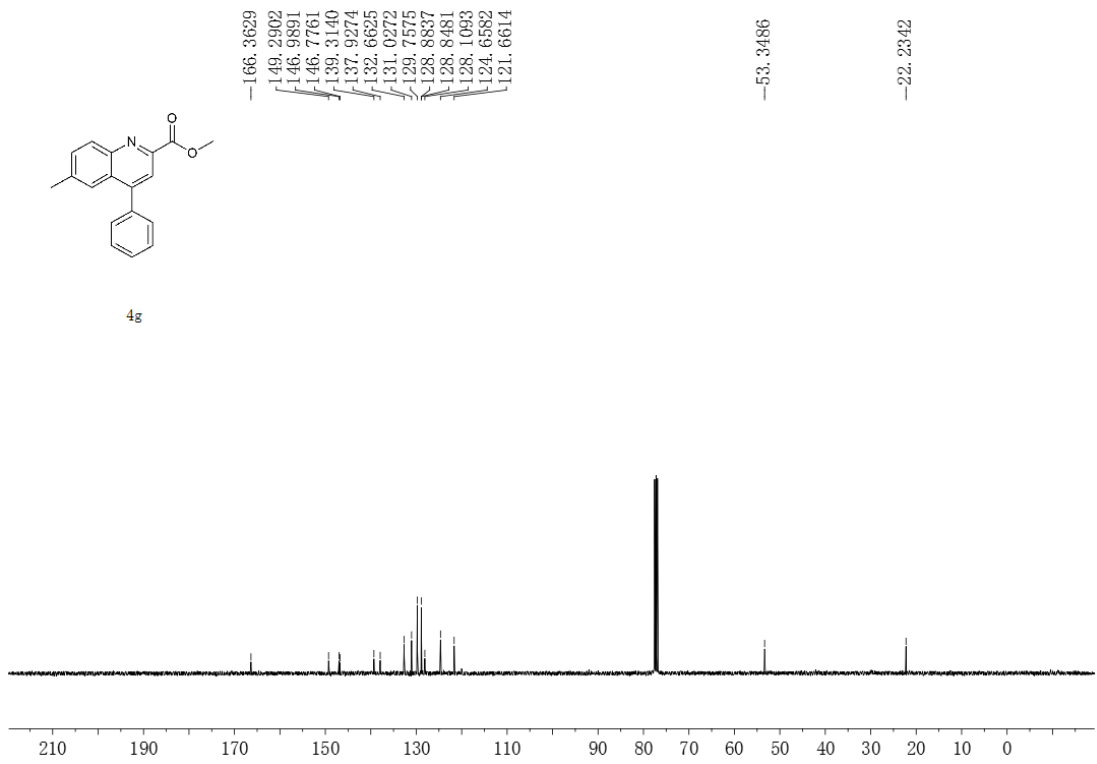
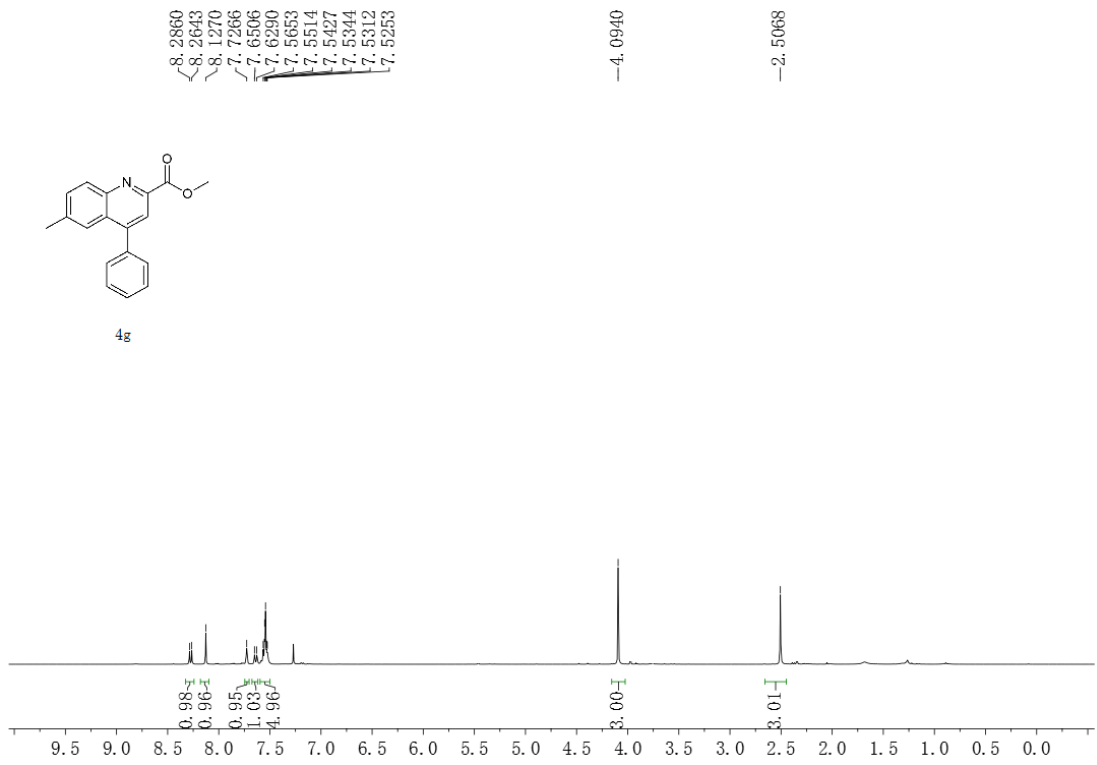
4.6138
4.5900
4.5663
4.5426

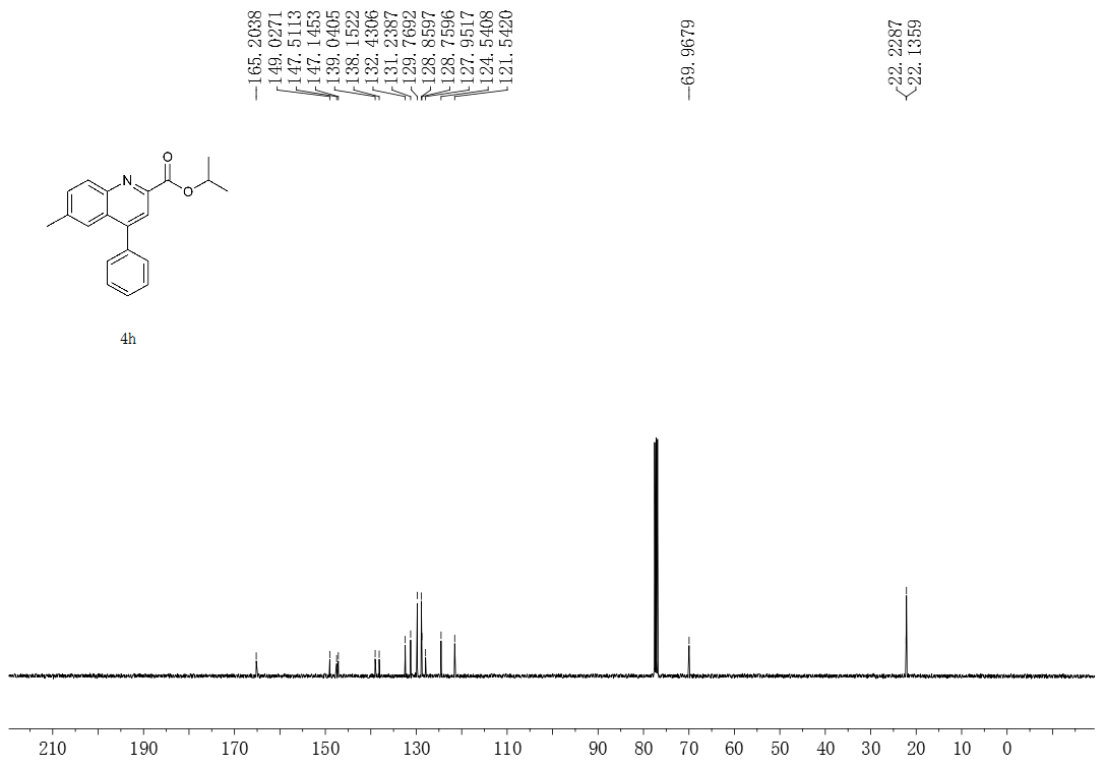
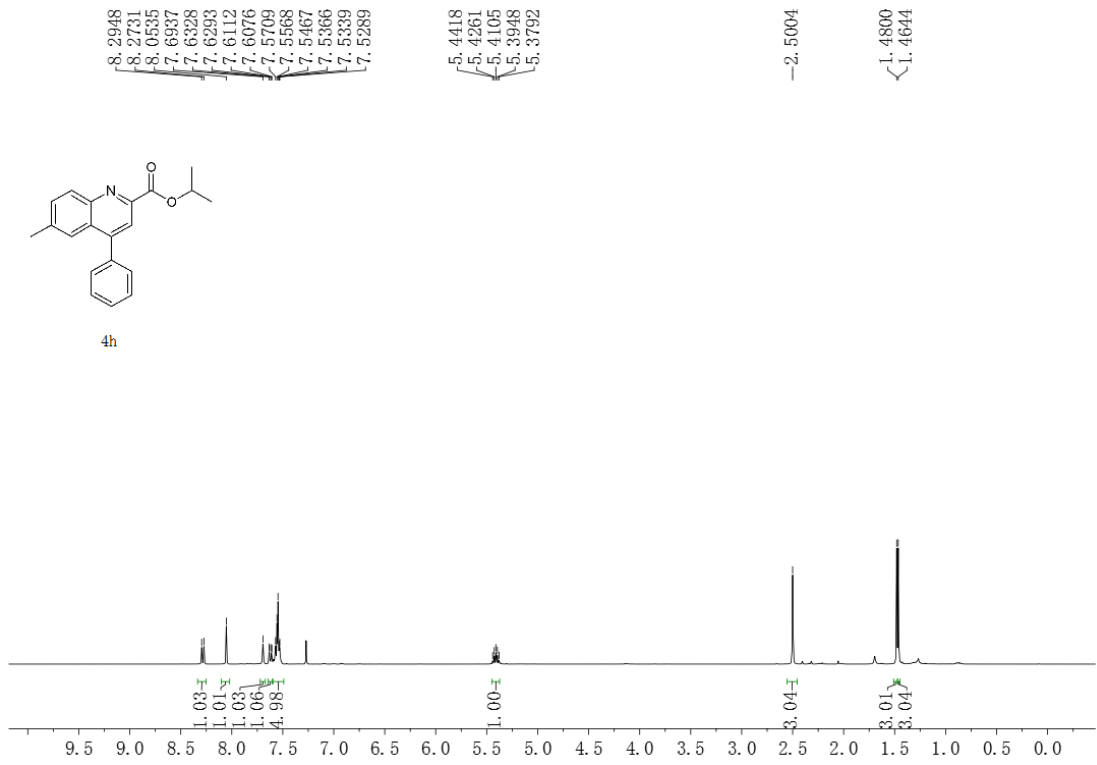
1.5238
1.5001
1.4764

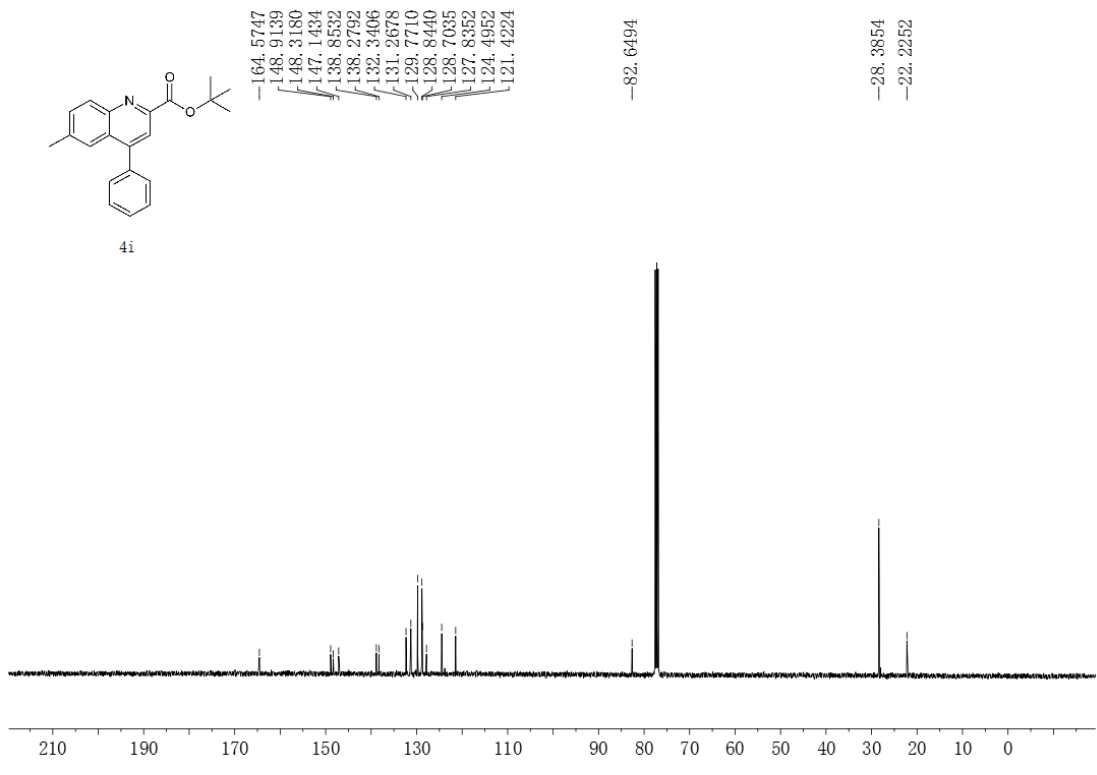
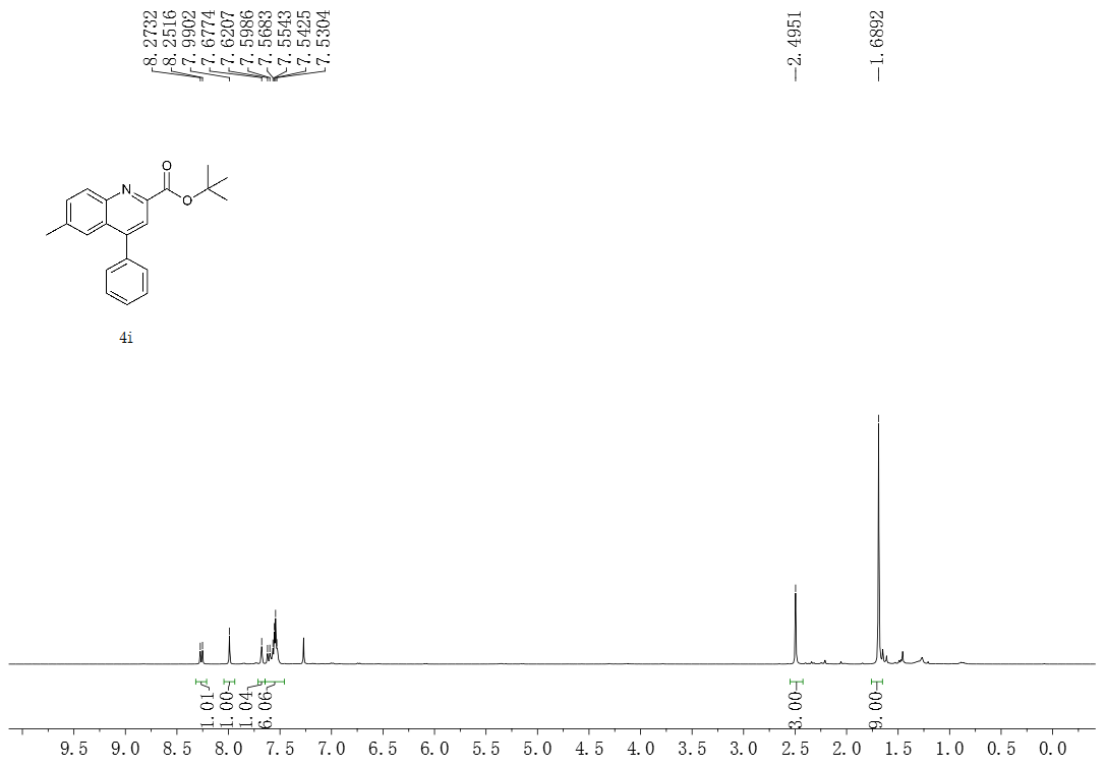


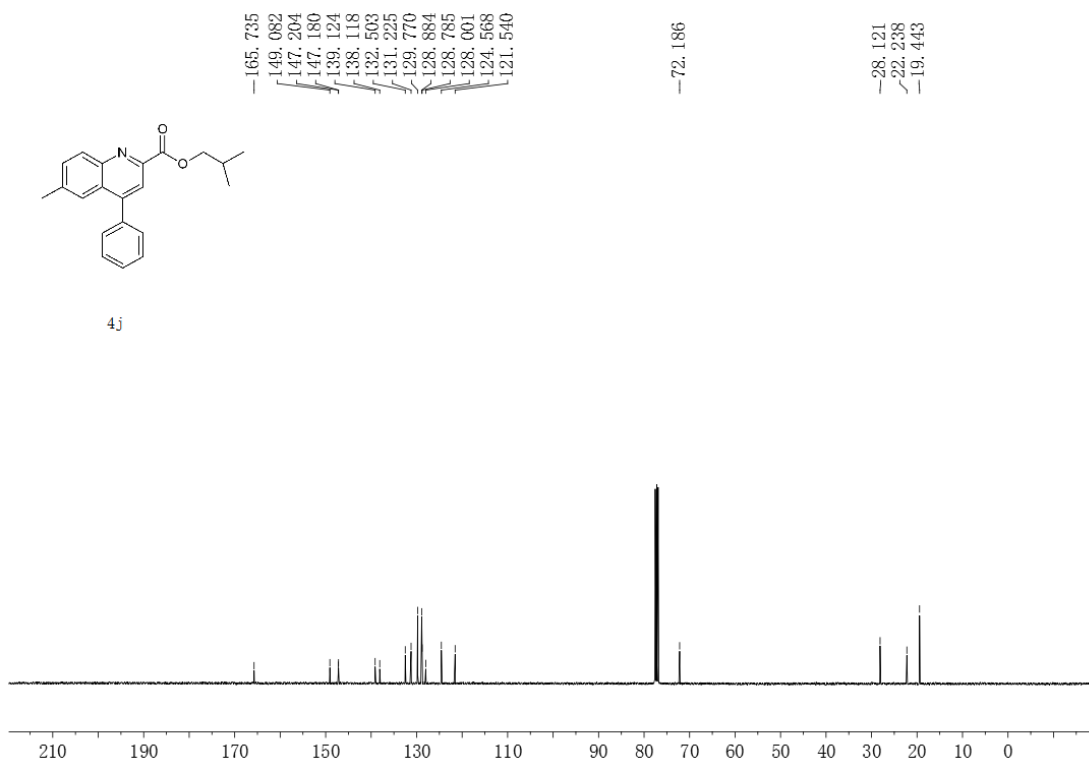
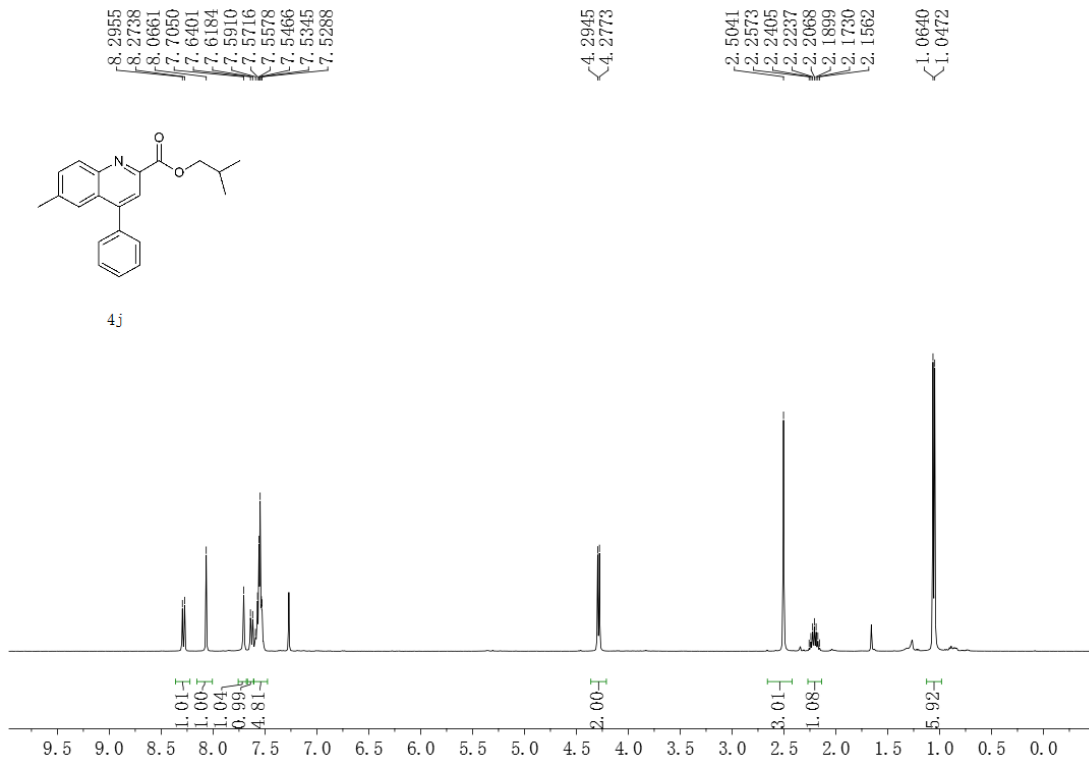
4e

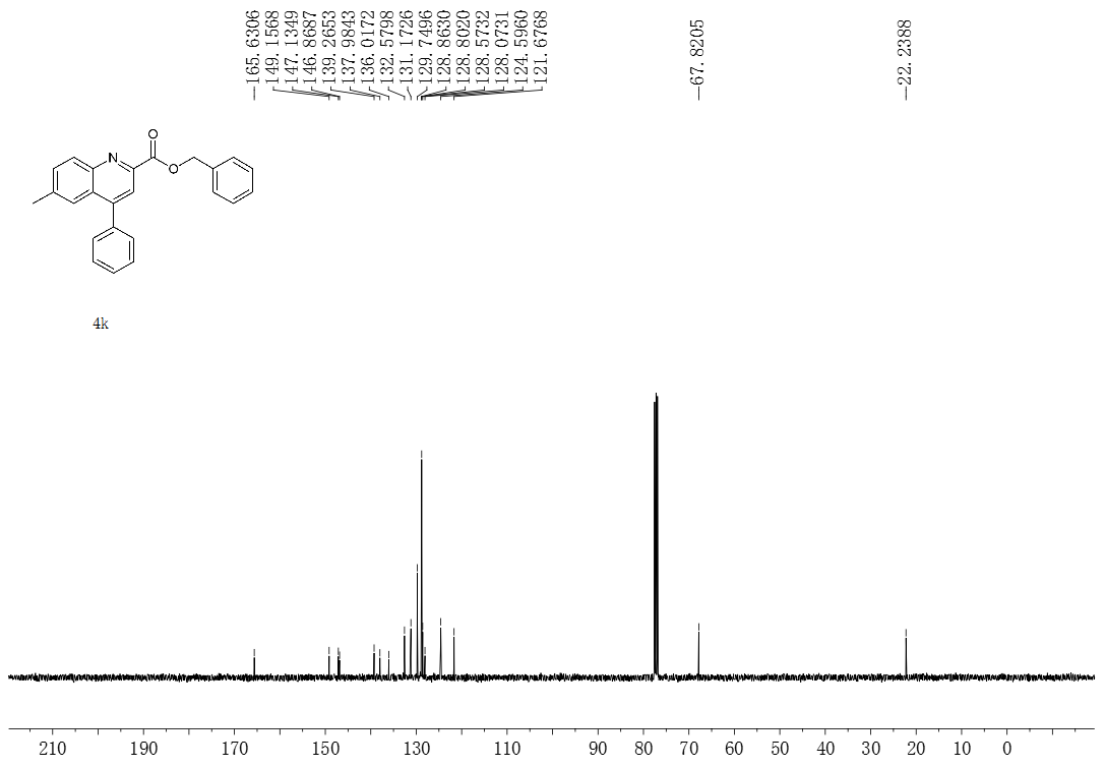
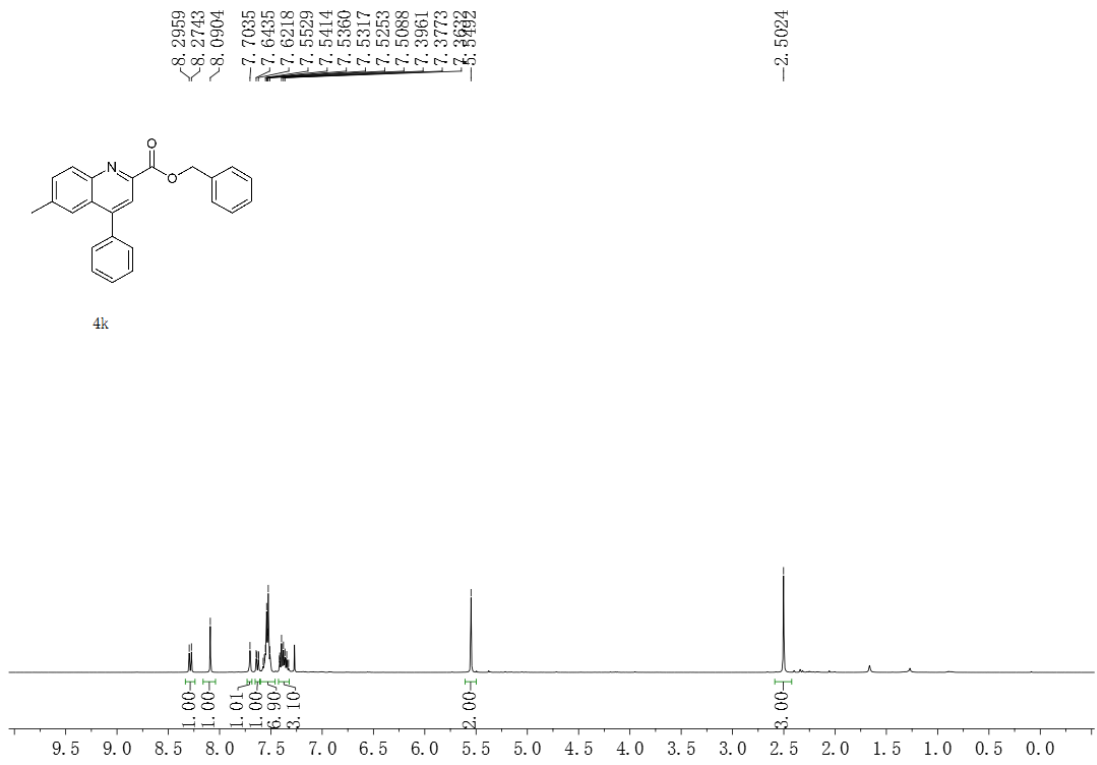


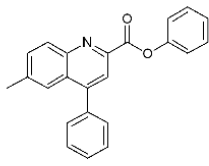




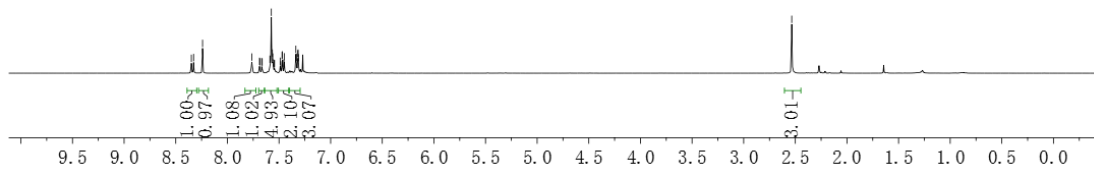




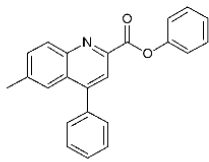




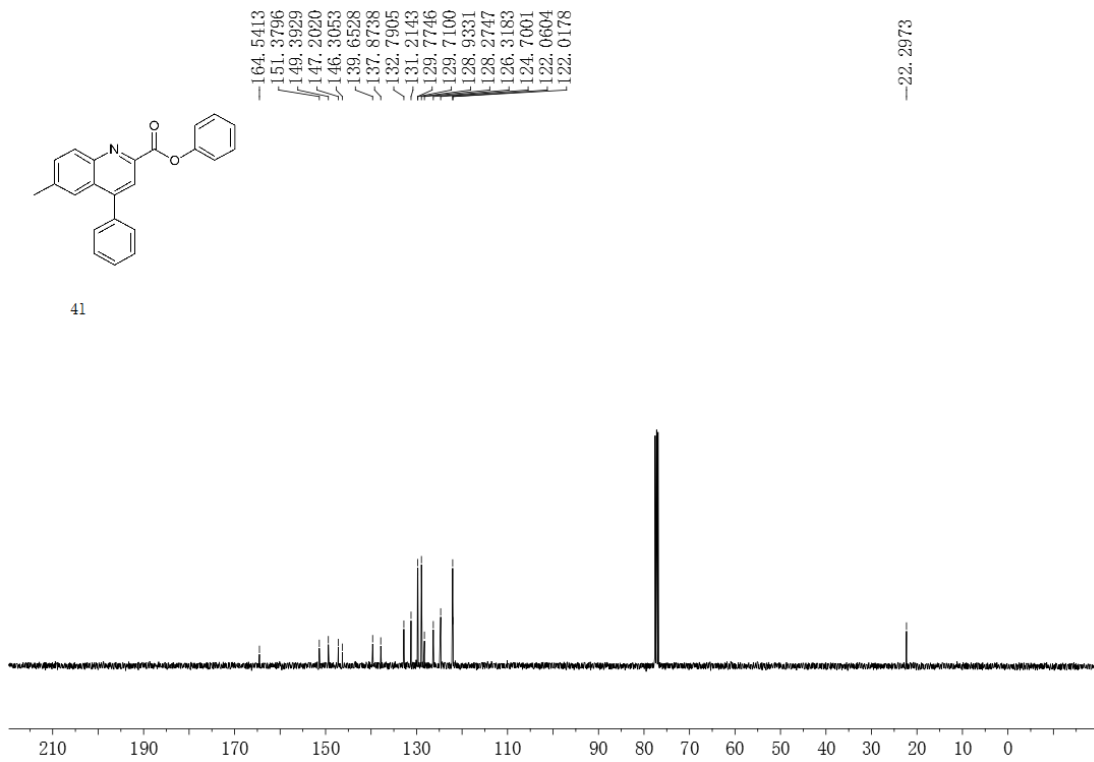
41



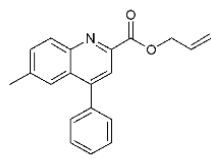
-2.5346



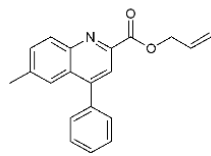
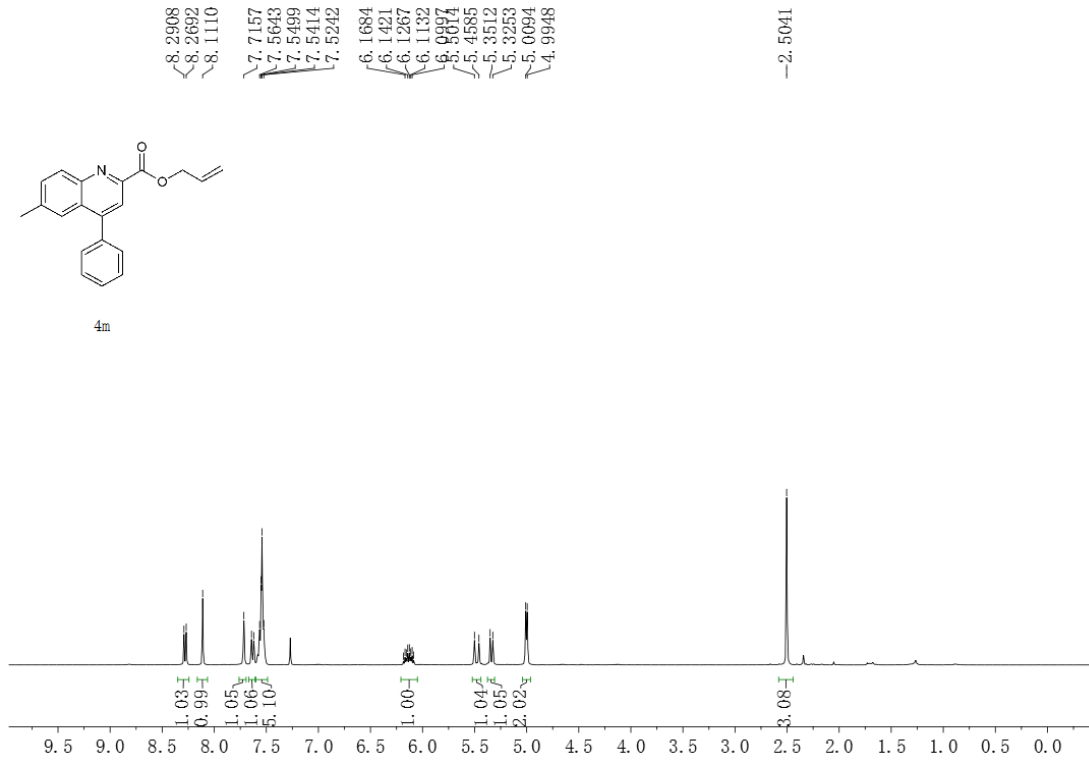
41



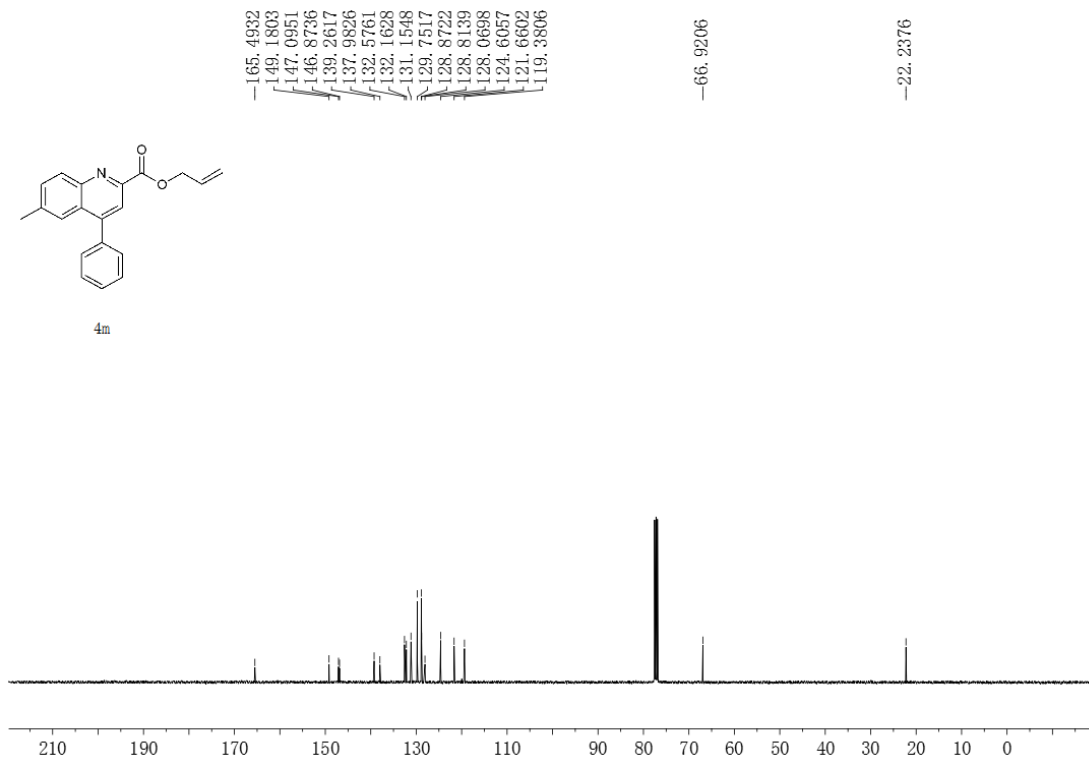
-22.2973

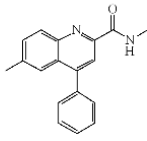


4m

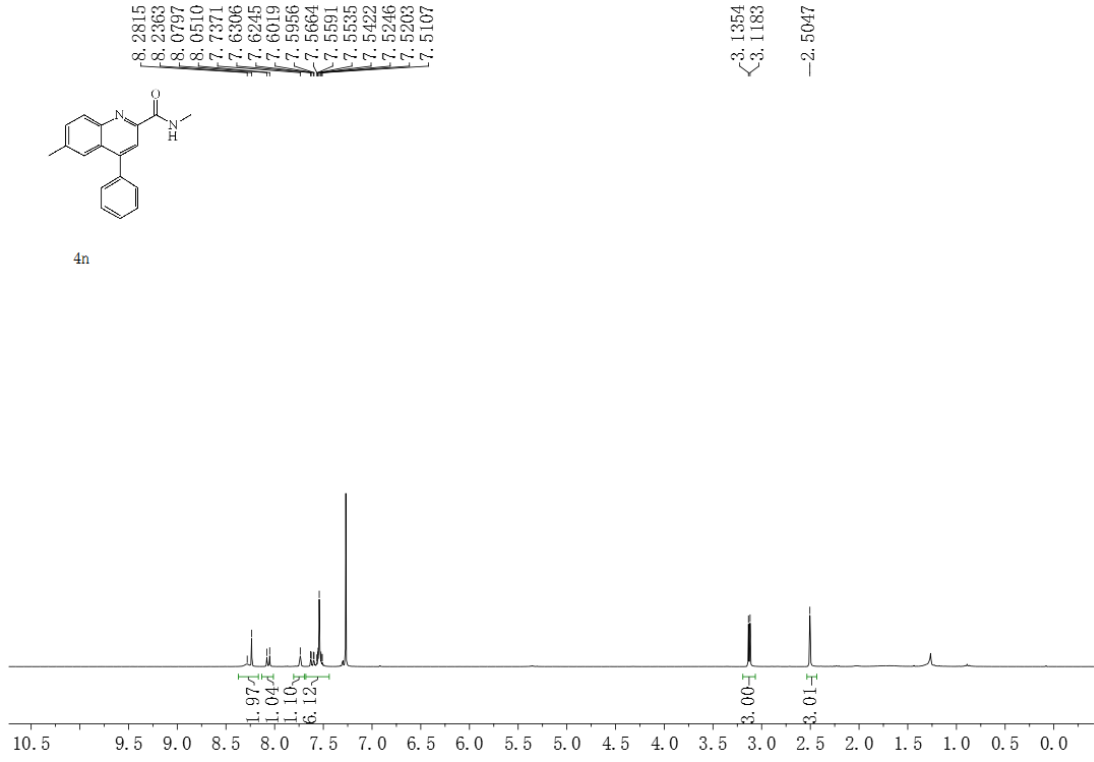


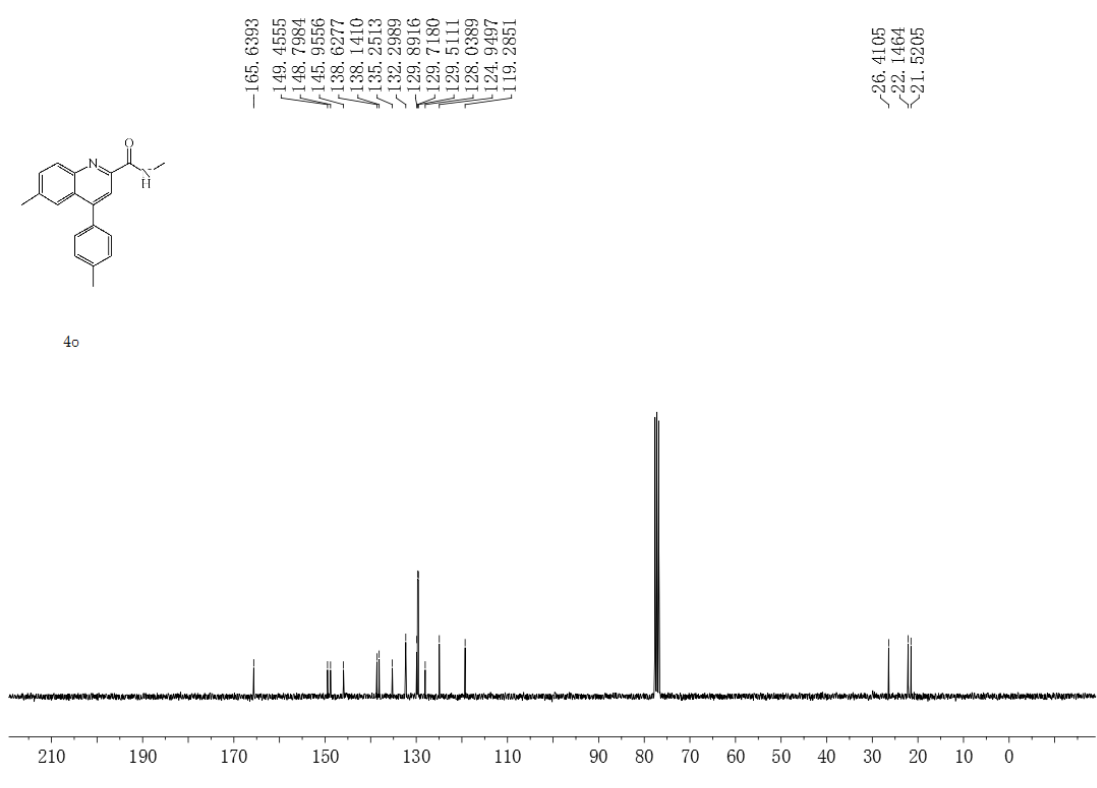
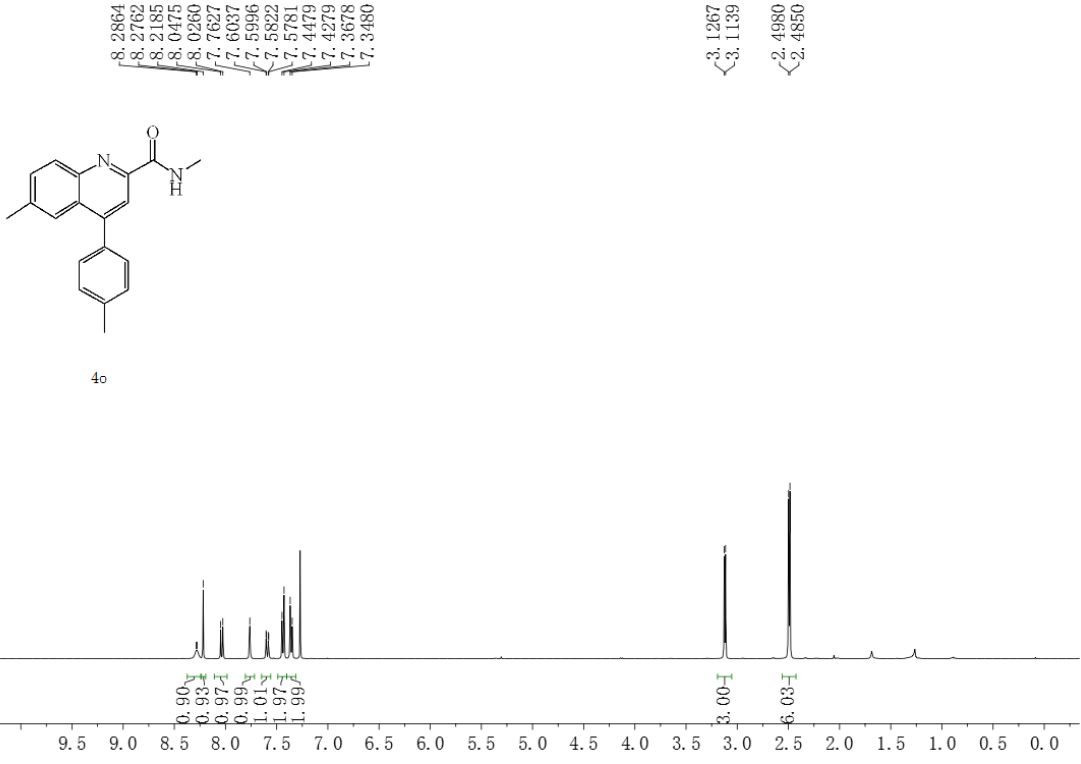
4m

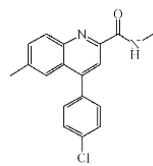




4n



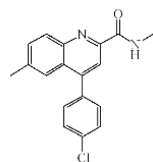
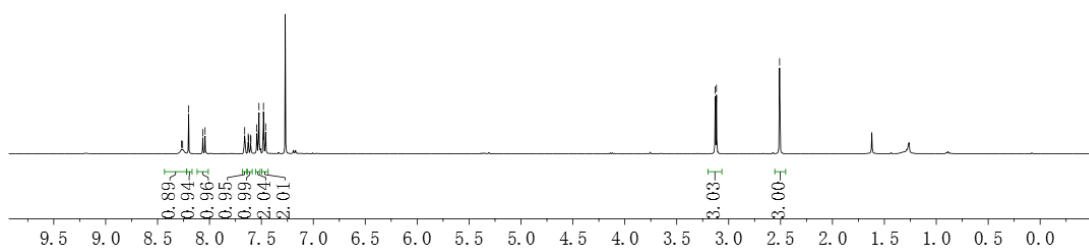




4p

8.2695
8.2584
8.2009
8.0642
8.0428
7.6612
7.6271
7.6230
7.6056
7.6014
7.5446
7.5285
7.5235
7.4803
7.4758
7.4592

3.1301
3.1173
-2.5092



4p

165.4381
148.8188
148.0622
145.9338
138.6039
136.5761
134.9684
132.5418
131.0915
130.0435
129.1127
127.7284
124.5196
119.2656

-26.4475
-22.1946

