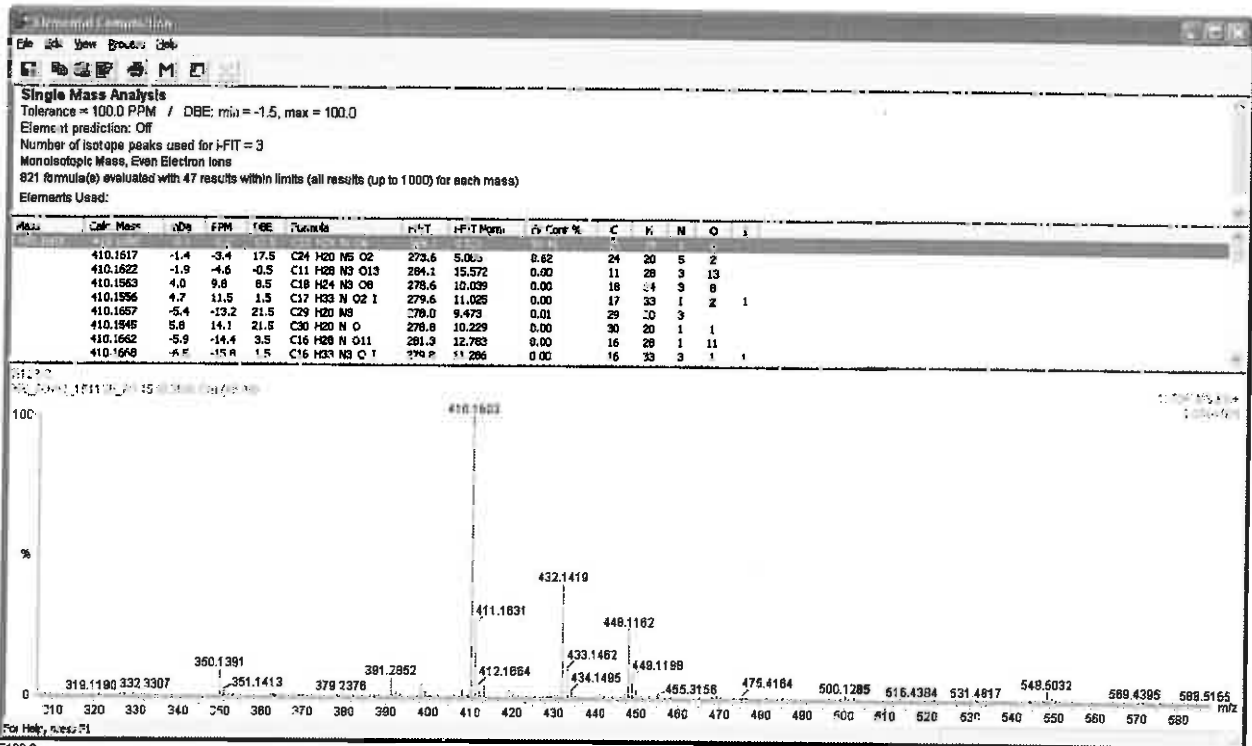
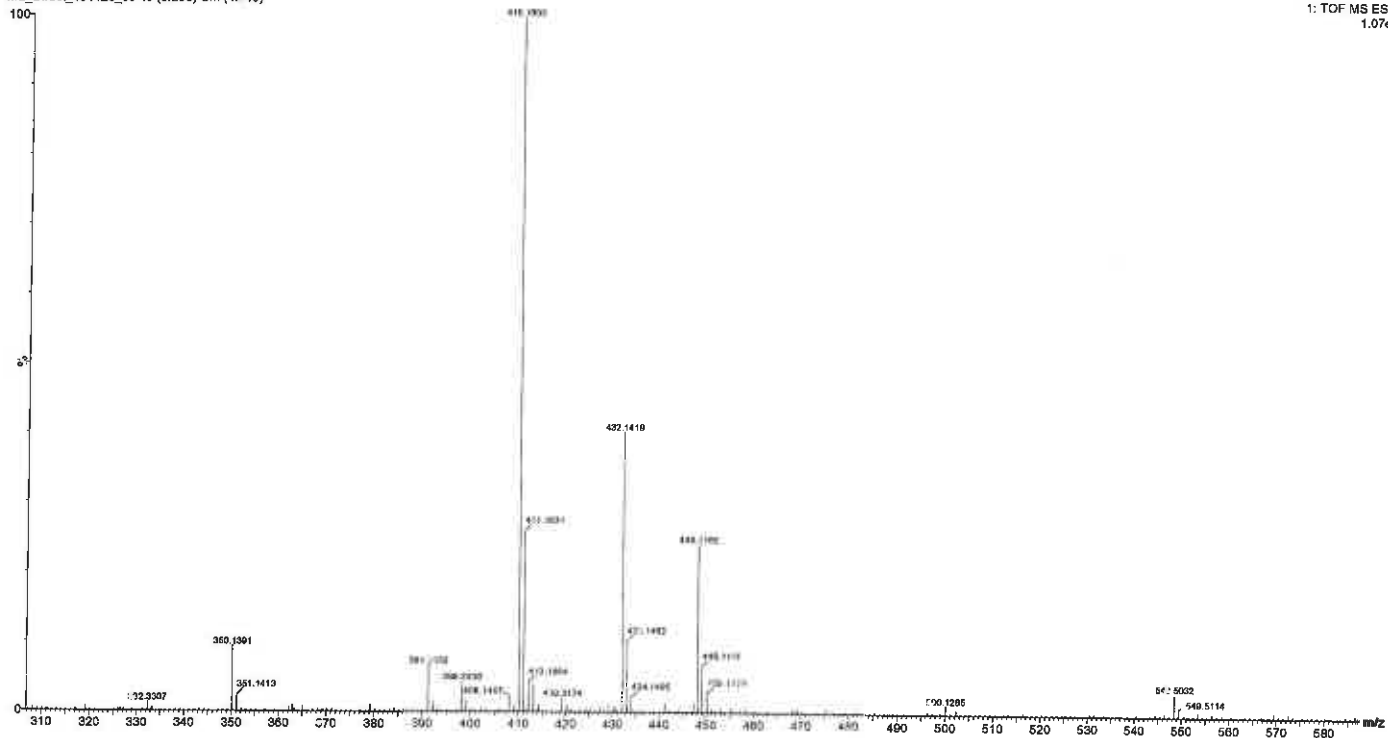


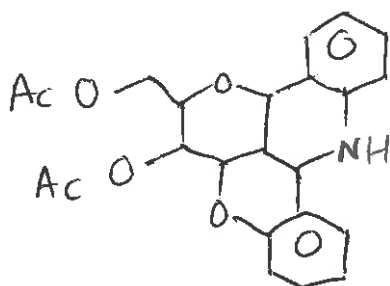
18a

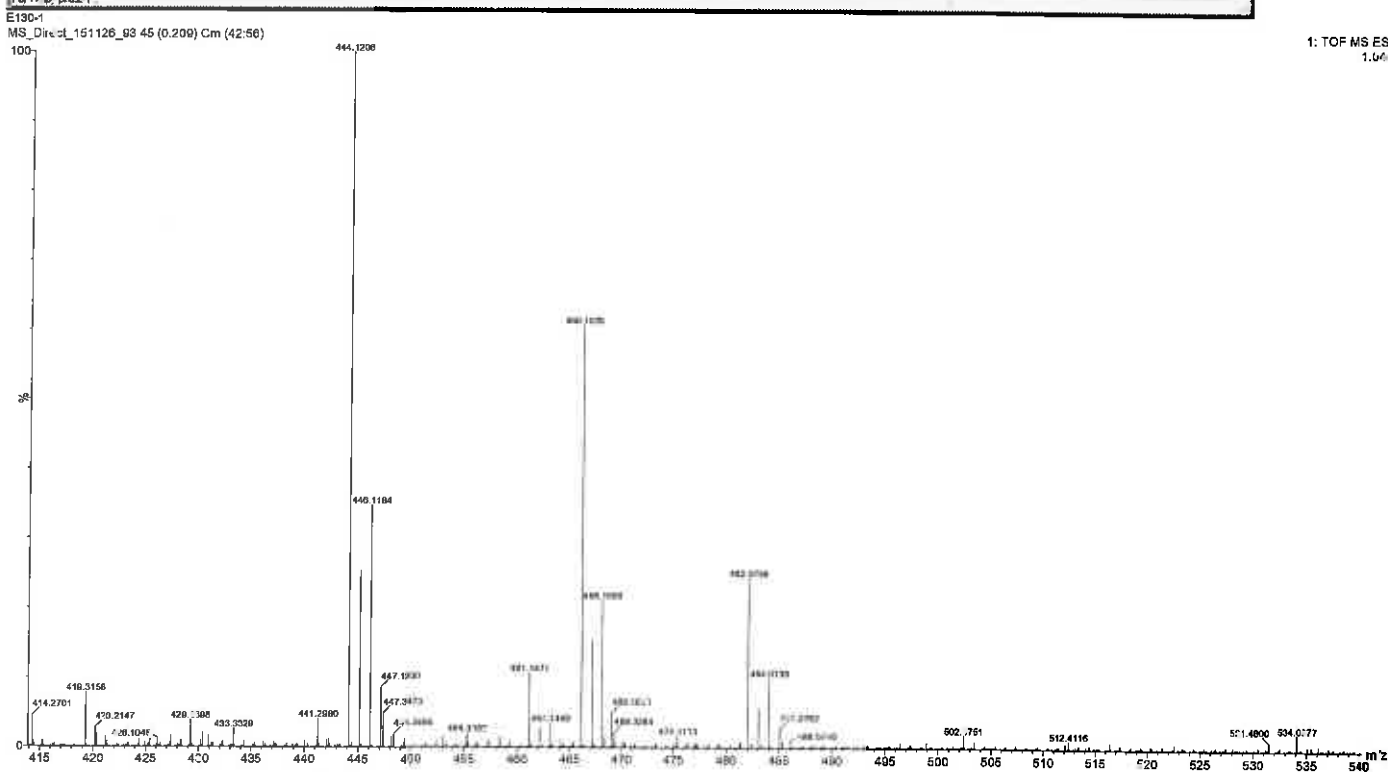
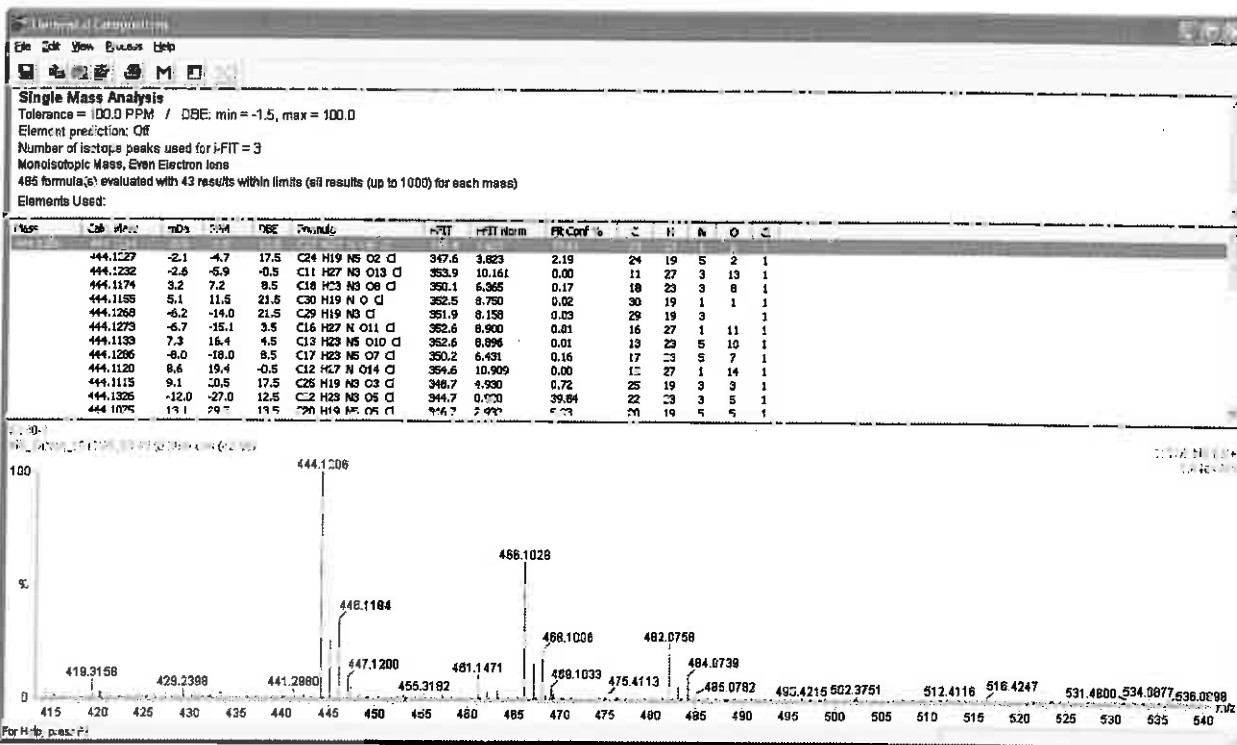


E123-2
MS_Direct_151126_85_45 (0.209) Cm (40.49)

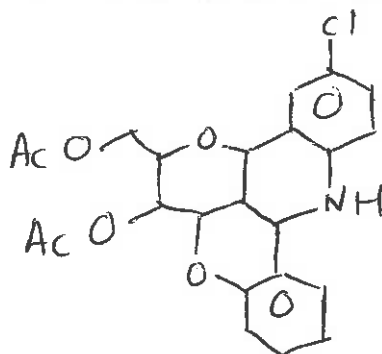


1: TOF MS ES+
1.07e5

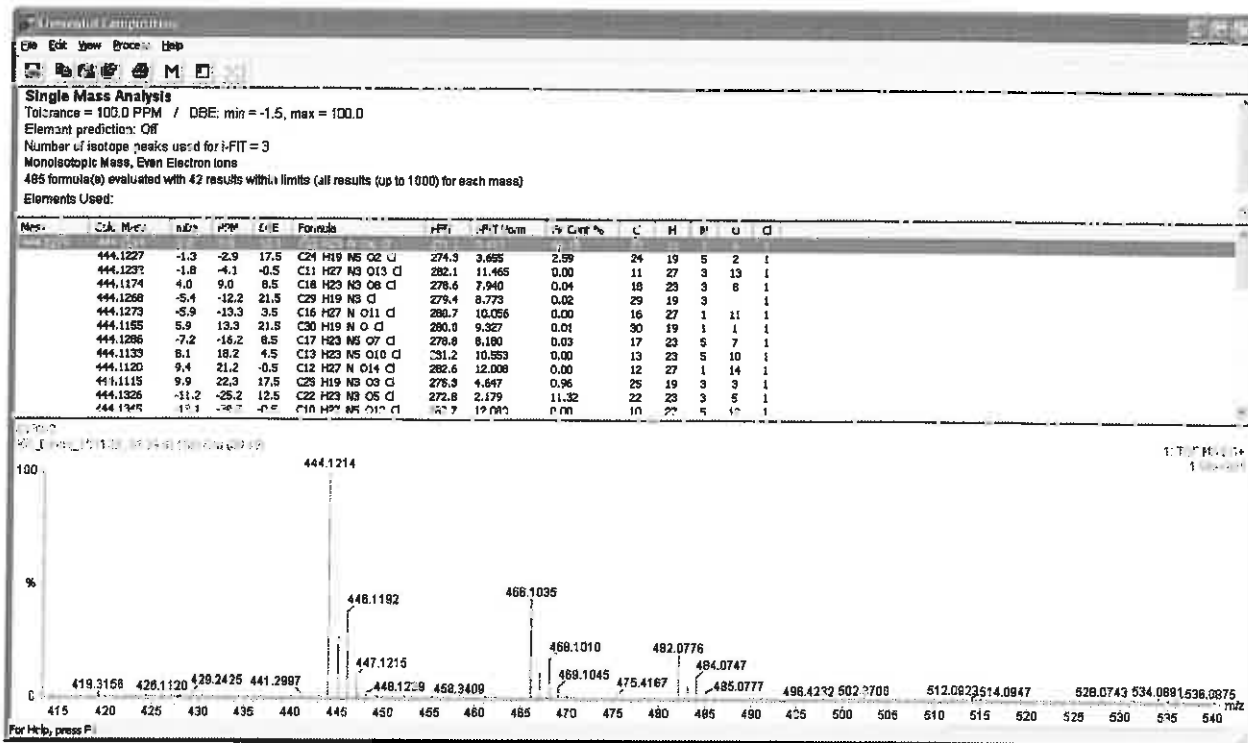




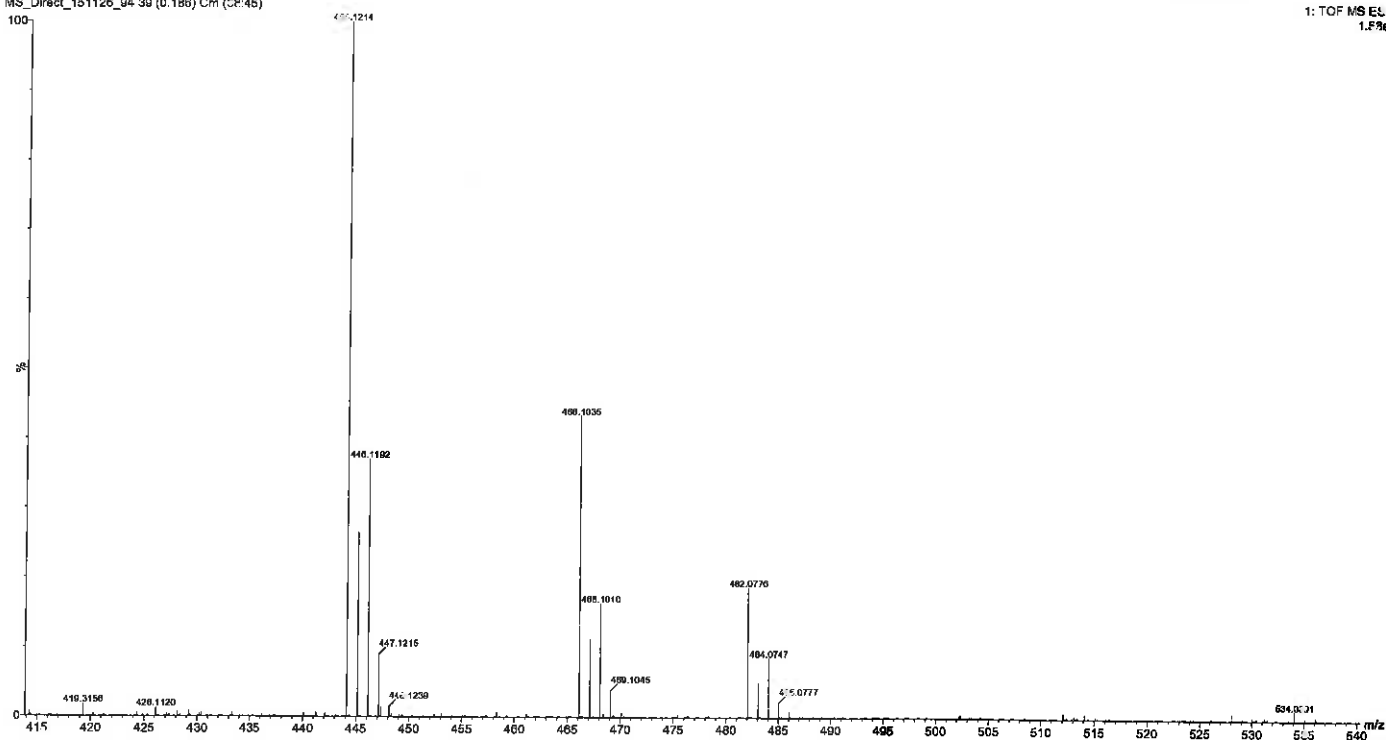
1: TOF MS ES+
1.00e5



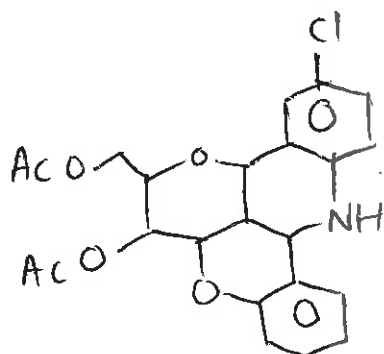
18 C



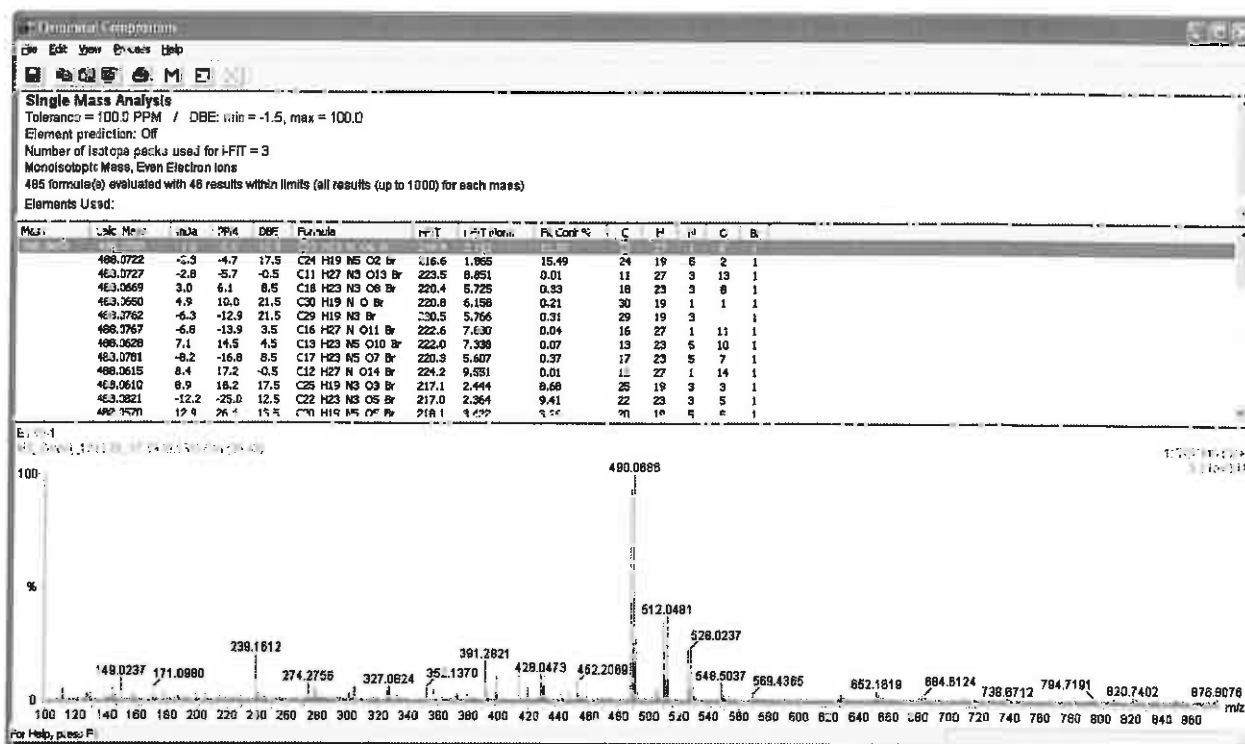
E130-2
MS_Direct_151126_04 39 (0.186) Cm (CR:45)



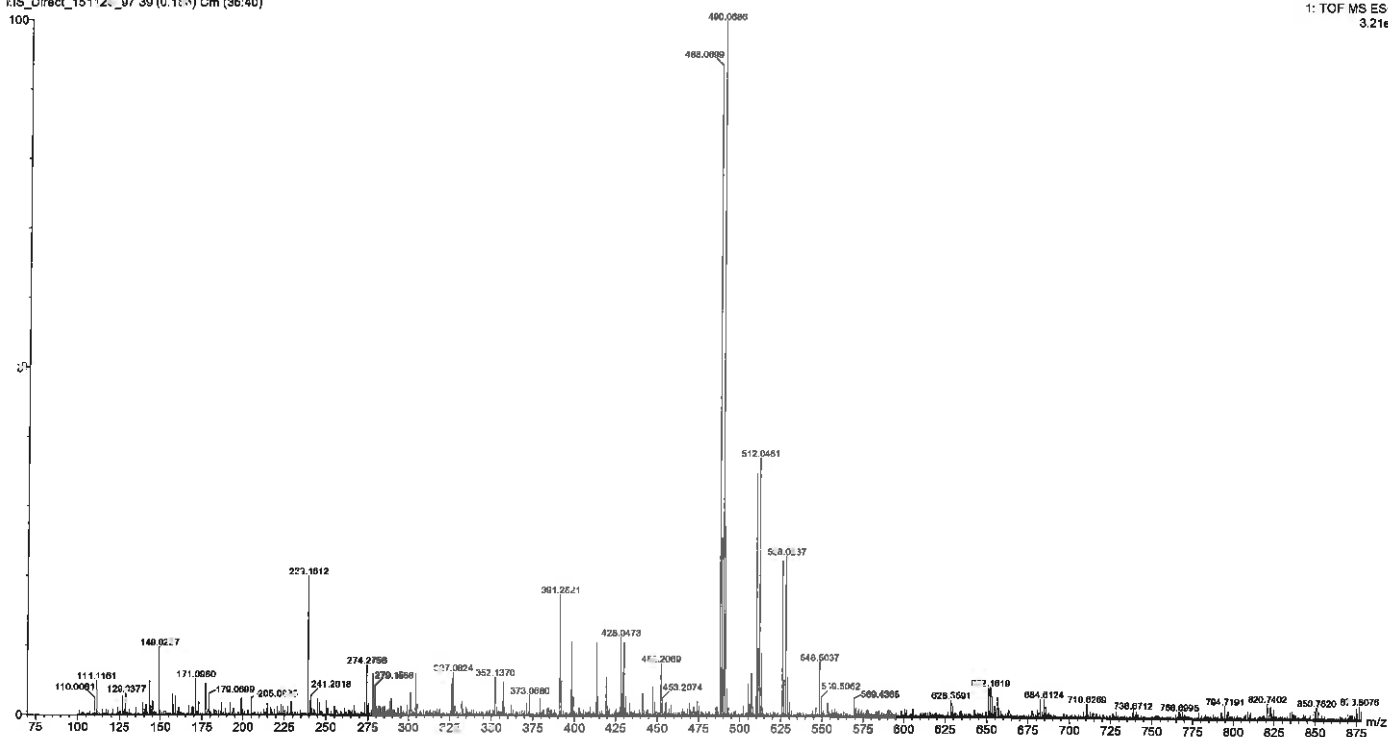
1: TOF MS ES+
1.F966



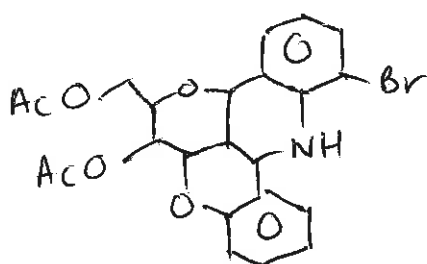
18 C

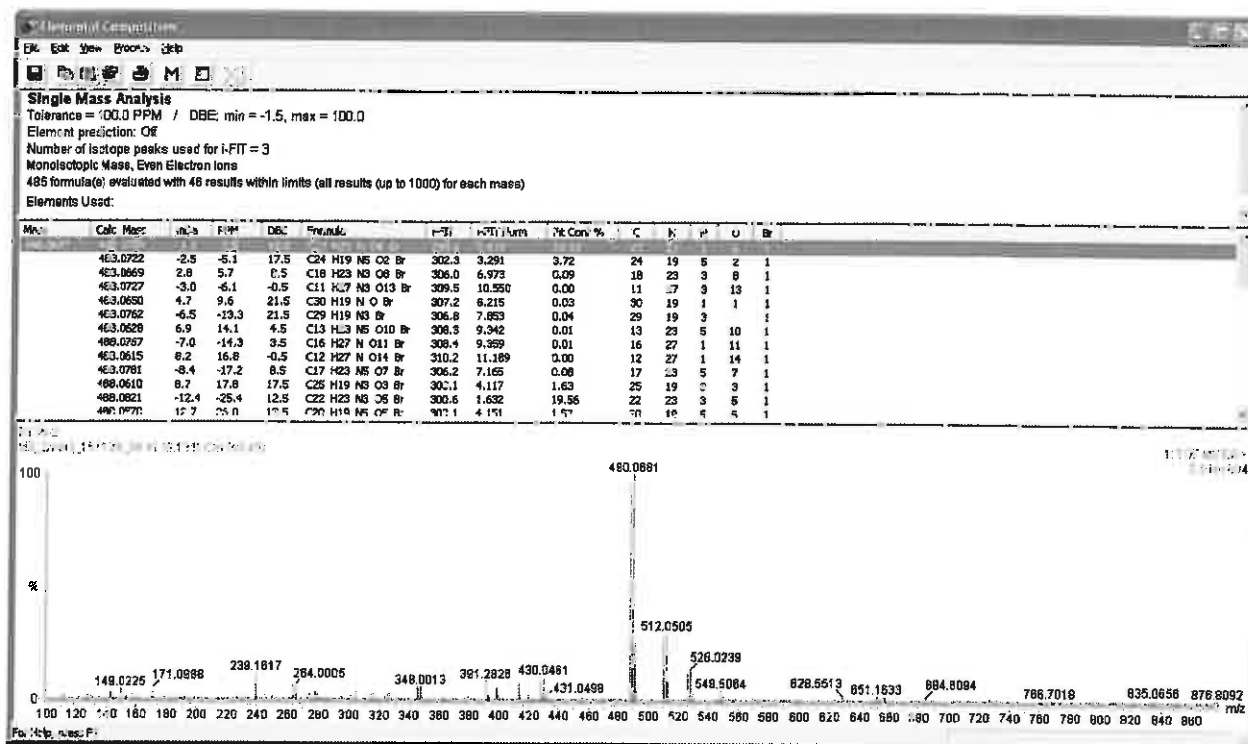


E135-1
MS_Direct_151120_07_39 (0.11e4) Cm (36.40)

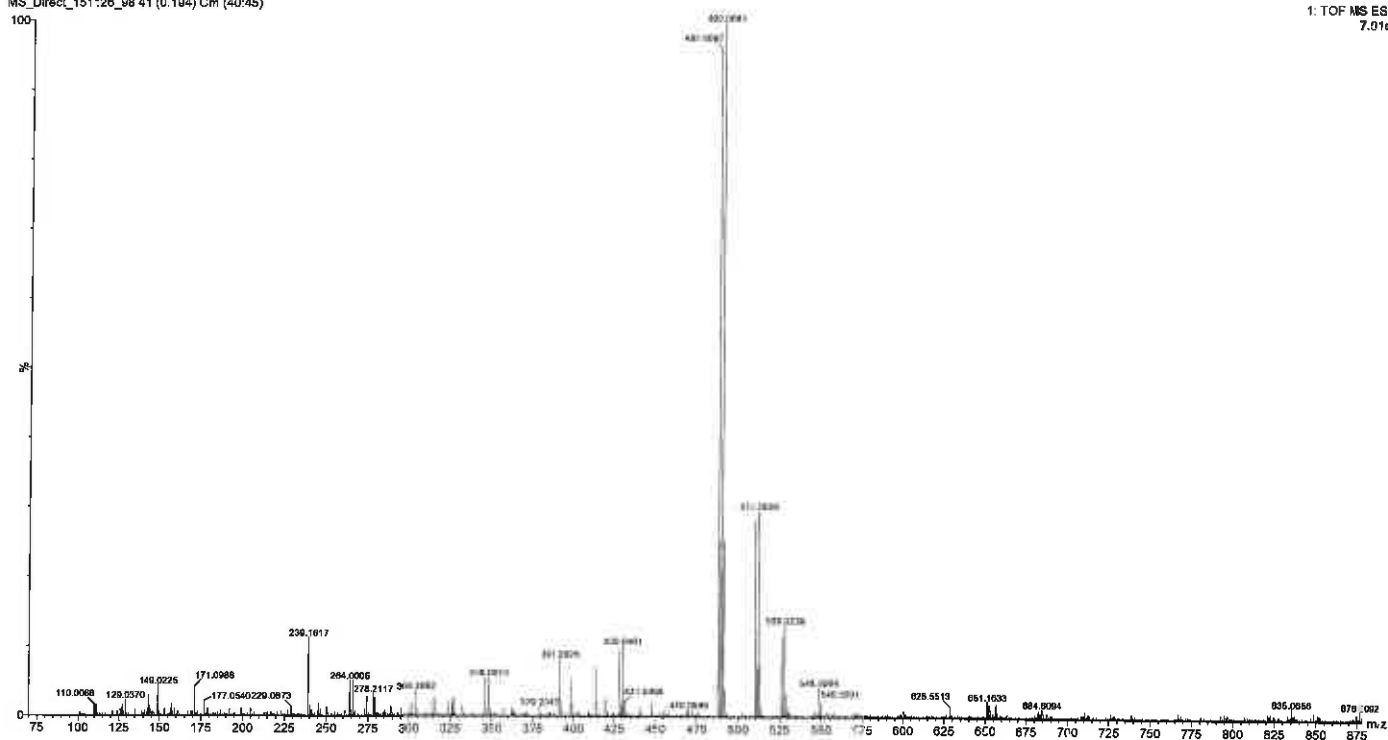


1: TOF MS ES+
3.21e4

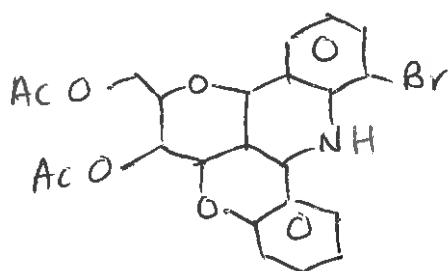




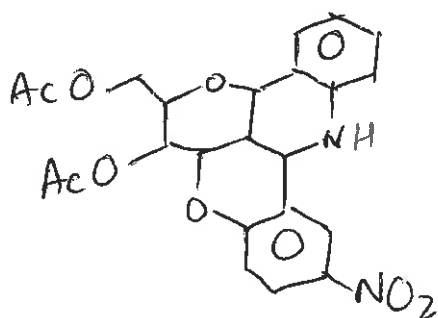
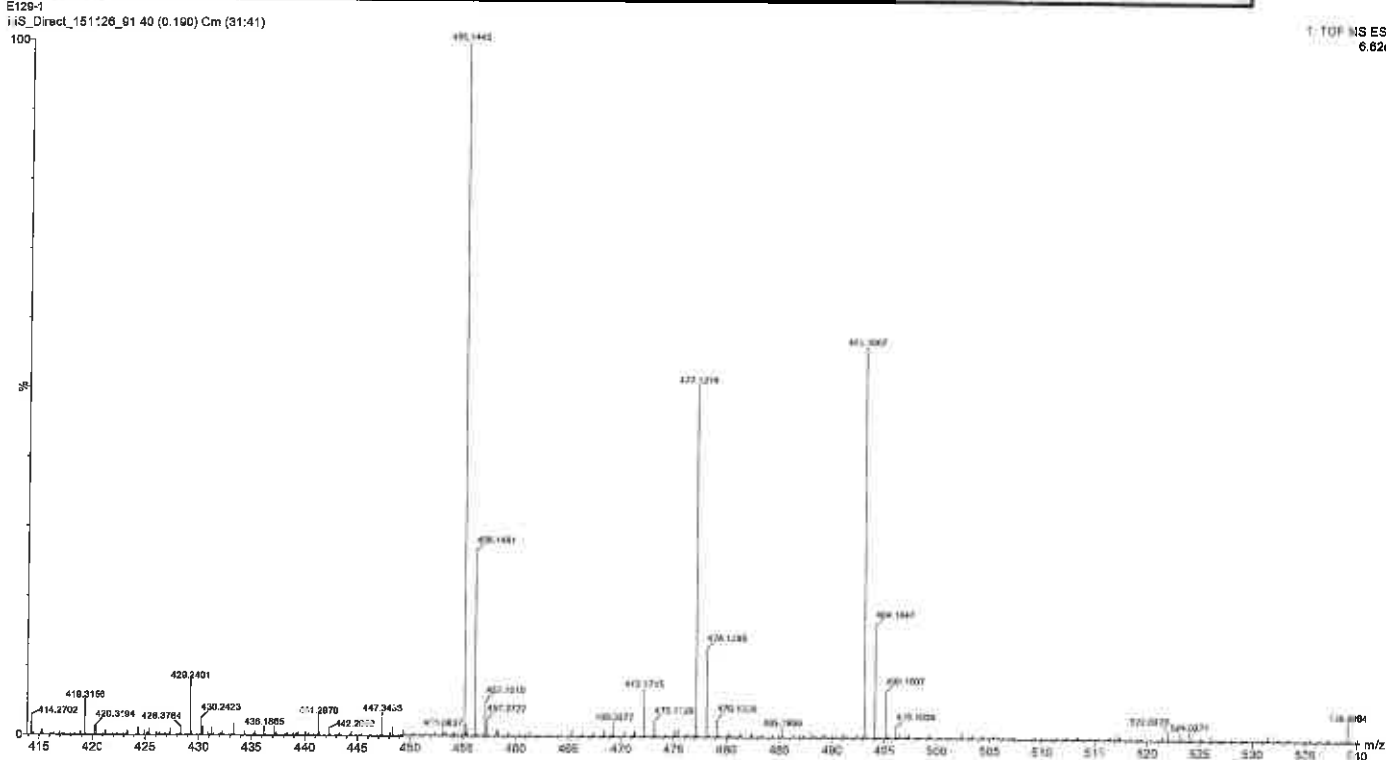
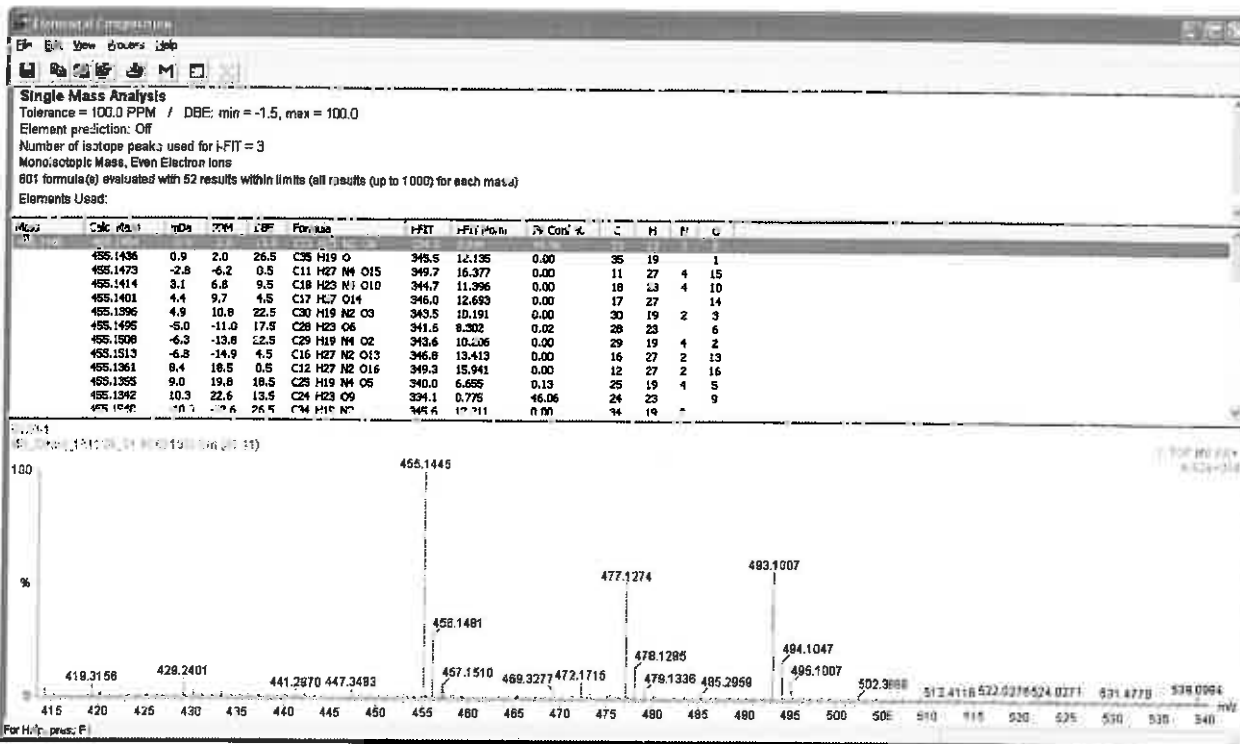
E135-2
MS_Direct_151126_98 41 (0.194) Cm (40:45)



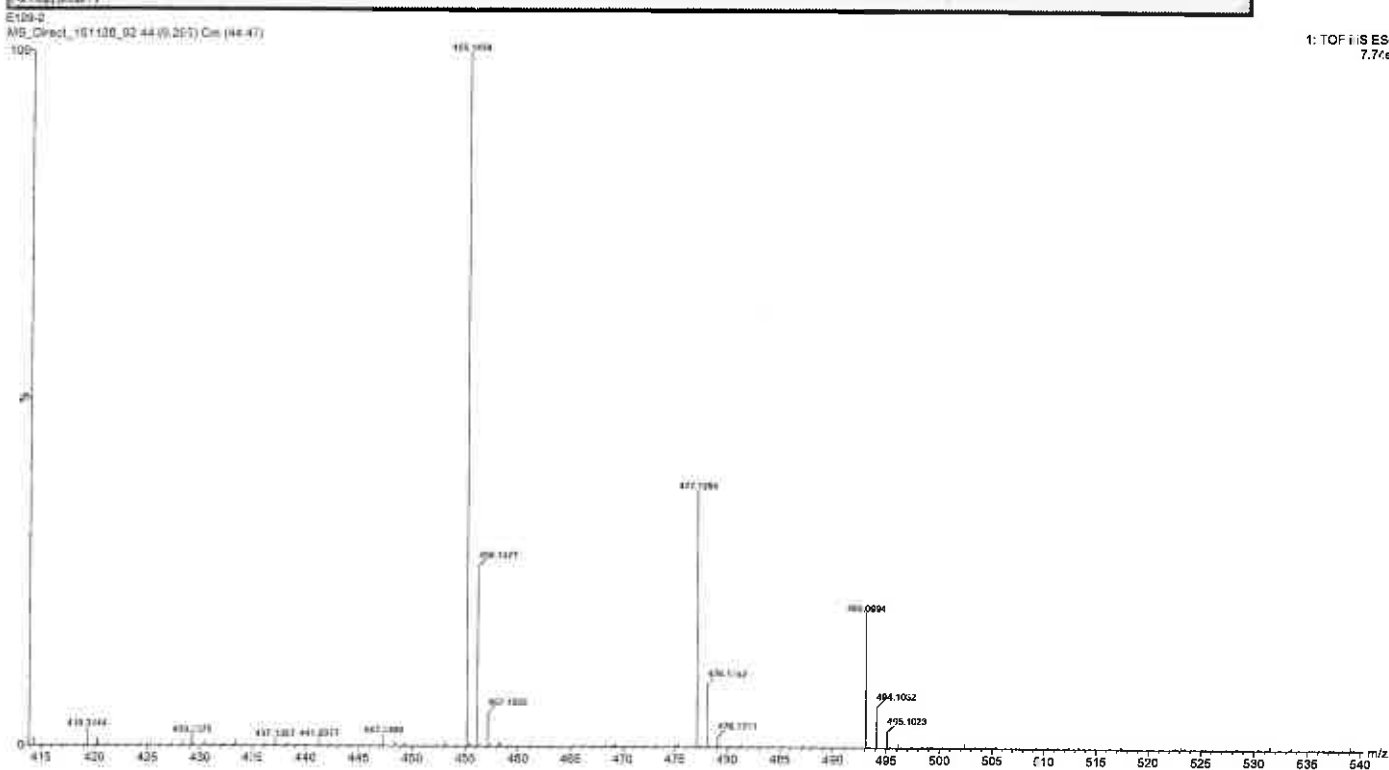
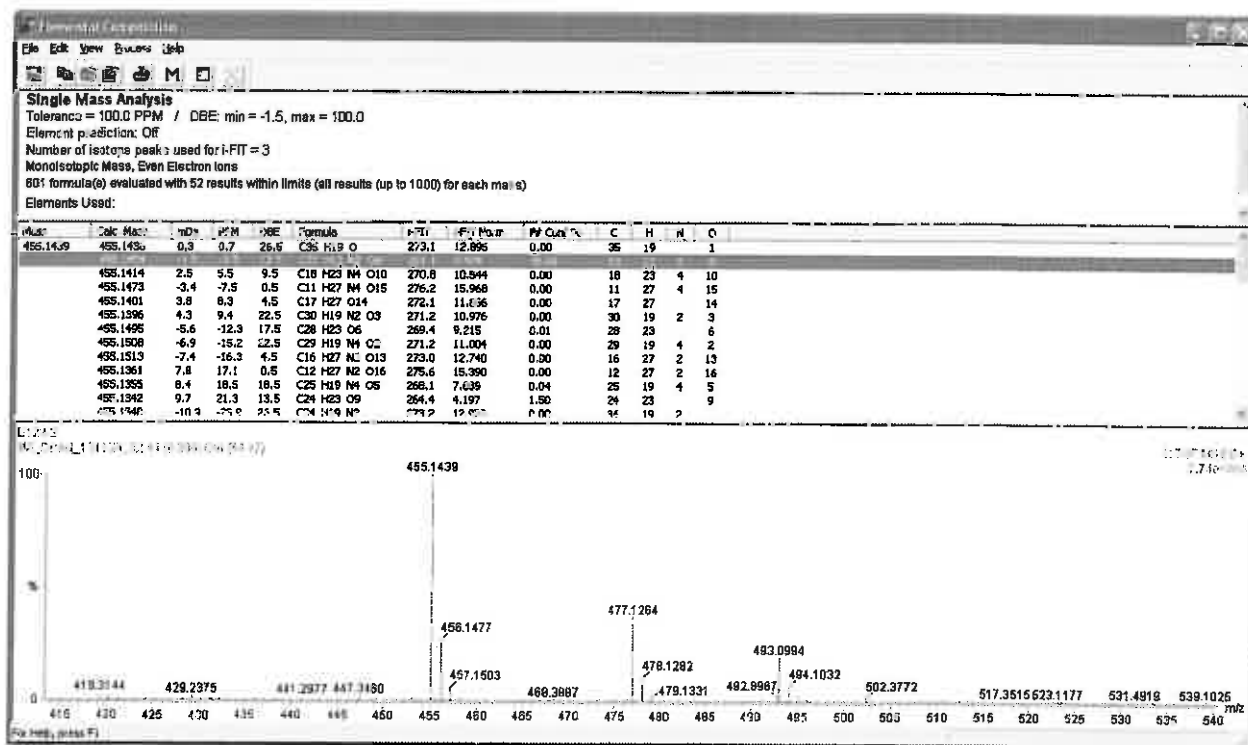
1: TOF MS ES+
7.01e4



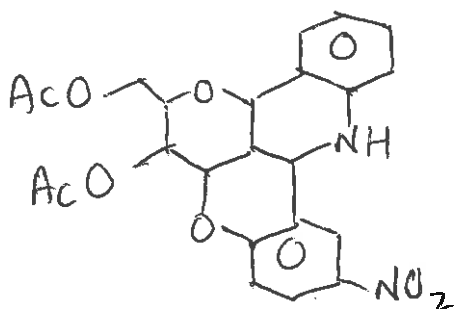
18 e.

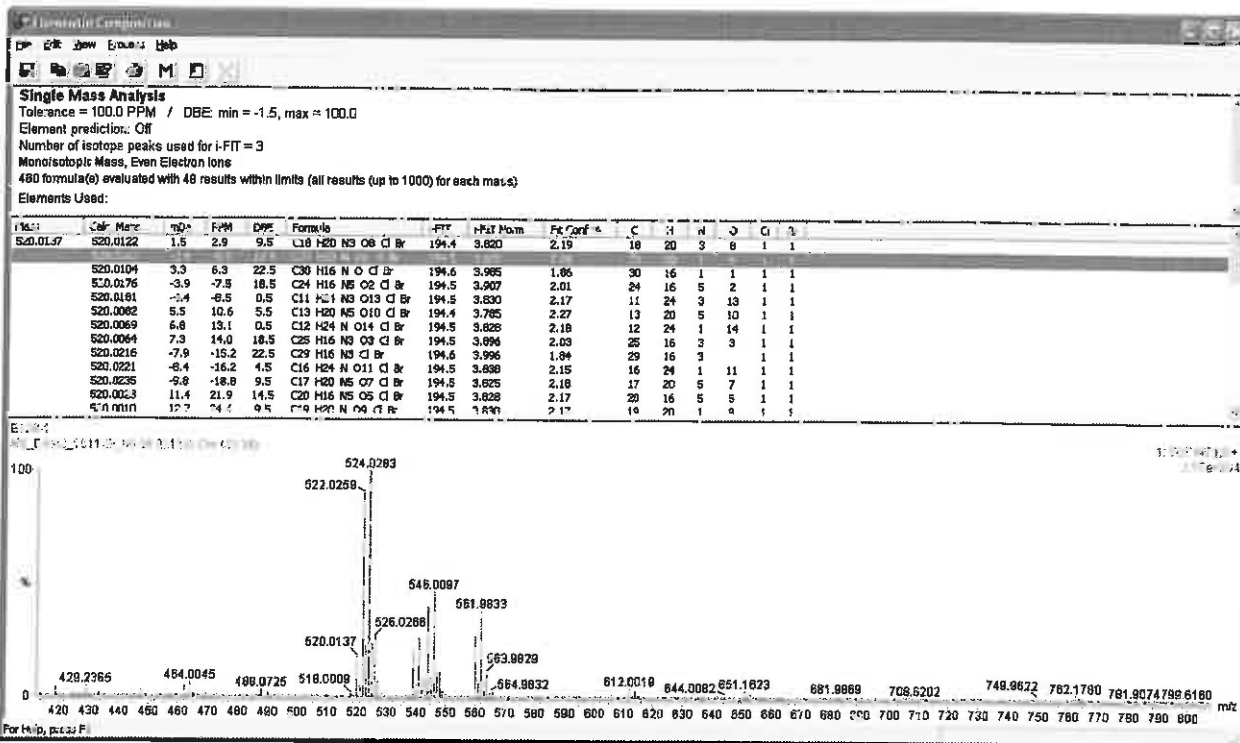


18 h.

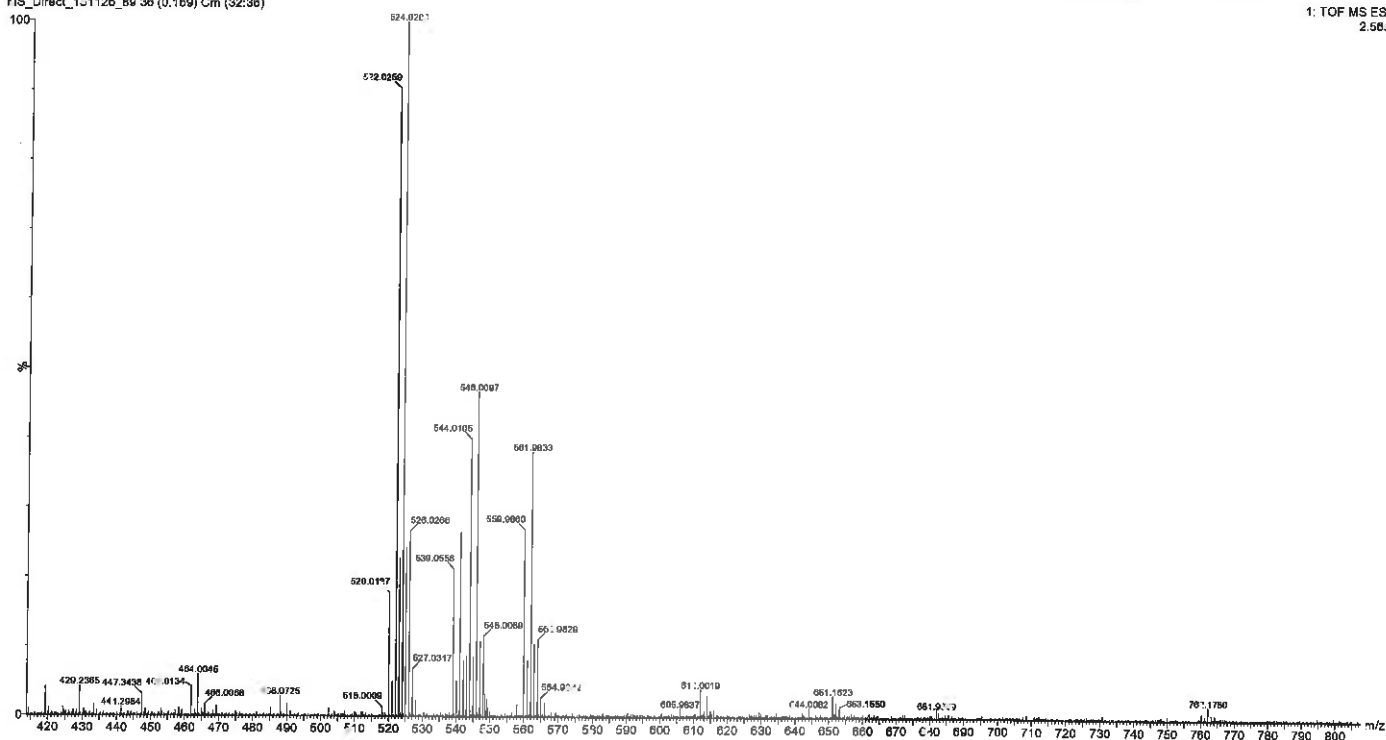


1: TOF MS ES+
7.7/e4

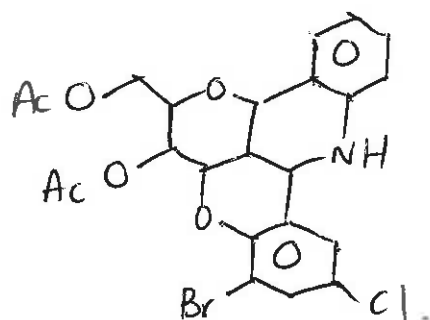




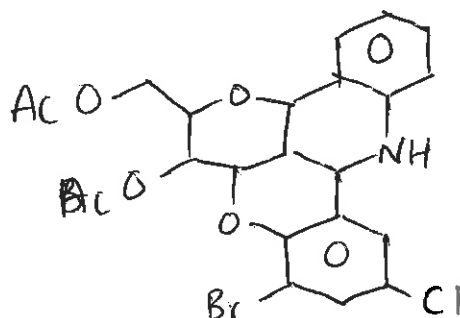
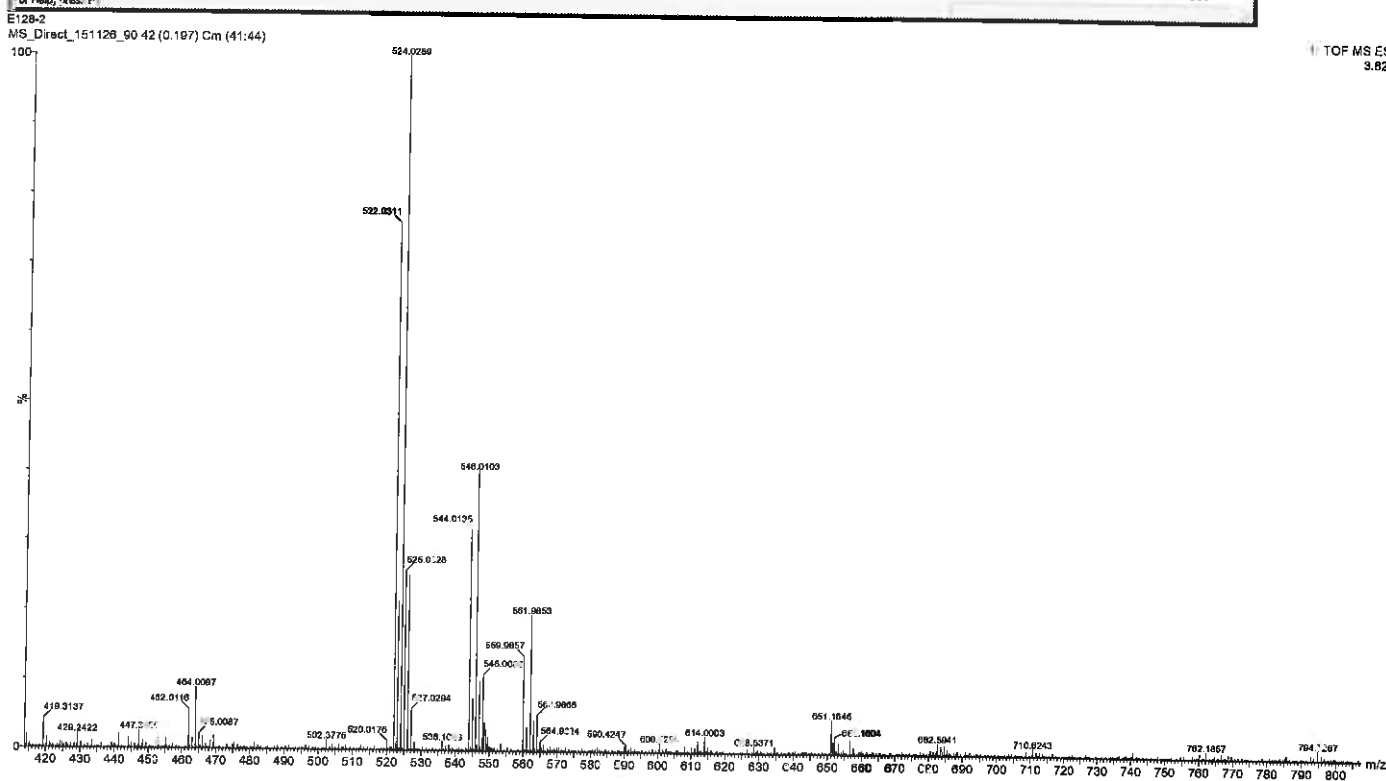
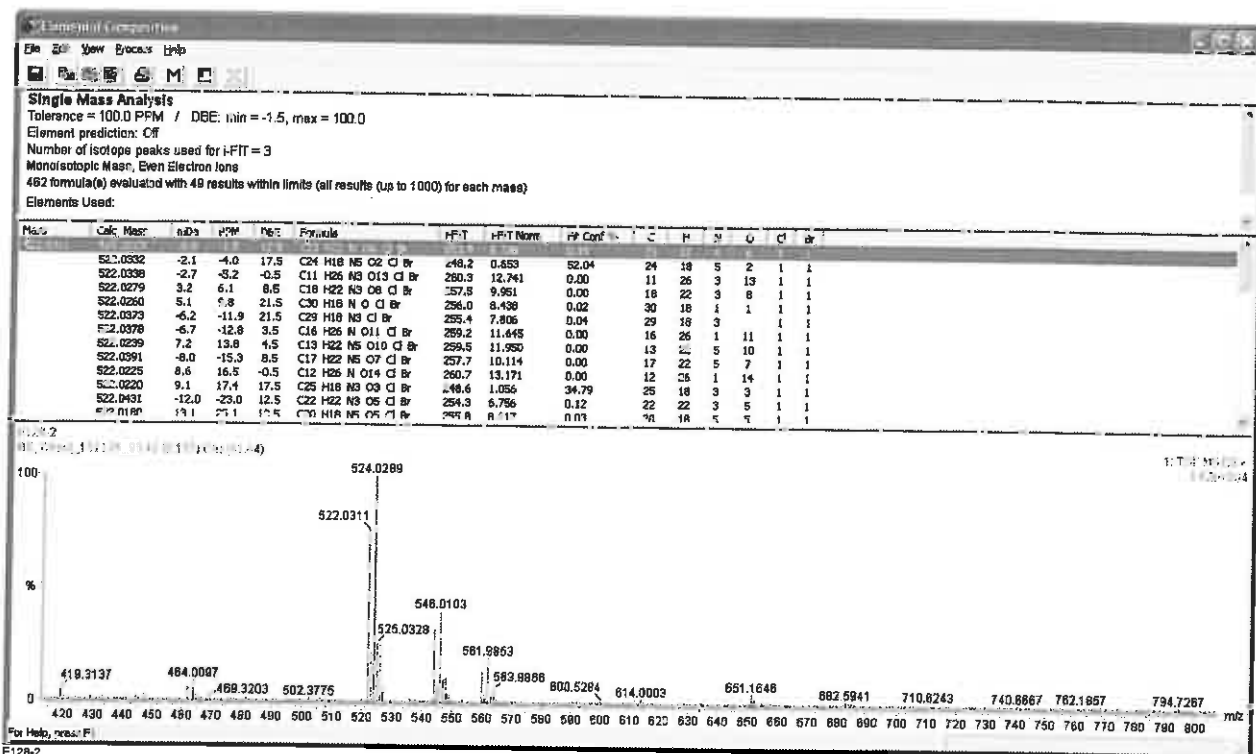
For MS/MS, see 32 F1
E128-1
MS_Direct_151126_88_38 (0.169) Cm (32:38)



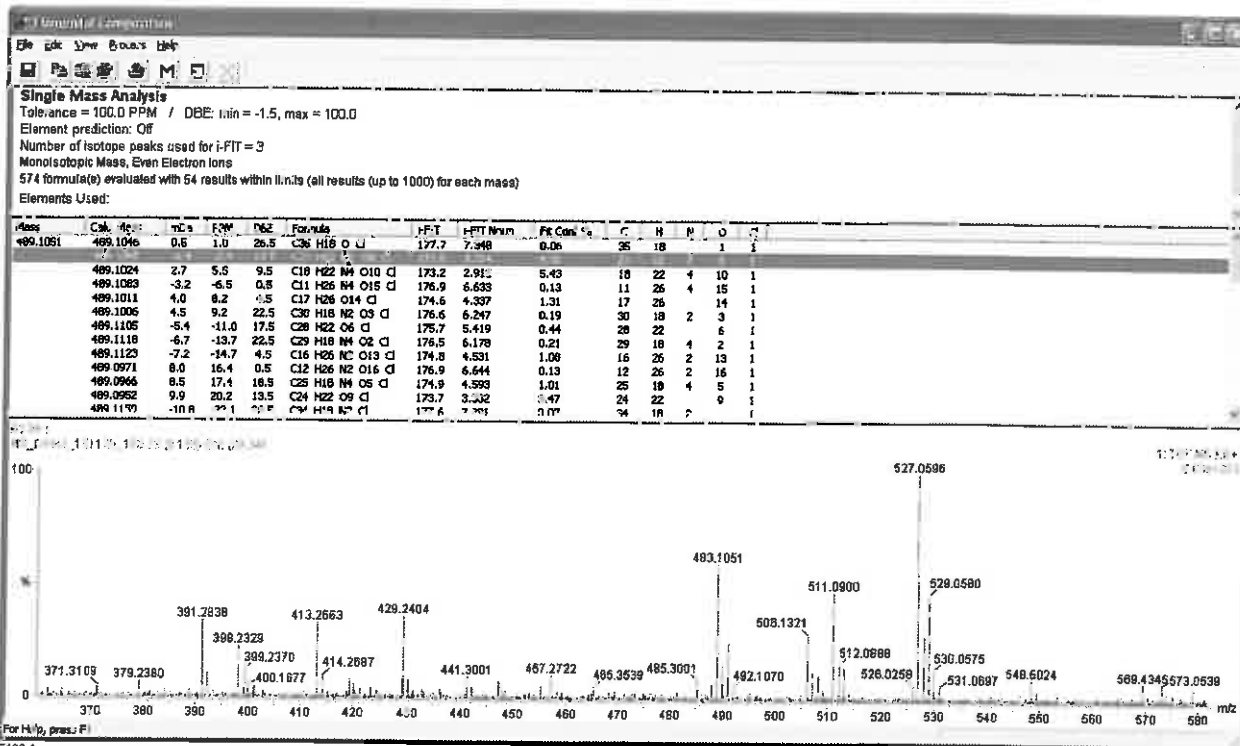
1: TOF MS ES+
2.5834



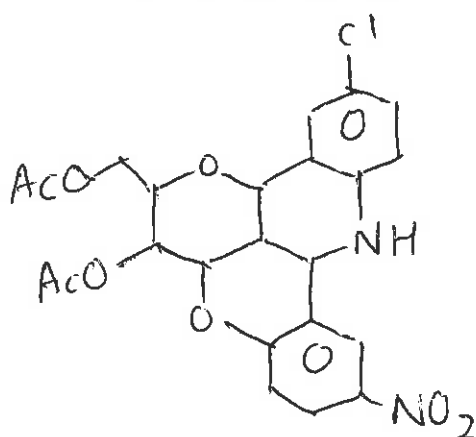
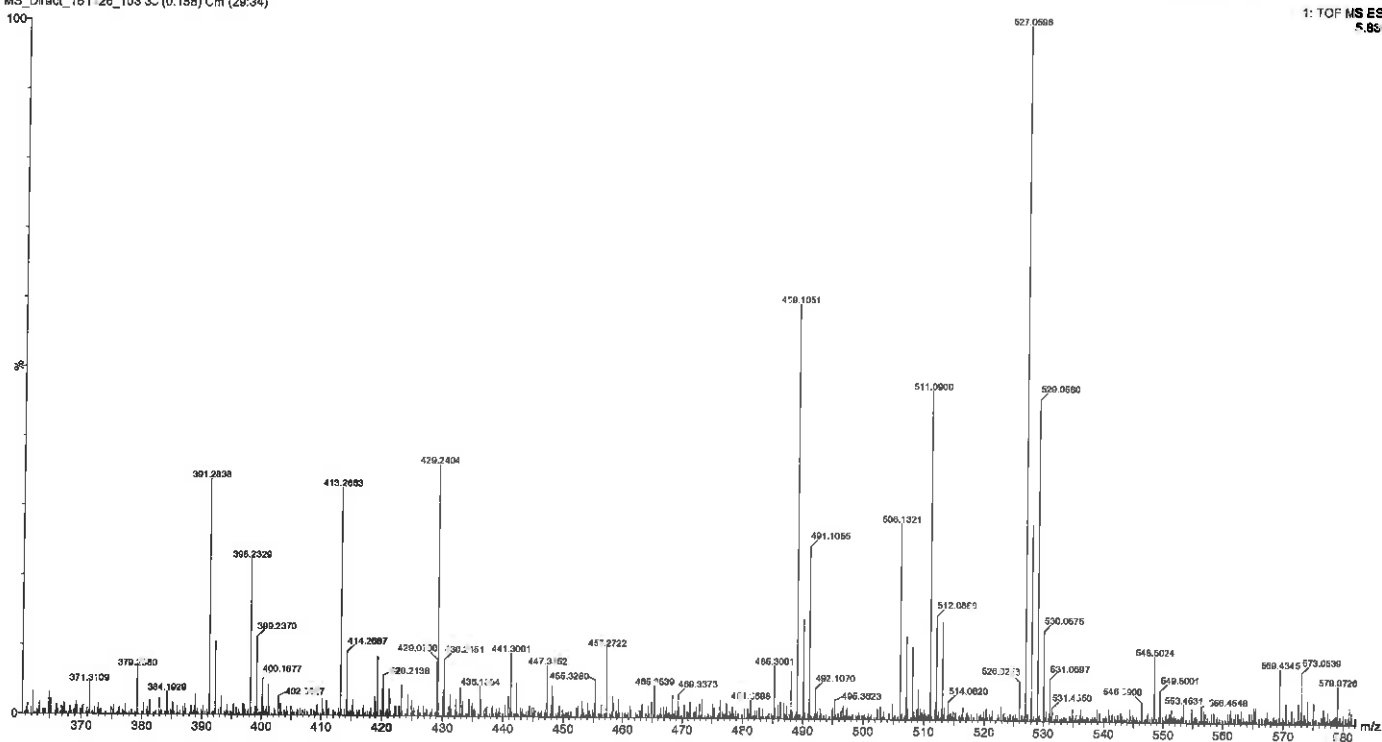
18 i

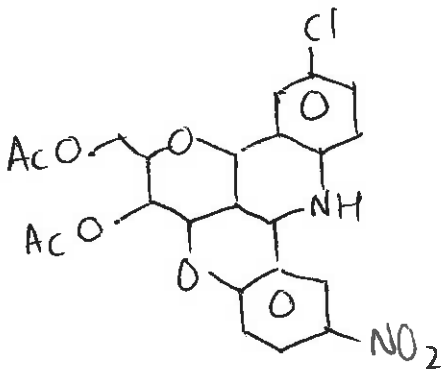
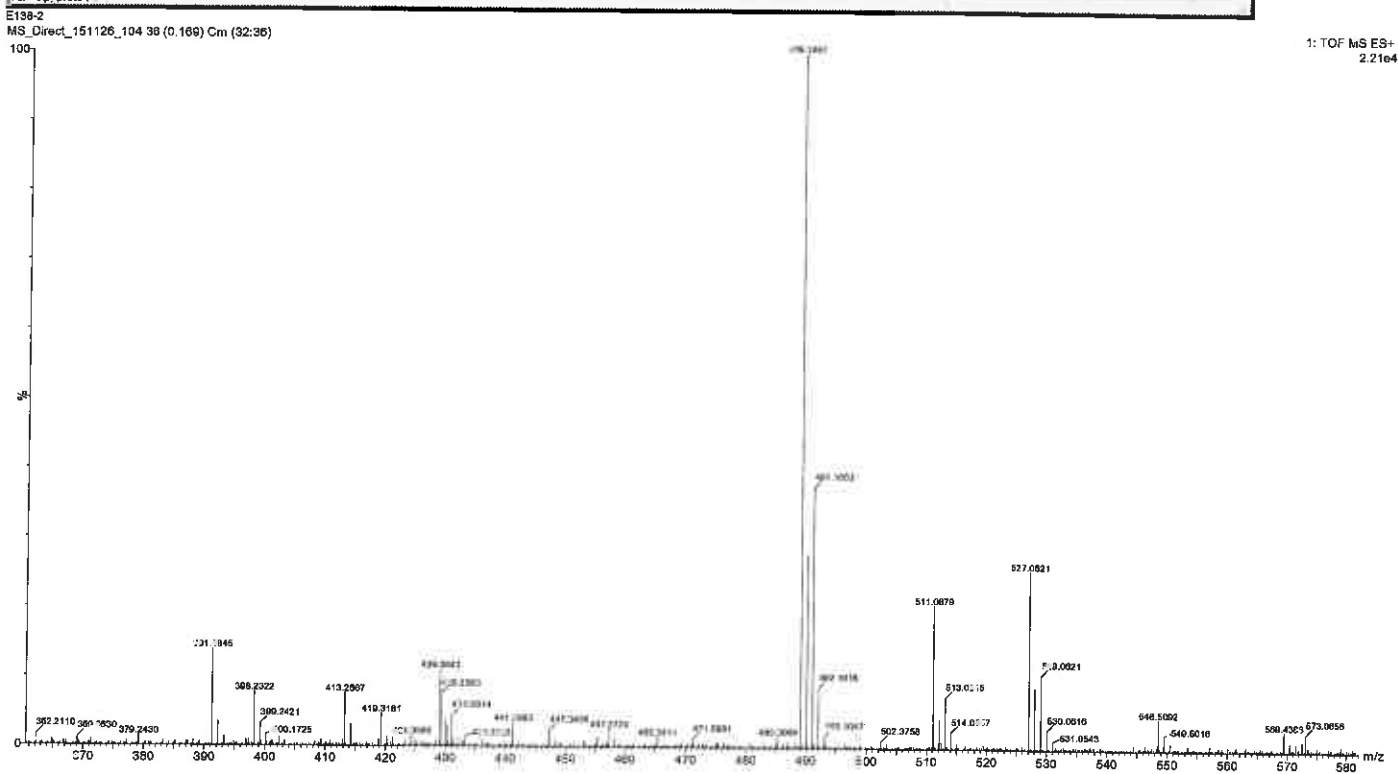
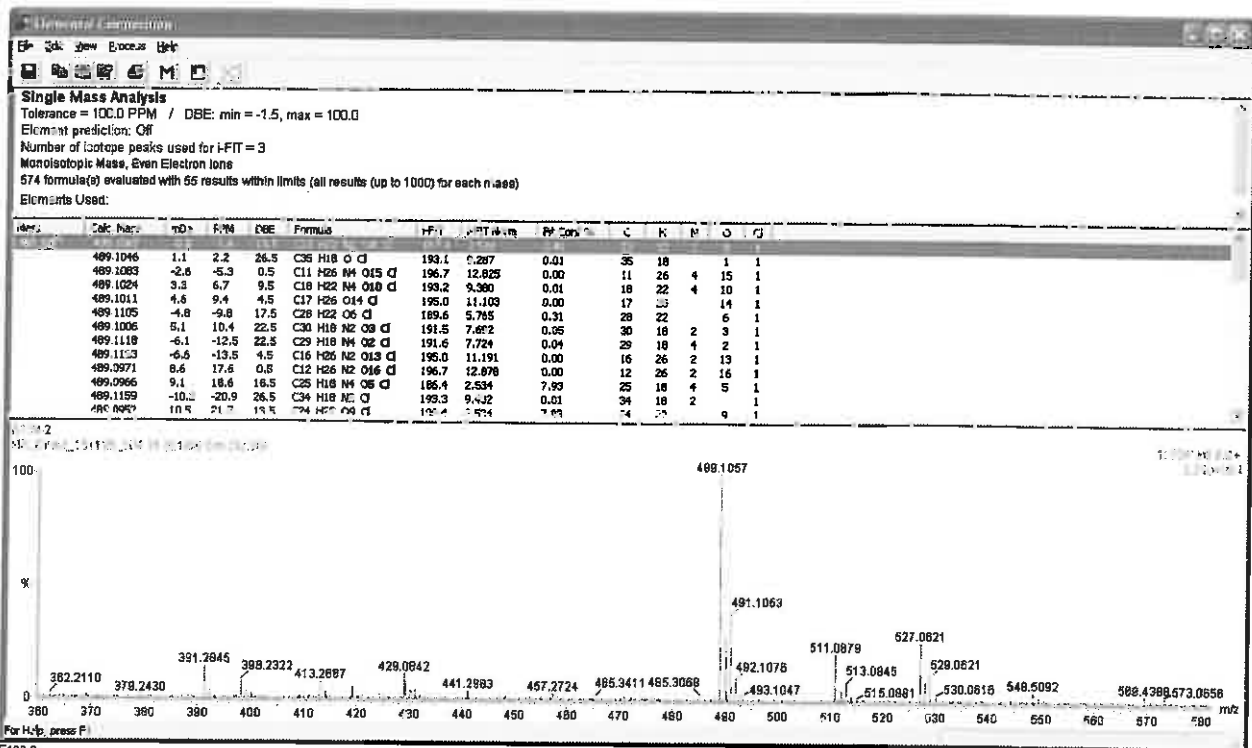


18 i

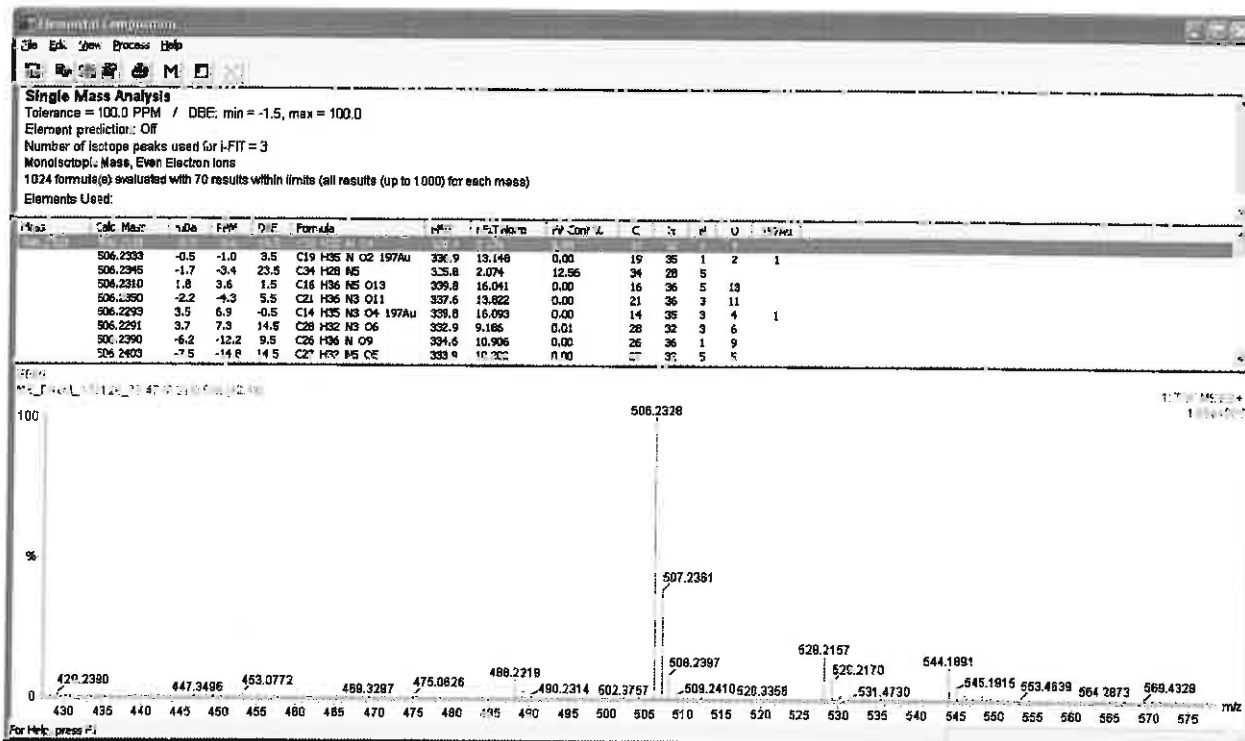


1: TOF MS ES+
5.85.3

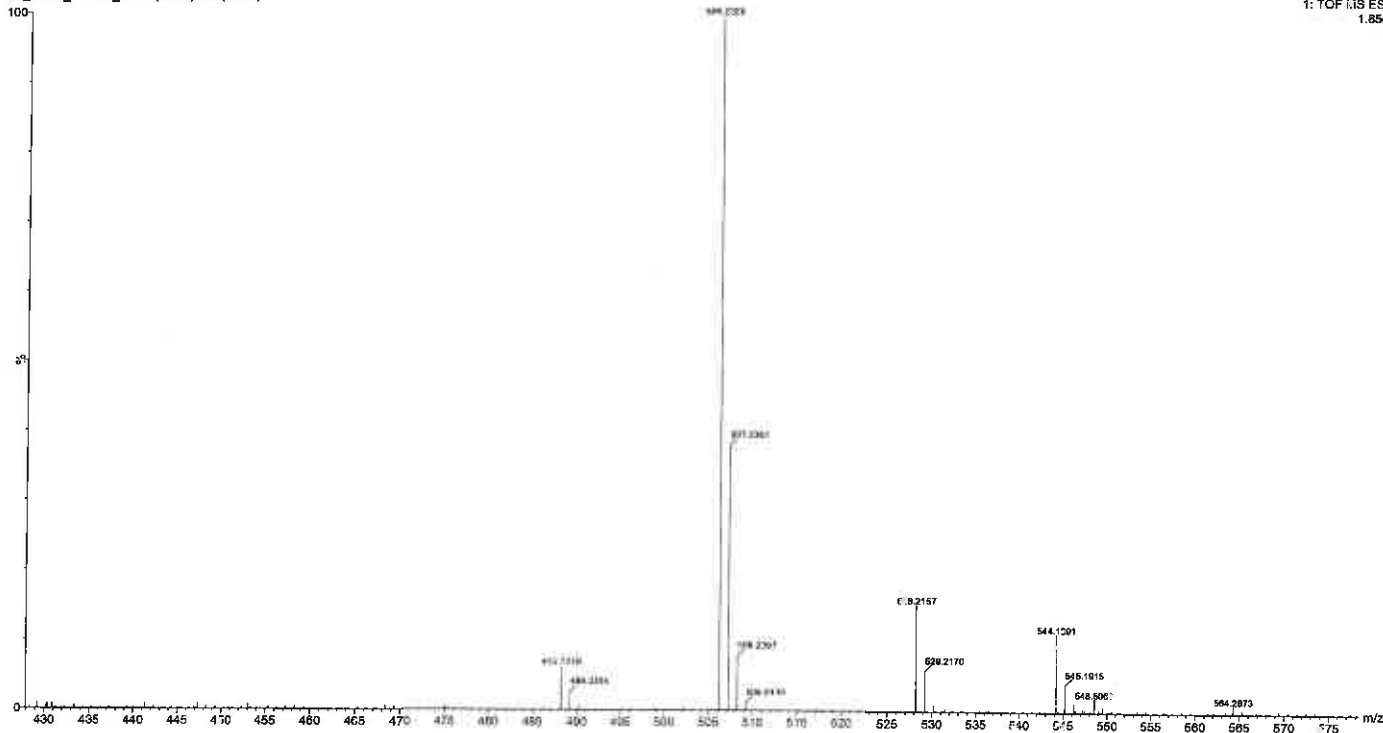




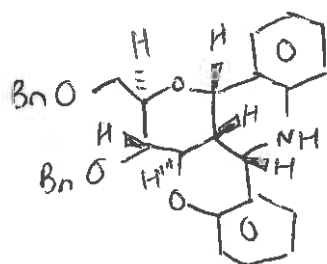
18 K.



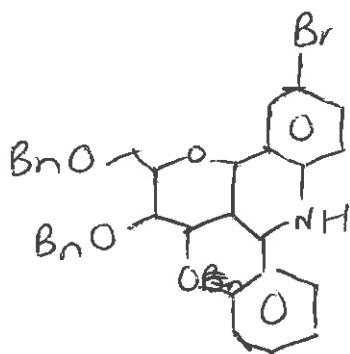
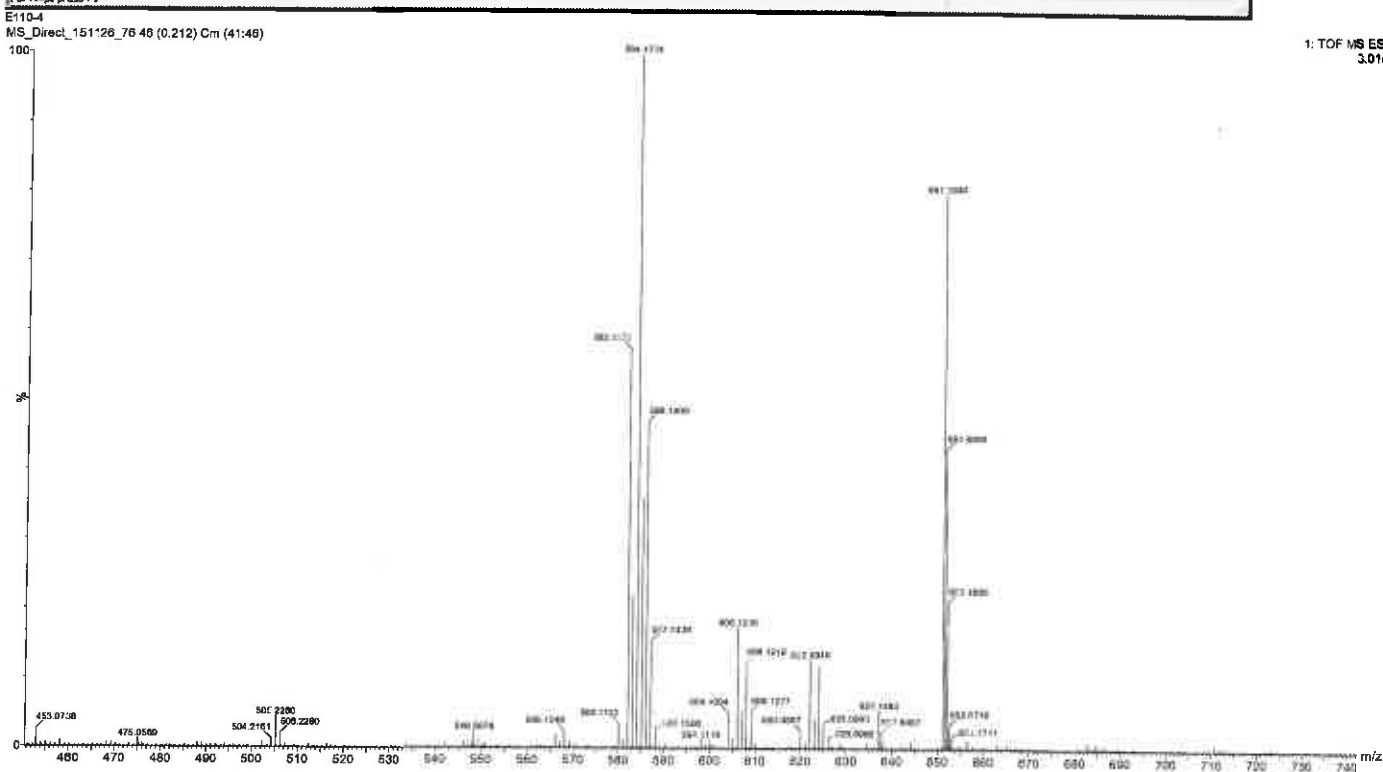
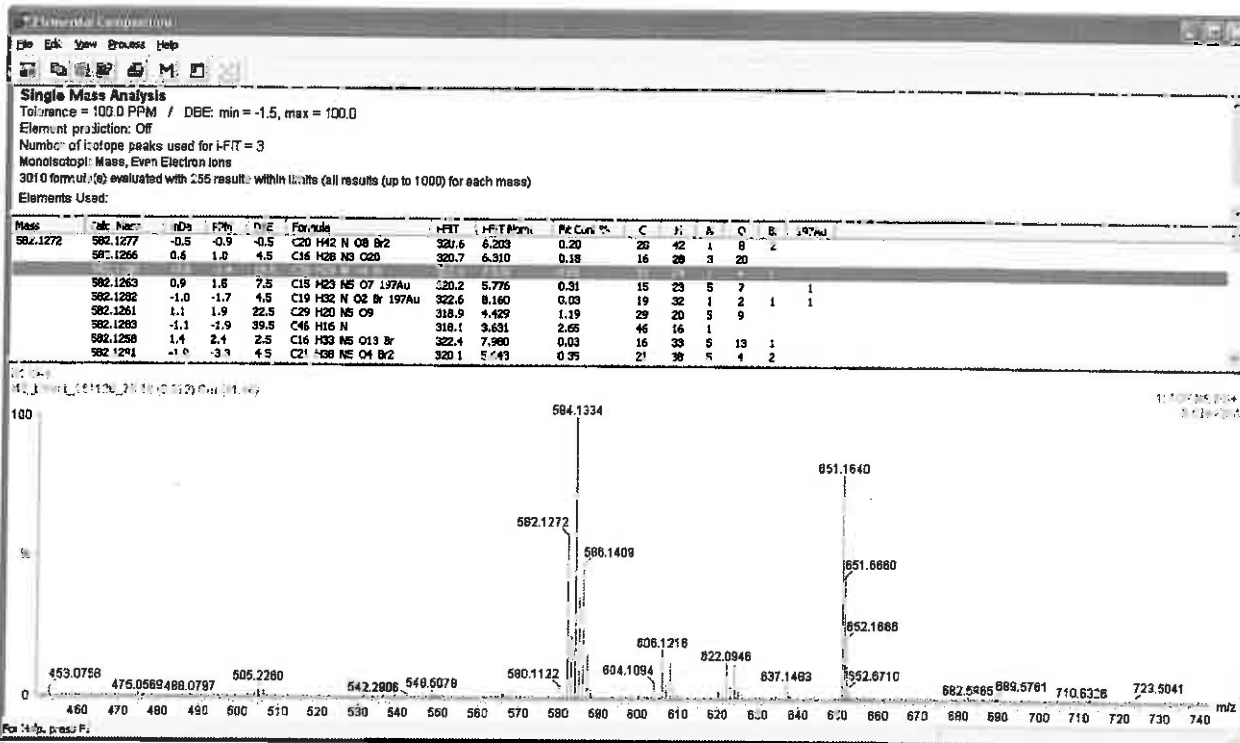
For Help, press F1
E065
NIS_Direct_151126_75_47 (0.218) Cm (42:48)

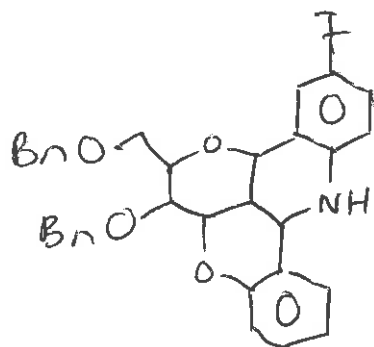
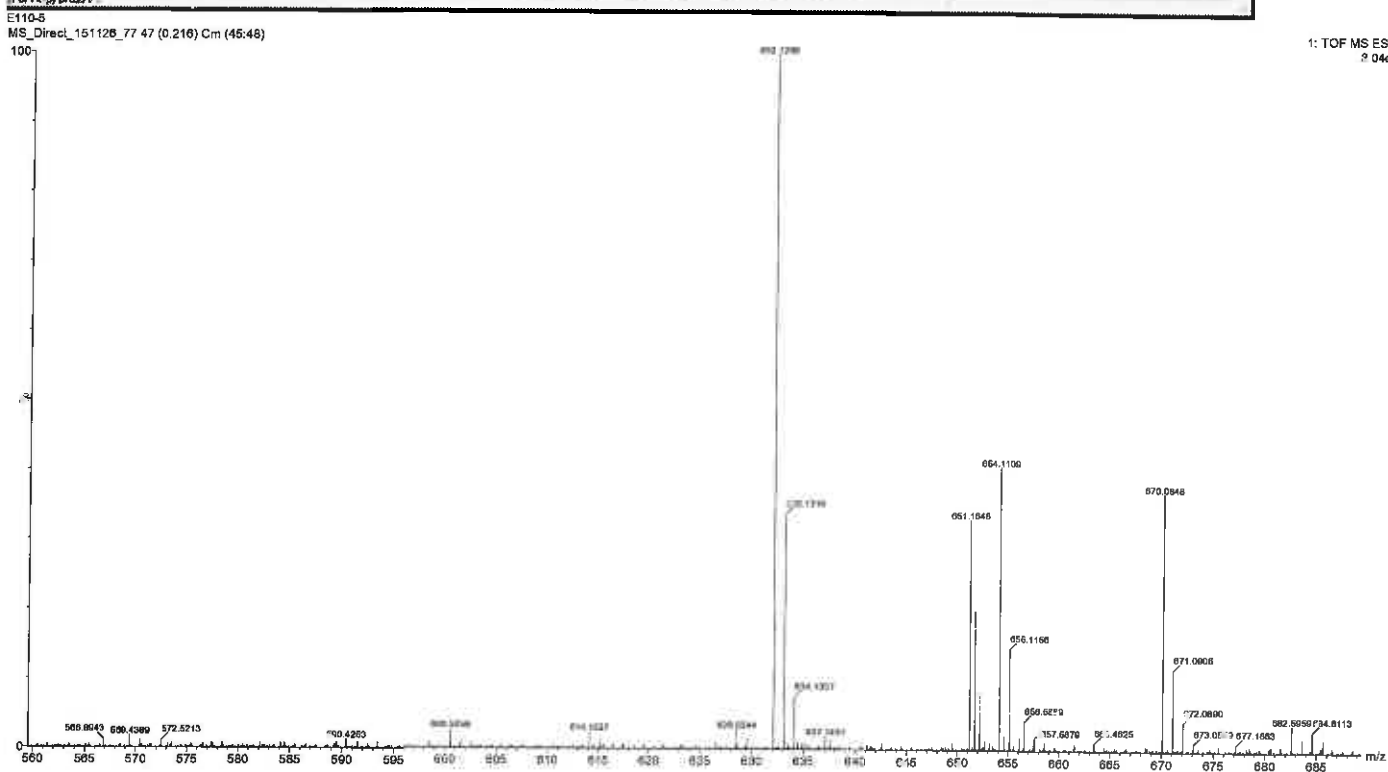
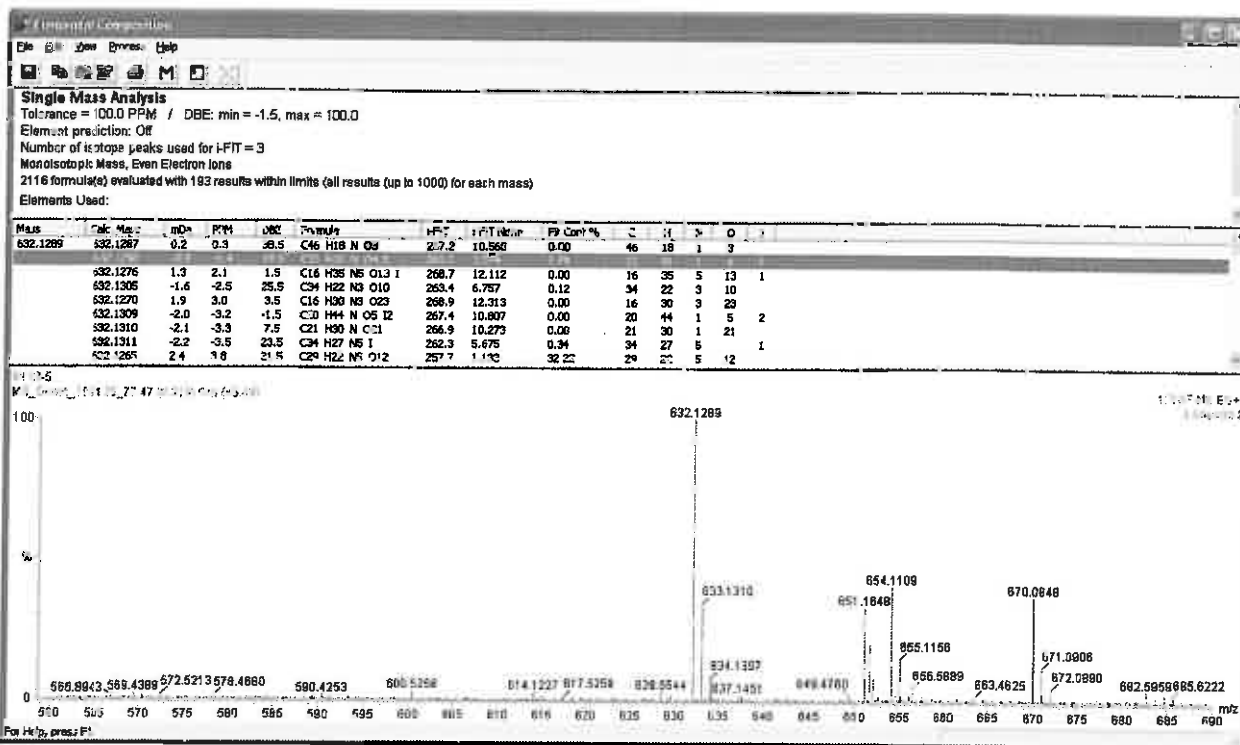


1: TOF MS ES+
1.85e5

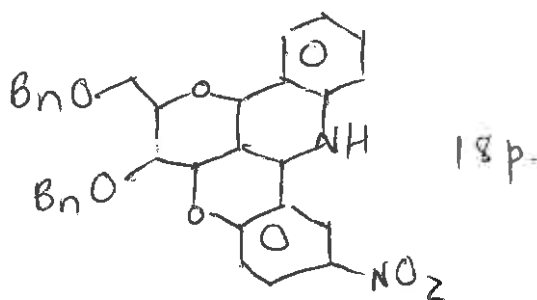
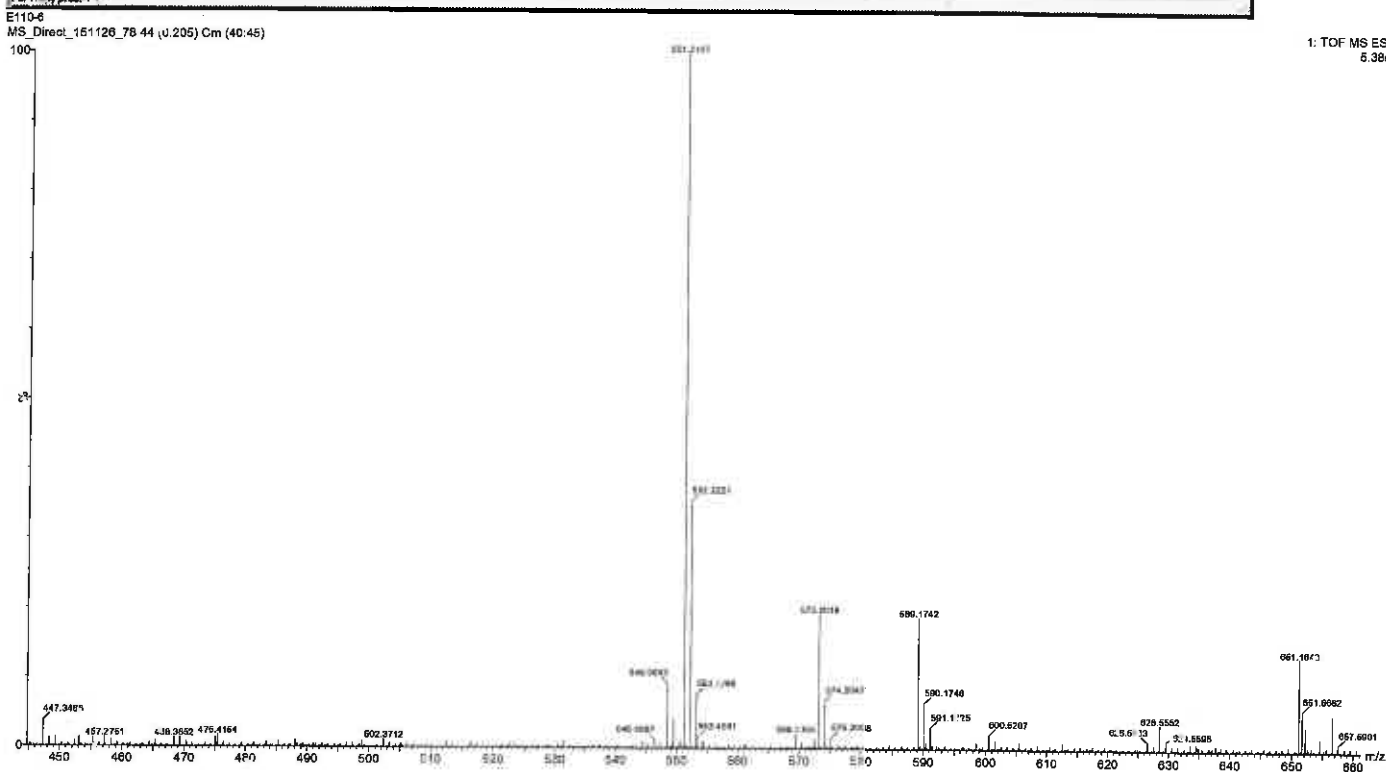
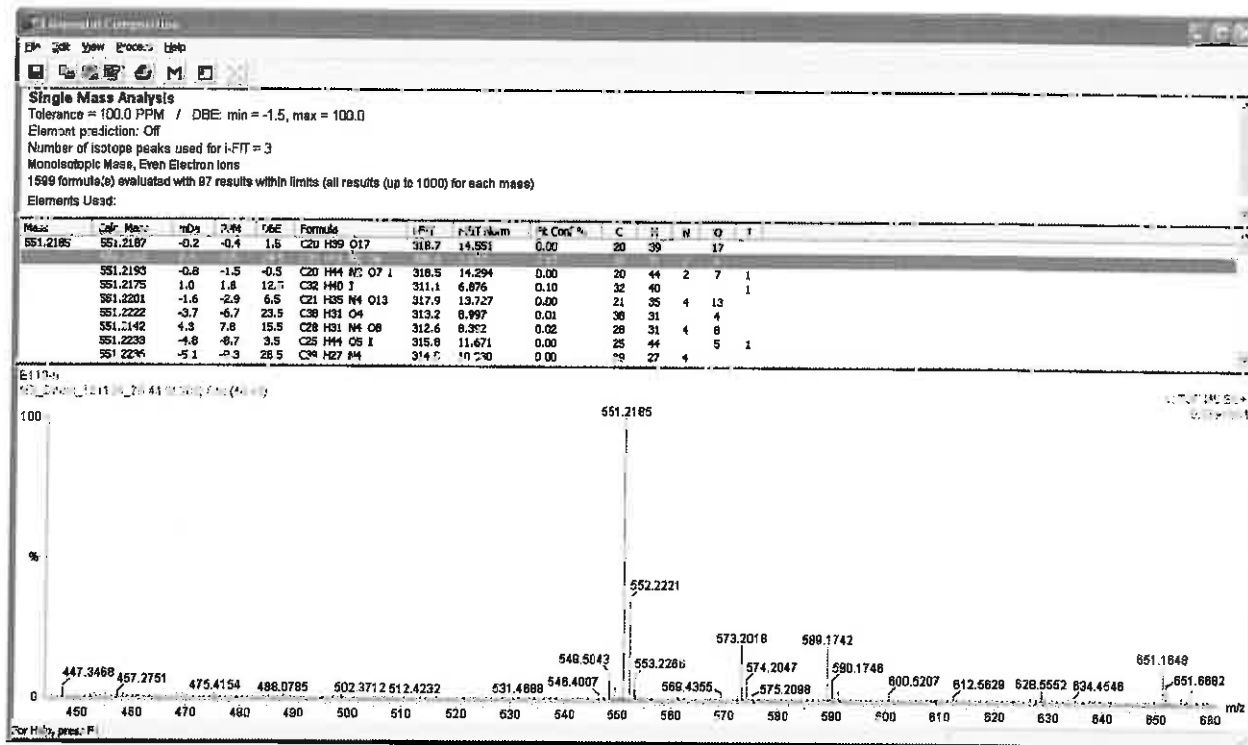


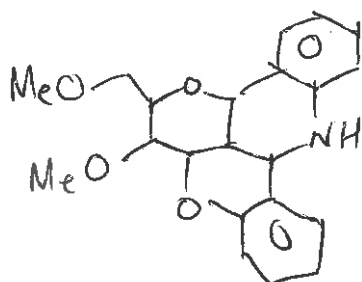
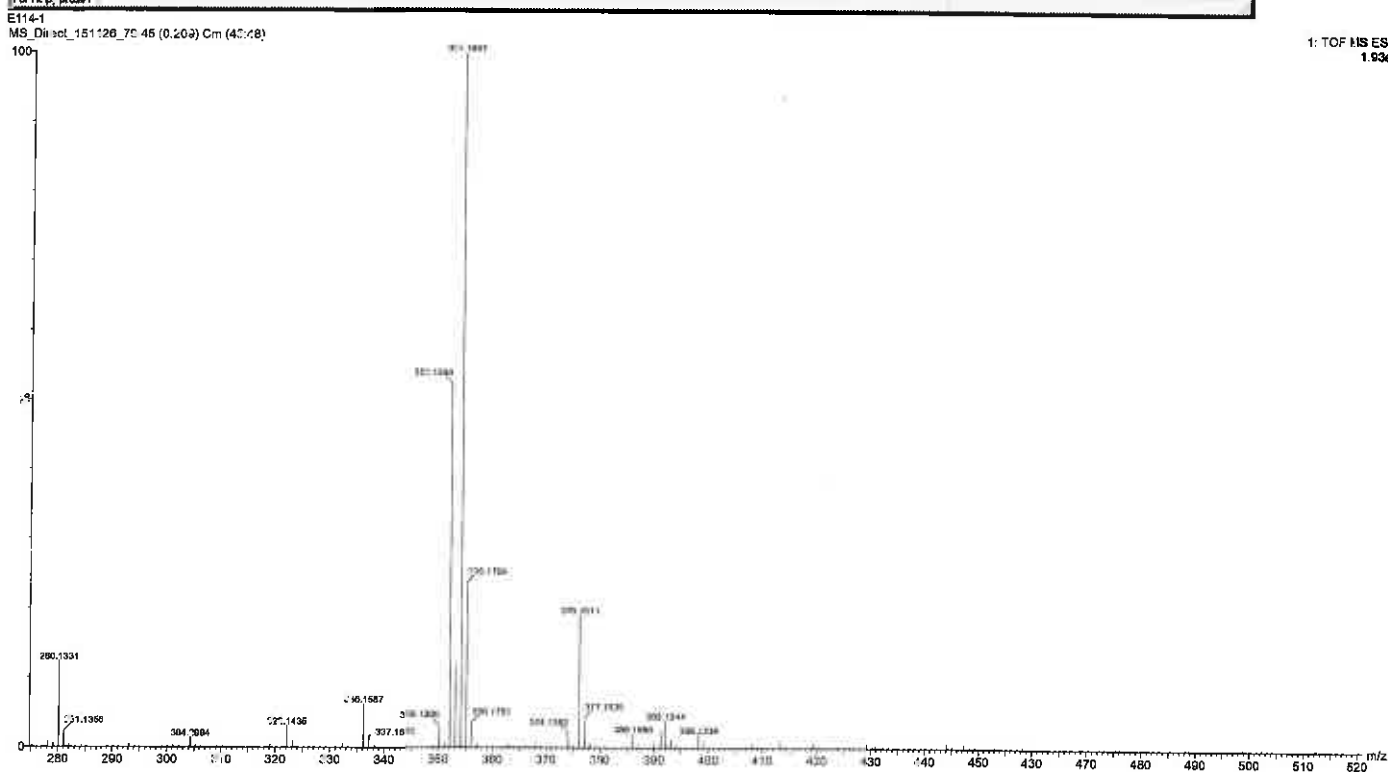
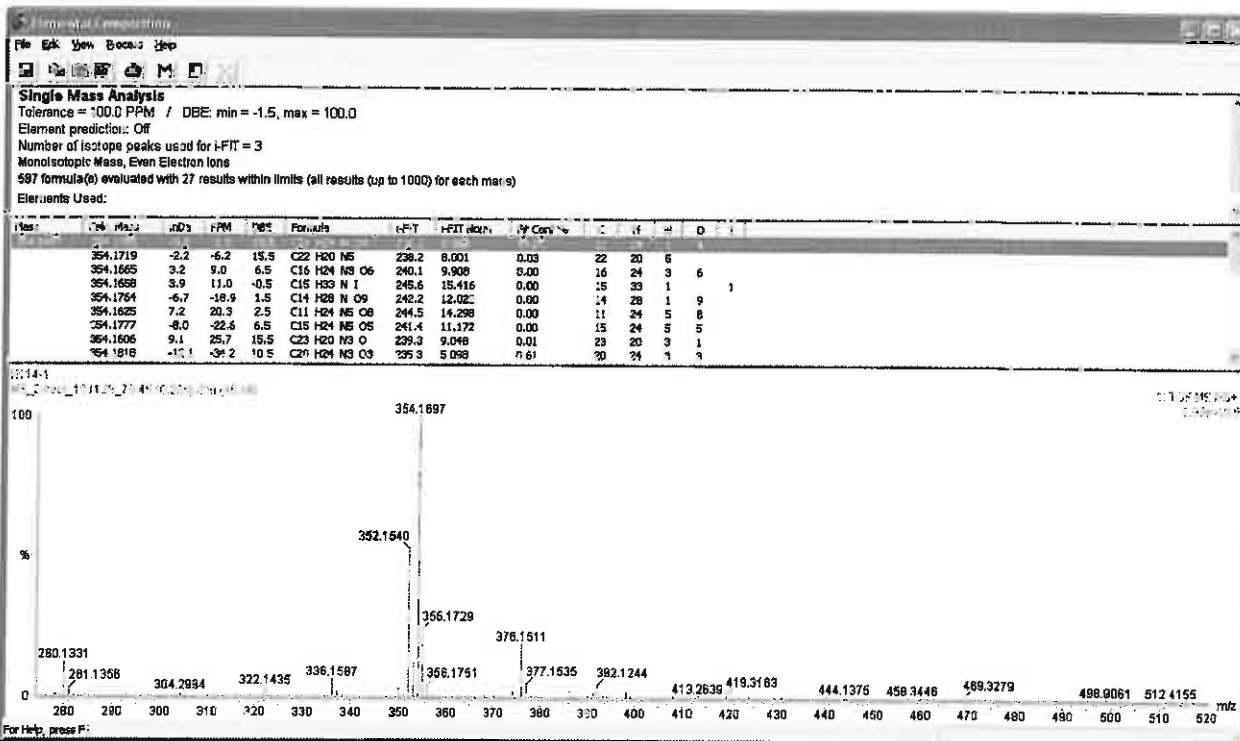
18 M



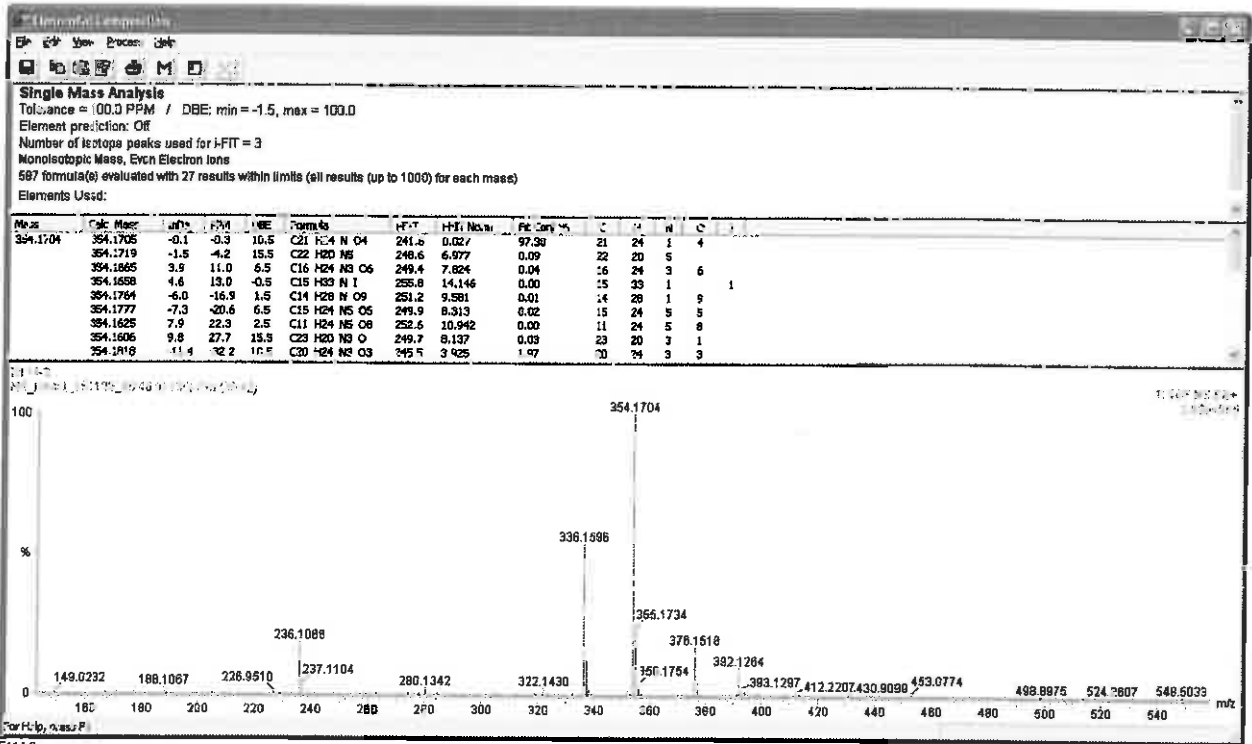


180

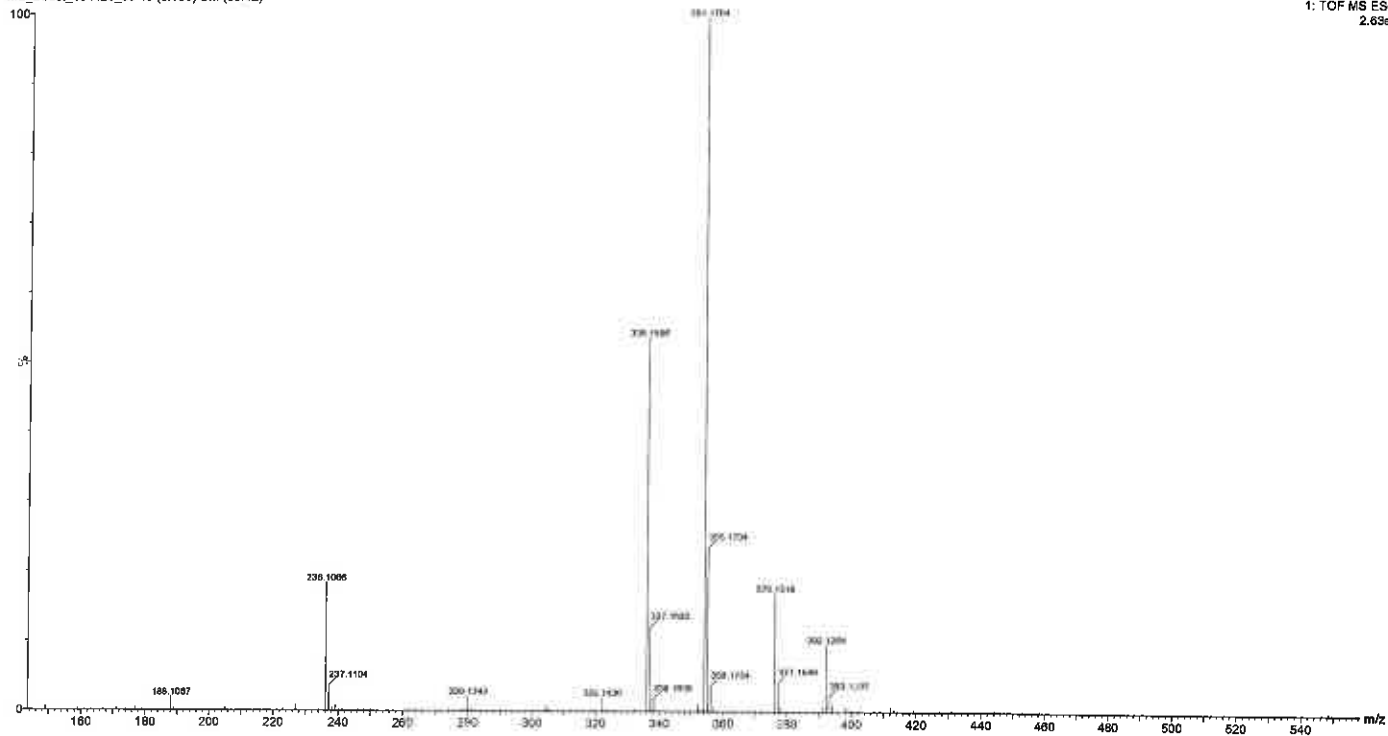




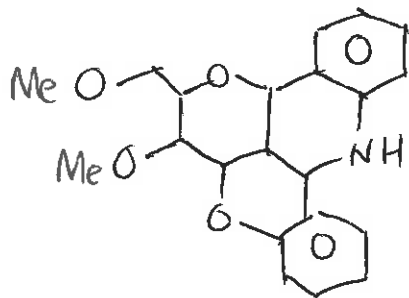
189



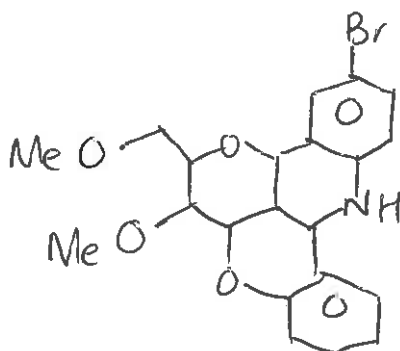
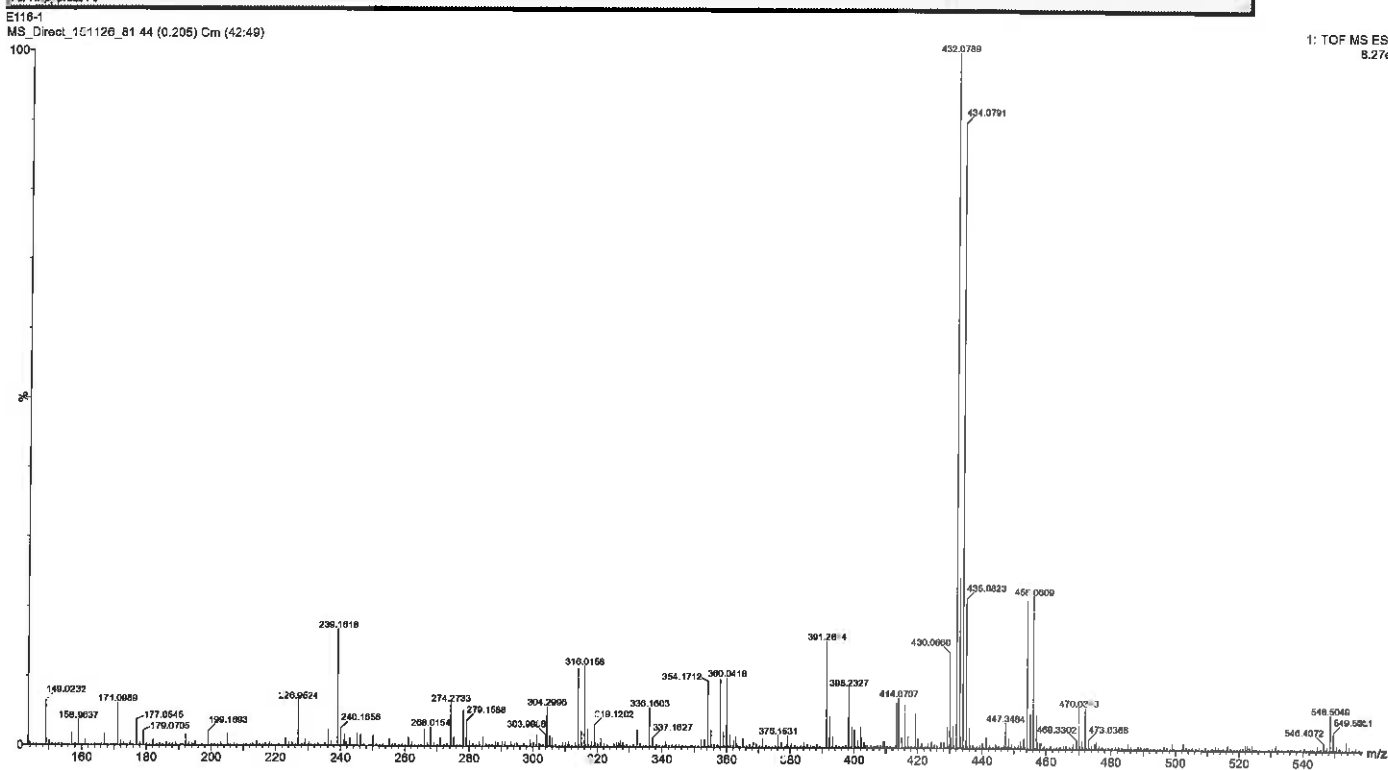
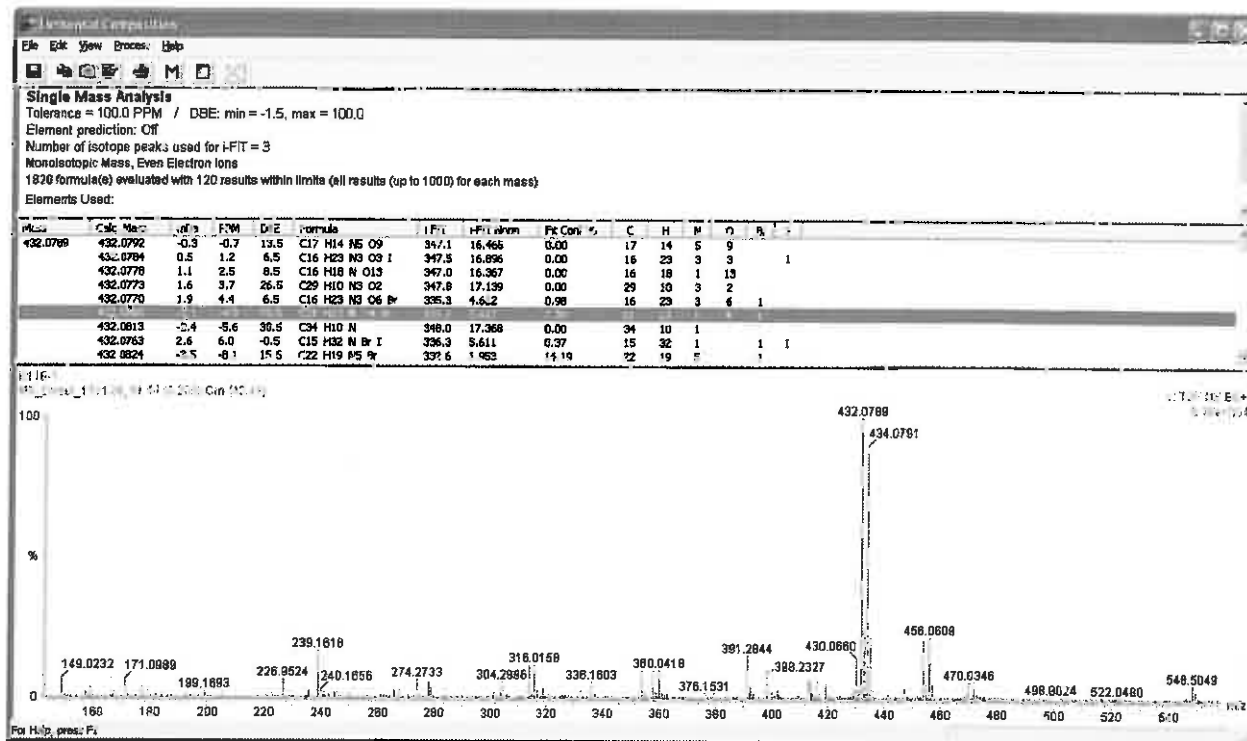
E114-2
MS_Direct_151126_90 40 (0.180) Cm (39.12)

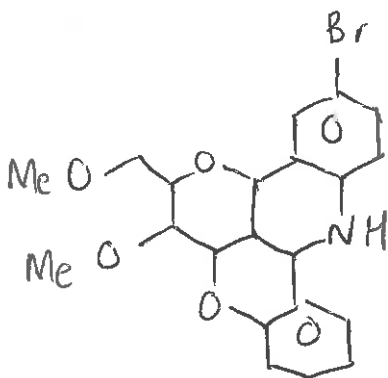
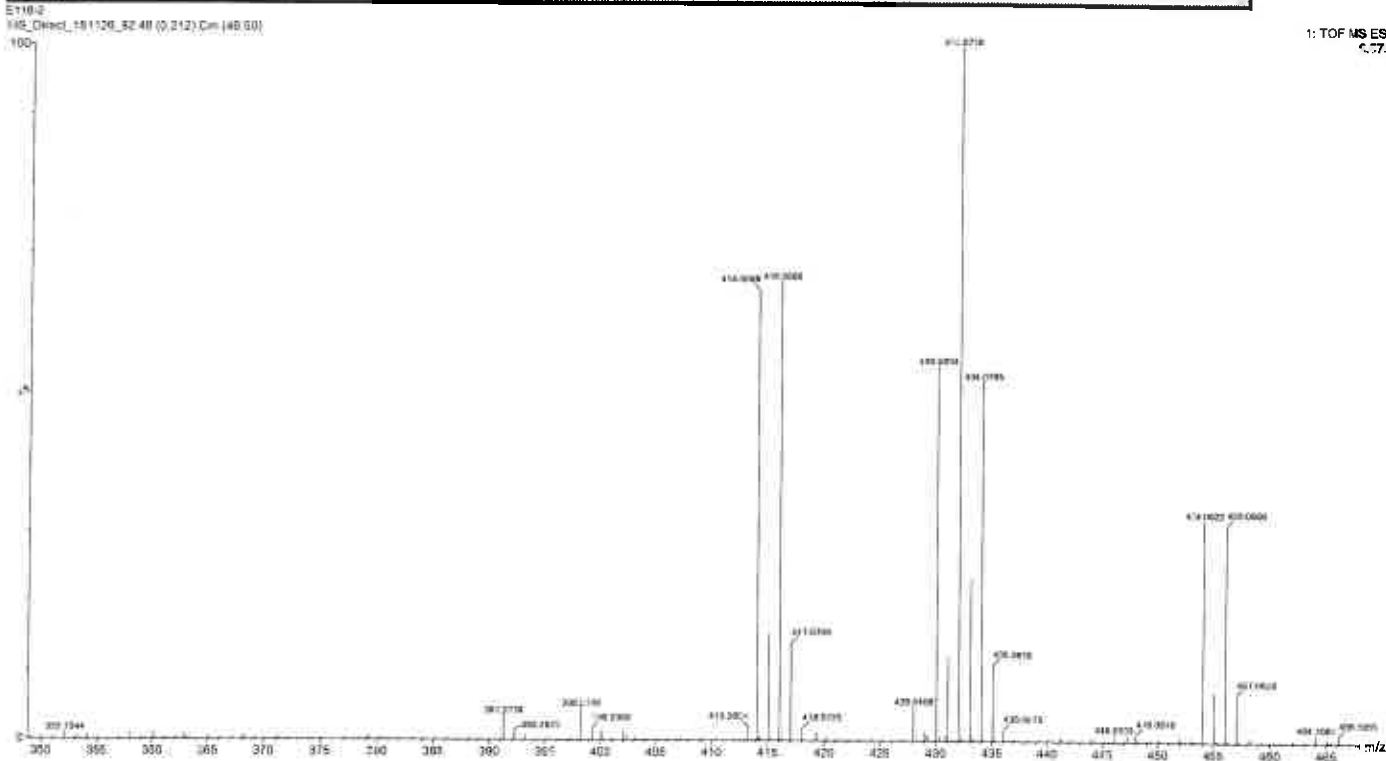
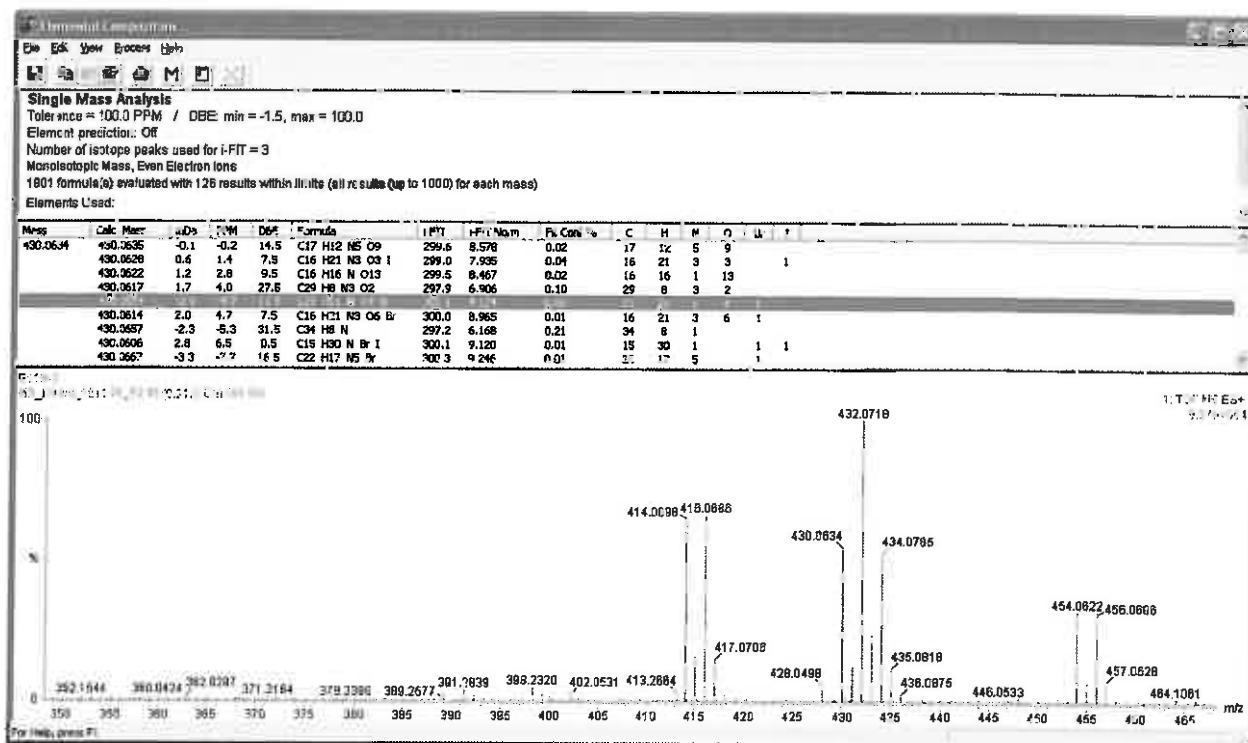


1: TOF MS ES+
2.63e5

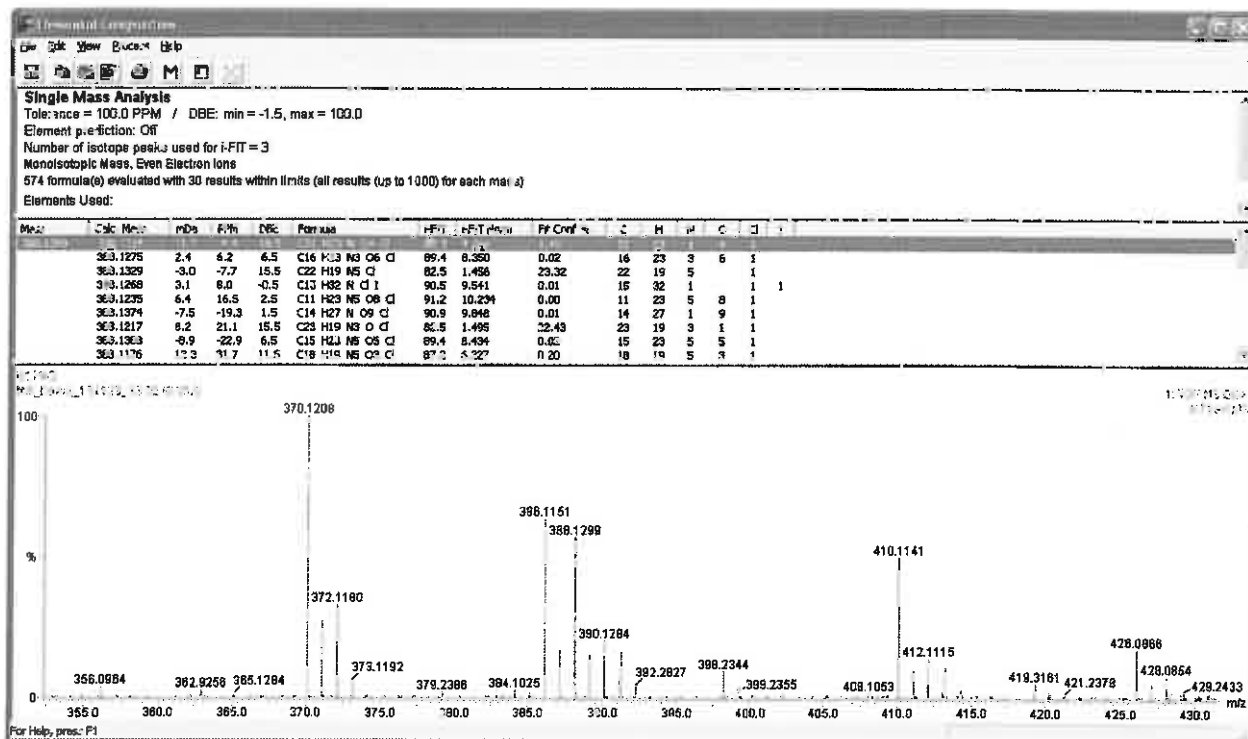


189

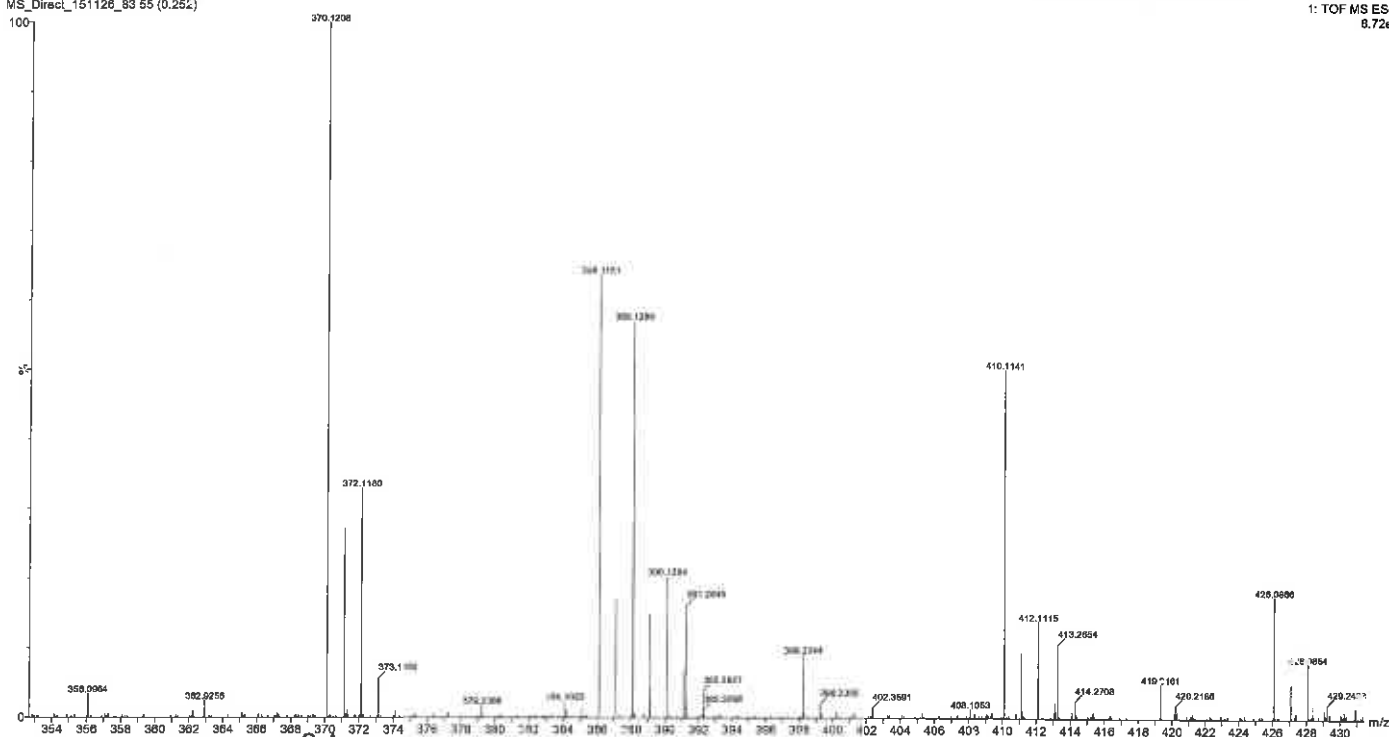




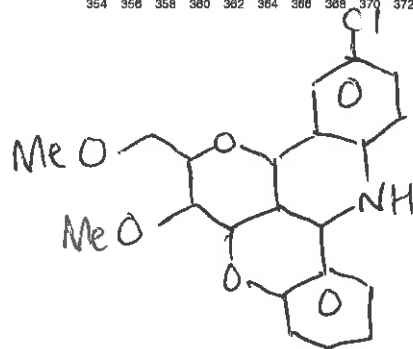
18 r



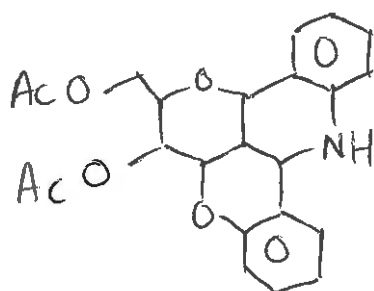
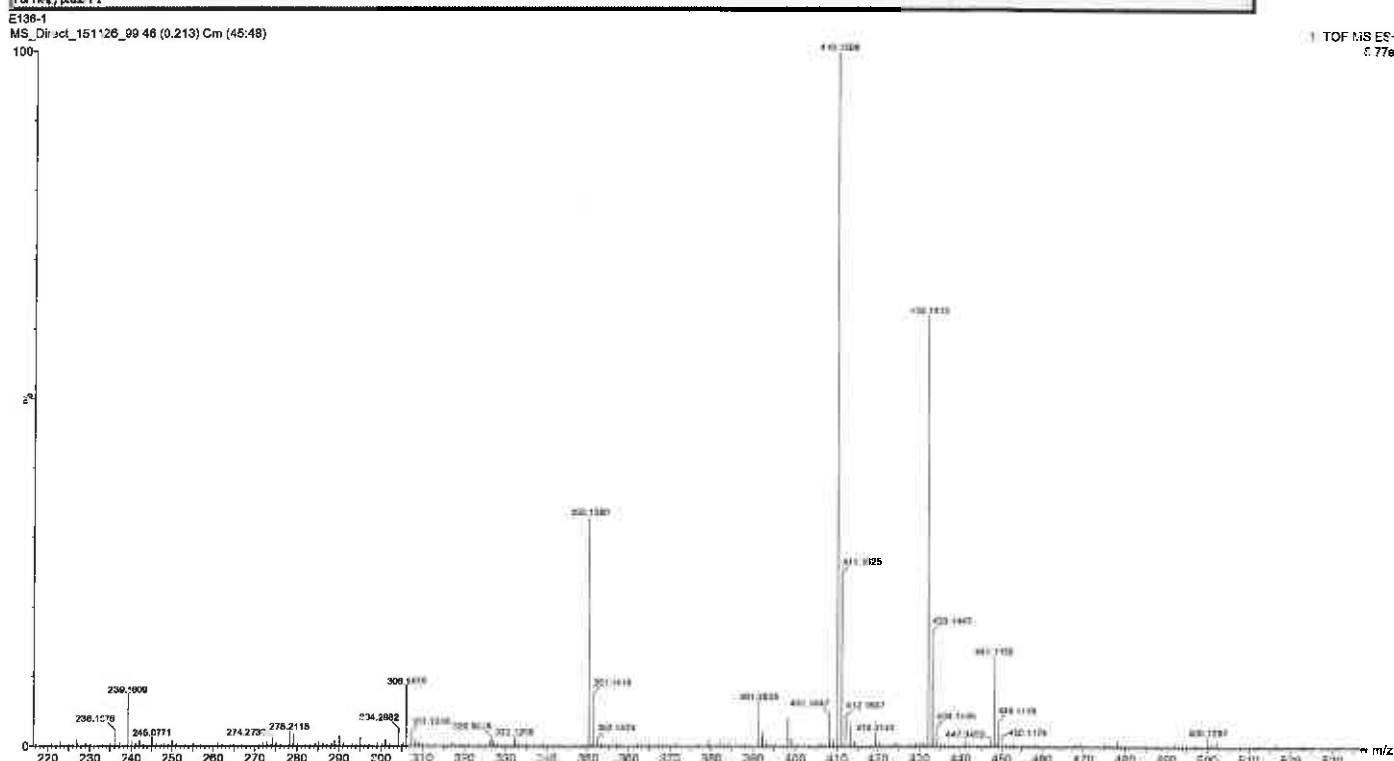
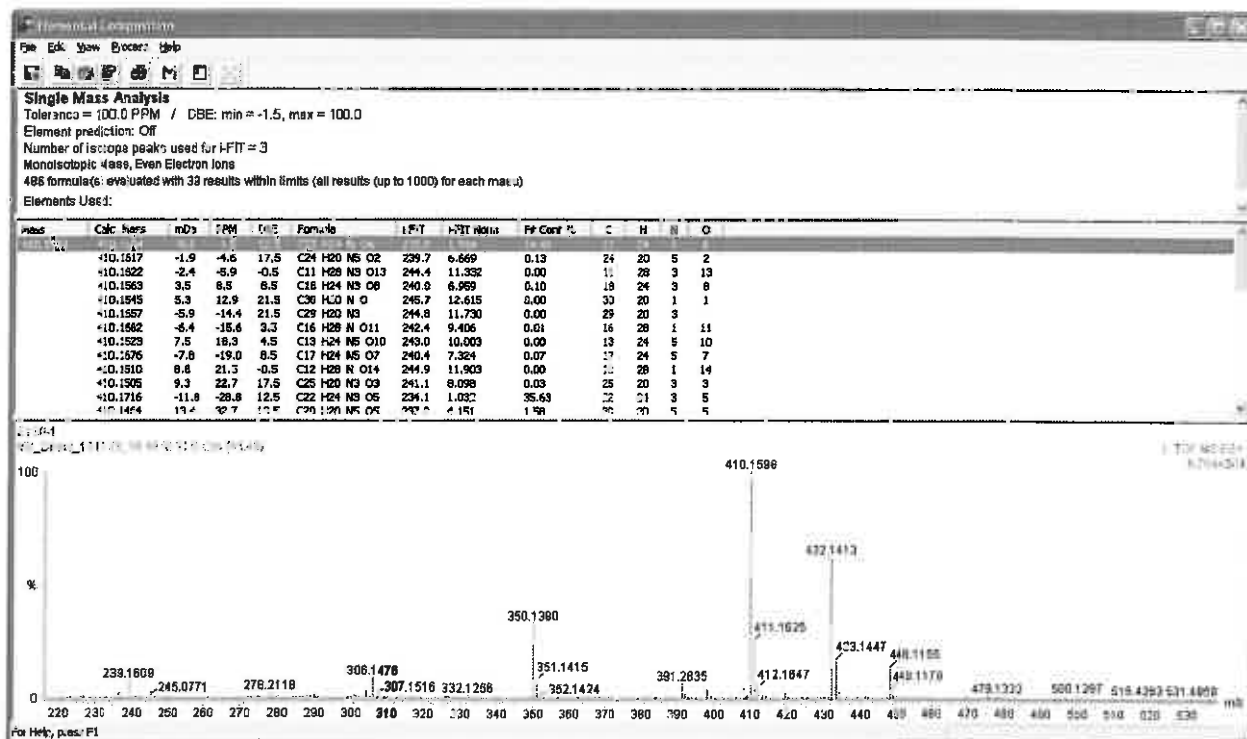
E119-2
MS_Direct_151126_83 55 (0.25%)



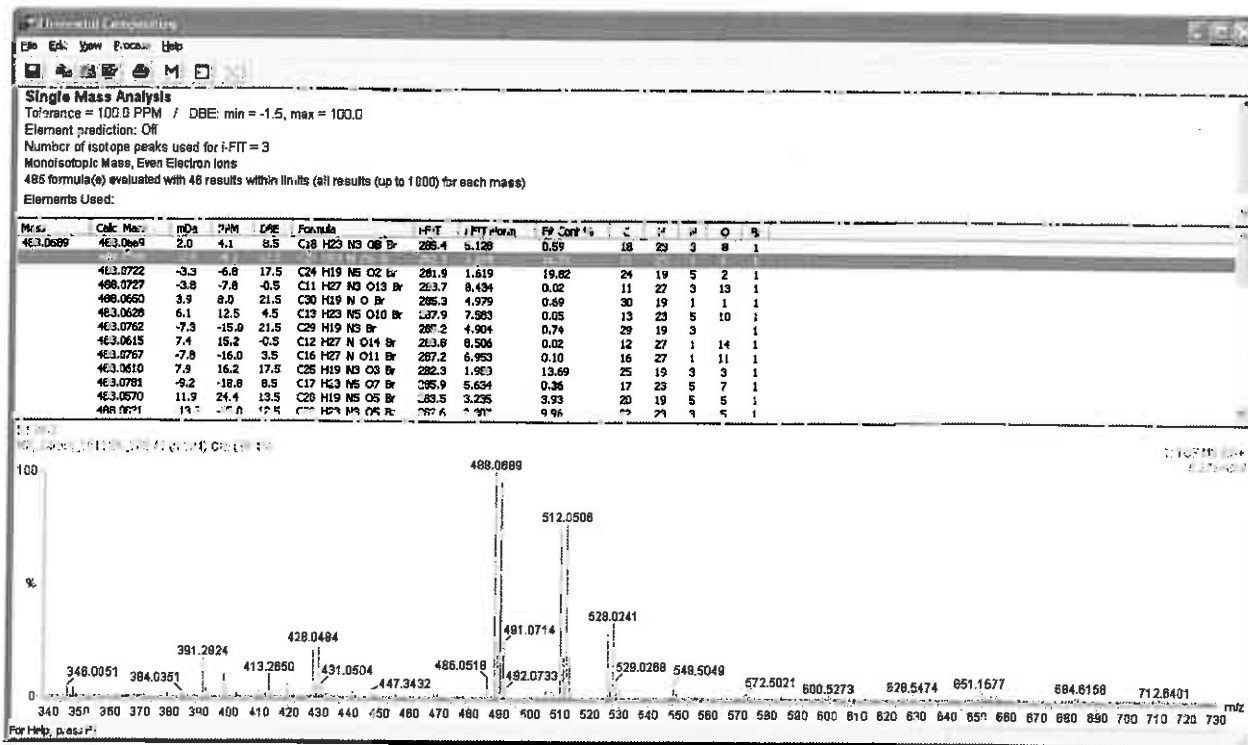
1: TOF MS ES+
8.72e3



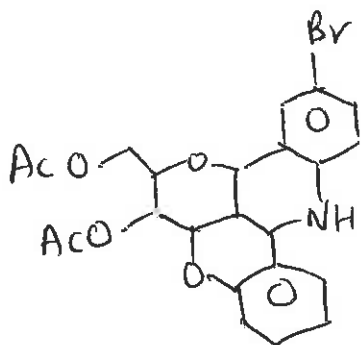
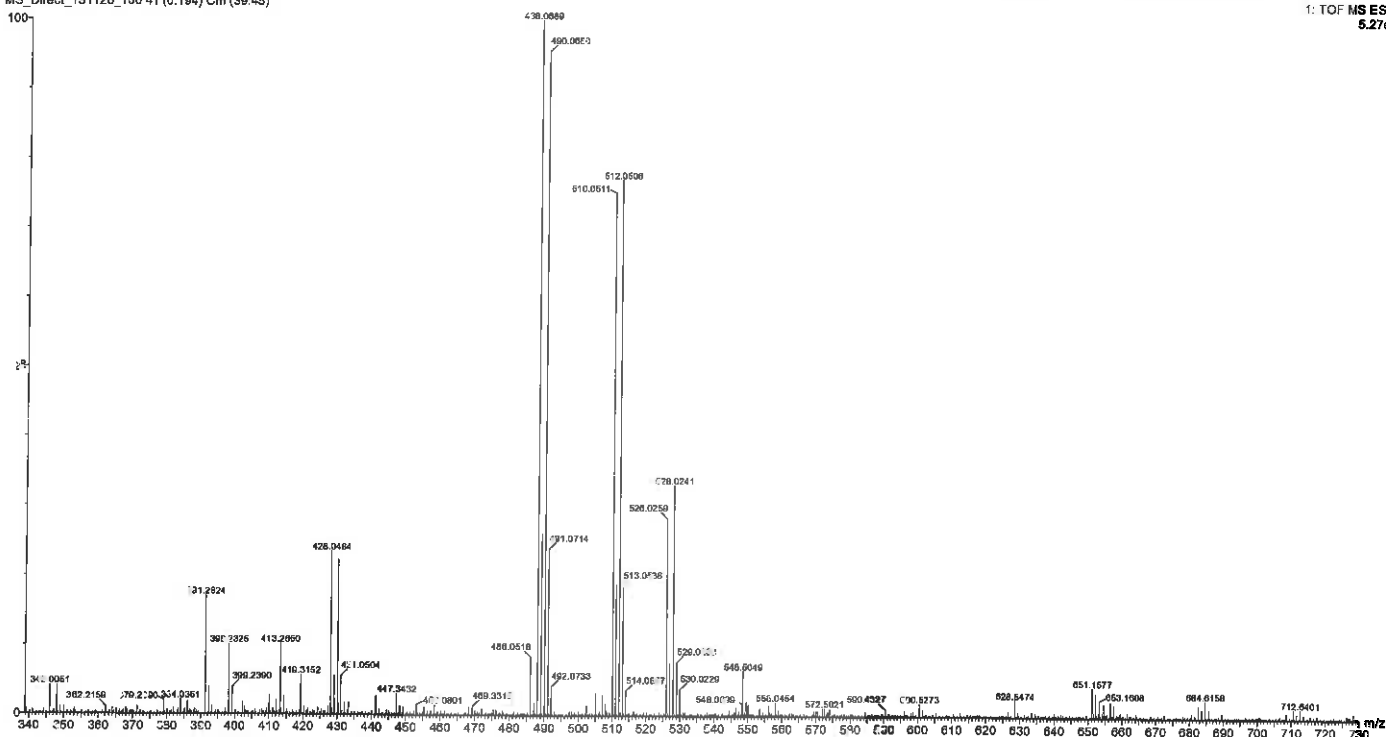
185

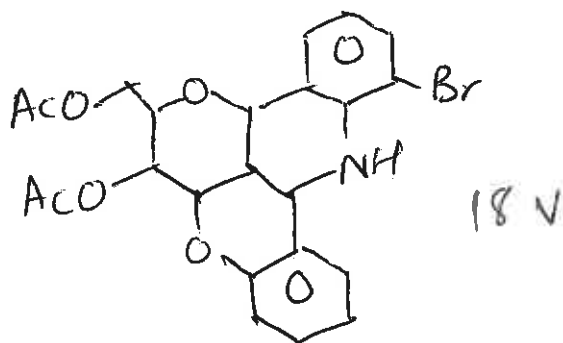
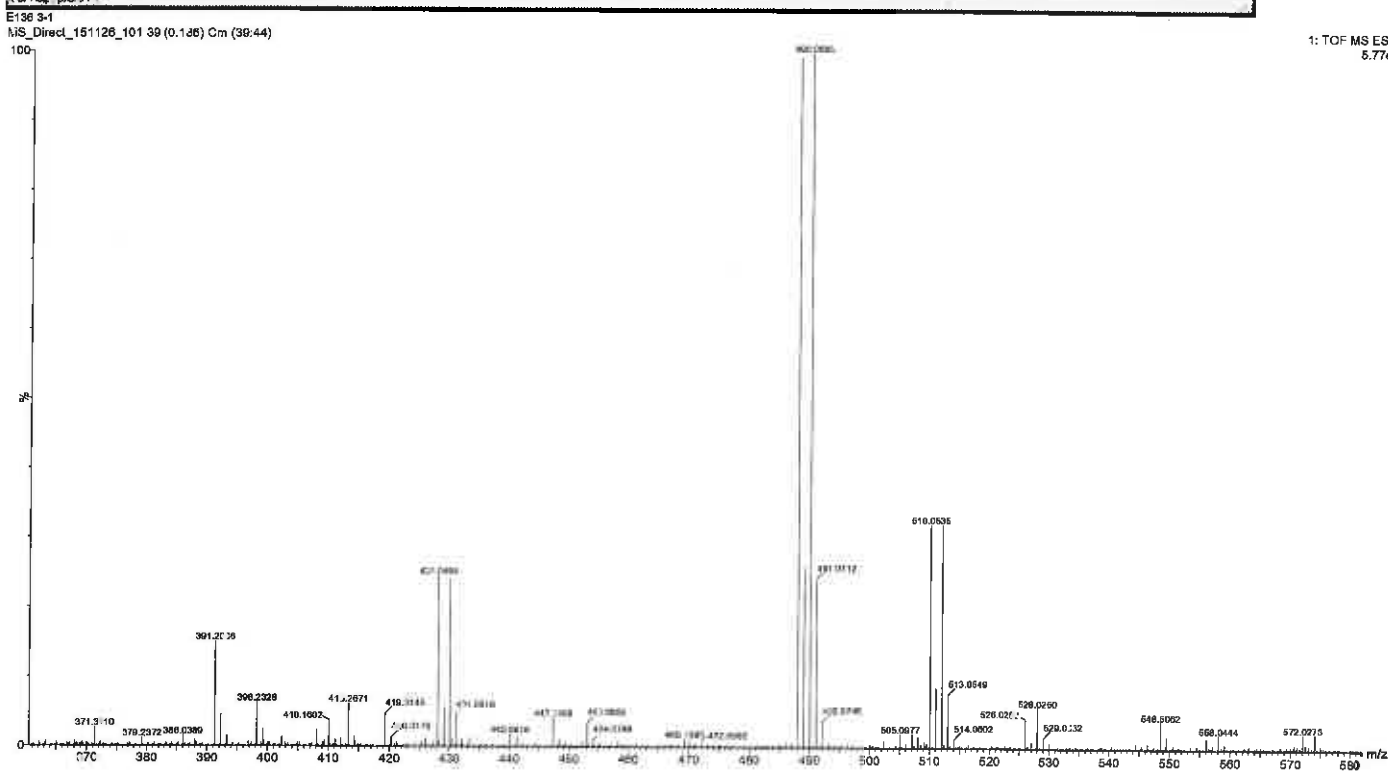
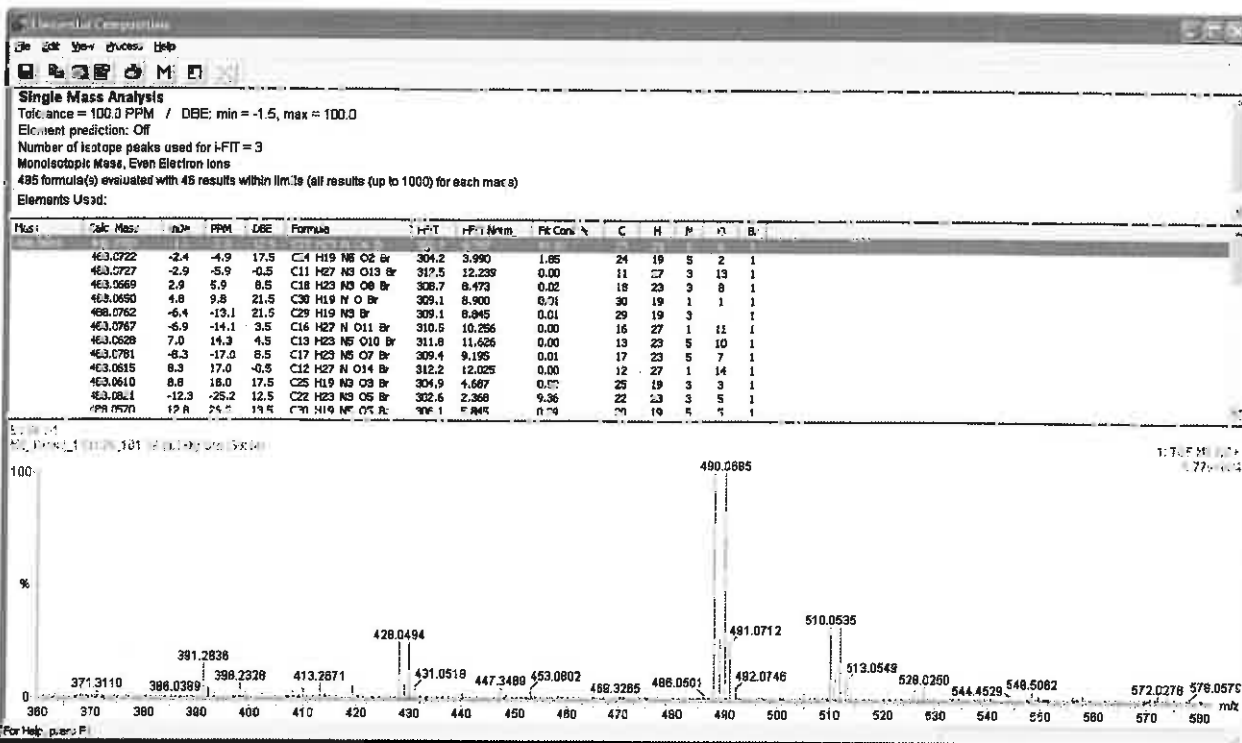


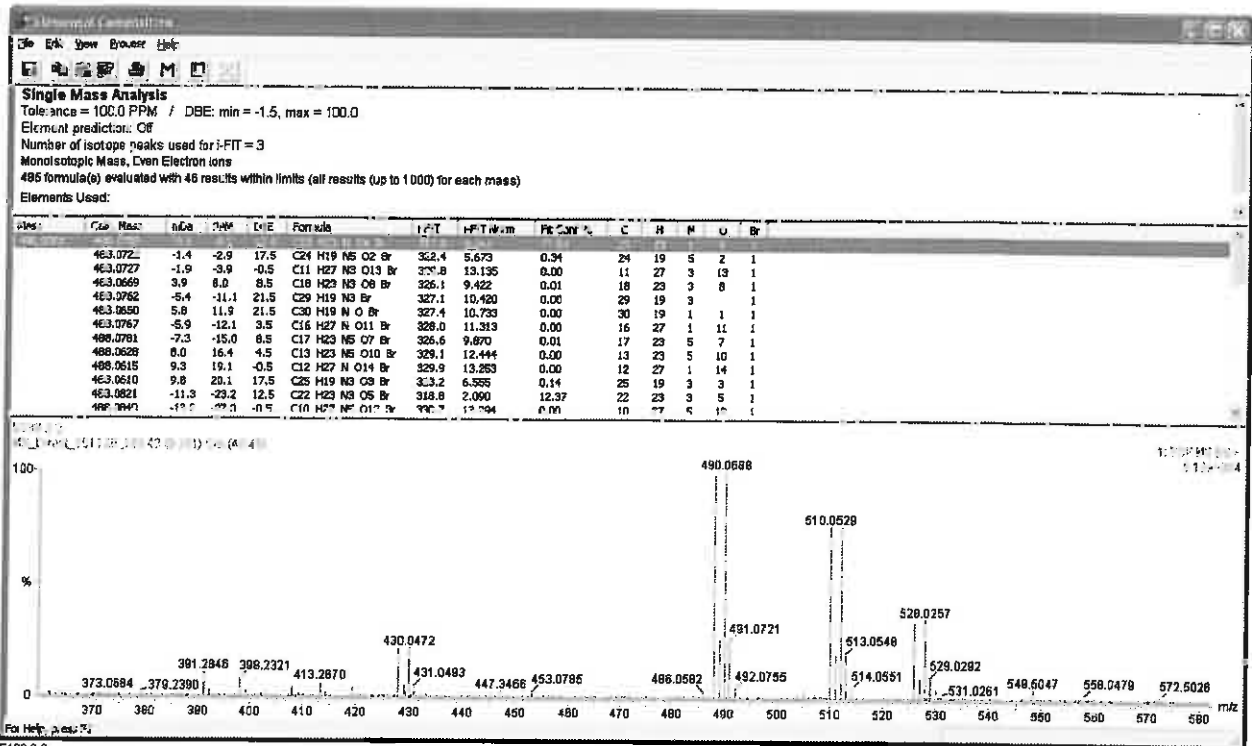
186



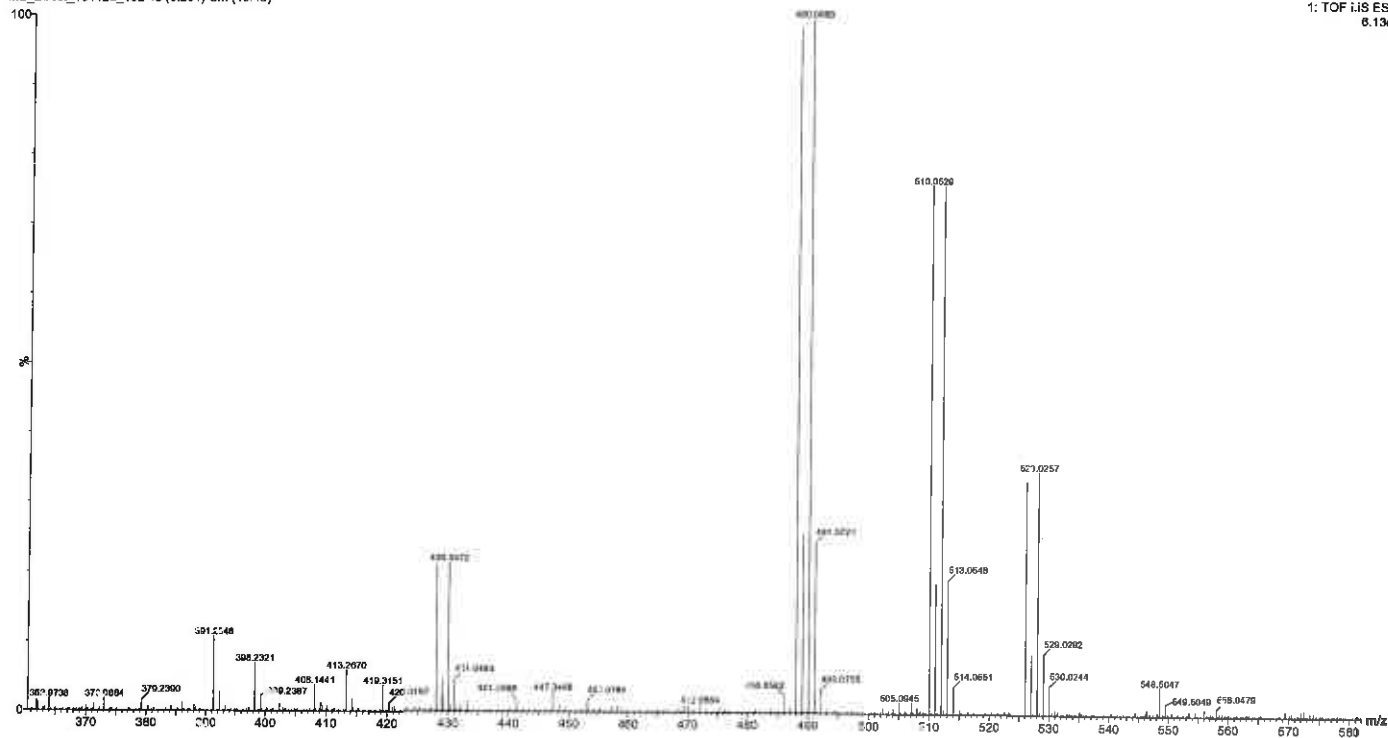
E136-2
MS_Direct_151128_100_41 (0.194) Cm (39.45)



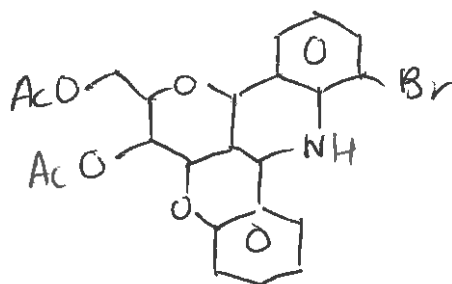




E136 3-2
MS_Direct_181126_102 43 (0.101) Om (40.45)



1: TOF LHS ES+
6.13e4



18v