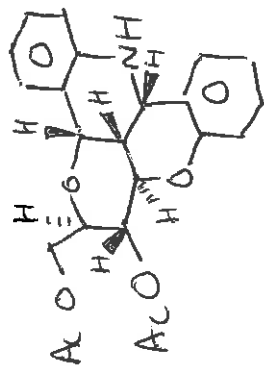
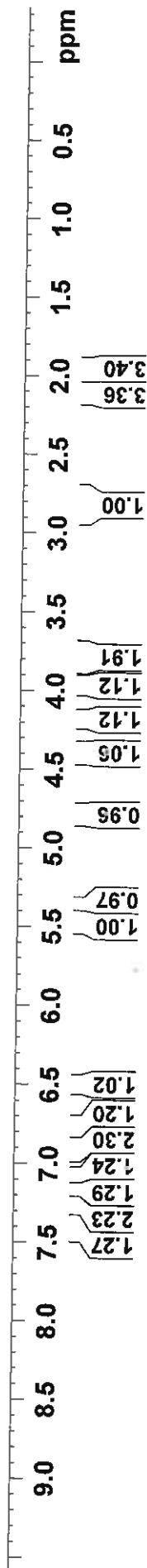
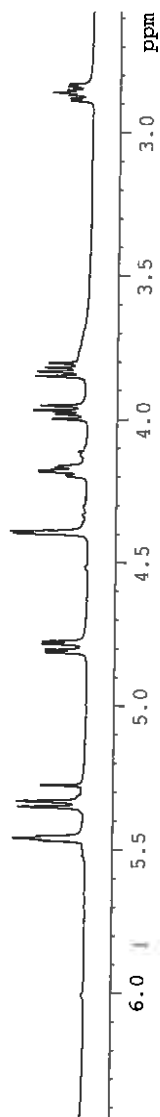


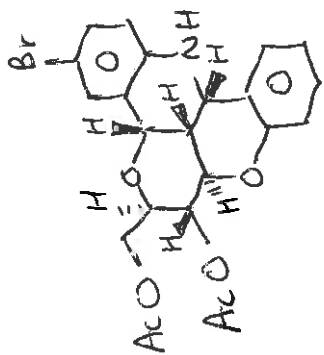
7.266  
 7.240  
 7.232  
 7.228  
 7.173  
 7.154  
 7.093  
 7.074  
 7.055  
 6.951  
 6.932  
 6.915  
 6.895  
 6.769  
 6.750  
 6.731  
 6.513  
 6.494  
 5.463  
 5.456  
 5.354  
 5.334  
 4.816  
 4.807  
 4.786  
 4.777  
 4.401  
 4.393  
 4.201  
 4.195  
 4.185  
 4.179  
 4.169  
 4.162  
 4.000  
 3.984  
 3.971  
 3.954  
 3.852  
 3.836  
 3.822  
 3.807  
 2.890  
 2.883  
 2.871  
 2.862  
 2.853  
 2.841  
 2.833  
 2.114  
 1.985



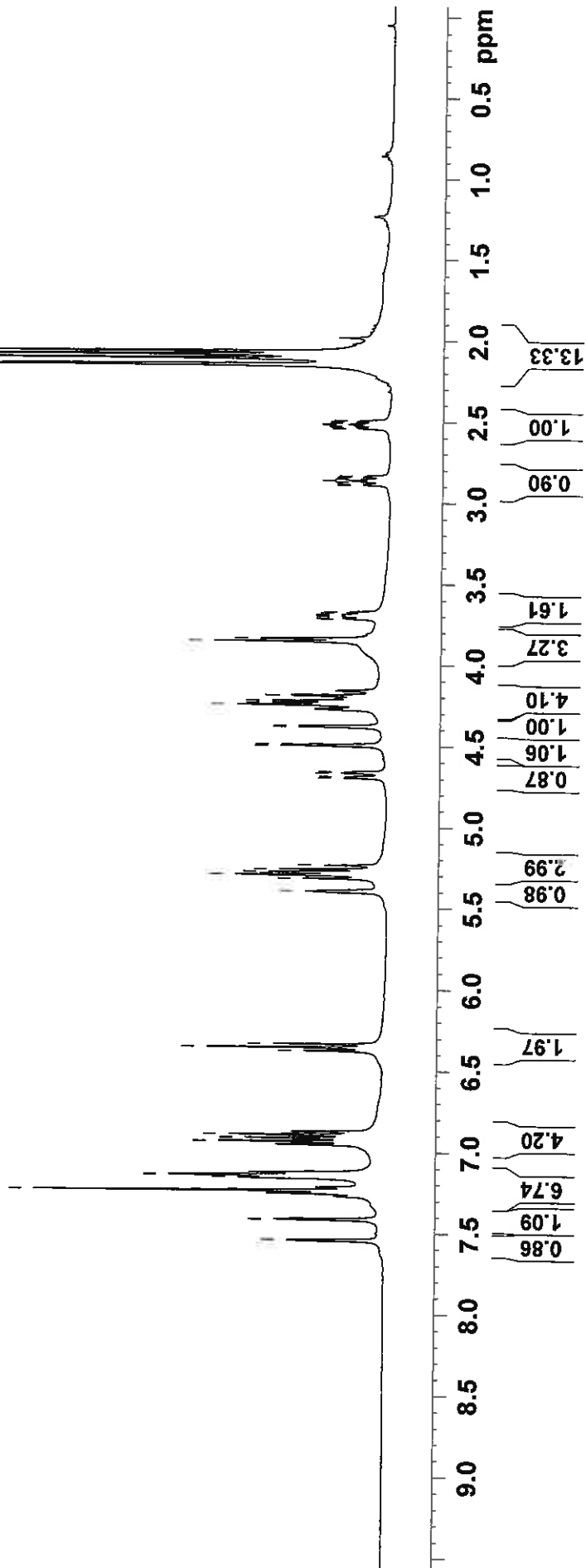
18a 250 confomer



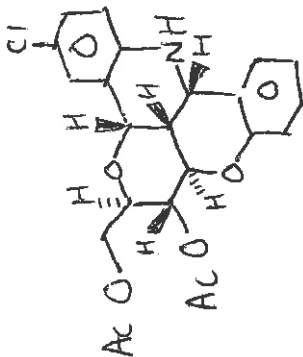
7.547  
 7.543  
 7.416  
 7.414  
 7.240  
 7.160  
 7.144  
 6.935  
 6.914  
 6.894  
 6.377  
 6.357  
 6.336  
 5.396  
 5.317  
 5.296  
 5.284  
 5.277  
 5.260  
 5.236  
 4.698  
 4.689  
 4.668  
 4.660  
 4.500  
 4.492  
 4.384  
 4.377  
 4.249  
 4.235  
 4.223  
 4.192  
 4.187  
 3.856  
 3.840  
 3.717  
 3.712  
 3.703  
 3.697  
 3.692  
 3.687  
 3.677  
 3.673  
 2.863  
 2.545  
 2.537  
 2.528  
 2.520  
 2.518  
 2.509  
 2.501  
 2.154  
 2.113  
 2.090  
 2.070



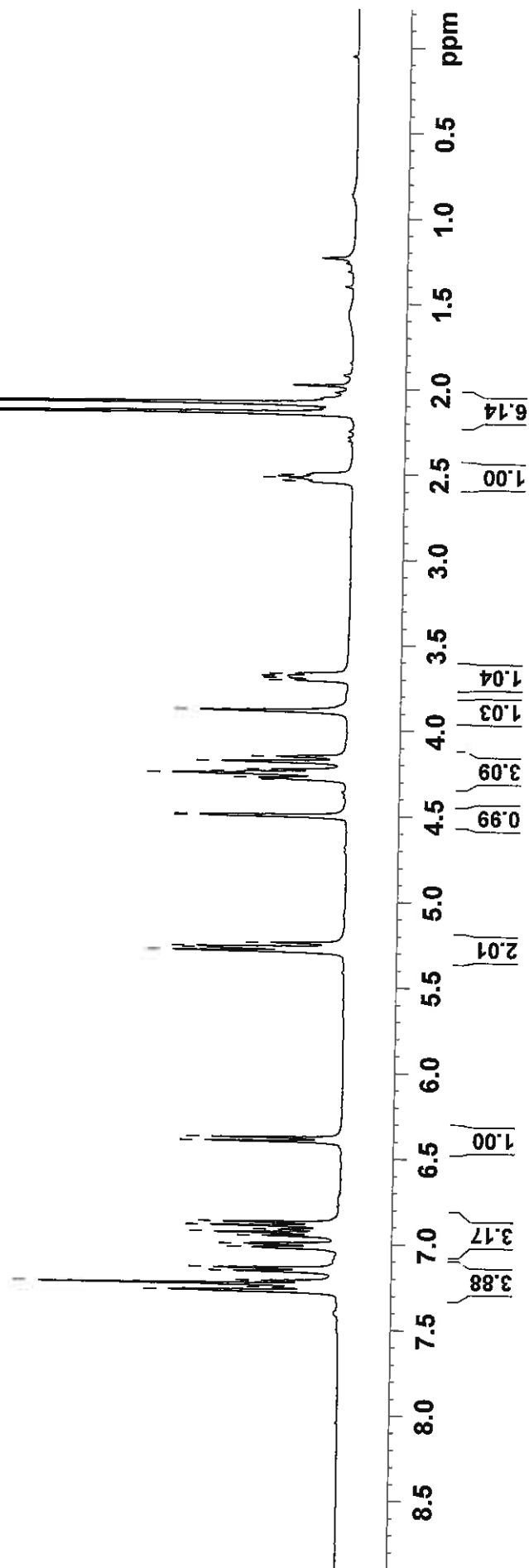
18b <sup>4</sup>C, and <sup>2</sup>S<sub>0</sub> mixture

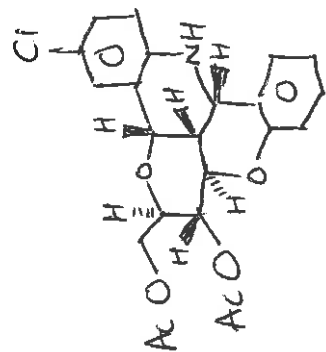


7.278  
 7.258  
 7.240  
 7.220  
 7.163  
 7.145  
 7.025  
 7.023  
 7.004  
 6.957  
 6.939  
 6.920  
 6.898  
 6.878  
 6.405  
 6.384  
 5.294  
 5.279  
 5.270  
 5.245  
 4.505  
 4.499  
 4.290  
 4.282  
 4.259  
 4.247  
 4.231  
 4.187  
 4.157  
 3.889  
 3.708  
 3.695  
 3.684  
 3.671  
 2.542  
 2.524  
 2.516  
 2.506  
 2.146  
 2.089

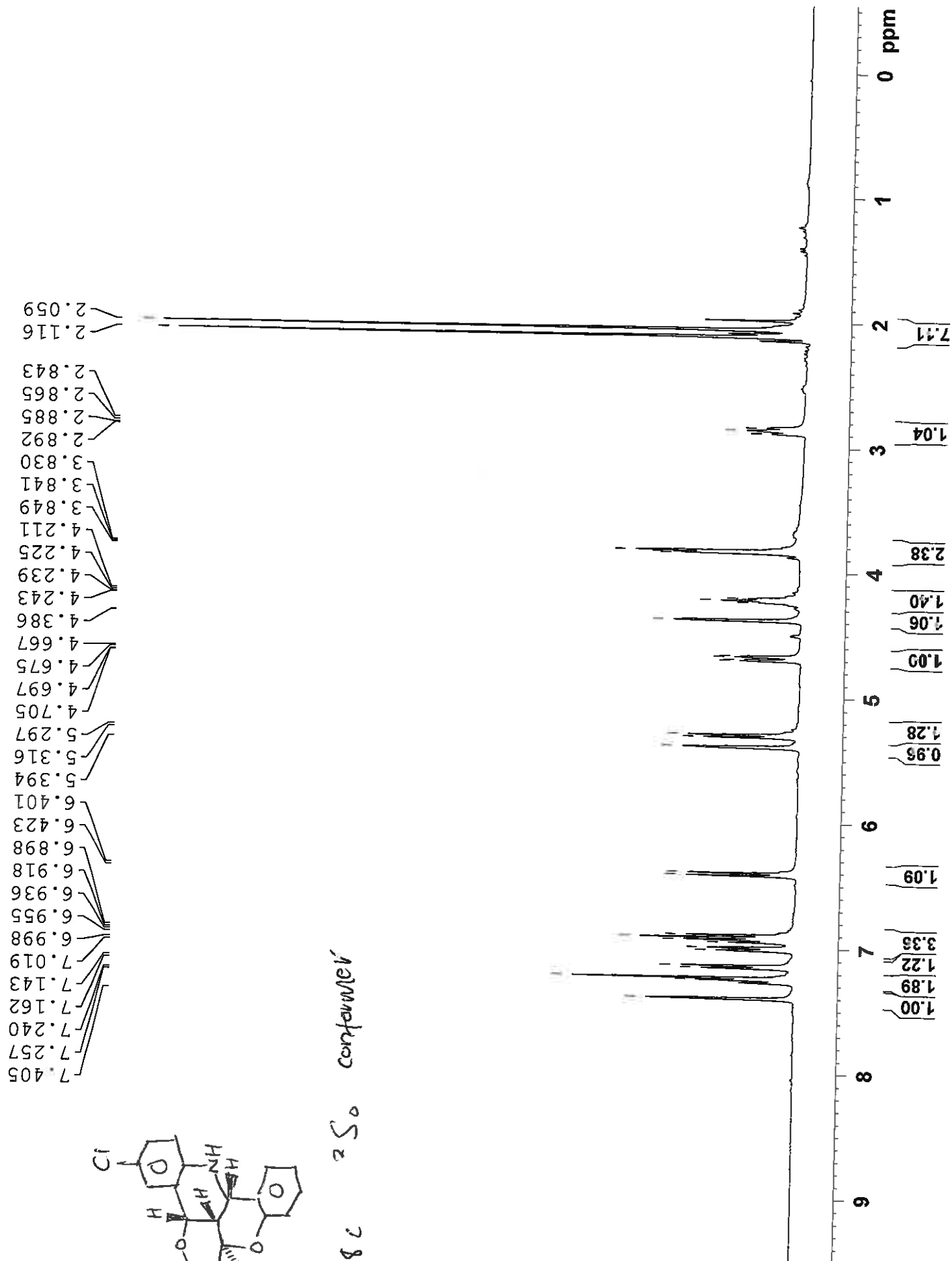


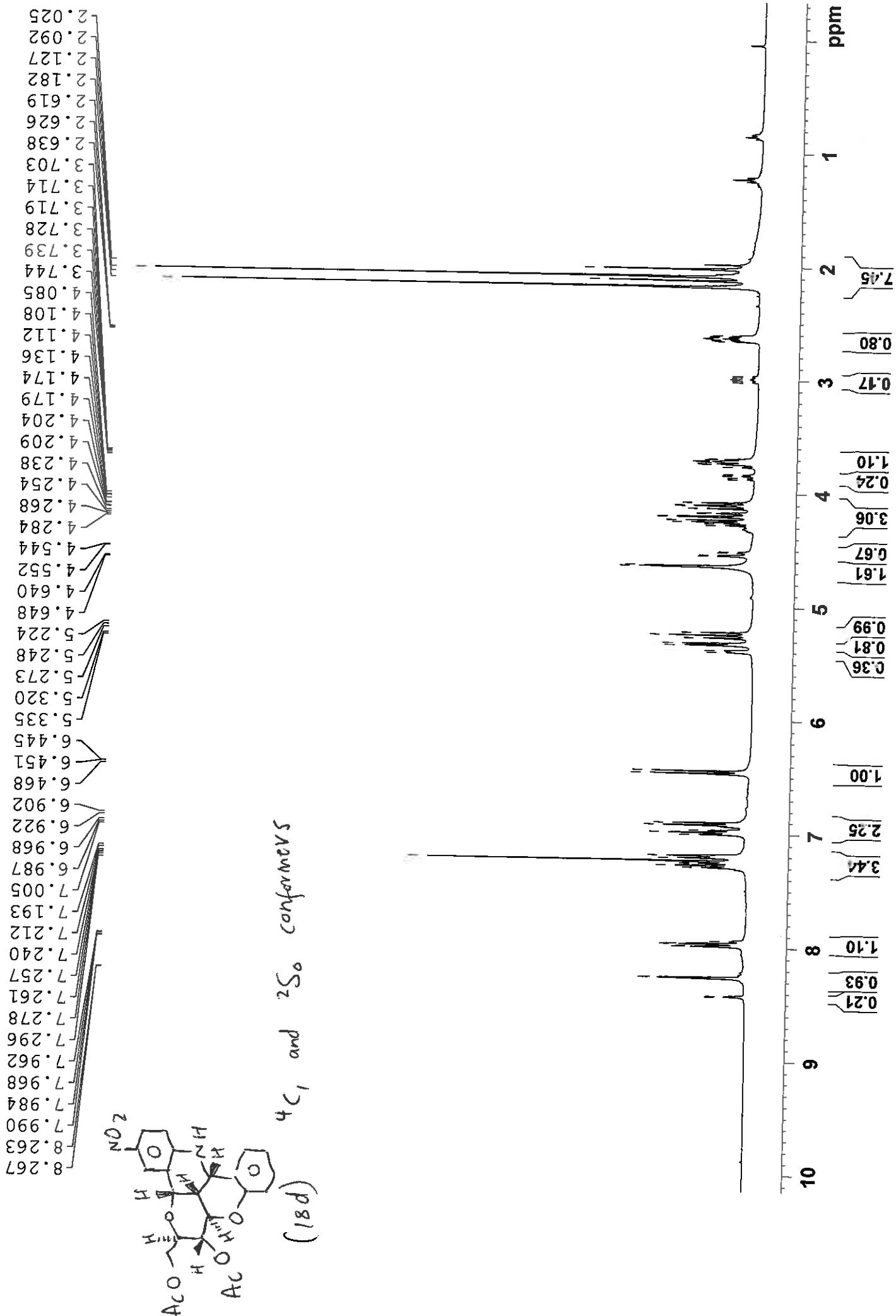
18c 4c, confinner

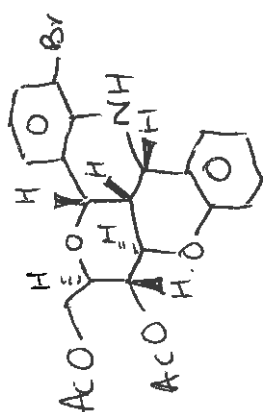




18c 250 container

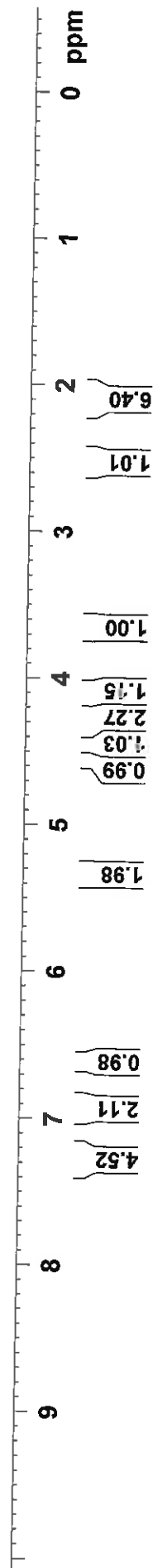




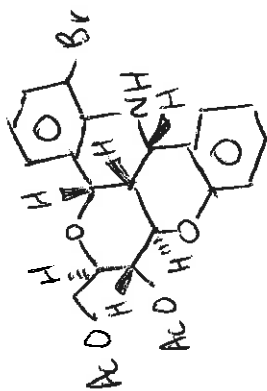


18e, 4 C, conformer

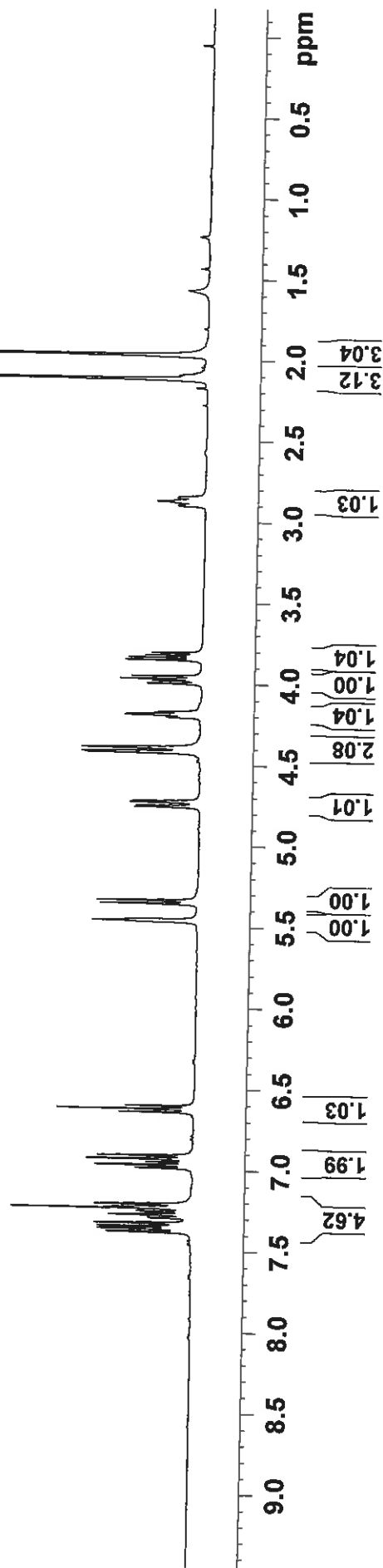
7.353  
7.333  
7.297  
7.278  
7.258  
7.239  
7.214  
6.986  
6.968  
6.949  
6.912  
6.892  
6.637  
6.617  
6.598  
5.364  
5.347  
5.319  
5.295  
4.559  
4.555  
4.452  
4.339  
4.327  
4.308  
4.295  
4.265  
4.240  
4.125  
4.095  
3.683  
3.676  
3.659  
2.545  
2.527  
2.122  
2.080



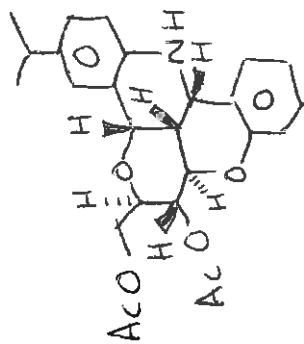
7.384  
 7.365  
 7.350  
 7.330  
 7.299  
 7.296  
 7.278  
 7.261  
 7.257  
 7.240  
 7.232  
 7.229  
 7.213  
 6.989  
 6.970  
 6.953  
 6.952  
 6.934  
 6.913  
 6.644  
 6.625  
 6.606  
 5.470  
 5.463  
 5.457  
 5.359  
 5.340  
 4.761  
 4.752  
 4.732  
 4.723  
 4.426  
 4.418  
 4.395  
 4.209  
 4.203  
 4.193  
 4.187  
 4.177  
 4.172  
 3.999  
 3.983  
 3.970  
 3.953  
 3.854  
 3.839  
 3.825  
 3.809  
 2.897  
 2.875  
 2.868  
 2.852  
 2.848  
 2.118  
 1.970



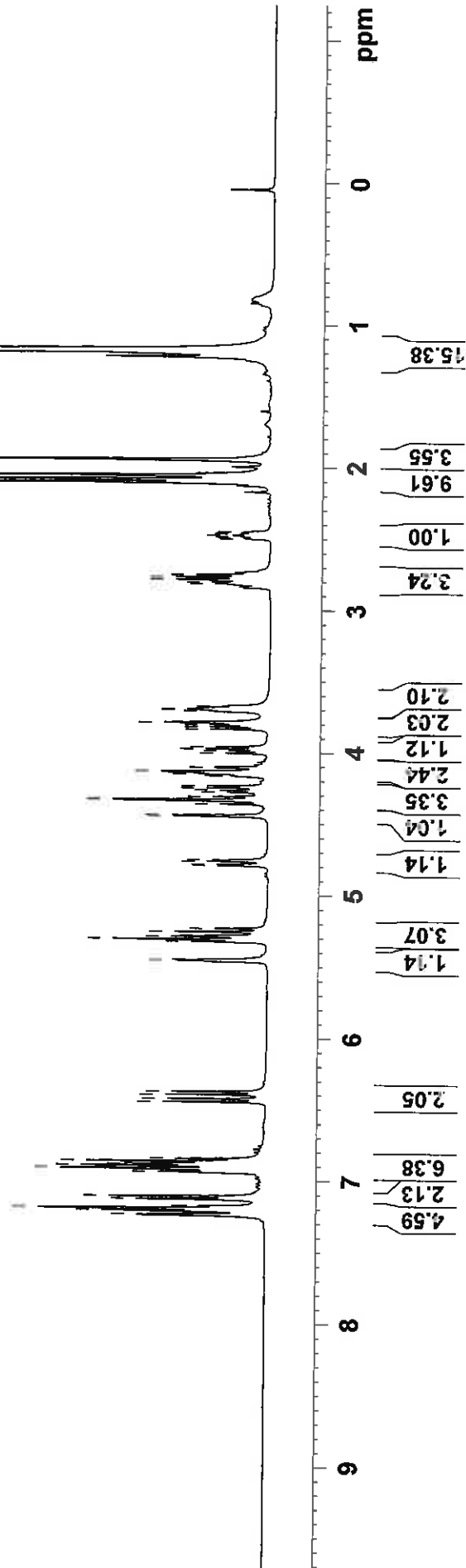
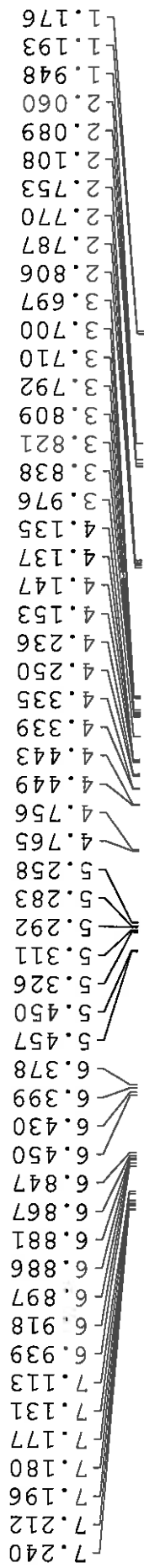
18c <sup>250</sup> confomer

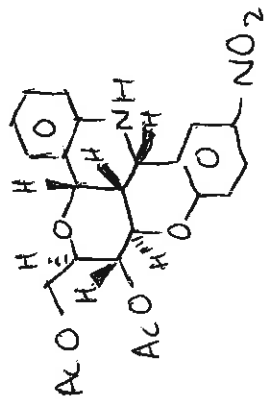






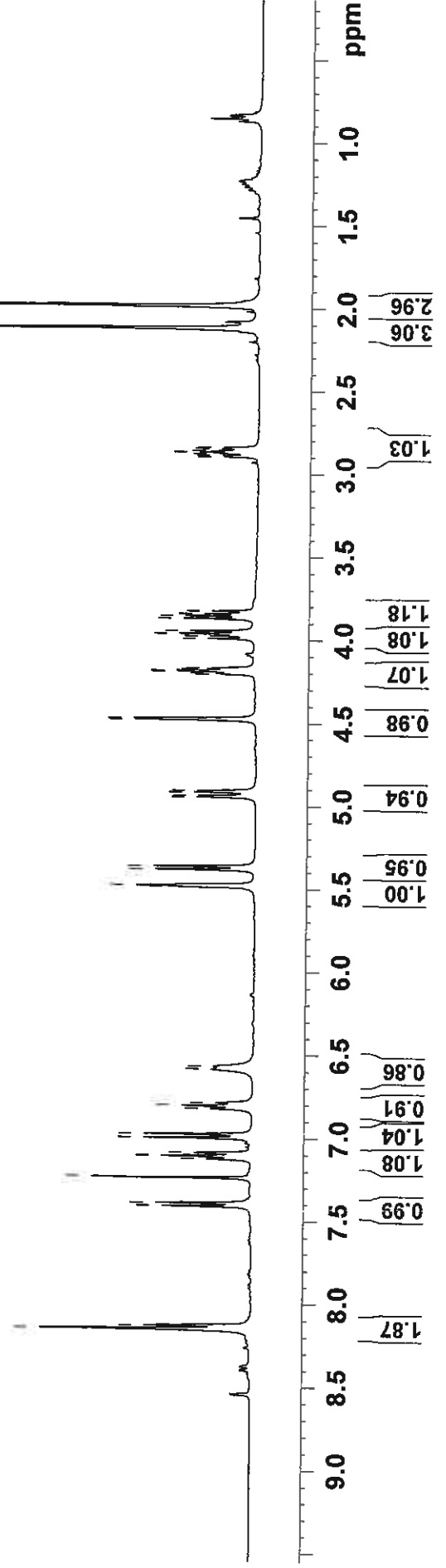
18f 4C, and 2S<sub>o</sub> conformers



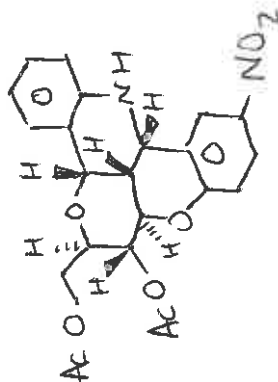


18h  $^2S_0$  conformer

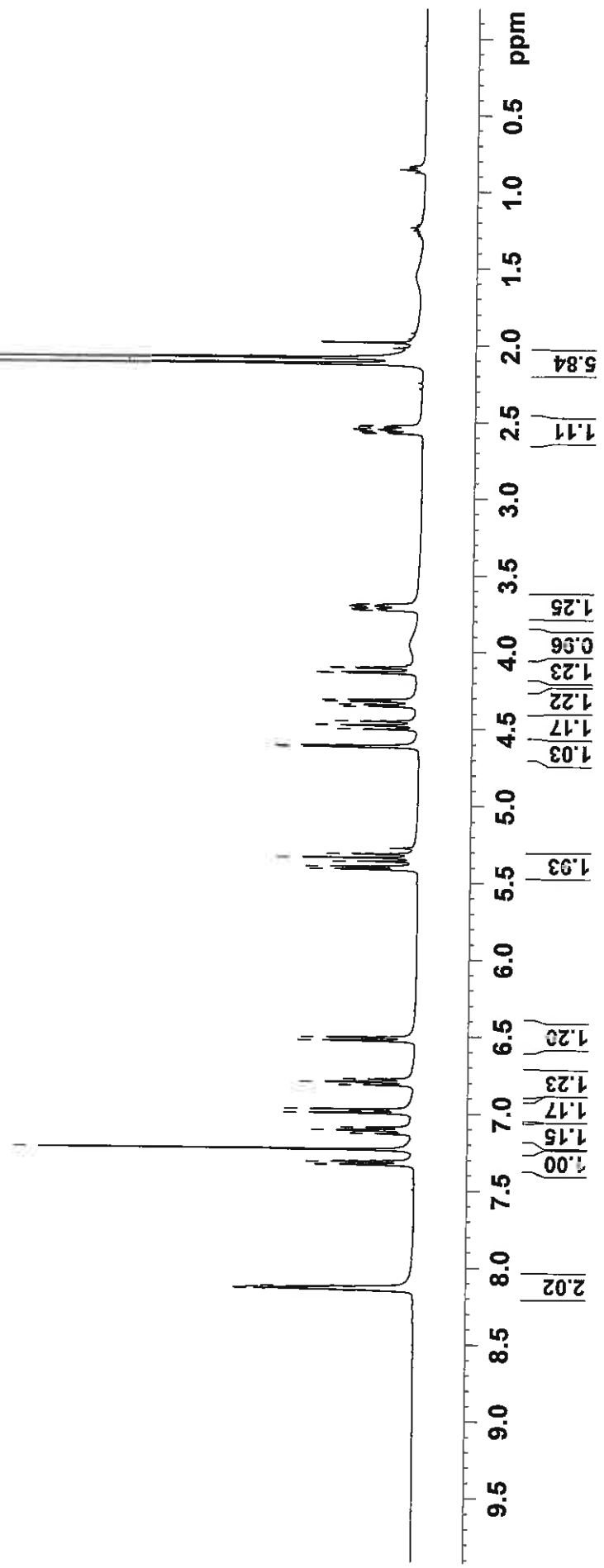
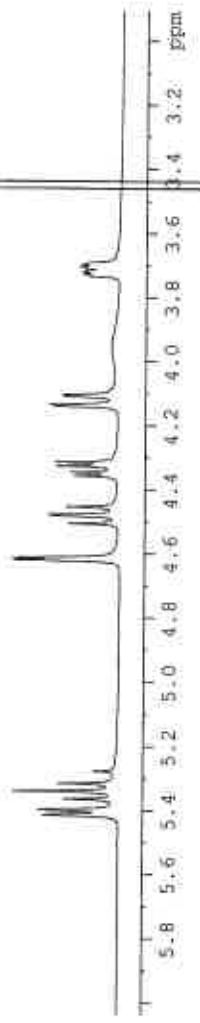
8.152  
8.132  
8.126  
7.410  
7.391  
7.238  
7.125  
7.107  
7.089  
6.999  
6.976  
6.823  
6.805  
6.787  
6.585  
6.568  
5.489  
5.482  
5.476  
5.385  
5.365  
4.947  
4.939  
4.917  
4.909  
4.481  
4.474  
4.207  
4.201  
4.191  
4.185  
4.175  
4.169  
3.992  
3.976  
3.963  
3.947  
3.872  
3.856  
3.843  
3.827  
2.897  
2.889  
2.877  
2.868  
2.860  
2.847  
2.840  
2.120  
1.984

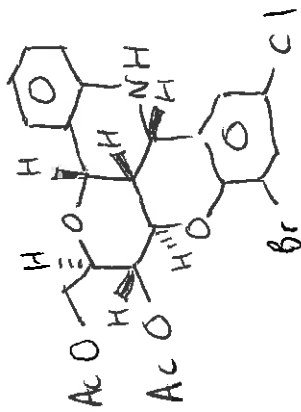


8.158  
 8.152  
 8.147  
 8.141  
 8.134  
 8.127  
 7.337  
 7.318  
 7.240  
 7.134  
 7.116  
 7.097  
 7.003  
 6.992  
 6.979  
 6.820  
 6.802  
 6.784  
 6.533  
 6.513  
 5.415  
 5.399  
 5.365  
 5.341  
 5.316  
 4.621  
 4.614  
 4.507  
 4.480  
 4.456  
 4.358  
 4.347  
 4.328  
 4.316  
 4.141  
 4.136  
 4.110  
 4.105  
 3.735  
 3.730  
 3.723  
 3.718  
 3.710  
 3.705  
 3.698  
 3.694  
 2.573  
 2.564  
 2.556  
 2.552  
 2.545  
 2.536  
 2.529  
 2.125  
 2.088



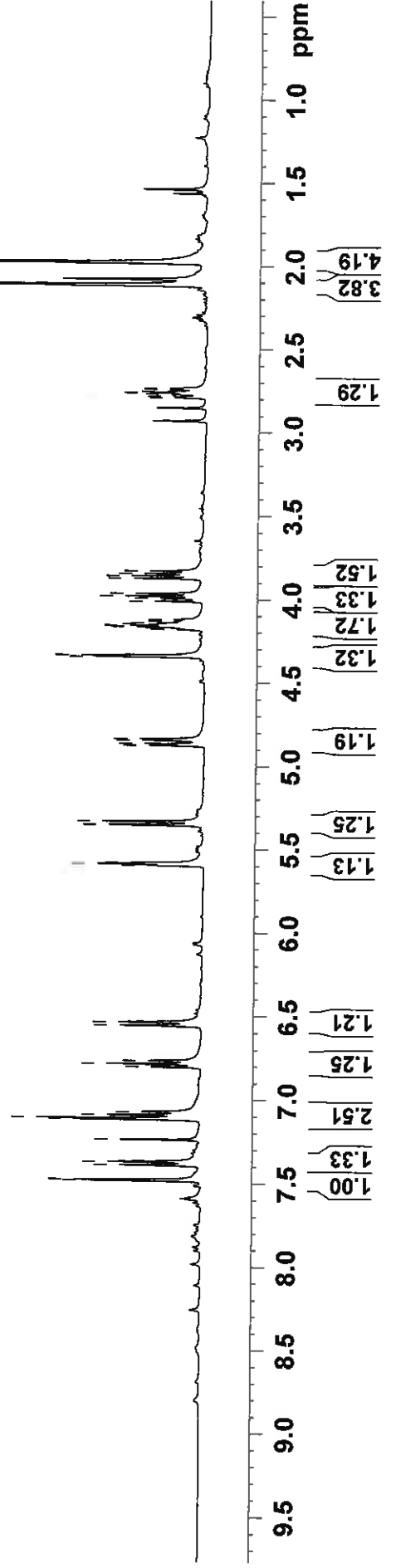
18h. 4C, conformed

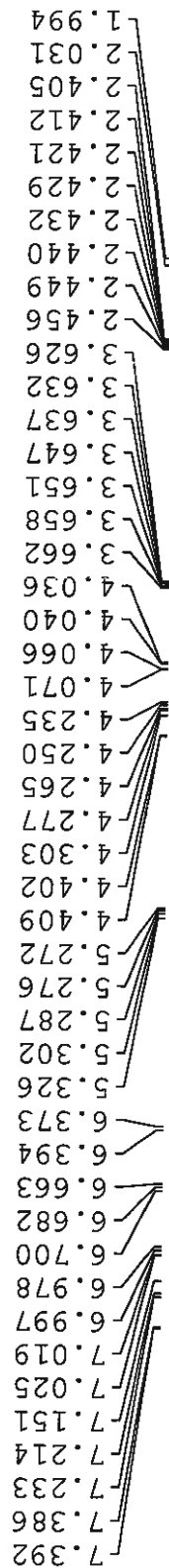


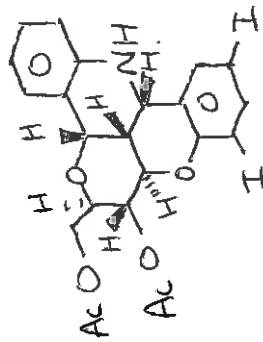


18 i 250 conformer

7.486  
7.480  
7.392  
7.373  
7.240  
7.118  
7.112  
7.091  
7.073  
6.804  
6.785  
6.767  
6.556  
6.536  
5.598  
5.589  
5.580  
5.354  
5.334  
4.878  
4.868  
4.848  
4.838  
4.347  
4.339  
4.183  
4.175  
4.167  
4.159  
4.152  
4.144  
4.133  
4.123  
4.013  
3.996  
3.983  
3.967  
3.876  
3.861  
3.847  
3.831  
2.793  
2.785  
2.773  
2.764  
2.756  
2.743  
2.736  
2.117  
1.980

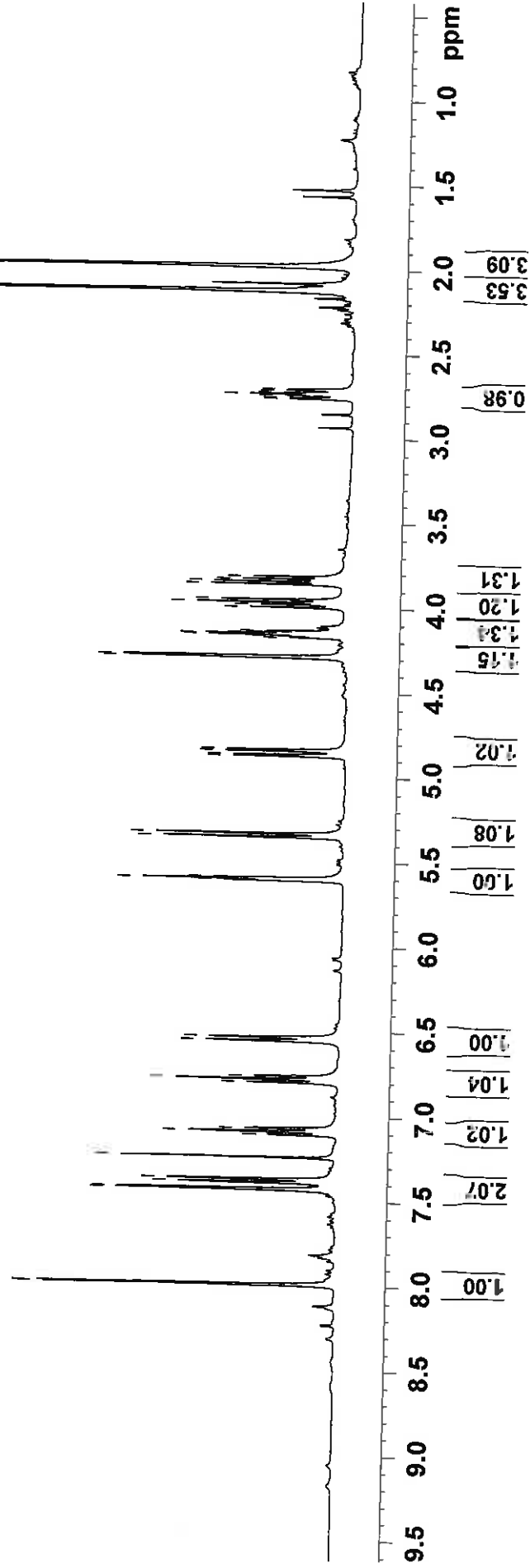






18j 2 S<sub>0</sub> conformer

7.994  
7.989  
7.431  
7.427  
7.389  
7.370  
7.241  
7.109  
7.107  
7.089  
7.071  
6.799  
6.780  
6.762  
6.555  
6.535  
5.611  
5.602  
5.593  
5.353  
5.333  
4.876  
4.866  
4.846  
4.836  
4.293  
4.286  
4.176  
4.168  
4.160  
4.152  
4.144  
4.136  
3.997  
3.981  
3.967  
3.951  
3.861  
3.845  
3.831  
3.816  
2.766  
2.758  
2.746  
2.737  
2.728  
2.716  
2.708  
2.127  
1.981



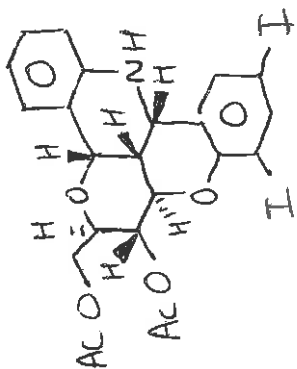
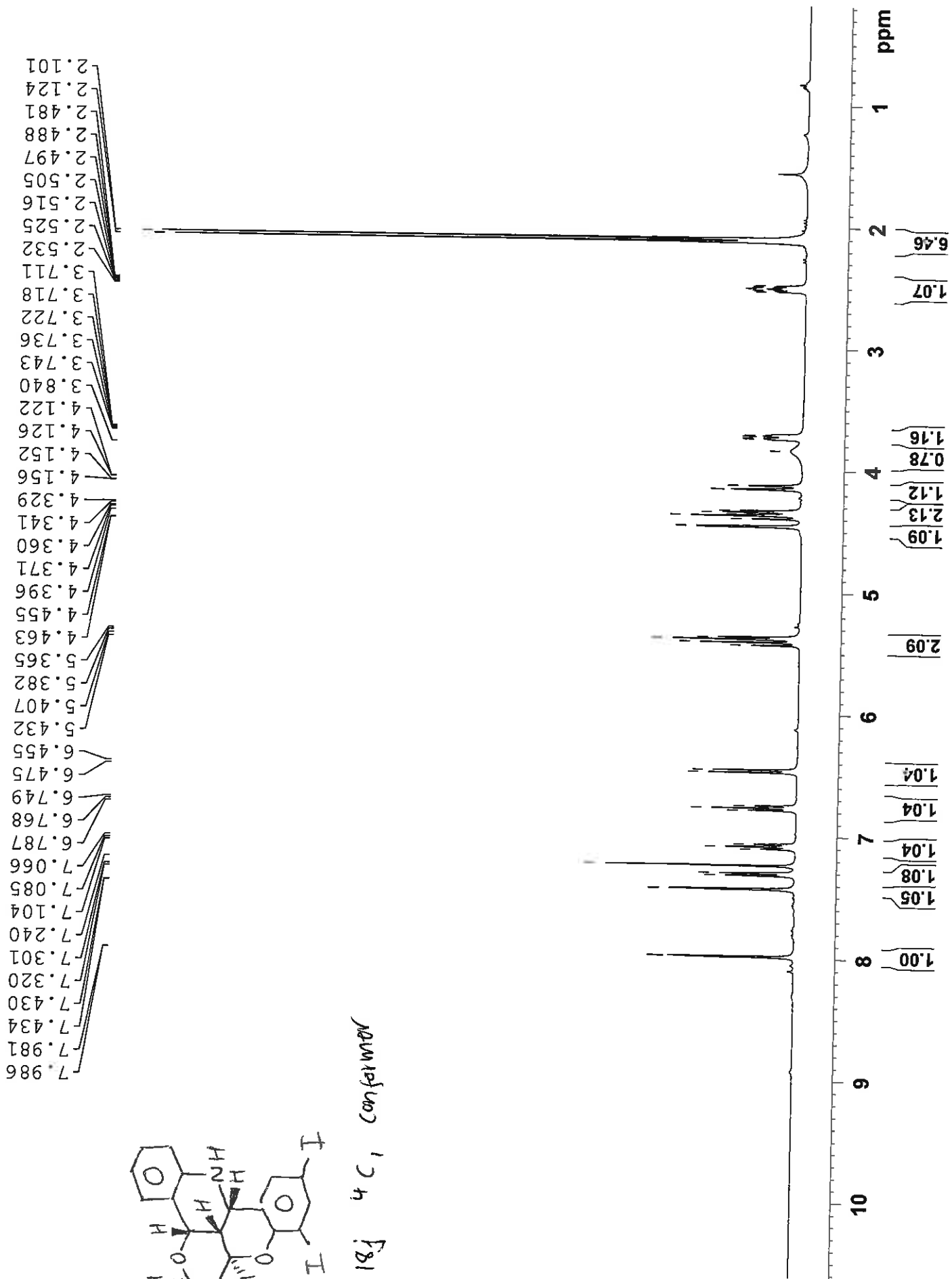
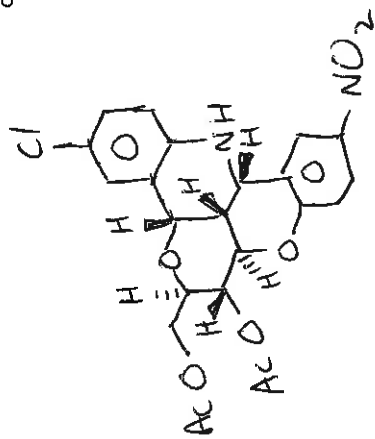
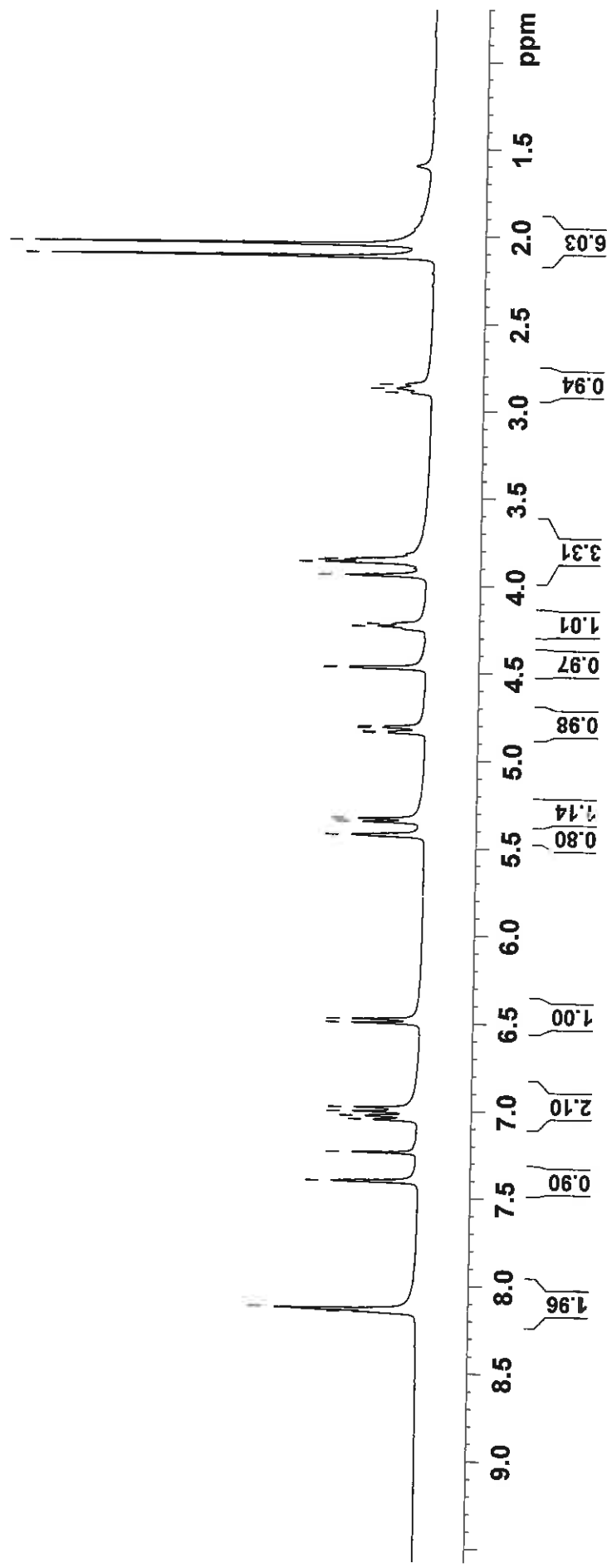


Fig 4 C, confirmed



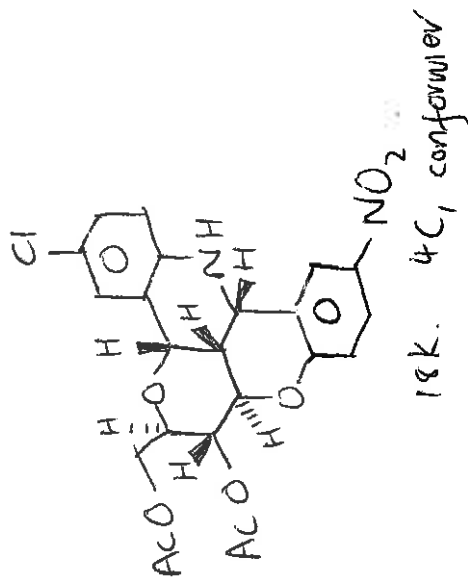


18k 2S<sub>2</sub> conformation

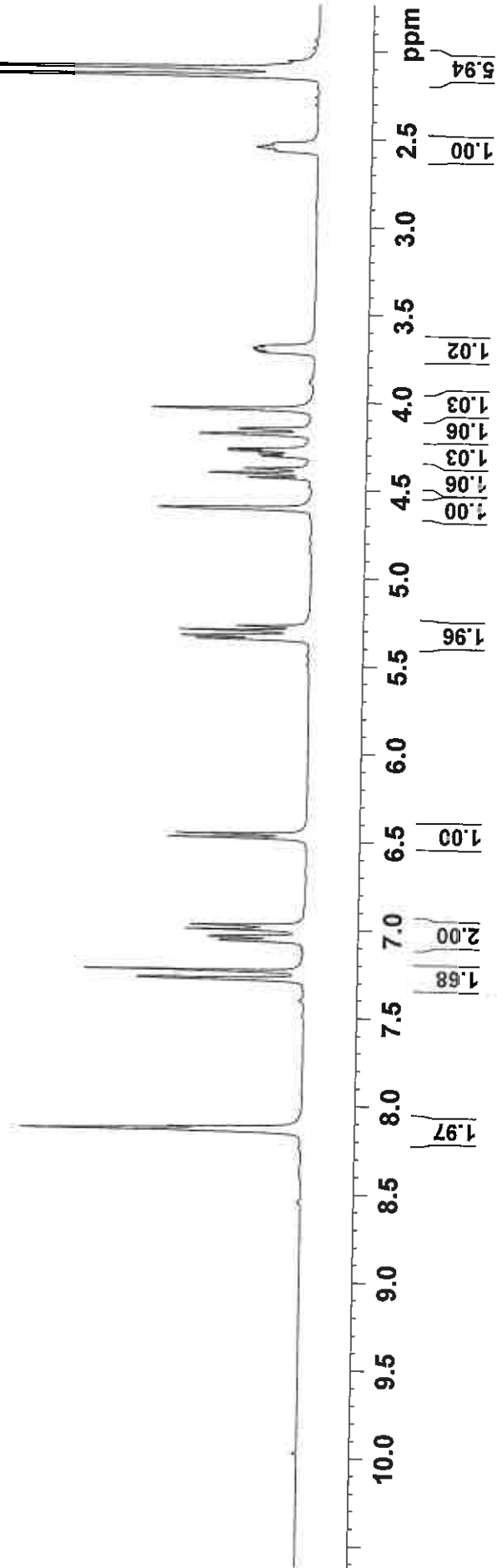
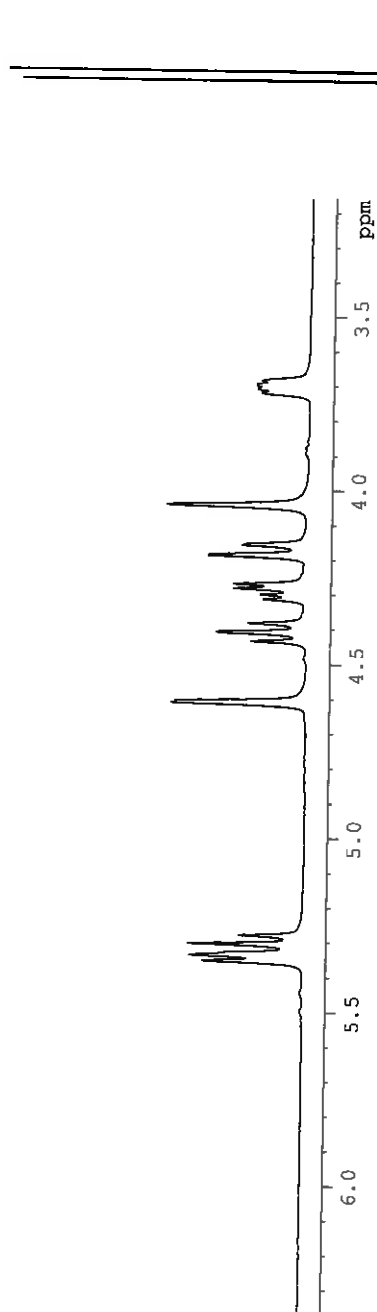


- 8.152
- 8.136
- 7.405
- 7.240
- 7.053
- 7.032
- 7.007
- 6.982
- 6.500
- 6.479
- 5.428
- 5.353
- 5.334
- 4.845
- 4.837
- 4.815
- 4.808
- 4.475
- 4.471
- 4.235
- 4.221
- 3.943
- 3.870
- 3.858
- 3.850
- 2.898
- 2.874
- 2.852
- 2.123
- 2.054

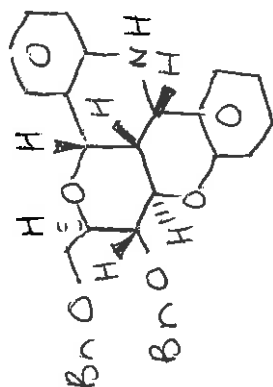




8.146  
 8.129  
 7.285  
 7.239  
 7.068  
 7.064  
 7.046  
 7.004  
 6.980  
 6.481  
 6.460  
 5.351  
 5.335  
 5.302  
 5.277  
 4.611  
 4.606  
 4.433  
 4.407  
 4.381  
 4.312  
 4.299  
 4.282  
 4.268  
 4.187  
 4.157  
 4.041  
 3.716  
 3.707  
 3.703  
 3.696  
 3.692  
 3.683  
 2.567  
 2.548  
 2.529  
 2.143  
 2.100

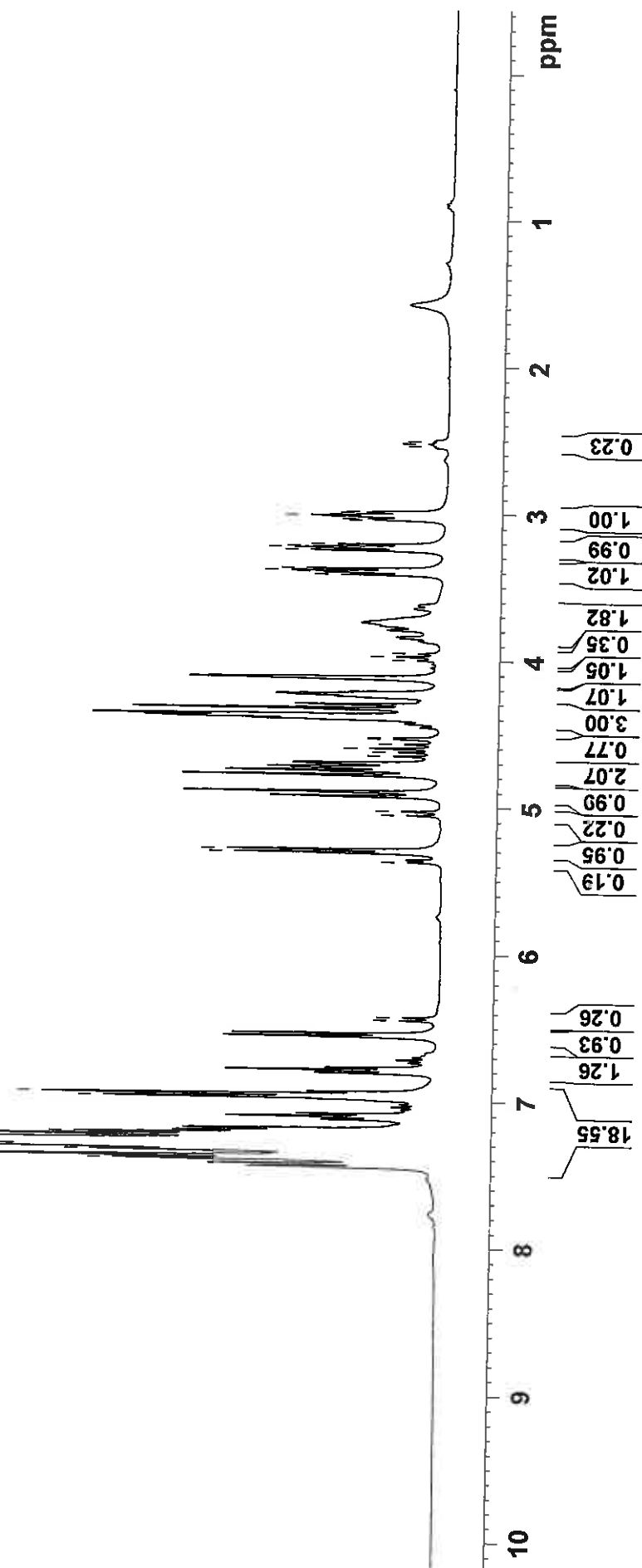


7.410  
 7.391  
 7.353  
 7.335  
 7.316  
 7.301  
 7.281  
 7.253  
 7.235  
 6.988  
 6.966  
 6.453  
 6.433  
 5.379  
 5.317  
 5.297  
 5.060  
 5.033  
 4.658  
 4.630  
 4.606  
 4.576  
 4.541  
 4.534  
 4.002  
 3.978  
 3.955  
 3.421  
 3.406  
 3.396  
 3.380  
 3.256  
 3.239  
 3.231  
 3.213  
 3.048  
 3.040  
 3.028  
 3.019  
 3.011  
 2.998  
 2.990  
 2.547  
 2.528  
 2.511

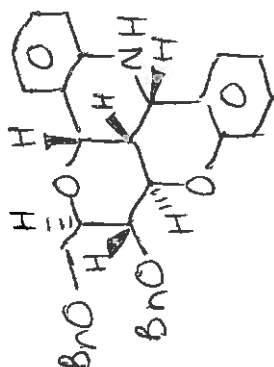


18m

$^1\text{H}$  and  $^{13}\text{C}$  NMR



7.356  
 7.301  
 7.281  
 7.267  
 7.250  
 7.239  
 7.216  
 7.077  
 6.954  
 6.946  
 6.933  
 6.928  
 6.779  
 6.760  
 6.528  
 6.508  
 5.281  
 5.261  
 4.897  
 4.867  
 4.754  
 4.724  
 4.704  
 4.696  
 4.675  
 4.666  
 4.371  
 4.357  
 4.349  
 4.341  
 4.298  
 4.269  
 4.209  
 4.202  
 4.096  
 4.088  
 4.081  
 3.368  
 3.358  
 3.342  
 3.218  
 3.201  
 3.193  
 2.981

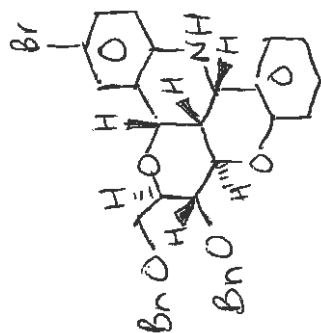


18M

$^2S_0$  conformer

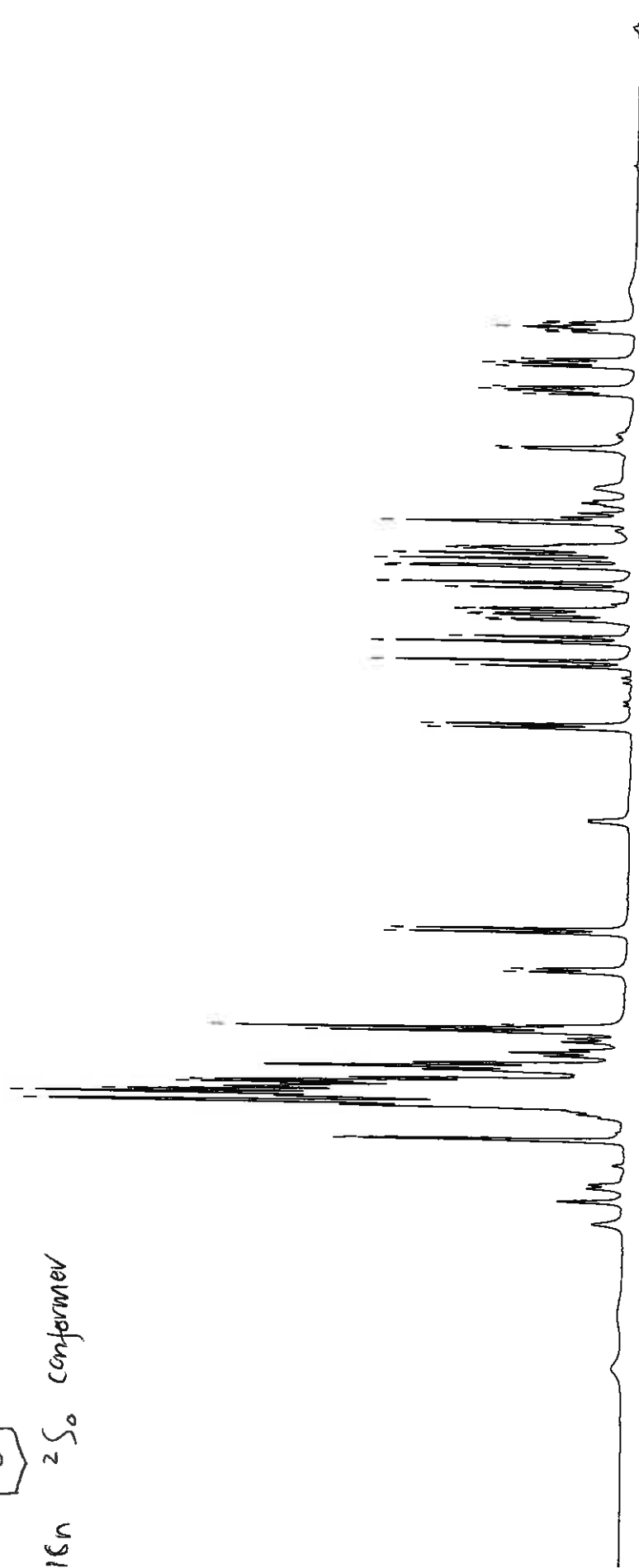
7.5  
 7.0  
 6.5  
 6.0  
 5.5  
 5.0  
 4.5  
 4.0  
 3.5  
 3.0  
 2.5 ppm

13.50  
 1.15  
 2.06  
 1.02  
 1.00  
 1.02  
 2.02  
 2.00  
 1.05  
 1.06  
 1.04  
 1.02  
 1.03  
 1.02  
 1.02



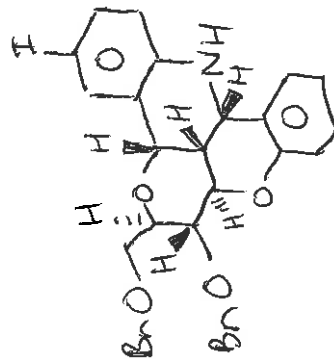
16n 2 So conformer

7.548  
7.544  
7.346  
7.301  
7.286  
7.239  
7.228  
6.940  
6.920  
6.901  
6.601  
6.582  
6.379  
6.358  
5.222  
5.202  
4.873  
4.843  
4.738  
4.708  
4.614  
4.607  
4.585  
4.577  
4.555  
4.550  
4.433  
4.403  
4.313  
4.306  
4.269  
4.240  
4.215  
4.208  
4.201  
3.645  
3.635  
3.335  
3.319  
3.310  
3.294  
3.176  
3.160  
3.151  
3.135  
2.982  
2.974  
2.962

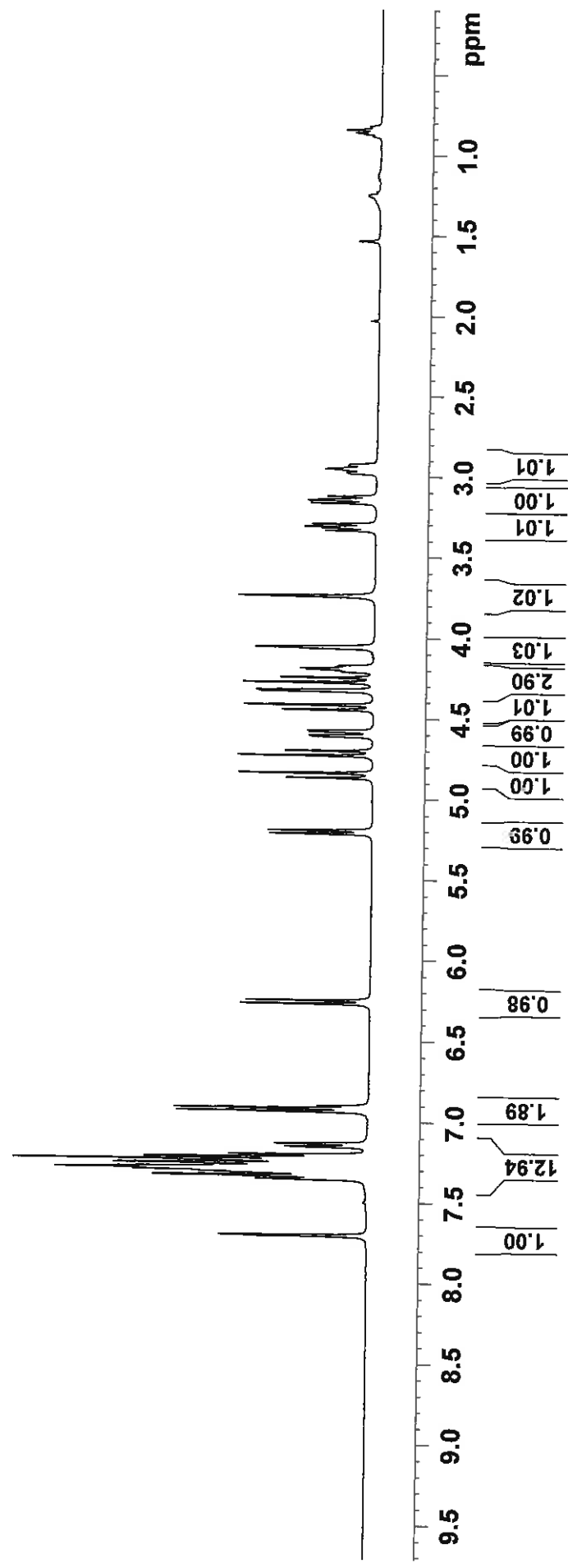


9.5 9.0 8.5 8.0 7.5 7.0 6.5 6.0 5.5 5.0 4.5 4.0 3.5 3.0 2.5 2.0 ppm

1.00  
19.64  
0.68  
0.99  
0.95  
0.97  
1.00  
1.89  
1.07  
3.37  
1.49  
0.95  
1.04  
1.06  
1.13

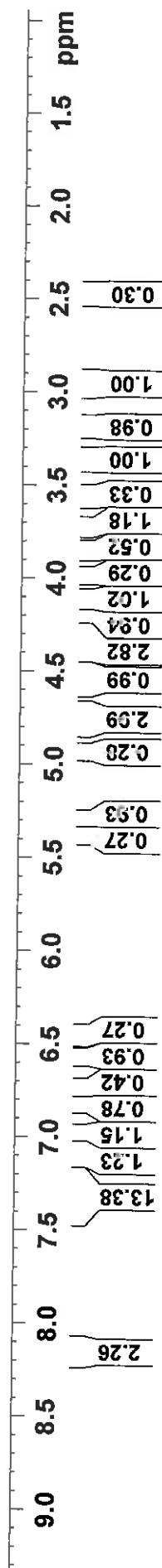
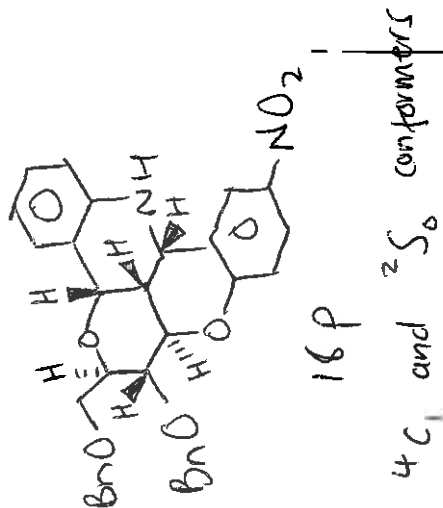


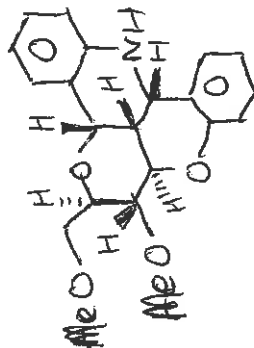
180 <sup>2</sup>S<sub>0</sub> conformer



- 7.707
- 7.295
- 7.289
- 7.264
- 7.240
- 7.155
- 7.137
- 6.938
- 6.919
- 5.903
- 5.273
- 5.252
- 5.217
- 5.197
- 4.870
- 4.840
- 4.733
- 4.703
- 4.615
- 4.607
- 4.585
- 4.577
- 4.448
- 4.418
- 4.332
- 4.324
- 4.277
- 4.247
- 4.205
- 4.197
- 4.190
- 4.181
- 4.066
- 4.059
- 3.743
- 3.337
- 3.321
- 3.312
- 3.296
- 3.167
- 3.150
- 3.142
- 3.125
- 2.982
- 2.976
- 2.954
- 2.933
- 2.926

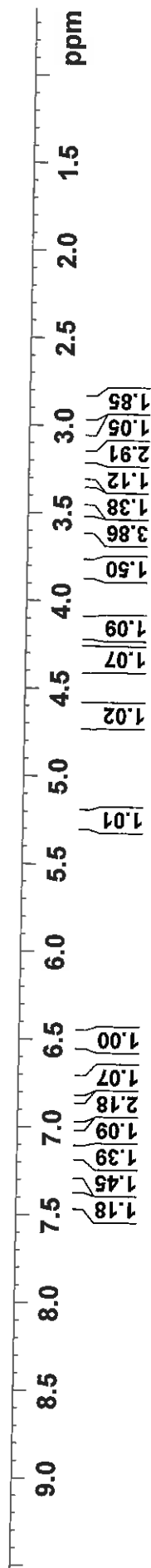
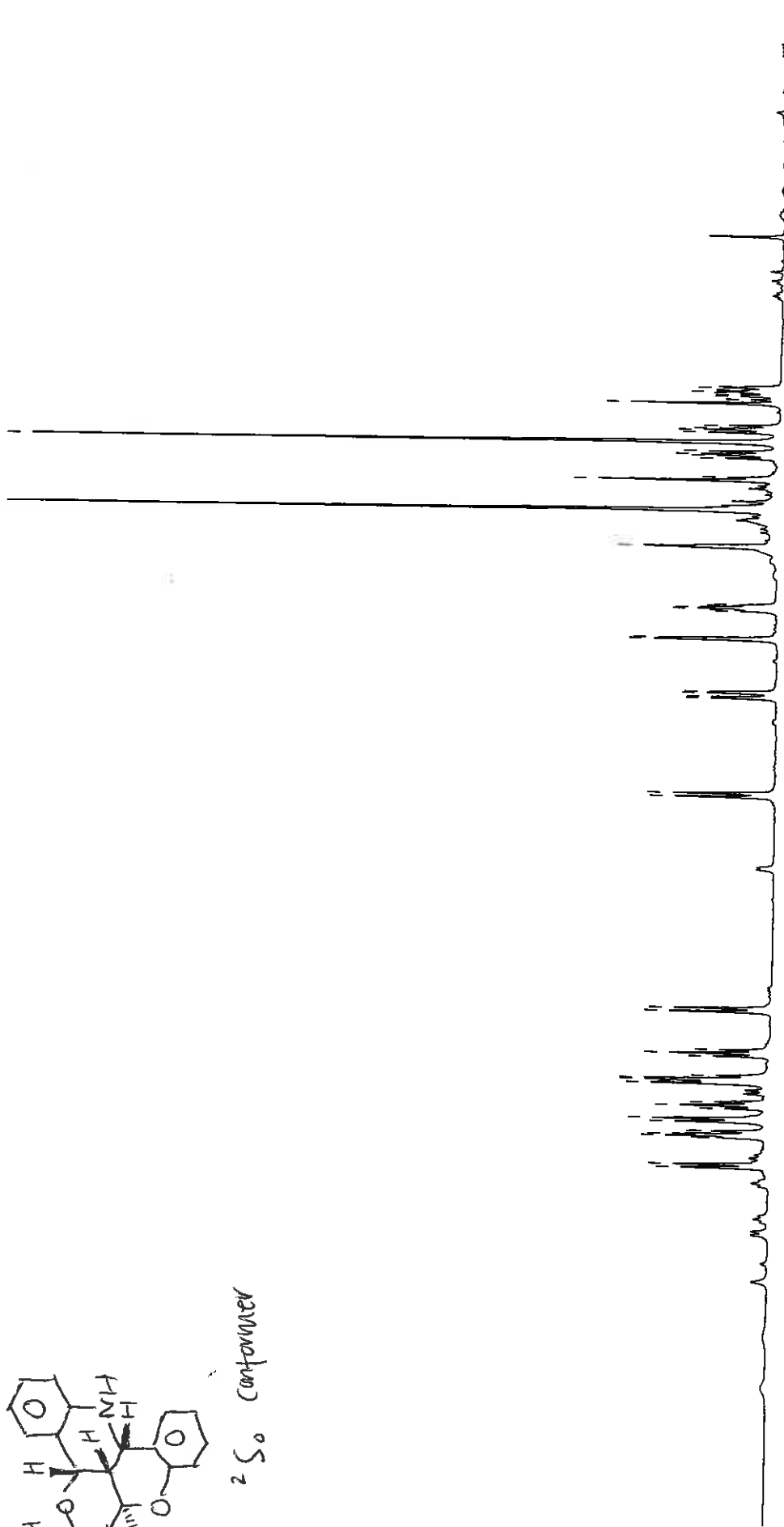
8.166  
 8.159  
 8.137  
 7.315  
 7.299  
 7.294  
 7.275  
 7.240  
 7.203  
 7.123  
 7.104  
 7.085  
 6.817  
 6.799  
 6.780  
 6.566  
 6.546  
 5.296  
 5.275  
 4.906  
 4.802  
 4.773  
 4.751  
 4.743  
 4.725  
 4.695  
 4.605  
 4.576  
 4.564  
 4.533  
 4.398  
 4.391  
 4.365  
 4.335  
 4.294  
 4.264  
 4.200  
 4.192  
 4.132  
 4.125  
 4.117  
 3.872  
 3.755  
 3.736  
 3.380  
 3.365  
 3.354  
 3.339  
 3.208  
 3.191  
 3.183  
 3.165  
 2.984  
 2.958  
 2.935

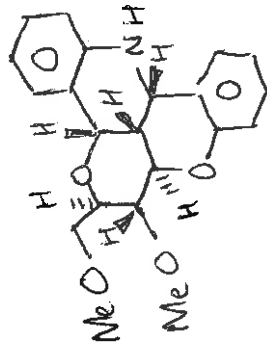




18g 250 container

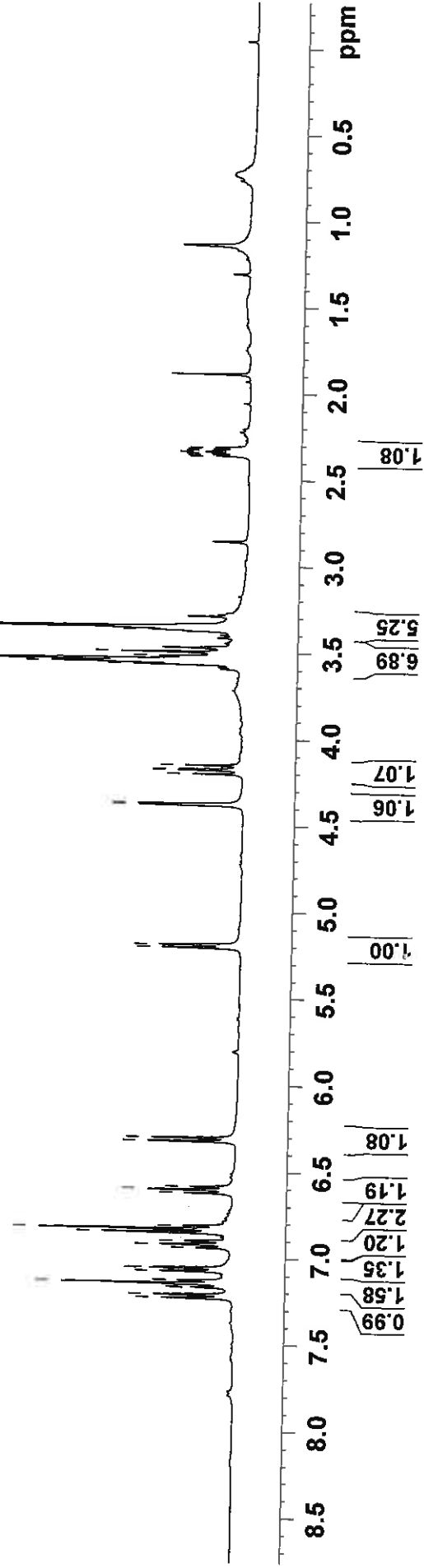
7.424  
7.405  
7.251  
7.247  
7.239  
7.230  
7.212  
7.209  
7.156  
7.138  
7.079  
7.059  
7.041  
6.931  
6.922  
6.910  
6.904  
6.885  
6.771  
6.753  
6.734  
6.511  
6.491  
5.253  
5.233  
4.678  
4.670  
4.648  
4.640  
4.332  
4.325  
4.160  
4.151  
4.145  
4.135  
3.794  
3.788  
3.576  
3.402  
3.385  
3.273  
3.256  
3.248  
3.231  
3.177  
3.121  
3.104  
3.096  
3.079  
2.949  
2.908  
2.901  
2.888  
2.880  
2.858



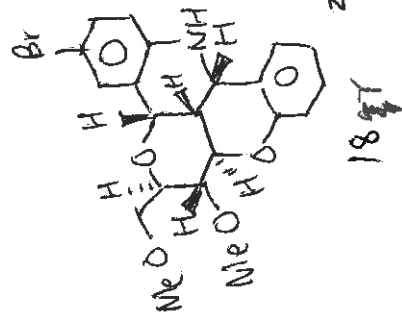


18g 4c, confomer

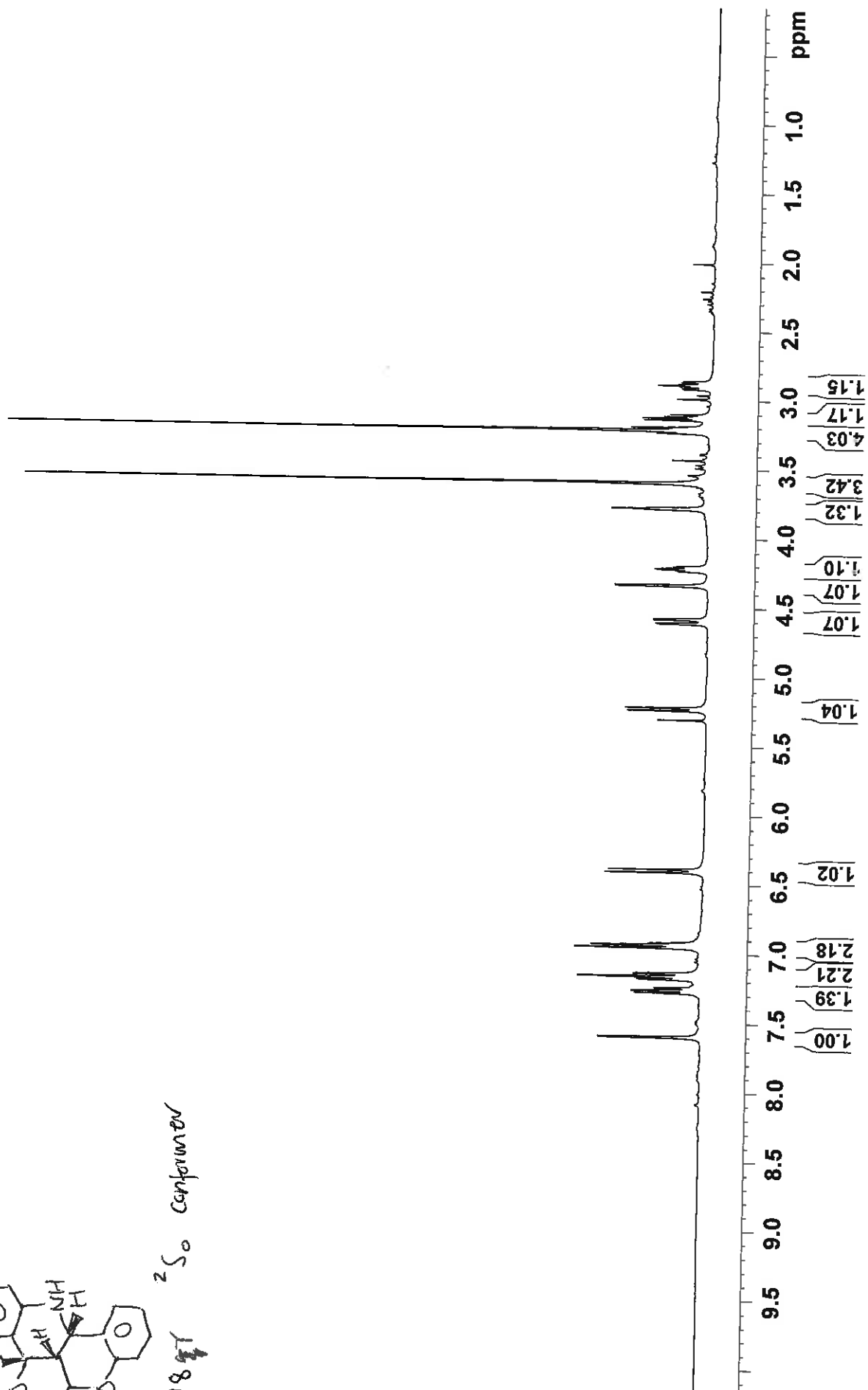
7.232  
7.213  
7.172  
7.168  
7.147  
7.133  
7.129  
7.078  
7.059  
7.056  
6.940  
6.921  
6.902  
6.853  
6.833  
6.814  
6.623  
6.605  
6.587  
6.324  
6.305  
5.206  
5.190  
4.382  
4.375  
4.202  
4.179  
4.175  
4.152  
3.569  
3.559  
3.552  
3.542  
3.521  
3.497  
3.370  
3.356  
2.364  
2.356  
2.348  
2.340  
2.336  
2.328  
2.320  
2.312

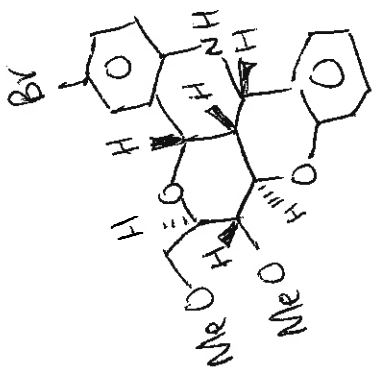






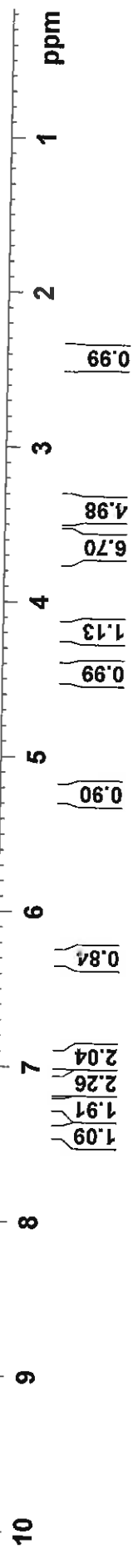
7.602  
7.598  
7.285  
7.280  
7.266  
7.247  
7.243  
7.187  
7.183  
7.165  
7.144  
7.138  
6.956  
6.939  
6.936  
6.923  
6.412  
6.391  
5.240  
5.221  
4.616  
4.608  
4.586  
4.579  
4.343  
4.335  
4.239  
4.233  
4.222  
4.218  
4.207  
4.201  
3.791  
3.784  
3.777  
3.600  
3.239  
3.220  
3.197  
3.143  
3.129  
3.118  
3.103  
2.991  
2.902  
2.892  
2.884

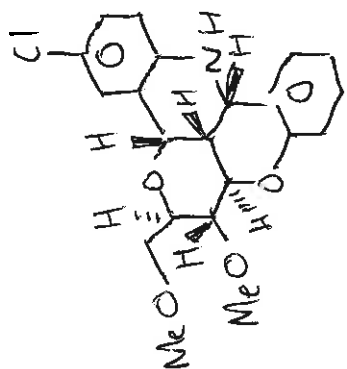




18v 4C, conformer

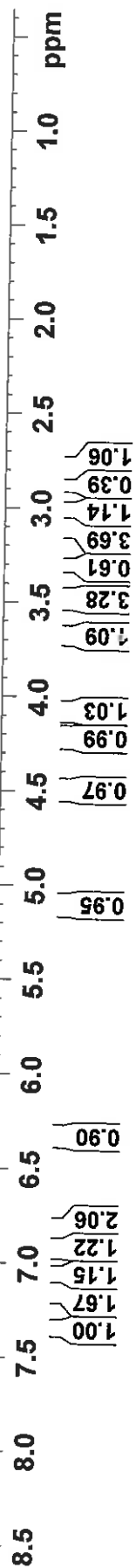
7.413  
7.272  
7.269  
7.248  
7.240  
7.234  
7.158  
7.141  
7.109  
7.104  
7.088  
6.949  
6.930  
6.913  
6.309  
6.288  
5.242  
5.226  
4.454  
4.447  
4.218  
4.195  
4.191  
4.168  
3.639  
3.457  
2.450  
2.442  
2.434  
2.426  
2.414  
2.406  
2.398

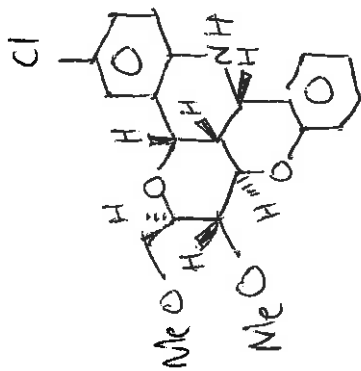




185 2S, conformer

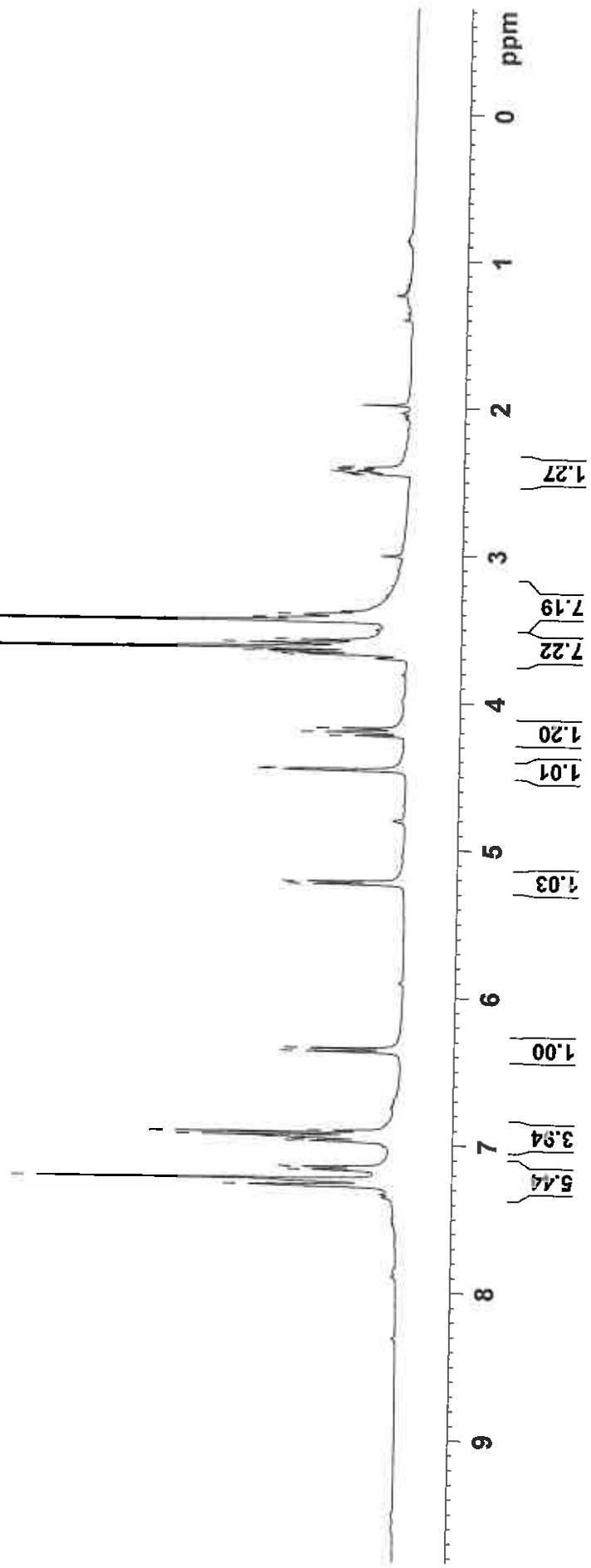
7.338  
7.160  
7.157  
7.144  
7.122  
7.064  
7.045  
6.913  
6.892  
6.830  
6.811  
6.793  
6.342  
6.321  
5.119  
5.099  
4.514  
4.507  
4.485  
4.478  
4.236  
4.229  
4.104  
4.098  
4.088  
4.072  
3.666  
3.473  
3.408  
3.358  
3.303  
3.122  
3.024  
3.009  
2.999  
2.984  
2.864  
2.816  
2.809  
2.796  
2.788  
2.779  
2.767  
2.760

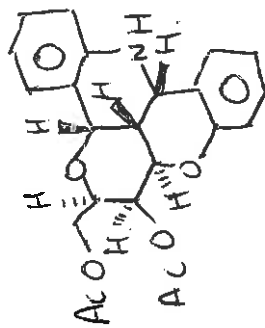




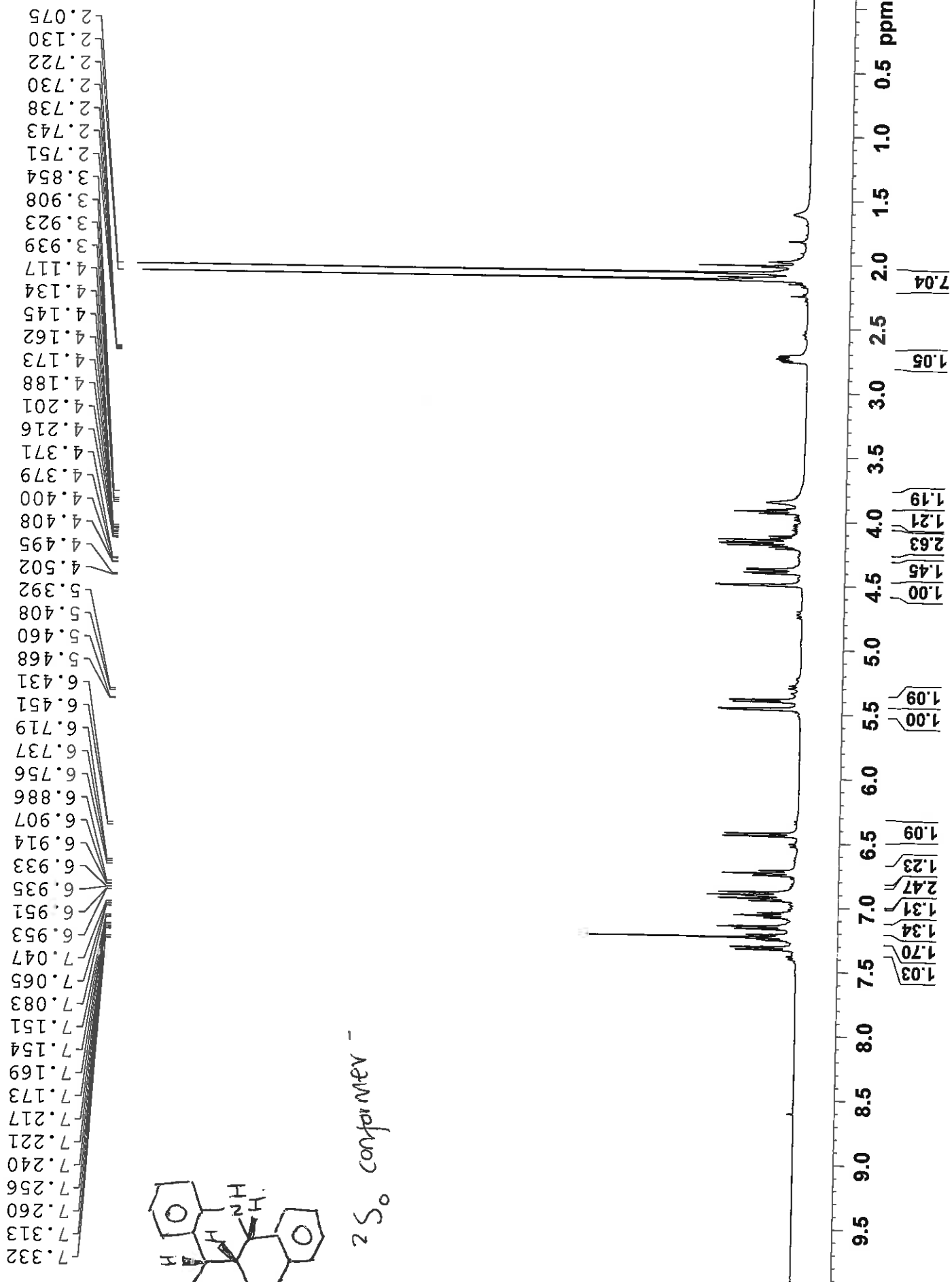
18S 4C<sub>1</sub> conformer

7.284  
7.239  
7.174  
7.156  
6.981  
6.976  
6.959  
6.947  
6.928  
6.910  
6.373  
6.351  
5.237  
5.221  
4.464  
4.457  
4.229  
4.206  
4.179  
3.679  
3.671  
3.658  
3.654  
3.636  
3.604  
3.581  
3.454  
3.439  
3.434  
3.409  
2.456  
2.449  
2.440  
2.432  
2.421  
2.412  
2.405

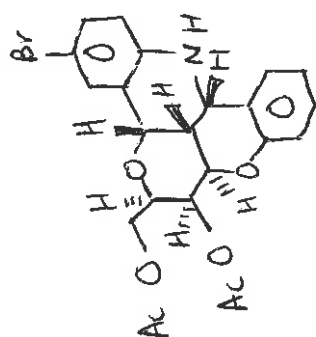




18f 2S<sub>0</sub> conformer -

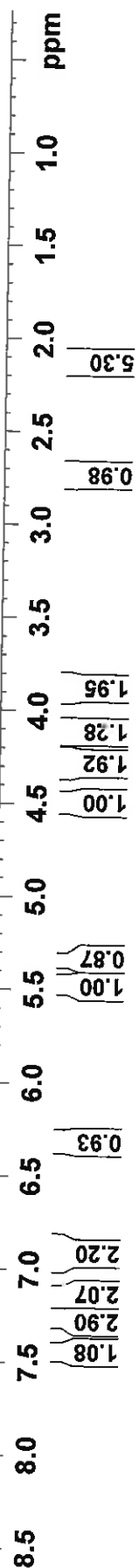


7.270  
7.266  
7.240  
7.232  
7.228  
7.167  
7.164  
7.149  
7.145  
7.130  
7.124  
6.961  
6.942  
6.924  
6.911  
6.890  
6.340  
6.319  
5.467  
5.460  
5.354  
5.338  
5.279  
4.490  
4.482  
4.327  
4.319  
4.298  
4.290  
4.264  
4.253  
4.236  
4.224  
4.134  
4.115  
4.106  
4.086  
3.922  
3.911  
3.903  
3.891  
3.865  
2.767  
2.760  
2.751  
2.743  
2.739  
2.731  
2.722  
2.715  
2.137  
2.130

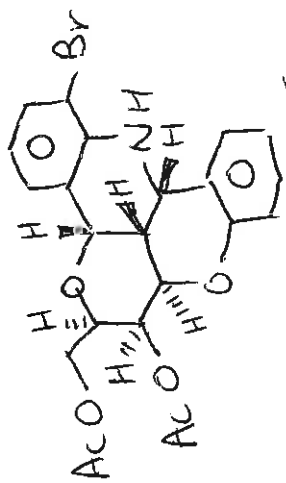


18u

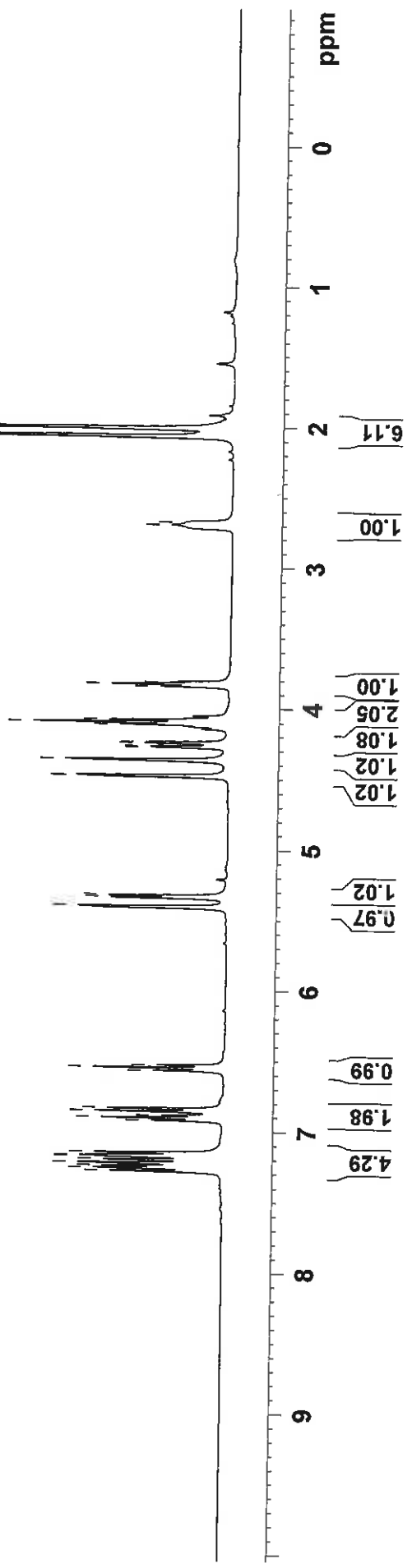
2S<sub>0</sub> conformer



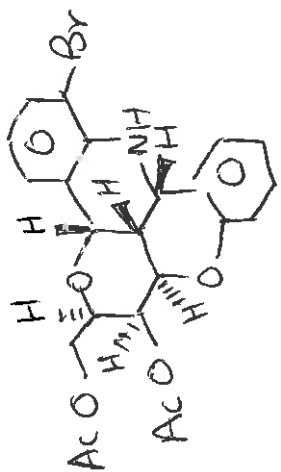
7.285  
 7.265  
 7.250  
 7.229  
 7.205  
 7.181  
 7.154  
 6.926  
 6.908  
 6.889  
 6.862  
 6.842  
 6.572  
 6.553  
 6.534  
 5.414  
 5.409  
 5.346  
 5.330  
 4.484  
 4.479  
 4.368  
 4.277  
 4.271  
 4.248  
 4.242  
 4.118  
 4.103  
 4.085  
 3.846  
 3.830  
 3.815  
 2.697  
 2.680  
 2.071  
 2.013



18V 250 contained



7.378  
7.359  
7.350  
7.330  
7.286  
7.267  
7.240  
7.215  
7.197  
6.981  
6.962  
6.943  
6.934  
6.913  
6.651  
6.631  
6.612  
5.489  
5.475  
5.470  
5.456  
5.318  
5.297  
4.707  
4.687  
4.677  
4.657  
4.425  
4.418  
4.405  
4.399  
4.381  
4.056  
4.045  
4.026  
4.015  
3.970  
3.950  
3.941  
3.921  
2.584  
2.581  
2.560  
2.537  
2.534  
2.107  
1.994



4C, container

