

Supporting Information

Inhibition of HL-60 cells growth via cell cycle arrest and apoptosis induction by a cycloartane-labdane heterodimer from *Pseudolarix amabilis*

Xinhui Tian,^{a,⊥} Niao Yang,^{a,⊥} Bo Li,^{b,⊥} Jianping Zhang,^a Xike Xu,^a Rongcai Yue,^a

Huiliang Li,^a Liping Chen,^a Yunheng Shen^{a,*} and Weidong Zhang^{a,b,*}

^a *School of Pharmacy, Second Military Medical University, Shanghai 200433, P. R. China*

^b *Innovative Research Center of Traditional Chinese Medicine, Shanghai Institute of Pharmaceutical Industry, Shanghai 201204, P. R. China*

⊥ These authors contributed equally to this work.

* To whom correspondence should be addressed.

Tel: +86-21-81871244; +86-21-81871245

Email: wdzhangy@hotmail.com, shenyunheng@hotmail.com

Contents

Figure S1 HRESIMS spectrum of pseudolaridimer C (**1**)

Figure S2 400 MHz ^1H NMR spectrum of pseudolaridimer C (**1**) in pyridine- d_5

Figure S3 100 MHz ^{13}C NMR spectrum of pseudolaridimer C (**1**) in pyridine- d_5

Figure S4 100 MHz DEPT NMR spectrum of pseudolaridimer C (**1**) in pyridine- d_5

Figure S5 400 MHz HSQC NMR spectrum of pseudolaridimer C (**1**) in pyridine- d_5

Figure S6 400 MHz ^1H - ^1H COSY NMR spectrum of pseudolaridimer C (**1**) in pyridine- d_5

Figure S7 400 MHz HMBC NMR spectrum of pseudolaridimer C (**1**) in pyridine- d_5

Figure S8 400 MHz ROESY NMR spectrum of pseudolaridimer C (**1**) in pyridine- d_5

Figure S1 HRESIMS spectrum of pseudolaridimer C (1)

Elemental Composition Report

Single Mass Analysis

Tolerance = 10.0 PPM / DBE: min = -1.5, max = 50.0

Element prediction: Off

Number of isotope peaks used for i-FIT = 3

Monoisotopic Mass, Even Electron Ions

10 formula(e) evaluated with 1 results within limits (up to 50 best isotopic matches for each mass)

Elements Used:

C: 40-60 H: 70-80 O: 1-10 Na: 1-1

SIPI

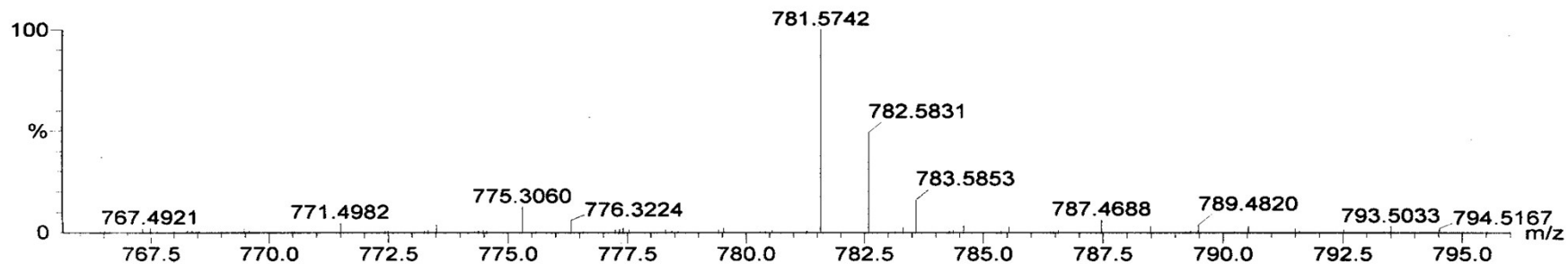
PK-LB-10 M.W=758

Q12-1447H1 40 (1.408) AM (Cen,2, 80.00, Ar,5000.0,801.34,1.00); Sm (SG, 2x3.00); Sb (1,40.00); Sb (1,40.00); Sb (1,40.00); Cm (26:45)

Q-Tof micro
YA019

14:48:51,01-Sep-2012

7.36e+003



Minimum:				-1.5			
Maximum:		5.0	10.0	50.0			
Mass	Calc. Mass	mDa	PPM	DBE	i-FIT	Formula	
781.5742	781.5747	-0.5	-0.6	11.5	29.2	C50 H78 O5 Na	

Figure S2 400 MHz ^1H NMR spectrum of pseudolaridimer C (**1**) in pyridine- d_5

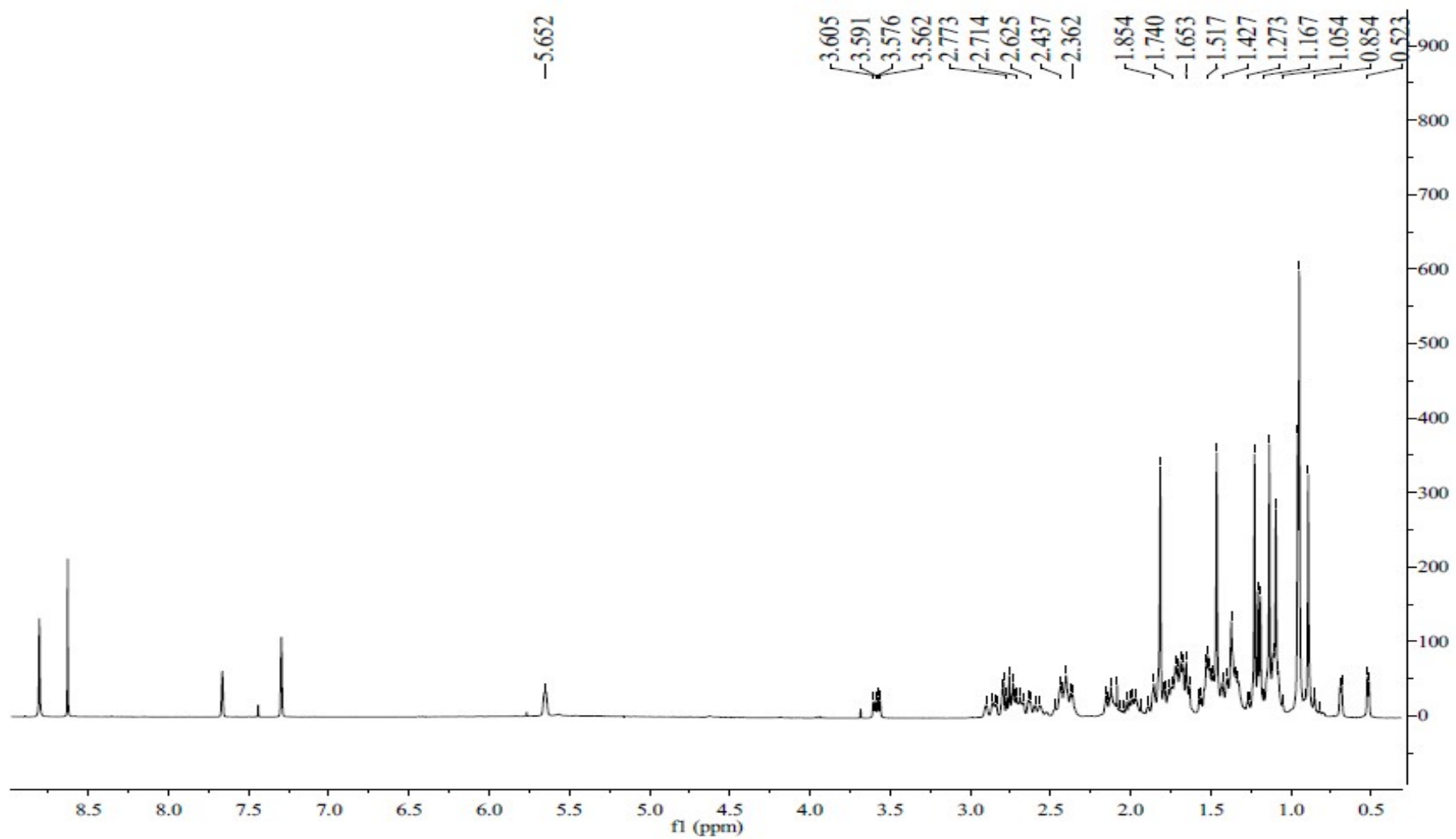


Figure S3 100 MHz ^{13}C NMR spectrum of pseudolaridimer C (**1**) in pyridine- d_5

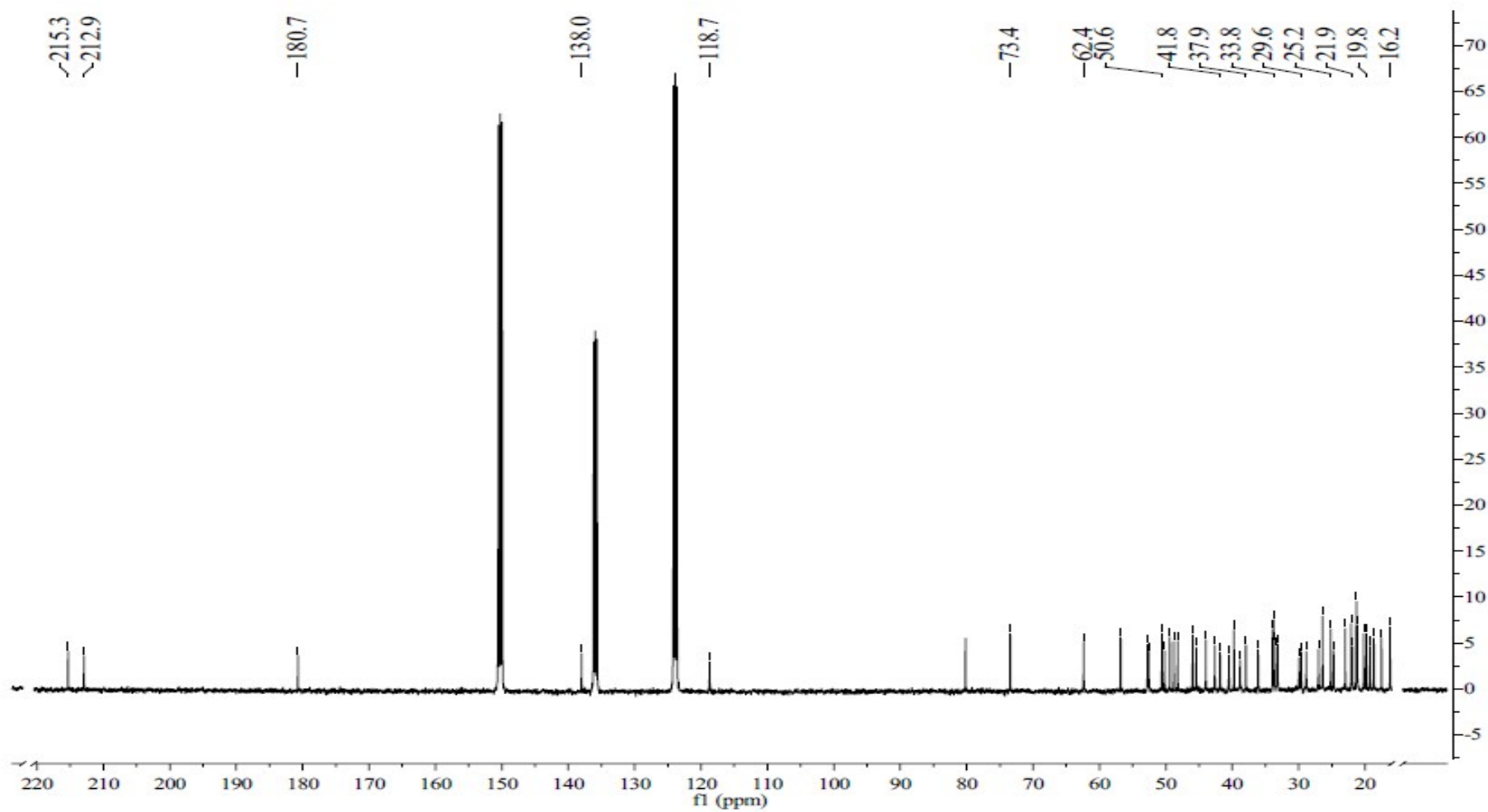


Figure S4 100 MHz DEPT NMR spectrum of pseudolaridimer C (**1**) in pyridine-*d*₅

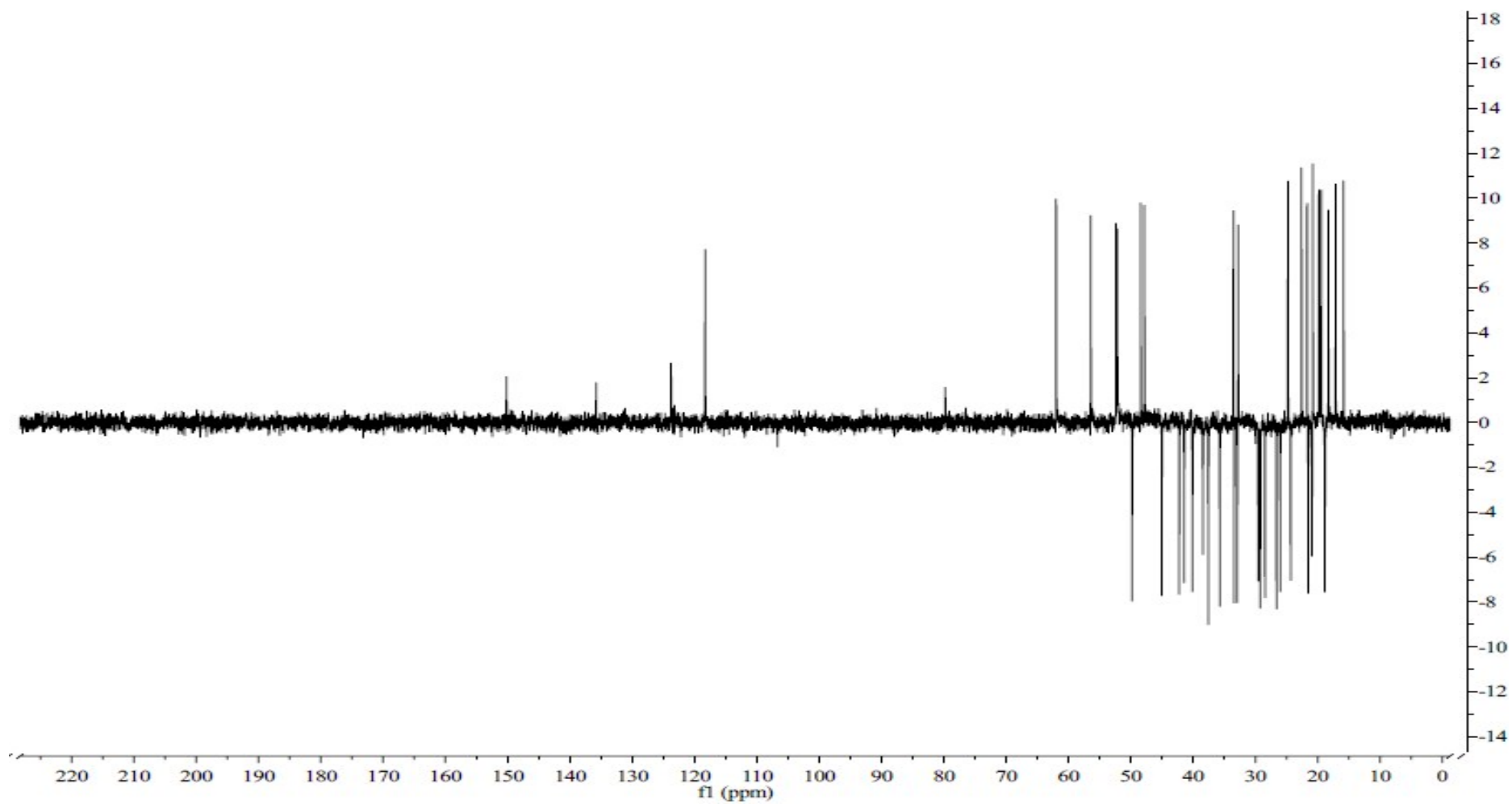


Figure S5 400 MHz HSQC NMR spectrum of pseudolaridimer C (1) in pyridine- d_5

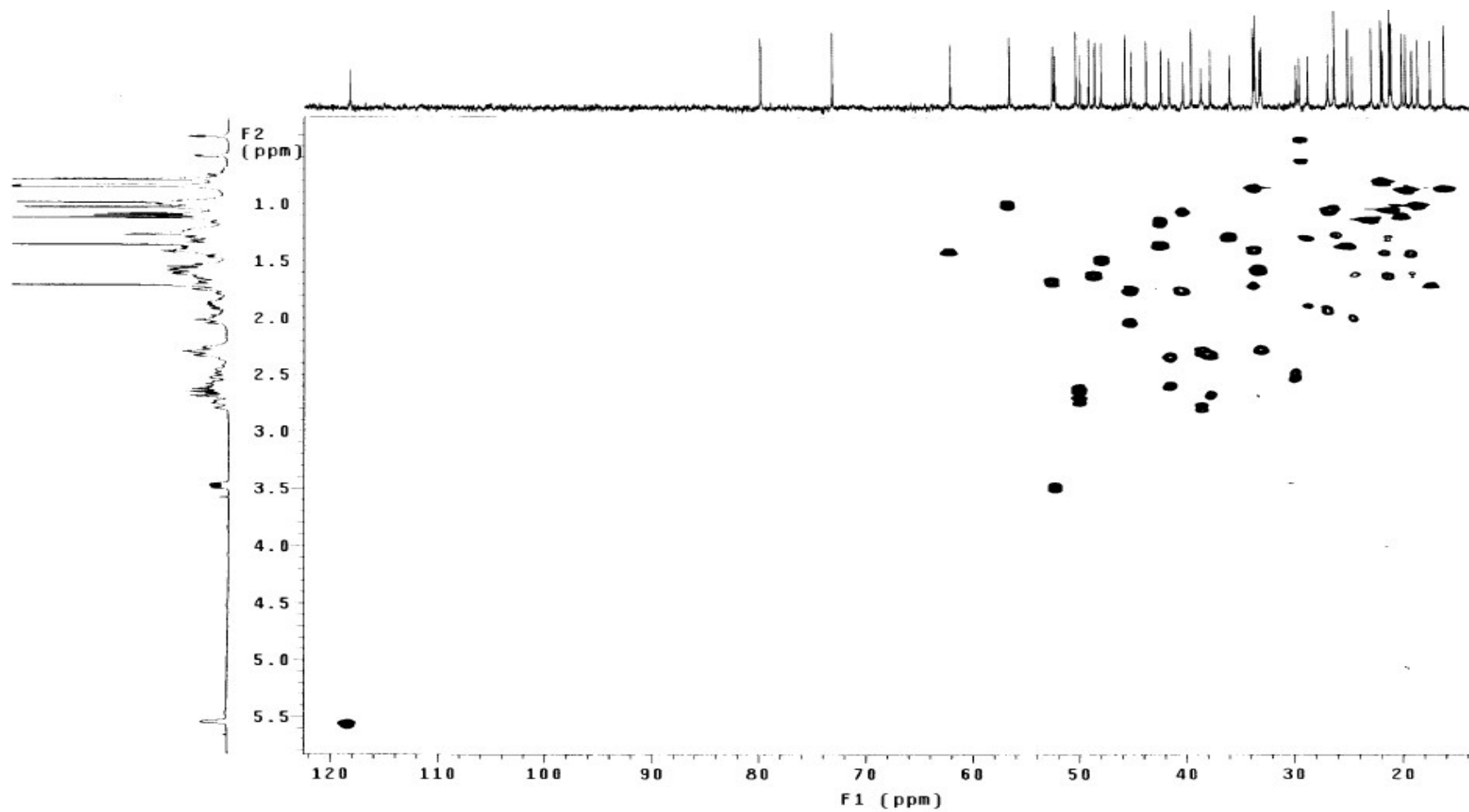


Figure S6 400 MHz ^1H - ^1H COSY NMR spectrum of pseudolaridimer C (1) in pyridine- d_5

Solvent: pyridine
Ambient temperature
Mercury-400BB "siem401"

Relax. delay 1.000 sec
COSY 90-90
Acq. time 0.160 sec
Width 6410.3 Hz
ZD Width 5410.3 Hz
4 repetitions
300 increments
OBSERVE H1, 400.1645888 MHz
DATA PROCESSING
Sq. sine bell 0.080 sec
F1 DATA PROCESSING
Sq. sine bell 0.024 sec
FT size 2048 x 2048
Total time 26 min, 9 sec

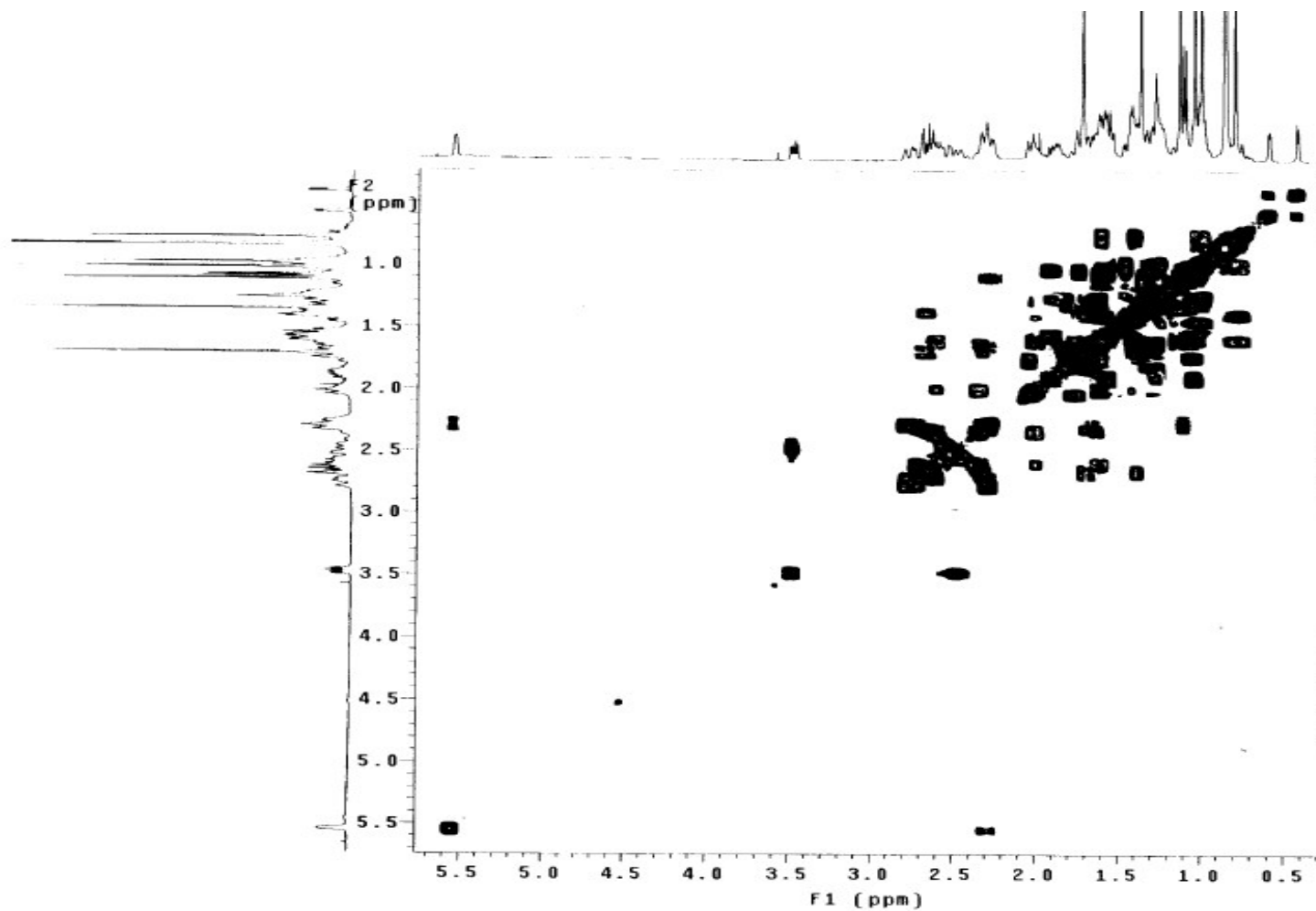


Figure S7 400 MHz HMBC NMR spectrum of pseudolaridimer C (1) in pyridine-*d*₅

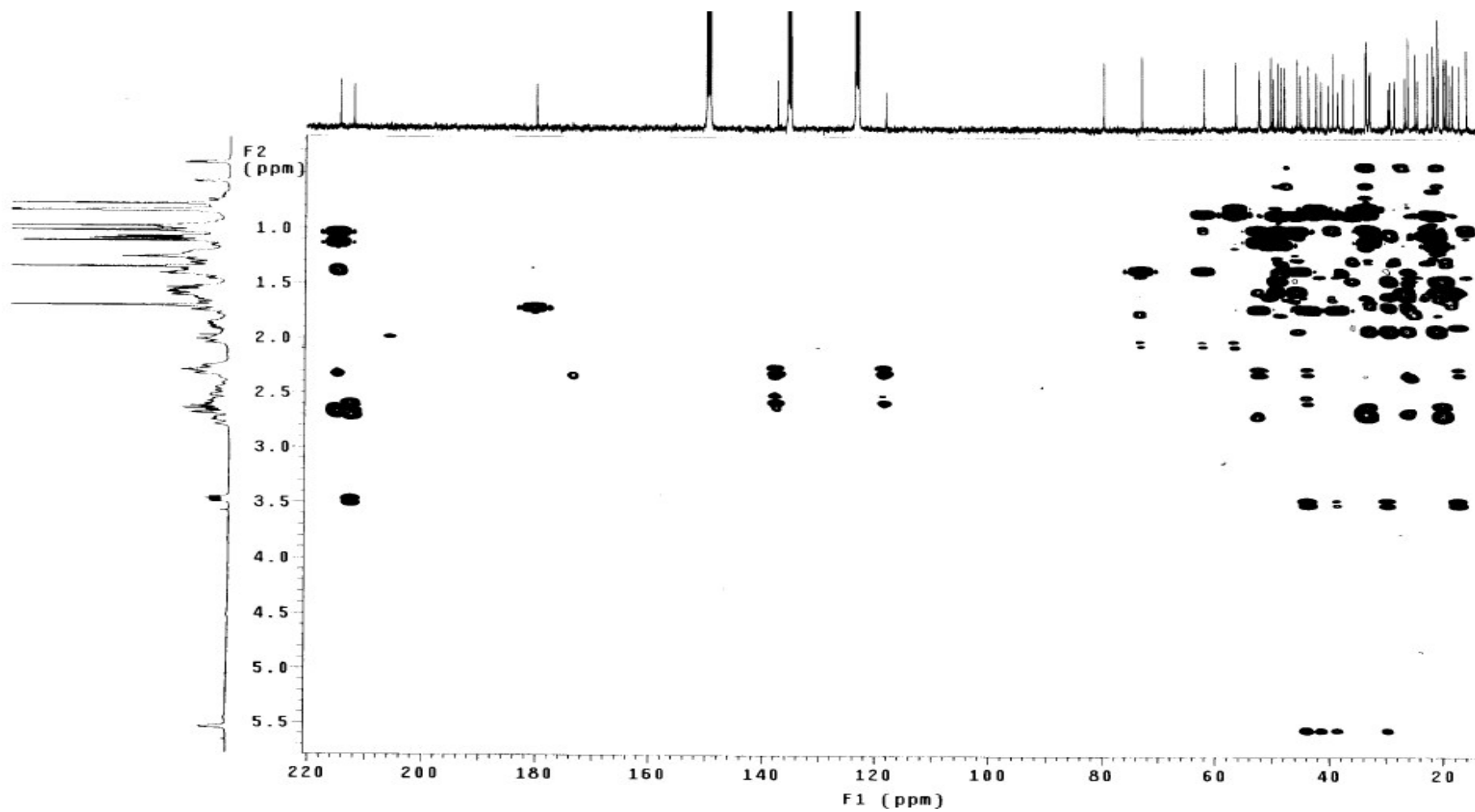


Figure S8 400 MHz ROESY NMR spectrum of pseudolaridimer C (1) pyridine-*d*₅

