

Supplemental Information:

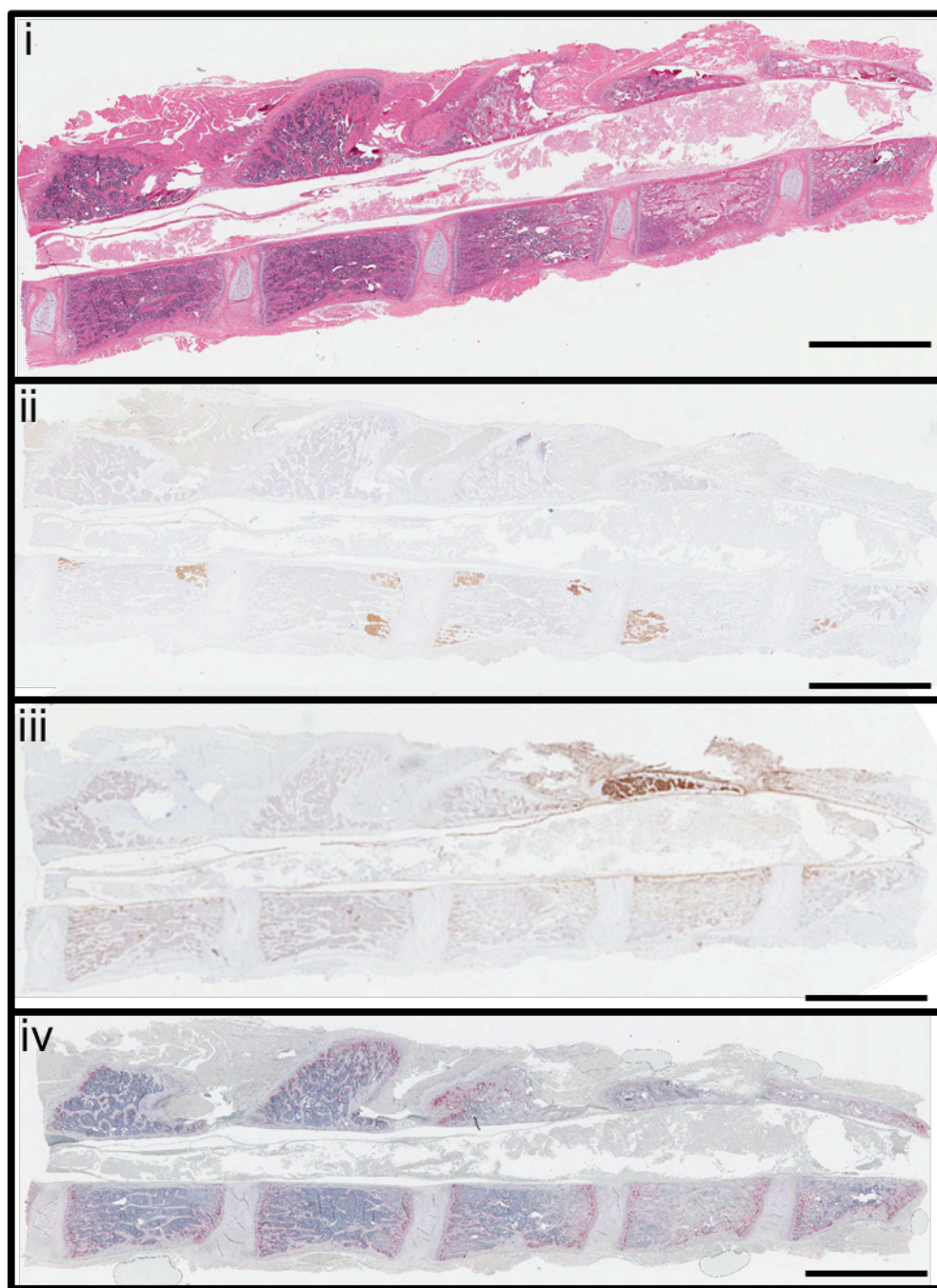


Figure S1. . Immunohistology images of the spine from the animal that demonstrated hindlimb paralysis 48h post PMB-PDT treatment of (i) H&E, (ii) hEGFr, (iii) TUNEL and (iv) TRAP staining. Scale bar represents 4mm.

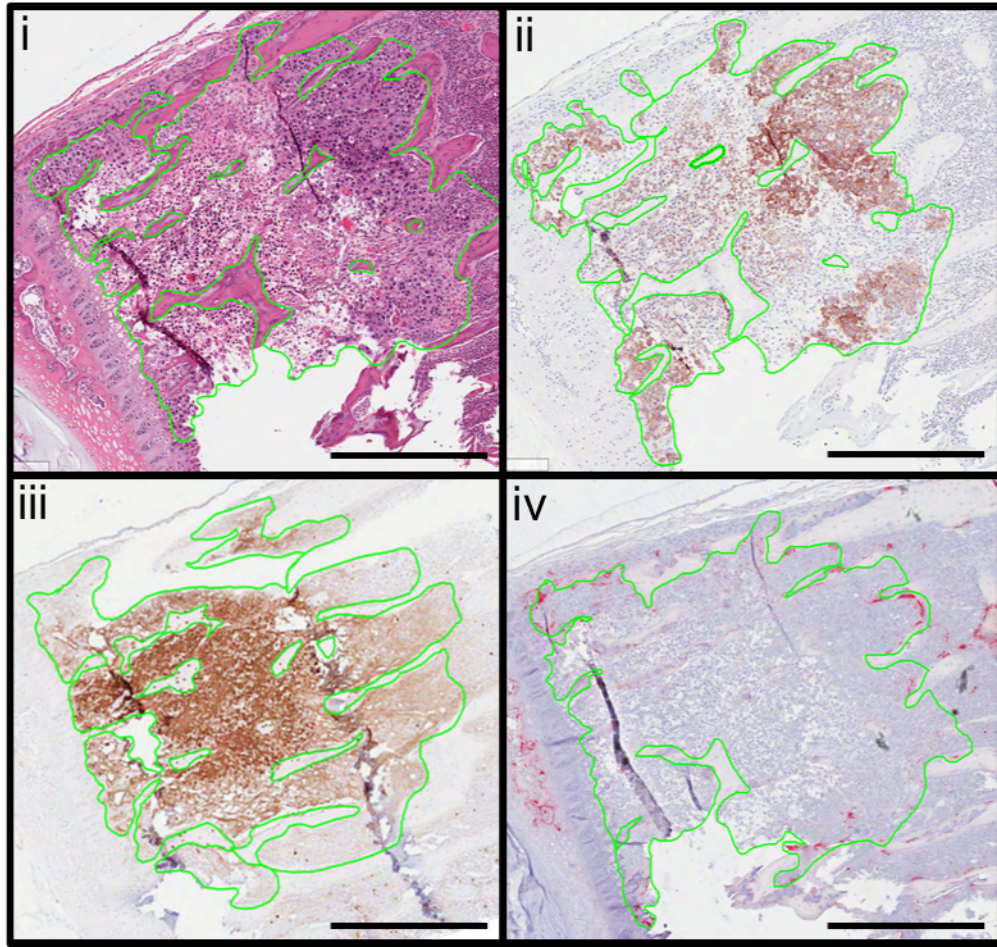


Figure S2. Representative images of the boundaries (green) drawn around tumor-involved regions (tumor area) in (i) H&E, (ii) hEGFr, (iii) TUNEL and (iv) TRAP immunohistology slides. hEGFr identified tumor cells, TUNEL identified apoptotic tumor cells, and TRAP identified tumor-associated osteoclasts where the number of cells were quantified per tumor area. Scale bar represents 500nm.