

Table S1. Preparation parameters of P(VCL-co-SBMA) hydrogels

Hydrogel Sample	Monomer Molar Ratio		Cross-linker	Solvent	
	VCL(%)	SBMA(%)	MBAA(%)	DMSO (ml)	H ₂ O (ml)
PVCL	100	0	8	5	1
P(VCL-co-SBMA) ₁	88.9	11.1	8	4	2
P(VCL-co-SBMA) ₂	66.9	33.1	8	2.5	3.5
P(VCL-co-SBMA) ₃	46.2	53.8	8	1.5	4.5
PSBMA	0	100	8	0	6

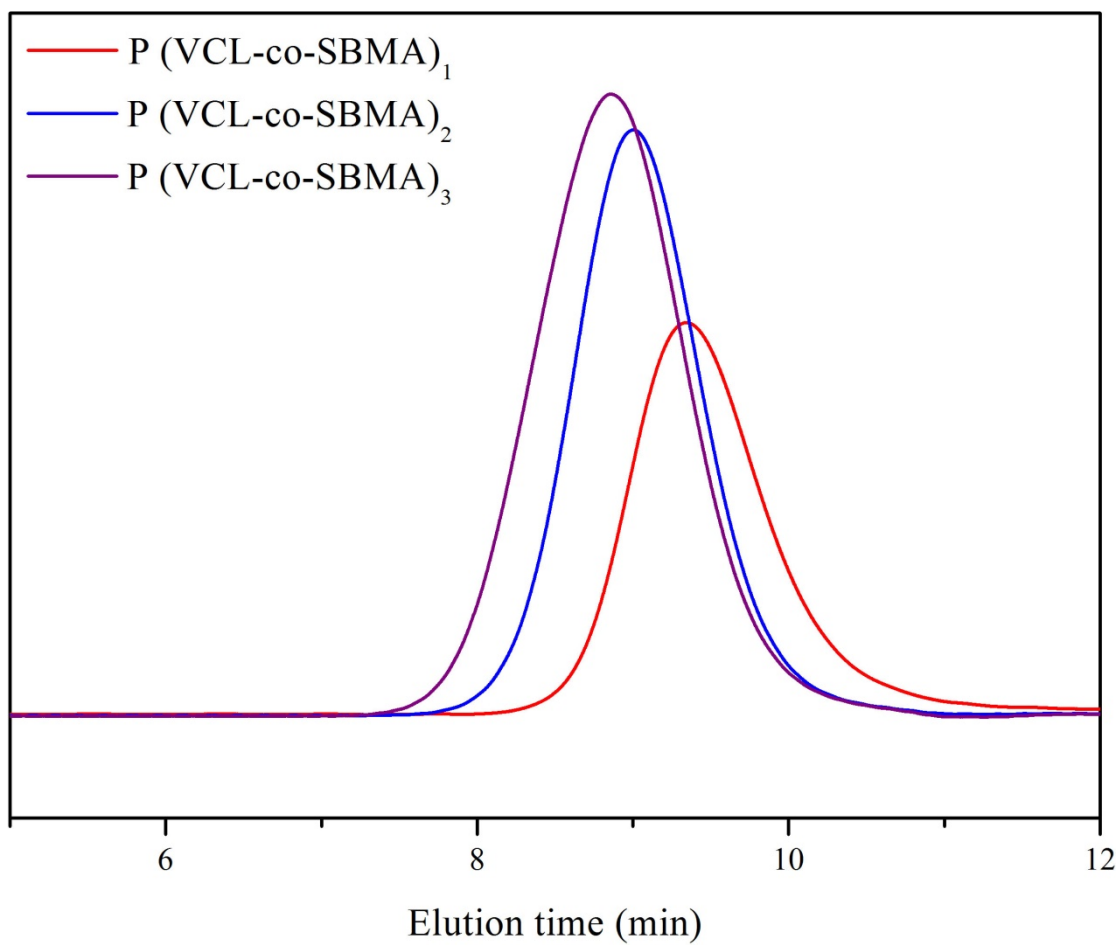


Figure S1. GPC traces of P(VCL-co-SBMA) copolymers.

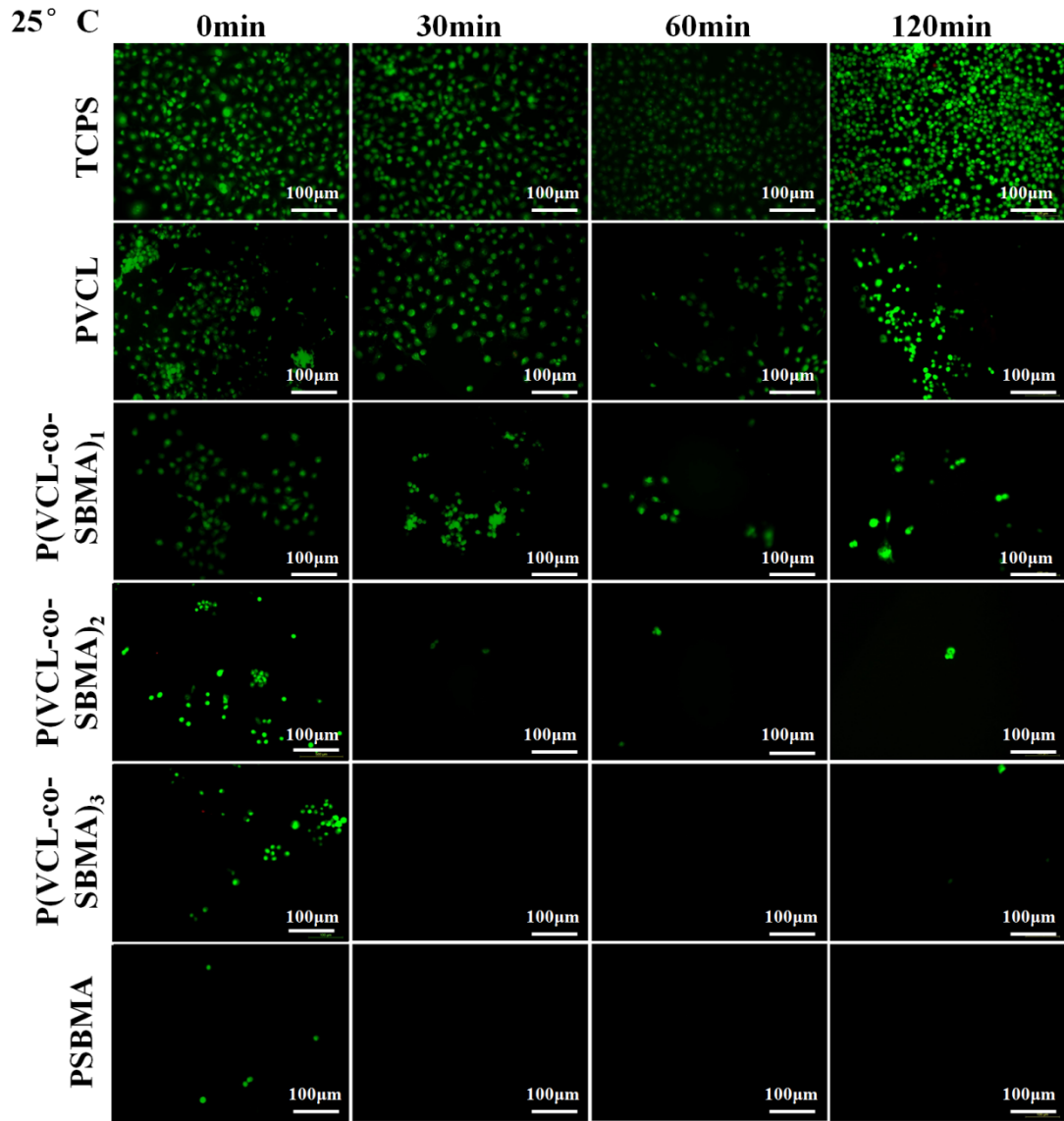


Figure S2. Fluorescence microscopic images of HUVECs cell detachment from the surfaces of TCPS, PVCL hydrogel, P(VCL-co-SBMA) hydrogels, and PSBMA hydrogel at 25°C for 0, 30, 60, and 120 min.