

Supplementary Information

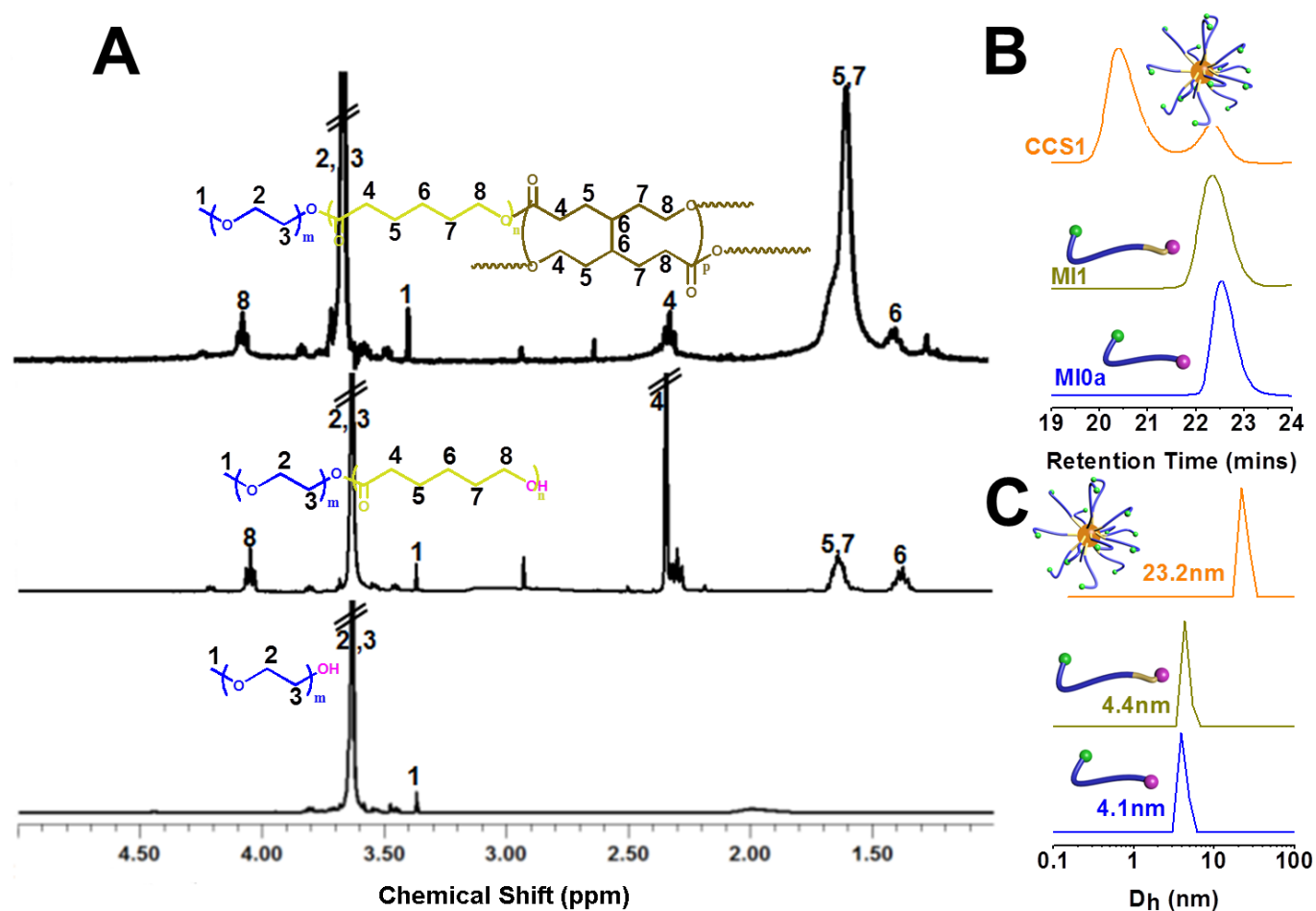


Fig. S1 Characterizations of a typical PEG-PCL-BOD CCS polymer (MeO-PEG_{5k}-PCL_{1k}-BOD, CCS1; [MI]=5 mM, [MSA]/[MI] =3, [BOD]/[MI]=15), the MI (MeO-PEG_{5k}-PCL_{1k}; MI1) and initiator (MeO-PEG_{5k}-OH) involved in the preparation: **(A)** ¹H NMR spectrum (in CDCl₃) **(B)** THF GPC differential refractive index (DRI) chromatograms **(C)** DLS mass distribution in THF

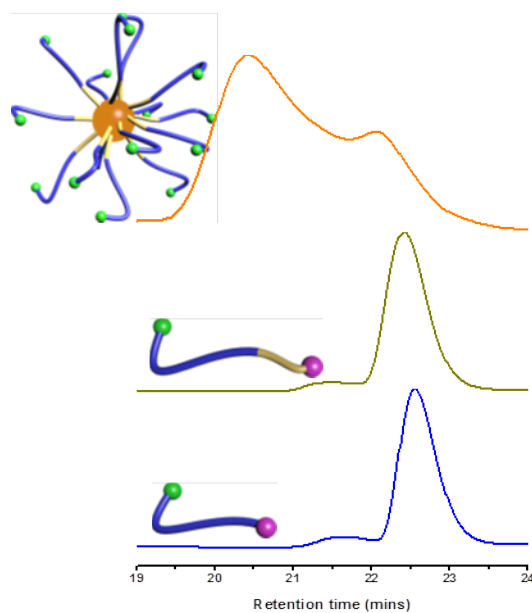


Fig. S2 THF GPC differential refractive index (DRI) chromatograms of a functionalized CCS polymer (MAL-PEG_{5k}-PCL_{3k}-BOD), the MI (MAL-PEG_{5k}-PCL_{3k}) and initiator (MAL-PEG_{5k}-OH) involved during the preparation

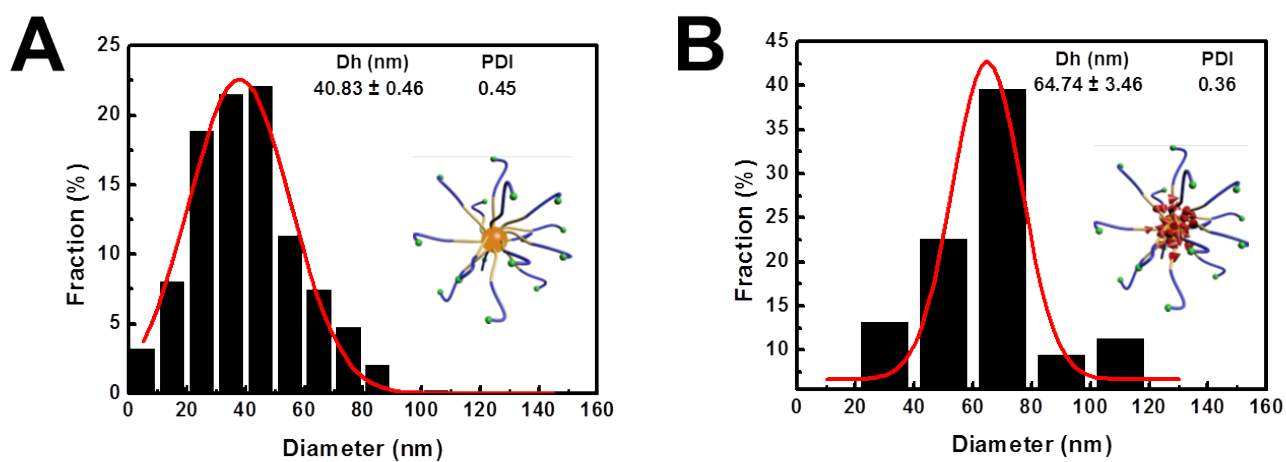


Fig. S3 Particle size distribution of (A) CCS4 and (B) pirarubicin-loaded CCS4 measured by TEM

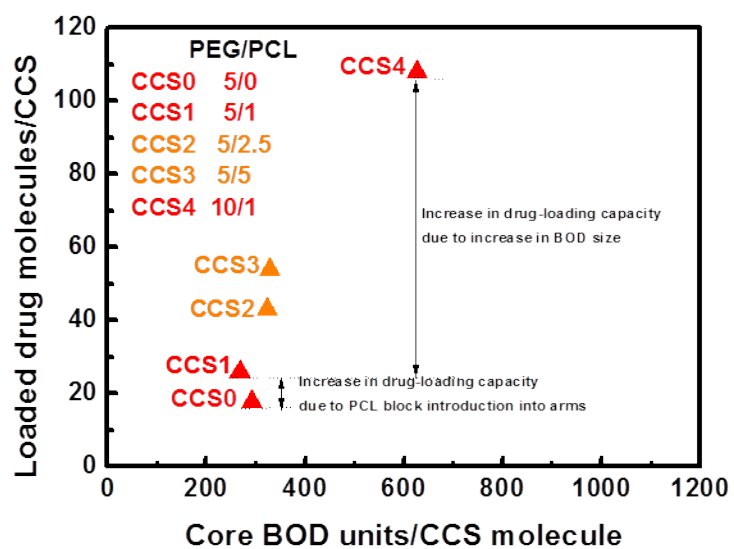


Fig. S4 Pirarubicin loading capacity of MeO-PEG-PCL-BOD CCS polymers with change in BOD units