

SUPPORTING INFORMATION

for

Well-defined High Refractive Index Poly(monothiocarbonate) with Tunable Abbe's numbers and Glass-transition Temperatures via Terpolymerization

Ming Luo, Xing-Hong Zhang*, Bin-Yang Du, Qi Wang, Zhi-Qiang Fan

MOE Key Laboratory of Macromolecular Synthesis and Functionalization, Department of Polymer Science and Engineering, Zhejiang University, Hangzhou 310027, People's Republic of China

E-mail: xhzhang@zju.edu.cn

Figures:

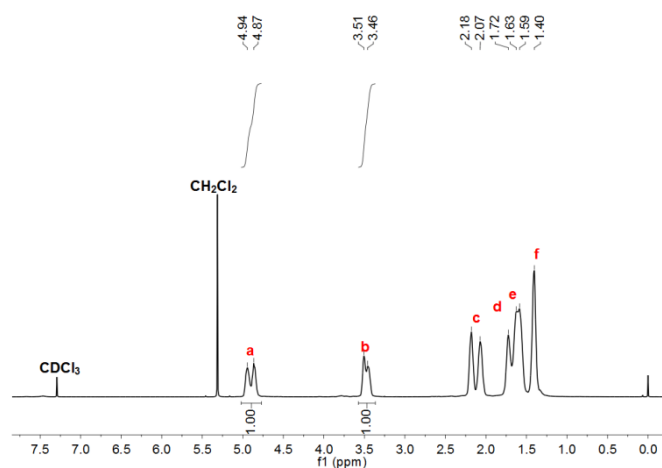


Figure S1. The ^1H NMR spectrum of the crude product of entry 6 in Table 1.

DSC and TGA results of PCHMTC

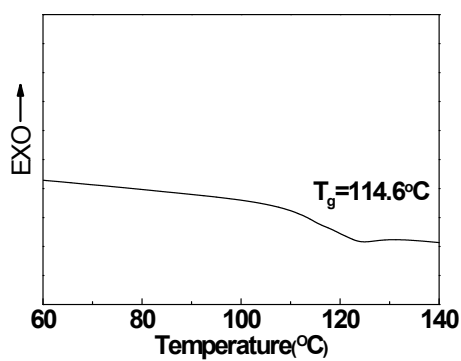


Figure S2. DSC curve for the copolymer of entry 3 in Table 1.

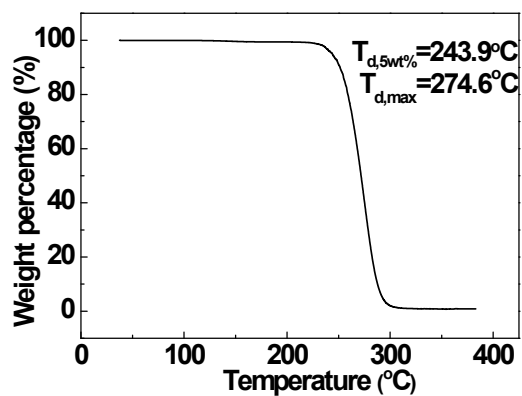


Figure S3. TGA curve for the copolymer of entry 3 in Table 1.

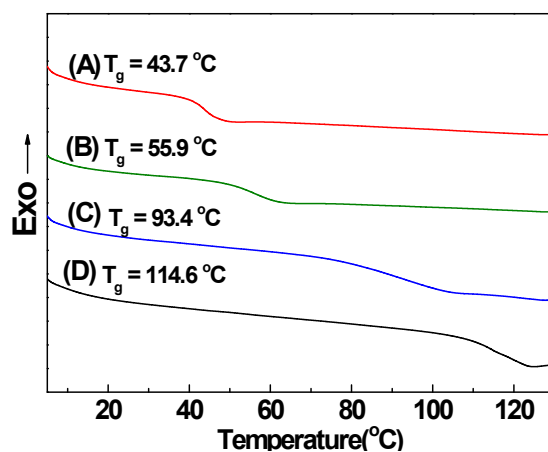


Figure S4. DSC thermograms of the COS/CHO/PO terpolymer containing (A) 27.5 mol % (B) 50 mol % (C) 83.1 mol% and (D) 99 mol% CHMTC linkages, respectively.

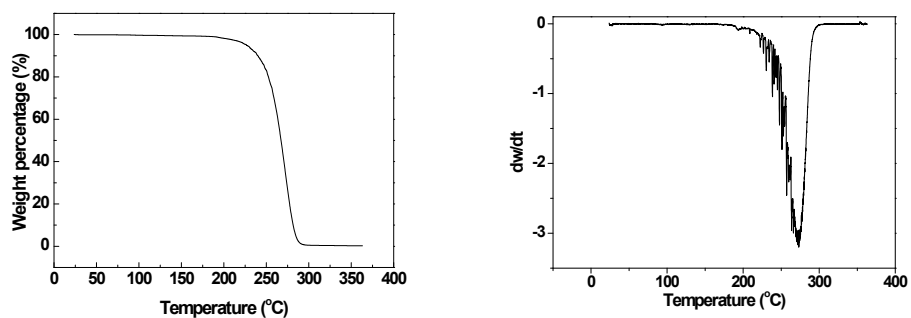


Figure S5. TGA curve for the copolymer of entry 2 in Table 2.

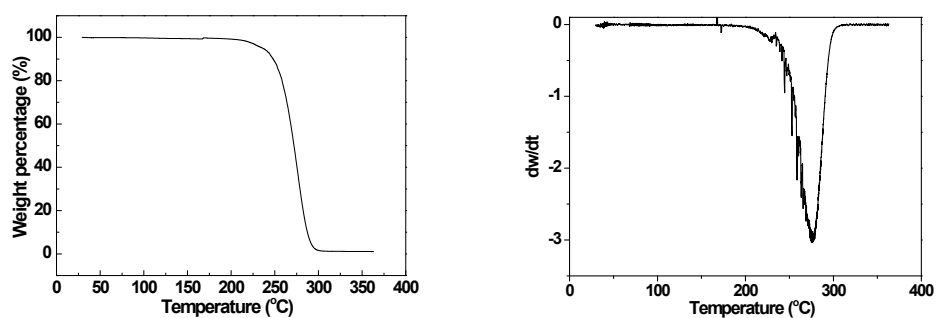


Figure S6. TGA curve for the copolymer of entry 3 in Table 2.

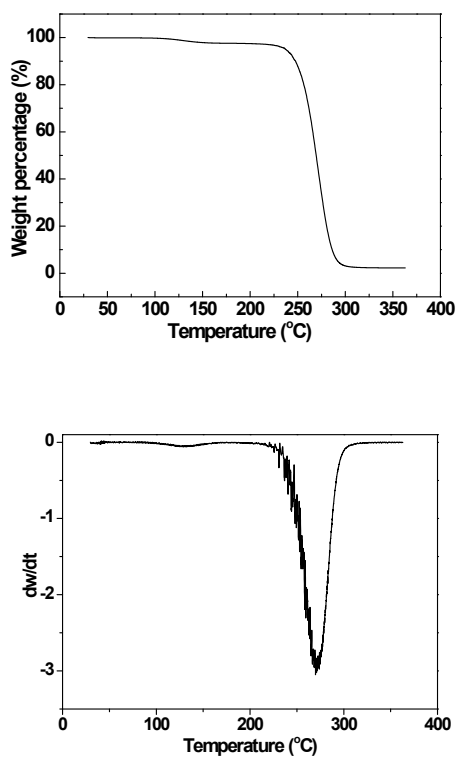


Figure S7. TGA curve for the copolymer of entry 4 in Table 2.