

Electronic Supplementary Information

Rod-Coil Type Miktoarm Star Copolymers Consisting of Polyfluorene and Polylactide: Precise Synthesis and Structure-Morphology Relationship[‡]

Kengo Saito,[†] Takuya Isono,[†] Han-Sheng Sun,[¶] Toyoji Kakuchi,[†] Wen-Chang Chen,^{¶,*} Toshifumi

Satoh^{†,*}

[†]Graduate School of Chemical Sciences and Engineering and Division of Applied Chemistry, Faculty
of Engineering, Hokkaido University, Sapporo 060-8628, Japan

[¶]Department of Chemical Engineering, National Taiwan University, Taipei 10617, Taiwan

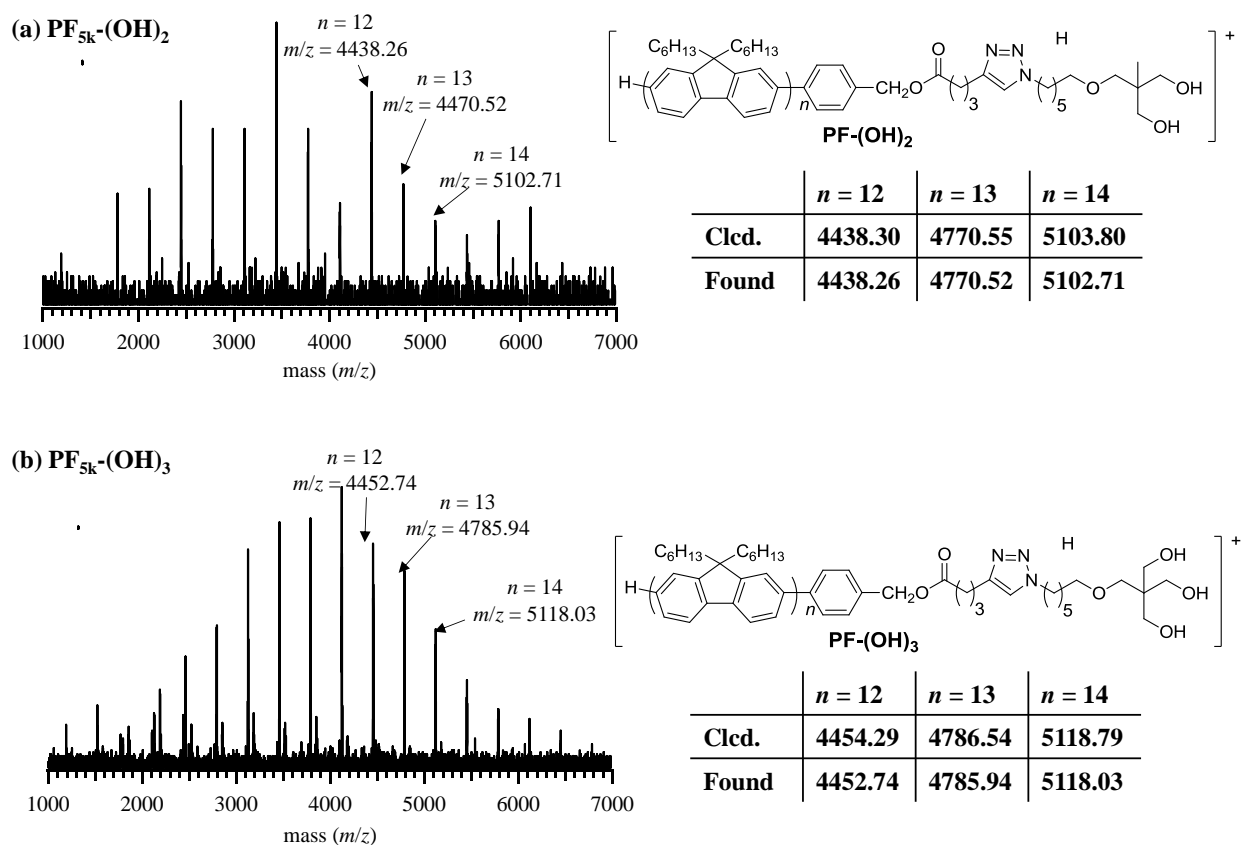


Figure S1. MALDI-TOF MS spectral analysis of (a) PF_{5k}-(OH)₂ ($M_{n,NMR} = 5500 \text{ g mol}^{-1}$, $D = 1.22$), and (b) PF_{5k}-(OH)₃ ($M_{n,NMR} = 5500 \text{ g mol}^{-1}$, $D = 1.21$).

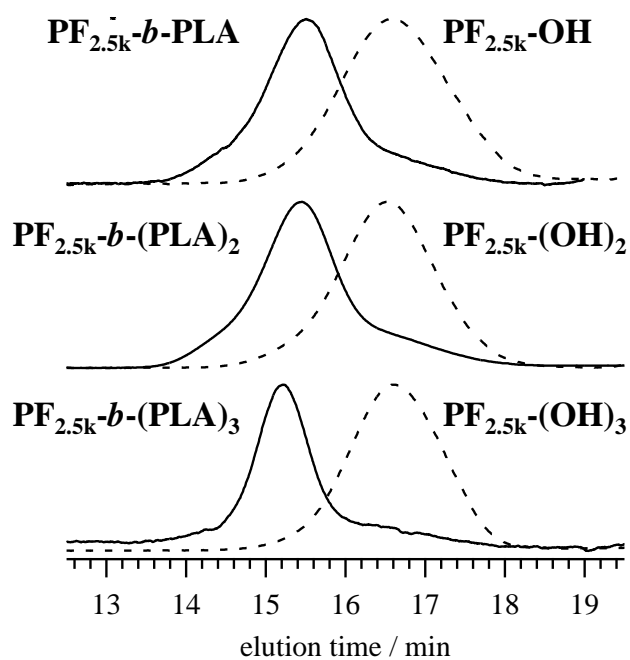


Figure S2. SEC traces of $\text{PF}_{2.5\text{k}}\text{-}b\text{-}(\text{PLA})_x\text{S}$ ($x = 1, 2,$ and 3 ; solid curves) and the corresponding macroinitiators, $\text{PF}_{2.5\text{k}}\text{-}(\text{OH})_x\text{S}$ ($x = 1, 2,$ and 3 ; broken curves).

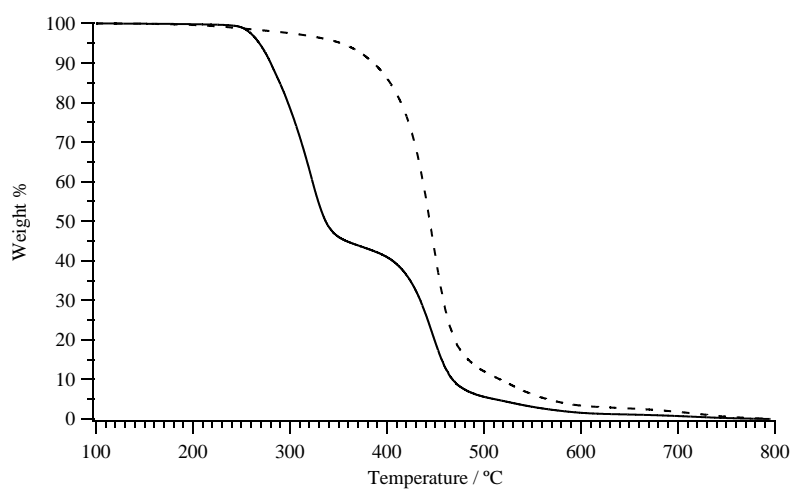


Figure S3. TGA profiles of $\text{PF}_{5\text{k}}\text{-}b\text{-PLA}$ (solid line) and $\text{PF}_{5\text{k}}\text{-OH}$ (broken line).

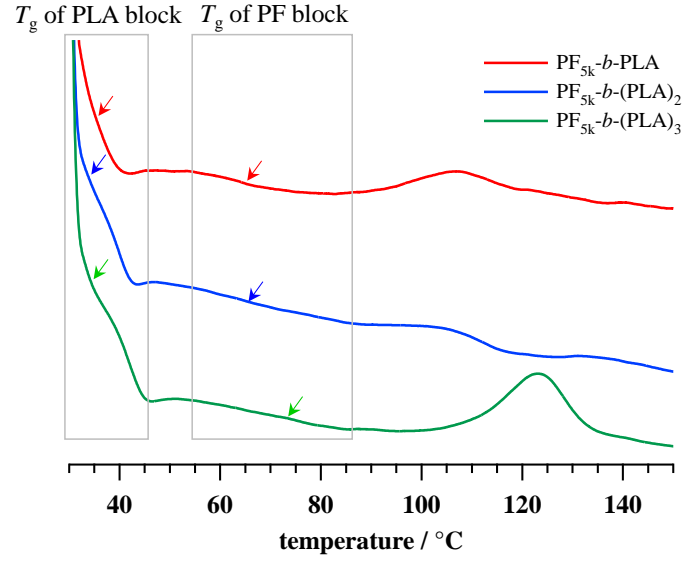


Figure S4. Typical DSC profiles during second heating of $PF_{5k}-b-PLA$, $PF_{5k}-b-(PLA)_2$, and $PF_{5k}-b-(PLA)_3$.

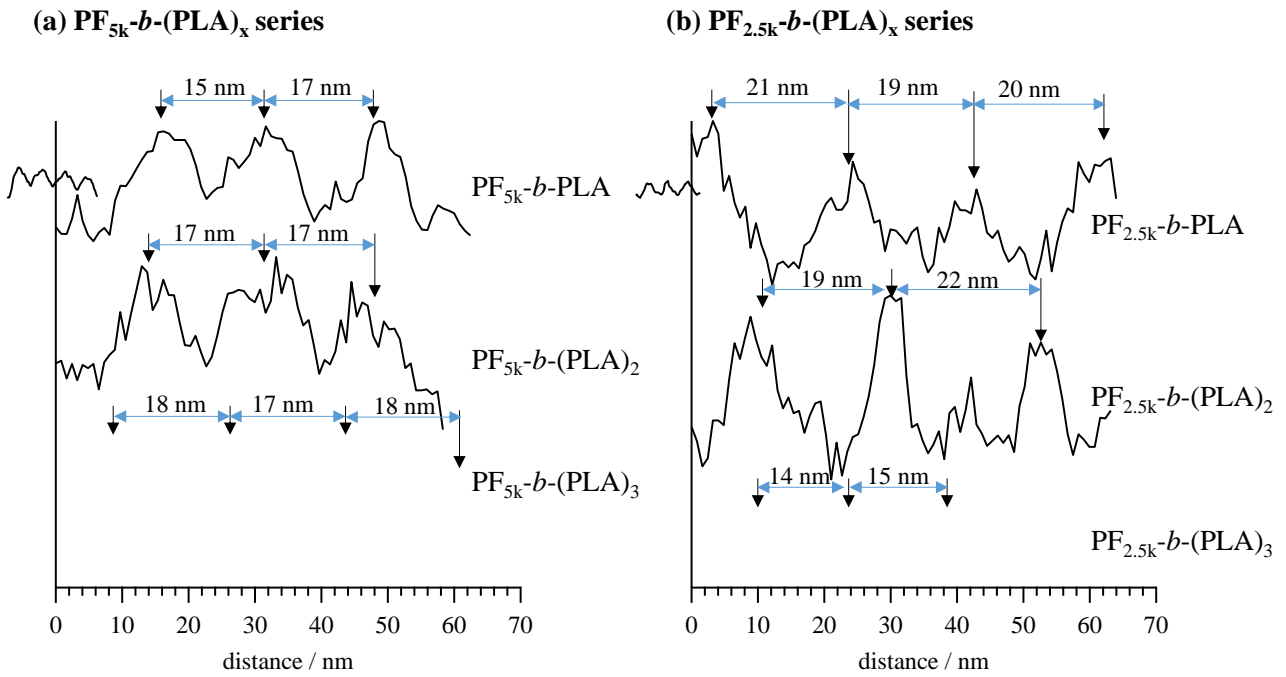


Figure S5. Typical contrast profiles for the TEM images of $PF-b-(PLA)_x$ samples.