

Electronic Supporting Information (ESI)

Remarkable crystal phase effect of Cu/TiO₂ catalysts on the selective hydrogenation of dimethyl oxalate

Bin Wang, Chao Wen, Yuanyuan Cui, Xi Chen, Yu Dong and Wei-Lin Dai

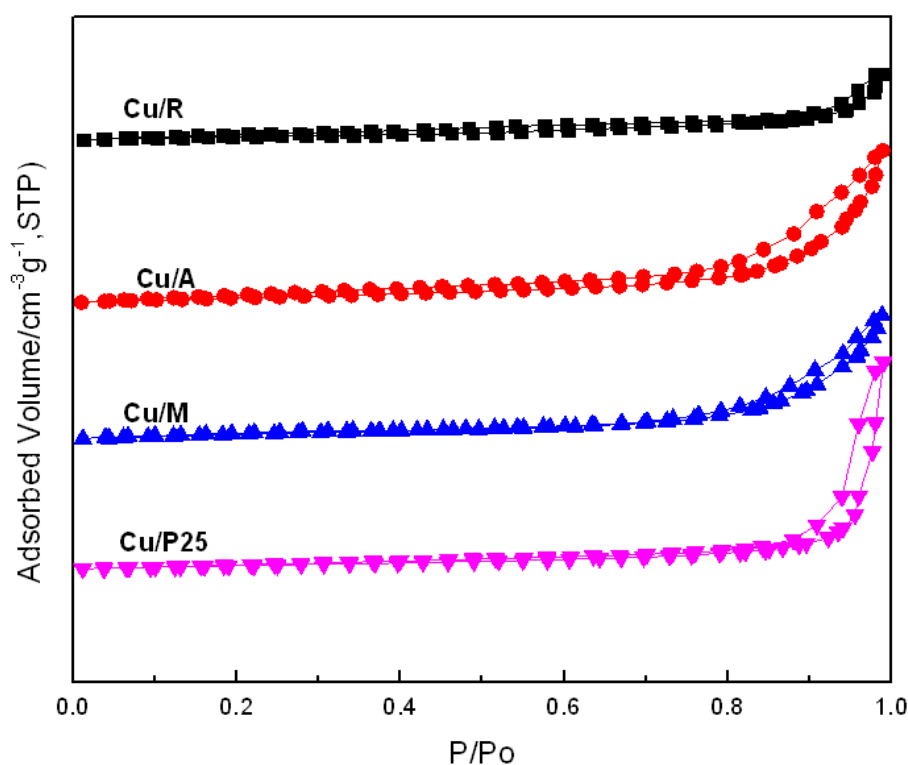


Fig. S1 N₂ adsorption isotherms of the calcined catalysts with different morphology of titania supports.

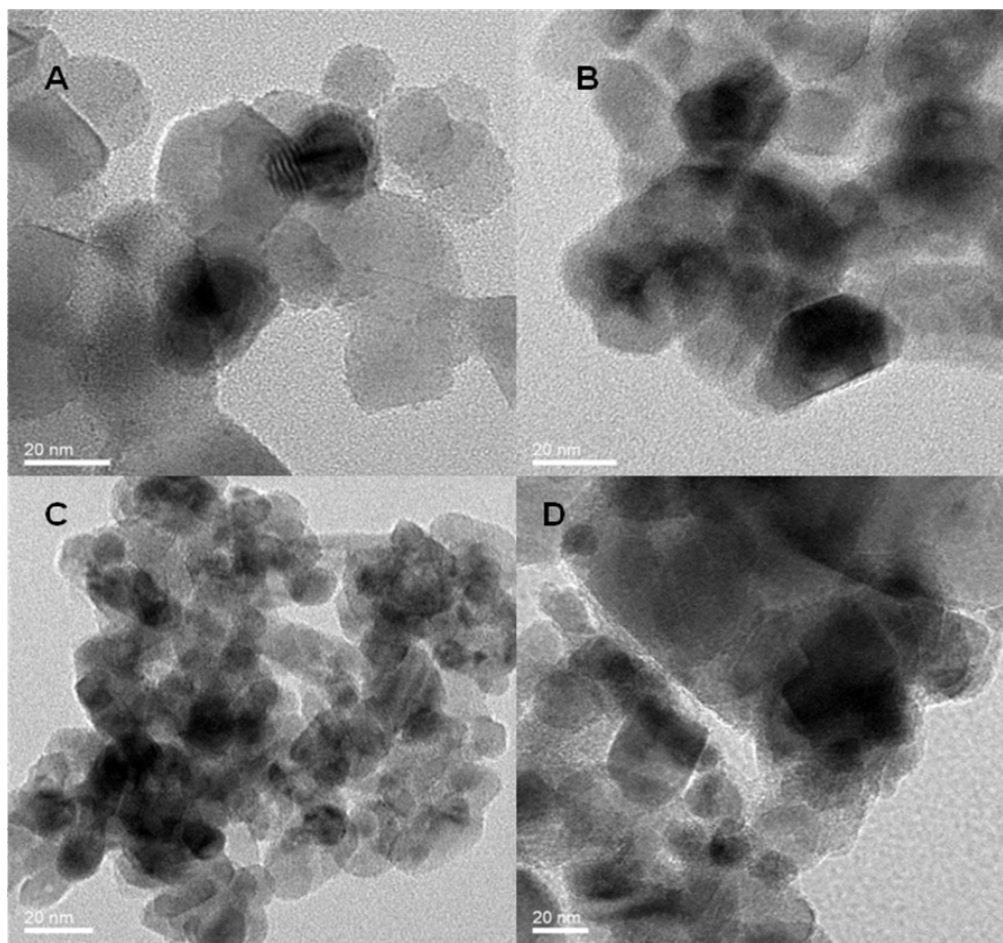


Fig. S2 TEM images for the reduced catalysts (A) Cu/P25; (B) Cu/M; (C) Cu/A; (D) Cu/R, all samples were pre-treated in H_2 in 573 K for 4 h.

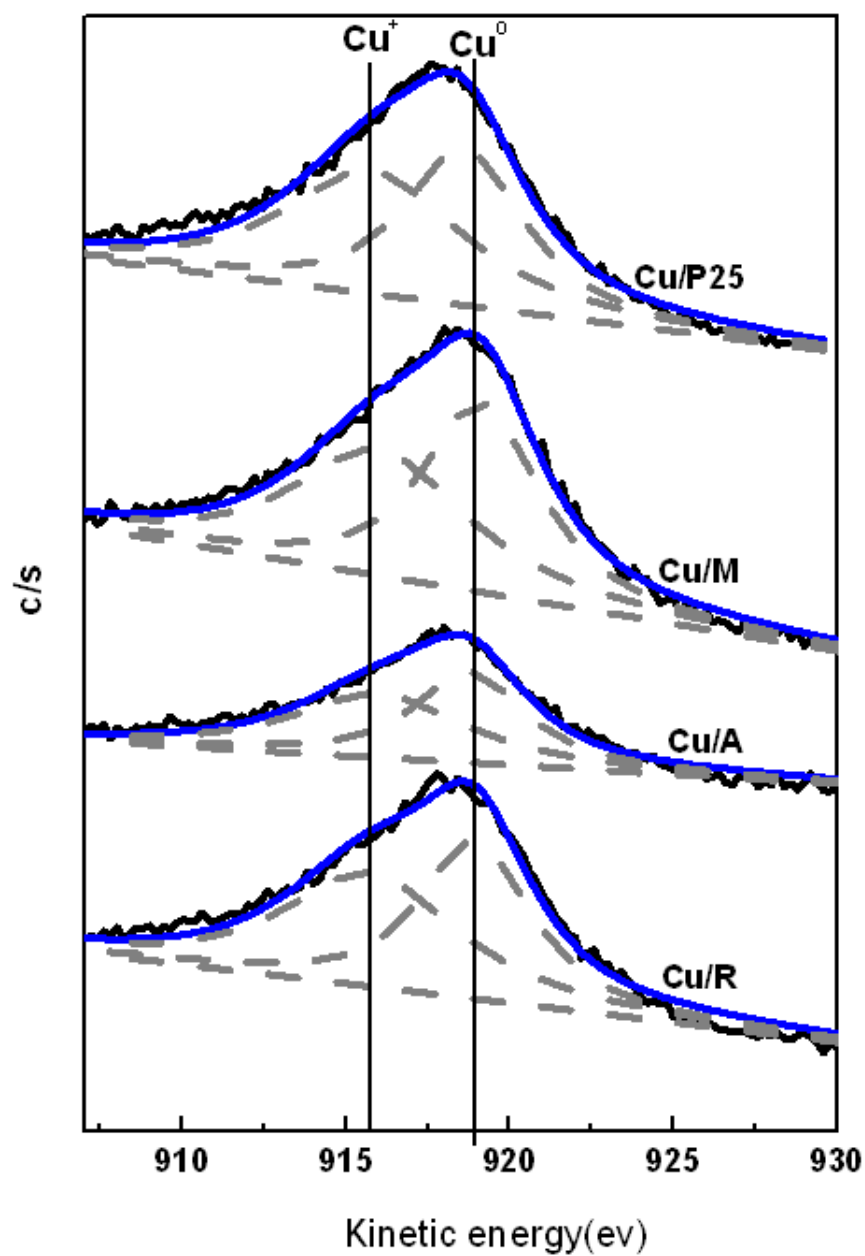


Fig. S3 Cu LMM X-ray induced Auger spectra (XAES) of Cu/TiO₂ catalysts.

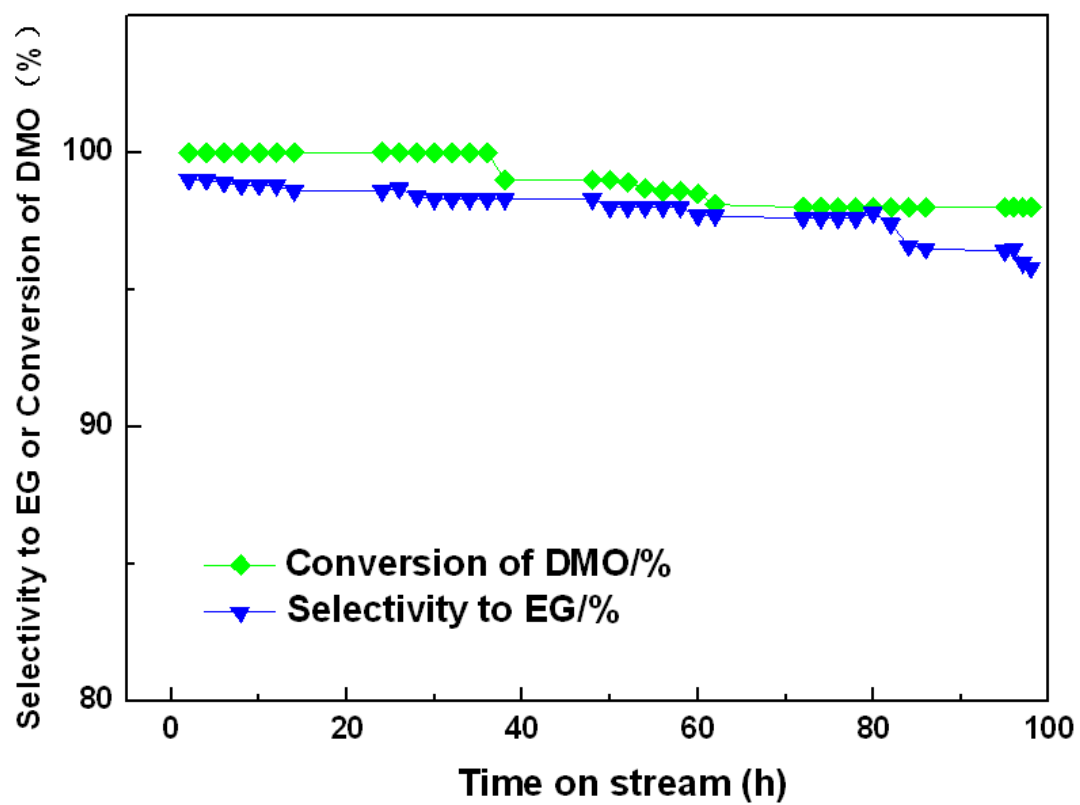


Fig. S4 Stability test of Cu/P25, Reaction condition: $P = 2.5$ MPa, $T = 493$ K, $H_2/DMO = 100$ (mol/mol), $LHSV = 0.3$ h⁻¹.