

Supplementary data

Determination of benzoylurea insecticides in environmental water and honey samples using ionic-liquid-mingled air-assisted liquid–liquid microextraction based on solidification of floating organic droplets

Miyi Yang, Xuefei Xi, Xiaoling Yang, Lizhen Bai, Runhua Lu, Wenfeng Zhou, Sanbing Zhang, Haixiang Gao*

Department of Applied Chemistry, China Agricultural University, Yuanmingyuan West Road 2#, Haidian District, Beijing 100193, China



Fig S1. Devices used for ILAALLME-SFOD

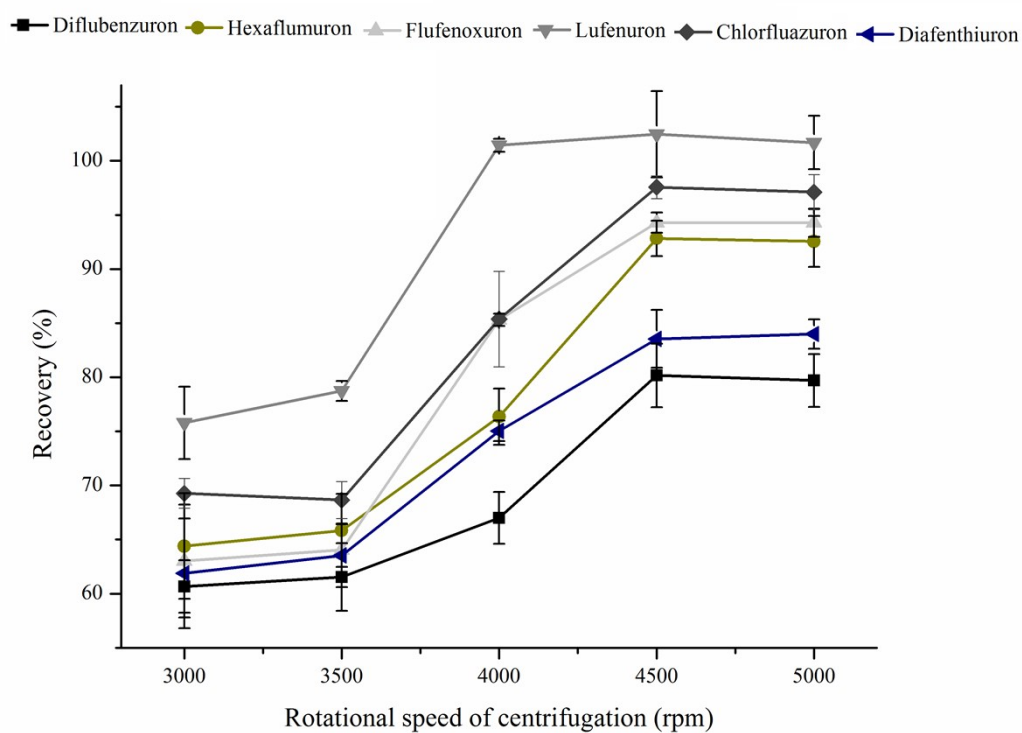


Fig S2. Effect of centrifugation speed on extraction efficiency. Extraction conditions: analyte concentration, $50 \mu\text{g L}^{-1}$; 1-dodecanol volume, $30 \mu\text{L}$; IL volume, $10 \mu\text{L}$; extraction temperature, 45°C ; number of extraction cycles, 10; centrifugation time, 15 min; no salt. The error bars correspond to the relative standard deviation of the mean recovery for $n = 3$ replicates.

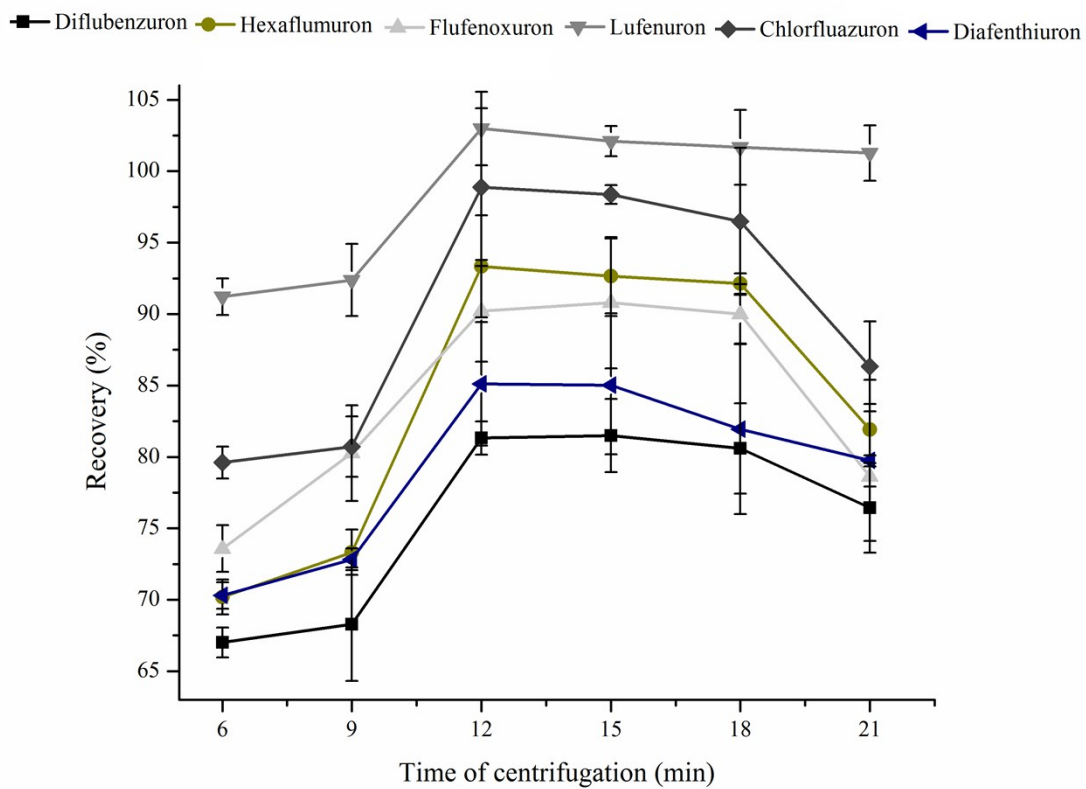


Fig S3. Effect of centrifugation time on extraction efficiency. Extraction conditions: analyte concentration, $50 \mu\text{g L}^{-1}$; 1-dodecanol volume, $30 \mu\text{L}$; IL volume, $10 \mu\text{L}$; extraction temperature, 45°C ; number of extraction cycles, 10; centrifugation speed, 4500 rpm; no salt. The error bars correspond to the relative standard deviation of the mean recovery for $n = 3$ replicates.

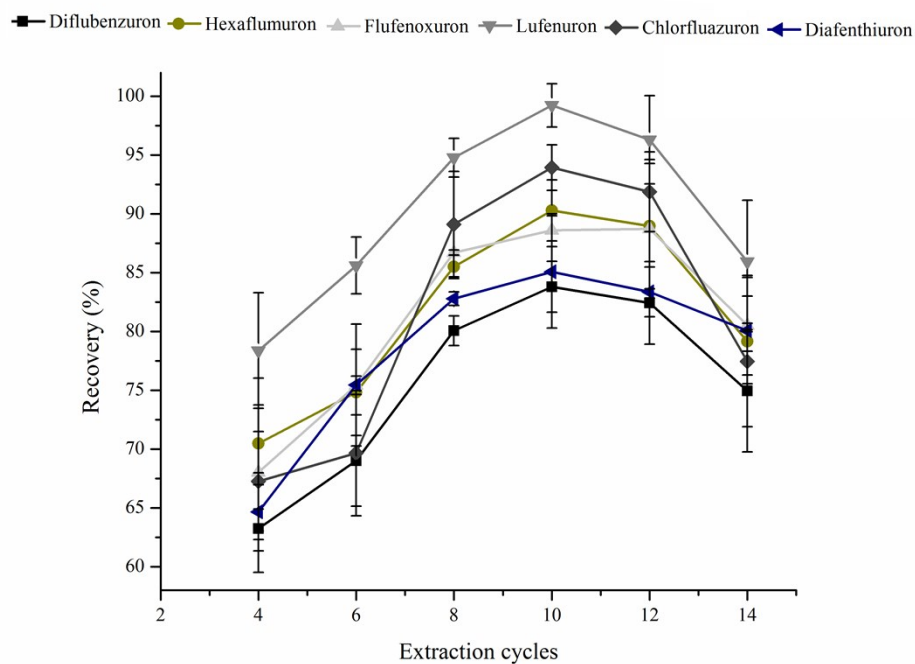


Fig S4. Effect of the number of extraction cycles on the extraction efficiency.

Extraction conditions: analyte concentration, $50 \mu\text{g L}^{-1}$; 1-dodecanol volume, $30 \mu\text{L}$; IL volume, $10 \mu\text{L}$; extraction temperature, 45°C ; centrifugation time, 12 min; centrifugation speed, 4500 rpm. The error bars correspond to the relative standard deviation of the mean recovery for $n = 3$ replicates.