

## Supporting information

### Multichannel Detection of Cu<sup>2+</sup> based on a Rhodamine-Ethynylferrocene Conjugate

XingWen Cheng,<sup>a</sup> Yi Zhou,<sup>\*a</sup> Yuan Fang,<sup>a</sup> QingQing Rui<sup>a</sup> and Cheng Yao<sup>\*ab</sup>

<sup>a</sup> College of Science, Nanjing Tech University, Nanjing 211816, P. R. China

<sup>b</sup> State Key Laboratory of Coordination Chemistry, Nanjing University, Jiangsu 210093, China E-mail: zhouyi624@126.com and yaocheng@njtech.edu.cn; Tel: +86-25-5813-9482; Fax: +86-25-5813-9482

† Electronic supplementary information (ESI) available.

#### Table of Contents

**Figure S1.** <sup>1</sup>H-NMR spectrum of **DR3**.

**Figure S2.** <sup>13</sup>C-NMR spectrum of **DR3**.

**Figure S3.** Mass spectrum of **DR3**.

**Figure S4.** <sup>1</sup>H-NMR spectrum of **DR2**.

**Figure S5.** <sup>13</sup>C-NMR spectrum of **DR2**.

**Figure S6.** Mass spectrum of **DR2**.

**Figure S7.** ESI-MS of **DR3-Cu<sup>2+</sup>**

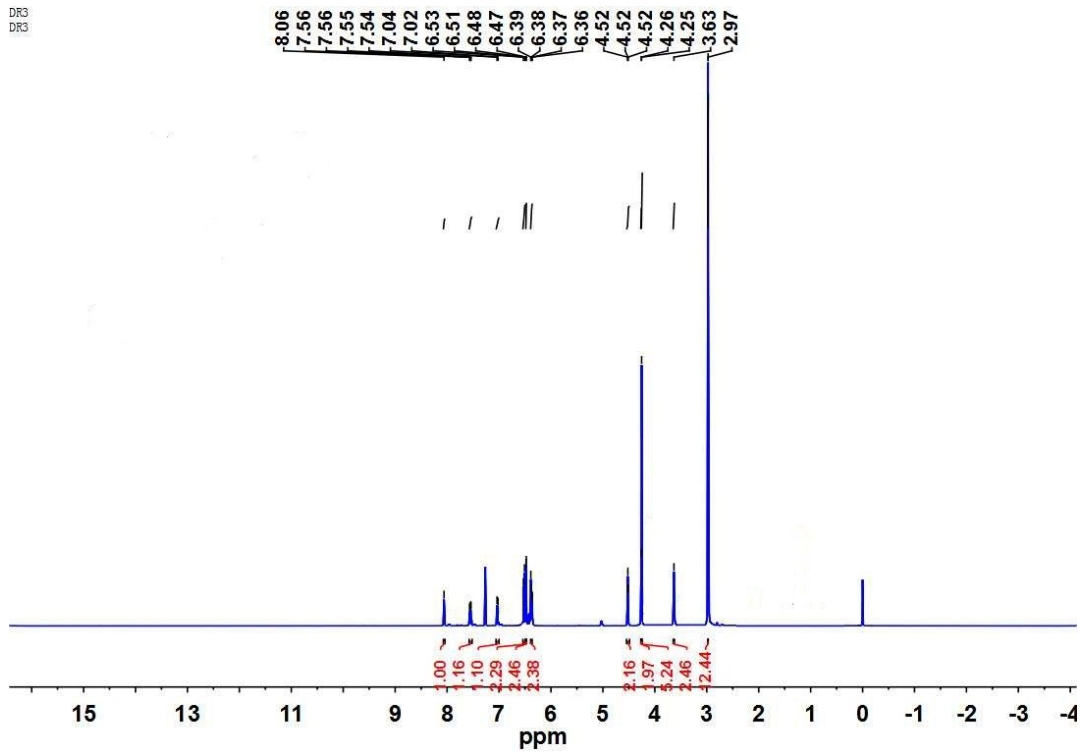


Figure S1 <sup>1</sup>H NMR of DR3

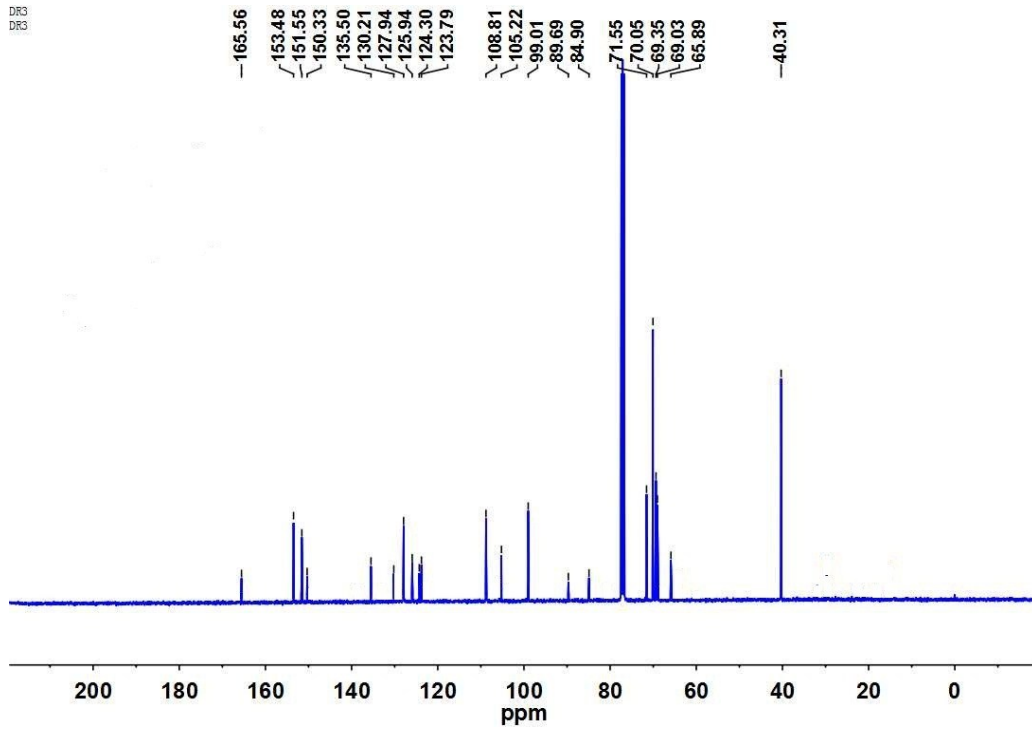


Figure S2 <sup>13</sup>C NMR of DR3

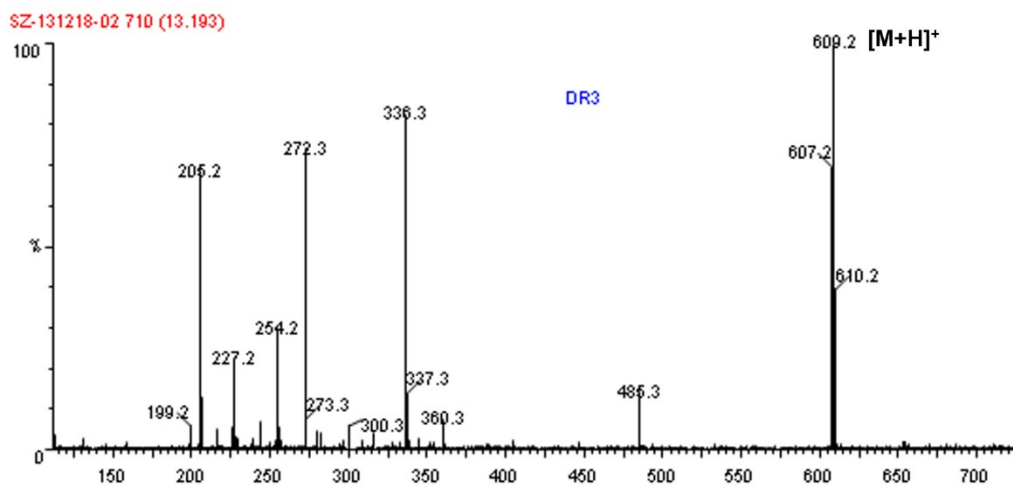


Figure S3 ESI-MS of DR3

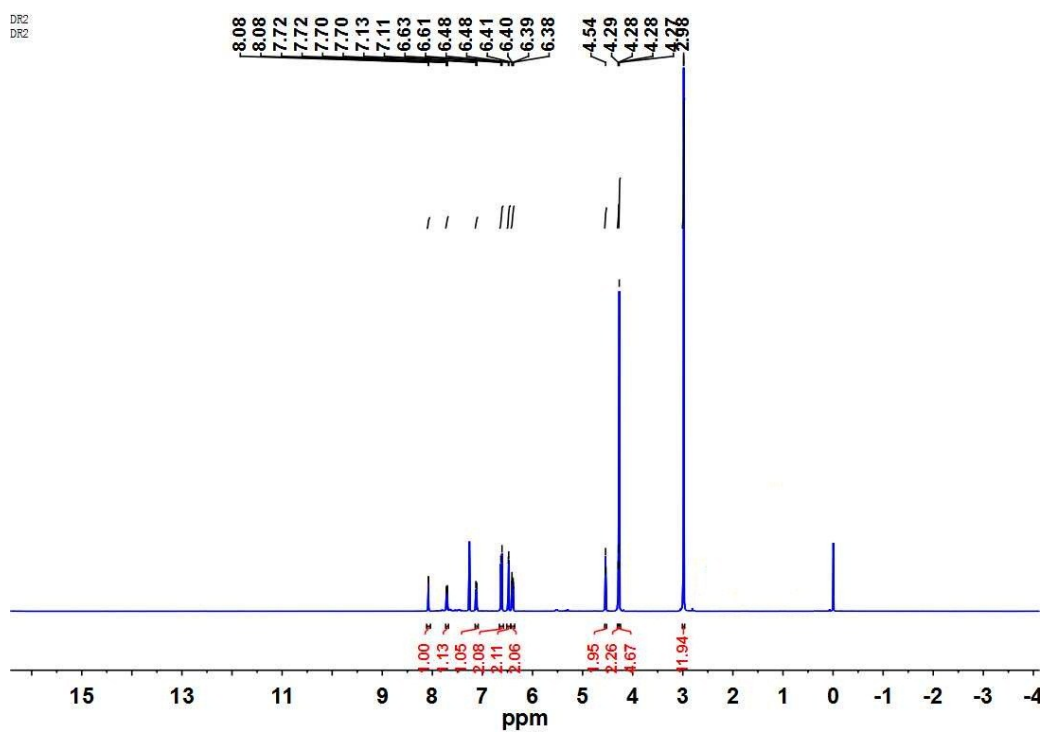


Figure S4 <sup>1</sup>H NMR of DR2

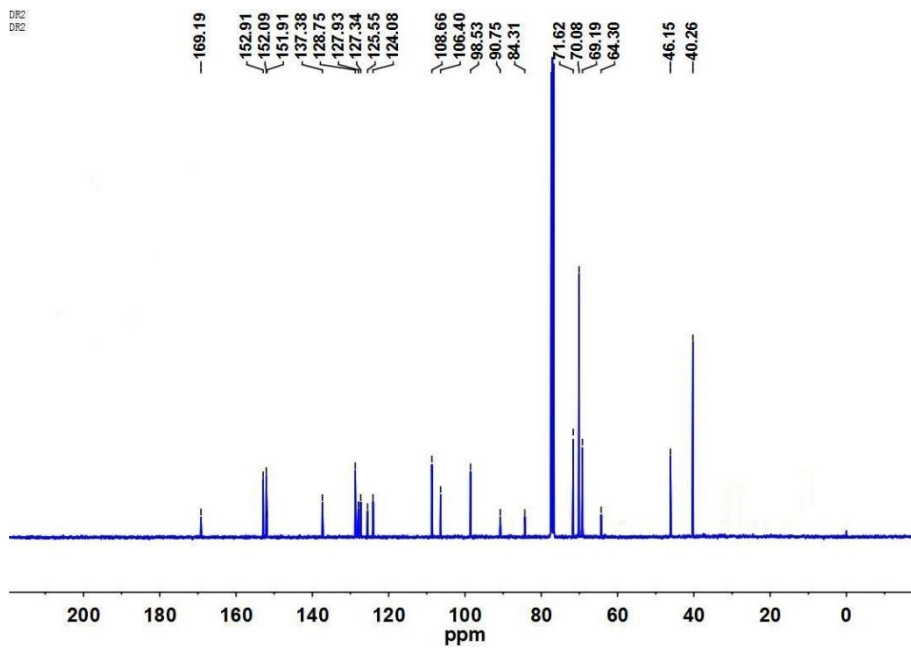


Figure S5  $^{13}\text{C}$  NMR of DR2

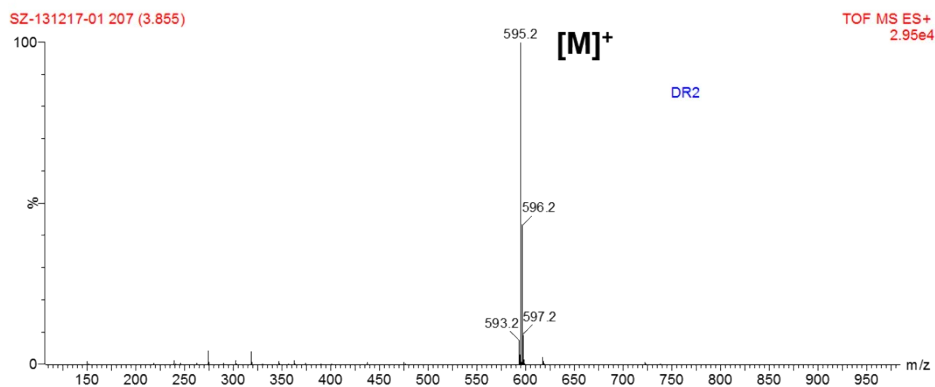


Figure S6 ESI-MS of DR2

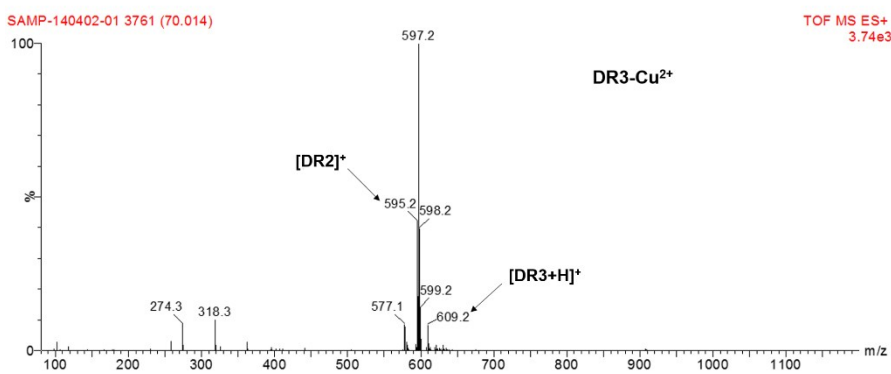


Figure S7 ESI-MS of DR3-Cu<sup>2+</sup>