

Supplementary Fig. 1 Phase contrast and Annexin staining of Neuro-2A cells

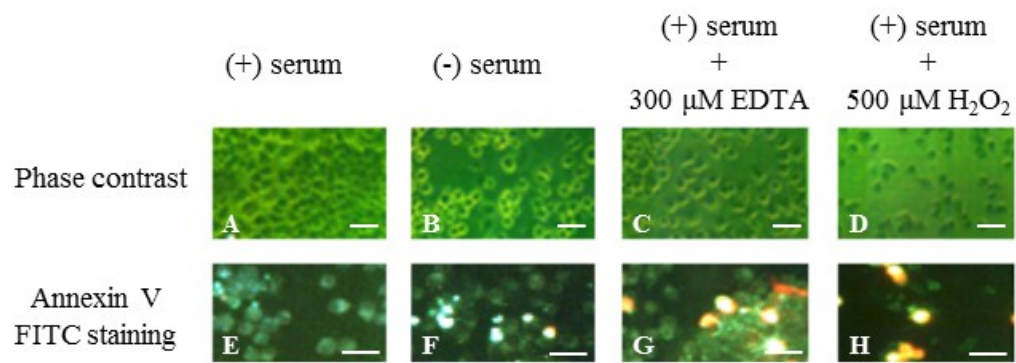
A – D, phase contrast images; E – H, images were obtained after Annexin V fluorescein isothiocyanate (FITC) staining 24 h after induction of cell death. Green cells stained by Annexin show early apoptosis, red cells stained by propidium iodide show necrosis and late stages of apoptosis. Scale bar = 50 μm

Supplementary Fig. 2 Time-dependent effect of plasmalogens (PLs) on cell viability in the absence of serum

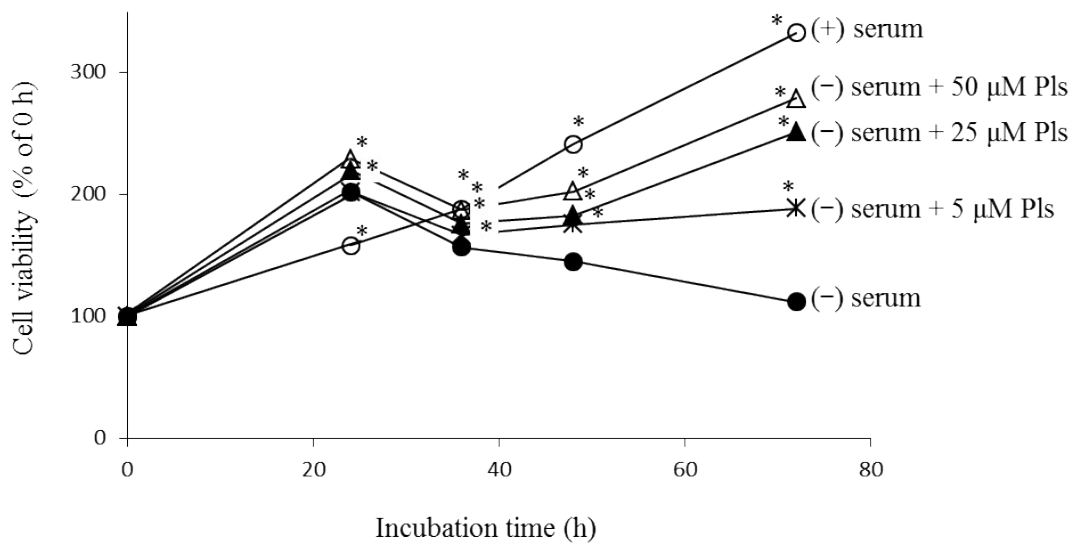
Viable number of cells were estimated using the water-soluble tetrazolium salt assay. The value obtained in control cells in the presence of fetal bovine serum (FBS) at 0 h was set to 100%. Values represent means \pm SE, $n = 4$. Asterisks on bars indicate significant differences between this group and the cells in the absence of FBS ($*P < 0.01$).

Supplementary Fig. 3 Effect of phospholipid classes on DNA fragmentation

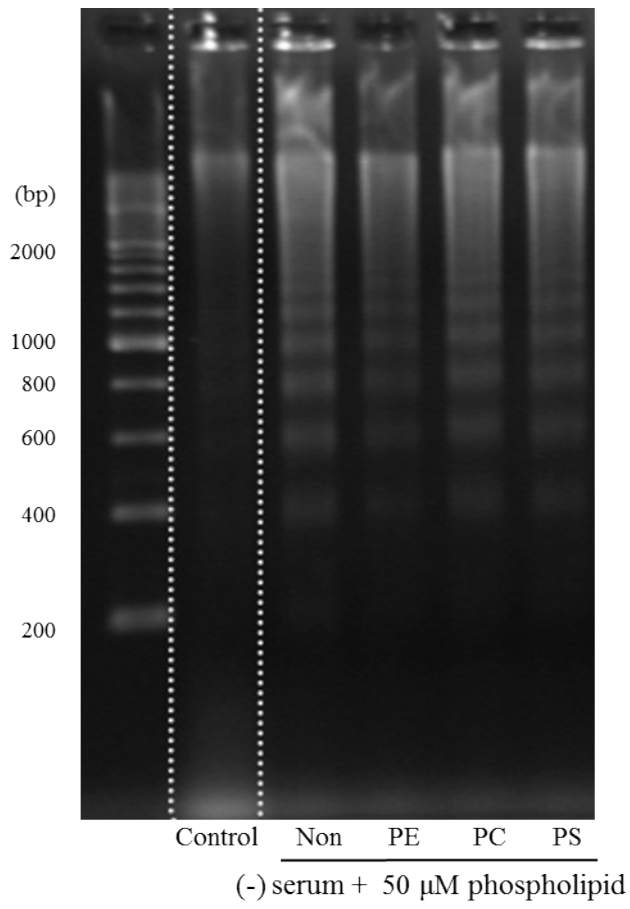
Neuro-2A cells were cultured for 36 h using 50 μM phospholipids in the absence of fetal bovine serum. Total DNA was extracted after cell lysis and was analyzed by agarose gel electrophoresis. PE, ethanolamine glycerophospholipid; PC, choline glycerophospholipid; PS, serine glycerophospholipid.



Supplementary Fig. 1



Supplementary Fig. 2



Supplementary Fig. 3