

Electronic Supplementary Information (ESI) For

## **Hemi-salen Aluminum Catalysts Bearing N, N, O-Tridentate Type Binaphthyl-Schiff-base Ligands for the Living Ring-Opening Polymerisation of Lactide**

Bo Gao<sup>ab</sup>, Xiang Li<sup>a</sup>, Ranlong Duan<sup>a</sup>, Qian Duan<sup>b</sup>, Yanhui Li<sup>b</sup>, Xuan Pang<sup>\*a</sup>, Hejing Zhuang<sup>c</sup> and Xuesi Chen<sup>a</sup>

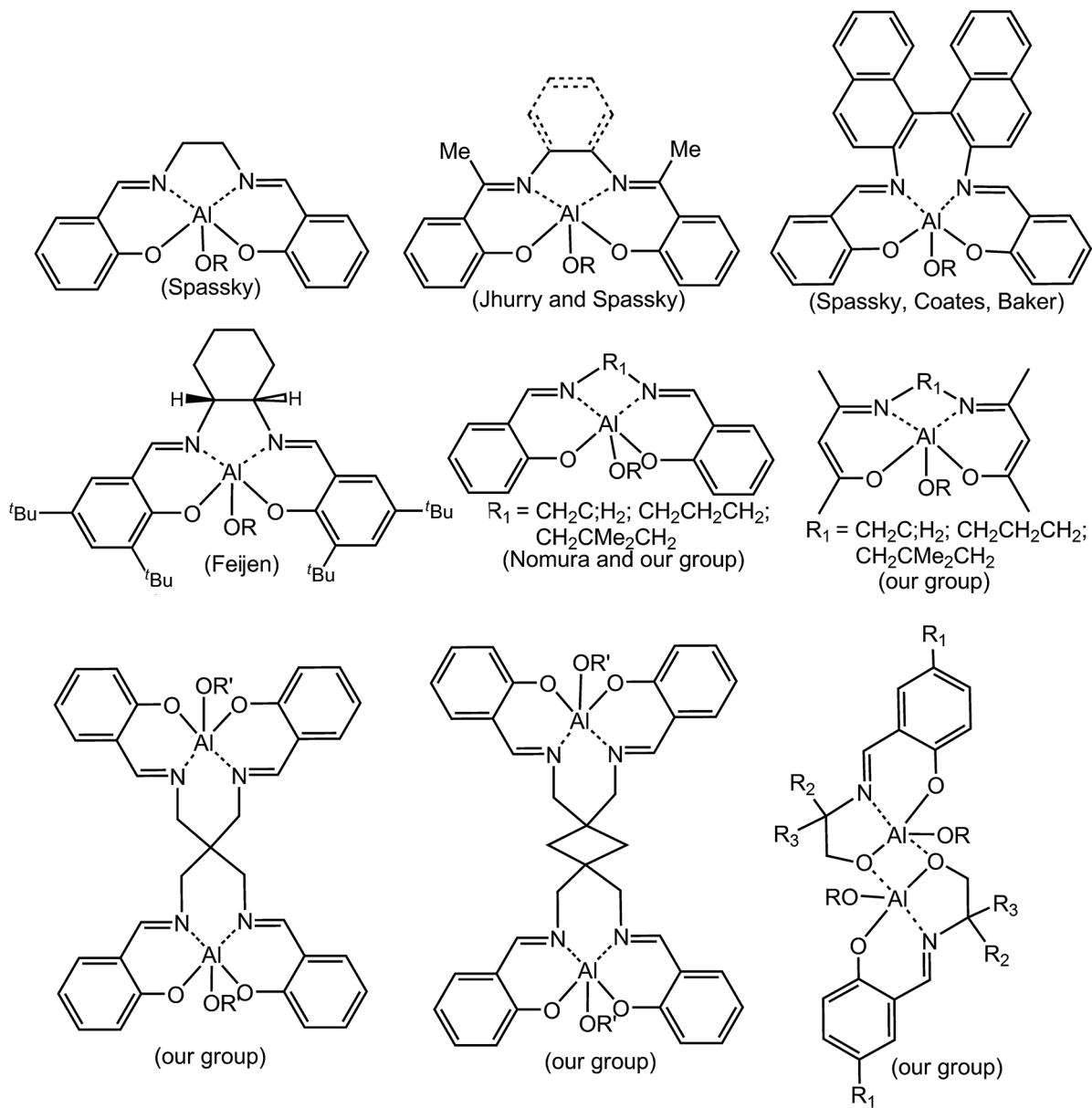
a. Key Laboratory of Polymer Ecomaterials, Changchun Institute of Applied Chemistry Chinese Academy of Sciences, Changchun 130022, China. Tel & Fax: +86-431-85262116. E-mail: xpang@ciac.ac.cn.

b. School of Materials Science and Engineering, Changchun University of Science and Technology, Changchun 130022, China.

c. Department of Organic Chemistry, College of Chemistry, Jilin University, 2699 Qianjin Street, Changchun 130012, China.

### **Content**

<b>Figure S1</b> .....	<b>P2</b>
<b>Figure S2</b> .....	<b>P3</b>
<b>Figure S3</b> . . . . .	<b>P4</b>
<b>Figure S4</b> . . . . .	<b>P5</b>
<b>Figure S5</b> . . . . .	<b>P6</b>



**Figure S1.** Aluminum initiators for ROP of LA.

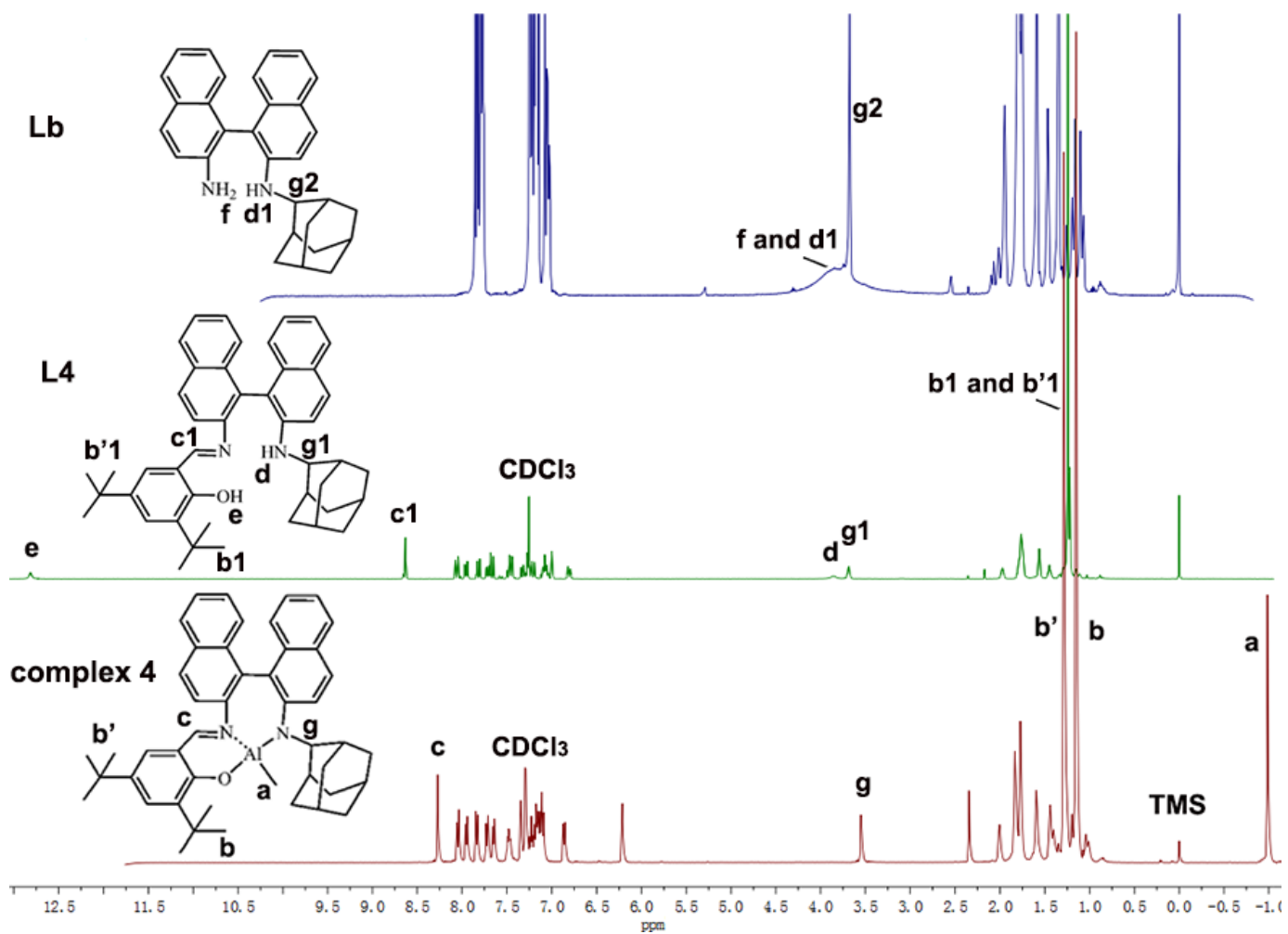


Figure S2.  $^1\text{H}$  NMR spectra of **Lb**, **L4** and complex **4**.

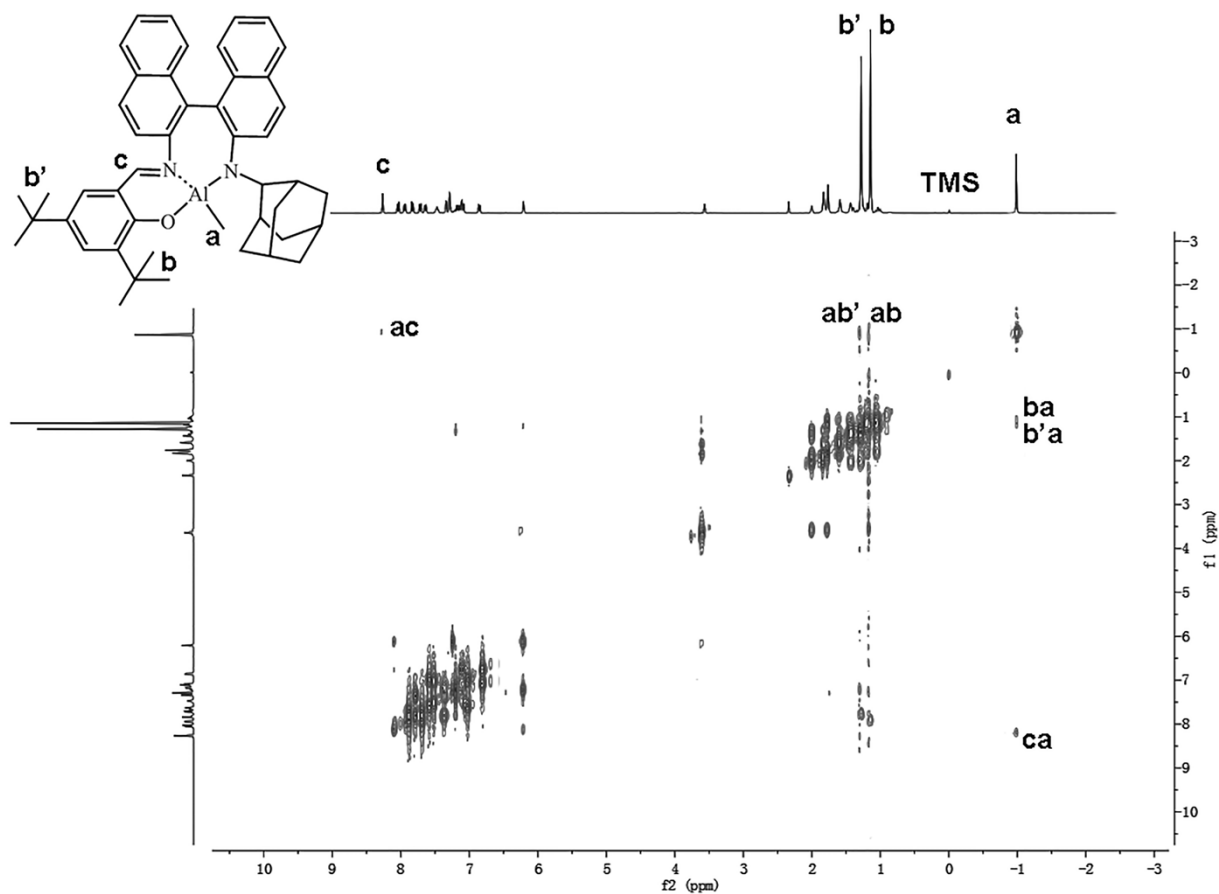


Figure S3.  $^1\text{H}$ - $^1\text{H}$  COSY spectrum of **4** in  $\text{CDCl}_3$ .

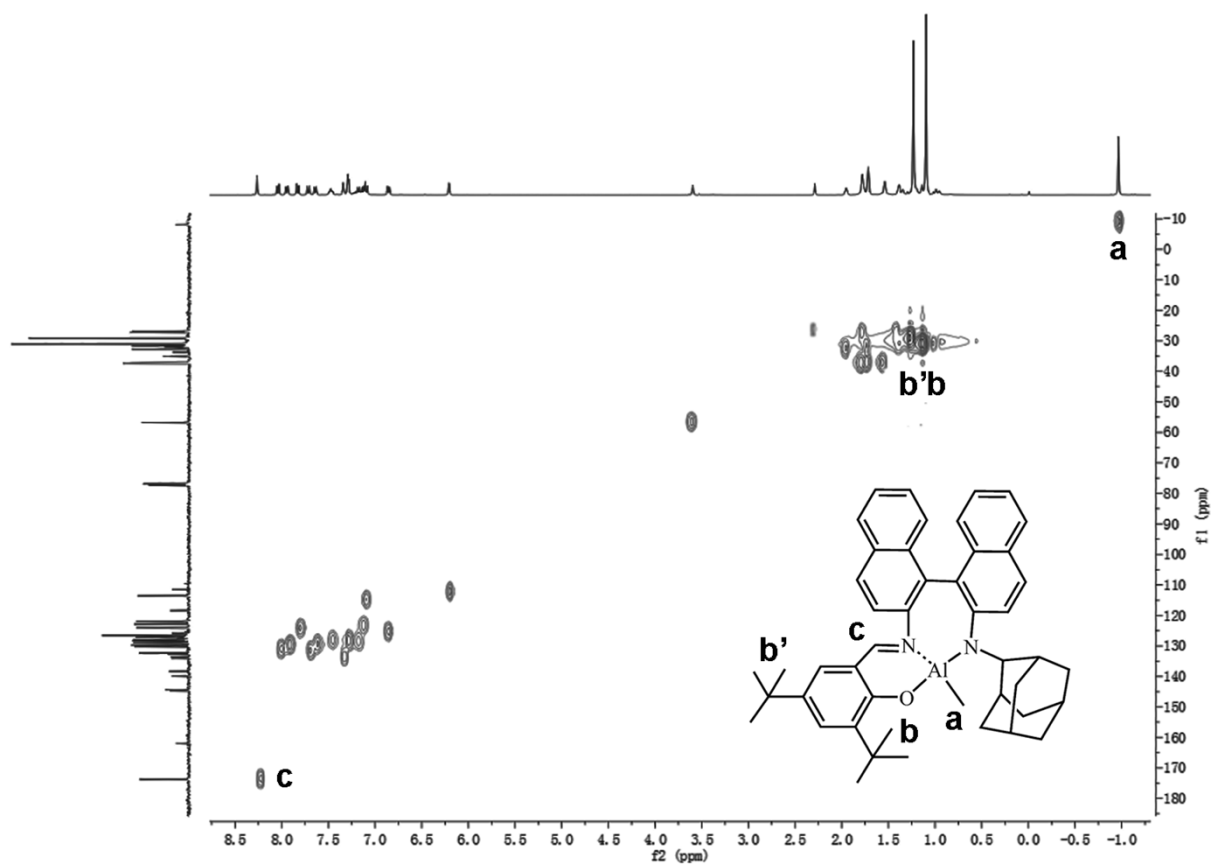
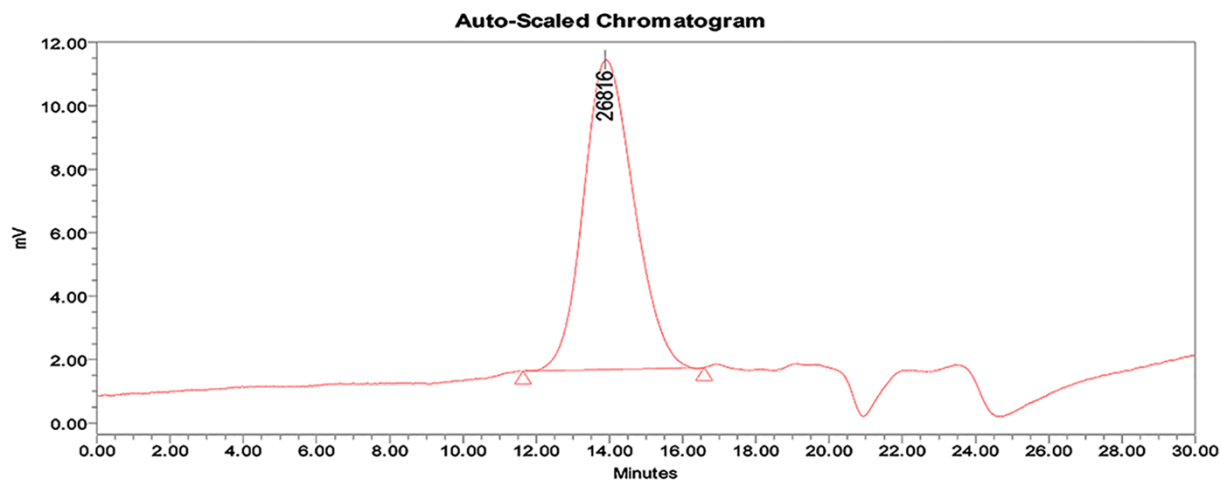
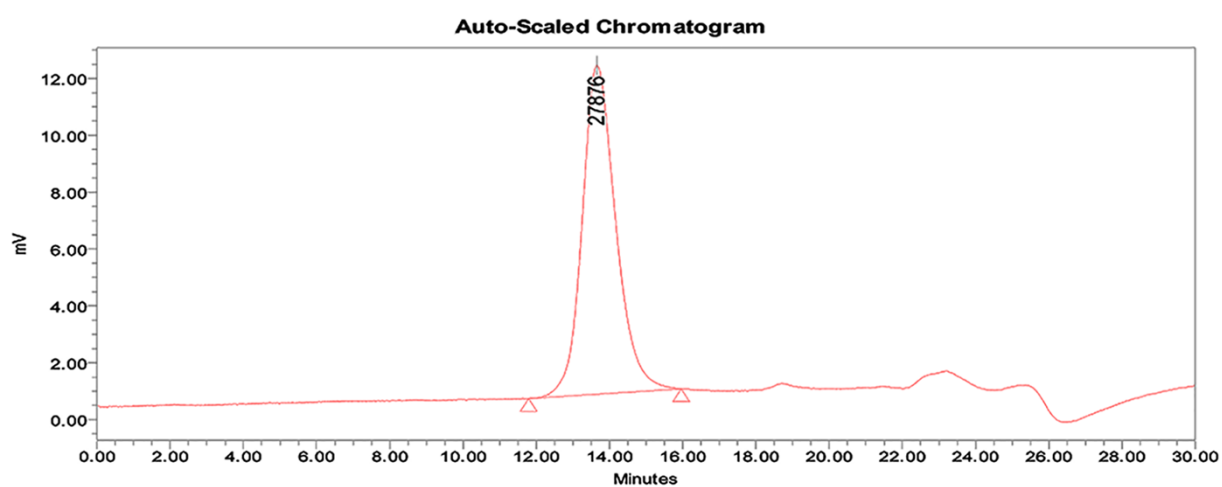


Figure S4.  $^{13}\text{C}$ - $^1\text{H}$  HMQC spectrum of **4** in  $\text{CDCl}_3$ .



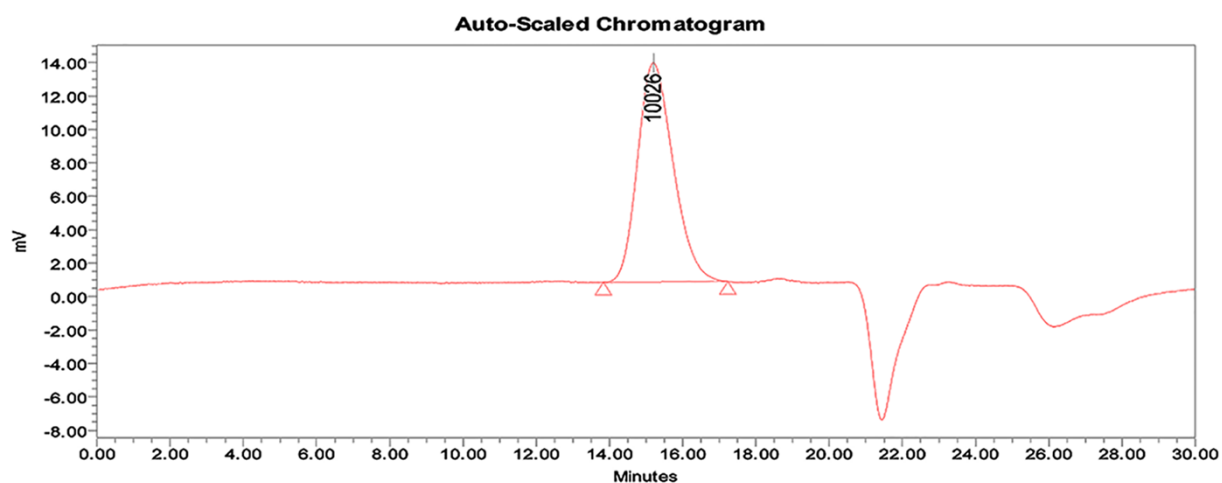
**GPC Results**

Dist Name	Mn	Mw	Mv	MP	Mz	Mz+1	Poly dispersity	K	alpha
1	23724	28973		26816	28232	29737	1.226128		



**GPC Results**

Dist Name	Mn	Mw	Mv	MP	Mz	Mz+1	Poly dispersity	K	alpha
1	24405	27301		27876	30201	33332	1.118662		



**GPC Results**

Dist Name	Mn	Mw	Mv	MP	Mz	Mz+1	Poly dispersity	K	alpha
1	8900	9692		10026	10744	11644	1.088764		

**Figure S5.** GPC traces for (top) PLA prepared from complex 1 (Table 1, Entry 1), (mid) PLA prepared from complex 3 (Table 1, Entry 4), and (bot) PLA prepared from complex 4 (Table 1, Entry 6).