

SUPPORTING INFORMATION

Plasmodium falciparum Subtilisin-like Protease 1: Discovery of Potent Difluorostatone-based Inhibitors

S. Giovani,^{a,b,c,†} M. Penzo,^{d,†} S. Butini,^{a,b,c} M. Brindisi,^{a,b,c} S. Gemma,^{a,b,c,*} E. Novellino,^{a,e} G. Campiani,^{a,b,c,*},
M. J. Blackman,^d S. Brogi^{a,b,c}

^a*European Research Centre for Drug Discovery and Development (NatSynDrug), University of Siena, via Aldo Moro 2, 53100, Siena, Italy.*

^b*Dept. Biotechnology, Chemistry, and Pharmacy, University of Siena, via Aldo Moro 2, 53100, Siena, Italy.*

^c*Centro Interuniversitario di Ricerche sulla Malaria (CIRM), University of Perugia, Perugia, Italy.*

^d*Division of Parasitology, MRC National Institute for Medical Research, Mill Hill, London, NW7 1AA, UK*

^e*Dip. di Farmacia, University of Naples Federico II, Via D. Montesano 49, 80131 Naples, Italy*

Table of Contents

Figure S1	S2
Figure S2	S2
Figure S3	S3
Figure S4	S3
Figure S5	S4
¹H NMR spectra	S5

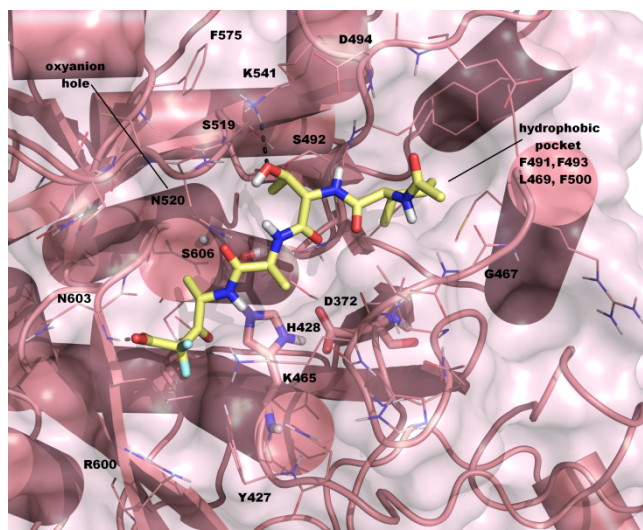


Figure S1. Docked pose of **3** (light yellow sticks) in the cavity of the PfSUB1 (PDB ID: 4LVN). H-bonds are indicated by black dotted lines. The catalytic triad is represented by salmon sticks while the other residues in the binding site were represented by lines. Molecular graphics were generated by PyMOL (The PyMOL Molecular Graphics System, v1.6-alpha; Schrodinger LLC: New York, 2013). Nonpolar hydrogens were omitted for clarity.

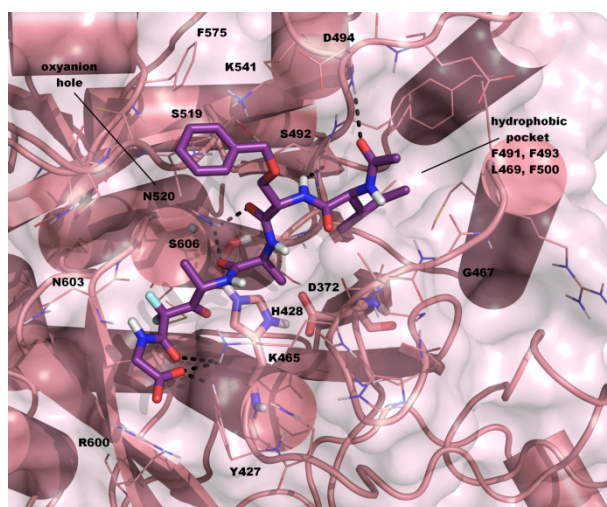


Figure S2. Docked pose of **9** (light yellow sticks) in the cavity of the PfSUB1 (PDB ID: 4LVN). H-bonds are indicated by black dotted lines. Catalytic triad is represented by salmon sticks while the other residues in the binding site were represented by lines. Molecular graphics were generated by PyMOL (The PyMOL Molecular Graphics System, v1.6-alpha; Schrodinger LLC: New York, 2013). Nonpolar hydrogens were omitted for clarity.

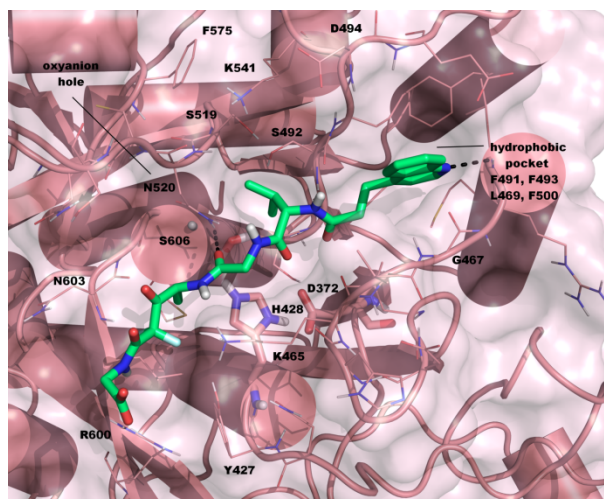


Figure S3. Docked pose of **17** (light green sticks) in its neutral state, in the cavity of the PfSUB1 (PDB ID: 4LVN). H-bonds are indicated by black dotted lines. Catalytic triad is represented by salmon sticks while the other residues in the binding site were represented by lines. Molecular graphics were generated by PyMOL (The PyMOL Molecular Graphics System, v1.6-alpha; Schrodinger LLC: New York, 2013). Nonpolar hydrogens were omitted for clarity.

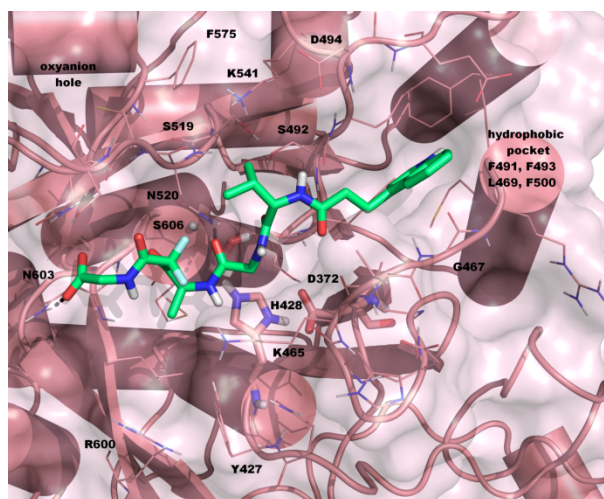


Figure S4. Docked pose of **17** (light green sticks) in its protonated state, in the cavity of the PfSUB1 (PDB ID: 4LVN). H-bonds are indicated by black dotted lines. Catalytic triad is represented by salmon sticks while the other residues in the binding site were represented by lines. Molecular graphics were generated by PyMOL (The PyMOL Molecular Graphics System, v1.6-alpha; Schrodinger LLC: New York, 2013). Nonpolar hydrogens were omitted for clarity.

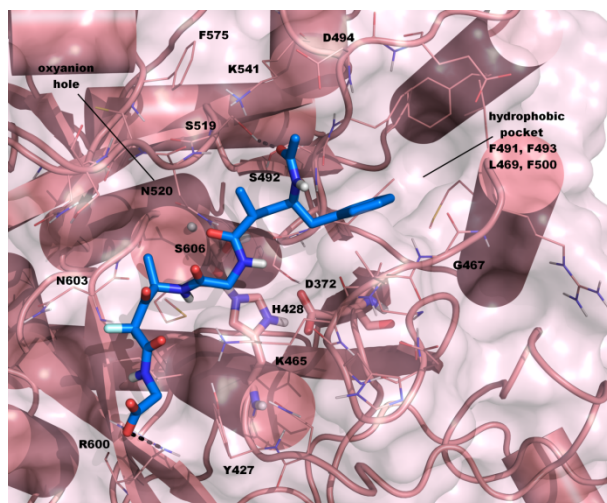
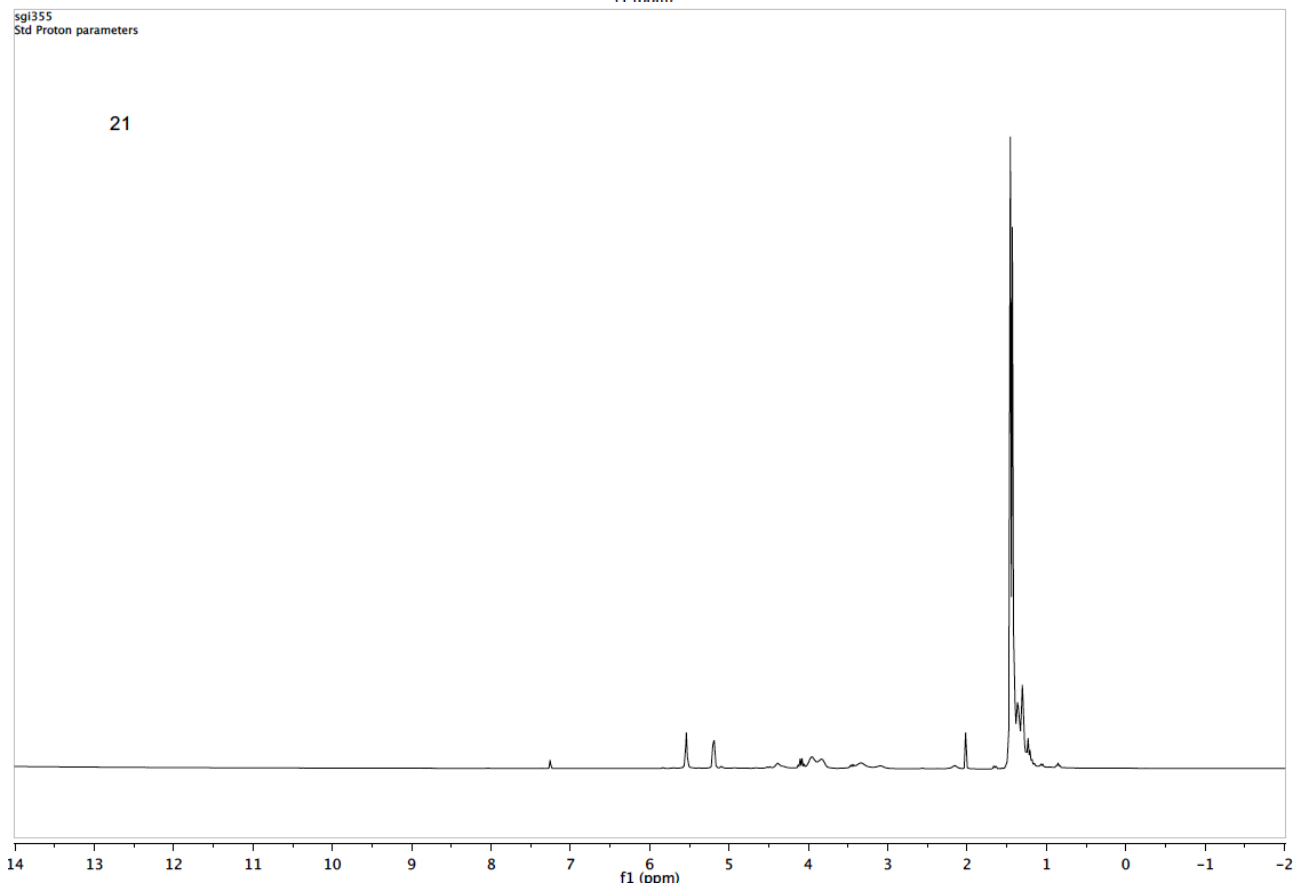
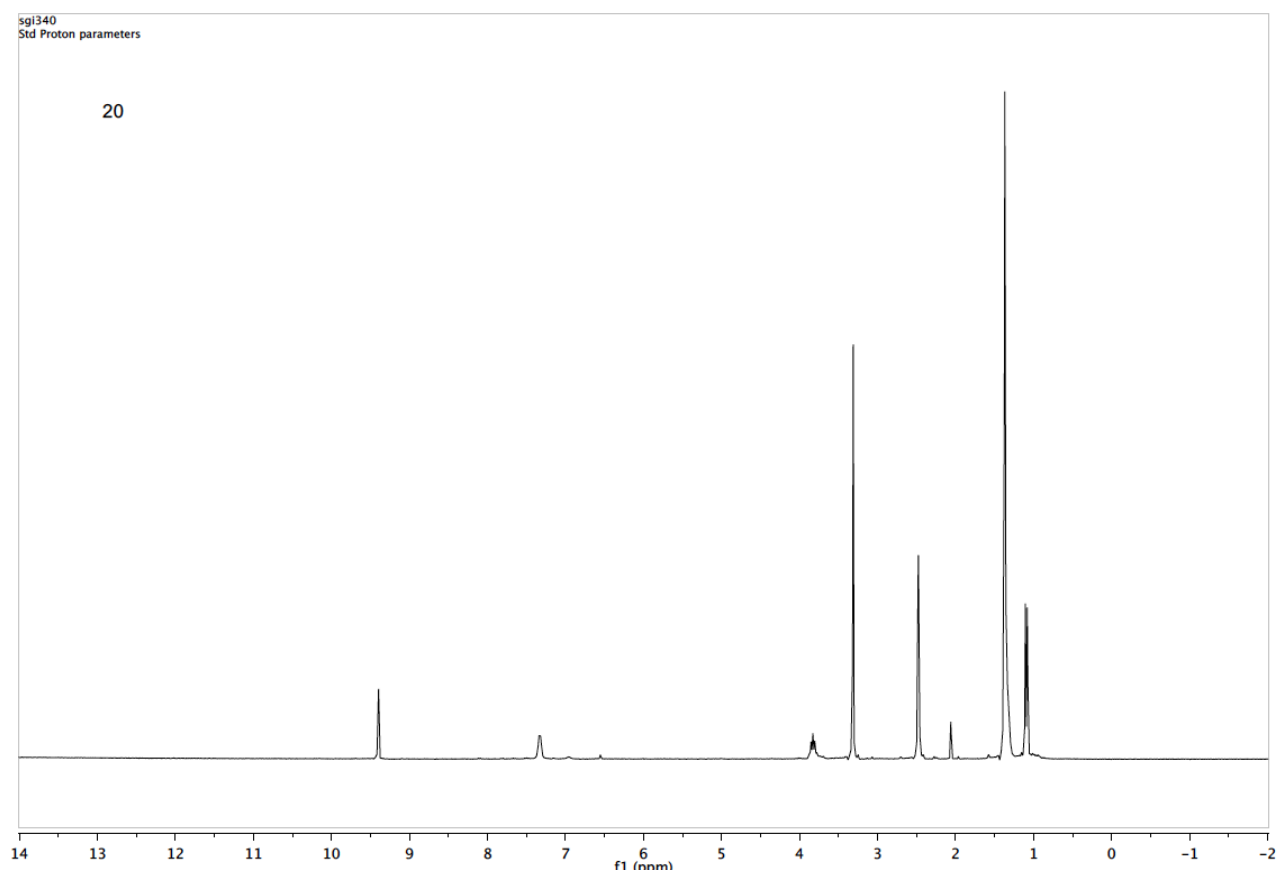
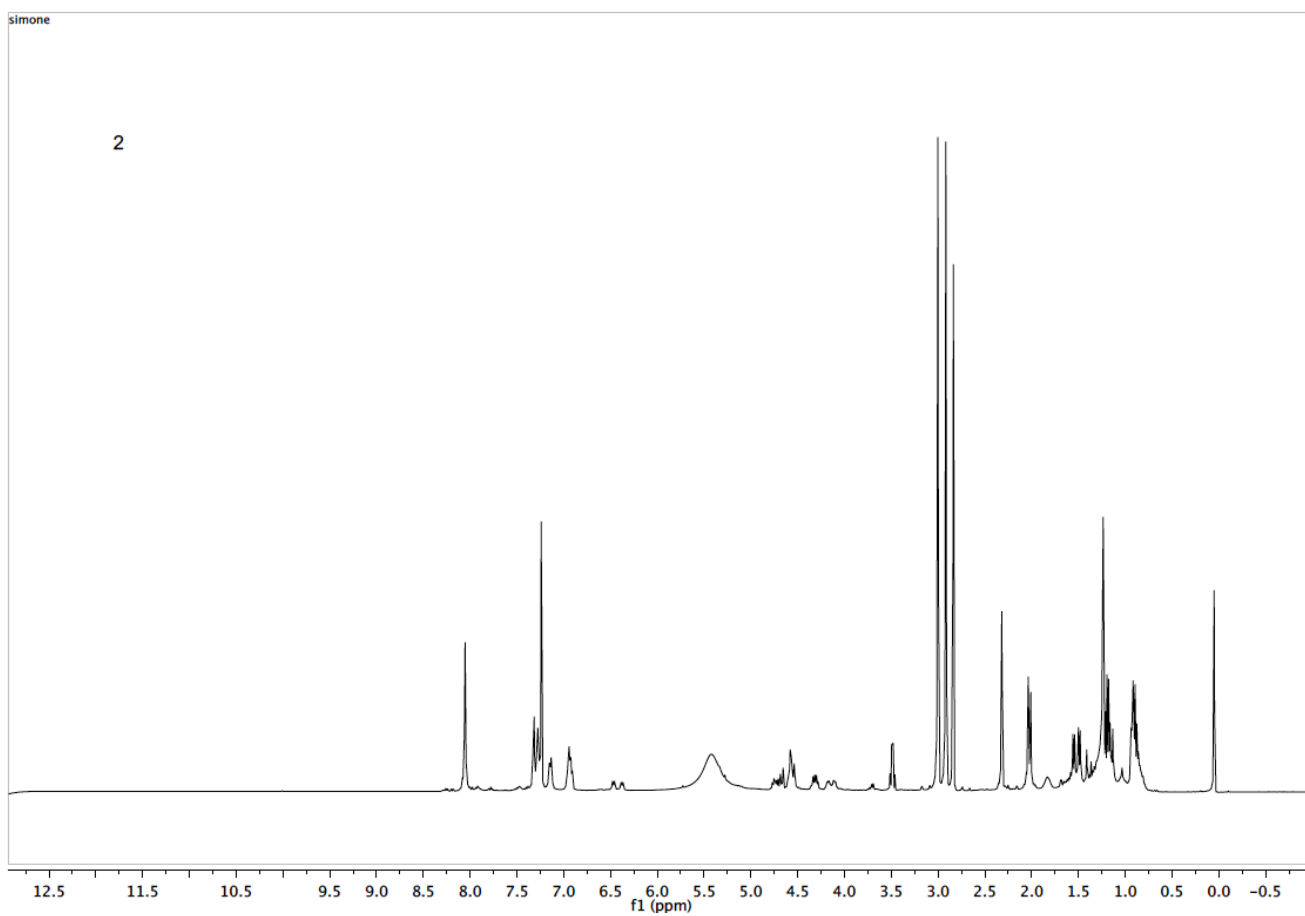
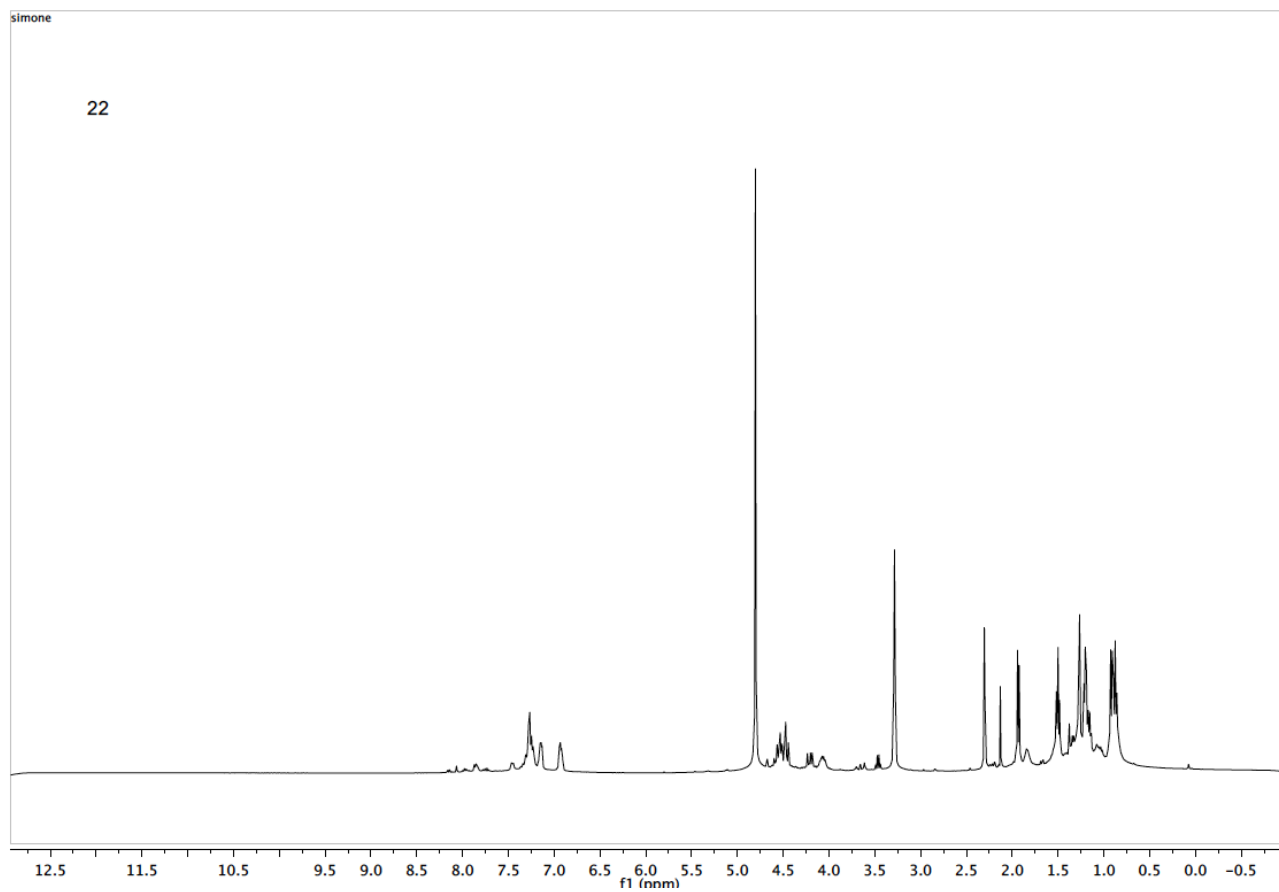


Figure S5. Docked pose of **18** (blue sticks) in the cavity of the PfSUB1 (PDB ID: 4LVN). H-bonds are indicated by black dotted lines. Catalytic triad is represented by salmon sticks while the other residues in the binding site were represented by lines. Accordingly, the Goldscore value is 67.34, while the ΔG_{bind} is -71.95 kcal/mol. Molecular graphics were generated by PyMOL (The PyMOL Molecular Graphics System, v1.6-alpha; Schrodinger LLC: New York, 2013). Nonpolar hydrogens were omitted for clarity.

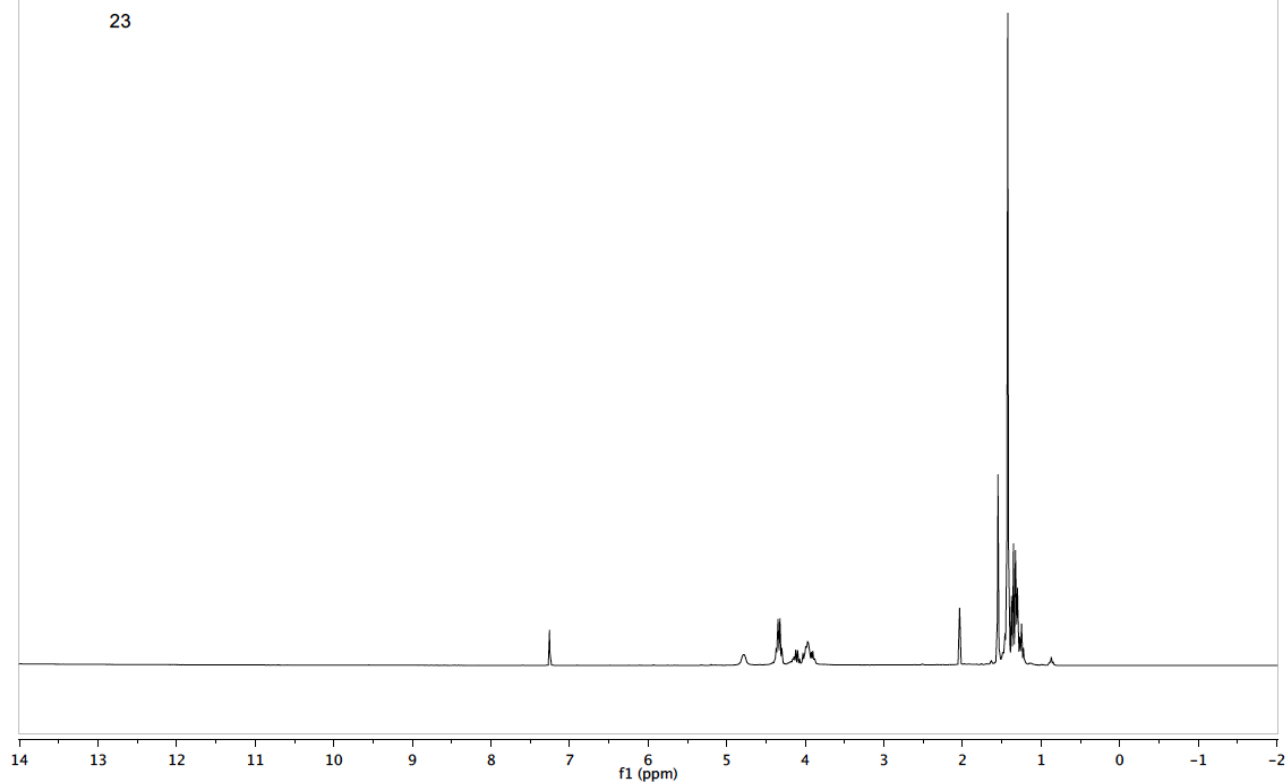
¹H NMR spectra





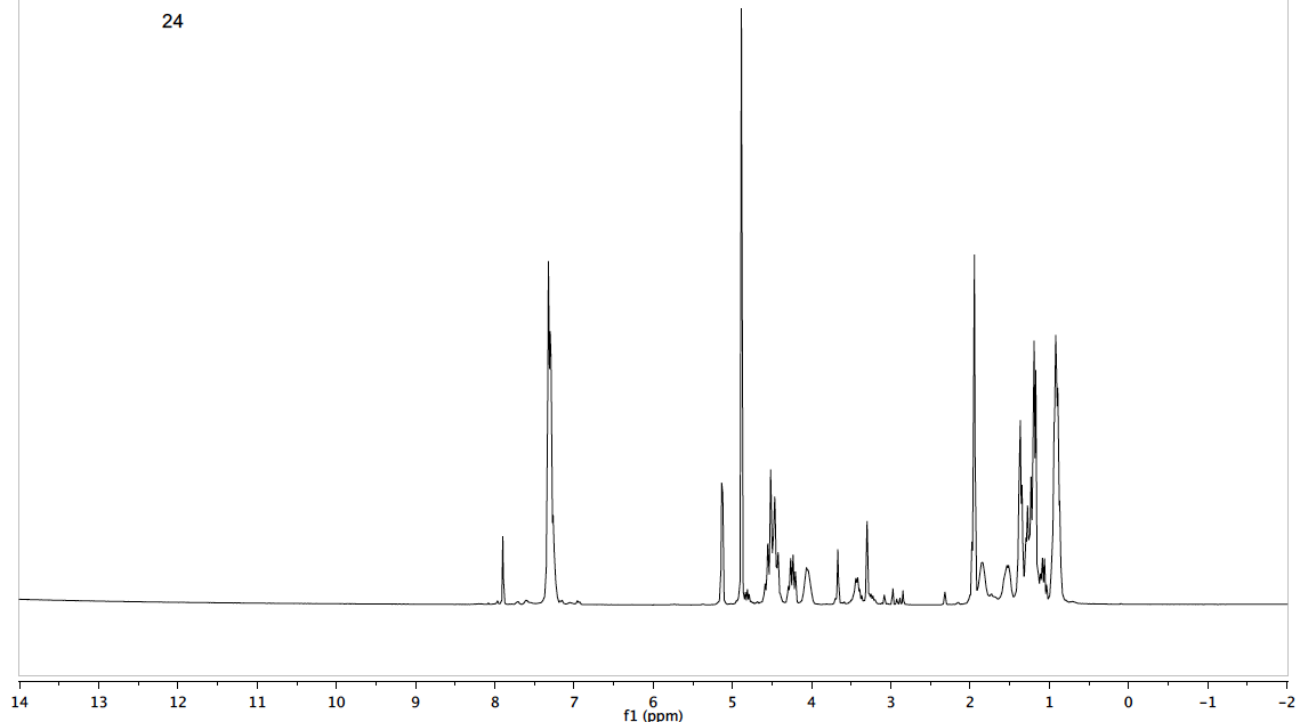
sgl287
Std Proton parameters

23



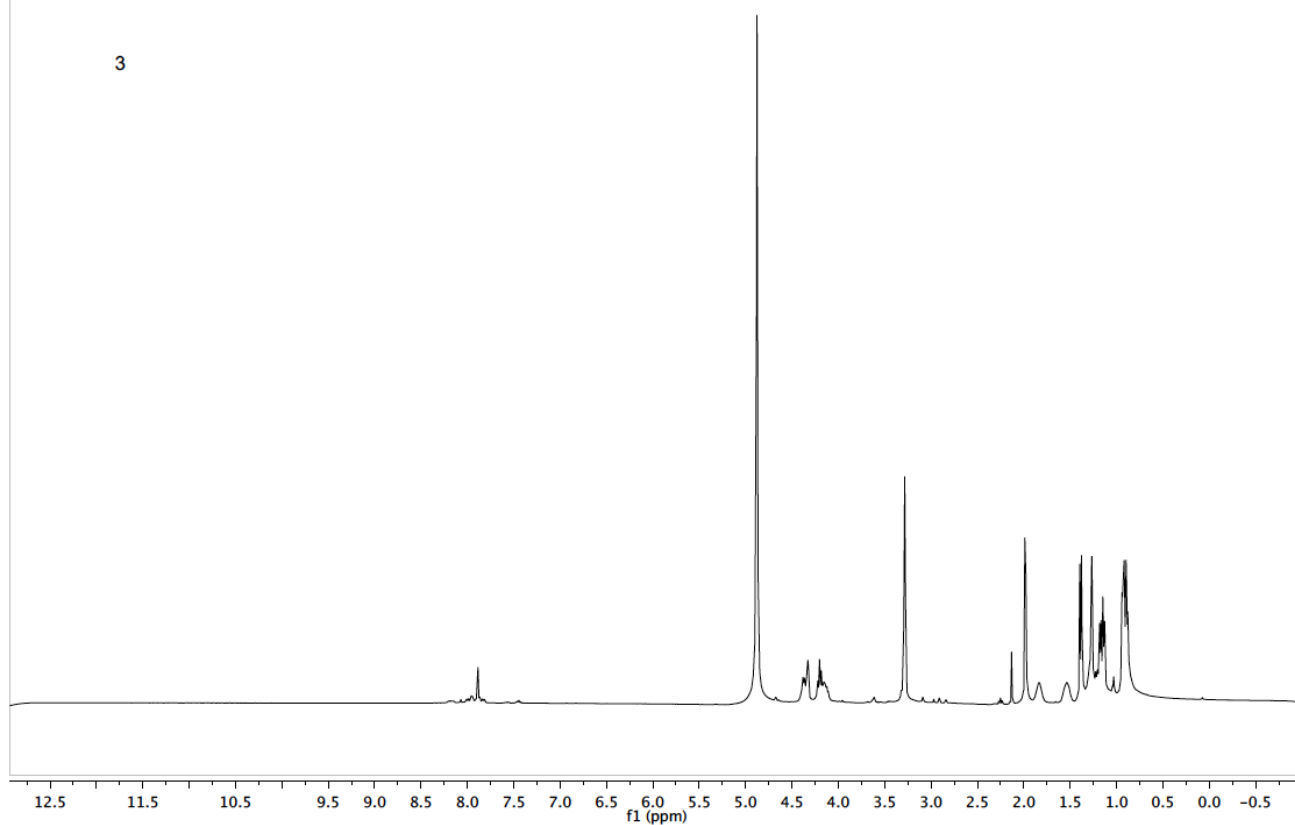
sgl354
Std Proton parameters

24

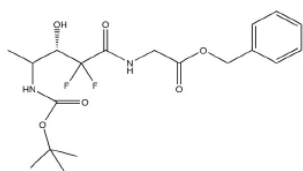


simone

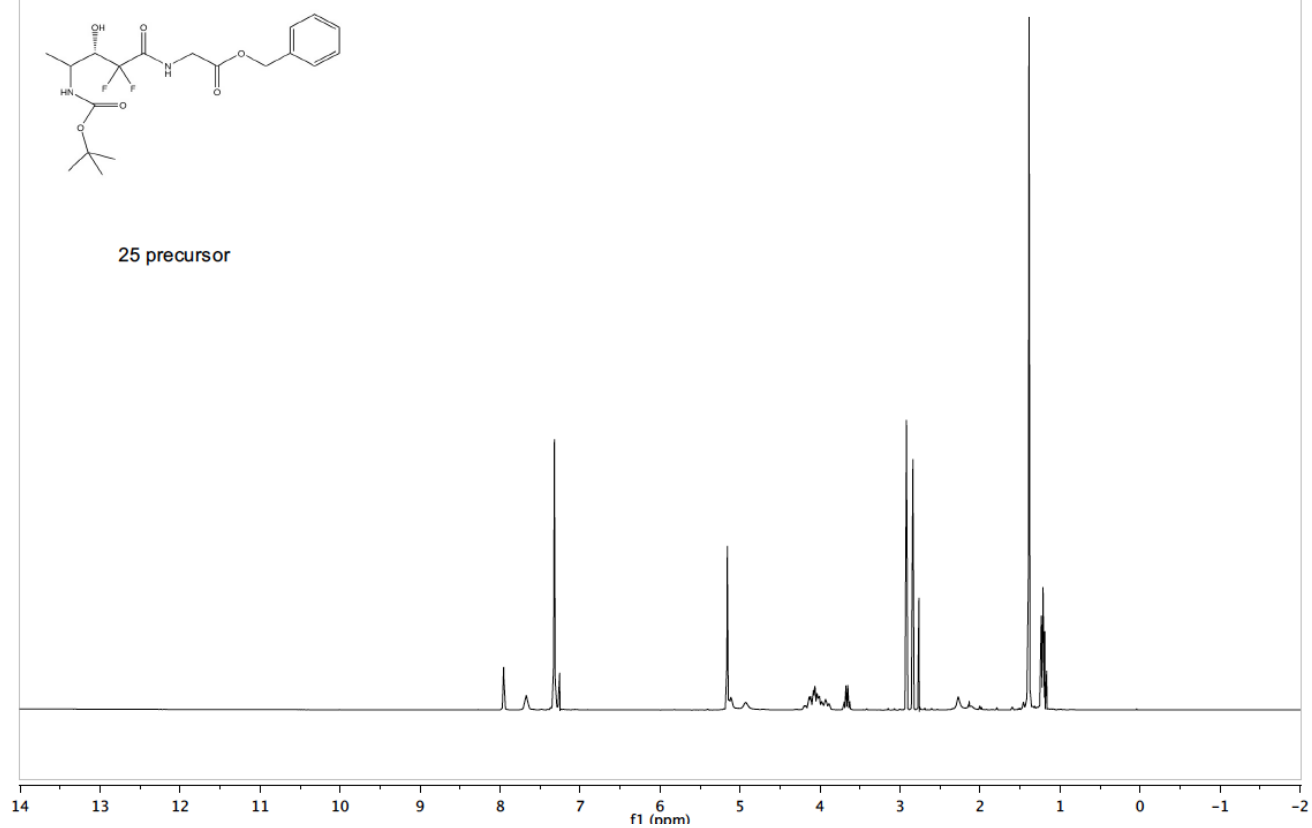
3



sgi261
Std Proton parameters

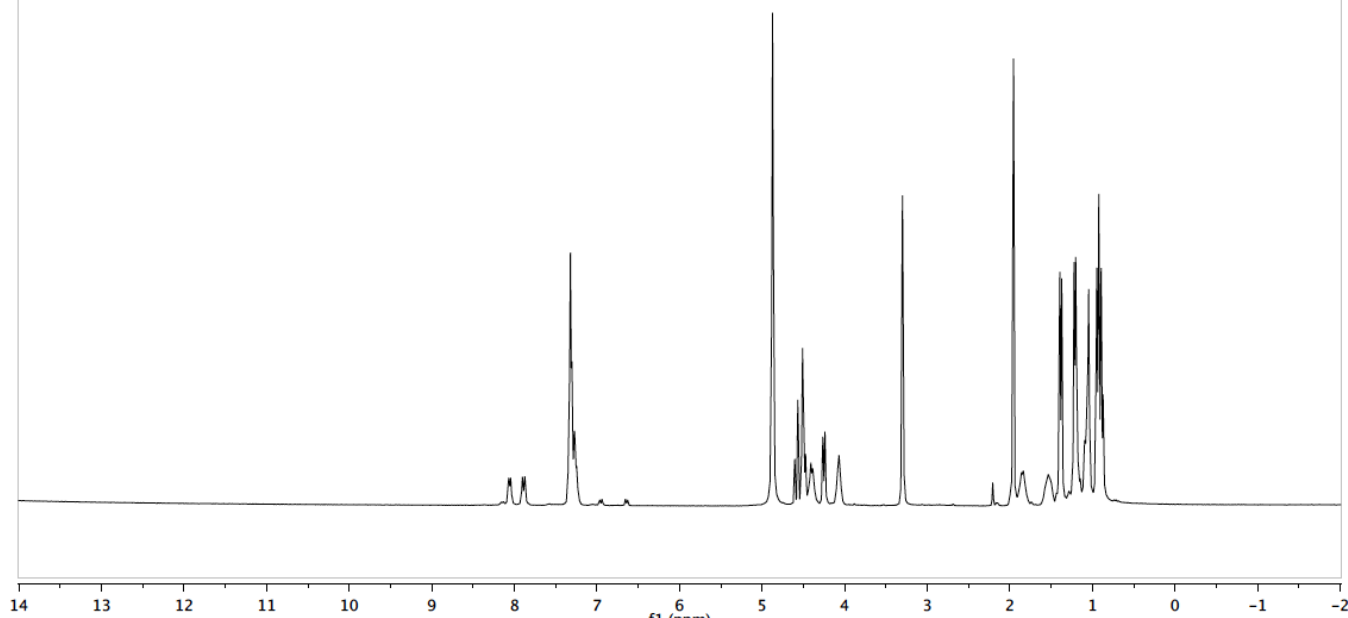


25 precursor



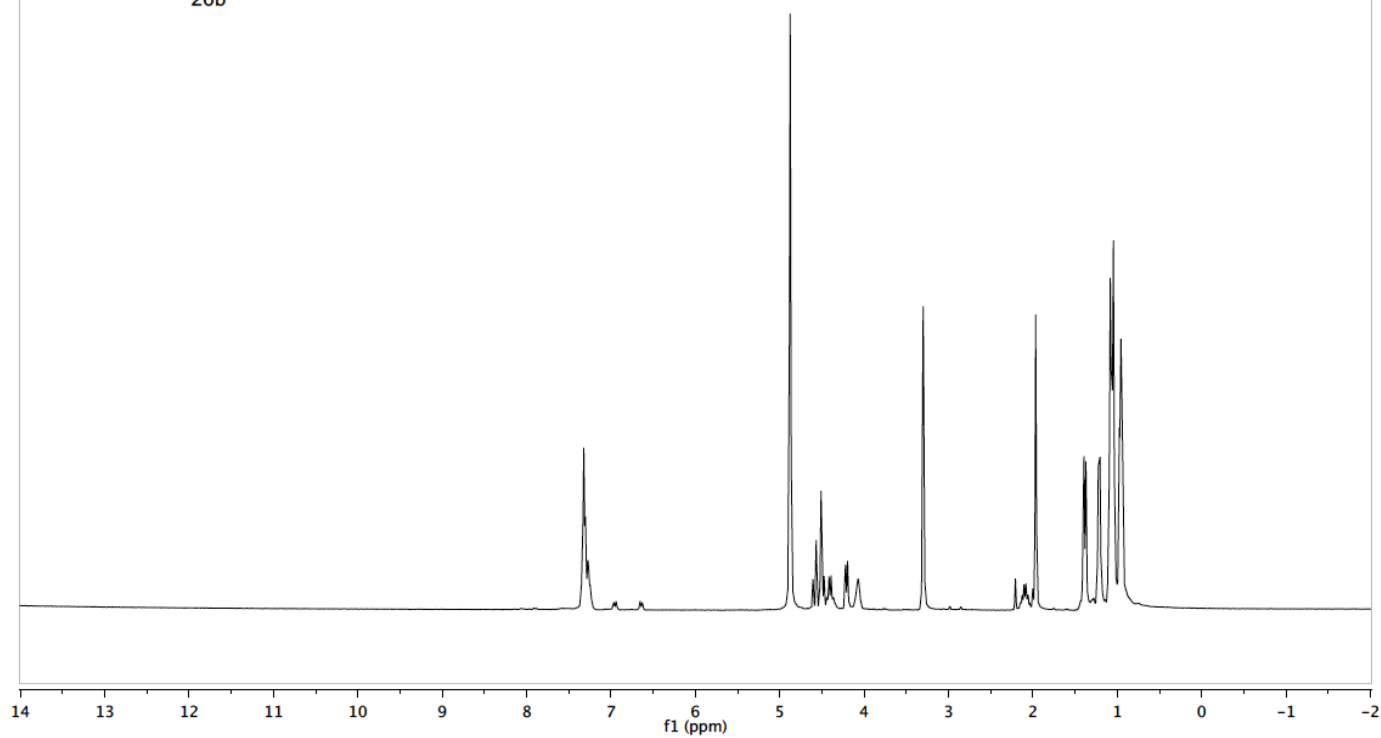
sgi329
Std Proton parameters

26a



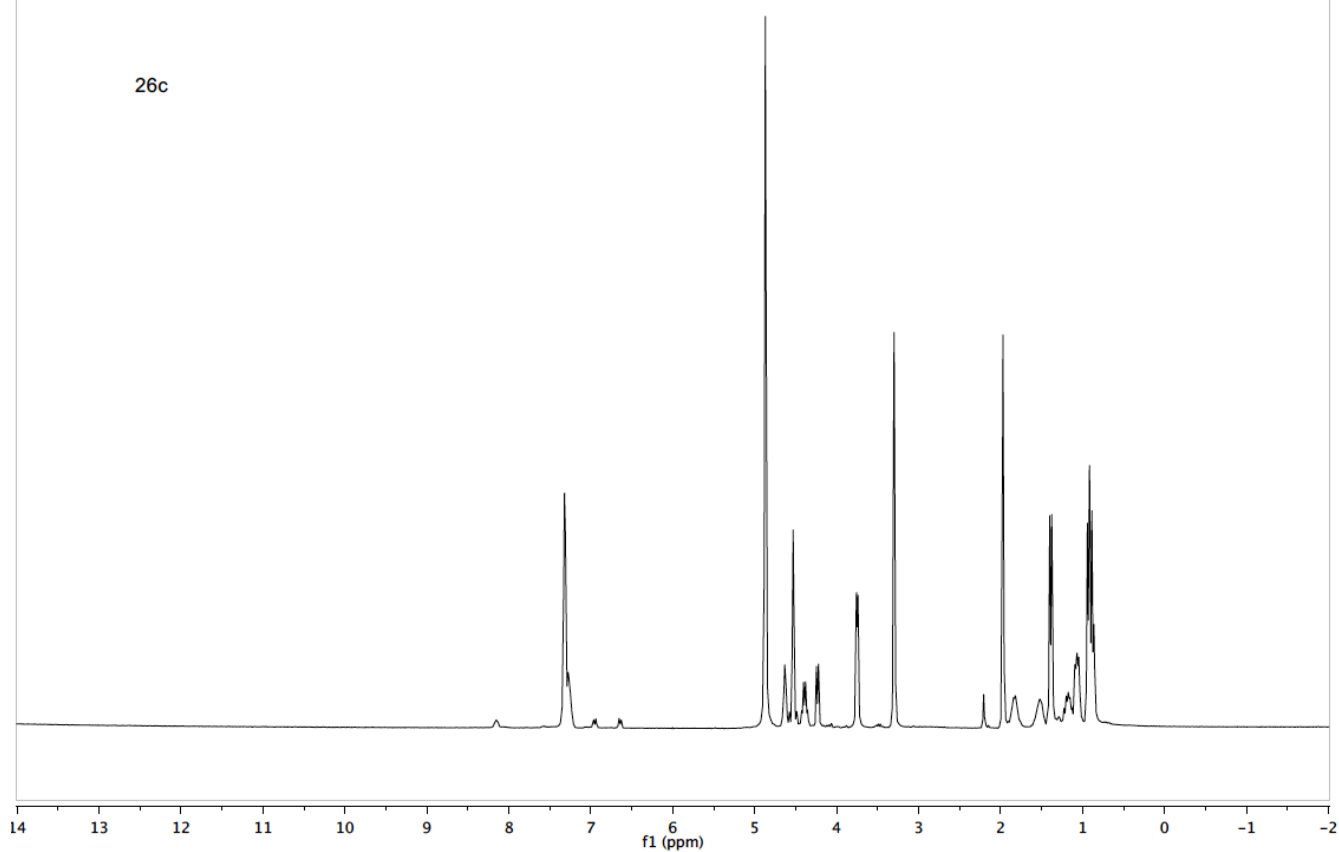
sgi331
Std Proton parameters

26b



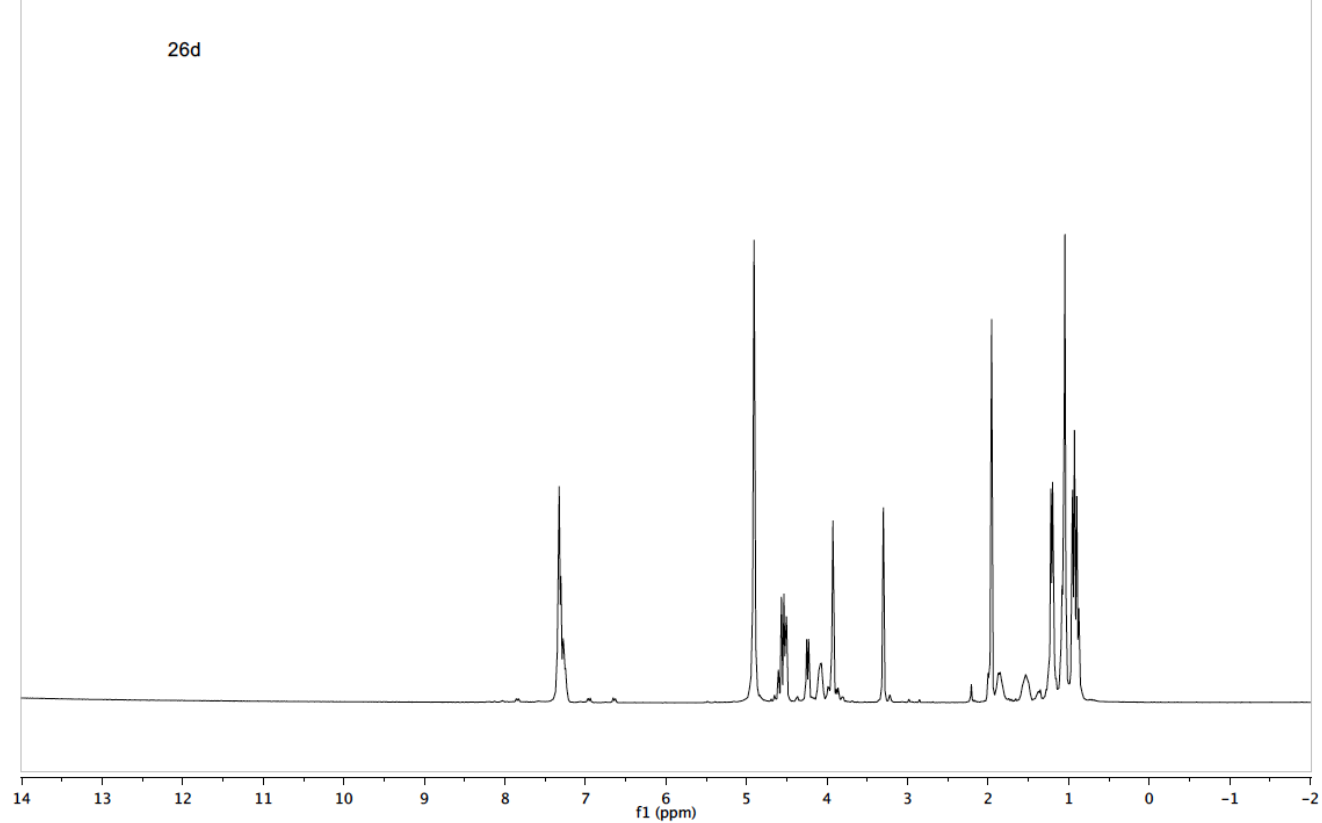
sgl330
Std Proton parameters

26c



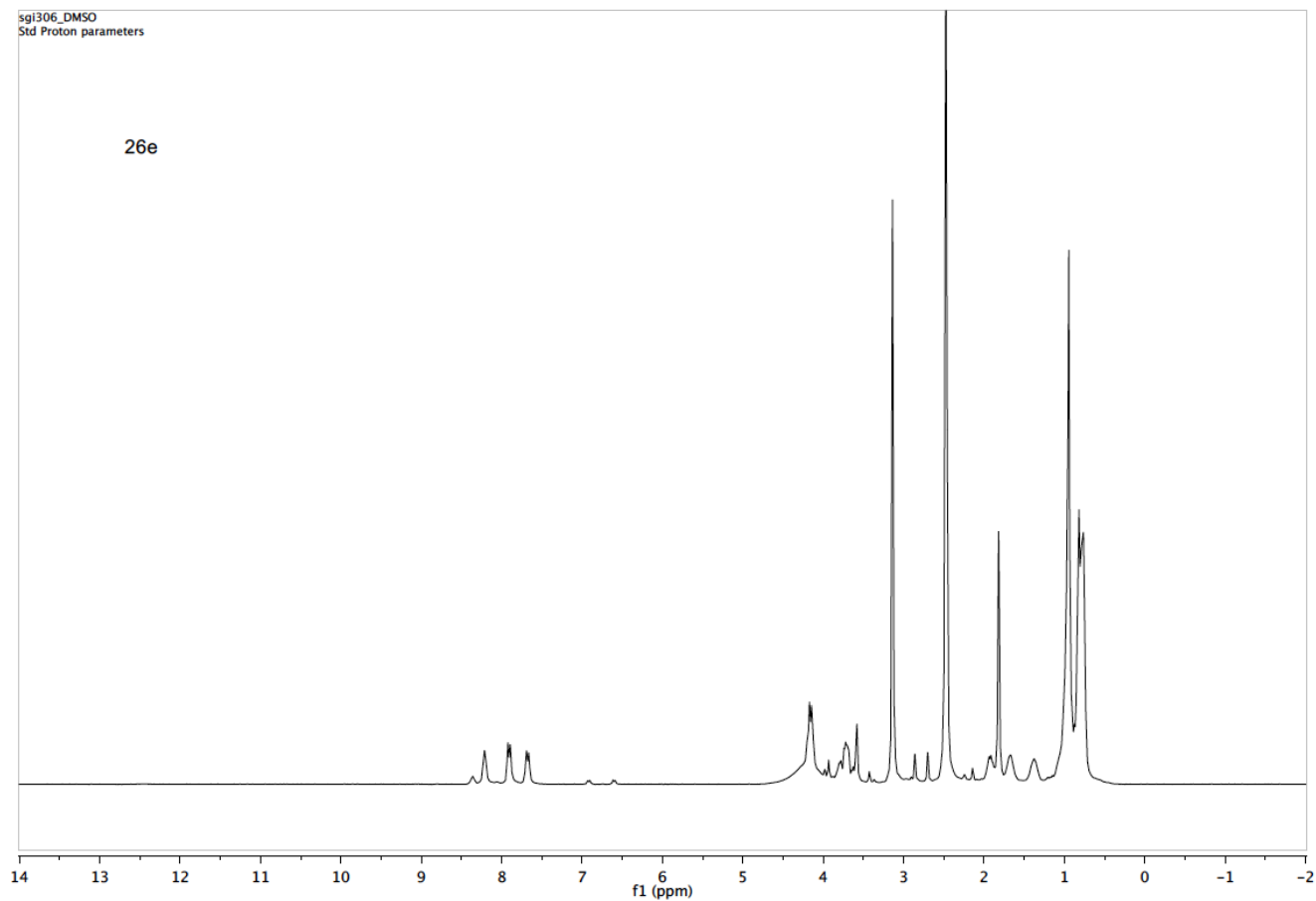
sgl352
Std Proton parameters

26d



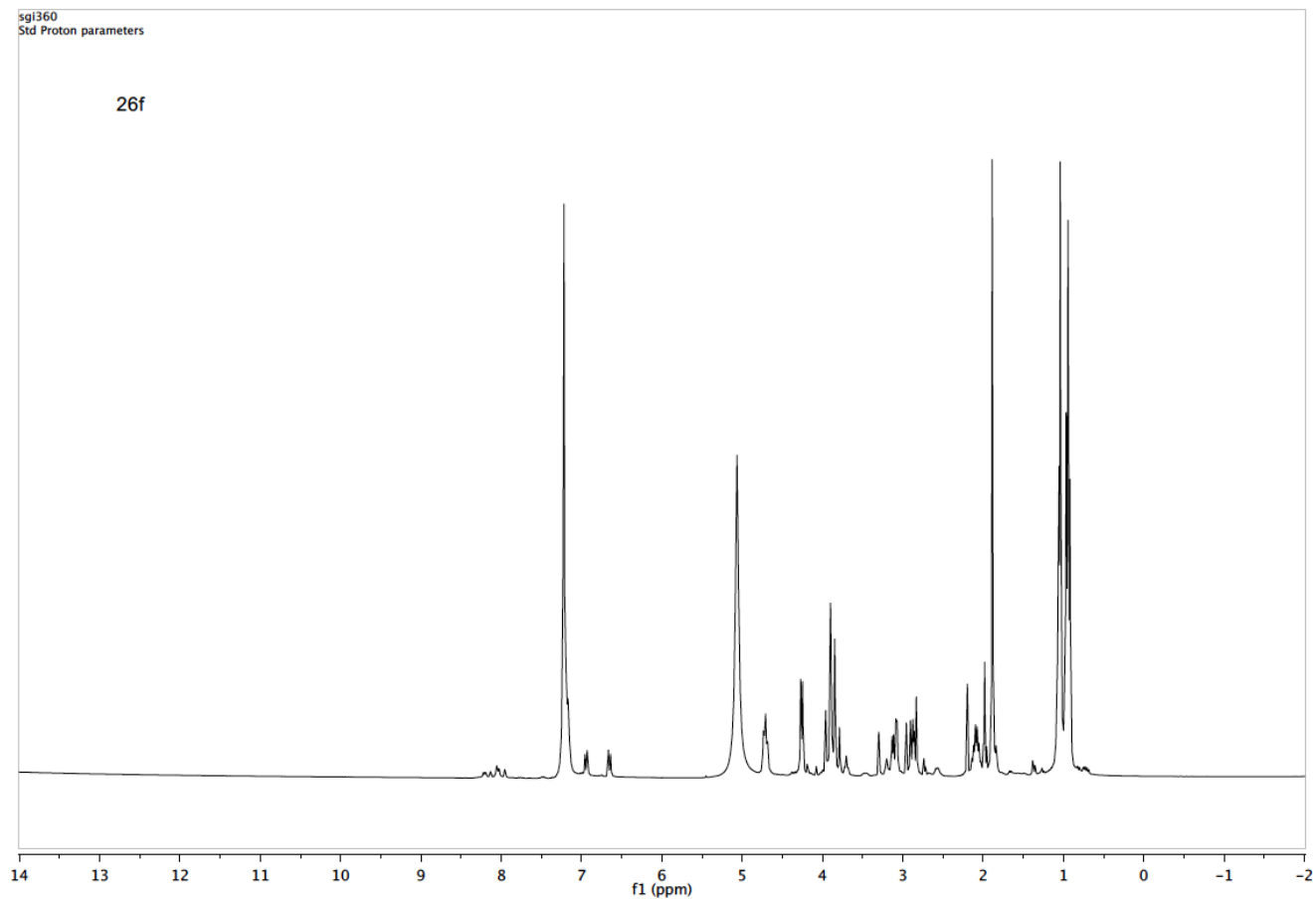
sgl306_DMSO
Std Proton parameters

26e



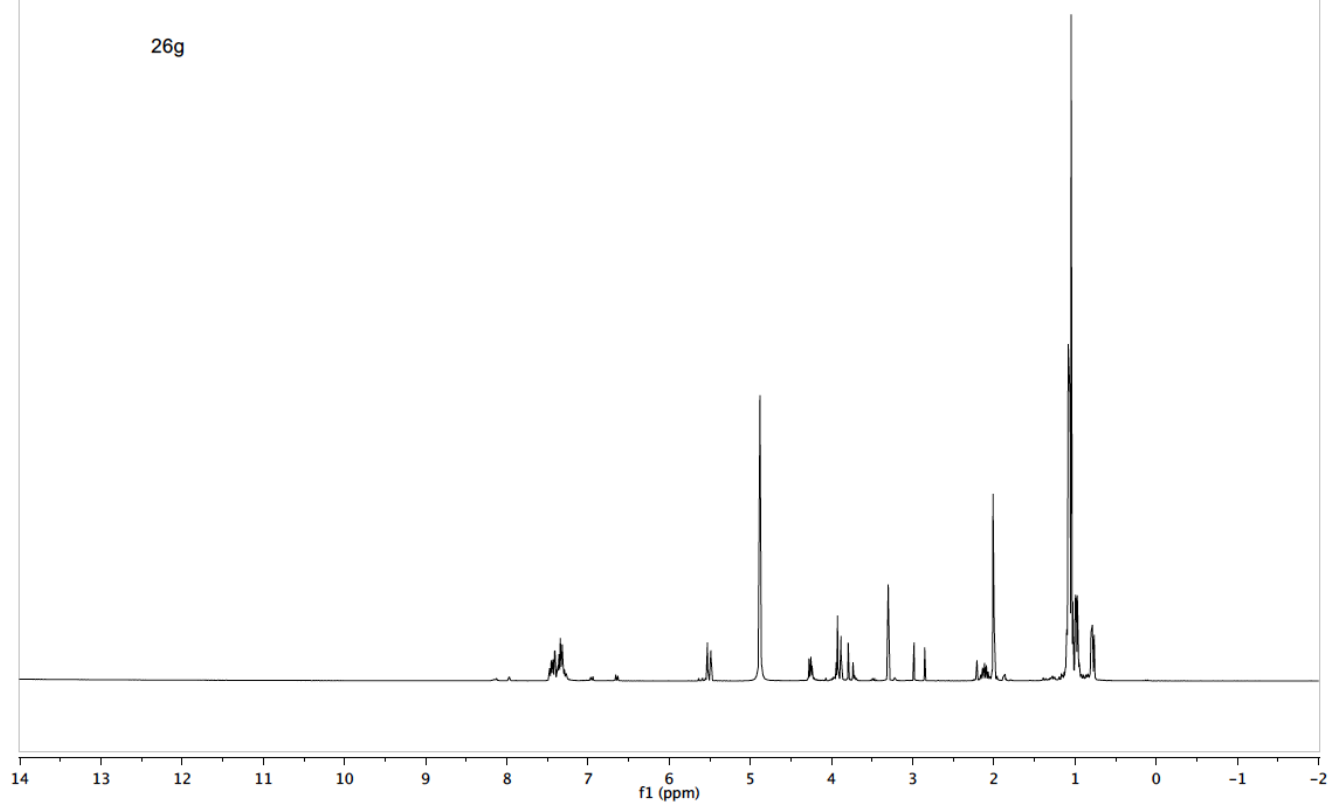
sgl360
Std Proton parameters

26f



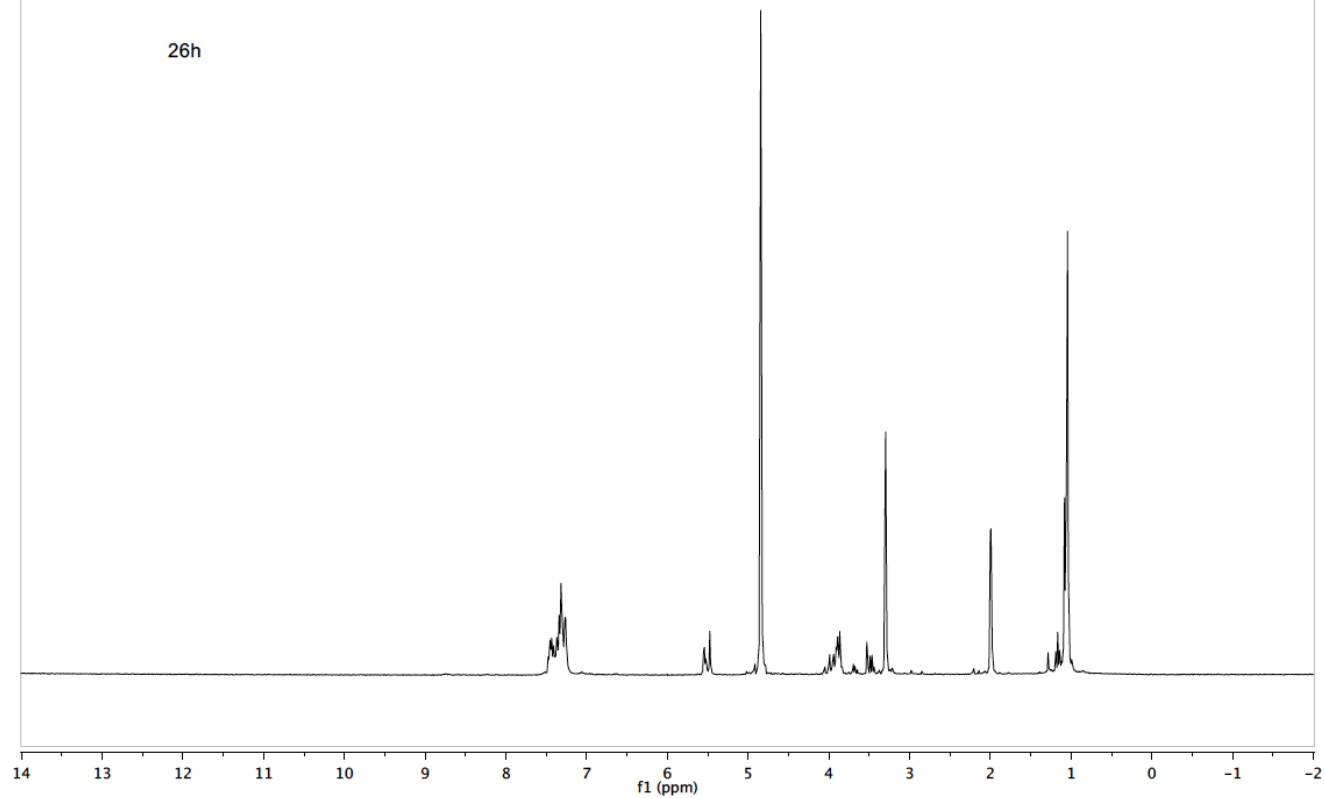
sgl361
Std Proton parameters

26g



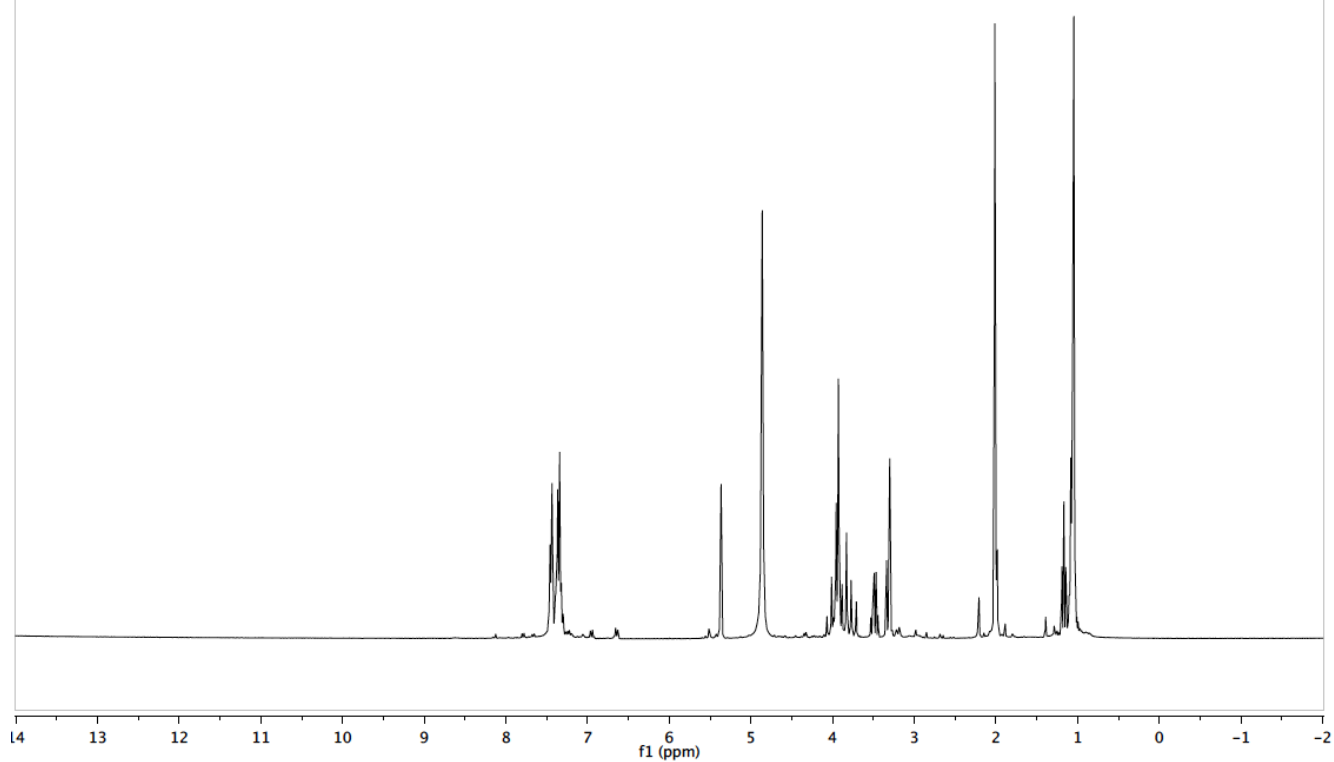
sgl400
Std Proton parameters

26h



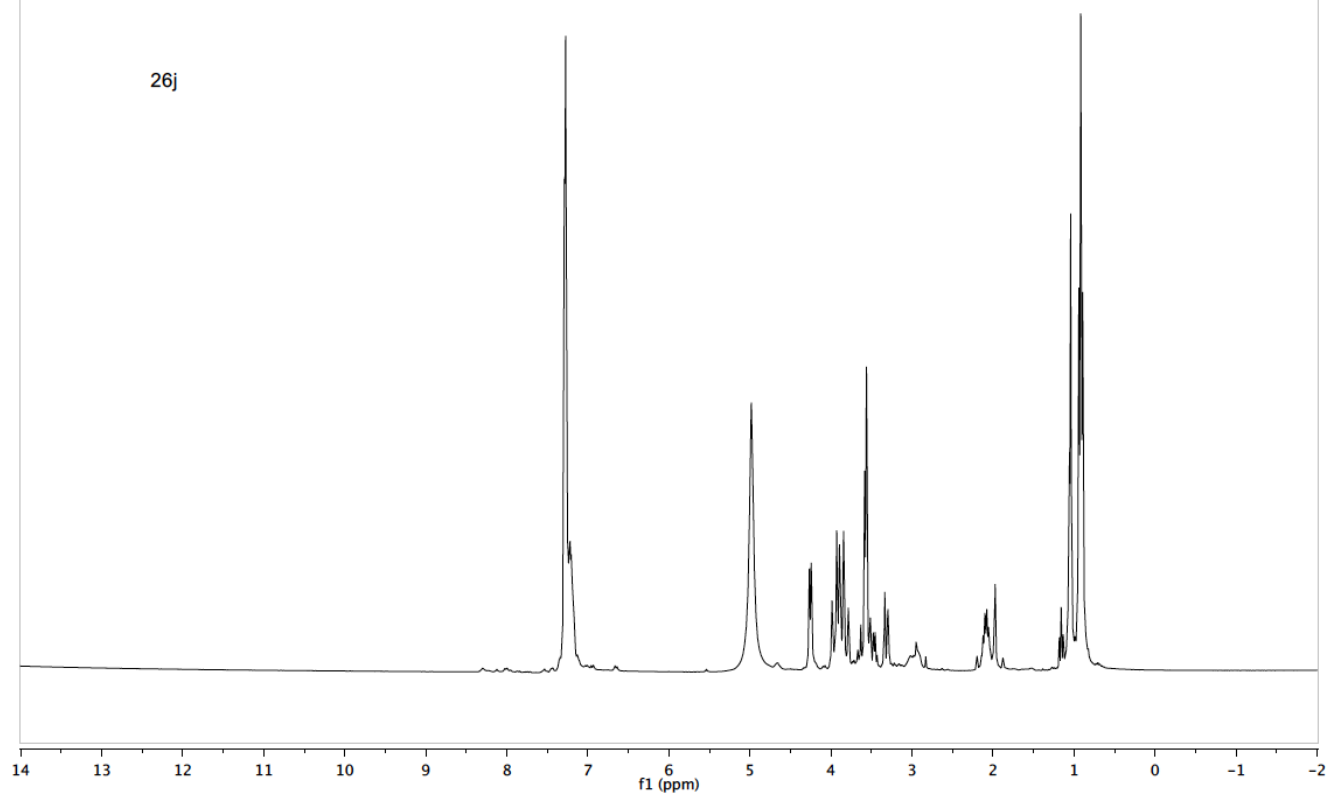
sgl399
Std Proton parameters

26i

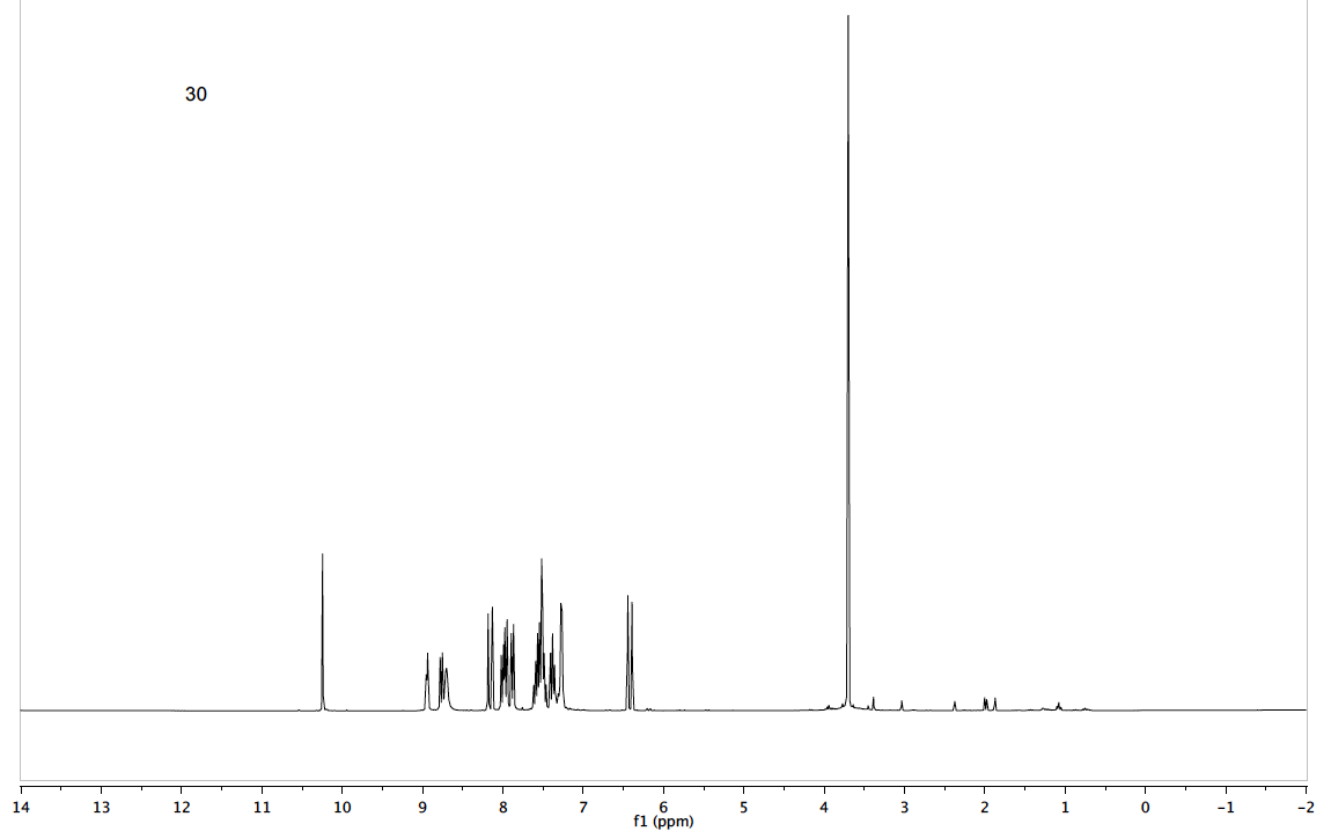


sgl401
Std Proton parameters

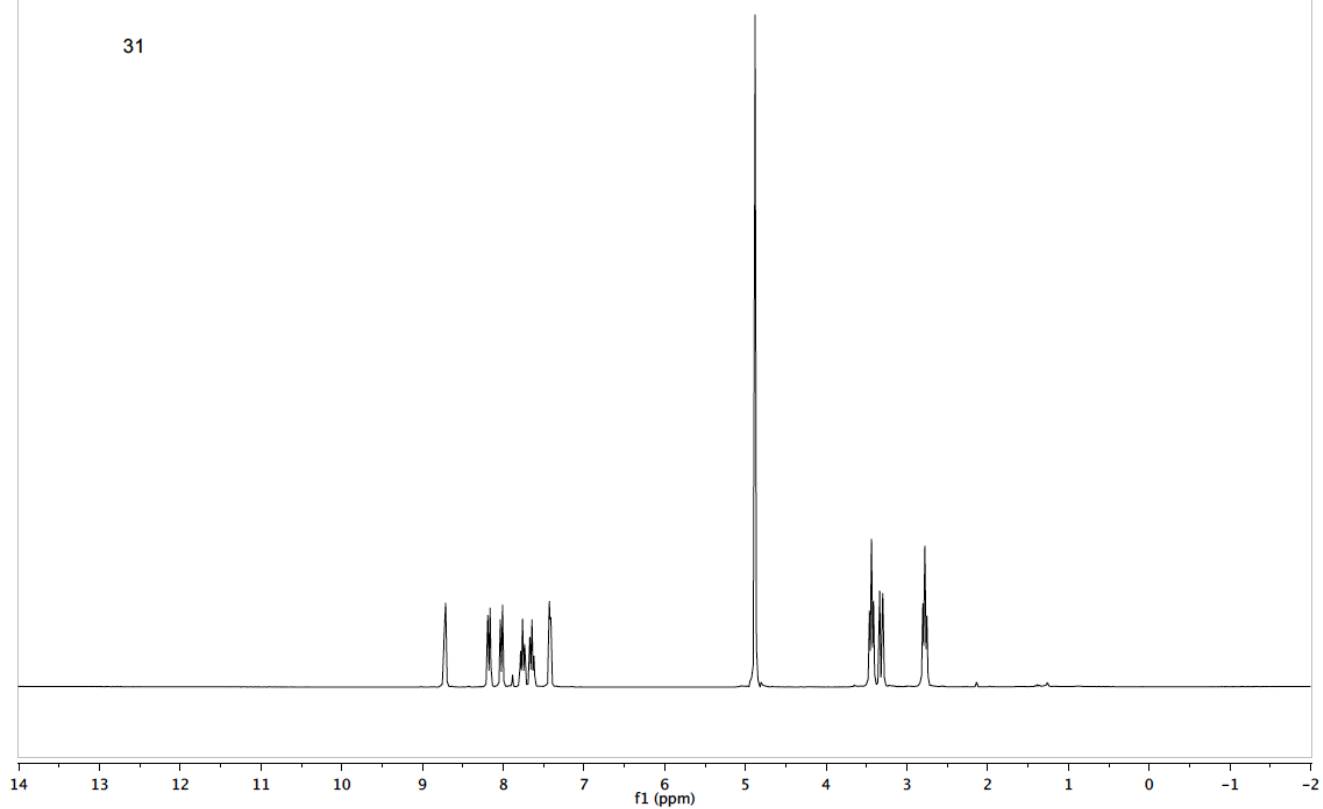
26j



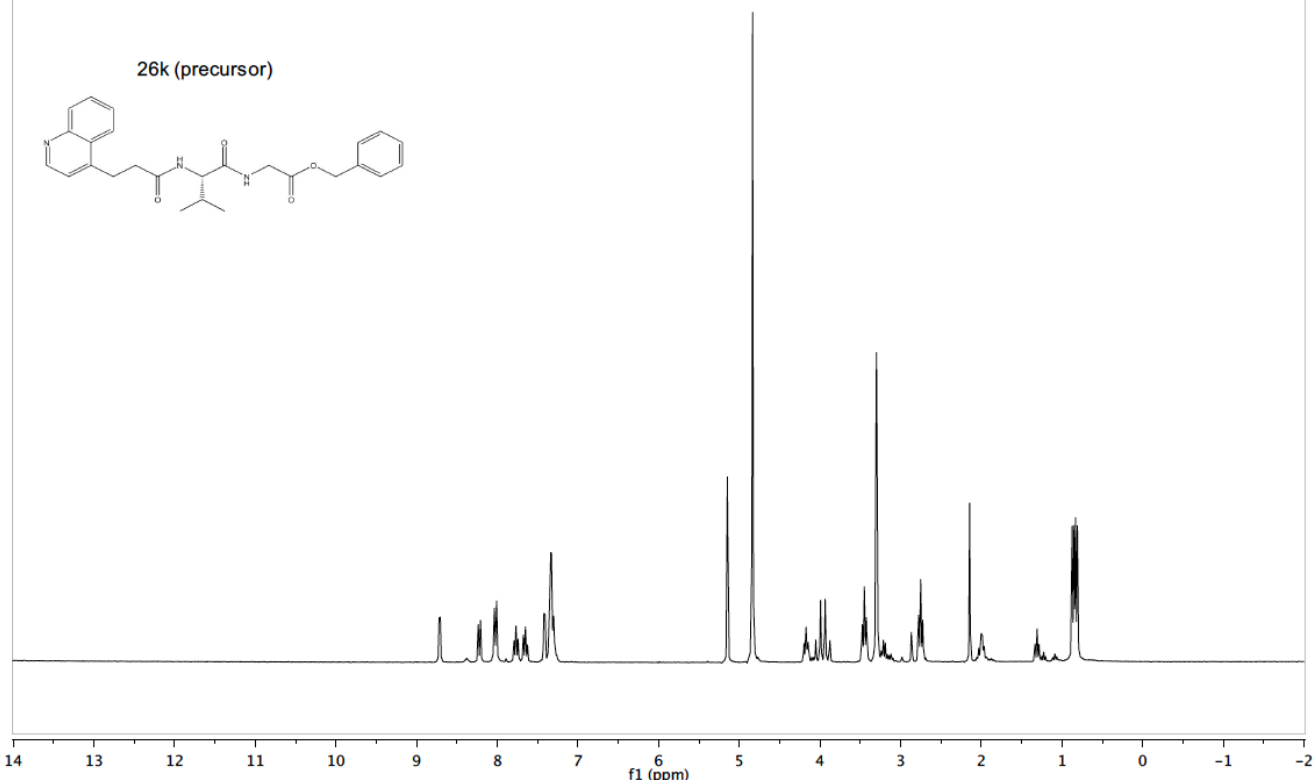
sgl409
Std Proton parameters



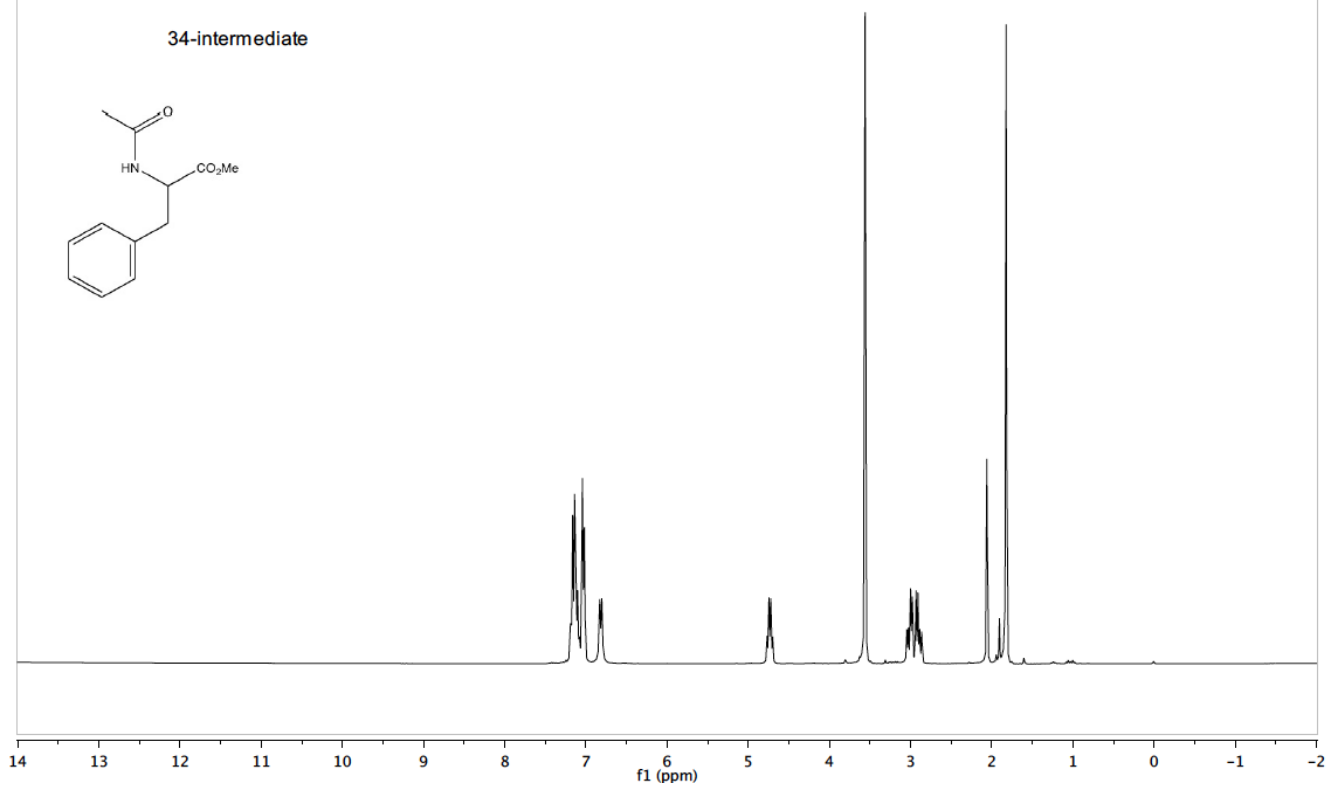
sgl415
Std Proton parameters



sgi416
Std Proton parameters

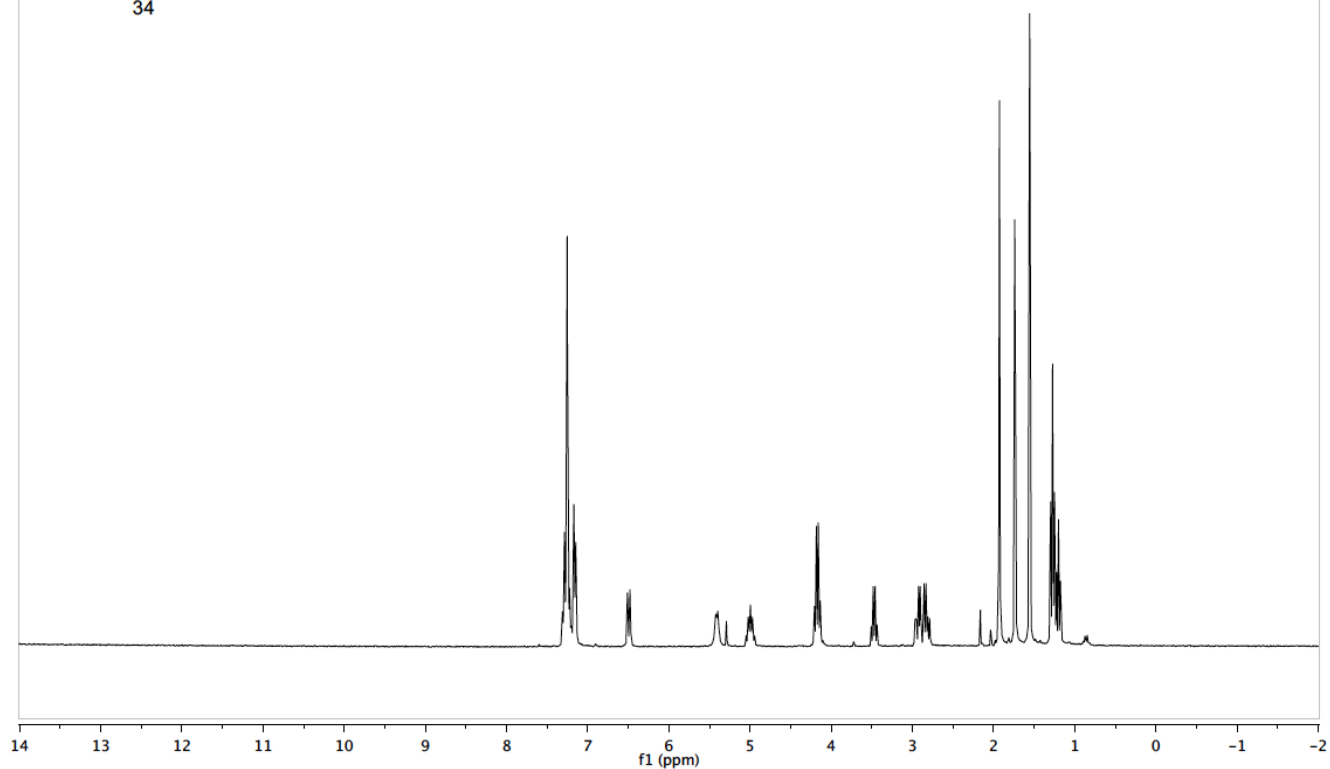


sgi435
Std Proton parameters



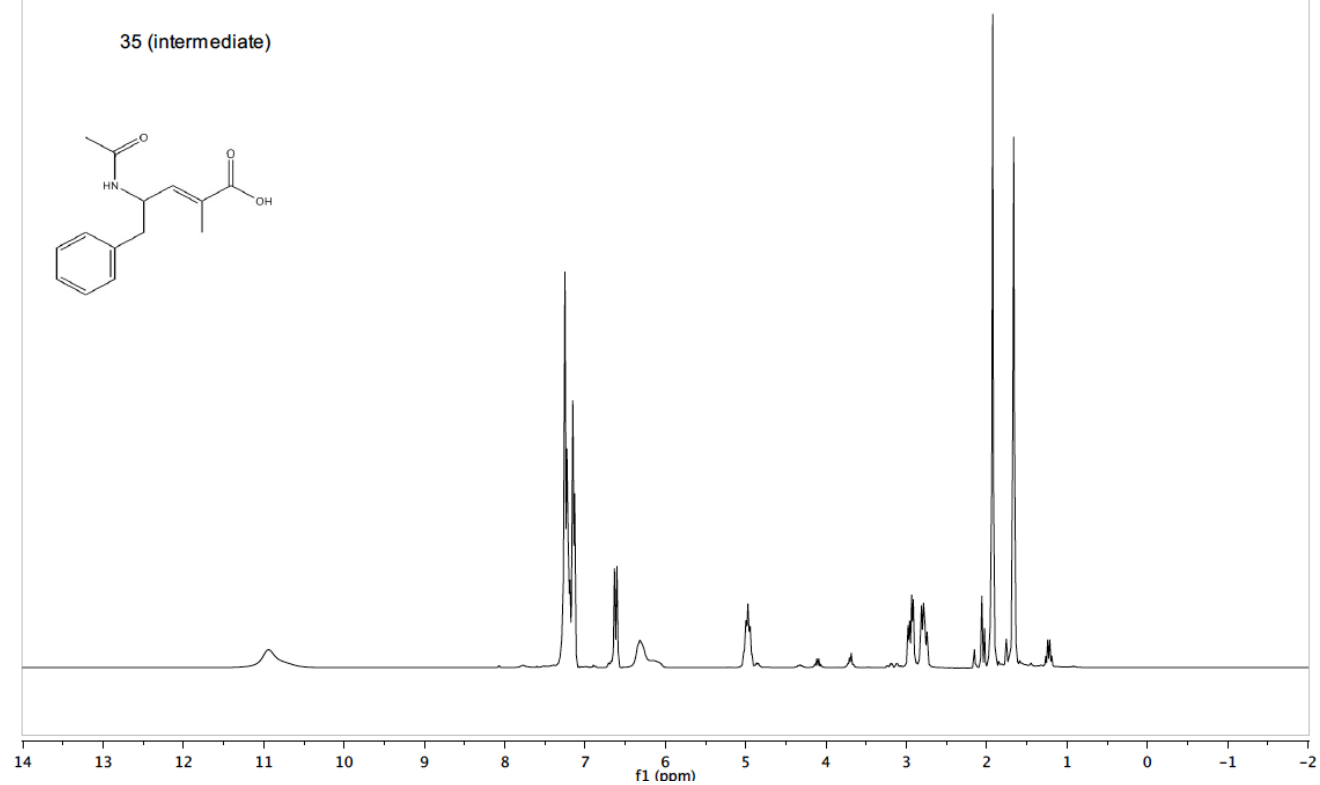
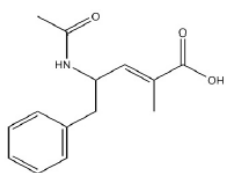
sgl437
Std Proton parameters

34



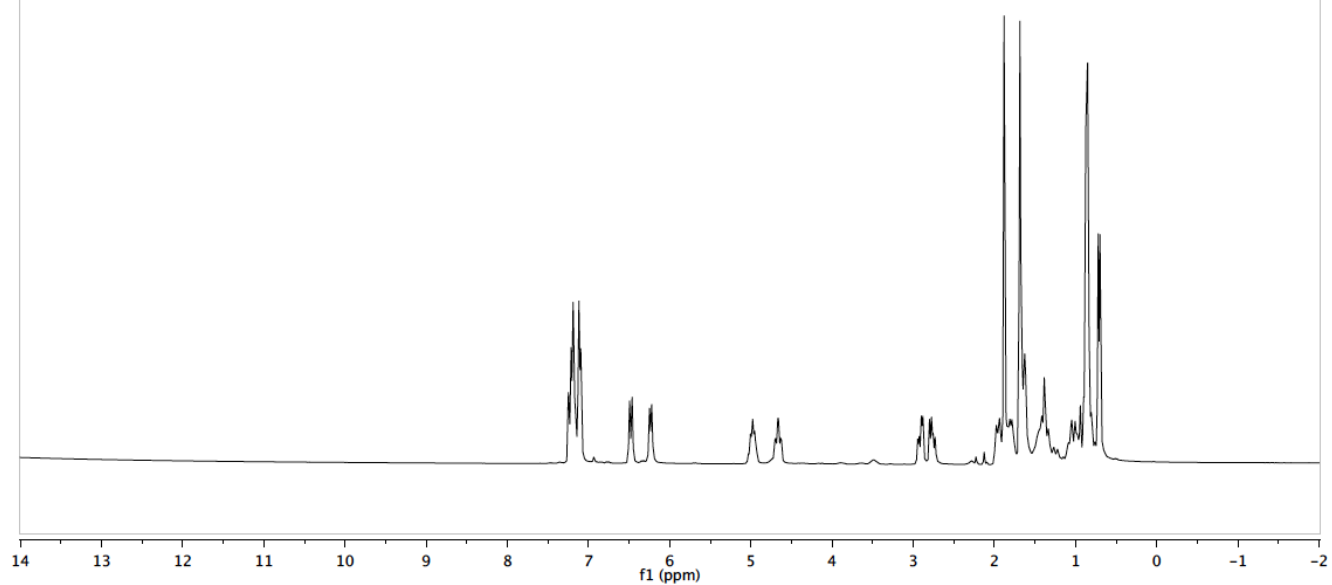
sgl438
Std Proton parameters

35 (intermediate)



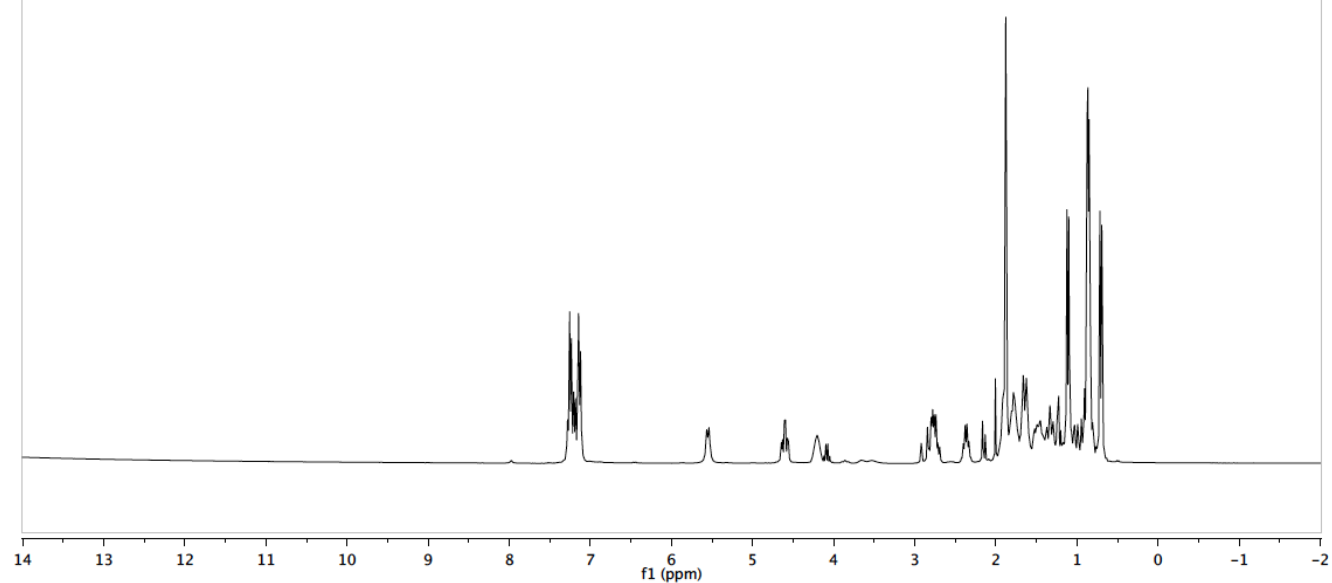
sgl440
Std Proton parameters

35



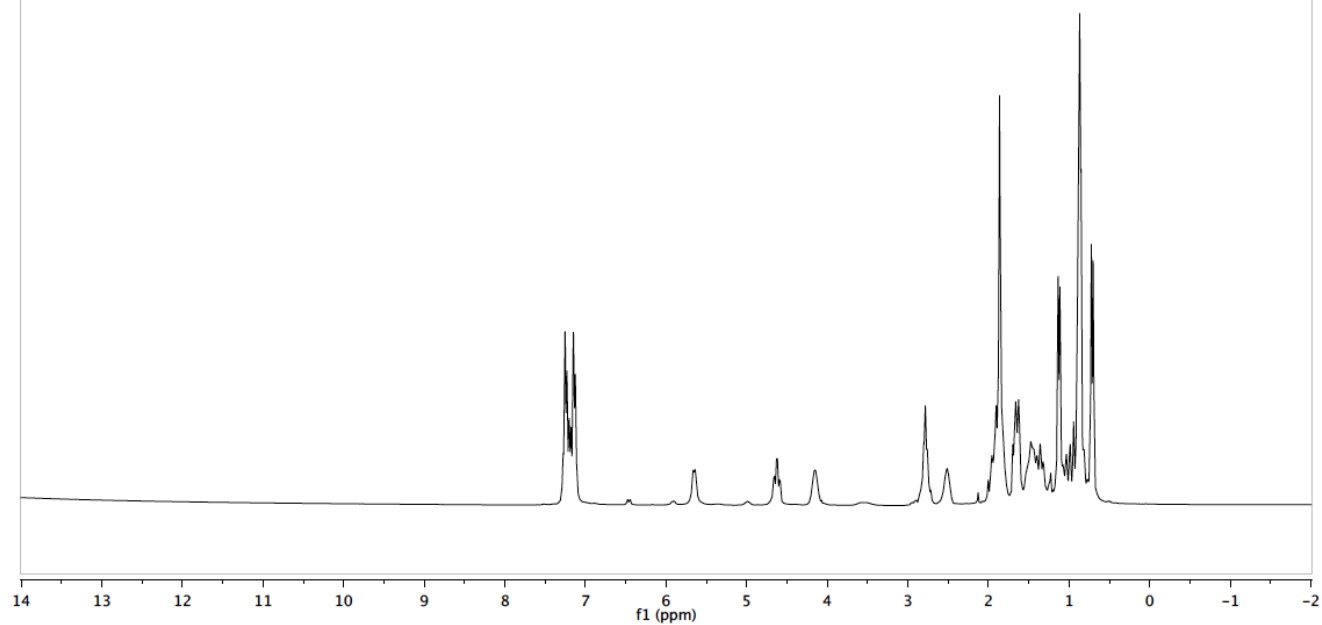
sgl442
Std Proton parameters

2S,3R-36



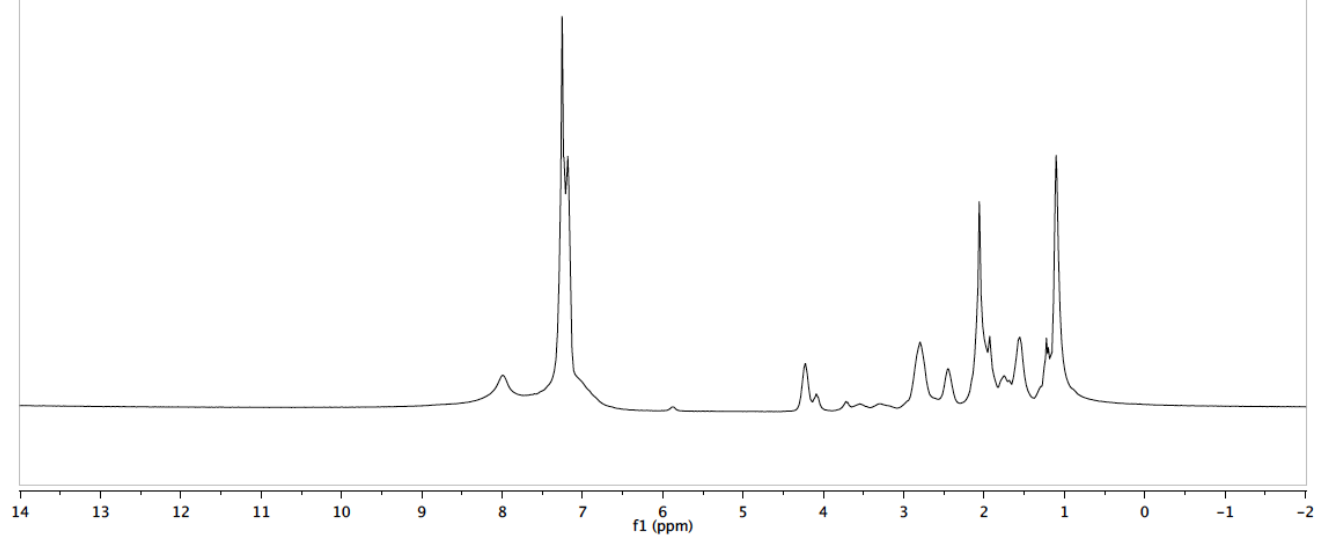
sgi441
Std Proton parameters

2R,4R-37



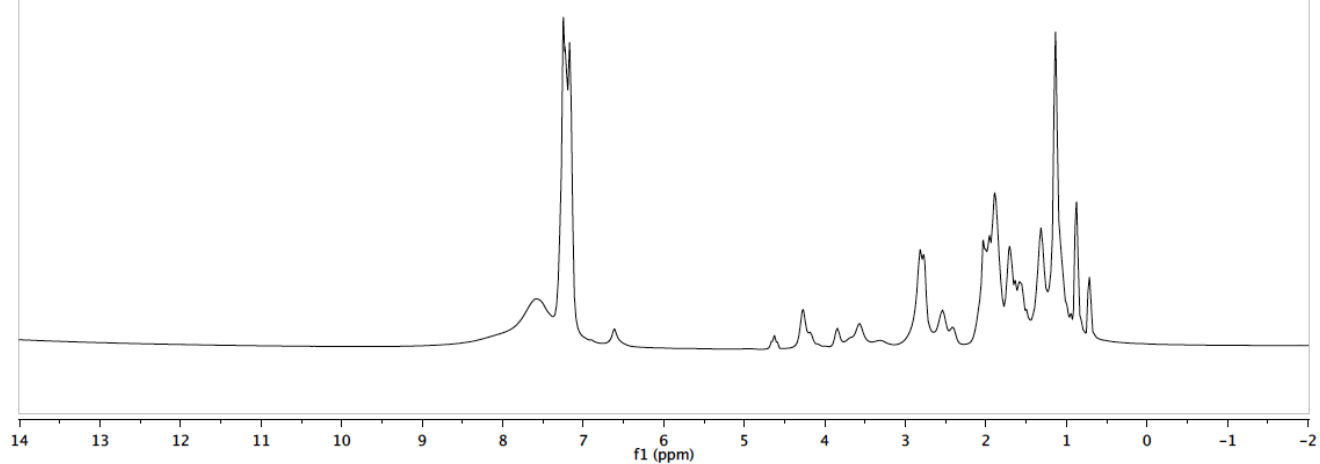
sgi443
Std Proton parameters

2S,4R-38



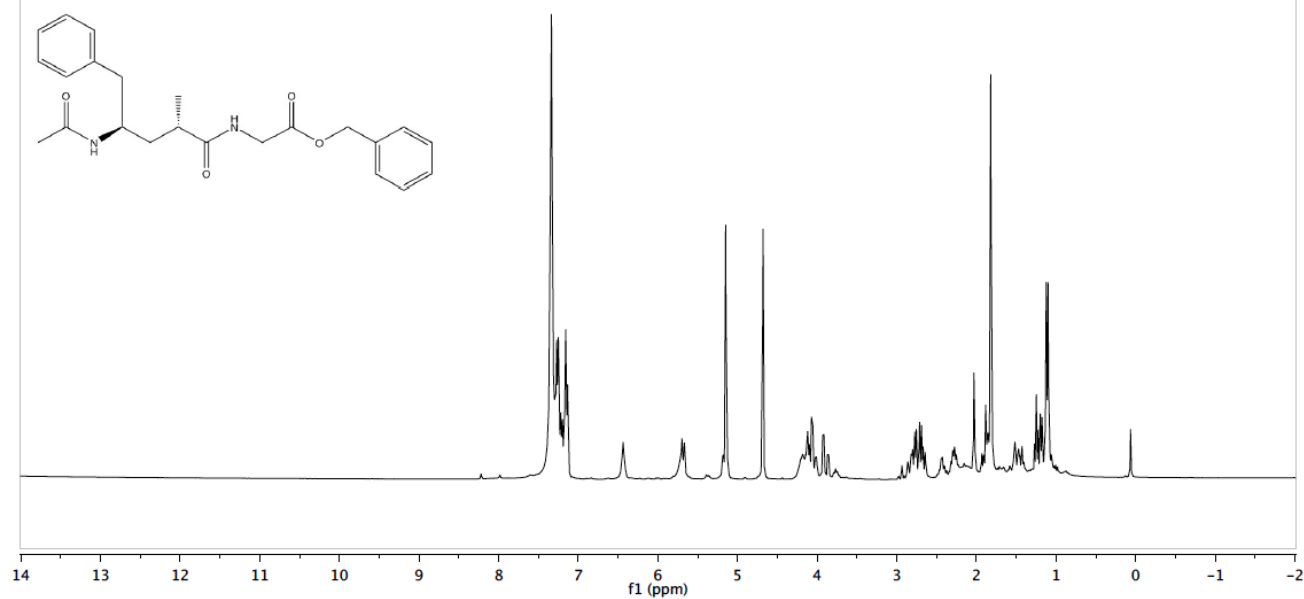
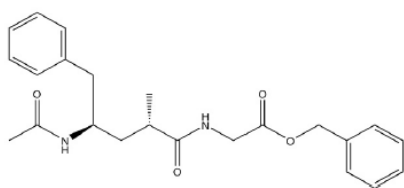
sgl444
Std Proton parameters

2R,4R-39



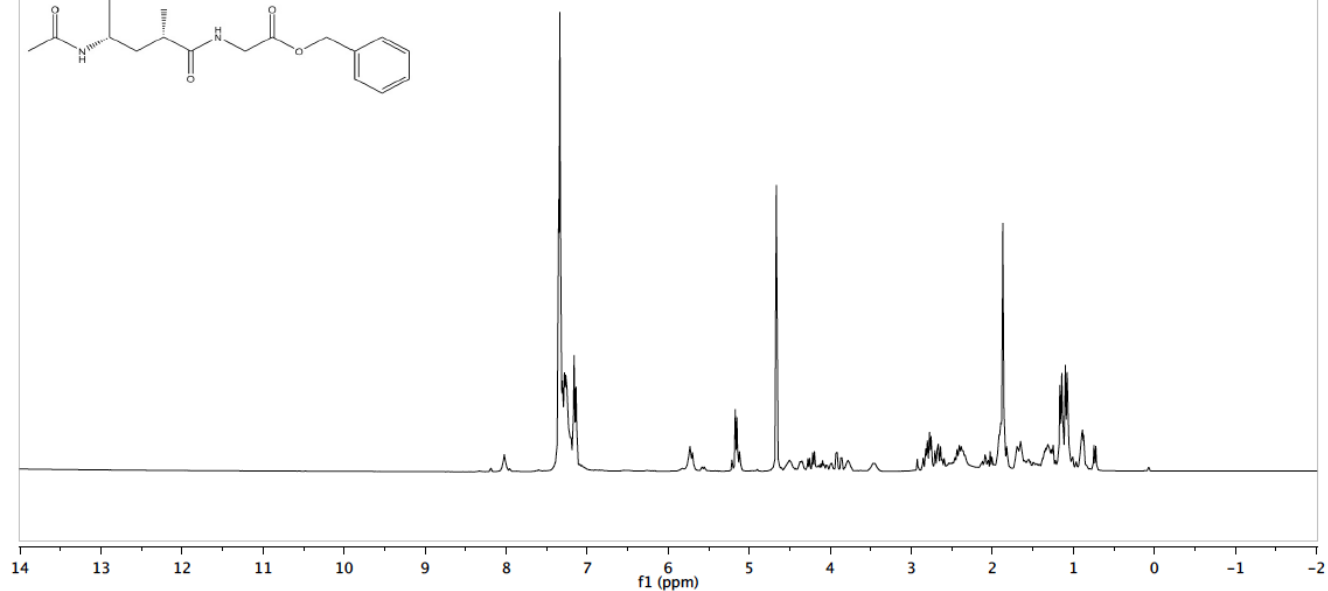
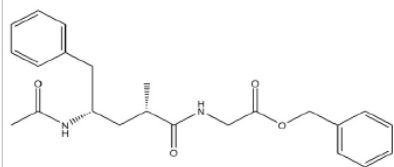
sgl445
Std Proton parameters

2S,4R-26I (precursor)



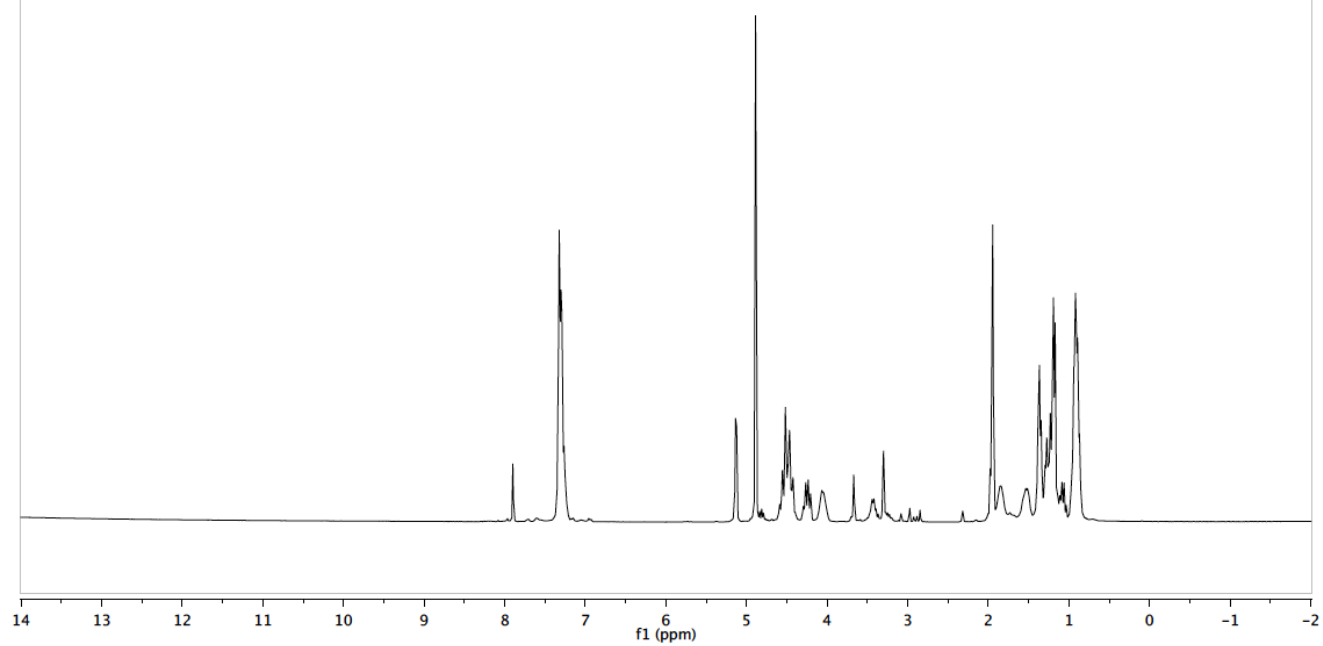
sgl446
Std Proton parameters

2R,4R-26m (precursor)



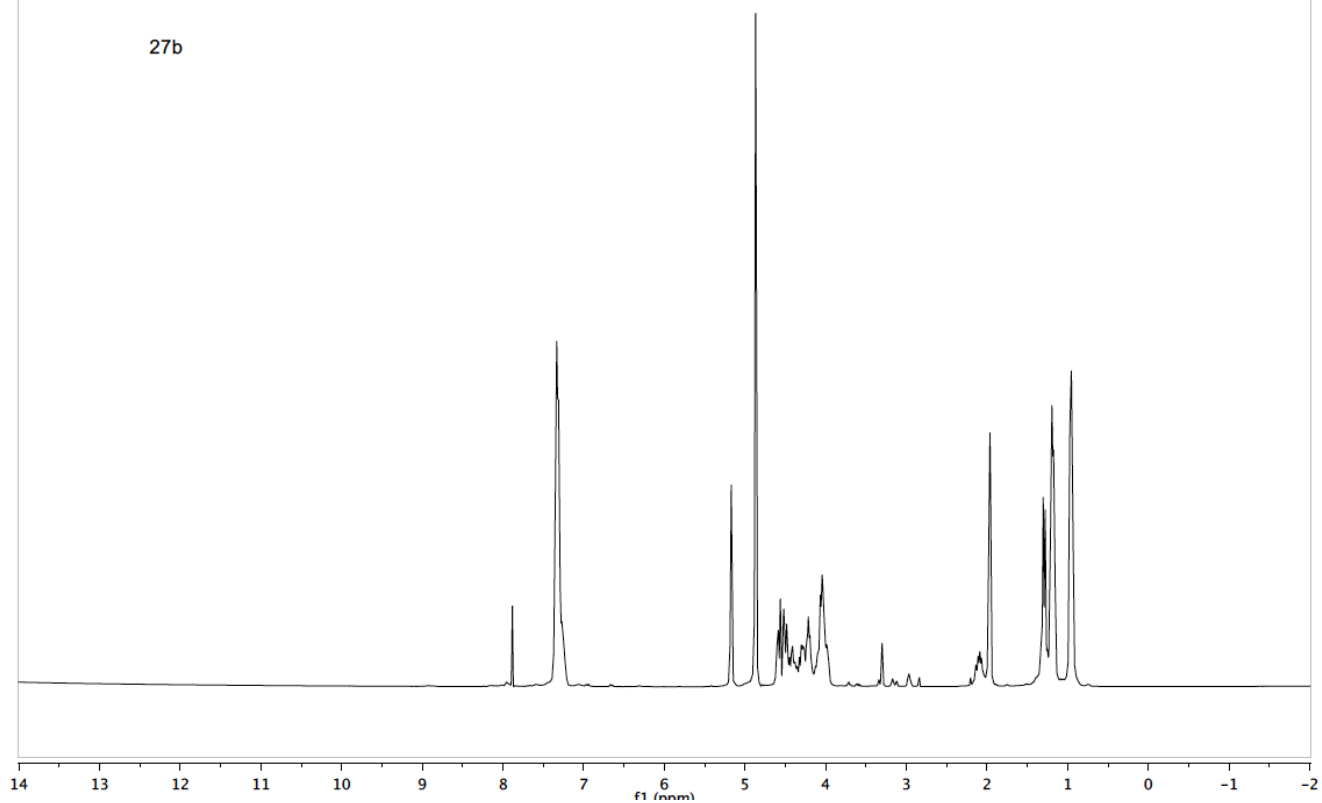
sgl354
Std Proton parameters

27a



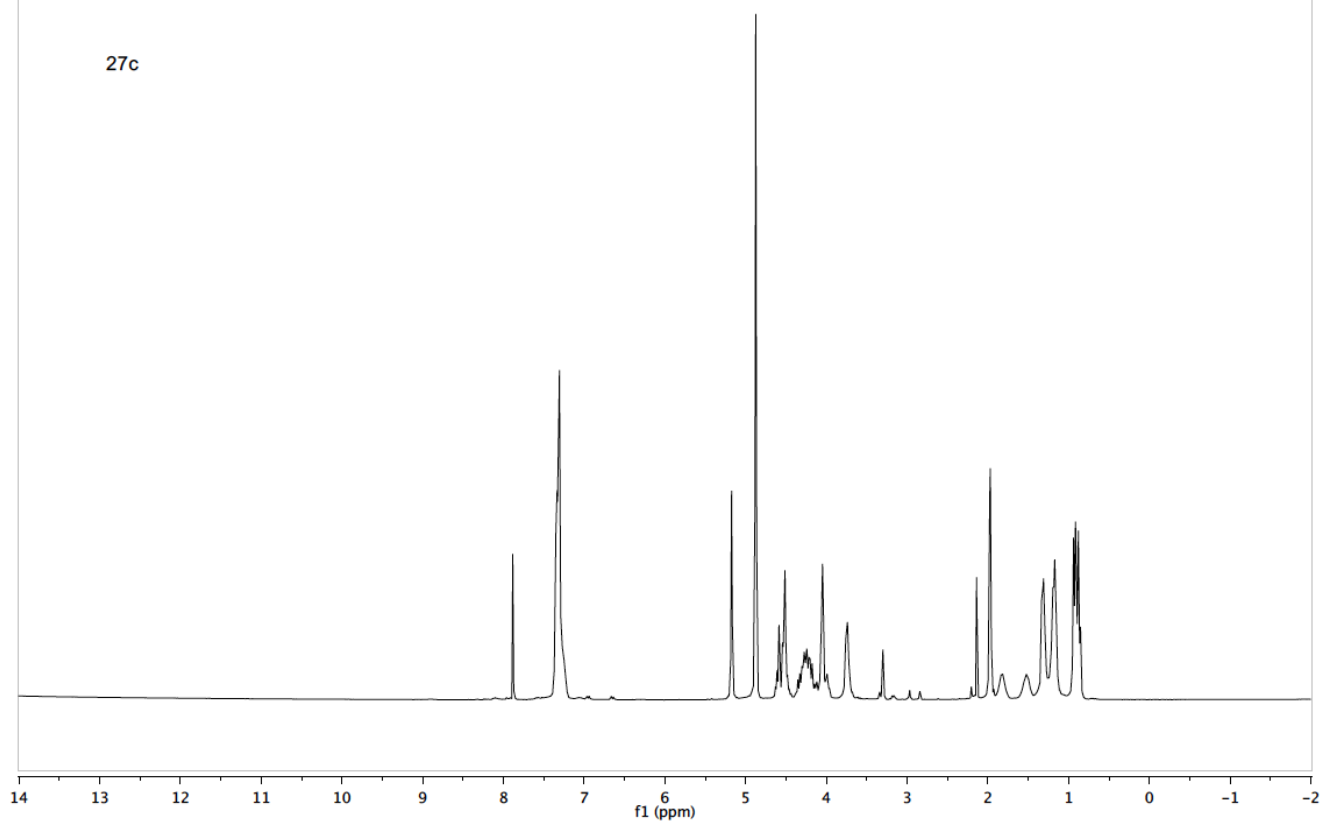
sgl333
Std Proton parameters

27b



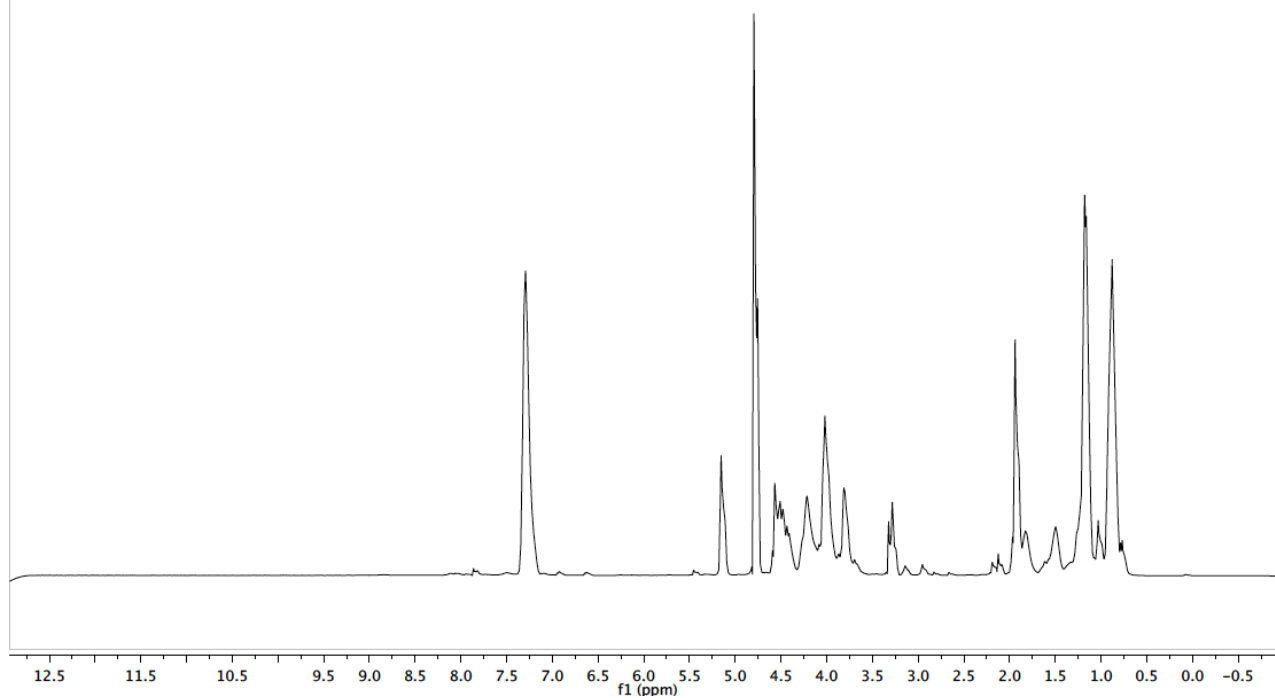
sgl332
Std Proton parameters

27c



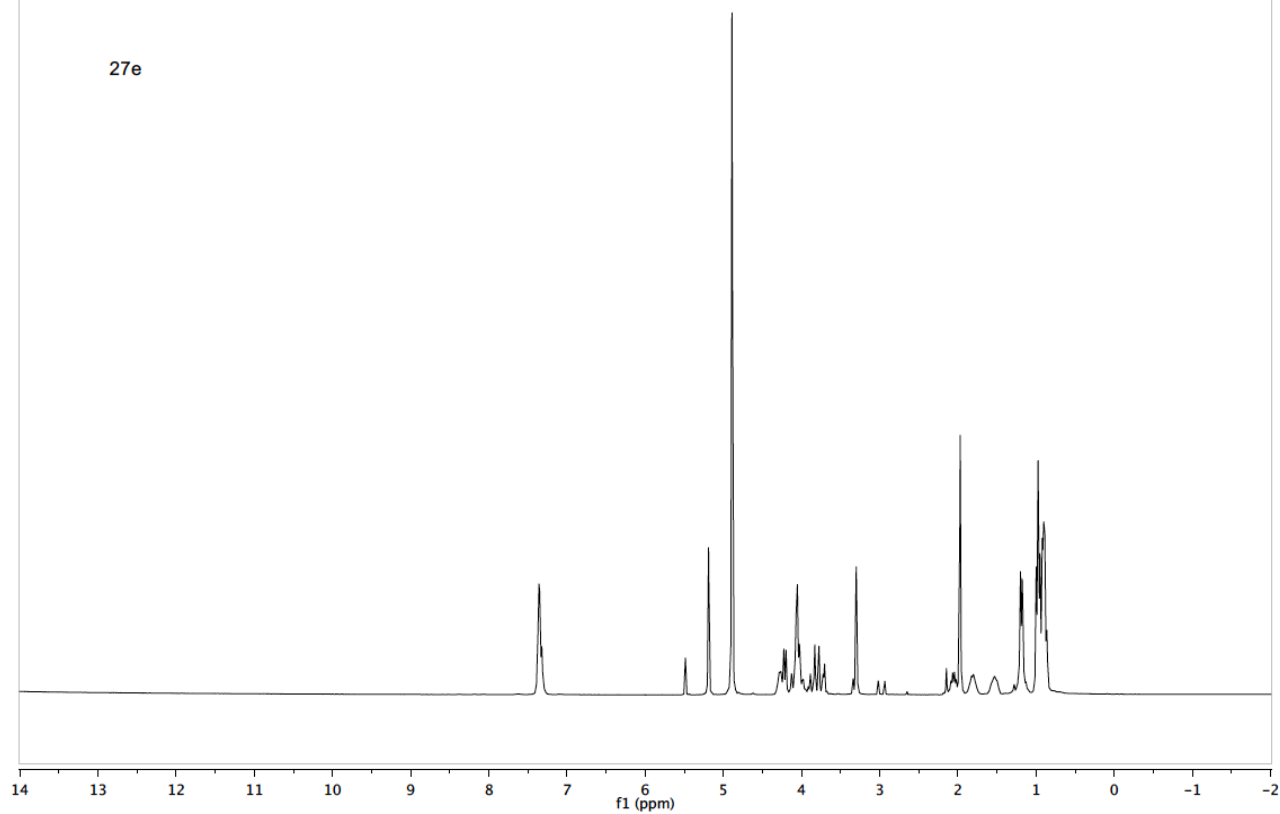
simone

27d



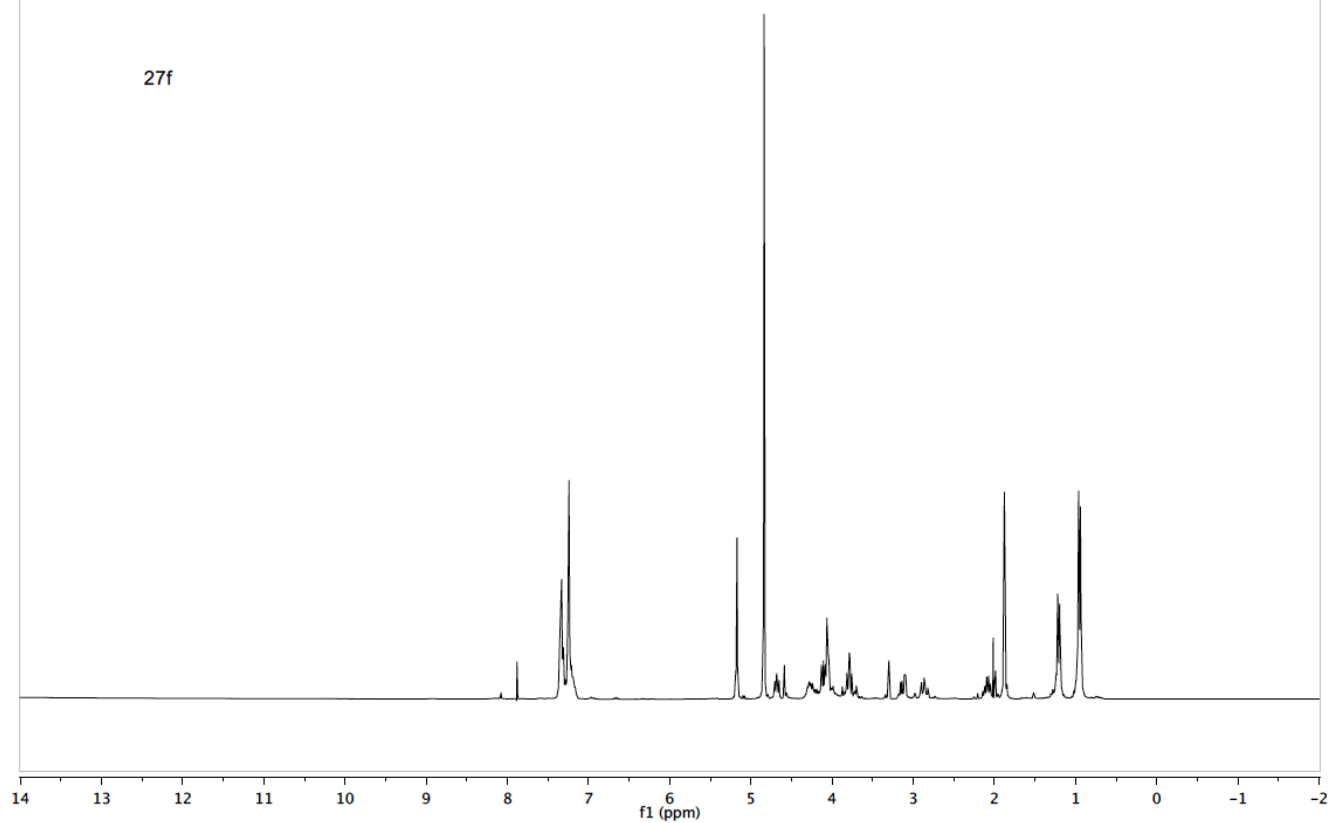
sgi308
Std Proton parameters

27e



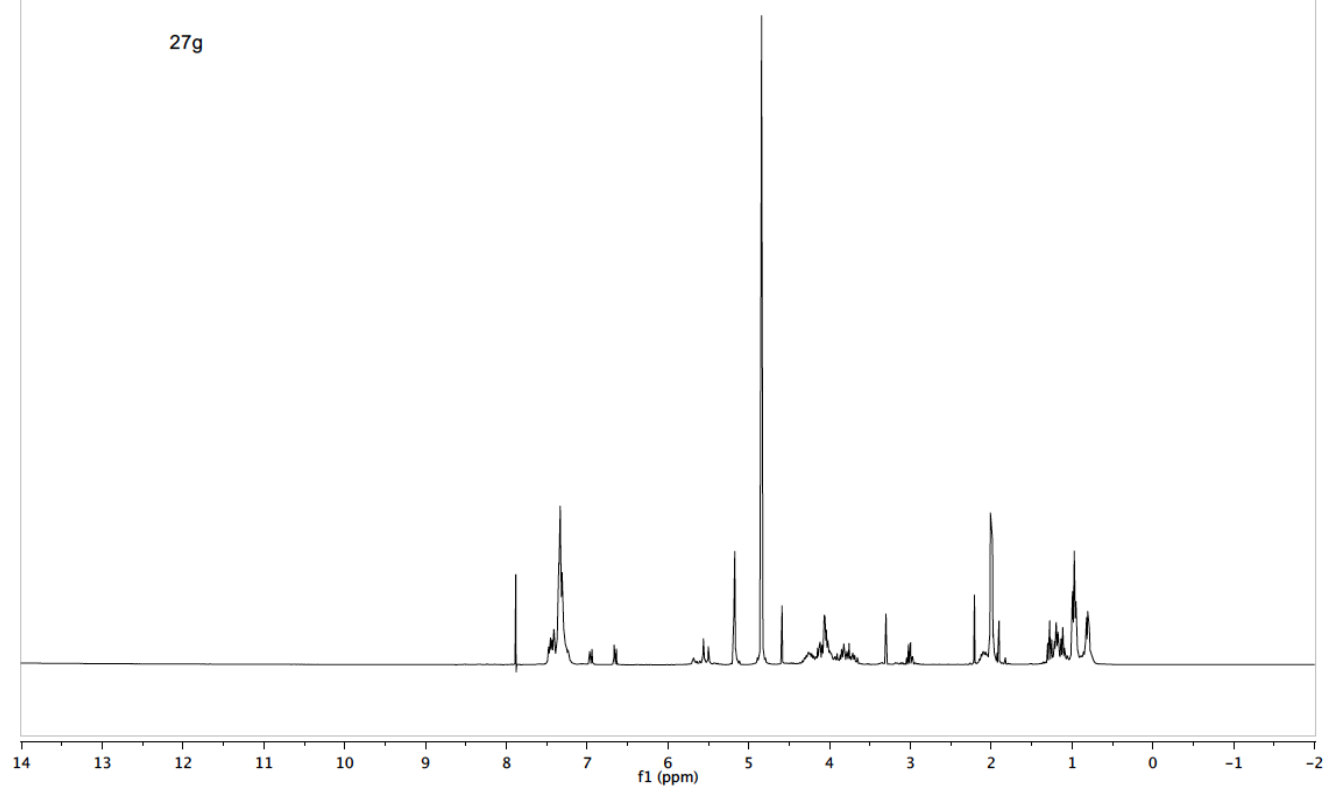
sgl362
Std Proton parameters

27f



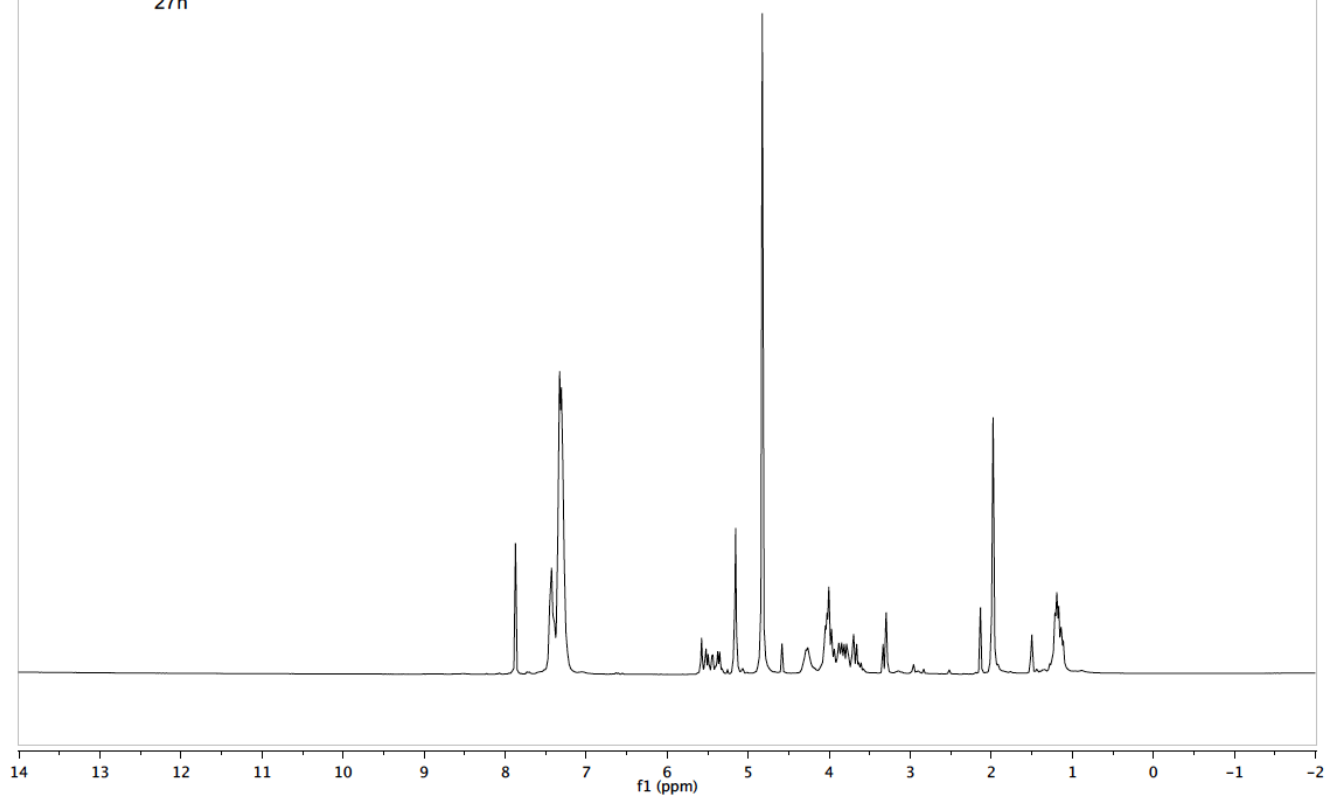
sgl364
Std Proton parameters

27g



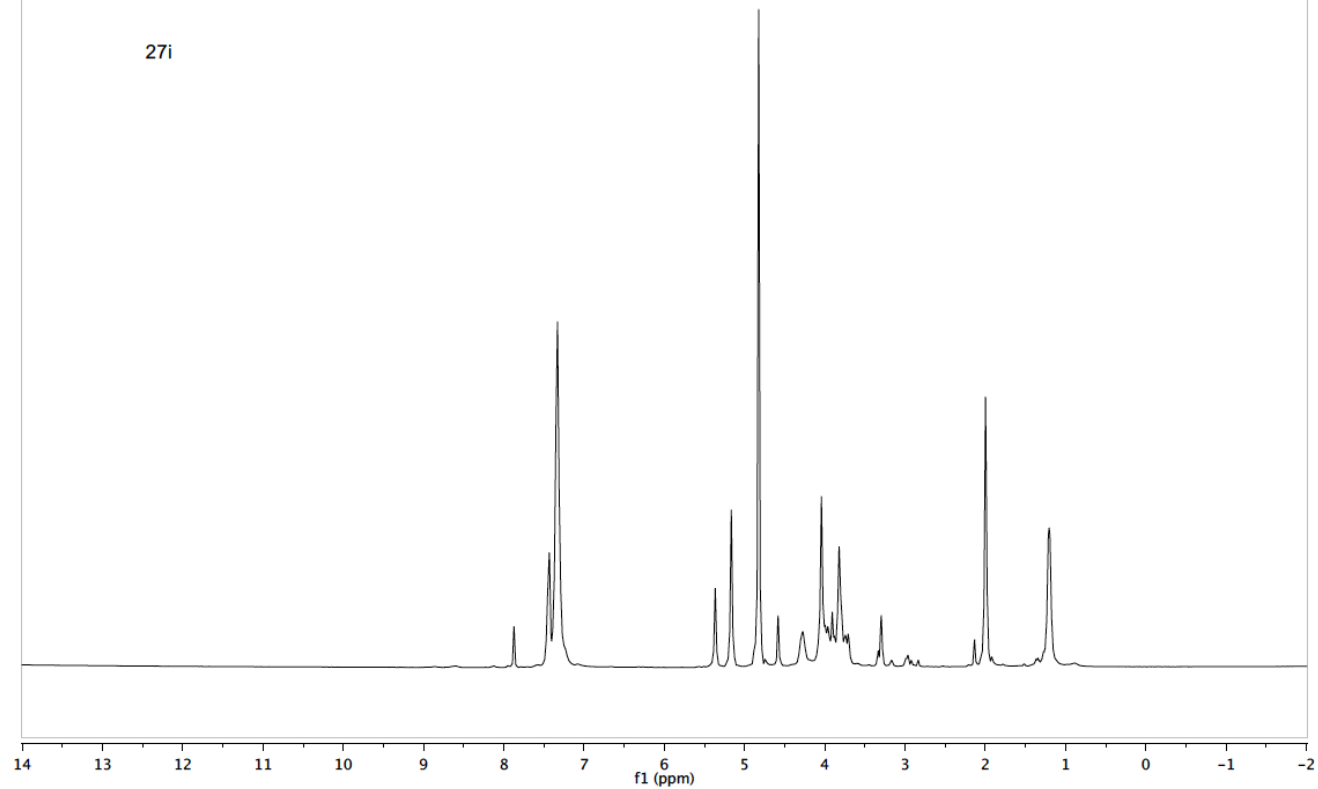
sgl423
Std Proton parameters

27h



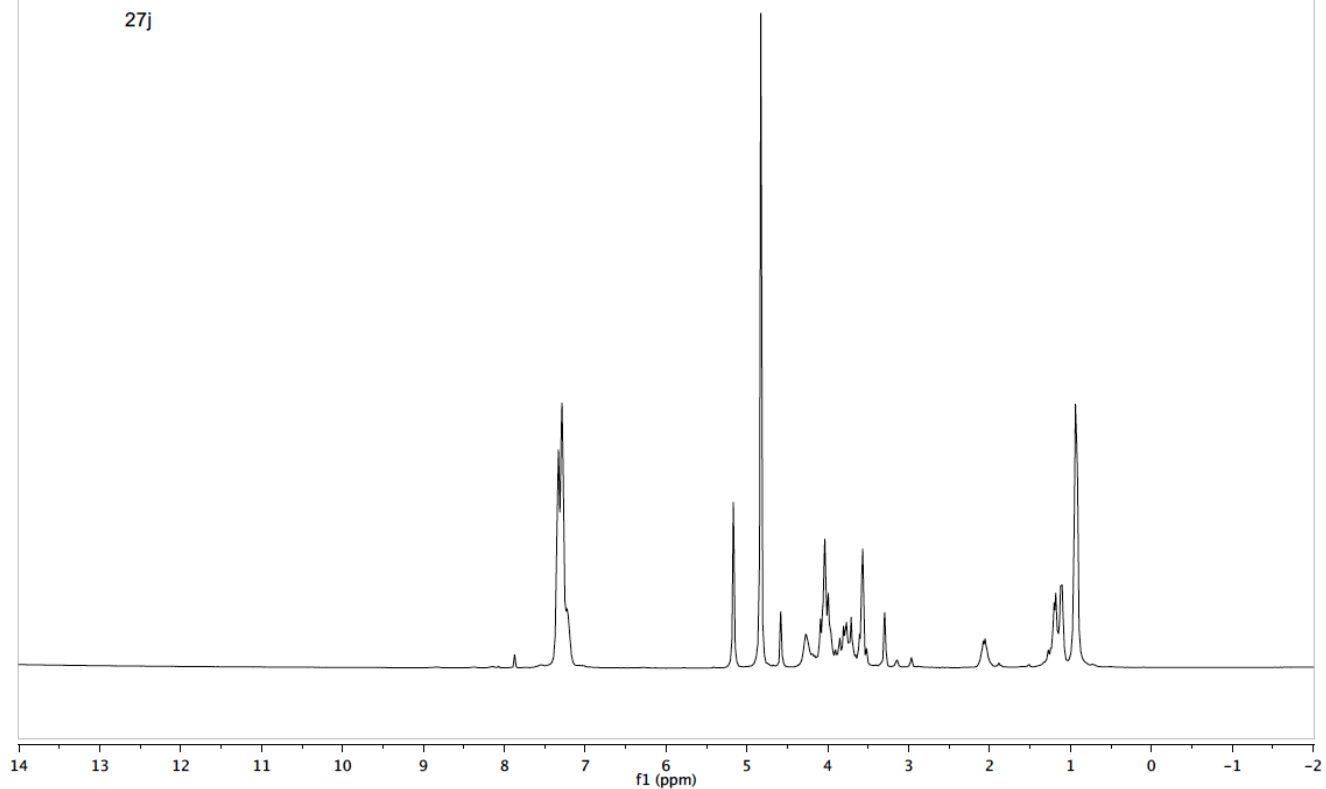
sgl424
Std Proton parameters

27i



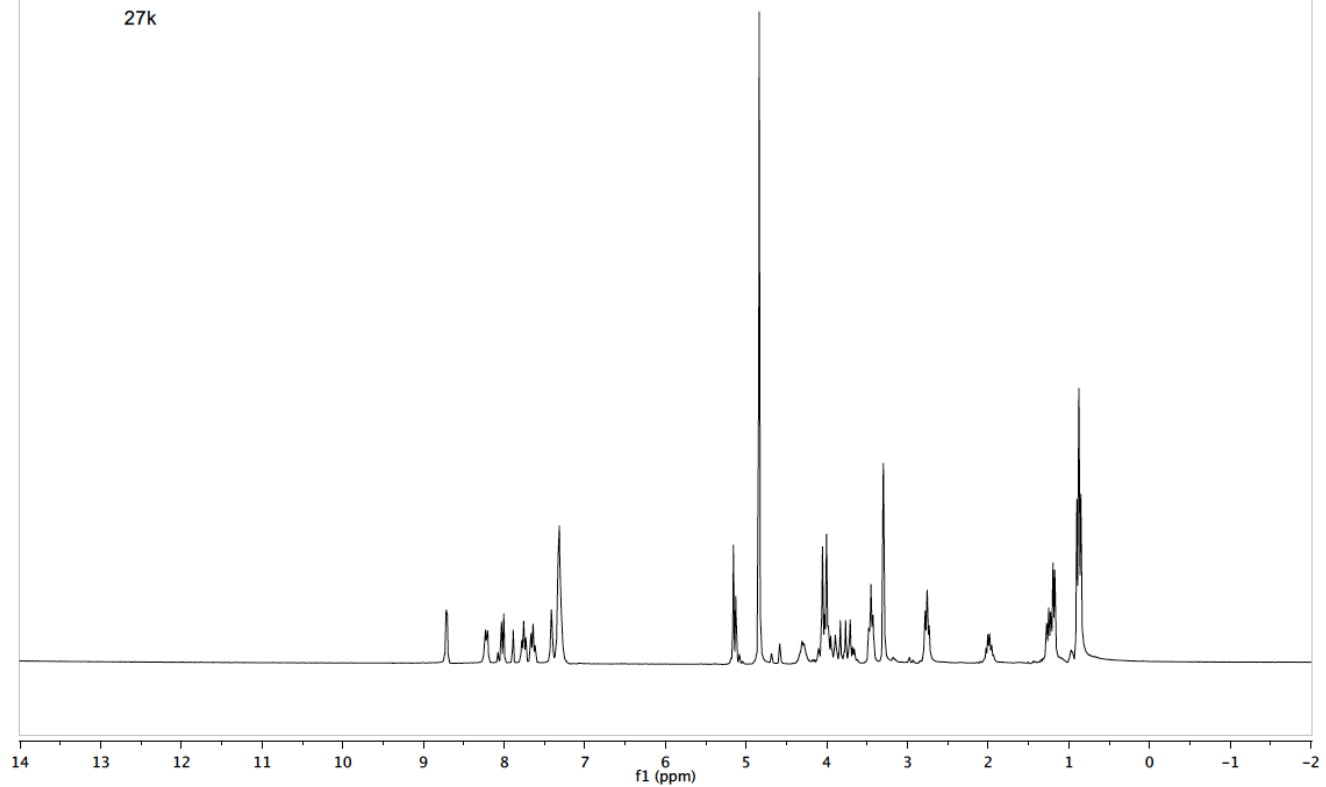
sgl425
Std Proton parameters

27j



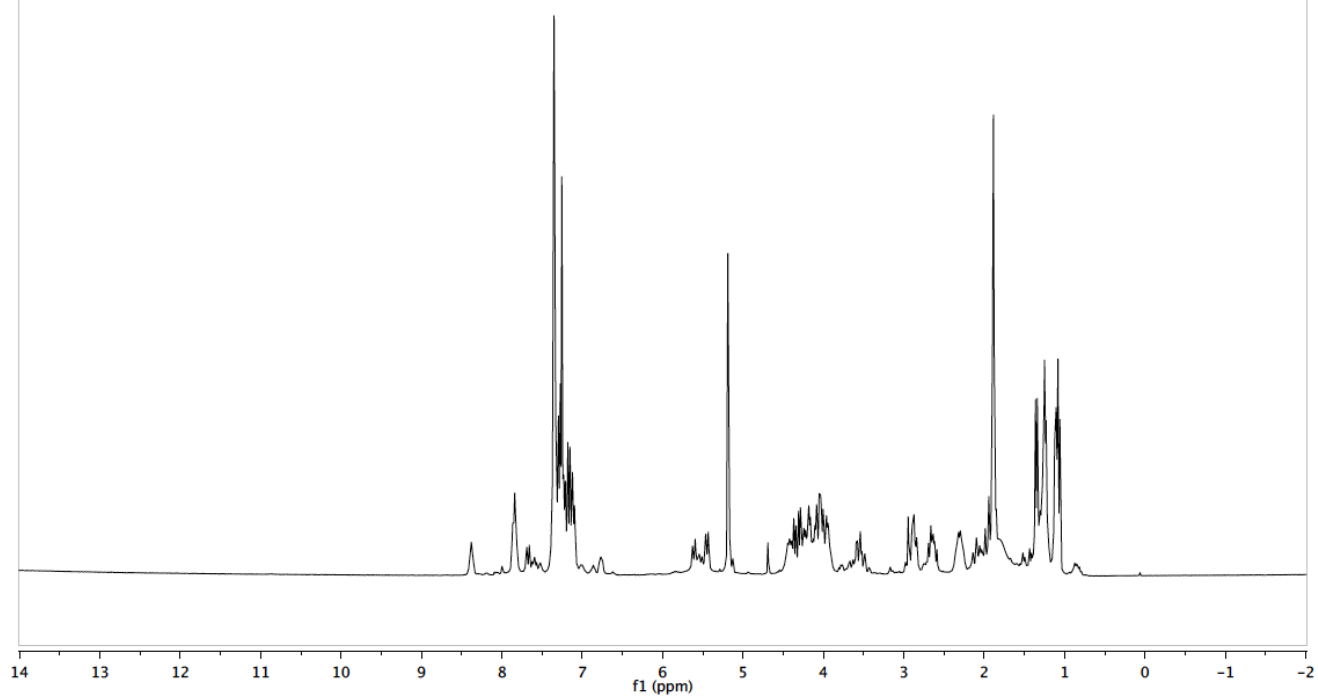
sgl418
Std Proton parameters

27k



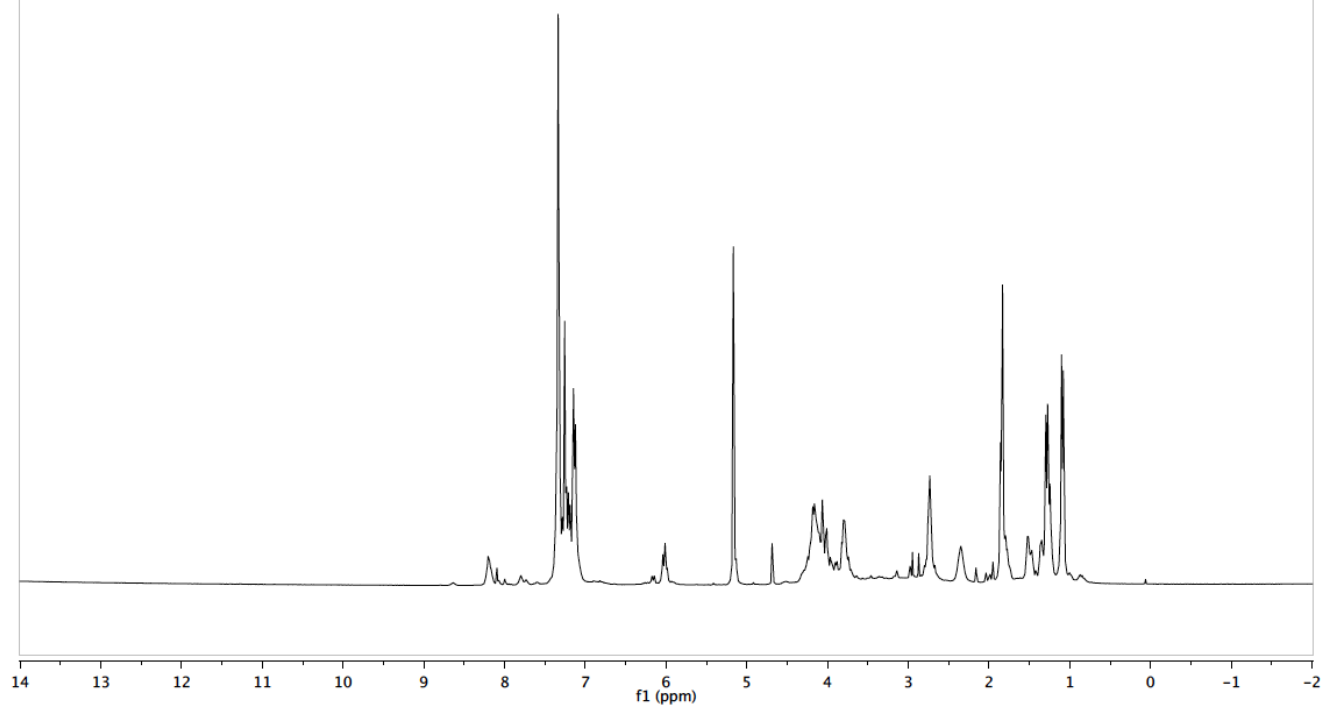
sgl448
Std Proton parameters

27l



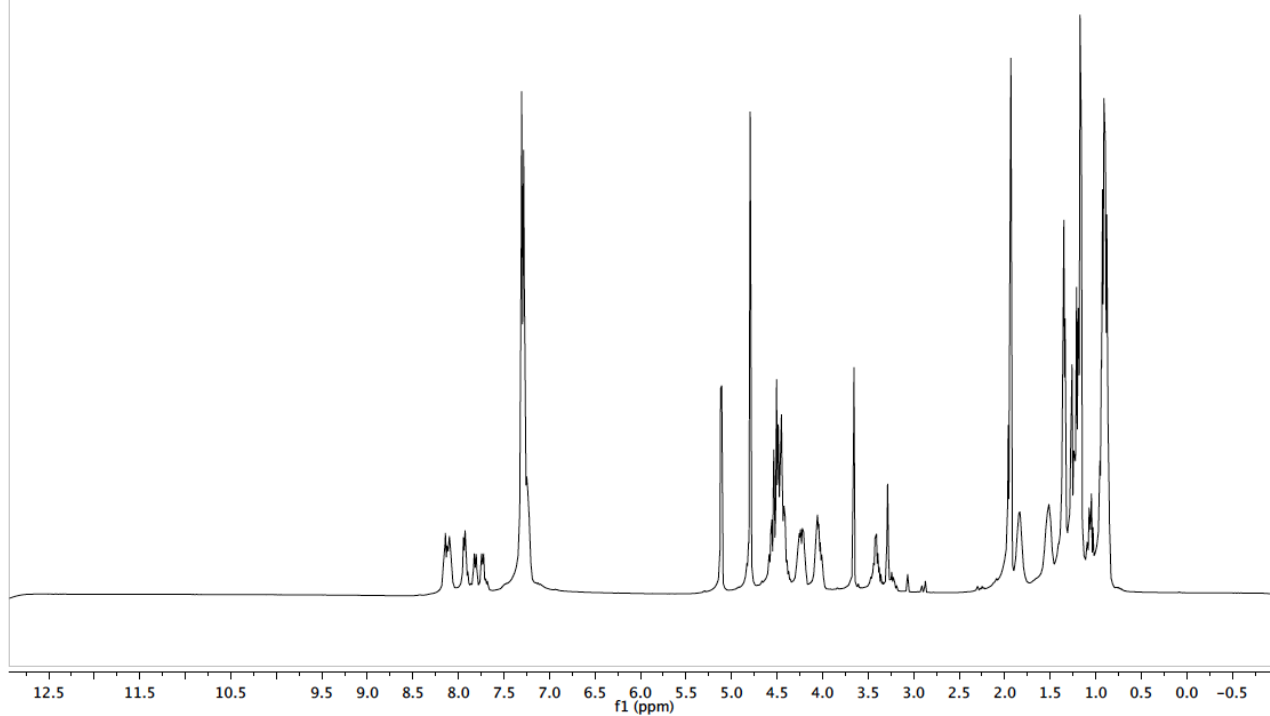
sgl447
Std Proton parameters

27m



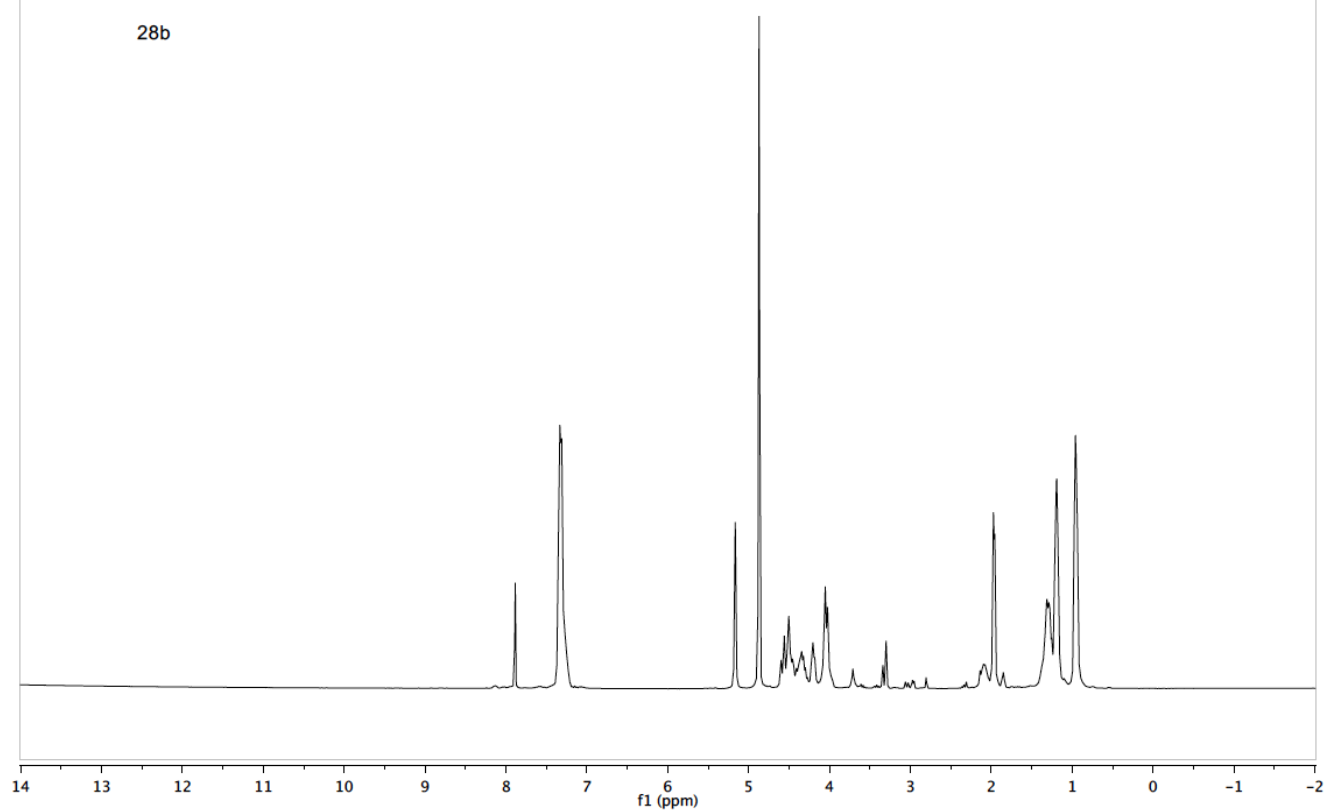
simone

28a



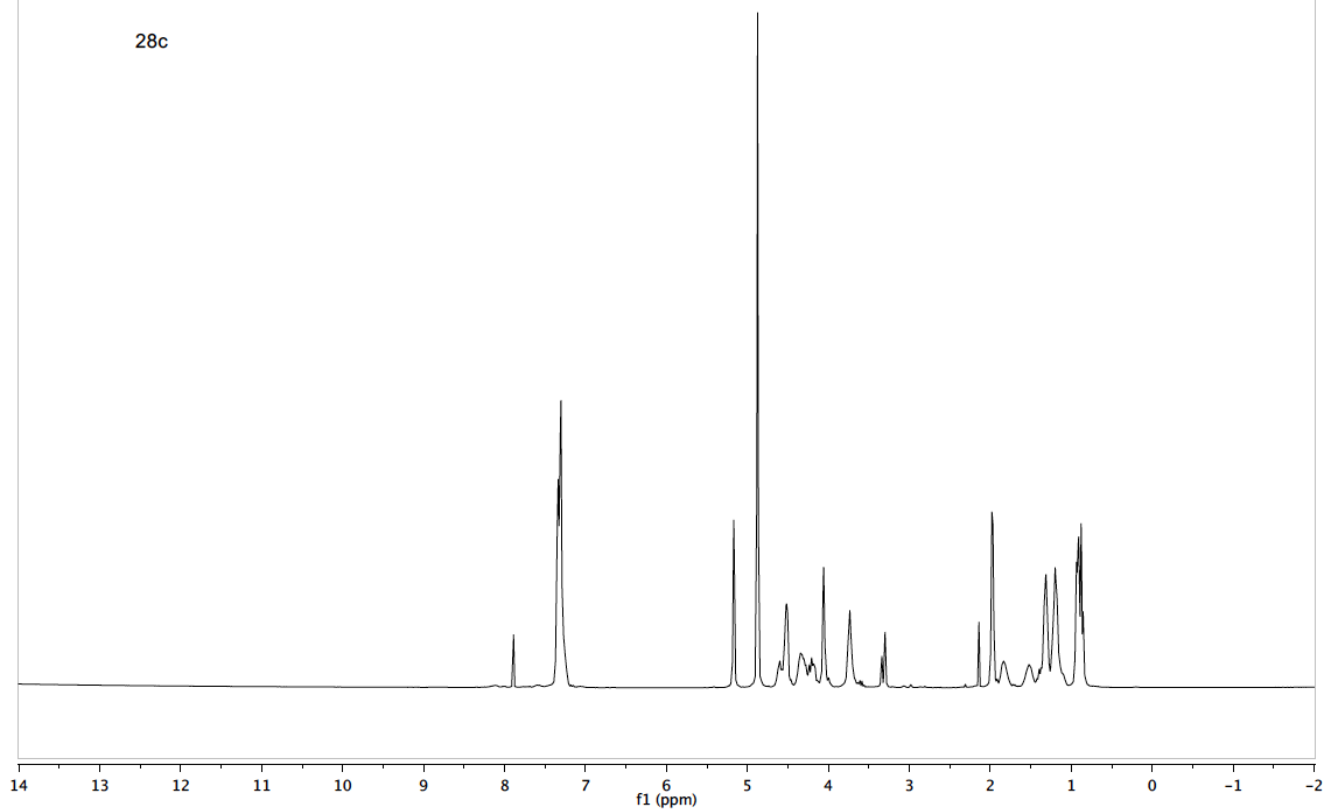
sgi339
Std Proton parameters

28b



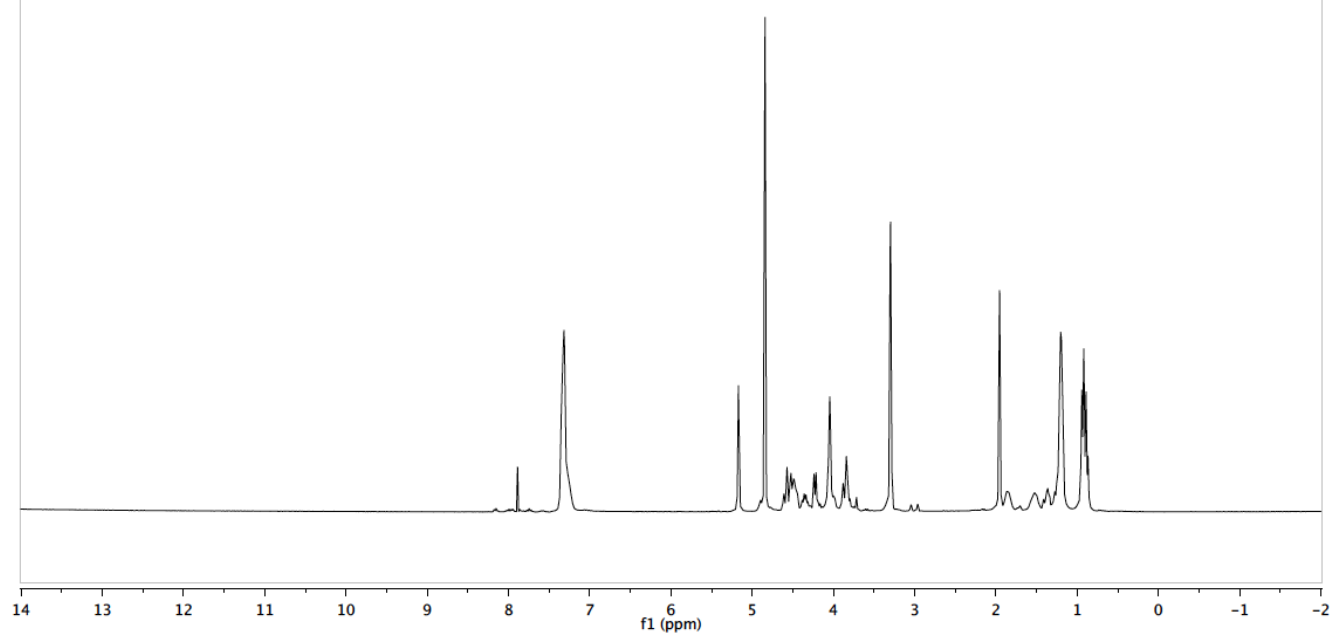
sgi338
Std Proton parameters

28c



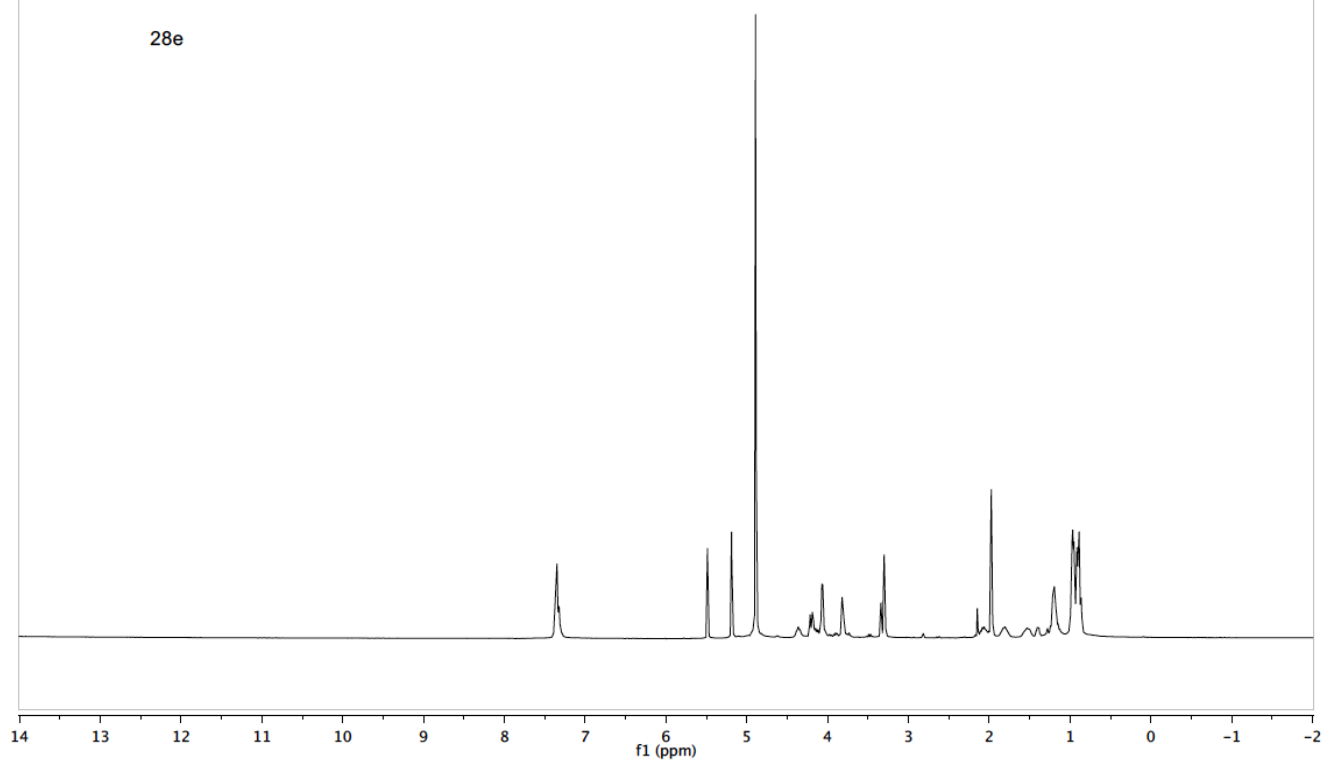
sgi474_NF2140
Std Proton parameters

28d



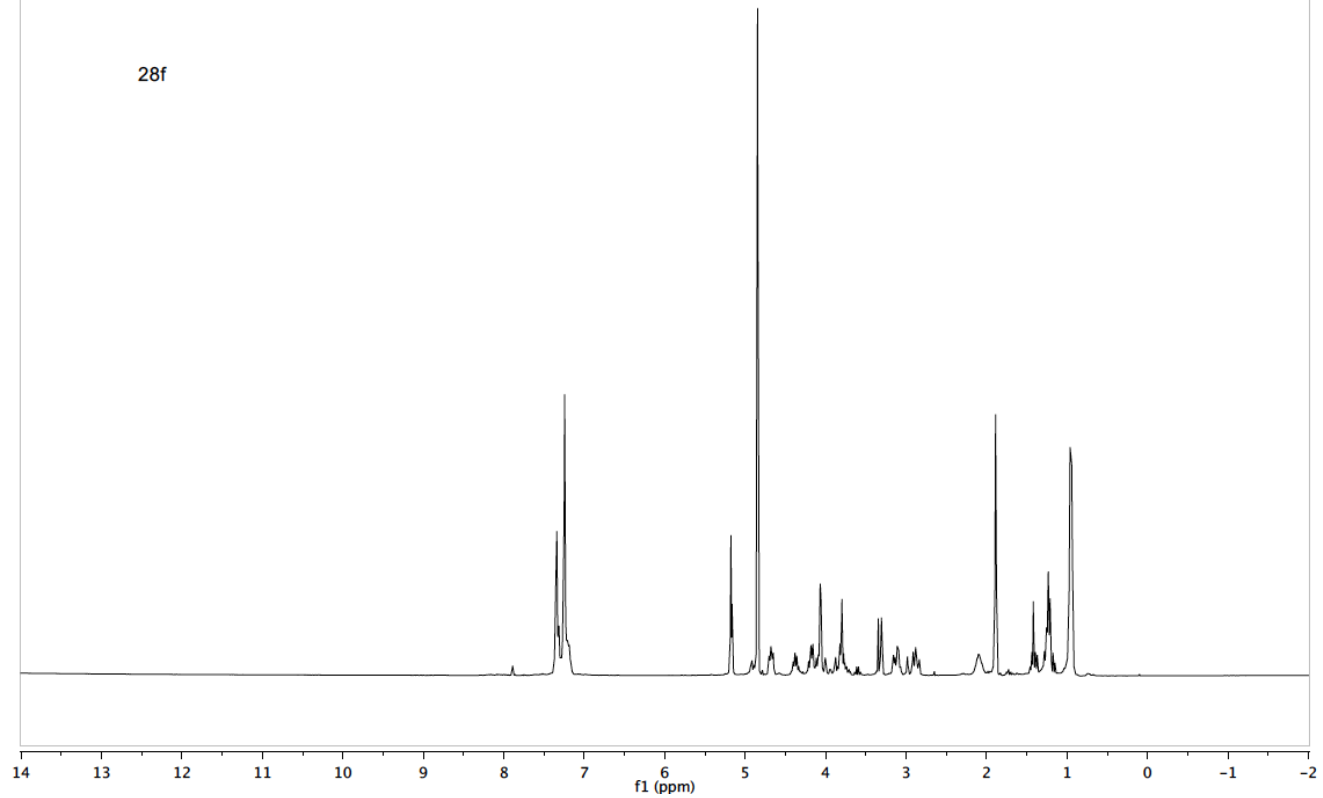
sgl309
Std Proton parameters

28e



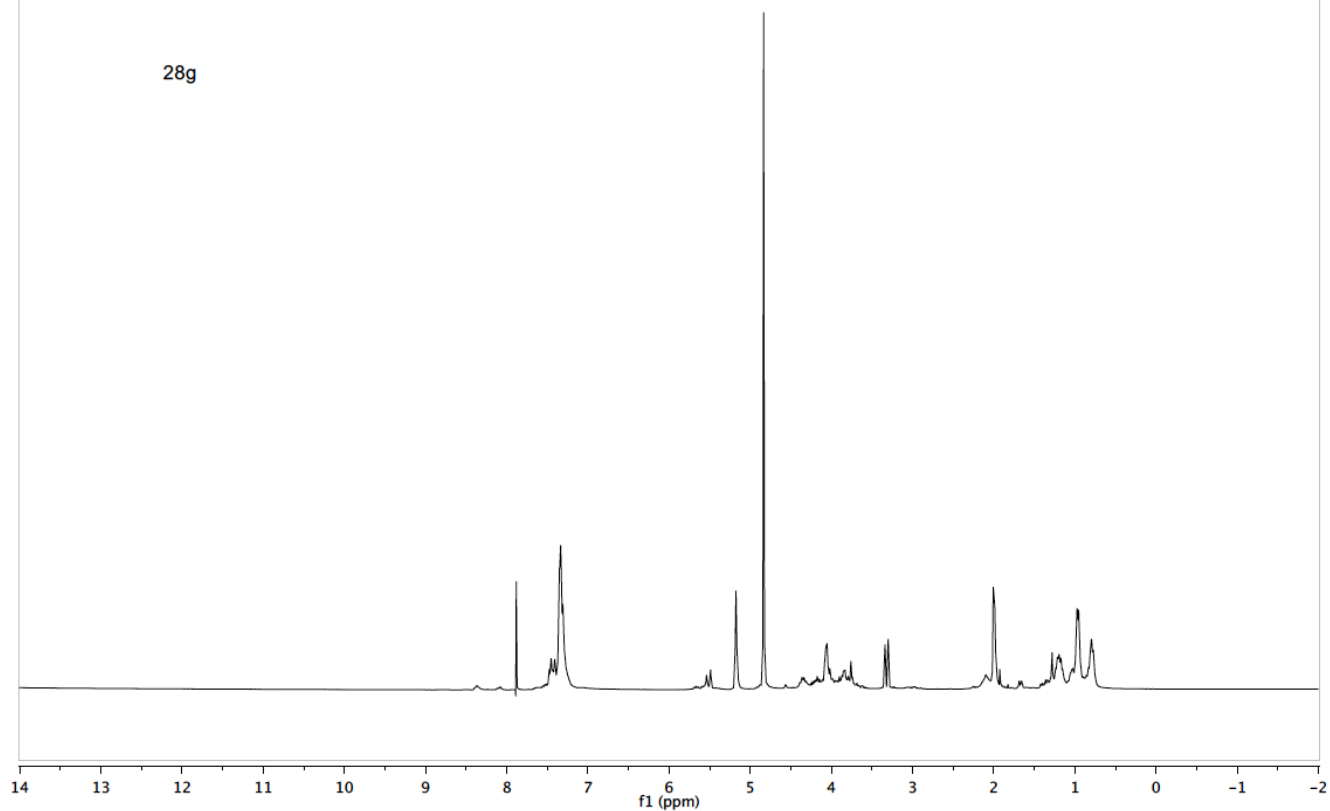
sgl462
Std Proton parameters

28f



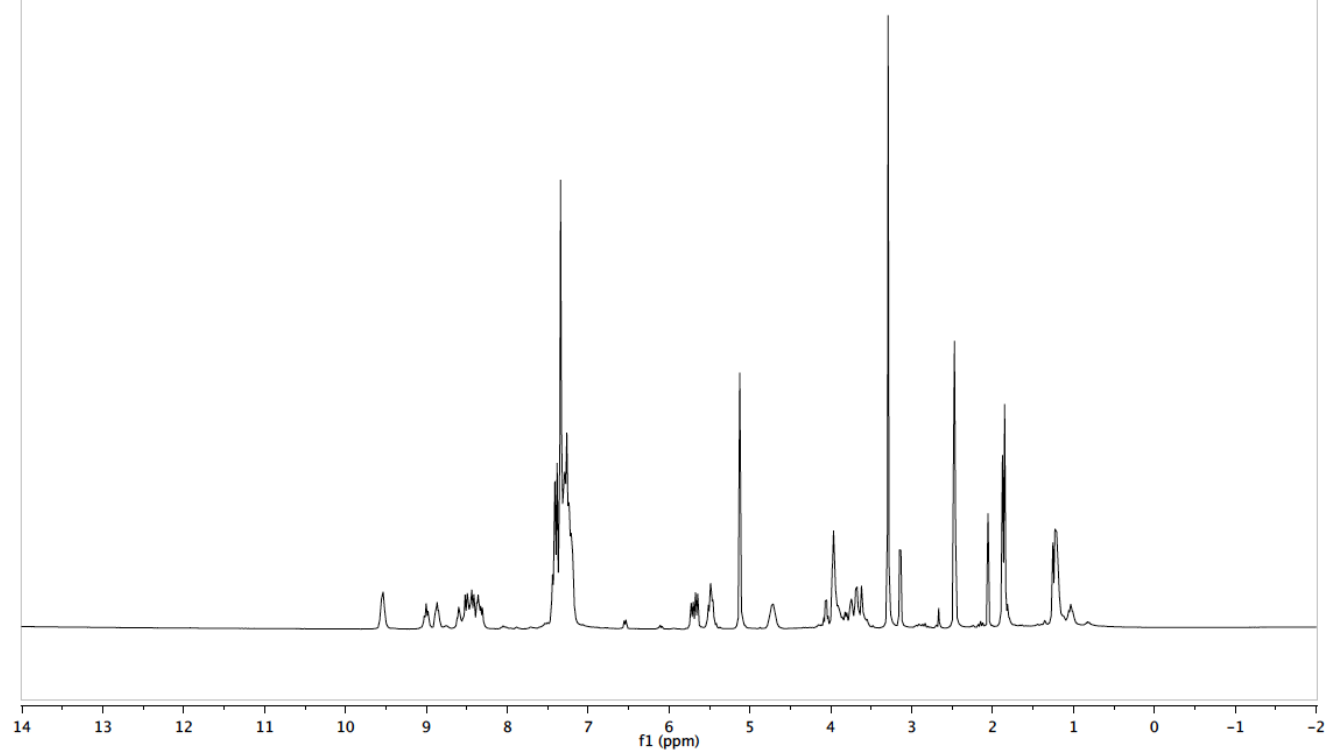
sgl366
Std Proton parameters

28g



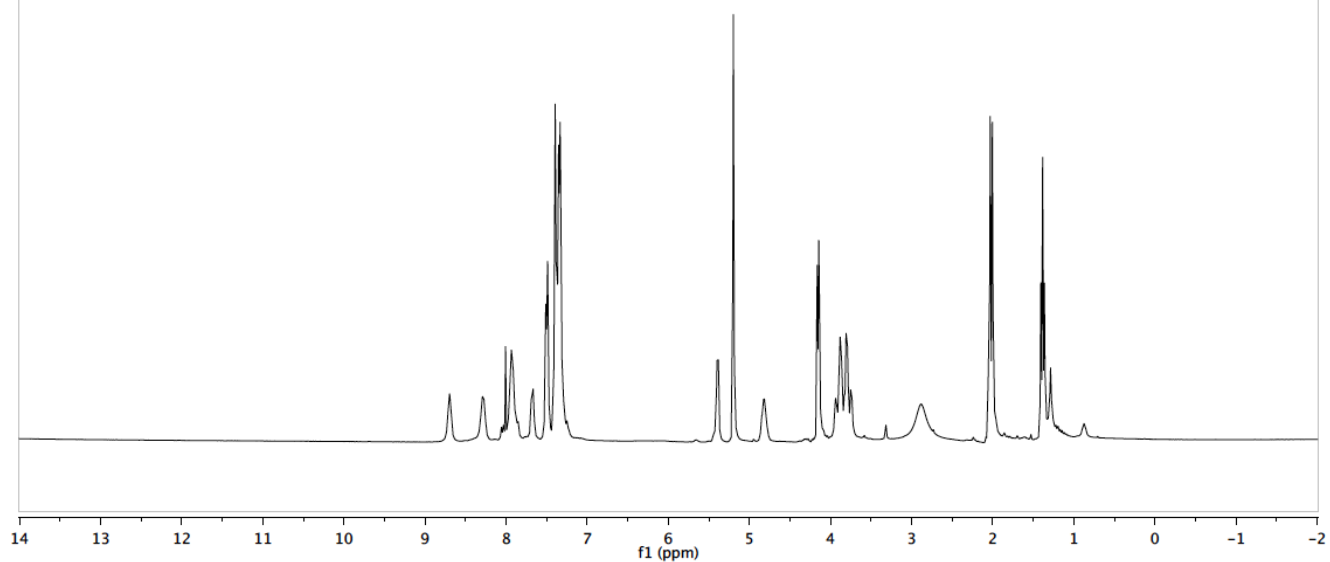
sgl428_DMSO
Std Proton parameters

28h



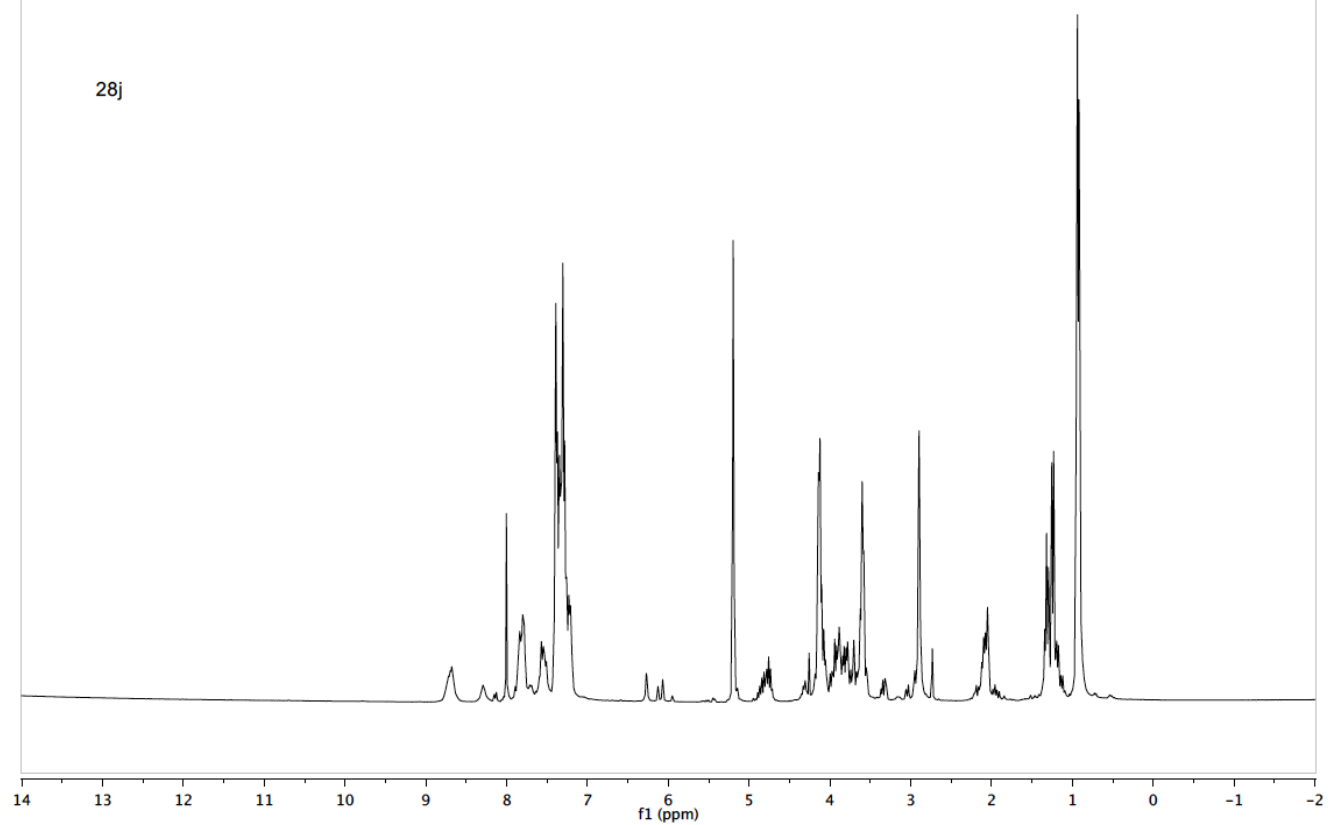
sgl426
Std Proton parameters

28i

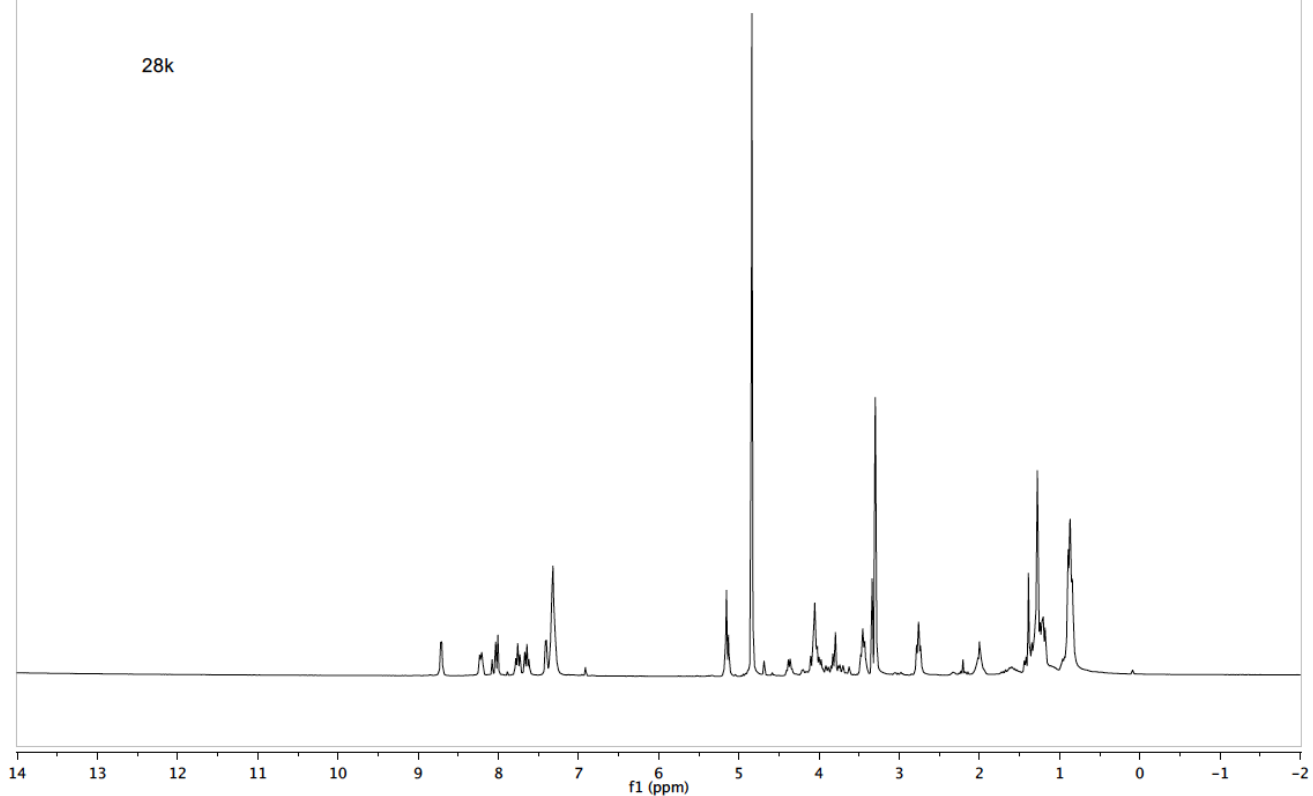


sgl427
Std Proton parameters

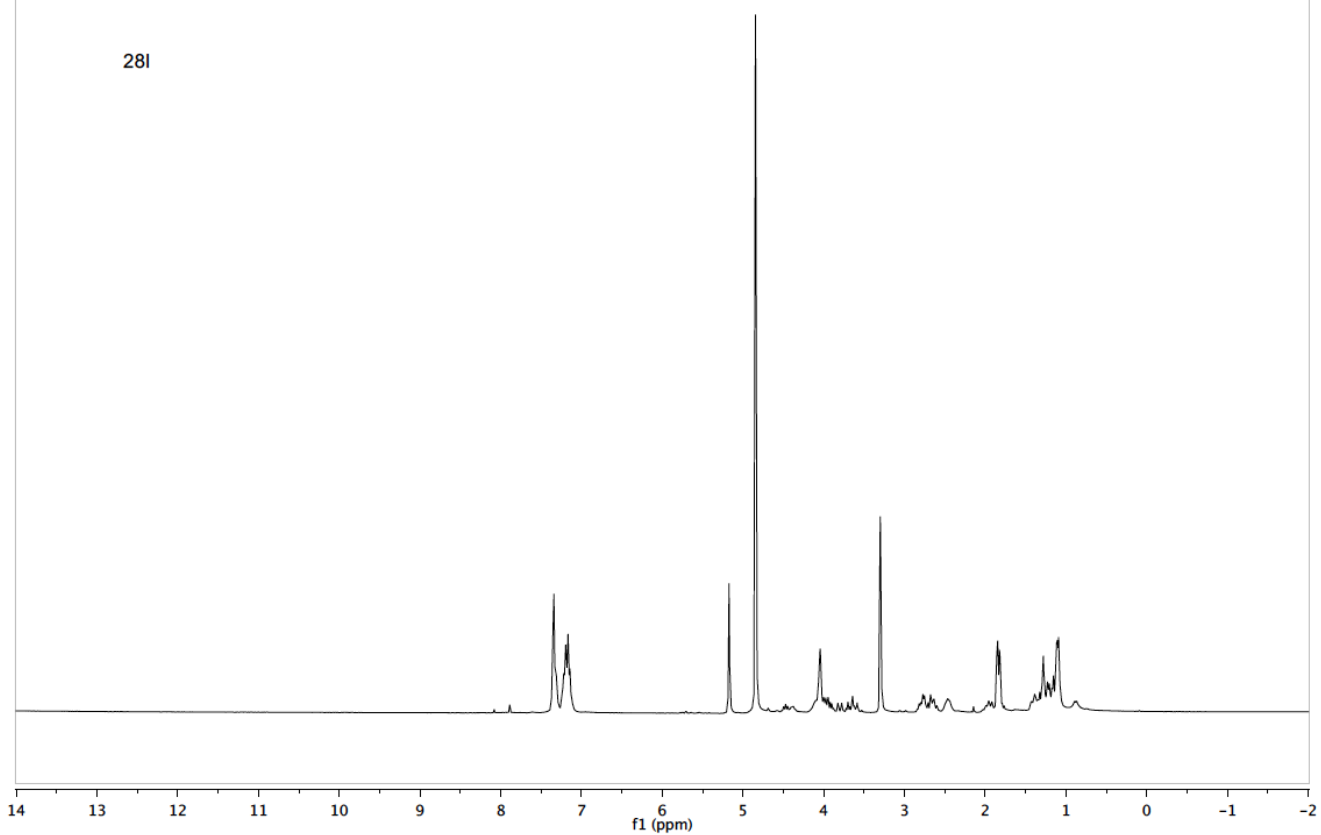
28j



sgl419
Std Proton parameters

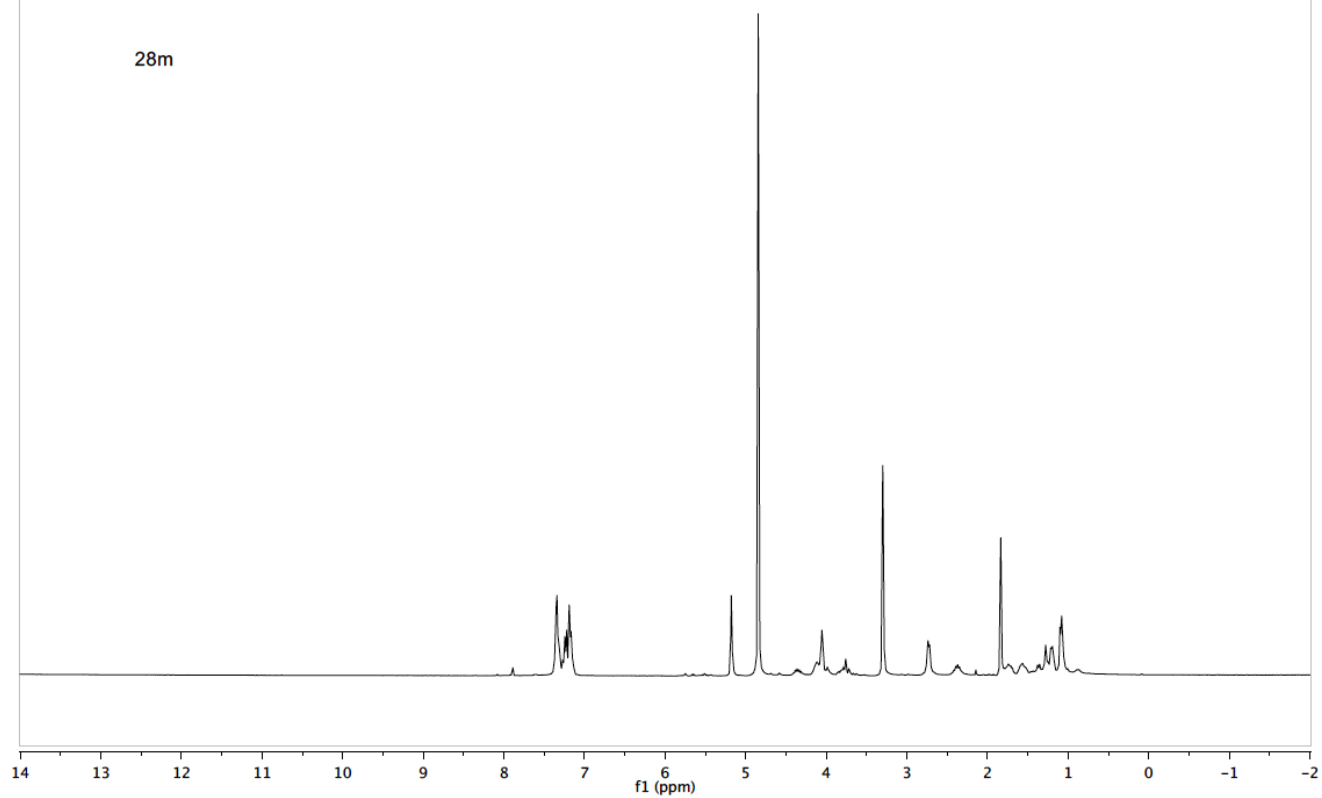


sgl449
Std Proton parameters



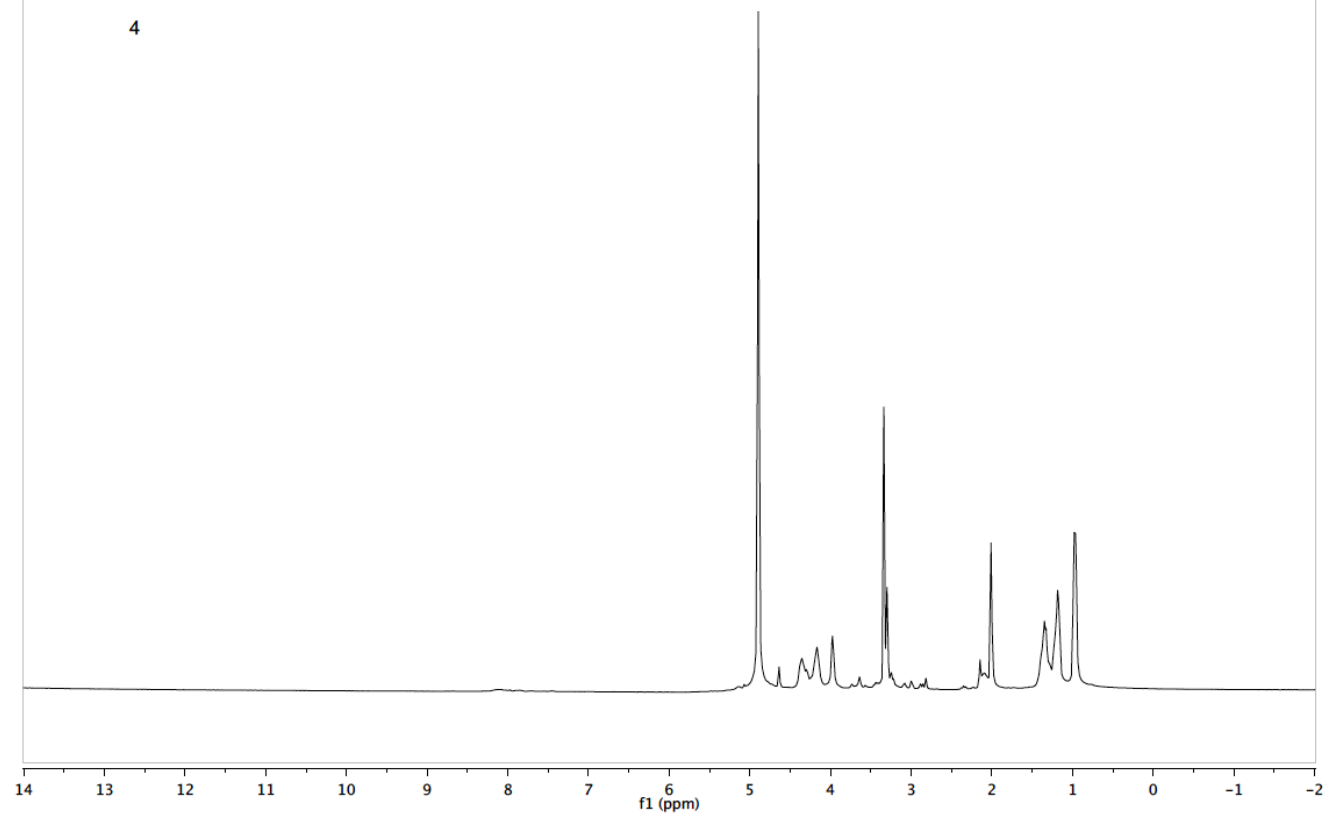
sgi450
Std Proton parameters

28m



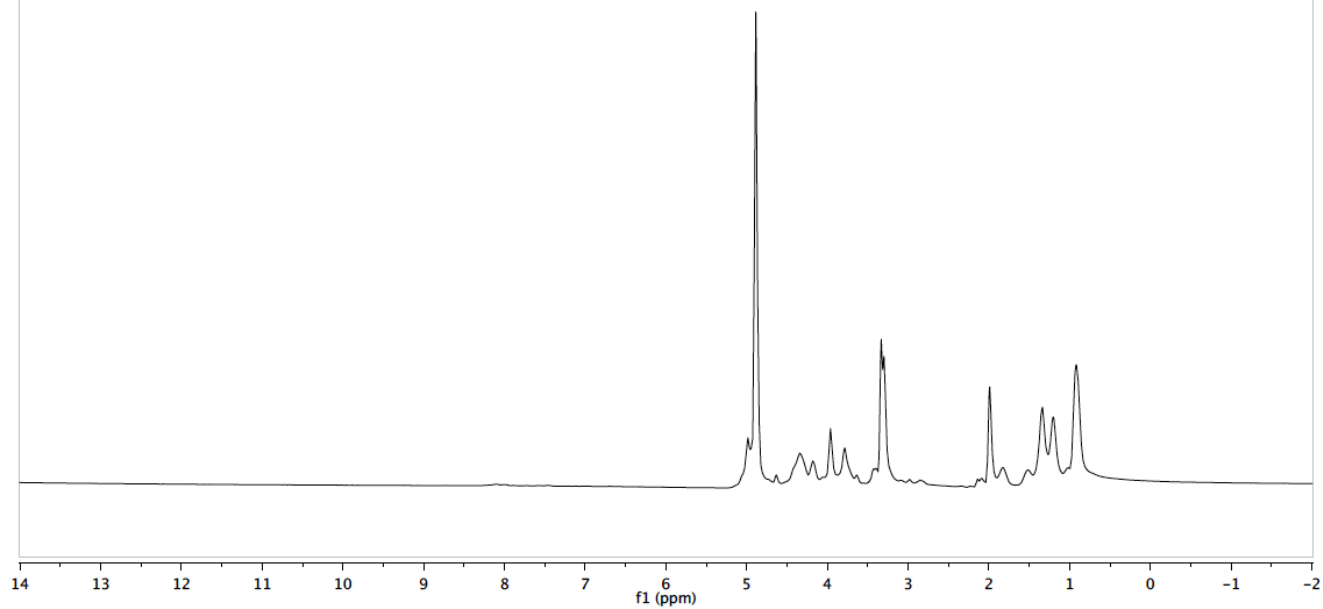
sgi346
Std Proton parameters

4



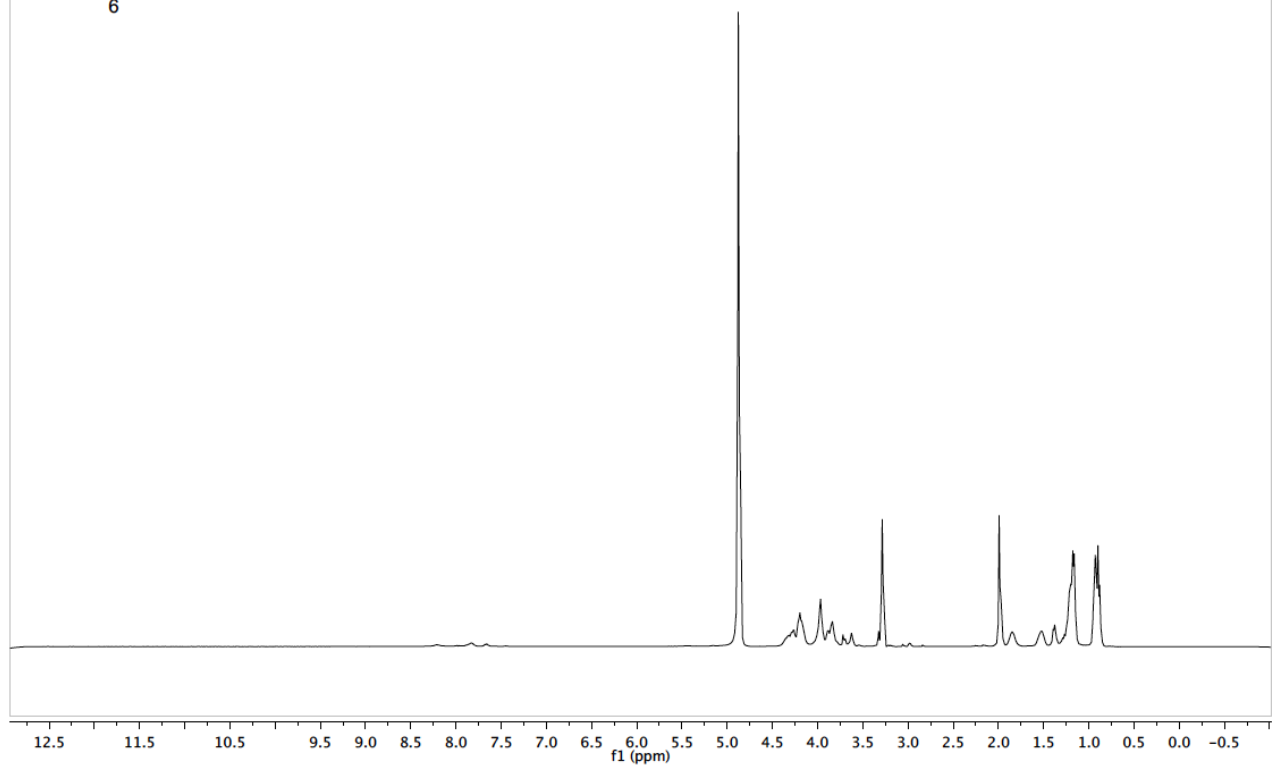
sgl347
Std Proton parameters

5



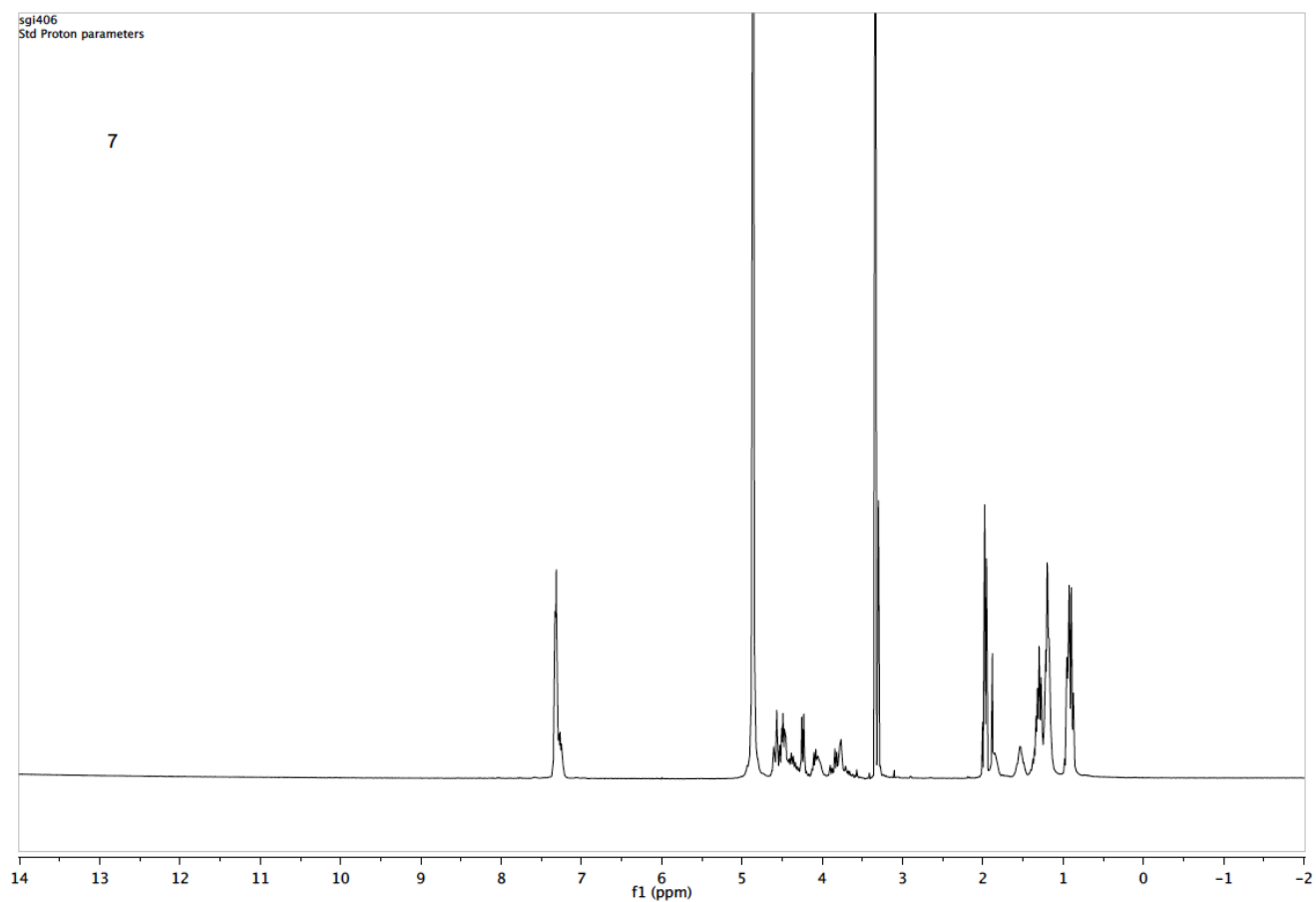
simone

6



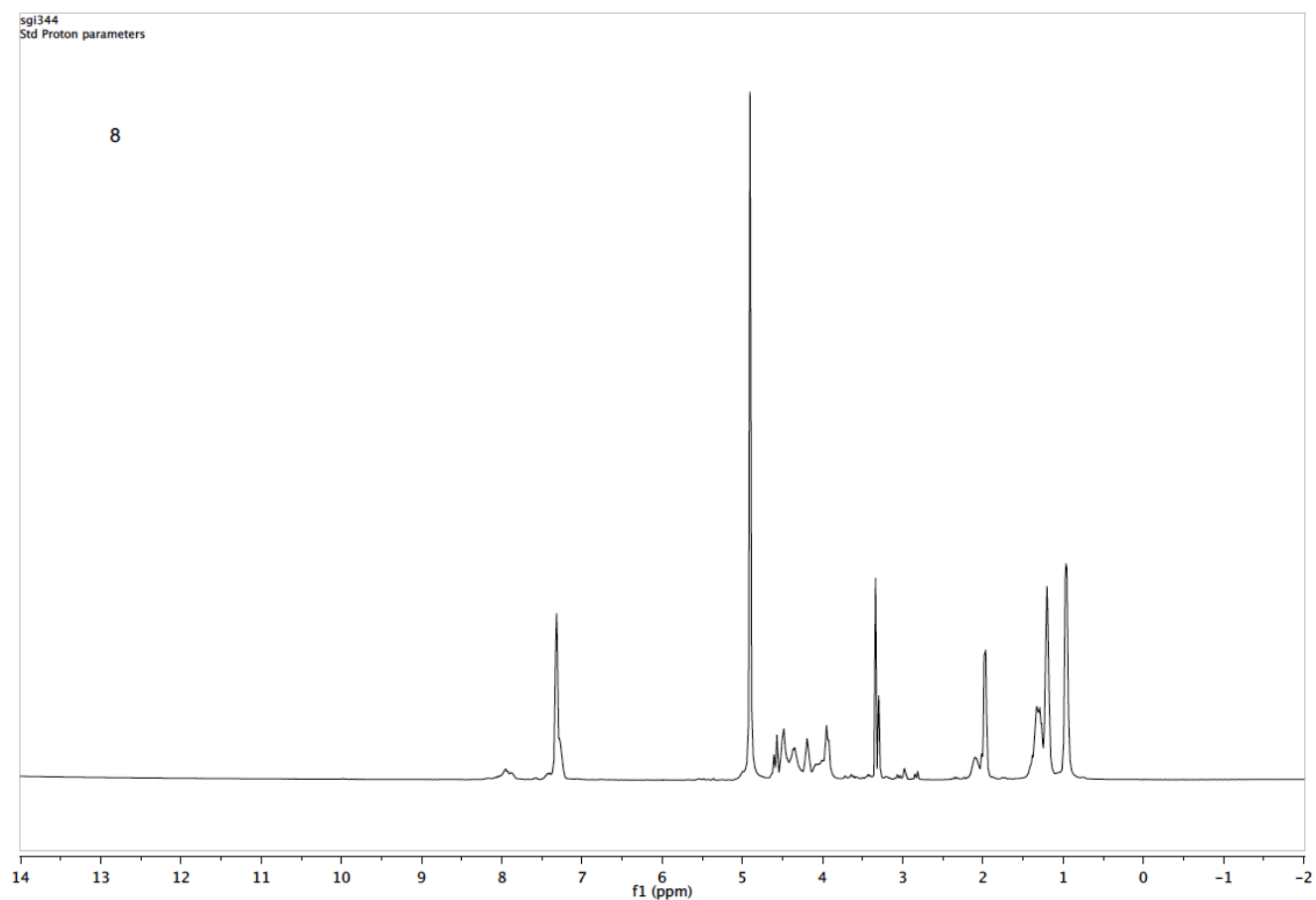
sgl406
Std Proton parameters

7

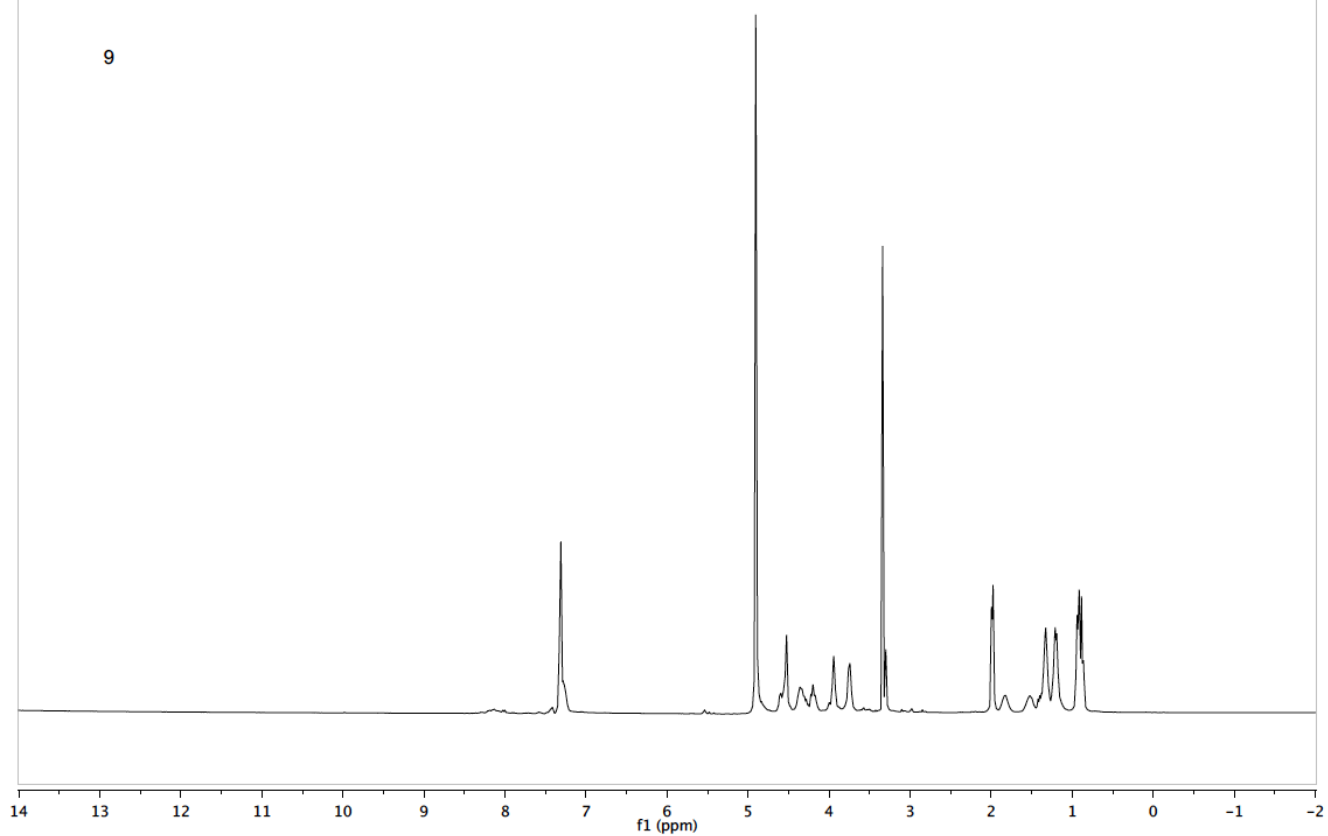


sgl344
Std Proton parameters

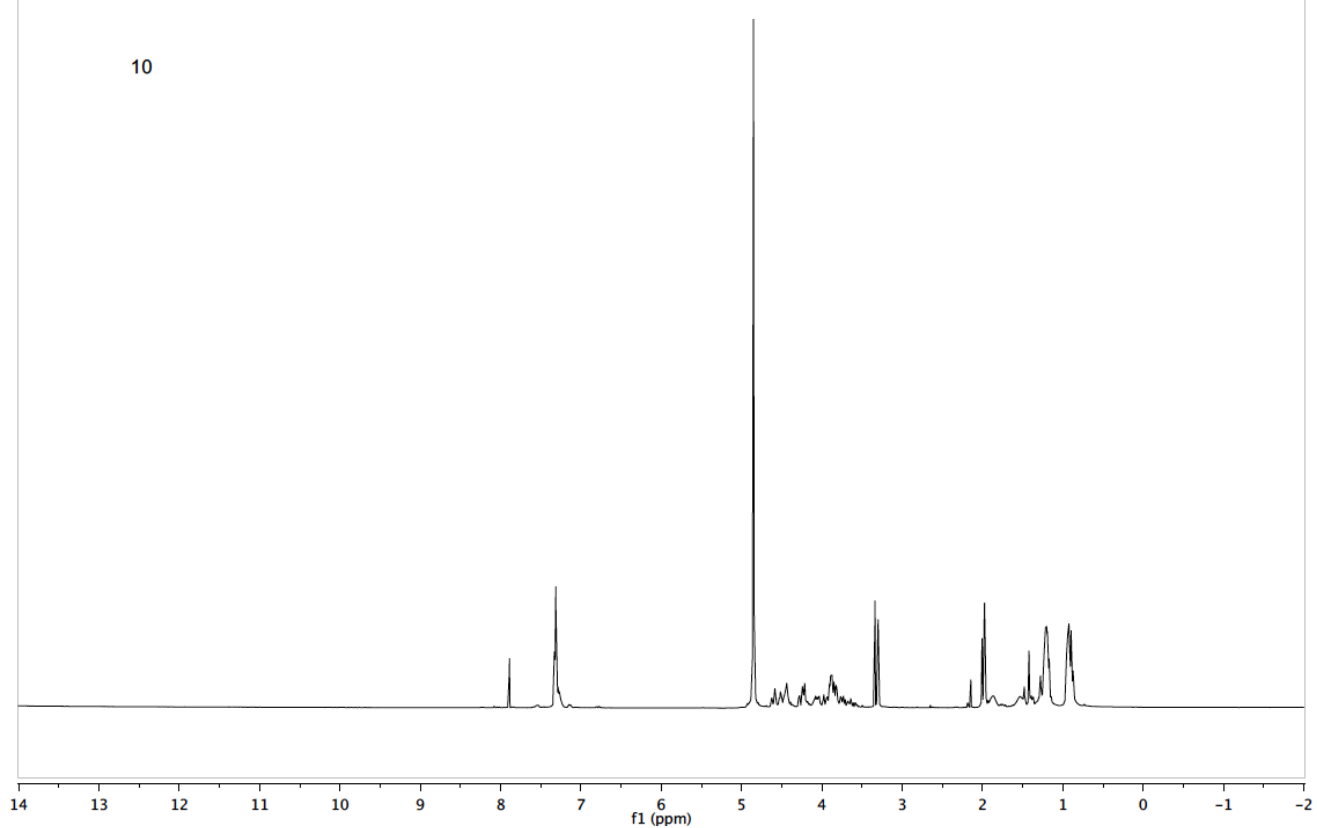
8



sgl343
Std Proton parameters

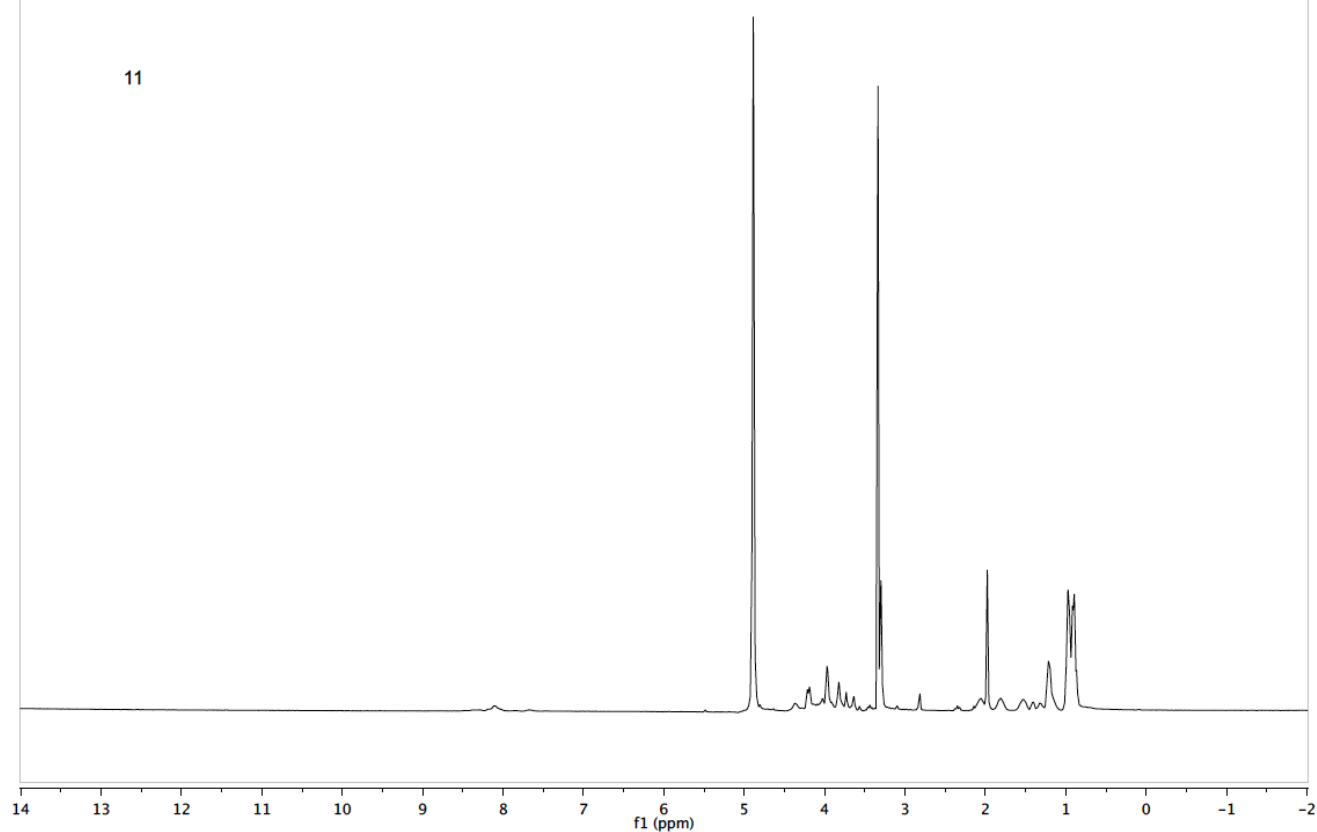


sgl465
Std Proton parameters



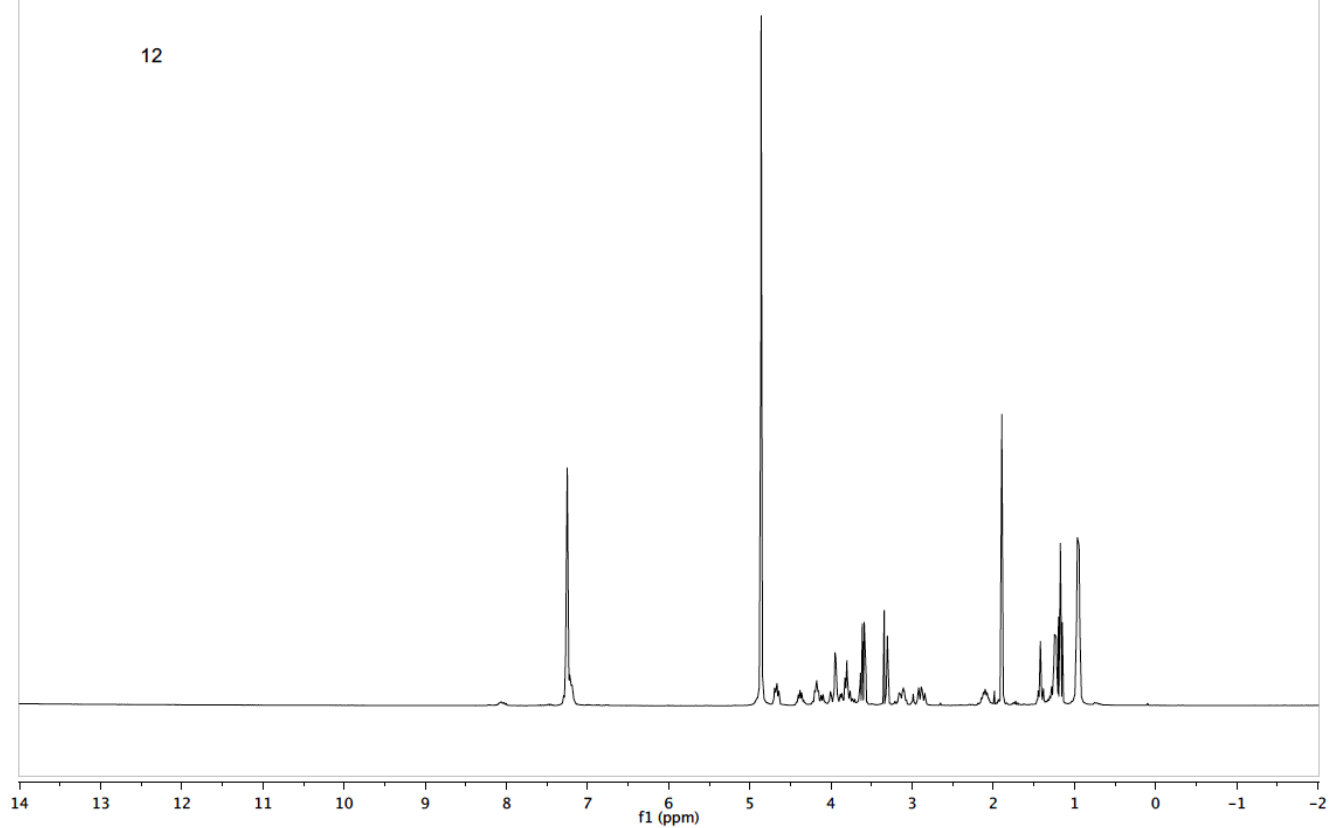
sgi310.2
Std Proton parameters

11



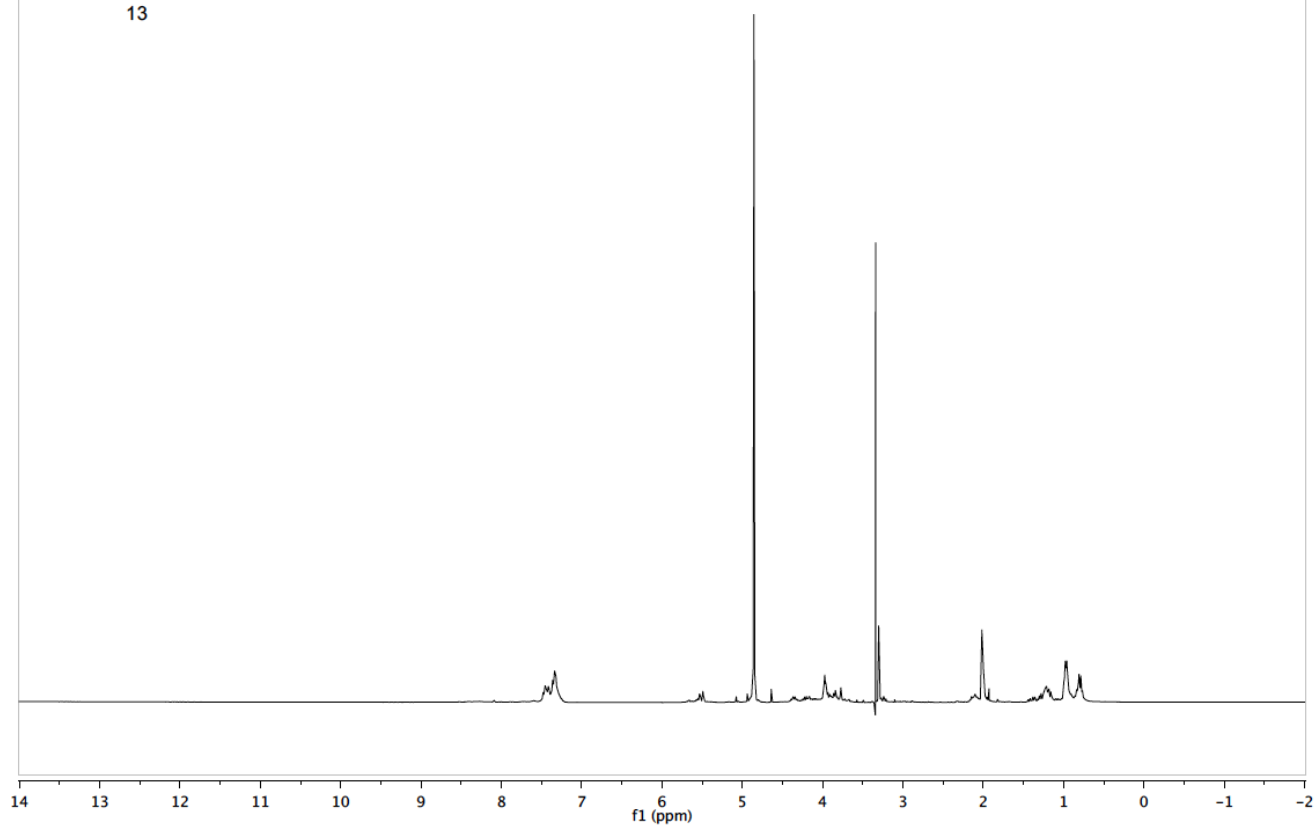
sgi463
Std Proton parameters

12



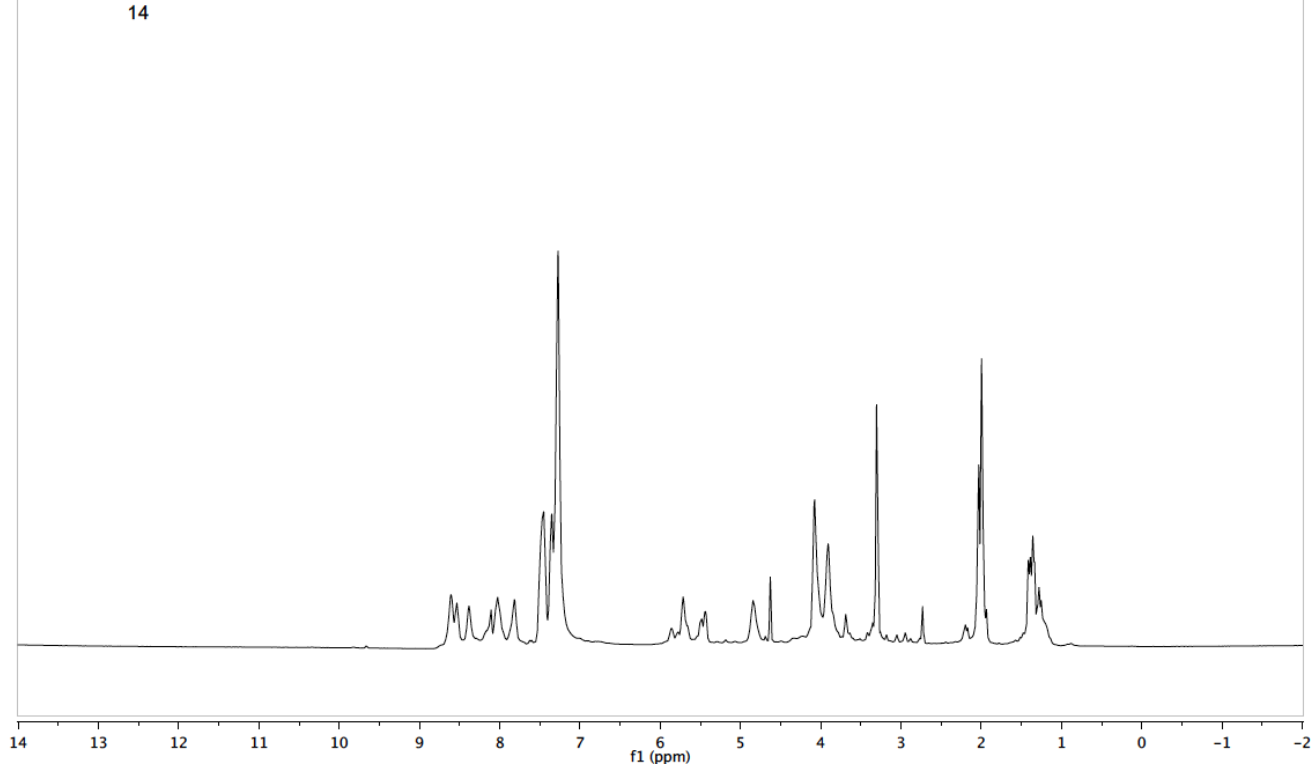
sgl368
Std Proton parameters

13



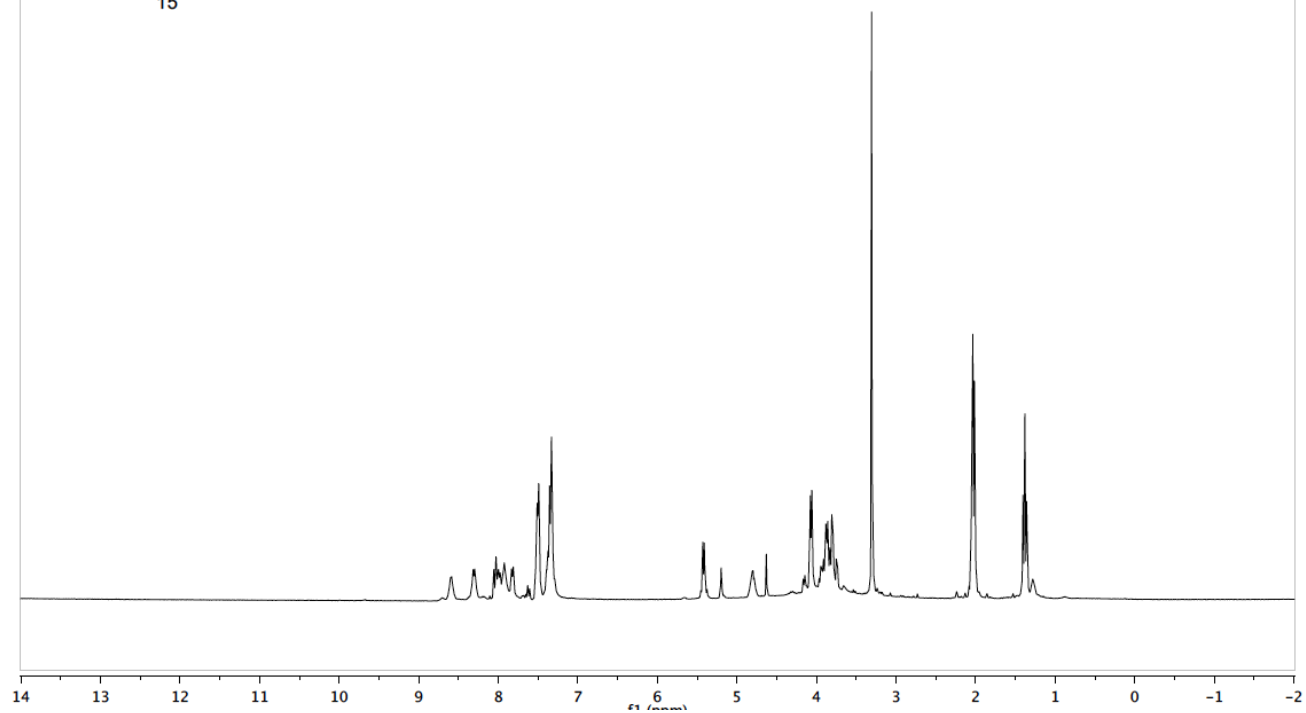
sgl431
Std Proton parameters

14



sgl429
Std Proton parameters

15



sgl430
Std Proton parameters

16

