

In-situ Interfacial Growth of Zeolitic Imidazolate Framework (ZIF-8) Nanoparticles Induced by Graphene Oxide Pickering Emulsion

S1 :

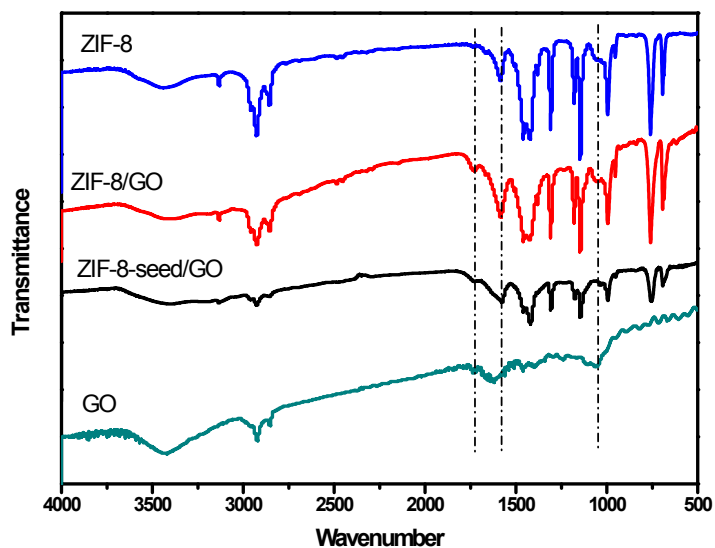


Figure S1. FTIR spectra of GO, ZIF-8, ZIF-8-Seed/GO, ZIF-8/GO composites, respectively.

S2:

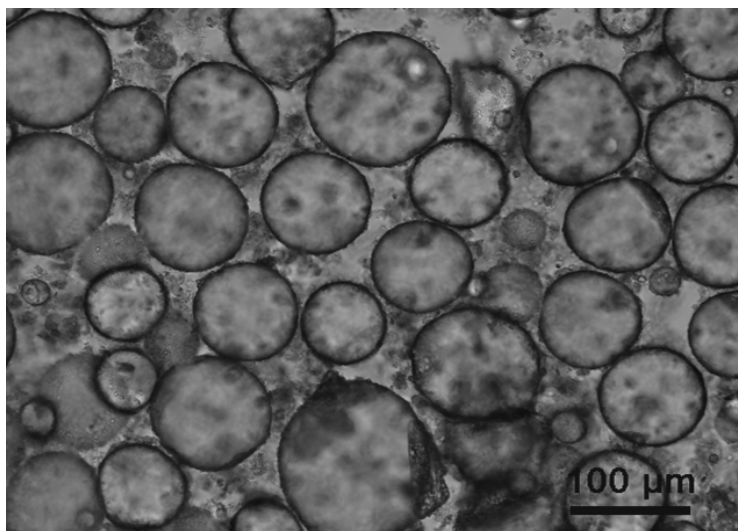


Figure S2. Optical micrographs of emulsions with concentrated MIM ligands and Zn^{2+}

S3:



Figure S3. Photographs of Pickering emulsion prepared freshly (left) and preserved for 2 months (right).

S4:

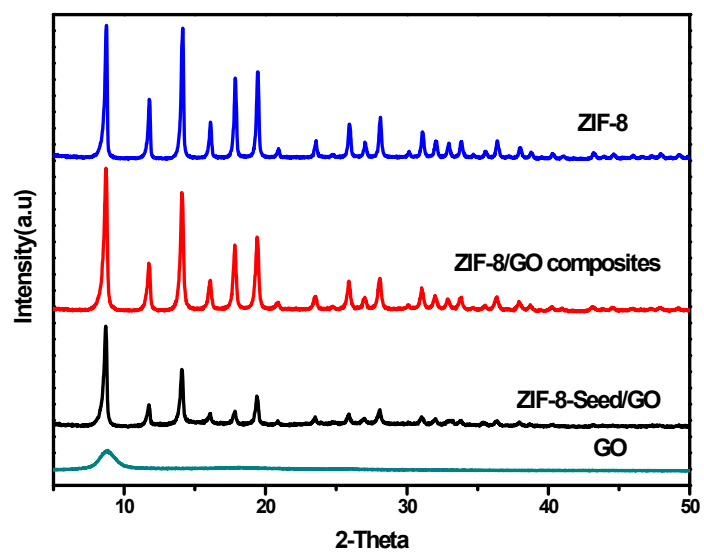


Figure S4. PXRD patterns of GO,ZIF-8, ZIF-8-Seed/GO, ZIF-8/GO composites, respectively.

S5:

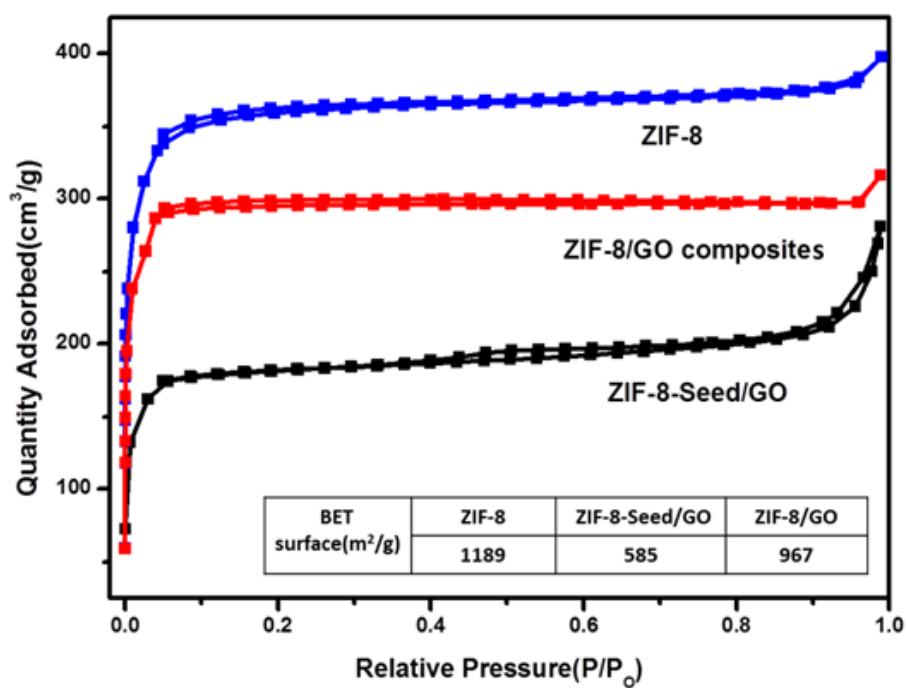


Figure S5. N₂ sorption isotherms of ZIF-8, ZIF-8-Seed/GO, ZIF-8/GO composites, respectively.

Table. Surface area of ZIF-8, ZIF-8-Seed/GO, ZIF-8/GO composites, respectively.

