

Supplementary Information

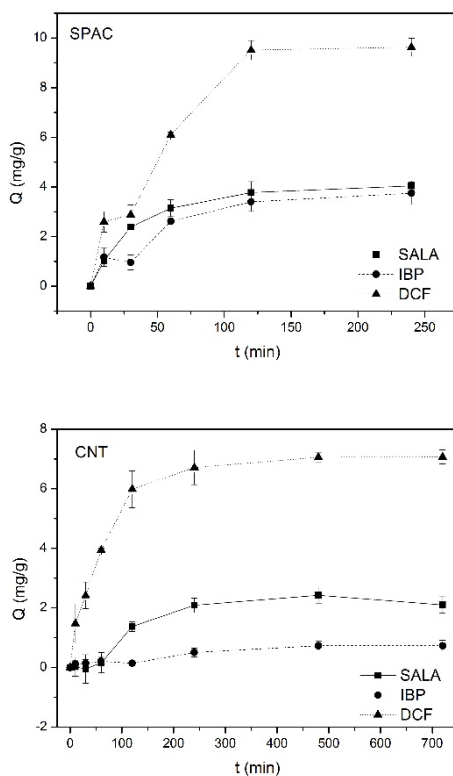


Fig. S1 Equilibrium time of ECs adsorbed onto SPAC and CNT with the dosage of 100mg/L.

Table. S1 Characteristics of source water, effluent water and synthetic water.

	pH	DOC (mg/L)	UV254 (1/cm)	SS (mg/L)
Source water	7.64	2.71	0.03	1.14
Effluent water	6.72	20.53	0.14	11.5
Synthetic water	7.41	2.13	0.02	1.04

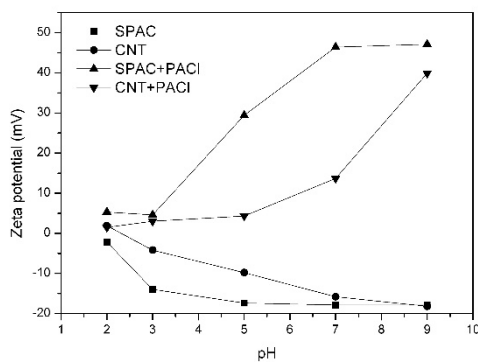


Fig. S2 Zeta potential of SPAC/CNT with or without PACl at different pH