

Supporting Information on

LiTaO₃ Microcubes: the Layered Structure and the Increased Curie Temperature

By Xin Xin Gong, Ming Fang, Guang Tao Fei, Mao Liu, Fa Di Li, Guo Liang Shang,
and Li De Zhang

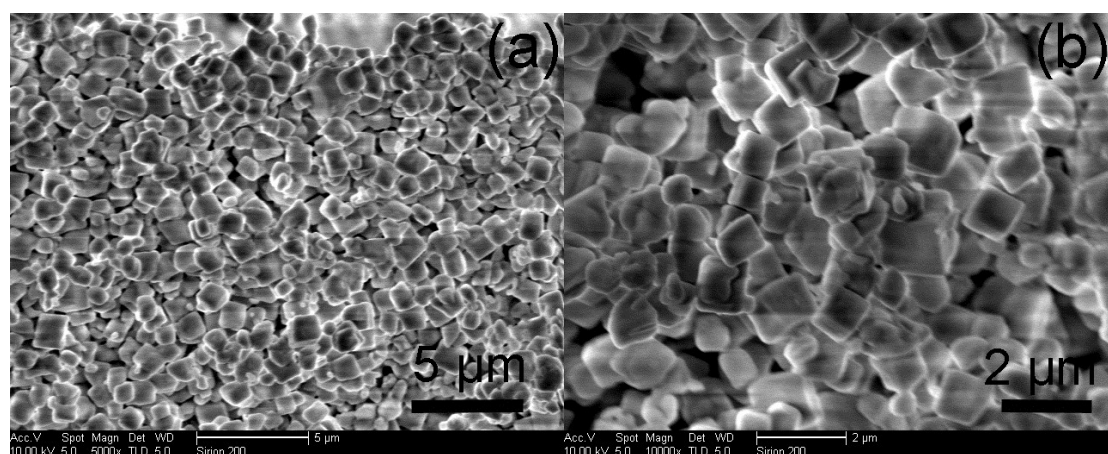


Figure SI-1. FESEM images of the sample after 1000 °C sintering.