

**“Electronic Supplementary Information”**

**“Green Synthesis of Au-Ag Bimetallic Nanocomposite using  
*Silybum marianum* Seed Extract and Their Application as Catalyst”**

R. Gopalakrishnan,<sup>a</sup> B. Loganathan<sup>b</sup> and K. Raghu\*<sup>a</sup>

<sup>a</sup> Department of Physics, Annamalai University, Annamalainagar 608 002, Tamilnadu, India

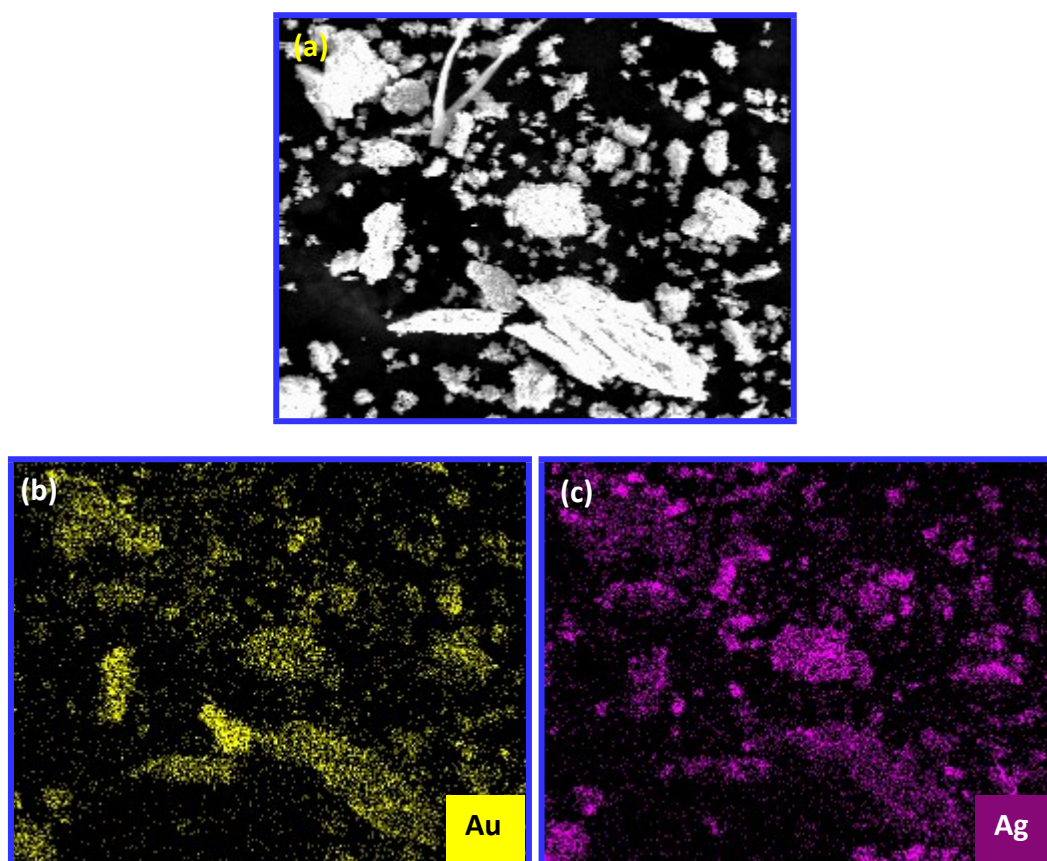
<sup>b</sup> Department of Chemistry, Annamalai University, Annamalainagar 608 002, Tamilnadu, India

<b>ELECTRONIC SUPPLEMENTARY INFORMATION (ESI)</b>	<b>TABLE OF CONTENTS</b>
<b>Figure ESI-1</b>	<b>Figure 1 (a)</b> Field emission scanning electron microscopic (FE-SEM)/EDX, elemental color maps of <b>(b)</b> Au and <b>(c)</b> Ag.
<b>Figure ESI-2</b>	<b>Figure 2 (a and b)</b> Anodic current ( $i_{pa}$ ) of the cyclic voltammograms (CV) up to 0.6 V/s obtained with Au-Ag/GCE <i>versus</i> the scan rate and anodic peak height <i>versus</i> the square root of the scan rate.

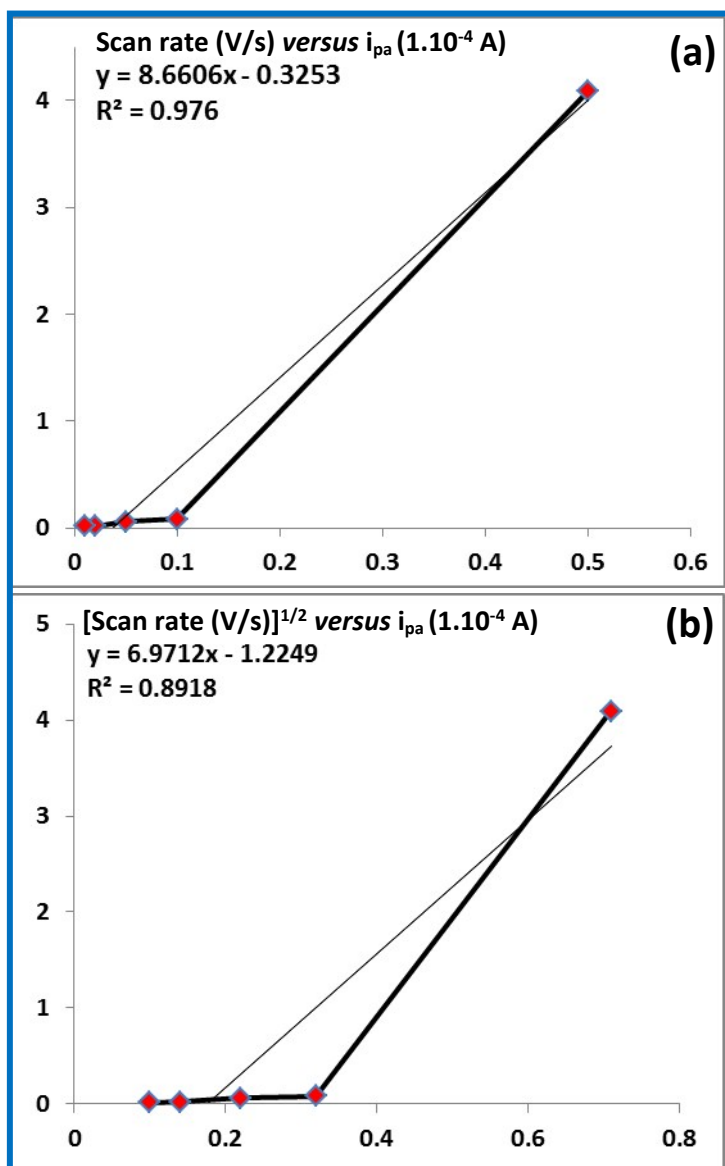
\* Author to whom correspondence should be addressed.

(Dr. K. Raghu)

E-mail: [raghuk.phy@gmail.com](mailto:raghuk.phy@gmail.com)



**Figure ESI. 1** (a) Field emission scanning electron microscopic (FE-SEM)/EDX, elemental color maps of (b) Au and (c) Ag



**Figure ESI. 2(a and b)** Anodic current ( $i_{pa}$ ) of the cyclic voltammograms (CV) up to 0.6 V/s obtained with Au-Ag/GCE *versus* the scan rate and anodic peak height *versus* the square root of the scan rate