

Electronic Supporting Information

## **Anchoring Nano-Sulfur on Flat Graphene as Cathode Material for Lithium-Sulfur Battery**

Bin Li, Songmei Li\*, Jianhua Liu, Jingjing Xu

*Key Laboratory of Aerospace advanced materials and performance of ministry of  
Education, School of Materials Science & Engineering, Beihang University, 100191,  
Beijing, China.*

*E-mail: Songmei\_li@buaa.edu.cn*

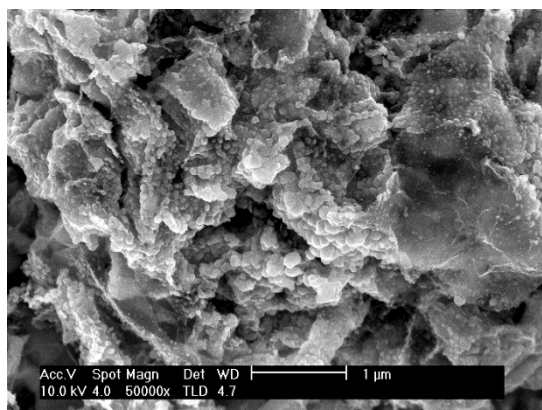


Fig.S1 SEM image of S/G prepared without CTAB. There are many sulfur particles composited with graphene.

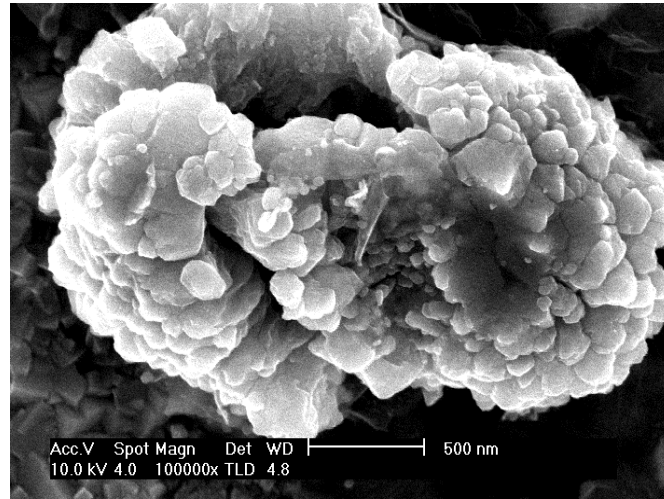


Fig.S2 typical SEM image of S-GO.

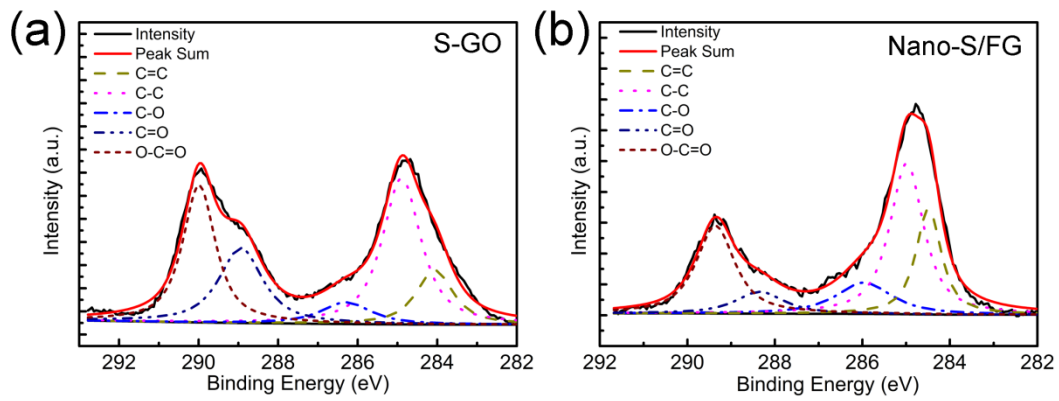


Fig.S3 C1s high resolution spectrum of S-GO and Nano-S/FG..

Table S1. Fitting results of AC impedance spectra.

Sample	$R_1/\Omega$	$R_2/\Omega$
Nano-S/FG	8.9	76.7
S/G	12.6	269.1